 <b>Monitoring report form for CDM project activity</b> <b>(Version 07.0)</b>		
<b>MONITORING REPORT</b>		
<b>Title of the project activity</b>	Introduction of the recovery and combustion of methane in the existing sludge treatment system of the Cañaveralito Wastewater Treatment Plant of EMCALI, in Cali, Colombia	
<b>UNFCCC reference number of the project activity</b>	2341	
<b>Version number of the PDD applicable to this monitoring report</b>	07	
<b>Version number of this monitoring report</b>	01	
<b>Completion date of this monitoring report</b>	11/05/2020	
<b>Monitoring period number</b>	Third Monitoring Period	
<b>Duration of this monitoring period</b>	01/01/2015 – 31/12/2019	
<b>Monitoring report number for this monitoring period</b>	Number 1	
<b>Project participants</b>	EMCALI Empresas Municipales de Cali EICE E.S.P ALLCOT AG	
<b>Host Party</b>	Colombia	
<b>Applied methodologies and standardized baselines</b>	Methane recovery in wastewater treatment (AMS III.H, Version 09, Scope 13, march 28, 2008)	
<b>Sectoral scopes</b>	Scope: 13 Handling and waste disposal	
<b>Amount of GHG emission reductions or net anthropogenic GHG removals achieved by the project activity in this monitoring period</b>	<b>Amount achieved before 1 January 2013</b>	<b>Amount achieved from 1 January 2013</b>
	-	173,078 tCO <sub>2</sub> e <sup>1</sup>
<b>Amount of GHG emission reductions or</b>	248,361 tCO <sub>2</sub> e <sup>2</sup>	

<sup>1</sup> Actual GHG emissions reductions achieved from January 1, 2015 up to December 31, 2019

<sup>2</sup> Estimated amount of GHG emission reductions for the current monitoring period (1,825 days) based on average annual estimation of CER's as per the registered PDD

net anthropogenic GHG removals estimated ex ante for this monitoring period in the PDD	
--	--

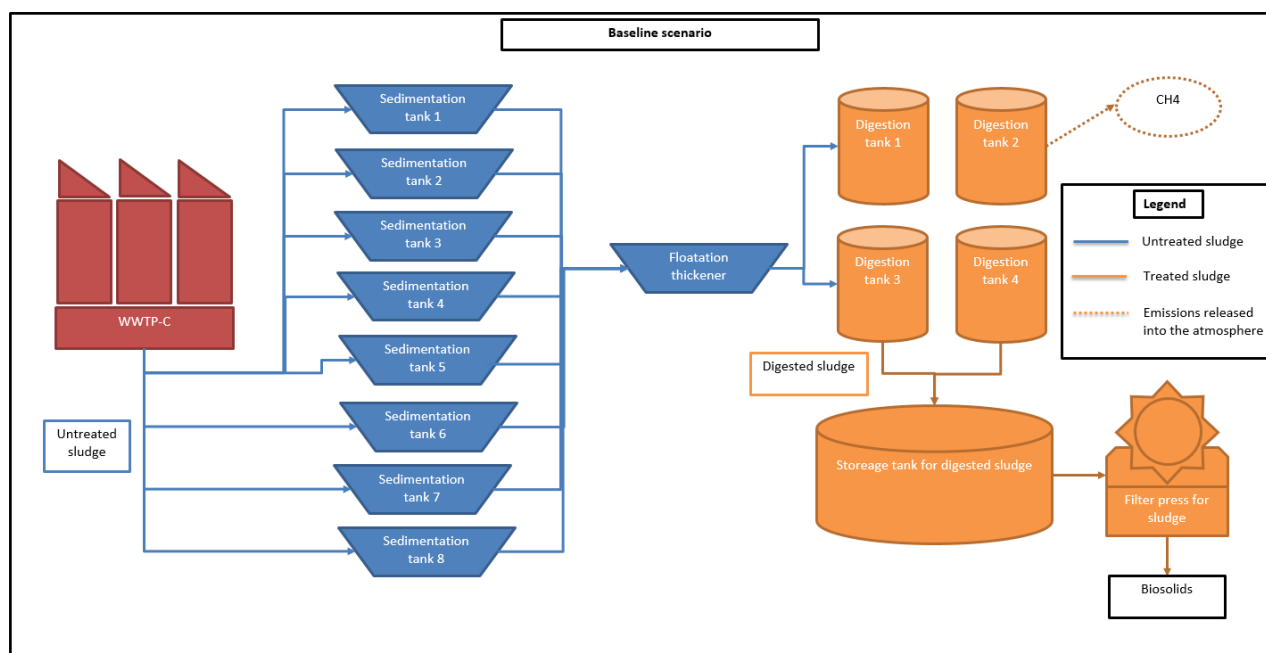
## SECTION A. Description of project activity

### A.1. General description of project activity

The project activity qualifies as Type III: Other project activities not included in Type I or Type II that result in GHG emission reductions not exceeding 60 KtCO<sub>2</sub>e per year in any year of the crediting period.

During the primary treatment of the wastewater of Cali, carried out in the WWTP-C, sludge composed of the organic matter susceptible to the decomposition is generated. The sludge is produced in eight sedimentation tanks and next carried into thickener tank. Later on sludge is redirected to four covered anaerobic digestion tanks (digesters) with the purpose of obtaining more stable end-product and eliminating pathogenic microorganisms present in the untreated sludge (see Figure 1). The above mentioned anaerobic digestion, besides stabilizing sludge, generates biogas with high content of methane (between 57% and 64% according to the latest analyses undergone in WWTP-C ).

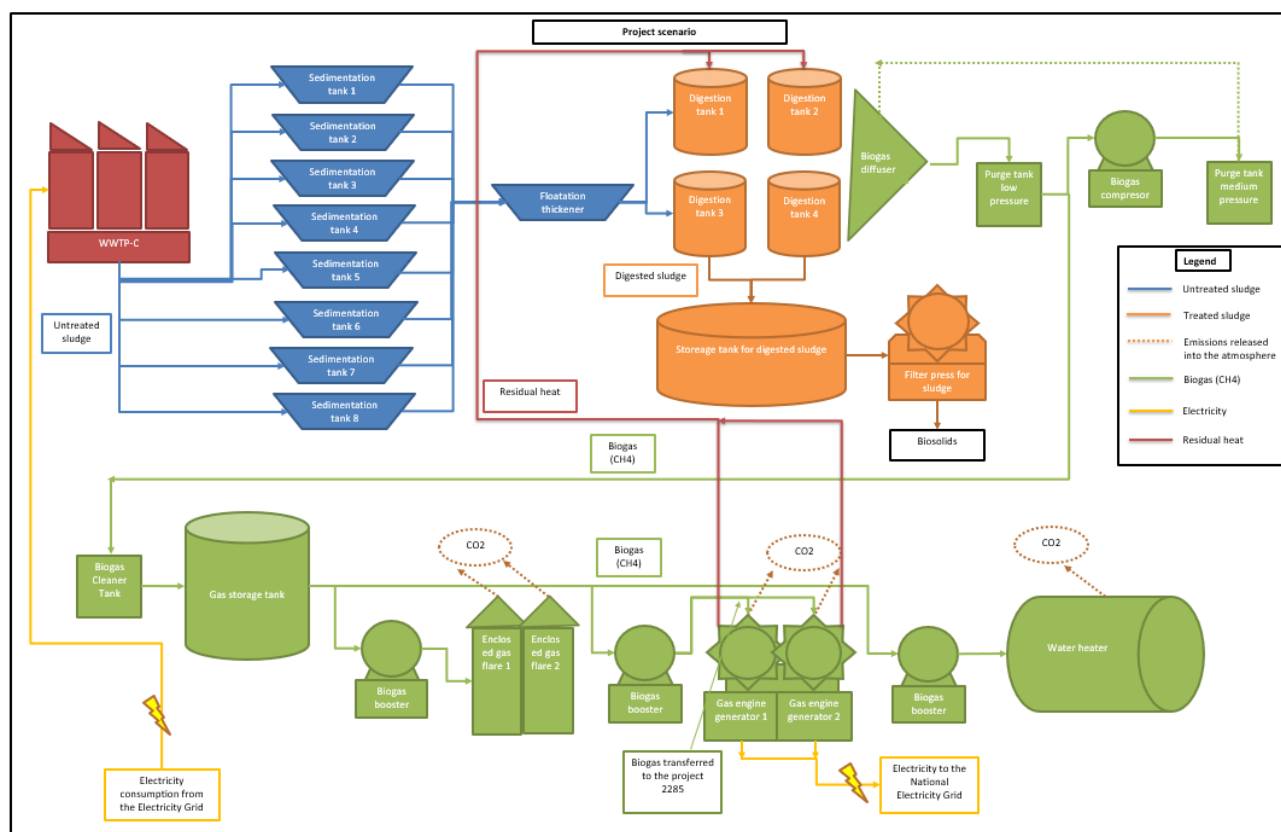
**Figure 1: Sludge treatment line –WWTP-C - Baseline Scenario**



The baseline scenario is the existing sludge treatment system without methane recovery and combustion.

This project category comprises measures that recover methane from biogenic organic matter in wastewaters by means of Introduction of methane recovery and combustion to an existing sludge treatment system, See figure 2.

Figure 2: Sludge treatment line -WWTP-C Project Scenario

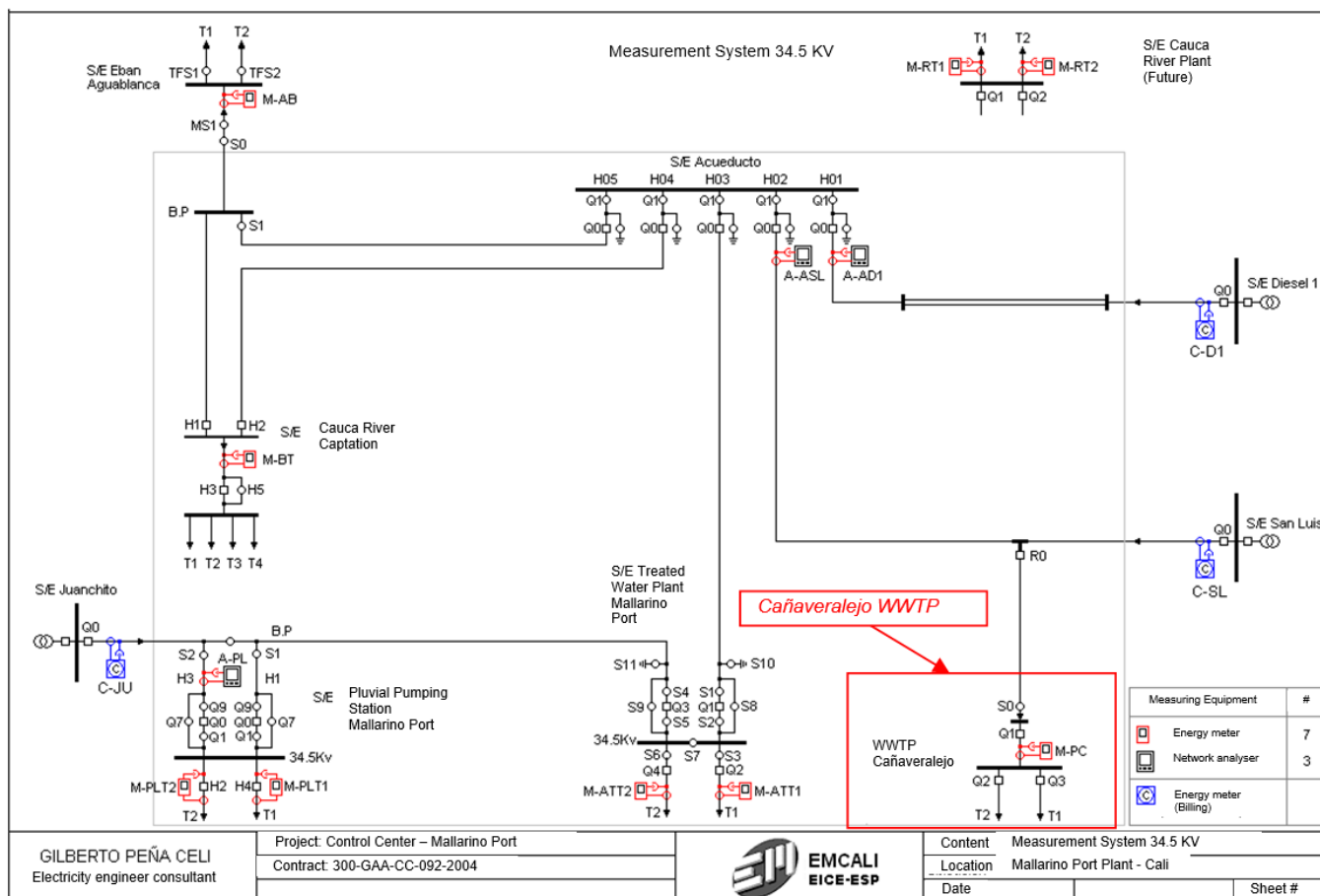


The activity of the proposed Clean Development Mechanism (CDM) small-scale project (further called proposed project) involves the capture and high efficiency combustion of methane, present in biogas generated during the process of treatment of sludge in the Wastewater Treatment Plant – WWTP Cañaveralejo (further called WWTP-C) – located in Cali, Colombia. Methane is burned in the high efficiency internal combustion engine of the electricity generation system. If the engine Generator is unavailable, the methane will be burned in the water heater. Finally, the high efficiency flare is used as the last alternative.

The project is located near to other CDM project activity: *Displacement of the electricity of the national electric grid by the auto-generation of renewable energy in the Cañaveralejo Wastewater Treatment Plant of EMCALI in Cali, Colombia* (Id. 2285). This project activity consists of the displacement of the national grid electricity by the electricity auto-generated by the Wastewater Treatment Plant – WWTP Cañaveralejo (further called WWTP-C). Biogas is produced during the anaerobic digestion of the sludge obtained through the wastewater treatment processes and farther used as fuel in two sets of engine-generators with purpose to generate the electricity for the internal use of the WWTP-C. Both project activities are related since the output of the project 2341 is used for the electricity generation in the project 2285, nevertheless, both projects are separated, independent and monitored and verified in a separated way.

Electrical information about the electricity flow, interconnection and measurement points is included in the single line diagram bellow where it is demonstrated that the monitoring of the project 2341 cannot be interfered by the monitoring of the project 2285 since the biogas is transferred from the 2341 to the 2285.

Figure 3: Single Line Diagram. Energy flow.



The owner and operator of the proposed project activity is EMPRESAS MUNICIPALES DE CALI EMCALI EICE ESP. The EMCALI mission is to contribute to the well-being and the development of the Cali community through the provision of essentials and complementary public services, committed with the environment and guaranteeing social and economic profitability. Among the services provided by EMCALI are telecommunications, water, electricity and sewer services.

The plant was designed by NITOGOI and constructed by Degremont-Mitsubishi-Conciviles-Norbert Odebrecht, consortium contracted by EMCALI. The WWTP-C is designed to operate with an average flow of 7.6 m<sup>3</sup>/s from wastewaters generated by the city of Cali. The construction of WWTP-Cañaveralero was started on August 10, 1997, and on December 26, 2002, EMCALI received the plant in operation.

The project activity WWTP-Cañaveralero contributes to the principle "Contribution to the long-term improvement of the social and economic wellbeing of local communities and society in general" due to its commitment to invest in programs of protection of the environment.

The Project was registered on September 15, 2009 with a 10-year fixed crediting period. Emcali requested post-registration changes to the start date of crediting period to UNFCCC, which was approved by the Executive Board of UNFCCC, and accordingly, the start date of crediting period was set forth as of September 14, 2010 until September 13, 2020.

The total emission reductions achieved in the monitored period between 01/01/2015 and 31/12/2019 were 173,078 ton CO<sub>2</sub>e.

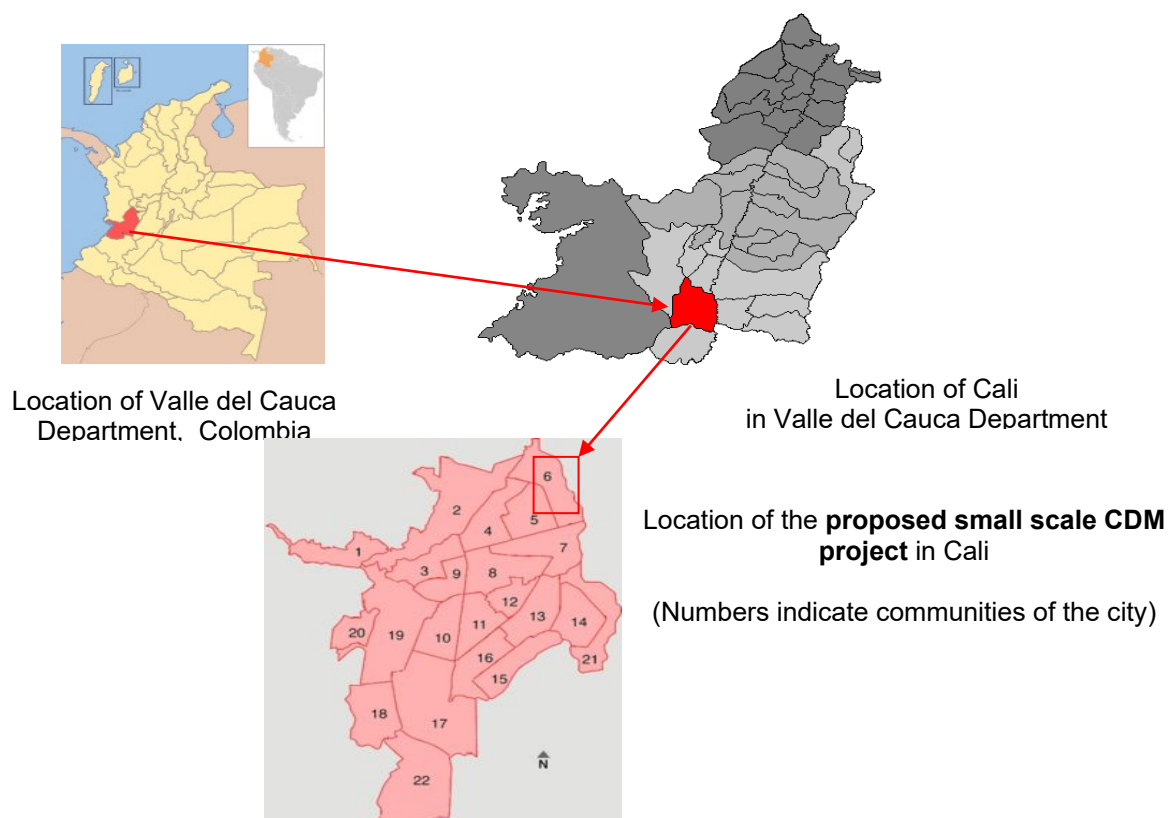
## A.2. Location of project activity

The project activity is located in the Wastewater Treatment Plant, Cañaveralejo, (WWTP-C), located in the northeast of Cali in the Department of Valle del Cauca, Republic of Colombia. The Plant has a total area of 22 hectares, at the following geographical coordinates:

3 ° 28 '10.06538 "North, 76 ° 28' 44.03571" West

The WWTP is located 995 meters above sea level. Locally, the WWTP- Cañaveralejo is located in the commune 6 in the Petecuy I neighbourhood of Cali.

**Figure 4. Geographical location of the proposed project**



**Picture 1: Wastewater Treatment Plant (WWTP) – Cañaveralajo, Cali, Colombia****A.3. Parties and project participants**

Parties involved	Project participants	Indicate if the Party involved wishes to be considered as project participant (Yes/No)
Colombia	Empresas Municipales de Cali EMCALI EICE ESP (public entity)	Yes
Switzerland	ALLCOT AG	Yes

**A.4. Reference to applied methodologies and standardized baselines**

Methodology AMS.III.H version 09 - Methane recovery in wastewater treatment

AMS.I.D version 13.0 - Grid connected renewable electricity generation

Tools referenced in this methodology:

- Tool to calculate project or leakage CO<sub>2</sub> emissions from fossil fuel combustion
- Emissions from solid waste disposal sites
- Tool to calculate baseline, project and/or leakage emissions from electricity consumption

**A.5. Crediting period type and duration**

Type: Fixed

Start date of crediting period: It relates to the registration date of the CDM project: 15/09/2009

The project participant requested post-registration changes to the start date to UNFCCC, which was accepted by the Executive Board of UNFCCC, and accordingly, the starting date of crediting period was set as of September 14, 2010.

Choice of Crediting Period : Fixed crediting period for 10 years

Crediting Period : 14/09/2010 - 13/09/2020

Third Monitoring period : 01/01/2015 - 31/12/2019

**SECTION B. Implementation of project activity****B.1. Description of implemented project activity**

Recovery and combustion of methane in the project has been implemented as established in the approved Project Design Document (PDD)

All the physical characteristics of the proposed CDM project activity, including the systems of data collection and storage has been carried out in accordance with the registered Project Design Document (PDD).

The project activity involves methane capture and combustion, present in the biogas generated during the sludge treatment process of the Wastewater Treatment Plant of Cañaveralejo.

The technology used for the proposed project is based on the collection of biogas, storage, purification and methane combustion in the electric power generation system.

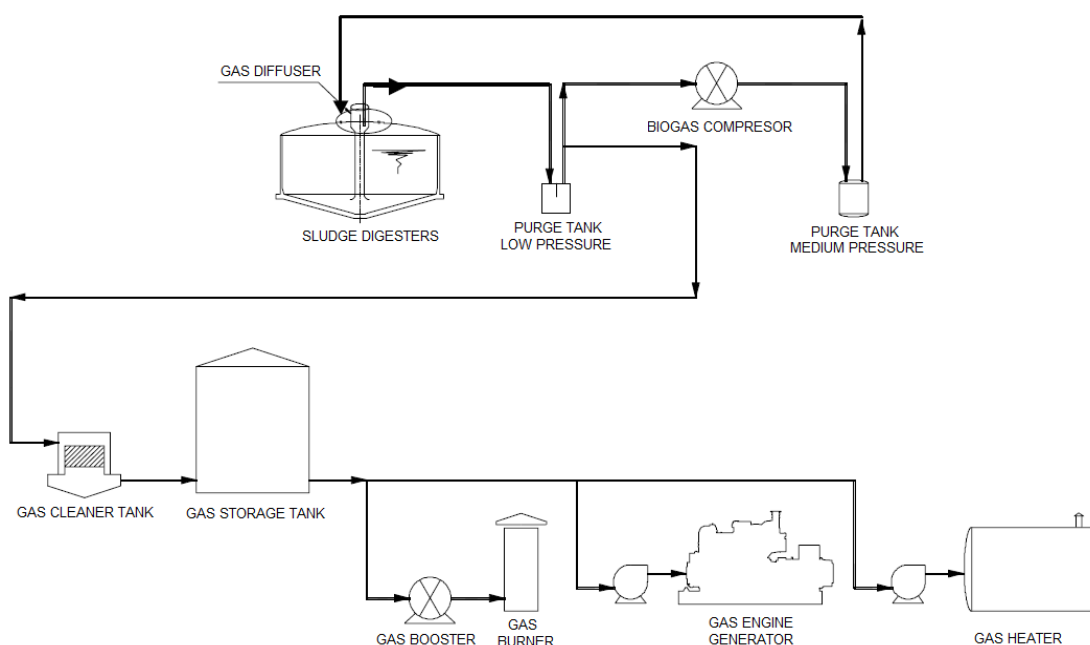
This project category consists of the capture of biogas produced by organic matter present in generated sludge.

The proposed project activity conforms to the measures that recover methane from biogenic organic matter in wastewaters by means of the "Introduction of methane recovery and combustion to an existing sludge treatment system" according to the option (iii) of the approved methodology Methane Recovery in Wastewater Treatment (AMS III.H, Version 09, Scope 13, Mar 28, 2008).

The recovered methane from the above measure will be utilized for the direct electrical energy generation, conform to the application (a) of the approved methodology Methane Recovery in Wastewater Treatment (AMS III.H, Version 09, Scope 13, Mar 28, 2008).



Figure 5. Methane capture and utilization process



In alternative condition biogas will be combusted in flares and/or water heater. In order to ensure the project adequate implementation and its subsequent operation a multi-facet approach for the sound and safe technology and know-how transfer was introduced. This approach involved careful identification and qualification of appropriate technology/services providers (worldwide acknowledged companies such as Mitsubishi Corporation, Degremont S.A., Waukesha, Leroy Somer and Kayanson), adequate selection of the technology solution, supervision of the complete project installation, the WWTP-C staff training and the development and implementation of a complete Monitoring Plan. As part of this process a technology solution that would be self-sustaining (i.e., highly reliable, low maintenance, and operate with little or no user intervention) had been implemented. Furthermore, the project executor ensures sound and safe application, operation and maintenance of all the equipment implemented in the WWTP-C for the purposes of the CDM project activity and will carefully monitor the data collection, recording processes and environmental and health safety (e.g. the equipment is fit with flame traps, H<sub>2</sub>S detectors, methane detectors, depressurization valves, flame controls, thermal protection of all the associated engines, fire hazard protection system, etc). Moreover, it will ensure that the staff acquires appropriate expertise and resources to operate the system on an ongoing/continuous basis.

To describe the technology to be implemented within the proposed project activity, the existing technology in the WWTP-C (existing without the project activity) is being explained below.

During the primary treatment of the wastewater of Cali, carried out in the WWTP-C, sludge composed of the organic matter susceptible to the decomposition is generated. The sludge is produced in eight sedimentation tanks and next carried into thickener tank. Later on sludge is redirected to four covered anaerobic digestion tanks (digesters) with the purpose of obtaining more stable end-product and eliminating pathogenic microorganisms present in the untreated sludge (see Figure 1). The above mentioned anaerobic digestion, besides stabilizing sludge, generates biogas with high content of methane (between 57% and 64% according to the latest analyses undergone in WWTP-C ).

Description of the technology implemented within the CDM project activity:

The equipment of the technology implemented within the activity of the CDM project for the methane capture and combustion are:

- gas storage tanks
- gas dehumidificator
- gas engine of the electric generator
- biogas flares
- water heater.

The gas captured is being stored in two cylindrical metallic tanks and next conveyed to a gas dehumidificators, later to be burnt in the generators internal combustion engines or, in alternative conditions, in flares and/or water heater. Each generator is a three phase synchronic type devise, which possesses four strokes engines of internal high efficiency combustion and the ability to convey 1,054 kW at 1,200 rpm.

In order to optimize the processes in the Plant, the water from the cooling of the generator's engines is used for the maintenance of the temperature of sludge in the digesters (between 33 to 35°C). This enables to control the optimum thermal conditions for the anaerobic digestion. In case the generation system fails some of the biogas will be redirected and burnt in the water heater which in such case is foreseen to maintain the temperature of sludge in the digesters.

Basic technical specifications of the biogas flare, water heater, dehumidificator, biogas storage tanks and generator's engine (more information available upon a request):

Gas storage tanks

Quantity:	2
Volume:	1,000 m <sup>3</sup>
Diameter:	12.451 m
Height:	13 m
Lifetime:	5 years (conform to the estimations of the operating staff of the WWTP-C)

Gas dehumidificator

Quantity:	1
Inlet temperature:	30°C
Relative Humidity:	100%
Flow:	1,000 Nm <sup>3</sup>
Pressure abs:	1,033 mbars
Lifetime:	5-7 (conform to the information obtained from the official representative of Degremont in Colombia who installed the equipment in the WWTP-C).

Gas engine generator

Type:	Engine with the gas pre-chamber, 4 strokes, 4 valves
Quantity:	2
Operation:	Automatic with output power and manual switch
Cylinder no.:	V-12
Speed:	1,200 rpm aprox.
Fuel consumption:	2,651 Mcal/hr of biogas
Lifetime:	20 years and more (conform to the information obtained from the official representative of Waukesha Engine Dresser in Colombia (PEGSA Ltda)

Enclosed Gas flare

Quantity:	2
Power:	2.2 kW (gas booster) 1.1 kW (ventilator)
Operation:	Automatic with the level of biogas in the storage gas tank
Flow:	550m <sup>3</sup> /h
Lifetime:	20 years and more (conform to the information of the lifetime of the enclosed flares with similar technical specifications

Water heater:

Type:	3 lines
Quantity:	1
Capacity:	1,200 Mcal/h
Power:	2.5 kW (gas booster) 7.5 kW (ventilator)
Lifetime:	25 years (conform to the information obtained from the producer – Kayanson Engineers).

It is important to emphasize that although the lifetimes of the dehumidicator and biogas storage tanks are foreseen to be shorter than the duration of the CDM project activity, in case it is necessary to replace them within this period, the project proponents will ensure their replacement with the equipment of equal or similar technical and operational specifications. This way it will be ensured that the amount of the emission reductions achieved by the CDM project during the crediting period will not reduce due to the replacement of the existing equipment of the mentioned above project activity.

On the other hand, all the equipment of the project is included within the program of preventive and corrective maintenance which will keep ensuring its proper functioning. Furthermore, at the moment of its reparation or replacement, the time of the installation of the substitute equipment will be reduced to minimum to avoid eventual interference in the continuity of the project activity and the biogas will be combusted in different alternative ways in the flares and/or water heater. Under the alternative operation conditions, when the biogas might be combusted in the flares or in the water heater, the only electricity consumption might occur during the operation of the flares and such will be monitored and subtracted from the total emission reductions achieved by the project activity. There are no diesel generators on site to feed the methane capture neither any other combustion plant (besides the biogas combustion engines of the electric generators).

Main events occurred during the monitoring period are described:

1. Flow rates projected in the PDD's by WWTP-Cañaveralaje Emcali were not actually achieved in the implementation of projects.
2. TSS (total suspended solids) concentration described and projected in the PDD's by Emcali were superior to data obtained due to the rainy season presented during the year 2012 in the Department of Valle del Cauca in Colombia.
3. Fraction of VSS (Volatile Suspended Solids) / TSS (Total Suspended Solids) was lower than projected in the PDD's of Emcali due to the drag of inorganic material presented in the sewage of the city of Cali, Valle del Cauca, Colombia VSS ( Volatile Suspended Solids) destruction in the digesters in the WWTP-C was 45% on average, this data was lower than projected in the PDD (50%).
4. The PP lost information from the CDM database due to failures in the SCADA for the periods 18/Nov/2015 to 11/Dec /2015, 07/Feb/2016 to 07/Apr/2016, 27/Sep/2017 to 24/Oct/2017 and 14/Jul /2018 to 17/Aug/2018.
5. The PP had biogas leaks through the covers of Digesters or Biogas Storage Tanks in the periods: 12/May/2015 to 08/Sep/2015, 04/Mar/2017 to 07/Sep/2017 and 22/Aug/2018 to 31/Dec/2018.
6. The PP had failures in the generators engines in the periods: 17/Feb/2015 to 1/Apr/2015, 17/Aug/2015 to 21/Dec/2015, 25/Apr/2016 to 15/Oct/2016 and 21/Dec/2016 to 26/Dec/2016.
7. When there is no power generation, the burning of biogas in the heater is started but this equipment only consumes up to a maximum of 250 m<sup>3</sup>/h.

## **B.2. Post-registration changes**

### **B.2.1. Temporary deviations from the registered monitoring plan, applied methodologies, standardized baselines or other methodological regulatory documents**

There are not requested temporary deviation from the registered monitoring plan.

### **B.2.2. Corrections**

Corrections that are being submitted with this monitoring report and new version of the PDD (version 07) as part of the request for issuance (post-registration change – issuance track) as applicable from this monitoring period (as per paragraph 232 of the CDM Project standard for project activities) are:

1. New figures (2 and 3) have been included to clarify the technology and boundaries of the project activity.
2. The following sentence: *“basic technical specifications of the biogas flare, water heater, dehumidicator, biogas storage tanks and generator’s engine (more information available upon a request)”* has been deleted since it was repeated in Section A.3.
3. Information regarding project participants has been updated in this new version of the PDD to be consistent with the UNFCCC website (inclusion of ALLCOT AG).
4. Section A.7 has been modified to include the use of the Methodological tool: Assessment of debundling for small-scale project activities Version 04.0 instead the Appendix C of the Simplified Modalities and Procedures for Small-Scale CDM Project Activities.
5. Section A.8 has been reinforced including the three applicability conditions of the applied methodology to be consistent with the rest of the document.
6. Project boundaries and sources and gases included and excluded in the calculations have been clarified (Section B.3).

7. Figure 4 has been included to clarify the boundary of the project activity amongst the inclusion of the Biogas alternative use and Energy Consumption of the Grid.
8. Ex post baseline calculations have been clarified in section B.6.1 to be in accordance with paragraph 36 of the applied methodology.
9. The calculation of Project activity emissions from electricity consumption are clarified (in section B.6.1) to be determined as per the procedures described in the latest version of the AMS I.D (Grid connected renewable electricity generation) at the moment of the registration of the project activity (version 13) since the reference to the "Tool to calculate the emission factor of the grid" was not correctly included.
10. A clarification regarding the consideration of Project Emissions has been included in the PDD. Since no new sludge treatment is performed in the project respect to the baseline scenario, the amount of untreated sludge generated ( $S_{y,untreated}$ ) is the same than in the baseline scenario, therefore, the potential to generate methane are equal in the baseline and the proposed project activity. Therefore,  $MEP_{y,s,treatment}$  is considered zero in the ex post calculations. It was included in the PDD only for the ex-ante calculations. This consideration was approved by the Validating DOE during the registration of the project, as it is detailed in the Validation report with reference NO. 2008-BQ-ME-15, and therefore, this is considered only a correction in the reporting.
11. Three monitoring parameters have been detailed in the monitoring plan of the revised PDD to be in accordance with the applied methodology. These parameters were monitored in accordance with the methodology, but, they were not correctly reported in the registered PDD.
  - Flare efficiency (%).
  - Grid electricity consumption in year "y" (MWh).
  - Grid emission factor (tCO<sub>2</sub>/MWh).

The operating time of the flares and the water heater are calculated using the values of the temperature, and it is clarified in the respective monitoring parameters ( $T_{flare1}$ ,  $T_{flare2}$ ). The operation hours of the water heaters are also calculated using the values of Volumetric flow rate of biogas and volumetric fraction of methane fed into the water heater. And a clarification is also included in the monitoring parameter. It is considered as correction since all of them were considered in the calculations stated in the PDD, but, the tables were not correctly included in the registered version. The process of improve the report of them does not affect the baseline, additionality or design of the project, in accordance with appendix of the CDM Project Standard.

The PRC-2341-001 (approved on 01/07/2015) included the following changes:

- Parameters removed of the monitoring plan:
  - $T_{H,h}$ : Temperature of biogas fed into the water heater (°C)
  - $T_{G,h}$ : Temperature of biogas fed into the engines of the electric . generators (°C).
  - $T_{G,h}$ : Temperature of biogas flared (°C)
  - $P_{G,h}$ : Pressure of biogas fed into the engines of the electric generators (mbar)
  - $P_{H,h}$ : Pressure of biogas fed into the water heater (mbar)
  - $P_{G,h}$ : Pressure of biogas flared (mbar)
- Due to the volumetric flow meters deliver results in normal conditions, and these were used for this correction.  
The management and monitoring structure and responsibilities of staff related to CDM project activity has been modified taking into account new changes in the organizational structure of the entity.

**B.2.3. Changes to the start date of the crediting period**

No change to the start date of the crediting period is requested.

**B.2.4. Inclusion of monitoring plan**

Not applicable.

**B.2.5. Permanent changes to the registered monitoring plan, or permanent deviation of monitoring from the applied methodologies, standardized baselines, or other methodological regulatory documents**

There are no permanent changes to the registered monitoring plan requested in this monitoring period.

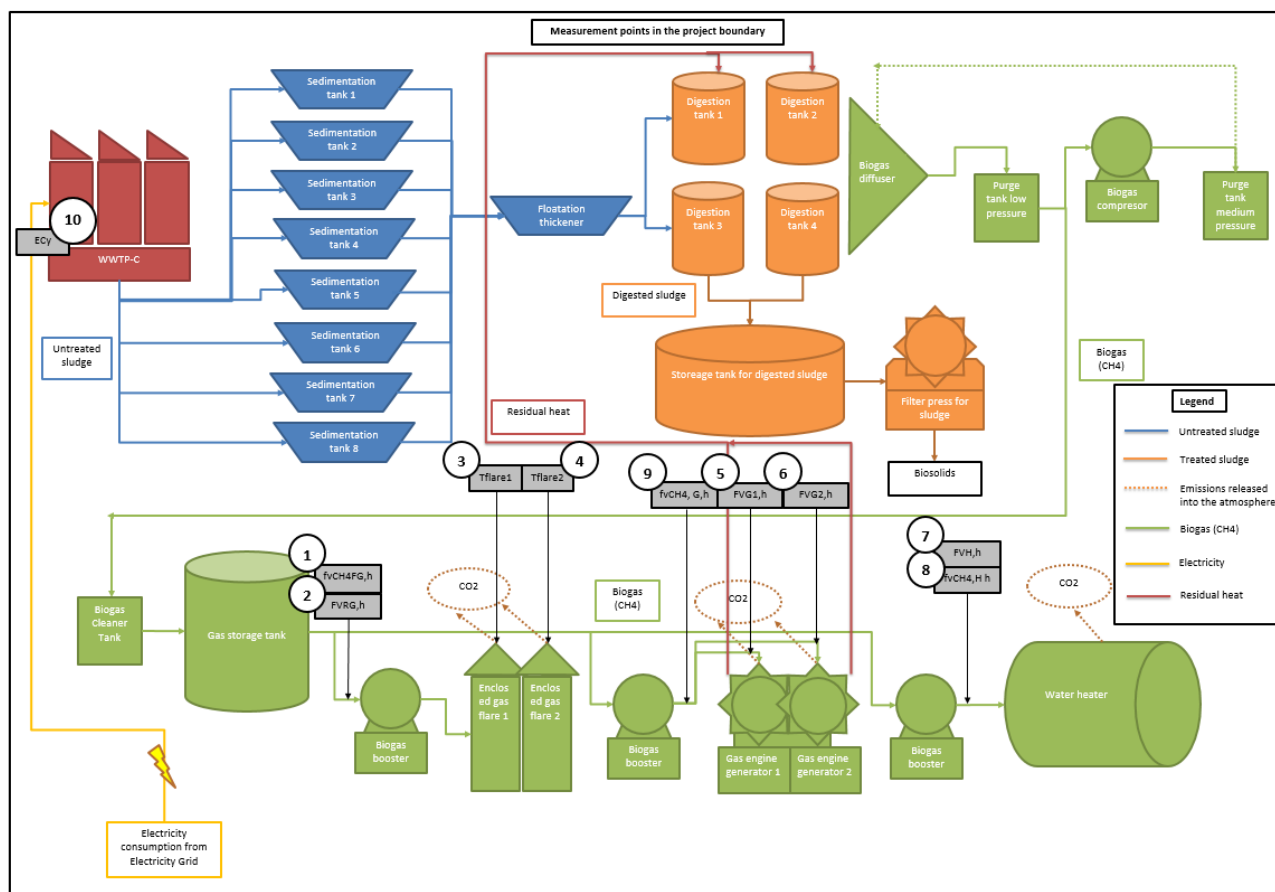
**B.2.6. Changes to project design**

There are no changes to the project design.

**SECTION C. Description of monitoring system**

The line diagram of the project boundary, showing all relevant monitoring points is the following:

**Figure 6: Diagram of control parameters of CDM Project No. 2341 (Recovery and combustion of methane)**

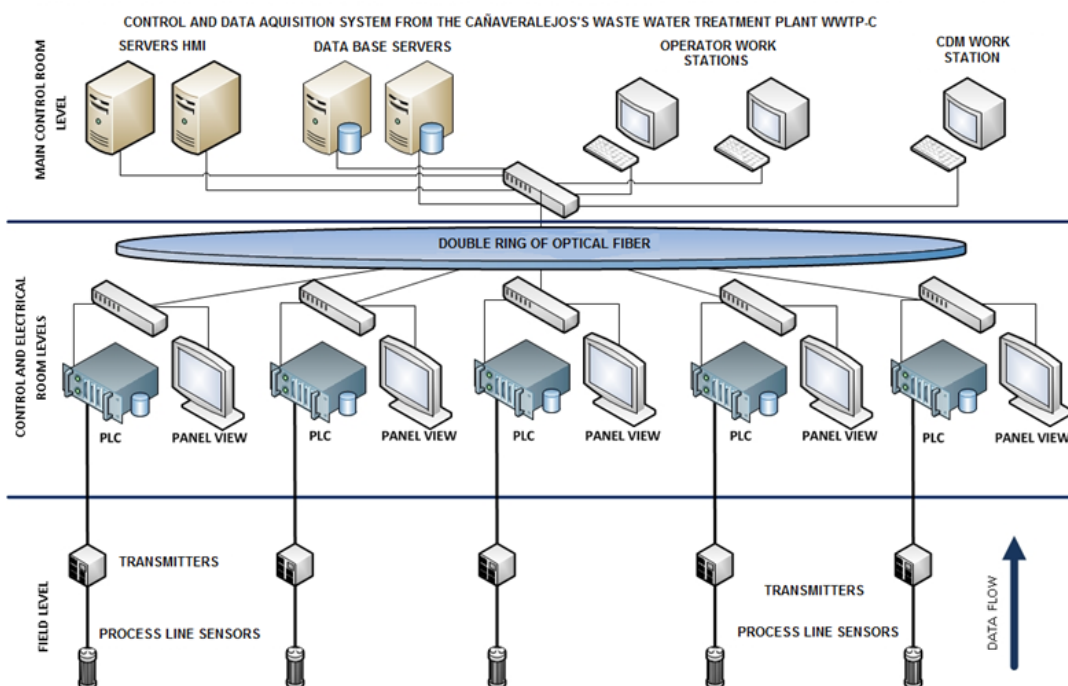


## Description Supervisory Control and Data Acquisition – SCADA

SCADA is a set of hardware and software (system) that are intended for the collection of information, usually in real-time in order to provide feedback on a process development under controlled conditions. SCADA is the tool that supports the proper functioning of the system and the WWTP-C process and therefore contributes to generate stable biogas, as well as its capture and combustion.

The SCADA of the Wastewater Treatment Plant of Cañaveralejo (WWTP-C) is formed by the following three levels. (See figure 7):

**Figure 7. Data control system of WWPT-Cañaveralejo**



### a) Field level:

This level constitutes the set of measuring instruments installed in the processing lines, which, by nature, measure different measurement variables. On the other hand, values are sent by wiring to their field installed transmitters. The transmitters have a local display panel of the measure and they are responsible for interpreting the sent values by the sensor and to display the result on the screen, and they also convert digital signals into a voltage signal and analogue signals into electrical current signals from 4 to 20 mA.

### b) Level of electrical and control rooms:

This level is made up of 5 electrical control rooms located on 5 strategic divisions of the plant (Water or elevation, Settlers, Digesters, Dehydration and generation) in each electrical and control room there is a Programmable Logic Controller PLC and a View panel or computer control. The PLC receives via a copper cable the signals from the field transmitters. The Signals depending on their digital or analogous nature reach the PLC to input or analogue cards respectively. The PLC's are responsible for converting the voltage or current signals received in its input cards in numerical values of the process variables measured in the field. The interpreted values in the PLC's are sent to two servers in a HMI (Human Machine Interface) application, through an Ethernet network built on a dual fibre optic ring that runs the plant. Local view panel with an HMI application allow monitoring and control of treatment processes.

## c) Level of main control room:

This level is formed by two HMI (Human Machine Interface) application servers (redundantly one of the other) that allow monitoring and equipment control and treatment variables. There are also two database servers (redundantly one of the other) with ORACLE installed. There are computers or workstations located in the control room that comply the specific process operation stations, process and CDM reporting, and the treatment process state visualizer.

The HMI (Human Machine Interface) application included on control servers SCADA is charged of handles stored in servers ORACLE database, in the form of trends, process variables measures at the field level and translated by the PLC in numerical values. These trends keep instantaneous values measured in the field in intervals of 30 seconds, for a period of 3 months. Its main function is to allow the operator and its respective chief, daily take operating decisions.

The workstation is in charge of the CDM projects reports generation, and it has developed a program in Microsoft Excel in order to control its variables which automatically reports averages by hour the instantaneous values stored in a trend form of the monitoring variables that correspond to both CDM projects (2285 and 2341). These average hourly values calculated by the program from the trend data are stored by this, in the CDM report tables which exist on the database servers in the SCADA. The information located in the CDM tables will be stored during the crediting period plus 2 year.

As this project is connected with another activity from the CDM project "Displacement of the electricity of the national electric grid by the auto-generation of renewable energy in the Cañavalejo Wastewater Treatment Plant (WWTP-C) of EMCALI in Cali, Colombia" (Reference 2285), the measures related to electric engines generators also appear as monitored parameters in the project mentioned above. See Figure 8.

Through the SCADA system, the operation information is collected, stored, processed and controlled.

**Table1. Parameters collected parameters by the SCADA**

Parameter		Unit	Frequency of Collection of data
$fV_{CH4G,h}$ $fV_{CH4FG,h}$ $fV_{CH4H,h}$	Volumetric fraction of methane in biogas fed into the engines of the electric generators or combusted in flares and/or water heater	$\mu$ V/V	Continuous
$FV_{G,h}$ $FV_{RG,h}$ $FV_{H,h}$	Volumetric flow rate of biogas fed into the engines of the electric generators, flared and/or combusted in water heater	m <sup>3</sup> /h	Continuous
$T_{flare}$	Temperature of the exhaust gas of the flares	°C	Continuous

### SCADA Stability and Security Aspects

SCADA stability is offered by having redundancy from the level of electrical and control rooms. From this level redundancy is manifested by the double fibre optic ring which goes through the plant communicating PLC's and workstations so that they work as a system. The panel views installed in each electrical room allow control of the entire plant becoming redundant one of the others.



In the main control room, the redundancy in HMI (Human Machine Interface) servers and redundancy in the database servers. In case one of the servers fails, the other assumes the workload automatically. Once the server resets this fault, it automatically synchronizes again with the one in service and continues its normal operation. This applies to both applications HMI (Human Machine Interface) servers as the database server. Each server has inside an array of RAID 5 Array (HDD) hard drives which also allow replacement of hard drives. Each server has a dual power supply.

As for the security of SCADA the HMI (Human Machine Interface) application can be accessed only by entering specified username and password for each operator. This application offers various levels of access according to user profiles.

User activity in the system is recorded by an event registration. For databases and registered data themselves we must say that the ORACLE database can only be accessed with username and password. The data is written to the database only by the HMI (Human Machine Interface) application automatically and by the Microsoft Excel program. These have an encrypted code in their user name and password that allows them to fulfil their function. Users access to these programs, as mentioned above, by entering a username and password.

### **Data Flow:**

The parameters within the Monitoring Plan of the CDM project are associated with SCADA instruments installed within the operating process WWWT-C at the field level. Each parameter variables are recorded by the SCADA every 30 seconds in a database called Trends. The values of this database are stored temporarily during the last three months of the process. This is because these are used in order to control the process by evaluating trends. A program in Microsoft Office Excel v.2007, use this temporary database (Trend) and resume / groups corresponding to the monitoring parameters of the project. . This program aggregates the values of the parameters CDM in hourly basis to include them in the excel spreadsheets used for the CDM purposes (ER calculations). The data is stored up to 2 years after the end of the crediting period of the project.

The Data control and CDM operation team is in charge of downloading all the information from this Scada system regarding to the monitoring parameters required by the methodology, the team aggregates and prepares the emission reduction calculations, and make the periodic revision of the information obtained.

### **Organizational Structure of the monitoring system**

The PP has assigned operational team of plant for data monitoring, archiving and analyzing and is reported to Wastewater treatment department chief.

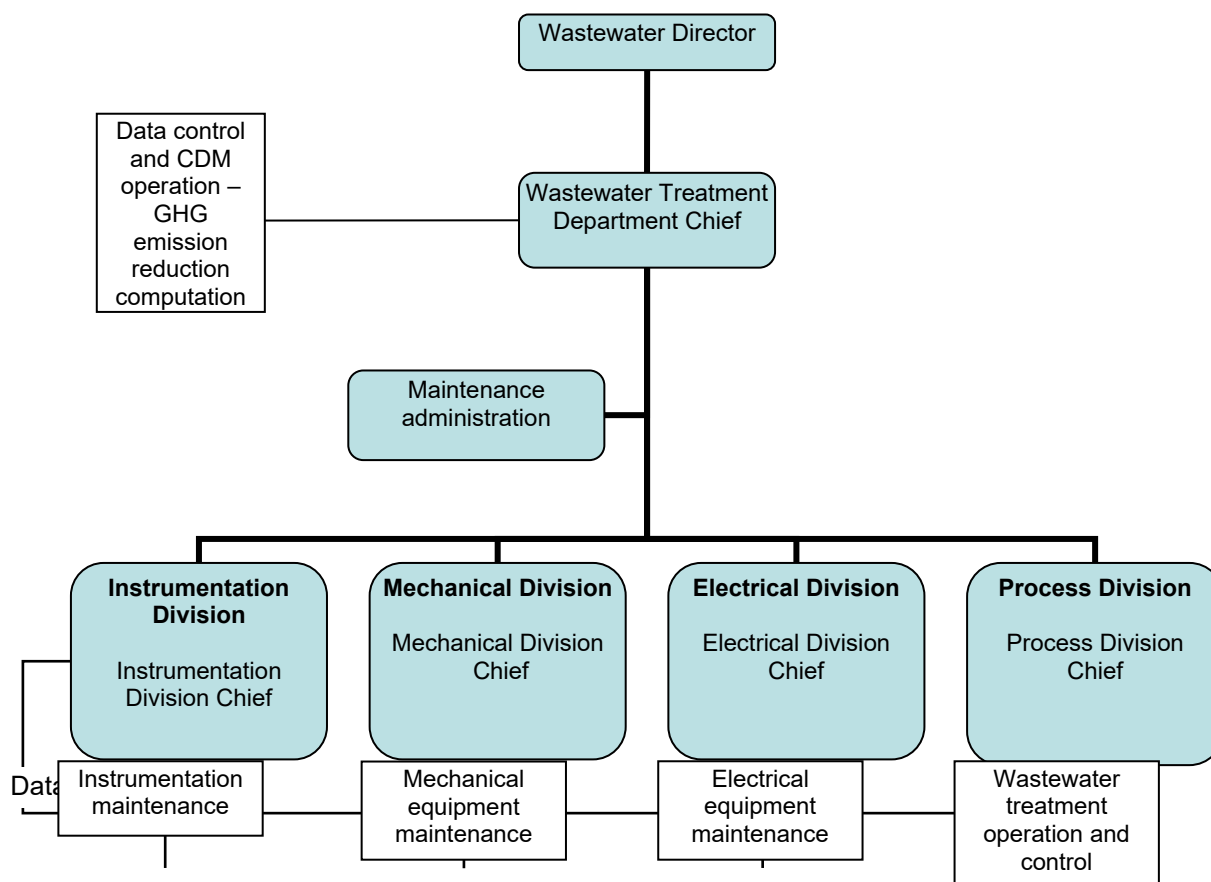
There is an operational and management team which is in charge of the GHG Data Control and CDM Operation, which is also responsible to operate and maintain the wastewater treatment system and implement the monitoring plan. The team is responsible for daily monitoring of the processes in accordance to the quality assurance and control of each parameter as per the monitoring plan.

In addition, a technician responsible in recording the monitored data and report any abnormalities to plant chief on daily basis. The aggregated monitored and recorded data will be stored electronically and in hard copy format up to 2 years after the end of crediting period or the last issuance of CERs, whichever is later. The monitored and recorded data is used and presented to DOE during CERs verification. The wastewater plant chief has reviewed the work performed by the technician and making final reporting to the management of the PP.

The roles and responsibilities performed by the team members are as below:

.

Figure 8. Monitoring Plan Organizational and Management Structure



In order to manage CDM projects WWTP- Cañaveralejo, the direction of the WWTP-C assigned to the Maintenance Management Division as a technical support from control activities, monitoring and results calculation of the CDM project activity.

#### 1. Direction of WWTP – Cañaveralejo.

Direction of WWTP- Cañaveralejo is responsible for:

- Administrative direction and monitoring of the CDM projects activities and the monitoring plan of WWTP – Cañaveralejo of EMCALI
- Annual review of performance monitoring plan and approval of changes from the monitoring plan in case they are required.
- Approval of the annual calculations of GHG reductions made by the Maintenance Management Division.
- Review and confirm the raw data collected, aggregated and emission reduction calculations done by the technician.
- Assist the technician during verification.
- Responsible for revision of the reporting of the plant Estimated emission reductions during the monitoring period and the outcome of the verification and status of issuance of CER.

## 2. Instrumentation Division.

Instrumentation division is responsible for:

- Maintenance of control and instrumentation equipment of the WWTP-C, including the maintenance of the Supervisory Control and Data Acquisition - SCADA,
- Preparation of the annual program of preventive and corrective maintenance of the WWTP-C instruments
- Preparation of a weekly schedule of preventive and corrective maintenance of the WWTP-C instruments
- Review and approval of work orders by the Chief of instrumentation Division
- Archives of work orders for a period of 10 +2 years in instrumentation office.
- Supervision and control of the operation of the data servers, as well as monitoring and supervision of the maintenance activities SCADA hired through an outsourced service.
- Provide the GHG data control and CDM operation team with the required data for the monitoring of the GHG reductions.

## 3. Process Division.

The process division is responsible for the following activities:

- Preparation of monthly reports of the results of the plant operations.
- Operate and control the process of the Wastewater treatment.
- With regard to the CDM management projects WWTP-Cañaveralejo, the WWTP-C direction assigned to the Maintenance Management Division as support and technical support in activities control, monitoring and calculations results of the CDM project activity.
- Provide the GHG data control and CDM operation team with the required data for the monitoring of the GHG reductions.

## 4. Maintenance Management Division.

The Maintenance Management Division is responsible for:

- Computation of GHG emissions reduction of the two CDM projects and presentation to the WWTP-C direction for approval.
- Storage and control of computation and the results of GHG emission reductions of CDM projects in the servers' database from the control system located in the control room of the WWTP-C for a period of 10 + 2 years on magnetic media.
- Control and monitoring of statistical techniques and management trends applied to the variables of the monitoring plan of the two CDM projects.
- Provide the GHG data control and CDM operation team with the required data for the monitoring of the GHG reductions.

### 5. Mechanical Division.

The Mechanical Division is responsible for the following:

- General maintenance of mechanical equipment of WWTP-Cañaveralejo.
- Preparation of the annual program of WWTP-C mechanical equipment maintenance.
- Preparation of a weekly schedule of WWTP-C mechanical equipment maintenance.
- Review and approval of work orders by the mechanical division chief and subsequent delivery of orders to the maintenance management division.
- Archives of work orders for a period of 10 +2 years in instrumentation office.
- Provide the GHG data control and CDM operation team with the required data for the monitoring of the GHG reductions.

### 6. Electrical Division.

Electrical division is responsible for the following:

- General maintenance of the plant electrical equipment (preventive, corrective and predictive).
- Generators operation and maintenance.
- Preparation of the annual WWTP-C program electrical equipment maintenance.
- Preparation of a weekly schedule of the WWTP-C electrical equipment maintenance.
- Review and approval of work orders by the Electrical division chief and subsequent delivery of maintenance orders of maintenance management division.
- Archives of work orders for a period of 10 +2 years in the electrical division office.
- Provide the GHG data control and CDM operation team with the required data for the monitoring of the GHG reductions.

### **GHG Data Control and CDM Operation**

The operational and management team is in charge of GHG data collection from the rest of the departments. Also, they are responsible for:

- Collect the data on the various monitoring parameters from the rest of Divisions as per the monitoring plan.
- Report to the plant chief if there any abnormalities
- Use defined protocols and routine procedures, with good, professional data entry, extraction and reporting will be encouraged to maximize transparency of data archiving
- Data aggregation and emission reduction calculations
- Data for various parameters aggregated and used in emission reduction calculations.

Coordinate with the DOE during verification

**Procedure of WWTP- Cañaveralejo staff training**

The WWTP-C staff training method according with the operation, maintenance, calibration and project equipment monitoring activity is as follows:

Suppliers, who provide equipment, instruments and systems to WWTP-C, have to adapt staff training to the WWTP-C technical staff according to the operation and / or maintenance.

The training is considered appropriate when the trained staff show the sufficient skills to operate the equipment.

**Quality Assurance and Quality Control.**

Quality is assured through the calibration and verification of the measurement equipment. All monitoring equipment is calibrated according to the manufacturer's suggestions. The frequency of calibration is carried out according to the manufacturer's instruction, therefore the calibration activity and / or verification of each monitoring equipment ensures that the equipment operates at the indicated level of accuracy. Project proponent will take responsibility for the quality assurance and quality control for recording, maintaining and archiving all the data by appointing consultants and/or technical support team to carry out the system analysis, equipment calibration and overall maintenance on a regular basis throughout the crediting period. PP has provided necessary training on data monitoring and recording to all the staff personnel involved in the monitoring process, in order to improve the efficiency of their work.

**Emergency procedure**

PP has implement an Emergency Procedure in the plant to handle an emergency situation in the plant, and measures to be taken to ensure that there is no unintended methane leakage from the system. All the plant operators have been familiarized on the procedure.

With respect to the emergency procedures, EMCALI has installed a backup PLC, which captures the information each 5 minutes and aggregates hourly, sending this information to the EMCALI's control center, located 3 km far from the plant. Hence, in case of any emergency, the information on ERs is easily and reliably recovered and stored. During the on-site visit, the DOE reviewed the abovementioned PLC, and found it properly maintained and operative.

**Uncertainty in data**

Some uncertainties may result due to malfunction of meters, calibration issues and wrong data collection (gaps in manual log sheets, human errors by plant operators). The operator is expected to put best efforts to prevent such errors; however regular internal audits shall rectify any such uncertainty in the monitored data.

**SECTION D. Data and parameters**

The monitored parameters are described below:

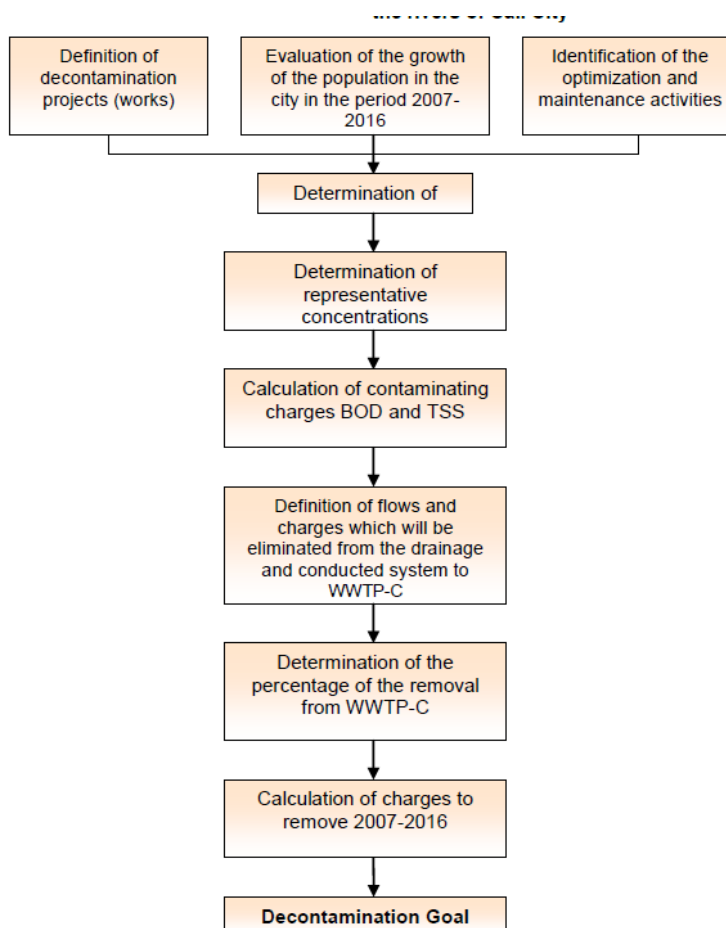
- |         |  |   |
|---------|--|---|
| 1.      | $f_{\text{CH}_4, \text{FG}, \text{h}}$ : | Average volumetric fraction of methane in biogas ( $\mu\text{V}/\text{V}$ ) combusted in flares ( $\mu\text{V}/\text{V}$ ): |
| 2.      | $FV_{\text{RG}, \text{h}}$ :             | Volumetric biogas flow rate carried for combustion in the flare ( $\text{m}^3/\text{h}$ )                                   |
| 3 and 4 | $T_{\text{flare}}$ :                     | Temperature in the exhaust gas of the flares ( $^{\circ}\text{C}$ )   |
| 5 and 6 | $FV_{\text{G}, \text{h}}$ :              | Volumetric biogas flow rate carried to the engines of the electric generators ( $\text{m}^3/\text{h}$ ).                    |
| 7.      | $FV_{\text{H}, \text{h}}$ :              | Volumetric biogas flow rate carried for combustion in water heater ( $\text{m}^3/\text{h}$ )                                |
| 8.      | $FV_{\text{CH}_4 \text{ H}, \text{h}}$ : | Average volumetric fraction of methane in biogas combusted in water heater ( $\mu\text{V}/\text{V}$ )                       |
| 9.      | $FV_{\text{CH}_4, \text{G}, \text{H}}$ : | Average volumetric fraction of methane in biogas fed into the engines of the electric generators ( $\mu\text{V}/\text{V}$ ) |
| 10.     | $\text{ECy}$ :                           | Grid electricity consumption in year "y" (MWh)  |
| 11.     | $\text{EF}$                              | Grid Emission Factor ( $\text{tCO}_2/\text{MWh}$ )  |

## D.1. Data and parameters fixed ex ante

Data/Parameter	Qy										
Unit	m <sup>3</sup> /year										
Description	The flow of influent wastewater to the WWTP-C in year “y” of a crediting period										
Source of data	Estimations of the Planning Department of EMCALI										
Value(s) applied	<table> <tr> <th>Year</th><th>Estimation of the flow of influent wastewater to PTAR-C (m<sup>3</sup>/year)</th></tr> <tr> <td>2015</td><td>208,796,072</td></tr> <tr> <td>2016</td><td>209,723,230</td></tr> <tr> <td>2017</td><td>210,248,620</td></tr> <tr> <td>2018</td><td>211,052,157</td></tr> </table>	Year	Estimation of the flow of influent wastewater to PTAR-C (m <sup>3</sup> /year)	2015	208,796,072	2016	209,723,230	2017	210,248,620	2018	211,052,157
Year	Estimation of the flow of influent wastewater to PTAR-C (m <sup>3</sup> /year)										
2015	208,796,072										
2016	209,723,230										
2017	210,248,620										
2018	211,052,157										
Choice of data or measurement methods and procedures	<p>EMCALI, based on the extensive study of the Planning Department of EMCALI “Sanitation and wastewater management plan for the years 2007-2016”, foresees the increase of influent wastewater to the WWTP-C as the function of three following components: definition of the decontamination projects, evaluation of the growth of Cali in the following years and the identification of the optimization and maintenance activities in the city. It needs to be emphasized that the increase of wastewater inflow is <b>NOT</b> due to the activity of the proposed CDM project but due to the three components already mentioned above inherent to the development of the city of Cali.</p> <p>EMCALI realized a diagnostic of the sewer system of the city. Main wastewater streams were identified and the causes with possible solutions were evaluated. Some of the solutions are oriented into the optimization of the grids, having in mind that this action would reduce wastewater that due to false functioning is conducted to canals and rivers; other works are connected to the implementation of the sanitary collectors that will block and redirect wastewaters to the WWTP-C that currently are disposed by some of the sectors in an inadequate way; in other cases a necessity for the optimization of the separation and improvement structures of the sewer maintenance system of the city was identified. For a better understanding of the methodology applied, a graph below presents the steps taken for the calculation of the Decontamination Goal. To project the population of Cali the information of the Administrative Department of Planning DAP-97 was taken into account, having in mind that DANE (the Administrative Department of the Municipal Planning) only registered the population in year 2005 without further projections. On the other hand, Registry 2005 presented the number of habitants for the city of Cali similar to the numbers projected by DAP- 97, which allows deducing that the projections would proceed with the same tendency.</p> <p>For the ex-ante calculations of the baseline and the project activity emissions more conservative scenery for the growth of the population, decontamination projects and the optimization and maintenance activities was adopted, i.e., 25 percent in 2008 and 2 percent uncertainty level for years 2009-2018 in comparison with the initial projection presented by EMCALI<sup>26</sup>. This higher uncertainty level of 25% for the year 2008 was adopted due to the unexpected delay in the planned by EMCALI for this year maintenance and expansion of the sewer system grid. These works are delayed in function of other constructions being developed in Cali by the municipality (for example, the constructions of massive transportation system for Cali – MIO by acronyms in Spanish). It is foreseen that this delay resulting in the lower wastewater inflow to the WWTP-C will extend only over the year 2008 and therefore, the following years would continue with the 2% uncertainty level.</p>										

The result of these calculations is available upon the request. At the moment of the preparation of the present document, no other policies, plans, strategies or regulations are known to present risks to the calculation of the baseline emissions and therefore no higher uncertainty level to the one already included in the estimation of the amount of the inflow wastewater (25% in 2008 and 2% in the rest of the years of the crediting period) was included in the calculation.

**Figure 5: Flow graph for the calculation of the decontamination goal of the rivers of Cali City**



Choice of data or measurement methods and procedures

Purpose of data/parameter

Calculation of ex ante emissions reductions

Additional comments

The calculation of the GHG emission reduction will be based on the direct measurement of the amount of methane captured and used as fuel in the engine of the electric generator or burned as emergency in the flares or water heater. Once the project is implemented, this parameter will not be necessary for the calculation.



Data/Parameter	TSS
Unit	g/m <sup>3</sup>
Description	Average concentration of total suspended solids (TSS) present in the influent wastewater entering the WWTP-C.
Source of data	Average of measurements made by the WWTP-C's laboratory during the last three years of the WWTP-C operation (2004, 2005 and 2006). Data are stored in the Process Area.
Value(s) applied	184
Choice of data or measurement methods and procedures	<p>The WWTP-C's Laboratory takes a daily hourly samples comprised by influent wastewater in quotas proportional to the flow volume entering the WWTP-C. The total suspended solids (TSS) are determined by means of the gravimetric technique aforementioned in the Standard Methods for the Examination of Water and Wastewater, Edition 20, as per Methodology 2540D; for dry conditions between 103-105C.</p> <p>Data of the TSS analysis are daily introduced by the Laboratory stuff (Administrative Analyst) into the form "Tab.1 Parámetros fisicoquímicos I agua cruda". The data are next revised and "published" in intranet by the Laboratory Chief (Professional of the Supporting Process).</p> <p>Data with the analysis are archived for 10 years in paper copy in folder no. 5 "Informes Análisis Línea de Agua WWTP-C" for each year. The Process Area has direct access to the data already "published" in intranet and is able to process them. The Process Area prepares every month, semester and year reports of the functioning of the Plant. Based on these data from the last 3 years (2004, 2005, 2006) the average concentration of TSS in influent wastewater entering the WWTP-C was calculated. Detailed calculation is available upon the request.</p>
Purpose of data/parameter	Calculation of emission reduction
Additional comments	The calculation of the GHG emission reduction will be based on the direct measurement of the amount of methane captured and used as fuel in the engine of the electric generator or burned as alternative in the flares or water heater. Once the project is implemented, this parameter will not be necessary for the calculation.

Data/Parameter	$\mu_{\text{removal TSS}}$
Unit	Fraction
Description	Average efficiency of the removal of TSS in the WWTP-C
Source of data	Average of measurements made by the WWTP-C's laboratory during the last three years of the WWTP-C operation (2004, 2005 and 2006). Data are stored in the Process Area.
Value(s) applied	0.6
Choice of data or measurement methods and procedures	TSS removal efficiency depends on the sedimentation tanks operation. It is possible to apply this efficiency to calculate the sludge produced which afterwards is taken to the anaerobic digesters. The average sedimentation tanks efficiency varied in years 2006 and 2007 between 63 and 67% (efficiency of the TSS removal). For the purposes of the calculation of the amount of sludge - lower, more conservative value was adopted.
Purpose of data/parameter	Calculation of emissions reduction
Additional comments	The calculation of the GHG emission reduction will be based on the direct measurement of the amount of methane captured and used as fuel in the engine of the electric generator or burned as alternative in the flares or water heater. Once the project is implemented, this parameter will not be necessary for the calculation.

Data/Parameter	%DM
Unit	Percentage
Description	Percentage of dry matter from untreated sludge generated from the WWTP-C sedimentation tanks.
Source of data	Average of measurements made by the WWTP-C's laboratory. Data is stored in the Process Area.
Value(s) applied	1.21
Choice of data or measurement methods and procedures	<p>According to the Methodology AMS III.H, Version 09, Scope 13, Mar 28, 2008, the default value for the fraction of degradable organic content of non-treated sludge (<math>DOC_{y,s,untreated}</math>) is 0.05. Such value relates to domestic sludge in wet basis, considering 10% of dry matter. Due to the fact that dry matter from non-treated sludge at the WWTP-C is substantially different from the value reported by the Methodology, the value was amended.</p> <p>Section B.4 shows details of the calculation, and Appendix 3 Baseline information, shows the monthly average data for 2006 and 2007 of the content of total solids (TS) in non-treated sludge. The WWTP-C laboratory takes specific samples twice a day from the sludge flowing out from each sediment tanks. The total suspended solid (TSS) is determined by means of the gravimetric technique as per Methodology 2540H for solids and semisolids as per the Standard Methods for the Examination of Water and Wastewater. Data of the TSS analysis are daily introduced by the Laboratory stuff (Administrative Analyst) into the form "<i>Tab.1 Parámetros físicoquímicos agua cruda</i>". The data are next revised and "published" in intranet by the Laboratory Chief (Professional of the Supporting Process).</p> <p>Data of the analysis are archived for 10 years in paper copy in folder no. 5 "Informes Análisis Línea de Agua WWTP-C" for each year. The Process Area has direct access to the data already "published" in intranet and is able to process them. The Process Area prepares monthly, semester and yearly reports of the functioning of the plant. Based on the most recent data of the years 2006 and 2007 of the Plant's operation, the average concentration of TSS in influent wastewater entering WWTP-C was calculated.</p>
Purpose of data/parameter	Calculation of emissions reduction
Additional comments	The calculation of the GHG emission reduction will be based on the direct measurement of the amount of methane captured and used as fuel in the engine of the electric generator or burned as emergency in the flares or water heater. Once the project is implemented, this parameter will not be necessary for the calculation.

<b>Data/Parameter</b>	GWP <sub>CH4</sub>
Unit	-
Description	Methane Global-Warming Potential
Source of data	Climate Change mitigation Climate Change 2014 – WGR Report AR5 -IPCC
Value(s) applied	21 for the first commitment period 25 for the second commitment period
Choice of data or measurement methods and procedures	Calculation of baseline emission and project emission
Purpose of data/parameter	Calculation of baseline emission and project emission
Additional comments	--

<b>Data/Parameter</b>	D <sub>CH4</sub>
Unit	kg/Nm <sup>3</sup>
Description	Methane Density
Source of data	Tool to determine project emissions from flaring gases containing methane Refer to UNFCCC Annex 13 Defined in the methodological tool EB-68 Annex 15 CDM UNFCCC – Table 2006 IPCC Guidelines for National Greenhouse Gas Inventories
Value(s) applied	0.7168
Choice of data or measurement methods and procedures	Calculation of baseline emission and Project emission
Purpose of data/parameter	-
Additional comments	

## D.2. Data and parameters monitored

Data / Parameter	$f_{V_{CH_4FG,h}}$
Unit	$\mu V/V$
Description	Volumetric fraction of methane in biogas fed into flares
Measured/ Calculated / Default	Measured
Source of data	Continuous flow meter. The measurement location is shown in Figure 5. Measurement Point 1
Value(s) of monitored parameter	Average value for this Monitoring Period: <b>62.09%</b> See data table – spreadsheets for more information

Monitoring equipment	<b><u>Equipment 1:</u></b> Infrared methane concentration meter Beacon 110, Serial B110-11Z004, Sensor 65-1011RK CH4 Serial 7551 <u>Calibration frequency:</u> Annual (According to the suggestion made by the manufacturer) <u>Precision:</u> $\pm 5\%$ , reading $\pm 2\%$ complete scale <u>Date of installation:</u> 27/06/2012 <u>Calibration records:</u> <table border="1"> <thead> <tr> <th>Date of calibration</th> <th>Certificate's code</th> <th>Company Certificate</th> <th>Next due calibration</th> </tr> </thead> <tbody> <tr> <td>Calibration 5: 29/04/2014</td> <td>HX-CC-MG-1878</td> <td>HIGIELECTRONIX LTDA</td> <td>30/04/2015</td> </tr> <tr> <td>Calibration 6: 14/05/2015</td> <td>HX-CC-MG-3269</td> <td>HIGIELECTRONIX LTDA</td> <td>15/05/2016</td> </tr> </tbody> </table>	Date of calibration	Certificate's code	Company Certificate	Next due calibration	Calibration 5: 29/04/2014	HX-CC-MG-1878	HIGIELECTRONIX LTDA	30/04/2015	Calibration 6: 14/05/2015	HX-CC-MG-3269	HIGIELECTRONIX LTDA	15/05/2016
	Date of calibration	Certificate's code	Company Certificate	Next due calibration									
	Calibration 5: 29/04/2014	HX-CC-MG-1878	HIGIELECTRONIX LTDA	30/04/2015									
	Calibration 6: 14/05/2015	HX-CC-MG-3269	HIGIELECTRONIX LTDA	15/05/2016									
	<b><u>Equipment 2:</u></b> Infrared methane concentration meter Beacon 110, Serial M2A49903 <u>Calibration frequency:</u> Annual (According to the suggestion made by the manufacturer) <u>Precision:</u> $\pm 5\%$ , reading $\pm 2\%$ complete scale <u>Date of installation:</u> 29/04/2015 <u>Calibration records:</u> <table border="1"> <thead> <tr> <th>Date of calibration</th> <th>Certificate's code</th> <th>Company Certificate</th> <th>Next due calibration</th> </tr> </thead> <tbody> <tr> <td>Calibration 1: 13/11/2014</td> <td>HX-CC-MG-2471</td> <td>HIGIELECTRONIX LTDA</td> <td>12/11/2015</td> </tr> </tbody> </table>	Date of calibration	Certificate's code	Company Certificate	Next due calibration	Calibration 1: 13/11/2014	HX-CC-MG-2471	HIGIELECTRONIX LTDA	12/11/2015				
	Date of calibration	Certificate's code	Company Certificate	Next due calibration									
	Calibration 1: 13/11/2014	HX-CC-MG-2471	HIGIELECTRONIX LTDA	12/11/2015									
	<b><u>Equipment 3:</u></b> Infrared methane concentration meter Beacon 110, Serial HX-MGF-001 <u>Calibration frequency:</u> Annual (According to the suggestion made by the manufacturer) <u>Precision:</u> $\pm 5\%$ , reading $\pm 2\%$ complete scale <u>Date of installation:</u> 10/12/2015 <u>Calibration records:</u>												

	Date of calibration	Certificate's code	Company Certificate	Next due calibration
	Calibration 1: 04/12/2015	HX-CC-MG-4154	HIGIELECTRONIX LTDA	05/12/2016
	<b><u>Equipment 4:</u></b> Infrared methane concentration meter Beacon 110, Serial M2A615518 <u>Calibration frequency:</u> Annual (According to the suggestion made by the manufacturer) <u>Precision:</u> $\pm 5\%$ , reading $\pm 2\%$ complete scale <u>Calibration records:</u>			
	Calibration 1: 30/10/2016	HX-CC-MG-12105	HIGIELECTRONIX LTDA	31/10/2017
	Calibration 2: 14/02/2018	HX-CC-MG-8757	HIGIELECTRONIX LTDA	15/02/2019
Measuring/ Reading/ Recording frequency	Continuously Monitored, hourly recording			
Calculation method (if applicable)	Not applicable			
QA/QC procedures	<p><b>Quality Assurance:</b> given by the equipment manufacturer. The data is stored digitally in the SCADA. The meter is operated and calibrated according to the manufacturer's specifications</p> <p><b>Calibration:</b> The instrument is calibrated according to manufacturer's recommendations within one year</p> <p><b>Preventive Maintenance:</b> - Routine maintenance will be made to the instrument.</p> <p><b>Meter general technical specifications:</b>            Precision: <math>\pm 5\%</math> reading <math>\pm 2\%</math> complete scale</p> <p>Due to calibration delay in the measurement equipment Serial 7551, during the period 30/04/2015 - 13/05/2015 the maximum error of the equipment was applied as discount factor (5%) in accordance with paragraph 366 of the CDM Validation and verification standard.</p> <p>Due to calibration delay in the measurement equipment Serial M2A615518, during the period 31/10/2017 - 13/02/2018 the maximum error of the equipment was applied as discount factor (5%) in accordance with paragraph 366 of the CDM Validation and verification standard.</p>			
Purpose of data/parameter	Calculation of project emissions			

Additional comments	<p>Recording Frequency: Continuously.</p> <p>Data record: Electronic for crediting period + 2 years</p> <p>Due to calibration delay in the measurement equipment Serial 7551, during the period 30/04/2015 - 13/05/2015 the maximum error of the equipment was applied as discount factor (5%) in accordance with paragraph 366 of the CDM Validation and verification standard.</p> <p>Due to calibration delay in the measurement equipment Serial M2A615518, during the period 31/10/2017 - 13/02/2018 the maximum error of the equipment was applied as discount factor (5%) in accordance with paragraph 366 of the CDM Validation and verification standard.</p>
---------------------	--

<b>Data / Parameter</b>	$FV_{RG,h}$ :
Unit	Nm <sup>3</sup> /h
Description	Volumetric flow rate of biogas fed into flares
Measured/ Calculated / Default	Measured
Source of data	Continuous flow meter. The measurement location is shown in Figure 5. Measurement Point 2.
Value(s) of monitored parameter	<p>Total amount of biogas fed into flares during this Monitoring Period: <b>0 m<sup>3</sup></b></p> <p>See data table – spreadsheets for more information.</p>



Monitoring equipment	<p><b><u>Equipment 1:</u></b></p> <p>Endres+Hauser Thermal dispersion mass flow meter</p> <p>Serial Number D907E202000</p> <p><u>Calibration frequency:</u> Every 5 years (According to the suggestion made by the manufacturer).</p> <p><u>Precision:</u> <math>\pm 0,75\%</math></p> <p><u>Date of installation:</u> 08/01/2011</p> <p><u>Calibration records:</u></p> <p>Cal. Certificate: 1000122896, issued by Endress+Hauser</p> <p>Dated on: 18/10/2010, valid until: 17/10/2015</p> <p><b><u>Equipment 2:</u></b></p> <p>Endres+Hauser Thermal dispersion mass flow meter</p> <p>Serial Number F6103A02000</p> <p><u>Calibration frequency:</u> Every 5 years (According to the suggestion made by the manufacturer).</p> <p><u>Precision:</u> <math>\pm 0,75\%</math></p> <p><u>Date of installation:</u> 14/07/2015</p> <p><u>Calibration records:</u></p> <p>Cal. Certificate: 100192497, issued by HIGIELECTRONIX LTDA</p> <p>Dated on: 27/06/2012, valid until: 25/06/2017</p>
Measuring/ Reading/ Recording frequency	Continuously monitored and hourly accumulated recording
Calculation method (if applicable)	Not applicable
QA/QC procedures	<p><b>Quality Guarantee:</b> given by the equipment manufacturer.</p> <p><b>Calibration:</b> The instrument is calibrated according to manufacturer's recommendations within five (5) years</p> <p><b>Preventive Maintenance:</b> Routine maintenance will be made to the instrument.</p> <p><b>Meter general technical specifications:</b> Precision: <math>\pm 1\%</math> reading + 0.5% at complete scale standard precision</p> <p>Due to calibration delay in the measurement equipment Serial F6103A02000, during the period 25/06/2017 - 31/12/2018 the maximum error of the equipment was applied as discount factor (0.75%) in accordance with paragraph 366 of the CDM Validation and verification standard.</p>
Purpose of data/parameter	Calculation of project emissions <input type="checkbox"/>

Additional comments	<p>Recording Frequency: Continuously.</p> <p>Data record: Electronic for crediting period + 2 years</p> <p>Due to calibration delay in the measurement equipment Serial F6103A02000, during the period 25/06/2017 - 31/12/2018 the maximum error of the equipment was applied as discount factor (0.75%) in accordance with paragraph 366 of the CDM Validation and verification standard.</p>
---------------------	--

<b>Data / Parameter</b>	T <sub>flare1</sub>
Unit	°C
Description	Temperature in the exhaust gas of the flares to determine combustion efficiency in flare 1
Measured/ Calculated / Default	Measured
Source of data	<p>Continuous flow meter.</p> <p>Continuous temperature measurement meter by Thermocouple type K</p> <p>The measurement location is shown in Figure 6. Measurement Point 3</p>
Value(s) of monitored parameter	<p>Average value for this Monitoring Period: <b>25.01 °C</b></p> <p>See data table – spreadsheets for more information.</p>

Monitoring equipment	<p><b>Equipment 1</b></p> <p>Endres+Hauser Thermocouple Type K</p> <p>Serial F4004114168</p> <p><u>Calibration Frequency:</u> Annual (According to the suggestion made by the manufacturer)</p> <p>Precision Range: <math>\pm 0.75\%</math></p> <p><u>Date of installation:</u> 19/09/2013</p> <p>Calibration records:</p> <table border="1" data-bbox="480 528 1437 813"> <thead> <tr> <th>Date of calibration</th><th>Certificate's code</th><th>Company Certificate</th><th>Next due calibration</th></tr> </thead> <tbody> <tr> <td>Calibration 1: 31/07/2014</td><td>CA-14246</td><td>SAYTEC COLOMBIA</td><td>30/07/2015</td></tr> <tr> <td>Calibration 2: 04/08/2015</td><td>CA-15380</td><td>SAYTEC COLOMBIA</td><td>03/08/2016</td></tr> </tbody> </table> <p><b>Equipment 2</b></p> <p>Endres+Hauser Thermocouple Type K</p> <p>Serial L603F114168</p> <p><u>Calibration Frequency:</u> Annual (According to the suggestion made by the manufacturer)</p> <p>Precision Range: <math>\pm 0.75\%</math></p> <p><u>Date of installation:</u> 01/08/2016</p> <p>Calibration records:</p> <table border="1" data-bbox="480 1240 1437 1429"> <thead> <tr> <th>Date of calibration</th><th>Certificate's code</th><th>Company Certificate</th><th>Next due calibration</th></tr> </thead> <tbody> <tr> <td>Calibration 1: 01/08/2016</td><td>CC-T-16079</td><td>SAYTEC COLOMBIA</td><td>31/07/2017</td></tr> </tbody> </table>	Date of calibration	Certificate's code	Company Certificate	Next due calibration	Calibration 1: 31/07/2014	CA-14246	SAYTEC COLOMBIA	30/07/2015	Calibration 2: 04/08/2015	CA-15380	SAYTEC COLOMBIA	03/08/2016	Date of calibration	Certificate's code	Company Certificate	Next due calibration	Calibration 1: 01/08/2016	CC-T-16079	SAYTEC COLOMBIA	31/07/2017
Date of calibration	Certificate's code	Company Certificate	Next due calibration																		
Calibration 1: 31/07/2014	CA-14246	SAYTEC COLOMBIA	30/07/2015																		
Calibration 2: 04/08/2015	CA-15380	SAYTEC COLOMBIA	03/08/2016																		
Date of calibration	Certificate's code	Company Certificate	Next due calibration																		
Calibration 1: 01/08/2016	CC-T-16079	SAYTEC COLOMBIA	31/07/2017																		
Measuring/ Reading/ Recording frequency	Continuously monitored and hourly recording																				
Calculation method (if applicable)	Not applicable																				

QA/QC procedures	<p><b>Quality Guarantee:</b> given by the equipment manufacturer.</p> <p><b>Calibration:</b> The instrument is calibrated according to manufacturer's recommendations, every year</p> <p><b>Preventive Maintenance:</b> Routine maintenance will be made to the instrument.</p> <p><b>Meter general technical specifications:</b>  Precision: <math>\pm 0.75</math> °C  Temperature Ranges: -40°C to 1,200 °C  Recording Frequency: Continuously</p> <p>The thermocouple measures the temperature of the exhaust gas flow in the flare. A temperature higher than 500 °C indicates a significant amount of gas still flaring and that the flare is still operating.  An excessive high temperature in the monitoring point (higher than 700 °C) may indicate that the flare is not being properly operated or its capacity is not adequate for the current flow</p> <p>Due to calibration delay in the measurement equipment F4004114168, during the period 30/07/2015 - 03/08/2015 the maximum error of the equipment was applied as discount factor (0.75%) in accordance with paragraph 366 of the CDM Validation and verification standard.</p> <p>Due to calibration delay in the measurement equipment L603F114168, during the period 31/07/2017 - 31/12/2018 the maximum error of the equipment was applied as discount factor (0.75%) in accordance with paragraph 366 of the CDM Validation and verification standard.</p>
Purpose of data/parameter	This parameter is used to determine the efficiency in reducing methane in the flares.
Additional comments	<p>Recording Frequency: Continuously.</p> <p>Data record: Electronic for crediting period + 2 years</p> <p>The measured data are penalized from 30/07/2015 - 03/08/2015 with the maximum error of the instrument, 0.75%.</p> <p>The measured data are penalized from 31/07/2017 - 31/12/2018 with the maximum error of the instrument, 0.75%.</p>

<b>Data / Parameter</b>	T <sub>flare2</sub>
Unit	°C
Description	Temperature in the exhaust gas of the flare required to determine the combustion efficiency in flare 2
Measured/ Calculated / Default	Measured
Source of data	Continuous temperature measurement meter by Thermocouple type K. The measurement location is shown in Figure 6. Measurement Point 4

Value(s) of monitored parameter	Average value for this Monitoring Period: <b>26.55 °C</b> See data table – spreadsheets for more information.
Monitoring equipment	<p><b><u>Equipment 1:</u></b></p> <p>Endres+Hauser Thermocouple Type K Serial number D9002314168 <u>Calibration Frequency:</u> Annual (According to the suggestion made by the manufacturer) <u>Precision Range:</u> <math>\pm 0.75\%</math> <u>Date of installation:</u> 08/01/2011 <u>Calibration records:</u></p> <ul style="list-style-type: none"> <li>5<sup>th</sup> Calibration certificate: CA-15268, issued by SAYTEC COLOMBIA , Dated on 01/06/2015, valid until 31/05/2016</li> </ul> <p><b><u>Equipment 2:</u></b></p> <p>Endres+Hauser Thermocouple Type K Serial number F6005614168 <u>Calibration Frequency:</u> Annual (According to the suggestion made by the manufacturer) <u>Precision Range:</u> <math>\pm 0.75\%</math> <u>Date of installation:</u> 06/07/2016 <u>Calibration records:</u></p> <ul style="list-style-type: none"> <li>1<sup>st</sup> Calibration certificate: CC-T-16080, issued by SAYTEC COLOMBIA Dated on 06/07/2016, valid until 05/07/2017</li> </ul>
Measuring/ Reading/ Recording frequency	Continuously monitored and daily recording
Calculation method (if applicable)	Not applicable

QA/QC procedures	<p><b>Quality Guarantee:</b> given by the equipment manufacturer.</p> <p><b>Calibration:</b> The instrument is calibrated according to manufacturer's recommendations within two (2) years</p> <p><b>Preventive Maintenance:</b> Routine maintenance will be made to the instrument.</p> <p><b>Meter general technical specifications:</b>  Precision: <math>\pm 0.75</math> °C  Temperature Ranges: -40°C to 1,200 °C  Recording Frequency: Continuously</p> <p>The thermocouple measures the temperature of the exhaust gas flow in the flare. A temperature higher than 500 °C indicates a significant amount of gas still flaring and that the flare is still operating.  An excessive high temperature in the monitoring point (higher than 700 °C) may indicate that the flare is not being properly operated or its capacity is not adequate for the current flow.</p> <p>Due to calibration delay in the measurement equipment D9002314168, during the period 20/09/2014 - 31/05/2015 the maximum error of the instrument used to measure the data (0.75%) is applied in accordance with paragraph 366 of the CDM Validation and verification standard since the calibration was delayed.</p> <p>Due to calibration delay in the measurement equipment F6005614168, during the period 31/05/2016 - 05/07/2016 the maximum error of the instrument used to measure the data (0.75%) is applied in accordance with paragraph 366 of the CDM Validation and verification standard since the calibration was delayed.</p> <p>Due to calibration delay in the measurement equipment F6005614168, during the period 05/07/2017 - 31/12/2018 the maximum error of the instrument used to measure the data (0.75%) is applied in accordance with paragraph 366 of the CDM Validation and verification standard since the calibration was delayed.</p>
Purpose of data/parameter	<p>This parameter is used to determine the efficiency in reducing methane in the flares.</p>
Additional comments	<p>Recording Frequency: Continuously.</p> <p>Data record: Electronic for crediting period + 2 years</p> <p>The measured data are penalized from 20/09/2014 - 31/05/2015 with the maximum error of the instrument, 0.75%.</p> <p>The measured data are penalized from 31/05/2016 - 05/07/2016 with the maximum error of the instrument, 0.75%.</p> <p>The measured data are penalized from 05/07/2017 - 31/12/2018 with the maximum error of the instrument, 0.75%.</p>

Data / Parameter	FV <sub>G1,h</sub> :
Unit	Nm <sup>3</sup> /h
Description	Volumetric flow rate of biogas fed into the electric generator engine 1
Measured/ Calculated / Default	Measured
Source of data	Volumetric Flow Meter principle of thermal dispersion with continuous measurement. The measurement location is shown in Figure 6. Measurement Point 5.
Value(s) of monitored parameter	Total amount of biogas fed into engine 1 during this Monitoring Period: <b>8,709,271.45 m<sup>3</sup></b> See data table – spreadsheets for more information.
Monitoring equipment	<p><b>Equipment 1</b></p> <p>Thermal dispersion mass flow</p> <p>Series Number D907E302000</p> <p><u>Calibration Frequency:</u> Every 5 years (According to the suggestion made by the manufacturer)</p> <p><u>Instrument Accuracy:</u> ± 1% of reading, ± 0.5% of complete scale</p> <p><u>Date of installation:</u> 08/01/2011</p> <p><u>Calibration records:</u></p> <p>Calibration certificate 1000122896, issued by Endress + Hauser</p> <p>Dated on 18/10/2010, valid until 17/10/2015</p> <p><b>Equipment 2</b></p> <p>Thermal dispersion mass flow</p> <p>Series Number F6103B02000</p> <p><u>Calibration Frequency:</u> Every 5 years (According to the suggestion made by the manufacturer)</p> <p><u>Instrument Accuracy:</u> ± 1% of reading, ± 0.5% of complete scale</p> <p><u>Date of installation:</u> 21/01/2013</p> <p><u>Calibration records:</u></p> <p>Calibration certificate 1000192497, issued by Endress + Hauser</p> <p>Dated on 26-06-2012, valid until 25/06/2017</p>
Measuring/ Reading/ Recording frequency	Continuously monitored and hourly accumulated recording
Calculation method (if applicable)	Not applicable

QA/QC procedures	<p><b>Quality Guarantee:</b> given by the equipment manufacturer.</p> <p><b>Calibration:</b> every 5 years, time specified by the manufacturer for this equipment. The instrument is calibrated according to manufacturer's recommendations within five (5) years.</p> <p><b>Preventive Maintenance:</b> Routine maintenance will be made to the instrument.</p> <p><b>Meter general technical specifications:</b> Precision: <math>\pm 1\%</math> reading + 0.5% at complete scale standard precision</p> <p>Due to calibration delay in the measurement equipment F6103B02000, during the period 25/06/2017 - 31/12/2018 the maximum error of the instrument used to measure the data (1%) is applied in accordance with paragraph 366 of the CDM Validation and verification standard since the calibration was delayed.</p>
Purpose of data/parameter	Calculation of project emissions
Additional comments	<p>Recording Frequency: Continuously. Data record: Electronic for crediting period + 2 years</p> <p>Due to calibration delay in the measurement equipment F6103B02000, during the period 25/06/2017 - 31/12/2018 the maximum error of the instrument used to measure the data (1%) is applied in accordance with paragraph 366 of the CDM Validation and verification standard since the calibration was delayed.</p>

<b>Data / Parameter</b>	FV <sub>G2,h</sub> :
Unit	Nm <sup>3</sup> /h
Description	Volumetric flow rate of biogas fed into the electric generator engine 2
Measured/ Calculated / Default	Measured
Source of data	Volumetric Meter principle of thermal dispersion with continuous measurement. The measurement location is shown in Figure 5. Measurement Point 6
Value(s) of monitored parameter	<p>Total amount of biogas fed into engine 2 during this Monitoring Period: <b>4,190,829.85 m<sup>3</sup></b></p> <p>See data table – spreadsheets for more information.</p>



Monitoring equipment	<p><b>Equipment 1</b></p> <p>Endres+Hauser Thermal dispersion mass flow meter</p> <p>Series Number E3136B02000</p> <p><u>Calibration Frequency:</u> Every 5 years (According to the suggestion made by the manufacturer)</p> <p><u>Instrument Accuracy:</u> <math>\pm 1\%</math> of reading, <math>\pm 0.5\%</math> of complete scale</p> <p><u>Installation date:</u> 07/07/2011</p> <p><u>Calibration records:</u></p> <p>Calibration certificate 1000136626, issued by Endress + Hauser</p> <p>Dated on 14/04/2011, valid until 13/04/2016</p> <p><b>Equipment 2</b></p> <p>Endres+Hauser Thermal dispersion mass flow meter</p> <p>Series Number D907E302000</p> <p><u>Calibration Frequency:</u> Every 5 years (According to the suggestion made by the manufacturer)</p> <p><u>Instrument Accuracy:</u> <math>\pm 1\%</math> of reading, <math>\pm 0.5\%</math> of complete scale</p> <p><u>Installation date:</u> 21/01/2013</p> <p><u>Calibration records:</u></p> <p>Calibration certificate 1000122896, issued by Endress + Hauser</p> <p>Dated on 18/10/2010, valid until 17/10/2015</p> <p><b>Equipment 3</b></p> <p>Endres+Hauser Thermal dispersion mass flow meter</p> <p>Series Number E3136B02000</p> <p><u>Calibration Frequency:</u> Every 5 years (According to the suggestion made by the manufacturer)</p> <p><u>Instrument Accuracy:</u> <math>\pm 1\%</math> of reading, <math>\pm 0.5\%</math> of complete scale</p> <p><u>Installation date:</u> 03/08/2015</p> <p><u>Calibration records:</u></p> <p>Calibration certificate 1000136626, issued by Endress + Hauser</p> <p>Dated on 14/04/2011, valid until 13/04/2016</p> <p><b>Equipment 4</b></p> <p>Endres+Hauser Thermal dispersion mass flow meter</p> <p>Series Number L10C9702000</p> <p><u>Calibration Frequency:</u> Every 5 years (According to the suggestion made by the manufacturer)</p> <p><u>Instrument Accuracy:</u> <math>\pm 1\%</math> of reading, <math>\pm 0.5\%</math> of complete scale</p> <p><u>Installation date:</u> 08/04/2016</p> <p><u>Calibration records:</u></p> <p>Calibration certificate 3800198669, issued by Endress + Hauser</p> <p>Dated on 25/01/2016, valid until 24/01/2021</p>
----------------------	---

Measuring/ Reading/ Recording frequency	Continuously monitored and hourly accumulated recording
Calculation method (if applicable)	Not applicable
QA/QC procedures	<p><b>Quality Guarantee:</b> given by the equipment manufacturer.</p> <p><b>Calibration:</b> every 5 years, time specified by the manufacturer for this equipment. The instrument is calibrated according to manufacturer's recommendations within five (5) years</p> <p><b>Preventive Maintenance:</b> Routine maintenance will be made to the instrument.</p> <p><b>Meter general technical specifications:</b> Precision: <math>\pm 1\%</math> reading + 0.5% at complete scale standard precision</p>
Purpose of data/parameter	Calculation of project emissions
Additional comments	Recording Frequency: Continuously. Data record: Electronic for crediting period + 2 years

<b>Data / Parameter</b>	$FV_{H,h}$
Unit	$Nm^3/h$
Description	Volumetric flow rate of biogas fed into the water heater
Measured/ Calculated / Default	Measured
Source of data	Volumetric Flow Meter principle of thermal dispersion with continuous measurement. The measurement location is shown in Figure 6. Measurement Point 7
Value(s) of monitored parameter	<p>Total amount of biogas fed into water heater during this Monitoring Period: <b>2,144,284.63 m<sup>3</sup></b></p> <p>See data table – spreadsheets for more information.</p>

Monitoring equipment	<p>Endres+Hauser Thermal dispersion mass flow meter</p> <p>Series Number F2037B02000</p> <p><u>Calibration Frequency:</u> Every 5 years (According to the suggestion made by the manufacturer)</p> <p><u>Instrument Accuracy:</u> <math>\pm 1\%</math> of reading, <math>\pm 0.5\%</math> of complete scale</p> <p><u>Installation date:</u> 18/05/2012</p> <p><u>Calibration records:</u></p> <p>Calibration certificate 1000172915, issued by Endress + Hauser</p> <p>Dated on 07/02/2012, valid until 07/01/2017</p>
Measuring/ Reading/ Recording frequency	Continuously monitored and hourly accumulated recording
Calculation method (if applicable)	Not applicable
QA/QC procedures	<p><b>Quality assurance:</b> Given by the equipment manufacturer. Additionally, the monitoring of the flow meter is automatically computerized and supported by special software. The monitoring data are saved digitally in SCADA (Control and Acquisition Data System)</p> <p><b>Quality control:</b></p> <ul style="list-style-type: none"> <li>-<b>Calibration:</b> The instrument is calibrated regularly in accordance with the manufacturer's recommendations no later than five (5) years.</li> <li>- <b>Maintenance:</b> Routine maintenance of the instrument is performed.</li> <li>- the WWTP-C will undertake the statistical control of each parameter monitored and used for the calculation of the GHG emission reductions of a given CDM project.</li> </ul> <p>Due to calibration delay in the measurement equipment F2037B02000, during the period 07/01/2017 - 31/12/2018 the maximum error of the instrument used to measure the data (1%) is applied in accordance with paragraph 366 of the CDM Validation and verification standard since the calibration was delayed.</p>
Purpose of data/parameter	Calculation of baseline emission and Project emission.
Additional comments	<p>Recording Frequency: Continuously.</p> <p>Data record: Electronic for crediting period + 2 years</p> <p>Due to calibration delay in the measurement equipment F2037B02000, during the period 07/01/2017 - 31/12/2018 the maximum error of the instrument used to measure the data (1%) is applied in accordance with paragraph 366 of the CDM Validation and verification standard since the calibration was delayed.</p>

Data / Parameter	$f_{VCH_4, Hh}$
Unit	$\mu V/V$
Description	Volumetric fraction of methane in biogas combusted in water heater
Measured/ Calculated / Default	Measured
Source of data	Continuous measuring meter with infrared. The measurement location is shown in Figure 5. Measurement Point 8
Value(s) of monitored parameter	Average value for this Monitoring Period: <b>64.41%</b> See data table – spreadsheets for more information.

Monitoring equipment	<p><b>Equipment 2</b></p> <p>RKI Infrared Beacon B110 methane concentration meter</p> <p>Serial Number: B110-128015</p> <p><u>Calibration frequency:</u> as suggested by the manufacturer (every year).</p> <p><u>Precision Range:</u> <math>\pm 5\%</math> reading, <math>\pm 2\%</math> at complete scale.</p> <p><u>Calibration records:</u>  Cal. Certificate 72-2110RK-02, Issued by RKI Instruments  Dated on 17/08/2012, valid until 16/08/2013</p> <p>Cal. Certificate HX-CC-MG-2588, Issued by HIGIELECTRONIX LTDA  Dated on 13/11/2014, valid until 12/11/2015</p> <p><b>Equipment 3</b></p> <p>RKI Infrared Beacon B110 methane concentration meter</p> <p>Serial Number: C-7743-S-7719</p> <p><u>Calibration frequency:</u> as suggested by the manufacturer (every year).</p> <p><u>Precision Range:</u> <math>\pm 5\%</math> reading, <math>\pm 2\%</math> at complete scale.</p> <p><u>Date of installation:</u> 21/01/2013</p> <p><u>Calibration records:</u>  Cal. Certificate HX-CC-MG-2588, Issued by RKI Instruments  Dated on 13/11/2014, valid until 14/11/2015</p> <p><b>Equipment 4</b></p> <p>RKI Infrared M2A methane concentration meter</p> <p>Serial Number: M2A5Z3589</p> <p><u>Calibration frequency:</u> as suggested by the manufacturer (every year).</p> <p><u>Precision Range:</u> <math>\pm 5\%</math> reading, <math>\pm 2\%</math> at complete scale.</p> <p><u>Date of installation:</u> 21/01/2016</p>
----------------------	---

	<p><u>Calibration records:</u></p> <table border="1" data-bbox="480 219 1439 595"> <thead> <tr> <th>Date of calibration</th><th>Certificate's code</th><th>Company Certificate</th><th>Next due calibration</th></tr> </thead> <tbody> <tr> <td>Calibration 1: 20/01/2016</td><td>HX-CC-MG-4280</td><td>HIGIELECTRONIX LTDA</td><td>21/01/2017</td></tr> <tr> <td>Calibration 2: 21/10/2016</td><td>HX-CC-MG-4280</td><td>HIGIELECTRONIX LTDA</td><td>22/10/2017</td></tr> <tr> <td>Calibration 3: 14/02/2018</td><td>HX-CC-MG-4280</td><td>HIGIELECTRONIX LTDA</td><td>28/02/2019</td></tr> </tbody> </table> <p>The data are captured from the sensor and recorded in the transmitter and SCADA System and the Data Table.</p>	Date of calibration	Certificate's code	Company Certificate	Next due calibration	Calibration 1: 20/01/2016	HX-CC-MG-4280	HIGIELECTRONIX LTDA	21/01/2017	Calibration 2: 21/10/2016	HX-CC-MG-4280	HIGIELECTRONIX LTDA	22/10/2017	Calibration 3: 14/02/2018	HX-CC-MG-4280	HIGIELECTRONIX LTDA	28/02/2019
Date of calibration	Certificate's code	Company Certificate	Next due calibration														
Calibration 1: 20/01/2016	HX-CC-MG-4280	HIGIELECTRONIX LTDA	21/01/2017														
Calibration 2: 21/10/2016	HX-CC-MG-4280	HIGIELECTRONIX LTDA	22/10/2017														
Calibration 3: 14/02/2018	HX-CC-MG-4280	HIGIELECTRONIX LTDA	28/02/2019														
Measuring/ Reading/ Recording frequency	Continuously monitored and hourly accumulated recording																
Calculation method (if applicable)	Not applicable																
QA/QC procedures	<p><b>Quality assurance:</b> Given by the equipment manufacturer. Additionally, the monitoring of the flow meter is automatically computerized and supported by special software. The monitoring data are saved digitally in SCADA (Control and Acquisition Data System)</p> <p><b>Quality control:</b></p> <p><b>-Calibration:</b> The instrument is calibrated regularly in accordance with the manufacturer's recommendations within one (1) year.</p> <p><b>- Maintenance:</b> Routine maintenance of the instrument is performed.</p> <p>- the WWTP-C will undertake the statistical control of each parameter monitored and used for the calculation of the GHG emission reductions of a given CDM project.</p> <p>Due to calibration delay in the measurement equipment C-7743-S-7719, during the period 14/11/2015 - 19/01/2016 the maximum error of the instrument used to measure the data (5%) is applied in accordance with paragraph 366 of the CDM Validation and verification standard since the calibration was delayed.</p> <p>Due to calibration delay in the measurement equipment M2A5Z3589, during the period 22/10/2017 - 13/02/2018 the maximum error of the instrument used to measure the data (5%) is applied in accordance with paragraph 366 of the CDM Validation and verification standard since the calibration was delayed.</p>																
Purpose of data/parameter	Calculation of project emissions																

Additional comments	<p>Recording Frequency: Continuously.</p> <p>Data record: Electronic for crediting period + 2 years</p> <p>The measured data are penalized from 14/11/2015 - 19/01/2016 with the maximum error of the instrument, 5%.</p> <p>The measured data are penalized from 22/10/2017 - 13/02/2018 with the maximum error of the instrument, 5%.</p>
---------------------	---

<b>Data / Parameter</b>	$f_{VCH_4, G h}$
Unit	$\mu V/V$
Description	Volumetric fraction of methane in biogas combusted into the electric generator engine
Measured/ Calculated / Default	Measured
Source of data	Continuous measuring meter with infrared. The measurement location is shown in Figure 5. Measurement Point 9
Value(s) of monitored parameter	<p>Average value for this Monitoring Period: <b>64.16%</b></p> <p>See data table – spreadsheets for more information.</p>

Monitoring equipment	<b>Equipment 2</b>																			
	ATI Infrared D12-IR-3-1-1 methane concentration meter																			
	Serial Number XIHLX / S 6486																			
	<u>Calibration frequency:</u> Annual (as suggested by the manufacturer).																			
	<u>Precision Range:</u> $\pm 5\%$ read $\pm 2\%$ full scale																			
	<u>Calibration records:</u>																			
	<table border="1"> <thead> <tr> <th>Date of calibration</th> <th>Certificate's code</th> <th>Company Certificate</th> <th>Next due calibration</th> </tr> </thead> <tbody> <tr> <td>Calibration 2: 23/04/2015</td> <td>14-028</td> <td>PROGEN</td> <td>24/04/2016</td> </tr> <tr> <td>Calibration 3: 20/04/2016</td> <td>14-077</td> <td>PROGEN</td> <td>21/04/2017</td> </tr> <tr> <td>Calibration 4: 20/04/2017</td> <td>N.A</td> <td>PROGEN</td> <td>21/04/2018</td> </tr> </tbody> </table>				Date of calibration	Certificate's code	Company Certificate	Next due calibration	Calibration 2: 23/04/2015	14-028	PROGEN	24/04/2016	Calibration 3: 20/04/2016	14-077	PROGEN	21/04/2017	Calibration 4: 20/04/2017	N.A	PROGEN	21/04/2018
	Date of calibration	Certificate's code	Company Certificate	Next due calibration																
	Calibration 2: 23/04/2015	14-028	PROGEN	24/04/2016																
	Calibration 3: 20/04/2016	14-077	PROGEN	21/04/2017																
Calibration 4: 20/04/2017	N.A	PROGEN	21/04/2018																	
<b>Equipment 3</b>																				
RKI Infrared Beacon B110 methane concentration meter																				
Serial Number M2A49903																				
<u>Calibration frequency:</u> Annual (as suggested by the manufacturer).																				
<u>Precision Range:</u> $\pm 5\%$ read $\pm 2\%$ full scale																				
<u>Date of installation:</u> 25/11/2014																				
<u>Calibration records:</u>																				
<ul style="list-style-type: none"> <li>Calibration certificate HX-CC-MG-2471 issued by HIGIELECTRONIX LTDA Dated on 13/11/2014, valid until 12/11/2015</li> </ul>																				



	<p><b>Equipment 4</b></p> <p>ATI Infrared D12-IR-3-1-1 methane concentration meter Serial Number C10-IR-501</p> <p><u>Calibration frequency:</u> Annual (as suggested by the manufacturer).</p> <p><u>Precision Range:</u> <math>\pm 5\%</math> read <math>\pm 2\%</math> full scale</p> <p><u>Date of installation:</u> 29/04/2015</p> <p><u>Calibration records:</u></p> <ul style="list-style-type: none"> <li>• Calibration certificate 14-028 issued by PROGEN Dated on 23/04/2015, valid until 24/04/2016</li> <li>• Calibration certificate 14-077 issued by PROGEN Dated on 20/04/2016, valid until 21/04/2017</li> </ul>
Measuring/ Reading/ Recording frequency	Continuously monitored and hourly average recorded
Calculation method (if applicable)	Not applicable
QA/QC procedures	<p><b>Quality assurance:</b> Given by the equipment manufacturer. Additionally, the monitoring of the flow meter is automatically computerized and supported by special software. The monitoring data are saved digitally in SCADA (Control and Acquisition Data System)</p> <p><b>Quality control:</b></p> <p><b>-Calibration:</b> The instrument is calibrated regularly in accordance with the manufacturer's recommendations.</p> <p><b>- Maintenance:</b> Routine maintenance of the instrument is performed.</p> <p>- The WWTP-C will undertake the statistical control of each parameter monitored and used for the calculation of the GHG emission reductions of a given CDM project</p> <p>Due to calibration delay in the measurement equipment XIHLX / S 6486, during the period 21/04/2018 - 31/12/2018 the maximum error of the instrument used to measure the data (5%) is applied in accordance with paragraph 366 of the CDM Validation and verification standard since the calibration was delayed.</p>
Purpose of data/parameter	Calculation of project emissions
Additional comments	<p>Recording Frequency: Continuously.</p> <p>Data record: Electronic for crediting period + 2 years</p> <p>The measured data are penalized from 21/04/2018 - 31/12/2018 with the maximum error of the instrument, 5%.</p>

Data / Parameter	$\eta_{\text{flare}}$
Unit	%
Description	Flare Efficiency
Measured/ Calculated / Default	Continuously calculated
Source of data	Continuously calculated from the temperature of the flares
Value(s) of monitored parameter	Average value for this Monitoring Period: <b>90%</b> See data table – spreadsheets for more information.
Monitoring equipment	Not applicable
Measuring/ Reading/ Recording frequency	Continuously monitored and hourly recording
Calculation method (if applicable)	<p>One of the two following options shall be used to determine the efficiency of the flaring process in an enclosed flare:</p> <p>(a) To adopt a 90% default value, or</p> <p>(b) To perform a continuous monitoring of the efficiency.</p> <p>According to the methodological “Tool to determine project emissions from flaring gases”.</p> <p>containing methane”, in case of enclosed flares and use of the default value for the flare efficiency (90%), the flare efficiency in the hour h (<math>\eta_{\text{flare,h}}</math>) is:</p> <ul style="list-style-type: none"> <li>• 0% if the temperature in the exhaust gas of the flare (<math>T_{\text{flare}}</math>) is below 500°C for more than 20 minutes during the hour h</li> <li>• 50% if the temperature in the exhaust gas of the flare (<math>T_{\text{flare}}</math>) is above 500°C for more than 40 minutes during the hour h, but the manufacturer’s specifications on proper operation of the flare are not met at any point in the time during the hour h</li> <li>• 90% if the temperature in the exhaust gas of the flare (<math>T_{\text{flare}}</math>) is above 500°C for more than 40 minutes during the hour h and the manufacturer’s specifications on proper operation of the flare are met continuously during the hour h.</li> </ul>
QA/QC procedures	Not applicable
Purpose of data/parameter	Calculation of baseline emission and Project emission.
Additional comments	<p>Recording Frequency: hourly.</p> <p>Data record: Electronic for crediting period + 2 years</p>

Data/Parameter	ECy
Data unit	MWh
Description	Grid electricity consumption in year “y”
Source of data	Monitoring consists of metering the number of hours of operating of the equipment that consumes electricity: flare 1, flare 2 and water heater.
Value(s) applied	Total quantity of electricity consumed by the project activity during this monitoring period: <b>80 MWh</b>
Measurement methods and procedures	<p>The method to determine the operation of the operational hours of the flare 1 and flare 2 that consumes electricity would be:</p> <ul style="list-style-type: none"> <li>Op<sub>flare1 and 2</sub>=0 when temperature in the exhaust gas of the flares required to determine the combustion efficiency in flare 1 and 2 is below 500°C.</li> <li>Op<sub>flare1 and 2</sub>=1 when temperature in the exhaust gas of the flares required to determine the combustion efficiency in flare 1 and 2 is higher than 500°C</li> </ul> <p>The method to determine the operation of the operational hours of the water heater that consumes electricity would be:</p> <ul style="list-style-type: none"> <li>Op<sub>water heater</sub>=0 when the volumetric flow of biogas fed into the water heater is zero.</li> <li>Op<sub>water heater</sub>=1 when the volumetric flow of biogas fed into the water heater is above zero.</li> </ul> <p>Once determined the operational hours of the equipment, the nameplate capacity of the equipment is multiplied by the operational hours to determine the electricity consumption.</p>
Monitoring frequency	Continuously monitored and hourly recording
QA/QC procedures	Not applicable
Purpose of data	Calculation of project emissions from electricity consumption in the year y (t CO <sub>2</sub> e)
Additional comment	In order to be conservative it will be considered that the flares and the water heater will be operating using 100% electricity from the national grid. This approach is conservative since the internal electricity is produced with biogas, thus, emission factor of zero.

Data/Parameter	EF
Data unit	tCO <sub>2</sub> /MWh
Description	Grid emission factor
Source of data	Grid emission factor of the National interconnected System calculated in accordance with AMS.I.D or using data published by UPME (Energy and Mining Unit of Colombia) for the relevant year.
Value(s) applied	Year 2015: <b>0.00022 tCO<sub>2</sub>/MWh</b> Year 2016: <b>0.00020 tCO<sub>2</sub>/MWh</b> Year 2017: <b>0.00009 tCO<sub>2</sub>/MWh</b> Year 2018: <b>0.00009 tCO<sub>2</sub>/MWh</b> Year 2019: <b>0.00009 tCO<sub>2</sub>/MWh</b>
Measurement methods and procedures	Calculated as the weighted average in accordance with the applied methodology AMS-I.D
Monitoring frequency	The value will be calculated for the year in which the electricity consumption occurs.
QA/QC procedures	Not applicable
Purpose of data	Calculation of project emissions in case that electricity consumption is produced in the plant.

Additional comment	<p>Data record: Electronic for crediting period + 2 years</p> <p>The raw data for the electricity generation mix in Colombia used for the EF calculation for the year 2018 and 2019 corresponds to the generation data for the year 2017, as still there is not electricity generation raw data available for the year 2018 and 2019 in the public data base of the UNEP ("Unidad de Planeación Minero-Energética"; <a href="http://informacioninteligente10.xm.com.co/oferta/Paginas/HistoricoOferta.aspx?RootFolder=%2Foferta%2FHistorico">http://informacioninteligente10.xm.com.co/oferta/Paginas/HistoricoOferta.aspx?RootFolder=%2Foferta%2FHistorico</a>)</p>
--------------------	--

### D.3. Implementation of sampling plan

Not applicable

## SECTION E. Calculation of emission reductions or net anthropogenic removals

### E.1. Calculation of baseline emissions or baseline net removals

In accordance with the approved monitoring methodology AMS III.H Methane recovery in wastewater treatment (Version 09, Scope 13, Mar 28, 2008), and approved PDD baseline emissions consist of:

$$BE_h = MEP_{h,s,treatment} * GWP_{CH4}$$

Where:

$MEP_{h,s,treatment}$ : Methane emission potential of the sludge treatment system in hour "h"

On PDD the theoretical method employed to **estimated** the future production methane was:

$$MEP_{h,s,treatment} = S_{h,untreated} * DOC_{h,s,untreated} * DOC_F * F * 16/12 * MCF_{s,treatment}$$

However for the **real** calculation during MP, the parameter  $MEP_{h,s,treatment}$  is calculated according to the following formula based on monitoring parameters:

$$MEP_{h,s,treatment} = (FV_{RG,h} * fv_{CH4,FG,h} + FV_{H,h} * fv_{CH4,H,h} + (FV_{G1,h} + FV_{G2,h}) * fv_{CH4,G,h}) * D_{CH4}$$

Therefore, the final formula for the MR is:

$$BE_h = (FV_{RG,h} * fv_{CH4,FG,h} + FV_{H,h} * fv_{CH4,H,h} + (FV_{G1,h} + FV_{G2,h}) * fv_{CH4,G,h}) * D_{CH4} * GWP_{CH4}$$

$fv_{CH4,FG,h}$ : Average volumetric fraction of methane in biogas ( $\mu V/V$ ) combusted in flares ( $\mu V/V$ )  
Volumetric biogas flow rate carried for combustion in the flare ( $m^3/h$ )

$FV_{RG,h}$ : Volumetric biogas flow rate carried for combustion in the flare ( $m^3/h$ )

$T_{flare}$ : Temperature in the exhaust gas of the flares ( $K/^\circ C$ )

$FV_{G,h}$ : Volumetric biogas flow rate carried to the engines of the electric generators ( $m^3/h$ )

$FV_{H,h}$	Volumetric biogas flow rate carried for combustion in water heater (m <sup>3</sup> /h)
$fv_{CH_4,H,h}$	Average volumetric fraction of methane in biogas combusted in water heater ( $\mu V/V$ ).
$fv_{CH_4,G,h}$	Average volumetric fraction of methane in biogas fed into the engines of the electric generators ( $\mu V/V$ )
$D_{CH_4}$	Methane Density (kg/Nm <sup>3</sup> )
$GWP_{CH_4}$	Methane Global Warming Potential

For example, in 23/02/2015 at 19:00 PM, in the baseline the data reported is the following:

(1) Volumetric fraction of methane in biogas fed into flares $fv_{CH_4,FG,h}$	$\mu V/V$	64.33
(2) Volumetric flow rate of biogas fed into flares $FV_{RG,h}$	m <sup>3</sup> /h	0.00
(7) Volumetric flow rate of biogas fed into the water heater $FV_{H,h}$	m <sup>3</sup> /h	258.77
(11) Volumetric fraction of methane in biogas combusted in water heater $fv_{CH_4,H,h}$	$\mu V/V$	64.20
(12) Volumetric fraction of methane in biogas fed into the electric generator engine $fv_{CH_4,G,h}$	$\mu V/V$	64.79
(5) Volumetric flow rate of biogas fed into the electric generator engine 1 $FV_{G1,h}$	m <sup>3</sup> /h	0.00
(6) Volumetric flow rate of biogas fed into the electric generator engine 2 $FV_{G2,h}$	m <sup>3</sup> /h	0.00
Baseline Emissions (BE)	tCO <sub>2</sub> e	2,977

The flow meter used in the project measure instantaneous flow in m<sup>3</sup>/h. The SCADA (Data Control and Acquisition System) of the WWTP-C records the data every 30 seconds and calculates the flow passed in those 30 seconds and accumulates it at the time. That is, the SCADA performs the hour calculation (the total volume of biogas that circulates during every complete hour, in m<sup>3</sup>), which is the data used in the ER Calculation spreadsheet to calculate the emissions reductions.

The actual baseline emissions for the reporting period is **173,079 tCO<sub>2</sub>**.

## E.2. Calculation of project emissions or actual net removals

In accordance with the approved monitoring methodology AMS III.H Methane recovery in wastewater treatment (Version 09, Scope 13, March 28, 2008), project activity emissions consist of:

$$PE_h = PE_{h,power} + PE_{h,ww,treated} + PE_{h,s,final} + PE_{h,fugitive} + PE_{h,dissolved} + PE_{h,upgrading} + PE_{h,leakage,pipeline}$$

Where:

$PE_h$	Project activity emissions in the hour “h” (tCO <sub>2</sub> e)
$PE_{h,power}$	Emissions from electricity from the grid in the hour “h”
$PE_{h,ww,treated}$	Emissions from degradable organic carbon in treated wastewater in the hour “h”
$PE_{h,s,final}$	Emissions from anaerobic decay of the final sludge produced in the hour “h”
$PE_{h,fugitive}$	Emissions from methane release in capture and utilization/combustion/flare systems in the hour “h”
$PE_{h,dissolved}$	Emissions from dissolved methane in treated wastewater in the hour “h”
$PE_{h,upgrading}$	Emission related to the upgrading and compression of biogas in the hour “h”
$PE_{h,leakage,pipeline}$	Emission due to the physical leakage from the dedicated piped network in the hour “h”

Relevant to the proposed project activity is the following formula:

$$PE_h = PE_{h,power} + PE_{h,fugitive}$$

The reasons for leaving out other formula components are:

$PE_{h,ww,treated}$	Introduction of a recovery and combustion to an existing sludge treatment system does not change the amount of methane produced per unit of COD removed. Having the aforementioned in mind, the content of degradable organic carbon in treated wastewater is expected to be the same in the baseline as in the project activity and therefore, this term is not relevant for further calculations.
$PE_{h,s,final}$	Introduction of a recovery and combustion to an existing sludge treatment system does not change the amount of methane produced per unit of COD removed. Having the aforementioned in mind, the amount and characteristics of the sludge produced in the baseline scenario will not change in the proposed project activity and therefore, this term is not relevant for further calculations.
$PE_{h,dissolved}$	Introduction of a recovery and combustion to an existing sludge treatment system does not change the amount of methane produced per unit of COD removed. Having the aforementioned in mind, the amount and characteristics of methane dissolved in treated wastewater in the baseline scenario will not change in the proposed project activity and therefore, this term is not relevant for further calculations.
$PE_{h,upgrading}$	The recovered methane is not upgraded for bottling, therefore, this term is neglected.

$PE_{h,leakage,pipeline}$  There are no emission due to the physical leakage from the dedicated piped network for transport of upgraded biogas to the end users in the proposed project activity, therefore, this term is not relevant for further calculations

$$PE_{h,fugitive} = PE_{y,fugitive,ww} + PE_{y,fugitive,s}$$

Where:

$PE_{h,fugitive,ww}$  Fugitive emissions through capture and utilization/combustion/flare inefficiencies in the anaerobic wastewater treatment in year “y” (tCO<sub>2</sub>e)

$PE_{h,fugitive,s}$  Fugitive emissions through capture and utilization/combustion/flare inefficiencies in the anaerobic sludge treatment in year “y” (tCO<sub>2</sub>e).

As the recovery and combustion will be introduced only to an existing anaerobic sludge treatment system, the emissions will be associated only to the fugitive emissions from the capture and utilization/combustion/flare inefficiencies in this system. There will be no change in the anaerobic wastewater treatment between the baseline and the proposed project activity, therefore,  $PE_{y,fugitive,ww} = 0$ .

The project emissions could be produced only due to the capture and combustion efficiency of the methane recovery system in the sludge treatment.

Nevertheless, this project emissions ( $PE_{fugitive,y}$ ) should be taken into consideration in case that the project activity implies any change in the sludge treatment, which it will not the case. The amount of untreated sludge generated ( $S_{y,untreated}$ ) will be the same than in the baseline scenario, therefore, the potential to generate methane are equal in the baseline and the proposed project activity. For this reason,  $MEP_{y,s,treatment}$  is considered zero in the ex post calculations, and therefore,  $PE_{y,fugitive,s}$  is also zero

Therefore, the project emissions in this monitoring period will be due to only the electricity consumption for the project purposes:

$$PE_h = PE_{h,power}$$

$PE_{h,power}$  Emissions from the electricity consumption for the project purposes (electricity consumption for the operation of the flares and water heaters<sup>3</sup>) in the hour “h”

$$PE_{h,power} = EC_h * FE_h$$

$EC_h$  Grid electricity consumption for the operation of the flares in the hour “h”

$FE_h$  Emission factor for grid electricity in the hour “h”

Grid electricity consumption for the operation of the flares in year “y” will be determined by the measurement of the operation hours of the flares multiplied by the nameplate (installed capacity) of the flare 3.3 kW per each (2.2 kW - gas booster + 1.1 kW – ventilator, according to the technical specification of the equipment). The operational time of the flares will be registered in SCADA, Control and Acquisition Data System for 10+2 years beginning from the start of the project operation – see above the description of the system. Grid electricity consumption for the operation of the water heater in year “y” will be determined by the measurement of the operation hours of the water heater multiplied by the nameplate (installed capacity) of the water heater 10.0 kW (2.5 kW - gas booster + 7.5 kW – ventilator, according to the technical specification of the equipment). The operational time of the water heater will be registered in SCADA, Control and Acquisition Data

<sup>3</sup> During this monitoring period the water heaters were not operating using electricity from the grid

System for 10+2 years beginning from the start of the project operation – see above the description of the system.

For example, in 23/02/2015 at 19:00 PM, in the Fugitive emission the data reported is the following:

(1) Volumetric fraction of methane in biogas fed into flares $fv_{CH_4,FG,h}$	$\mu V/V$	64.33
(2) Volumetric flow rate of biogas fed into flares $FV_{RG,h}$	$m^3/h$	0
(3) Temperature in the exhaust gas of the flares to determine combustion efficiency in flare 1 – $T_{flare1}$	$^{\circ}C$	29.72
(4) Temperature in the exhaust gas of the flare required to determine the combustion efficiency in flare 2 – $T_{flare2}$	$^{\circ}C$	29.45
Flare Efficiency	%	0%
Potential Methane emission burned in the flares $MEP_{h,ww,bl}$	$tonCH_4/h$	0.11908

And for Power emission:

Runtime of flares (Flare1 + Flare2)	h	0 / 0
Runtime of heater	h	1
Electricity consumption	KWh	0.01000
Emission Factor	$tonCO_2/MWh$	0.00022
$PE_{h,power}$	$tonCO_2e$	0

Finally, the Project emission is:

$PE_{h,power}$	$tCO_2e$	0.000
Project Emissions (PE)	$tCO_2e$	0.000

Emission factor for the grid electricity is calculated in accordance with the methodology AMS-I.D version 13.0. Option b of the methodology is used, and the grid emission calculation is made as the weighted average emissions (in  $t CO_2/MWh$ ) of the current generation mix. The data of the year in which project generation occurs must be used.



In accordance with that calculations, the grid emission factor for the second monitoring period:

	FUEL	kWh	EF (tCO <sub>2</sub> /MWh)	tCO <sub>2</sub>
TERM	COAL	6,244,982,941	0.9512	5,940,389
	GAS	13,448,743,295	0.5737	7,714,996
	QUEROSENE	44,720,532	0.2588	11,575
	COMBUSTOLEO	490,707,472	0.2614	128,251
	ACPM	1,042,852,750	0.9512	991,988
COGENERATION	BAGASSE	513,852,624	0	0
	GAS	1,785,985	0.5737	1,025
HYDRO	WATER	44,681,902,367	0	0
WIND	WIND	68,377,448	0	0
<b>TOTAL</b>		<b>66,537,925,414</b>		<b>14,788,225</b>
GRID EMISSION FACTOR 2015 (tCO <sub>2</sub> /MWh)			0.00022	

	FUEL	kWh	EF (tCO <sub>2</sub> /MWh)	tCO <sub>2</sub>
TERM	COAL	5,393,380,106	0.9512	5,130,323
	GAS	11,003,535,350	0.5737	6,312,280
	QUEROSENE	173,819,948	0.2588	44,992
	COMBUSTOLEO	533,874,004	0.2614	139,533
	ACPM	1,348,400,125	0.9512	1,282,633
COGENERATION	BAGASSE	591,803,935	0	0
	GAS	1,451,752	0.5737	833
HYDRO	WATER	46,798,553,402	0	0
WIND	WIND	50,887,341	0	0
<b>TOTAL</b>		<b>65,895,705,965</b>		<b>12,910,593</b>
GRID EMISSION FACTOR 2016 (tCO <sub>2</sub> /MWh)			0.00020	

	FUEL	kWh	EF (tCO <sub>2</sub> /MWh)	tCO <sub>2</sub>
TERM	COAL	2,391,628,215	0.9512	2,274,979
	GAS	6,192,597,000	0.5737	3,552,441
	QUEROSENE	0	0.2588	0
	COMBUSTOLEO	50,362,981	0.2614	13,163
	ACPM	12,059,178	0.9512	11,471
COGENERATION	BAGASSE	625,099,436	0	0
	GAS	2,105,494	0.5737	1,208
HYDRO	WATER	57,342,980,322	0	0
WIND	WIND	3,071,419	0	0
<b>TOTAL</b>		<b>66,619,904,046</b>		<b>5,853,261</b>
GRID EMISSION FACTOR 2017 (tCO <sub>2</sub> /MWh)			0.00009	

	FUEL	kWh	EF (tCO <sub>2</sub> /MWh)	tCO <sub>2</sub>
TERM	COAL	2,391,628,215	0.9512	2,274,979
	GAS	6,192,597,000	0.5737	3,552,441
	QUEROSENE	0	0.2588	0
	COMBUSTOLEO	50,362,981	0.2614	13,163
	ACPM	12,059,178	0.9512	11,471
COGENERATION	BAGASSE	625,099,436	0	0
	GAS	2,105,494	0.5737	1,208
HYDRO	WATER	57,342,980,322	0	0
WIND	WIND	3,071,419	0	0
<b>TOTAL</b>		<b>66,619,904,046</b>		<b>5,853,261</b>
GRID EMISSION FACTOR 2018 (tCO <sub>2</sub> /MWh)			0.00009 <sup>4</sup>	

	FUEL	kWh	EF (tCO <sub>2</sub> /MWh)	tCO <sub>2</sub>
TERM	COAL	2,391,628,215	0.9512	2,274,979
	GAS	6,192,597,000	0.5737	3,552,441
	QUEROSENE	0	0.2588	0
	COMBUSTOLEO	50,362,981	0.2614	13,163
	ACPM	12,059,178	0.9512	11,471
COGENERATION	BAGASSE	625,099,436	0	0
	GAS	2,105,494	0.5737	1,208
HYDRO	WATER	57,342,980,322	0	0
WIND	WIND	3,071,419	0	0
<b>TOTAL</b>		<b>66,619,904,046</b>		<b>5,853,261</b>
GRID EMISSION FACTOR 2019 (tCO <sub>2</sub> /MWh)			0.00009 <sup>5</sup>	

### E.3. Calculation of leakage emissions

Given that technology used does not imply equipment transferred from another activity, and existing equipment is not transferred to another activity, no leakage must be considered in accordance with applied methodology.

<sup>4</sup> The raw data for the electricity generation mix in Colombia used for the EF calculation for the year 2018 corresponds to the generation data for the year 2017, as still there is not electricity generation raw data available for the year 2018 in the public data base of the UNEP ("Unidad de Planeación Minero-Energética"; <http://informacioninteligente10.xm.com.co/oferta/Paginas/HistoricoOferta.aspx?RootFolder=%2Foferta%2FHistorico>)

<sup>5</sup> The raw data for the electricity generation mix in Colombia used for the EF calculation for the year 2019 corresponds to the generation data for the year 2017, as still there is not electricity generation raw data available for the year 2019 in the public data base of the UNEP ("Unidad de Planeación Minero-Energética"; <http://informacioninteligente10.xm.com.co/oferta/Paginas/HistoricoOferta.aspx?RootFolder=%2Foferta%2FHistorico>)

**E.4. Calculation of emission reductions or net anthropogenic removals**

	Baseline GHG emissions or baseline net GHG removals (t CO <sub>2</sub> e)	Project GHG emissions or actual net GHG removals (t CO <sub>2</sub> e)	Leakage GHG emissions (t CO <sub>2</sub> e)	GHG emission reductions or net anthropogenic GHG removals (t CO <sub>2</sub> e)		
				Before 01/01/2013	From 01/01/2013	Total amount
	173,079	1	-	-	173,078	173,078

**E.5. Comparison of emission reductions or net anthropogenic removals achieved with estimates in the registered PDD**

Amount achieved during this monitoring period (t CO <sub>2</sub> e)	Amount estimated ex ante for this monitoring period in the PDD (t CO <sub>2</sub> e)
173,078	248,361

The monitoring period from 01/01/2015 to 31/12/2019 (1,825 days) is *ex-ante* calculated in accordance with the registered PDD.

Total number of days of the 3<sup>rd</sup> monitoring period:

365 days (01/01/2015 – 31/12/2015) + 365 days (01/01/2016-31/12/2016) + 365 days from (01/01/2017 - 31/12/2017) + 365 days from (01/01/2018 -31/12/2018) + 365 days from (01/01/2019 -31/12/2019) = 1,825 days

**E.5.1. Explanation of calculation of “amount estimated ex ante for this monitoring period in the PDD”**

Below is the table used for the calculation of the amount estimated ex ante for this monitoring period in the PDD. These calculations can be found in the Excel spreadsheet used for the ERs calculations (“(200511) ER Calc\_2341\_01-01-2015\_31-12-2019”).

Item		Actual values achieved during this monitoring period	Values estimated in ex-ante calculation of registered PDD
Year 2015	From	01/01/2015	01/01/2015
	To	31/12/2015	31/12/2015
	Days	365	365
	Emission reductions or GHG removals by sinks (t CO <sub>2</sub> e)	31.104	59.272
	<b>tCO<sub>2</sub>e/day</b>	<b>85,23</b>	<b>162,39</b>
Year 2016	From	01/01/2016	01/01/2016
	To	31/12/2016	31/12/2016
	Days	365	365
	Emission reductions or GHG removals by sinks (t CO <sub>2</sub> e)	30.005	59.535
	<b>tCO<sub>2</sub>e/day</b>	<b>82,21</b>	<b>163,11</b>
Year 2017	From	01/01/2017	01/01/2017
	To	31/12/2017	31/12/2017
	Days	365	365
	Emission reductions or GHG removals by sinks (t CO <sub>2</sub> e)	36.934	59.684
	<b>tCO<sub>2</sub>e/day</b>	<b>101,20</b>	<b>163,52</b>
Year 2018	From	01/01/2018	01/01/2018
	To	31/12/2018	31/12/2018
	Days	365	365
	Emission reductions or GHG removals by sinks (t CO <sub>2</sub> e)	36.924	34.949
	<b>tCO<sub>2</sub>e/day</b>	<b>101,17</b>	<b>95,75</b>
Year 2019	From	01/01/2019	01/01/2019
	To	31/12/2019	31/12/2019
	Days	365	365
	Emission reductions or GHG removals by sinks (t CO <sub>2</sub> e)	38.110	34.949
	<b>tCO<sub>2</sub>e/day</b>	<b>104,42</b>	<b>95,75</b>

#### E.6. Remarks on increase in achieved emission reductions

The amount of ERs estimated ex ante as per PDD was 248,361 t CO<sub>2</sub>e, compared with the 173,078 t CO<sub>2</sub>e obtained during this monitoring period. Therefore, there is an issuance success of 70% compared with the PDD values.

**E.7. Remarks on increase in achieved emission reductions**

As per the applied methodology “*Methane recovery in wastewater treatment. Version 9.0*”, measures are limited to those that result in aggregate emission reductions of less than or equal to 60 kt CO<sub>2</sub> equivalent annually from all type III components of the project activity.

As can be seen in section E.5.1, the actual net Emission Reductions achieved annually during this first Monitoring Period (and the annual ERs estimated ex-ante as per PDD for this Monitoring Period) are in all the cases below the maximum limit indicated by the methodology:

<b>ERs estimated ex-ante for the year 2015</b>	59,272 tCO <sub>2</sub> eq
<b>Actual net ERs achieved during 2015</b>	31,104 tCO <sub>2</sub> eq
<b>ERs estimated ex-ante for the year 2016</b>	59,535 tCO <sub>2</sub> eq
<b>Actual net ERs achieved during 2016</b>	30,005 tCO <sub>2</sub> eq
<b>ERs estimated ex-ante for the year 2017</b>	59,684 tCO <sub>2</sub> eq
<b>Actual net ERs achieved during 2017</b>	36,934 tCO <sub>2</sub> eq
<b>ERs estimated ex-ante for the period 01/01/2018 – 01/08/2018</b>	34,949 tCO <sub>2</sub> eq
<b>Actual net ERs achieved during 2018</b>	36,924 tCO <sub>2</sub> eq
<b>ERs estimated ex-ante for the period 2019</b>	34,949 tCO <sub>2</sub> eq
<b>Actual net ERs achieved during the period 2019</b>	38,110 tCO <sub>2</sub> eq

This demonstrates that the combined scale of the activities belonging to the same small-scale project type (Type III) remains under the limit of that type every year during the first monitoring period, and no cap of the GHG emission reductions is needed.

- - - - -

**Document information**

<i>Version</i>	<i>Date</i>	<i>Description</i>
07.0	31 May 2019	Revision to: <ul style="list-style-type: none"> <li>• Ensure consistency with version 02.0 of the “CDM project standard for project activities” (CDM-EB93-A04-STAN);</li> <li>• Add a section on remarks on the observance of the scale limit of small-scale project activity during the crediting period;</li> <li>• Add "changes specific to afforestation or reforestation project activity" as a possible post-registration changes;</li> <li>• Clarify the reporting of net anthropogenic GHG removals for A/R project activities between two commitment periods;</li> <li>• Make editorial improvements.</li> </ul>

<i>Version</i>	<i>Date</i>	<i>Description</i>
06.0	7 June 2017	Revision to: <ul style="list-style-type: none"> <li>• Ensure consistency with version 01.0 of the “CDM project standard for project activities” (CDM-EB93-A04-STAN);</li> <li>• Make editorial improvements.</li> </ul>
05.1	4 May 2015	Editorial revision to correct version numbering.
05.0	1 April 2015	Revisions to: <ul style="list-style-type: none"> <li>• Include provisions related to delayed submission of a monitoring plan;</li> <li>• Provisions related to the Host Party;</li> <li>• Remove reference to programme of activities;</li> <li>• Overall editorial improvement.</li> </ul>
04.0	25 June 2014	Revisions to: <ul style="list-style-type: none"> <li>• Include the Attachment: Instructions for filling out the monitoring report form (these instructions supersede the "Guideline: Completing the monitoring report form" (Version 04.0));</li> <li>• Include provisions related to standardized baselines;</li> <li>• Add contact information on a responsible person(s)/ entity(ies) for completing the CDM-MR-FORM in A.6 and Appendix 1;</li> <li>• Change the reference number from <i>F-CDM-MR</i> to <i>CDM-MR-FORM</i>;</li> <li>• Editorial improvement.</li> </ul>
03.2	5 November 2013	Editorial revision to correct table in page 1.
03.1	2 January 2013	Editorial revision to correct table in section E.5.
03.0	3 December 2012	Revision required to introduce a provision on reporting actual emission reductions or net GHG removals by sinks for the period up to 31 December 2012 and the period from 1 January 2013 onwards (EB 70, Annex 11).
02.0	13 March 2012	Revision required to ensure consistency with the "Guidelines for completing the monitoring report form" (EB 66, Annex 20).
01.0	28 May 2010	EB 54, Annex 34. Initial adoption.
Decision Class: Regulatory Document Type: Form Business Function: Issuance Keywords: monitoring report		