

# IMPLEMENTATION OF AN INTEGRATED MRV FRAMEWORK- KENYA EXPERIENCE

---

PRESENTATION BY: YVONNE NYOKABI

MRV AND GHG EXPERT

MINISTRY OF ENVIRONMENT AND FORESTRY, KENYA

12/11/2020



# Brief introduction to Kenya

---

**Population:** 49.4 Million

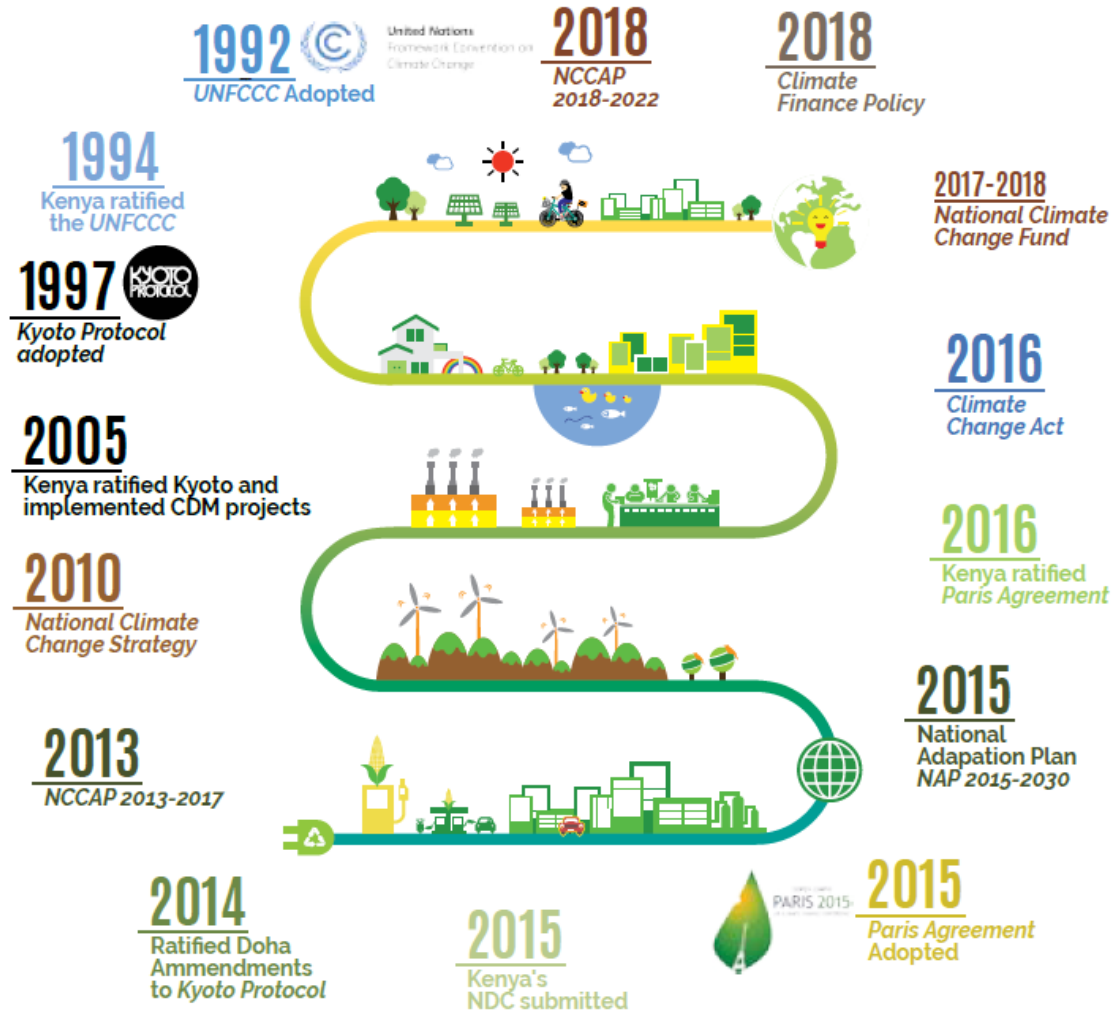
**Key Economic Activity:** Agriculture, Tourism, Manufacturing (mainly agroprocessing)

**80%** of Land area is Arid and Semi Arid

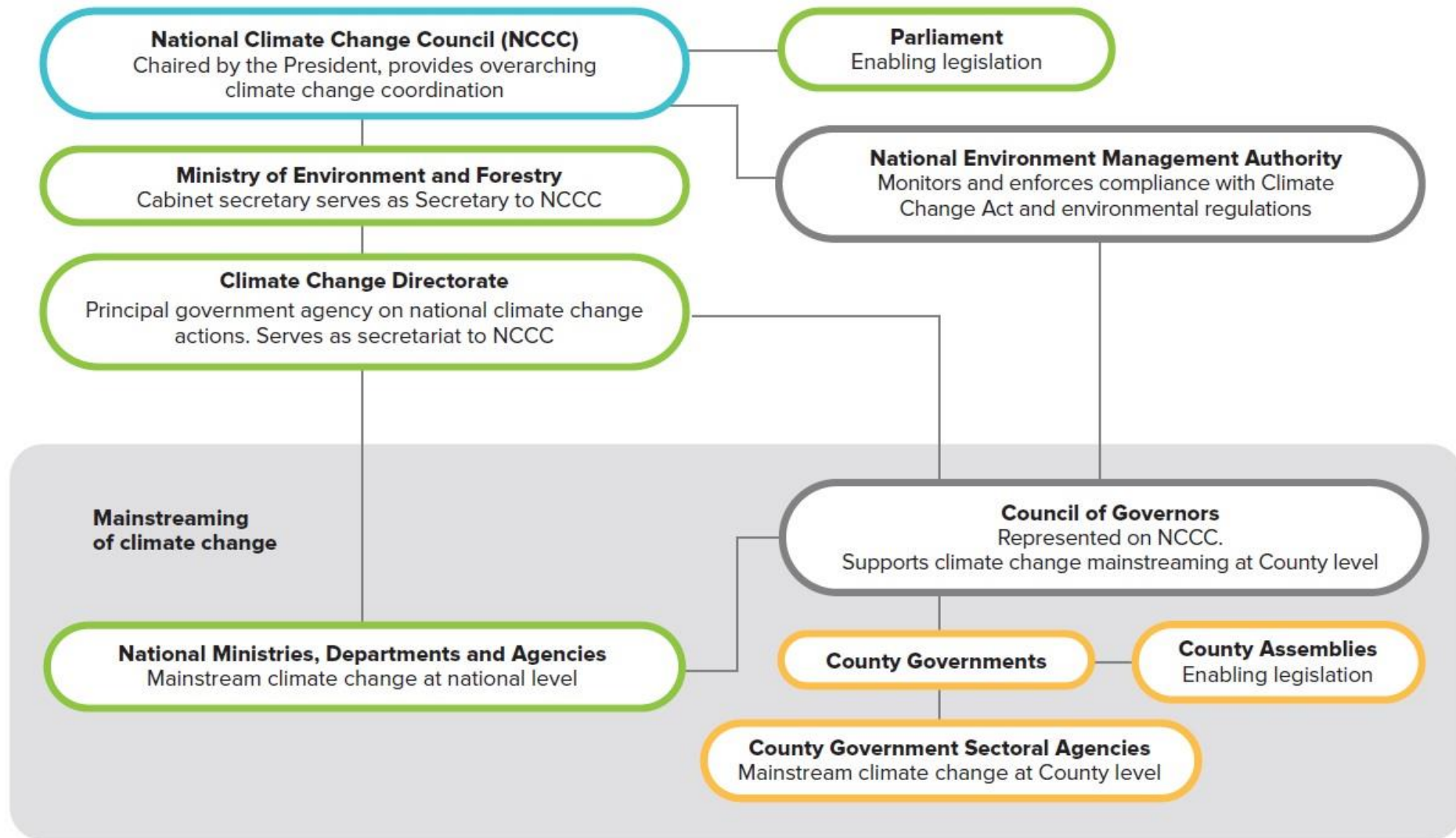
Devolved Governance – 47 County Governments

**Climate Change Impacts:** Floods, Droughts, Landslides





# Kenya's Climate Change Journey including legal frameworks



# CLIMATE CHANGE GOVERNANCE IN KENYA

## Basis for MRV in Kenya

In the context of NDC implementation and according to the National Climate Change Action Plan (NCCAP) 2018-2022, Kenya's MRV/transparency system entails the process by which the following will be tracked and reported at the national and international levels:

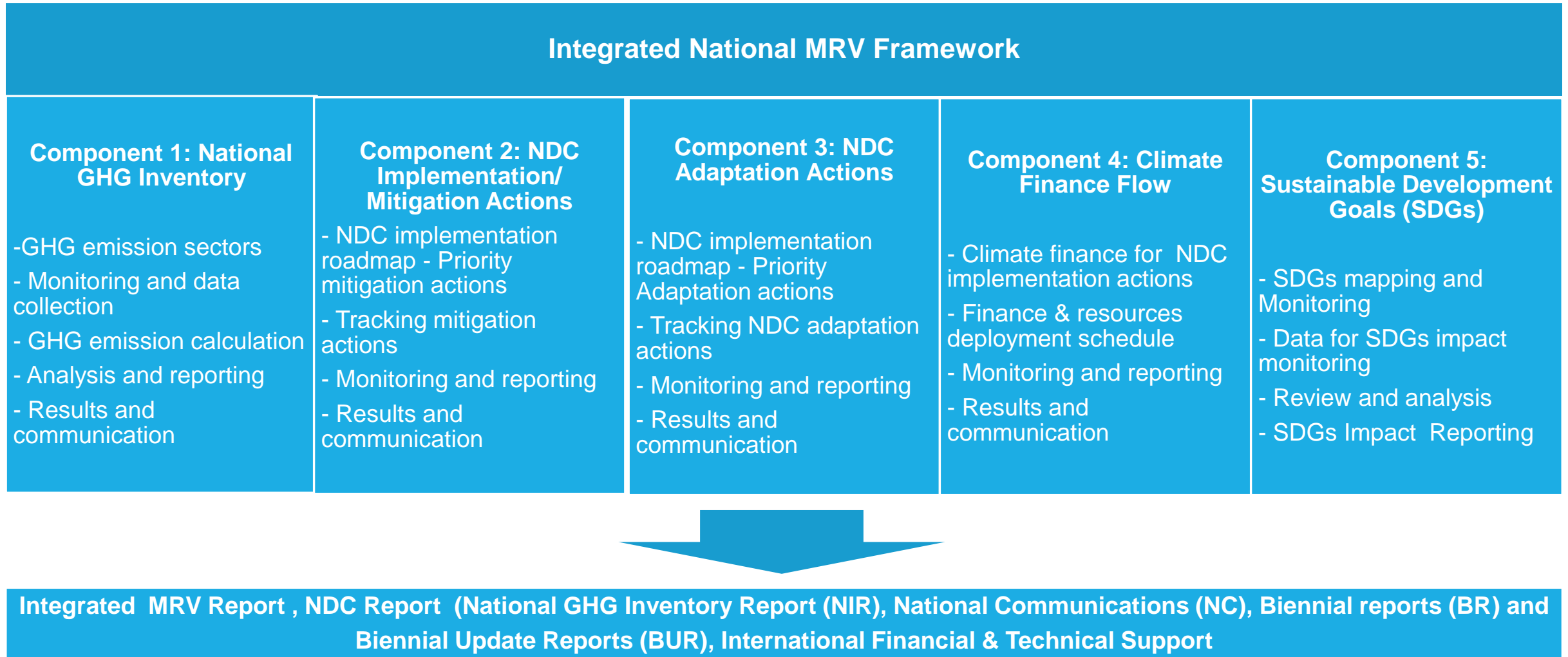
1. The implementation and impacts of **mitigation actions**, including the national **GHG inventory** to enable tracking of progress on implementing and achieving the mitigation component of the NDC.
2. The implementation and impacts of **adaptation actions**, including information related to climate change impacts, vulnerabilities and adaptation
3. The **external support needed and received (finance)** towards these actions, including information on financial, technology development and transfer, and capacity building needs and support received from developed countries. Such support could be financial, technology transfer or capacity building.

Challenges	Needs
Lack of an <b>overall framework for MRV system</b> / Complex MRV systems proposed in the NCCAP, there is need to have an integrated and simplified reporting and verification system	Need for a <b>simple and integrated MRV framework</b>
There is danger of people working in segregation without a harmonized output/  Varied types of data across different actors	<ul style="list-style-type: none"> <li>• <b>Guidelines for reporting</b> and harmonized outputs</li> <li>• <b>Standardized form of activity data collection and reporting instruments</b> across all sectors</li> </ul>
<b>Low level of capacity</b> (expertise, technology, equipment) within sectors to undertake the MRV work	<b>Strengthened capacity</b> to undertake MRV in the country Need for <b>robust and coordinated MRV capacity building plan</b>
Unavailability of Data and <b>uncoordinated data sharing mechanisms</b>	<b>Data Collection Systems</b> to ensure data availability <b>Data quality control and assurance</b> protocols
<b>Limited funding</b> for reporting requirements by the Government	Establishment of <b>institutional frameworks</b> at both national and county level that with <b>adequate funding for mandate</b>
Lack of a <b>subsidiary legislation</b> for reporting under the Climate Change Act, 2016 to guide on reporting	Legislative framework required for <b>mainstreamed reporting</b>

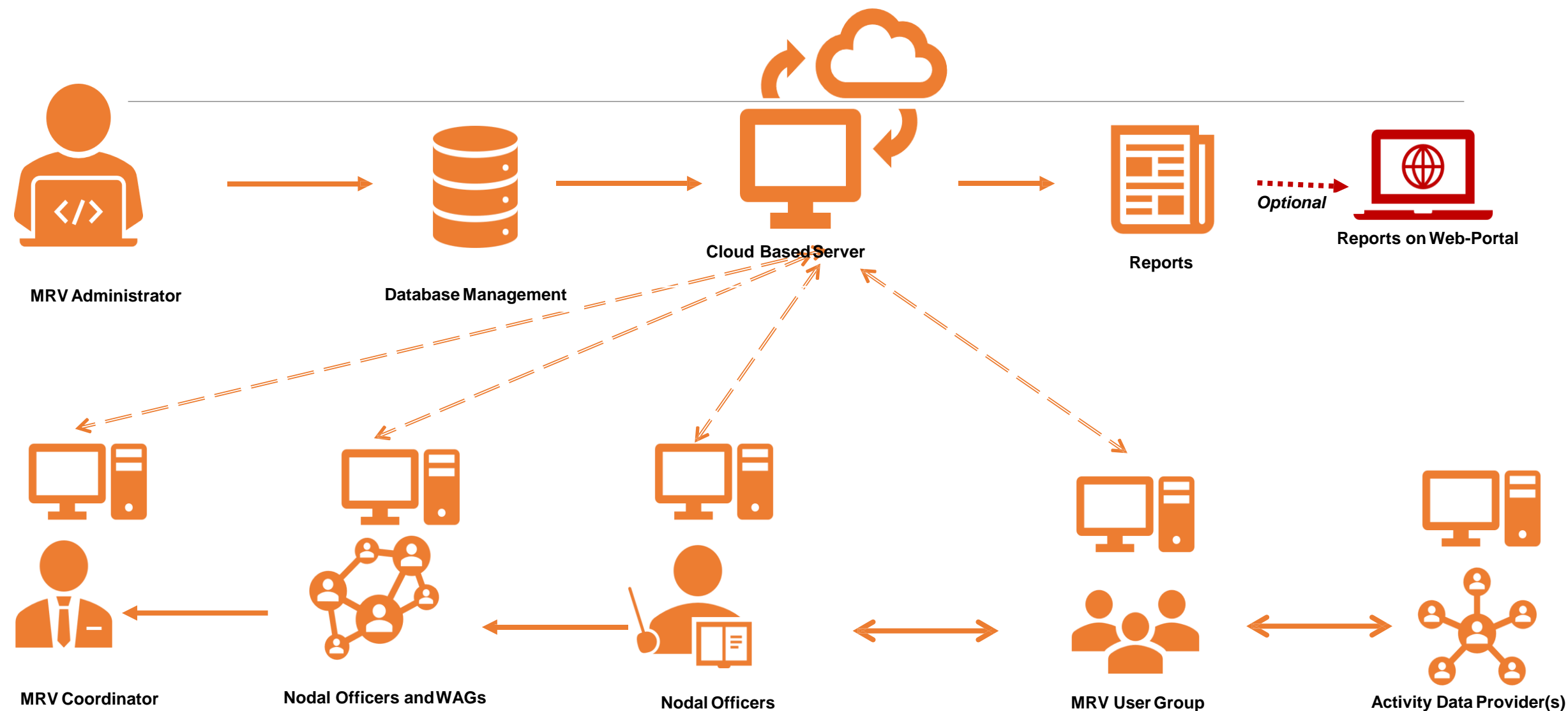
# Challenges and needs in designing Kenya's integrated MRV



# Elements of Kenya's Integrated MRV Framework



# Operational Structure of Integrated MRV Tool





# User Management for Integrated MRVTool

- The users of iMRV tool are the members of the CCD team (or any other relevant team (s) assigned by CCD for preparation of national GHG inventories, NDC Actions/Mitigation/Adaptation Monitoring, Climate Finance/Support monitoring and SDG Tracking



**MRV Coordinator:** Shall have overall responsibility of iMRV Tool and MRV Reports.

MRV Coordinator shall review the MRV System and MRV reports on periodic basis (quarterly, half yearly) or at least once in a year; shall also responsible for backstopping and capacity building.



**MRV Administrator:** Shall have overall responsibility of iMRV Tool implementation and functions.

MRV Administrator will be a Master User with all privileges and rights; shall also Approve, edit and delete user registration and access, approve/edit emission factors, database etc. on recommendation of MRV Coordinator or Nodal Officer.



**Nodal Officers:** Shall have the right to Validate and Verity the entered activity data.

Each Module shall have at least one Nodal Officer; designated by the MRV Coordinator. Nodal officer shall validate and verify the activity data entered in the iMRV tool i.e. approve or reject.



**MRV Module and Sector User Group:** Will have the right to enter/edit data in respective sector(s).

Module or Sector User will be provided these rights by the MRV Administrator on recommendation of their Nodal Officer or MRV Coordinator.

- Each user is assigned a role and different levels of the access rights, roles are not necessarily identical to a person's title (e.g. National Focal Point) and that a person can take on several roles.

2

Increase food and nutrition security productivity and resilience of the ag as low-carbon manner as possible

Climate change is negatively impacting agricultural productivity value chain actors, including households. An increase in the severity of climate change-related disasters, such as droughts and floods, threatens food security, and negatively impacts small-scale and large-scale farmer and fisher communities.



Food and Nutrition Security



GDP growth of agricultural sector;  
Livestock deaths from drought / number of livestock due to drought;  
Agricultural land under irrigation (acreage); and  
GHG emissions in the agriculture, forestry, and other land use

# Synergizing data collection for MRV and SDGs

Kenya undertook an SDG impact assessment of the actions it while developing its National Climate Change Action Plan 2018–22.

The analysis, conducted with both climate change and SDG focal points from sector ministries, helped identify key win-win priorities for climate action and the SDGs, such as promoting clean cooking stoves and rangeland rehabilitation.

The Integrated MRV tool thus provides for reporting of climate action as well as SDGs .

# Snapshot of the SDGs Assessment – Report – Project Specific



## Kenya Integrated Monitoring Reporting and Verification (MRV) Tool



Welcome Administrator  
admkenya2106@gmail.com

- GHG Inventory
- Create/Edit Project
- Mitigation Actions
- Adaptation Actions
- Climate Finance
- SDG Assessment
- Reports
- Database
- My Approvals
- Admin DashBoard

### Project Details

Project Id	KEN-0111-03-2 Kenya Agriculture and Risk Management Program-1
Project Cost (USD)	179200000.00
Project Location	Multiple
Implementing Agency	County Governments
Other Party	MALFI, KALRO, KFS, CBOs, NGOs, DPs
Commissioning Date	2018-04-01
Operation Lifetime	5

☐ Climate Finance Flow

☒ SDG

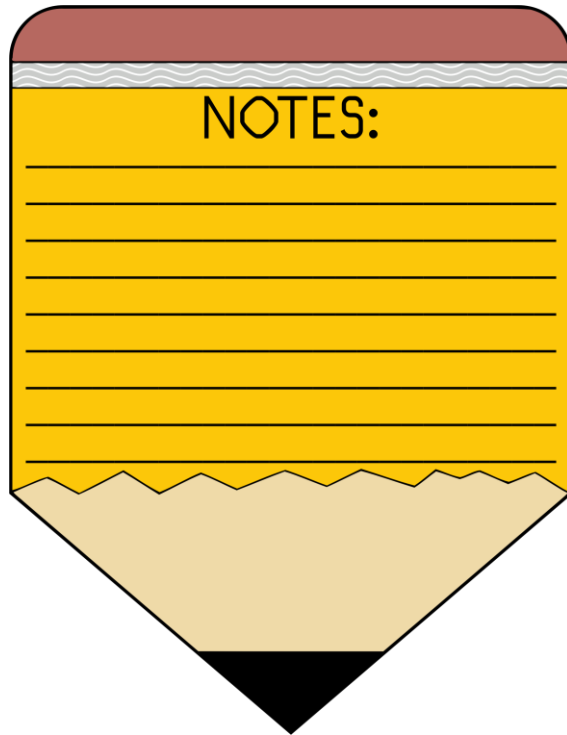
### SDG-Qualitative Impacts



### SDG-Quantitative Impacts

	Expected Value	2019
<b>Employment</b>		
Number of new jobs created (total)	10000.0	10000.0
Number of new jobs created for senior positions (e.g.managers)	1000.0	500.0
Migration avoided due to new jobs created (people)	500.0	500.0
Number of new jobs created for poor and vulnerable sections	10000.0	1000.0
Additional income generated in public sector employment	1000000.0	1000000.0
Number of new jobs created for specialized skills (e.g.technical)	5000.0	100.0
Additional income generated in private sector employment	1.0E8	1.0E7

# Parting Shot!



- ❑ The **National Climate Change Action Plan 2018 - 2022** was **designed** to integrate SDGs and other frameworks including the Sendai Framework for Disaster Reduction.
- ❑ **Robust Institutional Frameworks** - Climate Change Focal Points at National and County Level ease data collection by sectors.
- ❑ **Learning by doing** approach has been useful in building critical mass of experts in the Country with knowledge of MRV
- ❑ **Link MRV** with ongoing processes in the country including tracking of climate finance and National/County M&E processes



This Photo by Unknown Author is licensed under [CC BY-ND](#)

---

Yvonne Nyokabi  
GHG and MRV Expert  
Ministry of Environment and Forestry  
Email: [yvonnenyokabi@gmail.com](mailto:yvonnenyokabi@gmail.com)