

# Integration of capacity-building in the mandates and work programme of the LEG

**Discussions on delivery of capacity-building support under the Convention**

Panama city, Panama, 2 October 2011



***Batu Krishna Uprety, LEG Vice-Chair***

UNFCCC, Least Developed Countries Expert Group

**LDC work programme** = acknowledgement of specific needs and special situations of LDCs as least capable of dealing with the adverse effects of climate change. Supported through the LDCF and through contributions from Annex II Parties.

**Six elements:**

1. Supporting the **preparation and implementation of NAPAs**;
2. Strengthening existing and, where needed, establishing, **national climate change secretariats and/or focal points** to enable the effective implementation of the Convention and the Kyoto Protocol in the LDC Parties;
3. Providing ongoing **training in negotiating skills and language**, where needed, to develop the capacity of negotiators from the LDCs to participate effectively in the climate change process;
4. **Promotion of public awareness programmes** to ensure the dissemination of information on climate change issues;
5. **Development and transfer of technology**, particularly adaptation technology (in accordance with decision 4/CP.7);
6. **Strengthening the capacity of meteorological and hydrological services** to collect, analyse, interpret and disseminate weather and climate information to support the implementation of NAPAs.



Since its establishment (Decision 29/CP.7), the LEG mandate has expanded with the adoption of new COP decisions on the work of the LEG (Decisions 4/CP.11, 8/CP.13, 6/CP.16).

**The LEG is mandated to provide technical advice and guidance on:**

- **Preparation and implementation of NAPAs** and, since COP 16 on:
- **Revision and update of NAPAs**
- **Identification of medium- and long-term adaptation needs, their integration into development planning and the implementation of identified adaptation activities**
- **Strengthening gender-related considerations** and considerations regarding vulnerable communities within LDC Parties
- **The implementation of the other elements of the LDC work programme** other than the preparation and implementation of NAPAs that are relevant to the expertise of the LEG



## IDENTIFICATION OF ADAPTATION NEEDS AND ACTIVITIES: LEG SUPPORT TO LDCs FOR NAPA PREPARATION

---

- **2002** - Conduct of a **NAPA global launch workshop**
- **2002** – **LEG annotated guidelines for the preparation of NAPAs** to provide clarifications on the activities that would need to be undertaken at each step of the NAPA preparation process
- **2003** - **Four regional training workshops on the preparation of NAPAs** using the LEG annotated guidelines for the preparation of NAPAs.
- **2007**- **Stock taking meeting on progress made by Parties** in the preparation and implementation of NAPAs. Discussion on best practices, constraints, support from the GEF and its agencies and other UN agencies and institutions, integration of NAPAs into national planning.
- **Ongoing** - **Provision of specific advice to LDCs** upon request, **review of draft NAPAs before submissions, case files of countries preparing their NAPA** to record progress and help identify and solve bottlenecks



**Purpose/Target** - training in the design of an implementation strategy for the NAPAs, and preparation and submission of project documents to the GEF under the LDCF; and, where needed, provision of technical support to those LDC Parties that were still preparing their NAPAs.

### Date and location

3-6 November 2010, **Training workshop for LDCs in the Pacific** in Apia, Samoa

4-8 September 2010, **Training workshop for Lusophone LDCs** in Sao Tome, Sao Tome and Principe

4-8 May 2010, **Training workshop for Asian LDCs** in Vientiane, Lao PDR

8-12 February 2010, **Training workshop for Francophone LDCs in Bamako**, Mali

19 – 23 October 2009, **Training workshop for Anglophone African LDCs** in Dar es Salaam, Tanzania

**Collaboration** – with the GEF and its agencies and when possible regional centres of excellence

**A total of 173 participants trained**





LEG training workshop for Francophone LDCs,  
Bamako, February 2010



LEG training workshop for Asian LDCs,  
Vientiane, May 2010



LEG training workshop for Portuguese's-  
speaking LDCs, Sao Tome, September 2010

### LEG outreach products

Guides, Tools, Technical papers, Publications, **Step-by-step guide for implementing NAPAs** (in English, French and Portuguese), NAPA Source Kit CD-ROM, a list of Frequently asked questions about LDCs, the LEG and NAPAs (available on the LDC Portal of the UNFCCC website), a database on submitted NAPAs, NAPA priority project profiles, and projects under implementation (available on the LDC Portal of the UNFCCC website)

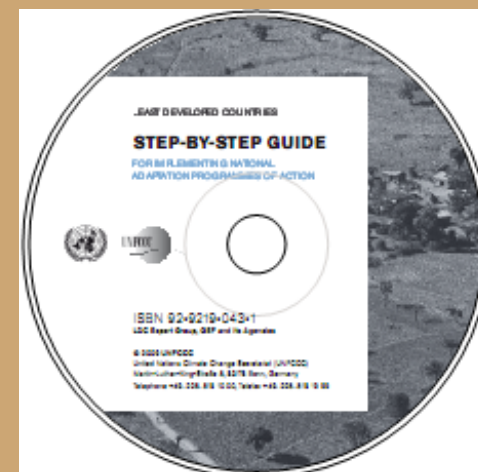
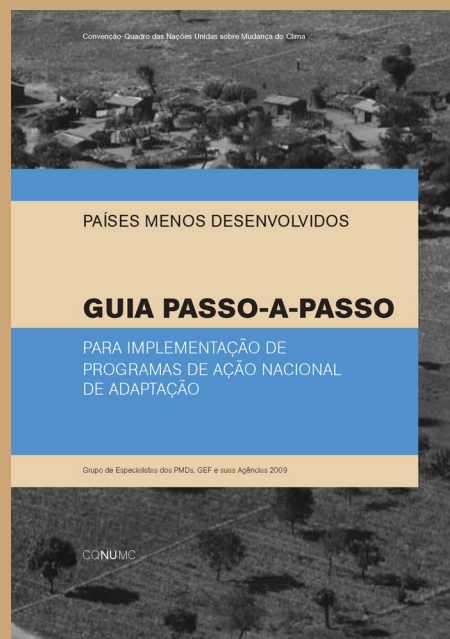
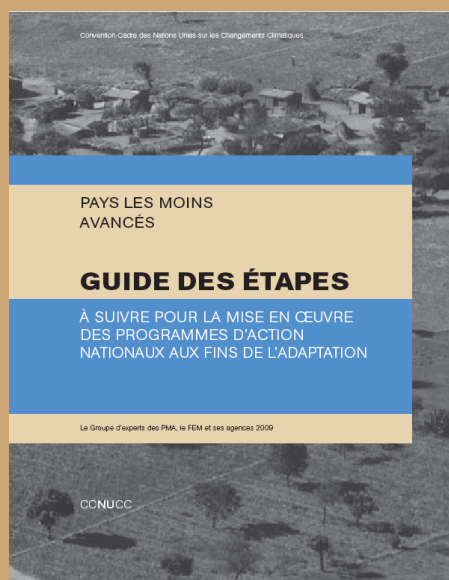
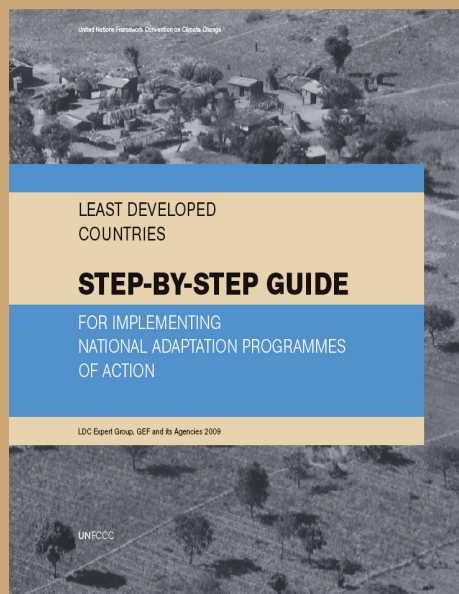
### Other support to LDCs on education, training and public awareness

- Internal adoption of a system of rapporteurs, one for English-speaking LDCs, one for French-speaking LDCs, one for Portuguese-speaking LDCs to better reach out to LDCs
- LEG side events at SBI sessions = platform for the LEG to share new information with LDC and other Parties and for LDCs to share experiences among themselves and others





## LEG STEP-BY-STEP GUIDE and NAPA Source Kit CD-ROM available in English, French and Portuguese



**Copies of all products available on the LDC Portal <<http://unfccc.int/ldc>>**

**For hard copies contact the secretariat**



## CONCLUSIONS

---

### LEG role thus far, in provision of capacity-building to LDCs

- Development of methods and tools for the preparation and implementation of NAPAs
- Training in the preparation and implementation of NAPA
- Provision of specific advice to LDCs upon request
- Monitoring preparation and implementation of NAPA
- Cooperation with experts under the Convention

### Two examples of practical collaboration

- 2003 – Training workshop on NAPA preparation with UNITAR and GEF
- 2009/2010 – Training workshop on NAPA implementation with GEF, agencies and regional centres of excellence when possible

### Reporting to the Convention

LEG report on its capacity-building support to LDCs in its report to the SBI at each session

### Suggestions to improve reporting and coordination with others assisting LDCs

- **LEG to develop in 2012 an online platform for mobilizing and engaging a wide range of organizations and institutions and for sharing experiences and lessons learned in supporting LDCs in implementation of the LDC work programme; invitation to LEG meetings**
  - **LEG welcomes other suggestions**
- 



---

# THANK YOU

The LEG contact: [leghelp@unfccc.int](mailto:leghelp@unfccc.int)

LDC webportal: <http://unfccc.int/ldc>

