

Strengthening gender considerations in the process to formulate and implement national adaptation plans (NAPs)

**Training Programme on Mainstreaming Gender Considerations in Climate Change
Adaptation Projects**

4 to 8 December 2017
Bangkok, Thailand



Motsomi Maletjane, UNFCCC Secretariat

(Presentation based on the work of the Least Developed Countries Expert Group - LEG)

Objectives of the NAP process (decision 5/CP.17)

- ☐ To **reduce vulnerability** to the impacts of climate change, by building **adaptive capacity** and **resilience**;
- ☐ To **facilitate the integration of climate change adaptation**, in a coherent manner, into relevant new and existing policies, programmes and activities, in particular development planning processes and strategies, within all relevant sectors and at different levels, as appropriate.

Global goal on adaptation (Article 7 of the Paris Agreement)

- ☐ **Enhancing adaptive capacity, strengthening resilience and reducing vulnerability** to climate change, with a view to contributing to **sustainable development** and ensuring an adequate adaptation response in the context of the global temperature limit of less than 2°C.



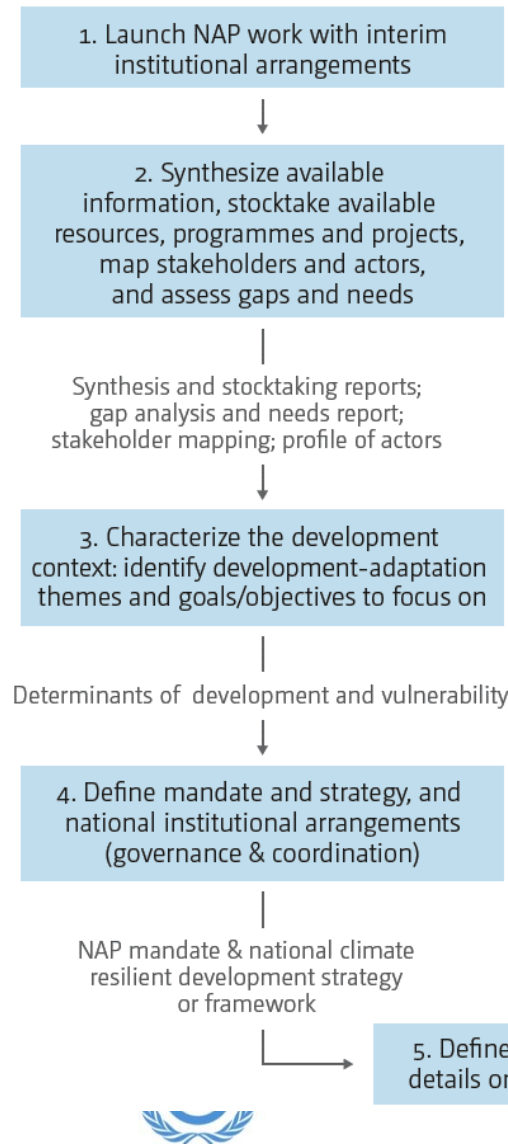
Guiding principles for NAPs (decision 5/CP.17)

- ☐ Continuous planning process at the national level with iterative updates and outputs
- ☐ Country-owned, country-driven
- ☐ Not prescriptive, but flexible and based on country needs
- ☐ Building on and not duplicating existing adaptation efforts
- ☐ Participatory and transparent
- ☐ Enhancing coherence of adaptation and development planning
- ☐ Supported by comprehensive monitoring and review
- ☐ Considering vulnerable groups, communities and ecosystems
- ☐ Guided by best available science
- ☐ Taking into consideration traditional and indigenous knowledge
- ☐ Gender-sensitive

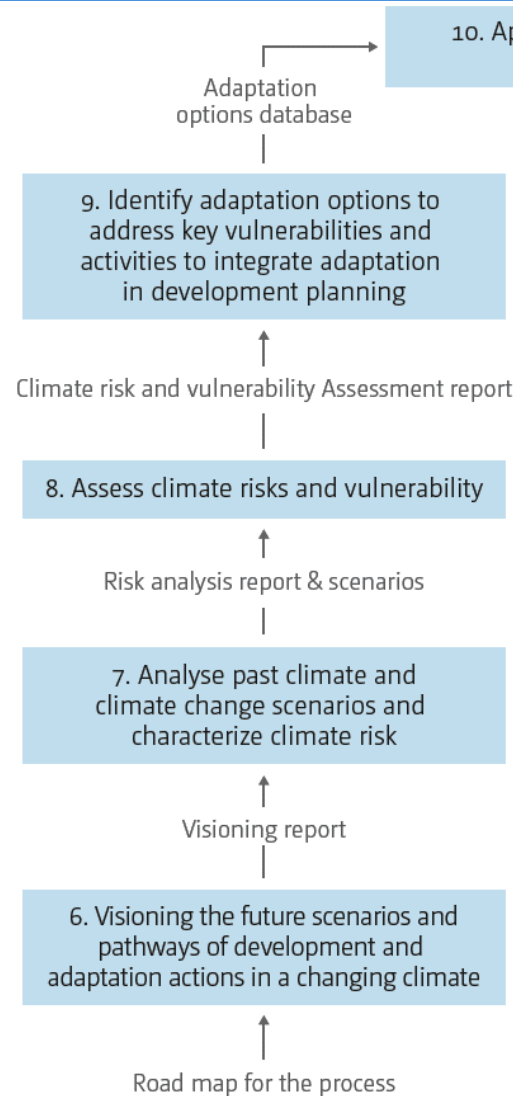


Sample process to formulate and implement a National Adaptation Plan

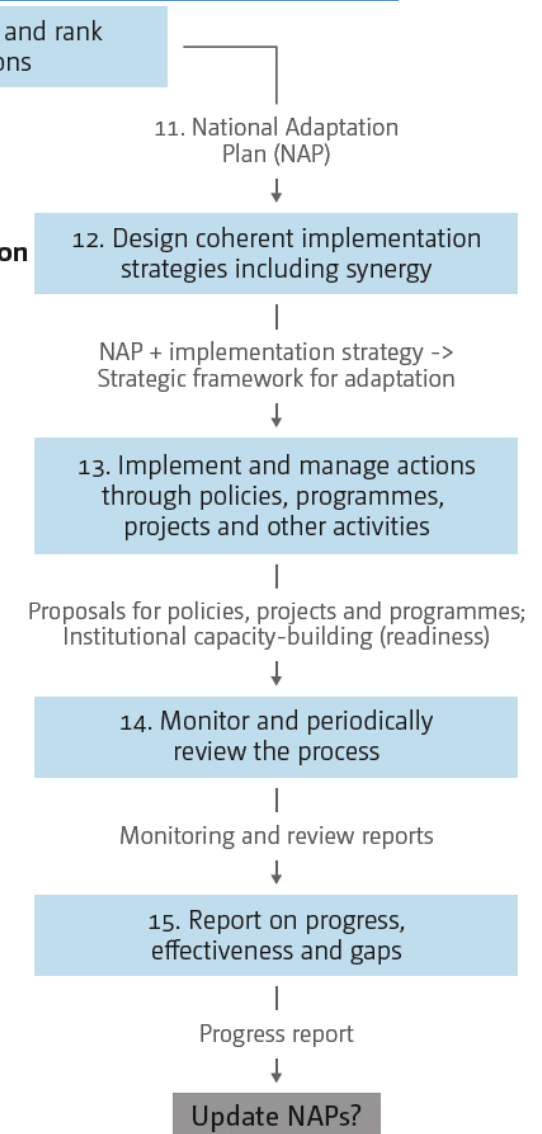
Element A: Lay the groundwork and address gaps



Element B: Preparatory elements

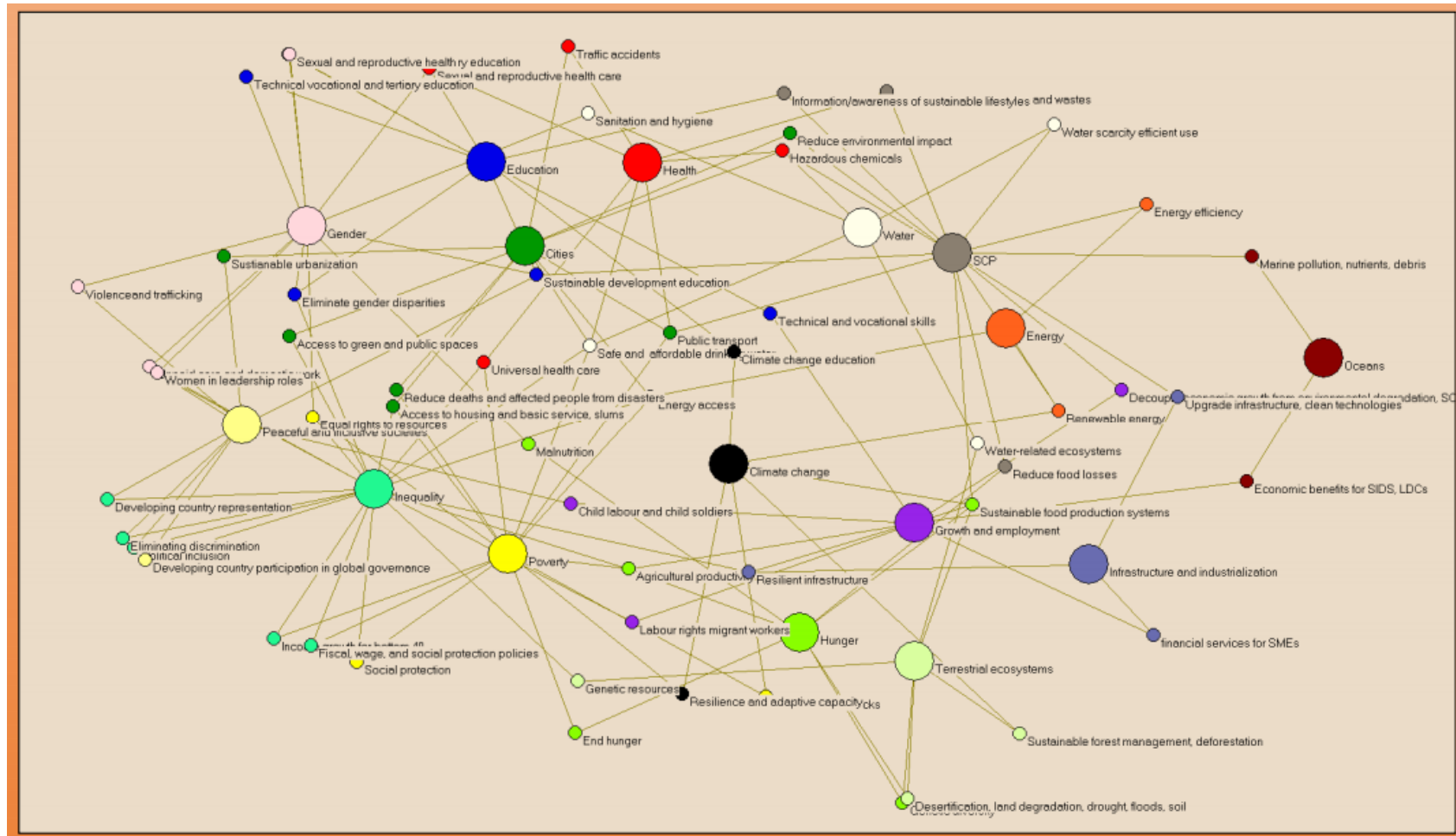


Element C: Implementation strategies



Element D: Reporting, monitoring and review

SDGs as a linked system of goals and targets



Source: David Le Blanc, "Towards integration at last? The SDGs as a Network of Targets", Rio+20 Working Paper 4



The NAP is the main output of the process, and is designed to be iterative, country-driven, and would provide the substance of the adaptation ambition expressed in the NDCs and Adaptation Communications under the Paris Agreement

Financial support for the formulation of NAPs and implementation of policies, programmes and projects identified therein is well grounded in the GCF



Strengthening gender considerations in NAPs

- ❑ To guarantee a "gender-sensitive approach" in the formulation and implementation of NAPs
- ❑ This would entail a logical, interconnected, and comprehensive inclusion of gender considerations throughout
- ❑ Each country needs to set up structures best suited to their particular situations
- ❑ Next slides offer specific ways on how to do so under NAPs at national level

UNFCCC, 2015. Strengthening gender considerations in adaptation planning and implementation in the least developed countries, LDC Expert group 2015: http://unfccc.int/files/adaptation/application/pdf/50301_05_unfccc_gender.pdf



Stocktaking, institutional arrangements, addressing gaps, etc.

ELEMENT A

LAY THE GROUNDWORK AND ADDRESS GAPS

STEP A.1.
Initiating and launching the NAP process

STEP A.2.
Stocktaking: identifying available information on climate change impacts, vulnerability and adaptation and assessing gaps and needs of the enabling environment for the NAP process

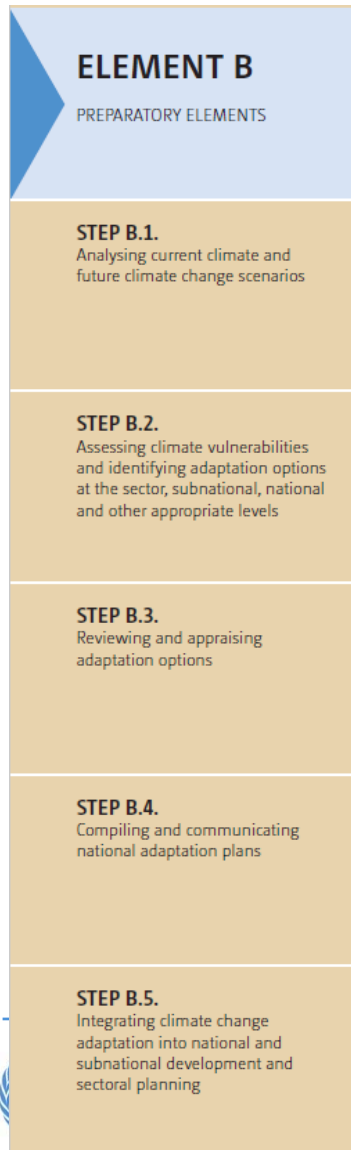
STEP A.3.
Addressing capacity gaps and weaknesses in undertaking the NAP process

STEP A.4.
Comprehensively and iteratively assessing development needs and climate vulnerabilities

- ☐ **Assess available information** regarding the consideration of particularly vulnerable groups including women, boys, girls, elderly, in adaptation planning and implementation, and carry out further research on this topic in the country
- ☐ **Analyse gender gaps** – such as existing inequalities in areas such as access to resources, economic participation, health, education, decision-making, etc.
- ☐ Undertake **outreach** to ensure that different stakeholders understand the gender dynamics of climate change
- ☐ **Ensure gender balance** in **community engagement** activities and at **decision-making** levels

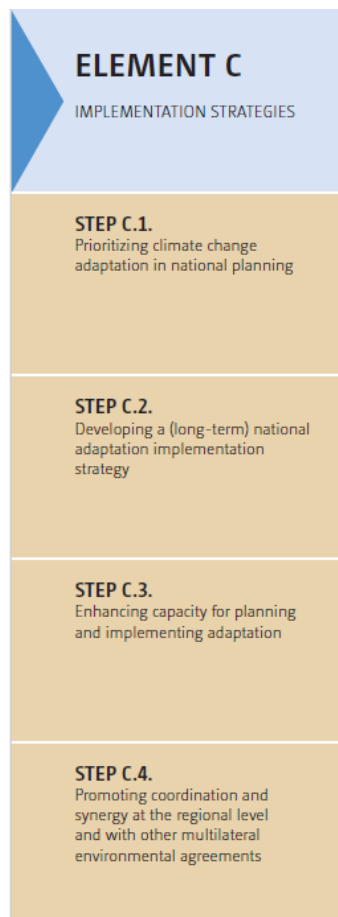


Assessments – of climate risks, leading to adaptation options

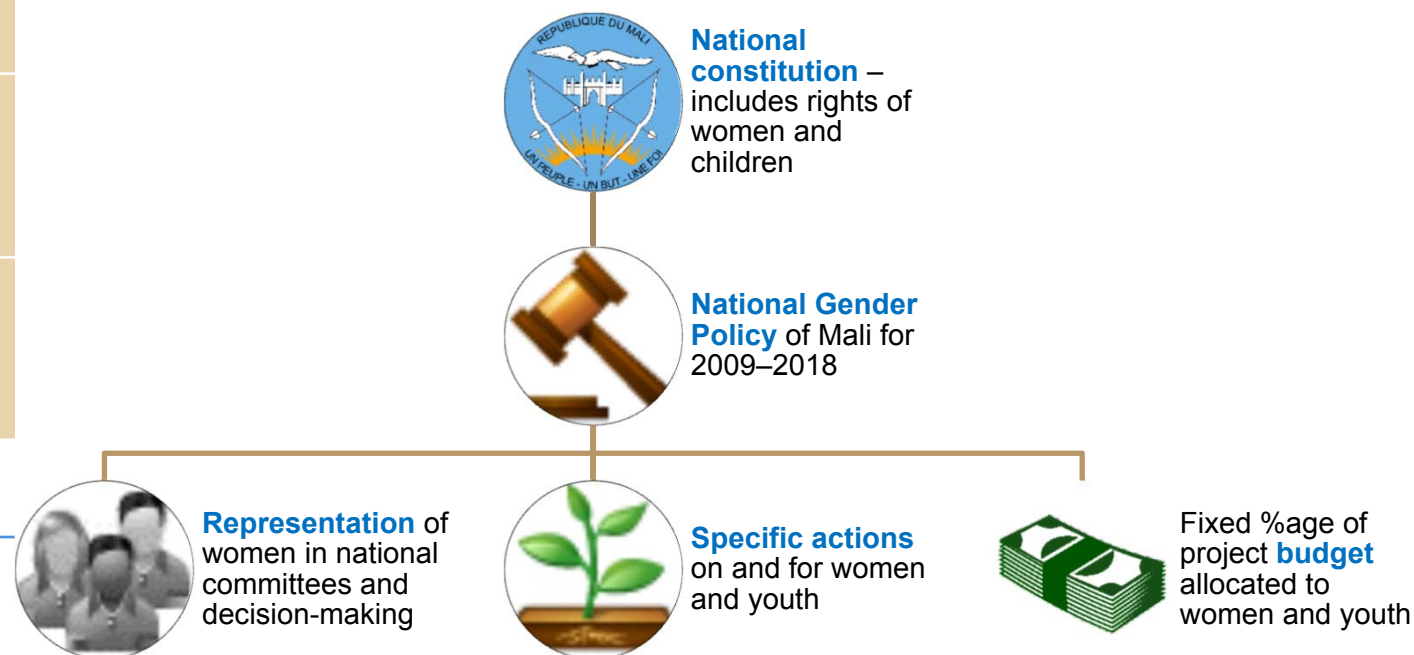


- ☐ **Use sex-disaggregated data** in vulnerability and adaptation assessments;
- ☐ **Integrate the perspectives of women** and draw on their unique adaptation knowledge and local coping strategies when identifying adaptation options;
- ☐ Where possible, develop national and local **guidelines** to deepen assessments on gender related aspects

Implementation



- ❑ **Tailor and implement NAP activities** based on gender dynamics and the disproportionate impacts on women and men, boys and girls
- ❑ Embrace **women (and men) as agents of change** within their communities, while undertaking the process to formulate and implement NAPs
- ❑ Empower women to access resources



Reporting, monitoring and evaluation

ELEMENT D

REPORTING, MONITORING
AND REVIEW

STEP D.1.
Monitoring the NAP process

STEP D.2.
Reviewing the NAP process to
assess progress, effectiveness and
gaps

STEP D.3.
Iteratively updating the national
adaptation plans

STEP D.4.
Outreach on the NAP process
and reporting on progress and
effectiveness

- ☐ **Monitor and report on the integration of gender** considerations in the process to formulate and implement NAPs;
- ☐ **Evaluate the integration of gender** considerations into adaptation and make improvements if necessary.



Ongoing work on gender and climate change adaptation

- ❑ Technical guidance and support by the LEG on strengthening gender considerations under the process to formulate and implement NAPs
- ❑ Work under the different bodies and programmes (AC, NWP, loss and damage, etc.) touches on topics with special vulnerabilities, and are guided by the same gender-sensitive approach. Examples include:
 - ❖ AC – Technical Expert Meetings in 2018 to focus on adaptation planning for vulnerable groups, communities and ecosystems.
 - ❖ NWP – human settlements, health, etc.
 - ❖ Loss and damage Executive Committee – to take into account “... segments of the population that are already vulnerable owing to geography, socioeconomic status, livelihood, gender, age, indigenous or minority status or disability” as an overriding principle



SBI assessment of progress made in NAPs (4/CP.21, paras 11-13)

- ❑ SBI 48 (April/May 2018) to assess progress made in the process to formulate and implement NAPs:
 - ❖ Achievement of the **objectives** of NAPs;
 - ❖ **Experiences, best practices, lessons learned, gaps and needs;**
 - ❖ **Support** provided and received
- ❑ The assessment should take into account all the **guiding principles** of the process to formulate and implement NAPs (see slide 3)
- ❑ Steps
 - ❖ **Submissions by Parties and organizations;**
 - ❖ Info via **online questionnaire** on NAP Central – ongoing basis;
 - ❖ Synthesis report by the secretariat;
 - ❖ Expert meeting – 5 to 9 Feb 2018, in Sao Tome and Principe
 - ❖ Report on the meeting for consideration by SBI 48



Motsomi Maletjane
Adaptation Programme
UNFCCC Secretariat
mmaletjane@unfccc.int

