

MONITORING REPORT FORM (CDM-MR) *
Version 01 - in effect as of: 28/09/2010

CONTENTS

- A. General description of the project activity
 - A.1. Brief description of the project activity
 - A.2. Project participants
 - A.3. Location of the project activity
 - A.4. Technical description of the project
 - A.5. Title, reference and version of the baseline and monitoring methodology applied to the project activity
 - A.6. Registration date of the project activity
 - A.7. Crediting period of the project activity and related information
 - A.8. Name of responsible person(s)/entity(ies)
- B. Implementation of the project activity
 - B.1. Implementation status of the project activity
 - B.2. Revision of the monitoring plan
 - B.3. Request for deviation applied to this monitoring period
 - B.4. Notification or request of approval of changes
- C. Description of the monitoring system
- D. Data and parameters monitored
 - D.1. Data and parameters used to calculate baseline emissions
 - D.2. Data and parameters used to calculate project emissions
 - D.3. Data and parameters used to calculate leakage emissions
 - D.4. Other relevant data and parameters
- E. Emission reductions calculation
 - E.1. Baseline emissions calculation
 - E.2. Project emissions calculation
 - E.3. Leakage calculation
 - E.4. Emission reductions calculation
 - E.5. Comparison of actual emission reductions with estimates in the registered CDM-PDD
 - E.6. Remarks on difference from estimated value

MONITORING REPORT
Version 03: Date: 15/08/2012

Shandong Huaneng Shouguang 49.5MW Wind Farm Project
CDM registration reference No. 3391
The 2nd Monitoring Period: 25/12/2010- 24/12/2011 (first and last days included)

删除的内容: 02

删除的内容: 03

SECTION A. General description of the project activity

A.1. Brief description of the project activity: >>

>>

1. Purpose of the project activity and the measures taken to reduce greenhouse gas emissions;
Shandong Huaneng Shouguang 49.5MW Wind Farm Project (hereinafter referred as "the proposed project") is located on the west of the old river mouth, Dajiawa town, Shouguang county, Weifang City, Shandong province, P. R. China. It is designed to generate electricity from wind, a clean and renewable resource and provide annual net on-grid power generation of 96.4788GWh and achieve 101,765tCO₂e GHGs reductions per annum.

The area covered by North China Power Grid (hereinafter referred as NCPG) is abundant in coal and oil resources, and thermal power plant is the major power source of NCPG. By avoiding operation of existing thermal power plants and future expansion of fossil fuel-based generation by the NCPG, the proposed project displaces part of thermal power in NCPG by making use of clean and renewable energy.

2. Brief description of the installed technology and equipments;
The proposed project is a grid connected wind farm with total installed capacity of 49.5MW (33×1500kW), which supplies 96.4788GWh electricity to NCPG annually, and 33 wind turbines with rated capacity of 1500kW each are installed according to the proper design based on local climate and geographical condition. The height of the turbine hub is 80m, and the turbines are distributed with row spacing of 540m and column spacing of 500m.

3. Relevant dates for the project activity (e.g. construction, commissioning, continued operation periods, etc.).

Date	Key events
15/04/2008	The starting date of construction ¹
16/12/2008	The project began commissioning and then turned into full operation ²
19/07/2010	Registration date and starting date of the crediting period
19/07/2010-24/12/2010	The 1 st monitoring period

4. Total emission reductions achieved in this monitoring period.
From 25/12/2010 to 24/12/2011, the net power supplied to the grid by the project is 89,504.80MWh, corresponds to the emission reductions of 94,409tCO₂e.

A.2. Project Participants

>>

Name of Party involved (*) ((host) indicates a host Party)	Private and/or public entity(ies) project participants (*) (as applicable)	Kindly indicate if the Party involved wishes to be considered as project participant (Yes/No)
People's Republic of China	Huaneng Shouguang Wind	No

¹ Please refer to the Construction Contract.

² Please refer to the Project Operation Log.

(Host)	Power Co., Ltd	
Japan	The Kansai Electric Power Co., Inc.	No

A.3. Location of the project activity:

>>

The proposed project is located on the west of the old river mouth of Dajiawa township, Shouguang county, Weifang city, Shandong Province, P.R. China, 10km away from Dajiawa town, 40km away from Shouguang City and 150km from Jinan city (provincial capital). Shouguang city lies in the north of Shandong province, in the middle part of Shandong peninsula and southwest to the Laizhou Bay. It is east to the Hanting district and Weicheng district of Weifang city, south to Qingzhou city and Changle city, west to the Guangrao county of Dongying city and north to Bohai Sea. According to the data measured by the Marine Environment Monitoring Center Station, the proposed project's geographical coordinate is longitude 118°56'59.636''~119°02'53.821''E and latitude 37°13'44.198''~37°16'02.668''N, and with its geographical coordinate of substation at longitude 118°56'59.636''~118°57'11.300''E and latitude 37°14'14.110''~37°14'20.603''N.

A.4. Technical description of the project

>>

The proposed project installs 33 IEC3 type three-blade rotor wind turbines with rated capacity of 1500KW, build a control centre including a 35kV switchyard and central control centre, and extend 110kV transmission lines for power transmission. The proposed project is connected to Shouguang Power Grid (SGPG), and then to the North China Power Grid (hereinafter referred as NCPG) finally. Please refer to Section C for the diagramme.

A.5. Title, reference and version of the baseline and monitoring methodology applied to the project activity:

>>

The project operation has been monitoring in accordance with the requirements of the applicable monitoring methodology as described in PDD and the approved monitoring methodology ACM0002: "Consolidated baseline methodology for grid-connected electricity generation from renewable sources" (ACM0002/ Version 09, Sectoral Scope: 01, EB45); Tool to calculate emission factor for an electricity system (version 01.1).

A.6. Registration date of the project activity:

>>

19/07/2010

A.7. Crediting period of the project activity and related information (start date and choice of crediting period):

>>

The proposed project employs the renewable crediting period (7 years*3), and the first crediting period is from 19/07/2010 to 18/07/2017, and there was no post-registration change to the start date of the crediting period.

A.8. Name of responsible person(s)/entity(ies):

>>

The monitoring report is compiled by the Beijing Changjiang River International Holding.

Lisa Tu	lisa_tu@criholding.com	+86-10-8724 6058 ext 6016
Youchun Ge	geyouchun@criholding.cn	+86-10-8724 6053

Address: F20, Tower B, Yicheng International Center, No. 10 Ronghua Zhonglu, Economic and Technical Development Zone, 100176, Beijing

The entity and the persons listed above are not considered as project participants.

SECTION B. Implementation of the project activity
--

B.1. Implementation status of the project activity

>>

1) Starting date of operation

16/12/2008. The project consists of one site only and the implementation is not phased.

2) Actual operation of the project activity during this monitoring period

There were no special events during the monitoring period. No equipment was exchanged or overhauled.

3) Events affecting the applicability of the methodology

No events occurred that affected the applicability of the methodology.

B.2. Revision of the monitoring plan

>>

The actual monitoring plan is consistent with the one in the registered PDD, therefore, there was no revision in the monitoring plan.

B.3. Request for deviation applied to this monitoring period

>>

No applicable.

B.4. Notification or request of approval of changes
--

>>

No applicable.

SECTION C. Description of the monitoring system

>>

The proposed project is connected to SGPG within NCPG, the power delivered to the grid is determined and monitored by two bidirectional meters. Meter (M1) was installed at the output side of the switching substation and meter (M2) was installed at the output side of the main transformer in the project site. The meters can measure both of the electricity delivered to the grid and the electricity dispatched from the grid, and the net on-grid power supply (EG_y) is defined as $(EG_{out,y} - EG_{in,y})$. The locations of the meters are shown in Figure as follows.

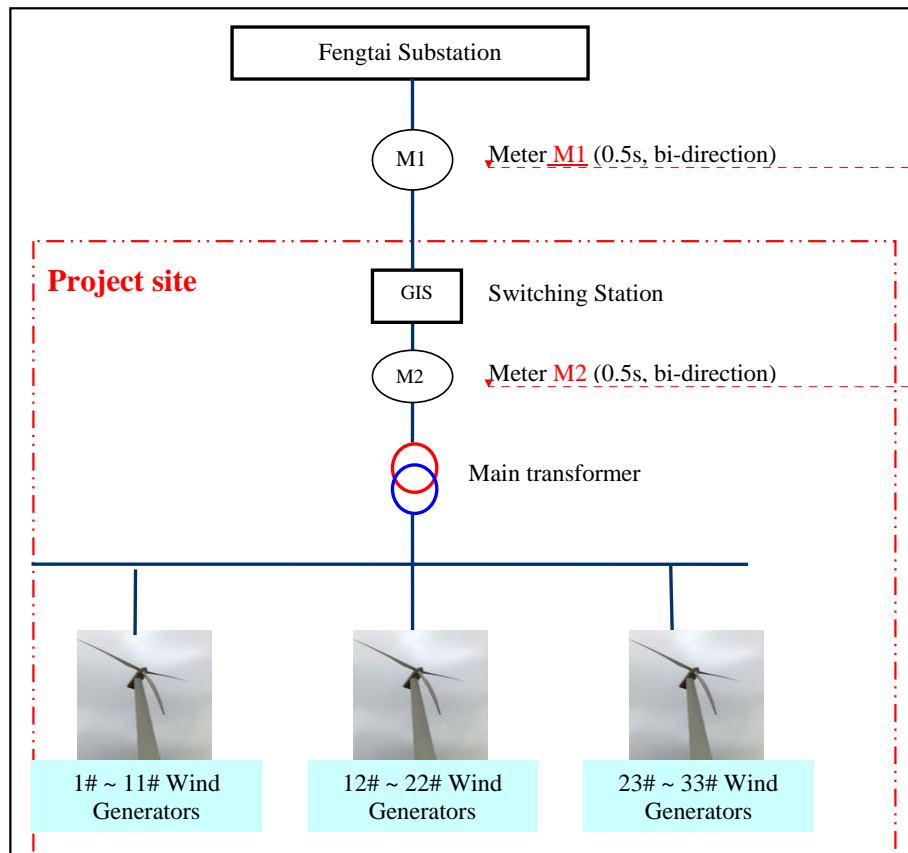


Figure: Diagram of the Grid Connection

※ Data collection system

- Meter (M1) installed in the Fengtai Substation is recorded data monthly³ by the grid company together with the project owner.
- The Project owner monitors on-site meter M2 at the project site and records data continuously everyday, and prepare monthly reading records.
- The monthly reading records of M2 are then cross-checked with the reading records of M1 by the project owner.
- After checking the readings, the sales receipts are issued in according with the readings of the M1 and M2.

※ The Organizational Structure, Role and Responsibility

Overall responsibility for monitoring and carrying out the monitoring following this monitoring plan lies with the project owner. And the Beijing Changjiang River International Holding had advised the

³ The cut-off time is 24:00 in the cut off-date. As for the cut-off date each month, it has been regulated on around 24th of each month, but for the detailed date, it is usually determined by the availability of the Grid Company. However, once the cut-off date is chosen, the project owner could be informed in advance.

删除的内容: a

删除的内容: This

删除的内容: This meter is owned, operated and maintained by the grid company. And a check bidirectional meter (M2) is also installed on the project site in order to cross check the record data of the M1. This check meter is owned, operated and maintained by the project owner.

删除的内容: Main

删除的内容: Main Check

删除的内容: The grid company read m

删除的内容: ain m

删除的内容: and

删除的内容: , and then supply sale receipts to the Project owner.

删除的内容: .

删除的内容: -

删除的内容: and the sale receipts

project developer on how to perform the monitoring work. The staffs who were responsible for electricity meter readings and recording, and who were responsible for auditing the metered data had been trained according to the CDM requirements.

※ Emergency Procedures

If any error is identified, the project company shall inform the grid company of the error. Then necessary calibration and/or repair are required.

After processing error, the project owner must prepare a report/explanation regarding the emergency to explain to DOE that the handling method is reasonable.

SECTION D. Data and parameters

D.1. Data and parameters determined at registration and not monitored during the monitoring period, including default values and factors

Data / Parameter:	EF _y
Data unit:	tCO ₂ /MWh
Description:	Combined margin CO ₂ emission factor for the NCPG
Source of data used:	Calculated according to the procedure outlined in B.6.1 of the registered PDD
Value(s) :	1.0548
Indicate what the data are used for (Baseline/ Project/ Leakage emission calculations)	Baseline emission calculation
Additional comment:	Not applicable

D.2. Data and parameters monitored

In order to calculate emission of baseline, the electricity supplied by the proposed project to the NCPG (EG_{out,y}) and the electricity purchased from NCPG by the proposed project (EG_{in,y}) are monitored, and according to these two data, the net power supplied to the grid by the proposed project (EG_y) can be calculated as $EG_y = EG_{out,y} - EG_{in,y}$.

Data / Parameter:	EG _{out,y}
Data unit:	MWh
Description:	Electricity supplied to SGPG within NCPG by the proposed project
Measured /Calculated /Default:	Measured continuously
Source of data:	Meter measured continuously and reported on a monthly basis
Value(s) of monitored parameter:	The actual power supplied to the grid by the project is 89,809.28MWh from 25/12/2010 to 24/12/2011. The detailed data are provided in Table 1.
Indicate what the data are used for (Baseline/ Project/ Leakage emission calculations)	The data of 89,809.28MWh is used for baseline emissions calculation
Monitoring equipment (type, accuracy class, serial number, calibration frequency, date of last calibration, validity)	The electricity is monitored continuously through the bidirectional meter M1 and recorded monthly <u>installed in the Fengtai substation</u> by the Grid company. <u>And the meter M2 is monitored and recorded by the project owner at the project site and then crosschecked the recorded readings of the M1.</u> Detailed information refers to the following Table.

删除的内容: ,

删除的内容: a

删除的内容: owner

删除的内容: crosschecks

删除的内容: on the meter M2 at the project site

	Meter	Accuracy	Meter No.	Calibration Period		Calibration frequency
				Date of Calibration	Validity	
	M1	0.5S	20070808020043	07/06/2010	Yes	Yearly
				04/06/2011	Yes	
	M2	0.5S	09100170220042	07/06/2010	Yes	Yearly
04/06/2011				Yes		
(Note: These meters were checked and calibrated by the Weifang Power Company Meter Measuring Centre.).						
Measuring/ Reading/ Recording frequency:	Measure continuously and reported on a monthly basis					
Calculation method (if applicable):	The reading of meter M2 is monitored continuously and recorded monthly <u>by the project owner</u> , and then cross-checked with the reading of meter M1 installed and owned by the grid company. The conservative value is used for emission reductions calculation					
QA/QC procedures applied:	Meters have been calibrated annually. Data measured by meters are double checked by sales receipt					

带格式的: 右 -0.63 字符

Data / Parameter:	EG _{in,y}																								
Data unit:	MWh																								
Description:	Electricity purchased from SGPG within NCPG by the proposed project																								
Measured /Calculated /Default:	Measured continuously																								
Source of data:	Meter measured continuously and reported on a monthly basis																								
Value(s) of monitored parameter:	The actual power imported from the grid is 304.48MWh from 25/12/2010 to 24/12/2011. The detailed data are provided in Table 1.																								
Indicate what the data are used for (Baseline/ Project/ Leakage emission calculations)	The data of 304.48MWh is used for baseline emissions calculation																								
Monitoring equipment (type, accuracy class, serial number, calibration frequency, date of last calibration, validity)	<p>The electricity is monitored continuously through the bidirectional meter M1 and recorded monthly <u>installed in the Fengtai substation</u> by the Grid company. <u>And a meter M2 is monitored and recorded by the project owner at the project site and then crosschecked the recorded readings of the M1.</u> Detailed information refers to the following Table.</p> <table><tr><th rowspan="2">Meter</th><th rowspan="2">Accuracy</th><th rowspan="2">Meter No.</th><th colspan="2">Calibration Period</th><th rowspan="2">Calibration frequency</th></tr><tr><th>Date of Calibration</th><th>Validity</th></tr><tr><td rowspan="2">M1</td><td rowspan="2">0.5S</td><td rowspan="2">20070808020043</td><td>07/06/2010</td><td>Yes</td><td rowspan="2">Yearly</td></tr><tr><td>04/06/2011</td><td>Yes</td></tr><tr><td rowspan="2">M2</td><td rowspan="2">0.5S</td><td rowspan="2">09100170220042</td><td>07/06/2010</td><td>Yes</td><td rowspan="2">Yearly</td></tr><tr><td>04/06/2011</td><td>Yes</td></tr></table> <p>(Note: These meters were checked and calibrated by the Weifang Power Company Meter Measuring Centre.)</p>	Meter	Accuracy	Meter No.	Calibration Period		Calibration frequency	Date of Calibration	Validity	M1	0.5S	20070808020043	07/06/2010	Yes	Yearly	04/06/2011	Yes	M2	0.5S	09100170220042	07/06/2010	Yes	Yearly	04/06/2011	Yes
Meter	Accuracy				Meter No.	Calibration Period		Calibration frequency																	
		Date of Calibration	Validity																						
M1	0.5S	20070808020043	07/06/2010	Yes	Yearly																				
			04/06/2011	Yes																					
M2	0.5S	09100170220042	07/06/2010	Yes	Yearly																				
			04/06/2011	Yes																					
Measuring/ Reading/ Recording frequency:	Measure continuously and reported on a monthly basis																								
Calculation method (if applicable):	The reading of meter M2 is monitored continuously and recorded monthly <u>by the project owner</u> , and then cross-checked with the reading of meter M1 installed and owned by the grid company. The conservative value is used for emission reductions calculation																								
QA/QC procedures applied:	Meters have been calibrated annually. Data measured by meters are double checked by sales receipt																								

删除的内容: ,

删除的内容: a

删除的内容: crosschecks

删除的内容: on the meter

删除的内容: 2 at the project site

带格式的: 右 -0.63 字符

SECTION E. Emission reductions calculation

E.1. Baseline emissions calculation

>>

Baseline emissions are calculated with baseline emission factor (EF_y) and electricity supplied by the Project to the grid (EG_y), as follows:

$$BE_y = EG_y \cdot EF_y = (EG_{out,y} - EG_{in,y}) \cdot 1.0548$$

where

EF_y is the emission factor in year y; the emission factor is determined ex-ante.

EG_y is the net power supplied to the grid by the proposed project in year y which is calculated as $EG_y = EG_{out,y} - EG_{in,y}$.

The following table 1 provides the calculation of the baseline emissions during the monitoring period.

Table 1 Baseline emissions during the monitoring period

带格式表格

Monitoring period	EG _{out, y} (MWh)				EG _{in, y} (MWh)				EG _y (MWh)	EF _{CM} (tCO ₂ e/MWh)	BE _y (tCO ₂)
	Readings from reading records of M2	Readings from reading records of M1	Readings from sales receipts	Conservative data applied	Readings from reading records of M2	Readings from reading records of M1	Readings from sales receipts	Conservative data applied			
	A1	A2	A3	A=Min(A1,A2,A3)	B1	B2	B3	B=Max(B1,B2,B3)			
25/12/2010-24/01/2011	10,373.44	10,310.08	10,310.08	10,310.08	23.69	24.64	24.64	24.64	10,285.44	1.0548	10,849
25/01/2011-22/02/2011	4,161.52	4,143.04	4,143.04	4,143.04	50.81	52.80	52.80	52.80	4,090.24	1.0548	4,314
23/02/2011-26/03/2011	11,215.60	11,142.56	11,142.56	11,142.56	14.81	15.84	15.84	15.84	11,126.72	1.0548	11,736
27/03/2011-25/04/2011	10,984.16	10,901.44	10,901.44	10,901.44	11.89	12.32	12.32	12.32	10,889.12	1.0548	11,486
26/04/2011-24/05/2011	10,474.64	10,422.72	10,422.72	10,422.72	10.01	10.56	10.56	10.56	10,412.16	1.0548	10,983
25/05/2011-23/06/2011	7,018.00	6,985.44	6,985.44	6,985.44	14.81	15.84	15.84	15.84	6,969.60	1.0548	7,352
24/06/2011-24/07/2011	5,699.76	5,670.72	5,670.72	5,670.72	23.69	24.64	24.64	24.64	5,646.08	1.0548	5,955
25/07/2011-25/08/2011	4,753.76	4,739.68	4,739.68	4,739.68	35.95	36.96	36.96	36.96	4,702.72	1.0548	4,960
26/08/2011- 23/09/2011	6,082.56	6,019.20	6,019.20	6,019.20	25.36	26.4	26.4	26.40	5,992.80	1.0548	6,321
24/09/2011- 24/10/2011	5,040.72	5,024.80	5,024.80	5,024.80	23.69	24.64	24.64	24.64	5,000.16	1.0548	5,274
25/10/2011- 23/11/2011	6,121.28	6,086.08	6,086.08	6,086.08	27.26	28.16	28.16	28.16	6,057.92	1.0548	6,390
24/11/2011- 24/12/2011	8,425.12	8,363.52	8,363.52	8,363.52	30.88	31.68	31.68	31.68	8,331.84	1.0548	8,788
Total	90,350.56	89,809.28	89,809.28	89,809.28	292.85	304.48	304.48	304.48	89,504.80		94,409

带格式的：右 0 字符

删除的内容：Conservation

删除的内容：Conservation

删除的内容：Readings from reading records of M1 ... [1]

删除的内容：Readings from reading records of M1 ... [2]

删除的内容：A1 ... [3]

删除的内容：10,310.08 ... [4]

删除的内容：4,143.04 ... [5]

删除的内容：11,142.56 ... [6]

删除的内容：10,901.44 ... [7]

删除的内容：10,422.72 ... [8]

删除的内容：6,985.44 ... [9]

删除的内容：5,670.72 ... [10]

删除的内容：4,739.68 ... [11]

删除的内容：6,019.20 ... [12]

删除的内容：5,024.80 ... [13]

删除的内容：6,086.08 ... [14]

删除的内容：8,363.52 ... [15]

删除的内容：89,809.28 ... [16]

E.2. Project emissions calculation

>>

As per methodology and the registered PDD, there are no expected project emissions related to the generation of electricity, as generation is based on a renewable resource of wind. Therefore, the project emission (PE_y) is zero, $PE_y=0$.

E.3. Leakage calculation

>>

According to methodology, as a newly built wind power plant, there is no energy generating equipment be transferred from another activity and no existing equipment be transferred to another activity involved in the project activities. Therefore, the leakage is not to be considered.

E.4. Emission reductions calculation / table

>>

Therefore, according to the methodology ACM0002 (version 09), the emission reduction shall be calculated as follows:

$$ER_y = BE_y - PE_y - L_y = BE_y - 0 - 0 = BE_y = EF_y \cdot EG_y = (EG_{out,y} - EG_{in,y}) \cdot EF_y = 1.0548 \cdot EG_y$$

Below provides the calculation of the emission reduction in the monitoring period:

Table 2: Calculation of the emission reduction during the monitoring period

Monitoring period	BE_y (tCO ₂)	PE_y (tCO ₂)	L_y (tCO ₂)	ER_y (tCO ₂)
25/12/2010-24/01/2011	10,849	0	0	10,849
25/01/2011-22/02/2011	4,314	0	0	4,314
23/02/2011-26/03/2011	11,736	0	0	11,736
27/03/2011-25/04/2011	11,486	0	0	11,486
26/04/2011-24/05/2011	10,983	0	0	10,983
25/05/2011-23/06/2011	7,352	0	0	7,352
24/06/2011-24/07/2011	5,955	0	0	5,955
25/07/2011-25/08/2011	4,960	0	0	4,960
26/08/2011- 23/09/2011	6,321	0	0	6,321
24/09/2011- 24/10/2011	5,274	0	0	5,274
25/10/2011- 23/11/2011	6,390	0	0	6,390
24/11/2011- 24/12/2011	8,788	0	0	8,788
Total	94,409	0	0	94,409

E.5. Comparison of actual emission reductions with estimates in the CDM-PDD

>>

Item	Values applied in ex-ante calculation of the registered CDM-PDD	Actual values reached during the monitoring period
Emission reductions (tCO ₂ e)	The annual estimated emission reduction is 101,765 tCO ₂ in this monitoring period based on the registered PDD	The actual emission reduction is 94,409tCO ₂ during this monitoring period

E.6. Remarks on difference from estimated value in the PDD

>>

Not applicable (the actual emission reduction is less than the emission reduction expected in the PDD.)