



**Monitoring report form for CDM project activity
(Version 06.0)**

MONITORING REPORT

Title of the project activity	Embralixo/Araúna – Bragança Landfill Gas Project	
UNFCCC reference number of the project activity	1179	
Version number of the PDD applicable to this monitoring report	8.0	
Version number of this monitoring report	1.0	
Completion date of this monitoring report	14/06/2018	
Monitoring period number	#4	
Duration of this monitoring period	01/01/2015 – 18/06/2017	
Monitoring report number for this monitoring report	Not applicable.	
Project participants	Embralixo – Empresa Bragantina de Varrição e Coleta de Lixo Ltda. Araúna Participações e Investimentos Ltda.	
Host Party	Brazil	
Sectoral scopes	13 - Waste handling and disposal	
Applied methodologies and standardized baselines	ACM0001, version 18.0 - Flaring or use of landfill gas	
Amount of GHG emission reductions or net anthropogenic GHG removals achieved by the project activity in this monitoring period	Amount achieved before 1 January 2013	Amount achieved from 1 January 2013
	-	0 tCO ₂ e
Amount of GHG emission reductions or net anthropogenic GHG removals estimated ex ante for this monitoring period in the PDD	109,967 tCO ₂ e	

SECTION A. Description of project activity

A.1. General description of project activity

>>

The CDM project activity “Embralixo/Araúna – Bragança Landfill Gas Project” is implemented at the Bragança landfill. During the considered monitoring period, the project activity promoted real, measurable and permanent abatement of greenhouse gas (GHG) emissions through collection and destruction (through combustion in high temperature enclosed flares) of landfill gas (LFG) that is generated at this landfill.

The Bragança landfill is operated by the solid waste management company and host-country project participant Embralixo – Empresa Bragantina de Varrição e Coleta de Lixo Ltda. The Bragança landfill was inaugurated in 1990 and has employed *state-of-the-art* waste landfilling technics and operation management. In the absence of the CDM project activity (that was commissioned in 2007), no efficient management of LFG would occur.

LFG (which is rich in methane) is generated at the Bragança landfill as a result of anaerobic decomposition of municipal solid waste (MSW) historically disposed at the landfill. Until the end of the monitoring period from 01/01/2015 to 18/06/2017, the project activity encompassed the following components/infrastructure:

- (i) Capturing of LFG through a set of LFG collecting wells that are interconnected through a LFG collection pipeline network
- (ii) Destruction of all collected LFG (which is collected by the LFG collecting wells and transported through the LFG collection pipeline network) by controlled combustion (in a high temperature enclosed flare installed in a LFG destruction facility).

As indicated in the registered PDD valid for the 2nd 7-year renewable crediting period of the project activity (hereafter denominated as “PDD”), the project design does not encompass any utilization of LFG. The project activity was implemented and until the end of the considered monitoring period was operated without having any share of collected LFG being sold as gaseous fuel to a local industry (in order to be combusted in boilers) or being utilized as fuel to power a thermal desorption unit or an electricity generation facility. During the monitoring period from 01/01/2015 to 18/06/2017, no collected LFG was thus utilized as gaseous fuel for electricity generation, as gaseous fuel in boilers or for any purpose other than being destroyed through combustion in the installed high temperature enclosed flares.

The amount and quality of collected LFG which is sent to the flare have been continuously measured, recorded and reported along the considered monitoring period. As also established in the project’s monitoring procedure valid for the 2nd 7-year crediting period as per the PDD, the status/conditions of the high temperature enclosed flare and its compliance with operational requirements (as established by the flare equipment manufacturer) are also monitored.

A.2. Location of project activity

>>

The landfill where the project activity is implemented serves as a Municipal Solid Waste (MSW) disposal site for the city of Bragança Paulista and other cities in the region and it is named Bragança landfill. This landfill is located in the Estrada Municipal do Campo Novo / no number – Bragança Paulista – São Paulo, Brazil

The exact geographic coordinates of the project site (in decimal and in Degree, Minute, Second (DMS) formats) are as follows:

Format	Latitude	Longitude
DMS	23° 14' 51" S	45° 52' 03" W
Decimal	-23.2475	-45.8675

The following images show the location of the project activity.



Figure 1 - Project's location within Brazil
(as visible in March 2017 by using Google Earth PC application)

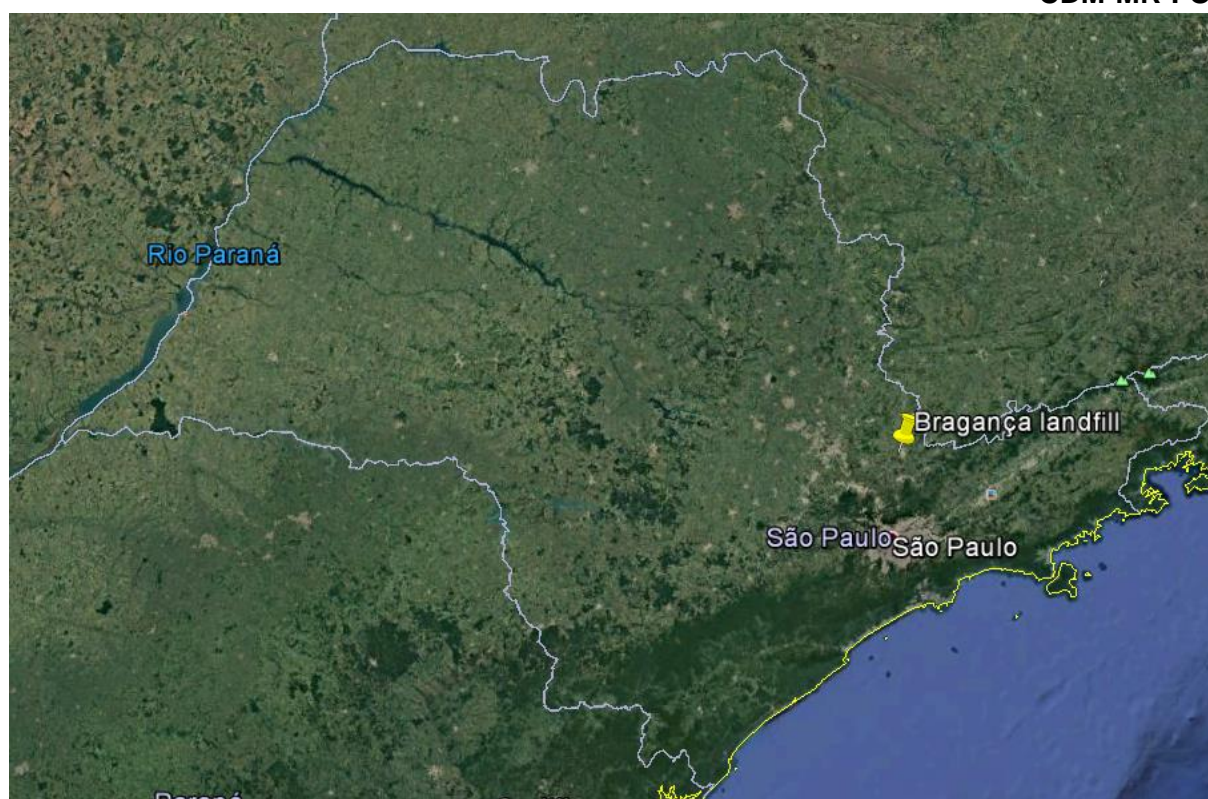


Figure 2 - Project's location within São Paulo State
(as visible in March 2017 by using Google Earth PC application)

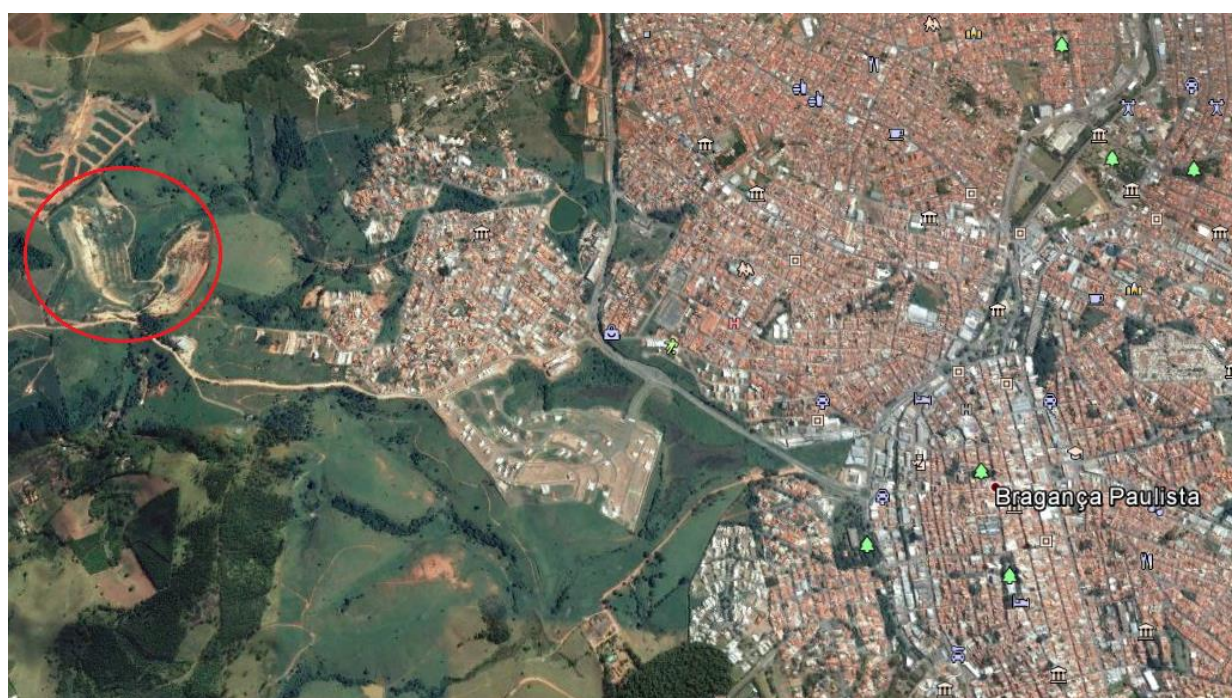


Figure 3 - Project's location within the city of Bragança Paulista
(as visible in March 2017 by using Google Earth PC application)

A.3. Parties and project participants

Parties involved	Project participants	Indicate if the Party involved wishes to be considered as project participant (Yes/No)
Brazil (host)	Embralixo – Empresa Bragantina de Varricao e Coleta de Lixo Ltda (Private Entity)	No
Brazil (host)	Arauna Participacoes e Investimentos Ltda (Private Entity)	No

A.4. Reference to applied methodologies and standardized baselines

>>

The project activity applies the following large-scale CDM baseline and monitoring methodology:

- ACM0001 – “*Flaring or use of landfill gas*” (version 18.0) (https://cdm.unfccc.int/filestorage/0/X/2/0X2IE6B1PJDLKMWN89AZGTFUHR3VYS/EB94_repan04_ACM0001.pdf?t=TGx8b3J0NmdrfDAsr0FIlp4m3kJdaDUB-j3F)

For the considered monitoring period, as also established in the PDD, the following methodological tools are also applied¹:

- “Baseline, project and/or leakage emissions from electricity consumption and monitoring of electricity generation” (version 02.0, EB 87) (<https://cdm.unfccc.int/methodologies/PAmethodologies/tools/am-tool-05-v2.0.pdf>) (<https://cdm.unfccc.int/methodologies/PAmethodologies/tools/am-tool-03-v2.0.pdf>)
- “Project emissions from flaring” (version 02.0.0, EB 68) (<https://cdm.unfccc.int/methodologies/PAmethodologies/tools/am-tool-06-v2.0.pdf>)
- “Tool to determine the mass flow of a greenhouse gas in a gaseous stream” (version 03.0, EB 87) (<https://cdm.unfccc.int/methodologies/PAmethodologies/tools/am-tool-08-v3.0.pdf>)
- “Tool to calculate the emission factor for an electricity system” (version 05.0, EB 87) (<https://cdm.unfccc.int/methodologies/PAmethodologies/tools/am-tool-07-v5.0.pdf>)

A.5. Crediting period type and duration

>>

2nd 7-year renewable crediting period from 01/01/2015 to 31/12/2021.

SECTION B. Implementation of project activity**B.1. Description of implemented project activity**

>>

During the considered monitoring period, the project activity encompassed the operation of the following equipment:

- LFG gas extraction system composed of 27 vertical extraction wells, of which 22 were under regular operation, connected by HDPE pipes.

¹ The registered PDD also refer to the methodological tool “Emissions from solid waste disposal sites” (version 08.0, EB94). However, it is crucial to note that, as outlined in the PDD, applicable guidance of this methodological tools is only applied in the context of ex-ante estimation of emission reductions to be achieved by the project activity during the 2nd 7-year crediting period. This methodological tool is thus not applied for the ex-post determination of emission reductions achieved by the project activity.

- 1 centrifugal blower with a 1,500 Nm³/h capacity,
- 1 LFG condensation traps (for separating undesirable liquids in the collected LFG (leachate and condensate))
- LFG monitoring equipment/instruments:
 - o 1 LFG mass flow meter,
 - o 1 LFG temperature sensor,
 - o 1 LFG pressure sensor,
 - o 1 CH₄ content gas analyzer,
 - o 1 thermocouple (to measure temperature in the exhaust gases of the flare)),
 - o 1 UV flame detectors (to monitor the operational and flame status of the installed flare)
- One high temperature enclosed flare (designed and supplied by Brasmetano Ind. e Com. Ltda.). The flare has a declared maximum LFG flow operational capacity of 1,500 Nm³/h.

Further details about monitoring instruments/equipment under operation during the considered monitoring period are included in Section D.2.

In general, during the considered monitoring period, the project activity was implemented and has operated under full conformance with the previously conceived project design (as described in the PDD).

During the considered monitoring period, the project activity faced events when it became temporarily out of operation due to different reasons (occurred temporarily interruption in the supply of grid-sourced electricity, occurred previously planned and unplanned equipment maintenance/repair events, occurred performance of regular calibration events, events of drainage of condensate from the project's LFG pipeline, identification of unexpected problems in the PLC panel, data communication problems, etc.).

It is relevant to note that, during the period from January 2014 until August 2017, the project activity operated with a very reduced capacity. Moreover, during the period from January 2014 to August 2017, no data from the LFG related monitoring instruments were recorded/reported by the project's data acquisition system. The project's monitoring system finally resumed its regular operations on 04/08/2017.

Since the project's operation start in January 2008 until the end of the considered monitoring period, no backup captive off-grid electricity generator was ever used to meet the project's electricity demand during eventual interruptions of the supply of grid-sourced electricity to the project activity.

B.2. Post-registration changes

B.2.1. Temporary deviations from the registered monitoring plan, applied methodologies or standardized baselines

>>

Not applicable for the considered monitoring period. There are no temporary deviation from the registered monitoring plan or applied methodology encompassed by the considered monitoring period and/or previously approved by the CDM-EB.

B.2.2. Corrections

>>

Not applicable for the considered monitoring period. There are no Corrections (in information that do not affect the project design) encompassed by the considered monitoring period and/or previously approved by the CDM-EB.

B.2.3. Changes to the start date of the crediting period

>>

Not applicable for the considered and/or previous monitoring periods. There are no changes to start date of the crediting period encompassed by the considered monitoring period and/or previously approved by the CDM-EB.

B.2.4. Inclusion of monitoring plan

>>

Not applicable for the considered and/or previous monitoring periods. There is no inclusion of monitoring plan (and/or applicable methodological tools) encompassed by the considered monitoring period and/or previously approved by the CDM-EB as being applicable for the considered monitoring period.

B.2.5. Permanent changes to the registered monitoring plan, or permanent deviation of monitoring from the applied methodologies, standardized baselines, or other applied standards or tools

>>

Not applicable for the considered monitoring period. There are no permanent changes to the registered monitoring plan, or permanent deviation of monitoring from the applied CDM baseline and monitoring methodology and/or applicable methodological tools encompassed by the considered monitoring period and/or previously approved by the CDM-EB.

B.2.6. Changes to project design

>>

Not applicable for the considered monitoring period. There are no permanent changes to the design of the project activity encompassed by the considered monitoring period and/or previously approved by the CDM-EB.

SECTION C. Description of monitoring system

>>

C.1. INSTRUMENTATION

Figure shows a schematic instrumentation diagram of the project's monitoring system as per the configuration available during the monitoring period.

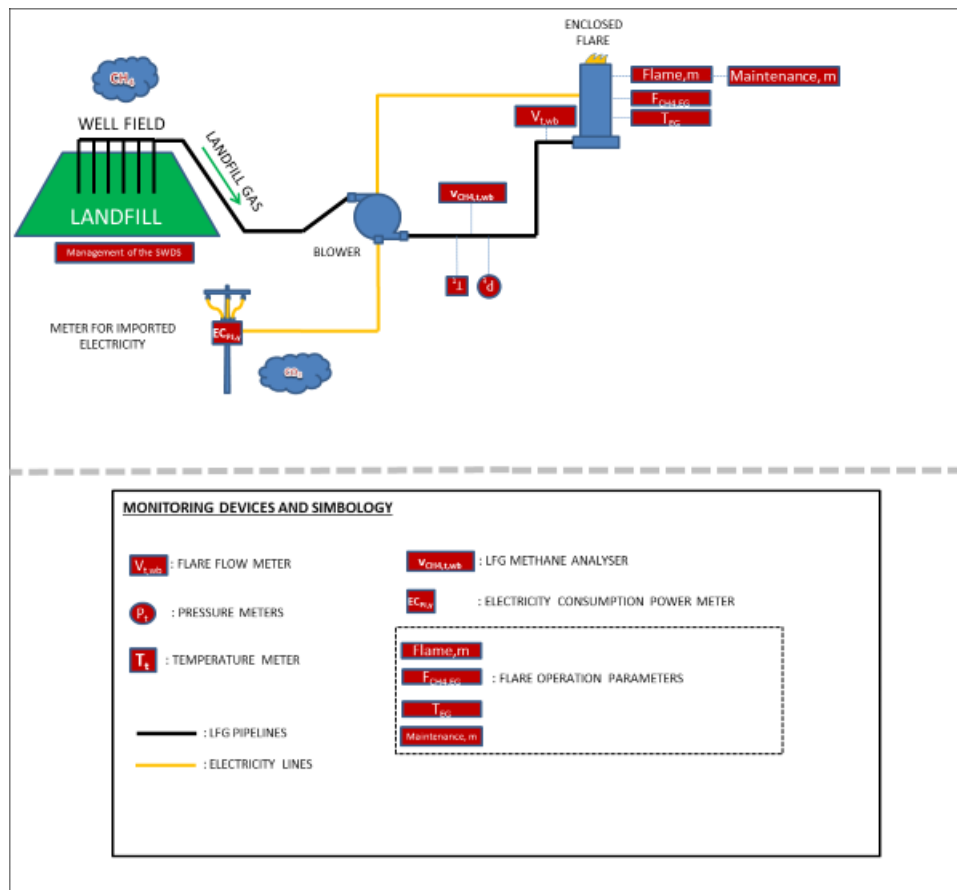


Figure 4: Schematic instrumentation diagram of the project's monitoring system valid for the considered monitoring period

As part of the project activity, the following monitoring instruments/equipment are installed along the main LFG distribution pipeline (in its final section) within the project's LFG destruction facility (between the installed centrifugal blowers and the enclosed flare):

- One flow meter of thermal mass type. This measurement unit measures the flow of LFG collected by the project activity which is sent to the installed flare for combustion.
- One LFG pressure sensor. This instrument measures LFG pressure in the section between the centrifugal blowers and the high temperature enclosed flare in the LFG collection pipeline.
- One LFG temperature sensor. This instrument measures the LFG temperature in the LFG collection pipeline in the section between the centrifugal blowers and the high temperature enclosed.
- One continuous CH_4 content gas analyzer unit. This equipment provides continuous measurement of methane fraction in collected LFG. While the project's LFG collection process ensures that most of the humidity of the collected LFG is removed by condensation (in available condensation removal traps) prior of having collected LFG passing through the installed LFG flow meters and the installed CH_4 content gas analyzer unit, flow of collected LFG being sent to the flare and CH_4 fraction of collected LFG can thus be regarded as measured under the same basis/conditions in terms of moisture.
- One thermocouple that measure the temperature in the exhaust gas of the flare ($T_{EG,m}$). Such measurements are considered in order to assure the operation of flare as per the operation conditions defined by the flare manufacturer. The thermocouple is located in the upper section of the installed flare and is only used to monitor the flare temperature from

an operational point of view and in order to ensure that high flare combustion efficiency is achieved.

- One UV flame detector. For every minute that flame is detected in the flare, its operational status is considered as “On” and emission reductions are thus accounted for such given minute.

The electricity demand of the project activity has been entirely met by imports of grid-sourced electricity. Consumption of grid-sourced electricity during the considered monitoring period was measured by an installed electricity meter.

C.2. DATA ACQUISITION, STORAGE AND MANAGEMENT SYSTEM

As part of the monitoring process for the project activity, all continuous measurements of LFG related monitoring parameters (including measurements of temperature of exhaust gas of the flare and status of the flare) were recorded/reported every minute during the considered monitoring period in an installed data acquisition unit and archiving solution (database) designed and configured by Araúna Participações e Investimentos Ltda.

As part of the operation of the project activity, monitoring data has been recorded by the utilized data acquisition and archiving infrastructure (database). Recorded LFG related monitoring data (+ measurement records for temperature of exhaust gas of the flare, status of the flare, and operational status of the installed engine-generator set consuming LFG) are regarded as “raw data” for processing emission reduction calculations valid for the considered monitoring period. As part of the implemented monitoring procedure for the project activity, such “raw data” is exported into MS-Excel spreadsheet format for generating the emission reduction calculation spreadsheets which are enclosed to this Monitoring Report.

The project’s operational staff for the LFG destruction facility are trained for all related operation, maintenance and safety procedures. Related training certificates for operational staff were issued and are kept achieved. All relevant operational events (emergency, failures, maintenance, etc.) for the LFG destruction facility are registered in operation workbooks. All performed maintenance and/or repair events applicable for the critical pieces of equipment for both project components (flare, centrifugal blowers, CH₄ content gas analyzer unit, air compressor, engine-generator modular package sets, control systems, etc.) are also registered in the project’s operation workbooks.

Records and documented evidences for performed calibration events in monitoring instruments/equipment are also registered in workbooks. The calibration certificates and registries for all performed calibration events are also kept in files. Calibration procedures are performed in accordance with applicable recommendation and requirements as established by equipment manufacturers and are also under conformance with applicable CDM requirements. The project’s maintenance manual also includes related calibration procedures, requirements and instructions.

C.3. MANAGERIAL RESPONSIBILITIES

Operation of the whole project activity under compliance with all applicable CDM requirements is the responsibility of the CDM Operational Manager of Araúna Participações e Investimentos Ltda. The CDM Project Manager of Araúna Participações e Investimentos Ltda. (who directly reports to the vice-president of the organization), is in charge of all validation and verification related activities (including development of PDD, Monitoring Reports and supporting documentation). The CDM Operational Manager is assisted/supported by hired technical consultants from the hired CDM technical consultancy/advisory service company UniCarbo – Energia e Biogás Ltda. The CDM Project Manager is responsible for ensuring the correct application of the monitoring plan.

Under an operational perspective, the CDM operations manager and CDM supervisor are in charge of performing all field monitoring activities and ensuring appropriate monitoring data logging and recording (always with assistance/support from by hired technical consultants from UniCarbo – Energia e Biogás Ltda.). They are also responsible for the performance of related calibration events as well as all applicable planned or unplanned maintenance and repair events.

SECTION D. Data and parameters

D.1. Data and parameters fixed ex ante

Data/Parameter	OX_{top_layer}
Unit	Dimensionless
Description	Fraction of methane that would be oxidized in the top layer of the SWDS in the baseline
Source of data	Consistent with how oxidation is accounted for in the methodological tool “Emissions from solid waste disposal sites” (version 08.0)
Value(s) applied	0.1
Choice of data or measurement methods and procedures	Default value as per the applied CDM baseline and monitoring methodology ACM0001 - “Flaring or use of landfill gas” (version 18.0)
Purpose of data/parameter	Calculation of baseline emissions.
Additional comments	-

Data/Parameter	F_{CH4,BL,x-1}
Unit	tCH ₄ /yr
Description	Historical amount of methane in the LFG which is captured and destroyed in the year prior to the implementation of the project activity (2007).
Source of data	Measurements performed by Embralixo – Empresa Bragantina de Varrição e Coleta de Lixo Ltda. / Araúna Participações e Investimentos Ltda. (related to year 2007).
Value(s) applied	71.20
Choice of data or measurement methods and procedures	Selected value is as per historical measurements performed by Embralixo – Empresa Bragantina de Varrição e Coleta de Lixo Ltda. / Araúna Participações e Investimentos Ltda.
Purpose of data/parameter	Calculation of baseline emissions.
Additional comments	-

Data/Parameter	GWP_{CH4}
Unit	tCO ₂ e/tCH ₄
Description	Global Warming Potential of CH ₄
Source of data	<p>“Global Warming Potential for Given Time Horizon” in table 2.14 of the errata to the contribution of Working Group I to the Fourth Assessment Report of the Intergovernmental Panel on Climate Change, based on the effects of greenhouse gases over a 100-year time horizon. Available at: www.ipcc.ch/publications_and_data/ar4/wg1/en/ch2s2-10-2.html#table-2-14</p> <p>The applied value is also in accordance with the “Standard for application of the global warming potential to clean development mechanism project activities and programmes of activities for the second commitment period of the Kyoto Protocol”.</p>
Value(s) applied	25
Choice of data or measurement methods and procedures	-
Purpose of data/parameter	Calculation of baseline emissions.
Additional comments	The applied value shall be updated according to any future COP/MOP decisions and/or decision by the CDM-EB.

Data/Parameter	R_u
Unit	Pa.m ³ /kmol.K
Description	Universal ideal gases constant
Source of data	Default value as per the “Tool to determine the mass flow of a greenhouse gas in a gaseous stream” (version 02.0.0)
Value(s) applied	8,314
Choice of data or measurement methods and procedures	-
Purpose of data/parameter	Calculation of baseline emissions.
Additional comments	-

Data/Parameter	MM_k
Unit	kg/kmol
Description	Molecular mass of gas <i>k</i>

Source of data	Default values as per the “Tool to determine the mass flow of a greenhouse gas in a gaseous stream” (version 02.0.0)								
Value(s) applied	<p>For considered gases k that are greenhouse gases (GHGs), the values below are applied for MMi.</p> <p>As per the “Tool to determine the mass flow of a greenhouse gas in a gaseous stream”: <i>“The determination of the molecular mass of the gaseous stream ($MM_{t,db}$) requires measuring the volumetric fraction of all gases (k) in the considered gaseous stream. However as a simplification, only the volumetric fraction of gases k that are greenhouse gases and are considered in the emission reduction calculation in the underlying methodology must be monitored and the difference to 100% may be considered as pure nitrogen. The simplification is not acceptable if it is differently specified in the underlying methodology.</i></p> <p>ACM0001 (version 18.0) does not include any restriction to such simplification. Thus, only the volumetric fraction of gases that are greenhouse gases and are considered in related calculations (CH₄ in the particular case of the project activity) and the difference to 100% is just considered as pure nitrogen.</p> <table><tr><th>Compound</th><th>Structure</th><th>Molecular mass (kg/kmol)</th></tr><tr><td>Nitrogen</td><td>N₂</td><td>28.01</td></tr></table>			Compound	Structure	Molecular mass (kg/kmol)	Nitrogen	N ₂	28.01
Compound	Structure	Molecular mass (kg/kmol)							
Nitrogen	N ₂	28.01							
Choice of data or measurement methods and procedures	-								
Purpose of data/parameter	Calculation of baseline emissions.								
Additional comments	-								

Data/Parameter	MM _i								
Unit	kg/kmol								
Description	Molecular mass of greenhouse gas /								
Source of data	Default values as per the “Tool to determine the mass flow of a greenhouse gas in a gaseous stream” (version 02.0.0)								
Value(s) applied	The following values of molecular mass are applicable for CH ₄ (the only GHG which is considered): <table><tr><td>Compound</td><td>Structure</td><td>Molecular mass (kg/kmol)</td></tr><tr><td>Methane</td><td>CH₄</td><td>16.04</td></tr></table>			Compound	Structure	Molecular mass (kg/kmol)	Methane	CH ₄	16.04
Compound	Structure	Molecular mass (kg/kmol)							
Methane	CH ₄	16.04							
Choice of data or measurement methods and procedures	-								
Purpose of data/parameter	Calculation of baseline emissions.								
Additional comments	-								

Data/Parameter	P_n
Unit	Pa
Description	Total pressure at normal conditions
Source of data	Default value as per the “Tool to determine the mass flow of a greenhouse gas in a gaseous stream” (Version 02.0.0)
Value(s) applied	101,325
Choice of data or measurement methods and procedures	-
Purpose of data/parameter	Calculation of baseline emissions.
Additional comments	-

Data/Parameter	T_n
Unit	K
Description	Temperature at normal conditions
Source of data	Default value as per the “Tool to determine the mass flow of a greenhouse gas in a gaseous stream” (version 02.0.0)
Value(s) applied	273.15
Choice of data or measurement methods and procedures	-
Purpose of data/parameter	Calculation of baseline emissions.
Additional comments	-

Data/Parameter	MM_{H2O}
Unit	kg/kmol
Description	Molecular mass of water
Source of data	Default value as per the “Tool to determine the mass flow of a greenhouse gas in a gaseous stream” (version 02.0.0)
Value(s) applied	18.0152
Choice of data or measurement methods and procedures	-

Purpose of data/parameter	Calculation of baseline emissions.
Additional comments	-

Data/Parameter	TDL_{grid,y}
Unit	-
Description	Average technical transmission and distribution losses for providing electricity to the grid and for grid sourced electricity consumed by the project activity.
Source of data	Applicable default value as per the methodological tool “Baseline, project and/or leakage emissions from electricity consumption and monitoring of electricity generation”.
Value(s) applied	20%
Choice of data or measurement methods and procedures	-
Purpose of data/parameter	Calculation of project emissions (due to the consumption of grid-sourced electricity by the project activity).
Additional comments	-

Data/Parameter	W_{BM}
Unit	%
Description	Weighting of build margin emissions factor
Source of data	Applicable default value as per the “Tool to calculate the emission factor for an electricity system” (version 05.0)
Value(s) applied	0.75 (75%) during the 2 nd 7-year crediting period
Choice of data or measurement methods and procedures	The applicable value valid for 2 nd crediting period as per the “Tool to calculate the emission factor for an electricity system” (version 5.0) is selected.
Purpose of data/parameter	Calculation of project emissions (due to the consumption of grid-sourced electricity by the project activity).
Additional comments	-

Data/Parameter	W_{OM}
Unit	%
Description	Weighting of operating margin emissions factor
Source of data	Applicable default value as per the “Tool to calculate the emission factor for an electricity system” (version 05.0)
Value(s) applied	0.25 (25%) during the 2 nd 7-year crediting period
Choice of data or measurement methods and procedures	The applicable value for the 2 nd crediting period as per the “Tool to calculate the emission factor for an electricity system” (version 4.0) is selected.
Purpose of data/parameter	Calculation of project emissions (due to the consumption of grid-sourced electricity by the project activity).
Additional comments	-

Data/Parameter	EF_{grid,BM,y}
Unit	tCO ₂ /MWh
Description	Build margin CO ₂ emission factor in year y
Source of data	Data is ex-ante determined as per applicable guidance of the “Tool to calculate the emission factor for an electricity system” valid for 2 nd crediting period. The selected value valid for all years encompassed by the 2 nd 7-year crediting period is the value calculated by the DNA of Brazil and valid for year 2016 (EF _{grid,BM,2016}).
Value(s) applied	0.1581
Choice of data or measurement methods and procedures	Official value is determined/calculated by the DNA of Brazil. Values are made available online: http://www.mct.gov.br/index.php/content/view/74689.html
Purpose of data/parameter	Calculation of project emissions (due to the consumption of grid-sourced electricity by the project activity).
Additional comments	-

Data/Parameter	EF_{grid,OM-adj,y} = EF_{grid,OM,y}
Unit	tCO ₂ /MWh
Description	Operating margin CO ₂ emission factor in year y

Source of data	Data is ex-ante determined as per applicable guidance of the “Tool to calculate the emission factor for an electricity system” valid for 2 nd crediting period. The selected value valid for all years encompassed by the 2 nd 7-year crediting period is the 3-year generation-weighted average based on the most recent data public available (years of 2014, 2015 and 2016). Calculated annual official values are made available by the DNA of Brazil.
Value(s) applied	0.4979
Choice of data or measurement methods and procedures	Official value is determined/calculated by the DNA of Brazil. Values are made available online: http://www.mct.gov.br/index.php/content/view/363726.html
Purpose of data/parameter	Calculation of project emissions (due to the consumption of grid-sourced electricity by the project activity).
Additional comments	-

Data/Parameter	SPEC _{flare}															
Unit	°C (for temperature values) Nm ³ /h (for LFG flow values) Number of days (for maintenance schedule interval values)															
Description	Manufacturer's flare specifications for temperature, flow rate and maintenance schedule interval.															
Source of data	Flare manufacturer ²															
Value(s) applied	<div>The specifications of the installed flare are listed below:</div> <table><tr><th>SPEC_{flare}</th><th>Min.</th><th>Max.</th></tr><tr><td>Operational LFG flow (for continuous operation):</td><td>200 Nm³/h</td><td>1,500 Nm³/h</td></tr><tr><td>Required temperature of the exhaust gas of the flare (to ensure LFG destruction (combustion) under high CH₄ destruction efficiency):</td><td>500 °C</td><td>1,000 °C</td></tr><tr><td>Required minimum frequency for inspection and maintenance service (incl. inspection in the conditions of the flare isolation ceramics revetment material):</td><td colspan="2">Min. every year (min each 365 days)</td></tr><tr><td>Required/recommended minimum frequency for replacement of the flare isolation ceramics revetment material:</td><td colspan="2">After 10 years of regular and appropriate operation</td></tr></table>	SPEC _{flare}	Min.	Max.	Operational LFG flow (for continuous operation):	200 Nm ³ /h	1,500 Nm ³ /h	Required temperature of the exhaust gas of the flare (to ensure LFG destruction (combustion) under high CH ₄ destruction efficiency):	500 °C	1,000 °C	Required minimum frequency for inspection and maintenance service (incl. inspection in the conditions of the flare isolation ceramics revetment material):	Min. every year (min each 365 days)		Required/recommended minimum frequency for replacement of the flare isolation ceramics revetment material:	After 10 years of regular and appropriate operation	
SPEC _{flare}	Min.	Max.														
Operational LFG flow (for continuous operation):	200 Nm ³ /h	1,500 Nm ³ /h														
Required temperature of the exhaust gas of the flare (to ensure LFG destruction (combustion) under high CH ₄ destruction efficiency):	500 °C	1,000 °C														
Required minimum frequency for inspection and maintenance service (incl. inspection in the conditions of the flare isolation ceramics revetment material):	Min. every year (min each 365 days)															
Required/recommended minimum frequency for replacement of the flare isolation ceramics revetment material:	After 10 years of regular and appropriate operation															

² The manufacturer of the flare is “Brasmetano Ind. e Com. Ltda..”, which is a flaring equipment manufacturer based in Brazil.

Choice of data or measurement methods and procedures	As established by the methodological tool “Project emissions from flaring”, the flare specifications and operational + maintenance requirements (as set/recommended by the equipment manufacturer) are documented and considered for the ex-ante determination of applicable values for the parameter SPEC _{flare} . During the 2 nd 7-year crediting period, ex-ante selected data will be compared against monitored data related to the operation of the flares, including: a) Minimum and maximum monitoring records for data regarding inlet LFG flow rate, if necessary converted to flow rate at reference conditions or heat flux, (b) Minimum and maximum monitoring records for data of temperature in the exhaust gas of each individual high temperature enclosed flare; and (c) Duration in days of time periods between maintenance events for each individual high temperature enclosed flare.
Purpose of data/parameter	Calculation of baseline emissions ³ .
Additional comments	All flare specification and operation details/requirements are based on information provided by the equipment manufacturer.

³ As also highlighted in Section B.3, it is important to note that residual project emissions of CH₄ due to the combustion of LFG in the installed enclosed flare are considered in the context of the determination of baseline emissions (although ACM0001 (version 18.0) refers to the term “project emissions from flaring”).

Ex-ante determined parameters not used in the context of ex-post determination and calculation of emission reductions achieved by the project activity:

The following ex-ante determined parameters (that are also included in the PDD) are not used for the purpose of ex-post determination of baseline emissions and project emissions achieved by the project activity during the considered monitoring period:

- Efficiency of the LFG capture system that will be installed in the project activity (η_{PJ})
- Default value for model correction factor to account for model uncertainties (ϕ_{default})
- Oxidation factor (reflecting the amount of methane from the considered SWDS that is oxidized in the soil (or other material covering the waste)) (OX)
- Fraction of methane in the SWDS gas (volume fraction) (F)
- Fraction of degradable organic carbon (DOC) in MSW that decomposes in the considered SWDS ($\text{DOC}_{f,\text{default}}$)
- Methane correction factor ($\text{MCF}_{\text{default}}$)
- Fraction of degradable organic carbon in the waste type j (weight fraction) (DOC_j)
- Decay rate for the waste type j (k_j)
- Weight fraction of the waste type j (W_j)

As also outlined in the PDD, data for the above-listed parameters are used only in the context of ex-ante estimation of annual accumulated values for the “Amount of methane in the LFG which is destroyed or utilized by the project activity” ($F_{\text{CH}_4,PJ,y}$) (in the context of ex-ante estimation of emission reductions to be achieved by the project activity during the 2nd 7-year renewable crediting period). Due to that, details for the above-listed parameters are not included in this Section as they are not relevant in the context of determination of emission reductions achieved by the project activity during the considered monitoring period. Relevant details for such not reported parameters are included in Section B.6.2 of the PDD.

D.2. Data and parameters monitored

Data/Parameter	Management of SWDS
Unit	Dimensionless
Description	Management of the SWDS

Measured/calculated/default	<p>As per the adopted monitoring procedure for the project activity, the management of the Bragança landfill is yearly compared against the previously conceived original construction and operational design for the Bragança landfill in order to confirm that the overall management and operation for the landfill (including relevant aspects related to landfilling practice) were not deliberately modified with the unique aim to intentionally increase the generation of methane at the landfill. By performing the checking annually, it is monitored whether any practice aiming to increase methane generation in the landfill has occurred or promoted. As required by ACM0001 (version 18.0), any change in the management of the Bragança landfill after the implementation of the project activity should be justified by referring to applicable technical or regulatory specifications.</p>
Source of data	<p>An initial technical evaluation was performed by the independent 3rd party engineering company Carrer Engenharia. The findings for the performed evaluations are reported in a declaration document issued by such company that is dated 12/12/2017. This initial evaluation covers the period from 01/01/2008 (date when the project activity started to operate) to 12/12/2017 (issuance date of the declaration document for the performed evaluation).</p> <p>As part of the performed evaluation, the current configuration and operational conditions of the Bragança landfill were compared against the previously conceived design and operational conditions of the landfill prior of the occurred implementation of the project activity on the basis of different sources and assessments including inter alia:</p> <ul style="list-style-type: none"> - The original design documents of the landfill (as described in the documentation required for all phases of the environmental licensing and operational permitting for the Bragança landfill); - Applicable local or national regulations;

Value(s) of monitored parameter	<p>As outlined in the issued internal technical evaluation/declaration reports dated 12/12/2017 and 06/04/2018, the previously conceived original design of the Bragança landfill (dated prior to the implementation of the project activity) is confirmed not to being deliberately modified during the period from 01/01/2008 (date when the project activity started to operate) until 06/04/2018 (date of issuance of the report for the latest performed technical evaluation). Furthermore, no modification in the previously conceived original design of the Bragança landfill has occurred or was promoted during the period. The issued technical reports confirm that no practice to increase methane generation at the Bragança landfill have occurred or have been promoted (when compared to management and MSW landfilling practices prior to implementation of the project activity). Aspects, conditions and circumstances related to management of the landfill (e.g. waste disposal, waste covering, waste compacting, management of leachate, draining of rainwater, etc.) were not changed with an aim to increase methane generation on site.</p> <p>It is relevant to note that MSW management business (collection and disposal of MSW) in Brazil (and in most of the developing countries) has its own economics, dynamics, politics and related regulations. That makes MSW disposal activity for the Bragança landfill and other similar landfills in Brazil completely independent from the CDM mechanism and/or revenues of commercialization of CERs generated by project-based destruction of methane in landfills.</p> <p>In the particular case of the Bragança landfill, it is important to note that this landfill was designed and has operated inter alia as per terms and conditions for solid waste disposal contracts established with the different municipalities and private companies. The design and operation of the landfill is also under conformance with terms and conditions for the environmental licensing that were previously defined and are regularly monitored by the competent environmental authority from São Paulo State (CETESB).</p> <p>Currently, there is still no climate change of waste management policy in Brazil which would provide an incentive or a mandate to have MSW being disposed in landfills with better/improved LFG collection / destruction systems (such as the project's LFG collection and destruction system currently implemented at the Bragança landfill).</p>
Monitoring equipment	Not applicable. No measuring equipment is used for monitoring management of the Bragança landfill.
Measuring/reading/recording frequency	Annual checking is performed.
Calculation method (if applicable)	Not applicable.
QA/QC procedures	Procedures related to collection/gathering, recording, storing and reporting of monitoring data for the project activity are performed at Embralixo – Empresa Bragantina de Varrição e Coleta de Lixo Ltda. in accordance with detailed working instructions that are included in the company's quality management and control (QA/QC) and environmental management system (EMS).
Purpose of data/parameter	Calculation of baseline emissions

Additional comments	As required by ACM0001 (version 18.0), any change in the management of the landfill after the implementation of the project activity will be justified by referring to technical or regulatory specifications and impacts of such changes in the determination of baseline emissions should in this case be taken into account appropriately. Such monitoring requirement will be used for the determination/confirmation of baseline emissions and/or confirmation of the project's implementation as described in the PDD (in terms of operation and management conditions of the landfill from which LFG is combusted).
---------------------	--

Data/Parameter	$V_{t,wb}$
Unit	m ³ wet gas/h
Description	Volumetric flow of LFG stream in time interval t on a wet basis.
Measured/calculated/default	Continuously measured by a LFG flow meter.
Source of data	Measured as part of the operation of the project activity by applying appropriate monitoring instruments (flow meter) (with recordable electronic signal).
Value(s) of monitored parameter	The monthly emission reduction calculation spreadsheets (that are enclosed to this Monitoring Report) include all records of measurement data of LFG flow sent to the installed high temperature enclosed flare during the considered monitoring period. Measurement data is recorded and reported with an every-minute frequency. -
Monitoring equipment	Measurements are performed by a LFG flow meter that is installed in an independent section of the LFG pipeline located between the centrifugal blowers and the installed high temperature enclosed flare, <i>Specifications and calibration details for the installed LFG flow meter:</i> <ul style="list-style-type: none"> - Manufacturer: Contech Indústria e Comércio de Equipamentos Eletrônicos Ltda. - Model: FT-2 - Accuracy: +/- 1% - Serial Number: 1306018 - Calibration frequency (as per the application of the monitoring plan and recommendations from the equipment manufacturer): Calibration events are performed every 2 years - Dates for performed calibration events valid for the considered monitoring period: 26/04/2017 - Validity of the performed calibration events: The calibration event dated 26/04/2017 is valid until 25/04/2019 (2 years) - Entity/company responsible for performing the calibration events: Souza Engenharia
Measuring/reading/recording frequency	Continuous measurements are recorded and reported with an every-minute frequency.
Calculation method (if applicable)	Not applicable.

QA/QC procedures	<p>Monitoring equipment/instruments are calibrated and maintained as per instrument specifications and/or recommendations of manufacturer.</p> <p>Procedures related to collection/gathering, recording, storing and reporting of monitoring data for the project activity are performed at Embralixo – Empresa Bragantina de Varrição e Coleta de Lixo Ltda. in accordance with detailed working instructions that are included in the company's quality management and control (QA/QC) and environmental management system (EMS).</p> <p>While there is no calibration event valid for the period from 01/01/2015 to 26/04/2017 within the considered monitoring period, as outlined in Section B.1., during the period from March 2015 to 14 August 2017, no data from the LFG related monitoring instruments were recorded/reported by the project's data acquisition system and no emission reductions are thus claimed during this period. Thus, such delay in the performance of the calibration event does not affect the calculation of emission reductions achieved by the project activity during the considered monitoring period.</p>
Purpose of data/parameter	Calculation of baseline emissions
Additional comments	<p>The design of the installed LFG flow meters ensures that measurement data is automatically converted and recorded in normal cubic meters per hour (Nm³/h). Due to that, measurements of LFG pressure and LFG temperature are not required for performing GHG calculations (see further details in Section E.1).</p> <p>Reported values of $V_{t,wb}$ are used for the determination of the amount of methane in the LFG flared by the project activity ($F_{CH_4,flared,y}$) as per Option C of the applicable methodological "Tool to determine the mass flow of a greenhouse gas in a gaseous stream" (measurements of volume flow in a wet basis).</p>

Data/Parameter	$V_{CH_4,t,wb}$
Unit	m ³ CH ₄ /m ³ wet gas
Description	Volumetric fraction of CH ₄ in the collected LFG in time interval t on a wet basis.
Measured/calculated/default	Continuously measured by continuous CH ₄ content gas analyzer.
Source of data	Measured as part of the operation of the project activity by applying appropriate monitoring instruments (CH ₄ content gas analyser) (with continuous measurements being electronically recorded).
Value(s) of monitored parameter	The monthly emission reduction calculation spreadsheets (that are enclosed to this Monitoring Report) include measurement data for $V_{CH_4,t,wb}$ that are recorded and reported with an every-minute frequency.

Monitoring equipment	<p><i>Continuous CH₄ content gas analyzer unit:</i></p> <p>Specifications of the installed continuous CH₄ content gas analyzer are described below:</p> <ul style="list-style-type: none"> - Manufacturer: Landtec - Model: AEMS - Accuracy: $\pm 1\%$ - Serial number (S/N): GA08898 - Calibration frequency (as per the application of the monitoring plan and recommendations from the equipment manufacturer): Calibration events are performed every year - Calibration events valid for the considered monitoring period: Calibration event dated 23/07/2017 - Validity of the performed calibration events: The calibration event dated 23/07/2017 is valid until 22/07/2018 (1 year) - Entity/company responsible for performing the calibration events: Souza Engenharia
Measuring/reading/recording frequency	Continuously measurements are recorded/reported every minute.
Calculation method (if applicable)	Not applicable.
QA/QC procedures	<p>Monitoring equipment/instruments are calibrated and maintained as per instrument specifications and/or recommendations of their manufacturer.</p> <p>Procedures related to collection/gathering, recording, storing and reporting of monitoring data for the project activity are performed at Embralixo – Empresa Bragantina de Varrição e Coleta de Lixo Ltda. in accordance with detailed working instructions that are included in the company's quality management and control (QA/QC) and environmental management system (EMS).</p> <p>While there is no calibration event valid for the period from 01/01/2015 to 23/07/2017 within the considered monitoring period, as outlined in Section B.1., during the period from March 2015 to 14 August 2017, no data from the LFG related monitoring instruments were recorded/reported by the project's data acquisition system and no emission reductions are thus claimed during this period. Thus, such delay in the performance of the calibration event does not affect the calculation of emission reductions achieved by the project activity during the considered monitoring period.</p>
Purpose of data/parameter	Calculation of baseline emissions
Additional comments	-

Data/Parameter	T_t
Unit	K
Description	Temperature of the LFG stream in time interval t

Measured/calculated/default	Continuously measured by a temperature sensor installed along the LFG pipeline of the project activity within the flaring facility. Measurements are primarily recorded and reported in °C. Recorded/reported data is converted into Kelvin and data is also reported in this unit, thus meeting the related monitoring requirement as per the PDD.
Source of data	Measured as part of the operation of the project activity by applying appropriate monitoring instrument (temperature sensor with recordable electronic signal).
Value(s) of monitored parameter	The monthly emission reduction calculation spreadsheets (that are enclosed to this Monitoring Report) include measurement data for T ₁ that are recorded and reported with an every-minute frequency.
Monitoring equipment	<p>Measurements of temperature of LFG which is sent to the flare are performed by a temperature sensor that is installed in the main LFG pipeline within the flaring facility in a section between the centrifugal blowers and the high temperature enclosed flare.</p> <p>The specifications of the temperature sensor set utilized during the considered monitoring period are as follows;</p> <ul style="list-style-type: none"> - Manufacturer: Warne do Brasil Instrumentação e Automação Industrial - Model: PT-100 - Accuracy: $\pm 1.0^{\circ}\text{C}$ - Serial number (S/N): 37005 - Calibration frequency (as per the application of the monitoring plan and recommendations from the equipment manufacturer): Calibration events are performed every year - Calibration events valid for the considered monitoring period: Calibration event dated 03/04/2017 - Validity of the performed calibration events: The calibration event dated 03/04/2017 is valid until 02/04/2018 (1 year) - Entity/company responsible for performing the calibration events: Souza Engenharia
Measuring/reading/recording frequency	Continuously measurements are recorded/reported every minute.
Calculation method (if applicable)	Not applicable.
QA/QC procedures	<p>Monitoring equipment/instruments are calibrated and maintained as per instrument specifications and/or recommendations of their manufacturer.</p> <p>Procedures related to collection/gathering, recording, storing and reporting of monitoring data for the project activity are performed at Embralixo – Empresa Bragantina de Varrição e Coleta de Lixo Ltda. in accordance with detailed working instructions that are included in the company's quality management and control (QA/QC) and environmental management system (EMS).</p> <p>While there is no calibration event valid for the period from 01/01/2015 to 03/04/2017 within the considered monitoring period, as outlined in Section B.1., during the period from March 2015 to 14 August 2017, no data from the LFG related monitoring instruments were recorded/reported by the project's data acquisition system and no emission reductions are thus claimed during this period. Thus, such delay in the performance of the calibration event does not affect the calculation of emission reductions achieved by the project activity during the considered monitoring period.</p>
Purpose of data/parameter	Calculation of baseline emissions

Additional comments	-
---------------------	---

Data/Parameter	P_t
Unit	Pa
Description	Pressure of the LFG stream in time interval t
Measured/calculated/default	Continuously measured by a pressure sensor installed along the LFG pipeline of the project activity within the flaring facility. Measurements of pressure of LFG are primarily recorded and reported in mbar. Recorded/reported data is converted into Pascal and data is also reported in this unit, thus meeting the related monitoring requirement as per the PDD.
Source of data	Measured as part of the operation of the project activity by applying appropriate monitoring instrument (pressure sensor with recordable electronic signal).
Value(s) of monitored parameter	The monthly emission reduction calculation spreadsheet (that is enclosed to this Monitoring Report) includes measurement data for P_t that are recorded and reported with an every-minute frequency.
Monitoring equipment	<p>Measurements of pressure of LFG which is sent to the flare are performed by a pressure sensor that is installed in the main LFG pipeline within the flaring facility in a section between the centrifugal blowers and the high temperature enclosed flare.</p> <p>The specifications of the LFG pressure sensor utilized during the considered monitoring period are as follows:</p> <ul style="list-style-type: none"> - Manufacturer: Warne do Brasil Instrumentação e Automação Industrial - Model: WTP-4010 - Serial Number: 41645 - Accuracy: $\pm 0.5\%$ - Calibration frequency (as per the application of the monitoring plan and recommendations from the equipment manufacturer): Calibration events are performed every year - Calibration events valid for the considered monitoring period: Calibration event dated 03/04/2017 - Validity of the performed calibration events: The calibration event dated 03/04/2017 is valid until 02/04/2018 (1 year) - Entity/company responsible for performing the calibration events: Souza Engenharia
Measuring/reading/recording frequency	Continuously measurements are recorded/reported every minute.
Calculation method (if applicable)	Not applicable.

QA/QC procedures	<p>Monitoring equipment/instruments are calibrated and maintained as per instrument specifications and/or recommendations of manufacturer.</p> <p>Procedures related to collection/gathering, recording, storing and reporting of monitoring data for the project activity are performed at Embralixo – Empresa Bragantina de Varrição e Coleta de Lixo Ltda. in accordance with detailed working instructions that are included in the company's quality management and control (QA/QC) and environmental management system (EMS).</p> <p>While there is no calibration event valid for the period from 01/01/2015 to 03/04/2017 within the considered monitoring period, as outlined in Section B.1., during the period from March 2015 to 14 August 2017, no data from the LFG related monitoring instruments were recorded/reported by the project's data acquisition system and no emission reductions are thus claimed during this period. Thus, such delay in the performance of the calibration event does not affect the calculation of emission reductions achieved by the project activity during the considered monitoring period.</p>
Purpose of data/parameter	Calculation of baseline emissions
Additional comments	-

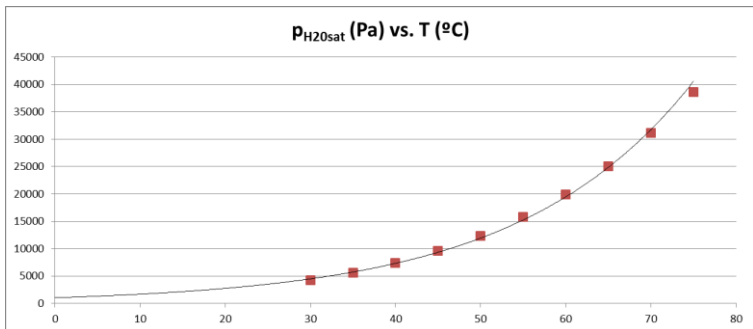
Data/Parameter	EC_{PJ,grid,y}
Unit	MWh
Description	Amount of grid electricity consumed by the project activity during the year y
Measured/calculated/default	Measured as part of the operation of the project activity by applying appropriate electricity meter.
Source of data	Measured as part of the operation of the project activity by applying appropriate monitoring instrument (electricity meter).
Value(s) of monitored parameter	Monthly records of grid-sourced electricity consumption valid for the considered monitoring period:

Monitoring equipment	<p><i>Specifications of the installed electricity meter</i></p> <ul style="list-style-type: none"> - Manufacturer: Itron Inc. - Model: MY202A - Serial Number: 1321986 - Accuracy: $\pm 2\%$ - Calibration frequency (as per the application of the monitoring plan and recommendations from the equipment manufacturer): Calibration events are performed every 5 years - Calibration events valid for the considered monitoring period: Calibration event dated 21/10/2014 - Validity of the performed calibration events: The calibration event dated 21/10/2014 is valid until 20/10/2019 (5 years) - Entity/company responsible for performing the calibration events: Souza Engenharia
Measuring/reading/recording frequency	Continuous measurements performed by installed electricity meter are automatically transmitted, aggregated and recorded every hour. Accumulated measurement records are reported every week.
Calculation method (if applicable)	Not applicable.
QA/QC procedures	<p>Monitoring equipment/instruments are calibrated and maintained as per instrument specifications and/or recommendations of manufacturer.</p> <p>Procedures related to collection/gathering, recording, storing and reporting of monitoring data for the project activity are performed at Embralixo – Empresa Bragantina de Varrição e Coleta de Lixo Ltda. in accordance with detailed working instructions that are included in the company's quality management and control (QA/QC) and environmental management system (EMS).</p>
Purpose of data/parameter	Calculation of project emissions (due to consumption of grid-sourced electricity by the project activity).
Additional comments	

Data/Parameter	$F_{CH_4,EG,t}$
Unit	Kg
Description	Mass flow of methane in the exhaust gas of the flare on a dry basis at reference conditions in the time period t
Measured/calculated/default	Measurements performed by a third party accredited entity.
Source of data	No determination of $F_{CH_4,EG,t}$ was performed during the present monitoring period.
Value(s) of monitored parameter	
Monitoring equipment	Measurements were performed by the independent 3 rd party inspection service company "IST tecnologia internacional em sensores Ltda." using an appropriated chromatographer and a pitot tube.
Measuring/reading/recording frequency	Biannual

Calculation method (if applicable)	-
QA/QC procedures	Procedures related to collection/gathering, recording, storing and reporting of monitoring data for the project activity are performed at URBAM – Urbanizadora Municipal S.A. in accordance with detailed working instructions that are included in the company's quality management and control (QA/QC) and environmental management system (EMS).
Purpose of data/parameter	Calculation of baseline emissions
Additional comments	-

Data/Parameter	$p_{H_2O,t,Sat}$
Unit	Pa (depending on measurement instrument, measurement records in mbar will be converted and also reported in Pa)
Description	Saturation pressure of H ₂ O at temperature T_t in time interval t
Measured/calculated/default	Default values as per selected literature.
Source of data	Data selected as per the literature " <i>Fundamentals of Classical Thermodynamics</i> ". Authors: Gordon J. Van Wylen, Richard E. Sonntag and Borgnakke; 4 th Edition. Published by John Wiley & Sons, Inc.
Value(s) of monitored parameter	$p_{H_2O,t,Sat}$ is determined as a function of temperature of LFG (T_t) by the equation: $p_{H_2O,t,sat} = 1,031.3 * e^{(0.049 * T_t)}$, with a correlation coefficient of $R^2 = 0.998$. Further details are presented below in "Calculation Method".
Monitoring equipment	Not applicable.
Measuring/reading/recording frequency	Not applicable

Calculation method (if applicable)	<p>The Absolute Vapor Pressure of Water was obtained from the mentioned literature and is presented in the following table within the range of interest for the required calculations:</p> <table><tr><th>Temperature</th><th>p_{H2O,t,Sat}</th></tr><tr><td>°C</td><td>Pa</td></tr><tr><td>30</td><td>4,246</td></tr><tr><td>35</td><td>5,628</td></tr><tr><td>40</td><td>7,384</td></tr><tr><td>45</td><td>9,593</td></tr><tr><td>50</td><td>12,349</td></tr><tr><td>55</td><td>15,758</td></tr><tr><td>60</td><td>19,940</td></tr><tr><td>65</td><td>25,030</td></tr><tr><td>70</td><td>31,190</td></tr><tr><td>75</td><td>38,580</td></tr></table>	Temperature	p _{H2O,t,Sat}	°C	Pa	30	4,246	35	5,628	40	7,384	45	9,593	50	12,349	55	15,758	60	19,940	65	25,030	70	31,190	75	38,580
	Temperature	p _{H2O,t,Sat}																							
	°C	Pa																							
	30	4,246																							
	35	5,628																							
	40	7,384																							
	45	9,593																							
	50	12,349																							
	55	15,758																							
	60	19,940																							
65	25,030																								
70	31,190																								
75	38,580																								
<p>The following graphic represents the above data and the regression calculated to adjust data:</p> 																									
<p>As p_{H2O,t,Sat} is a function of temperature and best represented by an exponential function, the exponential regression method is applied to the above data and the following equation is obtained:</p> <p>$p_{H_2O,t,sat} = 1,031.3 * e^{(0.049 * Tt)}$</p> <p>This equation represents the above data with a correlation coefficient of R² = 0.998.</p> <p>Thus, by applying the above equation, p_{H2O,t,sat} is determined as a function of the temperature.</p>																									
QA/QC procedures	Not applicable.																								
Purpose of data/parameter	Calculation of baseline emissions.																								
Additional comments	<p>It is important to note that p_{H2O,t,Sat} is only used in the context of the determination of the methane mass flow in the residual gas (in a dry basis) for each minute <i>m</i> of the two time periods in year <i>y</i> during which the flare efficiency is measured (parameter F_{CH4,RG,t}). The calculations of every-minute values of p_{H2O,t,Sat} for the 2 time periods during which the flare efficiency is measured is thus presented only in the flare efficiency calculation spreadsheet.</p>																								

Not applicable.

Calculation of baseline emissions.

It is important to note that $p_{H_2O,t,Sat}$ is only used in the context of the determination of the methane mass flow in the residual gas (in a dry basis) for each minute m of the two time periods in year y during which the flare efficiency is measured (parameter $F_{CH_4,RG,t}$). The calculations of every-minute values of $p_{H_2O,t,Sat}$ for the 2 time periods during which the flare efficiency is measured is thus presented only in the flare efficiency calculation spreadsheet.

Data/Parameter	$T_{EG,m}$
Unit	°C
Description	Temperature in the exhaust gas of the enclosed flare in minute <i>m</i>
Measured/calculated/default	Continuously measured by a thermocouple installed in the upper section of the flare
Source of data	Measured as part of the operation of the project activity by applying appropriate monitoring instruments (thermocouple with recordable electronic signal).
Value(s) of monitored parameter	Values are reported in the monthly emission reduction calculation spreadsheets (that are enclosed to this Monitoring Report). Measurement data is recorded and reported with an every-minute frequency.
Monitoring equipment	<p>The specifications of the installed thermocouple are as follows;</p> <ul style="list-style-type: none"> - Manufacturer: Warne do Brasil Instrumentação e Automação Industrial - Type: K - Serial Number: 67896 - Accuracy: $\pm 0.15\%$ - Calibration frequency (as per the application of the monitoring plan and recommendations from the equipment manufacturer): Calibration events are performed every year - Calibration events valid for the considered monitoring period: Calibration event dated 04/05/2017 - Validity of the performed calibration events: The calibration event dated 04/05/2017 is valid until 03/05/2018 (1 year) - Entity/company responsible for performing the calibration events: Souza Engenharia
Measuring/reading/recording frequency	Continuous measurements are recorded/reported every minute.
Calculation method (if applicable)	-
QA/QC procedures	<p>Monitoring equipment/instruments are calibrated and maintained as per instrument specifications and/or recommendations of manufacturer.</p> <p>Procedures related to collection/gathering, recording, storing and reporting of monitoring data for the project activity are performed at Embralixo – Empresa Bragantina de Varrição e Coleta de Lixo Ltda. in accordance with detailed working instructions that are included in the company's quality management and control (QA/QC) and environmental management system (EMS).</p> <p>While there is no calibration event valid for the period from 01/01/2015 to 04/05/2017 within the considered monitoring period, as outlined in Section B.1., during the period from March 2015 to 14 August 2017, no data from the LFG related monitoring instruments were recorded/reported by the project's data acquisition system and no emission reductions are thus claimed during this period. Thus, such delay in the performance of the calibration event does not affect the calculation of emission reductions achieved by the project activity during the considered monitoring period.</p>
Purpose of data/parameter	Calculation of baseline emissions.

Additional comments	Measurements are required to determine if manufacturer's flare specifications for operating temperature are met.
---------------------	--

Data/Parameter	Flame_m
Unit	Flame status "on" or flame status "off"
Description	Flame detection of flare in the minute <i>m</i>
Measured/calculated/default	Continuously measured by Ultra violet (UV) flame detector
Source of data	Whenever flame is detected in the flare, flame status "on" or "1" value is attributed. Whenever no flame is detected in the flare, flame status "off" or "0" is attributed.
Value(s) of monitored parameter	Values are reported in the monthly emission reduction calculation spreadsheets (that are enclosed to this Monitoring Report). Measurement data is recorded and reported with an every-minute frequency.
Monitoring equipment	<p><i>Specifications and calibration details for the installed/utilized UV Flame detector:</i></p> <ul style="list-style-type: none"> - Manufacturer: Honeywell Analytics Ltd. - Model: C7061A Dynamic Self-Check Ultra-Violet Flame Detector - Serial Number: 1170 - Calibration frequency: No calibration is required as the equipment has a self-checking function.
Measuring/reading/recording frequency	Continuously measurements are recorded/reported every minute.
Calculation method (if applicable)	Not applicable
QA/QC procedures	<p>Monitoring equipment/instruments are calibrated and maintained as per instrument specifications and/or recommendations of manufacturer.</p> <p>Procedures related to collection/gathering, recording, storing and reporting of monitoring data for the project activity are performed at Embralixo – Empresa Bragantina de Varrição e Coleta de Lixo Ltda. in accordance with detailed working instructions that are included in the company's quality management and control (QA/QC) and environmental management system (EMS).</p>
Purpose of data/parameter	Calculation of baseline emissions
Additional comments	-

Data/Parameter	Maintenance_y
Unit	Calendar dates
Description	Maintenance events completed in year <i>y</i> as monitored by the project participants.
Measured/calculated/default	-

Source of data	Maintenance logs
Value(s) of monitored parameter	N/A
Monitoring equipment	Not applicable.
Measuring/reading/recording frequency	Not applicable.
Calculation method (if applicable)	Not applicable.
QA/QC procedures	The maintenance event logs and documentation for the whole project activity are recorded as per requirement of the company's quality and control (QA/QC) and environmental management (EMS) system that is implemented for activities undertaken at the Bragança landfill.
Purpose of data/parameter	Calculation of baseline emissions
Additional comments	<p>Monitoring of this parameter is required for the case of enclosed flare and the project participant selects Option B to determine flare efficiency.</p> <p>These dates are required so that they can be compared to the maintenance schedule to check that maintenance events were completed within the minimum time between maintenance events specified by the manufacturer (SPEC_{flare}).</p>

Data/Parameter	Status of biogas destruction device
Unit	-
Description	Operational status of biogas destruction devices
Measured/calculated/default	Every-minute records of the status of the flare are reported based on the flame status of the flare (parameter Flame _m).
Source of data	Every-minute records of the status of the flare are reported based on the flame status of the flare (parameter Flame _m).
Value(s) of monitored parameter	Not applicable.
Monitoring equipment	Specification details for the UV flame detector of the flare are presented in the applicable table for the parameter Flame _m .
Measuring/reading/recording frequency	Continuous measurements will be recorded and reported with an every minute frequency.
Calculation method (if applicable)	Not applicable
QA/QC procedures	-
Purpose of data/parameter	Calculation of baseline emissions
Additional comments	-

The following monitoring parameters (which are also included in the monitoring plan of the PDD) were not monitored as the methodological options for which they are applicable were not selected as the monitoring or calculation approaches for the determination of baseline emissions and/or project emissions achieved by the project activity during the considered monitoring period:

- Volumetric flow of LFG stream in time interval t on a dry basis ($V_{t,db}$)
- Volumetric fraction of CH_4 in the collected LFG in time interval t on a dry basis ($v_{CH_4,t,db}$)
- Mass flow of the LFG stream in time interval t on dry basis for ($M_{t,db}$)
- Volumetric fraction of component i in the residual gas on a dry basis in the minute m where $i = CH_4, CO, CO_2, O_2, H_2, H_2S, NH_4, N_2$ ($v_{i,RG,m}$)
- Mass flow of the residual gas on a dry basis at reference conditions in the minute m ($M_{RG,m}$)
- Volumetric fraction of O_2 in the exhaust gas on a dry basis at reference conditions in the minute m ($v_{O_2,EG,m}$)
- Concentration of methane in the exhaust gas of the flare on a dry basis at reference conditions in the minute m ($f_{CH_4,EG,m}$)
- Mass flow of methane in the exhaust gas of the flare on a dry basis at reference conditions in the time period t ($F_{CH_4,EG,t}$)

D.3. Implementation of sampling plan

>>

Not applicable.

SECTION E. Calculation of emission reductions or net anthropogenic removals

E.1. Calculation of baseline emissions or baseline net removals

>>

Under conformance with provisions and calculation approaches of the registered PDD, Baseline emissions (BE_y) for the considered monitoring period are determined (in tCO_2e) as follows:

$$BE_y = BE_{CH_4,y}$$

Where:

$BE_{CH_4,y}$ Baseline emissions of methane from the SWDS⁴. As established by both ACM0001 (version 18.0) and the PDD, the determination of $BE_{CH_4,y}$ is based on the amount of methane that is actually captured and combusted (through destruction of collected LFG in the flare) by the project activity. As established by both ACM0001 (version 18.0) and the PDD, the amount of methane that, in the absence of the project activity (baseline scenario), would be otherwise captured and destroyed in the landfill (by the pre-project previously existent conventional LFG destruction system) is also taken into account. In addition, the effect of methane oxidation (that, as per ACM0001 (version 18.0) is assumed as existing in the baseline and not in the project scenario) is also taken into account. $BE_{CH_4,y}$ is thus determined as follows:

$$BE_{CH_4,y} = ((1 - OX_{top_layer}) * F_{CH_4,PJ,y} - F_{CH_4,BL,y}) * GWP_{CH_4}$$

Where:

⁴ SWDS = Solid Waste Disposal Site. For the case of the project activity, the SWDS is the Bragança landfill.

OX_{top_layer} Fraction of methane in the LFG that would be oxidized in the top layer of the SWDS in the baseline scenario. OX_{top_layer} is ex-ante determined as 10%. Further details about the selection of the value for OX_{top_layer} is included in Section D.1 and in the PDD.

$GWP_{CH_4,y}$ Global warming potential of CH_4 . GWP_{CH_4} is ex-ante determined as 25. Further details about the selection of the value for GWP_{CH_4} is included in Section D.1 and in the PDD.

$F_{CH_4,BL,y}$ Amount of methane in the LFG that would be flared in the baseline scenario (absence of project activity). As outlined in Section B.6.1 of the PDD, $F_{CH_4,BL,y}$ is calculated as follows:

$$F_{CH_4,BL,y} = F_{CH_4,hist,y} = F_{CH_4,BL,x-1} / F_{CH_4,x-1} * F_{CH_4,PJ,y}$$

Where:

$F_{CH_4,x-1}$ Amount of methane in the LFG generated in the SWDS in the year prior to the implementation of the project activity. $F_{CH_4,2007}$ is ex-ante determined as 2,430.66 t CH_4 .

$F_{CH_4,BL,x-1}$ Historical amount of methane in the LFG which is captured and destroyed in the year prior to the implementation of the project activity. $F_{CH_4,BL,x-1}$ is ex-ante determined as 71.20 t CH_4 . Further details about the selection of the value for $F_{CH_4,BL,x-1}$ is included in Section D.1 and in the PDD.

$F_{CH_4,PJ,y}$ Amount of methane in the LFG which is flared and/or used in the project activity. Details about the determination of every-minute values of the parameter $F_{CH_4,PJ,y}$ are presented below.

For the considered monitoring period, $F_{CH_4,BL,y}$ is thus determined as follows:

$$F_{CH_4,BL,y} = (71.20 / 2,430.66) * F_{CH_4,PJ,y} = 0.0293 * F_{CH_4,PJ,y}$$

For the considered monitoring period, the accumulated value for $F_{CH_4,BL,y}$ is calculated and reported as 0 t CH_4 . All related calculation are presented in the monthly emission reduction calculation spreadsheets that are enclosed to the Monitoring Report.

$F_{CH_4,PJ,y}$ Amount of methane in the LFG which is flared and/or used in the project activity. In the particular case of the project activity, $F_{CH_4,PJ,y}$ is determined as follows:

$$F_{CH_4,PJ,y} = F_{CH_4,flared,y}$$

Where:

$F_{CH_4,flared,y}$ Amount of methane in the LFG which is destroyed by flaring (in t CH_4). In accordance with calculation guidance included in the PDD and by following applicable guidance of the "Tool to determine the mass flow of a greenhouse gas in a gaseous stream", every-minute values for $F_{CH_4,flared,y}$ are determined as the difference between the amount of methane

supplied to the flare and residual methane emissions from combustion of LFG in the flare, as follows:

$$F_{CH4,flared,y} = F_{CH4,sent_flare,y} - (PE_{flare,y} / GWP_{CH4})$$

Where:

$F_{CH4,sent_flare,y}$ Amount of methane in the LFG which is sent to the flare. Details for the determination of every-minute values for $F_{CH4,sent_flare,y}$ are presented below (under “*Determination of every-minute values for the calculation parameter $F_{CH4,sent_flare,y}$* ”).

$PE_{flare,y}$ Project emissions from flaring of the residual gas stream. Details for the determination of every-minute values for $PE_{flare,y}$ for each individual flare are presented below (under “*Determination of $PE_{flare,y}$* ”).

Determination of every-minute values for the calculation parameter $F_{CH4,sent_flare,y}$:

For the considered monitoring period, Option C of the “Tool to determine the mass flow of a greenhouse gas in a gaseous stream” (where the gaseous stream the tool shall be applied to is the stream of collected LFG that is sent to the flare)⁵ is the selected option for determination of values of $F_{CH4,sent_flare,y}$.

$F_{CH4,sent_flare,y}$:

By following calculation option C (that is one of the applicable calculation methods the PDD refers to), the mass flow of greenhouse gas i ($F_{i,t}$) ($i = CH_4$) for the installed flare during the whole considered monitoring period is determined as follows:

$$F_{CH4,sent_flare,y} = F_{CH4,t} = V_{t,wb,n} * v_{CH4,t,wb} * \rho_{CH4,n}$$

Where:

$V_{t,wb,n}$ Volumetric flow of the gaseous stream (LFG) to the flare in time interval t on a wet basis at normal conditions. For the considered monitoring period, every-minute values of the calculation parameter $V_{t,wb,n}$ are measured and reported (in Nm³ wet gas/h) in the monthly emission reduction calculation spreadsheets valid for the considered monitoring period (and enclosed to this Monitoring Report). While in the particular case of the project activity, during the considered monitoring period, volumetric flow of the gaseous stream (LFG) is already measured in Nm³ of wet gas/h (normal conditions), the following assumption is thus valid:

$V_{t,wb,n,flare}$ is equivalent to $V_{t,wb,flare}$

Where:

⁵ It is relevant to note that the PDD states the following regarding the calculation approach for values of $F_{CH4,sent_flare,y}$:

“Applicable guidance of the “Tool to determine the mass flow of a greenhouse gas in a gaseous stream” will be applied to determine $F_{CH4,sent_flare,y}$ by using one of the options A, B, C or D. The selection of the determination option will depend on project conditions and equipment to be installed.”

$V_{t,wb}$ Volumetric flow of the gaseous stream (LFG) sent to the flare in time interval t on a wet basis (in actual conditions)

Note: in accordance with the PDD, since measurements of LFG flow sent to the flare are automatically converted and recorded in normalized cubic meters (by considering standard temperature and pressure (STP) conditions), monitoring of “Pressure of the LFG stream in time interval t ” (P_t) and “Temperature of the LFG stream in time interval t ” (T_t) are thus not required for the determination of $V_{t,wb,n}$. Further monitoring details about the monitoring parameter $V_{t,wb}$ are included in Section D.2.

$V_{CH_4,t,wb}$ Volumetric fraction of CH_4 in the gaseous stream in time interval t on a wet basis. As per the applied monitoring procedure, every-minute values of the monitoring parameter $v_{CH_4,t,wb}$ (in m^3 of CH_4 / m^3 of wet LFG) are reported in the monthly emission reduction calculation spreadsheet valid for the considered monitoring period (and enclosed to this Monitoring Report). Further monitoring details about the monitoring parameter $v_{CH_4,t,wb}$ are included in Section D.2.

$\rho_{CH_4,n}$ Density of CH_4 in the gaseous stream (LFG) at normal conditions. For the considered monitoring period, value of $\rho_{CH_4,n}$ (in kg of CH_4 / m^3 of CH_4) is calculated and reported in the monthly emission reduction calculation spreadsheet valid for the considered monitoring period (and enclosed to this Monitoring Report) as follows:

$$\rho_{CH_4,n} = (P_n * MM_i) / (R_u * T_n)$$

Where:

P_n Absolute pressure at normal conditions. P_n is ex-ante determined as 101,325 Pa. Further details about the ex-ante determined parameter P_n are included in Section D.1 and in the PDD.

T_n Temperature at normal conditions. T_n is ex-ante determined as 273.15 Kelvin. Further details about the ex-ante determined parameter T_n are included in Section D.1 and in the PDD.

MM_i Molecular mass of greenhouse gas i ($i = CH_4$). MM_i ($i = CH_4$) is ex-ante determined as 16.04 kg/mol. Further details about the ex-ante determined parameter MM_i ($i = CH_4$) are presented in Section D.1 and in the PDD.

R_u Universal ideal gases constant. R_u is ex-ante determined as 8,314 Pa.m³/kmol.K. Further details about the ex-ante determined parameter R_u are presented in Section D.1 and in the PDD.

$\rho_{CH_4,n}$ is calculated as 0.7156650 kg CH_4 / m³ CH_4 as reported in the monthly emission reduction calculation spreadsheet valid for the considered monitoring period.

Determination of $PE_{flare,y}$:

The default value of 0.90 for $PE_{flare,y}$ was used during the present monitoring period.

For the considered monitoring period, the accumulated value for $F_{CH_4,PJ,y} = F_{CH_4,flared,y}$ is calculated as 0 t CH_4 .

For the considered monitoring period, baseline emissions of methane from the SWDS ($BE_{CH_4,y}$) are calculated as 0 tCO₂e.

The summarized emission reduction calculation spreadsheets (that are enclosed to this Monitoring Report) summarizes the determination of $BE_y = BE_{CH_4,y}$ for the considered monitoring period. For the considered monitoring period, $BE_y = 0 \text{ tCO}_2\text{e}$

E.2. Calculation of project emissions or actual net removals

>>

As outlined in the registered PDD, the operation of the project activity requires consumption of grid-sourced electricity. As also established in the PDD, project emissions due to consumption of this energy carrier are determined by following the applicable guidance of the “Tool to calculate baseline, project and/or leakage emissions from electricity consumption”.

Under conformance with provisions and calculation approaches of the registered PDD, project emissions (PE_y) for the considered monitoring period are determined (in tCO_2e) as follows:

$$PE_y = PE_{EC,grid,y}$$

Where:

$PE_{EC,grid,y}$ Project emissions due to the consumption of grid-sourced electricity by the project activity. $PE_{EC,grid,y}$ is calculated as per the “Tool to calculate baseline, project and/or leakage emissions from electricity consumption” as follows:

$$PE_{EC,grid,y} = EC_{PJ,grid,y} * EF_{EL,grid,y} * (1 + TDL_{grid,y})$$

Where:

$TDL_{grid,y}$ Average technical transmission and distribution losses for grid sourced electricity consumed by the project activity in year y . $TDL_{grid,y}$ is ex-ante selected as 20%. Further details about the ex-ante determined parameter $TDL_{grid,y}$ are included in Section D.1 and in the PDD.

$EC_{PJ,grid,y}$ Quantity of grid sourced electricity consumed by the project activity in year y (in MWh)

Additional monitoring details about the monitoring parameter $EC_{PJ,grid,y}$ are included in Section D.2.

$EF_{EL,grid,y}$ Emission factor for grid sourced electricity in year y (in tCO_2/MWh). $EF_{EL,grid,y}$ is determined as the combined margin emission factor ($EF_{grid,CM,y}$) that is calculated as the weighted average of the operating margin and build margin emission factors. To weight these two factors, the default values applicable to both for the 2nd crediting period are applied. The combined margin emission factor is thus obtained as follows:

$$EF_{grid,CM,y} = w_{OM} * EF_{grid,OM,y} + w_{BM} * EF_{grid,BM,y}$$

Where:

w_{OM} Weighting of operating margin emissions factor. w_{OM} is ex-ante selected as 0.25. Further details about the ex-ante selected parameter w_{OM} are included in Section D.1 and in the PDD.

W_{BM}	Weighting of operating margin emissions factor. W_{BM} is ex-ante selected as 0.75. Further details about the ex-ante selected parameter W_{BM} are included in Section D.1 and in the PDD.
$EF_{grid,OM,y}$	Operating margin CO ₂ emission factor in year y (in tCO ₂ /MWh). $EF_{grid,OM}$ is ex-ante determined as 0.4979 tCO ₂ /MWh. Further details about the ex-ante determined parameter $EF_{grid,BM}$ are included in Section D.1.
$EF_{grid,BM,y}$	Build margin CO ₂ emission factor in year y . $EF_{grid,BM}$ is ex-ante determined as 0.1581 tCO ₂ /MWh. Further details about the ex-ante determined parameter $EF_{grid,BM}$ are included in Section D.1.

For the considered monitoring period from 01/01/2015 to 18/06/2017, $EF_{EL,grid,y}$ is thus calculated as 0.2431 tCO₂/MWh

For the considered monitoring period, project emissions due to the consumption of grid-sourced electricity by the project activity ($PE_{EC,grid,y}$) are thus calculated as 0 tCO₂ (rounded value).

The summarized emission reduction calculation spreadsheet (that is enclosed to this Monitoring Report) includes all calculations related to the determination of $PE_{EC,grid,y}$ for the considered monitoring period.

E.3. Calculation of leakage emissions

>>

Not applicable.

E.4. Calculation of emission reductions or net anthropogenic removals

Note on the present monitoring report regarding the CER unclaimable period:

It is important to mention that due to the delay in the notification of the EB regarding the intention to renew the crediting period of the project activity, sent on 21/12/2016 with a 900 day delay, and in line with the applicable provisions of the CDM Project Cycle Procedure an unclaimable period of CERs from 01/10/2015 to 18/06/2017 was created. That period is fully covered by the present monitoring report, where no CERs are claimed.

	Baseline GHG emissions or baseline net GHG removals (t CO ₂ e)	Project GHG emissions or actual net GHG removals (t CO ₂ e)	Leakage GHG emissions (t CO ₂ e)	GHG emission reductions or net anthropogenic GHG removals (t CO ₂ e)		
				Before 01/01/2013	From 01/01/2013	Total amount
Total	0	0	-	-	0	0

E.5. Comparison of emission reductions or net anthropogenic removals achieved with estimates in the registered PDD

Amount achieved during this monitoring period (t CO ₂ e)	Amount estimated ex ante (t CO ₂ e)
0	109,967

E.6. Remarks on increase in achieved emission reductions

>>

Not applicable.

- - - - -

Document information

<i>Version</i>	<i>Date</i>	<i>Description</i>
06.0	7 June 2017	Revision to: <ul style="list-style-type: none"> • Ensure consistency with version 01.0 of the “CDM project standard for project activities” (CDM-EB93-A04-STAN); • Make editorial improvements.
05.1	4 May 2015	Editorial revision to correct version numbering.
05.0	1 April 2015	Revisions to: <ul style="list-style-type: none"> • Include provisions related to delayed submission of a monitoring plan; • Provisions related to the Host Party; • Remove reference to programme of activities; • Overall editorial improvement.
04.0	25 June 2014	Revisions to: <ul style="list-style-type: none"> • Include the Attachment: Instructions for filling out the monitoring report form (these instructions supersede the "Guideline: Completing the monitoring report form" (Version 04.0)); • Include provisions related to standardized baselines; • Add contact information on a responsible person(s)/ entity(ies) for completing the CDM-MR-FORM in A.6 and Appendix 1; • Change the reference number from <i>F-CDM-MR</i> to <i>CDM-MR-FORM</i>; • Editorial improvement.
03.2	5 November 2013	Editorial revision to correct table in page 1.
03.1	2 January 2013	Editorial revision to correct table in section E.5.
03.0	3 December 2012	Revision required to introduce a provision on reporting actual emission reductions or net GHG removals by sinks for the period up to 31 December 2012 and the period from 1 January 2013 onwards (EB 70, Annex 11).
02.0	13 March 2012	Revision required to ensure consistency with the "Guidelines for completing the monitoring report form" (EB 66, Annex 20).
01.0	28 May 2010	EB 54, Annex 34. Initial adoption.
Decision Class: Regulatory Document Type: Form Business Function: Issuance Keywords: monitoring report		