



Monitoring report form for CDM project activity
(Version 06.0)

MONITORING REPORT

Title of the project activity	BRASCARBON Methane Recovery Project BCA-BRA-05, Brazil	
UNFCCC reference number of the project activity	Project 3455	
Version number of the PDD applicable to this monitoring report	02	
Version number of this monitoring report	01	
Completion date of this monitoring report	20/01/2018	
Monitoring period number	Forth monitoring period	
Duration of this monitoring period	01/01/2013 to 14/07/2015 (first and last days included)	
Monitoring report number for this monitoring report	N/A	
Project participants	Brascarbon Consultoria, Projetos e Representação S/A. Norwegian Ministry of Climate and Environment	
Host Party	Brazil	
Sectoral scopes	Sectorial scope 13 – Waste handling and disposal	
Applied methodologies and standardized baselines	AMS-III.D version 14	
Amount of GHG emission reductions or net anthropogenic GHG removals achieved by the project activity in this monitoring period	Amount achieved before 1 January 2013	Amount achieved from 1 January 2013
	N/A	119,803 tCO ₂ e (926 days)
Amount of GHG emission reductions or net anthropogenic GHG removals estimated ex ante for this monitoring period in the PDD	89,238 tCO ₂ e (926 days)	

SECTION A. Description of project activity

A.1. General description of project activity

The Project Activity involves the capture and combustion of biogas produced from the decomposing manure at swine confined animal feed operations located in Mato Grosso do Sul state, Brazil. It consists in the construction of a new covered in-ground anaerobic reactor (digester) that utilizes the manure previously treated in anaerobic open lagoons to produce biogas. The resulting biogas is measured and destroyed through a flaring system.

The result of this project is a significant reduction of GHG emissions compared to those emissions that would have occurred in the absence of the project and also promotion of sustainable swine production farms, bringing environmental and social benefits, moving from a high-GHG animal waste management system practice to anaerobic digester with capture and combustion of resulting biogas.

This project applies version 14 of the Methane Recovery methodology identified in Section III.D, of the Indicative Simplified Baseline and Monitoring Methodologies for Small-Scale CDM Project Activity Categories, to swine confined feed operations located in the state of Mato Grosso do Sul, Brazil.

The start of the first construction was 03/03/2008. All sites included in the PDD and the relevant dates of the project implementation for each site are described in the Section B1, because this project activity is composed of 18 different sites.

The total emission reductions achieved in this monitoring period are 119,803 tCO₂e.

A.2. Location of project activity

The project is located in the several different cities in the state of Mato Grosso do Sul, Brazil. The detailed physical location for each project site is presented in Table A1.

Table A.1. – Detailed physical location and identification of project site

Farm / Site	Brascarbon ID	Address	Town / State	Contact	Phone	GPS Coord
Fazenda Agua Branca	BCA-030MS1-05	BR 163 - Km 592 – countryside – toward C. Grande -left	São G. do Oeste - MS	Delcio Guzzi	+55 67 9969 3706	S 19,5492 W 54,4331
Fazenda Rodeio - Gleba C	BCA-031MS1-05	Chácara Bairro jardim Gramado - Road to Cuiabá – left side	São G. do Oeste - MS	Alídio Biazus	+55 67 3295 1304	S 19,3772 W 54,6128
Fazenda Dragão	BCA-032MS1-05	BR 163 - toward Cuiaba left	São Gabriel do Oeste - MS	Antonio Macari	+55 67 9611 8958	S 19,1547 W 54,7625
Lote 55 e 54	BCA-034MS1-05	BR 163 toward Coxim - Assentamento Campanário	São Gabriel do Oeste - MS	Antenor Barbosa de Oliveira Roque Luiz Busanello	+55 67 9962 2063	S 19,2911 W 54,6051
Lote 101	BCA-035MS1-05	BR 163 toward Coxim - Assentamento Campanário	São Gabriel do Oeste - MS	Leonildo Gama da Silva	+55 67 9936-7840	S 19,2683 W 54,5650
Lote 105	BCA-036MS1-05	BR 163 toward Coxim - Assentamento Campanário	São Gabriel do Oeste - MS	Vanderlei Carlos Shimit	+55 67 9934-0227	S 19,2644 W 54,5628
Lote 71	BCA-037MS1-05	BR 163 toward Coxim - Assentamento Campanário	São Gabriel do Oeste - MS	Airton José Borgmam	+55 67 9915-7335	S 19,2736 W 54,5942
Lote 82	BCA-038MS1-05	BR 163 toward Coxim - Assentamento Campanário	São Gabriel do Oeste - MS	João Ferreira dos Santos	+55 67 9962-1715	S 19,2714 W 54,5900
Lote 28 e 27	BCA-039MS1-05	BR 163 toward Coxim - Assentamento Campanário	São Gabriel do Oeste - MS	Hilário Valentini e Valderi Valentin	+55 67 8424-8682	S 19,2836 W 54,6264
Fazenda Bela Vista	BCA-040MS1-05	BR163 - Km 609 – country Road to Ponto Alto - left side	São Gabriel do Oeste - MS	Jair Antonio Borgman	+55 67 3295 5031	S 19,4414 W 54,5622
Granja Serra Dourada	BCA-041MS1-05	BR163 - Km 609 – country Road to Ponto Alto right side	São G. do Oeste - MS	Rainer Josef Ruiz de Goehr	+55 67.8122-35661	S 19,2647 W 54,5642
Fazenda Cachoeira	BCA-042MS1-05	BR163 - Km 609 – country Road to Ponto Alto - left side	São Gabriel do Oeste - MS	Valdir Scotton	+55 67 9962 1494	S 19,4364 W 54,5589
Granja Capivara	BCA-043MS1-05	BR163 - Km 609 – Country Road to Ponto Alto left	São G. do Oeste - MS	Zélio Antonio Pessato	+55 67 3295 1242	S 19,4269 W 54,5483
Fazenda Sorgatto	BCA-046MS1-05	BR 163 - Km 604 – toward south – right side 8 km from São Gabriel.do Oeste	São Gabriel do Oeste - MS	João Carlos Sorgatto	+55 67 9996 9990	S 19,4658 W 54,5256
Fazenda Santa Catarina	BCA-047MS1-05	BR163 - Km 594 – country Road to Ponto Alto	São G. do Oeste - MS	Cooasgo	+55 67 3295 1201	S 19,5600 W 54,3197
Fazenda Bambú - Quinhão A	BCA-051MS1-05	Ponte Vermelha – District of São Gabriel do Oeste	São Gabriel do Oeste - MS	Ari Fernando Grando	+55 67 3295 1097	S 20,2939 W 54,6383
Fazenda Folleto	BCA-052MS1-05	Old BR163 - toward Ponto Alto	São G. do Oeste - MS	Jose Jorge Foletto	+55 67 9905 7306	S 19,5383 W 54,5208
Fazenda Ponte Vermelha	BCA-068MS1-05	BR 163 - KM 586 – Road to Area da Ponte Vermelha - 3 km right	São G. do Oeste - MS	Valdinei Viviam	+55 67 3295 5345	S 19,4753 W 54,4061

A.3. Parties and project participants

Parties involved	Project participants	Indicate if the Party involved wishes to be considered as project participant (Yes/No)
Brazil (host)	Brascarbon Consultoria, Projetos e Representação S/A	No
Norway	Norwegian Ministry of Climate and Environment	No

The changes to the Parties and project participants for the project (voluntary withdrawal of Luso Carbon Fund as a project participant under Portugal and addition of Norwegian Ministry of Climate and Environment as a new project participant under Norway) have been approved by the UNFCCC and are visible on the project page.

A.4. Reference to applied methodologies and standardized baselines

The approved baseline and monitoring methodology applied is **AMS-III.D - Methane recovery in animal manure management systems** (version 14.0) –

https://cdm.unfccc.int/filestorage/C/D/M/CDMWF_AM_73YN6I9YJNAT05U4J7TK9YOUH9W8ER/EB38_repa_n11_AMS_III.D_ver14.pdf?t=NGV8cDJ2NnN5fDD0LLGQuEBRpLmmnQ2QdCEq

Also applied is the associated **Tool to determine project emissions from flaring gases containing methane** (EB 28, Annex 13) - <https://cdm.unfccc.int/methodologies/PAmethodologies/tools/am-tool-06-v1.pdf>

A.5. Crediting period type and duration

The renewable crediting period of 7 years x3 is chosen. The first crediting period starts from 21/08/2010 to 20/08/2017.

SECTION B. Implementation of project activity

B.1. Description of implemented project activity

The technology used is an anaerobic digestion process in which microorganisms break down biodegradable material in the absence of oxygen. The process is widely used to treat wastewater sludge and organic wastes because it provides volume and mass reduction of the input material.

The equipment is based on in one ambient temperature storage covered cells which uses a single-piece liner affixed to a reinforced outer concrete frame. The outer cover consists of a synthetic vinyl membrane which is also fastened to the frame. The liner and cover are sealed together with bolts and iron plate frame. The system also includes a biogas collector piping, from the digester to the flare system. Since the starting of the project, no power generators were installed for in site electricity supply and all the biogas produced has been flared.

The flare is enclosed and a thermocouple installed in the flare measures the combustion temperature every minute. The thermocouple measures and sends the temperature information to a PLC (Programmable Logic Control) system where the minute by minute combustion temperature data is stored. The sparking system in the flare is automatic. Every one second the system sparks. The biogas volume that is directed to the flare is measured cumulatively every minute by a flow meter and also controlled by the PLC, which stores the minute by minute cumulative volume data. The sparking system, the PLC and the control panel are powered by a 12 volts battery charged by solar cells.

The treated effluent is discharged to the existent open lagoons and it is used for irrigation.

During the monitoring period, no electricity was consumed from the grid for the operation of the project facility. The technical parts of the project activity are powered by energy supplied by solar cells. The energy is also stored in 12 volts batteries in case of lack of sun.

The sludge from the digesters was not removed in the monitoring period.

Figure 1 presents a schematic flowchart of the project activity.

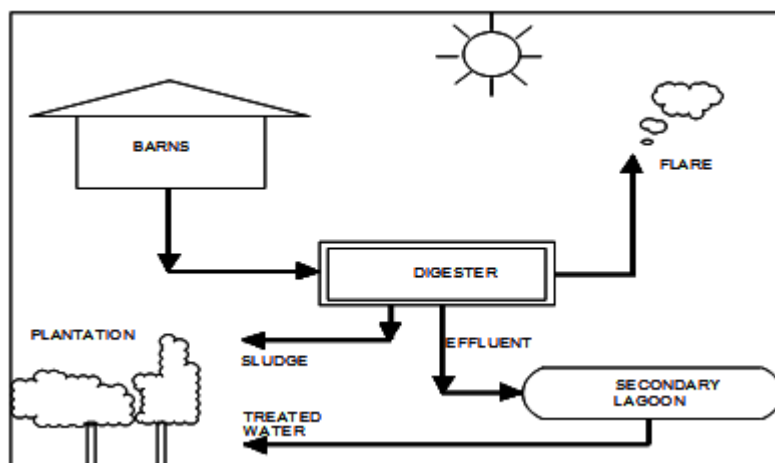


Figure 1- Flowchart of the treatment system

The original PDD was designed with 18 farms, however, five of them stopped its animal production (Fazenda Agua Branca, Fazenda Rodeio - Gleba C, Granja Serra Dourada, Fazenda Santa Catarina and Fazenda Ponte Vermelha). The sites were built but stopped their activity shortly before this monitoring period. Hence, regarding its physical implementation and monitoring, this project is currently made of 13 sites (farms) where each phase of the project implementation as so as the construction, start-up and continuous operation, was concluded in different dates which can be found in Table B1.

Table B.1. – Relevant dates of project implementation

Farm/Site Name	Brascarbon ID	Start Construction	Finish Construction	Start-up and Tests	Monitoring Start Date
Fazenda Agua Branca	BCA-030MS1-05	03/03/2008	02/03/2009	06/04/2009	09/06/2009
Fazenda Rodeio - Gleba C	BCA-031MS1-05	24/11/2008	27/04/2009	01/06/2009	16/07/2009
Fazenda Dragão	BCA-032MS1-05	24/11/2008	27/04/2009	01/06/2009	08/07/2009
Lote 55 e 54	BCA-034MS1-05	10/11/2008	13/04/2009	25/05/2009	01/07/2009
Lote 101	BCA-035MS1-05	10/11/2008	13/04/2009	25/05/2009	01/07/2009
Lote 105	BCA-036MS1-05	10/11/2008	13/04/2009	25/05/2009	01/07/2009
Lote 71	BCA-037MS1-05	10/11/2008	13/04/2009	25/05/2009	01/07/2009
Lote 82	BCA-038MS1-05	10/11/2008	13/04/2009	25/05/2009	01/07/2009
Lote 28 e 27	BCA-039MS1-05	10/11/2008	13/04/2009	25/05/2009	01/07/2009
Fazenda Bela Vista	BCA-040MS1-05	03/03/2008	02/03/2009	06/04/2009	18/06/2009
Granja Serra Dourada	BCA-041MS1-05	03/03/2008	02/03/2009	06/04/2009	17/08/2009
Fazenda Cachoeira	BCA-042MS1-05	03/03/2008	02/03/2009	06/04/2009	01/06/2009
Granja Capivara	BCA-043MS1-05	03/03/2008	02/03/2009	06/04/2009	07/06/2009
Fazenda Sorgatto	BCA-046MS1-05	24/11/2008	27/04/2009	01/06/2009	11/07/2009
Fazenda Santa Catarina	BCA-047MS1-05	03/03/2008	02/03/2009	06/04/2009	01/06/2009
Fazenda Bambú - Quinhão A	BCA-051MS1-05	09/03/2009	10/08/2009	21/09/2009	29/10/2009
Fazenda Folleto	BCA-052MS1-05	24/11/2008	27/04/2009	01/06/2009	01/07/2009
Fazenda Ponte Vermelha	BCA-068MS1-05	24/11/2008	27/04/2009	01/06/2009	01/07/2009

During the current monitoring the project facilities (digester, flare, etc) were operational for all sites. No overhaul times nor downtimes of equipment have occurred and no exchange of equipment was done.

The main events that can be reported regard changes (increases or decreases) in the average number of animals per type and/or in the average animal weight per type reported in the monitoring period when compared to PDD ex-ante estimation. Because the animal population and its characteristics can vary significantly, the project facilities have all been dimensioned in order to accommodate significant variations in the swine population, so the reported changes have not affected the effective operation of the project facilities.

No events or situations that may impact the applicability of the applied methodology occurred during the monitoring period. However, it is important to highlight again that during the current monitoring period, the farms Fazenda Agua Branca, Fazenda Rodeio - Gleba C, Granja Serra Dourada, Fazenda Santa Catarina and Fazenda Ponte Vermelha had their operations suspended and therefore were not accounted for the CER calculation. It is expected that the farms may resume its full operation at some point in time.

B.2. Post-registration changes

B.2.1. Temporary deviations from the registered monitoring plan, applied methodologies or standardized baselines

No temporary deviations have been applied during this monitoring period.

B.2.2. Corrections

No corrections have been applied during this monitoring period.

B.2.3. Changes to the start date of the crediting period

No changes to the start date of the crediting period have been approved during this monitoring period or submitted with this monitoring report.

B.2.4. Inclusion of monitoring plan

No inclusion of a monitoring plan have been made.

B.2.5. Permanent changes to the registered monitoring plan, or permanent deviation of monitoring from the applied methodologies, standardized baselines, or other applied standards or tools

No permanent changes from the registered monitoring plan, applied methodologies or applied standardized baseline have been approved during this monitoring period or submitted with this monitoring report.

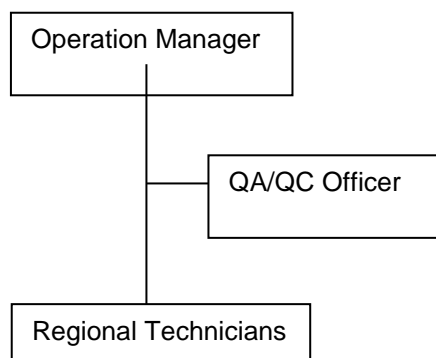
B.2.6. Changes to project design

No changes to the project design of the project activity have been approved during this monitoring period or submitted with this monitoring report.

SECTION C. Description of monitoring system

In order to guarantee compliance with the monitoring plan, Brascarbon elaborated an Operational Procedure Manual composed of Monitoring Operational Procedures (POP) for each parameter to be monitored. Each POP includes detailed instructions to be followed for data collection, equipment handling, preventive/corrective actions to be taken and QA/QC procedures to be applied. If applicable, the POP also includes auxiliary forms that are used for the data collection, with examples and instructions on how they are to be fulfilled.

The organization structure of the Brascarbon Monitoring System is the presented below:



Operation Manager (OM): The OM is the overall responsible for the project operations, including maintenance and monitoring issues. The OM is in charge of divulging the Operational Procedures (POP) to the regional technicians, namely the instructions and procedures for measurement, data collection, site maintenance, preventive and corrective actions and safety and emergency issues. The OM also assures that all data and documents received from the field are filed in the office and is responsible to prepare an electronic copy of all the documents received and save it in the respective folder related to each PDD per farm, performing daily backups of the electronic documents in the server and weekly in an external drive. The OM is also responsible to assure the overall maintenance of the equipment to attend the monitoring system (following the equipment suppliers' recommendations) and, when necessary, provide equipment calibration, replacement or substitution.

Regional Technicians (RT): The RT is responsible for on-site measurements and data collection according to the procedures in the POP. During monitoring site visits for data collection the field technician also assures regular maintenance of the site considering the site area, instrumentation, equipment, cleaning and is trained to identify any problems in the operation of the equipment and proceed with standard repairs on-site. In case of fatal failure, the substitution of the equipment is required immediately by the field technician and the operation department is responsible to provide the immediately substitution of the failed equipment. For the avoidance of doubt, in the event of downtimes of equipment (thermocouple, flow meter, etc), no emission reductions are accounted for the downtime period. Every year and according to the procedures described in POP 11 (Operation General Training), which details, *inter alia*, the programmatic contents, all the RT have a training course (one of the days at a site), which focuses on monitoring, operation of the equipments, maintenance, safety and emergency issues.

Quality Assurance/Quality Control officer (QA/QC officer): The QA/QC officer is responsible to assure the quality control and check of the information collected. When the results are not satisfactory according to the expected, the QA/QC officer recommends additional instructions to be followed in the field such as checking eventual leaks, verifying the components of the flare, valves, batteries etc. This corrective action is implemented by the RT. The QA/QC officer is also responsible for the preparation of all documents related to the CDM project for verification, including elaboration of the monitoring report, emission reductions calculation and preparation of a CD with all relevant information for the verification process (certificates, formularies, POP, on-site official documents, etc). Finally, the QA/QC officer, in coordination with the OM, also controls the calibration of equipments, checking all the calibration certificates, expiration dates and suppliers' recommendations, in order to guarantee the sound calibration of the equipments throughout the monitoring periods.

All documents associated with the monitoring system (POP, associated formularies, confined feed operation documents, calibration certificates, *interalia*) have been sent to the DOE for verification and are available at Brascarbon office for 2 years after the end of the crediting period.

For each parameter, the data generation, collection and reporting procedures, responsibilities and monitoring points are outlined below:

Flare Temperature (Tf)

Operational procedure: POP 01
 Formulary: 01.001 (converted xls from PLC dat file)
 Monitoring point: Inside the enclosed flare structure

The flare temperature is measured every minute by a thermocouple installed in the flare, which sends the temperature data to the PLC (Programmable Logic Control). The minute by minute data is stored in the PLC. The data is recovered monthly by downloading the file through a pen drive connection, and converted to the form 01.001.

In the monitoring period under verification, the thermocouples used in the project are ALUTAL. The thermocouples are calibrated by the supplier and the calibration frequency is according to the supplier requirements, which demands calibration every year of continuous operation counted from the date when the thermocouples are installed. The installation of the thermocouples is under the responsibility of the regional technicians.

Site Inspection and MS%_{i,y}

Operational procedure: POP 02
 Formulary: 02.001 (checklist for site inspection)
 Monitoring point: N/A

The 02.001 checklist for site inspection is the basic orientation to guide the technicians during inspection in the field to follow all items related to the project activity installation. Inspection concerns basic site and digester inspections in terms of lay-out, considering changes in the process flow which can compromise the biogas production and the residual water treatment. Also it controls if the site regulation where the digester is located is in conformity with legal requirements, when applicable. The MS%_{i,y} - Fraction of manure handled in the system during the year, is also included to be inspected during the farm visit. The information is inserted in the form 02.001. The site inspection takes place once every monitoring period, or at least once a year (also, monthly the regional technicians perform a site visit for data collection during which any abnormal situations are reported for further action and preventive maintenance is performed).

Number of animals (N_{LT,y}, N_{da,y} and N_{p,y})

Operational procedure: POP 03
 Formulary: 03.001 and 03.003 (animal control system form)
 Monitoring point: N/A

The calculation of the average number of animals (N_{LT,y}) is done monthly. The form 03.003 (animal control system form) is fulfilled by the confined feed operation proprietary. It presents the daily records of animal entries (ex: purchase; births, internal transfer) and exit (ex: sale, death, internal transfer) and the final daily record of animals (number of animals on the day-1 + entrance on day – exit on day) per animal category (ex: nursery, finishers, gilts, sows, boars). The average number of animals per animal category is then calculated monthly in the same form through the monthly average of animals that have been recorded daily. Using this approach for calculating N_{LT,y}, it is not necessary to calculate separately an N_{da,y} and an N_{p,y}, since the number of days the animal is alive (N_{da,y}) and the number of animals produced per category LT (N_{p,y}) are already implicitly considered in the daily records and taken into account when calculating N_{LT,y}. The form 03.001 is the input for the emission reduction calculation spreadsheet and aggregates the monthly average number of animals per animal category per farm for all farms included in the PDD. The forms 03.003 and 03.001 are checked by the QA/QC officer to guarantee consistency. Other on-site documents including, when available, animal purchase and sale records are used to cross-check the information reported.

Biogas Volume ($BG_{\text{burnt},y}$ and $FV_{\text{RG},h}$)

Operational procedure: POP 04

Formulary: 01.001 (converted xls from PLC dat file) and 04.001 (field data collection)

Monitoring point: In the connection pipe between the digester and the flare

The biogas volume that is directed to the flare is measured cumulatively every minute by the flow meter installed in the connection pipe, which sends the biogas volume data to the PLC. The minute by minute cumulative data is stored in the PLC. The data is recovered monthly by downloading the file through a pen drive connection and converted to form 01.001. During the monthly field collection data, the regional technician also inserts the information of biogas volume flow rate on form 04.001 (field data collection form) based on the 01.001 form information. The biogas volume is measured in wet basis.

The volumetric flow rate of the residual gas ($FV_{\text{RG},h}$) used for the determination of Project Emissions from flaring or combustion of the gas stream ($PE_{\text{flare},y}$) is calculated in normal conditions, monthly dividing the total biogas volume in normal conditions directed to the flare in one month ($BG_{\text{burnt},y \text{ normal}}$) in the period by the total hours of operation in that month ($FV_{\text{RG},h} = BG_{\text{burnt},y \text{ normal}} / \text{total hours}_{,y}$). This approach has been considered accurate for the calculation of $FV_{\text{RG},h}$ since the biogas hourly flow is considered to be constant as there is no artificial blower or pump.

The flow meters used in the project are from ENDRESS+HAUSER, FLOW MONITOR, t- trend, ATT12-A99D314D1 MODEL, type: Thermal Mass Flow. In the monitoring period under verification, the flow meters were calibrated on-site by the Brascarbon Regional Technicians, which act as manufacturer representatives, as they were trained and certified by the supplier/manufacturer Endress Hauser to perform the on-site calibration. The calibration frequency is according to the supplier requirements, which demands calibration every two years.

Methane Content ($W_{\text{CH}_4,y}$ and $fv_{\text{CH}_4,\text{RG},h}$)

Operational procedure: POP 05

Formulary: 04.001 (field data collection)

Monitoring point: In the connection pipe between the digester and the flare

The methane content is measured monthly by the regional technician with a portable digital analyzer (Biogas Check portable model from Geotech/Landtech). The equipment is connected through a hose to a purpose built device in the connection pipe. A biogas sample is taken and after a few seconds the instrument informs the methane content in the equipment panel. The information is inserted in the 04.001 form.

The methane content is measured in wet basis. The monthly monitoring frequency guarantees a 90/10 confidence/precision level (for details, please see Section D.3 – Implementation of sampling plan).

The methane content measured monthly ($W_{\text{CH}_4,y}$) is used as an (average) $fv_{\text{CH}_4,\text{RG},h}$ and used for the determination of Project Emissions from flaring or combustion of the gas stream ($PE_{\text{flare},y}$). This approach has been considered accurate for the calculation of $PE_{\text{flare},y}$ since the monthly monitored $W_{\text{CH}_4,y}$ assures a 90/10 confidence/precision level in the methane concentration measurement.

The portable digital analyzer is calibrated by the supplier and the calibration frequency is according to the supplier requirements, which demands calibration every six months.

Biogas Temperature (T_{biogas})

Operational procedure: POP 06

Formulary: 04.001 (field data collection)

Monitoring point: In the connection pipe between the digester and the flare

The biogas temperature is monitored monthly by the regional technician with a portable digital analyzer (Biogas Check portable model from Geotech/Landtech). The equipment is connected through a temperature probe to a purpose built device in the connection pipe. After inserting the probe the instrument takes a few seconds to inform the biogas temperature. The information is inserted in the 04.001 form.

The portable digital analyzer (and temperature probe attached) is calibrated by the supplier and the calibration frequency is according to the supplier requirements, which demands calibration every six months.

Methane Density (D_{CH_4})

Operational procedure: POP 07
 Formulary: 07.001
 Monitoring point: N/A

The methane density for MD_y calculation is, according to version 18 of the AMS-III.D methodology, calculated ex-post, using the monitored data of biogas pressure and biogas temperature. The frequency of the calculation is monthly and it is done by the QA/QC officer. The information is inserted in the 07.001 form.

For BE_y calculation, the methane density considered is the one indicated in version 18 of the AMS-III.D methodology (0.00067 t/m^3); for the $TM_{RG,h}$ calculation, the methane density considered is the one indicated in EB 28 Annex 13 – Methodological “Tool to determine project emissions from flaring gases containing methane”, step 5 (0.716 kg/m^3).

Flare Efficiency (FE)

Operational procedure: POP 08
 Formulary: 08.001
 Monitoring point: N/A

The (Hourly) Flare Efficiency (FE) it is the efficiency of the methane destruction in the hour h. The flare efficiency is considered 90% when the flare temperature is higher or equal to 500°C for the respective hour (if the flare operation is operating according to the flare specification). If in any specific moment (minute) the flare operation is out of the specification then 50% efficiency is adopted for the respective hour. The flare efficiency is 0% for a specific hour when the flare temperature is less than 500°C in any specific moment (minute) of that hour.

The information of the flare efficiency for each hour during 24 hours per day is registered in the formulary 08.001 and obtained through a macro applied to 01.001 form (form with minute by minute temperature and biogas volume data stored in the PLC). The flare operation is continuously monitored. The hourly flare efficiency is calculated considering the values of each minute of any giving hour. Hence in compliance with the requirements of the Tool for the project emissions from flaring which are also calculated according the minute by minute readings. If any minute of any hour the flare temperature is below 500°C , the flare efficiency is 0% and the entire biogas volume of that hour is discounted.

If all the minutes of an hour are above 500°C then the flare efficiency is 90%. According with the manufacturer specification the flare temperature when above 500°C was always within its specifications so the 50% flare efficiency was never applied.

Hence, each hour either have 90% or 0%, depending on the flare temperature. The project emissions from flare are calculated based on the records of every hour and the correspondent flow of that hour.

To assure that the flare operates adequately a maintenance program is established to guarantee that the flare operation is according to the manufacturer specification

Digester Sludge Removal (QDM)

Operational procedure: POP 09
 Formulary: 09.001
 Monitoring point: N/A

The digester sludge is the heavier fraction of waste, composed by minerals and organic components, in liquid form. This material should be removed from digester and disposed outside the project boundary from time to time, not resulting in methane emissions. When the sludge is removed, the regional technician will follow the POP 09 to certify that the sludge will be spread aerobically in the field. The information is registered on 09.001 form.

Average animal weight (W_{site})

Operational procedure: POP 16

Formulary: 16.001

Monitoring point: N/A

The animal weight is monitored and controlled by a form 16.001 where each animal category is monitored during the year, according to the operational procedure POP 16 – Animal Weight Monitoring.

The data collection is realized quarterly by each farm owner, together with COOASGO (Cooperativa Agropecuária São Gabriel do Oeste) and provided to the PP. COOASGO is the Pig Producers Association to whom the farms contained in the PDD are associated; its main role is to act as a third party responsible for the assurance of all the logistics associated with the swine producers, providing the animal nutrition, genetics and all the overall animal weight.

The quarterly weight of the animals for each producer of the PDD is made following COOASGOs internal procedure, that is not under the PP's control – the association selects the animals based on a random sampling approach applied in each category, since it is infeasible to weight each animal individually in the farms belonging to the project (these farms can more than 5,000 animals each). In addition, each project site presents the actual animal weight by using Brascarbon form 16.001 after a cross-check by the PP, using the real information after each batch of animals exits each farm; the template was designed to quarterly report animal weight per category.

The current practice of swine farms in Brazil is that each farm receives new batches of animals every 5 to 6 months (which is also the average time that a batch stays in a farm) and the producer, together with COOASGO, performs regular and periodical visits to each farm in order to assess and evaluate the correct development of each batch in terms of growing/weighting of the animals (according with what is expected at each growing stage of a given batch). It is important to highlight that both the farm owners and COOASGO rely on the quality of the values measured since their sole professional occupation is the pig production and, therefore, it is within their best interests to have a correct and reliable way to assess the weighting of the animals (which is their business) based on their experience and internal procedures.

Every 5 to 6 months (depending on each batch and farm), the animal batches leave the farms and they are, in this specific situation, 100% weighted by the producers, together with COOASGO – this weighting is undertaken to the totality of animal presented in the batch since the profits associated with the animal production are weight based. According with COOASGO a possible range of +/- 5kg within the animal growing is considered a normal fluctuation and therefore admissible.

Each time a batch exits a farm, COOASGO provides the invoices to attest the feasibility of the figures adopted, allowing a complete and thorough cross-check by PP of all the data used for this parameter.

Quarterly the data from the feed operations are checked and transferred to the form.

Records available in the feed operations will be copied and filed at Brascarbon office and attached with the form 16.001.

The variable monitored: W_{site} .

Emission Reductions – $ER_{y,ex-post}$

Operational procedure: POP 17

Formulary: 17.001 (CER calculation spreadsheet)

Monitoring point: N/A

The emission reductions achieved by the project activity are calculated monthly by the QA/QC officer. The equations can be found in the CER calculation spreadsheet and are detailed in Section E.

Formulated feed rations (FFR)

Operational procedure: POP 14
 Formulary: 14.001
 Monitoring point: N/A

The formulated feed rations used per animal category in the confined feed animal operations are monitored and controlled, to guarantee that the Bo and VS default values applied are accurate. Records available in the feed operations, namely regarding food composition and, when available, regarding food purchases are requested by the regional technician, copied and filed at Brascarbon office. This information is inserted in the formulary 14.001.

Pressure of the biogas at operation conditions (P_{biogas})

Operational procedure: POP 13
 Formulary: 04.001
 Monitoring point: In the connection pipe between the digester and the flare

The biogas pressure is measured monthly by the regional technician with a portable digital analyzer (Biogas Check portable model from Geotech/Landtech). The equipment is connected through a hose to a purpose built device in the connection pipe. After a few seconds after starting the instrument it informs the biogas pressure in its panel. The information is inserted in the 04.001 form.

The portable digital analyzer is calibrated by the supplier and the calibration frequency is according to the supplier requirements, which demands calibration every six months.

GENETIC SOURCE

Operational procedure: POP 15
 Formulary: 15.001
 Monitoring point: N/A

The genetic source origin of the livestock in the confined feed animal operations is monitored and controlled, to guarantee that the Bo and VS default values applied are accurate. Records available in the feed operations, regarding the livestock genetic sources are requested (purchase notes if available), copied and filed at Brascarbon office. The genetic source information is inserted in the formulary 15.001.

Methane mass flow rate in the residual gas ($TM_{\text{RG,h}}$)

Operational procedure: POP 17
 Formulary: 17.001 (CER calculation spreadsheet)
 Monitoring point: N/A

The residual mass flow rate is calculated according to the formula presented in the "Tool to determine project emissions from flaring gases containing methane" EB 28, Annex 13. The calculation is done monthly by the QA/QC officer using the monthly average calculated value of $FV_{\text{RG,h}}$ and the monthly monitored value of $fV_{\text{CH}_4,\text{RG,h}}$ and both values are referred to in the same basis (wet). This approach is considered accurate for the calculation of $PE_{\text{flare,y}}$.

Number of days where the treatment plant was operational (nd_y)

Operational procedure: POP 24
 Formulary: 17.001 (CER Calculation spreadsheet)
 Monitoring point: N/A

The number of days where the treatment plant is operational is monitored taking into account the number of temperature and biogas measurements stored in the CLP. As both the temperature and biogas volume are measured every minute, the information stored in the CLP allows for the calculation of the number of hours where the treatment plant was operation (H_{total} , obtained from form 08.001) and consequently the number of days (dividing the total hours of operation by the number of hours in the day – 24). The calculation is done every month.

Electricity consumed from the grid by the project (E) (kWh)

Operational procedure: POP 22

Formulary: 22.001

Monitoring point: N/A

The entire project didn't use energy from the grid in the current monitoring period. The eventual use of energy is monitored and registered in the formulary 22.001 by the regional technician. All energy demand consumed in the project is supplied by batteries charged by solar cells which is an advantage for sunny countries, like Brazil. The energy for the temperature controlling system PLC (Programmable Logic Controller) and the sparkling system is supplied by a 12 volts battery. The autonomy for the batteries is of 240 hours and each system works independently (PLC and sparkling system). There are no blowers, pneumatic or electric valves, pumps, compressors, etc, in the project. The flow system is operated by gravity and atmospherically.

SECTION D. Data and parameters**D.1. Data and parameters fixed ex ante**

Data/parameter:	VS _{default}
Unit	kg dry matter/animal/day
Description	Default value for the volatile solid excretion rate per day on a dry-matter basis for a defined livestock population
Source of data	Obtained from IPCC2006, vol 4, chapter 10, Tables 10A-7 and 10A-8.
Value(s) applied)	0.3 for Market Swine 0.46 for Breeding Swine 0.46 for Gilts
Choice of data or measurement methods and procedures	Genetics and nutrition adopted for these farms as so as in western Europe. More details or information of the genetics can be obtained at the producers or at the Associação Brasileira dos Criadores de Suínos (Brazilian Swine Association). http://www.abcs.org.br/ The genetic source of production operation is originated from Annex I; The farm uses formulated feed rations optimized for the various stage of growth and animals category; The formulated feed rations can be validated through on farm record keeping; The project specific animal weights are more similar to developed country IPCC default values. Used of factors as defined in IPCC2006, chapter 10, volume 4, since that there is no national data for the default value for the volatile solid excretion rate per day on a dry-matter basis for a defined livestock population.

Purpose of data	Baseline emissions
Additional comments	<p>According to paragraph 10 (d) from AMS-III.D version 18.0, VS values applicable to developed countries can be used provided the following four conditions are satisfied:</p> <ul style="list-style-type: none"> • <i>The genetic source of the livestock originates from an Annex I Party;</i> Genetics and nutrition adopted for these farms as so as in western Europe. More details or information of the genetics can be obtained at the producers or at the Associação Brasileira dos Criadores de Suínos (Brazilian Swine Association) – http://www.abcs.org.br/ and also at COOASGO (Cooperativa Agropecuária São Gabriel do Oeste). <p>The genetic source of the livestock is therefore in compliance with this methodology requirement, which can be confirmed and verified by the genetic documents of the animals of each farm. These evidences were provided and assessed to assure their applicability to this requirement.</p> <ul style="list-style-type: none"> • <i>The farm uses formulated feed rations (FFR) which are optimized for the various animal(s), stage of growth, category, weight gain/productivity and/or genetics;</i> The formulated feed rations are created according with the characteristics of the animals, their stage of growth, category, weight gain and genetics. Each farm possesses their FFR composition according with the type of animal(s) accommodated, which was confirmed and verified. These evidences were provided and assessed to assure their applicability this requirement. • <i>The use of FFR can be validated (through on-farm record keeping, feed supplier, etc.);</i> The formulated feed rations are part of the management system of the farms and therefore, each site possesses on-farm records which attest the FFR used. These evidences are also monitored on a monthly basis, according monitoring plan for the parameter FFR, as described in section B.7.1, and the PP internal procedure POP 14. • <i>The project specific animal weights are more similar to developed country IPCC default values.</i> The W_{site} value considered for each category of swine is the result of an average weight of the animals of all farms included in the project, and this value was applied in the baseline calculation. <p><i>Finishers</i> is the animal category that represents the totality of all animals from the farms included in this PDD. Finishers are considered to be “market swine” and presented an average weight of 90kg among all farms included in the PDD by the time of the project’s registration (and this was the value adopted for the parameter W_{site}). Taking into account the figures presented in Tables 10 A-7 and 10 A-8 from the 2006 IPCC Guidelines for <i>National Greenhouse Gas Inventories, Volume 4, chapter 10</i>, the weights that are more similar to the project situation are those from the Western Europe region (50 kg) – the values form Latin America (28 kg), where the project is located, is even lower than Western Europe’s.</p> <p>This situation is also observed for the remaining four categories of swine (nursery and boars for market swine, gilts and sows for breeding swine): the values are more similar to those adopted in Western Europe than in Latin America, especially regarding the Breeding Swine (gilts and sows) and in the Market Swine (boars) which presented an average weight of 210kg and 230 kg respectively, among all farms included in the PDD by the time of the project’s registration (and this was the value adopted for the parameter W_{site}). Taking into account the figures presented in Tables 10 A-7 and 10 A-8 from the 2006 IPCC Guidelines for <i>National Greenhouse Gas Inventories, Volume 4, chapter 10</i>, the weights that are more similar to the project situation are those from the Western Europe region (198kg for Breeding Swine and 50 kg for Market Swine) – the values form Latin America (28kg for both classes of Breeding and Market Swine), where the project is located, is much lower than Western Europe’s. Only in the category nursery (also Market Swine), which roughly represents 16% of all animals from the farms included in this PDD, have an average weight of 20 kg, closer to the Latin America values than the Western Europe values.</p> <p>Therefore, is fair to consider that “<i>the project specific animal weights are more similar to developed country IPCC default values</i>” condition is fulfilled and that the VS adopted values for developed counties is in full compliance with the methodology requirements.</p>

Data / Parameter:	MCF_j
Unit:	%
Description:	Annual methane conversion factor for the baseline animal waste management system "j".
Source of data:	Obtained from IPCC2006, vol. 4, chapter 10, Tables 10.17.
Value(s) applied:	79%
Choice of data or measurement methods and procedures	N/A
Purpose of data:	Baseline emissions
Additional comment:	No comments

Data / Parameter:	$MS\%_{BI,j}$
Unit:	Fraction
Description:	Fraction of manure handled in baseline animal manure management system "j".
Source of data:	Project proponents
Value(s) applied:	1
Choice of data or measurement methods and procedures	N/A
Purpose of data:	Baseline emissions
Additional comment:	No comments

Data / Parameter:	GWP_{CH_4}
Unit:	tCO ₂ e/tCH ₄
Description:	Global warming potential of CH ₄
Source of data:	EB69 Annex 3 (version 01.0) / IPCC Fourth Assessment Report: Climate Change 2007 (AR4)
Value(s) applied:	25
Choice of data or measurement methods and procedures	N/A
Purpose of data:	Baseline emissions and Project Emissions
Additional comment:	No comments

Data / Parameter:	B _{0,LT}
Unit:	m ³ CH ₄ /kg dm
Description:	Maximum methane producing potential of the volatile solid generated for animal type "LT".
Source of data:	IPCC 2006, Tables 10-A7 and 10-A8.
Value(s) applied:	Sows (breeding swine more than 200 kg mass): 0.45 Finishers (market swine more than 50 kg mass): 0.45 Nursery: 0.45 Boars and Gilts (market swine more than 100 kg mass): 0.45
Choice of data or measurement methods and procedures	<p>Default value according to IPCC 2006 in western Europe region. Genetics and nutrition adopted for these farms as so as in western Europe. More details or information of the genetics can be obtained at the producers or at the Associação Brasileira dos Criadores de Suínos (Brazilian Swine Association). http://www.abcs.org.br/</p> <p>The genetic source of production operation is originated from Annex I; The farm uses formulated feed rations optimized for the various stage of growth and animals category; The formulated feed ratings can be validated through on farm record keeping; The project specific animal weights are more similar to developed country IPCC default values.</p> <p>Used of factors as defined in IPCC2006, chapter 10, volume 4, since that there is no national data for the Maximum methane producing potential of the volatile solid generated for animal type "LT"</p>

Purpose of data:	Baseline emissions
Additional comment:	<p>According to paragraph 10 (d) from AMS-III.D version 18.0, VS values applicable to developed countries can be used provided the following four conditions are satisfied:</p> <ul style="list-style-type: none"> • <i>The genetic source of the livestock originates from an Annex I Party;</i> Genetics and nutrition adopted for these farms as so as in western Europe. More details or information of the genetics can be obtained at the producers or at the Associação Brasileira dos Criadores de Suínos (Brazilian Swine Association) – http://www.abcs.org.br/ and also at COOASGO (Cooperativa Agropecuária São Gabriel do Oeste). <p>The genetic source of the livestock is therefore in compliance with this methodology requirement, which can be confirmed and verified by the genetic documents of the animals of each farm. These evidences were provided and assessed to assure their applicability to this requirement.</p> <ul style="list-style-type: none"> • <i>The farm uses formulated feed rations (FFR) which are optimized for the various animal(s), stage of growth, category, weight gain/productivity and/or genetics;</i> The formulated feed rations are created according with the characteristics of the animals, their stage of growth, category, weight gain and genetics. Each farm possesses their FFR composition according with the type of animal(s) accommodated, which was confirmed and verified. These evidences were provided and assessed to assure their applicability this requirement. • <i>The use of FFR can be validated (through on-farm record keeping, feed supplier, etc.);</i> The formulated feed rations are part of the management system of the farms and therefore, each site possesses on-farm records which attest the FFR used. These evidences are also monitored on a monthly basis, according monitoring plan for the parameter FFR, as described in section B.7.1, and the PP internal procedure POP 14. • <i>The project specific animal weights are more similar to developed country IPCC default values.</i> The W_{site} value considered for each category of swine is the result of an average weight of the animals of all farms included in the project, and this value was applied in the baseline calculation. <p><i>Finishers</i> is the animal category that represents the totality of all animals from the farms included in this PDD. Finishers are considered to be “market swine” and presented an average weight of 90kg among all farms included in the PDD by the time of the project’s registration (and this was the value adopted for the parameter W_{site}). Taking into account the figures presented in Tables 10 A-7 and 10 A-8 from the 2006 IPCC Guidelines for <i>National Greenhouse Gas Inventories, Volume 4, chapter 10</i>, the weights that are more similar to the project situation are those from the Western Europe region (50 kg) – the values form Latin America (28 kg), where the project is located, is even lower than Western Europe’s.</p> <p>This situation is also observed for the remaining four categories of swine (nursery and boars for market swine, gilts and sows for breeding swine): the values are more similar to those adopted in Western Europe than in Latin America, especially regarding the Breeding Swine (gilts and sows) and in the Market Swine (boars) which presented an average weight of 210kg and 230 kg respectively, among all farms included in the PDD by the time of the project’s registration (and this was the value adopted for the parameter W_{site}). Taking into account the figures presented in Tables 10 A-7 and 10 A-8 from the 2006 IPCC Guidelines for <i>National Greenhouse Gas Inventories, Volume 4, chapter 10</i>, the weights that are more similar to the project situation are those from the Western Europe region (198kg for Breeding Swine and 50 kg for Market Swine) – the values form Latin America (28kg for both classes of Breeding and Market Swine), where the project is located, is much lower than Western Europe’s. Only in the category nursery (also Market Swine), which roughly represents 16% of all animals from the farms included in this PDD, have an average weight of 20 kg, closer to the Latin America values than the Western Europe values.</p> <p>Therefore, is fair to consider that “<i>the project specific animal weights are more similar to developed country IPCC default values</i>” condition is fulfilled and that the VS adopted values for developed counties is in full compliance with the methodology requirements.</p>

Data / Parameter:	W_{default}
Unit:	Kg
Description:	Default average animal weight of a defined population at the project site.
Source of data:	IPCC 2006, Tables 10-A7 and 10-A8.
Value(s) applied:	<p>Sows (breeding swine): 198 kg Finishers (market swine): 50 kg Nursery (market swine): 50 kg Boars (market swine): 50 kg Gilts (breeding swine): 198 kg</p>
Choice of data or measurement methods and procedures	<p>Default value according to IPCC 2006 in western Europe region. Genetics and nutrition adopted for these farms as so as in Western Europe. More details or information of the genetics can be obtained at the producers or at the Associação Brasileira dos Criadores de Suínos (Brazilian Swine Association). http://www.abcs.org.br/</p> <p>The genetic source of production operation is originated from Annex I; The farm uses formulated feed rations optimized for the various stage of growth and animals category; The formulated feed ratings can be validated through on farm record keeping; The project specific animal weights are more similar to developed country IPCC default values.</p> <p>Used of factors as defined in IPCC2006, chapter 10, volume 4, since that there is no national data for the default average animal weight of a defined population at the project site.</p>

Purpose of data:	Baseline emissions
Additional comment:	<p>The four conditions to apply W_{default} value of developed countries are fully applicable to developed countries can be used provided the following four conditions are satisfied:</p> <ul style="list-style-type: none"> • <i>The genetic source of the livestock originates from an Annex I Party;</i> Genetics and nutrition adopted for these farms as so as in western Europe. More details or information of the genetics can be obtained at the producers or at the Associação Brasileira dos Criadores de Suínos (Brazilian Swine Association) – http://www.abcs.org.br/ and also at COOASGO (Cooperativa Agropecuária São Gabriel do Oeste). <p>The genetic source of the livestock is therefore in compliance with this methodology requirement, which can be confirmed and verified by the genetic documents of the animals of each farm. These evidences were provided and assessed to assure their applicability to this requirement.</p> <ul style="list-style-type: none"> • <i>The farm uses formulated feed rations (FFR) which are optimized for the various animal(s), stage of growth, category, weight gain/productivity and/or genetics;</i> The formulated feed rations are created according with the characteristics of the animals, their stage of growth, category, weight gain and genetics. Each farm possesses their FFR composition according with the type of animal(s) accommodated, which was confirmed and verified. These evidences were provided and assessed to assure their applicability this requirement. • <i>The use of FFR can be validated (through on-farm record keeping, feed supplier, etc.);</i> The formulated feed rations are part of the management system of the farms and therefore, each site possesses on-farm records which attest the FFR used. These evidences are also monitored on a monthly basis, according monitoring plan for the parameter FFR, as described in section B.7.1, and the PP internal procedure POP 14. • <i>The project specific animal weights are more similar to developed country IPCC default values.</i> The W_{site} value considered for each category of swine is the result of an average weight of the animals of all farms included in the project, and this value was applied in the baseline calculation. <p><i>Finishers</i> is the animal category that represents the totality of all animals from the farms included in this PDD. Finishers are considered to be “market swine” and presented an average weight of 90kg among all farms included in the PDD by the time of the project’s registration (and this was the value adopted for the parameter W_{site}). Taking into account the figures presented in Tables 10 A-7 and 10 A-8 from the 2006 IPCC Guidelines for <i>National Greenhouse Gas Inventories, Volume 4, chapter 10</i>, the weights that are more similar to the project situation are those from the Western Europe region (50 kg) – the values from Latin America (28 kg), where the project is located, is even lower than Western Europe’s.</p> <p>This situation is also observed for the remaining four categories of swine (nursery and boars for market swine, gilts and sows for breeding swine): the values are more similar to those adopted in Western Europe than in Latin America, especially regarding the Breeding Swine (gilts and sows) and in the Market Swine (boars) which presented an average weight of 210kg and 230 kg respectively, among all farms included in the PDD by the time of the project’s registration (and this was the value adopted for the parameter W_{site}). Taking into account the figures presented in Tables 10 A-7 and 10 A-8 from the 2006 IPCC Guidelines for <i>National Greenhouse Gas Inventories, Volume 4, chapter 10</i>, the weights that are more similar to the project situation are those from the Western Europe region (198kg for Breeding Swine and 50 kg for Market Swine) – the values from Latin America (28kg for both classes of Breeding and Market Swine), where the project is located, is much lower than Western Europe’s. Only in the category nursery (also Market Swine), which roughly represents 16% of all animals from the farms included in this PDD, have an average weight of 20 kg, closer to the Latin America values than the Western Europe values. Therefore, is fair to consider that “<i>the project specific animal weights are more similar to developed country IPCC default values</i>” condition is fulfilled and that the VS adopted values for developed countries is in full compliance with the methodology requirements..</p>

Data / Parameter:	UF _b
Unit:	No unit applied
Description:	Model correction factor to account for model uncertainties
Source of data:	Reference: FCCC/SBSTA/2003/10/Add.2, page 25.
Value(s) applied:	0.94
Choice of data or measurement methods and procedures	N/A
Purpose of data:	Baseline emissions
Additional comment:	No comments

D.2. Data and parameters monitored

Data / Parameter:	T _f																																																																																																																																																																																																																																											
Unit:	°C																																																																																																																																																																																																																																											
Description:	Combustion temperature of the flare																																																																																																																																																																																																																																											
Measured/ Calculated / Default:	Measured																																																																																																																																																																																																																																											
Source of data:	Brascarbon Monitoring Report System (form 01.001)																																																																																																																																																																																																																																											
Value(s) of monitored parameter:	The aggregate values of T _f (hours with T _f above 500° C and hours with T _f below 500°C) can be found in the spreadsheet calculation file "CER Calculation MR04 - BCA-BRA-05" in the folder <i>MDy-PEpower,y,ex-post</i> .																																																																																																																																																																																																																																											
Monitoring equipment:	<table border="1"> <thead> <tr> <th colspan="7">Thermocouple ⁽¹⁾</th> </tr> <tr> <th>Farm name</th><th>Site ID</th><th>Thermocouple Serial Number ⁽²⁾</th><th>Calibration Certification Number</th><th>Calibration Date</th><th>Installation Date ⁽³⁾</th><th>Expiration Date</th></tr> </thead> <tbody> <tr> <td rowspan="3">Fazenda Dragão</td><td rowspan="3">BCA-032MS1-05</td><td>TM-14502/01</td><td>021/10-17</td><td>21/03/10</td><td>23/03/10</td><td>20/03/12</td></tr> <tr> <td>166921</td><td>48283-3</td><td>02/01/12</td><td>19/03/12</td><td>18/03/13</td></tr> <tr> <td>166961</td><td>CB-0384 13</td><td>12/03/13</td><td>17/03/13</td><td>16/03/14</td></tr> <tr> <td rowspan="3">Lote 55 e 54</td><td rowspan="3">BCA-034MS1-05</td><td>TM-14492/7</td><td>021/10-7</td><td>21/03/10</td><td>23/03/10</td><td>20/03/12</td></tr> <tr> <td>166922</td><td>48283-4</td><td>02/01/12</td><td>19/03/12</td><td>18/03/13</td></tr> <tr> <td>166947</td><td>CB-0379 13</td><td>14/03/13</td><td>17/03/13</td><td>16/03/14</td></tr> <tr> <td rowspan="3">Lote 101</td><td rowspan="3">BCA-035MS1-05</td><td>TM 15036/9</td><td>062/10-5</td><td>15/05/10</td><td>17/05/10</td><td>14/05/12</td></tr> <tr> <td>166923</td><td>48283-5</td><td>02/01/12</td><td>19/03/12</td><td>18/03/13</td></tr> <tr> <td>166959</td><td>CB-0382 13</td><td>12/03/13</td><td>17/03/13</td><td>16/03/14</td></tr> <tr> <td rowspan="3">Lote 105</td><td rowspan="3">BCA-036MS1-05</td><td>TM-14492/15</td><td>021/10-14</td><td>21/03/10</td><td>23/03/10</td><td>20/03/12</td></tr> <tr> <td>166924</td><td>48283-6</td><td>02/01/12</td><td>19/03/12</td><td>18/03/13</td></tr> <tr> <td>166946</td><td>CB-0369 13</td><td>12/03/13</td><td>17/03/13</td><td>16/03/13</td></tr> <tr> <td rowspan="3">Lote 71</td><td rowspan="3">BCA-037MS1-05</td><td>TM-14492/5</td><td>021/10-5</td><td>21/03/10</td><td>23/03/10</td><td>20/03/12</td></tr> <tr> <td>166925</td><td>48283-7</td><td>02/01/12</td><td>19/03/12</td><td>18/03/13</td></tr> <tr> <td>166963</td><td>CB-0386 13</td><td>12/03/13</td><td>17/03/13</td><td>16/03/14</td></tr> <tr> <td rowspan="3">Lote 82</td><td rowspan="3">BCA-038MS1-05</td><td>TM-14492/11</td><td>021/10-10</td><td>21/03/10</td><td>23/03/10</td><td>20/03/12</td></tr> <tr> <td>166926</td><td>48283-8</td><td>02/01/12</td><td>19/03/12</td><td>18/03/13</td></tr> <tr> <td>166948</td><td>CB-0371 13</td><td>12/03/13</td><td>17/03/13</td><td>16/03/14</td></tr> <tr> <td rowspan="3">Lote 28 e 27</td><td rowspan="3">BCA-039MS1-05</td><td>TM-14492/6</td><td>021/10-6</td><td>21/03/10</td><td>23/03/10</td><td>20/03/12</td></tr> <tr> <td>166927</td><td>48283-9</td><td>02/01/12</td><td>19/03/12</td><td>18/03/13</td></tr> <tr> <td>166940</td><td>CB-0363 13</td><td>12/03/13</td><td>17/03/13</td><td>16/03/14</td></tr> <tr> <td rowspan="3">Fazenda Bela Vista</td><td rowspan="3">BCA-040MS1-05</td><td>TM-14492/2</td><td>021/10-2</td><td>21/03/10</td><td>23/03/10</td><td>20/03/12</td></tr> <tr> <td>166928</td><td>48283-10</td><td>02/01/12</td><td>19/03/12</td><td>18/03/13</td></tr> <tr> <td>166960</td><td>CB-0383 13</td><td>12/03/13</td><td>17/03/13</td><td>16/03/14</td></tr> <tr> <td rowspan="3">Fazenda Cachoeira</td><td rowspan="3">BCA-042MS1-05</td><td>TM-14492/14</td><td>021/10-13</td><td>21/03/10</td><td>23/03/10</td><td>20/03/12</td></tr> <tr> <td>166930</td><td>48283-12</td><td>02/01/12</td><td>19/03/12</td><td>18/03/13</td></tr> <tr> <td>166936</td><td>CB-0359 13</td><td>12/03/13</td><td>17/03/13</td><td>16/03/14</td></tr> <tr> <td rowspan="3">Granja Capivara</td><td rowspan="3">BCA-043MS1-05</td><td>TM-15036/16</td><td>062/10-10</td><td>15/05/10</td><td>17/05/10</td><td>14/05/12</td></tr> <tr> <td>166931</td><td>48283-13</td><td>02/01/12</td><td>19/03/12</td><td>18/03/13</td></tr> <tr> <td>166956</td><td>CB-0379 13</td><td>12/03/13</td><td>17/03/13</td><td>16/03/14</td></tr> <tr> <td rowspan="3">Fazenda Sorgatto</td><td rowspan="3">BCA-046MS1-05</td><td>TM-14492/16</td><td>021/10-15</td><td>21/03/10</td><td>23/03/10</td><td>20/03/12</td></tr> <tr> <td>166933</td><td>48283-15</td><td>02/01/12</td><td>19/03/12</td><td>18/03/13</td></tr> <tr> <td>166953</td><td>CB-0376 13</td><td>12/03/13</td><td>17/03/13</td><td>16/03/14</td></tr> <tr> <td rowspan="3">Fazenda Bambú - Quinhão A</td><td rowspan="3">BCA-051MS1-05</td><td>TM-14492/4</td><td>021/10-4</td><td>21/03/10</td><td>23/03/10</td><td>20/03/12</td></tr> <tr> <td>166932</td><td>48283-14</td><td>02/01/12</td><td>19/03/12</td><td>18/03/13</td></tr> <tr> <td>166954</td><td>CB-0377 13</td><td>12/03/13</td><td>17/03/13</td><td>16/03/14</td></tr> <tr> <td rowspan="3">Fazenda Folleto</td><td rowspan="3">BCA-052MS1-05</td><td>TM-14492/12</td><td>021/10-11</td><td>21/03/10</td><td>23/03/10</td><td>20/03/12</td></tr> <tr> <td>166936</td><td>48283-18</td><td>02/01/12</td><td>19/03/12</td><td>18/03/13</td></tr> <tr> <td>166943</td><td>CB-0366 13</td><td>12/03/13</td><td>17/03/13</td><td>16/03/14</td></tr> </tbody> </table> <p>(1) Monitoring equipment type: Standard Thermocouple from ALUTAL</p> <p>(2) Accuracy class: ± 1.5°C or ± 0.25%</p> <p>(3) Calibration frequency: Every year of continuous operation (counted from the date of installation)</p>	Thermocouple ⁽¹⁾							Farm name	Site ID	Thermocouple Serial Number ⁽²⁾	Calibration Certification Number	Calibration Date	Installation Date ⁽³⁾	Expiration Date	Fazenda Dragão	BCA-032MS1-05	TM-14502/01	021/10-17	21/03/10	23/03/10	20/03/12	166921	48283-3	02/01/12	19/03/12	18/03/13	166961	CB-0384 13	12/03/13	17/03/13	16/03/14	Lote 55 e 54	BCA-034MS1-05	TM-14492/7	021/10-7	21/03/10	23/03/10	20/03/12	166922	48283-4	02/01/12	19/03/12	18/03/13	166947	CB-0379 13	14/03/13	17/03/13	16/03/14	Lote 101	BCA-035MS1-05	TM 15036/9	062/10-5	15/05/10	17/05/10	14/05/12	166923	48283-5	02/01/12	19/03/12	18/03/13	166959	CB-0382 13	12/03/13	17/03/13	16/03/14	Lote 105	BCA-036MS1-05	TM-14492/15	021/10-14	21/03/10	23/03/10	20/03/12	166924	48283-6	02/01/12	19/03/12	18/03/13	166946	CB-0369 13	12/03/13	17/03/13	16/03/13	Lote 71	BCA-037MS1-05	TM-14492/5	021/10-5	21/03/10	23/03/10	20/03/12	166925	48283-7	02/01/12	19/03/12	18/03/13	166963	CB-0386 13	12/03/13	17/03/13	16/03/14	Lote 82	BCA-038MS1-05	TM-14492/11	021/10-10	21/03/10	23/03/10	20/03/12	166926	48283-8	02/01/12	19/03/12	18/03/13	166948	CB-0371 13	12/03/13	17/03/13	16/03/14	Lote 28 e 27	BCA-039MS1-05	TM-14492/6	021/10-6	21/03/10	23/03/10	20/03/12	166927	48283-9	02/01/12	19/03/12	18/03/13	166940	CB-0363 13	12/03/13	17/03/13	16/03/14	Fazenda Bela Vista	BCA-040MS1-05	TM-14492/2	021/10-2	21/03/10	23/03/10	20/03/12	166928	48283-10	02/01/12	19/03/12	18/03/13	166960	CB-0383 13	12/03/13	17/03/13	16/03/14	Fazenda Cachoeira	BCA-042MS1-05	TM-14492/14	021/10-13	21/03/10	23/03/10	20/03/12	166930	48283-12	02/01/12	19/03/12	18/03/13	166936	CB-0359 13	12/03/13	17/03/13	16/03/14	Granja Capivara	BCA-043MS1-05	TM-15036/16	062/10-10	15/05/10	17/05/10	14/05/12	166931	48283-13	02/01/12	19/03/12	18/03/13	166956	CB-0379 13	12/03/13	17/03/13	16/03/14	Fazenda Sorgatto	BCA-046MS1-05	TM-14492/16	021/10-15	21/03/10	23/03/10	20/03/12	166933	48283-15	02/01/12	19/03/12	18/03/13	166953	CB-0376 13	12/03/13	17/03/13	16/03/14	Fazenda Bambú - Quinhão A	BCA-051MS1-05	TM-14492/4	021/10-4	21/03/10	23/03/10	20/03/12	166932	48283-14	02/01/12	19/03/12	18/03/13	166954	CB-0377 13	12/03/13	17/03/13	16/03/14	Fazenda Folleto	BCA-052MS1-05	TM-14492/12	021/10-11	21/03/10	23/03/10	20/03/12	166936	48283-18	02/01/12	19/03/12	18/03/13	166943	CB-0366 13	12/03/13	17/03/13	16/03/14
Thermocouple ⁽¹⁾																																																																																																																																																																																																																																												
Farm name	Site ID	Thermocouple Serial Number ⁽²⁾	Calibration Certification Number	Calibration Date	Installation Date ⁽³⁾	Expiration Date																																																																																																																																																																																																																																						
Fazenda Dragão	BCA-032MS1-05	TM-14502/01	021/10-17	21/03/10	23/03/10	20/03/12																																																																																																																																																																																																																																						
		166921	48283-3	02/01/12	19/03/12	18/03/13																																																																																																																																																																																																																																						
		166961	CB-0384 13	12/03/13	17/03/13	16/03/14																																																																																																																																																																																																																																						
Lote 55 e 54	BCA-034MS1-05	TM-14492/7	021/10-7	21/03/10	23/03/10	20/03/12																																																																																																																																																																																																																																						
		166922	48283-4	02/01/12	19/03/12	18/03/13																																																																																																																																																																																																																																						
		166947	CB-0379 13	14/03/13	17/03/13	16/03/14																																																																																																																																																																																																																																						
Lote 101	BCA-035MS1-05	TM 15036/9	062/10-5	15/05/10	17/05/10	14/05/12																																																																																																																																																																																																																																						
		166923	48283-5	02/01/12	19/03/12	18/03/13																																																																																																																																																																																																																																						
		166959	CB-0382 13	12/03/13	17/03/13	16/03/14																																																																																																																																																																																																																																						
Lote 105	BCA-036MS1-05	TM-14492/15	021/10-14	21/03/10	23/03/10	20/03/12																																																																																																																																																																																																																																						
		166924	48283-6	02/01/12	19/03/12	18/03/13																																																																																																																																																																																																																																						
		166946	CB-0369 13	12/03/13	17/03/13	16/03/13																																																																																																																																																																																																																																						
Lote 71	BCA-037MS1-05	TM-14492/5	021/10-5	21/03/10	23/03/10	20/03/12																																																																																																																																																																																																																																						
		166925	48283-7	02/01/12	19/03/12	18/03/13																																																																																																																																																																																																																																						
		166963	CB-0386 13	12/03/13	17/03/13	16/03/14																																																																																																																																																																																																																																						
Lote 82	BCA-038MS1-05	TM-14492/11	021/10-10	21/03/10	23/03/10	20/03/12																																																																																																																																																																																																																																						
		166926	48283-8	02/01/12	19/03/12	18/03/13																																																																																																																																																																																																																																						
		166948	CB-0371 13	12/03/13	17/03/13	16/03/14																																																																																																																																																																																																																																						
Lote 28 e 27	BCA-039MS1-05	TM-14492/6	021/10-6	21/03/10	23/03/10	20/03/12																																																																																																																																																																																																																																						
		166927	48283-9	02/01/12	19/03/12	18/03/13																																																																																																																																																																																																																																						
		166940	CB-0363 13	12/03/13	17/03/13	16/03/14																																																																																																																																																																																																																																						
Fazenda Bela Vista	BCA-040MS1-05	TM-14492/2	021/10-2	21/03/10	23/03/10	20/03/12																																																																																																																																																																																																																																						
		166928	48283-10	02/01/12	19/03/12	18/03/13																																																																																																																																																																																																																																						
		166960	CB-0383 13	12/03/13	17/03/13	16/03/14																																																																																																																																																																																																																																						
Fazenda Cachoeira	BCA-042MS1-05	TM-14492/14	021/10-13	21/03/10	23/03/10	20/03/12																																																																																																																																																																																																																																						
		166930	48283-12	02/01/12	19/03/12	18/03/13																																																																																																																																																																																																																																						
		166936	CB-0359 13	12/03/13	17/03/13	16/03/14																																																																																																																																																																																																																																						
Granja Capivara	BCA-043MS1-05	TM-15036/16	062/10-10	15/05/10	17/05/10	14/05/12																																																																																																																																																																																																																																						
		166931	48283-13	02/01/12	19/03/12	18/03/13																																																																																																																																																																																																																																						
		166956	CB-0379 13	12/03/13	17/03/13	16/03/14																																																																																																																																																																																																																																						
Fazenda Sorgatto	BCA-046MS1-05	TM-14492/16	021/10-15	21/03/10	23/03/10	20/03/12																																																																																																																																																																																																																																						
		166933	48283-15	02/01/12	19/03/12	18/03/13																																																																																																																																																																																																																																						
		166953	CB-0376 13	12/03/13	17/03/13	16/03/14																																																																																																																																																																																																																																						
Fazenda Bambú - Quinhão A	BCA-051MS1-05	TM-14492/4	021/10-4	21/03/10	23/03/10	20/03/12																																																																																																																																																																																																																																						
		166932	48283-14	02/01/12	19/03/12	18/03/13																																																																																																																																																																																																																																						
		166954	CB-0377 13	12/03/13	17/03/13	16/03/14																																																																																																																																																																																																																																						
Fazenda Folleto	BCA-052MS1-05	TM-14492/12	021/10-11	21/03/10	23/03/10	20/03/12																																																																																																																																																																																																																																						
		166936	48283-18	02/01/12	19/03/12	18/03/13																																																																																																																																																																																																																																						
		166943	CB-0366 13	12/03/13	17/03/13	16/03/14																																																																																																																																																																																																																																						
Measuring/ Reading/ Recording frequency:	Every 1 minute measurement and registration by the PLC. Data is collected monthly from the field.																																																																																																																																																																																																																																											
Calculation method (if applicable):	N/A																																																																																																																																																																																																																																											
QA/QC procedures:	The information of the temperature is managed by the use of the form 01.001. The form 01.001 is extracted from the PLC, where the continuous information is stored and is further checked by the QA/QC officer. The calibration certificates are managed to guarantee the thermocouples are calibrated during all the monitoring period. The QA/QC officer checks one month before the expiration date, to proceed with the new calibration.																																																																																																																																																																																																																																											

Purpose of data:	Baseline Emissions and Project Emissions
Additional comment:	No comments

Data / Parameter:	SITE INSPECTION
Unit:	Documents
Description:	Inspection on the site considering relevant regulation and the infra-structure of the site
Measured/ Calculated / Default:	Documented
Source of data:	Brascarbon Monitoring Report System (form 02.001)
Value(s) of monitored parameter:	During the current monitoring period all sites were inspected and no relevant changes were observed. Also, all the licenses and documents were in place and it was confirmed that all the manure produced ($MS\%_{oi,y}$) has been directed to the project activity facilities.
Monitoring equipment:	N/A
Measuring/ Reading/ Recording frequency:	Annually/Every monitoring period
Calculation method (if applicable):	N/A
QA/QC procedures:	The site inspection is monitored by the use of the form 02.001 to help the regional technician during the monitoring visit and is further checked by the QA/QC officer, together with the on-site documents and all documents received from the field, namely the confined animal production official documents.
Purpose of data:	N/A
Additional comment:	No comments

Data / Parameter:	$N_{LT,y}$
Unit:	Number
Description:	Annual average number of animals of type "LT" in year "y"
Measured/ Calculated / Default:	Calculated
Source of data:	Brascarbon Monitoring Report System (forms 03.003 and 03.001)
Value(s) of monitored parameter:	The values of $N_{LT,y}$ can be found in the spreadsheet calculation file "CER Calculation MR04 - BCA-BRA-05" in the folder <i>BEy ex-post – PEy ex-post</i> .
Monitoring equipment:	N/A
Measuring/ Reading/ Recording frequency:	Monthly
Calculation method (if applicable):	The calculation of the average number of animals ($N_{LT,y}$) is done monthly. The form 03.003 (animal control system form) is fulfilled by the confined feed operation proprietary. It presents the daily records of animal entries (ex: purchase; births, internal transfer) and exit (ex: sale, death, internal transfer) and the final daily record of animals (number of animals on the day-1 + entrance on day – exit on day) per animal category (ex: nursery, finishers, gilts, sows, boars). The average number of animals per animal category is then calculated monthly in the same form through the monthly average of animals that have been recorded daily. Using this approach for calculating $N_{LT,y}$, it is not necessary to calculate separately an $N_{da,y}$ and an $N_{p,y}$, since the number of days the animal is alive ($N_{da,y}$) and the number of animals produced per category LT ($N_{p,y}$) are already implicitly considered in the daily records and taken into account when calculating $N_{LT,y}$. The form 03.001 is the input for the emission reduction calculation spreadsheet and aggregates the monthly average number of animals per animal category per farm for all farms included in the PDD.
QA/QC procedures:	The forms 03.003 and 03.001 are checked by the QA/QC officer to guarantee consistency. Other on-site documents including, when available, animal purchase and sale records are used to cross-check the information reported.
Purpose of data:	Baseline Emissions
Additional comment:	No comments

Data / Parameter:	$N_{da,y}$
Unit:	Number
Description:	Number of days animal is alive in the farm, in year "y"
Measured/ Calculated / Default:	Measured
Source of data:	Brascarbon Monitoring Report System (forms 03.003 and 03.001)
Value(s) of monitored parameter:	Please see explanation in data/parameter $N_{LT,y}$
Monitoring equipment:	N/A
Measuring/ Reading/ Recording frequency:	Daily
Calculation method (if applicable):	N/A
QA/QC procedures:	Please see explanation in data/parameter $N_{LT,y}$
Purpose of data:	Baseline Emissions
Additional comment:	No comments

Data / Parameter:	$N_{p,y}$
Unit:	Number
Description:	Number of animals produced annually of type "LT" in year "y"
Measured/ Calculated / Default:	Measured
Source of data:	Brascarbon Monitoring Report System (forms 03.003 and 03.001)
Value(s) of monitored parameter:	Please see explanation in data/parameter $N_{LT,y}$
Monitoring equipment:	N/A
Measuring/ Reading/ Recording frequency:	Daily
Calculation method (if applicable):	N/A
QA/QC procedures:	Please see explanation in data/parameter $N_{LT,y}$
Purpose of data:	Baseline Emissions
Additional comment:	No comments

Data / Parameter:	BG _{burnt,y}																																																																																				
Unit:	m ³																																																																																				
Description:	Biogas flared or used as a fuel in the year y.																																																																																				
Measured/ Calculated / Default:	Measured on wet basis																																																																																				
Source of data:	Brascarbon Monitoring Report System (form 01.001)																																																																																				
Value(s) of monitored parameter:	The values of BG _{burnt,y} can be found in the spreadsheet calculation file "CER Calculation MR04 - BCA-BRA-05" in the folder MDy-PEpower,y,ex-post.																																																																																				
Monitoring equipment:	<p style="text-align: center;">Flow Meter ⁽¹⁾⁽²⁾ Calibration Control</p> <table border="1"> <thead> <tr> <th>Farm name</th><th>Site ID</th><th>Flow Meter Serial Number</th><th>Calibration Certification Number</th><th>Installation Calibration Date (3)</th><th>Expiration Date</th></tr> </thead> <tbody> <tr> <td>Fazenda Dragão</td><td>BCA-032MS1-05</td><td>A700693412A</td><td>EN 10204 - 2.1</td><td>27/04/11 21/04/13 15/04/15</td><td>26/04/13 20/04/15 14/04/17</td></tr> <tr> <td>Lote 55 e 54</td><td>BCA-034MS1-05</td><td>A700613412A</td><td>EN 10204 - 2.1</td><td>27/04/11 21/04/13 15/04/15</td><td>26/04/13 20/04/15 14/04/17</td></tr> <tr> <td>Lote 101</td><td>BCA-035MS1-05</td><td>A700753412A</td><td>EN 10204 - 2.1</td><td>27/04/11 21/04/13 15/04/15</td><td>26/04/13 20/04/15 14/04/17</td></tr> <tr> <td>Lote 105</td><td>BCA-036MS1-05</td><td>A700663412A</td><td>EN 10204 - 2.1</td><td>27/04/11 21/04/13 15/04/15</td><td>26/04/13 20/04/15 14/04/17</td></tr> <tr> <td>Lote 71</td><td>BCA-037MS1-05</td><td>A700683412A</td><td>EN 10204 - 2.1</td><td>27/04/11 21/04/13 15/04/15</td><td>26/04/13 20/04/15 14/04/17</td></tr> <tr> <td>Lote 82</td><td>BCA-038MS1-05</td><td>A700633412A</td><td>EN 10204 - 2.1</td><td>27/04/11 21/04/13 15/04/15</td><td>26/04/13 20/04/15 14/04/17</td></tr> <tr> <td>Lote 28 e 27</td><td>BCA-039MS1-05</td><td>A700583412A</td><td>EN 10204 - 2.1</td><td>27/04/11 21/04/13 15/04/15</td><td>26/04/13 20/04/15 14/04/17</td></tr> <tr> <td>Fazenda Bela Vista</td><td>BCA-040MS1-05</td><td>A700623412A</td><td>EN 10204 - 2.1</td><td>27/04/11 21/04/13 15/04/15</td><td>26/04/13 20/04/15 14/04/17</td></tr> <tr> <td>Fazenda Cachoeira</td><td>BCA-042MS1-05</td><td>A700553412A</td><td>EN 10204 - 2.1</td><td>27/04/11 21/04/13 15/04/15</td><td>26/04/13 20/04/15 14/04/17</td></tr> <tr> <td>Granja Capivara</td><td>BCA-043MS1-05</td><td>A700563412A</td><td>EN 10204 - 2.1</td><td>27/04/11 21/04/13 15/04/15</td><td>26/04/13 20/04/15 14/04/17</td></tr> <tr> <td>Fazenda Sorgatto</td><td>BCA-046MS1-05</td><td>A700833412A</td><td>EN 10204 - 2.1</td><td>27/04/11 21/04/13 15/04/15</td><td>26/04/13 20/04/15 14/04/17</td></tr> <tr> <td>Fazenda Bambú - Quinhão A</td><td>BCA-051MS1-05</td><td>A700713412A</td><td>EN 10204 - 2.1</td><td>27/04/11 21/04/13 15/04/15</td><td>26/04/13 20/04/15 14/04/17</td></tr> <tr> <td>Fazenda Folleto</td><td>BCA-052MS1-05</td><td>A700573412A</td><td>EN 10204 - 2.1</td><td>27/04/11 21/04/13 15/04/15</td><td>26/04/13 20/04/15 14/04/17</td></tr> </tbody> </table> <p>(1) Monitoring equipment type: Endress+Hauser thermal mass flow meter t-trend - ATT12</p> <p>(2) Accuracy class: ± 5% of factory full scale</p> <p>(3) Calibration frequency: Every 2 years of continuous operation (counted from the date of installation)</p>	Farm name	Site ID	Flow Meter Serial Number	Calibration Certification Number	Installation Calibration Date (3)	Expiration Date	Fazenda Dragão	BCA-032MS1-05	A700693412A	EN 10204 - 2.1	27/04/11 21/04/13 15/04/15	26/04/13 20/04/15 14/04/17	Lote 55 e 54	BCA-034MS1-05	A700613412A	EN 10204 - 2.1	27/04/11 21/04/13 15/04/15	26/04/13 20/04/15 14/04/17	Lote 101	BCA-035MS1-05	A700753412A	EN 10204 - 2.1	27/04/11 21/04/13 15/04/15	26/04/13 20/04/15 14/04/17	Lote 105	BCA-036MS1-05	A700663412A	EN 10204 - 2.1	27/04/11 21/04/13 15/04/15	26/04/13 20/04/15 14/04/17	Lote 71	BCA-037MS1-05	A700683412A	EN 10204 - 2.1	27/04/11 21/04/13 15/04/15	26/04/13 20/04/15 14/04/17	Lote 82	BCA-038MS1-05	A700633412A	EN 10204 - 2.1	27/04/11 21/04/13 15/04/15	26/04/13 20/04/15 14/04/17	Lote 28 e 27	BCA-039MS1-05	A700583412A	EN 10204 - 2.1	27/04/11 21/04/13 15/04/15	26/04/13 20/04/15 14/04/17	Fazenda Bela Vista	BCA-040MS1-05	A700623412A	EN 10204 - 2.1	27/04/11 21/04/13 15/04/15	26/04/13 20/04/15 14/04/17	Fazenda Cachoeira	BCA-042MS1-05	A700553412A	EN 10204 - 2.1	27/04/11 21/04/13 15/04/15	26/04/13 20/04/15 14/04/17	Granja Capivara	BCA-043MS1-05	A700563412A	EN 10204 - 2.1	27/04/11 21/04/13 15/04/15	26/04/13 20/04/15 14/04/17	Fazenda Sorgatto	BCA-046MS1-05	A700833412A	EN 10204 - 2.1	27/04/11 21/04/13 15/04/15	26/04/13 20/04/15 14/04/17	Fazenda Bambú - Quinhão A	BCA-051MS1-05	A700713412A	EN 10204 - 2.1	27/04/11 21/04/13 15/04/15	26/04/13 20/04/15 14/04/17	Fazenda Folleto	BCA-052MS1-05	A700573412A	EN 10204 - 2.1	27/04/11 21/04/13 15/04/15	26/04/13 20/04/15 14/04/17
Farm name	Site ID	Flow Meter Serial Number	Calibration Certification Number	Installation Calibration Date (3)	Expiration Date																																																																																
Fazenda Dragão	BCA-032MS1-05	A700693412A	EN 10204 - 2.1	27/04/11 21/04/13 15/04/15	26/04/13 20/04/15 14/04/17																																																																																
Lote 55 e 54	BCA-034MS1-05	A700613412A	EN 10204 - 2.1	27/04/11 21/04/13 15/04/15	26/04/13 20/04/15 14/04/17																																																																																
Lote 101	BCA-035MS1-05	A700753412A	EN 10204 - 2.1	27/04/11 21/04/13 15/04/15	26/04/13 20/04/15 14/04/17																																																																																
Lote 105	BCA-036MS1-05	A700663412A	EN 10204 - 2.1	27/04/11 21/04/13 15/04/15	26/04/13 20/04/15 14/04/17																																																																																
Lote 71	BCA-037MS1-05	A700683412A	EN 10204 - 2.1	27/04/11 21/04/13 15/04/15	26/04/13 20/04/15 14/04/17																																																																																
Lote 82	BCA-038MS1-05	A700633412A	EN 10204 - 2.1	27/04/11 21/04/13 15/04/15	26/04/13 20/04/15 14/04/17																																																																																
Lote 28 e 27	BCA-039MS1-05	A700583412A	EN 10204 - 2.1	27/04/11 21/04/13 15/04/15	26/04/13 20/04/15 14/04/17																																																																																
Fazenda Bela Vista	BCA-040MS1-05	A700623412A	EN 10204 - 2.1	27/04/11 21/04/13 15/04/15	26/04/13 20/04/15 14/04/17																																																																																
Fazenda Cachoeira	BCA-042MS1-05	A700553412A	EN 10204 - 2.1	27/04/11 21/04/13 15/04/15	26/04/13 20/04/15 14/04/17																																																																																
Granja Capivara	BCA-043MS1-05	A700563412A	EN 10204 - 2.1	27/04/11 21/04/13 15/04/15	26/04/13 20/04/15 14/04/17																																																																																
Fazenda Sorgatto	BCA-046MS1-05	A700833412A	EN 10204 - 2.1	27/04/11 21/04/13 15/04/15	26/04/13 20/04/15 14/04/17																																																																																
Fazenda Bambú - Quinhão A	BCA-051MS1-05	A700713412A	EN 10204 - 2.1	27/04/11 21/04/13 15/04/15	26/04/13 20/04/15 14/04/17																																																																																
Fazenda Folleto	BCA-052MS1-05	A700573412A	EN 10204 - 2.1	27/04/11 21/04/13 15/04/15	26/04/13 20/04/15 14/04/17																																																																																
Measuring/ Reading/ Recording frequency:	Every 1 minute measurement and registration by the PLC. Data is collected monthly from the field.																																																																																				
Calculation method (if applicable):	The biogas volume measurement is done on wet basis. As the flow meter registers the biogas that is directed to the flare cumulatively (and that is also the data registered in the PLC), the BG _{burnt,y} for a certain period is calculated by differential with the previous biogas volume reading.																																																																																				
QA/QC procedures:	The information of the biogas volume is managed by the use of the form 01.001. The form 01.001 is extracted from the PLC, where the continuous information is stored and is further checked by the QA/QC officer. The calibration certificates are managed to guarantee the flow meters are calibrated during all the monitoring period. The QA/QC officer checks one month before the expiration date, to proceed with the new calibration.																																																																																				
Purpose of data:	Baseline Emissions																																																																																				
Additional comment:	No comments																																																																																				

Data / Parameter:	$W_{CH_4,y}$																																																																																										
Unit:	Fraction																																																																																										
Description:	Methane content in biogas in the year “y”																																																																																										
Measured/ Calculated / Default:	Measured on wet basis																																																																																										
Source of data:	Brascarbon Monitoring Report System (form 04.001)																																																																																										
Value(s) of monitored parameter:	The values of $W_{CH_4,y}$ can be found in the spreadsheet calculation file “CER Calculation MR04 - BCA-BRA-05” in the folder MDy-PEpower,y,ex-post.																																																																																										
Monitoring equipment:	<p style="text-align: center;">Biogas Analyser ⁽¹⁾⁽²⁾ Calibration Control</p> <table border="1"> <thead> <tr> <th>Farm Name</th><th>Site ID</th><th>Biogas Analyser Serial Number</th><th>Calibration Certificate Number</th><th>Last Calibration Date ⁽³⁾</th><th>Expiration Date</th></tr> </thead> <tbody> <tr><td>Fazenda Dragão</td><td>BCA-032MS1-05</td><td></td><td></td><td></td><td></td></tr> <tr><td>Lote 55 e 54</td><td>BCA-034MS1-05</td><td></td><td></td><td></td><td></td></tr> <tr><td>Lote 101</td><td>BCA-035MS1-05</td><td></td><td></td><td></td><td></td></tr> <tr><td>Lote 105</td><td>BCA-036MS1-05</td><td>BM 11042</td><td>BM11042_5/1543</td><td>29/05/2012</td><td>29/11/2012</td></tr> <tr><td>Lote 71</td><td>BCA-037MS1-05</td><td>BM 11042</td><td>BM11042_5/1502</td><td>26/11/2012</td><td>25/05/2013</td></tr> <tr><td>Lote 82</td><td>BCA-038MS1-05</td><td>BM 11042</td><td>BM11042_5/2225</td><td>23/05/2013</td><td>22/11/2013</td></tr> <tr><td>Lote 28 e 27</td><td>BCA-039MS1-05</td><td>BM 11042</td><td>BM11042_5/2235</td><td>22/11/2013</td><td>21/05/2014</td></tr> <tr><td>Fazenda Bela Vista</td><td>BCA-040MS1-05</td><td>BM 11042</td><td>BM11042_5/2240</td><td>20/05/2014</td><td>19/11/2014</td></tr> <tr><td>Fazenda Cachoeira</td><td>BCA-042MS1-05</td><td>BM 11042</td><td>BM11042_5/2430</td><td>17/11/2014</td><td>16/05/2015</td></tr> <tr><td>Granja Capivara</td><td>BCA-043MS1-05</td><td>BM 11042</td><td>BM11042_5/2550</td><td>10/05/2015</td><td>09/11/2015</td></tr> <tr><td>Fazenda Sorgatto</td><td>BCA-046MS1-05</td><td></td><td></td><td></td><td></td></tr> <tr><td>Fazenda Bambú - Quinhão A</td><td>BCA-051MS1-05</td><td></td><td></td><td></td><td></td></tr> <tr><td>Fazenda Folleto</td><td>BCA-052MS1-05</td><td></td><td></td><td></td><td></td></tr> </tbody> </table> <table border="1"> <tr> <td>(1) Monitoring equipment type:</td><td>Biogas Check Portable Digital Analyzer from Geotech/Landtech</td></tr> <tr> <td>(2) Accuracy class:</td><td> <ul style="list-style-type: none"> • CH₄: ± 0.5% from 0-5% CH₄ content; ± 1.0% from 5-15% CH₄ content; ± 3.0% from 15%-full scale CH₄ content • Temperature: ± 0.2°C (Biogas check analyzer accuracy) ± 0.5°C (temperature probe accuracy) • Pressure: ± 4mbar typically and ±15 mbar maximum </td></tr> <tr> <td>(3) Calibration frequency:</td><td>Every 6 months</td></tr> </table>	Farm Name	Site ID	Biogas Analyser Serial Number	Calibration Certificate Number	Last Calibration Date ⁽³⁾	Expiration Date	Fazenda Dragão	BCA-032MS1-05					Lote 55 e 54	BCA-034MS1-05					Lote 101	BCA-035MS1-05					Lote 105	BCA-036MS1-05	BM 11042	BM11042_5/1543	29/05/2012	29/11/2012	Lote 71	BCA-037MS1-05	BM 11042	BM11042_5/1502	26/11/2012	25/05/2013	Lote 82	BCA-038MS1-05	BM 11042	BM11042_5/2225	23/05/2013	22/11/2013	Lote 28 e 27	BCA-039MS1-05	BM 11042	BM11042_5/2235	22/11/2013	21/05/2014	Fazenda Bela Vista	BCA-040MS1-05	BM 11042	BM11042_5/2240	20/05/2014	19/11/2014	Fazenda Cachoeira	BCA-042MS1-05	BM 11042	BM11042_5/2430	17/11/2014	16/05/2015	Granja Capivara	BCA-043MS1-05	BM 11042	BM11042_5/2550	10/05/2015	09/11/2015	Fazenda Sorgatto	BCA-046MS1-05					Fazenda Bambú - Quinhão A	BCA-051MS1-05					Fazenda Folleto	BCA-052MS1-05					(1) Monitoring equipment type:	Biogas Check Portable Digital Analyzer from Geotech/Landtech	(2) Accuracy class:	<ul style="list-style-type: none"> • CH₄: ± 0.5% from 0-5% CH₄ content; ± 1.0% from 5-15% CH₄ content; ± 3.0% from 15%-full scale CH₄ content • Temperature: ± 0.2°C (Biogas check analyzer accuracy) ± 0.5°C (temperature probe accuracy) • Pressure: ± 4mbar typically and ±15 mbar maximum 	(3) Calibration frequency:	Every 6 months
Farm Name	Site ID	Biogas Analyser Serial Number	Calibration Certificate Number	Last Calibration Date ⁽³⁾	Expiration Date																																																																																						
Fazenda Dragão	BCA-032MS1-05																																																																																										
Lote 55 e 54	BCA-034MS1-05																																																																																										
Lote 101	BCA-035MS1-05																																																																																										
Lote 105	BCA-036MS1-05	BM 11042	BM11042_5/1543	29/05/2012	29/11/2012																																																																																						
Lote 71	BCA-037MS1-05	BM 11042	BM11042_5/1502	26/11/2012	25/05/2013																																																																																						
Lote 82	BCA-038MS1-05	BM 11042	BM11042_5/2225	23/05/2013	22/11/2013																																																																																						
Lote 28 e 27	BCA-039MS1-05	BM 11042	BM11042_5/2235	22/11/2013	21/05/2014																																																																																						
Fazenda Bela Vista	BCA-040MS1-05	BM 11042	BM11042_5/2240	20/05/2014	19/11/2014																																																																																						
Fazenda Cachoeira	BCA-042MS1-05	BM 11042	BM11042_5/2430	17/11/2014	16/05/2015																																																																																						
Granja Capivara	BCA-043MS1-05	BM 11042	BM11042_5/2550	10/05/2015	09/11/2015																																																																																						
Fazenda Sorgatto	BCA-046MS1-05																																																																																										
Fazenda Bambú - Quinhão A	BCA-051MS1-05																																																																																										
Fazenda Folleto	BCA-052MS1-05																																																																																										
(1) Monitoring equipment type:	Biogas Check Portable Digital Analyzer from Geotech/Landtech																																																																																										
(2) Accuracy class:	<ul style="list-style-type: none"> • CH₄: ± 0.5% from 0-5% CH₄ content; ± 1.0% from 5-15% CH₄ content; ± 3.0% from 15%-full scale CH₄ content • Temperature: ± 0.2°C (Biogas check analyzer accuracy) ± 0.5°C (temperature probe accuracy) • Pressure: ± 4mbar typically and ±15 mbar maximum 																																																																																										
(3) Calibration frequency:	Every 6 months																																																																																										
Measuring/ Reading/ Recording frequency:	The monitoring frequency is monthly and guarantees a 90/10 confidence/precision level (for details, please see Section D.3 – Implementation of sampling plan).																																																																																										
Calculation method (if applicable):	The methane content measurement is done on wet basis.																																																																																										
QA/QC procedures:	The information of the methane content is managed by the use of the form 04.001 (formulary for field data collection). The calibration certificates are managed to guarantee the portable analyzers are calibrated during all the monitoring period. The QA/QC officer checks one month before the expiration date stated in the calibration certificates to proceed with the new calibration.																																																																																										
Purpose of data:	Baseline Emissions																																																																																										
Additional comment:	No comments																																																																																										

Data / Parameter:	T _{biogas}																																																																																										
Unit:	°C																																																																																										
Description:	Temperature of the biogas at ambient conditions																																																																																										
Measured/ Calculated / Default:	Measured																																																																																										
Source of data:	Brascarbon Monitoring Report System (form 04.001)																																																																																										
Value(s) of monitored parameter:	The values of T _{biogas} can be found in the spreadsheet calculation file "CER Calculation MR04 - BCA-BRA-05" in the folder <i>MDy-PEpower,y,ex-post</i> .																																																																																										
Monitoring equipment:	<p style="text-align: center;">Biogas Analyser ⁽¹⁾⁽²⁾ Calibration Control</p> <table border="1"> <thead> <tr> <th>Farm Name</th><th>Site ID</th><th>Biogas Analyser Serial Number</th><th>Calibration Certificate Number</th><th>Last Calibration Date ⁽³⁾</th><th>Expiration Date</th></tr> </thead> <tbody> <tr><td>Fazenda Dragão</td><td>BCA-032MS1-05</td><td></td><td></td><td></td><td></td></tr> <tr><td>Lote 55 e 54</td><td>BCA-034MS1-05</td><td></td><td></td><td></td><td></td></tr> <tr><td>Lote 101</td><td>BCA-035MS1-05</td><td></td><td></td><td></td><td></td></tr> <tr><td>Lote 105</td><td>BCA-036MS1-05</td><td>BM 11042</td><td>BM11042_5/1543</td><td>29/05/2012</td><td>29/11/2012</td></tr> <tr><td>Lote 71</td><td>BCA-037MS1-05</td><td>BM 11042</td><td>BM11042_5/1502</td><td>26/11/2012</td><td>25/05/2013</td></tr> <tr><td>Lote 82</td><td>BCA-038MS1-05</td><td>BM 11042</td><td>BM11042_5/2225</td><td>23/05/2013</td><td>22/11/2013</td></tr> <tr><td>Lote 28 e 27</td><td>BCA-039MS1-05</td><td>BM 11042</td><td>BM11042_5/2235</td><td>22/11/2013</td><td>21/05/2014</td></tr> <tr><td>Fazenda Bela Vista</td><td>BCA-040MS1-05</td><td>BM 11042</td><td>BM11042_5/2240</td><td>20/05/2014</td><td>19/11/2014</td></tr> <tr><td>Fazenda Cachoeira</td><td>BCA-042MS1-05</td><td>BM 11042</td><td>BM11042_5/2430</td><td>17/11/2014</td><td>16/05/2015</td></tr> <tr><td>Granja Capivara</td><td>BCA-043MS1-05</td><td>BM 11042</td><td>BM11042_5/2550</td><td>10/05/2015</td><td>09/11/2015</td></tr> <tr><td>Fazenda Sorgatto</td><td>BCA-046MS1-05</td><td></td><td></td><td></td><td></td></tr> <tr><td>Fazenda Bambú - Quinhão A</td><td>BCA-051MS1-05</td><td></td><td></td><td></td><td></td></tr> <tr><td>Fazenda Folleto</td><td>BCA-052MS1-05</td><td></td><td></td><td></td><td></td></tr> </tbody> </table> <table border="1"> <tbody> <tr> <td>(1) Monitoring equipment type:</td><td>Biogas Check Portable Digital Analyzer from Geotech/Landtech</td></tr> <tr> <td>(2) Accuracy class:</td><td> <ul style="list-style-type: none"> • CH₄: ± 0.5% from 0-5% CH₄ content; ± 1.0% from 5-15% CH₄ content; ± 3.0% from 15%-full scale CH₄ content • Temperature: ± 0.2°C (Biogas check analyzer accuracy) ± 0.5°C (temperature probe accuracy) • Pressure: ± 4mbar typically and ±15 mbar maximum </td></tr> <tr> <td>(3) Calibration frequency:</td><td>Every 6 months</td></tr> </tbody> </table>	Farm Name	Site ID	Biogas Analyser Serial Number	Calibration Certificate Number	Last Calibration Date ⁽³⁾	Expiration Date	Fazenda Dragão	BCA-032MS1-05					Lote 55 e 54	BCA-034MS1-05					Lote 101	BCA-035MS1-05					Lote 105	BCA-036MS1-05	BM 11042	BM11042_5/1543	29/05/2012	29/11/2012	Lote 71	BCA-037MS1-05	BM 11042	BM11042_5/1502	26/11/2012	25/05/2013	Lote 82	BCA-038MS1-05	BM 11042	BM11042_5/2225	23/05/2013	22/11/2013	Lote 28 e 27	BCA-039MS1-05	BM 11042	BM11042_5/2235	22/11/2013	21/05/2014	Fazenda Bela Vista	BCA-040MS1-05	BM 11042	BM11042_5/2240	20/05/2014	19/11/2014	Fazenda Cachoeira	BCA-042MS1-05	BM 11042	BM11042_5/2430	17/11/2014	16/05/2015	Granja Capivara	BCA-043MS1-05	BM 11042	BM11042_5/2550	10/05/2015	09/11/2015	Fazenda Sorgatto	BCA-046MS1-05					Fazenda Bambú - Quinhão A	BCA-051MS1-05					Fazenda Folleto	BCA-052MS1-05					(1) Monitoring equipment type:	Biogas Check Portable Digital Analyzer from Geotech/Landtech	(2) Accuracy class:	<ul style="list-style-type: none"> • CH₄: ± 0.5% from 0-5% CH₄ content; ± 1.0% from 5-15% CH₄ content; ± 3.0% from 15%-full scale CH₄ content • Temperature: ± 0.2°C (Biogas check analyzer accuracy) ± 0.5°C (temperature probe accuracy) • Pressure: ± 4mbar typically and ±15 mbar maximum 	(3) Calibration frequency:	Every 6 months
Farm Name	Site ID	Biogas Analyser Serial Number	Calibration Certificate Number	Last Calibration Date ⁽³⁾	Expiration Date																																																																																						
Fazenda Dragão	BCA-032MS1-05																																																																																										
Lote 55 e 54	BCA-034MS1-05																																																																																										
Lote 101	BCA-035MS1-05																																																																																										
Lote 105	BCA-036MS1-05	BM 11042	BM11042_5/1543	29/05/2012	29/11/2012																																																																																						
Lote 71	BCA-037MS1-05	BM 11042	BM11042_5/1502	26/11/2012	25/05/2013																																																																																						
Lote 82	BCA-038MS1-05	BM 11042	BM11042_5/2225	23/05/2013	22/11/2013																																																																																						
Lote 28 e 27	BCA-039MS1-05	BM 11042	BM11042_5/2235	22/11/2013	21/05/2014																																																																																						
Fazenda Bela Vista	BCA-040MS1-05	BM 11042	BM11042_5/2240	20/05/2014	19/11/2014																																																																																						
Fazenda Cachoeira	BCA-042MS1-05	BM 11042	BM11042_5/2430	17/11/2014	16/05/2015																																																																																						
Granja Capivara	BCA-043MS1-05	BM 11042	BM11042_5/2550	10/05/2015	09/11/2015																																																																																						
Fazenda Sorgatto	BCA-046MS1-05																																																																																										
Fazenda Bambú - Quinhão A	BCA-051MS1-05																																																																																										
Fazenda Folleto	BCA-052MS1-05																																																																																										
(1) Monitoring equipment type:	Biogas Check Portable Digital Analyzer from Geotech/Landtech																																																																																										
(2) Accuracy class:	<ul style="list-style-type: none"> • CH₄: ± 0.5% from 0-5% CH₄ content; ± 1.0% from 5-15% CH₄ content; ± 3.0% from 15%-full scale CH₄ content • Temperature: ± 0.2°C (Biogas check analyzer accuracy) ± 0.5°C (temperature probe accuracy) • Pressure: ± 4mbar typically and ±15 mbar maximum 																																																																																										
(3) Calibration frequency:	Every 6 months																																																																																										
Measuring/ Reading/ Recording frequency:	Monthly																																																																																										
Calculation method (if applicable):	N/A																																																																																										
QA/QC procedures:	The information of the biogas temperature is managed by the use of the form 04.001 (formulary for field data collection) and is further checked by the QA/QC officer. The calibration certificates are managed to guarantee the portable analyzers are calibrated during all the monitoring period. The QA/QC officer checks one month before the expiration date stated in the calibration certificates to proceed with the new calibration.																																																																																										
Purpose of data:	Baseline Emissions																																																																																										
Additional comment:	No comments																																																																																										

Data / Parameter:	D _{CH₄,y}
Unit:	t / m ³
Description:	Density of the methane combusted
Measured/ Calculated / Default:	Calculated
Source of data:	Brascarbon Monitoring Report System
Value(s) of monitored parameter:	The values of D _{CH₄,y} can be found in the spreadsheet calculation file "CER Calculation MR04 - BCA-BRA-05" in the folder <i>MDy-PEpower,y,ex-post</i> .
Monitoring equipment:	N/A
Measuring/ Reading/ Recording frequency:	Monthly
Calculation method (if applicable):	$D_{CH_4,y} = \frac{P_n}{\frac{R_u}{MM_{RG,h}} \times T_n}$ <p> D_{CH₄,y}: Density of methane in the biogas (kg/m³) P_n: Pressure of biogas (Pa) R_u: Universal Gas Constant (8314 Pa.m³/Kmol.K) MM_{RG,h}: Molecular mass of methane (16.04 kg/kmol) T_n: Biogas temperature (K) </p>
QA/QC procedures:	The density calculation is done by the QA/QC officer based on monitoring data and it is further confirmed if the calculated value is within the interval of standard density values reported for methane density.
Purpose of data:	Baseline Emissions
Additional comment:	No comments

Data / Parameter:	FE
Unit:	%
Description:	Flare Efficiency
Measured/ Calculated / Default:	Calculated
Source of data:	Brascarbon Monitoring Report System (form 08.001)
Value(s) of monitored parameter:	<p>The aggregate monthly values of FE can be found in the spreadsheet calculation file "CER Calculation MR04 - BCA-BRA-05" in the folder <i>MDy-PEpower,y,ex-post</i>.</p> <p>Please note that during the current monitoring period, the flare always operated within the range of manufacturer specifications when above 500°C, hence the level of 50% flare efficiency has not been applied.</p>
Monitoring equipment:	<p>Enclosed flare is used in the entire project.</p> <p>All data and parameters that are required to monitor the flare operation within the range of operating conditions according to manufacturer's specifications are continuously monitored.</p>
Measuring/ Reading/ Recording frequency:	Monthly. Every 1 minute measurement and registration by a CLP of flare temperature and biogas flow rate. Data is recovered monthly for Flare Efficiency hourly calculation.
Calculation method (if applicable):	<p>For the hourly flare efficiency calculation, the following is considered:</p> <ul style="list-style-type: none"> • If flare temperature $\geq 500^{\circ}\text{C}$ for all minutes in an hour, then 90% efficiency is considered for that hour; • If flare temperature $\geq 500^{\circ}\text{C}$ but the flare is operating out of manufacturer specification in any minute, then 50% efficiency is considered for that hour; • If flare temperature $< 500^{\circ}\text{C}$ in any minute, then 0% efficiency is considered for that hour; <p>The information of the flare efficiency for each hour during 24 hours per day is registered in the formulary 08.001 and obtained through a macro applied to 01.001 form (form with minute by minute temperature and biogas volume data stored in the PLC). The flare operation is continuously monitored. The hourly flare efficiency is calculated considering the values of each minute of any giving hour. Hence in compliance with the requirements of the Tool for the project emissions from flaring which are also calculated according the minute by minute readings. If any minute of any hour the flare temperature is below 500°C, the flare efficiency is 0% and the entire biogas volume of that hour is discounted.</p> <p>If all the minutes of an hour are above 500°C then the flare efficiency is 90%. According with the manufacturer specification the flare temperature when above 500°C was always within its specifications so the 50% flare efficiency was never applied.</p> <p>Hence, each hour either have 90% or 0%, depending on the flare temperature. The project emissions from flare are calculated based on the records of every hour and the correspondent flow of that hour.</p>
QA/QC procedures:	The information of the flare efficiency is managed by the use of the form 08.001 with hourly flare efficiency values and monthly calculated average and is further checked by the QA/QC officer. The enclosed flare regularly undergoes a maintenance process subject to the appropriate industrial standards and/or manufacturer's specifications in order to ensure measurement accuracy.
Purpose of data:	Baseline Emissions and Project Emissions
Additional comment:	No comments

Data / Parameter:	QDM
Unit:	N/A
Description:	Sludge soil application
Measured/ Calculated / Default:	N/A
Source of data:	Brascarbon Monitoring Report System (form 09.001)
Value(s) of monitored parameter:	N/A. Sludge was not removed during this monitoring period.
Monitoring equipment:	N/A
Measuring/ Reading/ Recording frequency:	Defined according to the digester performance.
Calculation method (if applicable):	N/A
QA/QC procedures:	Check the registers in the generated documents. The PP performs the monitoring of the sludge production and eventual removal and soil application, according with its internal procedures (POP 09).
Purpose of data:	N/A
Additional comment:	No comments

Data / Parameter:	W_{site}
Unit:	Kg
Description:	Average animal weight of a defined livestock population at the project site in year
Measured/ Calculated / Default:	Measured
Source of data:	The data collection is realized quarterly by each farm owner, together with COOASGO (Cooperativa Agropecuária São Gabriel do Oeste) and provided to the PP. COOASGO is the Pig Producers Association to whom the farms contained in the PDD are associated; its main role is to act as a third party responsible for the assurance of all the logistics associated with the swine producers, providing the animal nutrition, genetics and all the overall animal weight.
Value(s) of monitored parameter:	The values of W_{site} can be found in the spreadsheet calculation file "CER Calculation MR04 - BCA-BRA-05" in the folder <i>BEy ex-post – PEy ex-post</i> .
Monitoring equipment:	N/A
Measuring/ Reading/ Recording frequency:	Quarterly (based on sampling following COOASGO's internal procedure) and at full weight of the batch of pigs every time it leaves the farms (each batch stays around 5 to 6 months per farm).
Calculation method (if applicable):	The quarterly weight of the animals for each producer of the PDD is made following COOASGO's internal procedure, that is not under the PP's control – the association selects the animals based on a random sampling approach applied in each category, since it is infeasible to weight each animal individually in the farms belonging to the project (these farms can more than 5,000 animals each). In addition, each project site presents the actual animal weight by using Brascarbon form 16.001 after a cross-check by the PP, using the real information after each batch of animals exits each farm; the template was designed to quarterly report animal weight per category.
QA/QC procedures:	<p>Check of the site records and documents. The values of the quarterly weights presented by COOASGO (following the association's internal procedures) to the PP are cross-checked against two different credible sources:</p> <ul style="list-style-type: none"> - reference figures from EMBRAPA (an undisputed Brazilian Agricultural Research Corporation nationally recognized for the these scope) for each category; and - the figures provided by COOASGO when each of the swine batches exits each farm (each batch stays around 5 to 6 months per farm), as explained below. Here COOASGO provides with 100% of the animals weight (and number), allowing a full cross-check with the weight values provided and assuring all the information is accurate. <p>If the PP verifies during the cross-check any discrepancy between the values provided quarterly and the full weighting and counting of the animals in the invoices provided by COOASGO each time any batch exits a giving farm, those values will be updated accordingly with these real figures.</p>
Purpose of data:	Baseline Emissions and project emissions

Additional comment:	<p>The current practice of swine farms in Brazil is that each farm receives new batches of animals every 5 to 6 months (which is also the average time that a batch stays in a farm) and the producer, together with COOASGO, performs regular and periodical visits to each farm in order to assess and evaluate the correct development of each batch in terms of growing/weighting of the animals (according with what is expected at each growing stage of a given batch). It is important to highlight that both the farm owners and COOASGO rely on the quality of the values measured since their sole professional occupation is the pig production and, therefore, it is within their best interests to have a correct and reliable way to assess the weighting of the animals (which is their business) based on their experience and internal procedures.</p> <p>Every 5 to 6 months (depending on each batch and farm), the animal batches leave the farms and they are, in this specific situation, 100% weighted by the producers, together with COOASGO – this weighting is undertaken to the totality of animal presented in the batch since the profits associated with the animal production are weight based. According with COOASGO a possible range of +/- 5kg within the animal growing is considered a normal fluctuation and therefore admissible.</p> <p>Each time a batch exits a farm, COOASGO provides the invoices to attest the feasibility of the figures adopted, allowing a complete and thorough cross-check by PP of all the data used for this parameter.</p> <p>Monitoring operational procedure POP-016.</p>
---------------------	--

Data / Parameter:	ER _{y,ex-post}										
Unit:	t CO ₂ e										
Description:	Ex-post emission reductions achieved by the project activity based on monitored values for the year “y”.										
Measured/ Calculated / Default:	Calculated										
Source of data:	Brascarbon Monitoring Report System (form 17.001 – CER calculation spreadsheet)										
Value(s) of monitored parameter:	The values of ER _{y,ex-post} can be found in the spreadsheet calculation file “CER Calculation MR04 - BCA-BRA-05” in the folder <i>ERy ex-post</i> .										
Monitoring equipment:	N/A										
Measuring/ Reading/ Recording frequency:	Monthly and compounded annually										
Calculation method (if applicable):	<div style="border: 1px solid black; padding: 5px; margin-bottom: 10px;"> $ER_{y,ex-post} = \min[(BE_{y,ex-post} - PE_{y,ex-post}), (MD_y - PE_{power,y,ex-post})]$ </div> <p>Where</p> <table style="width: 100%; border-collapse: collapse;"> <tr> <td style="width: 20%;">ER_{y,ex-post}</td><td>Emission reductions achieved by the project activity based on monitored values for year y (tCO₂e)</td></tr> <tr> <td>BE_{y,ex post}</td><td>Baseline emissions calculated using equation 1 and using ex post monitored values of N_{LT,y} and if applicable VS_{LT,y} for year y (tCO₂e)</td></tr> <tr> <td>PE_{y,ex post}</td><td>Project emissions calculated using equation 3 using ex post monitored values of N_{LT,y}, MS%_{i,y} and if applicable VS_{LT,y} for year y (tCO₂e)</td></tr> <tr> <td>MD_y</td><td>Methane captured and destroyed or used gainfully by the project activity in year y (tCO₂e)</td></tr> <tr> <td>PE_{power,y,ex post}</td><td>Emissions from the use of fossil fuel or electricity for the operation of the installed facilities based on monitored values in the year y (tCO₂e)</td></tr> </table> <p>Please see more details in Section E</p>	ER _{y,ex-post}	Emission reductions achieved by the project activity based on monitored values for year y (tCO ₂ e)	BE _{y,ex post}	Baseline emissions calculated using equation 1 and using ex post monitored values of N _{LT,y} and if applicable VS _{LT,y} for year y (tCO ₂ e)	PE _{y,ex post}	Project emissions calculated using equation 3 using ex post monitored values of N _{LT,y} , MS% _{i,y} and if applicable VS _{LT,y} for year y (tCO ₂ e)	MD _y	Methane captured and destroyed or used gainfully by the project activity in year y (tCO ₂ e)	PE _{power,y,ex post}	Emissions from the use of fossil fuel or electricity for the operation of the installed facilities based on monitored values in the year y (tCO ₂ e)
ER _{y,ex-post}	Emission reductions achieved by the project activity based on monitored values for year y (tCO ₂ e)										
BE _{y,ex post}	Baseline emissions calculated using equation 1 and using ex post monitored values of N _{LT,y} and if applicable VS _{LT,y} for year y (tCO ₂ e)										
PE _{y,ex post}	Project emissions calculated using equation 3 using ex post monitored values of N _{LT,y} , MS% _{i,y} and if applicable VS _{LT,y} for year y (tCO ₂ e)										
MD _y	Methane captured and destroyed or used gainfully by the project activity in year y (tCO ₂ e)										
PE _{power,y,ex post}	Emissions from the use of fossil fuel or electricity for the operation of the installed facilities based on monitored values in the year y (tCO ₂ e)										
QA/QC procedures:	The ER _{y,ex-post} is calculated by the QC officer using the emissions reduction spreadsheet calculation. When the results are not accordant with the expected/projected, the QA/QC officer recommends additional corrective action to be checked and/or followed in the field.										
Purpose of data:	N/A										
Additional comment:	No comments										

Data / Parameter:	FFR
Unit:	No data unit applied
Description:	Formulated feed rations
Measured/ Calculated / Default:	N/A
Source of data:	Brascarbon Monitoring Report System (form 14.001)
Value(s) of monitored parameter:	The monitoring of FFR during the monitoring period confirmed that the farm uses formulated feed rations (FFR) which are optimized for the various animal(s), stage of growth, category, weight gain/productivity and/or genetics
Monitoring equipment:	N/A
Measuring/ Reading/ Recording frequency:	Monthly
Calculation method (if applicable):	N/A
QA/QC procedures:	The formulated feed rations used per animal category is controlled by the use of the form 14.001 and is further checked by the QA/QC officer, together with information and records obtained in the confined animal feed operation on food composition and, when available, on food purchases.
Purpose of data:	Baseline emissions (to validate Bo and VS values used)
Additional comment:	No comments

Data / Parameter:	P _{biogas}																																																																																										
Unit:	mbar																																																																																										
Description:	Pressure of the biogas at operation conditions																																																																																										
Measured/ Calculated / Default:	Measured																																																																																										
Source of data:	Brascarbon Monitoring Report System (form 04.001)																																																																																										
Value(s) of monitored parameter:	The values of P _{biogas} can be found in the spreadsheet calculation file "CER Calculation MR04 - BCA-BRA-05" in the folder <i>MDy-PEpower,y,ex-post</i> .																																																																																										
Monitoring equipment:	<p style="text-align: center;">Biogas Analyser ⁽¹⁾⁽²⁾ Calibration Control</p> <table border="1"> <thead> <tr> <th>Farm Name</th><th>Site ID</th><th>Biogas Analyser Serial Number</th><th>Calibration Certificate Number</th><th>Last Calibration Date ⁽³⁾</th><th>Expiration Date</th></tr> </thead> <tbody> <tr><td>Fazenda Dragão</td><td>BCA-032MS1-05</td><td></td><td></td><td></td><td></td></tr> <tr><td>Lote 55 e 54</td><td>BCA-034MS1-05</td><td></td><td></td><td></td><td></td></tr> <tr><td>Lote 101</td><td>BCA-035MS1-05</td><td></td><td></td><td></td><td></td></tr> <tr><td>Lote 105</td><td>BCA-036MS1-05</td><td>BM 11042</td><td>BM11042_5/1543</td><td>29/05/2012</td><td>29/11/2012</td></tr> <tr><td>Lote 71</td><td>BCA-037MS1-05</td><td>BM 11042</td><td>BM11042_5/1502</td><td>26/11/2012</td><td>25/05/2013</td></tr> <tr><td>Lote 82</td><td>BCA-038MS1-05</td><td>BM 11042</td><td>BM11042_5/2225</td><td>23/05/2013</td><td>22/11/2013</td></tr> <tr><td>Lote 28 e 27</td><td>BCA-039MS1-05</td><td>BM 11042</td><td>BM11042_5/2235</td><td>22/11/2013</td><td>21/05/2014</td></tr> <tr><td>Fazenda Bela Vista</td><td>BCA-040MS1-05</td><td>BM 11042</td><td>BM11042_5/2240</td><td>20/05/2014</td><td>19/11/2014</td></tr> <tr><td>Fazenda Cachoeira</td><td>BCA-042MS1-05</td><td>BM 11042</td><td>BM11042_5/2430</td><td>17/11/2014</td><td>16/05/2015</td></tr> <tr><td>Granja Capivara</td><td>BCA-043MS1-05</td><td>BM 11042</td><td>BM11042_5/2550</td><td>10/05/2015</td><td>09/11/2015</td></tr> <tr><td>Fazenda Sorgatto</td><td>BCA-046MS1-05</td><td></td><td></td><td></td><td></td></tr> <tr><td>Fazenda Bambú - Quinhão A</td><td>BCA-051MS1-05</td><td></td><td></td><td></td><td></td></tr> <tr><td>Fazenda Folleto</td><td>BCA-052MS1-05</td><td></td><td></td><td></td><td></td></tr> </tbody> </table> <table border="1"> <tbody> <tr> <td>(1) Monitoring equipment type:</td><td>Biogas Check Portable Digital Analyzer from Geotech/Landtech</td></tr> <tr> <td>(2) Accuracy class:</td><td> <ul style="list-style-type: none"> • CH₄: ± 0.5% from 0-5% CH₄ content; ± 1.0% from 5-15% CH₄ content; ± 3.0% from 15%-full scale CH₄ content • Temperature: ± 0.2°C (Biogas check analyzer accuracy) ± 0.5°C (temperature probe accuracy) • Pressure: ± 4mbar typically and ±15 mbar maximum </td></tr> <tr> <td>(3) Calibration frequency:</td><td>Every 6 months</td></tr> </tbody> </table>	Farm Name	Site ID	Biogas Analyser Serial Number	Calibration Certificate Number	Last Calibration Date ⁽³⁾	Expiration Date	Fazenda Dragão	BCA-032MS1-05					Lote 55 e 54	BCA-034MS1-05					Lote 101	BCA-035MS1-05					Lote 105	BCA-036MS1-05	BM 11042	BM11042_5/1543	29/05/2012	29/11/2012	Lote 71	BCA-037MS1-05	BM 11042	BM11042_5/1502	26/11/2012	25/05/2013	Lote 82	BCA-038MS1-05	BM 11042	BM11042_5/2225	23/05/2013	22/11/2013	Lote 28 e 27	BCA-039MS1-05	BM 11042	BM11042_5/2235	22/11/2013	21/05/2014	Fazenda Bela Vista	BCA-040MS1-05	BM 11042	BM11042_5/2240	20/05/2014	19/11/2014	Fazenda Cachoeira	BCA-042MS1-05	BM 11042	BM11042_5/2430	17/11/2014	16/05/2015	Granja Capivara	BCA-043MS1-05	BM 11042	BM11042_5/2550	10/05/2015	09/11/2015	Fazenda Sorgatto	BCA-046MS1-05					Fazenda Bambú - Quinhão A	BCA-051MS1-05					Fazenda Folleto	BCA-052MS1-05					(1) Monitoring equipment type:	Biogas Check Portable Digital Analyzer from Geotech/Landtech	(2) Accuracy class:	<ul style="list-style-type: none"> • CH₄: ± 0.5% from 0-5% CH₄ content; ± 1.0% from 5-15% CH₄ content; ± 3.0% from 15%-full scale CH₄ content • Temperature: ± 0.2°C (Biogas check analyzer accuracy) ± 0.5°C (temperature probe accuracy) • Pressure: ± 4mbar typically and ±15 mbar maximum 	(3) Calibration frequency:	Every 6 months
Farm Name	Site ID	Biogas Analyser Serial Number	Calibration Certificate Number	Last Calibration Date ⁽³⁾	Expiration Date																																																																																						
Fazenda Dragão	BCA-032MS1-05																																																																																										
Lote 55 e 54	BCA-034MS1-05																																																																																										
Lote 101	BCA-035MS1-05																																																																																										
Lote 105	BCA-036MS1-05	BM 11042	BM11042_5/1543	29/05/2012	29/11/2012																																																																																						
Lote 71	BCA-037MS1-05	BM 11042	BM11042_5/1502	26/11/2012	25/05/2013																																																																																						
Lote 82	BCA-038MS1-05	BM 11042	BM11042_5/2225	23/05/2013	22/11/2013																																																																																						
Lote 28 e 27	BCA-039MS1-05	BM 11042	BM11042_5/2235	22/11/2013	21/05/2014																																																																																						
Fazenda Bela Vista	BCA-040MS1-05	BM 11042	BM11042_5/2240	20/05/2014	19/11/2014																																																																																						
Fazenda Cachoeira	BCA-042MS1-05	BM 11042	BM11042_5/2430	17/11/2014	16/05/2015																																																																																						
Granja Capivara	BCA-043MS1-05	BM 11042	BM11042_5/2550	10/05/2015	09/11/2015																																																																																						
Fazenda Sorgatto	BCA-046MS1-05																																																																																										
Fazenda Bambú - Quinhão A	BCA-051MS1-05																																																																																										
Fazenda Folleto	BCA-052MS1-05																																																																																										
(1) Monitoring equipment type:	Biogas Check Portable Digital Analyzer from Geotech/Landtech																																																																																										
(2) Accuracy class:	<ul style="list-style-type: none"> • CH₄: ± 0.5% from 0-5% CH₄ content; ± 1.0% from 5-15% CH₄ content; ± 3.0% from 15%-full scale CH₄ content • Temperature: ± 0.2°C (Biogas check analyzer accuracy) ± 0.5°C (temperature probe accuracy) • Pressure: ± 4mbar typically and ±15 mbar maximum 																																																																																										
(3) Calibration frequency:	Every 6 months																																																																																										
Measuring/ Reading/ Recording frequency:	Monthly																																																																																										
Calculation method (if applicable):	N/A																																																																																										
QA/QC procedures:	The information of the biogas pressure is managed by the use of the form 04.001 (formulary for field data collection) and is further checked by the QA/QC officer. The calibration certificates are managed to guarantee the portable analyzers are calibrated during all the monitoring period. The QA/QC officer checks one month before the expiration date stated in the calibration certificates to proceed with the new calibration.																																																																																										
Purpose of data:	Baseline Emissions																																																																																										
Additional comment:	No comments																																																																																										

Data / Parameter:	GENETIC SOURCE
Unit:	No data unit applied
Description:	Genetic source from annex I party
Measured/ Calculated / Default:	N/A
Source of data:	Brascarbon Monitoring Report System (form 15.001)
Value(s) of monitored parameter:	The monitoring of Genetic Source during the monitoring period confirmed that the farms use Western Europe genetic
Monitoring equipment:	N/A
Measuring/ Reading/ Recording frequency:	Annually
Calculation method (if applicable):	N/A
QA/QC procedures:	The genetic source used per animal category is controlled by the use of the form 15.001 and is further checked by the QA/QC officer, together with information and records obtained in the confined animal feed operation regarding the livestock genetic composition of each producer (purchase notes if available).
Purpose of data:	Baseline Emissions (to validate Bo and VS values used)
Additional comment:	No comments

Data / Parameter:	MS% _{i,y}
Unit:	Fraction
Description:	Fraction of manure handled in system "i", year "y".
Measured/ Calculated / Default:	Estimated
Source of data:	Brascarbon Monitoring Report System (form 02.001)
Value(s) of monitored parameter:	During the site inspection, it was confirmed that no changes in the manure management system occurred and all the manure was handled in the project facilities. Value is therefore 1.
Monitoring equipment:	N/A
Measuring/ Reading/ Recording frequency:	Annually
Calculation method (if applicable):	N/A
QA/QC procedures:	The fraction of manure handled in in system is observed during the site visit and controlled by the use of the form 02.001 and is further checked by the QA/QC officer.
Purpose of data:	Project Emissions
Additional comment:	No comments

Data / Parameter:	$TM_{RG,h}$
Unit:	kg/h
Description:	Mass flow rate of methane in the residual gas in the hour h
Measured/ Calculated / Default:	Calculated
Source of data:	Brascarbon Monitoring Report System (form 17.001 – CER calculation spreadsheet)
Value(s) of monitored parameter:	The values of $TM_{RG,h}$ can be found in the spreadsheet calculation file “CER Calculation MR04 - BCA-BRA-05” in the folder BEy ex-post – PEy ex-post.
Monitoring equipment:	N/A
Measuring/ Reading/ Recording frequency:	Monthly
Calculation method (if applicable):	<p>Calculated according to the “Tool to determine project emissions from flaring gases containing methane”, using the monthly average calculated value of $FV_{RG,h}$ and the monthly monitored value of $fv_{CH4,RG,h}$ (both values referred to in the same basis - wet).</p> $TM_{RG,h} = FV_{RG,h} * fv_{CH4,RG,h} * 0,716$ <p>Where: $FV_{RG,h}$ Volumetric flow rate of the residual gas at normal conditions in hour h $fv_{CH4,RG,h}$ Volumetric fraction of methane in the residual gas in hour h 0.716 Density of methane in normal conditions: default value indicated in EB 28, ANNEX 13, “Tool to determine project emissions from flaring gases containing methane”, Page 9</p>
QA/QC procedures:	The $TM_{RG,h}$ calculation is done by the QA/QC officer based on monitoring data using the emissions reduction spreadsheet calculation and it is further checked.
Purpose of data:	Project Emissions
Additional comment:	No comments

Data / Parameter:	$FV_{RG,h}$																																																																																																
Unit:	m ³ /h																																																																																																
Description:	Volumetric flow rate of the residual gas at normal conditions in hour h																																																																																																
Measured/ Calculated / Default:	Calculated																																																																																																
Source of data:	Brascarbon Monitoring Report System																																																																																																
Value(s) of monitored parameter:	The values of $FV_{RG,h}$ can be found in the spreadsheet calculation file "CER Calculation MR04 - BCA-BRA-05" in the folder <i>BEy ex-post – PEy ex-post</i> .																																																																																																
Monitoring equipment:	<table border="1"> <thead> <tr> <th colspan="6">Flow Meter ⁽¹⁾⁽²⁾ Calibration Control</th> </tr> <tr> <th>Farm name</th><th>Site ID</th><th>Flow Meter Serial Number</th><th>Calibration Certification Number</th><th>Installation Calibration Date (3)</th><th>Expiration Date</th></tr> </thead> <tbody> <tr> <td>Fazenda Dragão</td><td>BCA-032MS1-05</td><td>A700693412A</td><td>EN 10204 - 2.1</td><td>27/04/11 21/04/13 15/04/15</td><td>26/04/13 20/04/15 14/04/17</td></tr> <tr> <td>Lote 55 e 54</td><td>BCA-034MS1-05</td><td>A700613412A</td><td>EN 10204 - 2.1</td><td>27/04/11 21/04/13 15/04/15</td><td>26/04/13 20/04/15 14/04/17</td></tr> <tr> <td>Lote 101</td><td>BCA-035MS1-05</td><td>A700753412A</td><td>EN 10204 - 2.1</td><td>27/04/11 21/04/13 15/04/15</td><td>26/04/13 20/04/15 14/04/17</td></tr> <tr> <td>Lote 105</td><td>BCA-036MS1-05</td><td>A700663412A</td><td>EN 10204 - 2.1</td><td>27/04/11 21/04/13 15/04/15</td><td>26/04/13 20/04/15 14/04/17</td></tr> <tr> <td>Lote 71</td><td>BCA-037MS1-05</td><td>A700683412A</td><td>EN 10204 - 2.1</td><td>27/04/11 21/04/13 15/04/15</td><td>26/04/13 20/04/15 14/04/17</td></tr> <tr> <td>Lote 82</td><td>BCA-038MS1-05</td><td>A700633412A</td><td>EN 10204 - 2.1</td><td>27/04/11 21/04/13 15/04/15</td><td>26/04/13 20/04/15 14/04/17</td></tr> <tr> <td>Lote 28 e 27</td><td>BCA-039MS1-05</td><td>A700583412A</td><td>EN 10204 - 2.1</td><td>27/04/11 21/04/13 15/04/15</td><td>26/04/13 20/04/15 14/04/17</td></tr> <tr> <td>Fazenda Bela Vista</td><td>BCA-040MS1-05</td><td>A700623412A</td><td>EN 10204 - 2.1</td><td>27/04/11 21/04/13 15/04/15</td><td>26/04/13 20/04/15 14/04/17</td></tr> <tr> <td>Fazenda Cachoeira</td><td>BCA-042MS1-05</td><td>A700553412A</td><td>EN 10204 - 2.1</td><td>27/04/11 21/04/13 15/04/15</td><td>26/04/13 20/04/15 14/04/17</td></tr> <tr> <td>Granja Capivara</td><td>BCA-043MS1-05</td><td>A700563412A</td><td>EN 10204 - 2.1</td><td>27/04/11 21/04/13 15/04/15</td><td>26/04/13 20/04/15 14/04/17</td></tr> <tr> <td>Fazenda Sorgatto</td><td>BCA-046MS1-05</td><td>A700833412A</td><td>EN 10204 - 2.1</td><td>27/04/11 21/04/13 15/04/15</td><td>26/04/13 20/04/15 14/04/17</td></tr> <tr> <td>Fazenda Bambú - Quinhão A</td><td>BCA-051MS1-05</td><td>A700713412A</td><td>EN 10204 - 2.1</td><td>27/04/11 21/04/13 15/04/15</td><td>26/04/13 20/04/15 14/04/17</td></tr> <tr> <td>Fazenda Folleto</td><td>BCA-052MS1-05</td><td>A700573412A</td><td>EN 10204 - 2.1</td><td>27/04/11 21/04/13 15/04/15</td><td>26/04/13 20/04/15 14/04/17</td></tr> </tbody> </table> <table border="1"> <tr> <td>(1) Monitoring equipment type:</td><td>Endress+Hauser thermal mass flow meter t-trend - ATT12</td></tr> <tr> <td>(2) Accuracy class:</td><td>± 5% of factory full scale</td></tr> <tr> <td>(3) Calibration frequency:</td><td>Every 2 years of continuous operation (counted from the date of installation)</td></tr> </table>	Flow Meter ⁽¹⁾⁽²⁾ Calibration Control						Farm name	Site ID	Flow Meter Serial Number	Calibration Certification Number	Installation Calibration Date (3)	Expiration Date	Fazenda Dragão	BCA-032MS1-05	A700693412A	EN 10204 - 2.1	27/04/11 21/04/13 15/04/15	26/04/13 20/04/15 14/04/17	Lote 55 e 54	BCA-034MS1-05	A700613412A	EN 10204 - 2.1	27/04/11 21/04/13 15/04/15	26/04/13 20/04/15 14/04/17	Lote 101	BCA-035MS1-05	A700753412A	EN 10204 - 2.1	27/04/11 21/04/13 15/04/15	26/04/13 20/04/15 14/04/17	Lote 105	BCA-036MS1-05	A700663412A	EN 10204 - 2.1	27/04/11 21/04/13 15/04/15	26/04/13 20/04/15 14/04/17	Lote 71	BCA-037MS1-05	A700683412A	EN 10204 - 2.1	27/04/11 21/04/13 15/04/15	26/04/13 20/04/15 14/04/17	Lote 82	BCA-038MS1-05	A700633412A	EN 10204 - 2.1	27/04/11 21/04/13 15/04/15	26/04/13 20/04/15 14/04/17	Lote 28 e 27	BCA-039MS1-05	A700583412A	EN 10204 - 2.1	27/04/11 21/04/13 15/04/15	26/04/13 20/04/15 14/04/17	Fazenda Bela Vista	BCA-040MS1-05	A700623412A	EN 10204 - 2.1	27/04/11 21/04/13 15/04/15	26/04/13 20/04/15 14/04/17	Fazenda Cachoeira	BCA-042MS1-05	A700553412A	EN 10204 - 2.1	27/04/11 21/04/13 15/04/15	26/04/13 20/04/15 14/04/17	Granja Capivara	BCA-043MS1-05	A700563412A	EN 10204 - 2.1	27/04/11 21/04/13 15/04/15	26/04/13 20/04/15 14/04/17	Fazenda Sorgatto	BCA-046MS1-05	A700833412A	EN 10204 - 2.1	27/04/11 21/04/13 15/04/15	26/04/13 20/04/15 14/04/17	Fazenda Bambú - Quinhão A	BCA-051MS1-05	A700713412A	EN 10204 - 2.1	27/04/11 21/04/13 15/04/15	26/04/13 20/04/15 14/04/17	Fazenda Folleto	BCA-052MS1-05	A700573412A	EN 10204 - 2.1	27/04/11 21/04/13 15/04/15	26/04/13 20/04/15 14/04/17	(1) Monitoring equipment type:	Endress+Hauser thermal mass flow meter t-trend - ATT12	(2) Accuracy class:	± 5% of factory full scale	(3) Calibration frequency:	Every 2 years of continuous operation (counted from the date of installation)
Flow Meter ⁽¹⁾⁽²⁾ Calibration Control																																																																																																	
Farm name	Site ID	Flow Meter Serial Number	Calibration Certification Number	Installation Calibration Date (3)	Expiration Date																																																																																												
Fazenda Dragão	BCA-032MS1-05	A700693412A	EN 10204 - 2.1	27/04/11 21/04/13 15/04/15	26/04/13 20/04/15 14/04/17																																																																																												
Lote 55 e 54	BCA-034MS1-05	A700613412A	EN 10204 - 2.1	27/04/11 21/04/13 15/04/15	26/04/13 20/04/15 14/04/17																																																																																												
Lote 101	BCA-035MS1-05	A700753412A	EN 10204 - 2.1	27/04/11 21/04/13 15/04/15	26/04/13 20/04/15 14/04/17																																																																																												
Lote 105	BCA-036MS1-05	A700663412A	EN 10204 - 2.1	27/04/11 21/04/13 15/04/15	26/04/13 20/04/15 14/04/17																																																																																												
Lote 71	BCA-037MS1-05	A700683412A	EN 10204 - 2.1	27/04/11 21/04/13 15/04/15	26/04/13 20/04/15 14/04/17																																																																																												
Lote 82	BCA-038MS1-05	A700633412A	EN 10204 - 2.1	27/04/11 21/04/13 15/04/15	26/04/13 20/04/15 14/04/17																																																																																												
Lote 28 e 27	BCA-039MS1-05	A700583412A	EN 10204 - 2.1	27/04/11 21/04/13 15/04/15	26/04/13 20/04/15 14/04/17																																																																																												
Fazenda Bela Vista	BCA-040MS1-05	A700623412A	EN 10204 - 2.1	27/04/11 21/04/13 15/04/15	26/04/13 20/04/15 14/04/17																																																																																												
Fazenda Cachoeira	BCA-042MS1-05	A700553412A	EN 10204 - 2.1	27/04/11 21/04/13 15/04/15	26/04/13 20/04/15 14/04/17																																																																																												
Granja Capivara	BCA-043MS1-05	A700563412A	EN 10204 - 2.1	27/04/11 21/04/13 15/04/15	26/04/13 20/04/15 14/04/17																																																																																												
Fazenda Sorgatto	BCA-046MS1-05	A700833412A	EN 10204 - 2.1	27/04/11 21/04/13 15/04/15	26/04/13 20/04/15 14/04/17																																																																																												
Fazenda Bambú - Quinhão A	BCA-051MS1-05	A700713412A	EN 10204 - 2.1	27/04/11 21/04/13 15/04/15	26/04/13 20/04/15 14/04/17																																																																																												
Fazenda Folleto	BCA-052MS1-05	A700573412A	EN 10204 - 2.1	27/04/11 21/04/13 15/04/15	26/04/13 20/04/15 14/04/17																																																																																												
(1) Monitoring equipment type:	Endress+Hauser thermal mass flow meter t-trend - ATT12																																																																																																
(2) Accuracy class:	± 5% of factory full scale																																																																																																
(3) Calibration frequency:	Every 2 years of continuous operation (counted from the date of installation)																																																																																																
Measuring/ Reading/ Recording frequency:	Monthly																																																																																																

Calculation method (if applicable):	<p>The parameter $FV_{RG,h}$ is calculated in normal (NTP) conditions (101.325 kPa and 273.15 K) as requested by the “Tool to determine project emissions from flaring gases containing methane” (EB 28, Annex 13). Hence, the measured $BG_{burnt,y}$ at measurement conditions (pressure and temperature) is converted to normal conditions using the following formula:</p> $V_{normal\ conditions} = (PV/T)_{measurement\ conditions} * (T/P)_{normal\ conditions}$ <p>Then, the calculation is made according to the formula below and based on monitored data of total biogas volume directed to the flare in a one month and the total hours of operation in that month. $FV_{RG,h}$ obtained is in wet basis (same basis as $BG_{burnt,y\ normal}$)</p> $FV_{RG,h} = BG_{burnt,y\ normal} / \text{Total hours}$ <p>This approach has been considered accurate for the calculation of $FV_{RG,h}$ since the biogas hourly flow is considered to be constant as there is no artificial blower or pump.</p>
QA/QC procedures:	The $FV_{RG,h}$ calculation is done by the QA/QC officer based on monitored data and further checked. The calibration certificates are managed to guarantee the flow meters are calibrated during all the monitoring period. The QA/QC officer checks one month before the expiration date, to proceed with the new calibration.
Purpose of data:	Project Emissions
Additional comment:	No comments

Data / Parameter:	$f_{VCH_4, RG, h}$																																																																																				
Unit:	Fraction																																																																																				
Description:	Volumetric fraction of methane content in the residual gas in hour h																																																																																				
Measured/ Calculated / Default:	Measured																																																																																				
Source of data:	Brascarbon Monitoring Report System (form 04.001)																																																																																				
Value(s) of monitored parameter:	The values of $f_{VCH_4, RG, h}$ can be found in the spreadsheet calculation file "CER Calculation MR04 - BCA-BRA-05" in the folder <i>BEy ex-post – PEy ex-post</i> .																																																																																				
Monitoring equipment:	<p style="text-align: center;">Biogas Analyser ⁽¹⁾⁽²⁾ Calibration Control</p> <table border="1"> <thead> <tr> <th>Farm Name</th><th>Site ID</th><th>Biogas Analyser Serial Number</th><th>Calibration Certificate Number</th><th>Last Calibration Date ⁽³⁾</th><th>Expiration Date</th></tr> </thead> <tbody> <tr><td>Fazenda Dragão</td><td>BCA-032MS1-05</td><td></td><td></td><td></td><td></td></tr> <tr><td>Lote 55 e 54</td><td>BCA-034MS1-05</td><td></td><td></td><td></td><td></td></tr> <tr><td>Lote 101</td><td>BCA-035MS1-05</td><td></td><td></td><td></td><td></td></tr> <tr><td>Lote 105</td><td>BCA-036MS1-05</td><td>BM 11042</td><td>BM11042_5/1543</td><td>29/05/2012</td><td>29/11/2012</td></tr> <tr><td>Lote 71</td><td>BCA-037MS1-05</td><td>BM 11042</td><td>BM11042_5/1502</td><td>26/11/2012</td><td>25/05/2013</td></tr> <tr><td>Lote 82</td><td>BCA-038MS1-05</td><td>BM 11042</td><td>BM11042_5/2225</td><td>23/05/2013</td><td>22/11/2013</td></tr> <tr><td>Lote 28 e 27</td><td>BCA-039MS1-05</td><td>BM 11042</td><td>BM11042_5/2235</td><td>22/11/2013</td><td>21/05/2014</td></tr> <tr><td>Fazenda Bela Vista</td><td>BCA-040MS1-05</td><td>BM 11042</td><td>BM11042_5/2240</td><td>20/05/2014</td><td>19/11/2014</td></tr> <tr><td>Fazenda Cachoeira</td><td>BCA-042MS1-05</td><td>BM 11042</td><td>BM11042_5/2430</td><td>17/11/2014</td><td>16/05/2015</td></tr> <tr><td>Granja Capivara</td><td>BCA-043MS1-05</td><td>BM 11042</td><td>BM11042_5/2550</td><td>10/05/2015</td><td>09/11/2015</td></tr> <tr><td>Fazenda Sorgatto</td><td>BCA-046MS1-05</td><td></td><td></td><td></td><td></td></tr> <tr><td>Fazenda Bambú - Quinhão A</td><td>BCA-051MS1-05</td><td></td><td></td><td></td><td></td></tr> <tr><td>Fazenda Folleto</td><td>BCA-052MS1-05</td><td></td><td></td><td></td><td></td></tr> </tbody> </table> <p>(1) Monitoring equipment type: Biogas Check Portable Digital Analyzer from Geotech/Landtech</p> <p>(2) Accuracy class: <ul style="list-style-type: none"> • CH₄: ± 0.5% from 0-5% CH₄ content; ± 1.0% from 5-15% CH₄ content; ± 3.0% from 15%-full scale CH₄ content • Temperature: ± 0.2°C (Biogas check analyzer accuracy) ± 0.5°C (temperature probe accuracy) • Pressure: ± 4mbar typically and ±15 mbar maximum </p> <p>(3) Calibration frequency: Every 6 months</p>	Farm Name	Site ID	Biogas Analyser Serial Number	Calibration Certificate Number	Last Calibration Date ⁽³⁾	Expiration Date	Fazenda Dragão	BCA-032MS1-05					Lote 55 e 54	BCA-034MS1-05					Lote 101	BCA-035MS1-05					Lote 105	BCA-036MS1-05	BM 11042	BM11042_5/1543	29/05/2012	29/11/2012	Lote 71	BCA-037MS1-05	BM 11042	BM11042_5/1502	26/11/2012	25/05/2013	Lote 82	BCA-038MS1-05	BM 11042	BM11042_5/2225	23/05/2013	22/11/2013	Lote 28 e 27	BCA-039MS1-05	BM 11042	BM11042_5/2235	22/11/2013	21/05/2014	Fazenda Bela Vista	BCA-040MS1-05	BM 11042	BM11042_5/2240	20/05/2014	19/11/2014	Fazenda Cachoeira	BCA-042MS1-05	BM 11042	BM11042_5/2430	17/11/2014	16/05/2015	Granja Capivara	BCA-043MS1-05	BM 11042	BM11042_5/2550	10/05/2015	09/11/2015	Fazenda Sorgatto	BCA-046MS1-05					Fazenda Bambú - Quinhão A	BCA-051MS1-05					Fazenda Folleto	BCA-052MS1-05				
Farm Name	Site ID	Biogas Analyser Serial Number	Calibration Certificate Number	Last Calibration Date ⁽³⁾	Expiration Date																																																																																
Fazenda Dragão	BCA-032MS1-05																																																																																				
Lote 55 e 54	BCA-034MS1-05																																																																																				
Lote 101	BCA-035MS1-05																																																																																				
Lote 105	BCA-036MS1-05	BM 11042	BM11042_5/1543	29/05/2012	29/11/2012																																																																																
Lote 71	BCA-037MS1-05	BM 11042	BM11042_5/1502	26/11/2012	25/05/2013																																																																																
Lote 82	BCA-038MS1-05	BM 11042	BM11042_5/2225	23/05/2013	22/11/2013																																																																																
Lote 28 e 27	BCA-039MS1-05	BM 11042	BM11042_5/2235	22/11/2013	21/05/2014																																																																																
Fazenda Bela Vista	BCA-040MS1-05	BM 11042	BM11042_5/2240	20/05/2014	19/11/2014																																																																																
Fazenda Cachoeira	BCA-042MS1-05	BM 11042	BM11042_5/2430	17/11/2014	16/05/2015																																																																																
Granja Capivara	BCA-043MS1-05	BM 11042	BM11042_5/2550	10/05/2015	09/11/2015																																																																																
Fazenda Sorgatto	BCA-046MS1-05																																																																																				
Fazenda Bambú - Quinhão A	BCA-051MS1-05																																																																																				
Fazenda Folleto	BCA-052MS1-05																																																																																				
Measuring/ Reading/ Recording frequency:	The monitoring frequency is monthly and guarantees a 90/10 confidence/precision level (for details, please see Section D.3 – Implementation of sampling plan).																																																																																				
Calculation method (if applicable):	The methane content measured monthly ($W_{CH_4, y}$) is used as an (average) $f_{VCH_4, RG, h}$. This approach is considered accurate for the calculation of $PE_{flare, y}$ since the monthly monitored $W_{CH_4, y}$ (measured on wet basis) assures a 90/10 confidence/precision level in the methane concentration measurement.																																																																																				
QA/QC procedures:	The information of the methane content is managed by the use of the form 04.001 (formulary for field data collection). The calibration certificates are managed to guarantee the portable analyzers are calibrated during all the monitoring period. The QA/QC officer checks one month before the expiration date stated in the calibration certificates to proceed with the new calibration.																																																																																				
Purpose of data:	Project Emissions																																																																																				
Additional comment:	No comments																																																																																				

Data / Parameter:	nd _y
Unit:	Number
Description:	Number of days in year “y” where the treatment plant was operational
Measured/ Calculated / Default:	Calculated
Source of data:	Brascarbon Monitoring Report System (form 17.001 – CER Calculation spreadsheet)
Value(s) of monitored parameter:	The values of nd _y can be found in the spreadsheet calculation file “CER Calculation MR04 - BCA-BRA-05” in the folder <i>BEy ex-post – PEy ex-post</i> .
Monitoring equipment:	N/A
Measuring/ Reading/ Recording frequency:	Monthly
Calculation method (if applicable):	The number of days where the treatment plant is operational is monitored taking into account the number of temperature and biogas measurements stored in the CLP. As both the temperature and biogas volume are measured every minute, the information stored in the CLP allows for the calculation of the number of hours where the treatment plant was operation (H _{total} , obtained from form 08.001 from the Brascarbon Monitoring System) and consequently the number of days (dividing the total hours of operation by the number of hours in the day – 24).
QA/QC procedures:	The nd _y is calculated by the QC officer using the emissions reduction spreadsheet calculation. When the results are not accordant with the expected/projected, the QA/QC officer recommends additional corrective action to be checked and/or followed in the field.
Purpose of data:	Baseline Emissions
Additional comment:	No comments

Data / Parameter:	E
Unit:	kWh
Description:	Electricity consumed from the grid by the project
Measured/ Calculated / Default:	Measured
Source of data:	Brascarbon Monitoring Report System (form 22.001)
Value(s) of monitored parameter:	No electricity was consumed from the grid for the operation of the project facility in the monitoring period. Value is therefore 0.
Monitoring equipment:	N/A
Measuring/ Reading/ Recording frequency:	When used
Calculation method (if applicable):	N/A
QA/QC procedures:	If eventually electricity from the grid is used, the regional technician will follow the POP 22 and register the information of electricity consumption on form 22.001. All documents received from the field such as site records and documents are checked by the QA/QC.
Purpose of data:	Project Emissions
Additional comment:	No comments

D.3. Implementation of sampling plan

a) Sampling design

According to methodology AMS-III.D version 14 requirements, the parameter methane content in biogas can be measured with periodical measurements at a 95% confidence level (alternative to measuring with a continuous analyzer).

The sampling method chosen is systematic sampling with a random start date. However, as the sampling times are sufficiently far apart (monthly sampling), the data can be regarded as a set of independent observations and considered simple random sampling.

In order to implement the sampling plan, the project developer conducted an *ex-ante* study in all sites included in the PDD. The study consisted in measuring the methane content hourly during 7 consecutive days (total of 168 samples). The 168 measurements allowed the definition of a 95% confidence level interval specific for each farm, providing a minimum and maximum value of methane content inside the 95% confidence interval. The *ex-ante* statistical study has been provided to the DOE for verification.

b) Collected data

For the current monitoring period of 926 days (from 1st January 2013 to 14th July 2015), monthly measurements of methane content were taken in each site included in the PDD. The collection of data is done by the Regional Technician (RT) with a portable digital analyzer (Biogas Check portable model from Geotech/Landtech) during the monthly site visit, which takes place between the 1st and 20th day of each month. The RT is trained on procedures for data collection, namely with regards methane content measurement (included in Brascarbon Operational Procedure POP 05). Each monthly collected value for each site is used for the emission reduction calculation of the respective month and site.

c) Analysis of the collected data and compliance with the required confidence/precision level

The collected data for each site have been analyzed in order to assess compliance with the 95% confidence level. According to the analysis undertaken, all measurements have been within the pre-defined interval, so it is concluded that the required 95% confidence for the parameter methane content has been met.

SECTION E. Calculation of emission reductions or net anthropogenic removals

E.1. Calculation of baseline emissions or baseline net removals

The baseline emission can be calculated as follows:

Equation 1

$$BE_y = GWP_{CH4} * D_{CH4} * UF_b * \sum MCF_j * B_{0,LT} * N_{LT,y} * VS_{LT,y} * MS\%_{Bl,j}$$

Where:

BE_y	Baseline emissions in year “y” (tCO ₂ e)
GWP_{CH4}	Global Warming Potential (GWP) of CH ₄ (25)
D_{CH4}	CH ₄ density (0.00067 t/m ³ at room temperature (20 °C) and 1 atm pressure).
LT	Index for all types of livestock
j	Index for animal waste management system
MCF_j	Annual methane conversion factor (MCF) for the baseline animal waste management system “j”
$B_{0,LT}$	Maximum methane producing potential of the volatile solid generated for animal type “LT” (m ³ CH ₄ /kg dm)
$N_{LT,y}$	Annual average number of animals of type “LT” in year “y” (numbers)
$VS_{LT,y}$	Volatile solids for livestock “LT” entering the animal manure management system in year “y” (on a dry matter weight basis, kg dm/animal/year)
$MS\%_{Bl,j}$	Fraction of manure handled in baseline animal manure management system “j”
UF_b	Model correction factor to account for model uncertainties (0.94)

Where $VS_{LT,y}$ can be determined by scaling default IPCC values to adjust for a site-specific average animal weight according to Equation 2:

Equation 2

$$VS_{LT,y} = \left(\frac{W_{site}}{W_{default}} \right) * VS_{default} * nd_y$$

Where:

W_{site}	Average animal weight of a defined livestock population at the project site (kg)
$W_{default}$	Default average animal weight of a defined population, this data is sourced from IPCC 2006 (kg)
$VS_{default}$	Default value for the volatile solid excretion rate per day on a dry-matter basis for a defined livestock population (kg dm/animal/day)
nd_y	Number of days in year “y” where the treatment plant was operational.

As explained in section D.1, the values used for the parameters B_0 and VS are those applied for Western Europe.

Table E.1. summarizes the $BE_{y,ex\ post}$ for each farm during the current monitoring period. The detailed calculations are available in the CER calculation spreadsheet (folder *BEy ex-post – PEy ex-post*).

Table E.1. – Baseline Emissions ($BE_{y,ex\ post}$) in the current monitoring period

Site Name	Site ID	$BE_{y,ex\ post}$ (t CO ₂ e)
Fazenda Dragão	BCA-032MS1-05	9,035
Lote 55 e 54	BCA-034MS1-05	11,946
Lote 101	BCA-035MS1-05	9,025
Lote 105	BCA-036MS1-05	8,465
Lote 71	BCA-037MS1-05	8,036
Lote 82	BCA-038MS1-05	6,802
Lote 28 e 27	BCA-039MS1-05	12,335
Fazenda Bela Vista	BCA-040MS1-05	17,248
Fazenda Cachoeira	BCA-042MS1-05	23,146
Granja Capivara	BCA-043MS1-05	14,813
Fazenda Sorgatto	BCA-046MS1-05	12,404
Fazenda Bambú - Quinhão A	BCA-051MS1-05	13,636
Fazenda Folleto	BCA-052MS1-05	7,869
Fazenda Agua Branca	BCA-030MS1-05	0
Fazenda Rodeio - Gleba C	BCA-031MS1-05	0
Granja Serra Dourada	BCA-041MS1-05	0
Fazenda Santa Catarina	BCA-047MS1-05	0
Fazenda Ponte Vermelha	BCA-068MS1-05	0
Total $BE_{y,ex\ post}$		154,759

E.2. Calculation of project emissions or actual net removals

According to the simplified baseline and monitoring methodology for a small-scale CDM project Type-III (AMS-III.D - version 14), project emissions consist of:

- Physical leakage of biogas in the manure management systems, which includes production, collection and transport of biogas to the point of flaring/combustion or gainful use ($PE_{PL,y}$);
- Emissions from flaring or combustion of the gas stream ($PE_{flare,y}$);
- CO₂ emissions using fossil fuels or electricity for the operation of all the installed facilities ($PE_{power,y}$);

Equation 3

$$PE_y = PE_{PL,y} + PE_{flare,y} + PE_{power,y}$$

Where:

PE_y	Project emissions in year “y” (tCO ₂ e)
$PE_{PL,y}$	Emissions due to physical leakage of biogas in year “y” (tCO ₂ e)
$PE_{flare,y}$	Emissions from flaring or combustion of the biogas stream in the year “y” (tCO ₂ e)
$PE_{power,y}$	Emissions from the use of fossil fuel or electricity for the operation of the installed facilities in the year “y” (tCO ₂ e)

(A) Emissions due to physical leakage of biogas can be determinate as follows:

Equation 4

$$PE_{PL,y} = 0,10 * GWP_{CH4} * D_{CH4} * \sum B_{0,LT} * N_{LT,y} * VS_{LT,y} * MS\%_{i,y}$$

Where:

$PE_{PL,y}$	Emissions due to physical leakage of biogas in year "y" (t CO ₂ e)
GWP_{CH4}	Global Warming Potential (GWP) of CH ₄ (25)
D_{CH4}	CH ₄ density (0.00067 t/m ³ at room temperature (20 °C) and 1 atm pressure).
LT	Index for all types of livestock
I	Index for animal waste management system
$B_{0,LT}$	Maximum methane producing potential of the volatile solid generated for animal type "LT" (m3 (dm)
$N_{LT,y}$	Annual average number of animals of type "LT" in year "y" (numbers)
$VS_{LT,y}$	Volatile solids for livestock "LT" entering the animal manure management system in year "y" (o matter weight basis, kg dm/animal/year)
$MS\%_{i,y}$	Fraction of manure handled in system "i" in year "y"

(B) Emissions from flaring determinate as follows:

Equation 5

$$PE_{flare,y} = \sum_{h=1}^{8760} TM_{RG,h} * (1 - \eta_{flare,h}) * GWP_{CH4} / 1000$$

Where:

$PE_{flare,y}$	Project emissions from flaring of the residual gas stream in year y, t CO ₂ e
$TM_{RG,h}$	Mass flow rate of methane in the residual gas in the hour h, kg/h
GWP_{CH4}	Global Warming Potential of methane valid for the commitment period, tCO ₂ e/tCH ₄
$\eta_{flare,h}$	Flare efficiency in the hour h

Equation 6

$$TM_{RG,h} = FV_{RG,h} * fv_{CH4,RG,h} * 0.716$$

Where:

$FV_{RG,h}$	Volumetric flow rate of the residual gas at normal conditions in hour
$fv_{CH4,RG,h}$	Volumetric fraction of methane in the residual gas in hour h
0.716	Density of methane in normal conditions: default value indicated in EB 28, ANNEX 13, "Tool to determine project emissions from flaring gases containing methane", Page 9.

(C) Emissions from use of fossil fuels or electricity for the operation:

No fossil fuel or electricity will be used in the project, therefore, $PE_{power,y}$ = zero.

Table E.2 summarizes the project emissions for the current monitoring period ($PE_{y,ex-post}$) and more detailed information can be obtained in the CER calculation spreadsheet (folder *BE_{y ex-post} – PE_{y ex-post}*).

Table E.2. – Project Emissions ($PE_{y,ex-post}$) in the current monitoring period

Site Name	Site ID	$PE_{y,ex-post}$ (t CO ₂ e)
Fazenda Dragão	BCA-032MS1-05	2,152
Lote 55 e 54	BCA-034MS1-05	2,776
Lote 101	BCA-035MS1-05	2,055
Lote 105	BCA-036MS1-05	2,000
Lote 71	BCA-037MS1-05	1,922
Lote 82	BCA-038MS1-05	1,660
Lote 28 e 27	BCA-039MS1-05	2,927
Fazenda Bela Vista	BCA-040MS1-05	4,093
Fazenda Cachoeira	BCA-042MS1-05	5,620
Granja Capivara	BCA-043MS1-05	3,625
Fazenda Sorgatto	BCA-046MS1-05	2,960
Fazenda Bambú - Quinhão A	BCA-051MS1-05	1,836
Fazenda Folleto	BCA-052MS1-05	1,060
Fazenda Agua Branca	BCA-030MS1-05	0
Fazenda Rodeio - Gleba C	BCA-031MS1-05	0
Granja Serra Dourada	BCA-041MS1-05	0
Fazenda Santa Catarina	BCA-047MS1-05	0
Fazenda Ponte Vermelha	BCA-068MS1-05	0
Total $PE_{y,ex-post}$		34,686

E.3. Calculation of leakage emissions

According to the simplified baseline and monitoring methodology AMS-III.D - version 14, no leakage calculation is required.

E.4. Calculation of emission reductions or net anthropogenic removals

The emission reductions achieved by the project activity are determined ex post through direct measurement of the amount of methane fuelled, flared or gainfully used.

The emission reductions achieved in any year are the lowest value of the following:

Equation 7

$$ER_{y,ex-post} = \min[(BE_{y,ex-post} - PE_{y,ex-post}), (MD_y - PE_{power,y,ex-post})]$$

Where:

$ER_{y,ex-post}$	Emission reductions achieved by the project activity based on monitored values for year y (tCO ₂ e)
$BE_{y ex post}$	Baseline emissions calculated using equation 1 and using ex post monitored values of $N_{LT,y}$ and if applicable $VS_{LT,y}$ for year y (tCO ₂ e)
$PE_{y, ex post}$	Project emissions calculated using equation 3 using ex post monitored values of $N_{LT,y}$, $MS\%_{i,y}$ and if applicable $VS_{LT,y}$ for year y (tCO ₂ e)
MD_y	Methane captured and destroyed or used gainfully by the project activity in year y (tCO ₂ e)
$PE_{power,y,ex post}$	Emissions from the use of fossil fuel or electricity for the operation of the installed facilities based on monitored values in the year y (tCO ₂ e)

The flaring/combustion MD_y is measured using the conditions of the flaring process and according the following equation:

Equation 8

$$MD_y = BG_{burnt,y} * W_{CH_4,y} * D_{CH_4} * FE * GWP_{CH_4}$$

Where:

 $BG_{burnt,y}$ Biogas flared or combusted in year y (m³) $W_{CH_4,y}$ Methane content in biogas in the year y (volume fraction) FE Flare efficiency in the year y (fraction) GWP_{CH_4} Global Warming Potential (GWP) of CH₄ (25) D_{CH_4} Density of methane at the temperature and pressure of the biogas in the year “ y ” (t/m³).

Table E.3. summarizes the MD_y for each farm during the current monitoring period and Table E4. presents the $ER_{y,ex-post}$ calculated for the project activity, as per Equation 7. More detailed information can be obtained in the CER calculation spreadsheet (folder *BEy ex-post – PEy ex-post* and folder *ERy ex-post*).

Table E.3. – Methane captured and destroyed (MD_y) in the current monitoring period

Site Name	Site ID	MD_y (t CO ₂ e)
Fazenda Dragão	BCA-032MS1-05	8,279
Lote 55 e 54	BCA-034MS1-05	10,307
Lote 101	BCA-035MS1-05	7,428
Lote 105	BCA-036MS1-05	7,847
Lote 71	BCA-037MS1-05	7,652
Lote 82	BCA-038MS1-05	6,811
Lote 28 e 27	BCA-039MS1-05	11,227
Fazenda Bela Vista	BCA-040MS1-05	15,956
Fazenda Cachoeira	BCA-042MS1-05	21,145
Granja Capivara	BCA-043MS1-05	14,583
Fazenda Sorgatto	BCA-046MS1-05	11,482
Fazenda Bambú - Quinhão A	BCA-051MS1-05	10,139
Fazenda Folleto	BCA-052MS1-05	7,835
Fazenda Agua Branca	BCA-030MS1-05	0
Fazenda Rodeio - Gleba C	BCA-031MS1-05	0
Granja Serra Dourada	BCA-041MS1-05	0
Fazenda Santa Catarina	BCA-047MS1-05	0
Fazenda Ponte Vermelha	BCA-068MS1-05	0
Total MD_y		140,691

Table E.4. – $ER_{y,ex-post}$ in the current monitoring period

SITE ID	SITE NAME	MD_y (t CO ₂ e)	$PE_{power,y,ex-post}$ (t CO ₂ e)	$MD_y - PE_{power,y,ex-post}$ (t CO ₂ e)	$BE_{y,ex-post}$ (t CO ₂ e)	$PE_{y,ex-post}$ (t CO ₂ e)	$BE_{y,ex-post} - PE_{y,ex-post}$ (t CO ₂ e)	$ER_{y,ex-post}$ = min [($BE_{y,ex-post} - PE_{y,ex-post}$), ($MD_y - PE_{power,y,ex-post}$)] (t CO ₂ e)
BCA-032MS1-05	Fazenda Dragão	8,279	0	8,279	9,035	2,152		8,279
BCA-034MS1-05	Lote 55 e 54	10,307	0	10,307	11,946	2,776	9,169	9,169
BCA-035MS1-05	Lote 101	7,428	0	7,428	9,025	2,055	6,969	6,969
BCA-036MS1-05	Lote 105	7,847	0	7,847	8,465	2,000	6,464	6,464
BCA-037MS1-05	Lote 71	7,652	0	7,652	8,036	1,922	6,113	6,113
BCA-038MS1-05	Lote 82	6,811	0	6,811	6,802	1,660	5,142	5,142
BCA-039MS1-05	Lote 28 e 27	11,227	0	11,227	12,335	2,927	9,408	9,408
BCA-040MS1-05	Fazenda Bela Vista	15,956	0	15,956	17,248	4,093	13,155	13,155
BCA-042MS1-05	Fazenda Cachoeira	21,145	0	21,145	23,146	5,620	17,525	17,525
BCA-043MS1-05	Granja Capivara	14,583	0	14,583	14,813	3,625	11,188	11,188
BCA-046MS1-05	Fazenda Sorgatto	11,482	0	11,482	12,404	2,960	9,443	9,443
BCA-051MS1-05	Fazenda Bambú - Quinhão A	10,139	0	10,139	13,636	1,836	11,799	10,139
BCA-052MS1-05	Fazenda Folleto	7,835	0	7,835	7,869	1,060	6,809	6,809
BCA-030MS1-05	Fazenda Agua Branca	-	-	-	-	-	-	-
BCA-031MS1-05	Fazenda Rodeio - Gleba C	-	-	-	-	-	-	-
BCA-041MS1-05	Granja Serra Dourada	-	-	-	-	-	-	-
BCA-047MS1-05	Fazenda Santa Catarina	-	-	-	-	-	-	-
BCA-068MS1-05	Fazenda Ponte Vermelha	-	-	-	-	-	-	-
TOTAL		140,691	0	140,691	154,759	34,686	113,184	119,803

The Table E.4. above presents all the components which are calculated for each farm in order to comply with the methodology requirements for emission reductions determination. Due to the amount of information and methodology particularities, and in order to improve the reading of each parameter for all the farms, it was decided to include the emission reduction table in a different format from the one stated in the Monitoring Report Form, Version 06.0 which is more designed for a one site only project activity.

	Baseline GHG emissions or baseline net GHG removals (t CO ₂ e)	Project GHG emissions or actual net GHG removals (t CO ₂ e)	Leakage GHG emissions (t CO ₂ e)	GHG emission reductions or net anthropogenic GHG removals (t CO ₂ e)		
				Before 01/01/2013	From 01/01/2013	Total amount
Total	154,759	34,686	0	0	119,803	119,803

E.5. Comparison of emission reductions or net anthropogenic removals achieved with estimates in the registered PDD

Amount achieved during this monitoring period (t CO ₂ e)	Amount estimated ex ante (t CO ₂ e)
119,803 tCO ₂ e	89,238 tCO ₂ e*

* Annual emission reductions in ex-ante calculation of the registered CDM-PDD are 53,197 tCO₂e. The PDD value presented is adjusted to 89,238 tCO₂e considering that the duration of the monitoring period is 926 days and considering that the sites Fazenda Agua Branca, Fazenda Rodeio - Gleba C, Granja Serra Dourada, Fazenda Santa Catarina and Fazenda Ponte Vermelha were not operational during the current monitoring period.

A comparison between the actual emission reductions reached in the monitoring period and the estimated value in the PDD is presented for each farm in Table E.5. below.

Table E.5. Comparison between the ER_{y, ex-post} and the PDD values, for the monitoring period

Site Name	Site ID	ER _{y, ex-post} in the MP (t CO ₂ e)	PDD (t CO ₂ e)	% achieved	Variation
Fazenda Dragão	BCA-032MS1-05	8,279	5,488	151%	51%
Lote 55 e 54	BCA-034MS1-05	9,169	7,319	125%	25%
Lote 101	BCA-035MS1-05	6,969	3,658	190%	90%
Lote 105	BCA-036MS1-05	6,464	3,658	177%	77%
Lote 71	BCA-037MS1-05	6,113	3,658	167%	67%
Lote 82	BCA-038MS1-05	5,142	3,658	141%	41%
Lote 28 e 27	BCA-039MS1-05	9,408	7,319	129%	29%
Fazenda Bela Vista	BCA-040MS1-05	13,155	11,893	111%	11%
Fazenda Cachoeira	BCA-042MS1-05	17,525	16,470	106%	6%
Granja Capivara	BCA-043MS1-05	11,188	9,148	122%	22%
Fazenda Sorgatto	BCA-046MS1-05	9,443	5,990	158%	58%
Fazenda Bambú - Quinhão A	BCA-051MS1-05	10,139	7,319	139%	39%
Fazenda Folleto	BCA-052MS1-05	6,809	3,658	186%	86%
Fazenda Agua Branca	BCA-030MS1-05	0	0	0%	0%
Fazenda Rodeio - Gleba C	BCA-031MS1-05	0	0	0%	0%
Granja Serra Dourada	BCA-041MS1-05	0	0	0%	0%
Fazenda Santa Catarina	BCA-047MS1-05	0	0	0%	0%
Fazenda Ponte Vermelha	BCA-068MS1-05	0	0	0%	0%
Total		119,803	89,238	134%	34%

E.6. Remarks on increase in achieved emission reductions

The project activity achieved 134% of the PDD values during the monitoring period.

The actual emission reductions achieved during this monitoring period are 34% higher than the estimated value in the PDD. This increase is mainly due to the higher GWP of CH₄ (25 tCO₂e/tCH₄) used in the emission reduction calculation of this monitoring period compared to the one used in the PDD (21 tCO₂e/tCH₄) as per EB69 Annex 3, in compliance with relevant EB rules.

Every farm has experienced increases in the actual emission reductions motivated by changes in the average number of animals occurred. These are explained in Table E.6 below. These farms have experience a significant growth in the number of animals which is reflected in the increase of the emission reductions. Because the animal population and its characteristics can vary significantly, the project facilities have been dimensioned in order to accommodate significant variations in the swine population, so the reported changes have not affected the effective operation of the project facilities.

Another situation that needs to be addressed is regarding the farms BCA-030MS1-05, BCA-031MS1-05, BCA-041MS1-05, BCA-047MS1-05 and BCA-068MS1-05. Although the remaining farms present a good performance, Fazenda Agua Branca, Fazenda Rodeio - Gleba C, Granja Serra Dourada, Fazenda Santa Catarina and Fazenda Ponte Vermelha are presenting a 0% performance and therefore not considered for the calculation. That was due to the fact that, during the current monitoring period, the farms were not operational (without animals). If this situation becomes permanent, the farm will them be removed from the project activity in the PDD through a post registration change.

For information purposes, a comparison between average number of animals (N_{LT,y}) and average animal weight (W_{site}) reported in the MP when compared to PDD *ex-ante* estimation is presented in the CER calculation spreadsheet (folder *Comparison NLT,y* and folder *Comparison Wsite*, respectively).

Table E.6. – Explanation of increases between PDD estimation and actual values reached during the MP

Site Name	Swine type operation	Justification	Impact in the operation of the project facilities
Fazenda Dragão	Finisher type operation	Increase in the average number of, finishers in the MP when compared to PDD <i>ex-ante</i> estimation (+8%).	No. Because the animal population and its characteristics can vary significantly, the project facilities have been dimensioned in order to accommodate significant variations in the swine population, so the reported changes have not affected the effective operation of the project facilities.
Lote 55 e 54	Finisher type operation	Increase in the average number of, finishers in the MP when compared to PDD <i>ex-ante</i> estimation (+7%).	
Lote 101	Finisher type operation	Increase in the average number of, finishers in the MP when compared to PDD <i>ex-ante</i> estimation (+60%).	
Lote 105	Finisher type operation	Increase in the average number of, finishers in the MP when compared to PDD <i>ex-ante</i> estimation (+51%).	
Lote 71	Finisher type operation	Increase in the average number of, finishers in the MP when compared to PDD <i>ex-ante</i> estimation (+42%).	
Lote 82	Finisher type operation	Increase in the average number of, finishers in the MP when compared to PDD <i>ex-ante</i> estimation (+21%).	
Lote 28 e 27	Finisher type operation	Increase in the average number of, finishers in the MP when compared to PDD <i>ex-ante</i> estimation (+9%).	
Granja Capivara	Finisher type operation	Increase in the average number of, finishers in the MP when compared to PDD <i>ex-ante</i> estimation (+4%).	
Fazenda Sorgatto	Finisher type operation	Increase in the average number of, finishers in the MP when compared to PDD <i>ex-ante</i> estimation (+34%).	
Fazenda Bambú - Quinhão A	Finisher type operation	Increase in the average number of, finishers in the MP when compared to PDD <i>ex-ante</i> estimation (+21%).	
Fazenda Folleto	Finisher type operation	Increase in the average number of finishers in the MP when compared to PDD <i>ex-ante</i> estimation (+40%).	

- - - - -

Document information

<i>Version</i>	<i>Date</i>	<i>Description</i>
06.0	7 June 2017	Revision to: <ul style="list-style-type: none"> • Ensure consistency with version 01.0 of the "CDM project standard for project activities" (CDM-EB93-A04-STAN); • Make editorial improvements.
05.1	4 May 2015	Editorial revision to correct version numbering.
05.0	1 April 2015	Revisions to: <ul style="list-style-type: none"> • Include provisions related to delayed submission of a monitoring plan; • Provisions related to the Host Party; • Remove reference to programme of activities; • Overall editorial improvement.
04.0	25 June 2014	Revisions to: <ul style="list-style-type: none"> • Include the Attachment: Instructions for filling out the monitoring report form (these instructions supersede the "Guideline: Completing the monitoring report form" (Version 04.0)); • Include provisions related to standardized baselines; • Add contact information on a responsible person(s)/ entity(ies) for completing the CDM-MR-FORM in A.6 and Appendix 1; • Change the reference number from <i>F-CDM-MR</i> to <i>CDM-MR-FORM</i>; • Editorial improvement.
03.2	5 November 2013	Editorial revision to correct table in page 1.
03.1	2 January 2013	Editorial revision to correct table in section E.5.
03.0	3 December 2012	Revision required to introduce a provision on reporting actual emission reductions or net GHG removals by sinks for the period up to 31 December 2012 and the period from 1 January 2013 onwards (EB 70, Annex 11).
02.0	13 March 2012	Revision required to ensure consistency with the "Guidelines for completing the monitoring report form" (EB 66, Annex 20).
01.0	28 May 2010	EB 54, Annex 34. Initial adoption.
Decision Class: Regulatory Document Type: Form Business Function: Issuance Keywords: monitoring report		