



**Monitoring report form
(Version 04.0)**

MONITORING REPORT

Title of the project activity	Caieiras landfill gas emission reduction
Reference number of the project activity	0171
Version number of the monitoring report	4
Completion date of the monitoring report	12/05/2015
Registration date of the project activity	09/03/2006
Monitoring period number and duration of this monitoring period	Monitoring period: #9 13/12/2013 – 12/06/2014
Project participant(s)	Essencis Soluções Ambientais S.A. Nordic Environment Finance Corporation
Host Party(ies)	Brazil
Sectoral scope and selected methodology(ies), and where applicable, applied standardized baseline(s)	<u>Sectoral Scope:</u> 13 - Waste handling and disposal <u>Selected Methodology:</u> ACM0001 - "Flaring or use of landfill gas" (version 13.0.0)
Estimated amount of GHG emission reductions or net anthropogenic GHG removals by sinks for this monitoring period in the registered PDD	506,165 tCO ₂ e
Actual GHG emission reductions or net anthropogenic GHG removals by sinks achieved in this monitoring period	233,264 tCO ₂ e
Actual GHG emission reductions or net anthropogenic GHG removals by sinks achieved during the period up to 31 December 2012(if applicable)	-
Actual GHG emission reductions or net anthropogenic GHG removals by sinks achieved during the period from 1 January 2013 onwards (if applicable).	233,264 tCO ₂ e

SECTION A. Description of project activity

A.1. Purpose and general description of project activity

>>

The CDM project activity “Caieiras landfill gas emission reduction” is implemented at the CTR Caieiras landfill. The project activity promotes real and measureable permanent greenhouse gas (GHG) emission reductions through collection and destruction (combustion in high temperature enclosed flares) of landfill gas (LFG) that is generated at this landfill. LFG is rich in methane (CH₄), a powerful GHG. The CTR Caieiras landfill was built in year 2002 and has been operated by the project owner and host-country project participant Essencis Soluções Ambientais S.A. since its commissioning date in September 2002. The project's LFG collection and destruction system was completely implemented at the CTR Caieiras landfill as part of the implementation of the project activity in February 2007.

The construction of the entire project's LFG capture and destruction system (using an integrated LFG collection infrastructure (collection wells and pipeline) and high temperature enclosed flares) was initiated in March 2006 and was concluded in December 2006. Equipment and instruments related testing and commissioning phases occurred in January 2007. The official starting of continuous monitoring data measurement and recording was initiated on 01/02/2007.

LFG has been continuously generated at the CTR Caieiras landfill as a result of anaerobic decomposition of municipal solid waste (MSW) that has been historically disposed at the landfill. The project activity so far encompasses the following components/infrastructure:

- (i) Capturing of LFG through a set of LFG collecting wells that are interconnected through an integrated LFG collection pipeline network
- (ii) Destruction of all collected LFG (which is collected by the LFG collecting wells and transported through the LFG collection pipeline network) by combustion (in the high temperature enclosed flares that are installed in the project's LFG destruction facility).

As indicated in the registered version of the PDD valid for the 2nd 7-year renewable crediting period of the project activity (hereafter denominated as PDD), the project design (under its current configuration) does not encompass any utilization of LFG. The project activity was implemented and remains being operated without having any share of collected LFG being sold as gaseous fuel to a local industry (in order to be combusted in boilers) or being used as gaseous fuel to be supplied to power a thermal desorption unit or to an electricity generation facility¹. During the monitoring period from 13/12/2013 to 12/06/2014 no collected LFG was thus utilized as gaseous fuel for electricity generation, as gaseous fuel for boilers or for any other economic purpose, other than being destroyed through combustion in the installed high temperature enclosed flares as part of the operation of the project activity.

¹ Regarding the currently not any longer considered potential utilization of collected LFG (as previously indicated in the PDD valid for the currently expired 1st 7-year crediting period), the PDD valid for the 2nd 7-year renewable crediting period includes relevant disclaimers in the following two explanative boxes that are included in the PDD:

- Section A.1 / Box 1 – *Further clarifications about the earlier expected (and currently not any longer expected) potential utilization of collected LFG as (a) gaseous fuel for electricity generation and/or (b) gaseous fuel in industrial boiler(s) (at industrial facility located outside the limits of the CTR Caieiras landfill) and/or (c) as gaseous fuel for a previously existing thermal desorption unit (TDU) under both the baseline and project scenarios.*
- Section A.3 / Box 2 - *Occurred pilot tests/evaluation of a portable electricity generation facility fuelled by collected LFG at CTR Caieiras Landfill (using LFG collected by the project activity “Caieiras landfill gas emission reduction”) during a no longer than 3-month period within the 1st crediting period*

By the end of the considered monitoring period, the implemented project's LFG collection system encompassed about 320 vertical LFG collection wells². No horizontal LFG collection trenches have so far been utilized for collecting LFG at the CTR Caieiras landfill. During the considered monitoring period, LFG was collected at the CTR Caieiras landfill through the utilization of 5 centrifugal blowers that are connected to the project's LFG collecting pipeline network. As part of the operation of the project activity, all collected LFG is conducted through the project's LFG collecting pipeline network via the 3 main pipelines that are interconnected to a main pipeline located in the project's LFG destruction facility. This main pipeline is split in an upstream section located in the project's LFG destruction facility into 4 individual and symmetric pipelines (1 individual pipeline for each one of the 4 installed high temperature enclosed flares). After reaching the flares, LFG is combusted under high temperature, controlled and monitored conditions.

The amount and quality of collected LFG that is sent to the installed flares was continuously measured, recorded and reported during the considered monitoring period. Monitoring activities encompass measurement, recording and reporting of (i) LFG flow sent to the flares, (ii) CH₄ content of collected LFG, (iii) LFG temperature and (iv) LFG pressure. As also established in the project's monitoring procedure valid for the 2nd 7-year crediting period, (iv) the operational status/conditions of the high temperature enclosed flares (flare "on"/ "off") as well as (v) the compliance of the set of flares with operational requirements (as established by the flare equipment manufacturer) in terms of temperature of exhaust gas of the flare and flow rate were also continuously monitored³.

All LFG related monitoring instruments/equipment (incl. LFG flow meter, LFG pressure sensor, LFG temperature sensor, LFG CH₄/O₂/CO₂ content gas analyser) are installed in the main LFG pipeline. Thermocouples for measuring temperature of the exhaust gas of the flares are installed in the upper section of each flare. The installed 4 high temperature enclosed flares are also equipped with ultra-violet (UV) flame detectors (of which status (flare "on" or flare "off") is also continuously monitored). During the considered monitoring period, the set of LFG and flaring related continuous measurements + continuous measurements of temperature of the exhaust gas of the flares + measurement of the status of the flares are recorded and reported with an every minute frequency. Recorded data is stored in a customized computerized database that located in the project's control room.

² It is important to note that, as outlined in the Section B.6.1 of the PDD, besides of having LFG being effectively collected and destroyed by the active (forced suction) LFG collection and destruction system that is implemented and has operated as part of the project activity (which currently comprises more than 320 LFG collection wells), there are still existing a set of conventional passive LFG venting/combustion drains spread around the landfill. In these conventional and passive LFG venting/combustion drains, very small share of generated LFG has been sometimes combusted and sometimes just directly vented into the atmosphere. These remaining conventional LFG venting/combustion infrastructure are not connected to the project activity's LFG collection pipeline network. Unfortunately, venting of LFG has been a practice before and even after the implementation of the project. Although appropriately addressing safety and odor concerns are operational requirements for the CTR Caieiras landfill, the very large area/size of this landfill makes it difficult to keep every single existing conventional drains aight or even convert such drains into appropriate LFG collection wells (and get them connected to the project activity). Moreover, prior of the decision to implement the project activity, sporadic combustion under uncontrolled conditions of minor and not defined share of generated LFG by non-defined fraction of the existing LFG venting/combustion drains (that are not part of the project activity) has been assumed as per applicable design, construction and operational requirements for the CTR Caieiras landfill as a deemed sufficient practice to address safety and odor concerns. A relevant related explanative disclaimer titled "*Challenging/difficulties in converting all conventional and passive LFG venting/combustion drains into appropriated active LFG collecting well connected to the project activity*" is included under Footnote 63 in Section B.6.1 of the PDD. Footnote 79 (included in Section B.6.2) and "*Step A.2: Determination of $F_{CH_4,BL,y}$* " under Section B.6.1 of the PDD also include further related explanations.

³ As further explained in Section C.1 and D.2 of the PDD valid for the 2nd 7-year crediting period of the project activity, the project's monitoring procedures were revised (when compared to the practice and procedures applied during the 1st 7-year crediting period) in order to have the project activity meeting monitoring requirements as per the registered PDD valid for the 2nd crediting period (that applies the CDM baseline and monitoring methodology ACM0001 (version 13.0.0) + applicable methodological tools).

During the considered monitoring period the project activity was implemented and has operated under the following configuration:

- 3 centrifugal blowers with LFG collection capacity of up to 4,000 Nm³/h each + 2 centrifugal blowers with LFG collection capacity of up to 7,000 Nm³/h each (total of 5 centrifugal blowers)
- 4 enclosed high temperature flares (of which specifications are presented in the PDD).
- All monitoring instruments/equipment which are required for continuously measuring LFG related parameters (LFG flow, CH₄ content in collected LFG, LFG temperature and LFG pressure) + temperature of the exhaust gas of the flares + operational status/conditions of the flares (flare “on”/ “off”) + grid-sourced electricity consumption (of which specifications are presented in Section D.2).

The MSW disposal area at the CTR Caieiras landfill that is currently covered by the project’s LFG collection well has about 567,000 square meters. About 24,000,000 ton of MSW are disposed in such area. During the considered monitoring period, about 34% of the project’s existing LFG collecting wells were connected to the project’s LFG collecting pipeline (in the average)⁴.

Further details about installed GHG abatement equipment are included in Section B.1. Details about all installed monitoring equipment/instruments are made available in Section D.2.

Essencis Soluções Ambientais S.A. (one of the project participants for the project activity and the owner and operator of the CTR Caieiras landfill) has implemented a quality assurance and control (QA/QC) and environmental management (EMS) system for all activities undertaken at the CTR Caieiras landfill. The company’s ISO 9001 and ISO 14001 certified QA/QC/EMS management system was previously implanted in year 2006. The boundary/scope of this QA/QC/EMS system currently also encompasses applicable work procedures for the operation and monitoring of the project activity.

Non-consideration of baseline emissions during the period from 13/12/2013 to 31/12/2013:

It is crucial to note that for the considered monitoring period (from 13/12/2013 to 12/06/2014), baseline emissions for the share of the considered monitoring period that encompasses year 2013 (19-day period from 13/12/2013 to 31/12/2013) are not considered/accounted in the context of the determination of emission reductions for the considered monitoring period.

The unique reason for such non-consideration/non-accounting of baseline emissions for the monitoring period is an existing mutually agreed requirement of the previously signed Emission Reduction Purchase Agreement (ERPA) that is valid for CERs to be issued by the project activity with vintage from year 2014 to year 2020.

As per the terms and conditions of this ERPA (that was previously agreed between the host-country project participant and project operator Essencis Soluções Ambientais S.A. and the Annex-I project participant Nordic Environment Finance Corporation), any Monitoring Report that deals with GHG emission reductions encompassing such 7-year length CER commercialization period should only include emission reductions occurred in this period (from 01/01/2014 to 31/12/2020).

While there are currently no potential buyer for post-2012 project’s CERs issued and/or yet to be issued with vintage up to 31/12/2013; and by also taking into account the current market conditions for the global carbon market (very low prices for CERs and lack of market liquidity); related costs and efforts for performing a CDM verification assessment uniquely for the 19-day period from 13/12/2013 (starting date of the 2nd 7-year crediting period for the project activity) to 31/12/2013 are currently regarded as not justifiable. Due to that, this Monitoring Report does not consider/account baseline emissions valid for such 19-day period within year 2013 (period from 13/12/2013 to

⁴ As part of the normal operation of the CTR Caieiras landfill (and also as part of the normal operation of the project activity), some of the project’s LFG collecting wells are often temporarily disconnected from the project’s LFG collection pipeline in order to facilitate continuous activities of MSW disposal and compacting, thus allowing transit of machinery (wheel loaders and excavators) and trucks as part of the normal operations of the CTR Caieiras landfill. Furthermore, sometimes some of the project’s LFG extracting wells are also often temporarily disconnected from the LFG collection pipeline due to repair, operational and/or maintenance reasons. (welding and other repair services at the wells and/or pipeline, repositioning of the LFG pipeline, maintenance in the head of the LFG wells, etc.).

31/12/2014). Project emissions for such 19-day period are however considered for sake of conservativeness and completeness.

While monitoring records for such 19-day period are reported in the emission reduction calculation spreadsheets that are enclosed to this Monitoring Report (incl. monitoring data for the determination of both baseline and project emissions), baseline emissions for the project activity during such 19-day period (that are estimated on 19,147 tCO₂e) are not considered/accounted in the context of determination of emission reductions achieved during the whole considered monitoring period. By applying a conservative approach, project emissions for such 19-day period (due to consumption of both grid-sourced electricity and LPG by the project activity) were considered/accounted for the determination of emission reductions achieved by the project activity.

GHG emission reductions achieved by the project activity during the considered monitoring period from 13/12/2013 to 12/06/2014 (with baseline emissions for the period from 13/12/2013 to 31/12/2013 not being considered/accounted): 233,264 tCO₂e

A.2. Location of project activity

>>

The CTR Caieiras landfill is located at Bandeirantes highway, km 33 in the municipality of Caieiras, São Paulo State, in Brazil. The project site is located in the extreme Northeast region of Caieiras municipality. Caieiras is one of the municipalities encompassing the Metropolitan Region of São Paulo (RMSP).

The project site has the following geographical coordinates:

- 23°20'40" S (-23.3444)
- 46°46'20" W (-46.7722)

A.3. Parties and project participant(s)

Party involved (host) indicates a host Party)	Private and/or public entity(ies) project participants (as applicable)	Indicate if the Party involved wishes to be considered as project participant (Yes/No)
Brazil (host)	Essencis Soluções Ambientais S.A.	No
Norway	Nordic Environment Finance Corporation	No

A.4. Reference of applied methodology and standardized baseline

>>

The project activity applies the following large-scale CDM baseline and monitoring methodology:

- ACM0001 - "Flaring or use of landfill gas" (version 13.0.0).
(http://cdm.unfccc.int/filestorage/E/Y/F/EYFHCV3K4J5P06DTQSG9WLMOBNUX2I/EB67_repan12_ACM0001_ver13.0.0.pdf?t=aWV8bmVmZHIhFDAbkn62RDZuyjHVzDOMoxMx)

For the considered monitoring period, as also established in the PDD, the following methodological tools are also applied⁵:

⁵ The PDD also refers to the methodological tool "Emissions from solid waste disposal sites" (version 06.0.1, EB66). However, it is crucial to note that, as outlined in the PDD, applicable guidance of this methodological tool is only applied in the context of ex-ante estimation of emission reductions to be achieved by the project activity during the 2nd 7-year crediting period. This methodological tool is not applied for the ex-post determination of emission reductions achieved by the project activity.

- “Tool to calculate baseline, project and/or leakage emissions from electricity consumption” (version 01)
(<http://cdm.unfccc.int/methodologies/PAMethodologies/tools/am-tool-05-v1.pdf>).

The application of this methodological tool refers to the ex-post application of the latest version of the methodological tool “Tool to calculate the emission factor for an electricity system” (version 04.0)
(<http://cdm.unfccc.int/methodologies/PAMethodologies/tools/am-tool-07-v4.0.pdf>)

- “Tool to calculate project or leakage CO₂ emissions from fossil fuel combustion” (version 02)
(<http://cdm.unfccc.int/methodologies/PAMethodologies/tools/am-tool-03-v2.pdf>)
- Project emissions from flaring (version 02.0.0, EB 68)
(<http://cdm.unfccc.int/methodologies/PAMethodologies/tools/am-tool-06-v2.0.pdf>);
- Tool to determine the mass flow of a greenhouse gas in a gaseous stream (version 02.0.0, EB 61)
(<http://cdm.unfccc.int/methodologies/PAMethodologies/tools/am-tool-08-v2.0.0.pdf>);

A.5. Crediting period of project activity

>>

From 13/12/2013 to 30/03/2020 (2nd 7-year renewable crediting period).

A.6. Contact information of responsible persons/ entities

>>

Completion date for the application of the CDM-MR-FORM: 10/01/2015

Responsible entity / person:

Mr. Nuno Barbosa
nuno@unicarbo.com.br
UniCarbo Energia e Biogás Ltda.
São Paulo, Brazil

UniCarbo Energia e Biogás Ltda. is a CDM consulting and advisory services company hired by the project participant Essencis Soluções Ambientais S.A. UniCarbo Energia e Biogás Ltda. is not a project participant.

SECTION B. Implementation of project activity

B.1. Description of implemented registered project activity

>>

The total technical Municipal Solid Waste (MSW) disposal capacity for the CTR Caieiras landfill is defined as about 60,000,000 ton of MSW. By the end of the considered monitoring period, an accumulated amount of about 24,000,000 ton of MSW was disposed in this landfill. During the considered monitoring period, MSW has been disposed with an average rate of about 3,400,000 ton of MSW per year⁶. The CTR Caieiras landfill is currently not expected to close prior to year 2030.

⁶ It is relevant to note that from year 2007, a significant increase in daily MSW disposal at the CTR Caieiras landfill occurred. Such occurred increase and its impact over baseline emissions for the project activity are explained in Section A.3 of the PDD.

At the end of the considered monitoring period, the implemented project's LFG collection system consisted of about 320 operational LFG collecting wells interconnected through a high density polyethylene pipeline network. The LFG collecting wells are used to extract LFG from inner section of the landfill. Collected LFG is transported to the project's LFG destruction facility (enclosed high temperature flares) through the high density polyethylene pipeline network passing through condensation pots (where most of the humidity in collected LFG is removed through condensation).

During the considered monitoring period, collected LFG has been sucked and pressurized by the installed 5 centrifugal blowers powered by electricity motors. After passing through the centrifugal blowers, temperature of collected LFG is significantly increased (typical temperature increment of about 30°C or more). The quantity and quality of collected LFG that is sent to the high temperature enclosed flares are measured by following applicable guidance of ACM0001 (version 13.0.0) and the methodological tool "Tool to determine the mass flow of a greenhouse gas in a gaseous stream" (version 02.0.0), with measurement/calculation option "Option C" being applied. In accordance with such measurement/calculation approach, the absolute humidity of the gaseous stream is not required to be determined. Fraction of CH₄ in collected LFG stream as well as LFG flow (parameters "Volumetric flow of LFG stream in time interval t on a wet basis" ($V_{t,wb}$) and "Volumetric fraction of CH₄ in the collected LFG in time interval t on a wet basis" ($v_{CH_4,t,wb}$) respectively) are assumed as monitored on the same basis.

As per the construction and operational design of the CTR Caieiras landfill, a geo-membrane of PVC or similar material is expected to be installed to cover disposed MSW in a waste cell of the landfill by the time of the closure of the cell in question. While no single cell of the CTR landfill has so far achieved its final configuration, no geo-membrane has been installed to cover disposed MSW so far⁷.

During the whole monitoring period from 13/12/2013 to 12/06/2014, the project's LFG destruction facility operated under the following equipment/instrument configuration:

- 3 condensation trap to separate liquids in the collected LFG (leachate and condensate);
- 1 centrifugal blower manufactured by Anton Blaselbauer Artécnica Ltda. powered by electric motor with nameplate power of 125 HP.(93.2 kW)
- 2 centrifugal blower manufactured by Anton Blaselbauer Artécnica Ltda. powered by electric motors with nameplate power of 100 HP.(74.5 kW)
- 2 centrifugal blower manufactured by Anton Blaselbauer Artécnica Ltda. powered by electric motors with nameplate power of 200 HP.(149.1 kW)
- LFG monitoring equipment/instruments:
 - LFG mass flow meter
 - LFG temperature sensor,
 - LFG pressure sensor,
 - CH₄/O₂/CO₂ content gas analyzer,
 - Thermocouples (1 thermocouple for each enclosed flare (to measure temperature in the exhaust gases of the flare))
 - UV flame detectors (1 flame detector in each enclosed flare (to monitor the operational and flame status of each one of the installed flares))
- 4 high temperature enclosed flares manufactured by BTS - Termodinâmica de Sistemas Ltda.
- 2 electricity meters (one of the electricity meters is used for measuring electricity consumption of the fourth blower only). Installed electricity meters are manufactured by Kron Medidores Ltda. These electricity meters are used to measure the consumption of grid electricity by the project's related equipment.

Further details about monitoring instruments/equipment are included in Section D.2.

⁷ It is important to note that as per the design of the CTR Caieiras landfill, geo-membrane is actually placed in the bottom and sides of the cells of the landfill (prior of disposing MSW in the cell area) for sealing purposes.

During the 1st months of the 2nd semester of year 2013 the project's monitoring system and working procedures applied for monitoring the project activity were both upgraded in order to meet all new and additional monitoring requirements valid for the 2nd 7-year crediting period (as established by the CDM baseline and monitoring methodology ACM0001 (version 13.0.0) + applicable methodological tools) when compared to monitoring requirements valid for the already expired 1st 7-year crediting period. In accordance with forecasts previously indicated in the PDD, Essencis Soluções Ambientais S.A. worked on the required changes in terms of monitoring equipment/instruments and related monitoring working procedures (e.g. procurement for new equipment/instruments, review of monitoring and working procedures, etc.) in order to have the project activity appropriately and reasonably meeting applicable monitoring requirements of ACM0001 (version 13.0.0) + applicable methodological tools.

The following pictures provide overview of the project activity.

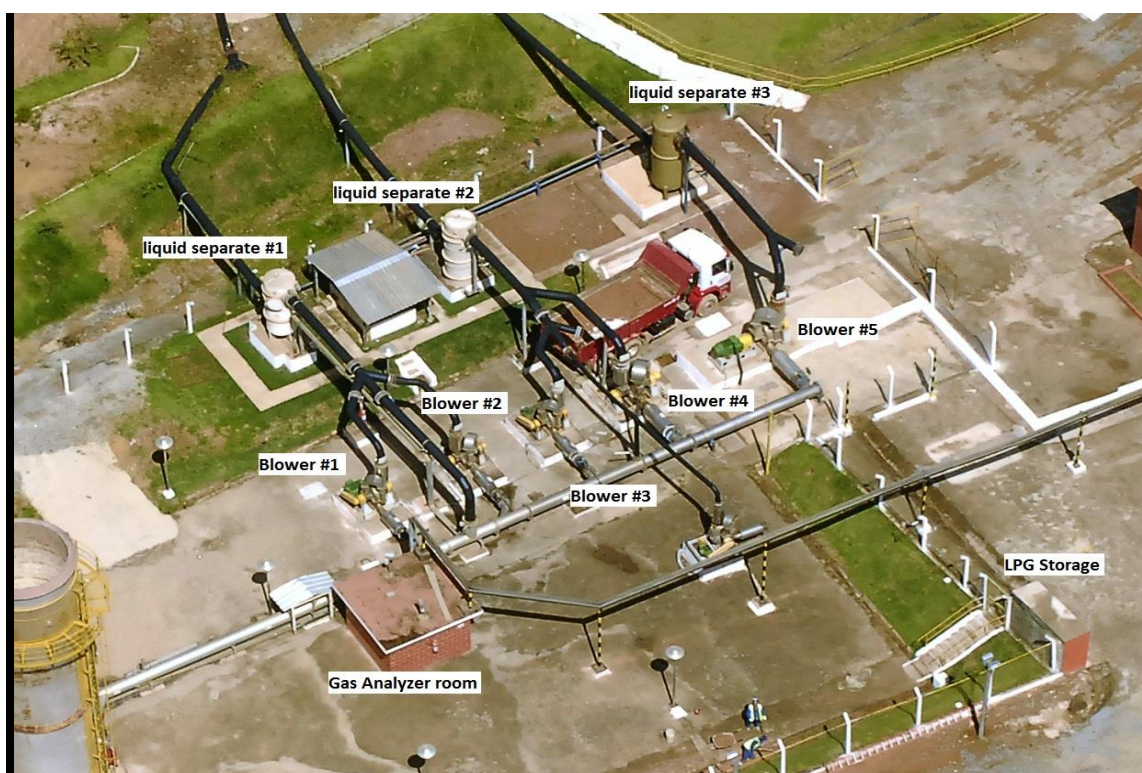


Figure 1 – Partial view of the LFG destruction station (LFG pipeline, blowers and condensation traps)



Figure 2 – Partial view of the project's LFG destruction plant (picture dated January 2012).



Figure 3 – Aerial view of the project's LFG destruction plant (picture dated April 2013).

In general, the project activity was implemented and has operated under full conformance with the previously conceived project design. During the considered monitoring period, the project activity faced events that required the project activity to become temporarily out of operation due to different reasons (incl. temporary interruption in the supply of grid-sourced electricity, planned and unplanned equipment maintenance/repair events, performance of regular calibration events, drainage of condensate from the project's LFG pipeline, etc.). Also during the considered monitoring period, there were limited time periods (with less than 30 minutes each period) with the project activity under

operation (LFG being collected and destroyed) in which unexpected and intermittent electrical and data communication problems/failures occurred (intermittent problems/failures related to the PLC panel and/or signal from the LFG pressure sensor, LFG temperature sensor and two of the installed thermocouples). For these particular periods with the project activity operating with intermittent electrical and data communication problems/failures, generation of reliable and consistent monitoring records for continuous measurements performed by the LFG pressure sensor, LFG temperature sensor and/or the thermocouples (installed on flare 2 and flare 4) did not occur. Thus, no emission reductions are accounted for these particular time periods (as reflected in the emission reduction calculation spreadsheets that are enclosed to this Monitoring Report).

The CTR Caieiras landfill is regarded as a very well-designed and well-managed landfill. It applies the best practice in Brazil in terms of landfill design and operation. As established by the valid environmental and operational permits valid for the whole landfill (incl. operation of the project activity), disposed MSW is constantly well covered and levelled with the use of heavy equipment (excavators, compacting equipment, etc.). Furthermore, strict safety requirements are defined and followed as part of the operation of the landfill by using a preventative health and safety approaches.

No practice to increase the amount of methane generated at the CTR Caieiras landfill has ever been applied. While the project activity represents real improvement in terms of LFG management at the landfill when compared to the situation prior to the implementation of the project activity (baseline scenario), no change in terms of previously conceived MSW disposal practice at the CTR Caieiras landfill was ever promoted or influenced by the implementation and operation of the project activity. Further related details are included in Section D.2 (under details for the monitoring parameter "Management of SWDS").

Since the project's operation starting in February 2007, no backup captive off-grid electricity generator has ever been used to meet the project's electricity demand during eventual interruptions of the supply of grid-sourced electricity to the project activity. While the local electricity grid is regarded as reliable (without regular interruptions in the supply of grid-sourced electricity), in the occurrence of interruptions in supply of grid-sourced electricity, the operation of the project activity is thus temporarily interrupted. Currently it is not planned the installation of any backup captive off-grid electricity generator during the 2nd 7-year crediting period.

B.2. Post registration changes

B.2.1. Temporary deviations from registered monitoring plan, applied methodology or applied standardized baseline

>>

Not applicable.

B.2.2. Corrections

>>

Not applicable.

B.2.3. Permanent changes from registered monitoring plan, applied methodology or applied standardized baseline

>>

Not applicable.

B.2.4. Changes to project design of registered project activity

>>

Not applicable.

B.2.5. Changes to start date of crediting period

>>

Not applicable.

B.2.6. Types of changes specific to afforestation or reforestation project activity

>>

Not applicable.

SECTION C. Description of monitoring system

>>

As part of the application of the designed monitoring plan valid for the 2nd 7-year crediting period of the project activity, as reported in the PDD, LFG and flaring related monitoring data are automatically measured, processed and recorded with the use of related monitoring instruments/equipment, a Programmable Logic Controller (PLC) unit, a SQL based database (with customized design and configuration) that are all integrated to a data supervisory system (SCADA) of which design and configuration are customized for the project activity. The project's data supervisor system is sourced by Elipse Software Ltda. (model: e3). During the 1st months of the second half of 2013, both the project's data supervisor system and the SQL based database were upgraded in order to have the project's monitoring system under compliance with monitoring requirements of ACM0001 (version 13.0.0) + applicable methodological tools⁸.

During the considered monitoring period, continuous measurements of LFG flow, LFG pressure, LFG temperature, LFG CH₄ content, LFG O₂ content, LFG CO₂ content⁹, temperature of the exhaust gas (for each installed flare) and status of the flame detector (for each installed flare) were processed by the project's PLC unit and recorded within an every-minute frequency by the project's SQL format database.

As per the implemented data reporting and emission reduction calculation procedures applicable for the 2nd 7-year crediting period of the project activity, two sets of data files (incl. LFG and flaring related monitoring records) were generated for each one of the 7 months encompassed by the considered monitoring period as follows:

- One MS-Excel format spreadsheet file
- One PDF format data file

Both sets of data files contain all LFG and flaring related monitoring records for every 1-month period encompassed by the considered monitoring period. While data in MS-Excel format is handled as a primary data input for the performance of emission reduction calculations (data is used as input data for the compilation of monthly emission reduction calculation spreadsheets that are enclosed to this Monitoring Report), the PDF format files (which also lists/reports all LFG and flaring related monitoring records in column/table format within an every-minute frequency for each individual month encompassed by the considered monitoring period) are kept storage and are considered as

⁸ During the whole 1st 7-year crediting period for the project activity, both the project's data supervisor system and the SQL based database were configured in order to have the project's monitoring system under compliance with the applied previous version of ACM0001 (version 2).

⁹ Continuous monitoring of O₂ and CO₂ content in collected LFG are not required as per ACM0001 (version 13.0.0) + applicable methodological tool. The monitoring plan of the registered PDD does not refer to monitoring of O₂ and CO₂ content in collected LFG either. However, as part of the operation of the project activity content of O₂ and CO₂ in collected LFG are continuously measured in order to meet safety and operational requirements.

permanent proof of authenticity (cross-checking source) of data previously retrieved from the SQL database that was exported to MS-Excel format data and later utilized in the context of the determination of emission reductions achieved by the project activity for the considered monitoring period.

The project's data supervisory system (which is linked/connected to the SQL database) includes in its user interface functionalities for regularly generating both the MS-Excel format data (MS-Excel format spreadsheet files) as well as PDF format data (PDF format data files) upon request of the system user through the functionalities (user buttons) named "*Exporta Excel*" and "*Exporta PDF*" respectively.

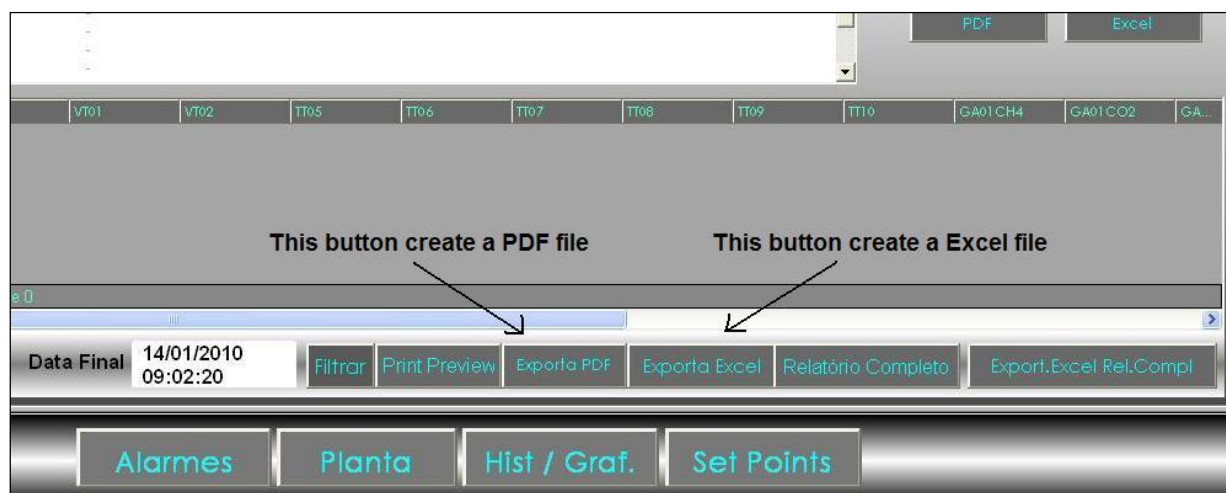


Figure 4 – Zoom view of the functionalities (user buttons) in the user interface of the project's supervisory system for generating the MS-Excel format and PDF format files with every minute monitoring data (user buttons "*Exporta PDF*" and "*Exporta Excel*")

As per the project's operational procedure valid for the 2nd 7-year crediting period, the following working routine is monthly performed by the project operational staff in order to appropriately report LFG and flaring (temperature of exhaust gas of the flares and flare status) related monitoring records:

- 1) Every month, a MS-Excel format spreadsheet data file with LFG and flaring related monitoring records (raw data files) is generated by using the functionality "*Exporta Excel*" of the project's supervisory system. Each generated MS-Excel format file includes monitoring data reported for a full month. A PDF format data file with the same LFG and flaring related monitoring records is also generated for the month in question by using the functionality "*Exporta PDF*" of the project's supervisory system.
- 2) The content of every monthly raw data file (in MS-Excel format) is used as input data in customized and pre-formatted monthly MS-Excel format emission reduction calculation spreadsheet template/model (designed by the project participant Essencis Soluções Ambientais S.A.). This MS-Excel based template is internally denominated as "*MMYYYY*", where "*MM*" is the number of the month and "*YYYY*" is the year of the input data. Each generated monthly MS-Excel format emission reduction calculation spreadsheet contains the partial determination of baseline emissions for the month in question (determination of monthly accumulated values for the calculation parameters "Amount of methane in the LFG which is flared and/or used in the project activity" ($F_{CH4,PJ,y} = F_{CH4,flared,y}$) and "Amount of methane in the LFG that would be flared in the baseline scenario (absence of project activity)" ($F_{CH4,BL,y}$)).

As per applicable documented working procedures, the project activity is managed by the CDM Project Superintendent at Essencis Soluções Ambientais S.A. The CDM Project Superintendent supervises the CDM Project supervisor who is the one in charge of all monitoring related activities

(handling of monitoring data, preparation of both the Monitoring Report and emission reduction calculation spreadsheets). The operation of the project activity and the application of the monitoring plan is responsibility of the CDM Project Supervisor, who reports all relevant project related issues to the CDM Project Superintendent (operation status of the project activity, results and events, collection and storage of monitoring data, calibration events, and maintenance of equipment).

For the considered monitoring period, both the CDM Project Superintendent and the CDM Project supervisor are fully supported by CDM specialists (consultants) from the CDM consultancy company UniCarbo Energia e Biogás Ltda. The CDM specialists (consultants) supported the project team in operational and monitoring related issues.

The diagram below summarizes the hierarchy for the project management:

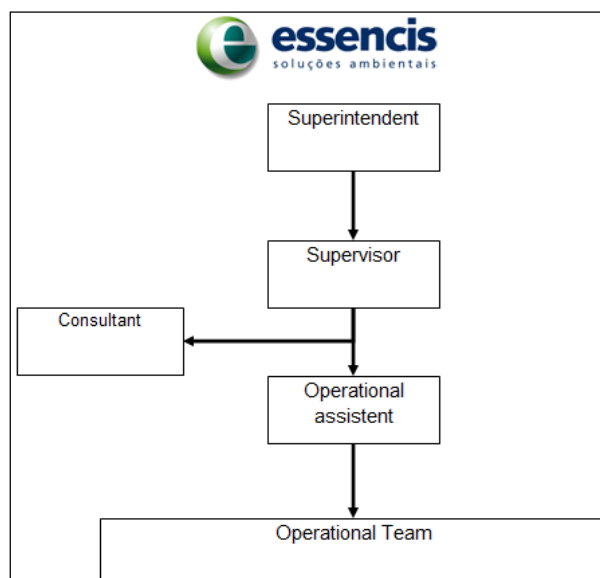


Figure 5 - Hierarchy for the project management of the project activity

The project's operational and management structure relies on trained staff with responsibilities clearly defined. All collaborators and employees involved with operation and monitoring of project activity are trained internally and/or externally. Training efforts includes *inter alia*:

- a) Development and maintenance of general competence about LFG generation and collection;
- b) Review of equipment operational principles and captors;
- c) Maintenance and calibration requirements for project's related equipment;
- d) Procedures for monitoring data gathering and handling¹⁰;
- e) Emergency and safety procedures.

¹⁰ While the PDD valid for the 2nd 7-year crediting period (that applies ACM0001 (version 13.0.0) + applicable methodological tools) includes somehow differentiated monitoring requirements (when compared to the PDD valid for the 1st 7-year crediting period (that applies ACM0001 (version 2), of which monitoring requirements were followed by the project's operational staff during the 1st crediting period from year 2007 to 2013); additional training were thus provided to the project's operational and monitoring staff in order to have such differentiated monitoring requirements being met. The project activity monitoring infrastructure was also upgraded in order to fulfil such additional monitoring requirements.

SECTION D. Data and parameters

D.1. Data and parameters fixed ex ante or at renewal of crediting period

Data / Parameter:	OX_{top_layer}
Unit:	Dimensionless
Description:	Fraction of methane that would be oxidized in the top layer of the SWDS in the baseline.
Source of data:	The PDD refers to the default value as per the CDM baseline and monitoring methodology ACM0001 (version 13.0.0). The value is consistent with how oxidation is accounted for in the methodological tool "Emissions from solid waste disposal sites" (version 06.0.1).
Value(s) applied:	0.1
Purpose of data:	Calculation of baseline emissions
Additional comment:	-

Data / Parameter:	GWP_{CH₄}
Unit:	tCO ₂ /tCH ₄
Description:	Global Warming Potential of CH ₄
Source of data:	<p>The PDD refers to the "Global Warming Potential for Given Time Horizon" in table 2.14 of the errata to the contribution of Working Group I to the Fourth Assessment Report of the Intergovernmental Panel on Climate Change, based on the effects of greenhouse gases over a 100-year time horizon. Available at: www.ipcc.ch/publications_and_data/ar4/wg1/en/ch2s2-10-2.html#table-2-14</p> <p>The applied value is also in accordance with the "Standard for application of the global warming potential to clean development mechanism project activities and programmes of activities for the second commitment period of the Kyoto Protocol".</p>
Value(s) applied:	25
Purpose of data:	Calculation of baseline emissions
Additional comment:	-

Data / Parameter:	R_u
Unit:	Pa.m ³ /kmol.K
Description:	Universal ideal gases constant

Source of data:	The PDD refers to the default value as per the “Tool to determine the mass flow of a greenhouse gas in a gaseous stream” (version 02.0.0).
Value(s) applied:	8,314
Purpose of data:	Calculation of baseline emissions
Additional comment:	-

Data / Parameter:	MM _k								
Unit:	kg/kmol								
Description:	Molecular mass of gas <i>k</i>								
Source of data:	The PDD refers to the default value as per the “Tool to determine the mass flow of a greenhouse gas in a gaseous stream” (version 02.0.0).								
Value(s) applied:	<p>As outlined in the PDD, for considered gases <i>k</i> that are greenhouse gases (GHGs), the values in the table below are applied for MM_i. As per the “Tool to determine the mass flow of a greenhouse gas in a gaseous stream”: “<i>The determination of the molecular mass of the gaseous stream (MM_{t,db}) requires measuring the volumetric fraction of all gases (k) in the considered gaseous stream. However as a simplification, only the volumetric fraction of gases k that are greenhouse gases and are considered in the emission reduction calculation in the underlying methodology must be monitored and the difference to 100% may be considered as pure nitrogen. The simplification is not acceptable if it is differently specified in the underlying methodology.</i>”</p> <p>ACM0001 (version 13.0.0) does not include any restriction to such simplification. Thus, only the volumetric fraction of gases that are greenhouse gases and are considered in related calculations (CH₄ in the particular case of the project activity) should be considered and the difference to 100% is just considered as pure nitrogen.</p> <table><tr><td>Compound</td><td>Structure</td><td>Molecular mass (kg/mol)</td></tr><tr><td>Nitrogen</td><td>N₂</td><td>28.01</td></tr></table>			Compound	Structure	Molecular mass (kg/mol)	Nitrogen	N ₂	28.01
Compound	Structure	Molecular mass (kg/mol)							
Nitrogen	N ₂	28.01							
Purpose of data:	Calculation of baseline emissions								
Additional comment:	-								

Data / Parameter:	MM_i		
Unit:	kg/kmol		
Description:	Molecular mass of greenhouse gas <i>t</i>		
Source of data:	The PDD refers to the default value as per the “Tool to determine the mass flow of a greenhouse gas in a gaseous stream” (version 02.0.0).		

Value(s) applied):	As outlined in the PDD, the following value of molecular mass is applicable for CH ₄ (the only GHG which is considered):		
	Compound	Structure	Molecular mass (kg/mol)
	Methane	CH ₄	16.04
Purpose of data:	Calculation of baseline emissions		
Additional comment:	-		

Data / Parameter:	P _n
Unit:	Pa
Description:	Total pressure at normal conditions
Source of data:	The PDD refers to the default value as per the “Tool to determine the mass flow of a greenhouse gas in a gaseous stream” (version 02.0.0).
Value(s) applied):	101,325
Purpose of data:	Calculation of baseline emissions
Additional comment:	In accordance with the PDD, the ex-ante determined parameters Temperature at normal conditions (T _n) and Total pressure at normal conditions (P _n) are used to convert measurements of LFG flow to normalized cubic meters (Nm ³).

Data / Parameter:	MM _{H₂O}
Unit:	kg/kmol
Description:	Molecular mass of water
Source of data:	The PDD refers to the default value as per the “Tool to determine the mass flow of a greenhouse gas in a gaseous stream” (version 02.0.0).
Value(s) applied):	18.0152
Purpose of data:	Calculation of baseline emissions
Additional comment:	-

Data / Parameter:	T_n
Unit:	K
Description:	Temperature at normal conditions
Source of data:	The PDD refers to the default value as per the “Tool to determine the mass flow of a greenhouse gas in a gaseous stream” (version 02.0.0).
Value(s) applied:	273.15
Purpose of data:	Calculation of baseline emissions
Additional comment:	In accordance with the PDD, the ex-ante determined parameters Temperature at normal conditions (T_n) and Total pressure at normal conditions (P_n) are used to convert measurements of LFG flow to normalized cubic meters (Nm^3).

Data / Parameter:	$TDL_{grid,y}$
Unit:	Dimensionless
Description:	Average technical transmission and distribution losses for grid sourced electricity consumed by the project activity.
Source of data:	The PDD refers to the applicable default as per the “Tool to calculate baseline, project and/or leakage emissions from electricity consumption” (version 01).
Value(s) applied:	20%
Purpose of data:	Calculation of project emissions (due to consumption of grid-sourced electricity by the project activity).
Additional comment:	-

Data / Parameter:	W_{BM}
Unit:	%
Description:	Weighting of build margin emissions factor
Source of data:	The PDD refers to the applicable default value as per the “Tool to calculate the emission factor for an electricity system” (version 03.0.0). The selected value is valid for the whole 2 nd 7-year renewable crediting period.
Value(s) applied:	0.75 (75%)

Purpose of data:	Calculation of project emissions (due to consumption of grid-sourced electricity by the project activity).
Additional comment:	-

Data / Parameter:	W_{OM}
Unit:	%
Description:	Weighting of operating margin emissions factor
Source of data:	The PDD refers to the applicable default value as per the “Tool to calculate the emission factor for an electricity system” (version 03.0.0). The selected value is valid for the whole 2 nd 7-year renewable crediting period.
Value(s) applied:	0.25 (25%)
Purpose of data:	Calculation of project emissions (due to consumption of grid-sourced electricity by the project activity).
Additional comment:	-

Data / Parameter:	SPEC_{flare}
Unit:	°C (for temperature values) Nm ³ /h (for LFG flow values) Number of days (for maintenance schedule interval values)
Description:	Manufacturer’s flare specifications for temperature, flow rate and maintenance schedule interval.
Source of data:	The PDD refers to data as per the flare manufacturer. Data is used as a reference for later ex-post determination of values of flare efficiency ($\eta_{\text{flare},m}$) for each individual high temperature enclosed flare in the context of determination of baseline emissions.

Value(s) applied:	Flare 1, Flare 2, Flare 3 and Flare 4: <table border="1" data-bbox="496 246 1426 940"> <tr> <td> SPEC_{flare, Flare 1} SPEC_{flare, Flare 2} SPEC_{flare, Flare 3} SPEC_{flare, Flare 4} </td><td>Min.</td><td>Max.</td></tr> <tr> <td>Operational LFG flow for each flare (for continuous operation):</td><td>650 Nm³/h</td><td>6,500 Nm³/h</td></tr> <tr> <td>Required temperature of the exhaust gas of the flare (to ensure LFG destruction (combustion) under high CH₄ destruction efficiency):</td><td>500 °C</td><td>1,200 °C</td></tr> <tr> <td>Required minimum frequency for inspection and maintenance service in each flare (incl. inspection in the conditions of the flare isolation ceramics revetment material):</td><td colspan="2">Min. every 6 months</td></tr> <tr> <td>Required/recommended minimum frequency for replacement of the flare isolation ceramics revetment material in each flare:</td><td colspan="2">after 10 years of regular and appropriate operation</td></tr> </table>			SPEC _{flare, Flare 1} SPEC _{flare, Flare 2} SPEC _{flare, Flare 3} SPEC _{flare, Flare 4}	Min.	Max.	Operational LFG flow for each flare (for continuous operation):	650 Nm ³ /h	6,500 Nm ³ /h	Required temperature of the exhaust gas of the flare (to ensure LFG destruction (combustion) under high CH ₄ destruction efficiency):	500 °C	1,200 °C	Required minimum frequency for inspection and maintenance service in each flare (incl. inspection in the conditions of the flare isolation ceramics revetment material):	Min. every 6 months		Required/recommended minimum frequency for replacement of the flare isolation ceramics revetment material in each flare:	after 10 years of regular and appropriate operation	
SPEC _{flare, Flare 1} SPEC _{flare, Flare 2} SPEC _{flare, Flare 3} SPEC _{flare, Flare 4}	Min.	Max.																
Operational LFG flow for each flare (for continuous operation):	650 Nm ³ /h	6,500 Nm ³ /h																
Required temperature of the exhaust gas of the flare (to ensure LFG destruction (combustion) under high CH ₄ destruction efficiency):	500 °C	1,200 °C																
Required minimum frequency for inspection and maintenance service in each flare (incl. inspection in the conditions of the flare isolation ceramics revetment material):	Min. every 6 months																	
Required/recommended minimum frequency for replacement of the flare isolation ceramics revetment material in each flare:	after 10 years of regular and appropriate operation																	
Purpose of data:	Calculation of baseline emissions																	
Additional comment:	All flare specification and operation details/requirements are based on information provided by the equipment manufacturer.																	

Data / Parameter:	EF _{grid,BM,y}
Unit:	tCO ₂ /MWh
Description:	Build margin CO ₂ emission factor in year y
Source of data:	As outlined in the PDD, data is ex-ante determined as per applicable guidance of the "Tool to calculate the emission factor for an electricity system" and value is valid for the whole 2 nd 7-year crediting period. The selected value is the value calculated by the DNA of Brazil and valid for year 2012 (EF _{grid,BM,2012}).
Value(s) applied:	0.2010
Purpose of data:	Calculation of project emissions (due to consumption of grid-sourced electricity by the project activity).
Additional comment:	-

Ex-ante determined parameters not used in the context of ex-post determination and calculation of emission reductions achieved by the project activity:

The following ex-ante determined parameters (that are also included in the PDD) ARE NOT used for the purpose of ex-post determination of baseline emissions and project emissions achieved by the project activity during the considered monitoring period:

- Efficiency of the LFG capture system that will be installed in the project activity (η_{PJ})
- Default value for model correction factor to account for model uncertainties (ϕ_{default})
- Oxidation factor (reflecting the amount of methane from the considered SWDS that is oxidized in the soil (or other material covering the waste)) (OX)
- Fraction of methane in the SWDS gas (volume fraction) (F)
- Fraction of degradable organic carbon (DOC) in MSW that decomposes in the considered SWDS ($\text{DOC}_{f,\text{default}}$)
- Methane correction factor (MCF)
- Fraction of degradable organic carbon in the waste type j (weight fraction) (DOC_j)
- Decay rate for the waste type j (k_j)
- Weight fraction of the waste type j (W_j)

As also outlined in the PDD, data for the above-listed parameters are used only in the context of ex-ante estimation of annual accumulated values for the “Amount of methane in the LFG which is destroyed or utilized by the project activity” ($F_{\text{CH}_4,PJ,y}$) (in the context of ex-ante estimation of emission reductions to be achieved by the project activity during the 2nd 7-year renewable crediting period). Due to that, details for the above-listed parameters are not included in this Section as they are not relevant in the context of determination of emission reductions achieved by the project activity during the considered monitoring period. Relevant details for such not reported parameters are included in Section B.6.2 of the PDD.

D.2. Data and parameters monitored¹¹

Data / Parameter:	Management of SWDS
Unit:	Dimensionless
Description:	Management of the SWDS
Measured/ Calculated / Default:	As per the adopted monitoring procedure for the project activity, the management of the CTR Caieiras landfill is yearly compared against the previously conceived original construction and operational design of the landfill in order to confirm that the overall management and operation for CTR Caieiras landfill (including relevant aspects related to landfilling practice) were not modified with the unique aim to increase generation of methane on site. By performing the checking annually, it is monitored whether no practice aiming to increase methane generation in the landfill has occurred. As required by ACM0001 (version 13.0.0), any change in the management of the landfill after the implementation of the project activity should be justified by referring to technical or regulatory specifications.
Source of data:	<p>A first technical evaluation was performed by the independent 3rd party engineering company “Cepollina Engenheiros Consultores Ltda.” in the end of year 2014 (after slightly less than one year after the occurred renewal of the 7-year renewable crediting period). The findings for the performed evaluations are reported in a declaration document issued by such engineering company that is dated 02/12/2014.</p> <p>As part of the performed technical evaluation, the current configuration and operational conditions of the CTR Caieiras landfill were compared against the previously conceived design and operational conditions of the landfill (that were designed and conceived prior to the implementation of the project activity) on the basis of different sources, including inter alia:</p> <ul style="list-style-type: none"> - Original design documents of the landfill (as detailed in the documentation required for all phases of the previously performed environmental licensing for the CTR Caieiras landfill); - Applicable local or national regulations - Expertise and experience of “Cepollina Engenheiros Consultores Ltda.” <p>Technical team with the design and operation of the CTR Caieiras landfill. Since January 2007 “Cepollina Engenheiros Consultores Ltda.” has performed regular technical inspections and surveillances at the CTR Caieiras landfill as part of the continuously performed assessment of geotechnical stability monitoring for the landfill cells. As established in the environmental and operational licensing requirements for the CTR Caieiras landfill, such regular technical inspections and surveillances are required by the competent environmental authority from São Paulo State (Companhia de Tecnologia de Saneamento Ambiental - CETESB) as part of monitoring activities for ensuring validity of the environmental, health & safety and operational permit/licensing for the CTR Caieiras landfill.</p>

¹¹ As justified in Section A.1, while baseline emissions for the 19-day period from 13/12/2013 to 31/12/2013 are not considered/accounted in the context of determination of emission reductions achieved by the project activity during the considered monitoring period from 13/12/2013 to 12/06/2014, records of monitoring parameters valid for such 19-day period are reported (for sake of completeness and transparency) but ARE NOT considered in the context of determination of emission reductions.

Value(s) of monitored parameter:	<p>As outlined in the issued internal technical evaluation/declaration document dated 02/12/2014, the previously conceived original design of the landfill (dated prior to the implementation of the project activity) is confirmed not to being modified during the period from 01/02/2007 (date when the project activity started to operate) to 02/12/2014. No practice to increase methane generation at the CTR Caieiras landfill has occurred (when compared to management and MSW landfilling practices prior to implementation of the project activity). Aspects, conditions and circumstances related to management of the landfill (e.g. waste disposal, waste covering, waste compacting, management of leachate, draining of rainwater, etc.) were not changed with an aim to increase methane generation on site.</p> <p>MSW management business (collection and disposal of MSW) in Brazil (and in most of the developing countries) has its own economics, dynamics, politics and related regulations. That makes MSW disposal activity for the CTR Caieiras landfill and other similar landfills in Brazil completely independent from the CDM mechanism and/or revenues of commercialization of CERs generated by project based destruction of methane in landfills.</p> <p>In the particular case of the CTR Caieiras landfill, it is important to note that this landfill was designed and it has operated inter alia as per terms and conditions of the public service concession contracts established with the Administration of the Municipality of São Paulo. The design and operation of the landfill is also under conformance with terms and conditions for the environmental licensing that were previously defined and are regularly monitored by the competent environmental authority from São Paulo State (CETESB). While the occurrence of changes in the quantitative condition related to MSW disposal in this landfill (such as the occurred increment in the amount of disposed MSW in the landfill as explained in the PDD) are completely independent from the CDM project activity, the project activity per se does not represent any incentive for promoting a change in the management of the landfill in order to increase the amount of methane generated in the site. The registered CDM project activity does not encompass any MSW management related measures.</p> <p>Currently, there is still no climate change of waste management policy in Brazil which would provide an incentive or a mandate to have MSW being disposed in landfills with better/improved LFG collection / destruction systems (such as the project's LFG collection and destruction system currently implemented at the CTR Caieiras landfill). In this context, it is crucial to note that, regarding the amount of methane that is generated at the CTR Caieiras landfill and collected by the project activity, as outlined in the PDD (under Footnote 63 (Section B.6.1) and Footnote 79 (Section B.6.2)), significant amount of methane generated by the project activity has unfortunately not been collected and destroyed due to the lack of LFG collection infrastructure covering all regions of the very large CTR Caieiras landfill.</p> <p>A second technical evaluation is expected to be performed by the independent 3rd party engineering company "Cepollina Engenheiros Consultores Ltda." (or other competent independent party) in the end of year 2015 in order to meet the valid annual checking monitoring requirement.</p>
Monitoring equipment:	Not applicable. No measuring equipment is used for monitoring management of the CTR Caieiras landfill.
Measuring/ Reading/ Recording frequency:	Annual checking is performed.
Calculation method (if applicable):	Not applicable.
QA/QC procedures:	Procedures related to collection/gathering, recording, storing and reporting of monitoring data for the project activity are performed at Essencis Soluções

	Ambientais S.A. in accordance with detailed working instructions that are included in the company's ISO 9001 and 14001 certified quality management and control (QA/QC) and environmental management system (EMS).
Purpose of data:	Calculation of baseline emissions
Additional comment:	As required by ACM0001 (version 13.0,0), any change in the management of the landfill after the implementation of the project activity will be justified by referring to technical or regulatory specifications and impacts of such changes in the determination of baseline emissions should in this case be taken into account appropriately. Such monitoring requirement will be used for the determination/confirmation of baseline emissions and/or confirmation of the project's implementation as described in the PDD (in terms of operation and management conditions of the landfill from which LFG is combusted).

Data / Parameter:	$V_{t,wb}$
Unit:	m ³ wet gas/h
Description:	Volumetric flow of LFG stream in time interval t on a wet basis
Measured/ Calculated / Default:	Continuously measured by LFG flow meter
Source of data:	Measured as part of the operation of the project activity by applying appropriate monitoring instrument (flow meter) (with recordable electronic signal).
Value(s) of monitored parameter:	The monthly emission reduction calculation spreadsheets (that are enclosed to this Monitoring Report) include measurement data for $v_{CH_4,t,wb}$ that are recorded and reported with an every-minute frequency.

Monitoring equipment:	<p>Measurements are performed by an appropriate LFG flow meter that is installed in a section of the LFG pipeline between the centrifugal blowers and the high temperature enclosed flares.</p> <p><i>Specifications and calibration details for the installed LFG flow meter:</i></p> <ul style="list-style-type: none"> - Manufacturer: <ul style="list-style-type: none"> • The data converter/transmitters is manufactured by SMAR Equipamentos Industriais Ltda. • The annubar element is manufactured by Digimat Montagem e Instrumentação Ltda. - Model: <ul style="list-style-type: none"> • Data converter/transmitter: D1/LD301 • Annubar element: Sonda 6 - Accuracy: <ul style="list-style-type: none"> • Data converter/transmitter: $\pm 0.075\%$ • Annubar element: $\pm 2\%$ (annubar element) - Serial Number: <ul style="list-style-type: none"> • Data converter/transmitter: U468667 • Annubar element: There is no S/N for the installed annubar element. - Instrument internal identification number: FT01 - Calibration frequency (as specified by the monitoring methodology/tool and/or in the PDD): The registered PDD establishes that “<i>Periodic calibration events will be performed in a frequency as per instrument specifications and/or instrument manufacturer’s recommendations</i>”. - Calibration frequency (as per the application of the monitoring plan and recommendations from the equipment manufacturer): <ul style="list-style-type: none"> • Data converter/transmitter: calibration events are to be performed every year • Annubar element: calibration events are to be performed every five years - Dates for performed calibration events valid for the considered monitoring period and entities that performed such calibrations: <ul style="list-style-type: none"> • Data converter/transmitter: Date for performed calibration events valid for the considered monitoring period: 11/03/2013 and 06/03/2014 (Calibration Certificates CR 087/13 and R-0319/14, respectively) Entity/company responsible for the performance of calibration events: Naka Comércio e Indústria de Instrumentação Industrial Ltda. (both calibration events) • Annubar element: A calibration event was performed on 18/05/2011 by Elus Serviços de Instrumentação Ltda. (Certificate of Calibration No. E1194/11). The annubar element was supplied by its manufacturer/distributor already calibrated prior to be installed in the project site.
Measuring/ Reading/ Recording frequency:	Continuous measurements are recorded and reported with an every-minute frequency.
Calculation method (if applicable):	Not applicable.

QA/QC procedures:	<p>Monitoring equipment/instruments are calibrated and maintained as per instrument specifications and/or recommendations of manufacturer.</p> <p>Procedures related to collection/gathering, recording, storing and reporting of monitoring data for the project activity are performed at Essencis Soluções Ambientais S.A. in accordance with detailed working instructions that are included in the company's ISO 9001 and 14001 certified quality management and control (QA/QC) and environmental management system (EMS).</p>
Purpose of data:	Calculation of baseline emissions
Additional comment:	Reported values of $V_{t,wb}$ are used for the determination of the amount of methane in the LFG flared by the project activity ($F_{CH_4,flared,y}$) as per Option C of the applicable methodological "Tool to determine the mass flow of a greenhouse gas in a gaseous stream" (measurements of volume flow in a wet basis).

Data / Parameter:	$V_{CH_4,t,wb}$
Unit:	$m^3 CH_4/m^3$ wet gas
Description:	Volumetric fraction of CH_4 in the collected LFG in time interval t on a wet basis
Measured/ Calculated / Default:	Continuously measured by continuous CH_4 content gas analyzer.
Source of data:	Measured as part of the operation of the project activity by applying appropriate monitoring instruments (CH_4 content gas analyzer) (with recordable electronic signal).
Value(s) of monitored parameter:	The monthly emission reduction calculation spreadsheets (that are enclosed to this Monitoring Report) include measurement data for $V_{CH_4,t,wb}$ that are recorded and reported with an every-minute frequency.

Monitoring equipment:	<p>Measurements are performed by installed continuous CH₄ content gas analyser for which the LFG sample collecting point is located in the main LFG pipeline in a section between the centrifugal blowers and the high temperature enclosed flares.</p> <p><i>Specifications and calibration details for the installed continuous CH₄ content gas analyzer:</i></p> <ul style="list-style-type: none"> - Manufacturer: BGM Instrumentação Controle e Automação Ltda. - Model: CENTRUM AG4000 - Accuracy: ±2.0% - Serial Number: NS 53159 - Instrument internal identification number: GA01 - Calibration frequency (as per the application of the monitoring plan and recommendations from the equipment manufacturer): Calibration events are performed with a maximum interval of 3 months. - Dates for performed calibration events valid for the considered monitoring period: <ul style="list-style-type: none"> - 13/12/2013 - 19/12/2013 - 26/12/2013 - 02/01/2014 - 09/01/2014 - 15/01/2014 - 22/01/2014 - 29/01/2014 - 05/02/2014 - 12/02/2014 - 19/02/2014 - 26/02/2014 - 06/03/2014 - 12/03/2014 - 18/03/2014 - 26/03/2014 - 01/04/2014 - 08/04/2014 - 15/04/2014 - 22/04/2014 - 29/04/2014 - 07/05/2014 - 14/05/2014 - 21/05/2014 - 28/05/2014 - 04/06/2014 - 11/06/2014 - 18/06/2014 - Entity/company responsible for performing the calibration events: all calibration events were performed by trained responsible staff of the project participant Essencis Soluções Ambientais S.A. by following the applicable internal working procedure titled “CA.BG.01.05 – Rev 09 - Calibração analisador de gases” (CA.BG.01.05 – Rev 09 – Calibration of gas analyser). Calibration events valid for the considered monitoring period were performed by using certified span gas cylinders with a known CH₄ composition. Certified span gases utilized for performing the calibration events valid for the considered monitoring period: <ul style="list-style-type: none"> - 2 Gas cylinders with N₂ with a minimum purity of 99,999%: cylinder S/N 395939 and 395749, certificate number IBG04220814 and IBG00760114 supplied by IBG – Indústria Brasileira de Gases Ltda.
-----------------------	---

	<ul style="list-style-type: none"> - Gas cylinders with a calibration mixture of 5,01 cmol/mol of O₂: cylinder n° S/N 3933516, certificate number IBG00590114 supplied by IBG – Indústria Brasileira de Gases Ltda. - Gas cylinders with a calibration mixture of 59,95 cmol/mol of CO₂: cylinder n° S/N 4849733, certificate number IBG04170814 supplied by IBG – Indústria Brasileira de Gases Ltda. - Gas cylinders with a calibration mixture of 59,96 cmol/mol of CH₄: cylinder n° S/N 1118, certificate number IBG00580114 supplied by IBG – Indústria Brasileira de Gases Ltda. - Gas cylinders with a calibration mixture of 60,00 cmol/mol of CO₂: cylinder n° S/N 877597, certificate number IBG00570114 supplied by IBG – Indústria Brasileira de Gases Ltda.
Measuring/ Reading/ Recording frequency:	Continuously measurements are recorded/reported every minute.
Calculation method (if applicable):	Not applicable.
QA/QC procedures:	<p>Monitoring equipment/instruments are calibrated and maintained as per instrument specifications and/or recommendations of manufacturer.</p> <p>Procedures related to collection/gathering, recording, storing and reporting of monitoring data for the project activity are performed at Essencis Soluções Ambientais S.A. in accordance with detailed working instructions that are included in the company's ISO 9001 and 14001 certified quality management and control (QA/QC) and environmental management system (EMS).</p>
Purpose of data:	Calculation of baseline emissions
Additional comment:	-

Data / Parameter:	T_t
Unit:	K
Description:	Temperature of the LFG stream in time interval <i>t</i>
Measured/ Calculated / Default:	Continuously measured by LFG temperature sensor. Measurements are primarily recorded and reported in °C. Recorded/reported data is converted into Kelvin and data is also reported in this unit, thus meeting the related monitoring requirement as per the PDD.
Source of data:	Measured as part of the operation of the project activity by applying appropriate monitoring instruments (temperature sensor) (with recordable electronic signal).
Value(s) of monitored parameter:	The monthly emission reduction calculation spreadsheet (that is enclosed to this Monitoring Report) includes measurement data for T _t that are recorded and reported with an every-minute frequency.

Monitoring equipment:	<p>Measurements are performed by installed LFG temperature sensor that is installed in the main LFG pipeline in a section between the centrifugal blowers and the high temperature enclosed flares.</p> <p><i>Specifications and calibration details for the LFG temperature sensor:</i></p> <ul style="list-style-type: none"> - Manufacturer: Pressgagem Instrumentos de Medição e Controle - Model: STP-100 - Accuracy: $\pm 1.0\%$ - Serial Number (S/N): 45519 - Instrument internal identification number: TT02 - Calibration frequency: as specified by the monitoring methodology/tool): Periodically calibrated by an officially accredited entity. - Calibration frequency (as per the application of the monitoring plan): yearly - Date for performed calibration events valid for the considered monitoring period: 11/03/2013 and 11/03/2014 (Calibration Certificates R-0208/13 and T-202/14, respectively) - Entity/company responsible for the performance of calibration events: Naka Comércio e Indústria de Instrumentação Industrial Ltda. (both calibration events)
Measuring/ Reading/ Recording frequency:	Continuously measurements are recorded/reported every minute.
Calculation method (if applicable):	Not applicable.
QA/QC procedures:	<p>Monitoring equipment/instruments are calibrated and maintained as per instrument specifications and/or recommendations of manufacturer.</p> <p>Procedures related to collection/gathering, recording, storing and reporting of monitoring data for the project activity are performed at Essencis Soluções Ambientais S.A. in accordance with detailed working instructions that are included in the company's ISO 9001 and 14001 certified quality management and control (QA/QC) and environmental management system (EMS).</p>
Purpose of data:	Calculation of baseline emissions
Additional comment:	Measurement records of "Pressure of the gaseous stream in time interval t " (P_t) and Temperature of the gaseous stream in time interval t (T_t) are used to convert measurements of LFG flow to normalized cubic meters (Nm^3).

Data / Parameter:	P_t
Unit:	Pa
Description:	Pressure of the LFG stream in time interval t
Measured/ Calculated / Default:	Continuously measured by LFG pressure sensor. Measurements are primarily recorded and reported in mbar. Recorded/reported data is converted into Pascal and data is also reported in this unit, thus meeting the related monitoring requirement as per the PDD.

Source of data:	Measured as part of the operation of the project activity by applying appropriate monitoring instruments (pressure sensor) (with recordable electronic signal).
Value(s) of monitored parameter:	The monthly emission reduction calculation spreadsheets (that are enclosed to this Monitoring Report) includes measurement data for P_t that are recorded and reported with an every-minute frequency.
Monitoring equipment:	<p>Measurements are performed by installed LFG pressure sensor that is installed in the main LFG pipeline in a section between the centrifugal blowers and the high temperature enclosed flares.</p> <p><i>Specifications and calibration details for the LFG pressure sensor:</i></p> <ul style="list-style-type: none"> - Manufacturer: Pressgagem Instrumentos de Medição e Controle - Model: TPI-PRESS - Accuracy: $\pm 1.5\%$ - Serial Number: 43608 - Instrument internal identification number: PT002 - Calibration frequency (as specified by the monitoring methodology/tool): Periodically calibrated by an officially accredited entity - Calibration frequency (as per the application of the monitoring plan): yearly - Date for performed calibration events valid for the considered monitoring period: 11/03/2013 and 11/03/2014 (Calibration Certificates: CR-089/13 and R-0154/14, respectively) - Entity/company responsible for the performance of calibration events: Naka Comércio e Indústria de Instrumentação Industrial Ltda. (both calibration events)
Measuring/Reading/Recording frequency:	Continuously measurements are recorded/reported every minute.
Calculation method (if applicable):	Not applicable.
QA/QC procedures:	<p>Monitoring equipment/instruments are calibrated and maintained as per instrument specifications and/or recommendations of manufacturer.</p> <p>Procedures related to collection/gathering, recording, storing and reporting of monitoring data for the project activity are performed at Essencis Soluções Ambientais S.A. in accordance with detailed working instructions that are included in the company's ISO 9001 and 14001 certified quality management and control (QA/QC) and environmental management system (EMS).</p>
Purpose of data:	Calculation of baseline emissions
Additional comment:	Measurement records of "Pressure of the gaseous stream in time interval t " (P_t) and Temperature of the gaseous stream in time interval t (T_t) are used to convert measurements of LFG flow to normalized cubic meters (Nm^3).

Data / Parameter:	EC_{PJ,y}																
Unit:	MWh																
Description:	Amount of grid electricity consumed by the project activity during the year y																
Measured/ Calculated / Default:	Continuously measured by electricity meter.																
Source of data:	Monitored values are based on measurements performed by Elektro Eletricidade e Serviços S.A. (local electricity distribution company serving the region where the project activity is located) by applying appropriated monitoring instruments (electricity meters).																
Value(s) of monitored parameter:	<p>Monthly records of grid-sourced electricity consumption valid for the considered monitoring period:</p> <table border="1"> <thead> <tr> <th>Month</th><th>Amount of consumed grid electricity (MWh)</th></tr> </thead> <tbody> <tr> <td>13 Dec. 2013 to 31 Dec. 2013</td><td>144.789</td></tr> <tr> <td>Jan. 2014</td><td>211.327</td></tr> <tr> <td>Feb. 2014</td><td>238.334</td></tr> <tr> <td>Mar. 2014</td><td>193.490</td></tr> <tr> <td>Apr. 2014</td><td>217.463</td></tr> <tr> <td>May. 2014</td><td>202.766</td></tr> <tr> <td>01 Jun. 2014 to 12 Jun 2014</td><td>95.626</td></tr> </tbody> </table>	Month	Amount of consumed grid electricity (MWh)	13 Dec. 2013 to 31 Dec. 2013	144.789	Jan. 2014	211.327	Feb. 2014	238.334	Mar. 2014	193.490	Apr. 2014	217.463	May. 2014	202.766	01 Jun. 2014 to 12 Jun 2014	95.626
Month	Amount of consumed grid electricity (MWh)																
13 Dec. 2013 to 31 Dec. 2013	144.789																
Jan. 2014	211.327																
Feb. 2014	238.334																
Mar. 2014	193.490																
Apr. 2014	217.463																
May. 2014	202.766																
01 Jun. 2014 to 12 Jun 2014	95.626																

Monitoring equipment:	<p>Measurements are performed by installed electricity meters.</p> <p><i>Specifications and calibration details for the installed electricity meters:</i></p> <p>Electricity meter 01 (Blowers 1, 2, 3, 5 and landfill instalations):</p> <ul style="list-style-type: none"> - Manufacturer: KRON Instrumentos Elétricos Ltda. - Model: MULT-K - Accuracy: $\pm 0.2\%$ - Serial Number: 234215 - Instrument internal identification number: ME Plant <p>Electricity meter 02 (Blower 4)</p> <ul style="list-style-type: none"> - Manufacturer: Manufacturer: KRON Instrumentos Elétricos Ltda. - Model: MULT-K - Accuracy: $\pm 0.2\%$ - Serial Number: 465025 - Instrument internal identification number: ME Blower 4 <p>Calibration requirements for Electricity meter 01 and 02:</p> <ul style="list-style-type: none"> - Calibration frequency (as specified by the monitoring methodology/tool): <p>As per the PDD, all monitoring equipment must be calibrated periodically. The "Tool to calculate baseline, project and/or leakage emissions from electricity consumption" establishes the following regarding maintenance and calibration for electricity meters: "(...) <i>meters should be installed, maintained and calibrated according to equipment manufacturer instructions and be in line with national standards, or, if these are not available, international standards (e.g. IEC, ISO)</i>".</p> <ul style="list-style-type: none"> - Calibration frequency (as per the recommendation of the meter manufacturer): it is important to note that the installed meters are approved/certified by INMETRO (The Brazilian national authority for metrology and standardization issues), and they are thus in conformance with INMETRO's requirements for maintenance and testing of electricity meters. According to the instrument manufacturer, the meters are to be calibrated every 5 years. A calibration frequency of 5 years was adopted. - Date of valid calibration events: <ul style="list-style-type: none"> Electricity meter 01: 19/03/2012 (Calibration Certificate: R-0701/12, issued by Naka Comércio e Indústria de Instrumentação Industrial Ltda., respectively) Electricity meter 02: 19/03/2012 (Calibration Certificate: R-0702/12, issued by Naka Comércio e Indústria de Instrumentação Industrial Ltda., respectively)
Measuring/ Reading/ Recording frequency:	Accumulated values for continuous measurements of grid-sourced electricity consumption are recorded once a month.
Calculation method (if applicable):	Not applicable.
QA/QC procedures:	<p>Monitoring equipment/instruments are calibrated and maintained as per instrument specifications and/or recommendations of manufacturer.</p> <p>Procedures related to collection/gathering, recording, storing and reporting of monitoring data for the project activity are performed at Essencis Soluções Ambientais S.A. in accordance with detailed working instructions that are included in the company's ISO 9001 and 14001 certified quality management and control (QA/QC) and environmental management system (EMS).</p>

Purpose of data:	Calculation of project emissions (due to consumption of grid-sourced electricity by the project activity).
Additional comment:	The amount of grid electricity consumed by the project activity consists in the sum of the values measured by both electricity meters.

Data / Parameter:	$EF_{\text{grid,OM},y} = EF_{\text{grid,OM-DD},y}$
Unit:	tCO ₂ /MWh
Description:	Operation margin CO ₂ emission factor in year y = Dispatch data analysis operating margin CO ₂ emission factor in year y
Measured/ Calculated / Default:	Calculated (based on official monthly values as calculated and published by the DNA of Brazil).
Source of data:	Values for year 2013 and year 2014 are selected and applied for the periods from 13/12/2013 to 31/12/2013 and 01/01/2014 to 12/06/2014 respectively. Selected values are the average of monthly official values as calculated and currently made available (published) by the DNA of Brazil for years 2013 and 2014. Monthly official values for years 2013 and 2014 are made available online: 2013: http://www.mct.gov.br/index.php/content/view/346665.html#ancora 2014: http://www.mct.gov.br/index.php/content/view/354731.html#ancora
Value(s) of monitored parameter:	0.5932 tCO ₂ /MWh (year 2013) 0.5837 tCO ₂ /MWh (year 2014)
Monitoring equipment:	Not applicable
Measuring/ Reading/ Recording frequency:	Values are calculated annually.
Calculation method (if applicable):	Values applicable for year 2013 and year 2014 are calculated by the DNA of Brazil as per applicable guidance of the calculation method "dispatch data analysis operating margin CO ₂ emission factor" of the "Tool to calculate the emission factor for an electricity system".
QA/QC procedures:	Procedures related to collection/gathering, recording, storing and reporting of monitoring data for the project activity are performed at Essencis Soluções Ambientais S.A. in accordance with detailed working instructions that are included in the company's ISO 9001 and 14001 certified quality management and control (QA/QC) and environmental management system (EMS).
Purpose of data:	Calculation of project emissions (due to consumption of grid-sourced electricity by the project activity)
Additional comment:	-

Data / Parameter:	$T_{EG,m}$
Unit:	°C
Description:	Temperature in the exhaust gas of the enclosed flare in minute <i>m</i>
Measured/ Calculated / Default:	Continuously measured by thermocouples installed in the upper section of the flares.
Source of data:	Measured as part of the operation of the project activity by applying appropriate monitoring instruments (thermocouples) (with recordable electronic signal).
Value(s) of monitored parameter:	<p>Values for each one of the installed 4 high temperature enclosed flares are reported in the monthly emission reduction calculation spreadsheets (that are enclosed to this Monitoring Report). Measurement data is recorded and reported with an every-minute frequency.</p> <p>While measurements are performed by 4 thermocouples (one thermocouple installed in the upper section of each individual installed flare), the monitoring parameter $T_{EG,m}$ is measured, recorded and reported on the basis of the following sub-parameters:</p> <ul style="list-style-type: none"> - $T_{EG,m,flare-1}$: Temperature in the exhaust gas of Flare 1 - $T_{EG,m,flare-2}$: Temperature in the exhaust gas of Flare 2 - $T_{EG,m,flare-3}$: Temperature in the exhaust gas of Flare 3 - $T_{EG,m,flare-4}$: Temperature in the exhaust gas of Flare 4

Monitoring equipment:	<p><i>Specifications and calibration details for the installed/utilized thermocouples:</i></p> <p><i>Thermocouple used for measuring $T_{EG,m,flare-1}$ (Flare 1):</i></p> <ul style="list-style-type: none"> - Manufacturer: Naka Comércio e Indústria de Instrumentação Industrial Ltda. - Model: NKTC-3000, type N - Accuracy: $\pm 0.75\%$ - Serial Number: 099156 - Instrument internal identification number: TT11 - Calibration frequency (as specified by the monitoring methodology/tool): periodically calibrated by an officially accredited entity - Calibration frequency (as per the application of the monitoring plan): yearly - Calibration Dates: 11/03/2013 (Calibration Certificate: T-0197-13) and 11/03/2014 (Calibration Certificate: T-0198-14) - Entity/company responsible for the performance of calibration events: Naka Comércio e Indústria de Instrumentação Industrial Ltda. <p><i>Thermocouple used for measuring $T_{EG,m,flare-2}$ (Flare 2):</i></p> <ul style="list-style-type: none"> - Manufacturer: Naka Comércio e Indústria de Instrumentação Industrial Ltda. - Model: NKTC-3000, type N - Accuracy: $\pm 0.75\%$ - Serial Number: 099157 - Instrument internal identification number: TT12 - Calibration frequency (as specified by the monitoring methodology/tool): periodically calibrated by an officially accredited entity - Calibration frequency (as per the application of the monitoring plan): yearly - Calibration Dates: 11/03/2013 (Calibration Certificate: T-0198-13) and 11/03/2014 (Calibration Certificate: T-0196-14) - Entity/company responsible for the performance of calibration events: Naka Comércio e Indústria de Instrumentação Industrial Ltda. <p><i>Thermocouple used for measuring $T_{EG,m,flare-3}$ (Flare 3):</i></p> <ul style="list-style-type: none"> - Manufacturer: Naka Comércio e Indústria de Instrumentação Industrial Ltda. - Model: NKTC-3000, type N - Accuracy: $\pm 0.75\%$ - Serial Number: 099158 - Instrument internal identification number: TT13 - Calibration frequency (as specified by the monitoring methodology/tool): periodically calibrated by an officially accredited entity - Calibration frequency (as per the application of the monitoring plan): yearly - Calibration Dates: 11/03/2013 (Calibration Certificate: T-0199-13) and 11/03/2014 (Calibration Certificate: T-0201-14) - Entity/company responsible for the performance of calibration events: Naka Comércio e Indústria de Instrumentação Industrial Ltda. <p><i>Thermocouple used for measuring $T_{EG,m,flare-4}$ (Flare 4):</i></p> <ul style="list-style-type: none"> - Manufacturer: Naka Comércio e Indústria de Instrumentação Industrial Ltda. - Model: NKTC-3000, type N - Accuracy: $\pm 0.75\%$ - Serial Number: 099159 - Instrument internal identification number: TT14 - Calibration frequency (as specified by the monitoring methodology/tool): periodically calibrated by an officially accredited entity - Calibration frequency (as per the application of the monitoring plan): yearly
-----------------------	--

	<ul style="list-style-type: none"> - Calibration Dates: 11/03/2013 (Calibration Certificate: T-0200-13) and 11/03/2014 (Calibration Certificate: T-0200-14) - Entity/company responsible for the performance of calibration events: Naka Comércio e Indústria de Instrumentação Industrial Ltda.
Measuring/ Reading/ Recording frequency:	Continuously measurements are recorded/reported every minute.
Calculation method (if applicable):	-
QA/QC procedures:	<p>Monitoring equipment/instruments are calibrated and maintained as per instrument specifications and/or recommendations of manufacturer.</p> <p>Procedures related to collection/gathering, recording, storing and reporting of monitoring data for the project activity are performed at Essencis Soluções Ambientais S.A. in accordance with detailed working instructions that are included in the company's ISO 9001 and 14001 certified quality management and control (QA/QC) and environmental management system (EMS).</p>
Purpose of data:	Calculation of baseline emissions
Additional comment:	Measurements outside the operational temperature specified/recommended by the manufacturer may indicate that the flare is not functioning correctly and may require maintenance. Unexpected changes such as a sudden increase/drop in temperature can occur for different reasons. As part of the monitoring procedure, these events are noted in the site records along with any corrective action that was implemented to correct the issue. Measurements are required to determine if manufacturer's flare specifications for operating temperature are met.

Data / Parameter:	Flame_m
Unit:	Flame status " <i>on</i> " or flame status " <i>off</i> "
Description:	Flame detection of flare in the minute <i>m</i>
Measured/ Calculated / Default:	Continuously measured by Ultra violet (UV) flame detectors installed in each one of the flares.
Source of data:	Whenever flame is detected in the flare, flame status " <i>on</i> " or "1" value is attributed. Whenever no flame is detected in the flare, flame status " <i>off</i> " or "0" is attributed.

Value(s) of monitored parameter:	<p>Values for each one of the installed 4 high temperature enclosed flares are reported in the monthly emission reduction calculation spreadsheets (that is enclosed to this Monitoring Report). Measurement data is recorded and reported with an every-minute frequency.</p> <p>While measurements are performed by 4 UV flame detectors (one UV flame detector installed in each individual installed flare), the monitoring parameter $Flame_m$ is thus measured, recorded and reported on the basis of the following sub-parameters:</p> <ul style="list-style-type: none"> - $Flame_{m,flare-1}$: Flame detection in Flare 1 - $Flame_{m,flare-2}$: Flame detection in Flare 2 - $Flame_{m,flare-3}$: Flame detection in Flare 3 - $Flame_{m,flare-4}$: Flame detection in Flare 4
Monitoring equipment:	<p><i>Specifications and calibration details for the installed/utilized UV Flame detectors:</i></p> <p><i>UV Flame detector for measuring $Flame_{m,flare-1}$ (Flare 1):</i></p> <ul style="list-style-type: none"> - Manufacturer: SELCON Sistemas Eletrônicos de Controle Ltda. - Model: SEL-SV-UL-K4 - Serial Number: 323730808 - Instrument internal identification number: UV01 - Calibration frequency: No calibration is required as the equipment has a self-checking function incorporated. - Working hours (lifetime): 50,000 h <p><i>UV Flame detector for measuring $Flame_{m,flare-2}$ (Flare 2):</i></p> <ul style="list-style-type: none"> - Manufacturer: SELCON Sistemas Eletrônicos de Controle Ltda. - Model: SEL-SV-UL-K4 - Serial Number: 55600905 - Instrument internal identification number: UV02 - Calibration frequency: No calibration is required as the equipment has a self-checking function incorporated. - Working hours (lifetime): 50,000 h <p><i>UV Flame detector for measuring $Flame_{m,flare-3}$ (Flare 3):</i></p> <ul style="list-style-type: none"> - Manufacturer: Honeywell Analytics Ltd. - Model: C7061 - Serial Number: R7861 - Instrument internal identification number: UV03 - Calibration frequency: No calibration is required as the equipment has a self-checking function incorporated. - Working hours (lifetime): 40,000 h <p><i>UV Flame detector for measuring $Flame_{m,flare-4}$ (Flare 4):</i></p> <ul style="list-style-type: none"> - Manufacturer: SELCON Sistemas Eletrônicos de Controle Ltda. - Model: SEL-SV-210230-K6 - Serial Number: 565400312 - Instrument internal identification number: UV04 - Calibration frequency: No calibration is required as the equipment has a self-checking function incorporated. - Working hours (lifetime): 50,000 h
Calculation method (if applicable):	Not applicable
QA/QC procedures:	<p>Monitoring equipment/instruments are calibrated and/or maintained as per instrument specifications and/or recommendations of manufacturer.</p> <p>Procedures related to collection/gathering, recording, storing and reporting of monitoring data for the project activity are performed at Essencis Soluções Ambientais S.A. in accordance with detailed working instructions that are</p>

	included in the company's ISO 9001 and 14001 certified quality management and control (QA/QC) and environmental management system (EMS).
Purpose of data:	Calculation of baseline emissions
Additional comment:	

Data / Parameter:	Maintenance_y
Unit:	Calendar dates
Description:	Maintenance events completed in year <i>y</i> as monitored by the project participants.
Measured/ Calculated / Default:	-
Source of data:	Maintenance logs
Value(s) of monitored parameter:	<p>The following maintenance events (inspection and maintenance services) were performed in the installed high temperature enclosed flares prior of the starting of the considered monitoring period, during and immediately after the end of the considered monitoring period:</p> <ul style="list-style-type: none"> - 10/01/2014: General inspection/maintenance service on Flare 1 (incl. inspection of the condition of the flare isolation ceramics revetment material, checking of conditions of the LPG supply valve for pilot flame, checking of condition/function of the air inlet dumpers, checking of the conditions of the thermocouples, checking of the condition of the UV flame detector, checking of the condition of the flame arrester valve, checking of the conditions of the LFG injectors, checking of painting conditions). - 05/02/2014: General inspection/maintenance service on Flare 3 (incl. inspection of the condition of the flare isolation ceramics revetment material, checking of conditions of the LPG supply valve for pilot flame, checking of condition/function of the air inlet dumpers, checking of the conditions of the thermocouples, checking of the condition of the UV flame detector, checking of the condition of the flame arrester valve, checking of the conditions of the LFG injectors, checking of painting conditions). - 06/04/2014: General inspection/maintenance service on Flare 4 (incl. inspection of the condition of the flare isolation ceramics revetment material, checking of conditions of the LPG supply valve for pilot flame, checking of condition/function of the air inlet dumpers, checking of the conditions of the thermocouples, checking of the condition of the UV flame detector, checking of the condition of the flame arrester valve, checking of the conditions of the LFG injectors, checking of painting conditions). - 28/04/2014: General inspection/maintenance service on Flare 2 (incl. inspection of the condition of the flare isolation ceramics revetment material, checking of conditions of the LPG supply valve for pilot flame, checking of condition/function of the air inlet dumpers, checking of the conditions of the thermocouples, checking of the condition of the UV flame detector, checking of the condition of the flame arrester valve,

checking of the conditions of the LFG injectors, checking of painting conditions).

- 14/06/2014: General inspection/maintenance service on Flare 1 (incl. inspection of the condition of the flare isolation ceramics revetment material, checking of conditions of the LPG supply valve for pilot flame, checking of condition/function of the air inlet dumpers, checking of the conditions of the thermocouples, checking of the condition of the UV flame detector, checking of the condition of the flame arrester valve, checking of the conditions of the LFG injectors, checking of painting conditions).
- 01/07/2014: General inspection/maintenance service on Flare 3 (incl. inspection of the condition of the flare isolation ceramics revetment material, checking of conditions of the LPG supply valve for pilot flame, checking of condition/function of the air inlet dumpers, checking of the conditions of the thermocouples, checking of the condition of the UV flame detector, checking of the condition of the flame arrester valve, checking of the conditions of the LFG injectors, checking of painting conditions).
- 22/09/2014: General inspection/maintenance service on Flare 4 (incl. inspection of the condition of the flare isolation ceramics revetment material, checking of conditions of the LPG supply valve for pilot flame, checking of condition/function of the air inlet dumpers, checking of the conditions of the thermocouples, checking of the condition of the UV flame detector, checking of the condition of the flame arrester valve, checking of the conditions of the LFG injectors, checking of painting conditions).
- 26/09/2014: General inspection/maintenance service on Flare 2 (incl. inspection of the condition of the flare isolation ceramics revetment material, checking of conditions of the LPG supply valve for pilot flame, checking of condition/function of the air inlet dumpers, checking of the conditions of the thermocouples, checking of the condition of the UV flame detector, checking of the condition of the flame arrester valve, checking of the conditions of the LFG injectors, checking of painting conditions).

As per the applied maintenance practice for the project activity, general inspection/maintenance services on the flares are opportunely performed during planned or unplanned interruptions of operation of the flares.

After the project's commissioning, the isolation ceramics revetment material of the Flare 1 and Flare 2 were replaced once in February 2009 and February 2012 respectively.

For Flares 3 and Flare 4 (which were installed in July 2011 and February 2012 respectively), the isolation ceramics revetment material was not yet replaced. The expected lifetime for the isolation ceramics revetment material for the flares is of at least 10 years (as established in details for the ex-ante determined parameter "Manufacturer's flare specifications for temperature, flow rate and maintenance schedule interval" ($SPEC_{flare}$)).

Performed maintenance and overhauling services in the flare are regularly performed under conformance with maintenance requirements for the flares (as established by equipment manufacturer) and required by the ex-ante determined parameter $SPEC_{flare}$. Further details about the parameter $SPEC_{flare}$ are included in Section D.1.

Monitoring equipment:	Not applicable.
Measuring/ Reading/ Recording frequency:	Not applicable.
Calculation method (if applicable):	Not applicable.
QA/QC procedures:	The maintenance event logs and documentation for the whole project activity are recorded as per requirement of the company's ISO 9001 and ISO 14001 certified quality and control (QA/QC) and environmental management (EMS) system that is implemented for activities undertaken at the CTR Caieiras landfill.
Purpose of data:	Calculation of baseline emissions
Additional comment:	<p>Monitoring of this parameter is required for the case of enclosed flares and the project participant selects Option B to determine flare efficiency.</p> <p>These dates are required so that they can be compared to the maintenance schedule to check that maintenance events were completed within the minimum time between maintenance events specified by the manufacturer ($SPEC_{flare}$).</p>

Data / Parameter:	$FC_{LPG,y}$
Unit:	ton
Description:	Quantity of LPG consumed by the project activity in year y
Measured/ Calculated / Default:	Measured.
Source of data:	Monitored values of $FC_{LPG,y}$ are based on measurements performed by the local LPG distribution company Cia Ultragas S.A. as part of LPG delivery events.
Value(s) of monitored parameter:	<p>As per the adopted monitoring procedure, the total amount of LPG consumed by the project activity during the considered monitoring period is 225 kg (0.225 ton) of LPG. Thus,</p> $FC_{LPG,y} = 0.225 \text{ ton}_{LPG}$ <p>LPG was consumed for lighting/igniting the flares (flare pilot). The reported value corresponds to all the LPG acquired during, or before the considered monitoring period (in the present case 5 cylinders of 45 kg of LPG were acquired by the project participant on 13/11/2013), conservatively assuming that all the LPG was used during the monitoring period.</p>

Monitoring equipment:	<p><i>Monitoring details for “Amount of consumed LPG” ($FC_{LPG,y}$):</i> LPG consumption was monitored based on measurements performed by the local LPG distribution company Cia Ultragaz S.A. using the weight scale of which specifications are provided below. The adopted weighing procedure is as per working procedure IT-CO.61.0008 of the ISO9001 certified QA/QC management system of Cia Ultragaz S.A.</p> <p><i>Specifications and calibration details for the installed weight scale for measurements of $FC_{LPG,y}$:</i></p> <ul style="list-style-type: none"> - Manufacturer: Mettler-Toledo Inc. - Model: 2180 - Capacity: max. 250 kg - Accuracy: $\pm 50g$ - Serial Number: 10423008 - Calibration frequency (as specified by the monitoring methodology/tool): The monitoring plan of the PDD and ACM0001 (version 13.0.0) do not specify any calibration frequency requirements for the weight scales. As per the PDD, all equipment must be calibrated periodically. As per the “Tool to calculate project or leakage CO₂ emissions from fossil fuel combustion”, meters should be installed, maintained and calibrated according to equipment manufacturer instructions and be in line with national standards, or, if these are not available, international standards (e.g. IEC, ISO). - Date of valid calibration: 14/06/2012 (Calibration Certificate MA124/2012). - Entity/company responsible for the performed calibration events: and Instituto de Pesos e Medidas do Estado de São Paulo IPEM-SP (calibration event of 14/06/2012).
Measuring/ Reading/ Recording frequency:	Amount of LPG is measured upon the supply of cylinders of LPG with 45 kg capacity each.
Calculation method (if applicable):	-
QA/QC procedures:	<p>The amount of consumed LPG is cross-checked with internal records of cost expenditures for fuel LPG as per the internal financial/accounting management system of Essencis Soluções Ambientais S.A.</p> <p>Monitoring equipment/instruments are calibrated and maintained as per instrument specifications and/or recommendations of manufacturer.</p> <p>Procedures related to collection/gathering, recording, storing and reporting of monitoring data for the project activity are performed at Essencis Soluções Ambientais S.A. in accordance with detailed working instructions that are included in the company’s ISO 9001 and 14001 certified quality management and control (QA/QC) and environmental management system (EMS).</p>
Purpose of data:	Calculation of project emissions (due to consumption of LPG by the project activity)
Additional comment:	-

Data / Parameter:	NCV_{LPG,y}
Unit:	GJ/ton LPG
Description:	Net calorific value of the fuel LPG
Measured/ Calculated / Default:	Default value is selected.
Source of data:	<p>National default value as per the publication Brazilian National Energetic Balance Report for year 2014 (Balanço Energético Nacional (BEN) – 2014) / Table VIII.9 – Specific Mass and Heating Values (Higher Heating Value). While this annual report is the latest issued version and it is based on data valid for year 2013, selected value is thus applicable for both the share of the considered monitoring period encompassing year 2013 (period from 13/12/2013 to 31/12/2013) and the share encompassing year 2014 (period from 01/01/2014 to 12/06/2014). This official document was published by the public entity Empresas de Pesquisas Energéticas (EPE). While create and established in accordance with the Federal Law 10.847 of 15/03/2004, the EPE is a governmental entity that undertakes energy planning related investigation and research services. The BEN-2014 report is available online: https://ben.epe.gov.br/downloads/Relatorio_Final_BEN_2014.pdf</p> <p>Reported value in kcal/kg is converted into GJ/ton.</p>
Value(s) of monitored parameter:	46.5
Monitoring equipment:	Not applicable.
Measuring/ Reading/ Recording frequency:	In accordance with the PDD, as national default value is considered, an every year monitoring frequency is thus applied.
Calculation method (if applicable):	Not applicable.
QA/QC procedures:	Procedures related to collection/gathering, recording, storing and reporting of monitoring data for the project activity are performed at Essencis Soluções Ambientais S.A. in accordance with detailed working instructions that are included in the company's ISO 9001 and 14001 certified quality management and control (QA/QC) and environmental management system (EMS).
Purpose of data:	Calculation of project emissions (due to consumption of LPG by the project activity)
Additional comment:	-

Data / Parameter:	EF _{CO₂,LPG,y}
Unit:	tCO ₂ /GJ LPG
Description:	CO ₂ emission factor of fuel LPG in year <i>y</i>
Measured/ Calculated / Default:	Default value is selected.
Source of data:	Value is selected as per 2006 IPCC Guidelines on National GHG Inventories (applicable value at upper limit of uncertainty at 95% confidence interval as provided in Table 1.4 of Chapter 1 of Vol. 2 (Energy)).
Value(s) of monitored parameter:	0.0656
Monitoring equipment:	Not applicable.
Measuring/ Reading/ Recording frequency:	In accordance with the PDD, as IPCC default value is considered, an every year monitoring frequency is thus applied.
Calculation method (if applicable):	Not applicable.
QA/QC procedures:	Procedures related to collection/gathering, recording, storing and reporting of monitoring data for the project activity are performed at Essencis Soluções Ambientais S.A. in accordance with detailed working instructions that are included in the company's ISO 9001 and 14001 certified quality management and control (QA/QC) and environmental management system (EMS).
Purpose of data:	Calculation of project emissions (due to consumption of LPG by the project activity)
Additional comment:	-

The following monitoring parameters (which are also included in the monitoring plan of the registered PDD) were not monitored during the considered monitoring period and/or were not considered in the context of the determination of achieved emission reductions for the considered monitoring period since the methodological options for which they are applicable were not selected/applied as monitoring or calculation approaches for the determination of baseline emissions achieved by the project activity during the considered monitoring period:

- Volumetric flow of LFG stream in time interval *t* on a dry basis ($V_{t,db}$)
- Volumetric fraction of CH₄ in the collected LFG in time interval *t* on a dry basis ($v_{CH_4,t,db}$)
- Mass flow of the LFG stream in time interval *t* on dry basis ($M_{t,db}$)
- Saturation pressure of H₂O at temperature T_t in time interval *t* ($p_{H_2O,t,Sat}$)
- Mass flow of methane in the exhaust gas of the flare on a dry basis at reference conditions in the time period *t* ($F_{CH_4,EG,t}$)

D.3. Implementation of sampling plan

>>

Not applicable.

SECTION E. Calculation of emission reductions or GHG removals by sinks

E.1. Calculation of baseline emissions or baseline net GHG removals by sinks

>>

Baseline emissions (BE_y) for the considered monitoring period (with the period from 13/12/2013 to 31/12/2013 not being considered¹²) are determined (in tCO₂e) as follows:

$$BE_y = BE_{CH_4,y}$$

Where:

$BE_{CH_4,y}$ Baseline emissions of methane from the SWDS¹³. As established by ACM0001 (version 13.0.0), the determination of $BE_{CH_4,y}$ is based on the amount of methane that is actually captured and combusted (destroyed) by the project activity and also by taking into account the amount of methane that, in the absence of the project activity (baseline scenario), would be otherwise captured and destroyed in the landfill by the pre-project conventional and passive LFG destruction system. In addition, the effect of methane oxidation (that as per ACM0001 (version 13.0.0) is assumed as existing under the baseline and not under the project scenario) is also taken into account. $BE_{CH_4,y}$ is thus determined as follows:

$$BE_{CH_4,y} = (1 - OX_{top_layer}) * (F_{CH_4,PJ,y} - F_{CH_4,BL,y}) * GWP_{CH_4}$$

Where:

OX_{top_layer} Fraction of methane in the LFG that would be oxidized in the top layer of the SWDS in the baseline scenario. OX_{top_layer} is ex-ante determined as 10%. Further details about the selection of the value for ex-ante determined parameter OX_{top_layer} is included in Section D.1 and in the PDD.

$GWP_{CH_4,y}$ Global warming potential of CH₄. GWP_{CH_4} is ex-ante determined as 25. Further details about the selection of the value for the ex-ante determined parameter GWP_{CH_4} is included in Section D.1 and in the PDD.

$F_{CH_4,BL,y}$ Amount of methane in the LFG that would be flared in the baseline scenario (absence of project activity). As outlined in Section B.6.1 of the PDD, $F_{CH_4,BL,y}$ is calculated as follows:

$$F_{CH_4,BL,y} = 0.2 * F_{CH_4,PJ,capt,y}$$

Where:

$F_{CH_4,PJ,capt,y}$ Amount of methane collected by the project activity. In the particular case of the project activity, $F_{CH_4,PJ,capt,y}$ is determined as follows:

$$F_{CH_4,PJ,capt,y} = F_{CH_4,sent,flare,y}$$

¹² As justified in Section A.1, while baseline emissions for the 19-day period from 13/12/2013 to 31/12/2013 are not considered in the context of determination of emission reductions achieved by the project activity during the considered whole monitoring period from 13/12/2013 to 12/06/2014, records of monitoring parameters valid for such 19-day period are reported (for sake of completeness and transparency) but ARE NOT considered in the context of determination of emission reductions.

¹³ SWDS = Solid Waste Disposal Site. For the case of the project activity, the SWDS is the CTR Caieiras landfill.

Where:

$F_{CH_4, sent, flare, y}$ Amount of methane in the LFG which is sent to the flares. Details for the determination of every-minute values for $F_{CH_4, sent, flare, y}$ are presented below (under “*Determination of every-minute values for the calculation parameter $F_{CH_4, sent, flare, y}$* ”).

For the considered monitoring period, the accumulated value for $F_{CH_4, BL, y}$ (with values of $F_{CH_4, BL, y}$ valid for the period from 13/12/2013 to 31/12/2013 not being considered/accounted) is calculated as 3,140 tCH₄.

$F_{CH_4, PJ, y}$ Amount of methane in the LFG which is flared and/or used in the project activity.

In the particular case of the project activity, $F_{CH_4, PJ, y}$ is determined as follows:

$$F_{CH_4, PJ, y} = F_{CH_4, flared, y}$$

$F_{CH_4, flared, y}$ Amount of methane in the LFG flared by the project activity (in tCH₄). In accordance with calculation guidance included in the PDD and by following applicable guidance of the “Tool to determine the mass flow of a greenhouse gas in a gaseous stream”, every-minute values for $F_{CH_4, flared, y}$ are determined as the difference between the amount of methane supplied to the flares and residual methane emissions from combustion of LFG in the flares, as follows:

$$F_{CH_4, flared, y} = F_{CH_4, sent, flare, y} - (PE_{flare, y} / GWP_{CH_4})$$

Where:

$F_{CH_4, sent, flare, y}$ Amount of methane in the LFG which is sent to the flares. Details for the determination of every-minute values for $F_{CH_4, sent, flare, y}$ are presented below (under “*Determination of every-minute values for the calculation parameter $F_{CH_4, sent, flare, y}$* ”).

$PE_{flare, y}$ Project emissions from flaring of the residual gas stream. Details for the determination of every-minute values for $PE_{flare, y}$ are presented below (under “*Determination of $PE_{flare, y}$* ”).

Determination of every-minute values for the calculation parameter $F_{CH4,sent_flare,y}$:

For the considered monitoring period, Option C of the “Tool to determine the mass flow of a greenhouse gas in a gaseous stream” (where the gaseous stream the tool shall be applied to is the stream of collected LFG that is sent to the flares)¹⁴ is the selected approach for determination of every minute values for $F_{CH4,sent_flare,y}$. By following calculation option C (that is one of the applicable calculation methods the PDD refers to), the mass flow of greenhouse gas i ($F_{i,t}$) ($i = CH_4$) that is sent to the flares is determined as follows:

$$F_{CH4,sent_flare,y} = F_{CH4,t} = V_{t,wb,n} * v_{CH4,t,wb} * \rho_{CH4,n}$$

Where:

$V_{t,wb,n}$ Volumetric flow of the gaseous stream (LFG) in time interval t on a wet basis at normal conditions. For the considered monitoring period, every-minute values of the calculation parameter $V_{t,wb,n}$ (in Nm³ wet gas/h) are calculated and reported in the monthly emission reduction calculation spreadsheets valid for the considered monitoring period (and enclosed to this Monitoring Report).

While in the particular case of the project activity, during the considered monitoring period, volumetric flow of the gaseous stream (LFG) is measured at actual pressure and temperature conditions, values for $V_{t,wb,n}$ (in standard pressure and temperature conditions) are thus determined/calculated as a function of records of the monitoring parameter “Volumetric flow of the gaseous stream (LFG) in time interval t on a wet basis” ($V_{t,wb}$) by also taking into account every-minute records for the monitoring parameters LFG temperature (T_t) and LFG pressure (P_t) as follows:

$$V_{t,wb,n} = V_{t,wb} * (T_n / T_t) * (P_t / P_n)$$

Where:

$V_{t,wb}$ Volumetric flow of the gaseous stream (LFG) in time interval t on a wet basis. For the considered monitoring period, every-minute data measurements of the monitoring parameter $V_{t,wb}$ (in m³ wet gas/h) are reported in the monthly emission reduction calculation spreadsheets valid for the considered monitoring period (which are enclosed to this Monitoring Report). Further monitoring details for the monitoring parameter $V_{t,wb}$ are included in Section D.2.

P_t Pressure of the gaseous stream in time interval t . As per the applied monitoring procedure, every-minute data measurements of the monitoring parameter P_t (in mbar converted into Pa) are reported in the monthly emission reduction calculation spreadsheets valid for the considered monitoring period (which are enclosed to this Monitoring Report). For each minute m of the monitoring period where records of P_t are not available ($P_t = 0$), $V_{t,wb,n}$ is assumed as zero. Further monitoring details for the monitoring parameter P_t are included in Section D.2.

T_t Temperature of the gaseous stream in time interval t . As per the applied monitoring procedure, every-minute data measurements of the monitoring parameter T_t (in °C converted into Kelvin) are reported in the monthly emission reduction calculation spreadsheets valid for the considered monitoring period

¹⁴ It is relevant to note that the PDD states the following regarding the calculation approach for values of $F_{CH4,sent_flare,y}$:

“(…) Applicable guidance of the “Tool to determine the mass flow of a greenhouse gas in a gaseous stream” will be applied to determine $F_{CH4,sent_flare,y}$ by using Option 2: Simplified calculation without measurement of the moisture content, and one of the options A, C or D. The selection of the determination option will depend on project conditions and equipment to be installed. (…)”

(which are enclosed to this Monitoring Report). For each minute m of the monitoring period where records of T_t are not available ($T_t = 0$), $V_{t,wb,n}$ is assumed as zero. Further monitoring details about the monitoring parameter T_t are included in Section D.2.

- T_n Temperature at normal conditions. T_n is ex-ante determined as 273.15 Kelvin. Further details about the ex-ante determined parameter T_n are included in Section D.1 and in the PDD.
- P_n Total pressure at normal conditions. P_n is ex-ante determined as 101,325 Pa. Further details about the ex-ante determined parameter P_n are included in Section D.1 and in the PDD.

$V_{CH_4,t,wb}$ Volumetric fraction of CH_4 in the gaseous stream in time interval t on a wet basis. As per the applied monitoring procedure, every-minute values of the monitoring parameter $V_{CH_4,t,wb}$ (in m^3 of CH_4 / m^3 of wet LFG) are reported in the monthly emission reduction calculation spreadsheet valid for the considered monitoring period (and enclosed to this Monitoring Report). Further monitoring details about the monitoring parameter $V_{CH_4,t,wb}$ are included in Section D.2.

$\rho_{CH_4,n}$ Density of CH_4 in the gaseous stream (LFG) at normal conditions. For the considered monitoring period, value of $\rho_{CH_4,n}$ (in kg of CH_4 / m^3 of CH_4) is calculated and reported in the monthly emission reduction calculation spreadsheet valid for the considered monitoring period (and enclosed to this Monitoring Report) as follows:

$$\rho_{i,n} = (P_n * MM_i) / (R_u * T_n)$$

Where:

- P_n Absolute pressure at normal conditions. P_n is ex-ante determined as 101,325 Pa. Further details about the ex-ante determined parameter P_n are included in Section D.1 and in the PDD.
- T_n Temperature at normal conditions. T_n is ex-ante determined as 273.15 Kelvin. Further details about the ex-ante determined parameter T_n are included in Section D.1 and in the PDD.
- MM_i Molecular mass of greenhouse gas i ($i = CH_4$). MM_i ($i = CH_4$) is ex-ante determined as 16.04 kg/mol. Further details about the ex-ante determined parameter MM_i ($i = CH_4$) are presented in Section D.1 and in the PDD.
- R_u Universal ideal gases constant. R_u is ex-ante determined as 8,314 Pa.m³/kmol.K. Further details about the ex-ante determined parameter R_u are presented in Section D.1 and in the PDD.

$\rho_{CH_4,n}$ is calculated as 0.7156650 kg CH_4 /m³ CH_4 as reported in the monthly emission reduction calculation spreadsheets valid for the considered monitoring period.

While the calculated every-minute values $F_{i,t}$ (as defined by Option C of the “Tool to determine the mass flow of a greenhouse gas in a gaseous stream”) are equivalent to every-minute values for $F_{CH_4,sent_flare,y}$ (as defined by ACM0001 (version 13.0.0)), the monthly emission reduction calculation spreadsheets valid for the considered monitoring period include the determination of every minute values of $F_{CH_4,sent_flare,y}$ applicable for the set of installed high temperature enclosed flares (for which collected LFG is equally sent for combustion under controlled conditions). As further outlined in Section B.1, during the considered monitoring period there were limited time periods (with less than

30 minutes each period) for which the project activity was under operation (LFG being collected and destroyed) and for which unexpected and intermittent electrical and/or data communication problems/failures occurred (problems/failures related to the PLC panel and/or signal from the LFG pressure sensor, LFG temperature sensor and/or two of the installed thermocouples). For these particular time periods, values for the calculated parameter $V_{t,wb,n}$ for every-minute m encompassed by the periods are assumed as null (zero). That results in no destruction of methane being considered/accounted for such minutes in the context of the determination of baseline emissions for the whole considered monitoring period.

Determination of $PE_{flare,y}$:

$PE_{flare,y}$ is determined by following applicable stepwise guidance of the methodological tool “Project emissions from flaring” (version 02.0.0). Every minute values for $PE_{flare,y}$ are determined as a function of every-minute records of mass flow of methane sent to the set of operating flares ($F_{CH4,RG,m}$)¹⁵ as well as based on the assumed default values for flare efficiency ($\eta_{flare,m}$) that is applicable for each one of installed flares as follows:

$$PE_{flare,y} = GWP_{CH4} * \sum_{m=1}^{525,600} F_{CH4,RG,m} * (1 - \eta_{flare,m}) * 10^{-3}$$

Where:

$F_{CH4,RG,m}$ Methane mass flow in the residual gas. For each minute m of the considered monitoring period, values for $F_{CH4,RG,m}$ valid for the set of installed flares are equal to every-minute reported measurement records of the calculation sub-parameter “Amount of methane in the LFG which is sent to the flares” ($F_{CH4,sent_flare,y}$).

$\eta_{flare,m}$ Flare efficiency in minute m . For the considered monitoring period, the application of the default 90% value is selected for the determination of $\eta_{flare,m}$ for each individual minute m by following applicable guidance as per Option A (Default value) of the methodological tool “Project emissions from flaring” (version 02.0.0), from which the following related guidance of the PDD is effectively applied:

“(…)

Option A: Default value:

For each one of the high temperature enclosed flares installed as part of the project activity, the flare efficiency for each minute m ($\eta_{flare,m}$) is 90% when the following two operational conditions/requirements are simultaneously met (in order to demonstrate that the flare is operating as per the recommendations and requirements set by the equipment manufacturer for the minute m in question):

- (1) The temperature of the exhaust gases of the flare (monitoring parameter $T_{EG,m}$) and the flow rate of LFG to the flare (monitoring parameter $F_{RG,m}$) is within the manufacturer's specification/requirements for the flare (monitoring parameter $SPEC_{flare}$) in minute m ;*
- (2) Flame is detected in the flare in minute m (monitoring parameter $Flame_m$).*

“(…)”

The monthly emission reduction spreadsheets (that are enclosed to this Monitoring Report) include every-minute records for both the monitoring parameters $T_{EG,m}$ and $F_{RG,m}$ as per the methodological tool “Project emissions from flaring” (version 02.0.0)

¹⁵ As per ACM0001 (version 13.0.0), flare efficiency represents the combustion efficiency of LFG in the flare in terms of CH_4 by considering *inter alia* the time that the flare in question is operating. As outlined in the PDD, the combustion efficiency for the enclosed flares may be determined by either applying a default efficiency value or by determining the flare efficiency based on monitored data (as per applicable measurements and calculations).

valid for the considered monitoring period (where $F_{RG,m}$ is equivalent to $V_{t,wb,n}$ in the particular case of the project activity). As per the applied monitoring procedure, compliance with operational and maintenance requirements for the flares, as established by the *ex-ante* determined parameter “Manufacturer’s flare specifications for temperature, flow rate and maintenance schedule interval.” ($SPEC_{flare}$), is also considered for the selection of the conservative default value for $\eta_{flare,m}$ as also outlined in the monthly emission reduction spreadsheets. Data records for the monitoring parameter “Flame detection of flare in the minute m ” ($Flame_m$) are also considered when assuming every-minute value for $\eta_{flare,m}$ as equal to 90% or equal to 0% in the context of the calculation of every minute values of $PE_{flare,y}$ for the considered monitoring period. For each installed flare, the time the flare has operated is determined by monitoring the flame combustion status/condition by using an UV flame detector (of which status signal (flame status “on” or “off”) is continuously recorded and reported). Moreover, the monitoring requirements related to operational requirements/conditions for the flares (as provided by the manufacturer’s specifications for operating conditions as per the *ex-ante* determined parameter $SPEC_{flare}$ (min. and max. flow of LFG to the flares + temperature of exhaust gas of the flare + meeting of maintenance requirements)) are also considered in the context of the application of determined values for $\eta_{flare,m}$ along the considered monitoring period. As outlined in the monthly emission reduction spreadsheets, for each minute m within the considered monitoring period whenever it is detected that operating flares have combusted LFG by not operating in accordance with the operational criteria as established by the *ex-ante* estimated parameter $SPEC_{flare}$ (in terms of LFG flow, temperature of exhaust gas or maintenance practice), no destruction of methane is accounted for the flares as part of the calculation values of $F_{CH4,PJ,y} = F_{CH4,flared,y}$ achieved by the project activity.

For the considered monitoring period, the accumulated value for $F_{CH4,PJ,y} = F_{CH4,flared,y}$ (with values of $F_{CH4,PJ,y} = F_{CH4,flared,y}$ valid for the period from 13/12/2013 to 31/12/2013 not being considered/accounted) is calculated as 13,528 tCH₄.

For the considered monitoring period, baseline emissions of methane from the SWDS ($BE_y = BE_{CH4,y}$) (with values for the period from 13/12/2013 to 31/12/2013 not being considered/accounted) are calculated as 233,730 tCO_{2e}.

The summarized emission reduction calculation spreadsheets (that are enclosed to this Monitoring Report) summarizes the determination of $BE_y = BE_{CH4,y}$ for the considered monitoring period (with values for the period from 13/12/2013 to 31/12/2013 not being considered/accounted).

E.2. Calculation of project emissions or actual net GHG removals by sinks

>>

As outlined in the PDD, the operation of the project activity requires consumption of both grid-sourced electricity and Liquefied Petroleum Gas (LPG). As also established in the PDD, project emissions due to consumption of these energy carriers are determined by following the applicable guidance of the “Tool to calculate baseline, project and/or leakage emissions from electricity consumption” (Version 01) and “Tool to calculate project or leakage CO₂ emissions from fossil fuel combustion” (Version 02) respectively.

Project emissions (PE_y) for the whole considered monitoring period (including the period from 13/12/2013 to 31/12/2013) are determined (in tCO_{2e}) as follows:

$$PE_y = PE_{EC,grid,y} + PE_{LPG,y}$$

Where:

$PE_{EC,grid,y}$ Project emissions due to the consumption of grid-sourced electricity by the project activity
 $PE_{LPG,y}$ Project emissions due to the consumption of LPG by the project activity

Project emissions due to the consumption of grid-sourced electricity by the project activity:

Project emissions due to the consumption of grid-sourced electricity by the project activity ($PE_{EC,grid,y}$) are calculated as per applicable guidance of the “Tool to calculate baseline, project and/or leakage emissions from electricity consumption” (version 01) as follows:

$$PE_{EC,grid,y} = EC_{PJ,grid,y} * EF_{EL,grid} * (1 + TDL_{grid,y})$$

Where:

$TDL_{grid,y}$ Average technical transmission and distribution losses for grid sourced electricity consumed by the project activity in year y . $TDL_{grid,y}$ is ex-ante selected as 20%. Further details about the ex-ante determined parameter $TDL_{grid,y}$ are included in Section D.1 and in the PDD.

$EC_{PJ,grid,y}$ Quantity of grid sourced electricity consumed by the project activity in year y . As per the applied monitoring procedure, monthly records of grid-sourced electricity consumption valid for the considered monitoring period are summarized below:

Month	Amount of consumed grid electricity (MWh)
13 Dec. 2013 to 31 Dec. 2013	144.789
Jan. 2014	211.327
Feb. 2014	238.334
Mar. 2014	193.490
Apr. 2014	217.463
May. 2014	202.766
01 Jun 2014 to 12 Jun 2014	95.626

Additional monitoring details about the monitoring parameter $EC_{PJ,grid,y}$ are included in Section D.2.

$EF_{EL,grid}$ Emission factor for grid sourced electricity in year y . $EF_{EL,grid}$ is determined as the combined margin emission factor ($EF_{grid,CM,y}$) that is calculated as the weighted average of the operating margin and build margin emission factors for year 2013 (period from 13/12/2013 to 31/12/2013) and year 2014 (period from 01/01/2014 to 12/06/2014). To weight these two factors, the default values applicable to both for the 2nd crediting period are applied. The combined margin emission factor is thus obtained as follows:

$$EF_{\text{grid,CM},y} = w_{\text{OM}} * EF_{\text{grid,OM},y} + w_{\text{BM}} * EF_{\text{grid,BM},y}$$

Where:

w_{OM}	Weighting of operating margin emissions factor. w_{OM} is ex-ante selected as 0.25%. Further details about the ex-ante selected parameter w_{OM} are included in Section D.1 and in the PDD.
w_{BM}	Weighting of operating margin emissions factor. w_{BM} is ex-ante selected as 0.75%. Further details about the ex-ante selected parameter w_{BM} are included in Section D.1 and in the PDD.
$EF_{\text{grid,OM}}$	Operating margin CO ₂ emission factor in year y . As per the applied monitoring procedure, the selected value for the monitoring parameter $EF_{\text{grid,OM}} = EF_{\text{grid,OM-DD},y}$ are 0.5932 tCO ₂ /MWh (year 2013) and 0.5837 tCO ₂ /MWh (year 2014). Selected values represent to the official average value for year (vintage) 2013 and 2014 respectively as calculated and made public available by the DNA of Brazil. Further details about the monitoring parameter $EF_{\text{grid,OM}}$ are included in Section D.2.
$EF_{\text{grid,BM}}$	Build margin CO ₂ emission factor in year y . $EF_{\text{grid,BM}}$ is ex-ante determined as 0.2010 tCO ₂ /MWh. Further details about the ex-ante determined parameter $EF_{\text{grid,BM}}$ are included in Section D.1 and in the PDD.

$EF_{\text{EL,grid}}$ is thus calculated as follows:

$$2013: EF_{\text{EL,grid},2013} = (0.25 * 0.5932) + (0.75 * 0.2010) = 0.2991 \text{ tCO}_2/\text{MWh}$$

$$2014: EF_{\text{EL,grid},2014} = (0.25 * 0.5837) + (0.75 * 0.2010) = 0.2967 \text{ tCO}_2/\text{MWh}$$

For the considered monitoring period, project emissions due to the consumption of grid-sourced electricity by the project activity ($PE_{\text{EC,grid},y}$) are calculated as follows:

$$PE_{\text{EC},y} = PE_{\text{EC},2013} + PE_{\text{EC},2014} = (144.789 \text{ MWh} * 0.2991 \text{ tCO}_2/\text{MWh} * (1 + 0.2)) + (1,159.007 * 0.2967 \text{ tCO}_2/\text{MWh} * (1 + 0.2)) = 465 \text{ tCO}_2 \text{ (rounded value).}$$

The summarized emission reduction calculation spreadsheet (that is enclosed to this Monitoring Report) includes all calculations related to the determination of $PE_{\text{EC,grid},y}$ for the considered monitoring period.

Project emissions due to consumption of LPG by the project activity:

Project emissions due to the consumption of LPG by the project activity ($PE_{\text{LPG},y}$) are calculated as per applicable guidance of the “Tool to calculate project or leakage CO₂ emissions from fossil fuel combustion” (version 02) as follows:

$$PE_{\text{LPG},y} = FC_{\text{LPG},y} * COEF_{\text{LPG},y}$$

Where:

$FC_{\text{LPG},y}$	Quantity of LPG consumed by the project activity in year y . As per the adopted monitoring procedure, during the considered monitoring $FC_{\text{LPG},y}$ is determined as 225 kg (0.225ton) of LPG. Additional monitoring details for the monitoring parameter $FC_{\text{LPG},y}$ are included in Section D.2.
---------------------	---

$COEF_{LPG,y}$ CO_2 emission coefficient for LPG. As established in the PDD valid for the 2nd 7-year crediting period of the project activity, $COEF_{LPG,y}$ is determined by following applicable guidance as per Option B of the “Tool to calculate project or leakage CO_2 emissions from fossil fuel combustion” as follows:

$$COEF_{LPG,y} = NCV_{LPG,y} * EF_{CO_2,LPG,y}$$

Where:

$EF_{CO_2,LPG,y}$ CO_2 emission factor of fuel LPG (in energy basis). As per the applied monitoring procedure, $EF_{CO_2,LPG,y}$ is determined as 0.0656 t CO_2 /GJ. Further details about the monitoring parameter $EF_{CO_2,LPG,y}$ are included in Section D.2.

$NCV_{LPG,y}$ Net calorific value of the fuel LPG. As per the applied monitoring procedure, $NCV_{LPG,y}$ is determined as 46.5 GJ/ton for both the share of the considered monitoring period encompassing year 2013 (period from 13/12/2013 to 31/12/2013) and share encompassing year 2014 (period from 01/01/2014 to 12/06/2014). Further details about the monitoring parameter $NCV_{LPG,y}$ are included in Section D.2

$$\text{Thus, } COEF_{LPG,y} = 0.0656 \text{ tCO}_2/\text{GJ} * 46.5 \text{ GJ/ton} = 3.05 \text{ tCO}_2/\text{ton}$$

In summary, $PE_{LPG,y}$ is calculated as follows:

$$PE_{LPG,y} = 0.225 \text{ ton LPG} * 3.05 \text{ tCO}_2/\text{ton LPG} = 0.69 \text{ tCO}_2 \text{ (a rounded value of 1 tCO}_2 \text{ is assumed)}$$

Project emissions due to the consumption of LPG are thus determined as 1 t CO_2 (rounded value). The summarized emission reduction calculation spreadsheet (that is enclosed to this Monitoring Report) includes all calculations related to the determination of $PE_{LPG,y}$ for the considered monitoring period.

Total project emissions (PE_y) are calculated as 466 t CO_2 (rounded value).

E.3. Calculation of leakage

>>

Not applicable.

E.4. Summary of calculation of emission reductions or net anthropogenic GHG removals by sinks

Emission reductions achieved by the project activity during the considered monitoring period (with baseline emissions for the period from 13/12/2013 to 31/12/2013 not being considered/accounted) are determined as the difference between baseline emissions (BE_y) and project emissions (PE_y) determined for such period. Calculations of baseline emissions (BE_y) are presented in Section E.1. Calculations of project emissions (PE_y) are presented in Section E.2. As summarized in the table below, during the monitoring period from 13/12/2013 to 12/06/2014 (with baseline emissions for period from 13/12/2013 to 31/12/2013 not being considered/accounted), achieved emission reductions are calculated and reported as 233,264 t CO_2e (rounded value):

Item	Baseline emissions or baseline net GHG removals by sinks (t CO ₂ e)	Project emissions or actual net GHG removals by sinks (t CO ₂ e)	Leakage (t CO ₂ e)	Emission reductions or net anthropogenic GHG removals by sinks (t CO ₂ e)
Total	233,730	466	-	233,264

E.5. Comparison of actual emission reductions or net anthropogenic GHG removals by sinks with estimates in registered PDD

Item	Values estimated in ex-ante calculation of registered PDD	Actual values achieved during this monitoring period
Emission reductions or GHG removals by sinks (t CO ₂ e)	506,165 ¹⁶	233,264

E.6. Remarks on difference from estimated value in registered PDD

>>

Emission reductions achieved by the project activity during the considered monitoring period are about 54% lower than the calculated value of ex-ante estimation of emission reductions as per the PDD that is comparable/equivalent for the considered 182-day monitoring period. The following aspects justify and explain the relative difference between such value for ex-ante estimation of emission reductions as per the PDD (calculated as equivalent for the considered monitoring period) and emission reductions actually achieved by the project activity during the considered monitoring period:

Aspects/conditions which represent a decrease factor of reported emission reductions for the considered monitoring period when compared against the ex-ante estimation of emission reduction for the same period in the PDD:

- 1) *Uncertainties associated with the application of First Order Decay (FOD) multi-phased model for estimating the emission reductions in the PDD:*

As outlined in the PDD, like other similar CDM project activities encompassing LFG collection and destruction/utilization, the amount of methane to be generated by decomposition of MSW disposed at the CTR Caieiras landfill and collected by the project activity was derived by applying the First Order Decay (FOD) model as per the methodological tool "Emission from Solid Waste Disposal Sites" (version 06.0.1) in the context of the determination of ex-ante estimated emission reductions to be achieved during the 2nd 7-year renewable crediting period. By taking in account all potential uncertainties associated with the application of such multi-phased decay model, it is reasonable to assume that, in the particular case of the project activity during the considered monitoring period, the application of this model somehow overestimated the amount of LFG to be actually generated and collected by the project activity. In this particular context, it is crucial to note that, while the PDD assumes a LFG collection efficiency of 92.80% (ex-ante determined parameter "Efficiency of the LFG capture system that will be installed in the project activity" (η_{PJ})) in the context of the ex-ante estimates of emission reductions, as outlined in Section A.1 and B.2, during the considered monitoring period there were relevant number of LFG collection wells and conventional LFG venting/combustion drains that were not connected to project activity, thus negatively

¹⁶ The 506,165 tCO₂e value is calculated as the share of estimated emission reductions for year 2013 to be achieved during the 19 day length period of 13/12/2013 to 21/12/2013 plus the 163 day length period in 2014, encompassing the 01/01/2014 to 12/06/2014 period.

affecting the collection efficiency of LFG generated in the site during the considered period. Besides of minor uncertainty aspects, this particular aspect represents a relevant negative impact over emission reductions achieved during the period (when compared to estimates in the PDD).

- 2) *Non-consideration of baseline emissions (i) during the 19-day period from 13/12/2013 to 31/12/2013 and (ii) during limited time periods (with less than 30 minutes each period) in which unexpected and intermittent electrical and data communication problems/failures occurred (problems/failures related to the PLC panel and/or signal from the LFG pressure sensor, LFG temperature sensor and two of the installed thermocouples) for the determination of emission reductions achieved by the project activity during the considered monitoring period:*

By not considering/accounting baseline emissions for the 19-day period within year 2013 (from 13/12/2013 to 31/12/2013), achieved emission reductions are decreased in 19,147 tCO₂e.

By not considering/accounting baseline emissions for the limited time periods in which unexpected and intermittent electrical and data communication problems/failures occurred, achieved emission reductions are decreased in 2,250 tCO₂e.

- 3) *Lack of LFG collection infrastructure covering all area of the very large CTR Caieiras landfill:* As outlined in the PDD (under Footnote 63 (Section B.6.1) and Footnote 79 (Section B.6.2)), significant amount of methane generated by the project activity has unfortunately not been collected and destroyed due to the lack of LFG collection infrastructure covering all area of the very large CTR Caieiras landfill.

- 4) *Selection of the 90% default values for efficiency of the flares ($\eta_{flare,m}$) and existence of time periods with flares not operating as per manufacturer's specifications (operational requirements) for temperature and/or flow rate:*

During the considered monitoring period, the project activity operated with one or more flare(s) of the set of installed flares not operating as per manufacturer's specifications (operational requirements) for temperature and/or flow rate during limited time periods. As established by applicable guidance of the methodological tool "Project emissions from flaring", during such time periods, where non-compliance with operational requirements for the installed flares occurred, the efficiency for combustion of methane in the flare(s) in question was considered as null (zero), thus negatively affecting emission reductions achieved by the project activity during the considered monitoring period. Furthermore, differently than previously considered in the context of the ex-ante estimation of emission reductions to be achieved by the project activity as outlined in the registered PDD, the selection of the 90% default values for efficiency of the flares ($\eta_{flare,m}$) also promoted relative decrease of emission reductions to be achieved by the project activity in a range close to 10%.

E.7. Actual emission reductions or net anthropogenic GHG removals by sinks during the first commitment period and the period from 1 January 2013 onwards

Item	Actual values achieved up to 31 December 2012	Actual values achieved from 1 January 2013 onwards
Emission reductions or GHG removals by sinks (t CO ₂ e)	-	233,264

- - - - -

Appendix 1. Contact information of project participants and responsible persons/ entities

Project participant and/or responsible person/ entity	<input checked="checked" type="checkbox"/> Project participant <input type="checkbox"/> Responsible person/ entity for completing the CDM-MR-FORM
Organization name	Essencis Soluções Ambientais S.A.
Street/P.O. Box	Rodovia dos Bandeirantes, km 33
Building	
City	Caieiras
State/Region	São Paulo
Postcode	07803-970
Country	Brasil
Telephone	+55 11 4442 7300
Fax	+55 11 4442 7300
E-mail	ffreitas@essencis.com.br
Website	www.essencis.com.br
Contact person	Mr. Fernando Freitas
Title	Project Manager
Salutation	Mr.
Last name	Freitas
Middle name	
First name	Fernando
Department	Biogas
Mobile	
Direct fax	
Direct tel.	
Personal e-mail	ffreitas@essencis.com.br

Project participant and/or responsible person/ entity	<input checked="" type="checkbox"/> Project participant <input type="checkbox"/> Responsible person/ entity for completing the CDM-MR-FORM
Organization name	Nordic Environment Finance Corporation
Street/P.O. Box	Fabianinkatu 34 – 241
Building	
City	Helsinki
State/Region	
Postcode	FI-00171
Country	Finland
Telephone	+358 10 618 0664
Fax	+358 10 618 0664
E-mail	helle.lindegaard@nefco.fi
Website	www.nefco.org
Contact person	Helle Lindegaard
Title	Mrs.
Salutation	
Last name	Lindegaard
Middle name	
First name	Helle
Department	
Mobile	
Direct fax	
Direct tel.	
Personal e-mail	

Project participant and/or responsible person/ entity	<input checked="checked" type="checkbox"/> Project participant <input type="checkbox"/> Responsible person/ entity for completing the CDM-MR-FORM
Organization name	Nordic Environment Finance Corporation
Street/P.O. Box	Fabianinkatu 33 – 241
Building	
City	Helsinki
State/Region	
Postcode	FI-00171
Country	Finland
Telephone	+358 10 618 0651
Fax	+358 10 618 0651
E-mail	tina.nyberg@nefco.fi
Website	www.nefco.org
Contact person	Tyna Nyberg
Title	Mrs.
Salutation	
Last name	Nyberg
Middle name	
First name	Tyna
Department	
Mobile	
Direct fax	
Direct tel.	
Personal e-mail	

Project participant and/or responsible person/ entity	<input type="checkbox"/> Project participant <input checked="" type="checkbox"/> Responsible person/ entity for completing the CDM-MR-FORM
Organization name	UniCarbo Energia e Biogás Ltda.
Street/P.O. Box	Avenida Eng. Luis Carlos Berrini, 1140 - 72
Building	
City	São Paulo
State/Region	São Paulo, SP
Postcode	04571-000
Country	Brazil
Telephone	+ 55 11 9 8596 0950
Fax	+ 55 11 9 8596 0950
E-mail	nuno@unicarbo.com.br
Website	www.unicarbo.com.br
Contact person	Nuno Barbosa
Title	Mr.
Salutation	
Last name	Barbosa
Middle name	
First name	Nuno
Department	
Mobile	
Direct fax	
Direct tel.	
Personal e-mail	

- - - - -

Document information

<i>Version</i>	<i>Date</i>	<i>Description</i>
04.0	25 June 2014	Revisions to: <ul style="list-style-type: none"> • Include the Attachment: Instructions for filling out the monitoring report form (these instructions supersede the "Guideline: Completing the monitoring report form" (Version 04.0)); • Include provisions related to standardized baselines; • Add contact information on a responsible person(s)/ entity(ies) for completing the CDM-MR-FORM in A.6 and Appendix 1; • Change the reference number from <i>F-CDM-MR</i> to <i>CDM-MR-FORM</i>; • Editorial improvement.
03.2	5 November 2013	Editorial revision to correct table in page 1.
03.1	2 January 2013	Editorial revision to correct table in section E.5.
03.0	3 December 2012	Revision required to introduce a provision on reporting actual emission reductions or net anthropogenic GHG removals by sinks for the period up to 31 December 2012 and the period from 1 January 2013 onwards (EB70, Annex 11).
02.0	13 March 2012	Revision required to ensure consistency with the "Guidelines for completing the monitoring report form" (EB 66, Annex 20).
01	28 May 2010	EB 54, Annex 34. Initial adoption.
Decision Class: Regulatory Document Type: Form Business Function: Issuance Keywords: monitoring report		