



CAIEIRAS LANDFILL GAS EMISSION REDUCTION

ESSENCIS SOLUÇÕES AMBIENTAIS SA

CTR CAIEIRAS – SP BRAZIL

REFERENCE NUMBER: 0171
Version 1

Crediting Period:
March, 31st 2006 to March 30th 2013

Monitoring Period:
July, 1st 2008 to December, 31st 2009

3rd VERIFICATION

January/2010

INDEX

INDEX	2
GLOSSARY OF TERMS	3
INTRODUCTION	4
OBJECTIVE	4
GENERAL DESCRIPTION OF THE PROJECT	4
Project Participants:.....	4
Project location / general data:	4
BASELINE AND MONITORING METHODOLOGY	5
Data collected in order to monitor emissions from the project activity, and how this data will be archived:	6
Flare working hours:.....	8
CER VOLUME REQUIRED	9
Calculation MEMO:.....	9
SUSTAINABLE DEVELOPMENT MEMO.....	10
COMMENT	10
ANNEX	12
1) Supervisor Program. (*1)	13
2) Example of the original CLP registers. (*2)	14
3) Example of the electronic CER report registration that is made each one minute “IMP 403 – Dados Registrador Isodoc” (*3)	15
4) TABLE SUMMARY (*4)	16
5) ISO 9001 certificate	22
6) ISO 14001 certificate	22

GLOSSARY OF TERMS

% CH ₄	% Methane
AM	Approved Methodology
CDM	Clean Development Mechanism
CER	Certified Emission Reduction
CF	Conversion Factor
CH ₄	Methane
CLP	Logical programmed control
CNTP	Standard Temperature and Pressure Condition
CO ₂	Carbon dioxide
CTRC	Caieiras Landfill
DNV	Det Norske Veritas
ER	Emission Reduction
ERM	Environment Resources Management Ltd.
FT-01	Biogas Flow
GHG	Greenhouse Gases
GWP	Global Warming Potential
LFG	Landfill Gas
MVP	Monitoring and Verification Protocol
Nm ³	Normal cubic meters
O ₂	Oxygen
P	Pressure
PDD	Project Design Document
PT-02	Biogas Pressure
PTO	Operational Procedure
RSD	Household solid waste
SD	Sustainable Development
SGS	Société Generale de Surveillance
TCO _{2e}	Tonne of Carbon Dioxide Equivalent
TT-02	Biogas Temperature
TT-11	Flare Temperature

INTRODUCTION

ESSENCIS SOLUÇÕES AMBIENTAIS SA is located in Bandeirantes highway, Km 33, Caieiras, São Paulo, Brazil and implanted the LANDFILL GAS EMISSIONS REDUCTION in the CTR Caieiras (CTRC) according to Project Design Document version 3 of September 2005. The project was properly validated in December/2004 (as by the validation report DNV No. 2005-458 ver.4 of May 1st, 2005), approved by the Brazilian Government on August 24th, 2005 and registered at Executive Board at March 9th, 2006. The crediting period is 21 years.

The biogas system has been inserted in the ESSENCIS ISO 9001 systems in May 30th. The company is certified ISO 14001 since Jun 16th, 2006. The certification scope from the Biogas management activity was audited and approved by BSI.

OBJECTIVE

The purpose of this report is to quantify the volume performed of Greenhouse Gas Emission Reductions (ER), in tones of carbon dioxide equivalent from July 1st of 2008 to December 31st of 2009 to be certified by the Designated Operational Entity as per The Kyoto Protocol and CDM Modalities Procedures requirements (Decision 17.CP7).

GENERAL DESCRIPTION OF THE PROJECT

The project activity in question is located inside the CTR Caieiras, and consists of the capture of methane produced by waste decomposition and its complete destruction by combustion at high temperatures.

Project Participants:

Project operator:	ESSENCIS SOLUÇÕES AMBIENTAIS S.A. BRAZIL, (project developer)
Annex 1 Party:	ELECTRIC POWER DEVELOPMENT CO., LTD. JAPAN

Project location / general data:

The CTR Caieiras is located on the extreme northeast of Caieiras municipality, on the Metropolitan Area of São Paulo (RMSP).

BASELINE AND MONITORING METHODOLOGY

Approved consolidated monitoring methodology ACM0001 version 2:
“Consolidated monitoring methodology for landfill gas project activities”.

This methodology is applicable to landfill gas capture project activities where the baseline is the partial or total atmospheric release of the gas and the project activities include situations such as:

a) the captured gas is flared”

The items b and c are not applicable to Caieiras landfill gas emission reduction project and then will not be mentioned in this PDD.

The electricity generation from biogas was not contemplated by the project for this period. The electricity used to pump biogas (potential leakage) is from the grid, hydro power source predominant in the region.

Methane collected and flared:

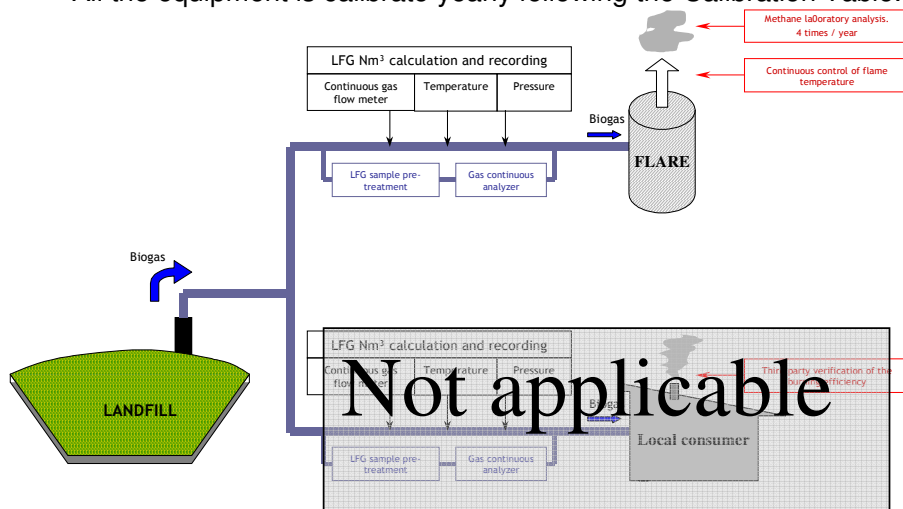
The amount of methane actually flared ($MD_{\text{flared},y}$) will be determined by monitoring, as follows:

- Amount of landfill gas collected (LFG_y) in m^3 , using a continuous flow meter;
- Percentage of landfill gas that is methane (w_{CH_4y}) in %, using a continuous analyzer;

In addition, the methane content of the flare emissions will be analyzed at least quarterly to determine the flare efficiency (FE), the fraction of methane destroyed.

And also, regarding quality procedures:

- The equipment to measure the biogas flow must be appropriated to the local climate conditions and to any contaminant that might exist in the biogas;
- All the equipment is calibrated yearly following the Calibration Table.



Data collected in order to monitor emissions from the project activity, and how this data is collected								
ID number	Data variable	Source of data	Data unit	Measured (m), calculated (c), estimated (e),	Recording frequency	Proportion of data to be monitored	How will the data be archived? (electronic/ paper)	
1	LFG _{total,y}	Total amount of landfill gas captured and flared	[m ³]	m and c	Continuous/periodic	100%	electronic	Measured period flared. Data is The re
2	LFG _{flare,y}	Amount of landfill gas flared	[m ³]	m and c	Continuous	100%	electronic	Measured analyz compl Sm3/h pressu workin
3	LFG _{electricity,y}	Amount of landfill gas going into electricity generator	[m ³]	m and c	Continuous	100%	electronic	Not / genera period

4	FE	Flare combustion/ efficiency determined by external company in Essencis site	%	m and c	Quarterly	N/a	Electronic /	Period conter
5	$w_{CH_4,y}$	Methane fraction in the landfill gas	%	m and c	Continuous	100%	electronic	Measu analyz
6	T	Temperature of the landfill gas	[°C]	m	Continuous / periodic	100%	electronic	Measu to Nm
7	P	Pressure of the landfill gas	[Pa]	m	Continuous / periodic	100%	electronic	Measu to Nm
8	Energy	Total amount of electricity and/or other energy carriers used in the project for gas pumping and heat transport (not derived from de gas)	[MWh l]	m	Continuous	100%	Electronic and paper	Requii from t carrier

9	CO2 emission	CO2 emission intensity of the electricity and/or other energy carriers in ID 3.9	[m³]	m	Annually	100%	electronic	Requir from t carrier
10	HE	Regulatory requirements relating to landfill gas projects	Test	n/a	Annually	100%	electronic	Requir adjust MDreç
11	MDindus try,y	Amount of methane sold to industry	[m³]	m	Continuous	100%	Electronic and invoice	Not A metha

Flare working hours:

Flare working hours		
Flare	1	2
July/08	727 h	0 h
August/08	719 h	0 h
September/08	715 h	0 h
October/08	697 h	0 h
November/08	682 h	411 h
December/08	720 h	720 h
January/09	712 h	715 h
February/09	377 h	661 h
March/09	716 h	717 h
April/09	690 h	704 h
May/09	729 h	733 h
June/09	710 h	711 h
July/09	730 h	733 h
August/09	736 h	737 h
September/09	669 h	680 h
October/09	729 h	732 h
November/09	680 h	688 h
December/09	656 h	702 h

The Flare working hours is calculated in document "IMP 403 - Dados Regist the registered minutes of operation.

CER VOLUME REQUIRED

The CER volume required for this period is **732,529 tons**.

Calculation MEMO:

The supervisor system calculates the methane flow in Nm³/h according to the monitoring plan (annex 4 PDD).

$$ER = Q_{CH_4} \times \text{Density}_{\text{biogas}} \times \text{Global Warming Potential of Methane} \times \text{Baseline factor} \times \text{Methane efficiency destruction factor}$$

ER1 (from June 30 to August 7): $((29,970,950.08 - 26,449,560.47) \times 0,0007168 \times 21 \times 0,8 \times 0,999914) = 42,401.77$ TCO₂e;

ER2 (from August 8 to November 17): $((39,917,955.71 - 29,970,950.08) \times 0,0007168 \times 21 \times 0,8 \times 0,974361) = 116,713.08$ TCO₂e;

ER3 (from November 18 to January 27): $((47,201,684.27 - 39,917,955.71) \times 0,0007168 \times 21 \times 0,8 \times 0,999889) = 87,702.67$ TCO₂e;

ER4 (from January 28 to April 02): $((53,938,506.37 - 47,201,684.27) \times 0,0007168 \times 21 \times 0,8 \times 0,999993) = 81,125.86$ TCO₂e;

ER5 (from April 3 to July 12): $((65,380,068.36 - 53,938,505.37) \times 0,0007168 \times 21 \times 0,8 \times 0,999991) = 137,780.81$ TCO₂e;

ER6 (from July 13 to October 20): $((77,626,329.58 - 65,380,068.36) \times 0,0007168 \times 21 \times 0,8 \times 0,999955) = 147,465.78$ TCO₂e;

ER7 (from October 21 to December 31): $((87,594,095.46 - 77,626,329.58) \times 0,0007168 \times 21 \times 0,8 \times 0,999974) = 120,031.11$ TCO₂e

$$ER = ER1 + ER2 + ER3 + ER4 + ER5 + ER6 + ER7 = 733,221 \text{ TCO}_2\text{e}$$

$Q_{CH_4} = 87,594,095.46 - 26,449,560.47 = 61,144,534.99$ Total Methane Flow (Nm³)
 (from July 1st 2008 to December 31st 2009)

Density_{biogas} = 0.0007168 t/Nm³;

Global Warming Potential of Methane = 21t CO₂e/tCH₄;

Baseline factor = 0.8;

Methane efficiency destruction factor = (from June 30 to August 7) = 0.999914; (from August 8 to November 17) = 0.974361; (from November 18 to January 27) = 0.999889; (from January 28 to April 02) = 0.999993; (from April 3 to July 12) = 0.999991; (from July 13 to October 20) = 0.999955; (from October 21 to December 31) = 0.999974.

According to PDD, the flare efficiency test must be done 4 times per year.

Was used the lower values efficiency of burned for the period of each test;

Emission Factor of the Brazilian Grid (EF) = 0.282 tCO₂e/MWh (from July/08 to December/08. Brazilian Government did not issued the 2009 EF, so the same factor is considered to 2009 for the period from January/09 to December/09);

Emission factor from the LGP (EFLGP) = 2.93 tCO₂e/t LGP

(IPCC 2006 - <http://cdm.unfccc.int/UserManagement/FileStorage/YELQ5DR68TVMYTV5BI7S1J15B8FNN2>);

(Emissions Factor according to the Science And Technology Ministry

<http://www.mct.gov.br/index.php/content/view/full/74689.html>)

TOTAL ER for this period w/o leakage:	tCO ₂ e	733,221
Leakage – Electric energy (529 MWh – 2008 and 1,907 MWh - 2009) Total = 2,436 x 0.282 =	tCO ₂ e	-687
Leakage – Butane/Propane (1.44 t) Total= 1.44 x 2.93 = 4.21	tCO ₂ e	-5

TOTAL CER REQUIRED	tCO₂e	732,529
---------------------------	-------------------------	----------------

SUSTAINABLE DEVELOPMENT MEMO

Investments in sustainable development project will be executed with allocated amount of 2% of value from net proceeds from CER sales.

The total invested until the present date (R\$ 166,368.91 for the first verification, R\$ 85,969.66 for the second verification and R\$ 157,787.98 for this verification) is R\$ 410,126.55 that represent much more than 2% of net proceeds and will be accumulate to the next years.

Essencis has two big development programs.

The first is the “literacy program”, to give more opportunities to his employees, and the other is “digital inclusion program”, to teach computer to his employees too.

“Sustainable future” is another program to incentive his employees in make social actions.

Students that visit constantly the landfill are followed by engineers from landfill and from biogas collection system.

Professionals in charge:

Luzia Galdeano - Operacional Manager
 Fernando Freitas - Operacional Supervisor
 Mark Zulauf - Technical Consultant

COMMENT

*1) This is a pictures of the supervisor program that record the data

*2) This table is a PDF file (inviolable) register from the CLP of all parameters monitored, including: Biogas Flow (FT-01), Biogas Pressure (PT-02), % CH₄, % CO₂, % O₂, Biogas Temperature (TT-02) and Flares Temperatures (TT-11 and TT-12). This registers are each 01 minutes and the information are used in table named “IMP 403 – Dados Registrador Isodoc”.

*3) The “IMP 403 – Dados Registrador Isodoc” use the parameters registered from CLP to calculate the Biogas flow, methane flow and methane mass. This data will be used in “TABLE SUMMARY” to calc the CER.

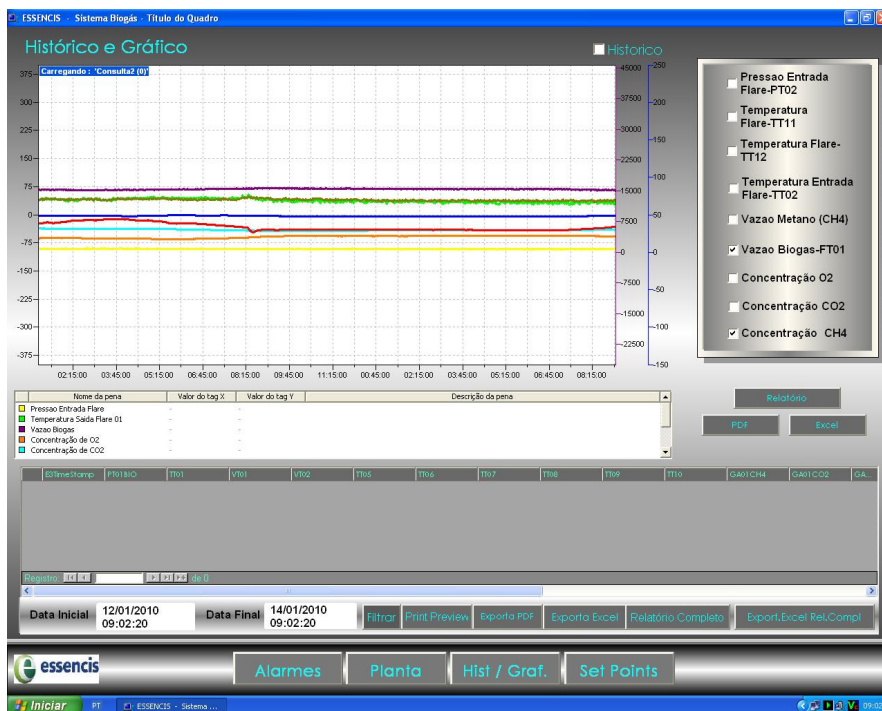
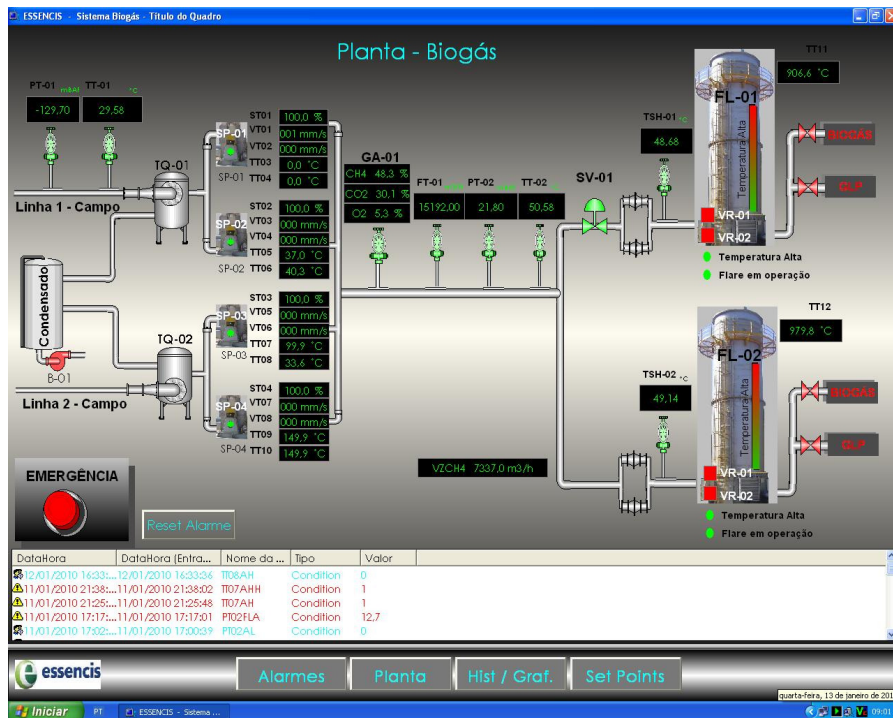
*4) This table show, Accumulated Methane Flow, Daily Methane Flow, Accumulated Methane Mass, Daily Methane Mass, Flare Efficiency, Accumulated CO₂e, Electric energy, LGP consumption and Social workmanships.

The results of CER produced are in this table (ER).

The Accumulated Methane Flow in 30th June/08 (26,449,560.47) is the last data used in 2a verification. For this audit we used the last Accumulated Methane Flow in 31st December/09 (87,594,095.46) deducting the 30th June/08 value.

ANNEX

1) Supervisor Program. (*1)



2) Example of the original CLP registers. (*2)

Relatórios de Medidas								
Data\Hora	FT01	PT02	%CH4	%CO2	%O2	TT02	TT 11	TT 12
1/4/2009 00:00:11	10185	10	49,2752	29,4	4,364	40,19	669,2	871,2
1/4/2009 00:01:11	10186	10,5	49,2654	29,41	4,388	40,19	664,8	868,7
1/4/2009 00:02:11	10184	10,3	49,2752	29,4	4,394	40,16	669,6	870,4
1/4/2009 00:03:11	10211	10,3	49,2556	29,4	4,386	40,2	679,8	873,8
1/4/2009 00:04:11	10213	10,7	49,2752	29,39	4,391	40,16	685,7	876,1
1/4/2009 00:05:11	10184	10,3	49,2556	29,47	4,39	40,14	701,6	878,4
1/4/2009 00:06:11	10187	10,5	49,2654	29,42	4,39	40,14	704,7	877,6
1/4/2009 00:07:11	10168	10	49,2752	29,42	4,399	40,14	697,8	875,5
1/4/2009 00:08:11	10185	10,6	49,3438	29,39	4,386	40,14	699,2	875
1/4/2009 00:09:11	10190	10,4	49,383	29,4	4,39	40,09	695,2	876,1
1/4/2009 00:10:11	10181	10,1	49,3928	29,41	4,396	40,14	692,1	876,5
1/4/2009 00:11:11	10175	10,2	49,3536	29,39	4,39	40,14	682,9	879,9
1/4/2009 00:12:11	10176	10,6	49,3732	29,46	4,39	40,14	675,5	871,7
1/4/2009 00:13:11	10159	10,2	49,285	29,42	4,386	40,14	659,9	867,4
1/4/2009 00:14:11	10180	11,5	49,2556	29,44	4,39	40,09	652,1	861,9
1/4/2009 00:15:11	10154	10	49,236	29,48	4,388	40,14	642,7	862,2
1/4/2009 00:16:11	10185	10,1	49,2752	29,39	4,388	40,14	644,8	857,9
1/4/2009 00:17:11	10176	10,8	49,2752	29,45	4,383	40,14	641,5	858
1/4/2009 00:18:11	10184	10,3	49,2752	29,49	4,382	40,14	632,4	860,7
1/4/2009 00:19:11	10192	9,9	49,2752	29,58	4,39	40,14	635,4	856,4
1/4/2009 00:20:11	10198	10,8	49,2458	29,52	4,391	40,14	646,8	855,8
1/4/2009 00:21:11	10217	10,3	49,2752	29,55	4,38	40,14	646,1	863,1
1/4/2009 00:22:11	10204	10,3	49,2752	29,55	4,386	40,14	663,9	868
1/4/2009 00:23:11	10225	11	49,285	29,52	4,39	40,14	674,2	869,6
1/4/2009 00:24:11	10228	9,8	49,2752	29,52	4,391	40,14	691,9	861,5
1/4/2009 00:25:11	10228	11	49,3732	29,48	4,394	40,14	686,4	861,7
1/4/2009 00:26:11	10227	10,5	49,3732	29,55	4,382	40,14	691,8	864,5
1/4/2009 00:27:11	10225	10,2	49,383	29,47	4,391	40,14	683,6	863
1/4/2009 00:28:11	10213	10,7	49,3732	29,5	4,391	40,14	680,3	858,9
1/4/2009 00:29:11	10229	10,7	49,4516	29,55	4,382	40,14	687,1	865,6
1/4/2009 00:30:11	10222	10,9	49,4614	29,5	4,368	40,14	678,2	866,1
1/4/2009 00:31:11	10252	10	49,4418	29,48	4,373	40,14	676,8	863,1
1/4/2009 00:32:11	10250	10,3	49,4418	29,46	4,361	40,09	681,2	856,4
1/4/2009 00:33:11	10220	11,1	49,4614	29,49	4,359	40,09	678,9	855,4
1/4/2009 00:34:11	10247	11	49,5594	29,57	4,357	40,07	665,4	860,6
1/4/2009 00:35:11	10257	10,5	49,5496	29,49	4,368	40,07	656	858,6
1/4/2009 00:36:11	10248	11,4	49,5594	29,52	4,365	40,07	650,2	860,6
1/4/2009 00:37:11	10224	10,7	49,4614	29,52	4,365	40,09	652,9	861,7
1/4/2009 00:38:11	10236	10,2	49,4614	29,55	4,357	40,07	675,5	874,6
1/4/2009 00:39:11	10229	10,7	49,4614	29,49	4,365	40,06	683	868,1
1/4/2009 00:40:11	10237	10,5	49,4614	29,48	4,361	40,05	686,3	869,9
1/4/2009 00:41:11	10256	10,3	49,3634	29,51	4,371	40	696,1	870,8
1/4/2009 00:42:11	10219	10,2	49,383	29,48	4,365	39,96	696,5	870,9
1/4/2009 00:43:11	10236	10,7	49,3732	29,55	4,361	39,97	695,6	864,8
1/4/2009 00:44:11	10241	11,3	49,3634	29,48	4,388	39,96	684,1	856,6
1/4/2009 00:45:11	10211	11,8	49,383	29,5	4,382	39,96	686,8	853,9
1/4/2009 00:46:11	10227	10,5	49,3438	29,51	4,382	39,93	684,5	865,8
1/4/2009 00:47:11	10239	10,7	49,3732	29,54	4,39	39,91	677	869,9
1/4/2009 00:48:11	10204	11	49,3438	29,48	4,391	39,96	681,7	868,4
1/4/2009 00:49:11	10200	10,5	49,3732	29,48	4,383	39,91	685,4	863,8

3) Example of the electronic CER report registration that is made each one minute “IMP 403 – Dados Registrador Isodoc” (*3)

DADOS DO REGISTRADOR												
Densidade CH4		0,7168				kg/m3						
Eficiência Flare GLP	0,995											
Energia Elétrica Fator LB	0,8											
Hora Registro	FT-01	PT-02	%CH4	TT-02	TT-11	TT-12	Vazão de Biogás unitária (1 min)	Vazão de Biogás acumulada	Vazão de Metano unitária (1 min)	Vazão de Metano acumulada	Massa de Metano unitária (1 min)	Massa Metano Acumulada
01 por minuto	m3/h	mBar	%	°C	°C	°C	Nm3	Nm3	Nm3	Nm3	kg	kg
1/4/2009 00:00:11	10185	10	49,2752	40,19	669,2	871,2	149,45	115.564.694,42	73,64	53.742.524,05	52,79	38.522.641,24
1/4/2009 00:01:11	10186	10,5	49,2654	40,19	664,8	868,7	149,54	115.564.843,95	73,67	53.742.597,72	52,81	38.522.694,04
1/4/2009 00:02:11	10184	10,3	49,2752	40,16	669,6	870,4	149,49	115.564.993,45	73,66	53.742.671,38	52,80	38.522.746,84
1/4/2009 00:03:11	10211	10,3	49,2556	40,2	679,8	873,8	149,87	115.565.143,31	73,82	53.742.745,20	52,91	38.522.799,76
1/4/2009 00:04:11	10213	10,7	49,2752	40,16	685,7	876,1	149,98	115.565.293,29	73,90	53.742.819,10	52,97	38.522.852,73
1/4/2009 00:05:11	10184	10,3	49,2556	40,14	701,6	878,4	149,50	115.565.442,79	73,64	53.742.892,73	52,78	38.522.905,51
1/4/2009 00:06:11	10187	10,5	49,2654	40,14	704,7	877,6	149,57	115.565.592,36	73,69	53.742.966,42	52,82	38.522.958,33
1/4/2009 00:07:11	10168	10	49,2752	40,14	697,8	875,5	149,22	115.565.741,58	73,53	53.743.039,95	52,71	38.523.011,04
1/4/2009 00:08:11	10185	10,6	49,3438	40,14	699,2	875	149,56	115.565.891,14	73,80	53.743.113,75	52,90	38.523.063,94
1/4/2009 00:09:11	10190	10,4	49,383	40,09	695,2	876,1	149,63	115.566.040,77	73,89	53.743.187,64	52,96	38.523.116,90
1/4/2009 00:10:11	10181	10,1	49,3928	40,14	692,1	876,5	149,43	115.566.190,20	73,81	53.743.261,44	52,90	38.523.169,80
1/4/2009 00:11:11	10175	10,2	49,3536	40,14	682,9	879,9	149,35	115.566.339,55	73,71	53.743.335,16	52,84	38.523.222,64
1/4/2009 00:12:11	10176	10,6	49,3732	40,14	675,5	871,7	149,43	115.566.488,98	73,78	53.743.408,93	52,88	38.523.275,52
1/4/2009 00:13:11	10159	10,2	49,285	40,14	659,9	867,4	149,12	115.566.638,09	73,49	53.743.482,43	52,68	38.523.328,20
1/4/2009 00:14:11	10180	11,5	49,2556	40,09	652,1	861,9	149,64	115.566.787,74	73,71	53.743.556,13	52,83	38.523.381,04
1/4/2009 00:15:11	10154	10	49,236	40,14	642,7	862,2	149,02	115.566.936,75	73,37	53.743.629,50	52,59	38.523.433,63
1/4/2009 00:16:11	10185	10,1	49,2752	40,14	644,8	857,9	149,49	115.567.086,24	73,66	53.743.703,16	52,80	38.523.486,43
1/4/2009 00:17:11	10176	10,8	49,2752	40,14	641,5	858	149,46	115.567.235,69	73,65	53.743.776,81	52,79	38.523.539,22
1/4/2009 00:18:11	10184	10,3	49,2752	40,14	632,4	860,7	149,50	115.567.385,19	73,67	53.743.850,47	52,80	38.523.592,02
1/4/2009 00:19:11	10192	9,9	49,2752	40,14	635,4	856,4	149,56	115.567.534,75	73,70	53.743.924,17	52,82	38.523.644,84
1/4/2009 00:20:11	10198	10,8	49,2458	40,14	646,8	855,8	149,78	115.567.684,53	73,76	53.743.997,93	52,87	38.523.697,72
1/4/2009 00:21:11	10217	10,3	49,2752	40,14	646,1	863,1	149,98	115.567.834,52	73,91	53.744.071,83	52,98	38.523.750,69
1/4/2009 00:22:11	10204	10,3	49,2752	40,14	663,9	868	149,79	115.567.984,31	73,81	53.744.145,65	52,91	38.523.803,60
1/4/2009 00:23:11	10225	11	49,285	40,14	674,2	869,6	150,21	115.568.134,52	74,03	53.744.219,67	53,06	38.523.856,66
1/4/2009 00:24:11	10228	9,8	49,2752	40,14	691,9	861,5	150,07	115.568.284,59	73,95	53.744.293,62	53,01	38.523.909,67
1/4/2009 00:25:11	10228	11	49,3732	40,14	686,4	861,7	150,25	115.568.434,84	74,18	53.744.367,81	53,17	38.523.962,84
1/4/2009 00:26:11	10227	10,5	49,3732	40,14	691,8	864,5	150,16	115.568.585,00	74,14	53.744.441,94	53,14	38.524.015,99
1/4/2009 00:27:11	10225	10,2	49,383	40,14	683,6	863	150,09	115.568.735,09	74,12	53.744.516,06	53,13	38.524.069,11
1/4/2009 00:28:11	10213	10,7	49,3732	40,14	680,3	858,9	149,99	115.568.885,07	74,05	53.744.590,11	53,08	38.524.122,19
1/4/2009 00:29:11	10229	10,7	49,4516	40,14	687,1	865,6	150,22	115.569.035,29	74,29	53.744.664,40	53,25	38.524.175,44
1/4/2009 00:30:11	10222	10,9	49,4614	40,14	678,2	866,1	150,15	115.569.185,44	74,26	53.744.738,67	53,23	38.524.228,68
1/4/2009 00:31:11	10252	10	49,4418	40,14	676,8	863,1	150,45	115.569.335,89	74,39	53.744.813,05	53,32	38.524.282,00
1/4/2009 00:32:11	10250	10,3	49,4418	40,09	681,2	856,4	150,49	115.569.486,39	74,41	53.744.887,46	53,33	38.524.335,33
1/4/2009 00:33:11	10220	11,1	49,4614	40,09	678,9	855,4	150,17	115.569.636,56	74,28	53.744.961,74	53,24	38.524.388,57
1/4/2009 00:34:11	10247	11	49,5594	40,07	665,4	860,6	150,56	115.569.787,12	74,62	53.745.036,35	53,49	38.524.442,06
1/4/2009 00:35:11	10257	10,5	49,5496	40,07	656	858,6	150,64	115.569.937,76	74,64	53.745.110,99	53,50	38.524.495,56
1/4/2009 00:36:11	10248	11,4	49,5594	40,07	650,2	860,6	150,64	115.570.088,39	74,65	53.745.185,65	53,51	38.524.549,07
1/4/2009 00:37:11	10224	10,7	49,4614	40,09	652,9	861,7	150,17	115.570.238,56	74,28	53.745.259,93	53,24	38.524.602,31
1/4/2009 00:38:11	10236	10,2	49,4614	40,07	675,5	874,6	150,28	115.570.388,85	74,33	53.745.334,26	53,28	38.524.655,60
1/4/2009 00:39:11	10229	10,7	49,4614	40,06	683	868,1	150,26	115.570.539,10	74,32	53.745.408,58	53,27	38.524.708,87
1/4/2009 00:40:11	10237	10,5	49,4614	40,05	686,3	869,9	150,35	115.570.689,46	74,37	53.745.482,94	53,31	38.524.762,17
1/4/2009 00:41:11	10256	10,3	49,3634	40	696,1	870,8	150,62	115.570.840,08	74,35	53.745.557,30	53,30	38.524.815,47
1/4/2009 00:42:11	10219	10,2	49,383	39,96	696,5	870,9	150,09	115.570.990,17	74,12	53.745.631,41	53,13	38.524.868,60
1/4/2009 00:43:11	10236	10,7	49,3732	39,97	695,6	864,8	150,40	115.571.140,57	74,26	53.745.705,67	53,23	38.524.921,83
1/4/2009 00:44:11	10241	11,3	49,3634	39,96	684,1	856,6	150,57	115.571.291,14	74,33	53.745.780,00	53,28	38.524.975,10
1/4/2009 00:45:11	10211	11,8	49,383	39,96	686,8	853,9	150,21	115.571.441,35	74,18	53.745.854,18	53,17	38.525.028,27
1/4/2009 00:46:11	10227	10,5	49,3438	39,93	684,5	865,8	150,26	115.571.591,61	74,14	53.745.928,32	53,15	38.525.081,42
1/4/2009 00:47:11	10239	10,7	49,3732	39,91	677	869,9	150,48	115.571.742,09	74,30	53.746.002,62	53,26	38.525.134,68
1/4/2009 00:48:11	10204	11	49,3438	39,96	681,7	868,4	149,98	115.571.892,07	74,01	53.746.076,62	53,05	38.525.187,72
1/4/2009 00:49:11	10200	10,5	49,3732	39,91	685,4	863,8	149,87	115.572.041,95	74,00	53.746.150,62	53,04	38.525.240,77

4) TABLE SUMMARY (*4)

Date	Accumulated Methane Flow	Daily Methane Flow	Accumulated Methane Mass (Flow x Density)	Daily Methane Mass	Flare Efficiency	CO2e Daily	CO2e Accumulated	Electric energy	LGP consumption	Social workmanships
	Nm3	Nm3	Kg	Kg	%	Ton	Ton	Kw/h	Kg	R\$
30/6/2008 23:59:53	26.449.560,47		18.959.044,95							
1/7/08 23:59	26.539.290,76	89.730,29	19.023.363,62	64.318,67	99,9914%	1.080,46	1.080,46			
2/7/08 23:59	26.627.909,19	88.618,43	19.086.885,30	63.521,69	99,9914%	1.067,07	2.147,53			
3/7/08 23:59	26.712.041,25	84.132,08	19.147.181,18	60.305,27	99,9914%	1.013,05	3.160,58			
4/7/08 23:59	26.800.231,90	88.190,64	19.210.406,23	63.215,05	99,9914%	1.061,92	4.222,51			
5/7/08 23:59	26.889.058,79	88.626,89	19.274.077,34	63.671,11	99,9914%	1.069,58	5.292,09			
6/7/08 23:59	26.977.696,92	88.638,13	19.337.613,15	63.535,81	99,9914%	1.067,31	6.359,40			
7/7/08 23:59	27.064.431,05	86.734,13	19.399.784,18	62.171,03	99,9914%	1.044,38	7.403,78			
8/7/08 23:59	27.154.991,71	90.560,65	19.464.698,06	64.913,88	99,9914%	1.090,46	8.494,24			
9/7/08 23:59	27.245.445,27	90.453,56	19.529.535,17	64.837,11	99,9914%	1.089,17	9.583,41			
10/7/2008 23:59:47	27.330.780,42	85.335,15	19.590.703,40	61.168,24	99,9914%	1.027,54	10.610,95			
11/7/2008 23:59:17	27.418.131,23	87.350,81	19.653.316,46	62.513,06	99,9914%	1.051,81	11.662,76			
12/7/2008 23:59:19	27.506.063,92	87.932,69	19.716.346,62	63.030,15	99,9914%	1.058,82	12.721,57			
13/7/2008 23:59:22	27.593.143,07	87.079,15	19.778.764,95	62.418,33	99,9914%	1.048,54	13.770,11			
14/7/2008 23:59:28	27.672.916,18	79.773,11	19.835.946,32	57.181,37	99,9914%	960,56	14.730,68			
15/7/2008 23:59:30	27.760.241,92	87.325,74	19.898.541,41	62.595,09	99,9914%	1.051,51	15.782,18			
16/7/2008 23:59:11	27.850.082,78	89.840,86	19.962.939,34	64.397,93	99,9914%	1.081,79	16.863,98	93.863	180	R\$ 3.000,00
17/7/2008 23:59:13	27.936.301,68	86.218,90	20.024.741,05	61.801,71	99,9914%	1.038,18	17.902,15			
18/7/2008 23:59:44	28.019.465,88	83.164,20	20.084.353,15	59.612,10	99,9914%	1.001,40	18.903,55			
19/7/2008 23:59:46	28.116.382,07	96.916,19	20.153.822,67	69.468,52	99,9914%	1.166,99	20.070,54			
20/7/2008 23:59:49	28.214.200,90	97.818,83	20.223.939,21	70.116,54	99,9914%	1.177,86	21.248,40			
21/7/2008 23:59:51	28.298.947,25	84.746,35	20.284.685,39	60.746,18	99,9914%	1.020,45	22.268,84			
22/7/2008 23:59:55	28.390.377,70	91.130,45	20.350.007,69	65.322,31	99,9914%	1.097,32	23.366,16			
23/7/2008 23:59:57	28.483.391,50	93.313,80	20.416.895,03	66.887,33	99,9914%	1.123,61	24.489,78			
24/7/2008 23:59:18	28.571.354,46	87.962,96	20.479.946,88	63.051,85	99,9914%	1.059,18	25.548,95			
25/7/2008 23:59:20	28.673.538,59	102.184,13	20.553.192,46	73.245,59	99,9914%	1.230,42	26.779,38			
26/7/2008 23:59:22	28.774.267,55	108.729,95	20.626.394,88	72.202,51	99,9914%	1.212,94	27.992,27			
27/7/2008 23:59:24	28.878.134,56	103.867,01	20.699.846,85	74.451,87	99,9914%	1.250,68	29.242,96			
28/7/2008 23:59:58	28.968.445,46	90.310,90	20.764.581,71	64.734,86	99,9914%	1.087,45	30.330,41			
29/7/2008 23:59:37	29.059.404,58	90.959,12	20.829.781,20	65.199,50	99,9914%	1.095,26	31.425,67			
30/7/2008 23:59:39	29.164.772,17	105.367,59	20.905.308,69	75.527,49	99,9914%	1.268,75	32.694,42			
31/7/2008 23:59:41	29.271.383,76	106.611,59	20.981.727,88	76.419,19	99,9914%	1.283,73	33.978,15			
1/8/2008 23:59:42	29.375.015,89	103.632,13	21.056.011,39	74.283,51	99,9914%	1.247,86	35.226,01			
2/8/2008 23:59:44	29.481.953,42	106.937,54	21.132.664,21	76.652,83	99,9914%	1.287,66	36.513,66			
3/8/2008 23:59:08	29.570.881,26	88.927,84	21.196.407,69	63.743,48	99,9914%	1.070,80	37.584,46			
4/8/2008 23:59:39	29.674.826,29	103.945,02	21.270.915,48	74.507,79	99,9914%	1.251,62	38.836,08			
5/8/2008 23:59:39	29.778.245,58	103.419,29	21.345.046,43	74.130,95	99,9914%	1.245,29	40.081,38			
6/8/2008 23:59:42	29.884.735,58	106.490,01	21.421.378,47	76.332,04	99,9914%	1.282,27	41.363,65			
7/8/2008 23:59:00	29.970.950,08	86.214,49	21.483.177,01	61.798,55	99,9914%	1.038,13	42.401,77			
8/8/2008 23:59:22	30.068.520,82	97.570,74	21.553.115,72	69.938,71	97,4361%	1.144,85	43.546,62			
9/8/2008 23:59:17	30.171.416,07	102.895,25	21.626.871,04	73.755,32	97,4361%	1.207,32	44.753,94			
10/8/2008 23:59:55	30.271.477,53	100.061,46	21.698.595,09	71.724,05	97,4361%	1.174,07	45.928,01			
11/8/2008 23:59:27	30.359.051,68	87.674,15	21.761.368,24	62.773,15	97,4361%	1.027,55	46.955,56			
12/8/2008 23:59:53	30.432.674,75	73.623,07	21.814.141,26	52.773,01	97,4361%	863,86	47.819,41			
13/8/2008 23:59:09	30.518.777,68	86.102,93	21.875.859,84	61.718,58	97,4361%	1.010,29	48.829,70			
14/8/2008 23:59:34	30.605.245,51	86.467,83	21.937.839,98	61.980,14	97,4361%	1.014,57	49.844,27			
15/8/2008 23:59:36	30.699.094,71	93.849,20	22.005.111,09	67.271,10	97,4361%	1.101,18	50.945,45			
16/8/2008 23:59:38	30.800.435,13	101.340,42	22.077.751,90	72.640,81	97,4361%	1.189,08	52.134,53			
17/8/2008 23:59:41	30.902.568,51	102.133,38	22.150.961,10	73.209,20	97,4361%	1.198,38	53.332,91			
18/8/2008 23:59:43	31.004.420,04	101.851,53	22.223.968,28	73.007,18	97,4361%	1.195,07	54.527,98			
19/8/2008 23:59:45	31.106.769,85	101.349,82	22.286.615,84	72.647,55	97,4361%	1.189,19	55.717,17			
20/8/2008 23:59:47	31.207.418,13	101.648,27	22.368.477,31	72.961,48	97,4361%	1.192,69	56.909,86			
21/8/2008 23:59:49	31.311.889,15	104.471,03	22.444.362,15	74.884,83	97,4361%	1.225,81	58.135,67			
22/8/2008 23:59:52	31.417.751,00	105.861,84	22.520.243,91	75.881,77	97,4361%	1.242,13	59.377,79			
23/8/2008 23:59:54	31.525.236,68	107.485,69	22.597.289,65	77.045,74	97,4361%	1.261,18	60.638,98			
24/8/2008 23:59:56	31.630.773,41	105.536,73	22.672.938,38	75.648,73	97,4361%	1.238,31	61.877,29			
25/8/2008 23:59:58	31.732.769,26	101.995,84	22.746.049,00	73.110,62	97,4361%	1.196,77	63.074,06			
26/8/08 23:59	31.834.814,51	102.045,25	22.819.195,04	73.146,04	97,4361%	1.197,35	64.271,40			
27/8/08 23:59	31.918.674,85	83.860,34	22.879.306,13	60.111,09	97,4361%	983,97	65.255,38			
28/8/08 23:59	32.011.933,69	93.258,84	22.946.154,07	66.847,94	97,4361%	1.094,25	66.349,63			
29/8/2008 23:59:11	32.110.021,44	98.087,74	23.016.463,37	70.309,30	97,4361%	1.150,91	67.500,54			
30/8/2008 23:59:13	32.216.590,88	106.569,44	23.092.852,34	76.388,98	97,4361%	1.250,43	68.750,97			
31/8/2008 23:59:15	32.321.199,24	104.608,36	23.167.835,61	74.983,27	97,4361%	1.227,42	69.978,39			
1/9/2008 23:59:53	32.424.343,67	103.144,43	23.241.769,54	73.933,93	97,4361%	1.210,24	71.188,64			
2/9/2008 23:59:55	32.526.542,62	102.198,96	23.315.025,75	73.256,21	97,4361%	1.199,15	72.387,79			
3/9/2008 23:59:57	32.626.430,16	99.887,53	23.386.625,14	71.599,38	97,4361%	1.172,03	73.559,82			
4/9/2008 23:59:59	32.725.254,19	98.824,03	23.457.462,20	70.837,07	97,4361%	1.159,55	74.719,37			
5/9/2008 23:59:43	32.823.598,57	98.344,38	23.527.955,45	70.493,25	97,4361%	1.153,92	75.873,29			
6/9/2008 23:59:44	32.925.849,29	102.250,72	23.601.248,77	73.293,32	97,4361%	1.199,76	77.073,05			
7/9/2008 23:59:46	33.028.961,48	103.112,20	23.675.159,59	73.910,82	97,4361%	1.209,87	78.282,92			
8/9/2008 23:59:30	33.127.347,41	98.385,93	23.745.682,62	70.523,03	97,4361%	1.154,41	79.437,33			
9/9/2008 23:59:46	33.230.318,07	102.970,66	23.819.491,99	73.809,37	97,4361%	1.208,21	80.645,53			
10/9/2008 23:59:49	33.331.047,09	100.729,02	23.891.694,56	72.202,56	97,4361%	1.181,90	81.827,43			
11/9/2008 23:59:51	33.430.467,40	99.420,31	23.962.959,03	71.264,47	97,4361%	1.166,55	82.993,98			
12/9/2008 23:59:53	33.529.188,96	98.721,56	24.033.722,65	70.763,62	97,4361%	1.158,35	84.152,33			
13/9/2008 23:59:56	33.637.635,69	108.446,73	24.111.457,26	77.734,62	97,4361%	1.272,46	85.424,79			
14/9/2008 23:59:58	33.747.580,22	109.944,53	24.190.265,50	78.808,24	97,4361%	1.290,03	86.714,82			
15/9/2008 23:59:01	33.853.943,60	106.363,38	24.266.506,77	76.241,27	97,4361%	1.248,01	87.962,83			
16/9/08 23:59	33.954.845,26	100.901,66	24.338.833,08	72.326,31	97,4361%	1.183,93	89.146,76	67.790		
17/9/08 23:59	34.051.405,74	96.560,48	24.408.047,64	69.214,56	97,4361%	1.132,99	90.279,75			
18/9/08 23:59	34.146.081,07	94.675,33	24.475.910,91	67.863,28	97,4361%	1.110,87	91.390,63			
19/9/08 23:59	34.242.620,61	96.539,53	24.545.110,45	69.199,54	97,4361%	1.132,75	92.523,37			
20/9/08 23:59	34.339.465,40	96.844,80	24.614.528,80	69.418,35	97,4361%	1.136,33	93.659,70			
21/9/08 23:59	34.437.516,33	98.050,93	24.684.811,71	70.282,91	97,4361%	1.150,48	94.810,18			
22/9/08 23:59	34.532.023,43	94.507,10	24.752.554,39	67.742,69	97,4361%	1.108,90	95.919,08			
23/9/2										

Date	Accumulated Methane Flow	Daily Methane Flow	Accumulated Methane Mass (Flow x Density)	Daily Methane Mass	Flare Efficiency	CO2e Daily	CO2e Accumulated	Electric energy	LGP consumption	Social workmanships
	Nm3	Nm3	Kg	Kg	%	Ton	Ton	Kwh	Kg	R\$
1/10/2008 23:59:11	35.428.819,72	104.438,79	25.395.377,97	74.861,72	97,4361%	1.225,43	106.441,63	87.299		
2/10/2008 23:59:39	35.506.663,23	77.843,51	25.451.176,20	55.798,23	97,4361%	913,38	107.355,00			
3/10/2008 23:59:41	35.608.520,86	101.857,63	25.524.187,75	73.011,55	97,4361%	1.195,15	108.550,15			
4/10/2008 23:59:43	35.711.635,82	103.114,96	25.598.100,56	73.912,81	97,4361%	1.209,90	109.760,04			
5/10/2008 23:59:37	35.814.164,38	102.528,56	25.671.593,03	73.492,47	97,4361%	1.203,02	110.963,06			
6/10/2008 23:59:56	35.920.833,94	106.669,56	25.748.053,76	76.460,74	97,4361%	1.251,61	112.214,67			
7/10/2008 23:59:58	36.027.442,59	106.608,65	25.824.470,85	76.417,08	97,4361%	1.250,89	113.465,56			
8/10/2008 23:59:31	36.130.560,32	103.117,73	25.898.385,64	73.914,79	97,4361%	1.209,93	114.675,49			
9/10/2008 23:59:13	36.238.204,18	107.643,87	25.975.544,76	77.159,12	97,4361%	1.263,04	115.938,53			
10/10/2008 23:59	36.339.534,54	101.330,35	26.048.178,35	72.633,60	97,4361%	1.188,96	117.127,49			
11/10/2008 23:59	36.443.028,02	103.493,48	26.122.362,48	74.184,13	97,4361%	1.214,34	118.341,83			
12/10/2008 23:59	36.534.771,50	91.743,49	26.188.124,21	65.761,73	97,4361%	1.076,47	119.418,30			
13/10/2008 23:59	36.631.010,19	96.238,69	26.257.108,10	68.983,89	97,4361%	1.129,22	120.547,51			
14/10/2008 23:59	36.697.659,98	96.649,79	26.304.882,67	47.774,57	97,4361%	782,03	121.329,55			
15/10/2008 23:59	36.795.745,41	98.085,44	26.375.190,31	70.307,64	97,4361%	1.150,88	122.480,43			
16/10/2008 23:59	36.795.745,41	0,00	26.375.190,31	0,0000%	0,0000%	0,00	122.480,43			
17/10/2008 23:59	36.922.205,55	126.460,14	26.465.836,94	90.646,63	97,4361%	1.483,82	123.964,25			
18/10/2008 23:59	37.027.777,23	105.571,68	26.541.510,72	75.673,78	97,4361%	1.238,72	125.202,98			
19/10/2008 23:59	37.122.679,27	94.902,04	26.609.536,50	68.025,79	97,4361%	1.113,53	126.316,51			
20/10/2008 23:59	37.222.406,39	99.727,12	26.681.020,90	71.484,40	97,4361%	1.170,15	127.486,65			
21/10/2008 23:59	37.323.416,61	101.010,21	26.753.425,02	72.404,12	97,4361%	1.185,20	128.671,86			
22/10/2008 23:59	37.413.470,60	90.053,99	26.817.975,72	64.550,70	97,4361%	1.056,65	129.728,50			
23/10/2008 23:59	37.517.175,30	103.704,70	26.892.311,25	74.335,53	97,4361%	1.216,82	130.945,32			
24/10/2008 23:59	37.619.876,66	102.701,37	26.965.927,59	73.616,34	97,4361%	1.205,05	132.150,37			
25/10/2008 23:59	37.713.816,07	93.939,41	27.033.263,36	67.335,77	97,4361%	1.102,24	133.252,60			
26/10/2008 23:59	37.815.622,40	101.806,33	27.106.238,13	72.974,77	97,4361%	1.194,54	134.447,15			
27/10/2008 23:59	37.915.955,87	100.333,48	27.178.157,17	71.919,04	97,4361%	1.177,26	135.624,41			
28/10/2008 23:57	38.015.084,18	99.128,31	27.249.212,34	71.055,17	97,4361%	1.163,12	136.787,53			
29/10/2008 23:59	38.112.923,54	97.839,36	27.319.343,59	70.131,25	97,4361%	1.148,00	137.935,53			
30/10/2008 23:59	38.212.572,03	99.648,49	27.390.771,63	71.428,04	97,4361%	1.169,22	139.104,75			
31/10/2008 23:59	38.315.304,13	102.732,10	27.464.410,00	73.638,37	97,4361%	1.205,41	140.310,16			
1/11/2008 23:59:53	38.416.660,92	101.356,79	27.537.062,55	72.652,55	97,4361%	1.189,27	141.499,43			
2/11/2008 23:59:55	38.519.297,35	102.636,42	27.610.632,34	73.569,79	97,4361%	1.204,28	142.703,71			
3/11/2008 23:59:19	38.616.335,82	97.038,48	27.680.189,52	69.557,18	97,4361%	1.138,60	143.842,31			
4/11/2008 23:59:22	38.717.850,80	101.514,98	27.752.955,46	72.765,94	97,4361%	1.191,12	145.033,44			
5/11/2008 23:59:25	38.819.933,89	102.083,08	27.826.128,51	73.173,15	97,4361%	1.197,79	146.231,23			
6/11/2008 23:59:21	38.918.285,20	98.351,32	27.896.626,83	70.498,22	97,4361%	1.154,00	147.385,23			
7/11/2008 23:59:23	39.023.016,57	104.731,37	27.971.698,28	75.071,45	97,4361%	1.228,86	148.614,09			
8/11/2008 23:59:39	39.128.193,79	105.177,21	28.047.089,31	75.391,03	97,4361%	1.234,10	149.849,19			
9/11/2008 23:59:41	39.236.162,68	107.968,90	28.124.481,41	77.392,11	97,4361%	1.266,85	151.115,04			
10/11/2008 23:59:15	39.334.659,55	98.496,86	28.195.083,96	70.602,55	97,4361%	1.155,71	152.270,75			
11/11/2008 23:59:17	39.430.083,43	95.423,88	28.263.483,80	68.399,84	97,4361%	1.119,66	153.390,41			
12/11/2008 23:59:10	39.526.564,22	96.480,79	28.332.641,23	69.157,43	97,4361%	1.132,06	154.522,47			
13/11/2008 23:59:13	39.626.016,68	99.452,46	28.403.928,75	71.287,52	97,4361%	1.166,92	155.689,39			
14/11/2008 23:59:27	39.714.623,87	88.607,19	28.467.442,39	63.513,63	97,4361%	1.039,67	156.729,06			
15/11/2008 23:59:09	39.754.000,96	39.377,09	28.495.667,89	28.225,50	97,4361%	462,03	157.191,09			
16/11/2008 23:59:09	39.818.241,67	64.240,71	28.541.715,63	46.047,74	97,4361%	753,77	157.944,86			
17/11/2008 23:59:57	39.917.955,71	99.714,05	28.613.190,66	71.475,03	97,4361%	1.169,99	159.114,85			
18/11/2008 23:59:46	40.014.801,96	96.846,25	28.682.610,04	69.419,39	99,9889%	1.166,12	160.280,97			
19/11/2008 23:59:34	40.109.393,73	94.591,77	28.750.413,42	67.803,38	99,9889%	1.138,97	161.419,94			
20/11/2008 23:59:41	40.208.028,83	98.635,11	28.821.115,07	70.701,64	99,9889%	1.187,66	162.607,60			
21/11/2008 23:59:34	40.309.167,54	101.138,71	28.893.611,29	72.496,22	99,9889%	1.217,80	163.825,40			
22/11/2008 23:59:57	40.414.806,56	105.639,03	28.969.333,34	75.722,05	99,9889%	1.271,99	165.097,39			
23/11/2008 23:59:46	40.508.097,65	93.291,09	29.036.204,40	66.871,05	99,9889%	1.123,31	166.220,70			
24/11/2008 23:59:58	40.609.839,69	101.742,04	29.109.133,09	72.928,70	99,9889%	1.225,07	167.445,76			
25/11/2008 23:59:01	40.715.870,75	106.031,06	29.185.136,15	76.003,06	99,9889%	1.276,71	168.722,47			
26/11/2008 23:59:46	40.821.370,09	105.499,34	29.260.758,08	75.621,93	99,9889%	1.270,31	169.992,78			
27/11/2008 23:59:40	40.925.835,75	104.456,66	29.335.639,07	74.880,99	99,9889%	1.257,86	171.250,64			
28/11/2008 23:59:45	41.029.927,32	104.091,57	29.410.251,90	74.612,84	99,9889%	1.253,36	172.504,00			
29/11/2008 23:59:48	41.135.882,61	105.955,29	29.485.200,66	75.948,75	99,9889%	1.275,80	173.779,79			
30/11/2008 23:59:50	41.242.146,59	106.263,98	29.562.370,67	76.170,02	99,9889%	1.279,51	175.059,31			
1/12/2008 23:59:52	41.345.470,89	103.324,30	29.636.433,54	74.062,86	99,9889%	1.244,12	176.303,43			
2/12/2008 23:59:54	41.452.377,41	106.906,52	29.713.064,13	76.630,59	99,9889%	1.287,25	177.590,68			
3/12/2008 23:59:06	41.555.168,47	102.791,06	29.786.744,76	73.680,63	99,9889%	1.237,70	178.828,37			
4/12/2008 23:59:09	41.662.235,93	107.067,47	29.863.490,72	76.745,96	99,9889%	1.289,19	180.117,56			
5/12/2008 23:59:31	41.762.835,58	100.599,64	29.935.600,54	72.109,82	99,9889%	1.211,31	181.328,87			
6/12/2008 23:59:28	41.862.811,03	89.975,45	30.000.094,95	64.494,41	99,9889%	1.063,39	182.412,26			
7/12/2008 23:59:29	41.963.657,47	100.846,44	30.072.381,67	72.286,73	99,9889%	1.214,28	183.626,54			
8/12/2008 23:59:41	42.063.319,21	99.661,74	30.143.819,21	71.437,54	99,9889%	1.200,02	184.826,56			
9/12/2008 23:59:26	42.164.732,53	101.413,32	30.216.512,28	72.693,07	99,9889%	1.221,11	186.047,67			
10/12/2008 23:59:29	42.268.475,60	103.743,07	30.290.875,31	74.363,03	99,9889%	1.249,16	187.296,83			
11/12/2008 23:59:31	42.370.578,23	112.102,63	30.371.230,48	80.355,17	99,9889%	1.349,82	188.646,64			
12/12/2008 23:59:50	42.477.668,35	107.090,12	30.447.992,68	76.762,20	99,9889%	1.289,46	189.936,11			
13/12/2008 23:59:52	42.594.401,80	116.733,44	30.531.667,21	83.674,53	99,9889%	1.405,58	191.341,68			
14/12/2008 23:59:55	42.705.482,21	111.080,41	30.611.289,65	79.622,44	99,9889%	1.337,51	192.679,19			
15/12/2008 23:59:07	42.813.273,76	107.791,55	30.688.554,63	77.264,99	99,9889%	1.297,91	193.977,10			
16/12/2008 23:59:10	42.922.341,69	109.067,93	30.766.734,52	78.179,89	99,9889%	1.313,28	195.290,37			
17/12/2008 23:59:00	43.038.087,44	115.745,75	30.849.701,08	82.966,56	99,9889%	1.393,68	196.684,06			
18/12/2008 23:59:59	43.156.124,41	118.036,97	30.934.309,98	84.608,90	99,9889%	1.421,27	198.105,33			
19/12/2008 23:59:01	43.275.692,23	119.567,82	31.020.016,19	85.706,21	99,9889%	1.439,70	199.545,03			
20/12/2008 23:59:31	43.361.507,45	85.815,22	31.081.529,54	61.614,35	99,9889%	1.039,29	200.578,33			
21/12/2008 23:59:51	43.457.340,99	105.833,55	31.150.443,43	70.149,40	99,9889%	1.310,88	201.890,78			
22/12/2008 23:59:55	43.577.323,18	106.982,19	31.236.225,26	76.584,83	99,9889%	1.283,16	203.176,94			
23/12/2008 23:59:06	43.673.051,49	95.728,31	31.304.843,31	68.618,05	99,9889%	1.152,66	204.329,60			
24/12/2008 23:59:32	43.770.230,83	97.179,34	31.374.501,46	69.658,15	99,9889%	1.170,13	205.499,73			
25/12/2008 23:59:35	43.870.712,17	100.481,33	31.446.526,48	72.025,02	99,9889%	1.209,89	206.709,61			
26/12/2008 23:59:59	43.965.692,83	94.980,66	31.514.608,62	68.082,14	99,9889%	1.143,65	207.852,63			
27/12/2008 23:59:02	44.056.732,26	91.039,43	31.579.865,69	65.257,06	99,9889%	1.096,20	208.948,46			
28/12/2008 23:59:46	44.142.209,70	85.477,49	31.641.135,92	61.270,23	99,9889%	1.029,23	209.978,69			
29/12/2008 23:59:16	44.229.303,59	86.592,99	31.703.667,15	62.070,50	99,9889%	1.042,50	210.998,20			
30/12/2008 23:59:59	44.326.990,31	88.186,72	31.773.586,66	70.380,24	99,9889%	1.182,26	212.203,61			
31/12/2008 23:59:51	44.427.869,81	102.879,80	31.845.897,08	72.310,43	99,9889%	1.214,68	213.418,29			

Date	Accumulated Methane Flow	Daily Methane Flow	Accumulated Methane Mass (Flow x Density)	Daily Methane Mass	Flare Efficiency	CO2e Daily	CO2e Accumulated	Electric energy	LGP consumption	Social workmanships
	Nm3	Nm3	Kg	Kg	%	Ton	Ton	Kwh	Kg	R\$
1/1/2009 23:59:54	44.533.643,81	105.774,00	31.921.715,88	75.818,80	99,9889%	1.273,61	214.691,91			
2/1/2009 23:59:57	44.635.975,97	102.332,16	31.995.067,58	73.351,69	99,9889%	1.232,17	215.924,08			
3/1/2009 23:59:55	44.731.499,02	95.523,05	32.063.538,60	68.470,92	99,9889%	1.150,18	217.074,26			
4/1/2009 23:59:57	44.829.152,79	97.653,77	32.133.536,72	69.998,22	99,9889%	1.175,84	218.250,10			
5/1/2009 23:59:00	44.931.475,59	102.322,80	32.206.881,70	73.344,98	99,9889%	1.232,06	219.482,16			
6/1/2009 23:59:50	45.029.035,15	97.559,57	32.276.812,40	69.930,70	99,9889%	1.174,71	220.656,87			
7/1/2009 23:59:53	45.131.767,90	102.732,75	32.350.451,23	73.638,84	99,9889%	1.237,00	221.893,86			
8/1/2009 23:59:23	45.226.444,53	94.676,63	32.418.315,44	67.864,21	99,9889%	1.139,99	223.033,85			
9/1/2009 23:59:25	45.320.837,93	94.393,40	32.485.976,63	67.661,19	99,9889%	1.136,58	224.170,44			
10/1/2009 23:59:27	45.419.258,34	98.420,41	32.556.524,38	70.547,75	99,9889%	1.185,07	225.355,51			
11/1/2009 23:59:30	45.517.704,83	98.446,49	32.627.090,83	70.566,44	99,9889%	1.185,38	226.540,89			
12/1/2009 23:59:57	45.615.727,25	98.022,41	32.697.353,29	70.262,47	99,9889%	1.180,28	227.721,17			
13/1/2009 23:59:37	45.714.855,95	99.128,70	32.768.408,74	71.055,45	99,9889%	1.193,60	228.914,77			
14/1/2009 23:59:19	45.806.432,61	91.576,66	32.834.050,89	65.542,15	99,9889%	1.102,67	230.017,43			
15/1/2009 23:59:14	45.910.509,18	104.076,57	32.908.652,98	74.602,09	99,9889%	1.253,18	231.270,61			
16/1/2009 23:59:54	46.002.922,93	92.413,75	32.974.895,16	66.242,18	99,9889%	1.112,75	232.383,36			
17/1/2009 23:59:56	46.113.082,37	110.159,44	33.053.857,45	78.962,29	99,9889%	1.326,42	233.709,77			
18/1/2009 23:59:58	46.222.643,52	109.561,15	33.132.390,88	78.533,43	99,9889%	1.319,22	235.028,99			
19/1/2009 23:59:30	46.327.044,43	104.400,91	33.207.225,45	74.834,58	99,9889%	1.257,08	236.286,07			
20/1/2009 23:59:10	46.435.326,09	108.281,65	33.284.841,74	77.616,29	99,9889%	1.303,81	237.589,88			
21/1/2009 23:59:03	46.541.919,05	106.592,96	33.361.247,57	76.405,83	99,9889%	1.283,48	238.873,36			
22/1/2009 23:59:05	46.654.952,02	113.032,97	33.442.269,61	81.022,03	99,9889%	1.361,02	240.234,37			
23/1/2009 23:59:06	46.770.720,56	115.768,54	33.525.252,50	82.982,89	99,9889%	1.393,96	241.628,33			
24/1/2009 23:59:08	46.888.154,18	117.433,62	33.609.428,92	84.176,42	99,9889%	1.414,01	243.042,34			
25/1/2009 23:59:46	47.002.754,90	114.600,80	33.691.574,77	82.145,86	99,9889%	1.379,90	244.422,24			
26/1/2009 23:59:14	47.087.693,76	84.938,78	33.752.458,89	60.884,12	99,9889%	1.022,74	245.444,98			
27/1/2009 23:59:38	47.201.684,27	113.990,51	33.834.167,28	81.708,40	99,9889%	1.372,55	246.817,52			
28/1/2009 23:59:34	47.314.239,63	112.555,36	33.914.846,97	80.679,68	99,993%	1.355,41	248.172,93			
29/1/2009 23:59:48	47.403.794,41	89.554,77	33.979.039,83	64.192,86	99,993%	1.078,43	249.251,37			
30/1/2009 23:59:17	47.512.479,91	108.685,51	34.056.945,60	77.905,77	99,993%	1.308,81	250.560,17			
31/1/2009 23:59:20	47.630.094,74	117.614,83	34.141.251,91	84.306,31	99,993%	1.416,34	251.976,51			
1/2/2009 23:59:22	47.743.855,18	113.760,45	34.222.795,40	81.543,49	99,993%	1.369,92	253.346,43			
2/2/2009 23:59:36	47.854.008,74	110.153,56	34.301.753,47	78.958,07	99,993%	1.326,49	254.672,92			
3/2/2009 23:59:17	47.971.279,24	117.270,50	34.385.812,96	84.059,49	99,993%	1.412,19	256.085,11			
4/2/2009 23:59:56	48.091.394,94	120.115,71	34.471.911,90	86.098,94	99,993%	1.446,45	257.531,56			
5/2/2009 23:59:41	48.209.847,89	119.452,95	34.556.818,97	84.907,07	99,993%	1.426,43	258.957,99			
6/2/2009 23:59:01	48.316.949,80	107.101,91	34.633.589,52	76.770,55	99,993%	1.289,74	260.247,73			
7/2/2009 23:59:30	48.434.658,52	117.708,72	34.717.983,23	84.373,61	99,993%	1.417,47	261.665,19			
8/2/2009 23:59:46	48.546.319,15	111.660,63	34.798.001,56	80.038,34	99,993%	1.344,63	263.009,83			
9/2/2009 23:59:49	48.662.747,64	116.428,50	34.881.457,51	83.455,95	99,993%	1.402,05	264.411,88			
10/2/2009 23:59:51	48.780.561,20	117.813,55	34.965.906,27	84.448,76	99,993%	1.418,73	265.830,61			
11/2/2009 23:59:50	48.883.362,52	102.801,32	35.039.594,25	73.687,98	99,993%	1.237,95	267.068,56			
12/2/2009 23:59:03	48.986.498,44	103.135,92	35.113.522,08	73.927,83	99,993%	1.241,98	268.310,53			
13/2/2009 23:59:06	49.088.408,47	101.911,03	35.186.571,91	73.049,83	99,993%	1.227,23	269.537,76			
14/2/2009 23:59:10	49.190.566,44	102.156,97	35.259.788,02	73.226,12	99,993%	1.230,19	270.767,95			
15/2/2009 23:59:13	49.294.156,38	103.589,94	35.334.051,30	74.253,27	99,993%	1.247,45	272.015,40			
16/2/2009 23:59:11	49.390.376,39	96.220,00	35.403.021,79	68.970,50	99,993%	1.158,70	273.174,10			
17/2/2009 23:59:48	49.475.718,87	85.342,49	35.464.195,29	61.173,50	99,993%	1.027,71	274.201,80			
18/2/2009 23:59:51	49.564.893,68	89.174,80	35.528.115,79	63.920,50	99,993%	1.073,86	275.275,66			
19/2/2009 23:59:54	49.654.148,51	89.254,83	35.592.093,65	63.977,86	99,993%	1.074,82	276.350,48			
20/2/2009 23:59:50	49.741.199,53	87.051,02	35.654.491,82	62.398,17	99,993%	1.048,28	277.398,76			
21/2/2009 23:59:53	49.837.032,96	95.833,33	35.723.185,15	68.693,33	99,993%	1.154,04	278.552,80			
22/2/2009 23:59:55	49.933.995,21	96.963,35	35.792.688,48	69.033,33	99,993%	1.167,65	279.720,45			
23/2/2009 23:59:57	50.036.587,15	102.590,94	35.866.225,67	73.537,19	99,993%	1.235,42	280.955,87			
24/2/2009 23:59:00	50.138.819,78	102.232,63	35.939.506,02	73.280,35	99,993%	1.231,10	282.186,97			
25/2/2009 23:59:02	50.245.708,87	106.889,10	36.016.124,12	76.618,10	99,993%	1.287,18	283.474,14			
26/2/2009 23:59:57	50.348.817,53	103.108,66	36.090.032,41	73.908,29	99,993%	1.241,65	284.715,79			
27/2/2009 23:59:48	50.453.411,49	104.593,96	36.165.005,36	74.972,95	99,993%	1.259,54	285.975,33			
28/2/2009 23:59:50	50.558.523,36	105.111,87	36.240.349,54	75.344,19	99,993%	1.265,77	287.241,10			
1/3/2009 23:59:53	50.662.022,93	103.499,58	36.314.538,04	74.188,50	99,993%	1.246,36	288.487,46			
2/3/2009 23:59:18	50.763.985,38	101.962,45	36.387.624,72	73.086,68	99,993%	1.227,85	289.715,31			
3/3/2009 23:59:14	50.866.857,43	102.872,05	36.461.363,41	73.738,68	99,993%	1.238,80	290.954,11			
4/3/2009 23:59:15	50.971.072,56	104.215,13	36.536.064,81	74.701,40	99,993%	1.254,97	292.209,09			
5/3/2009 23:59:17	51.074.203,48	103.130,92	36.609.989,06	73.924,25	99,993%	1.241,92	293.451,00			
6/3/2009 23:59:46	51.170.691,46	96.487,98	36.679.151,64	69.162,58	99,993%	1.161,92	294.612,93			
7/3/2009 23:59:02	51.271.318,77	100.627,31	36.751.281,29	72.129,66	99,993%	1.211,77	295.824,70			
8/3/2009 23:59:04	51.373.116,05	101.797,28	36.824.249,59	72.968,29	99,993%	1.225,86	297.050,56			
9/3/2009 23:59:05	51.477.519,75	104.403,70	36.899.086,16	74.836,57	99,993%	1.257,25	298.307,80			
10/3/2009 23:59:43	51.579.793,63	102.273,88	36.972.396,08	73.309,92	99,993%	1.231,60	299.539,40			
11/3/2009 23:59:14	51.687.708,54	107.914,91	37.049.749,48	77.353,40	99,993%	1.299,53	300.838,93			
12/3/2009 23:59:06	51.794.348,13	106.639,59	37.126.188,74	76.439,26	99,993%	1.284,17	302.123,10			
13/3/2009 23:59:19	51.905.326,71	110.978,58	37.205.738,19	79.549,45	99,993%	1.336,42	303.459,52			
14/3/2009 23:59:22	52.017.789,97	112.463,26	37.286.351,85	80.613,67	99,993%	1.354,30	304.813,82			
15/3/2009 23:59:25	52.125.729,95	107.939,98	37.363.723,23	77.371,38	99,993%	1.299,83	306.113,65			
16/3/2009 23:59:46	52.229.792,25	104.062,30	37.438.315,08	74.591,86	99,993%	1.253,13	307.366,78			
17/3/2009 23:59:41	52.339.318,02	109.525,77	37.516.823,16	78.508,07	99,993%	1.318,93	308.685,71			
18/3/2009 23:59:43	52.451.822,26	112.504,25	37.592.466,20	80.643,04	99,993%	1.354,79	310.040,50			
19/3/2009 23:59:45	52.563.036,21	111.213,94	37.677.184,35	79.718,15	99,993%	1.339,26	311.379,76			
20/3/2009 23:59:47	52.672.070,63	109.034,42	37.755.340,23	78.155,87	99,993%	1.313,01	312.692,77			
21/3/2009 23:59:49	52.785.116,49	113.045,85	37.836.371,50	81.031,27	99,993%	1.361,32	314.054,08			
22/3/2009 23:59:51	52.901.512,11	116.395,63	37.919.803,88	83.432,39	99,993%	1.401,65	315.455,74			
23/3/2009 23:59:09	53.002.147,22	100.395,10	37.991.939,12	72.135,24	99,993%	1.211,86	316.667,60			
24/3/2009 23:59:08	53.103.641,43	101.494,21	38.064.690,18	72.751,05	99,993%	1.222,21	317.889,81			
25/3/2009 23:59:10	53.205.881,99	102.240,56	38.137.976,21	73.286,04						

Date	Accumulated Methane Flow	Daily Methane Flow	Accumulated Methane Mass (Flow x Density)	Daily Methane Mass	Flare Efficiency	CO2e Daily	CO2e Accumulated	Electric energy	LGP consumption	Social workmanships
	Nm3	Nm3	Kg	Kg	%	Ton	Ton	Kwh	Kg	R\$
1/4/2009 23:59:31	53.841.198,62	98.748,21	38.593.371,17	70.782,72	99,9993%	1.189,14	326.771,59			
2/4/2009 23:59:08	53.938.506,37	97.307,75	38.663.121,36	69.750,19	99,9993%	1.171,80	327.943,39			
3/4/2009 23:59:10	54.045.572,75	107.066,39	38.739.866,55	76.745,19	99,9991%	1.289,31	329.232,69			
4/4/2009 23:59:11	54.157.803,64	112.230,89	38.820.313,65	80.447,10	99,9991%	1.361,50	330.584,19			
5/4/2009 23:59:51	54.261.472,21	103.668,57	38.894.623,28	74.309,63	99,9991%	1.248,39	331.832,58			
6/4/2009 23:59:55	54.361.548,22	100.076,00	38.965.357,76	71.734,48	99,9991%	1.206,13	333.037,71			
7/4/2009 23:59:57	54.470.722,24	109.174,02	39.044.613,70	78.255,94	99,9991%	1.314,69	334.352,40			
8/4/2009 23:59:59	54.569.497,84	98.775,60	39.115.416,05	70.802,35	99,9991%	1.189,47	335.541,87			
9/4/2009 23:59:01	54.667.056,92	97.559,08	39.185.346,40	69.930,35	99,9991%	1.174,82	336.716,69			
10/4/2009 23:59:03	54.773.020,05	105.963,13	39.261.300,77	75.954,37	99,9991%	1.276,02	337.992,71			
11/4/2009 23:59:05	54.876.159,80	103.139,75	39.336.231,34	73.930,57	99,9991%	1.242,02	339.234,73			
12/4/2009 23:59:08	54.977.468,90	101.309,11	39.407.849,71	72.618,37	99,9991%	1.219,98	340.454,71			
13/4/2009 23:59:11	55.080.169,21	102.700,31	39.481.465,29	73.615,58	99,9991%	1.236,73	341.691,44			
14/4/2009 23:59:28	55.185.127,14	104.957,93	39.556.699,13	75.233,84	99,9991%	1.263,92	342.955,36			
15/4/2009 23:59:30	55.293.278,58	108.151,44	39.634.222,09	77.522,95	99,9991%	1.302,37	344.257,73			
16/4/2009 23:59:32	55.406.126,18	112.847,60	39.715.111,25	80.889,16	99,9991%	1.358,93	345.616,66			
17/4/2009 23:59:36	55.517.040,87	110.914,69	39.794.614,90	79.503,65	99,9991%	1.335,65	346.952,31			
18/4/2009 23:59:39	55.631.557,79	114.516,92	39.876.700,62	82.085,73	99,9991%	1.379,03	348.331,33			
19/4/2009 23:59:40	55.745.685,19	114.127,40	39.958.507,14	81.806,52	99,9991%	1.374,34	349.705,67			
20/4/2009 23:59:42	55.862.888,06	107.202,87	40.036.350,16	76.843,02	99,9991%	1.290,95	350.996,62			
21/4/2009 23:59:44	55.961.923,35	109.935,30	40.113.434,98	78.004,82	99,9991%	1.311,81	352.309,43			
22/4/2009 23:59:46	56.069.528,43	107.705,07	40.190.637,98	77.203,00	99,9991%	1.297,00	353.605,43			
23/4/2009 23:59:48	56.172.589,06	103.060,63	40.264.511,84	73.873,86	99,9991%	1.241,07	354.846,50			
24/4/2009 23:59:49	56.277.928,82	105.339,76	40.340.019,38	75.507,54	99,9991%	1.268,52	356.115,02			
25/4/2009 23:59:52	56.378.872,40	100.943,58	40.412.375,74	72.356,36	99,9991%	1.215,58	357.330,59			
26/4/2009 23:59:55	56.479.771,51	100.899,11	40.484.700,22	72.324,48	99,9991%	1.215,04	358.545,63			
27/4/2009 23:59:58	56.577.441,11	97.669,61	40.554.709,79	70.009,57	99,9991%	1.176,15	359.721,78			
28/4/2009 23:59:43	56.668.471,92	91.030,81	40.619.960,67	65.250,88	99,9991%	1.096,20	360.817,99			
29/4/2009 17:49:44	56.769.941,58	71.469,65	40.671.190,12	51.229,45	99,9991%	860,65	361.678,64			
30/4/2009 23:59:40	56.834.045,71	94.104,13	40.738.643,97	67.453,84	99,9991%	1.133,21	362.811,85			
1/5/2009 23:59:43	56.933.326,60	99.280,88	40.809.808,50	71.164,54	99,9991%	1.195,55	364.007,40			
2/5/2009 23:59:45	57.036.320,02	102.993,42	40.883.634,19	73.825,68	99,9991%	1.240,26	365.247,66			
3/5/2009 23:59:48	57.139.220,21	102.900,20	40.957.393,05	73.758,86	99,9991%	1.239,14	366.486,80			
4/5/2009 23:59:00	57.243.831,04	104.610,83	41.032.378,09	74.985,04	99,9991%	1.259,74	367.746,54			
5/5/2009 23:59:03	57.356.961,19	113.130,15	41.113.469,78	81.091,69	99,9991%	1.362,33	369.108,87			
6/5/2009 23:59:05	57.474.153,16	117.191,97	41.197.472,99	84.003,20	99,9991%	1.411,24	370.520,11			
7/5/2009 23:59:08	57.592.109,24	117.955,08	41.282.023,90	84.559,32	99,9991%	1.420,44	371.940,55			
8/5/2009 23:59:08	57.710.921,93	118.812,59	41.367.188,84	85.164,94	99,9991%	1.430,76	373.371,31			
9/5/2009 23:59:11	57.830.994,44	120.072,51	41.453.256,82	86.067,97	99,9991%	1.445,93	374.817,24			
10/5/2009 23:59:02	57.926.536,63	95.542,19	41.521.741,46	68.484,64	99,9991%	1.150,53	375.967,77			
11/5/2009 23:59:56	58.045.397,14	118.860,51	41.606.940,67	85.199,22	99,9991%	1.431,33	377.399,10			
12/5/2009 23:59:40	58.164.585,85	119.188,71	41.692.375,14	85.434,47	99,9991%	1.435,29	378.834,39			
13/5/2009 23:59:42	58.284.947,02	120.361,17	41.778.650,03	86.274,89	99,9991%	1.449,41	380.283,80			
14/5/2009 23:59:03	58.396.792,44	111.845,42	41.858.820,82	80.170,80	99,9991%	1.346,86	381.630,65			
15/5/2009 23:59:57	58.519.159,14	122.366,69	41.946.533,27	87.712,45	99,9991%	1.473,56	383.104,21			
16/5/2009 23:59:01	58.642.456,55	123.297,41	42.034.912,85	88.379,58	99,9991%	1.484,76	384.588,97			
17/5/2009 23:59:04	58.765.223,56	122.767,02	42.122.912,25	87.999,40	99,9991%	1.478,38	386.067,35			
18/5/2009 23:59:03	58.881.217,17	115.993,61	42.206.056,47	83.144,22	99,9991%	1.396,81	387.464,16			
19/5/2009 23:59:05	58.999.295,25	118.078,08	42.290.694,84	84.638,37	99,9991%	1.421,91	388.886,07			
20/5/2009 23:59:07	59.120.327,95	121.032,69	42.377.451,07	86.756,23	99,9991%	1.457,49	390.343,56			
21/5/2009 23:59:46	59.226.876,49	106.548,54	42.453.825,06	76.373,99	99,9991%	1.283,07	391.626,63			
22/5/2009 23:59:49	59.345.231,09	118.354,60	42.538.661,64	84.836,58	99,9991%	1.425,24	393.051,88			
23/5/2009 23:59:53	59.464.415,64	119.184,55	42.624.083,13	85.431,49	99,9991%	1.435,24	394.487,11			
24/5/2009 23:59:41	59.580.605,20	116.189,56	42.707.377,81	83.284,68	99,9991%	1.399,17	395.886,28			
25/5/2009 23:59:18	59.694.612,86	114.007,66	42.789.098,50	81.720,69	99,9991%	1.372,90	397.259,18			
26/5/2009 23:59:20	59.807.079,87	112.467,01	42.869.714,85	80.616,35	99,9991%	1.354,34	398.613,52			
27/5/2009 23:59:22	59.923.009,74	115.929,87	42.952.813,38	83.098,53	99,9991%	1.396,04	400.009,56			
28/5/2009 23:59:23	60.036.487,11	113.477,37	43.034.153,96	81.340,58	99,9991%	1.366,51	401.376,07			
29/5/2009 23:59:25	60.151.717,74	115.230,63	43.116.751,28	82.597,32	99,9991%	1.387,62	402.763,69			
30/5/2009 23:59:27	60.264.855,54	113.137,80	43.197.848,45	81.097,18	99,9991%	1.362,42	404.126,11			
31/5/2009 23:59:28	60.378.369,12	113.513,57	43.279.214,98	81.366,53	99,9991%	1.366,95	405.493,06			
1/6/2009 23:59:25	60.491.348,16	112.979,04	43.360.198,36	80.983,38	99,9991%	1.360,51	406.853,57			
2/6/2009 23:59:04	60.590.817,25	99.469,09	43.431.497,80	71.299,45	99,9991%	1.197,82	408.051,39			
3/6/2009 23:59:07	60.700.267,40	109.450,15	43.509.951,67	78.453,87	99,9991%	1.318,01	409.369,40			
4/6/2009 23:59:09	60.812.008,34	111.740,94	43.590.047,57	80.095,90	99,9991%	1.345,60	410.715,00			
5/6/2009 23:59:17	60.930.796,56	118.788,23	43.675.194,98	85.147,40	99,9991%	1.430,46	412.145,46			
6/6/2009 23:59:20	61.051.450,15	120.653,58	43.761.679,47	86.484,49	99,9991%	1.452,93	413.598,39			
7/6/2009 23:59:23	61.172.490,72	121.040,57	43.846.441,35	86.761,88	99,9991%	1.457,59	415.055,98			
8/6/2009 23:59:26	61.294.877,41	122.386,69	43.936.168,13	87.726,78	99,9991%	1.473,80	416.529,77			
9/6/2009 23:59:38	61.416.900,37	122.022,96	44.023.634,18	87.466,06	99,9991%	1.469,42	417.999,19			
10/6/2009 23:59:17	61.539.667,47	122.767,10	44.111.633,64	87.999,45	99,9991%	1.478,38	419.477,57			
11/6/2009 23:59:50	61.657.790,80	118.123,33	44.196.304,44	84.670,80	99,9991%	1.422,46	420.900,02			
12/6/2009 23:59:53	61.788.097,61	130.306,82	44.289.708,37	93.403,93	99,9991%	1.569,17	422.469,20			
13/6/2009 23:59:55	61.916.374,99	128.277,38	44.381.657,59	91.949,22	99,9991%	1.544,73	424.013,93			
14/6/2009 23:59:58	62.042.729,65	126.354,66	44.472.228,61	90.571,02	99,9991%	1.521,58	425.535,51			
15/6/2009 23:59:01	62.168.103,13	125.373,48	44.562.096,32	89.867,71	99,9991%	1.509,76	427.045,27			
16/6/2009 23:59:48	62.292.544,13	124.441,00	44.651.295,63	89.199,31	99,9991%	1.498,53	428.543,81			
17/6/2009 23:59:32	62.414.864,18	122.320,05	44.738.974,65	87.679,01	99,9991%	1.472,99	430.016,80			
18/6/2009 23:59:35	62.538.147,87	123.283,69	44.827.344,39	88.369,75	99,9991%	1.484,60	431.501,40			
19/6/2009 23:59:48	62.657.287,64	119.139,77	44.912.743,78	85.399,39	99,9991%	1.434,70	432.936,10			
20/6/2009 23:59:04	62.781.817,05	124.529,41	45.002.006,46	89.262,68	99,9991%	1.499,60	434.435,70			
21/6/2009 23:59:06	62.906.233,46	124.416,41	45.091.188,14	89.181,68	99,9991%	1.498,24	435.933,94			
22/6/2009 23:59:24	63.023.034,13	116.800,67	45.174.910,87	83.722,72	99,9991%	1.406,53	437.340,46			
23/6/2009 23:59:25	63.140.281,56	117.247,43	45.259.953,82	84.042,95	99,9991%	1.411,9				

Date	Accumulated Methane Flow	Daily Methane Flow	Accumulated Methane Mass (Flow x Density)	Daily Methane Mass	Flare Efficiency	CO2e Daily	CO2e Accumulated	Electric energy	LGP consumption	Social workmanships
	Nm3	Nm3	Kg	Kg	%	Ton	Ton	Kwh	Kg	R\$
1/7/2009 23:59:41	64.131.121,41	113.288,75	45.969.187,83	81.205,38	99,9991%	1.364,24	450.684,20			
2/7/2009 23:59:07	64.243.844,80	112.723,39	46.049.987,95	80.800,13	99,9991%	1.357,43	452.041,63			
3/7/2009 23:59:09	64.354.850,87	111.006,06	46.129.557,10	79.569,15	99,9991%	1.336,75	453.378,38			
4/7/2009 23:59:11	64.472.160,13	117.309,27	46.213.644,38	84.087,28	99,9991%	1.412,65	454.791,03			
5/7/2009 23:59:19	64.590.243,11	118.082,97	46.298.286,26	84.641,88	99,9991%	1.421,97	456.213,00			
6/7/2009 23:59:31	64.698.984,42	108.741,31	46.376.232,03	77.945,77	99,9991%	1.309,48	457.522,46			
7/7/2009 23:59:09	64.797.692,49	98.708,07	46.446.985,98	70.753,95	99,9991%	1.188,66	458.711,13			
8/7/2009 23:59:19	64.898.354,67	100.662,18	46.519.140,63	72.154,65	99,9991%	1.212,19	459.923,32			
9/7/2009 23:59:22	65.010.076,24	111.721,56	46.599.222,65	80.082,02	99,9991%	1.345,37	461.268,69			
10/7/2009 23:59:25	65.128.153,31	118.077,07	46.683.860,29	84.637,64	99,9991%	1.421,90	462.690,59			
11/7/2009 23:59:28	65.254.450,07	126.296,76	46.774.389,81	90.529,52	99,9991%	1.520,88	464.211,47			
12/7/2009 23:59:46	65.380.068,36	125.618,30	46.864.433,00	90.043,19	99,9991%	1.512,71	465.724,18			
13/7/2009 23:59:48	65.505.324,22	125.255,85	46.954.216,40	89.783,40	99,9955%	1.508,29	467.232,47			
14/7/2009 23:59:50	65.627.485,31	122.161,09	47.041.781,47	87.565,07	99,9955%	1.471,03	468.703,50			
15/7/2009 23:59:52	65.752.112,46	124.627,15	47.131.114,21	89.332,74	99,9955%	1.500,72	470.204,22			
16/7/2009 23:59:50	65.871.029,44	118.916,98	47.216.353,90	85.239,69	99,9955%	1.431,96	471.636,19	164.760		R\$ 15.299,66
17/7/2009 23:59:18	65.989.031,19	118.001,75	47.300.937,56	84.583,66	99,9955%	1.420,94	473.057,13			
18/7/2009 23:59:20	66.107.185,47	118.154,28	47.385.630,54	84.692,99	99,9955%	1.422,78	474.479,91			
19/7/2009 23:59:23	66.226.011,34	118.825,88	47.470.804,93	85.174,39	99,9955%	1.430,87	475.910,77			
20/7/2009 23:59:27	66.343.693,22	117.681,87	47.555.159,30	84.354,37	99,9955%	1.417,09	477.327,86			
21/7/2009 23:59:30	66.461.175,09	120.000,00	47.641.175,29	86.016,00	99,9955%	1.445,00	478.777,00			
22/7/2009 23:59:15	66.566.759,38	103.066,16	47.715.053,12	73.877,83	99,9955%	1.241,09	480.013,96			
23/7/2009 23:59:17	66.683.266,09	116.506,72	47.798.565,14	83.512,02	99,9955%	1.402,94	481.416,89			
24/7/2009 23:59:20	66.807.799,84	124.533,74	47.887.830,92	89.265,79	99,9955%	1.499,60	482.916,49			
25/7/2009 23:59:22	66.936.710,98	128.911,14	47.980.234,43	92.403,51	99,9955%	1.552,31	484.468,80			
26/7/2009 23:59:35	67.045.451,71	108.740,73	48.058.179,78	77.945,35	99,9955%	1.309,42	485.778,22			
27/7/2009 23:59:59	67.166.688,09	121.236,39	48.145.082,03	86.902,24	99,9955%	1.459,89	487.238,12			
28/7/2009 23:59:03	67.285.518,49	119.830,39	48.230.259,65	85.177,63	99,9955%	1.430,92	488.669,04			
29/7/2009 23:59:29	67.406.787,94	120.269,45	48.317.185,59	86.925,94	99,9955%	1.460,29	490.129,33			
30/7/2009 23:59:44	67.521.568,39	114.780,45	48.399.460,22	82.274,63	99,9955%	1.382,15	491.511,48			
31/7/2009 23:59:46	67.648.100,06	126.531,68	48.490.158,13	90.697,91	99,9955%	1.523,66	493.035,13			
1/8/2009 23:59:48	67.780.855,59	132.756,52	48.585.317,28	95.159,16	99,9955%	1.598,60	494.633,74			
2/8/2009 23:59:50	67.914.210,68	133.355,09	48.680.906,21	95.588,93	99,9955%	1.605,82	496.239,56			
3/8/2009 23:59:41	68.046.694,81	132.484,13	48.775.870,84	94.964,63	99,9955%	1.595,33	497.834,89			
4/8/2009 23:59:13	68.175.600,76	128.806,95	48.868.198,95	92.328,11	99,9955%	1.551,04	499.385,93			
5/8/2009 23:59:11	68.306.189,10	130.688,34	48.961.876,35	93.677,40	99,9955%	1.573,71	500.959,64			
6/8/2009 23:59:25	68.434.137,63	127.948,53	49.053.589,85	91.713,51	99,9955%	1.540,72	502.500,36			
7/8/2009 23:59:27	68.562.167,49	128.029,86	49.145.351,66	91.771,80	99,9955%	1.541,70	504.042,06			
8/8/2009 23:59:29	68.691.340,39	129.172,90	49.237.952,79	92.591,13	99,9955%	1.555,46	505.597,52			
9/8/2009 23:59:15	68.817.573,90	126.233,51	49.328.436,97	90.484,18	99,9955%	1.520,07	507.117,58			
10/8/2009 23:59:36	68.932.985,75	115.411,85	49.411.164,18	82.727,21	99,9955%	1.389,75	508.507,34			
11/8/2009 23:59:38	69.042.955,28	109.969,53	49.489.990,34	78.826,16	99,9955%	1.324,22	509.831,56			
12/8/2009 23:59:40	69.152.705,02	109.749,74	49.568.658,96	78.668,61	99,9955%	1.321,57	511.153,13			
13/8/2009 23:59:35	69.266.192,57	113.487,56	49.650.006,94	81.347,88	99,9955%	1.366,58	512.519,72			
14/8/2009 23:59:46	69.380.157,35	113.964,78	49.731.696,79	81.689,96	99,9955%	1.372,33	513.892,04			
15/8/2009 23:59:49	69.500.668,02	120.510,67	49.818.078,84	86.382,05	99,9955%	1.451,15	515.343,20			
16/8/2009 23:59:52	69.620.762,48	120.094,46	49.904.162,55	86.083,71	99,9955%	1.446,14	516.789,34	160.394		R\$ 13.000,00
17/8/2009 23:59:55	69.733.081,53	112.319,05	49.984.672,84	80.510,29	99,9955%	1.352,51	518.141,85			
18/8/2009 23:59:39	69.835.624,37	102.542,84	50.058.175,55	73.502,71	99,9955%	1.234,79	519.376,64			
19/8/2009 23:59:38	69.950.541,46	114.917,09	50.140.548,12	82.372,57	99,9955%	1.383,80	520.760,44			
20/8/2009 23:59:40	70.069.817,76	119.276,30	50.226.045,37	85.497,25	99,9955%	1.436,29	522.196,73			
21/8/2009 23:59:42	70.198.593,61	128.775,85	50.318.351,90	92.306,53	99,9955%	1.550,68	523.747,41			
22/8/2009 23:59:44	70.324.377,73	125.784,13	50.408.513,96	90.162,05	99,9955%	1.514,65	525.262,06			
23/8/2009 23:59:46	70.452.011,72	127.633,99	50.500.002,00	91.488,04	99,9955%	1.536,93	526.798,99			
24/8/2009 23:59:48	70.578.481,66	126.469,94	50.590.655,66	90.653,66	99,9955%	1.522,91	528.321,90			
25/8/2009 23:59:50	70.702.918,26	124.436,59	50.679.851,81	89.196,15	99,9955%	1.498,43	529.820,33			
26/8/2009 23:59:48	70.826.767,58	123.849,32	50.768.627,00	88.775,19	99,9955%	1.491,36	531.311,69			
27/8/2009 23:59:50	70.951.475,05	124.707,48	50.858.017,32	89.390,32	99,9955%	1.501,69	532.813,38			
28/8/2009 23:59:52	71.075.664,63	124.189,58	50.947.036,41	89.019,09	99,9955%	1.495,45	534.308,83			
29/8/2009 23:59:54	71.198.744,31	123.079,67	51.035.259,92	88.223,51	99,9955%	1.482,09	535.790,92			
30/8/2009 23:59:57	71.317.870,51	119.125,21	51.120.649,58	85.389,66	99,9955%	1.434,48	537.225,40			
31/8/2009 23:59:53	71.439.025,73	121.155,22	51.207.493,64	86.844,06	99,9955%	1.458,91	538.684,32			
1/9/2009 23:59:55	71.562.707,84	123.682,12	51.296.148,98	88.655,34	99,9955%	1.489,34	540.173,66			
2/9/2009 23:59:57	71.687.809,74	125.101,90	51.385.822,02	89.673,04	99,9955%	1.506,44	541.680,10			
3/9/2009 23:59:59	71.812.170,31	124.360,57	51.474.963,68	89.141,65	99,9955%	1.497,51	543.177,61			
4/9/2009 23:59:15	71.935.425,20	123.254,89	51.563.312,78	88.349,11	99,9955%	1.484,20	544.661,81			
5/9/2009 23:59:17	72.063.698,42	128.273,22	51.655.259,03	91.946,24	99,9955%	1.544,63	546.206,44			
6/9/2009 23:59:31	72.194.882,52	131.184,11	51.749.291,79	94.032,77	99,9955%	1.579,68	547.786,12			
7/9/2009 23:59:30	72.325.103,91	130.221,39	51.842.634,48	93.342,69	99,9955%	1.568,09	549.354,20			
8/9/2009 23:59:08	72.453.390,88	128.286,97	51.934.590,58	91.956,10	99,9955%	1.544,79	550.898,99			
9/9/2009 23:59:08	72.587.440,59	134.049,71	52.030.677,41	96.086,83	99,9955%	1.614,19	552.513,18			
10/9/2009 23:59:11	72.722.988,63	135.548,04	52.127.838,25	97.160,84	99,9955%	1.632,23	554.145,41			
11/9/2009 23:59:14	72.858.735,48	135.746,85	52.225.141,59	97.303,34	99,9955%	1.634,62	555.780,03			
12/9/2009 23:59:17	72.993.050,82	134.315,34	52.321.418,83	96.277,23	99,9955%	1.617,38	557.397,42			
13/9/2009 23:59:20	73.108.817,09	115.766,28	52.404.400,09	82.981,27	99,9955%	1.394,02	558.791,44			
14/9/2009 13:13:20	73.182.337,33	73.520,24	52.457.089,40	52.699,31	99,9955%	885,31	559.676,75			
15/9/2009 23:59:16	73.212.074,74	29.737,40	52.478.415,17	21.315,77	99,9955%	358,09	560.034,84			
16/9/2009 23:59:17	73.341.968,04	129.893,30	52.571.522,69	93.107,52	99,9955%	1.564,14	561.598,97	158.638	180	
17/9/2009 23:59:20	73.473.212,69	131.244,65	52.665.598,85	94.076,16	99,9955%	1.580,41	563.179,38			
18/9/2009 23:59:23	73.598.112,68	124.900,00	52.755.127,17	89.528,32	99,9955%	1.504,01	564.683,39			
19/9/2009 23:59:28	73.713.591,06	115.478,37	52.837.902,07	82.774,90	99,9955%	1.390,56	566.073,94			
20/9/2009 23:59:30	73.839.417,24	125.826,19	52.928.094,28	90.192,21	99,9955%	1.515,16	567.589,11			
21/9/2009 23:59:46	73.965.564,58	126.147,34	53.018.516,69	90.422,41	99,9955%	1.519,03	569.108,13			
22/9/2009 23:59:49	74.092.868,90	127.304,								

Date	Accumulated Methane Flow	Daily Methane Flow	Accumulated Methane Mass (Flow x Density)	Daily Methane Mass	Flare Efficiency	CO2e Daily	CO2e Accumulated	Electric energy	LGP consumption	Social workmanships
	Nm3	Nm3	Kg	Kg	%	Ton	Ton	Kwh	Kg	R\$
1/10/2009 23:59:05	75.169.209,48	126.887,00	53.881.289,36	90.952,60	99,9955%	1.527,93	583.602,06			
2/10/2009 23:59:08	75.288.609,12	119.399,64	53.966.875,02	85.585,66	99,9955%	1.437,77	585.039,84			
3/10/2009 23:59:06	75.413.641,40	125.032,28	54.056.498,15	89.623,14	99,9955%	1.505,60	586.545,44			
4/10/2009 23:59:08	75.540.261,42	126.620,02	54.147.259,38	90.761,23	99,9955%	1.524,72	588.070,16			
5/10/2009 23:59:10	75.663.148,72	122.887,30	54.235.345,00	89.085,62	99,9955%	1.479,77	589.549,93			
6/10/2009 23:59:15	75.785.341,16	125.192,44	54.322.932,54	98.188,21	99,9955%	1.471,40	591.021,33			
7/10/2009 23:59:17	75.913.323,64	127.982,48	54.414.670,39	91.737,84	99,9955%	1.541,13	592.562,46			
8/10/2009 23:59:19	76.040.612,58	127.288,94	54.505.911,10	91.240,71	99,9955%	1.532,77	594.095,24			
9/10/2009 23:59:21	76.170.063,29	129.450,71	54.598.701,37	92.790,27	99,9955%	1.558,81	595.654,04			
10/10/2009 23:59:23	76.295.693,49	125.630,20	54.688.753,10	90.051,73	99,9955%	1.512,80	597.166,84			
11/10/2009 23:59:25	76.418.268,76	122.575,27	54.776.615,05	87.861,95	99,9955%	1.476,01	598.642,86			
12/10/2009 23:59:34	76.538.471,86	120.203,09	54.862.776,63	86.161,58	99,9955%	1.447,45	600.090,31			
13/10/2009 23:59:23	76.667.574,94	129.100,09	54.955.917,72	92.541,09	99,9955%	1.554,62	601.644,93			
14/10/2009 23:59:24	76.804.555,26	136.981,32	55.053.505,93	98.188,21	99,9955%	1.649,49	603.294,41			
15/10/2009 23:59:26	76.949.013,53	144.457,27	55.157.052,90	103.546,97	99,9955%	1.739,51	605.033,93			
16/10/2009 23:59:19	77.092.013,63	143.000,09	55.259.555,37	102.502,47	99,9955%	1.721,96	606.755,89			
17/10/2009 23:59:21	77.237.860,08	145.846,45	55.364.098,10	104.542,73	99,9955%	1.756,24	608.512,13			
18/10/2009 23:59:15	77.374.426,43	136.566,36	55.461.988,87	97.890,76	99,9955%	1.644,49	610.156,62			
19/10/2009 23:59:49	77.498.290,93	123.864,49	55.550.774,94	88.786,07	99,9955%	1.491,54	611.648,16			
20/10/2009 23:59:45	77.626.329,58	128.038,65	55.642.553,04	91.778,11	99,9955%	1.541,80	613.189,96			
21/10/2009 23:59:43	77.751.005,94	134.677,36	55.738.080,77	96.536,73	99,9974%	1.621,77	614.811,74			
22/10/2009 23:59:17	77.807.881,12	146.874,19	55.844.369,19	105.279,42	99,9974%	1.768,65	616.580,38			
23/10/2009 23:59:18	78.057.548,15	149.667,02	55.951.650,51	107.281,32	99,9974%	1.802,28	618.382,66			
24/10/2009 23:59:20	78.206.179,91	148.631,77	56.058.189,76	106.539,25	99,9974%	1.789,81	620.172,48			
25/10/2009 23:59:22	78.351.641,46	145.461,54	56.162.456,60	104.266,83	99,9974%	1.751,64	621.924,11			
26/10/2009 23:59:23	78.499.222,73	147.581,27	56.268.242,85	105.786,26	99,9974%	1.777,16	623.701,28			
27/10/2009 23:59:28	78.655.444,68	156.221,95	56.380.222,75	111.979,90	99,9974%	1.881,21	625.582,49			
28/10/2009 23:59:19	78.797.190,32	141.745,64	56.481.826,02	101.603,27	99,9974%	1.706,89	627.289,38			
29/10/2009 23:59:20	78.937.568,24	140.377,92	56.582.448,92	100.622,90	99,9974%	1.690,42	628.979,80			
30/10/2009 23:59:22	79.075.326,39	137.758,15	56.681.193,96	98.745,04	99,9974%	1.658,87	630.638,67			
31/10/2009 23:59:20	79.209.810,71	134.484,32	56.777.592,31	96.398,36	99,9974%	1.619,45	632.258,13			
1/11/2009 23:59:23	79.343.497,44	133.686,73	56.873.418,96	95.826,65	99,9974%	1.609,85	633.867,97			
2/11/2009 23:59:27	79.476.908,36	133.410,92	56.969.047,91	95.628,95	99,9974%	1.606,52	635.474,50			
3/11/2009 23:59:30	79.601.011,50	124.103,15	57.058.005,04	88.957,14	99,9974%	1.494,44	636.968,94			
4/11/2009 23:59:34	79.735.070,92	134.059,42	57.154.098,84	96.093,79	99,9974%	1.614,33	638.583,27			
5/11/2009 23:59:08	79.874.743,15	139.672,23	57.254.215,89	100.117,06	99,9974%	1.681,92	640.265,19			
6/11/2009 23:59:11	80.011.006,70	136.263,54	57.351.889,60	97.673,71	99,9974%	1.640,88	641.906,07			
7/11/2009 23:59:13	80.152.627,58	141.620,98	57.453.403,52	101.513,92	99,9974%	1.705,39	643.611,46			
8/11/2009 23:59:31	80.219.904,81	67.277,13	57.501.627,77	48.224,25	99,9974%	810,15	644.421,60			
9/11/2009 23:59:34	80.366.518,95	146.614,14	57.606.720,78	105.093,01	99,9974%	1.765,52	646.187,12			
10/11/2009 22:12:35	80.496.289,70	129.770,75	57.699.740,46	93.019,67	99,9974%	1.562,69	647.749,81			
11/11/2009 23:59:30	80.596.733,74	100.444,04	57.771.738,74	71.998,28	99,9974%	1.209,54	648.959,35			
12/11/2009 23:59:01	80.741.886,15	145.152,41	57.875.783,99	104.045,25	99,9974%	1.747,91	650.707,27			
13/11/2009 23:59:02	80.887.347,66	145.461,52	57.980.050,81	104.266,82	99,9974%	1.751,64	652.458,90			
14/11/2009 23:59:04	81.041.335,94	153.988,28	58.090.429,60	110.378,80	99,9974%	1.854,32	654.313,22			
15/11/2009 23:59:05	81.198.696,54	157.360,60	58.203.225,68	112.796,08	99,9974%	1.894,92	656.208,14			
16/11/2009 23:59:07	81.358.646,33	159.949,79	58.317.877,69	114.652,01	99,9974%	1.926,10	658.134,25			
17/11/2009 23:59:08	81.512.461,33	153.815,00	58.428.132,28	110.254,59	99,9974%	1.852,23	659.986,48			
18/11/2009 23:59:58	81.656.682,03	144.220,70	58.531.509,68	103.377,40	99,9974%	1.736,70	661.723,17			
19/11/2009 23:59:39	81.798.866,15	142.184,12	58.633.427,26	101.917,58	99,9974%	1.712,17	663.435,34			
20/11/2009 23:59:41	81.934.191,63	135.325,48	58.730.428,56	97.001,30	99,9974%	1.629,58	665.064,92			
21/11/2009 23:59:42	82.075.119,79	135.928,16	58.831.445,87	101.017,31	99,9974%	1.697,05	666.761,97			
22/11/2009 23:59:44	82.218.068,52	142.948,73	58.933.911,52	102.465,65	99,9974%	1.721,38	668.483,35			
23/11/2009 23:59:46	82.360.173,69	142.105,17	59.035.772,50	101.860,99	99,9974%	1.711,22	670.194,57			
24/11/2009 23:59:49	82.502.320,01	142.146,32	59.137.662,98	101.890,48	99,9974%	1.711,72	671.906,28			
25/11/2009 23:59:51	82.642.263,00	139.943,00	59.237.974,12	100.311,14	99,9974%	1.685,18	673.591,46			
26/11/2009 23:59:56	82.771.398,14	129.135,14	59.330.538,19	92.564,07	99,9974%	1.555,04	675.146,50			
27/11/2009 23:59:58	82.903.056,37	131.658,23	59.424.910,81	94.372,62	99,9974%	1.585,42	676.731,92			
28/11/2009 23:59:00	83.049.518,51	146.452,14	59.529.894,87	104.984,06	99,9974%	1.763,69	678.495,61			
29/11/2009 23:59:02	83.196.405,45	146.896,94	59.635.183,43	105.280,55	99,9974%	1.768,80	680.264,41			
30/11/2009 21:58:04	83.330.435,90	134.030,45	59.731.256,45	96.073,02	99,9974%	1.613,98	681.878,39			
1/12/2009 23:59:15	83.416.438,18	86.002,29	59.792.902,89	61.846,44	99,9974%	1.035,63	682.914,03			
2/12/2009 23:59:17	83.555.422,33	138.984,14	59.892.526,72	99.623,83	99,9974%	1.673,64	684.587,66			
3/12/2009 23:59:25	83.708.775,37	153.353,05	60.002.450,19	109.923,46	99,9974%	1.846,67	686.434,33			
4/12/2009 23:59:06	83.870.819,20	162.043,83	60.118.603,20	116.153,02	99,9974%	1.951,32	688.385,65			
5/12/2009 23:59:17	83.997.624,72	126.805,51	60.209.497,40	90.894,19	99,9974%	1.526,98	689.912,63			
6/12/2009 23:59:19	84.123.108,30	125.483,59	60.299.444,03	89.946,64	99,9974%	1.511,06	691.423,70			
7/12/2009 23:59:23	84.274.094,13	150.985,82	60.407.670,67	108.226,64	99,9974%	1.818,16	693.241,86			
8/12/2009 23:59:06	84.380.790,18	106.695,05	60.484.150,40	76.479,73	99,9974%	1.284,83	694.526,68			
9/12/2009 23:59:11	84.531.704,30	150.914,12	60.592.325,64	108.175,24	99,9974%	1.817,30	696.343,98			
10/12/2009 23:59:20	84.683.609,00	151.904,70	60.701.210,93	108.885,29	99,9974%	1.829,23	698.173,20			
11/12/2009 23:59:24	84.836.705,36	153.096,36	60.810.950,40	109.739,47	99,9974%	1.843,58	700.016,78			
12/12/2009 23:59:49	84.989.609,91	152.904,55	60.920.552,38	109.601,98	99,9974%	1.841,27	701.858,04			
13/12/2009 23:59:51	85.154.760,53	165.150,62	61.038.932,35	118.379,96	99,9974%	1.988,73	703.846,78			
14/12/2009 23:59:31	85.271.726,80	116.966,27	61.122.773,77	83.841,42	99,9974%	1.408,50	705.255,28			
15/12/2009 23:59:54	85.421.785,95	150.059,15	61.230.336,17	107.562,40	99,9974%	1.807,00	707.062,28			
16/12/2009 23:59:41	85.556.280,16	134.494,21	61.326.741,62	96.405,45	99,9974%	1.619,57	708.681,65			
17/12/2009 23:59:44	85.712.685,55	156.405,39	61.438.853,00	112.111,38	99,9974%	1.883,42	710.565,27			
18/12/2009 23:59:58	85.856.559,82	143.874,28	61.541.982,08	103.129,08	99,9974%	1.732,52	712.297,79			
19/12/2009 23:59:00	86.006.652,43	150.092,61	61.649.568,46	107.586,38	99,9974%	1.807,40	714.105,20			
20/12/2009 23:59:15	86.135.823,60	129.171,17	61.742.158,36	92.589,90	99,9974%	1.555,47	715.660,67			
21/12/2009 23:59:11	86.275.058,84	139.235,24	61.841.962,18	99.803,82	99,9974%	1.676,66	717.337,33			
22/12/2009 23:59:19	86.403.535,06	128.476,21	61.934.053,93	92.091,75	99,9974%	1.547,10	718.88			

5) ISO 9001 certificate



Certificado de Registro

SISTEMA DE GESTÃO DA QUALIDADE - ISO 9001:2015

Conferência por:

Essencis & Soluções Ambientais S.A.
Rodrigo da Silva Bastos Mendes, MSc. TS
Cadastrado
S&S 111111
02/02/2018
Brasil

Prêmio Certificado Número: 15 28818
representa o Sistema de Gestão da Qualidade registrado em 15/02/2018 e renovado automaticamente.

Seu objeto de certificação: **serviços de consultoria e gerenciamento ambiental, incluindo a implementação de sistemas de gestão da qualidade.**

Assinatura do:

Presidente da Essencis

Registro de certificação: 01052018 **Última revisão: 24/02/2019** **Data de validade: 24/02/2021**

BSI

Certificado nº: 15 28818

Informações	Atividade Certificada
Essencis & Soluções Ambientais S.A. Rodrigo da Silva Bastos Mendes, MSc. TS Cadastrado S&S 111111 02/02/2018 Brasil	Serviço de gerenciamento de resíduos sólidos e líquidos, incluindo a implementação de sistemas de gestão da qualidade.
Essencis & Soluções Ambientais S.A. Rodrigo da Silva Bastos Mendes, MSc. TS Cadastrado S&S 111111 02/02/2018 Brasil	Serviço de gerenciamento de resíduos sólidos e líquidos, incluindo a implementação de sistemas de gestão da qualidade.

Registro de certificação: 01052018 **Última revisão: 24/02/2019** **Data de validade: 24/02/2021**

BSI

6) ISO 14001 certificate



Certificado de Registro

SISTEMA DE GESTÃO AMBIENTAL - ISO 14001:2004

Conferência por:

Essencis & Soluções Ambientais S.A.
Rodrigo da Silva Bastos Mendes, MSc. TS
Cadastrado
S&S 111111
02/02/2018
Brasil

Prêmio Certificado Número: 15 28818
representa o Sistema de Gestão Ambiental registrado em 15/02/2018 e renovado automaticamente.

Seu objeto de certificação: **serviços de consultoria e gerenciamento ambiental, incluindo a implementação de sistemas de gestão da qualidade.**

Assinatura do:

Presidente da Essencis

Registro de certificação: 01052018 **Última revisão: 24/02/2019** **Data de validade: 24/02/2021**

BSI

Certificado nº: 15 28818

Informações	Atividade Certificada
Essencis & Soluções Ambientais S.A. Rodrigo da Silva Bastos Mendes, MSc. TS Cadastrado S&S 111111 02/02/2018 Brasil	Serviço de gerenciamento de resíduos sólidos e líquidos, incluindo a implementação de sistemas de gestão da qualidade.
Essencis & Soluções Ambientais S.A. Rodrigo da Silva Bastos Mendes, MSc. TS Cadastrado S&S 111111 02/02/2018 Brasil	Serviço de gerenciamento de resíduos sólidos e líquidos, incluindo a implementação de sistemas de gestão da qualidade.

Registro de certificação: 01052018 **Última revisão: 24/02/2019** **Data de validade: 24/02/2021**

BSI