



**Monitoring report form
(Version 05.1)**

Complete this form in accordance with the Attachment "Instructions for filling out the monitoring report form" at the end of this form.

MONITORING REPORT

Title of the project activity	Jincheng Sihe Coal Mine CMM Generation Project	
UNFCCC reference number of the project activity	1896	
Version number of the monitoring report	01.0	
Completion date of the monitoring report	29 September 2015	
Monitoring period number and duration of this monitoring period	Monitoring period 12# (01/01/2014-30/06/2014 ¹)	
Project participant(s)	Shanxi Jincheng Anthracite Mining Group Co., Ltd. (project owner); ICECAP Carbon Trading Ltd.;	
Host Party	China	
Sectoral scope(s)	Sectoral scopes 8: Mining/mineral production Sectoral scopes 10: Fugitive emissions from fuels (solid, oil and gas)	
Selected methodology(ies)	ACM0008 " <i>Consolidated methodology for coal bed methane and coal mine methane capture and use for power (electrical or motive) and heat and/or destruction by flaring</i> " (Version 03)	
Selected standardized baseline(s)	N/A	
Estimated amount of GHG emission reductions or net GHG removals by sinks for this monitoring period in the registered PDD	1,735,930tCO ₂ e	
Total amount of GHG emission reductions or net GHG removals by sinks achieved in this monitoring period	GHG emission reductions or net GHG removals by sinks reported up to 31 December 2012	GHG emission reductions or net GHG removals by sinks reported from 1 January 2013 onwards
	0	1,633,994 tCO ₂ e (MP12 01/01/2014-30/06/2014)

¹ Both the starting and end dates are included in this monitoring period.

SECTION A. Description of project activity

A.1. Purpose and general description of project activity

>>

Jincheng Sihe Coal Mine CMM Generation Project (hereafter the project) is utilizing the coal mine methane (CMM), that otherwise would be released to the atmosphere, to generate electricity and displace the electricity generated by North China power grid.

The project comprises of internal combined cycle combustion engines using the CMM as a fuel, as well as waste heat boilers and steam turbines for power generation. The gas extracted is pumped to the gas tank at the power plant and mixed, stirred, and dehydrated. The gas is delivered to the compressing station for compression and then injected to the gas engines for power generation. The waste heat from the gas engines is directed into the waste heat boiler to heat the steam which is driving the steam turbine to generate electricity. There are 4 power houses in the power plant. Each power house consists of 15 gas engines (of 1.8 MW each), 3 waste heat boilers (6 t/h), and 1 steam turbine (3 MW each). Thus, the total installed capacity of the power plant is 120 MW.

The project has been registered by the CDM Executive Board since 22/04/2009. The crediting period started on 22/04/2009 and is a fixed period of 10 years. The project started construction on 25/01/2007. After the completion of construction, the project started commissioning and received the inspection approval on 16/02/2009. The expected operational lifetime of the project activity is 25 years.

The start date of the twelfth monitoring period described in this monitoring report is 01/01/2014 and the end date is 30/06/2014. In this monitoring period, the achieved emission reductions of the project are 1,633,994tCO₂e.

A.2. Location of project activity

>>

This project is located within Sihe Coal Mine, located in Jiafeng Town, Qinshui County, Jincheng City, Shanxi Province of the People's Republic of China.

GPS coordinates of the project activity are as follows:

Longitude: +112.5194 (112°31'10" E);

Latitude: +35.5875 (35°35'15" N)

A.3. Parties and project participant(s)

Party involved ((host) indicates a host Party)	Private and/or public entity(ies) project participants (as applicable)	Indicate whether the Party involved wishes to be considered as project participant (yes/no)
China (host)	Shanxi Jincheng Anthracite Mining Group Co., Ltd.	No
United Kingdom of Great Britain and Northern Ireland	ICECAP Carbon Trading Ltd.	No

A.4. Reference of applied methodology and standardized baseline

>>

The approved consolidated methodology ACM0008 (Version 03): "*Consolidated methodology for coal bed methane and coal mine methane capture and use for power (electrical or motive) and heat and/or destruction by flaring*" is applied to the Project.

In accordance with the ACM0008 (Version 03), approved consolidated methodology ACM0002 (Version 06) “*Consolidated methodology for grid-connected electricity generation from renewable sources*” is adopted to calculate the emission factor of the North China Grid.

For more information, please refer to the link below:

<https://cdm.unfccc.int/methodologies/DB/YSD3FQ5WR3VPC9Q64CDTLXHFLVKKKU>

A.5. Crediting period of project activity

>>

The crediting period started on 22/04/2009 and a 10-year fixed crediting period is adopted.

A.6. Contact information of responsible persons/entities

>>

Project participant and/or responsible person/ entity	<input checked="" type="checkbox"/> Project participant <input type="checkbox"/> Responsible person/ entity for completing the CDM-MR-FORM
Organization name	Shanxi Jincheng Anthracite Mining Group Co., Ltd.
Street/P.O. Box	Beishidian
City	Jincheng
State/Region	Shanxi
Postcode	048006
Country	China
Telephone	86-356-3669561
Fax	86-356-3669562
E-mail	jmjtdm@163.com
Contact person	Zhang Shuhui

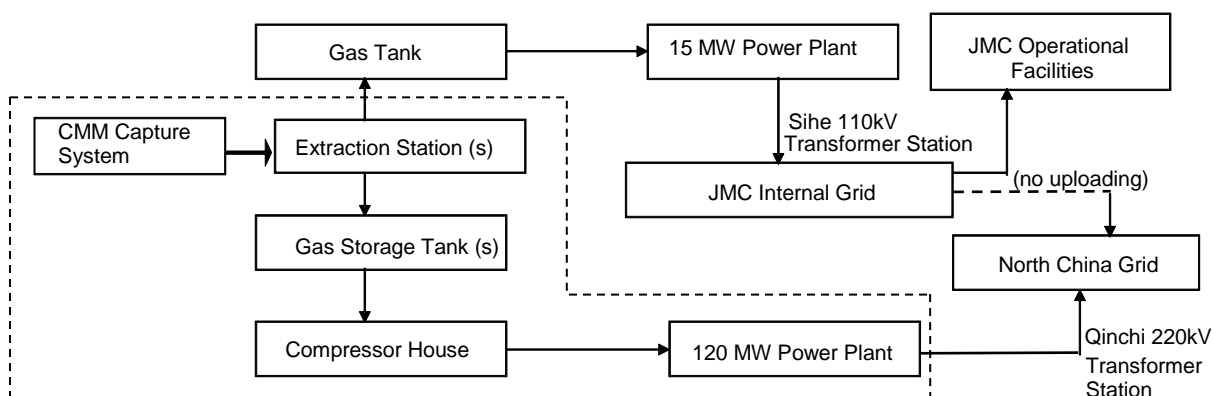
SECTION B. Implementation of project activity

B.1. Description of implemented registered project activity

>>

Combined cycle power generation technology is employed in the project which is composed of internal combustion engines using the CMM as fuel, waste heat boilers and steam turbines. There are four power houses in the power plant. Each power house consists of 15 gas engines (of 1.8 MW each), 3 waste heat boilers (6 t/h), and 1 steam turbine (3 MW). The flow diagram of the project activity is shown in Figure 1. (JMC is the acronym of Shanxi Jincheng Anthracite Mining Group Co., Ltd.)

Figure 1: Flow diagram of the power generation by the project.

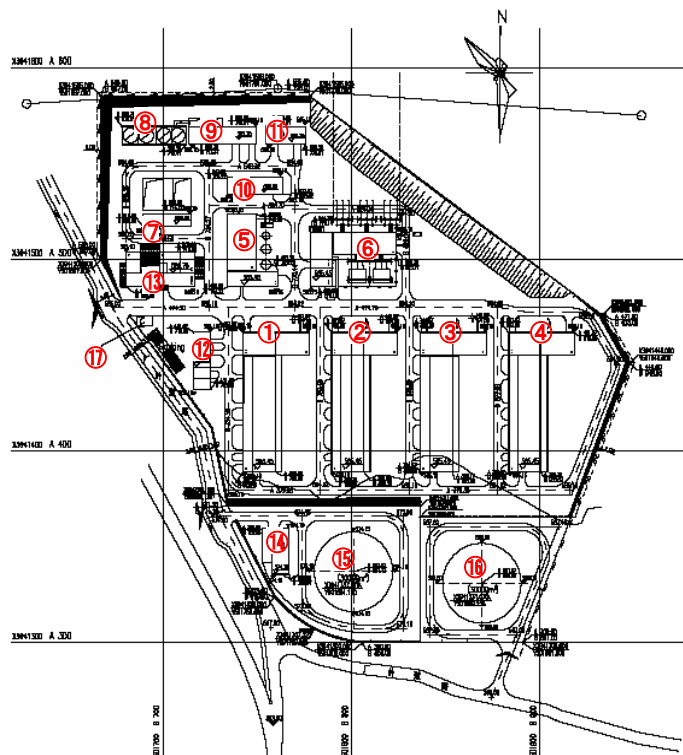


----- Flow diagram of the project activity

The CMM is captured by the capture system². The captured CMM is then pumped through the extraction stations to the gas storage tanks where it is mixed, stirred, and dehydrated. After that the gas is delivered to the compressing station for compression and then injected to the gas engines for power generation. The waste heat from the gas engines is led into the waste heat boiler to heat the steam which will drive the steam turbine to generate electricity.

The Figure 2 below illustrates the surface layout of the power generation part of this project activity.

Figure 2. Layout of the power generation facilities.



² Capture system in general refers to the drilling system as well as the gas collection pipeline.

1	No.1 power house	10	Maintenance room
2	No.2 power house	11	Material storage
3	No.3 power house	12	Heat supply station
4	No.4 power house	13	Administration building
5	Chemical water treating	14	CMM compressing station
6	220KV substation	15	No.1 gas storage tank
7	Comprehensive pump house	16	No.2 gas storage tank
8	Mechanical draft cooling tower	17	Gate office
9	Circulation water pump room		

The project was fully commissioned on February 16, 2009. All the four power houses were put into operation at the same time. The 120MW power plant has been operated normally and consistently with the project design. The power plant was operated by the Qinshui Jinmei Methane Power Generation Co., Ltd., a full investment subsidiary company of JMC. The previous name of the company was Sihe Coal Mine Methane Power Plant and the name changed to Qinshui Jinmei Methane Power Generation Co., Ltd. in January 2010. Despite the change in name, the company remains owned by Shanxi Jincheng Anthracite Mining Group Co., Ltd (JMC).

The Monitoring Plan and the “CDM Project Management and Operations Manual” for this project has been developed based on which the monitoring activities are carried out. The on-site assessment of the initial verification was conducted on August 5-7, 2009 and received positive outcome. The on-site assessment of the first periodic verification was conducted on January 9-10, 2010. The on-site assessment of the second periodic verification was conducted on August 11-13, 2010. The on-site assessment of the third and fourth periodic verification was conducted jointly on October 19-21, 2011. The on-site assessment of the fifth and sixth periodic verification was conducted jointly on April 11-13, 2012. The on-site assessment of the seventh and eighth periodic verification was conducted jointly on November 13-15, 2012. The on-site assessment of the ninth periodic verification was conducted on March 27-29, 2013. The on-site assessment of the tenth periodic verification was conducted on December 30-31, 2013. The on-site assessment of the eleventh periodic verification was conducted on January 19-20, 2015.

During this monitoring period (01/01/2014 to 30/06/2014), the 120MW power plant operated well and all the equipments and monitoring instruments had no malfunctions. The power plant had one scheduled outage due to the annual spring inspection. The annual spring inspection is mainly to inspect and test the operating equipments in order to remove any potential defects and prepare the equipments for the peak season in the summer. The inspection normally covers routine check, cleaning, fastening, preventive experiment for the equipments, protective equipment inspection, monitoring, control and communication test, etc. The whole power plant was shut down from 4:40 April 14 to 13:20 April 17, 2014. During the scheduled outage, the volume of gas consumption and power generation reduced to zero.

No special event which may impact the applicability of the methodology occurred during the monitoring period.

B.2. Post-registration changes

B.2.1. Temporary deviations from registered monitoring plan, applied methodology or applied standardized baseline

>>

Not applicable.

B.2.2. Corrections

>>

Not applicable.

B.2.3. Changes to start date of crediting period

>>

Not applicable.

B.2.4. Inclusion of a monitoring plan to the registered PDD that was not included at registration

>>

Not applicable.

B.2.5. Permanent changes from registered monitoring plan, applied methodology or applied standardized baseline

>>

The monitoring plan has been revised twice. The first revised monitoring plan was approved on 15/03/2011 and the second revised monitoring plan was approved on 07/07/2014. The present monitoring report has been prepared as per the second approved monitoring plan.

Please refer to the web-link below for further details on the approved revision to the monitoring plan.

<http://cdm.unfccc.int/Projects/DB/DNV-CUK1214826895.32/view>

B.2.6. Changes to project design of registered project activity

>>

Not applicable.

B.2.7. Types of changes specific to afforestation or reforestation project activity

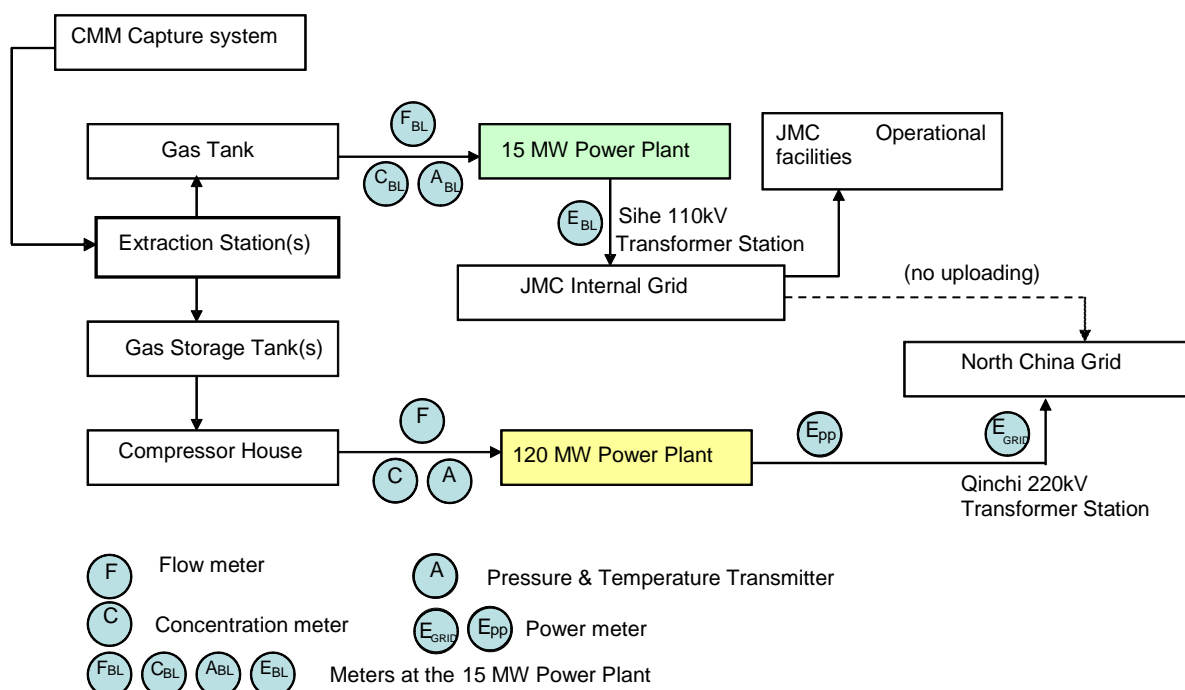
>>

Not applicable.

SECTION C. Description of monitoring system

>>

The Figure 3 below represents the diagram of flows and monitoring points of the new 120MW power plant and the existing 15MW experimental power plant. The Table 1 delineates all the monitoring meters, the corresponding parameters measured and the installed location in accordance with the requirements of the latest approved monitoring plan as of 07/07/2014. The Table 1 separately indicates the meters providing data used for calculation of emission reductions and other meters providing data not used for emission reduction calculation (e.g. used for cross-checking purposes).

Figure 3: Flow diagram and monitoring points at Sihe mining site**Table 1: Monitoring meters and parameters.**

Symbol	Description	Monitored parameter	Installed location
Main meters used for calculation of emission reductions			
F	Gas Flow Meters	MM _{ELEC}	120MW power plant
A	Pressure & Temperature Transmitters	MM _{ELEC}	120MW power plant
C	Concentration Meters	MM _{ELEC} & PC _{CH4,y}	120MW power plant
E _{GRID}	Power Meters (main and backup meter)	GEN _{1,y} GEN _{2,y}	Grid Company Qinchi 220kv transformer station
Monitoring meters not used for calculation of emission reductions			
E _{PP}	Power Meters (main and backup meter) (used for cross-checking)	GEN _{1,y} GEN _{2,y}	120MW power plant
F _{BL} , C _{BL} , A _{BL}	Gas Flow Meters, Concentration Meters, Pressure & Temperature Transmitters	MM _{BL,y}	15MW Power Plant
E _{BL}	Power Meters	GEN _{BL,y}	15MW Power Plant

Monitoring equipments have been installed on all monitoring sites, including:

- Compressor House of 120MW CMM Power Plant
- Central Controlling Room of 120MW CMM Power Plant
- 15MW CMM Power Plant

All instruments installed are in compliance with relevant national/sectoral standards and are calibrated and maintained in accordance with the manufacturers' instructions and relevant national/sectoral standards by the accredited third party and by the trained monitoring staff at each site, supervised by the site manager. The electricity meters are calibrated by authorized entities and inspected by the local grid company. All relevant records have been archived and will be kept for the longer of two years longer than the crediting period or two years after the last issuance of CERs.

The Table 2 indicates the main metering equipments that are used for calculation of emission reductions from the project (e.g., the meters installed at the 120MW power plant only). The number of installed meters is not including backup meters. More detailed information on the metering equipment listed in the Table 1 is provided in the Section D.

Table 2: Meters Installed at the Jincheng Sihe 120MW CMM Power Plant.

Type of metering equipment	Range	Accuracy level	Calibration frequency	No. of installed meters
Gas Flow Meter (differential pressure transmitter)	0 ~ 6.0KPa	0.20%	Annual	4
Pressure Transmitter	0 ~ 100KPa	0.20%	Annual	4
Temperature Transmitter	-200-500°C	$\pm(0.30+0.005 t)$	Annual	4
Concentration Meter (methane concentration analyzer)	0-100%	$\pm 2.0\%$	Annual	4
Power Meter	0-99999.999	0.2S	Annual	2

Data collection

Each monitoring spot is equipped with the monitoring system including all kinds of instruments (as listed in the tables above) and computer system, and also the 120MW power plant is equipped with DCS (distributed control system). The data of the monitoring instruments are generated, collected and archived automatically by DCS. A spreadsheet with the data of each hour is generated automatically and can be printed out daily. The operators on duty will record the data manually per hour for cross-checking.

Data collection procedures for MM_{ELEC} , $MM_{BL,y}$ and $PC_{CH4,y}$

The data collection procedures for MM_{ELEC} and $MM_{BL,y}$ are almost identical. The monitoring of $PC_{CH4,y}$ is integrated in the monitoring of MM_{ELEC} .

Gas mixture flow, methane concentration, gas pressure and gas temperature are continuously measured at each CMM monitoring spot using electronic equipment and archived in computer. Mass of methane is then calculated from those measurements. A spreadsheet is generated automatically to record the amount of methane, methane concentration, gas pressure and temperature values per hour. Also, these values are recorded manually per hour. The daily aggregation of methane can be obtained by the spreadsheet record or the manual record. These records are checked by the shift leader or the site manager and then copied for the CDM Office of JMC periodically. The Monitoring Team of the CDM Office check the records, sum up the amount of methane (MM_{ELEC} , $MM_{BL,y}$) respectively. $PC_{CH4,y}$, the concentration of methane in extracted gas is

measured, read and recorded continuously. The concentration data recorded at 11AM of the first day of each month has been presented on section D.2 for illustration purpose only. MM_{ELEC} is used in the emission reductions calculation. $MM_{BL,y}$ are not used in the emission reductions calculation.

Data collection procedures for $GEN_{1,y}$, $GEN_{2,y}$ and $GEN_{BL,y}$

$GEN_{1,y}$ and $GEN_{2,y}$ are continuously measured both in 120MW Power Plant and Grid Company by bidirectional electricity meters. The Power Plant's personnel on duty record the readings hourly and sum up the daily electricity amount. The record is then checked by the shift leader or site manager and copied for the CDM Office periodically. The settlement notices are issued by the Grid Company monthly. The Monitoring Team of the CDM Office check and sum up the electricity amount data from the Power Plant monthly to crosscheck the electricity amount from the settlement notices. The differences between them are mostly small line loss. The electricity amount from the settlement notices is more conservative and therefore used in the emission reductions calculation.

$GEN_{BL,y}$ is continuously measured in 15MW power station by electricity meter. The 15MW Power Station's personnel on duty record the electricity amount hourly and sum up the daily electricity amount. The record is then checked by the shift leader or site manager and copied for the CDM Office periodically. The Monitoring Team of the CDM Office checks and sum up the electricity data monthly. $GEN_{BL,y}$ is not used in the emission reductions calculation.

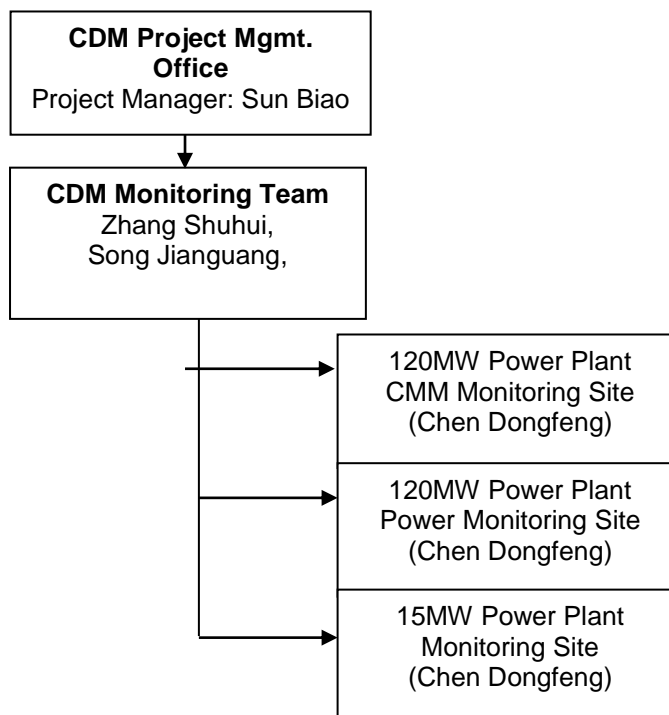
Data collection procedures for $PC_{NMHC,y}$ and CEF_{NMHC}

Samples of coal mine gas are taken annually, and analysed at a qualified laboratory. The testing result of NMHC is kept both in the 120MW power plant and the CDM Office. $PC_{NMHC,y}$ will not be used in the Emission reductions calculation if the NMHC concentration is less than 1%. CEF_{NMHC} will be monitored only if $PC_{NMHC,y} > 1\%$ (PDD, page 36).

All the data are properly kept by the site managers and the CDM Office and will be kept for at least 2 years after the end of the crediting period.

Organizational structure, roles and responsibilities

The JMC has established a CDM Project Management Office and appointed Ms. Sun Biao as the project manager, who oversees the Office and is responsible for the overall CDM monitoring activities at JMC, supervising the implementation of the Monitoring Plan, checking and reviewing related data, reviewing and issuing the monitoring report. The organization structure of the monitoring is presented in Figure 4 with indication of the names of the personnel responsible for monitoring activities.

Figure 4: Organizational Structure of Monitoring.

Under the CDM Project Management Office, a Monitoring Team, consisting of Zhang Shuhui and Song Jianguang has been established. The Monitoring team is responsible for coordinating the monitoring issues of each monitoring site, supervising the regular checking and maintenance of the related meters, data recording, data handling and report preparations. The monitoring staffs have all received specific technical training before assuming their responsibilities.

At each monitoring site, a monitoring group has been established, including a site manager and several monitoring staffs (see Figure 4):

- For the 120MW CMM Power Plant and the experimental 15MW CMM Power Plant, the site manager is Chen Dongfeng.

The monitoring group is responsible for operations, maintenance and calibration of the monitoring meters and timely and accurately recording the data in accordance with the “CDM Project Management and Operating Manual” for this project. Each site manager is responsible for regular checks of the data recorded in order to verify if the values are accurate and complete.

The CDM Project Management Office also checks and verifies the data values when reviewing and consolidating the data collected from each site. In case there is a potential data issue, the site manager should inform the CDM Project Manager and attempt to solve the problem. If the issue relates to the equipment, the site manager should immediately contact the supplier and inform the CDM Project Manager. The site manager and monitoring staffs have all received necessary training.

Training

The training and professional education provided to the staffs includes:

- 1) The monitoring equipment suppliers provide training to the site managers and staff on how to operate the equipment and read meters so that the staff can undertake the tasks of data recording and equipment maintenance required by the monitoring plan;
- 2) The CDM experts provide specific CDM training to all personnel involved in the monitoring tasks;
- 3) Internal trainings are conducted periodically on how to comply with the rules and requirements in the “CDM Project Management and Operating Manual” for this project.

Emergency procedures for the monitoring system

In case of the malfunction of on-site digital systems or significant difference between automatic and manual records, site manager should analyze the discrepancy with the assistance of technical staffs based on historic records, technical standard of the equipment and the operational parameters. The site manager should contact the CDM Project Manager and make record of any malfunction or significant discrepancy.

In case of instrument malfunction, and after verification by the CDM Project Manager, the emissions reductions generated during the period of malfunction would not be counted in order to ensure integrity and quality of the emission reductions.

The monitoring team is responsible for the timely replacement of the failed equipment. All the measures taken to address the problem and correct the error should be reported to the CDM Project Manager. The CDM Project Manager needs to validate and sign on the report. The report should be archived according to the “CDM Project Management and Operating Manual”.

In addition, backup meters are prepared, calibrated and ready for use in case of malfunction. Manual records are undertaken for crosschecking and backup.

SECTION D. Data and parameters

D.1. Data and parameters fixed ex ante or at renewal of crediting period

(Copy this table for each piece of data and parameter)

Data/parameter:	$F_{i,j,y}$
Unit	Mt, Mm ³
Description	the amount of fuel i (in a mass or volume unit) consumed by relevant power sources j in year(s) y
Source of data	China Energy Statistical Yearbook (2000~2005)
Value(s) applied)	See Appendix 4 of PDD for details
Choice of data or measurement methods and procedures	Official statistical data
Purpose of data	Official statistical data
Additional comments	

Data/parameter:	NCV_i
Unit	TJ/ mass or volume unit of a fuel
Description	the net calorific value (energy content) per mass or volume unit of a fuel i
Source of data	China Energy Statistical Yearbook (2005)
Value(s) applied)	See Appendix 4 of PDD for details

Choice of data or measurement methods and procedures	National and official data
Purpose of data	National and official data
Additional comments	

Data/parameter:	$OXID_i$
Unit	%
Description	the oxidation factor of the fuel i
Source of data	<i>Revised 1996 IPCC Guidelines for National Greenhouse Gas Inventories</i>
Value(s) applied)	See Appendix 4 of PDD for details
Choice of data or measurement methods and procedures	National data not available, so IPCC default values are used.
Purpose of data	National data not available, so IPCC default values are used.
Additional comments	

Data/parameter:	$EF_{CO_2,i}$
Unit	tCO ₂ e/TJ
Description	the CO ₂ emission factor per unit of energy of the fuel i
Source of data	<i>Revised 1996 IPCC Guidelines for National Greenhouse Gas Inventories</i>
Value(s) applied)	See Appendix 4 of PDD for details
Choice of data or measurement methods and procedures	National data not available, so IPCC default values are used.
Purpose of data	National data not available, so IPCC default values are used.
Additional comments	

Data/parameter:	$G_{j,y}$
Unit	MWh
Description	the amount of electricity generation by source j in year y
Source of data	China Electric Power Yearbook (2000~2005)
Value(s) applied)	See Appendix 4 of PDD for details
Choice of data or measurement methods and procedures	Official statistical data
Purpose of data	Official statistical data
Additional comments	

Data/parameter:	$e_{j,y}$
Unit	%
Description	station service power consumption rate of source j in year y
Source of data	See Appendix 4 of PDD for details
Value(s) applied)	Official statistical data
Choice of data or measurement methods and procedures	China Energy Statistical Yearbook (2000~2005)
Purpose of data	China Energy Statistical Yearbook (2000~2005)
Additional comments	

Data/parameter:	$EE_{coal,adv}$
Unit	%
Description	Efficiency of most advanced coal-fired power technology that is commercially available
Source of data	Notice on the determination of emission factors of regional power grids by Chinese CDM DNA
Value(s) applied)	36.53
Choice of data or measurement methods and procedures	Official statistics of state power authority
Purpose of data	Official statistics of state power authority
Additional comments	

Data/parameter:	$EE_{oil,adv}$
Unit	%
Description	Efficiency of most advanced oil-fired power technology that is commercially available
Source of data	Notice on the determination of emission factors of regional power grids by Chinese CDM DNA
Value(s) applied)	45.87
Choice of data or measurement methods and procedures	Official statistics of state power authority
Purpose of data	Official statistics of state power authority
Additional comments	

Data/parameter:	$EE_{gas,adv}$
Unit	%
Description	Efficiency of most advanced gas-fired power technology that is commercially available
Source of data	Notice on the determination of emission factors of regional power grids by Chinese CDM DNA
Value(s) applied)	45.87
Choice of data or measurement methods and procedures	Official statistics of state power authority
Purpose of data	Official statistics of state power authority
Additional comments	

Data/parameter:	$CAP_{j,y}$
Unit	MW
Description	Installed capacity of source j in year y in Northwest Power Grid
Source of data	China Energy Statistical Yearbook (2000~2005)
Value(s) applied)	See Appendix 4 of PDD for details
Choice of data or measurement methods and procedures	Official statistical data
Purpose of data	Official statistical data
Additional comments	

Data/parameter:	EF_{ELEC}
Unit	tCO ₂ e/MWh
Description	Emissions factor of North China Grid
Source of data	Calculated according to ACM0002 (Version 6). The calculation details are provided in Appendix 4 of the PDD.
Value(s) applied)	0.98255 ³
Choice of data or measurement methods and procedures	The data are used to calculate the baseline emissions from power generation replaced by the project.
Purpose of data	The data are used to calculate the baseline emissions from power generation replaced by the project.
Additional comments	

Data/parameter:	CEF_{ELEC}
Unit	tCO ₂ e/MWh
Description	Carbon emission factor of electricity used by coal mine (= EF_{ELEC})
Source of data	See EF_{ELEC}
Value(s) applied)	0.98255
Choice of data or measurement methods and procedures	The data are used to calculate the project emissions due to the power consumption by the project.
Purpose of data	The data are used to calculate the project emissions due to the power consumption by the project.
Additional comments	Not applicable since the net electricity delivered to the grid is used for the calculation of emission reductions.

Data/parameter:	GWP_{CH4}
Unit	tCO ₂ e / tCH ₄
Description	Global Warming Potential (GWP) of methane, valid for the relevant commitment period.
Source of data	COP/MOP decision: "Standard for application of the global warming potentials to CDM project activities and PoAs for the second commitment period of the Kyoto Protocol" (a value of 25 is to be applied for the second commitment period of the Kyoto Protocol)
Value(s) applied)	25
Choice of data or measurement methods and procedures	The data are used for the calculation of the project emissions from un-combusted methane.
Purpose of data	The data are used for the calculation of the project emissions from un-combusted methane.
Additional comments	Value of 25 is to be applied for the second commitment period of the Kyoto Protocol.

Data/parameter:	Eff_{ELEC}
Unit	%

³ The EF_{ELEC} value (0.9810tCO₂e/MWh) in the registered PDD dated 20th Apr. 2009(version 8.0) and newest PDD approved in 7th Jul. 2014 was a typo mistake. The correct EF_{ELEC} value should be 0.98255tCO₂e/MWh, which came from the published *Jincheng_CMM_Project_PDD_ENG_20070310* during validation (please refer to the web-link <http://cdm.unfccc.int/Projects/Validation/DB/607LHCT2CKOPZ0R1E5SIXC7879PVVX/view.html>) and Chinese CDM DNA (please refer to the web-link <http://cdm.ccchina.gov.cn/Detail.aspx?newsId=3524&TId=3>).

Description	Efficiency of methane destruction/oxidation in power plant
Source of data	IPCC default value
Value(s) applied)	99.5
Choice of data or measurement methods and procedures	The data are used for calculation of project emissions from methane destroyed through power generation.
Purpose of data	The data are used for calculation of project emissions from methane destroyed through power generation.
Additional comments	Please also refer to the section B.6.1 of the registered PDD.

Data/parameter:	CEF_{CH_4}
Unit	tCO ₂ e/tCH ₄
Description	Carbon emission factor for combusted methane
Source of data	According to the applied methodology
Value(s) applied)	2.75
Choice of data or measurement methods and procedures	The data are used for calculation of project emissions from methane destroyed through power generation.
Purpose of data	The data are used for calculation of project emissions from methane destroyed through power generation.
Additional comments	Please also refer to the section B.6.1 of the registered PDD.

Data/parameter:	ρ
Unit	t/m ³
Description	Density of CH ₄ under normal conditions
Source of data	IPCC default value
Value(s) applied)	0.00067
Choice of data or measurement methods and procedures	The data are used for calculation of project emissions from methane delivered to the power plant.
Purpose of data	The data are used for calculation of project emissions from methane delivered to the power plant.
Additional comments	Please also refer to the section B.6.1 of the registered PDD.

Data/parameter:	MM_{BL}
Unit	tCH ₄
Description	Amount of methane consumed by the 15MW power plant
Source of data	Measured in m ³ and recorded in the log sheets and converted into tCH ₄ using IPCC value of 0.00067t/m ³
Value(s) applied)	24,139.73
Choice of data or measurement methods and procedures	Maximum annual value of the four years period prior to project implementation (year 2005-2008) is taken.
Purpose of data	Maximum annual value of the four years period prior to project implementation (year 2005-2008) is taken.
Additional comments	

Data/parameter:	GEN_{BL}
Unit	MWh
Description	Electricity generated by the 15MW power plant
Source of data	Measured

Value(s) applied)	86,089.234
Choice of data or measurement methods and procedures	Maximum annual value of the four years period prior to project implementation (year 2005-2008) is taken.
Purpose of data	Maximum annual value of the four years period prior to project implementation (year 2005-2008) is taken.
Additional comments	

D.2. Data and parameters monitored

(Copy this table for each piece of data and parameter)

Data/parameter:	MM _{ELEC}																																																						
Unit	tCH ₄																																																						
Description	Methane measured delivered to the 120MW power plant during the monitoring period																																																						
Measured/calculated/default	Measured																																																						
Source of data	Measurements by project participants using gas flow meters, temperature & pressure transmitters and gas concentration meters.																																																						
Value(s) of monitored parameter	64,136.49																																																						
Monitoring equipment	<div>Gas flow meters (differential pressure transmitter)</div> <div>Accuracy class: 0.20%</div> <table><tr><th colspan="2">Serial numbers</th><th>Service time in this monitoring period</th><th>Date of last calibration</th><th>Validity of calibration</th></tr><tr><td>No.1 power house</td><td>130911177</td><td>Jan. 1-June 30, 2014</td><td>05/09/2013</td><td>04/09/2014</td></tr><tr><td>No.2 power house</td><td>130911129</td><td>Jan. 1-June 30, 2014</td><td>05/09/2013</td><td>04/09/2014</td></tr><tr><td>No.3 power house</td><td>130911179</td><td>Jan. 1-June 30, 2014</td><td>05/09/2013</td><td>04/09/2014</td></tr><tr><td>No.4 power house</td><td>130911178</td><td>Jan. 1-June 30, 2014</td><td>05/09/2013</td><td>04/09/2014</td></tr></table> <div>Calibration frequency: annually Model: 1151DP3E22M1B1ED; Location: refer to meter F in Figure 3</div> <div>Pressure Transmitters</div> <div>Accuracy class: 0.20%</div> <table><tr><th colspan="2">Serial numbers</th><th>Service time in this monitoring period</th><th>Date of last calibration</th><th>Validity of calibration</th></tr><tr><td>No.1 power house</td><td>09052890</td><td>Jan. 1-June 30, 2014</td><td>20/08/2013</td><td>19/08/2014</td></tr><tr><td>No.2 power house</td><td>635</td><td>Jan. 1-June 30, 2014</td><td>20/08/2013</td><td>19/08/2014</td></tr><tr><td>No.3 power house</td><td>130911128</td><td>Jan. 1-June 30, 2014</td><td>05/09/2013</td><td>04/09/2014</td></tr><tr><td>No.4 power house</td><td>09052889</td><td>Jan. 1-June 30, 2014</td><td>20/08/2013</td><td>19/08/2014</td></tr></table> <div>Calibration frequency: annually Model: 1151GP5E22M1B1ED; 1151GP5E22M1B1D(635&130911128)</div>					Serial numbers		Service time in this monitoring period	Date of last calibration	Validity of calibration	No.1 power house	130911177	Jan. 1-June 30, 2014	05/09/2013	04/09/2014	No.2 power house	130911129	Jan. 1-June 30, 2014	05/09/2013	04/09/2014	No.3 power house	130911179	Jan. 1-June 30, 2014	05/09/2013	04/09/2014	No.4 power house	130911178	Jan. 1-June 30, 2014	05/09/2013	04/09/2014	Serial numbers		Service time in this monitoring period	Date of last calibration	Validity of calibration	No.1 power house	09052890	Jan. 1-June 30, 2014	20/08/2013	19/08/2014	No.2 power house	635	Jan. 1-June 30, 2014	20/08/2013	19/08/2014	No.3 power house	130911128	Jan. 1-June 30, 2014	05/09/2013	04/09/2014	No.4 power house	09052889	Jan. 1-June 30, 2014	20/08/2013	19/08/2014
Serial numbers		Service time in this monitoring period	Date of last calibration	Validity of calibration																																																			
No.1 power house	130911177	Jan. 1-June 30, 2014	05/09/2013	04/09/2014																																																			
No.2 power house	130911129	Jan. 1-June 30, 2014	05/09/2013	04/09/2014																																																			
No.3 power house	130911179	Jan. 1-June 30, 2014	05/09/2013	04/09/2014																																																			
No.4 power house	130911178	Jan. 1-June 30, 2014	05/09/2013	04/09/2014																																																			
Serial numbers		Service time in this monitoring period	Date of last calibration	Validity of calibration																																																			
No.1 power house	09052890	Jan. 1-June 30, 2014	20/08/2013	19/08/2014																																																			
No.2 power house	635	Jan. 1-June 30, 2014	20/08/2013	19/08/2014																																																			
No.3 power house	130911128	Jan. 1-June 30, 2014	05/09/2013	04/09/2014																																																			
No.4 power house	09052889	Jan. 1-June 30, 2014	20/08/2013	19/08/2014																																																			

	<p>Location: refer to meter A in Figure 3</p> <p><u>Temperature Transmitters</u> Accuracy class: $\pm(0.30+0.005 t)$</p> <table border="1"> <thead> <tr> <th colspan="2">Serial numbers</th><th>Service time in this monitoring period</th><th>Date of last calibration</th><th>Validity of calibration</th></tr> </thead> <tbody> <tr> <td>No.1 power house</td><td>7040214</td><td>Jan. 1-June 30, 2014</td><td>20/08/2013</td><td>19/08/2014</td></tr> <tr> <td>No.2 power house</td><td>7040213</td><td>Jan. 1-June 30, 2014</td><td>20/08/2013</td><td>19/08/2014</td></tr> <tr> <td>No.3 power house</td><td>7040216</td><td>Jan. 1-June 30, 2014</td><td>20/08/2013</td><td>19/08/2014</td></tr> <tr> <td>No.4 power house</td><td>7040215</td><td>Jan. 1-June 30, 2014</td><td>20/08/2013</td><td>19/08/2014</td></tr> </tbody> </table> <p>Calibration frequency: annually Model: Pt100 Location: refer to meter A in Figure 3</p> <p><u>Concentration meters (methane concentration analyzer)</u> Accuracy class: $\pm 2.0\%$</p> <table border="1"> <thead> <tr> <th colspan="2">Serial numbers</th><th>Service time in this monitoring period</th><th>Date of last calibration</th><th>Validity of calibration</th></tr> </thead> <tbody> <tr> <td rowspan="2">No.1 power house</td><td>29561</td><td>Jan. 1- Jan. 18, 2014</td><td>25/01/2013</td><td>24/01/2014</td></tr> <tr> <td>25940</td><td>Jan. 18- June 30, 2014</td><td>15/01/2014</td><td>14/01/2015</td></tr> <tr> <td rowspan="2">No.2 power house</td><td>32621</td><td>Jan. 1- Jan. 18, 2014</td><td>25/01/2013</td><td>24/01/2014</td></tr> <tr> <td>29554</td><td>Jan. 18- June 30, 2014</td><td>15/01/2014</td><td>14/01/2015</td></tr> <tr> <td rowspan="2">No.3 power house</td><td>33197</td><td>Jan. 1- Jan. 18, 2014</td><td>25/01/2013</td><td>24/01/2014</td></tr> <tr> <td>29557</td><td>Jan. 18- June 30, 2014</td><td>15/01/2014</td><td>14/01/2015</td></tr> <tr> <td rowspan="2">No.4 power house</td><td>32795</td><td>Jan. 1- Jan. 18, 2014</td><td>25/01/2013</td><td>24/01/2014</td></tr> <tr> <td>30106</td><td>Jan. 18- June 30, 2014</td><td>15/01/2014</td><td>14/01/2015</td></tr> </tbody> </table> <p>Calibration frequency: annually Model: 97460 Location: refer to meter C in Figure 3 Note: The interim replacement of Concentration meters for all 4 power houses is due to the calibration activities which require the meters to be delivered to the certified inspection institution.</p>	Serial numbers		Service time in this monitoring period	Date of last calibration	Validity of calibration	No.1 power house	7040214	Jan. 1-June 30, 2014	20/08/2013	19/08/2014	No.2 power house	7040213	Jan. 1-June 30, 2014	20/08/2013	19/08/2014	No.3 power house	7040216	Jan. 1-June 30, 2014	20/08/2013	19/08/2014	No.4 power house	7040215	Jan. 1-June 30, 2014	20/08/2013	19/08/2014	Serial numbers		Service time in this monitoring period	Date of last calibration	Validity of calibration	No.1 power house	29561	Jan. 1- Jan. 18, 2014	25/01/2013	24/01/2014	25940	Jan. 18- June 30, 2014	15/01/2014	14/01/2015	No.2 power house	32621	Jan. 1- Jan. 18, 2014	25/01/2013	24/01/2014	29554	Jan. 18- June 30, 2014	15/01/2014	14/01/2015	No.3 power house	33197	Jan. 1- Jan. 18, 2014	25/01/2013	24/01/2014	29557	Jan. 18- June 30, 2014	15/01/2014	14/01/2015	No.4 power house	32795	Jan. 1- Jan. 18, 2014	25/01/2013	24/01/2014	30106	Jan. 18- June 30, 2014	15/01/2014	14/01/2015
Serial numbers		Service time in this monitoring period	Date of last calibration	Validity of calibration																																																															
No.1 power house	7040214	Jan. 1-June 30, 2014	20/08/2013	19/08/2014																																																															
No.2 power house	7040213	Jan. 1-June 30, 2014	20/08/2013	19/08/2014																																																															
No.3 power house	7040216	Jan. 1-June 30, 2014	20/08/2013	19/08/2014																																																															
No.4 power house	7040215	Jan. 1-June 30, 2014	20/08/2013	19/08/2014																																																															
Serial numbers		Service time in this monitoring period	Date of last calibration	Validity of calibration																																																															
No.1 power house	29561	Jan. 1- Jan. 18, 2014	25/01/2013	24/01/2014																																																															
	25940	Jan. 18- June 30, 2014	15/01/2014	14/01/2015																																																															
No.2 power house	32621	Jan. 1- Jan. 18, 2014	25/01/2013	24/01/2014																																																															
	29554	Jan. 18- June 30, 2014	15/01/2014	14/01/2015																																																															
No.3 power house	33197	Jan. 1- Jan. 18, 2014	25/01/2013	24/01/2014																																																															
	29557	Jan. 18- June 30, 2014	15/01/2014	14/01/2015																																																															
No.4 power house	32795	Jan. 1- Jan. 18, 2014	25/01/2013	24/01/2014																																																															
	30106	Jan. 18- June 30, 2014	15/01/2014	14/01/2015																																																															
Measuring/reading/recording frequency:	Continuous/Continuous/Continuous (system) + Hourly (manual) Continuous monitoring, meters in compliance with relevant standards and requirements are used, and gas volumes, pressure, temperature and methane concentration are read and consolidated by a distributed control system.																																																																		
Calculation method (if applicable):	Not applicable																																																																		
QA/QC procedures:	Flow meters, pressure & temperature transmitters and gas concentration meters are checked monthly and calibrated annually. Data are manually recorded hourly (on the hour ± 5 minutes) for cross-checking and used as a backup in case the automatic recording system is under abnormal condition.																																																																		
Purpose of data:	Project emissions: - from methane destroyed MD_{ELEC} (Formula 3 & 5 in the PDD); - from un-combusted methane P_{UM} (Formula 6 in the PDD); Baseline emissions: - for release of methane into atmosphere that is voided by the project BE_{MR}																																																																		

	(Formula 10 in the PDD)
Additional comments:	

Data/parameter:	GEN _{1,y}																												
Unit	MWh																												
Description	Electricity supplied by project activity to North China Grid during the monitoring period																												
Measured/calculated/default	Measured																												
Source of data	1. Monitored with power meter installed by the electric grid company and recorded in the form of Settlement Notice issued by the electric grid company (monthly); 2. Manually recorded by JMC hourly for cross-checking and backup.																												
Value(s) of monitored parameter	375,589.632 (settlement notice for ER calculation) 376,591.776 (manual record for cross-check)																												
Monitoring equipment	<div><div><div><div><div>Bidirectional electricity meters (JMC, used for cross-checking and backup)</div><div>Accuracy class: 0.2S</div><table><tr><th>Serial numbers</th><th>Date of calibration</th><th>Validity of calibration</th></tr><tr><td rowspan="2">86384895 (Main)</td><td>02/05/2013</td><td>01/05/2014</td></tr><tr><td>28/04/2014</td><td>27/04/2015</td></tr><tr><td rowspan="2">86384896 (Back up)</td><td>02/05/2013</td><td>01/05/2014</td></tr><tr><td>28/04/2014</td><td>27/04/2015</td></tr></table></div><div>Calibration frequency: annually Model: ZMQ202C Location: refer to meter E_{pp} in figure 3</div></div><div><div><div><div>Bidirectional electricity meters (Grid, used for emission reduction calculations)</div><div>Accuracy class: 0.2S</div><table><tr><th>Serial numbers</th><th>Date of calibration</th><th>Validity of calibration</th></tr><tr><td rowspan="2">507003703 (Main)</td><td>02/05/2013</td><td>01/05/2014</td></tr><tr><td>28/04/2014</td><td>27/04/2015</td></tr><tr><td rowspan="2">507003731 (Back up)</td><td>02/05/2013</td><td>01/05/2014</td></tr><tr><td>28/04/2014</td><td>27/04/2015</td></tr></table></div><div>Calibration frequency: annually Model: DTSD718 Location: refer to meter E_{GRID} in figure 3</div></div></div></div></div>			Serial numbers	Date of calibration	Validity of calibration	86384895 (Main)	02/05/2013	01/05/2014	28/04/2014	27/04/2015	86384896 (Back up)	02/05/2013	01/05/2014	28/04/2014	27/04/2015	Serial numbers	Date of calibration	Validity of calibration	507003703 (Main)	02/05/2013	01/05/2014	28/04/2014	27/04/2015	507003731 (Back up)	02/05/2013	01/05/2014	28/04/2014	27/04/2015
Serial numbers	Date of calibration	Validity of calibration																											
86384895 (Main)	02/05/2013	01/05/2014																											
	28/04/2014	27/04/2015																											
86384896 (Back up)	02/05/2013	01/05/2014																											
	28/04/2014	27/04/2015																											
Serial numbers	Date of calibration	Validity of calibration																											
507003703 (Main)	02/05/2013	01/05/2014																											
	28/04/2014	27/04/2015																											
507003731 (Back up)	02/05/2013	01/05/2014																											
	28/04/2014	27/04/2015																											
Measuring/reading/recording frequency:	Continuous/Continuous/Hourly																												
Calculation method (if applicable):	Not applicable																												
QA/QC procedures:	The electricity delivered to the grid are recorded in the power settlement notice issued by the grid company based on the readings of the power meters installed at the Qinchi transformer station in accordance with relevant national and sectoral standards (indicated as point E _{GRID} on Figure 3). The amount of electricity delivered to the grid is double-checked by the readings of the power meters installed at the project 120MW power plant (indicated as point E _{PP} on Figure 3). All the power meters are calibrated annually.																												
Purpose of data:	Baseline emissions from power generation replaced by the project BE _{Use,y} (Formula 11 in the PDD)																												
Additional comments:																													

Data/parameter:	GEN _{2,y}																										
Unit	MWh																										
Description	Electricity consumed by the project during the monitoring period which is supplied by North China Grid in case of emergency.																										
Measured/calculated/default	Measured																										
Source of data	<ol style="list-style-type: none"> 1. Monitored with power meter installed by the electric grid company and recorded in the form of Settlement Notice issued by the electric grid company (monthly); 2. Manually recorded by JMC hourly for cross-checking and backup. 																										
Value(s) of monitored parameter	4.224 (settlement notice for ER calculation) 4.224 (manual record for cross-check)																										
Monitoring equipment	<p><u>Bidirectional electricity meters</u> (JMC, used for cross-checking and backup) Accuracy class: 0.2S</p> <table border="1"> <thead> <tr> <th>Serial numbers</th><th>Date of calibration</th><th>Validity of calibration</th></tr> </thead> <tbody> <tr> <td rowspan="2">86384895 (Main)</td><td>02/05/2013</td><td>01/05/2014</td></tr> <tr> <td>28/04/2014</td><td>27/04/2015</td></tr> <tr> <td rowspan="2">86384896 (Back up)</td><td>02/05/2013</td><td>01/05/2014</td></tr> <tr> <td>28/04/2014</td><td>27/04/2015</td></tr> </tbody> </table> <p>Calibration frequency: annually Model: ZMQ202C Location: refer to meter E_{pp} in figure 3</p> <p><u>Bidirectional electricity meters</u> (Grid, used for emission reduction calculations) Accuracy class: 0.2S</p> <table border="1"> <thead> <tr> <th>Serial numbers</th><th>Date of calibration</th><th>Validity of calibration</th></tr> </thead> <tbody> <tr> <td rowspan="2">507003703 (Main)</td><td>02/05/2013</td><td>01/05/2014</td></tr> <tr> <td>28/04/2014</td><td>27/04/2015</td></tr> <tr> <td rowspan="2">507003731 (Back up)</td><td>02/05/2013</td><td>01/05/2014</td></tr> <tr> <td>28/04/2014</td><td>27/04/2015</td></tr> </tbody> </table> <p>Calibration frequency: annually Model: DTSD718 Location: refer to meter E_{GRID} in figure 3</p>	Serial numbers	Date of calibration	Validity of calibration	86384895 (Main)	02/05/2013	01/05/2014	28/04/2014	27/04/2015	86384896 (Back up)	02/05/2013	01/05/2014	28/04/2014	27/04/2015	Serial numbers	Date of calibration	Validity of calibration	507003703 (Main)	02/05/2013	01/05/2014	28/04/2014	27/04/2015	507003731 (Back up)	02/05/2013	01/05/2014	28/04/2014	27/04/2015
Serial numbers	Date of calibration	Validity of calibration																									
86384895 (Main)	02/05/2013	01/05/2014																									
	28/04/2014	27/04/2015																									
86384896 (Back up)	02/05/2013	01/05/2014																									
	28/04/2014	27/04/2015																									
Serial numbers	Date of calibration	Validity of calibration																									
507003703 (Main)	02/05/2013	01/05/2014																									
	28/04/2014	27/04/2015																									
507003731 (Back up)	02/05/2013	01/05/2014																									
	28/04/2014	27/04/2015																									
Measuring/reading/recording frequency:	Continuous/Continuous/Hourly																										
Calculation method (if applicable):	Not applicable																										
QA/QC procedures:	The electricity imported from the grid are recorded in the power settlement notice issued by the grid company based on the readings of the power meters installed at the Qinchi transformer station in accordance with relevant national and sectoral standards (indicated as point E _{GRID} on Figure 3). The amount of electricity imported from the grid is double-checked by the readings of the power meters installed at the project 120 MW power plant (indicated as point E _{PP} on Figure 3). All the power meters are calibrated annually.																										
Purpose of data:	Baseline emissions from power generation replaced by the project BE _{Use,y} (Formula 11 in the PDD)																										
Additional comments:																											

Data/parameter:	PC _{CH4,y}
Unit	%

Description	Concentration of methane (in mass) in extracted gas (%), measured on wet basis																																									
Measured/calculated/default	Measured																																									
Source of data	Daily monitoring by JMC. Meter readings transferred through digital (DCS) system and recorded automatically.																																									
Value(s) of monitored parameter	<table border="1"> <thead> <tr> <th>Date and time</th><th>No.1 Power House</th><th>No.2 Power House</th><th>No.3 Power House</th><th>No.4 Power House</th></tr> </thead> <tbody> <tr> <td>1/1/2014 11:00AM</td><td>34.47</td><td>34.97</td><td>35.20</td><td>35.57</td></tr> <tr> <td>1/2/2014 11:00AM</td><td>33.71</td><td>33.72</td><td>35.90</td><td>36.24</td></tr> <tr> <td>1/3/2014 11:00AM</td><td>32.35</td><td>31.79</td><td>31.06</td><td>31.99</td></tr> <tr> <td>1/4/2014 11:00AM</td><td>33.25</td><td>32.77</td><td>34.42</td><td>30.51</td></tr> <tr> <td>1/5/2014 11:00AM</td><td>36.54</td><td>35.90</td><td>34.63</td><td>34.63</td></tr> <tr> <td>1/6/2014 11:00AM</td><td>34.45</td><td>33.16</td><td>30.96</td><td>34.35</td></tr> </tbody> </table> <p>Note: The concentration of methane in extracted gas is measured, read and recorded continuously in compliance with the monitoring requirement. The data recorded at 11AM of the first day of each month has been presented above for illustration purpose only.</p>	Date and time	No.1 Power House	No.2 Power House	No.3 Power House	No.4 Power House	1/1/2014 11:00AM	34.47	34.97	35.20	35.57	1/2/2014 11:00AM	33.71	33.72	35.90	36.24	1/3/2014 11:00AM	32.35	31.79	31.06	31.99	1/4/2014 11:00AM	33.25	32.77	34.42	30.51	1/5/2014 11:00AM	36.54	35.90	34.63	34.63	1/6/2014 11:00AM	34.45	33.16	30.96	34.35						
Date and time	No.1 Power House	No.2 Power House	No.3 Power House	No.4 Power House																																						
1/1/2014 11:00AM	34.47	34.97	35.20	35.57																																						
1/2/2014 11:00AM	33.71	33.72	35.90	36.24																																						
1/3/2014 11:00AM	32.35	31.79	31.06	31.99																																						
1/4/2014 11:00AM	33.25	32.77	34.42	30.51																																						
1/5/2014 11:00AM	36.54	35.90	34.63	34.63																																						
1/6/2014 11:00AM	34.45	33.16	30.96	34.35																																						
Monitoring equipment	<p><u>Concentration meters (methane concentration analyzer)</u> Accuracy class: $\pm 2.0\%$</p> <table border="1"> <thead> <tr> <th colspan="2">Serial numbers</th><th>Service time in this monitoring period</th><th>Date of last calibration</th><th>Validity of calibration</th></tr> </thead> <tbody> <tr> <td rowspan="2">No.1 power house</td><td>29561</td><td>Jan. 1- Jan. 18, 2014</td><td>25/01/2013</td><td>24/01/2014</td></tr> <tr> <td>25940</td><td>Jan. 18- June 30, 2014</td><td>15/01/2014</td><td>14/01/2015</td></tr> <tr> <td rowspan="2">No.2 power house</td><td>32621</td><td>Jan. 1- Jan. 18, 2014</td><td>25/01/2013</td><td>24/01/2014</td></tr> <tr> <td>29554</td><td>Jan. 18- June 30, 2014</td><td>15/01/2014</td><td>14/01/2015</td></tr> <tr> <td rowspan="2">No.3 power house</td><td>33197</td><td>Jan. 1- Jan. 18, 2014</td><td>25/01/2013</td><td>24/01/2014</td></tr> <tr> <td>29557</td><td>Jan. 18- June 30, 2014</td><td>15/01/2014</td><td>14/01/2015</td></tr> <tr> <td rowspan="2">No.4 power house</td><td>32795</td><td>Jan. 1- Jan. 18, 2014</td><td>25/01/2013</td><td>24/01/2014</td></tr> <tr> <td>30106</td><td>Jan. 18- June 30, 2014</td><td>15/01/2014</td><td>14/01/2015</td></tr> </tbody> </table> <p>Calibration frequency: annually Model: 97460 Location: refer to meter C in Figure 3 Note: The interim replacement of Concentration meters for all 4 power houses is due to the calibration activities which require the meters to be delivered to the certified inspection institution.</p>	Serial numbers		Service time in this monitoring period	Date of last calibration	Validity of calibration	No.1 power house	29561	Jan. 1- Jan. 18, 2014	25/01/2013	24/01/2014	25940	Jan. 18- June 30, 2014	15/01/2014	14/01/2015	No.2 power house	32621	Jan. 1- Jan. 18, 2014	25/01/2013	24/01/2014	29554	Jan. 18- June 30, 2014	15/01/2014	14/01/2015	No.3 power house	33197	Jan. 1- Jan. 18, 2014	25/01/2013	24/01/2014	29557	Jan. 18- June 30, 2014	15/01/2014	14/01/2015	No.4 power house	32795	Jan. 1- Jan. 18, 2014	25/01/2013	24/01/2014	30106	Jan. 18- June 30, 2014	15/01/2014	14/01/2015
Serial numbers		Service time in this monitoring period	Date of last calibration	Validity of calibration																																						
No.1 power house	29561	Jan. 1- Jan. 18, 2014	25/01/2013	24/01/2014																																						
	25940	Jan. 18- June 30, 2014	15/01/2014	14/01/2015																																						
No.2 power house	32621	Jan. 1- Jan. 18, 2014	25/01/2013	24/01/2014																																						
	29554	Jan. 18- June 30, 2014	15/01/2014	14/01/2015																																						
No.3 power house	33197	Jan. 1- Jan. 18, 2014	25/01/2013	24/01/2014																																						
	29557	Jan. 18- June 30, 2014	15/01/2014	14/01/2015																																						
No.4 power house	32795	Jan. 1- Jan. 18, 2014	25/01/2013	24/01/2014																																						
	30106	Jan. 18- June 30, 2014	15/01/2014	14/01/2015																																						
Measuring/reading/recording frequency:	Continuous/Continuous/Continuous (system) + Hourly (manual) Concentration meters, optical and calorific, with accuracy in compliance with relevant national standards.																																									
Calculation method (if applicable):	Not applicable																																									
QA/QC procedures:	Concentration meters are checked monthly and calibrated annually to ensure accuracy.																																									
Purpose of data:	Integrated with the monitoring of MM _{ELEC} (methane delivered to the power plant)																																									
Additional comments:																																										

Data/parameter:	PC _{NMHC,y}
Unit	%
Description	NMHC concentration in coal mine gas

Measured/calculated/default	Measured
Source of data	Testing report by Shanxi Coal Industry Bureau Comprehensive Testing Center on March 28, 2014
Value(s) of monitored parameter	0 (C ₂ H ₆ =0.00%, C ₃ H ₈ =0.00%, C ₄ H ₁₀ (N- butane) =0.00%, C ₄ H ₁₀ (Isobutane) =0.00%)
Monitoring equipment	Owned and operated by Shanxi Coal Industry Bureau Comprehensive Testing Center
Measuring/reading/recording frequency:	Annual sampling The gas to be tested is sampled on site annually in accordance with relevant industry standards and procedures. The samples are analyzed by a qualified laboratory.
Calculation method (if applicable):	Not applicable
QA/QC procedures:	The test is implemented by Shanxi Coal Industry Bureau Comprehensive Testing Center. A minimum of 3 samples is collected in secure gas sample vessels, suitable for storage and transport to the laboratory. If one sample is found to be faulty (i.e. gas leakage), the replacement sample will be taken.
Purpose of data:	Verifying whether PC _{NMHC,y} is below 1%
Additional comments:	

Data/parameter:	CEF _{NMHC}
Unit	tCO ₂ e/t NMHC
Description	Carbon emission factor for combusted non methane hydrocarbons
Measured/calculated/default	Measured (only if PC _{NMHC,y} >1%)
Source of data	Testing report by Shanxi Coal Industry Bureau Comprehensive Testing Center on March 28, 2014
Value(s) of monitored parameter	Not applicable since the PC _{NMHC,y} =0
Monitoring equipment	Owned and operated by Shanxi Coal Industry Bureau Comprehensive Testing Center
Measuring/reading/recording frequency:	To be measured only when NMHC concentration (in mass) in coal mine gas is higher than 1%
Calculation method (if applicable):	Not applicable
QA/QC procedures:	In the gas composition test report issued by Shanxi Coal Industry Bureau Comprehensive Testing Center on March 28, 2014, the concentration of non methane hydrocarbons was 0, therefore, it is not required to measure CEF _{NMHC} .
Purpose of data:	Project emissions from combustion of NMHC (Formula 3 in the PDD)
Additional comments:	

Data/parameter:	MM _{BL,y}
Unit	tCH ₄
Description	Amount of methane consumed by the 15MW power plant during the monitoring period.
Measured/calculated/default	Measured
Source of data	Digital and manual recording in log sheets
Value(s) of monitored parameter	5,684.48

Serial numbers	Service time in this monitoring period	Date of last calibration	Validity of calibration
1207-00247	Jan. 1-June 20, 2014	20/06/2013	19/06/2014
1111-10724	June 20-June 30, 2014	20/06/2014	19/06/2015

Calibration frequency: annually
Model: FFM61S500
Location: refer to meter F_{BL} in figure 3
Note: The interim replacement of gas flow meters is due to the calibration activities which require the meters to be delivered to the certified inspection institution.

Differential pressure transmitters
Accuracy class: 0.1 grade

Serial numbers	Service time in this monitoring period	Date of last calibration	Validity of calibration
5745032	Jan. 1-June 19, 2014	20/06/2013	19/06/2014
6035469	June 19-June 30, 2014	18/06/2014	17/06/2015

Calibration frequency: annually
Model: 3051CD
Location: refer to meter A_{BL} in figure 3
Note: The interim replacement of differential pressure transmitters is due to the calibration activities which require the meters to be delivered to the certified inspection institution.

Pressure Transmitters
Accuracy class: 0.1 grade

Serial numbers	Service time in this monitoring period	Date of last calibration	Validity of calibration
5831829	Jan. 1-June 19, 2014	29/08/2013	28/08/2014
5954203	June 19-June 30, 2014	18/06/2014	17/06/2015

Calibration frequency: annually
Model: 3051TG
Location: refer to meter A_{BL} in figure 3
Note: The interim replacement of pressure transmitters is due to the calibration activities which require the meters to be delivered to the certified inspection institution.

Temperature Transmitters
Accuracy class: 0.025%

Serial numbers	Service time in this monitoring period	Date of last calibration	Validity of calibration
b527145937	Jan. 1-June 19, 2014	22/08/2013	21/08/2014
b541154537	June 19-June 30, 2014	19/06/2014	18/06/2015

Calibration frequency: annually
Model: STT25M(b541154537); STT25H(b527145937)
Location: refer to meter A_{BL} in figure 3
Note: The interim replacement of temperature transmitters is due to the calibration activities which require the meters to be delivered to the certified inspection institution.

Methane concentration analyzer
Accuracy class: $\pm 3.0\%$

Serial numbers	Service time in this monitoring period	Date of last calibration	Validity of calibration
55435/1	Jan. 1-June 22, 2014	23/06/2013	22/06/2014
56593/4	June 22-June 30, 2014	20/06/2014	19/06/2015

	Calibration frequency: annually Model: GTR 196 Location: refer to meter C _{BL} in figure 3 Note: The interim replacement of methane concentration analyzer is due to the calibration activities which require the meters to be delivered to the certified inspection institution.
Measuring/reading/recording frequency:	Continuous/Continuous/Hourly Continuous monitoring, flow meters in compliance with relevant standards and requirements are used. Gas volumes, pressure, temperature and concentration are read and consolidated by a distributed control system
Calculation method (if applicable):	Not applicable
QA/QC procedures:	All the meters/sensors are checked monthly and calibrated annually to ensure accuracy.
Purpose of data:	The readings of these meters are not used for ER calculation, but for crosschecking only. MM _{BL,y} value are compared against MM _{BL} to ensure no leakage (MM _{BL,y} ≥ MM _{BL}). In case MM _{BL,y} < MM _{BL} , the difference will be calculated in terms of the contributing emission reductions, which will be deducted from the total claimed emission reductions. MM _{BL,y} is lower than MM _{BL} in terms of monthly average, therefore the leakage is deducted from the total claimed ERs (please refer to section E.3 and CER calculation sheet).
Additional comments:	

Data/parameter:	GEN _{BL,y}											
Unit	MWh											
Description	Electricity generated by the 15MW power plant during the monitoring period.											
Measured/calculated/default	Measured											
Source of data	Meter readings and manual records (hourly) for cross-checking											
Value(s) of monitored parameter	33,388.33											
Monitoring equipment	<div>Electricity meters</div> <div>Accuracy class: 0.2S</div> <table><tr><th>Serial numbers</th><th>Service time in this monitoring period</th><th>Date of last calibration</th><th>Validity of calibration</th></tr><tr><td>000290</td><td>Jan. 1-June 30, 2014</td><td>21/06/2012</td><td>20/06/2017</td></tr></table> <div>Calibration frequency: every 5 years</div> <div>Model: DSSD876</div> <div>Location: refer to meter E_{BL} in figure 3</div>				Serial numbers	Service time in this monitoring period	Date of last calibration	Validity of calibration	000290	Jan. 1-June 30, 2014	21/06/2012	20/06/2017
Serial numbers	Service time in this monitoring period	Date of last calibration	Validity of calibration									
000290	Jan. 1-June 30, 2014	21/06/2012	20/06/2017									
Measuring/reading/recording frequency:	Continuous/Continuous/Hourly											
Calculation method (if applicable):	Not applicable											
QA/QC procedures:	The power meter is calibrated in accordance with relevant national standard.											
Purpose of data:	The readings of the meter are not used for ER calculation, but for reference only. GEN _{BL,y} value will be compared against GEN _{BL} to ensure no leakage (GEN _{BL,y} ≥ GEN _{BL}). In case GEN _{BL,y} < GEN _{BL} , the difference will be calculated in terms of the contributing emission reductions, which will be deducted from the total claimed emission reductions. GEN _{BL,y} is lower than GEN _{BL} in terms of monthly average , therefore the leakage is deducted from the total claimed ER for the monitoring period (details please refer to section E.3 and CER calculation sheet).											
Additional comments:												

D.3. Implementation of sampling plan

>>

Not applicable. Sampling plan is not required for the parameters in the project activity.

SECTION E. Calculation of emission reductions or GHG removals by sinks**E.1. Calculation of baseline emissions or baseline net GHG removals by sinks**

>>

Baseline emissions can be calculated using the formulae below in accordance with the registered PDD:

$$BE = BE_{MD} + BE_{MR} + BE_{Use} \quad (7)$$

Where:

BE	Baseline emissions (tCO ₂ e)
BE _{MD}	Baseline emissions from destruction of methane in the baseline scenario (tCO ₂ e)
BE _{MR}	Baseline emissions from release of methane into the atmosphere that is avoided by the project activity (tCO ₂ e)
BE _{Use}	Baseline emissions from power generation replaced by this project (tCO ₂ e)

And:

$$BE_{MD}^4 = 0$$

$$BE_{MR} = 25 \times MM_{ELEC} \quad (10)$$

$$BE_{Use} = (GEN_{1,y} - GEN_{2,y}) \times EF_{ELEC} \quad (11)$$

Where:

GEN _{1,y}	Electricity supplied by project activity to North China Grid (MWh)
GEN _{2,y}	Electricity consumed by project activity which is supplied by North China Grid in case of emergency (MWh)
EF _{ELEC}	Emission factors of North China Grid (0.98255 tCO ₂ e/MWh)

GEN₁ and GEN₂ are continuously measured both in 120MW Power Plant and Grid Company by bidirectional electricity meters. The recordings in the form of Settlement Notice issued by the Grid Company (monthly) are used for calculation and the data manually recorded by JMC hourly are used for cross-checking and backup.

Using the measured data, the results of baseline emissions during monitoring period are shown below:

Table 3: Calculation of baseline emissions

Monitoring Period	MM _{ELEC} (tCH ₄)	GEN ₁ (MWh)	GEN ₂ (MWh)	BE _{MD} (tCO ₂ e)	BE _{MR} (tCO ₂ e)	BE _{Use} (tCO ₂ e)	BE (tCO ₂ e)
	Measured values			A	B	C	D = A+B+C

⁴ See PDD page 24-25.

01/01/2014-31/01/2014	9,265.57	54,260.448	0	0	231,639.25	53,313.60	284,952.85
01/02/2014-28/02/2014	8,944.20	50,873.856	0	0	223,605.00	49,986.11	273,591.10
01/03/2014-31/03/2014	10,456.49	58,339.776	0	0	261,412.25	57,321.75	318,733.99
01/04/2014-30/04/2014	10,725.76	60,956.016	4.224	0	268,144.00	59,888.18	328,032.18
01/05/2014-31/05/2014	12,505.19	76,737.936	0	0	312,629.75	75,398.86	388,028.60
01/06/2014-30/06/2014	12,239.28	74,421.600	0	0	305,982.00	73,122.94	379,104.94
Total	64,136.49	375,589.632	0	0	1,603,412.25	369,031.44	1,972,443.66

Therefore, the total baseline emissions during the monitoring period are **1,972,443.66 tCO₂e**.

E.2. Calculation of project emissions or actual net GHG removals by sinks

>>

Project emissions are calculated with formulae below in accordance with the registered PDD.

$$PE = PE_{ME} + PE_{MD} + PE_{UM} \quad (1)$$

Where:

PE	Project emissions (tCO ₂ e)
PE _{ME}	Project emissions from energy use to capture and use methane (tCO ₂ e)
PE _{MD}	Project emissions from methane destroyed (tCO ₂ e)
PE _{UM}	Project emissions from un-combusted methane (tCO ₂ e)

And:

$$PE_{ME} = CONS_{ELEC, PJ} \times CEF_{ELEC} = 0 \quad (2)^5$$

$$PE_{MD} = MD_{ELEC} \times (CEF_{CH4} + r \times CEF_{NMHC}) \quad (3)$$

As the NMHC concentration is less than 1% of the coalmine gas throughout the monitoring period, thus the combustion emissions from non-methane hydrocarbons can be ignored⁶ (r=0).

Therefore,

$$PE_{MD} = MD_{ELEC} \times CEF_{CH4} = (MM_{ELEC} \times Eff_{ELEC}) \times CEF_{CH4} = (MM_{ELEC} \times 0.995) \times 2.75$$

$$PE_{UM} = GWP_{CH4} \times MM_{ELEC} \times (1 - Eff_{ELEC}) = 25 \times MM_{ELEC} \times (1 - 0.995) \quad (6)$$

Where:

⁵ When calculating the ER, the net electricity delivered to the grid is used (as per PDD, page 22).

⁶ The NMHC concentration will continue being monitored annually to check whether its concentration is below or above 1% to determine if the NMHC combustion be included in the project emissions.

CONS _{ELEC}	Additional electricity consumption for use of methane (MWh)
MD _{ELEC}	Methane destroyed through power generation (tCH ₄)
MM _{ELEC}	Methane measured delivered to power plant (tCH ₄)
CEF _{CH₄}	Carbon emission factor for combusted methane (tCO ₂ e/tCH ₄)
Eff _{ELEC}	Efficiency of methane destruction /oxidation in power plant

The results of project emissions calculation during monitoring period are shown in the Table 4.

Table 4: Calculation of project emissions

Monitoring Period	PE _{ME} (tCO ₂ e)	PE _{MD} (tCO ₂ e)	PE _{UM} (tCO ₂ e)	PE (tCO ₂ e)
	A	B	C	D=A+B+C
01/01/2014-31/01/2014	0	25,352.92	1,158.20	26,511.12
01/02/2013-28/02/2014	0	24,473.57	1,118.03	25,591.60
01/03/2013-31/03/2014	0	28,611.57	1,307.06	29,918.64
01/04/2013-30/04/2014	0	29,348.36	1,340.72	30,689.09
01/05/2013-31/05/2014	0	34,217.33	1,563.15	35,780.48
01/06/2013-30/06/2014	0	33,489.73	1,529.91	35,019.64
Total	0	175,493.47	8,017.06	183,510.57

Therefore, the total project emissions during the monitoring period are **183,510.57 tCO₂e**.

E.3. Calculation of leakage

>>

As described in the PDD (page 28), the leakage of this project is 0.

In addition, for the experimental 15MW power plant, GEN_{BL,y}, the electricity generated by the 15MW power plant has been monitored and the volume during this monitoring period is 33,388.33 MWh. The monthly average is 5,564.72 MWh. MM_{BL,y}, the volume of methane sent to the 15MW power plant has been monitored and the value for this monitoring period is 5,684.48 tCH₄. The monthly average is 947.41 tCH₄.

Table 5 shows that the monthly average values of the methane consumption of 15 MW power plant for this monitoring period is lower than the monthly average values in year 2008⁷.

Table 5: Experimental 15MW power plant data comparison

Parameter Period	MM _{BL,y} (tCH ₄) 01/01/2014- 30/06/2014	MM _{BL} (tCH ₄) 01/01/2008- 31/12/2008	GEN _{BL,y} (MWh) 01/01/2014- 30/06/2014	GEN _{BL} (MWh) 01/01/2008- 31/12/2008
Total	5,684.48	24,139.73	33,388.33	86,089.23
Monthly Average	947.41	2,011.64	5,564.72	7,174.10

⁷ Year 2008 was the year with the highest annual values for both MM_{BL} and GEN_{BL} during the period (year 2005-2008) before this project activity was commissioned in 2009. Applying the highest annual values for both MM_{BL} and GEN_{BL} ensure the conservativeness of the CER results. Please also refer to section D.2 of the MR.

According to the description of section D.2, in case $MM_{BL,y} < MM_{BL}$, the difference will be calculated in terms of the contributing emission reductions, which will be deducted from the total claimed emission reductions. In case $GEN_{BL,y} < GEN_{BL}$, the difference will be calculated in terms of the contributing emission reductions that are not attributable to the project activity and would have been generated in the business as usual scenario by the 15MW power plant. The contributing emission reductions will be deducted from the total claimed emission reductions. The contributing emission reductions can be calculated through the same formula adopted in section E.1, E.2 and E.4 for regular emission reductions calculations. There are only 2 differences: Where MM_{ELEC} appears in the formulae, it is replaced by $(MM_{BL} - MM_{BL,y})$; where $(GEN_{1,y} - GEN_{2,y})$ appears, it is replaced by $(GEN_{BL} - GEN_{BL,y})$. To differentiate, the replaced variables in formula in section E.1 E.2 and E.4 were asterisked in the following Table 6, 7 and 8.

Table 6: Calculation of contributing Baseline Emissions

Monitoring Period	$MM_{BL,y}$ (tCH ₄)	MM_{BL} (tCH ₄)	$GEN_{BL,y}$ (MWh)	GEN_{BL} (MWh)	*BE _{MD} (tCO _{2e})	*BE _{MR} (tCO _{2e})	*BE _{Use} (tCO _{2e})	*BE (tCO _{2e})
	Measured values	Monthly Average in year 2008	Measured values	Monthly Average in year 2008	A	B	C	D = A+B+C
01/01/2014-31/01/2014	509.23	2,011.64	2,563.400	7,174.10	0	37,560.35	4,530.25	42,090.60
01/02/2014-28/02/2014	459.80	2,011.64	2,332.400	7,174.10	0	38,796.10	4,757.22	43,553.32
01/03/2014-31/03/2014	489.74	2,011.64	2,814.170	7,174.10	0	38,047.60	4,283.85	42,331.46
01/04/2014-30/04/2014	1,351.13	2,011.64	8,248.360	7,174.10	0	16,512.85	0.00	16,512.85
01/05/2014-31/05/2014	1,463.58	2,011.64	8,904.000	7,174.10	0	13,701.60	0.00	13,701.60
01/06/2014-30/06/2014	1,411.00	2,011.64	8,526.000	7,174.10	0	15,016.10	0.00	15,016.10
Total	5,684.48		33,388.330		0	159,634.63	13,571.31	173,205.94

Table 7: Calculation of contributing Project Emissions

Monitoring Period	*PE _{ME} (tCO _{2e})	*PE _{MD} (tCO _{2e})	*PE _{UM} (tCO _{2e})	*PE (tCO _{2e})
	A	B	C	D=A+B+C
01/01/2014-31/01/2014	0	4,110.98	187.80	4,298.78
01/02/2014-28/02/2014	0	4,246.23	193.98	4,440.21
01/03/2014-31/03/2014	0	4,164.31	190.24	4,354.55
01/04/2014-30/04/2014	0	1,807.33	82.56	1,889.90
01/05/2014-31/05/2014	0	1,499.64	68.51	1,568.15
01/06/2014-30/06/2014	0	1,643.51	75.08	1,718.59
Total	0	17,472.01	798.17	18,270.18

Table 8: Total contributing Emission Reductions

Monitoring Period	*PE (tCO _{2e})	*BE (tCO _{2e})	*ER (tCO _{2e})
	A	B	D = B-A
01/01/2014-31/01/2014	4,298.78	42,090.60	37,791.82

01/02/2014-28/02/2014	4,440.21	43,553.32	39,113.11
01/03/2014-31/03/2014	4,354.55	42,331.46	37,976.91
01/04/2014-30/04/2014	1,889.90	16,512.85	14,622.96
01/05/2014-31/05/2014	1,568.15	13,701.60	12,133.46
01/06/2014-30/06/2014	1,718.59	15,016.10	13,297.52
Total	18,270.18	173,205.94	154,935.78

For details of calculation of contributing ERs, please see the worksheet “CER Calculation (PL Calculation)” in the CER calculation spreadsheet.

E.4. Summary of calculation of emission reductions or net GHG removals by sinks

Item	Baseline emissions or baseline net GHG removals by sinks (t CO ₂ e)	Project emissions or actual net GHG removals by sinks (t CO ₂ e)	Leakage (t CO ₂ e)	GHG emission reductions or net GHG removals by sinks (t CO ₂ e) achieved in the monitoring period		
				Up to 31/12/2012	From 01/01/2013	Total amount
Total	1,972,443.66	183,510.57	154,935.78	0	1,633,994	1,633,994

Therefore, the emission reductions resulting from the actually measured values are **1,633,994** tCO₂e.

E.5. Comparison of actual emission reductions or net GHG removals by sinks with estimates in registered PDD

Item	Values estimated in ex ante calculation of registered PDD	Actual values achieved during this monitoring period
Emission reductions or GHG removals by sinks (t CO ₂ e)	1,735,930	1,633,994

E.6. Remarks on difference from estimated value in registered PDD

>>

The ER volume based on the actual monitored values is 1,633,994 tCO₂e, 5.87%⁸ lower than the ex-ante estimation according to the registered PDD.

⁸ Based on the GWPC_{H4} is 25tCO₂e/tCH₄, the expected ER in the registered PDD is calculated as 3,500,632tCO₂e/year. Hence, the expected value during this monitoring period is 3,500,632 tCO₂e *181day/365day, which is 1,735,930tCO₂e. Refer the ER sheet for detail.

Appendix 1. Contact information of project participants and responsible persons/entities

Project participant and/or responsible person/ entity	<input checked="" type="checkbox"/> Project participant <input type="checkbox"/> Person/entity responsible for completing the CDM-MR-FORM
Organization name	Shanxi Jincheng Anthracite Mining Group Co., Ltd.
Street/P.O. Box	Beishidian
Building	
City	Jincheng
State/region	Shanxi
Postcode	048006
Country	China
Telephone	86-356-3669561
Fax	86-356-3669562
E-mail	jmjtcdm@163.com
Website	
Contact person	Zhang Shuhui
Title	
Salutation	
Last name	Zhang
Middle name	
First name	Shuhui
Department	
Mobile	
Direct fax	86-356-3669562
Direct tel.	86-356-3669561
Personal e-mail	

- - - - -

Document information

<i>Version</i>	<i>Date</i>	<i>Description</i>
05.1	4 May 2015	Editorial revision to correct version numbering.
05.0	1 April 2015	Revisions to: <ul style="list-style-type: none"> • Include provisions related to delayed submission of a monitoring plan; • Provisions related to the Host Party; • Remove reference to programme of activities; • Overall editorial improvement.
04.0	25 June 2014	Revisions to: <ul style="list-style-type: none"> • Include the Attachment: Instructions for filling out the monitoring report form (these instructions supersede the "Guideline: Completing the monitoring report form" (Version 04.0)); • Include provisions related to standardized baselines; • Add contact information on a responsible person(s)/ entity(ies) for completing the CDM-MR-FORM in A.6 and Appendix 1; • Change the reference number from <i>F-CDM-MR</i> to <i>CDM-MR-FORM</i>; • Editorial improvement.
03.2	5 November 2013	Editorial revision to correct table in page 1.
03.1	2 January 2013	Editorial revision to correct table in section E.5.
03.0	3 December 2012	Revision required to introduce a provision on reporting actual emission reductions or net GHG removals by sinks for the period up to 31 December 2012 and the period from 1 January 2013 onwards (EB70, Annex 11).
02.0	13 March 2012	Revision required to ensure consistency with the "Guidelines for completing the monitoring report form" (EB 66, Annex 20).
01	28 May 2010	EB 54, Annex 34. Initial adoption.
Decision Class: Regulatory Document Type: Form Business Function: Issuance Keywords: monitoring report		