

**CLEAN DEVELOPMENT MECHANISM  
PROJECT DESIGN DOCUMENT FORM (CDM-SSC-PDD)  
Version 03 - in effect as of: 22 December 2006**

**CONTENTS**

- A. General description of the small scale project activity
- B. Application of a baseline and monitoring methodology
- C. Duration of the project activity / crediting period
- D. Environmental impacts
- E. Stakeholders' comments

**Annexes**

Annex 1: Contact information on participants in the proposed small scale project activity

Annex 2: Information regarding public funding

Annex 3: Baseline information

Annex 4: Monitoring Information

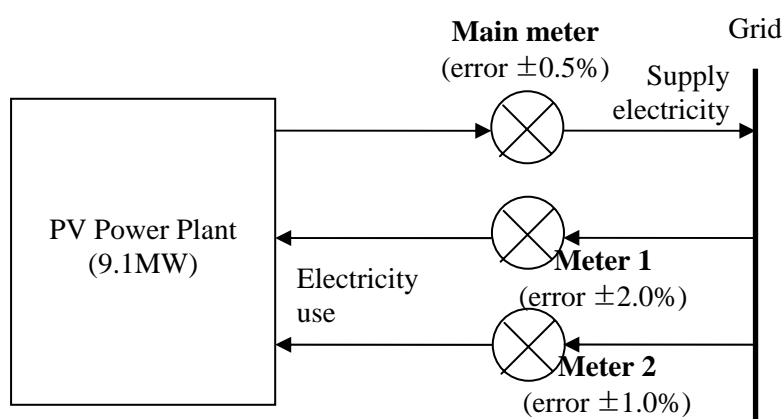
**Revision history of this document**

<b>Version Number</b>	<b>Date</b>	<b>Description and reason of revision</b>
01	21 January 2003	Initial adoption
02	8 July 2005	<ul style="list-style-type: none"><li>• The Board agreed to revise the CDM SSC PDD to reflect guidance and clarifications provided by the Board since version 01 of this document.</li><li>• As a consequence, the guidelines for completing CDM SSC PDD have been revised accordingly to version 2. The latest version can be found at <a href="http://cdm.unfccc.int/Reference/Documents">http://cdm.unfccc.int/Reference/Documents</a>.</li></ul>
03	22 December 2006	<ul style="list-style-type: none"><li>• The Board agreed to revise the CDM project design document for small-scale activities (CDM-SSC-PDD), taking into account CDM-PDD and CDM-NM.</li></ul>

CDM – Executive Board

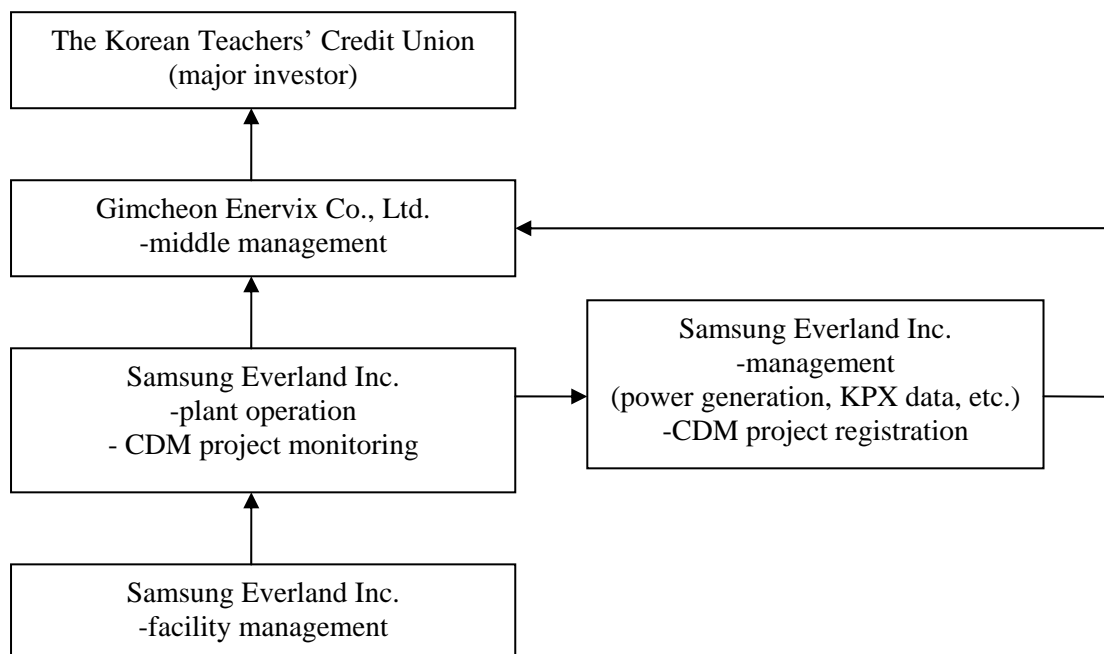
**B.7 Application of a monitoring methodology and description of the monitoring plan:****B.7.1 Data and parameters monitored:**

<b>Data / Parameter:</b>	<b>EGy</b>
<b>Data unit:</b>	MWh
<b>Description:</b>	Net electricity generate and delivered to the grid by the project activity
<b>Source of data to be used:</b>	Actual measurement
<b>Value of data</b>	13,324MWh/yr
<b>Description of measurement methods and procedures to be applied:</b>	Read from a watt-hour meter
<b>QA/QC procedures to be applied:</b>	<ul style="list-style-type: none"> <li>-Uncertainty is low</li> <li>-A measuring instrument will be calibrated every 2 years.</li> <li>-QA/QC guidance and procedure will follow Measures Act and Rules on Electricity Market Management and monitoring manual.</li> </ul>
<b>Any comment:</b>	<ul style="list-style-type: none"> <li>-Data will be kept for 2 years after the end of the crediting period.</li> <li>-Data will be measured hourly and recorded monthly.</li> <li>-Measured data will be double checked against receipt of sales.</li> <li>-Electricity supplied from the grid to the project site will be monitored and it will be subtracted from total electricity generation.</li> </ul>

**B.7.2 Description of the monitoring plan:**

The amount of electricity used at the site is measured by meter 1 and meter 2. Meter 1 measures the amount of electricity which is for industrial use such as inverter operation. Meter 2 which was added after CDM registration measures the amount of general electricity use which is supplied to street lights, security system, etc.

## CDM – Executive Board



The project participant, Gimcheon Enervix, has all authority and responsibility on the project activity and according to the O&M contract, Samsung Everland is going to operate and monitor the project by proxy instead of the project participant.

Responsible departments for the monitoring are as follows:

- total management : The Korean Teachers' Credit Union (major investor)

- middle management  
: Gimcheon Enervix Co., Ltd.

- plant operation and CDM project monitoring  
: Samsung Everland Inc.

- management (power generation, KPX data, etc.)  
: Samsung Everland Inc.

- facility management  
: Samsung Everland Inc.

- CDM project registration  
: Samsung Everland Inc.