

**CLEAN DEVELOPMENT MECHANISM
PROJECT DESIGN DOCUMENT FORM (CDM-SSC-PDD)
Version 03 - in effect as of: 22 December 2006**

CONTENTS

- A. General description of the small scale project activity
- B. Application of a baseline and monitoring methodology
- C. Duration of the project activity / crediting period
- D. Environmental impacts
- E. Stakeholders' comments

Annexes

Annex 1: Contact information on participants in the proposed small scale project activity

Annex 2: Information regarding public funding

Annex 3: Baseline information

Annex 4: Monitoring Information

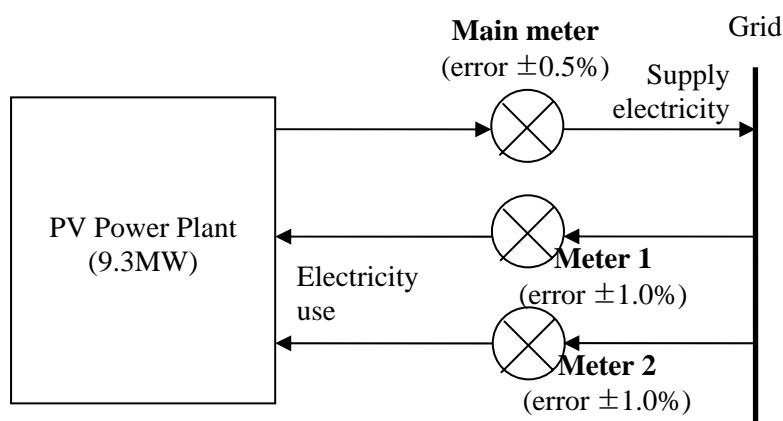
Revision history of this document

Version Number	Date	Description and reason of revision
01	21 January 2003	Initial adoption
02	8 July 2005	<ul style="list-style-type: none">● The Board agreed to revise the CDM SSC PDD to reflect guidance and clarifications provided by the Board since version 01 of this document.● As a consequence, the guidelines for completing CDM SSC PDD have been revised accordingly to version 2. The latest version can be found at http://cdm.unfccc.int/Reference/Documents.
03	22 December 2006	<ul style="list-style-type: none">● The Board agreed to revise the CDM project design document for small-scale activities (CDM-SSC-PDD), taking into account CDM-PDD and CDM-NM.

CDM – Executive Board

B.7 Application of a monitoring methodology and description of the monitoring plan:**B.7.1 Data and parameters monitored:**

Data / Parameter:	EGy
Data unit:	MWh
Description:	Net electricity generate and delivered to the grid by the project activity
Source of data to be used:	Actual measurement
Value of data	12,835MWh/yr
Description of measurement methods and procedures to be applied:	Read from a watt-hour meter
QA/QC procedures to be applied:	<ul style="list-style-type: none"> -Uncertainty is low -A measuring instrument will be calibrated every 2 years. -QA/QC guidance and procedure will follow Measures Act and Rules on Electricity Market Management and monitoring manual.
Any comment:	<ul style="list-style-type: none"> -Data will be kept for 2 years after the end of the crediting period. -Data will be measured hourly and recorded monthly. -Measured data will be double checked against receipt of sales. -Electricity supplied from the grid to the project site will be monitored and it will be subtracted from total electricity generation.

B.7.2 Description of the monitoring plan:

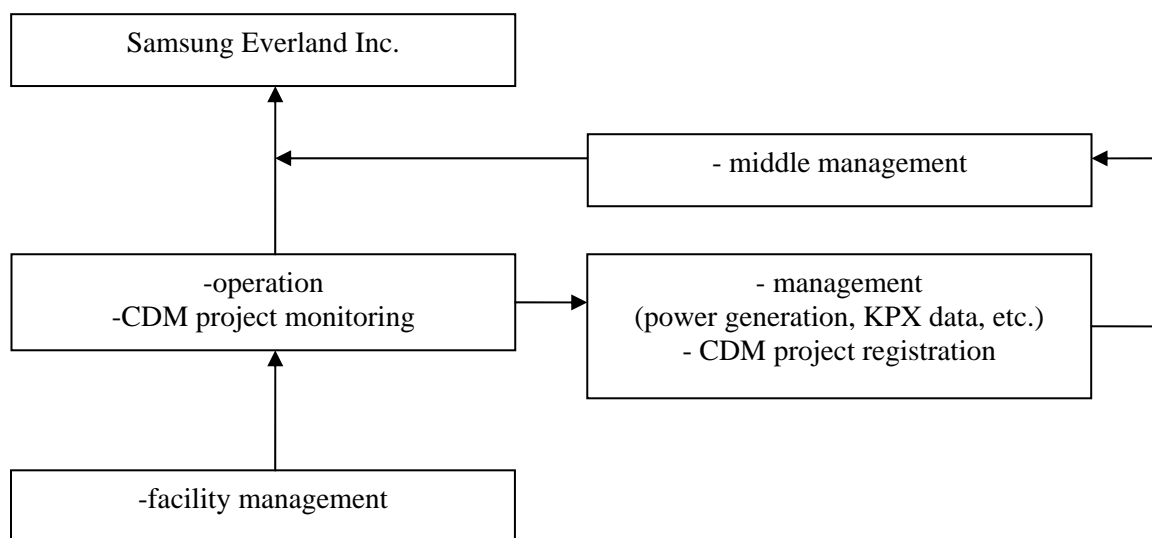
The amount of electricity used at the site is measured by meter 1 and meter 2.

A meter which had been installed since the starting date of the plant was replaced with Meter 1 and Meter 2 after requesting registration.

Meter 1 measures the amount of electricity which is for industrial use such as inverter operation.

Meter 2 measures the amount of general electricity use which is supplied to street lights, security system, an office, etc.

CDM – Executive Board



Sales Support Team is in charge of all tasks related to this project (operation, management, monitoring etc.).

Responsible department and person for the monitoring are as follows:

- total management : Samsung Everland Inc.
- middle management : Sales Support Team
- operation and CDM project monitoring: Sales Support Team
- management (power generation, KPX data, etc.)
: Sales Support Team
- facility management : Sales Support Team
- CDM project registration : Sales Support Team