



**Monitoring report form for CDM project activity  
(Version 09.0)**

*Complete this form in accordance with the instructions attached at the end of this form.*

**MONITORING REPORT**

<b>Title of the project activity</b>	Catalytic N <sub>2</sub> O destruction project in the tail gas of three Nitric Acid Plants at Hu-Chems Fine Chemical Corp.		
<b>UNFCCC reference number of the project activity</b>	0765		
<b>Version number of the PDD applicable to this monitoring report</b>	05.1		
<b>Version number of this monitoring report</b>	01.0		
<b>Completion date of this monitoring report</b>	14/12/2021		
<b>Monitoring period number</b>	52		
<b>Duration of this monitoring period</b>	26/07/2021 – 30/11/2021		
<b>Monitoring report number for this monitoring period</b>	N/A		
<b>Project participants</b>	Hu-Chems Fine Chemical Corp. RWE Power AG Carbon Climate Protection GmbH		
<b>Host Party</b>	Republic of Korea		
<b>Applied methodologies and standardized baselines</b>	ACM0019 Version 04.0 (N <sub>2</sub> O abatement from nitric acid production)  No standardized baselines applicable.		
<b>Sectoral scopes</b>	5 – Chemical industries		
<b>Amount of GHG emission reductions or net anthropogenic GHG removals achieved by the project activity in this monitoring period</b>	Amount achieved before 1 January 2013	Amount achieved from 1 January 2013 until 31 December 2020	Amount achieved from 1 January 2021
	N/A	N/A	404,124 tCO <sub>2</sub> e
<b>Amount of GHG emission reductions or net anthropogenic GHG removals estimated ex ante for this monitoring period in the PDD</b>	437,610 tCO <sub>2</sub> e		

## SECTION A. Description of project activity

### A.1. General description of project activity

>>

Project participants implemented a project for GHG emission reduction by catalytic N<sub>2</sub>O destruction in Yeosu, Republic of Korea. The project is categorized as large-scale project under sectoral scope 5 – Chemical Industries. The Host Party is the Republic of Korea. The project activity includes development, design, engineering, procurement, finance, construction, operation and maintenance of a system for catalytic reduction of N<sub>2</sub>O in three nitric acid (furthermore called “NA”) plants at Hu-Chems Fine Chemical Corp. (furthermore called “Hu-Chems”).

In this project, three EnviNOx® systems for catalytic reduction and decomposition of NO<sub>x</sub> and N<sub>2</sub>O additionally to the equipment at the three NA manufacturing plants (Hu-Chems II, III + IV) were installed. The project activity reduces the GHG emissions, which would otherwise be released to the atmosphere, if the project was not implemented. The EnviNOx® process used in NA plants Hu-Chems II + III is based on the catalytic reduction of NO<sub>x</sub> (NO and NO<sub>2</sub>) with ammonia (NH<sub>3</sub>) and of nitrous oxide (N<sub>2</sub>O) with a hydrocarbon. The hydrocarbon used is Liquefied Petroleum Gas (LPG), of which the main constituent is propane (C<sub>3</sub>H<sub>8</sub>). The reactions take place over an iron zeolite catalyst bed. The EnviNOx® process used in NA plant Hu-Chems IV is based on the catalytic decomposition of nitrous oxide (N<sub>2</sub>O) and the catalytic reduction of NO<sub>x</sub> (NO and NO<sub>2</sub>) with ammonia (NH<sub>3</sub>). This process works very well at temperatures above about 425°C. The reactions take place over two iron zeolite catalyst beds and do not involve hydrocarbons.

### A.2. Location of project activity

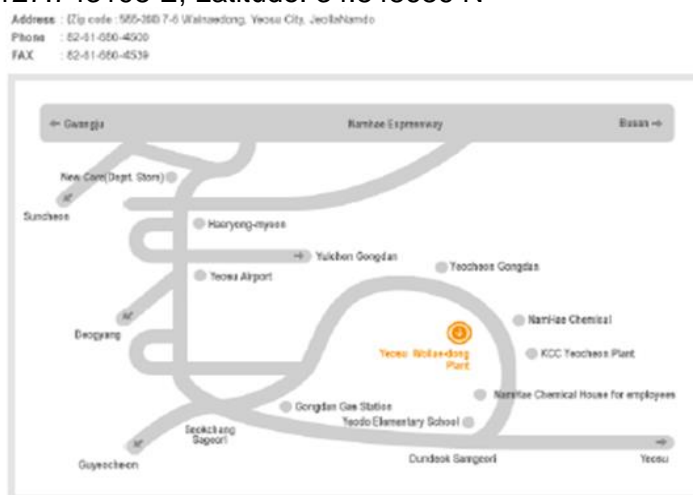
>>

Country (Host): Republic of Korea

Province: Jeonam-do

Town: Yeosu-si, 7-6, Wollae-dong

Unique geographic coordinates: Longitude: 127.743198 E, Latitude: 34.848686 N



### A.3. Parties and project participants

Parties involved	Project participants	Indicate if the Party involved wishes to be considered as project participant (Yes/No)
Republic of Korea (Host Party)	Hu-Chems Fine Chemical Corp.	No
Federal Republic Germany	RWE Power AG	No
Austria	Carbon Climate Protection GmbH	No

**A.4. References to applied methodologies and standardized baselines**

&gt;&gt;

Applied methodology: ACM0019 version 04.0 (N<sub>2</sub>O abatement from nitric acid production)<sup>1</sup>

The applied methodology refers to “Tool to determine the mass flow of a greenhouse gas in a gaseous stream”, version 03.0<sup>2</sup> and to “Tool to calculate project or leakage CO<sub>2</sub> emissions from fossil fuel combustion”, version 03.0<sup>3</sup>. Thus, both tools are applied in this project activity.

No standardized baselines are used according to the applied methodology.

**A.5. Crediting period type and duration**

&gt;&gt;

Type of the crediting period:	Renewable (3 x 7 years) The project is currently in its 3 <sup>rd</sup> crediting period.
Starting date of the 3 <sup>rd</sup> crediting period:	22/01/2021
End date of the 3 <sup>rd</sup> crediting period:	21/01/2028

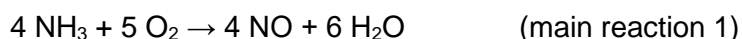
**SECTION B. Implementation of project activity****B.1. Description of implemented project activity**

&gt;&gt;

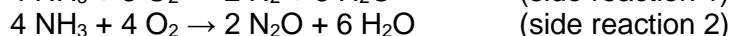
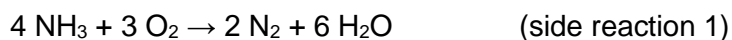
**(a) Description of the installed technology, technical processes and equipment****General description:**

Nitrous oxide (N<sub>2</sub>O) is an unwanted, invisible and previously neglected by-product of the manufacture of NA. It is formed alongside the main, desired product nitric oxide (NO) during the catalytic oxidation of ammonia in air over noble metal gauzes. The production of NA takes place in three main process steps as indicated by the following reactions:

1. Ammonia (NH<sub>3</sub>) combustion to form nitric oxide (NO)<sup>4</sup>:



Simultaneously nitrous oxide (N<sub>2</sub>O), nitrogen (N) and water (H<sub>2</sub>O) are formed as well, in accordance with the following equations:



NO yield mainly depends on pressure and temperature in the ammonia oxidation process and is usually in a range of 95% to 97%.

2. NO is oxidised to nitrogen dioxide (NO<sub>2</sub>):



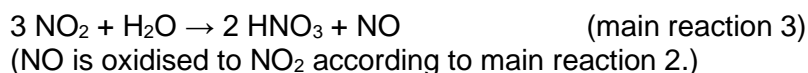
3. (According to the technical process) Absorption of NO<sub>2</sub> in water to form NA (HNO<sub>3</sub>):

<sup>1</sup> <https://cdm.unfccc.int/methodologies/DB/HKCO7RKOQO748WNXJNDEW3BJT9XN8L>

<sup>2</sup> <https://cdm.unfccc.int/methodologies/PAMethodologies/tools/am-tool-08-v3.0.pdf>

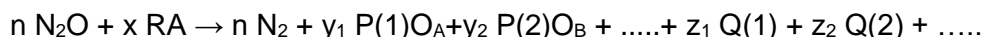
<sup>3</sup> <https://cdm.unfccc.int/methodologies/PAMethodologies/tools/am-tool-03-v3.pdf>

<sup>4</sup> Ammonia is reacted with air on noble metal catalyst in the oxidation section of NA plants. Nitric oxide and water are formed in this process according to the above-mentioned main equation.



- Description of catalytic reduction process

Although the term catalytic reduction nowadays has a more general definition in terms of the transfer of electrons, the following definition is sufficient for present purposes: catalytic reduction of N<sub>2</sub>O occurs when reactions take place between N<sub>2</sub>O and other substances in contact with a catalyst, such that the oxygen is removed from the N<sub>2</sub>O molecule and forms one or more compounds with other species. The substance or substances that react with N<sub>2</sub>O to remove oxygen are termed reducing agent. A general reaction equation for the catalytic reduction of N<sub>2</sub>O can be given as:



Where RA is a molecule of the reducing agent, P(1)O<sub>A</sub>, P(2)O<sub>B</sub> are the compound formed by reaction with the oxygen of the N<sub>2</sub>O and Q(1), Q(2) represent further products of the oxidation reaction, n, x, y<sub>1</sub>, y<sub>2</sub>, z<sub>1</sub>, z<sub>2</sub> are the appropriate stoichiometric coefficients.

Equation reduction N<sub>2</sub>O with propane:



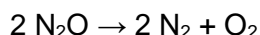
The definition does not exclude the possibility of side reactions resulting in consumption of reducing agent without any reduction of N<sub>2</sub>O, for example with propane:



- Description of catalytic decomposition process

Catalytic decomposition of N<sub>2</sub>O occurs when the N<sub>2</sub>O is split into its constituent elements by contact with a catalyst. A catalyst is a material, which accelerates the speed of the reaction without itself being transformed or consumed by the reaction.

Overall reaction:



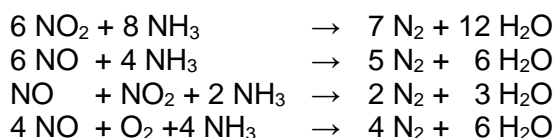
The products of N<sub>2</sub>O decomposition are the substances that result from the reaction (N<sub>2</sub> and O<sub>2</sub>).

### **Project specific description:**

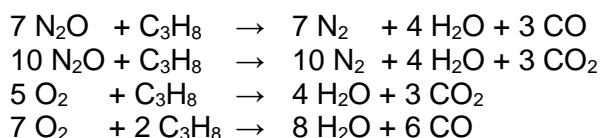
- Principles of the EnviNOx® process in NA plants Hu-Chems II + III

The EnviNOx® process is based on the catalytic reduction of NO<sub>x</sub> (NO, NO<sub>2</sub>) with ammonia (NH<sub>3</sub>) and of nitrous oxide (N<sub>2</sub>O) with a hydrocarbon. The hydrocarbon used is propane gas, of which the main constituent is propane (C<sub>3</sub>H<sub>8</sub>). The reactions take place over an iron zeolite catalyst bed.

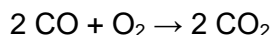
First the NO<sub>x</sub> is reduced with ammonia according to such reactions as:



Effectively almost all the NO<sub>x</sub> is removed. Some destruction of N<sub>2</sub>O also occurs. Second, the nitrous oxide is reduced with hydrocarbons over the iron zeolite according to such reactions as:



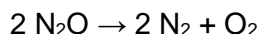
Similar reactions take place between nitrous oxide and the small quantities of other hydrocarbons such as butane (C<sub>4</sub>H<sub>10</sub>) that are present in the commercial propane used. N<sub>2</sub>O reduction by these reactions is much more effective when NO<sub>x</sub> is absent. A large proportion of the carbon monoxide that is formed is further oxidised to carbon dioxide over a second EnviCat®-CO / CH catalyst installed in the EnviNOx® reactor downstream of the first catalyst:



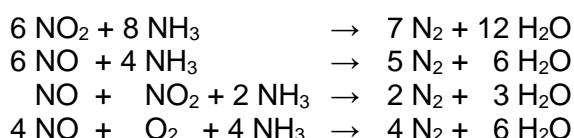
All the above reactions are exothermic and cause a temperature rise over the EnviNOx® reactor. Compared with the reduction in greenhouse gas emission achieved by the destruction of N<sub>2</sub>O the additional greenhouse gas emissions (CO<sub>2</sub>) caused by the use of hydrocarbons in the process are insignificant but are monitored.

- Principles of the EnviNOx® process Hu-Chems IV

The EnviNOx® process is based on the catalytic decomposition of nitrous oxide (N<sub>2</sub>O) and the catalytic reduction of NO<sub>x</sub> (NO and NO<sub>2</sub>) with ammonia (NH<sub>3</sub>). This process works well at temperatures above about 425°C. The reactions take place over two iron zeolite catalyst beds. In the first bed N<sub>2</sub>O is catalytically decomposed:



This rate of this reaction is enhanced by high concentrations of NO<sub>x</sub>. Before the tail gas enters the second catalyst bed, a small quantity of ammonia vapour is added. In the second bed a large part of the NO<sub>x</sub> is reduced with ammonia according to such reactions as:



Some further destruction of N<sub>2</sub>O also occurs. All the above reactions are exothermic and cause a temperature rise over the EnviNOx® reactor. The consumption of ammonia corresponds to the stoichiometric ratio given in the reaction equations above and does not differ significantly from the consumption of a conventional DeNOx unit.

- Technology employed by the project activity

In this project, three EnviNOx® systems for catalytic reduction and decomposition of NO<sub>x</sub> and N<sub>2</sub>O additionally to the equipment at the three NA manufacturing plants were installed. The project activity reduces the GHG emissions, which would otherwise be released to the atmosphere, if the project was not implemented. The implementation of the N<sub>2</sub>O destruction project at Hu-Chems II + III involves that propane is employed as a reducing agent for N<sub>2</sub>O removal.

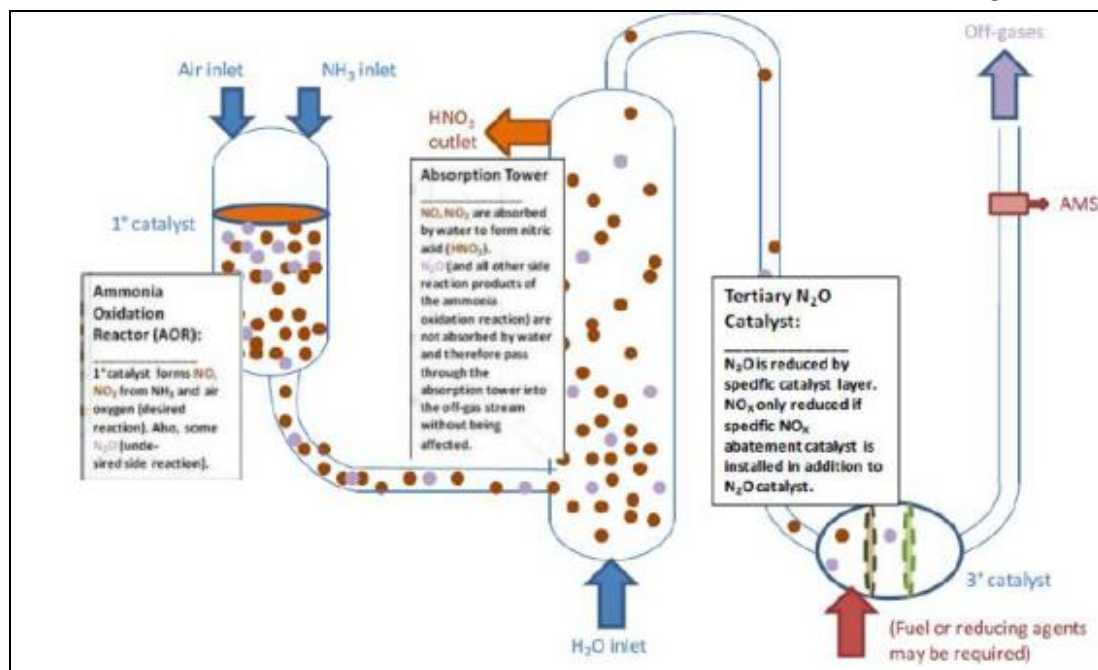
- Location of the EnviNOx® systems

*Hu-Chems II:* The new EnviNOx® reactor (322-R-202) is located between the existing SCR DeNOx reactor (322-R-201) and the tail gas turbine (322-C-201-T2), which is the position with the highest tail gas temperature in the NA production process.

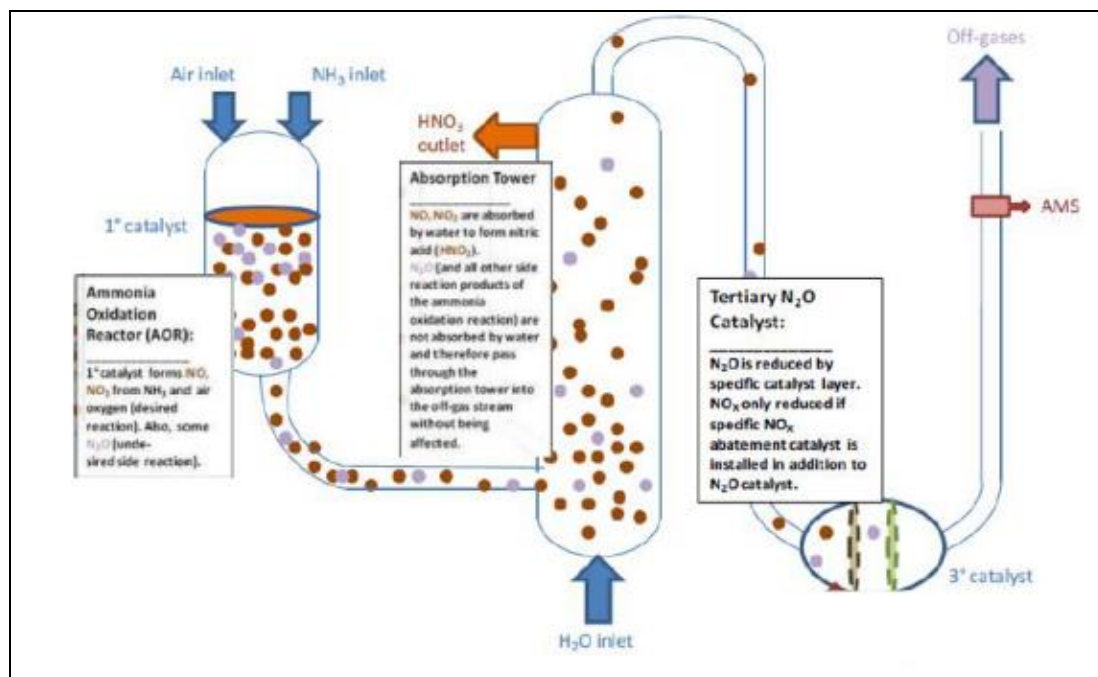
*Hu-Chems III:* The new EnviNOx® reactor (323-R-302) is located between the existing SCR DeNOx reactor (323-R-301) and the tail gas turbine (323-C-301-T2), which is the position with the highest tail gas temperature in the NA production process.

*Hu-Chems IV:* The new EnviNOx® reactor (324-R-402) is located upstream of the tail gas turbine (324-C-401-T2) at the position with the highest tail gas temperature in the NA production process. The SCR DeNOx reactor, which was in operation prior to the CDM project activity, has been de-commissioned.

The following figures show the spatial extent of the project boundary:



Project boundary Hu-Chems II + III



Project boundary Hu-Chems IV

**(b) Information on the implementation and actual operation of the project activity, including relevant dates**

The project covers three NA plants (three EnviNOx® systems respectively). The EnviNOx® system at Hu-Chems IV was installed in December 2006, the EnviNOx® systems at Hu-Chems II + III were installed in February and March 2007. The starting dates of operation of the project activity for each of the plant were as follows (1<sup>st</sup> crediting period of project activity):

- NA plant Hu-Chems II: 26 March 2007
- NA plant Hu-Chems III: 29 March 2007
- NA plant Hu-Chems IV: 9 January 2007

The project has been implemented and is operated as per the registered PDD with all physical features (technology, project equipment, monitoring and metering equipment) in place. Monitoring is done according to the applied methodology (ACM0019 v.04.0) and registered monitoring plan. During this monitoring period several observations were made, which have been analysed in detail as described hereunder. It should be noted that actual hours as given in the Excel book attached to this MR are to be read as follows: e.g. 01/01/2020, 01:00 summarizes the hour from 01/01/2020 00:00 to 01:00. The time as given in the tables below is expressed in this regard.:

- Downtimes of NA plant & EnviNOx® system (no ERs were claimed during these hours)

Plant	Start Date & Time		End Date & Time		Observation & Reason
II	18/08/2021	06:00	22/08/2021	05:00	NA plant shutdown (Gauze change)
II	23/10/2021	19:00	31/10/2021	16:00	NA plant shutdown (Electrical works)
Plant	Start Date & Time		End Date & Time		Observation & Reason
III	05/10/2021	01:00	06/10/2021	01:00	NA plant shutdown (Gauze change)
III	23/10/2021	22:00	29/10/2021	22:00	NA plant shutdown (Electrical works)
III	12/11/2021	19:00	13/11/2021	01:00	NA plant shutdown (Leakage in NOx gas pipe)
Plant	Start Date & Time		End Date & Time		Observation & Reason
IV	13/09/2021	02:00	14/09/2021	20:00	NA plant shutdown (Gauze change)
IV	24/10/2021	02:00	30/10/2021	02:00	NA plant shutdown (Electrical works)

- Observations related to the operation of EnviNOx® systems and AMS

*Observations in Hu-Chems II:*

Date	Time	Date	Time	Observation, Reason & Conservative Action
22/08/2021	05:00	22/08/2021	13:00	Observation: N <sub>2</sub> O outlet concentration out of range Reason: No/low reducing agents' input to EnviNOx® unit after NA plant shutdown Conservative action: Recalculation of $v_{i,t,db}$ by equating N <sub>2</sub> O outlet concentration with upper range of N <sub>2</sub> O inlet concentration
24/08/2021	10:00	24/08/2021	12:00	Observation: Fluctuation of N <sub>2</sub> O outlet concentration Reason: Monthly health check by EMERSON Conservative action: Recalculation of $v_{i,t,db}$ by applying max. value of MP (in accordance with ACM0019 & the PDD)
16/09/2021	06:00	16/09/2021	10:00	Observation: Fluctuation of fossil fuel input Reason: Fossil fuel DCS module update Conservative action: Recalculation of $FC_{i,j,y}$ by applying max. value of MP
28/09/2021	10:00	28/09/2021	15:00	Observation: Fluctuation of N <sub>2</sub> O outlet concentration Reason: Monthly health check by EMERSON Conservative action: Recalculation of $v_{i,t,db}$ by applying max. value of MP (in accordance with ACM0019 & the PDD)
22/10/2021	11:00	22/10/2021	15:00	Observation: Fluctuation of N <sub>2</sub> O outlet concentration Reason: Quarterly inspection & health check by EMERSON Conservative action: Recalculation of $v_{i,t,db}$ by applying max. value of MP (in accordance with ACM0019 & the PDD)
23/10/2021	12:00	23/10/2021	19:00	Observation: N <sub>2</sub> O outlet concentration out of range Reason: No/low reducing agents' input to EnviNOx® unit before NA plant shutdown Conservative action: Recalculation of $v_{i,t,db}$ by equating N <sub>2</sub> O outlet concentration with upper range of N <sub>2</sub> O inlet concentration
31/10/2021	16:00	31/10/2021	19:00	Observation: N <sub>2</sub> O outlet concentration out of range Reason: No/low reducing agents' input to EnviNOx® unit after NA plant shutdown Conservative action: Recalculation of $v_{i,t,db}$ by equating N <sub>2</sub> O outlet concentration with upper range of N <sub>2</sub> O inlet concentration

22/11/2021	10:00	22/11/2021	14:00	Observation: Fluctuation of N <sub>2</sub> O outlet concentration Reason: Monthly health check by EMERSON Conservative action: Recalculation of $v_{i,t,db}$ by applying max. value of MP (in accordance with ACM0019 & the PDD)
23/11/2021	10:00	23/11/2021	11:00	Observation: Fluctuation of N <sub>2</sub> O outlet concentration Reason: Monthly health check by EMERSON Conservative action: Recalculation of $v_{i,t,db}$ by applying max. value of MP (in accordance with ACM0019 & the PDD)

*Observations in Hu-Chems III:*

Date	Time	Date	Time	Observation, Reason & Conservative Action
24/08/2021	09:00	24/08/2021	14:00	Observation: Fluctuation of N <sub>2</sub> O outlet concentration Reason: Monthly health check by EMERSON Conservative action: Recalculation of $v_{i,t,db}$ by applying max. value of MP (in accordance with ACM0019 & the PDD)
28/09/2021	10:00	28/09/2021	15:00	Observation: Fluctuation of N <sub>2</sub> O outlet concentration Reason: Monthly health check by EMERSON Conservative action: Recalculation of $v_{i,t,db}$ by applying max. value of MP (in accordance with ACM0019 & the PDD)
04/10/2021	19:00	05/10/2021	01:00	Observation: N <sub>2</sub> O outlet concentration out of range Reason: No/low reducing agents' input to EnviNOx® unit before NA plant shutdown Conservative action: Recalculation of $v_{i,t,db}$ by equating N <sub>2</sub> O outlet concentration with upper range of N <sub>2</sub> O inlet concentration
06/10/2021	01:00	06/10/2021	02:00	Observation: N <sub>2</sub> O outlet concentration out of range Reason: No/low reducing agents' input to EnviNOx® unit after NA plant shutdown Conservative action: Recalculation of $v_{i,t,db}$ by equating N <sub>2</sub> O outlet concentration with upper range of N <sub>2</sub> O inlet concentration
13/10/2021	13:00	21/10/2021	14:00	Observation: Expired calibration gas of analyser Reason: - Conservative action: Recalculation of $v_{i,t,db}$ by applying max. permissible error of transmitter
22/10/2021	10:00	22/10/2021	15:00	Observation: Fluctuation of N <sub>2</sub> O outlet concentration Reason: Quarterly inspection & health check by EMERSON Conservative action: Recalculation of $v_{i,t,db}$ by applying max. value of MP (in accordance with ACM0019 & the PDD)
23/10/2021	12:00	23/10/2021	22:00	Observation: N <sub>2</sub> O outlet concentration out of range Reason: No/low reducing agents' input to EnviNOx® unit before NA plant shutdown Conservative action: Recalculation of $v_{i,t,db}$ by equating N <sub>2</sub> O outlet concentration with upper range of N <sub>2</sub> O inlet concentration
29/10/2021	22:00	30/10/2021	01:00	Observation: N <sub>2</sub> O outlet concentration out of range Reason: No/low reducing agents' input to EnviNOx® unit after NA plant shutdown Conservative action: Recalculation of $v_{i,t,db}$ by equating N <sub>2</sub> O outlet concentration with upper range of N <sub>2</sub> O inlet concentration
13/11/2021	01:00	13/11/2021	02:00	Observation: N <sub>2</sub> O outlet concentration out of range Reason: No/low reducing agents' input to EnviNOx® unit after NA plant shutdown Conservative action: Recalculation of $v_{i,t,db}$ by equating N <sub>2</sub> O outlet concentration with upper range of N <sub>2</sub> O inlet concentration
22/11/2021	13:00	22/11/2021	14:00	Observation: Fluctuation of N <sub>2</sub> O outlet concentration Reason: Monthly health check by EMERSON Conservative action: Recalculation of $v_{i,t,db}$ by applying max. value of MP (in accordance with ACM0019 & the PDD)
23/11/2021	10:00	23/11/2021	11:00	Observation: Fluctuation of N <sub>2</sub> O outlet concentration Reason: Monthly health check by EMERSON



				Conservative action: Recalculation of $v_{i,t,db}$ by applying max. value of MP (in accordance with ACM0019 & the PDD)
--	--	--	--	--

*Observations in Hu-Chems IV:*

Date	Time	Date	Time	Observation, Reason & Conservative Action
26/07/2021	00:00	13/09/2021	02:00	Observation: Delayed calibration of 324-FT-4-5020 Reason: - Conservative action: Recalculation of $h_v$ by applying max. permissible error of transmitter
23/08/2021	13:00	23/08/2021	16:00	Observation: Fluctuation of N <sub>2</sub> O outlet concentration Reason: Monthly health check by EMERSON Conservative action: Recalculation of $v_{i,t,db}$ by applying max. value of MP (in accordance with ACM0019 & the PDD)
23/08/2021	20:00	24/08/2021	01:00	Observation: Fluctuation of N <sub>2</sub> O outlet concentration Reason: Analyser range disturbance Conservative action: Recalculation of $v_{i,t,db}$ by applying max. value of MP (in accordance with ACM0019 & the PDD)
07/09/2021	22:00	07/09/2021	23:00	Observation: Fluctuation of N <sub>2</sub> O outlet concentration Reason: Analyser range disturbance Conservative action: Recalculation of $v_{i,t,db}$ by applying max. value of MP (in accordance with ACM0019 & the PDD)
10/09/2021	09:00	10/09/2021	16:00	Observation: Fluctuation of N <sub>2</sub> O outlet concentration Reason: Analyser range disturbance Conservative action: Recalculation of $v_{i,t,db}$ by applying max. value of MP (in accordance with ACM0019 & the PDD)
11/09/2021	05:00	11/09/2021	07:00	Observation: Fluctuation of N <sub>2</sub> O outlet concentration Reason: Analyser range disturbance Conservative action: Recalculation of $v_{i,t,db}$ by applying max. value of MP (in accordance with ACM0019 & the PDD)
11/09/2021	14:00	11/09/2021	16:00	Observation: Fluctuation of N <sub>2</sub> O outlet concentration Reason: Analyser range disturbance Conservative action: Recalculation of $v_{i,t,db}$ by applying max. value of MP (in accordance with ACM0019 & the PDD)
12/09/2021	00:00	12/09/2021	07:00	Observation: Fluctuation of N <sub>2</sub> O outlet concentration Reason: Analyser range disturbance Conservative action: Recalculation of $v_{i,t,db}$ by applying max. value of MP (in accordance with ACM0019 & the PDD)
13/09/2021	01:00	13/09/2021	02:00	Observation: N <sub>2</sub> O outlet concentration out of range Reason: No/low reducing agents' input to EnviNOx® unit before NA plant shutdown Conservative action: Recalculation of $v_{i,t,db}$ by equating N <sub>2</sub> O outlet concentration with upper range of N <sub>2</sub> O inlet concentration
14/09/2021	20:00	14/09/2021	21:00	Observation: N <sub>2</sub> O outlet concentration out of range Reason: No/low reducing agents' input to EnviNOx® unit after NA plant shutdown Conservative action: Recalculation of $v_{i,t,db}$ by equating N <sub>2</sub> O outlet concentration with upper range of N <sub>2</sub> O inlet concentration
19/09/2021	08:00	19/09/2021	09:00	Observation: Fluctuation of N <sub>2</sub> O outlet concentration Reason: Analyser range disturbance Conservative action: Recalculation of $v_{i,t,db}$ by applying max. value of MP (in accordance with ACM0019 & the PDD)
27/09/2021	10:00	27/09/2021	14:00	Observation: Fluctuation of N <sub>2</sub> O outlet concentration Reason: Monthly health check by EMERSON Conservative action: Recalculation of $v_{i,t,db}$ by applying max. value of MP (in accordance with ACM0019 & the PDD)
21/10/2021	10:00	21/10/2021	15:00	Observation: Fluctuation of N <sub>2</sub> O outlet concentration Reason: Quarterly inspection & health check by EMERSON Conservative action: Recalculation of $v_{i,t,db}$ by applying max. value of MP (in accordance with ACM0019 & the PDD)

				accordance with ACM0019 & the PDD)
30/10/2021	02:00	30/10/2021	04:00	Observation: N <sub>2</sub> O outlet concentration out of range Reason: No/low reducing agents' input to EnviNOx® unit after NA plant shutdown Conservative action: Recalculation of $v_{i,t,db}$ by equating N <sub>2</sub> O outlet concentration with upper range of N <sub>2</sub> O inlet concentration
30/10/2021	02:00	03/11/2021	09:00	Observation: Fluctuation of HNO <sub>3</sub> flow Reason: HNO <sub>3</sub> flowmeter disturbance Conservative action: Recalculation of $P_{production,y}$ by applying min. value of MP
05/11/2021	00:00	05/11/2021	01:00	Observation: Fluctuation of N <sub>2</sub> O outlet concentration Reason: Analyser range disturbance Conservative action: Recalculation of $v_{i,t,db}$ by applying max. value of MP (in accordance with ACM0019 & the PDD)
05/11/2021	06:00	05/11/2021	11:00	Observation: Fluctuation of N <sub>2</sub> O outlet concentration Reason: Analyser range disturbance Conservative action: Recalculation of $v_{i,t,db}$ by applying max. value of MP (in accordance with ACM0019 & the PDD)
06/11/2021	03:00	06/11/2021	04:00	Observation: Fluctuation of N <sub>2</sub> O outlet concentration Reason: Analyser range disturbance Conservative action: Recalculation of $v_{i,t,db}$ by applying max. value of MP (in accordance with ACM0019 & the PDD)
06/11/2021	09:00	06/11/2021	10:00	Observation: Fluctuation of N <sub>2</sub> O outlet concentration Reason: Analyser range disturbance Conservative action: Recalculation of $v_{i,t,db}$ by applying max. value of MP (in accordance with ACM0019 & the PDD)
07/11/2021	06:00	07/11/2021	17:00	Observation: Fluctuation of N <sub>2</sub> O outlet concentration Reason: Analyser range disturbance Conservative action: Recalculation of $v_{i,t,db}$ by applying max. value of MP (in accordance with ACM0019 & the PDD)
08/11/2021	02:00	08/11/2021	15:00	Observation: Fluctuation of N <sub>2</sub> O outlet concentration Reason: Analyser range disturbance Conservative action: Recalculation of $v_{i,t,db}$ by applying max. value of MP (in accordance with ACM0019 & the PDD)
09/11/2021	04:00	09/11/2021	05:00	Observation: Fluctuation of N <sub>2</sub> O outlet concentration Reason: Analyser range disturbance Conservative action: Recalculation of $v_{i,t,db}$ by applying max. value of MP (in accordance with ACM0019 & the PDD)
09/11/2021	14:00	09/11/2021	16:00	Observation: Fluctuation of N <sub>2</sub> O outlet concentration Reason: Analyser range disturbance Conservative action: Recalculation of $v_{i,t,db}$ by applying max. value of MP (in accordance with ACM0019 & the PDD)
22/11/2021	10:00	22/11/2021	16:00	Observation: Fluctuation of N <sub>2</sub> O outlet concentration Reason: Monthly health check by EMERSON Conservative action: Recalculation of $v_{i,t,db}$ by applying max. value of MP (in accordance with ACM0019 & the PDD)

During the mentioned periods, the NA plants as well as the respective EnviNOx® system were in normal operation and emission reductions have been conservatively determined fully in line with the applied methodology and the monitoring plan – as described in section C. *Systematic Measures* of this MR.

- Calibration and maintenance

The maintenance methods and procedures as well as the calibration scheme for monitoring instruments used for CDM monitoring have been incorporated as part of ISO 9001 procedures and form an integral part of the systems and procedures of Hu-Chems. QA/QC of monitoring equipment is in full compliance with the monitoring methodology and the monitoring plan of the PDD. Details on exchange and/or calibration of instruments are mentioned under section D.2.

All measuring and analytical instruments are being calibrated as defined in the approved methodology ACM0019 v.04.0 as well as the monitoring plan and according to the supplier recommendations (i.e. Emerson Process Management). As pointed out in section C., Hu-Chems has mandated Emerson Process Management Korea (furthermore called “EPMK”) to execute additional regular calibration services and regular general maintenance services to safeguard accuracy and availability of the monitoring instruments related to the CDM project. Services are adapted to the annual shutdown schedule of the NA plants; valid calibration records for all relevant monitoring instruments are available and submitted to the DOE for verification (see section D.2).

As further pointed out in section C., the project participants have contracted EPMK to execute monthly onsite health checks and/or quarterly onsite inspection visits. System components, sampling system, analysers/measurement devices and the automated monitoring system (AMS) required for the monitoring of the CDM project are covered by these contracts. Regular health checks were conducted by EPMK in August, September, October and November 2021 and attest good condition and availability of the system (i.e. sampling system, analyser as well as AMS hard- and software and total Delta V DCS system).

Records of conducted maintenance activities and other performed services related to calibration and maintenance are available and submitted to the DOE for verification.

## **B.2. Post-registration changes**

### **B.2.1. Temporary deviations from the registered monitoring plan, applied methodologies, standardized baselines or other methodological regulatory documents**

>>

No such temporary deviation occurred during this monitoring period.

### **B.2.2. Corrections**

>>

No such corrections occurred since the start of the 3<sup>rd</sup> crediting period.

Refer to PRC-0765-003 (approved on 09/03/2018) for further information regarding corrections in previous crediting periods.

### **B.2.3. Changes to the start date of the crediting period**

>>

Prior to the start of this monitoring period, the start date of the 1<sup>st</sup> crediting period was changed from 15/12/2006 to 22/01/2007. This change was approved by the UNFCCC secretariat and made public on the relevant project view page.

### **B.2.4. Inclusion of monitoring plan**

>>

No such inclusion occurred during this monitoring period, neither to a previous monitoring period.

### **B.2.5. Permanent changes to the registered monitoring plan, or permanent deviation of monitoring from the applied methodologies, standardized baselines, or other methodological regulatory documents**

>>

No such permanent changes occurred during this monitoring period.

### B.2.6. Changes to project design

>>

No such changes occurred during this monitoring period.

#### B.2.7. Changes specific to afforestation or reforestation project activity

>>

N/A

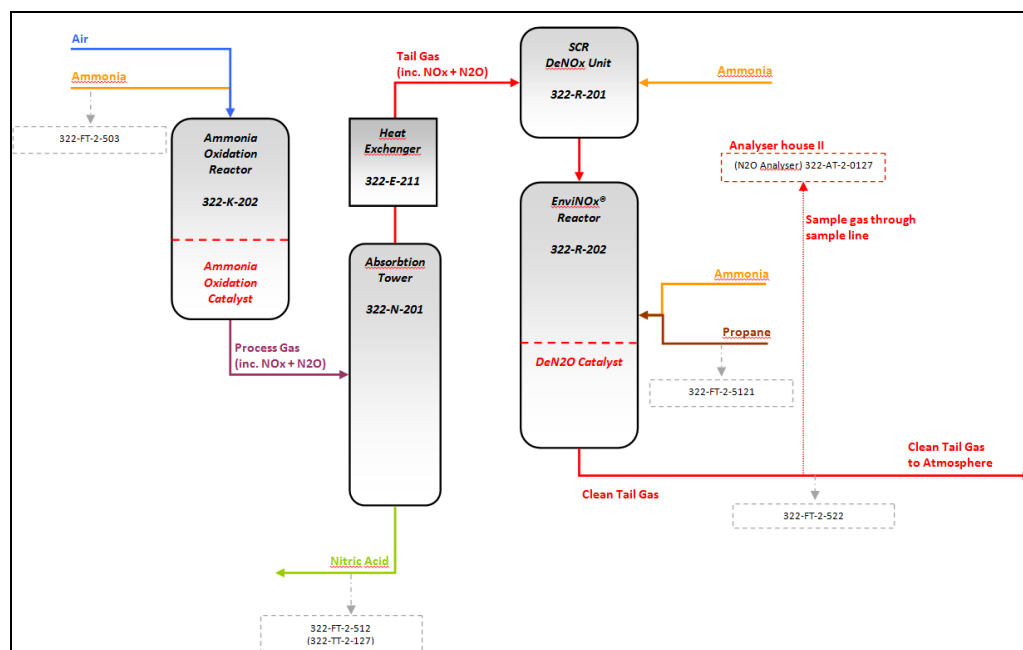
## SECTION C. Description of monitoring system

>>

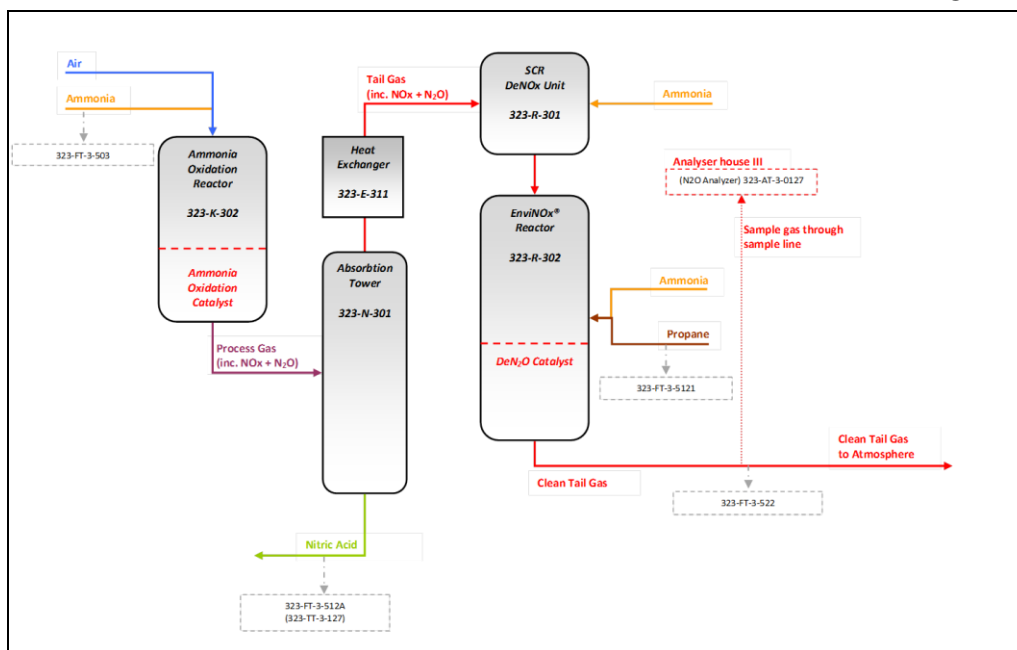
**(a) Information flow / data collection procedures**

The instruments transmitters continuously provide a 4 – 20 mA analogue signal according to range and units configured. These signals are transmitted to I/O cards (analogue input/output cards) and collected by the Delta V processor. Resulting digital values are made available in the network to be further processed (e.g. in controller blocks, calculation of other variables) and are stored as raw data in the protected continuous historian server.

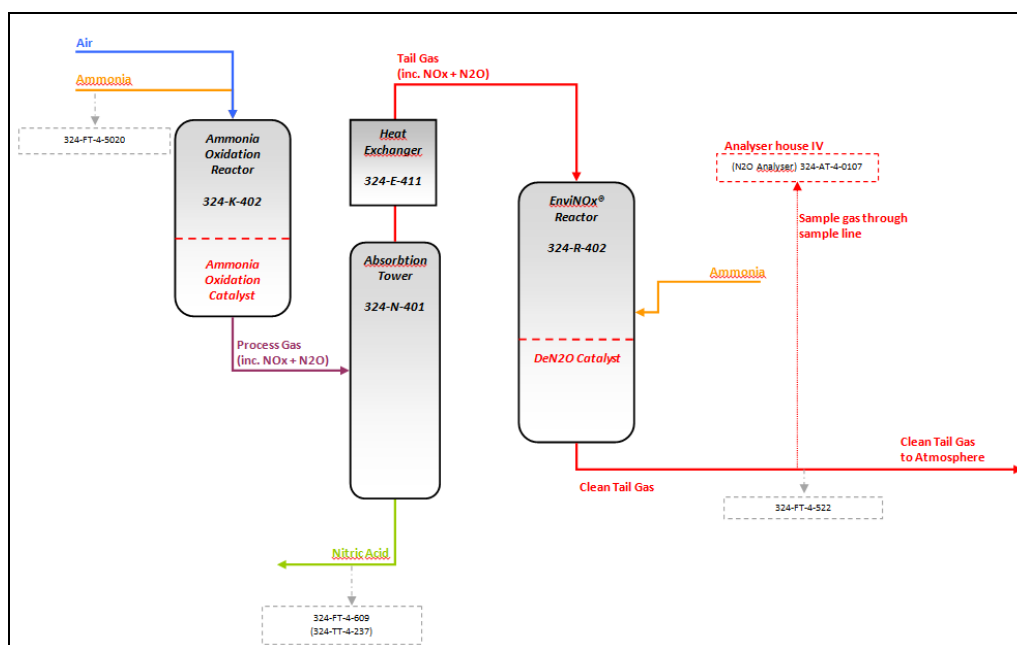
Modifications of the Delta V, which are protected by security levels by the supplier, are tracked by a Version Control Tool.



Line diagram incl. the location of the monitoring instruments / Hu-Chems II



Line diagram incl. the location of the monitoring instruments / Hu-Chems III



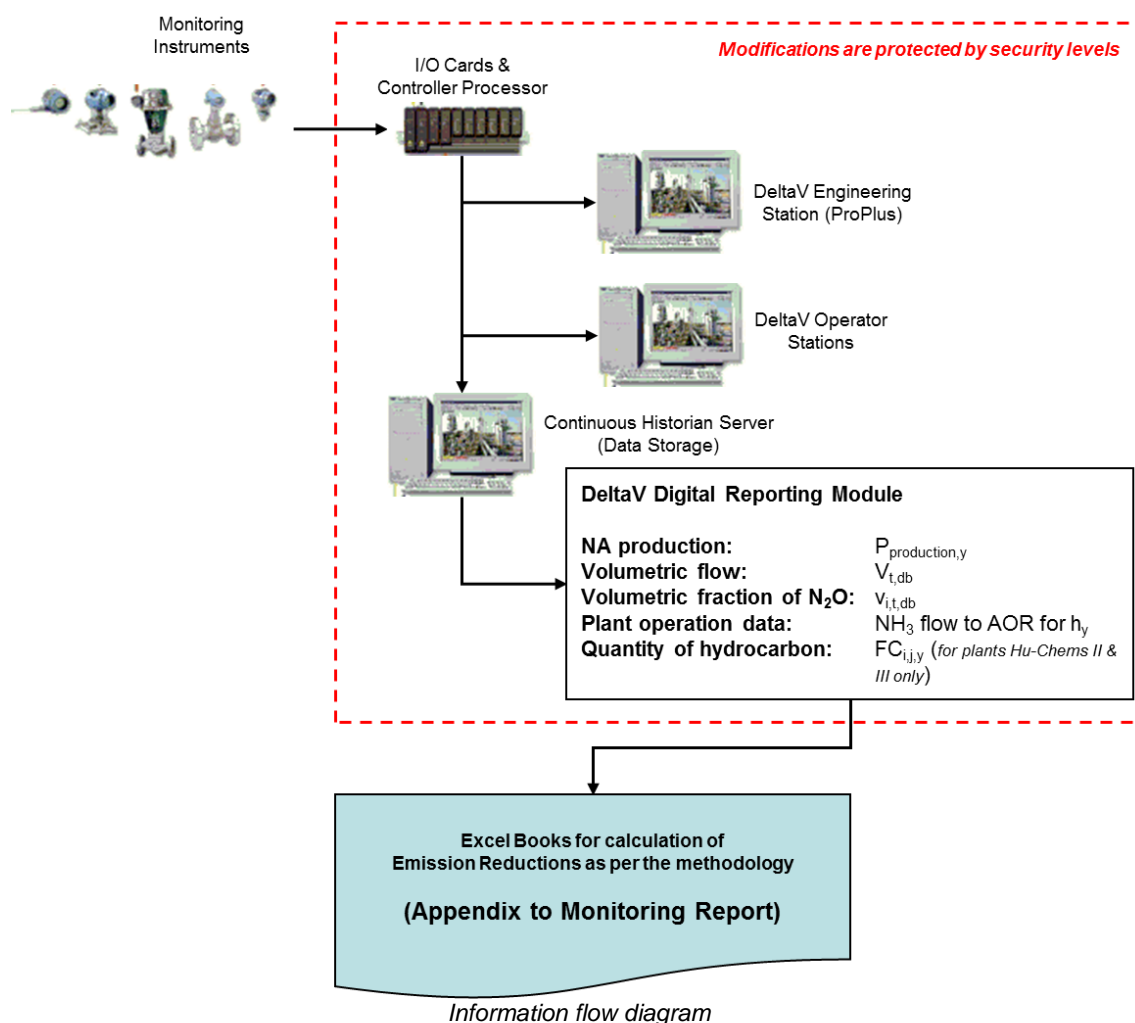
Line diagram incl. the location of the monitoring instruments / Hu-Chems IV

The reporting module of the Delta V system automatically generates aggregated daily reports (separately for each plant as applicable) based on the stored raw data from the continuous historian server. Daily reports contain following kinds of data relevant for calculation of claimed emission reductions and at the required intervals:

- NA production ( $P_{\text{production},y}$ )
- Operating parameters of the NA plants ( $\text{NH}_3$  flow to AOR for determining  $h_y$ )
- Volumetric flow of the gaseous stream ( $V_{t,db}$ )
- Volumetric fraction of  $\text{N}_2\text{O}$  in the gaseous stream ( $v_{i,t,db}$ )
- Quantity of hydrocarbon ( $\text{FC}_{i,j,y}$ ) – for plants Hu-Chems II and III only

Relevant parameters as mentioned above are exported from the digital available daily reports to an excel book attached to this MR for presentation of required parameters and calculation of baseline emissions, project emissions and emission reductions according to formula as required. Details on

source of data of all relevant parameters can be found directly in the respective parameter tables in Section D.



The description of the information flow (incl. data generation, aggregation, recording, calculation and reporting) fully complies with the applied methodology, the PDD and monitoring plan.

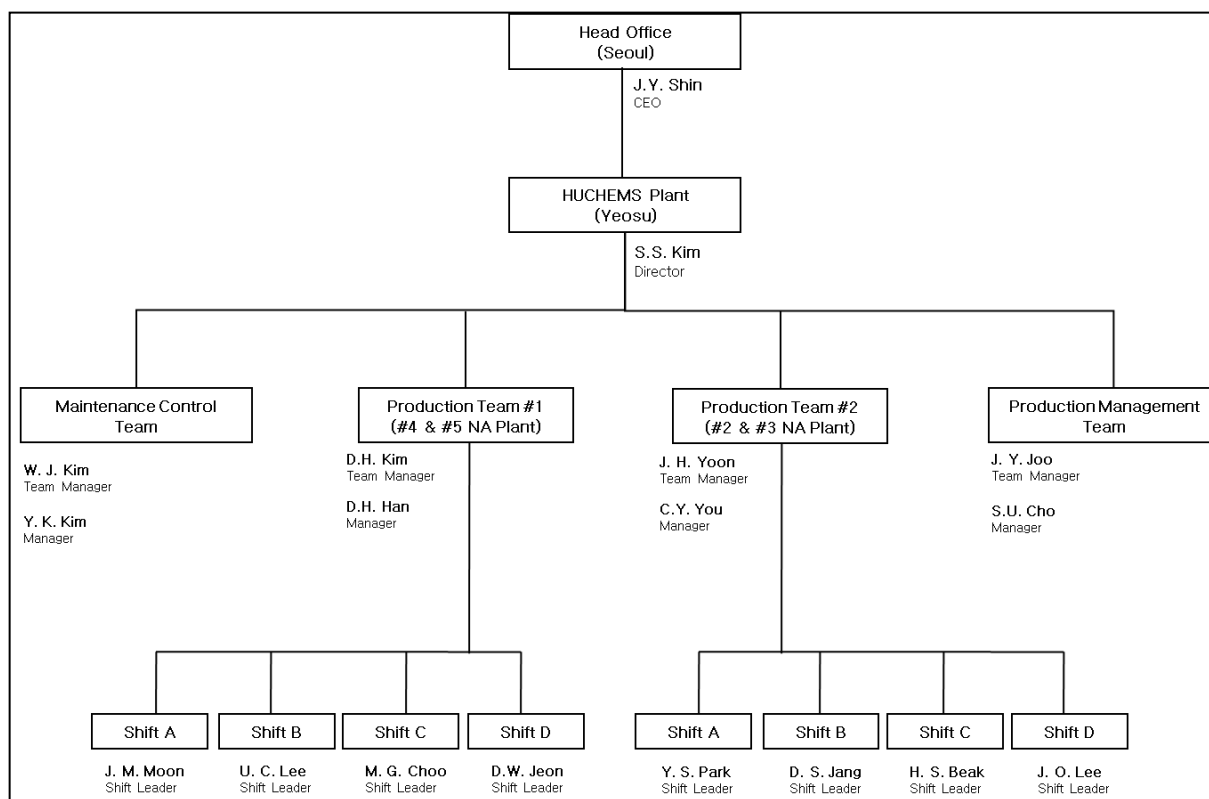
### (b) Roles and responsibilities of personnel

Project operator is Hu-Chems Fine Chemical Corp. Hu-Chems operates several production units, which produce fine chemical products. Hu-Chems is ISO 9001 and 14001 certified and received the Korean safety and health management system certificate (KGS 18001 & OHSAS 18001). The company has received the Grand Prize of Korea Valuable Management Award in 2005, the President of Korea's medal in an Energy Saving Promote Contest as well as the Korean Marketing Best Award (KMAC) in 2004 as well as other awards.

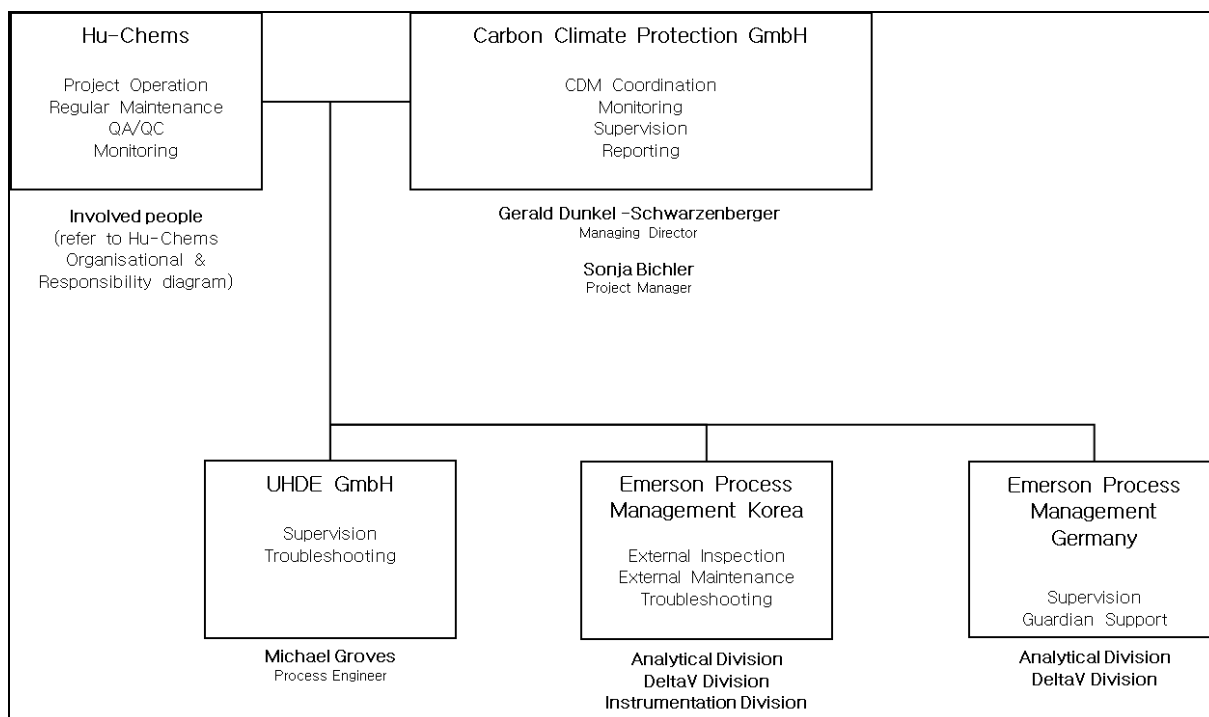
The operating and maintenance personal of the EnviNOx® system has been trained by the technology provider UHDE and the supplier of the digital process control system (Delta V, M/s. process management), further Hu-Chems has established internal training plans on the CDM procedures, operation of the EnviNOx® system and the monitoring system to train staffs, who are assigned to the project during the crediting period. Training records are available and submitted to the DOE for verification.

CARBON is responsible for supervising and checking the monitoring and reporting data. Furthermore, CARBON prepares the MR and supporting documents and arranges additional

checks of data and information. CARBON gives its approval before submitting the documents to the respective DOE for verification.



*Hu-Chems organisational & responsibility diagram*



*CDM project: Involved entities & project responsibilities*

**(c) Back up plans / Emergency procedures for monitoring system**  
**Back up plan for measuring system / Periodic observations of AMS**

- EnviNOx® – automatic DCS system

The EnviNOx® systems are designed for automatic operation, so that activities by the operation personnel are not required during normal operation. However, all alarms and any action taken by the operating personnel (events) are automatically logged at the computer station (Alarm & Event List) of the DCS system. All log sheets for alarm and events are exported and therefore digital available (Excel Files) and can be analysed and evaluated. Malfunction of system components is indicated on the operator console in the control room as an alarm. Occurrence of such an alarm requires the operator to immediately take measures to remedy the problem. This is done by informing Hu-Chems instrument department and CARBON. It is then decided whether the problem can be fixed immediately by them or whether external support is required.

- Back up – regular onsite inspection

In addition to the automatic error indication by the automatic DCS system, the project operator Hu-Chems is carrying out visual onsite analyser cabinet inspections as well as related installations on a shift basis (3 times daily). Relevant data related to the analyser and sampling system are logged on the ISO Document HCSEF-448-1 “CDM Analyser/Reactor Check List”. Actions are defined in case of abnormal observations. Further, Hu-Chems is carrying out a visual onsite check of the EnviNOx® reactor and tail gas line as well as related installations once per day. Relevant data are logged on the ISO Document HCSEF-448-1 “CDM Analyser/Reactor Check List”. Actions are defined in case of abnormal observations.

- Back up – system support & preventive maintenance → Delta V

The Delta V automatic measuring system (AMS) used for plant operation and CDM monitoring was designed by EMERSON, the main supplier of components related to the monitoring system. In order to ensure maximum availability of the Delta V AMS and to prevent deficient handling of data, Hu-Chems has contracted EPMK to execute monthly onsite health checks and/or quarterly onsite inspection visits. Furthermore a 24-hours emergency service and the 24-hours Delta V guardian support are covered by the contract. The contracted services comprise error diagnostics, measures for system stability, updates as well as preventive maintenance for the Delta V AMS and related technical components. Health check reports and inspection visit reports are available and submitted to the DOE for verification.

- Back up – support & preventive maintenance → EnviNOx®, analyser, instruments

Main instruments for CDM monitoring (i.e. sampling system, continuously measuring non-dispersive-infrared (NDIR) analyser used for N<sub>2</sub>O detection, etc.) were designed and supplied by EMERSON, the main supplier of components related to the monitoring system. In order to enable high levels of availability and accuracy of instruments, Hu-Chems has contracted EPMK to execute monthly onsite health checks and/or quarterly onsite inspection visits. Furthermore a 24-hours emergency service is covered by the contract. The contracted regular, services comprise error diagnostics of analysers, component updates of the analysers and the sampling system, in-depth inspections of analysers and the sampling system as well as preventive maintenance services for the analysers, the sampling system and technical components / instruments of the CDM monitoring system. Exception handling for CDM monitoring instruments is covered by the 24-hours emergency service with guaranteed short-term onsite availability of EMERSON experts. Health check reports and inspection visit reports are available and submitted to the DOE for verification. Supervision is done based on the daily reports by the technology provider Uhde and EMERSON.

- Back up – calibration & general maintenance → instruments

In order to safeguard availability and accuracy of instruments, the project participants have mandated EPMK to execute regular calibration services and regular general maintenance services for all related monitoring instruments on a regular basis (adapted to the annual shutdown and maintenance schedule of the NA plant). The service inter alia consists, besides calibrations, of hardware and connection maintenance as well as software checks and error diagnostics. Service reports of performed services and calibration records are submitted to the DOE for verification.



- Back up – onsite spare part stock

As further important contribution to the availability of the monitoring system (e.g. in the event of failure of the measuring equipment), Hu-Chems stores a comprehensive range of spare parts at the project site. The types and amount of stored spare parts meet the recommendations of the supplier. The majority of spare part types are re-purchased after consumption, some other spare part types are re-purchased after their stock has reached a defined reorder level, in both cases Hu-Chems is following the recommendation of the supplier. The spare part stock includes inter alia filter elements, valves and pressure controllers for the sample handling system and filter elements, analysis cells (crucial part for analysers), flow sensors and several electrical parts for the analysers. An overview on available parts is made available to the DOE for verification.

- Back up – certified standard gases

Pressure levels of standard gases used for regular, automatic calibration of analysers are constantly monitored during the regular onsite inspection. Spare bottles of test gases are purchased in proper time. Specifications and certification of test gases are made available to the DOE for verification.

- Back up – procedures

In addition to the quality control and assurance procedures acc. to Hu-Chems quality management system and in order to avoid possible failures of the AMS, procedures are implemented for the project activity. The approach was to ensure immediate response to such special events in the system. The following table summarizes the periodical observations of the AMS:

Organization	Action	Frequency	Output
Delta V	Events & Alarm List	Continuously	Txt & Excel files
Hu-Chems	Shift Inspection	3 times per day	Protocol/Check List
Hu-Chems	Daily Inspection	Daily	Protocol/Check List
UHDE	Supervision	Daily	Plausibility check
EPMK	AMS health check (Hard- & Software) and of sampling & analyser system	Monthly	Health Check Report
EPMK	AMS inspection (Hard- & Software) and of sampling & analyser system	Quarterly	Inspection Report
EPMK & suppliers	General Maintenance & Calibration Service of instruments	Regularly, adopted to annual shutdown schedule of plants	Service Report & Calibration records

All resulting documents are analysed and evaluated by Hu-Chems under support of CARBON. In case of any upcoming problem or failure of the EnviNOx® system and/or the AMS Hu-Chems immediately takes measure to remedy the problem. The provider of the AMS is available 24-hours a day via hotline. Furthermore, EPMK is committed to be onsite within 24 hours.

**(d) Systematic measures for QA for monitoring data during analyser down times**

In order to ensure data quality back up plans are in place (see above). In case of (scheduled or unscheduled) AMS down times (or parts thereof), demonstration of normal plant operation and estimation of emission reductions are conservatively conducted according to the methodology and the monitoring plan. Related data and documents are provided to the DOE for verification, if applicable in the covered monitoring period.

Specifically, if data for either the N<sub>2</sub>O concentration or the volume flow of the stack gas are not available for more than 1/3 of any hour while the plant was in operation, the value for that hour is replaced with the maximum value of N<sub>2</sub>O concentration or volume flow of the tail gas observed during the monitoring period. If data for neither the N<sub>2</sub>O concentration nor the volume or mass flow of the tail gas are available for more than 1/3 of any hour while the plant was in operation, the

maximum value of mass flow of N<sub>2</sub>O calculated during the monitoring period is applied to any such hour. In such cases, values observed during five operating hours before and after a plant start-up and shutdown are not used for the determination of the maximum values.

## SECTION D. Data and parameters

### D.1. Data and parameters fixed ex ante

#### (a) Relevant for all three plants

Data/Parameter	EF <sub>new,y</sub>		
Unit	kg N <sub>2</sub> O/t HNO <sub>3</sub>		
Description	Baseline N <sub>2</sub> O emission factor for nitric acid production in year y (related to 100 per cent pure acid)		
Source of data	According to PDD and methodology ACM0019 v.04.0		
Value(s) applied		Year	Emission factor (kg N <sub>2</sub> O/t HNO <sub>3</sub> )
		2021	2.50
		2022	2.50
		2023	2.50
		2024	2.50
		2025	2.50
		2026	2.50
		2027	2.50
		2028	2.50
Choice of data or measurement methods and procedures	N/A		
Purpose of data/parameter	Calculation of baseline emissions		
Additional comments	The decrease in the value for the baseline emission factor over time is to reflect the technological development.		

Data/Parameter	GWP <sub>N2O</sub>
Unit	t CO <sub>2</sub> e/t N <sub>2</sub> O
Description	Global warming potential of N <sub>2</sub> O valid for the commitment period
Source of data	Acc. to PDD, ACM0019 v04.0, and "Clarification: Regulatory requirements under temporary measures for post-2020 cases" (CDM-EB109-A01-CLAR)
Value(s) applied	<b>265</b>
Choice of data or measurement methods and procedures	None
Purpose of data/parameter	Calculation of baseline and project emissions
Additional comments	Valid from 01/01/2021 onwards as per "Clarification: Regulatory requirements under temporary measures for post-2020 cases" (CDM-EB109-A01-CLAR).

#### (a) Relevant for plant Hu-Chems II

Data/Parameter	Operating pressure <sub>II</sub>
Unit	kPa
Description	Operating pressure of the ammonia burner of Hu-Chems II
Source of data	Manufacturer's specifications
Value(s) applied	<b>872</b> (equivalent to 8.72 barg)

Choice of data or measurement methods and procedures	N/A
Purpose of data/parameter	The parameter is used to determine whether the NA plant operates at a low, medium or high pressure.
Additional comments	N/A

<b>Data/Parameter</b>	<b>EF<sub>historical,II</sub></b>
Unit	kg N <sub>2</sub> O/t HNO <sub>3</sub>
Description	Historical baseline emission factor of the nitric acid plant of Hu-Chems II
Source of data	Historical information from issuance reports of CDM-PDD documents
Value(s) applied	<b>12.09</b>
Choice of data or measurement methods and procedures	Plants that used AM0028 in the 1 <sup>st</sup> crediting period shall use the lowest baseline emission factor obtained in one calendar year, from 1 January to 31 December, obtained during the 1 <sup>st</sup> crediting period. Plant Hu-Chems II used AM0028 v1 in the 1 <sup>st</sup> crediting period, accordingly, the lowest baseline emission factor obtained in one calendar year, from 1 January to 31 December, obtained during the 1 <sup>st</sup> crediting period, is used. The calculation of EF <sub>historical,II</sub> is based on actual data of overall historical baseline emission factors obtained in one calendar year of the NA plant of the 1 <sup>st</sup> crediting period from issuance reports.
Purpose of data/parameter	Calculation of baseline emissions
Additional comments	This value will remain constant over the 2 <sup>nd</sup> and 3 <sup>rd</sup> crediting period.

<b>Data/Parameter</b>	<b>EF<sub>default,y,II</sub></b>																		
Unit	kg N <sub>2</sub> O/t HNO <sub>3</sub>																		
Description	Default emission factor according to the operating pressure of the ammonia burner in year y (related to 100 per cent pure acid) of Hu-Chems II																		
Source of data	According to PDD and methodology ACM0019 v.04.0																		
Value(s) applied	<p>Since plant Hu-Chems II is a high-pressure plant, corresponding values given in the methodology apply over the crediting period:</p> <table border="1"> <thead> <tr> <th>Year</th><th>High pressure (Over 600 kPa)</th></tr> </thead> <tbody> <tr><td>2021</td><td>11.00</td></tr> <tr><td>2022</td><td>10.80</td></tr> <tr><td>2023</td><td>10.60</td></tr> <tr><td>2024</td><td>10.40</td></tr> <tr><td>2025</td><td>10.20</td></tr> <tr><td>2026</td><td>10.00</td></tr> <tr><td>2027</td><td>9.80</td></tr> <tr><td>2028</td><td>9.60</td></tr> </tbody> </table>	Year	High pressure (Over 600 kPa)	2021	11.00	2022	10.80	2023	10.60	2024	10.40	2025	10.20	2026	10.00	2027	9.80	2028	9.60
Year	High pressure (Over 600 kPa)																		
2021	11.00																		
2022	10.80																		
2023	10.60																		
2024	10.40																		
2025	10.20																		
2026	10.00																		
2027	9.80																		
2028	9.60																		
Choice of data or measurement methods and procedures	N/A																		
Purpose of data/parameter	Calculation of baseline emissions																		
Additional comments	The decrease in the value for the baseline emission factor over time is to reflect the technological development.																		

<b>Data/Parameter</b>	<b>P<sub>product,max,II</sub></b>
Unit	t product (→ t HNO <sub>3</sub> )
Description	Design capacity of nitric acid production during the first crediting period of Hu-Chems II
Source of data	Manufacturer's specifications
Value(s) applied	<b>116,800 → 40,960</b> (for 128 days)

Choice of data or measurement methods and procedures	N/A
Purpose of data/parameter	Calculation of baseline emissions
Additional comments	This parameter is only for project activities applying case 1 as per ACM0019 v.04.0, i.e. for NA plants that have used AM0028 or AM0034 in the 1 <sup>st</sup> crediting period.

**(b) Relevant for plant Hu-Chems III**

<b>Data/Parameter</b>	<b>Operating pressure<sub>III</sub></b>
Unit	kPa
Description	Operating pressure of the ammonia burner of Hu-Chems III
Source of data	Manufacturer's specifications
Value(s) applied	<b>872</b> (equivalent to 8.72 barg)
Choice of data or measurement methods and procedures	N/A
Purpose of data/parameter	The parameter is used to determine whether the NA plant operates at a low, medium or high pressure.
Additional comments	N/A

<b>Data/Parameter</b>	<b>EF<sub>historical,III</sub></b>
Unit	kg N <sub>2</sub> O/t HNO <sub>3</sub>
Description	Historical baseline emission factor of the nitric acid plant of Hu-Chems III
Source of data	Historical information from issuance reports of CDM-PDD documents
Value(s) applied	<b>11.26</b>
Choice of data or measurement methods and procedures	Plants that used AM0028 in the 1 <sup>st</sup> crediting period shall use the lowest baseline emission factor obtained in one calendar year, from 1 January to 31 December, obtained during the 1 <sup>st</sup> crediting period. Plant Hu-Chems III used AM0028 v1 in the 1 <sup>st</sup> crediting period, accordingly, the lowest baseline emission factor obtained in one calendar year, from 1 January to 31 December, obtained during the 1 <sup>st</sup> crediting period, is used. The calculation of EF <sub>historical,III</sub> is based on actual data of overall historical baseline emission factors obtained in one calendar year of the NA plant of the 1 <sup>st</sup> crediting period from issuance reports.
Purpose of data/parameter	Calculation of baseline emissions
Additional comments	This value will remain constant over the 2 <sup>nd</sup> and 3 <sup>rd</sup> crediting period.

<b>Data/Parameter</b>	<b>EF<sub>default,y,III</sub></b>
Unit	kg N <sub>2</sub> O/t HNO <sub>3</sub>
Description	Default emission factor according to the operating pressure of the ammonia burner in year y (related to 100 per cent pure acid) of Hu-Chems III
Source of data	According to PDD and methodology ACM0019 v.04.0

Value(s) applied	Since plant Hu-Chems III is a high-pressure plant, corresponding values given in the methodology apply over the crediting period:	
	Year	High pressure (Over 600 kPa)
	2021	11.00
	2022	10.80
	2023	10.60
	2024	10.40
	2025	10.20
	2026	10.00
	2027	9.80
	2028	9.60
Choice of data or measurement methods and procedures	N/A	
Purpose of data/parameter	Calculation of baseline emissions	
Additional comments	The decrease in the value for the baseline emission factor over time is to reflect the technological development.	

<b>Data/Parameter</b>	<b>P<sub>product,max,III</sub></b>
Unit	t product (→ t HNO <sub>3</sub> )
Description	Design capacity of nitric acid production during the first crediting period of Hu-Chems III
Source of data	Manufacturer's specifications
Value(s) applied	<b>116,800 → 40,960</b> (for 128 days)
Choice of data or measurement methods and procedures	N/A
Purpose of data/parameter	Calculation of baseline emissions
Additional comments	This parameter is only for project activities applying case 1 as per ACM0019 v.04.0, i.e. for NA plants that have used AM0028 or AM0034 in the 1 <sup>st</sup> crediting period.

## (c) Relevant for plant Hu-Chems IV

<b>Data/Parameter</b>	<b>Operating pressure<sub>IV</sub></b>
Unit	kPa
Description	Operating pressure of the ammonia burner of Hu-Chems IV
Source of data	Manufacturer's specifications
Value(s) applied	<b>335</b> (equivalent to 3.35 barg)
Choice of data or measurement methods and procedures	N/A
Purpose of data/parameter	The parameter is used to determine whether the NA plant operates at a low, medium or high pressure.
Additional comments	N/A

<b>Data/Parameter</b>	<b>EF<sub>historical,IV</sub></b>
Unit	kg N <sub>2</sub> O/t HNO <sub>3</sub>
Description	Historical baseline emission factor of the nitric acid plant of Hu-Chems IV
Source of data	Historical information from issuance reports of CDM-PDD documents
Value(s) applied	<b>5.70</b>

Choice of data or measurement methods and procedures	Plants that used AM0028 in the 1 <sup>st</sup> crediting period shall use the lowest baseline emission factor obtained in one calendar year, from 1 January to 31 December, obtained during the 1 <sup>st</sup> crediting period. Plant Hu-Chems IV used AM0028 v1 in the 1 <sup>st</sup> crediting period, accordingly, the lowest baseline emission factor obtained in one calendar year, from 1 January to 31 December, obtained during the 1 <sup>st</sup> crediting period, is used. The calculation of $EF_{\text{historical, IV}}$ is based on actual data of overall historical baseline emission factors obtained in one calendar year of the NA plant of the 1 <sup>st</sup> crediting period from issuance reports.
Purpose of data/parameter	Calculation of baseline emissions
Additional comments	This value will remain constant over the 2 <sup>nd</sup> and 3 <sup>rd</sup> crediting period.

<b>Data/Parameter</b>	<b><math>EF_{\text{default, y, IV}}</math></b>																		
Unit	kg N <sub>2</sub> O/t HNO <sub>3</sub>																		
Description	Default emission factor according to the operating pressure of the ammonia burner in year y (related to 100 per cent pure acid) of Hu-Chems IV																		
Source of data	According to PDD and methodology ACM0019 v.04.0																		
Value(s) applied	<p>Since plant Hu-Chems IV is a medium pressure plant, corresponding values given in the methodology apply over the crediting period:</p> <table border="1"> <thead> <tr> <th>Year</th><th>Medium pressure (200 – 600 kPa)</th></tr> </thead> <tbody> <tr><td>2021</td><td>6.80</td></tr> <tr><td>2022</td><td>6.60</td></tr> <tr><td>2023</td><td>6.40</td></tr> <tr><td>2024</td><td>6.20</td></tr> <tr><td>2025</td><td>6.00</td></tr> <tr><td>2026</td><td>5.80</td></tr> <tr><td>2027</td><td>5.60</td></tr> <tr><td>2028</td><td>5.40</td></tr> </tbody> </table>	Year	Medium pressure (200 – 600 kPa)	2021	6.80	2022	6.60	2023	6.40	2024	6.20	2025	6.00	2026	5.80	2027	5.60	2028	5.40
Year	Medium pressure (200 – 600 kPa)																		
2021	6.80																		
2022	6.60																		
2023	6.40																		
2024	6.20																		
2025	6.00																		
2026	5.80																		
2027	5.60																		
2028	5.40																		
Choice of data or measurement methods and procedures	N/A																		
Purpose of data/parameter	Calculation of baseline emissions																		
Additional comments	The decrease in the value for the baseline emission factor over time is to reflect the technological development.																		

<b>Data/Parameter</b>	<b><math>P_{\text{product, max, IV}}</math></b>
Unit	t product (→ t HNO <sub>3</sub> )
Description	Design capacity of nitric acid production during the first crediting period of Hu-Chems IV
Source of data	Manufacturer's specifications
Value(s) applied	<b>467,200 → 163,840</b> (for 128 days)
Choice of data or measurement methods and procedures	N/A
Purpose of data/parameter	Calculation of baseline emissions
Additional comments	This parameter is only for project activities applying case 1 as per ACM0019 v.04.0, i.e. for NA plants that have used AM0028 or AM0034 in the 1 <sup>st</sup> crediting period.

**(d) Parameters from “Tool to determine the mass flow of a greenhouse gas in a gaseous stream” relevant for all three plants**

<b>Data/Parameter</b>	<b><math>R_u</math></b>
Unit	Pa.m <sup>3</sup> /kmol.K

Description	Universal ideal gases constant
Source of data	Tool to determine the mass flow of a greenhouse gas in a gaseous stream
Value(s) applied	<b>8,314</b>
Choice of data or measurement methods and procedures	Specified in the tool
Purpose of data/parameter	Calculation of project emissions
Additional comments	N/A

Data/Parameter	MM <sub>i</sub>								
Unit	kg/kmol								
Description	Molecular mass of greenhouse gas i								
Source of data	Tool to determine the mass flow of a greenhouse gas in a gaseous stream								
Value(s) applied	<table><tr><th>Compound</th><th>Structure</th><th>Molecular mass (kg/kmol)</th></tr><tr><td>Nitrous oxide</td><td>N<sub>2</sub>O</td><td>44.02</td></tr></table>			Compound	Structure	Molecular mass (kg/kmol)	Nitrous oxide	N <sub>2</sub> O	44.02
Compound	Structure	Molecular mass (kg/kmol)							
Nitrous oxide	N <sub>2</sub> O	44.02							
Choice of data or measurement methods and procedures	Specified in the tool								
Purpose of data/parameter	Calculation of project emissions								
Additional comments	N/A								

<b>Data/Parameter</b>	<b>P<sub>n</sub></b>
Unit	Pa
Description	Total pressure at normal conditions
Source of data	Tool to determine the mass flow of a greenhouse gas in a gaseous stream
Value(s) applied	<b>101,325</b>
Choice of data or measurement methods and procedures	Specified in the tool
Purpose of data/parameter	Calculation of project emissions
Additional comments	This parameter is used to determine the mass flow of the N <sub>2</sub> O in the tail gas.

<b>Data/Parameter</b>	<b>T<sub>n</sub></b>
Unit	K
Description	Temperature at normal conditions
Source of data	Tool to determine the mass flow of a greenhouse gas in a gaseous stream
Value(s) applied	<b>273.15</b>
Choice of data or measurement methods and procedures	Specified in the tool
Purpose of data/parameter	Calculation of project emissions
Additional comments	This parameter is used to determine the mass flow of the N <sub>2</sub> O in the tail gas.

## D.2. Data and parameters monitored

Below “Annual”, “Yearly” or “year y” are mentioned as in ACM0019 or respective tools, which is understood as monitoring period covered by this report unless otherwise described.

### (a) Parameters of plant Hu-Chems II

Data/Parameter	$P_{\text{production},y,II}$
Unit	tHNO <sub>3</sub>
Description	Nitric acid produced in year y of Hu-Chems II
Measured/calculated/default	Measured
Source of data	Production reports (based on measurements from PP) NA flow and density are measured with a coriolis flow meter, temperature with a temperature measurement and concentration is determined based on measured parameters. Values are sent to the DCS (control room), and the NA production (as 100% HNO <sub>3</sub> ) is calculated based on mass flow and HNO <sub>3</sub> concentration. Final production values are exported in production reports through the Delta V system. Please refer to section C. <i>Information Flow</i> of this MR.
Value(s) of monitored parameter	<b>35,776</b> An excel book containing recorded hourly values is attached to this MR.
Monitoring equipment	Meter location: Located in the NA line, downstream of the absorption tower (322-N-201). Please refer to section C <i>Line diagram</i> of this MR.  <b>322-FT-2-512</b> Type: Coriolis Flowmeter Accuracy class: $\pm 0.1\%$ Calibration frequency: 60 months Serial number: 14325173 Date of last calibration: 01/11/2019 (Validity: 31/10/2024)  <b>322-TI-2-127</b> Type: Temperature Converter Accuracy class: $\pm 0.15^{\circ}\text{C} \pm 0.03\%$ of span (according to IEC751) Calibration frequency: 24 months Serial Number: 51305907-175 Date of last calibration: 21/04/2021 (Validity: 20/04/2023)
Measuring/reading/recording frequency	Measuring: Continuously Reading: 10 seconds Recording: Hourly
Calculation method (if applicable)	N/A
QA/QC procedures	QA/QC procedures in terms of equipment operation and maintenance for monitoring instruments used for CDM Monitoring have been incorporated as part of the ISO 9001 and ISO 14001 procedures of Hu-Chems. Accordingly, calibration and maintenance are part of regular QA/QC of the NA plant. Please also refer to section C. <i>Back Up plans / Emergency procedures for monitoring system of this MR and respective subitems Back Up Plans for measuring systems / Periodic observation of the AMS and Systematic measures for QA for monitoring data during analyser down times.</i>
Purpose of data/parameter	Calculation of baseline emissions
Additional comments	$P_{NA,h,II}$ (NA produced in hour h of Hu-Chems II) represents the hourly value of $P_{\text{production},y,II}$ and is used for determining $h_{r,y,II}$ as per applied methodology.

Data/Parameter	$h_{y,II}$
Unit	h
Description	Number of hours of operation in year y of Hu-Chems II
Measured/calculated/default	Measured
Source of data	Measuring device (Please refer to monitoring equipment below and to section C. <i>Information Flow</i> of this MR.)
Value(s) of monitored parameter	<b>2,788</b> An excel book containing recorded hourly values is attached to this MR.



Monitoring equipment	<p>Meter location: Located in the ammonia supply line, upstream of the ammonia oxidation reactor (322-K-202). Please refer to section C. <i>Line diagram</i> of this MR.</p> <p><b>322-FT-2-503</b>  Type: Differential pressure transmitter  Accuracy class: <math>\pm 0.065\%</math> of span  Calibration frequency: 48 months  Serial number: 2052133  Date of last calibration: 21/04/2021 (Validity: 20/04/2025)</p> <p><b>322-TT-2-103</b>  Type: Temperature transmitter  Accuracy class: <math>\pm 0.15^\circ\text{C} \pm 0.03\%</math> of span (according to IEC751)  Calibration frequency: 24 months  Serial number: 1809806  Date of last calibration: 21/04/2021 (Validity: 20/04/2023)</p> <p><b>322-PT-2-303</b>  Type: Pressure transmitter  Accuracy class: <math>\pm 0.1\%</math> of span  Calibration frequency: 48 months  Serial number: 2052135  Date of last calibration: 21/04/2021 (Validity: 20/04/2025)</p>
Measuring/reading/recording frequency	Measuring: Continuously Reading: 10 seconds Recording: Hourly
Calculation method (if applicable)	The flow of $\text{NH}_3$ to the ammonia oxidation reactor indicates the operational status. In case, the volume flow of $\text{NH}_3$ to the ammonia oxidation reactor lies above the threshold of $500 \text{ Nm}^3/\text{h}$ during an hour, the reactor is considered in operation during the hour.
QA/QC procedures	QA/QC procedures in terms of equipment operation and maintenance for monitoring instruments used for CDM Monitoring have been incorporated as part of the ISO 9001 and ISO 14001 procedures of Hu-Chems. Accordingly, calibration and maintenance are part of regular QA/QC of the NA plant. Please also refer to section C. <i>Back Up plans / Emergency procedures for monitoring system</i> of this MR and respective subitems <i>Back Up Plans for measuring systems / Periodic observation of the AMS and Systematic measures for QA for monitoring data during analyser down times</i> .
Purpose of data/parameter	Calculation of baseline and project emissions
Additional comments	Records to be maintained during project's lifetime

<b>Data/Parameter</b>	<b><math>h_{r,y,II}</math></b>
Unit	h
Description	For tertiary $\text{N}_2\text{O}$ abatement, Number of hours ( $h$ ) in year $y$ where the abatement system is by-passed, underperforming or failed of Hu-Chems II
Measured/calculated/default	Measured
Source of data	Measuring device (Please refer to monitoring equipment below and to section C. <i>Information Flow</i> of this MR.)
Value(s) of monitored parameter	<b>19</b>
Monitoring equipment	<p>NA plant Hu-Chems II has used AM0028 in the 1<sup>st</sup> crediting period, accordingly the abatement system is deemed to be by-passed, not working or failed in the hour <math>h</math> in year <math>y</math> if:</p> $F_{\text{N}_2\text{O},\text{tailgas},h,II} > EF_{\text{existing},y,II} \times P_{\text{NA},h,II}$ <p>The parameters mentioned above are determined and measured/monitored as explained in the respective sections of this MR:</p> <ul style="list-style-type: none"> <li><math>P_{\text{NA},h,II}</math> – determination is based on monitored parameter <math>P_{\text{production},y,II}</math></li> <li><math>F_{\text{N}_2\text{O},\text{tail gas},h,II}</math> – determination is based on monitored parameters <math>V_{t,\text{db},n,II}</math>, <math>V_{i,t,\text{db},II}</math> and <math>\text{CH}_2\text{O}_{t,\text{db},n,II}</math></li> </ul> <p><math>EF_{\text{existing},y,II}</math> – determination is based on ex-ante determined parameters <math>EF_{\text{historical},II}</math> and <math>EF_{\text{default},y,II}</math></p>
Measuring/reading/recording frequency	Measuring: Continuously Reading: Hourly Recording: Hourly

Calculation method (if applicable)	(Refer to "Monitoring equipment" above)
QA/QC procedures	QA/QC procedures in terms of equipment operation and maintenance for monitoring instruments used for CDM Monitoring have been incorporated as part of the ISO 9001 and ISO 14001 procedures of Hu-Chems. Accordingly, calibration and maintenance are part of regular QA/QC of the NA plant. Please also refer to section C. <i>Back Up plans / Emergency procedures for monitoring system</i> of this MR and respective subitems <i>Back Up Plans for measuring systems / Periodic observation of the AMS</i> and <i>Systematic measures for QA for monitoring data during analyser down times</i> .
Purpose of data/parameter	Calculation of baseline and project emissions
Additional comments	Records to be maintained during project's lifetime. The parameter $P_{NA,h,II}$ as used in the formula (NA produced in hour h of Hu-Chems II) represents the hourly value of $P_{production,y,II}$ .

Parameters from "Tool to determine the mass flow of a greenhouse gas in a gaseous stream"

<b>Data/Parameter</b>	<b><math>V_{t,db,II}</math></b>
Unit	m <sup>3</sup> dry gas/h
Description	Volumetric flow of the gaseous stream in time interval t on a dry basis of Hu-Chems II
Measured/calculated/default	Measured
Source of data	Measuring device (Please refer to monitoring equipment below and to section C. <i>Information Flow</i> of this MR.)
Value(s) of monitored parameter	<b>45,690</b> The value represents an average over the monitoring period. An excel book containing recorded hourly values is attached to this MR.
Monitoring equipment	Meter location: Located in the stack at the end of the tail gas line  <b>322-FT-2-522</b> Type: Annubar / Differential pressure transmitter Accuracy class: $\pm 2\%$ of span Serial number: 1240833 Calibration frequency: 60 months (QAL 2 reference measurement) Date of last QAL 2: 27/09/2017 – 29/09/2017 (Validity: 26/09/2022) Date of last AST: 15/10/2020 – 16/10/2020
Measuring/reading/recording frequency	Measuring: Continuously Reading: Every 1 second Recording: Hourly
Calculation method (if applicable)	N/A
QA/QC procedures	QA/QC procedures in terms of equipment operation and maintenance for monitoring instruments used for CDM Monitoring have been incorporated as part of the ISO 9001 and ISO 14001 procedures of Hu-Chems. Accordingly, calibration and maintenance are part of regular QA/QC of the NA plant (please refer to section C.). Calibration against a primary device provided by an independent accredited laboratory follows EN 14181 requirements (QAL 2 reference measurement). Please refer to section C. <i>Back Up plans / Emergency procedures for monitoring system</i> of this MR and respective subitems <i>Back Up Plans for measuring systems / Periodic observation of the AMS</i> and <i>Systematic measures for QA for monitoring data during analyser down times</i> .
Purpose of data/parameter	Calculation of project emissions
Additional comments	Option A parameter according to the applied "Tool to determine the mass flow of a greenhouse gas in a gaseous stream". The volumetric flow is determined and expressed at normal conditions ( $P_n = 101,325$ Pa; $T_n = 273.15$ K) according to applied methodology. Monitoring of actual conditions ( $P_{t,II}$ , $T_{t,II}$ ) is therefore not necessary, as per the applied methodology. Dry basis flow measurement, since gaseous stream is considered to be dry (refer to parameter $C_{H_2O,t,db,n,II}$ ).

<b>Data/Parameter</b>	<b><math>V_{i,t,db,II}</math></b>
Unit	m <sup>3</sup> gas i/m <sup>3</sup> dry gas ( $\rightarrow$ m <sup>3</sup> N <sub>2</sub> O / m <sup>3</sup> dry gas)
Description	Volumetric fraction of greenhouse gas i in a time interval t on a dry basis of Hu-Chems II

Measured/calculated/default	Measured
Source of data	Measuring device (Please refer to monitoring equipment below and to section C. <i>Information Flow</i> of this MR.)
Value(s) of monitored parameter	<b>7.86*10<sup>-5</sup></b> The value represents an average over the monitoring period. An excel book containing recorded hourly values is attached to this MR.
Monitoring equipment	Meter location: Sample take-off is located in the tail gas line, downstream of the EnviNOx® reactor (322-R-202), and leads (via sample gas line) to the locked analyser house II (located closely to EnviNOx® reactor of Hu-Chems II), where the analyser is installed. Please refer to section C. <i>Line diagram</i> of this MR.  <b>322-AT-2-0127</b> Type: NDIR Analyser Accuracy class: ±1% (zero/span) Serial number: 990861497812 Calibration frequency: 60 months (QAL 2 reference measurement) Date of last QAL 2: 27/09/2017 – 29/09/2017 (Validity: 26/09/2022) Date of last AST: 15/10/2020 – 16/10/2020
Measuring/reading/recording frequency	Measuring: Continuously Reading: Every 1 second Recording: Hourly
Calculation method (if applicable)	N/A
QA/QC procedures	QA/QC procedures in terms of equipment operation and maintenance for monitoring instruments used for CDM Monitoring have been incorporated as part of the ISO 9001 and ISO 14001 procedures of Hu-Chems. Accordingly, calibration and maintenance are part of regular QA/QC of the NA plant (please refer to section C.). Calibration against a primary device provided by an independent accredited laboratory follows EN 14181 requirements (QAL 2 reference measurement). EPMK has been mandated to conduct monthly analyser health checks and quarterly inspection checks to ensure good instrument condition. Please refer to section C. <i>Back Up plans / Emergency procedures for monitoring system</i> of this MR and respective subitems <i>Back Up Plans for measuring systems / Periodic observation of the AMS and Systematic measures for QA for monitoring data during analyser down times</i> .
Purpose of data/parameter	Calculation of project emissions
Additional comments	The volumetric fraction of N <sub>2</sub> O is determined and expressed at normal conditions (P <sub>n</sub> = 101,325 Pa; T <sub>n</sub> = 273.15 K) according to the applied methodology. Monitoring of actual conditions (P <sub>t,II</sub> , T <sub>t,II</sub> ) is therefore not necessary, as per the applied methodology.

<b>Data/Parameter</b>	<b>CH<sub>2</sub>O,t,db,n,II</b>
Unit	mg H <sub>2</sub> O/m <sup>3</sup> dry gas
Description	Moisture content of the gaseous stream at normal conditions, in time interval t of Hu-Chems II
Measured/calculated/default	Measured
Source of data	Measurements according to the USEPA CF42 method 4 – Gravimetric determination of water content (Measurement Report)
Value(s) of monitored parameter	<b>10,333</b> (equivalent to 0.010 kg H <sub>2</sub> O/m <sup>3</sup> dry gas)
Monitoring equipment	As per USEPA CF42 method 4 – Gravimetric determination of water content
Measuring/reading/recording frequency	As per the PDD, measurements coincide with the Annual Surveillance Test (AST) or the calibration of the flow meter for the gaseous stream (QAL 2), both associated with requirements of the EN 14181 standard. Repeated measurements were conducted during last AST.
Calculation method (if applicable)	N/A
QA/QC procedures	According to USEPA CF 42 method 4
Purpose of data/parameter	Calculation of project emissions

Additional comments	<p>As per the applied "Tool to determine the mass flow of a greenhouse gas in a gaseous stream" flow and volumetric fraction may be measured on a dry or wet basis. The tool covers the possible measurement combinations, providing six different calculation options to determine the mass flow of a particular GHG (Option A to F). As described in the PDD, the option chosen for this project activity is Option A, requiring to demonstrate that the gaseous stream is dry, whereas the tool suggests two ways to do this:</p> <ul style="list-style-type: none"> <li>(a) Measure the moisture content of the gaseous stream (<math>C_{H_2O,t,db,n}</math>) and demonstrate that this is less or equal to 0.05 kg H<sub>2</sub>O/m<sup>3</sup> dry gas; or</li> <li>(b) Demonstrate that the temperature of the gaseous stream (<math>T_t</math>) is less than 60°C (333.15 K) at the flow measurement point.</li> </ul> <p>In the case of this project activity, the 1<sup>st</sup> option (a) has been chosen.</p> <p>The measured value as noted above shows that the moisture content of the gaseous stream is significantly below the maximum threshold value of 0.05 kg H<sub>2</sub>O/m<sup>3</sup> dry gas.</p>
---------------------	---

Since the volumetric fraction of N<sub>2</sub>O and the volumetric flow of the gaseous stream are determined and expressed at normal conditions ( $P_n = 101,325$  Pa;  $T_n = 273.15$  K), the actual conditions ( $P_{t,II}$ ,  $T_{t,II}$ ) are not required to be monitored, as per the applied methodology.

Parameters from "Tool to calculate project or leakage CO<sub>2</sub> emissions from fossil fuel combustion"

Data/Parameter	FC <sub>i,j,y,II</sub>
Unit	t/yr
Description	Quantity of fuel type i combusted in process j during the year y of Hu-Chems II
Measured/calculated/default	Measured
Source of data	Onsite measuring device (Please refer to monitoring equipment below and to section C. <i>Information Flow</i> of this MR.)
Value(s) of monitored parameter	<p><b>124.49</b></p> <p>An excel book containing recorded hourly values is attached to this MR.</p>
Monitoring equipment	<p>Meter location: Located in the propane gas line, upstream of the EnviNOx® reactor (322-R-202). Please refer to section C. <i>Line diagram</i> of this MR.</p> <p><b>322-FT-2-5121</b></p> <p>Type: Coriolis flowmeter  Accuracy class: ± 0.35%  Calibration frequency: 60 months  Serial number: 14126211  Date of last calibration: 31/10/2019 (Validity: 30/10/2024)</p>
Measuring/reading/recording frequency	<p>Measuring: Continuously  Reading: Every 10 seconds  Recording: Hourly</p>
Calculation method (if applicable)	N/A
QA/QC procedures	<p>QA/QC procedures in terms of equipment operation and maintenance for monitoring instruments used for CDM Monitoring have been incorporated as part of the ISO 9001 and ISO 14001 procedures of Hu-Chems. Accordingly, calibration and maintenance are part of regular QA/QC of the NA plant (please refer to section C.). As far as feasible, the consistency of metered fuel consumption quantities is cross-checked for plausibility by an annual energy balance that is based on purchased quantities and stock changes. Furthermore, as far as feasible, where the purchased fuel invoices can be identified specifically for the CDM project (and the specific plant, respectively), the metered fuel consumption quantities are cross-checked with available purchase invoices from the financial records.</p> <p>Please refer to section C. <i>Back Up plans / Emergency procedures for monitoring system</i> of this MR and respective subitems <i>Back Up Plans for measuring systems / Periodic observation of the AMS</i> and <i>Systematic measures for QA for monitoring data during analyser down times</i>.</p>
Purpose of data/parameter	Calculation of project emissions
Additional comments	The fuel (exactly: hydrocarbon used as reducing agent) applied in the plant is LPG with a major mass fraction of propane (expected level above 95%).

Data/Parameter	WC <sub>i,y,II</sub>
Unit	tC/t
Description	Weighted average mass fraction of carbon in fuel type i in year y of Hu-Chems II
Measured/calculated/default	Measured (by hydrocarbon supplier)
Source of data	Certificate of hydrocarbon supplier
Value(s) of monitored parameter	<b>0.82</b>
Monitoring equipment	Composition of the delivered hydrocarbon is measured by the supplier and provided on specific certificates.
Measuring/reading/recording frequency	Measuring: In order to assure conservativeness a certificate from the hydrocarbon supplier is requested at least on a yearly basis.
Calculation method (if applicable)	Composition of delivered hydrocarbon is available on specific certificates provided by the supplier. The mass fraction of carbon is obtained regularly, from which weighted average annual values are calculated.
QA/QC procedures	It is verified, if the applied value is within the uncertainty range of the IPCC default values as provided in Table 1.2, Vol. 2 of the 2006 IPCC Guidelines.
Purpose of data/parameter	Calculation of project emissions
Additional comments	Applicable where Option A of the "Tool to calculate project or leakage CO <sub>2</sub> emissions from fossil fuel combustion" is used. The fuel (exactly: hydro-carbon used as reducing agent) applied in the plant is LPG with a major mass fraction of propane (about 95%).

## (b) Parameters of plant Hu-Chems III

Data/Parameter	P <sub>production,y,III</sub>
Unit	tHNO <sub>3</sub>
Description	Nitric acid produced in year y of Hu-Chems III
Measured/calculated/default	Measured
Source of data	Production reports (based on measurements from PP) NA flow and density are measured with a coriolis flow meter, temperature with a temperature measurement and concentration is determined based on measured parameters. Values are sent to the DCS (control room), and the NA production (as 100% HNO <sub>3</sub> ) is calculated based on mass flow and HNO <sub>3</sub> concentration. Final production values are exported in production reports through the Delta V system. Please refer to section C. <i>Information Flow</i> of this MR.
Value(s) of monitored parameter	<b>36,936</b> An excel book containing recorded hourly values is attached to this MR.
Monitoring equipment	Meter location: Located in the NA line, downstream of the absorption tower (323-N-301). Please refer to section C. <i>Line diagram</i> of this MR.  <b>323-FT-3-512</b> Type: Coriolis Flowmeter Accuracy class: ± 0.1% Calibration frequency: 60 months Serial number: 14266864 Date of last calibration: 20/05/2020 (Validity: 19/05/2025)  <b>323-TI-3-127</b> Type: Temperature Converter Accuracy class: ± 0.15°C ± 0.03% of span (according to IEC751) Calibration frequency: 24 months Serial Number: 51309204-125 Date of last calibration: 20/05/2020 (Validity: 19/05/2022)
Measuring/reading/recording frequency	Measuring: Continuously Reading: 10 seconds Recording: Hourly
Calculation method (if applicable)	N/A

QA/QC procedures	QA/QC procedures in terms of equipment operation and maintenance for monitoring instruments used for CDM Monitoring have been incorporated as part of the ISO 9001 and ISO 14001 procedures of Hu-Chems. Accordingly, calibration and maintenance are part of regular QA/QC of the NA plant. Please also refer to section C. <i>Back Up plans / Emergency procedures for monitoring system</i> of this MR and respective subitems <i>Back Up Plans for measuring systems / Periodic observation of the AMS and Systematic measures for QA for monitoring data during analyser down times</i> .
Purpose of data/parameter	Calculation of baseline emissions
Additional comments	The parameter $P_{NA,h,III}$ (NA produced in hour h of Hu-Chems III) represents the hourly value of $P_{production,y,III}$ and is used for determining $h_{r,y,III}$ as per the applied methodology.

<b>Data/Parameter</b>	<b><math>h_{y,III}</math></b>
Unit	h
Description	Number of hours of operation in year y of Hu-Chems III
Measured/calculated/default	Measured
Source of data	Measuring device (Please refer to monitoring equipment below and to section C. <i>Information Flow</i> of this MR.)
Value(s) of monitored parameter	<b>2,898</b> An excel book containing recorded hourly values is attached to this MR.
Monitoring equipment	<p>Meter location: Located in the ammonia supply line, upstream of the ammonia oxidation reactor (323-K-302). Please refer to section C. <i>Line diagram</i> of this MR.</p> <p><b>323-FT-3-503</b> Type: Differential pressure transmitter Accuracy class: <math>\pm 0.065\%</math> of span Calibration frequency: 48 months Serial number: 2052134 Date of last calibration: 19/05/2020 (Validity: 18/05/2024)</p> <p><b>323-TT-3-103</b> Type: Temperature transmitter Accuracy class: <math>\pm 0.15^{\circ}\text{C} \pm 0.03\%</math> of span (according to IEC751) Calibration frequency: 24 months Serial number: 1809794 Date of last calibration: 19/05/2020 (Validity: 18/05/2022)</p> <p><b>323-PT-3-303</b> Type: Pressure transmitter Accuracy class: <math>\pm 0.1\%</math> of span Calibration frequency: 48 months Serial number: 2052136 Date of last calibration: 20/05/2020 (Validity: 19/05/2024)</p>
Measuring/reading/recording frequency	Measuring: Continuously Reading: 10 Seconds Recording: Hourly
Calculation method (if applicable)	The flow of $\text{NH}_3$ to the ammonia oxidation reactor indicates the operational status. In case, the volume flow of $\text{NH}_3$ to the ammonia oxidation reactor lies above the threshold of $500 \text{ Nm}^3/\text{h}$ during an hour, the reactor is considered in operation during the hour.
QA/QC procedures	QA/QC procedures in terms of equipment operation and maintenance for monitoring instruments used for CDM Monitoring have been incorporated as part of the ISO 9001 and ISO 14001 procedures of Hu-Chems. Accordingly, calibration and maintenance are part of regular QA/QC of the NA plant. Please also refer to section C. <i>Back Up plans / Emergency procedures for monitoring system</i> of this MR and respective subitems <i>Back Up Plans for measuring systems / Periodic observation of the AMS and Systematic measures for QA for monitoring data during analyser down times</i> .
Purpose of data/parameter	Calculation of baseline and project emissions
Additional comments	Records to be maintained during project's lifetime.

<b>Data/Parameter</b>	<b><math>h_{r,y,III}</math></b>
Unit	h
Description	For tertiary $\text{N}_2\text{O}$ abatement, Number of hours ( <i>h</i> ) in year y where the abatement system is by-passed, underperforming or failed of Hu-Chems III

Measured/calculated/default	Measured
Source of data	Measuring device (Please refer to monitoring equipment below and to section C. <i>Information Flow</i> of this MR.)
Value(s) of monitored parameter	<b>22</b>
Monitoring equipment	<p>NA plant Hu-Chems III has used AM0028 in the 1<sup>st</sup> crediting period, accordingly the abatement system is deemed to be by-passed, not working or failed in the hour h in year y if:</p> $F_{N2O,tailgas,h,III} > EF_{existing,y,III} \times P_{NA,h,III}$ <p>The parameters mentioned above are determined and measured/monitored as explained in the respective sections of this MR:</p> <ul style="list-style-type: none"> <li>• <math>P_{NA,h,III}</math> – determination is based on the monitored parameter <math>P_{production,y,III}</math></li> <li>• <math>F_{N2O,tailgas,h,III}</math> – determination is based on the monitored parameters <math>V_{t,db,n,III}</math>, <math>V_{i,t,db,III}</math> and <math>CH_{2O,t,db,n,III}</math></li> </ul> <p><math>EF_{existing,y,III}</math> – determination is based on the ex-ante determined parameters <math>EF_{historical,III}</math> and <math>EF_{default,y,III}</math></p>
Measuring/reading/recording frequency	Measuring: Continuously Reading: Hourly Recording: Hourly
Calculation method (if applicable)	(Refer to “Monitoring equipment” above)
QA/QC procedures	QA/QC procedures in terms of equipment operation and maintenance for monitoring instruments used for CDM Monitoring have been incorporated as part of the ISO 9001 and ISO 14001 procedures of Hu-Chems. Accordingly, calibration and maintenance are part of regular QA/QC of the NA plant. Please also refer to section C. <i>Back Up plans / Emergency procedures for monitoring system</i> of this MR and respective subitems <i>Back Up Plans for measuring systems / Periodic observation of the AMS and Systematic measures for QA for monitoring data during analyser down times.</i>
Purpose of data/parameter	Calculation of baseline and project emissions
Additional comments	Records to be maintained during project’s lifetime. The parameter $P_{NA,h,III}$ as used in the formula (NA produced in hour h of Hu-Chems III) represents the hourly value of $P_{production,y,III}$ .

Parameters from “Tool to determine the mass flow of a greenhouse gas in a gaseous stream”

Data/Parameter	$V_{t,db,III}$
Unit	m <sup>3</sup> dry gas/h
Description	Volumetric flow of the gaseous stream in time interval t on a dry basis of Hu-Chems III
Measured/calculated/default	Measured
Source of data	Measuring device (Please refer to monitoring equipment below and to section C. <i>Information Flow</i> of this MR.)
Value(s) of monitored parameter	<b>45,607</b> The value represents an average over the monitoring period. An excel book containing recorded hourly values is attached to this MR.
Monitoring equipment	<p>Meter location: Located in the stack at the end of the tail gas line.</p> <p><b>323-FT-3-522</b> Type: Annubar / Differential pressure transmitter Accuracy class: ± 2% of span Calibration frequency: 60 months (QAL 2 reference measurement) Serial number: 1240832 Date of last QAL 2: 20/08/2019 – 22/08/2019 (Validity: 19/08/2024) Date of last AST: 14/10/2020 – 15/10/2020</p>
Measuring/reading/recording frequency	Measuring: Continuously Reading: Every 1 second Recording: Hourly
Calculation method (if applicable)	N/A

QA/QC procedures	QA/QC procedures in terms of equipment operation and maintenance for monitoring instruments used for CDM Monitoring have been incorporated as part of the ISO 9001 and ISO 14001 procedures of Hu-Chems. Accordingly, calibration and maintenance are part of regular QA/QC of the NA plant (please refer to section C.). Calibration against a primary device provided by an independent accredited laboratory follows EN 14181 requirements (QAL 2 reference measurement). Please refer to section C. <i>Back Up plans / Emergency procedures for monitoring system</i> of this MR and respective subitems <i>Back Up Plans for measuring systems / Periodic observation of the AMS and Systematic measures for QA for monitoring data during analyser down times</i> .
Purpose of data/parameter	Calculation of project emissions
Additional comments	Option A parameter according to the applied "Tool to determine the mass flow of a greenhouse gas in a gaseous stream". The volumetric flow is determined and expressed at normal conditions ( $P_n = 101,325 \text{ Pa}$ ; $T_n = 273.15 \text{ K}$ ) according to the applied methodology. Monitoring of actual conditions ( $P_{t,III}$ , $T_{t,III}$ ) is therefore not necessary as per the applied methodology. Dry basis flow measurement, since gaseous stream is considered to be dry (refer to parameter $\text{CH}_2\text{O}_{t,db,n,III}$ ).

<b>Data/Parameter</b>	<b><math>V_{i,t,db,III}</math></b>
Unit	$\text{m}^3 \text{ gas } i / \text{m}^3 \text{ dry gas } (\rightarrow \text{m}^3 \text{ N}_2\text{O} / \text{m}^3 \text{ dry gas})$
Description	Volumetric fraction of greenhouse gas $i$ in a time interval $t$ on a dry basis of Hu-Chems III
Measured/calculated/default	Measured
Source of data	Measuring device (Please refer to monitoring equipment below and to section C. <i>Information Flow</i> of this MR.)
Value(s) of monitored parameter	<b><math>7.74 \cdot 10^{-5}</math></b> The value represents an average over the monitoring period. An excel book containing recorded hourly values is attached to this MR.
Monitoring equipment	Meter location: Sample take-off is located in the tail gas line, downstream of the EnviNOx® reactor (323-R-302) and leads (via sample gas line) to the locked analyser house III (located closely to EnviNOx® reactor of Hu-Chems III), where the analyser is installed. Please refer to section C. <i>Line diagram</i> of this MR.  <b>323-AT-3-0127</b> Type: NDIR Analyser Accuracy class: $\pm 1\%$ (zero/span) Calibration frequency: 60 months (QAL 2 reference measurement) Serial number: 990861497815 Date of last QAL 2: 20/08/2019 – 22/08/2019 (Validity: 19/08/2024) Date of last AST: 14/10/2020 – 15/10/2020
Measuring/reading/recording frequency	Measuring: Continuously Reading: Every 1 second Recording: Hourly
Calculation method (if applicable)	N/A
QA/QC procedures	QA/QC procedures in terms of equipment operation and maintenance for monitoring instruments used for CDM Monitoring have been incorporated as part of the ISO 9001 and ISO 14001 procedures of Hu-Chems. Accordingly, calibration and maintenance are part of regular QA/QC of the NA plant (please refer to section C.). Calibration against a primary device provided by an independent accredited laboratory follows EN 14181 requirements (QAL 2 reference measurement). EPMK has been mandated to conduct monthly analyser health checks and quarterly inspection checks to ensure good instrument condition. Please refer to section C. <i>Back Up plans / Emergency procedures for monitoring system</i> of this MR and respective subitems <i>Back Up Plans for measuring systems / Periodic observation of the AMS and Systematic measures for QA for monitoring data during analyser down times</i> .
Purpose of data/parameter	Calculation of project emissions
Additional comments	The volumetric fraction of $\text{N}_2\text{O}$ is determined and expressed at normal conditions ( $P_n = 101,325 \text{ Pa}$ ; $T_n = 273.15 \text{ K}$ ) according to the applied methodology. Monitoring of actual conditions ( $P_{t,III}$ , $T_{t,III}$ ) is therefore not necessary as per the applied methodology.



Data/Parameter	CH <sub>2</sub> O,t,db,n,III
Unit	mg H <sub>2</sub> O/m <sup>3</sup> dry gas
Description	Moisture content of the gaseous stream at normal conditions, in time interval t of Hu-Chems III
Measured/calculated/default	Measured
Source of data	Measurements according to the USEPA CF42 method 4 – Gravimetric determination of water content (Measurement Report)
Value(s) of monitored parameter	<b>9,333</b> (equivalent to 0.009 kg H <sub>2</sub> O/m <sup>3</sup> dry gas)
Monitoring equipment	As per USEPA CF42 method 4 – Gravimetric determination of water content
Measuring/reading/recording frequency	As per the PDD, measurements coincide with the Annual Surveillance Test (AST) or the calibration of the flow meter for the gaseous stream (QAL 2), both associated with requirements of the EN 14181 standard. Repeated measurements were conducted during last AST.
Calculation method (if applicable)	N/A
QA/QC procedures	According to USEPA CF 42 method 4
Purpose of data/parameter	Calculation of project emissions
Additional comments	<p>As per the applied “Tool to determine the mass flow of a greenhouse gas in a gaseous stream” flow and volumetric fraction may be measured on a dry or wet basis. The tool covers the possible measurement combinations, providing six different calculation options to determine the mass flow of a particular GHG (Option A to F). As described in the PDD, the option chosen for this project activity is Option A, requiring to demonstrate that the gaseous stream is dry, whereas the tool suggests two ways to do this:</p> <ul style="list-style-type: none"> <li>(a) Measure the moisture content of the gaseous stream (CH<sub>2</sub>O,t,db,n) and demonstrate that this is less or equal to 0.05 kg H<sub>2</sub>O/m<sup>3</sup> dry gas; or</li> <li>(b) Demonstrate that the temperature of the gaseous stream (T<sub>i</sub>) is less than 60°C (333.15 K) at the flow measurement point.</li> </ul> <p>In the case of this project activity, the 1<sup>st</sup> option (a) has been chosen.</p> <p>The measured value as noted above shows that the moisture content of the gaseous stream is significantly below the maximum threshold value of 0.05 kg H<sub>2</sub>O/m<sup>3</sup> dry gas.</p>

Since the volumetric fraction of N<sub>2</sub>O and the volumetric flow of the gaseous stream are both determined and expressed at normal conditions (P<sub>n</sub> = 101,325 Pa; T<sub>n</sub> = 273.15 K), the actual conditions (P<sub>t,III</sub>, T<sub>t,III</sub>) are not required to be monitored, as per the applied methodology.

Parameters from “Tool to calculate project or leakage CO<sub>2</sub> emissions from fossil fuel combustion”

Data/Parameter	FC <sub>i,j,y,III</sub>
Unit	t/yr
Description	Quantity of fuel type i combusted in process j during the year y of Hu-Chems III
Measured/calculated/default	Measured
Source of data	Measuring device (Please refer to monitoring equipment below and to section C. <i>Information Flow</i> of this MR.)
Value(s) of monitored parameter	<b>94.55</b> An excel book containing recorded hourly values is attached to this MR.
Monitoring equipment	<p>Meter location: Located in the propane gas line, upstream of the EnviNO<sub>x</sub>® reactor (323-R-302). Please refer to section C. <i>Line diagram</i> of this MR.</p> <p><b>323-FT-3-5121</b>            Type: Coriolis flow meter            Accuracy class: ± 0.35%            Calibration frequency: 60 months            Serial number: 14125454            Date of last calibration: 20/05/2020 (Validity: 19/05/2025)</p>
Measuring/reading/recording frequency	Measuring: Continuously Reading: Every 10 seconds Recording: Hourly

Calculation method (if applicable)	N/A
QA/QC procedures	QA/QC procedures in terms of equipment operation and maintenance for monitoring instruments used for CDM Monitoring have been incorporated as part of the ISO 9001 and ISO 14001 procedures of Hu-Chems. Accordingly, calibration and maintenance are part of regular QA/QC of the NA plant (please refer to section C.). As far as feasible, the consistency of metered fuel consumption quantities is cross-checked for plausibility by an annual energy balance that is based on purchased quantities and stock changes. Furthermore and as far as feasible, where the purchased fuel invoices can be identified specifically for the CDM project (and the specific plant, respectively), the metered fuel consumption quantities are cross-checked with available purchase invoices from the financial records. <i>Please refer to section C. Back Up plans / Emergency procedures for monitoring system of this MR and respective subitems Back Up Plans for measuring systems / Periodic observation of the AMS and Systematic measures for QA for monitoring data during analyser down times.</i>
Purpose of data/parameter	Calculation of project emissions
Additional comments	The fuel (exactly: hydrocarbon used as reducing agent) applied in the plant is LPG with a major mass fraction of propane (expected levels above 95%).

<b>Data/Parameter</b>	<b>WC<sub>i,y,III</sub></b>
Unit	tC/t
Description	Weighted average mass fraction of carbon in fuel type i in year y of Hu-Chems III
Measured/calculated/default	Measured (by hydrocarbon supplier)
Source of data	Certificate of hydrocarbon supplier
Value(s) of monitored parameter	<b>0.82</b>
Monitoring equipment	Composition of the delivered hydrocarbon is measured by the supplier and provided on specific certificates.
Measuring/reading/recording frequency	Measuring: In order to assure conservativeness a certificate from the hydrocarbon supplier is requested at least on a yearly basis.
Calculation method (if applicable)	Composition of delivered hydrocarbon is available on specific certificates provided by the supplier. The mass fraction of carbon is obtained regularly, from which weighted average annual values are calculated.
QA/QC procedures	It is verified, if the applied value is within the uncertainty range of the IPCC default values as provided in Table 1.2, Vol. 2 of the 2006 IPCC Guidelines.
Purpose of data/parameter	Calculation of project emissions
Additional comments	Applicable where Option A of the "Tool to calculate project or leakage CO <sub>2</sub> emissions from fossil fuel combustion" is used. The fuel (exactly: hydrocarbon used as reducing agent) applied in the plant is LPG with a major mass fraction of propane (about 95%).

### (c) Parameters of plant Hu-Chems IV

<b>Data/Parameter</b>	<b>P<sub>production,y,IV</sub></b>
Unit	tHNO <sub>3</sub>
Description	Nitric acid produced in year y of Hu-Chems IV
Measured/calculated/default	Measured
Source of data	Production reports (based on measurements from PP) NA flow and density are measured with a coriolis flow meter, temperature with a temperature measurement and concentration is determined based on measured parameters. Values are sent to the DCS (control room), and the NA production (as 100% HNO <sub>3</sub> ) is calculated based on mass flow and HNO <sub>3</sub> concentration. Final production values are exported in production reports through the Delta V System. Please refer to section C. Information Flow of this MR.
Value(s) of monitored parameter	<b>149,193</b> An excel book containing recorded hourly values is attached to this MR.

Monitoring equipment	<p>Meter location: Located in the NA line, downstream of the absorption tower (324-N-401). Please refer to section C. <i>Line diagram</i> of this MR.</p> <p><b>324-FT-4-609</b>  Type: Coriolis Flowmeter  Accuracy class: <math>\pm 0.1\%</math>  Calibration frequency: 60 months  Serial number: 14735413  Date of last calibration: 18/10/2017 (Validity: 17/10/2022)</p> <p><b>324-TT-4-237</b>  Type: Temperature Transmitter  Accuracy class: <math>\pm 0.15^{\circ}\text{C} \pm 0.03\%</math> of span (according to IEC751)  Calibration frequency: 24 months  Serial number: 966595  Date of last calibration: 04/11/2020 (Validity: 03/11/2022)</p>
Measuring/reading/recording frequency	Measuring: Continuously Reading: 10 seconds Recording: Hourly
Calculation method (if applicable)	N/A
QA/QC procedures	QA/QC procedures in terms of equipment operation and maintenance for monitoring instruments used for CDM Monitoring have been incorporated as part of the ISO 9001 and ISO 14001 procedures of Hu-Chems. Accordingly, calibration and maintenance are part of regular QA/QC of the NA plant. Please also refer to section C. <i>Back Up plans / Emergency procedures for monitoring system</i> of this MR and respective subitems <i>Back Up Plans for measuring systems / Periodic observation of the AMS and Systematic measures for QA for monitoring data during analyser down times.</i>
Purpose of data/parameter	Calculation of baseline emissions
Additional comments	The parameter $P_{\text{NA},h,IV}$ (NA produced in hour h of Hu-Chems IV) represents the hourly value of $P_{\text{production},y,IV}$ and is used for determining $h_{r,y,IV}$ as per the applied methodology.

<b>Data/Parameter</b>	<b><math>h_{y,IV}</math></b>
Unit	h
Description	Number of hours of operation in year y of Hu-Chems IV
Measured/calculated/default	Measured
Source of data	Measuring device (Please refer to monitoring equipment below and to section C. <i>Information Flow</i> of this MR.)
Value(s) of monitored parameter	<b>2,886</b> An excel book containing recorded hourly values is attached to this MR.
Monitoring equipment	<p>Meter location: Located in the ammonia supply line, upstream of the ammonia oxidation reactor (324-K-402). Please refer to section C. <i>Line diagram</i> of this MR.</p> <p><b>324-FT-4-5020</b>  Type: Coriolis flowmeter  Accuracy class: <math>\pm 0.35\%</math>  Calibration frequency: 60 months  Serial number: 14137655  Date of penultimate calibration: 22/03/2016 (Validity: 21/03/2021)  Date of last calibration: 13/09/2021 (Validity: 12/09/2026)</p>
Measuring/reading/recording frequency	Measuring: Continuously Reading: 10 seconds Recording: Hourly
Calculation method (if applicable)	The flow of $\text{NH}_3$ to the ammonia oxidation reactor indicates the operational status. In case, the volume flow of $\text{NH}_3$ to the ammonia oxidation reactor lies above the threshold of $500 \text{ Nm}^3/\text{h}$ during an hour, the reactor is considered in operation during the hour.

QA/QC procedures	QA/QC procedures in terms of equipment operation and maintenance for monitoring instruments used for CDM Monitoring have been incorporated as part of the ISO 9001 and ISO 14001 procedures of Hu-Chems. Accordingly, calibration and maintenance are part of regular QA/QC of the NA plant. Please also refer to section C. <i>Back Up plans / Emergency procedures for monitoring system</i> of this MR and respective subitems <i>Back Up Plans for measuring systems / Periodic observation of the AMS and Systematic measures for QA for monitoring data during analyser down times.</i>
Purpose of data/parameter	Calculation of baseline and project emissions
Additional comments	Records to be maintained during project's lifetime.

<b>Data/Parameter</b>	<b><math>h_{r,y,IV}</math></b>
Unit	h
Description	For tertiary N <sub>2</sub> O abatement, Number of hours ( <i>h</i> ) in year <i>y</i> where the abatement system is by-passed, underperforming or failed of Hu-Chems IV
Measured/calculated/default	Measured
Source of data	Measuring device (Please refer to monitoring equipment below and to section C. <i>Information Flow</i> of this MR.)
Value(s) of monitored parameter	<b>5</b>
Monitoring equipment	<p>NA plant Hu-Chems IV has used AM0028 in the 1<sup>st</sup> crediting period, accordingly the abatement system is deemed to be by-passed, not working or failed in the hour <i>h</i> in year <i>y</i> if:</p> $F_{N2O,tailgas,h,IV} > EF_{existing,y,IV} \times P_{NA,h,IV}$ <p>The parameters mentioned in the formula are determined and measured as explained in the respective sections of this MR:</p> <ul style="list-style-type: none"> <li><math>P_{NA,h,IV}</math> – determination is based on the monitored parameter <math>P_{production,y,IV}</math></li> <li><math>F_{N2O,tailgas,h,IV}</math> – determination is based on the monitored parameters <math>V_{t,db,IV}</math>, <math>V_{t,t,db,IV}</math> and <math>C_{H2O,t,db,n,IV}</math></li> </ul> <p><math>EF_{existing,y,IV}</math> – determination is based on the ex-ante determined parameters <math>EF_{historical,IV}</math> and <math>EF_{default,y,IV}</math></p>
Measuring/reading/recording frequency	Measuring: Continuously Reading: Hourly Recording: Hourly
Calculation method (if applicable)	(Refer to “Monitoring equipment” above)
QA/QC procedures	QA/QC procedures in terms of equipment operation and maintenance for monitoring instruments used for CDM Monitoring have been incorporated as part of the ISO 9001 and ISO 14001 procedures of Hu-Chems. Accordingly, calibration and maintenance are part of regular QA/QC of the NA plant. Please also refer to section C. <i>Back Up plans / Emergency procedures for monitoring system</i> of this MR and respective subitems <i>Back Up Plans for measuring systems / Periodic observation of the AMS and Systematic measures for QA for monitoring data during analyser down times.</i>
Purpose of data/parameter	Calculation of baseline and project emissions
Additional comments	Records to be maintained during project's lifetime. The parameter $P_{NA,h,IV}$ as used in the formula (NA produced in hour <i>h</i> of Hu-Chems IV) represents the hourly value of $P_{production,y,IV}$ .

Parameters from “Tool to determine the mass flow of a greenhouse gas in a gaseous stream”

<b>Data/Parameter</b>	<b><math>V_{t,db,IV}</math></b>
Unit	m <sup>3</sup> dry gas/h
Description	Volumetric flow of the gaseous stream in time interval <i>t</i> on a dry basis of Hu-Chems IV
Measured/calculated/default	Measured
Source of data	Measuring device (Please refer to monitoring equipment below and to section C. <i>Information Flow</i> of this MR.)
Value(s) of monitored parameter	<b>174,723</b> The value represents an average over the monitoring period. An excel book containing recorded hourly values is attached to this MR.

Monitoring equipment	<p>Meter location: Located in the stack at the end of the tail gas line.</p> <p><b>324-FT-4-522</b>            Type: Annubar / Differential pressure transmitter            Accuracy class: <math>\pm 2\%</math> of span            Calibration frequency: 60 months (QAL 2 reference measurement)            Serial number: 1240834            Date of last QAL 2: 28/08/2017 – 30/08/2017 (Validity: 27/08/2022)            Date of last AST: 12/10/2020 – 13/10/2020</p>
Measuring/reading/recording frequency	<p>Measuring: Continuously            Reading: Every 1 second            Recording: Hourly</p>
Calculation method (if applicable)	N/A
QA/QC procedures	<p>QA/QC procedures in terms of equipment operation and maintenance for monitoring instruments used for CDM Monitoring have been incorporated as part of the ISO 9001 and ISO 14001 procedures of Hu-Chems. Accordingly, calibration and maintenance are part of regular QA/QC of the NA plant (please refer to section C.). QA/QC procedure consider requirements as per EN 14181 – Calibration against a primary device provided by an independent accredited laboratory follows EN 14181 requirements (QAL 2 reference measurement).            Please refer to section C. <i>Back Up plans / Emergency procedures for monitoring system</i> of this MR and respective subitems <i>Back Up Plans for measuring systems / Periodic observation of the AMS and Systematic measures for QA for monitoring data during analyser down times.</i></p>
Purpose of data/parameter	Calculation of project emissions
Additional comments	<p>Option A parameter according to the applied "Tool to determine the mass flow of a greenhouse gas in a gaseous stream". The volumetric flow is determined and expressed at normal conditions (<math>P_n = 101,325 \text{ Pa}</math>; <math>T_n = 273.15 \text{ K}</math>) according to the applied methodology. Monitoring of actual conditions (<math>P_{t,IV}</math>, <math>T_{t,IV}</math>) is therefore not necessary, as per the applied methodology. Dry basis flow measurement, since gaseous stream is considered to be dry (refer to parameter <math>C_{H_2O,t,db,n,IV}</math>).</p>

Data/Parameter	$V_{i,t,db,IV}$
Unit	$\text{m}^3 \text{ gas} / \text{m}^3 \text{ dry gas} (\rightarrow \text{m}^3 \text{ N}_2\text{O} / \text{m}^3 \text{ dry gas})$
Description	Volumetric fraction of greenhouse gas $i$ in a time interval $t$ on a dry basis of Hu-Chems IV
Measured/calculated/default	Measured
Source of data	Measuring device (Please refer to monitoring equipment below and to section C. <i>Information Flow</i> of this MR.)
Value(s) of monitored parameter	<p><b><math>9.05 \times 10^{-5}</math></b>            The value represents an average over the monitoring period. An excel book containing recorded hourly values is attached to this MR.</p>
Monitoring equipment	<p>Meter location: Sample take-off is located in the tail gas line, downstream of the EnviNOx® reactor (324-R-402) and leads (via sample gas line) to the locked analyser house IV (located closely to the EnviNOx® reactor of Hu-Chems plant IV), where the analyser is installed. Please refer to section C. <i>Line diagram</i> of this MR.</p> <p><b>324-AT-4-0107</b>            Type: NDIR Analyser            Accuracy class: <math>\pm 1\%</math> (zero/span)            Calibration frequency: 60 months (QAL 2 reference measurement)            Serial number: 990861497818            Date of last QAL 2: 28/08/2017 – 30/08/2017 (Validity: 27/08/2022)            Date of last AST: 12/10/2020 – 13/10/2020</p>
Measuring/reading/recording frequency	<p>Measuring: Continuously            Reading: Every 1 second            Recording: Hourly</p>
Calculation method (if applicable)	N/A

QA/QC procedures	QA/QC procedures in terms of equipment operation and maintenance for monitoring instruments used for CDM Monitoring have been incorporated as part of the ISO 9001 and ISO 14001 procedures of Hu-Chems. Accordingly, calibration and maintenance are part of regular QA/QC of the NA plant (please refer to section C). QA/QC procedure consider requirements as per EN 14181 – Calibration against a primary device provided by an independent accredited laboratory follows EN 14181 requirements (QAL 2 reference measurement). EMPK has been mandated to conduct monthly analyser health checks and quarterly inspection checks to ensure good instrument condition. Please refer to section C. <i>Back Up plans / Emergency procedures for monitoring system</i> of this MR and respective subitems <i>Back Up Plans for measuring systems / Periodic observation of the AMS and Systematic measures for QA for monitoring data during analyser down times</i> .
Purpose of data/parameter	Calculation of project emissions
Additional comments	The volumetric fraction of N <sub>2</sub> O is determined and expressed at normal conditions (P <sub>n</sub> = 101,325 Pa; T <sub>n</sub> = 273.15 K) according to the applied methodology. Monitoring of actual conditions (P <sub>t,IV</sub> , T <sub>t,IV</sub> ) is therefore not necessary, as per the applied methodology.

Data/Parameter	C <sub>H2O,t,db,n,IV</sub>
Unit	mg H <sub>2</sub> O/m <sup>3</sup> dry gas
Description	Moisture content of the gaseous stream at normal conditions, in time interval t of Hu-Chems IV
Measured/calculated/default	Measured
Source of data	Measurements according to the USEPA CF42 method 4 – Gravimetric determination of water content (Measurement Report)
Value(s) of monitored parameter	7,000 (equivalent to 0.007 kg H <sub>2</sub> O/m <sup>3</sup> dry gas)
Monitoring equipment	As per USEPA CF42 method 4 – Gravimetric determination of water content
Measuring/reading/recording frequency	As per the PDD, measurements coincide with the Annual Surveillance Test (AST) or the calibration of the flow meter for the gaseous stream (QAL 2), both associated with requirements of the EN 14181 standard. Repeated measurements were conducted during last AST.
Calculation method (if applicable)	N/A
QA/QC procedures	According to USEPA CF 42 method 4
Purpose of data/parameter	Calculation of project emissions
Additional comments	As per the applied "Tool to determine the mass flow of a greenhouse gas in a gaseous stream" flow and volumetric fraction may be measured on a dry or wet basis. The tool covers the possible measurement combinations, providing six different calculation options to determine the mass flow of a particular GHG (Option A to F). As described in the PDD, the option chosen for this project activity is Option A, requiring to demonstrate that the gaseous stream is dry, whereas the tool suggests two ways to do this: (a) Measure the moisture content of the gaseous stream (C <sub>H2O,t,db,n</sub> ) and demonstrate that this is less or equal to 0.05 kg H <sub>2</sub> O/m <sup>3</sup> dry gas; or (b) Demonstrate that the temperature of the gaseous stream (T <sub>i</sub> ) is less than 60°C (333.15 K) at the flow measurement point. In the case of this project activity, the 1 <sup>st</sup> option (a) has been chosen.  The measured value as noted above shows that the moisture content of the gaseous stream is significantly below the maximum threshold value of 0.05 kg H <sub>2</sub> O/m <sup>3</sup> dry gas.

Since the volumetric fraction of N<sub>2</sub>O and the volumetric flow of the gaseous stream are both determined and expressed at normal conditions (P<sub>n</sub> = 101,325 Pa; T<sub>n</sub> = 273.15 K), the actual conditions (P<sub>t,IV</sub>, T<sub>t,IV</sub>) are not required to be monitored, as per the applied methodology.

### D.3. Implementation of sampling plan

>>

Not applicable for the project activity.

## SECTION E. Calculation of emission reductions or net anthropogenic removals

All references to formulae and methods used are in compliance with ACM0019, applicable tools and project documentation (PDD, monitoring plan) and are transparently shown in the excel books attached to this MR. They contain recorded monitored data, a comprehensive calculation of baseline emissions, project emissions and emission reductions with actual values (formulae of calculation are shown in the spreadsheet for ease of assessment). Additionally, since this MP started after 01/01/2021 project participants followed applicable rules of “Clarification: Regulatory requirements under temporary measures for post-2020 cases” (CDM-EB109-A01-CLAR).

### E.1. Calculation of baseline emissions or baseline net removals

>>

Overall baseline emissions for the project activity are calculated as sum over the separately determined, plant specific baseline emissions as per following equation:

$$BE_y = BE_{y,II} + BE_{y,III} + BE_{y,IV}$$

Where:

$BE_y$	=	Baseline emissions in year $y$ (t CO <sub>2</sub> e)
$BE_{y,II}$	=	Baseline emissions of plant Hu-Chems II in year $y$ (t CO <sub>2</sub> e)
$BE_{y,III}$	=	Baseline emissions of plant Hu-Chems III in year $y$ (t CO <sub>2</sub> e)
$BE_{y,IV}$	=	Baseline emissions of plant Hu-Chems IV in year $y$ (t CO <sub>2</sub> e)

The values for the present period are:

$BE_y$	$BE_{y,II}$	$BE_{y,III}$	$BE_{y,IV}$
tCO <sub>2</sub> e	tCO <sub>2</sub> e	tCO <sub>2</sub> e	tCO <sub>2</sub> e
<b>435,391</b>	103,575	106,852	224,964

Plant specific baseline emissions are calculated separately for each NA plant as per the PDD, using the same set of equations for each plant as shown below.

$$BE_y = \left( \min\{P_{production,y}; P_{product,max}\} \times EF_{existing,y} + \max\{P_{production,y} - P_{product,max}; 0\} \times EF_{new,y} \right) \times \frac{(h_y - h_{r,y})}{h_y} \times GWP_{N2O} \times 10^{-3}$$

Where:

$BE_y$	=	Baseline emissions in year $y$ (t CO <sub>2</sub> e)
$P_{product,max}$	=	Design capacity (t HNO <sub>3</sub> )
$P_{production,y}$	=	Production of nitric acid in year $y$ (t HNO <sub>3</sub> )
$EF_{existing,y}$	=	N <sub>2</sub> O emission factor for nitric acid plants that have used AM0028 or AM0034 in the first crediting period in year $y$ (kg N <sub>2</sub> O/t HNO <sub>3</sub> )
$EF_{new,y}$	=	Baseline N <sub>2</sub> O emission factor for nitric acid production in year $y$ (kg N <sub>2</sub> O/t HNO <sub>3</sub> )
$GWP_{N2O}$	=	Global Warming Potential of N <sub>2</sub> O valid for the commitment period
$h_y$	=	Number of hours in year $y$ during which the plant was in operation ( $h$ )
$h_{r,y}$	=	Number of hours ( $h$ ) in year $y$ where: <ol style="list-style-type: none"> <li>For secondary N<sub>2</sub>O abatement: the abatement system was not installed, underperforming or failed;</li> <li>For tertiary N<sub>2</sub>O abatement: the abatement system is by-passed, underperforming or failed</li> </ol>

The values for the present period are:

<b>BE<sub>y,II</sub> *)</b>	<b>EF<sub>existing,y,II</sub></b>	<b>EF<sub>new,y</sub></b>	<b>P<sub>production,y,II</sub></b>	<b>P<sub>product,max,II</sub></b>	<b>h<sub>y,II</sub></b>	<b>h<sub>r,y,II</sub></b>	<b>GWP<sub>N2O</sub> **)</b>
tCO <sub>2</sub> e	kgN <sub>2</sub> O / tHNO <sub>3</sub>	kgN <sub>2</sub> O / tHNO <sub>3</sub>	tHNO <sub>3</sub>	tHNO <sub>3</sub>	h	h	tCO <sub>2</sub> e / tN <sub>2</sub> O
<b>103,575</b>	11.00	2.50	35,776	40,960	2,788	19	265
<b>BE<sub>y,III</sub> *)</b>	<b>EF<sub>existing,y,III</sub></b>	<b>EF<sub>new,y</sub></b>	<b>P<sub>production,y,III</sub></b>	<b>P<sub>product,max,III</sub></b>	<b>h<sub>y,III</sub></b>	<b>h<sub>r,y,III</sub></b>	<b>GWP<sub>N2O</sub> **)</b>
tCO <sub>2</sub> e	kgN <sub>2</sub> O / tHNO <sub>3</sub>	kgN <sub>2</sub> O / tHNO <sub>3</sub>	tHNO <sub>3</sub>	tHNO <sub>3</sub>	h	h	tCO <sub>2</sub> e / tN <sub>2</sub> O
<b>106,852</b>	11.00	2.50	36,936	40,960	2,898	22	265
<b>BE<sub>y,IV</sub> *)</b>	<b>EF<sub>existing,y,IV</sub></b>	<b>EF<sub>new,y</sub></b>	<b>P<sub>production,y,IV</sub></b>	<b>P<sub>product,max,IV</sub></b>	<b>h<sub>y,IV</sub></b>	<b>h<sub>r,y,IV</sub></b>	<b>GWP<sub>N2O</sub> **)</b>
tCO <sub>2</sub> e	kgN <sub>2</sub> O / tHNO <sub>3</sub>	kgN <sub>2</sub> O / tHNO <sub>3</sub>	tHNO <sub>3</sub>	tHNO <sub>3</sub>	h	h	tCO <sub>2</sub> e / tN <sub>2</sub> O
<b>224,964</b>	5.70	2.50	149,193	163,840	2,886	5	265

\*) Values are conservatively rounded down.

\*\*) Acc. to "Clarification: Regulatory requirements under temporary measures for post-2020 cases" (CDM-EB109-A01-CLAR)

The plant specific N<sub>2</sub>O emission factor for NA plants that have used AM0028 or AM0034 in the 1<sup>st</sup> crediting period (EF<sub>existing,y</sub>) is calculated based on following equation:

$$EF_{existing,y} = \min\{EF_{historical}; EF_{default,y}\}$$

Where:

$EF_{existing,y}$	=	N <sub>2</sub> O emission factor for nitric acid plants that have used AM0028 or AM0034 in the first crediting period in year y (kg N <sub>2</sub> O/t HNO <sub>3</sub> )
$EF_{historical}$	=	Historical baseline emission factor of the nitric acid plant (kg N <sub>2</sub> O/t HNO <sub>3</sub> )
$EF_{default,y}$	=	Default emission factor according to the operating pressure of the ammonia burner in year y (kg N <sub>2</sub> O/t HNO <sub>3</sub> )

The values for the present period are:

<b>EF<sub>existing,y,II</sub></b>	<b>EF<sub>historical,II</sub></b>	<b>EF<sub>default,y,II</sub> (high pressure)</b>
kgN <sub>2</sub> O / tHNO <sub>3</sub>	kgN <sub>2</sub> O / tHNO <sub>3</sub>	kgN <sub>2</sub> O / tHNO <sub>3</sub>
11.00	12.09	11.00
<b>EF<sub>existing,y,III</sub></b>	<b>EF<sub>historical,III</sub></b>	<b>EF<sub>default,y,III</sub> (high pressure)</b>
kgN <sub>2</sub> O / tHNO <sub>3</sub>	kgN <sub>2</sub> O / tHNO <sub>3</sub>	kgN <sub>2</sub> O / tHNO <sub>3</sub>
11.00	11.26	11.00
<b>EF<sub>existing,y,IV</sub></b>	<b>EF<sub>historical,IV</sub></b>	<b>EF<sub>default,y,IV</sub> (medium pressure)</b>
kgN <sub>2</sub> O / tHNO <sub>3</sub>	kgN <sub>2</sub> O / tHNO <sub>3</sub>	kgN <sub>2</sub> O / tHNO <sub>3</sub>
5.70	5.70	6.80

## E.2. Calculation of project emissions or actual net removals

>>

Overall project emissions for the project activity are calculated as sum over the separately determined, plant specific project emissions, as per following equation:

$$PE_y = PE_{y,II} + PE_{y,III} + PE_{y,IV}$$

Where:

$PE_y$	=	Project emissions in year y (t CO <sub>2</sub> e)
$PE_{y,II}$	=	Project emissions of plant Hu-Chems II in year y (t CO <sub>2</sub> e)
$PE_{y,III}$	=	Project emissions of plant Hu-Chems III in year y (t CO <sub>2</sub> e)



$PE_{y,IV}$  = Project emissions of plant Hu-Chems IV in year  $y$  (t CO<sub>2</sub>e)

The values for the present period are:

$PE_y$	$PE_{y,II}$	$PE_{y,III}$	$PE_{y,IV}$
tCO <sub>2</sub> e	tCO <sub>2</sub> e	tCO <sub>2</sub> e	tCO <sub>2</sub> e
<b>31,267</b>	4,257	4,053	22,957

Plant specific project emissions are calculated separately for each NA plant as per the PDD, using the same set of several equations for each plant as shown below, unless described otherwise.

$$PE_y = PE_{N_2O,y} + PE_{CO_2,tertiary,y}$$

Where:

$PE_y$  = Project emissions in year  $y$  (t CO<sub>2</sub>e)

$PE_{N_2O,y}$  = Project emissions of N<sub>2</sub>O from the project plant in year  $y$  (t CO<sub>2</sub>e)

$PE_{CO_2,tertiary,y}$  = Project emissions of CO<sub>2</sub> from the operation of the tertiary N<sub>2</sub>O abatement facility in year  $y$  (t CO<sub>2</sub>)

The values for the present period are:

$PE_{y,II}$	$PE_{N_2O,y,II}$	$PE_{CO_2,tertiary,y,II}$
t CO <sub>2</sub> e	t CO <sub>2</sub> e	t CO <sub>2</sub> e
<b>4,257</b>	3,883	374
$PE_{y,III}$	$PE_{N_2O,y,III}$	$PE_{CO_2,tertiary,y,III}$
t CO <sub>2</sub> e	t CO <sub>2</sub> e	t CO <sub>2</sub> e
<b>4,053</b>	3,769	284
$PE_{y,IV}$	$PE_{N_2O,y,IV}$	$PE_{CO_2,tertiary,y,IV}$
t CO <sub>2</sub> e	t CO <sub>2</sub> e	t CO <sub>2</sub> e
<b>22,957</b>	22,957	0

The project emissions of N<sub>2</sub>O from the project plant ( $PE_{N_2O,y}$ ) are the emissions from the N<sub>2</sub>O contained in the tail gas stream of the plant, which is released to the atmosphere. Accordingly, the plant specific  $PE_{N_2O,y}$  are determined as follows:

$$PE_{N_2O,y} = \sum_{h=1}^{h_y - h_{r,y}} F_{N_2O,tail\ gas,h} \times GWP_{N_2O} \times 10^{-3}$$

Where:

$PE_{N_2O,y}$  = Project emissions of N<sub>2</sub>O from the project plant in year  $y$  (t CO<sub>2</sub>e)

$GWP_{N_2O}$  = Global warming potential of N<sub>2</sub>O valid for the commitment period

$F_{N_2O,tail\ gas,h}$  = Mass flow of N<sub>2</sub>O in the gaseous stream of the tail gas in the hour  $h$  (kg N<sub>2</sub>O/h)

$h_y$  = Number of hours in year  $y$  during which the plant was in operation ( $h$ )

$h_{r,y}$  = Number of hours ( $h$ ) in year  $y$  where:

- For secondary N<sub>2</sub>O abatement: the abatement system was not installed, underperforming or failed;
- For tertiary N<sub>2</sub>O abatement: the abatement system is by-passed, underperforming or failed

The values for the present period are:

$PE_{N_2O,y,II}^*)$	$F_{N_2O,tail\ gas,h,II}$	$h_{y,II}$	$h_{r,y,II}$	$GWP_{N_2O}^{**})$
tCO <sub>2</sub> e	kgN <sub>2</sub> O	h	h	tCO <sub>2</sub> / tN <sub>2</sub> O
<b>3,883</b>	14,650	2,788	19	265
$PE_{N_2O,y,III}^*)$	$F_{N_2O,tail\ gas,h,III}$	$h_{y,III}$	$h_{r,y,III}$	$GWP_{N_2O}^{**})$
tCO <sub>2</sub> e	kgN <sub>2</sub> O	h	h	tCO <sub>2</sub> / tN <sub>2</sub> O
<b>3,769</b>	14,220	2,898	22	265
$PE_{N_2O,y,IV}^*)$	$F_{N_2O,tail\ gas,h,IV}$	$h_{y,IV}$	$h_{r,y,IV}$	$GWP_{N_2O}^{**})$
tCO <sub>2</sub> e	kgN <sub>2</sub> O	h	h	tCO <sub>2</sub> / tN <sub>2</sub> O
<b>22,957</b>	86,629	2,886	5	265

\*) Values are conservatively rounded down.

\*\*) Acc. to "Clarification: Regulatory requirements under temporary measures for post-2020 cases" (CDM-EB109-A01-CLAR)

The amount of N<sub>2</sub>O emissions from the tail gas stream of the plant (=  $F_{N_2O,tailgas,h}$ ) is determined by using the "Tool to determine the mass flow of a greenhouse gas in a gaseous stream" and hence the following provisions apply:

- Throughout the crediting periods of the project activity, the N<sub>2</sub>O concentration and volume or mass flow of the tail gas are to be monitored continuously. The monitoring system is to be installed and maintained throughout the crediting period based on the European Norm 14181 or any more recent update of that standard;
- The monitoring system should provide separate hourly average values for the N<sub>2</sub>O concentration and the volume or mass flow of the tail gas based on two seconds (or shorter) interval readings that are recorded and stored electronically. These N<sub>2</sub>O data sets shall be identified by means of a unique time/date key indicating when exactly the values were observed;
- The correction factors derived from the calibration curve of the QAL2 audit for the monitoring components as determined during the QAL2-test in accordance with EN14181 must be applied to both the N<sub>2</sub>O concentration and the volume or mass flow of the tail gas. This can either be applied automatically to the raw data recorded by the data storage system at the plant or it can be applied to the calculated hourly averages as part of the calculation of project emissions;
- If data for either the N<sub>2</sub>O concentration or the volume or mass flow of the tail gas are not available for more than 1/3 of any hour while the plant was in operation, the value for that hour shall be replaced with the maximum value of N<sub>2</sub>O concentration or volume or mass flow of the tail gas observed during the monitoring period. If data for neither the N<sub>2</sub>O concentration nor the volume or mass flow of the tail gas are available for more than 1/3 of any hour while the plant was in operation, the maximum value of mass flow of N<sub>2</sub>O calculated during the monitoring period shall be applied to any such hour. Values observed during five operating hours before and after a plant start-up and shutdown shall not be used for the determination of the maximum values;
- In the case that the N<sub>2</sub>O concentration and the volume or mass flow of the tail gas and by-pass are automatically converted to normal conditions by the AMS during the monitoring process, the parameters  $P_t$  and  $T_t$  do not need to be monitored except, if applicable, for the purpose of determining the moisture content in the gaseous stream.

As described in the PDD according to the applied tool the mass flow of greenhouse gas  $i$  in the gaseous stream in time interval  $t$  ( $F_{i,t}$ ) is calculated based on measurements of

- the total volume flow or mass flow of the gas stream; and
- the volumetric fraction of the gas in the gaseous stream; and
- the gas composition and water content.

The flow and volumetric fraction may be measured on a dry basis or wet basis. The tool covers the possible measurement combinations, providing six different calculation options to determine the mass flow of a particular greenhouse gas (option A to F). As stated in the PDD, the option chosen for this project activity is option A, which requires demonstrating that the gaseous stream is dry, whereas the tool suggests two options to do this:

- Measure the moisture content of the gaseous stream ( $C_{H_2O,t,db,n}$ ) and demonstrate that this is less or equal to 0.05 kg H<sub>2</sub>O/m<sup>3</sup> dry gas; or
- Demonstrate that the temperature of the gaseous stream ( $T_t$ ) is less than 60°C (333.15 K) at the flow measurement point.

The measured values of all plants relevant to this monitoring period are below the maximum threshold value of 0.05 kg H<sub>2</sub>O/m<sup>3</sup> dry gas. Therefore, Option A of the tool (measurement options: volume flow of gaseous stream on dry basis, volumetric fraction on dry or wet basis) is applied. Hence, the mass flow of greenhouse gas  $i$  ( $F_{i,t}$ )<sup>5</sup> is determined as follows:

$$F_{i,t} = V_{t,db} \times v_{i,t,db} \times \rho_{i,t}$$

With

$$\rho_{i,t} = \frac{P_t \times MM_i}{R_u \times T_t}$$

Where:

$F_{i,t}$	=	Mass flow of greenhouse gas $i$ in the gaseous stream in time interval $t$ (kg gas/h)
$V_{t,db}$	=	Volumetric flow of the gaseous stream in time interval $t$ on a dry basis (m <sup>3</sup> dry gas/h)
$v_{i,t,db}$	=	Volumetric fraction of greenhouse gas $i$ in the gaseous stream in a time interval $t$ on a dry basis (m <sup>3</sup> gas $i$ /m <sup>3</sup> dry gas)
$\rho_{i,t}$	=	Density of greenhouse gas $i$ in the gaseous stream in time interval $t$ (kg gas $i$ /m <sup>3</sup> gas $i$ )
$P_t$	=	Absolute pressure of the gaseous stream in time interval $t$ (Pa)
$MM_i$	=	Molecular mass of greenhouse gas $i$ (kg/kmol)
$R_u$	=	Universal ideal gases constant (Pa.m <sup>3</sup> /kmol.K)
$T_t$	=	Temperature of the gaseous stream in time interval $t$ (K)

When applying normal conditions and as described in the PDD, the density at normal conditions ( $P_t = P_n = 101,325$  Pa;  $T_t = T_n = 273.15$  K) was determined to be constantly 1.96 kg/m<sup>3</sup> <sup>6</sup>. Respective parameters need not to be monitored according to the applied methodology.

For calculation of  $F_{N_2O,tailgas,h}$ , as well as application of calibration curves or corrections to data in case of observations & events (as described in section B.1.) on an hourly basis, please refer to the excel books, which are attached to this MR.

The project emissions from the operation of the tertiary N<sub>2</sub>O abatement facility ( $PE_{CO_2,tertiary,y}$ ) only need to be considered, if a tertiary N<sub>2</sub>O abatement facility is installed under the project activity and if fossil fuels are used to operate the facility or re-heat the gas after the facility. Specifically, to this project activity, this situation applies to NA plants Hu-Chems II and III, where propane (supplied as LPG) is used as reducing agent in the tertiary N<sub>2</sub>O abatement facilities. No fossil fuel is used in NA plant Hu-Chems IV. Hence, the following set of equations is applied exclusively for NA plants Hu-Chems II and III, whereas the value for NA plant Hu-Chems IV is set to zero due to inapplicability of this emission source (associated parameters are not monitored accordingly).

<sup>5</sup>  $F_{i,t}$  corresponds to the parameter  $F_{N_2O,tail gas,h}$  of the applied methodology ACM0019.

<sup>6</sup>  $\rho_{i,t} = (P_n \times MM_i) / (T_n \times R_u) = 1.96$  kg/m<sup>3</sup>

$$PE_{CO2,tertiary,y} = PE_{FF,y}$$

Where:

- $PE_{CO2,tertiary,y}$  = Project emissions of CO<sub>2</sub> from the operation of the tertiary N<sub>2</sub>O abatement facility in year y (t CO<sub>2</sub>)
- $PE_{FF,y}$  = Project emissions related to fossil fuel input to the destruction facility and/or re-heater in year y (t CO<sub>2</sub>)

For determination of  $PE_{FF,y}$ , the “Tool to calculate project or leakage CO<sub>2</sub> emissions from fossil fuel combustion” shall be used to calculate the project emissions related to fossil fuels used in year y. Specific guidance on the use of the tool are:

- The parameter  $PE_{FC,j,y}$  used in the “Tool to calculate project or leakage CO<sub>2</sub> emissions from fossil fuel combustion” corresponds to the parameter  $PE_{FF,y}$  in the applied methodology, and
- The element process  $j$  in the tool corresponds to the consumption of fossil fuels for the operation of the tertiary N<sub>2</sub>O abatement facility and/or the re-heating of the tail gas.

The values for the present period are:

$PE_{CO2,tertiary,y,II} = PE_{FF,y,II} = PE_{FC,j,y,II}$
tCO <sub>2</sub> /yr
374
$PE_{CO2,tertiary,y,III} = PE_{FF,y,III} = PE_{FC,j,y,III}$
tCO <sub>2</sub> /yr
284

Acc. to the applied tool CO<sub>2</sub> emissions from fossil fuel combustion in process  $j$  are based on the quantity of fuels combusted and the CO<sub>2</sub> emission coefficient of those fuels, as follows:

$$PE_{FC,j,y} = \sum_i FC_{i,j,y} \times COEF_{i,y}$$

Where:

- $PE_{FC,j,y}$  = Are the CO<sub>2</sub> emissions from fossil fuel combustion in process  $j$  during the year  $y$  (tCO<sub>2</sub>/yr)
- $FC_{i,j,y}$  = Is the quantity of fuel type  $i$  combusted in process  $j$  during the year  $y$  (t/yr)
- $COEF_{i,y}$  = Is the CO<sub>2</sub> emission coefficient of fuel type  $i$  in year  $y$  (tCO<sub>2</sub>/t)
- $i$  = Are the fuel types combusted in process  $j$  during the year  $y$

Option A of the “Tool to calculate project or leakage CO<sub>2</sub> emissions from fossil fuel combustion” is applied as the chemical composition of the used fossil fuel (i.e. LPG) is provided by the fuel supplier. According to this option A the CO<sub>2</sub> emission coefficient  $COEF_{i,y}$  is calculated based on the chemical composition of the fossil fuel type  $i$ , using the following approach:

$$COEF_{i,y} = w_{C,i,y} \times 44/12$$

$FC_{i,j,y}$  is measured in a mass unit

Where:

- $COEF_{i,y}$  = Is the CO<sub>2</sub> emission coefficient of fuel type  $i$  (t CO<sub>2</sub>/t)
- $w_{C,i,y}$  = Is the weighted average mass fraction of carbon in fuel type  $i$  in year  $y$  (t C/t)
- $i$  = Are the fuel types combusted in process  $j$  during the year  $y$

The values for the present period are:

$PE_{CO2,tertiary,y,II}$	$FC_{i,j,y,II}$	$COEF_{i,y,II}$
tCO <sub>2</sub> /yr	t/yr	tCO <sub>2</sub> /t
374	124.49	3.00

$PE_{CO_2, \text{tertiary}, y, III}$	$FC_{i, j, y, III}$	$COEF_{i, y, III}$
tCO <sub>2</sub> /yr	t/yr	tCO <sub>2</sub> /t
284	94.55	3.00

### E.3. Calculation of leakage emissions

&gt;&gt;

Acc. to the applied methodology any leakage emissions sources are deemed to be negligible.

### E.4. Calculation of emission reductions or net anthropogenic removals

	Baseline GHG emissions or baseline net GHG removals (t CO <sub>2</sub> e)	Project GHG emissions or actual net GHG removals (t CO <sub>2</sub> e)	Leakage GHG emissions (t CO <sub>2</sub> e)	GHG emission reductions or net anthropogenic GHG removals (t CO <sub>2</sub> e)			
				Before 01/01/2013	From 01/01/2013 until 31/12/2020	From 01/01/2021	Total amount
<b>Total</b>	435,391	31,267	0	N/A	N/A	404,124	404,124

\*) Note that actual calculation of ERs as presented in chapters E.1 to E.4 were done in the excel book. Rounding in chapters E.1 to E.4 was just done for ease of presentation. Please note that conservative rounding was made for final ER calculation only. This can be traced in the excel book attached to this MR.

### E.5. Comparison of emission reductions or net anthropogenic removals achieved with estimates in the registered PDD

Amount achieved during this monitoring period (t CO <sub>2</sub> e)	Amount estimated ex ante for this monitoring period in the PDD (t CO <sub>2</sub> e)
404,124	437,610

#### E.5.1. Explanation of calculation of “amount estimated ex ante for this monitoring period in the PDD”

&gt;&gt;

The following data were applied for the ex-ante calculation of ERs of NA plant 2:

- Nameplate capacity: 116,800 MTPA HNO<sub>3</sub>
- Yearly operation: 355 days
- Estimated yearly nitric acid production: 102,000 tHNO<sub>3</sub>/a;
- Estimated tail gas flow rate: 46,300 m<sup>3</sup> dry gas/h;
- N<sub>2</sub>O outlet concentration of tail gas flow:  $9.10 \cdot 10^{-5}$  m<sup>3</sup> N<sub>2</sub>O/m<sup>3</sup> dry gas;
- Fossil fuels: 380 t/y.

For NA plant 2 the PDD states estimated ERs of 108,672 tCO<sub>2</sub>e for 128 days in 2021.

The following data were applied for the ex-ante calculation of ERs of NA plant 3:

- Nameplate capacity: 116,800 MTPA HNO<sub>3</sub>
- Yearly operation: 349 days
- Estimated yearly nitric acid production: 99,000 tHNO<sub>3</sub>/a;
- Estimated tail gas flow rate: 46,500 m<sup>3</sup> dry gas/h;
- N<sub>2</sub>O outlet concentration of tail gas flow:  $9.60 \cdot 10^{-5}$  m<sup>3</sup> N<sub>2</sub>O/m<sup>3</sup> dry gas;
- Fossil fuels: 380 t/y.

For NA plant 3 the PDD states estimated ERs of 104,615 tCO<sub>2</sub>e for 128 days in 2021.

The following data were applied for the ex-ante calculation of ERs of NA plant 4:

- Nameplate capacity: 467,200 MTPA HNO<sub>3</sub>
- Yearly operation: 349 days
- Estimated yearly nitric acid production: 410,000 tHNO<sub>3</sub>/a;
- Estimated tail gas flow rate: 180,000 m<sup>3</sup> dry gas/h;
- N<sub>2</sub>O outlet concentration of tail gas flow:  $6.35 \times 10^{-5}$  m<sup>3</sup> N<sub>2</sub>O / m<sup>3</sup> dry gas;

For NA plant 4 the PDD states estimated ERs of 224,323 tCO<sub>2</sub>e for 128 days in 2021.

#### E.6. Remarks on increase in achieved emission reductions

>>

Actual ERs achieved during this monitoring period are below the ex-ante ERs estimated in the registered PDD. Please find below the assessment for each plant:

Comparison of ER with PDD values: Hu-Chems II	
Corresponding PDD estimation for this monitoring period (rounded)	108,672 tCO <sub>2</sub> e
Actual calculation of emission reduction in this monitoring period	99,318 tCO <sub>2</sub> e

Actual ERs in plant Hu-Chems II are below the ex-ante PDD estimation.

Comparison of ER with PDD values: Hu-Chems III	
Corresponding PDD estimation for this monitoring period (rounded)	104,615 tCO <sub>2</sub> e
Actual calculation of emission reduction in this monitoring period	102,799 tCO <sub>2</sub> e

Actual ERs in plant Hu-Chems III are below the ex-ante PDD estimation.

Comparison of ER with PDD values: Hu-Chems IV	
Corresponding PDD estimation for this monitoring period (rounded)	224,323 tCO <sub>2</sub> e
Actual calculation of emission reduction in this monitoring period	202,007 tCO <sub>2</sub> e

Actual ERs in plant Hu-Chems IV are below the ex-ante PDD estimation.

#### E.7. Remarks on scale of small-scale project activity

>>

N/A

## Appendix 1. Social Fund

As described in the PDD a Social Fund was established by the PP. This fund contributes to the social benefit of the people living in the area of the project activity by financing projects and social activities. Payments from the CDM project to the Social Fund in year 2020 were 1,455,088,000 WON (~ 1,081,020 EUR).

## Appendix 2. Excel book for claiming Emission Reductions

Excel books containing monitored data and calculations of ERs were submitted to the DOE:

- 0765\_II\_MP52\_ER calc\_v1.0\_CONFIDENTIAL.xlsx
- 0765\_III\_MP52\_ER calc\_v1.0\_CONFIDENTIAL.xlsx
- 0765\_IV\_MP52\_ER calc\_v1.0\_CONFIDENTIAL.xlsx
- 0765\_ALL\_MP52\_ER calc\_v1.0\_CONFIDENTIAL.xlsx

- - - - -

### Document information

<i>Version</i>	<i>Date</i>	<i>Description</i>
09.0	8 October 2021	Revision to: <ul style="list-style-type: none"> <li>• Ensure consistency with version 03.0 of the “CDM project standard for project activities” (CDM-EB93-A04-STAN).</li> </ul>
08.0	6 April 2021	Revision to: <ul style="list-style-type: none"> <li>• Reflect the “Clarification: Regulatory requirements under temporary measures for post-2020 cases” (CDM-EB109-A01-CLAR).</li> </ul>
07.0	31 May 2019	Revision to: <ul style="list-style-type: none"> <li>• Ensure consistency with version 02.0 of the “CDM project standard for project activities” (CDM-EB93-A04-STAN);</li> <li>• Add a section on remarks on the observance of the scale limit of small-scale project activity during the crediting period;</li> <li>• Add "changes specific to afforestation or reforestation project activity" as a possible post-registration changes;</li> <li>• Clarify the reporting of net anthropogenic GHG removals for A/R project activities between two commitment periods;</li> <li>• Make editorial improvements.</li> </ul>
06.0	7 June 2017	Revision to: <ul style="list-style-type: none"> <li>• Ensure consistency with version 01.0 of the “CDM project standard for project activities” (CDM-EB93-A04-STAN);</li> <li>• Make editorial improvements.</li> </ul>
05.1	4 May 2015	Editorial revision to correct version numbering.

<i>Version</i>	<i>Date</i>	<i>Description</i>
05.0	1 April 2015	Revisions to: <ul style="list-style-type: none"> <li>• Include provisions related to delayed submission of a monitoring plan;</li> <li>• Provisions related to the Host Party;</li> <li>• Remove reference to programme of activities;</li> <li>• Overall editorial improvement.</li> </ul>
04.0	25 June 2014	Revisions to: <ul style="list-style-type: none"> <li>• Include the Attachment: Instructions for filling out the monitoring report form (these instructions supersede the "Guideline: Completing the monitoring report form" (Version 04.0));</li> <li>• Include provisions related to standardized baselines;</li> <li>• Add contact information on a responsible person(s)/ entity(ies) for completing the CDM-MR-FORM in A.6 and Appendix 1;</li> <li>• Change the reference number from <i>F-CDM-MR</i> to <i>CDM-MR-FORM</i>;</li> <li>• Editorial improvement.</li> </ul>
03.2	5 November 2013	Editorial revision to correct table in page 1.
03.1	2 January 2013	Editorial revision to correct table in section E.5.
03.0	3 December 2012	Revision required to introduce a provision on reporting actual emission reductions or net GHG removals by sinks for the period up to 31 December 2012 and the period from 1 January 2013 onwards (EB 70, Annex 11).
02.0	13 March 2012	Revision required to ensure consistency with the "Guidelines for completing the monitoring report form" (EB 66, Annex 20).
01.0	28 May 2010	EB 54, Annex 34. Initial adoption.
Decision Class: Regulatory Document Type: Form Business Function: Issuance Keywords: monitoring report		