 <p style="text-align: center;">Monitoring report form for CDM project activity (Version 08.0)</p>			
Complete this form in accordance with the instructions attached at the end of this form.			
MONITORING REPORT			
Title of the project activity	Wayang Windu Phase 2 Geothermal Power Project		
UNFCCC reference number of the project activity	3193		
Version number of the PDD applicable to this monitoring report	11.0		
Version number of this monitoring report	01		
Completion date of this monitoring report	01/10/2021		
Monitoring period number	7		
Duration of this monitoring period	02/12/2017 – 30/06/2021 (first and last days included)		
Monitoring report number for this monitoring period			
Project participants	Star Energy Geothermal (Wayang Windu) Ltd Sindicatum Carbon Capital Ltd		
Host Party	Republic of Indonesia		
Applied methodologies and standardized baselines	ACM0002 - Grid-connected electricity generation from renewable sources, version 19.0		
Sectoral scopes	Sectoral scope: 1 - Energy industries (renewable/nonrenewable sources)		
Amount of GHG emission reductions or net anthropogenic GHG removals achieved by the project activity in this monitoring period	Amount achieved before 1 January 2013	Amount achieved from 1 January 2013 until 31 December 2020	Amount achieved from 1 January 2021
	N/A	2,529,102	405,870
Amount of GHG emission reductions or net anthropogenic GHG removals estimated ex ante for this monitoring period in the PDD	2,660,668 tCO ₂ e		

SECTION A. Description of project activity

A.1. General description of project activity

>>>

The purpose of the project activity is the generation of power using a reliable and renewable resource in place of power generation by a more greenhouse gas intensive fuel/source. The project reduces greenhouse gas emissions through the displacement of fossil fuel electricity generation with a clean, renewable energy source.

The project activity, Wayang Windu Phase 2 Geothermal Power Project, involves the installation of the additional main 117 MW steam turbine and peripheral equipment to enable the turbine to be driven by the steam produced by the Wayang Windu geothermal fields. The turbine is connected to a generator which would produce the electricity to the JAMALI grid, and hence adding the electricity capacity of the existing Wayang Windu Phase 1.

Wayang Windu Phase 1 has been producing power since June 2000, supplying 110 MW of electricity into the national grid through a single buyer, PLN.

The baseline scenario for this project is the generation of electricity by the operation of grid connected power plants and by the addition of new generation sources. In the absence of the project activity electricity will continue to be generated by the existing generation units in the JAMALI grid.

The date when the EPC contract was signed was considered as the starting date of the project activity, i.e. on 30/01/2007. Project constructions start date is 30/01/2007 and the commercial operation of the project started from 04/03/2009 and has been continually operating since that date, apart from shutdowns or scheduled maintenance. The project activity is currently in the operational phase and has been registered with the United Nations Framework Convention on Climate Change (UNFCCC) as a CDM project activity (Reference No. 3193) on 02/12/2010 with six monitoring periods from 02/12/2010 to 1/12/2017 verified before this current monitoring period. The details can be viewed on <http://cdm.unfccc.int/Projects/DB/TUEV-SUED1260194062.48/view>

The total emission reductions achieved in this monitoring period is 2,934,972.

A.2. Location of project activity

>>

Wayang Windu Geothermal Power Plant is located in Pangalengan approximately 40 km south of Bandung, West Java in Indonesia. 7° 12' 26.79" S, 107° 37' 44.12" E Figure 1 Location of Bandung



Figure 1 Location of Bandung



Figure 2 Location of Wayang Windu

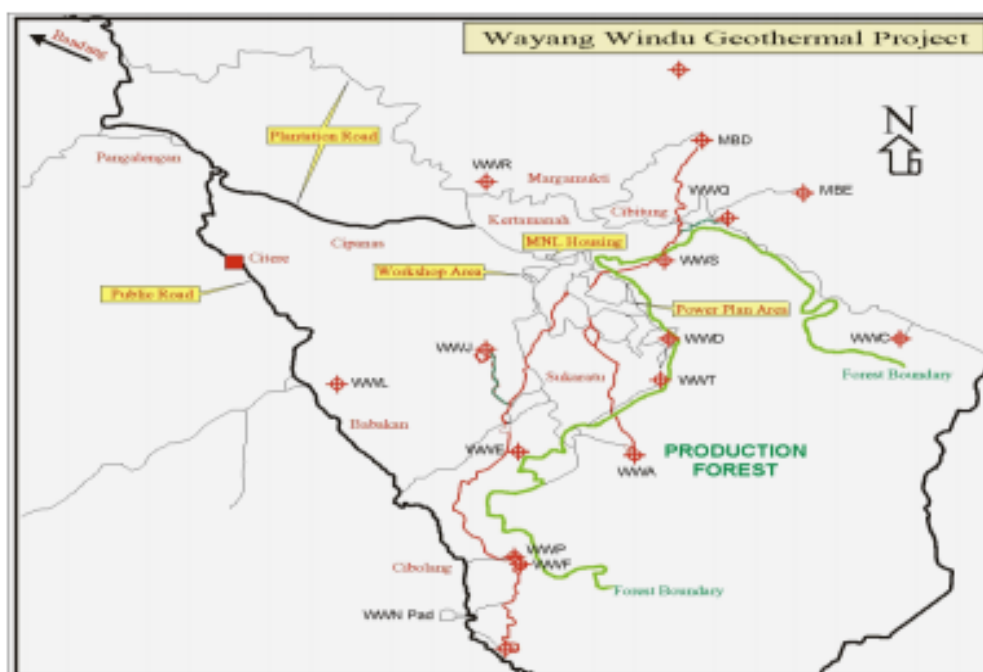


Figure 3 Location of the Wayang Windu Wells and Plant

A.3. Parties and project participants

Parties involved	Project participants	Indicate if the Party involved wishes to be considered as project participant (Yes/No)
Republic of Indonesia (host)	Private entity Star Energy Geothermal (Wayang Windu) Ltd (MNL)	No
United Kingdom of Great Britain and Northern Ireland	Private entity Sindicatum Carbon Capital Ltd	No

A.4. References to applied methodologies and standardized baselines

≥ ≥

The applied methodology: ACM0002 “Large-scale Consolidated Methodology for Grid-connected electricity generation from renewable sources” (version 19)

This methodology also uses the build margin (BM) and operating margin (OM) approach as specified in:

- "Tool to calculate the emission factor for an electricity system" (Version 07.0) and also refers to the "Assessment of the validity of the original/current baseline and update of the baseline at the renewal of the crediting period" (Version 03.0.1)
- "Tool for the demonstration of additionality" (Version 5.2),
- "Tool to calculate project or leakage CO2 emissions from fossil fuel combustion" (Version 03.0)

More information can be found on the UNFCCC CDM website:

(<http://cdm.unfccc.int/methodologies/DB/UB3431UT9I5KN2MUL2FGZXZ6CV71LT>)

A.5. Crediting period type and duration

>>

A renewable 7-year crediting period was chosen for the project activity.

The 1st crediting period was from 02/12/2010 to 01/12/2017 both dates inclusive

The 2nd crediting period is from 02/12/2017 to 01/12/2024 both dates inclusive.

SECTION B. Implementation of project activity

B.1. Description of implemented project activity

>>

Geothermal energy in Wayang Windu is stored in a steam reservoir within the earth's crust. Dry saturated steam at high pressure is produced at the surface from wells drilled into this reservoir. The steam is delivered to the power generation facilities through a steam gathering system, to move the turbine blades and drive a generator hence generating electricity. Exhaust steam from the turbine is condensed in a direct contact condenser and part of the condensed exhaust steam is re-injected into the geothermal reservoir, with the remaining being evaporated in the cooling towers. The electricity produced, is transferred by the load dispatcher at the adjacent power switchyard to the transmission lines located outside the power plant.

The power plant consists of a conventional geothermal condensing steam turbine generator with a capacity of 117 MW. Energy of condensation will be transferred to the circulating cooling water system in the steam exhaust condenser and will subsequently be rejected to atmosphere in a conventional mechanical draught cooling tower. The commercial operation of Wayang Windu Phase 2 Geothermal Power Project Plant started from 04/03/2009.

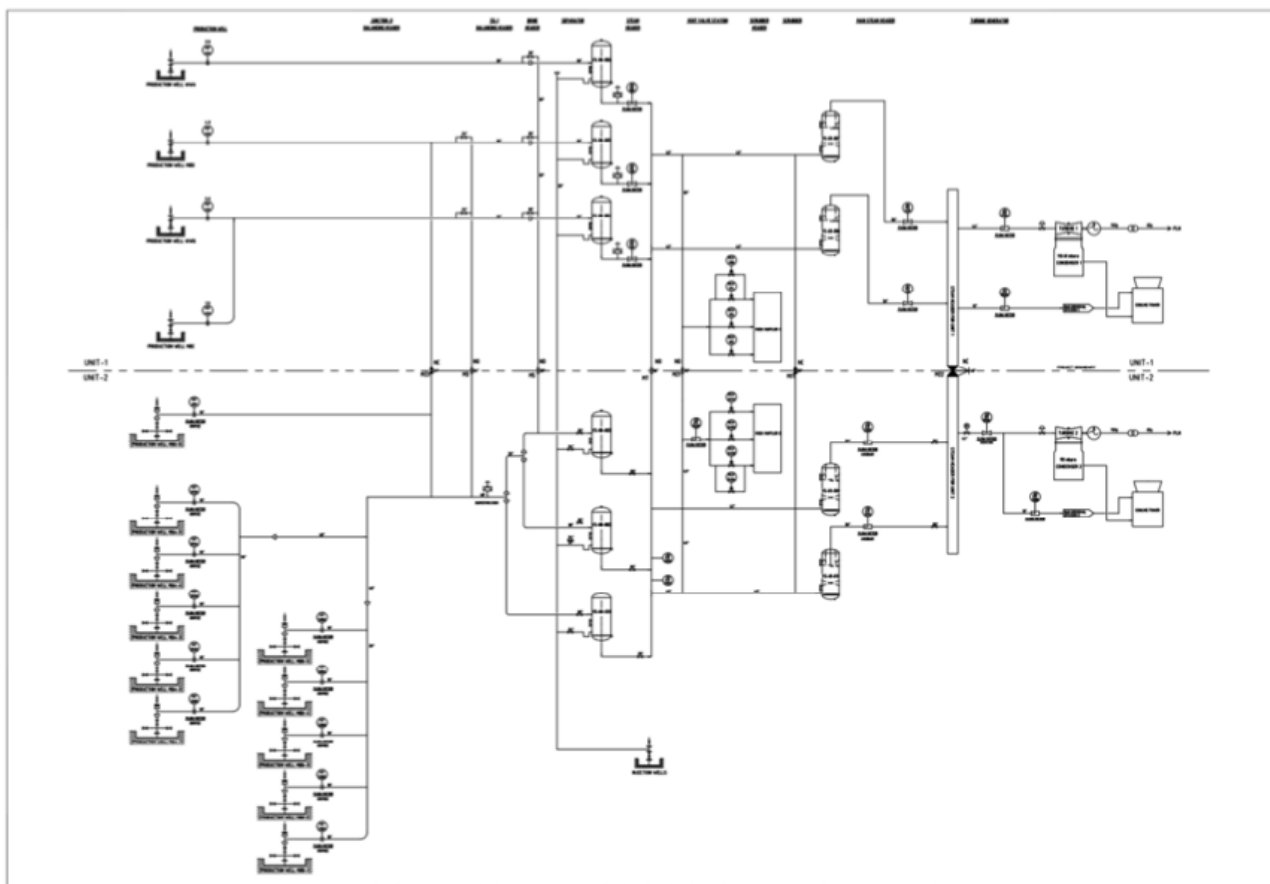


Figure 4 Diagram of the Technical Process (also see Figure 5)

Information on the main equipment:

Main equipment	Steam Turbine	Generator
Manufacturer	Fuji Electric Systems Co. Ltd	Fuji Electric Systems Co. Ltd
Type or model no.	Single Casing Condensing	GTLR1544/63-2
Serial number	K1B10159G1	K1B10159L1
Rated capacity or output	117.000 kW	137500 kVA
Rated voltage	-	13800 V
Rated Power Factor	-	0.85 Cos ϕ

During this monitoring period, planned and unplanned outages occurred to Wayang Windu Phase 1 and 2. Refer to Annex 1 for further details and refer to Annex 4 Monitoring Equipments for calibration activities during this monitoring period.

B.2. Post-registration changes

B.2.1. Temporary deviations from the registered monitoring plan, applied methodologies, standardized baselines or other methodological regulatory documents

>>

No temporary deviations from the registered monitoring plan or applied methodology have been applied for this monitoring period.

B.2.2. Corrections

>>

Not applicable.

B.2.3. Changes to the start date of the crediting period

>>

There have been no permanent changes from registered monitoring plan or applied methodology submitted or approved during this monitoring period with this monitoring report.

B.2.4. Inclusion of monitoring plan

>>

Not applicable

B.2.5. Permanent changes to the registered monitoring plan, or permanent deviation of monitoring from the applied methodologies, standardized baselines, or other methodological regulatory documents

>>

Not applicable

B.2.6. Changes to project design

>>

Not applicable

B.2.7. Changes specific to afforestation or reforestation project activity

>>

Not applicable

SECTION C. Description of monitoring system

>>

The location of measurement devices installed is presented in figures 5,6,7,8 below:

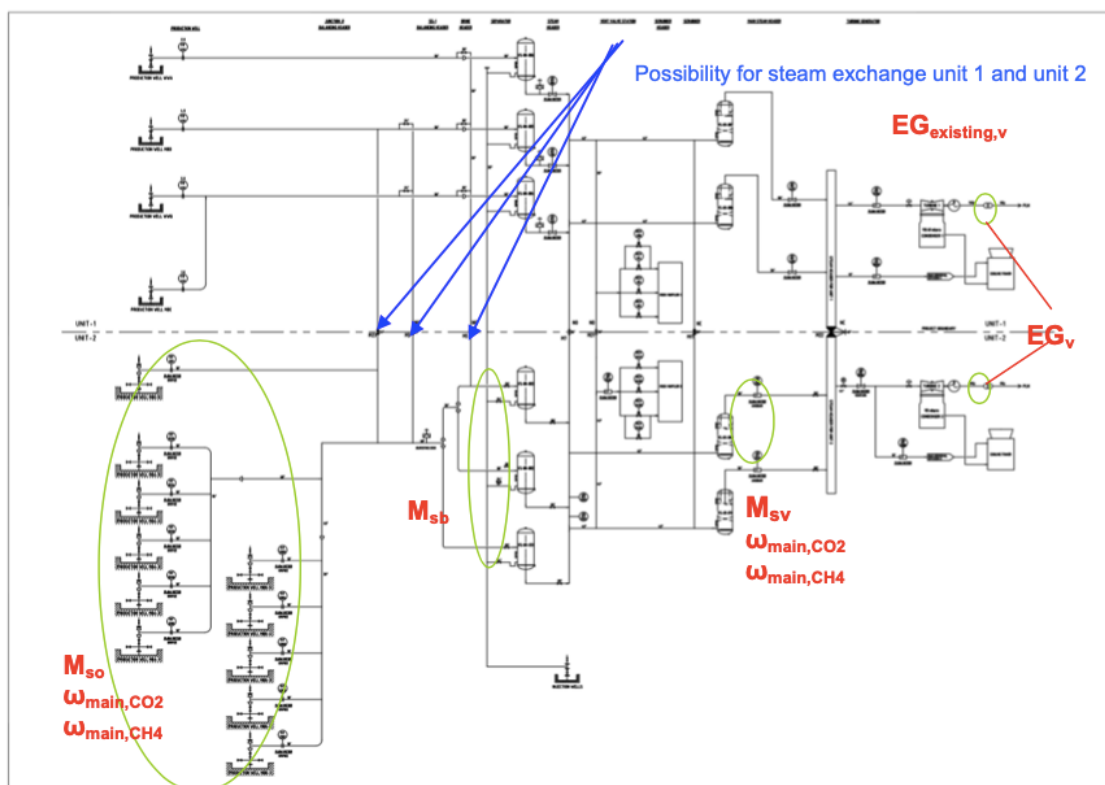


Figure 5 Simplified Process Flow Diagram for Monitoring



In order to guarantee the quality of the data and data collection system, a detailed monitoring manual has been developed and implemented. This quality manual or monitoring plan (available for verification by a designated operational entity (DOE)) is based upon the requirements set in the registered PDD and addresses as a minimum the items listed below.

Other operation and maintenance procedures developed for the project activity that are related to the monitoring system will be available during verification. Refer to Annex 2 for the list of the procedures.

An overview of the data collection process is provided in table 1 underneath. Detailed formulas for the calculation of emissions are presented in Section E below.

Table 1 Data Collection Process

Parameter	Reference	Procedure / Frequency	Registration	Check and correct primary measurements
Baseline Emissions	The baseline emissions are calculated using the formulae described in the PDD, section B6.1 - using the CDM spreadsheet	Primary data (weekly reports) are entered by the SCC officer in the CDM spreadsheet at the start of each month	CDM spreadsheet stored at SCC Project File SServer	The SCC project officer performs a consistency check based upon previous months. In case of irregularities data is double checked with SEG(WW)L and if needed corrected
Leakage	0			
Project Emissions	The project emissions are calculated using the formulae described in the PDD, section B6.1 - using the CDM spreadsheet	Primary data are entered by the SCC officer in the CDM spreadsheet at the start of each month	CDM spreadsheet stored at SCC Project File SServer	The SCC project officer performs a consistency check based upon previous months. In case of irregularities data is double checked with SEG(WW)L and if needed corrected
Emissions Reductions	The emission reductions are calculated using the formulae described in the PDD, section B6.1 - using the CDM spreadsheet	Primary data (weekly reports) are entered by the SCC officer in the CDM spreadsheet at start of each month	CDM spreadsheet stored at SCC Project File SServer	The SCC project officer performs a consistency check based upon previous months. In case of irregularities data is double checked with SEG(WW)L and if needed corrected

Calculation of emissions reduction

The data required to calculate baseline emissions and project emissions are fed into a protected spreadsheet which calculates the emission reductions according to the formulae described in section E. Access to the spreadsheet is controlled. The spreadsheet is regularly audited to ensure it is operating correctly.

Quality control Data

Data will be compared from month to month using trend analysis to show where parameters have deviated significantly from preceding or following values. Any values identified as being unusual in

this manner is rechecked. Where preceding or following values are not available, reference values may be taken from published data as appropriate such as 2006 IPCC guideline.

Accuracy and calibration of instruments

All meters purchased are maintained to ensure a high level of accuracy. The exact specifications of each meter were determined during the detailed design of the project. Thereafter the meter accuracies are included in this procedure and steps taken to maintain those levels of accuracy. The accuracy levels and procedures are set out in detail on monitoring manual.

All key meters are subjected to a quality control regime that includes regular maintenance and calibration. A record is maintained showing the location and unique identification number of each meter, the calibration status of that meter (when last calibrated, when next due for calibration) and who performs the calibration service. Calibration certificates are retained for all meters until two years after the end of the crediting period.

Archiving of data

The monitoring team periodically archives data to a secure and retrievable storage format on a periodic e.g. weekly basis. Calibration records are archived by scanning and storage in an accessible electronic format. These data are stored until 2 years after the end of the crediting period.

Document Control

The Project Manager implements a document control system that ensures that the current versions of necessary documents are available at the point of use. All documents are maintained in English (with local translations if necessary).

Preparation of monitoring report

The data is used to prepare a periodic monitoring report to be submitted to the CDM EB for verification and issuance of CERs. A standard format for the monitoring report is prepared. Prior to the submission of the first monitoring report, an internal technical review process was conducted and documented before the report was submitted for verification.

Manual data recording system

The monitoring team implements a manual data recording system to act as a back-up for the online system. This involves completion of a daily log sheet that records electricity meter readings at the start of the day (which is also the end of the previous day). Spot readings of other values (temperature and pressure) will also be recorded periodically and at the times when meter readings are taken. At least one set of manual readings will be taken directly from the meters each day, and used to check the read-outs in the control room.

These log sheets will act as a back-up and a means of estimating other essential data in the event of a prolonged failure of the on-line system (prolonged failure will constitute more than 24 hours (uninterrupted) without on-line monitoring).

Treatment of missing or corrupted data

Where data are corrupted or missing whilst the plant is operating, the missing data can be estimated by taking the lower of the average value for the parameter in question in the hour before the error arose or the hour immediately after the system came on-line again. If there is evidence to suggest that both of these values are un-representative, the average from the previous 24 hours will be used.

The error will be recorded in the daily log sheet and the occurrence of the error will be investigated and rectified as soon as possible. If the on-line system is compromised for more than 24 hours, data will be manually recorded.

Audit function and management review

The Project Manager arranges for an audit of the management system periodically and at least once per year. The auditor is not involved in the daily operation of the project and if necessary, may be

sourced from a third party. The auditor assesses the implementation of the monitoring procedure and the preparation of the monitoring report. Audit findings, and steps taken to address findings are recorded and reviewed by the management, which also reviews the effectiveness of these procedures and necessary changes implemented.

Organisation & Responsibilities

SEGWWL

- Wayang Windu Field Manager is responsible for supervision of overall plant operations and management responsibilities
- Production Superintendent is responsible for the preparation of monthly CDM report and supervision of plant productions
- EC&I Supervisor is responsible for maintaining the measurement devices and ensuring calibration of the measurement devices
- Senior Chemist is responsible for checking steam quality information for CDM and submission to SCC
- Chemist is responsible for steam sampling and analysis, checking and recording of steam quality
- Production Supervisor is responsible for external data collection, checking CDM information (excluding steam quality data) and weekly spreadsheet and submission to SCC
- Plant Operators are responsible for meter readings, data recording and other roles as specified by the supervisors

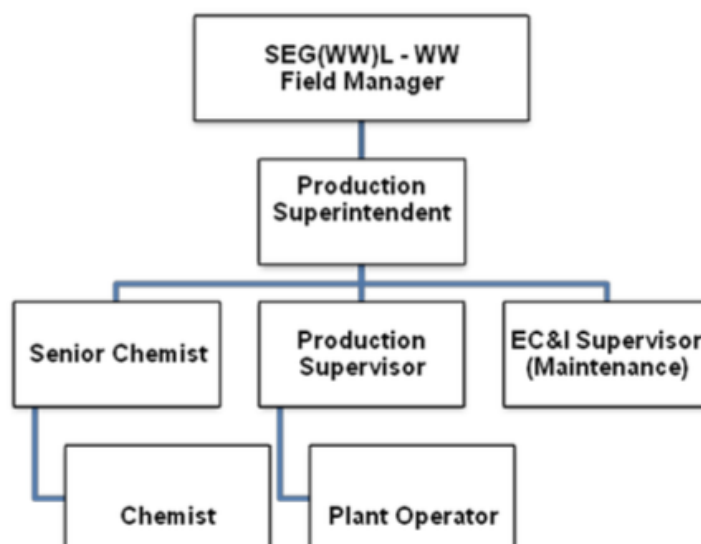


Figure 9 CDM Organization Structure SEGWWL

SCC

- Senior Climate Change Officer is responsible for the supervision of overall climate change monitoring of the project, initiate verification with DOE, and conducts internal audit on correct implementation MP
- Project Manager is responsible for management and checking of CDM information and reporting
- Project Officer is responsible for project coordination, implementation and liaison, data gathering and retention, completion of the CDM spreadsheet, calculation of emission reductions, preparation of monitoring report



Figure 10 CDM Organization Structure SCC

SECTION D. Data and parameters

D.1. Data and parameters fixed ex ante

(Copy this table for each data or parameter.)

Data/Parameter	GWP_{CH_4}
Unit	tCO ₂ /tCH ₄
Description	Global warming potential of methane valid for the relevant commitment period
Source of data	IPCC
Value(s) applied	For the second commitment period: 25 t CO ₂ e/t CH ₄
Choice of data or measurement methods and procedures	-
Purpose of data/parameter	Project emission calculations
Additional comments	-

Data/Parameter	$EG_{historical}$
Unit	MWh
Description	Average historical electricity delivered by the existing facility to the grid
Source of data	Project activity site
Value(s) applied	912,476
Choice of data or measurement methods and procedures	The average of historical electricity delivered by the existing facility (Wayang Windu Phase 1) to the grid, spanning all data from the most recent available month (Feb 2009) to the time at which the facility was operated (June 2000) expressed in MWh per year. Data is based on invoices from net electricity sales to the grid operator.
Purpose of data/parameter	Baseline emission calculations
Additional comments	-

Data/Parameter	$\sigma_{historical}$
Unit	MWh/yr
Description	Standard deviation of the annual average historical net electricity generation delivered to the grid by the existing renewable energy power plant that was operated at the project site prior to the implementation of the project activity

Source of data	Calculated from data used to establish $EG_{historical}$
Value(s) applied	5,952
Choice of data or measurement methods and procedures	Parameter to be calculated as the standard deviation of the annual generation data used to calculate $EG_{historical}$ for retrofit, or rehabilitation or replacement project activities
Purpose of data/parameter	Baseline emission calculation
Additional comments	

Data/Parameter	$DATE_{BaselineRetrofit}$
Unit	Date
Description	Point in time when the existing equipment would need to be replaced in the absence of the project activity
Source of data	Project activity site
Value(s) applied	01/06/2030
Choice of data or measurement methods and procedures	The technical lifetime of the existing facility, i.e. Wayang Windu Phase 1, in the absence of the project activity is taken to be 30 years. This is a conservative number, considering many of the power plants in Indonesia are operated even after its technical lifetime. Wayang Windu 1 started operation in June 2000, hence the $DATE_{BaselineRetrofit}$ is 01/06/2030.
Purpose of data/parameter	-
Additional comments	-

Data/Parameter	$DATE_{hist}$
Unit	date
Description	Point in time from which the time span of historical date for retrofit, rehabilitation or replacement project activities may start
Source of data	Project activity site
Value(s) applied	June 2000
Choice of data or measurement methods and procedures	$DATE_{hist}$ is the latest point in time between: The commercial commissioning of the plant/unit; If applicable: the last capacity addition to the plant/unit; or If applicable: the last retrofit or rehabilitation of the plant/unit
Purpose of data/parameter	-
Additional comments	-

Data/Parameter	The percentage share of total installed capacity of the specific technology
Unit	%
Description	The percentage share of total installed capacity of the specific technology in the total installed grid connected power generation capacity in the host country
Source of data	National statistics or other official data
Value(s) applied	1.49
Choice of data or measurement methods and procedures	-

Purpose of data/parameter	-
Additional comments	Based on figure from The Book of Electricity Statistics Number 29 - 2016 table 5 page 12 published by Directorate General of Electricity, Ministry of Energy and Mineral Resources

Data/Parameter	The total installed capacity of the technology
Unit	%
Description	The total installed capacity of the technology in the host country
Source of data	National statistics or other official data
Value(s) applied	2.58
Choice of data or measurement methods and procedures	-
Purpose of data/parameter	-
Additional comments	Based on figure from The Book of Electricity Statistics Number 29 - 2016 table 3 page 10 published by Directorate General of Electricity, Ministry of Energy and Mineral Resources

Data/Parameter	$EF_{grid,CM,y}$
Unit	tCO ₂ /MWh
Description	Grid emission factor for JAMALI
Source of data	Grid calculation published by Department of Energy and Mineral Resources of Indonesia - Directorate General of Electricity and Energy Utilization and endorsed by Indonesia DNA for year 2015, 2016, and 2017
Value(s) applied	0.945
Choice of data or measurement methods and procedures	Refer to the data published by Department of Energy & Mineral Resources of Indonesia – Directorate General of Electricity and Energy Utilization for the ex- ante figures for year 2015, 2016 and 2017. The weighted average OM, Build Margin and Combine Margin are calculated based on “tool to calculate the emission factor for an electricity system version 07.0”.
Purpose of data/parameter	Baseline emission calculations
Additional comments	Calculated once ex-ante at the start of the crediting period, using the most recent three historical years for which data is available at the time of submission of the CDM-PDD to the DOE for validation

D.2. Data and parameters monitored

(Copy this table for each data or parameter.)

Data/Parameter	$W_{steam,CO2,y}$
Unit	tCO ₂ /t steam
Description	Average mass fraction of CO ₂ in the produced steam in year y
Measured/calculated/default	Measured
Source of data	The mass fraction of CO ₂ in the produced steam at the production wells and at the steam field-power plant interface by the external laboratory.

Value(s) of monitored parameter	CO2 (tCO2 /t steam)	Wells	Main Steam
	19/12/2017	0.01160	0.00941
	12/03/2018	0.01001	0.00871
	09/07/2018	0.01052	0.00882
	10/10/2018	0.00986	0.00842
	07/12/2018	0.01029	0.00796
	08/03/2019	0.01118	0.00878
	25/06/2019	0.00932	0.00845
	18/09/2019	0.01198	0.00930
	20/12/2019	0.01144	0.00893
	11/03/2020	0.01250	0.00884
	20/11/2020	0.01049	0.01320
	28/12/2020	0.01143	0.00898
	26/03/2021	0.01071	0.00921
	28/06/2021	0.01125	0.00848
Monitoring equipment	The CO2 monitoring equipment consists of gas flasks, filled with sodium hydroxide solution and additional chemicals to prevent oxidation. The gas sampling is carried out using ASTM Standard Practice E1675 for Sampling 2- Phase Geothermal Fluid for Purposes of Chemical Analysis (as applicable to sampling single phase steam only). The analysis is carried out by an external laboratory accredited under ISO 17025 by the National Accreditation Committee (KAN - Komite Akreditasi Nasional).		
Measuring/reading/recording frequency	Sampling, analysis, and recording are performed every 3 months.		
Calculation method (if applicable)	N/A		
QA/QC procedures	Detailed procedures are described in the CDM Monitoring Manual		
Purpose of data/parameter	Project emission calculation		
Additional comments			

Data/Parameter	W_{steam,CH4,y}
Unit	tCH ₄ /t steam
Description	Average mass fraction of CH ₄ in the produced steam in year y
Measured/calculated/default	Measured
Source of data	The mass fraction of CH ₄ in the produced steam at the production wells and at the steam field-power plant interface by the external laboratory

Value(s) of monitored parameter	CH4 (tCH4 /t steam)	Wells	Main Steam
	19/12/2017	4.67E-06	3.15E-06
	12/03/2018	8.01E-04	1.95E-06
	09/07/2018	3.73E-06	6.05E-06
	10/10/2018	3.87E-06	6.60E-06
	07/12/2018	9.15E-06	6.15E-06
	08/03/2019	5.23E-06	3.45E-06
	25/06/2019	9.22E-06	2.50E-06
	18/09/2019	5.83E-06	5.10E-06
	20/12/2019	6.20E-06	1.87E-05
	11/03/2020	1.45E-05	4.05E-05
	20/11/2020	3.69E-05	6.80E-05
	28/12/2020	6.31E-06	5.65E-06
	26/03/2021	4.57E-06	3.55E-06
	28/06/2021	8.90E-06	1.40E-06
Monitoring equipment	The CH4 monitoring equipment consists of gas flasks, filled with sodium hydroxide solution and additional chemicals to prevent oxidation. The gas sampling is carried out using ASTM Standard Practice E1675 for Sampling 2-Phase Geothermal Fluid for Purposes of Chemical Analysis (as applicable to sampling single phase steam only). The analysis is carried out by an external laboratory accredited under ISO 17025 by the National Accreditation Committee (KAN - Komite Akreditasi Nasional).		
Measuring/reading/recording frequency	Sampling, analysis, and recording are performed every 3 months.		
Calculation method (if applicable)	N/A		
QA/QC procedures	Detailed procedures are described in the CDM Monitoring Manual		
Purpose of data/parameter	Project emission calculation		
Additional comments	-		

Data/Parameter	M_{steam,y}
Unit	t steam/yr
Description	Quantity of steam produced during the year y
Measured/calculated/default	Measured
Source of data	Continuous measurement by a Venturi flow meter (M _{sv,y}) located at the upstream of the Wayang Windu Unit 2 turbine and which is adjusted for losses of brine at the steam separator (M _{sb,y}) as well as Orifice Plates (M _{so,i,y}) located at the Wayang Windu Unit 2 well heads.
Value(s) of monitored parameter	Refer to Annex 3 Daily Steam Data Wayang Windu Phase 2

Monitoring equipment	Steam flow to WW-2 turbine		
	Tag number	A2-FIT-0106	
	Brand & Type	Yokogawa EJX910A	
	Serial number	91L410293	
	Accuracy class	0.04%	
	Calibration frequency	Biannually	
	Calibration	05/12/2017	
	Calibration	05/06/2018	
	Calibration	05/12/2018	
	Calibration	05/06/2019	
	Calibration	05/12/2019	
	Calibration	05/06/2020	
	Calibration	05/12/2020	
	Last Calibration	05/06/2021	
	Validity	05/12/2021	
	MBB-1 Well steam flow		
	Tag number	FIT-2301	PIT-2302
	Brand & Type	Rosemount 3051C	Rosemount 3051T
	Serial number	01830354	01830135
	Accuracy class	0.065%	0.065%
	Calibration frequency	Biannually	
	Calibration	03/12/2017	02/12/2017
	Calibration	03/06/2018	02/06/2018
	Calibration	03/12/2018	02/12/2018
	Brand & Type	Yokogawa EJX110A	
	Calibration	03/06/2019	02/06/2019
	Calibration	03/12/2019	02/12/2019
	Calibration	03/06/2020	02/06/2020
	Calibration	03/12/2020	02/12/2020
	Last calibration	03/06/2021	02/06/2021
	Validity	03/12/2021	02/12/2021
	MBB-2 Well Steam Flow		
	Tag number	FIT-2302	PIT-2304
	Brand & Type	Rosemount 3051C	Rosemount 3051T
	Serial number	02990632	02990636
	Accuracy class	0.065%	0.065%
	Calibration frequency	Biannually	
	Calibration	05/12/2017	03/12/2017
	Calibration	05/06/2018	03/06/2018
	Calibration	05/12/2018	03/12/2018
Calibration	05/06/2019	03/06/2019	
Calibration	05/12/2019	03/12/2019	
Calibration	05/06/2020	03/06/2020	
Calibration	05/12/2020	03/12/2020	
Last calibration	05/06/2021	03/06/2021	
Validity	05/12/2021	03/12/2021	

MBB-3 Well steam flow

Tag number	FIT-2303	PIT-2306
Brand & Type	Rosemount 3051C	Rosemount 3051T
Serial number	02990633	02990637
Accuracy class	0.065%	0.065%
Calibration frequency	Biannually	
Calibration	06/12/2017	05/12/2017
Calibration	06/06/2018	05/06/2018
Calibration	06/12/2018	05/12/2018
Calibration	06/06/2019	05/06/2019
Calibration	06/12/2019	05/12/2019
Calibration	06/06/2020	05/06/2020
Calibration	06/12/2020	05/12/2020
Last calibration	06/06/2021	05/06/2021
Validity	06/12/2021	05/12/2021

MBB-4 Well steam flow

Tag number	FIT-2304	PIT-2308
Brand & Type	Rosemount 3051C	Rosemount 3051T
Serial number	02990634	02990638
Accuracy class	0.065%	0.065%
Calibration frequency	Biannually	
Calibration	06/12/2017	03/12/2017
Calibration	06/06/2018	03/06/2018
Calibration	06/12/2018	03/12/2018
Calibration	06/06/2019	03/06/2019
Calibration	06/12/2019	03/12/2019
Calibration	06/06/2020	03/06/2020
Calibration	06/12/2020	03/12/2020
Last calibration	03/06/2021	03/06/2021
Validity	03/12/2021	03/12/2021

MBB-5 Well steam flow

Tag number	FIT-2305	PIT-2310
Brand & Type	Rosemount 3051C	Rosemount 3051T
Serial number	02990635	02990639
Accuracy class	0.065%	0.065%
Calibration frequency	Biannually	
Calibration	07/12/2017	07/12/2017
Calibration	07/06/2018	07/06/2018
Calibration	07/12/2018	07/12/2018
Calibration	07/06/2019	07/06/2019
Calibration	07/12/2019	07/12/2019
Calibration	07/06/2020	07/06/2020
Calibration	07/12/2020	07/12/2020
Last calibration	07/06/2021	07/06/2021
Validity	07/12/2021	07/12/2021

MBA-1 Well steam flow

Tag number	FIT-2501	PIT-2502
Brand & Type	Rosemount 3051C	Rosemount 3051T
Serial number	01830374	01830130
Accuracy class	0.065%	0.065%
Calibration frequency	Biannually	
Calibration	02/12/2017	01/12/2017
Calibration	02/06/2018	01/06/2018
Calibration	02/12/2018	01/12/2018
Calibration	02/06/2019	01/06/2019
Calibration	02/12/2019	01/12/2019
Calibration	02/06/2020	01/06/2020
Calibration	02/12/2020	01/12/2020
Last calibration	02/06/2021	01/06/2021
Validity	02/12/2021	01/12/2021

MBA-2 Well steam flow

Tag number	FIT-2502	PIT-2504
Brand & Type	Rosemount 3051C	Rosemount 3051T
Serial number	02065517	01830131
Accuracy class	0.065%	0.065%
Calibration frequency	Biannually	
Calibration	01/06/2018	01/06/2018
Calibration	01/12/2018	01/12/2018
Calibration	01/06/2019	01/06/2019
Calibration	01/12/2019	01/12/2019
Calibration	01/06/2020	01/06/2020
Calibration	01/12/2020	01/12/2020
Last calibration	01/06/2021	01/06/2021
Validity	01/12/2021	01/12/2021

MBA-3 Well steam flow

Tag number	FIT-2503	PIT-2506
Brand & Type	Rosemount 3051C	Rosemount 3051T
Serial number	01830360	01830132
Accuracy class	0.065%	0.065%
Calibration frequency	Biannually	
Calibration	02/12/2017	02/12/2017
Calibration	02/06/2018	02/06/2018
Calibration	02/12/2018	02/12/2018
Calibration	02/06/2019	02/06/2019
Calibration	02/12/2019	02/12/2019
Calibration	02/06/2020	02/06/2020
Calibration	02/12/2020	02/12/2020
Last calibration	02/06/2021	02/06/2021
Validity	02/12/2021	02/12/2021

MBA-4 Well steam flow

Tag number	FIT-2504	PIT-2508
Brand & Type	Rosemount 3051C	Rosemount 3051T
Serial number	01830361	01831233
Accuracy class	0.065%	0.065%
Calibration	02/12/2017	01/12/2017
Calibration	02/06/2018	01/06/2018
Calibration	02/12/2018	01/12/2018
Calibration	02/06/2019	01/06/2019
Calibration	02/12/2019	01/12/2019
Calibration	02/06/2020	01/06/2020
Calibration	02/12/2020	01/12/2020
Last calibration	02/06/2021	01/06/2021
Validity	02/12/2021	01/12/2021

MBA-5 Well steam flow

Tag number	FIT-2505	PIT-2510
Brand & Type	Rosemount 3051C	Rosemount 3051T
Serial number	03387208	01830134
Accuracy class	0.065%	0.065%
Calibration	30/05/2018	01/06/2018
Calibration	30/11/2018	01/12/2018
Calibration	30/05/2019	01/06/2019
Calibration	30/11/2019	01/12/2019
Calibration	30/05/2020	01/06/2020
Calibration	30/11/2020	01/12/2020
Last calibration	30/05/2021	01/06/2021
Validity	30/11/2021	01/12/2021

MBD-5 Well steam flow

Tag number	FIT-501	PIT-506
Brand & Type	Rosemount 3051C	Rosemount 3051T
Serial number	01845811	01593780
Accuracy class	0.065%	0.065%
Calibration frequency	Biannually	
Calibration	02/12/2017	02/12/2017
Calibration	02/06/2018	02/06/2018
Calibration	02/12/2018	02/12/2018
Calibration	02/06/2019	02/06/2019
Calibration	02/12/2019	02/12/2019
Calibration	02/06/2020	02/06/2020
Calibration	02/12/2020	02/12/2020
Last calibration	02/06/2021	02/06/2021
Validity	02/12/2021	02/12/2021

	WWF-3 Brine Injection well		
	Tag number	FIT-980	PIT-799
	Brand & Type	Bailey PTHDDD	Yokogawa EJX530A
	Serial number	8G199082	91M523084
	Accuracy class	0.08%	0.04%
	Calibration frequency	Biannually	
	Calibration	04/12/2017	04/12/2017
	Calibration	04/06/2018	04/06/2018
	Calibration	04/12/2018	04/12/2018
	Calibration	04/06/2019	04/06/2019
	Calibration	04/12/2019	04/12/2019
	Calibration	04/06/2020	04/06/2020
	Calibration	04/12/2020	04/12/2020
	Last calibration	04/06/2021	04/06/2021
	Validity	04/12/2021	04/12/2021
Measuring/reading/recording frequency	Data is monitored continuously (polling of at least every second) and condensed to half hour values. Daily figures will be built according to the methodology by accumulation of data.		
Calculation method (if applicable)	In order to be conservative, the primary data will be taken from the higher values from either the upstream metering points or the downstream metering. In case steam is transferred from unit 1 steam fields for power generation at unit 2 the upstream figure will higher. In case steam from the new steam fields at unit 2 will be transferred to the power generator of unit 1 the downfield figure will be higher. Using the higher one of the two values ensures that project emissions, which are attributable to the capacity addition by unit 2, are clearly identified and accounted. Thus, the quantity of steam ($M_{s,y}$) is given by: $M_{s,y} = \max((M_{sv,y} + M_{sb,y}), \Sigma M_{so,y})$		
QA/QC procedures	Flow meters' instruments are calibrated using internal calibrator by SEG(WW)L EC&I Supervisor. The internal calibrator is calibrated every 2 years by accredited laboratory. In accordance to the SEG(WW)L internal procedure, calibration is to be conducted every 6 months Following the industry's practice, it is acceptable for the calibration to be conducted between 6 months to 1-year period from the last calibration date. The calibration procedure is described in the CDM monitoring manual and plant routine inspection procedure, the maximum permissible error is 0.1%. The internal calibrators are calibrated every 2 years by accredited laboratory. Detailed procedures are described in the CDM Monitoring Manual.		
Purpose of data/parameter	Project emission calculation		
Additional comments	Details information about the calibration of the calibrators has been provided to the DOE.		

Data/Parameter	FC_{i,j,y}
Unit	m ³ /yr
Description	Quantity of fuel type i combusted in process j during the year y
Measured/calculated/default	Measured
Source of data	Onsite measurements
Value(s) of monitored parameter	16,02

Monitoring equipment	Flowmeter at the inlet of the daily tank for the diesel fuel consumption for emergency gen-set			
	Tokico			
	Tag number		AO-FQ-2033	
	Serial Number		LL60223	
	Accuracy class		0.5%	
	Calibration frequency		Annually	
	Calibration		15/09/2017	
	Calibration		29/08/2019	
	Last calibration		28/09/2020	
	Validity		28/09/2021	
	During this monitoring period, there were errors found during the calibration are as follows:			
	Tag number	Calibration Expired date	Error Based on calibration record	Period where error calculation applied
	AO-FQ-2033	15/09/2018	+0.5%	15/09/2018 – 27/09/2019
	Tokico			
	Tag number		AO-FQ-2032	
Serial Number		LL60217		
Accuracy class		0.5%		
Calibration frequency		Annually		
Calibration		18/09/2017		
This equipment S/N LL60217 is damage and replace by the new one S/N OF13532 for record fire fuel tank.				
Tokico				
Tag number		AO-FQ-2032		
Serial Number		OF13532		
Accuracy class		0.5%		
Calibration frequency		Annually		
Calibration		12/12/2018		
Calibration		29/08/2019		
Last calibration		28/09/2020		
Validity		28/09/2021		
During this monitoring period, there were errors found during the calibration are as follows:				
Tag number	Calibration Expired date	Error Based on calibration record	Period where error calculation applied	
AO-FQ-2032	18/09/2018	+0.5%	18/09/2018 – 12/12/2018	
AO-FQ-2032	29/08/2019	+0.5%	30/08/2019 – 27/09/2019	

Measuring/reading/recording frequency	Data is collected monthly
Calculation method (if applicable)	Measurement of diesel fuel consumption for emergency genset and fire pump multiplied with the national data of the diesel fuel density. Readings from the flowmeter at the inlet of the daily tank for emergency genset and readings from the flowmeter at the inlet diesel tank for the fire pump are recorded during the first week of the month.
QA/QC procedures	The consistency of measured diesel fuel consumption quantities was cross-checked by an annual energy balance that was based on engine specification fuel consumption (emergency genset and fire pump) and the working hour
Purpose of data/parameter	Project emission calculation
Additional comments	

Data/Parameter	NCV_{i,y}
Unit	GJ/ton
Description	Weighted average net calorific value of diesel fuel in year y
Measured/calculated/default	Default
Source of data	Regional or national default values If a) is not available These sources can only be used for liquid fuels and should be based on well documented, reliable sources (such as national energy balances). The National value (Pertamina handbook – Bahan Bakar Minyak Elpiji dan BBG) is used.
Value(s) of monitored parameter	42.73
Monitoring equipment	N/A
Measuring/reading/recording frequency	Review appropriateness of the values annually
Calculation method (if applicable)	N/A
QA/QC procedures	Verify if the values under a), b) and c) are within the uncertainty range of the IPCC default values as provided in Table 1.2, Vol. 2 of the 2006 IPCC Guidelines. If the values fall below this range collect additional information from the testing laboratory to justify the outcome or conduct additional measurements. The laboratories in a), b) or c) should have ISO17025 accreditation or justify that they can comply with similar quality standards. Detailed procedures are described in the CDM Monitoring Manual
Purpose of data/parameter	Project emission calculation
Additional comments	-

Data/Parameter	EF_{CO₂,i,y}
Unit	tCO ₂ /GJ
Description	Weighted average CO ₂ emission factor of diesel fuel in year y
Measured/calculated/default	Default
Source of data	IPCC default values at the upper limit of the uncertainty at 95% confidence interval as provided in Table 1.2 of Chapter 1 Vol.2 (Energy) of the 2006 IPCC Guidelines on National GHG Inventories
Value(s) of monitored parameter	0.0748

Monitoring equipment	N/A
Measuring/reading/recording frequency	Any future revision of the IPCC Guidelines should be taken into account
Calculation method (if applicable)	N/A
QA/QC procedures	Detailed procedures are described in the CDM Monitoring Manual
Purpose of data/parameter	Project emission calculation
Additional comments	

Data/Parameter	EG_y
Unit	MWh/yr
Description	Electricity supplied by the project activity to the grid (total of net electricity generated by Wayang Windu Unit 1 and Unit 2) in year y
Measured/calculated/default	Measured
Source of data	The reading of the electricity from the transaction meters from Wayang Windu Unit 1 and Unit 2. Primary data is sourced from the check kWh meters downloaded daily from the DCS
Value(s) of monitored parameter	Refer to Annex 5 Monthly Data Wayang Windu Unit 1 and Unit 2

Monitoring equipment	Wayang Windu 1 main kWh meter which is owned by PLN
	Serial number MT-0809A063-01
	Accuracy class 0.2%
	Calibration frequency Every 5 years
	Previous Calibration 10/09/2018
	Validity 10/09/2023
	Wayang Windu 1 check kWh meter which is owned by SEG(WW)L (primary data):
	Serial number PT-0807A249-01
	Accuracy class 0.2%
	Calibration frequency Every 2 years
	Previous Calibration 10/09/2018
	Validity 10/09/2020*
	Wayang Windu 2 main kWh meter which is owned by PLN:
	Serial number MT-0806A388 – 01
	Accuracy class 0.2%
	Calibration frequency Every 5 years
	Previous Calibration 10/09/2018
	Validity 10/09/2023
	Wayang Windu 2 check kWh meter which is owned by SEG(WW)L (primary data):
	Serial number PT-0802A194-01
	Accuracy class 0.2%
	Calibration frequency Every 2 years
	Previous Calibration 10/09/2018
	Validity 10/09/2020*
	Refer to Annex 4 Monitoring Equipments for further details
	*Calibration will be performed in November 2021 due to COVID-19 pandemic.
Measuring/reading/recording frequency	The meter reading is recorded every half hourly and recorded automatically at load profile at the transaction kWh meters.
Calculation method (if applicable)	N/A
QA/QC procedures	Based on the Standard Operating Procedure of Metering System of PT PLN (Persero) P3B – Jawa Bali revision A, the data from the main meter and the check meter are compared on the monthly basis and any differences greater than 0.4% (the maximum difference of the main meter of 0.2 class and check meter of 0.2 class) will be investigated further. During this monitoring period, the difference between the data from main meter and check meter has never achieved a difference exceeding 0.4% and therefore is considered acceptable. Primary data (data applied to the CERs calculation) is sourced from the check meter. Detailed procedures are described in the CDM Monitoring Manual.
Purpose of data/parameter	Baseline emission calculation
Additional comments	-

Data/Parameter	EG _{existing}
Unit	MWh/yr
Description	Electricity supplied by the existing power generation unit to the grid (total of net electricity generated by Wayang Windu Unit 1) in year y

Measured/calculated/default	Measured																				
Source of data	The reading of the electricity from the transaction meters from Wayang Windu Unit 1. Primary data is sourced from the check kWh meters.																				
Value(s) of monitored parameter	Refer to Annex 5 Monthly Data Wayang Windu Unit 1																				
Monitoring equipment	<p>Wayang Windu 1 main kWh meter which is owned by PLN</p> <table border="1"> <tr> <td>Serial number</td><td>MT-0809A063-01</td></tr> <tr> <td>Accuracy class</td><td>0.2%</td></tr> <tr> <td>Calibration frequency</td><td>Every 5 years</td></tr> <tr> <td>Previous Calibration</td><td>10/09/2018</td></tr> <tr> <td>Validity</td><td>10/09/2023</td></tr> </table> <p>Wayang Windu 1 check kWh meter which is owned by SEG(WW)L (primary data):</p> <table border="1"> <tr> <td>Serial number</td><td>PT-0807A249-01</td></tr> <tr> <td>Accuracy class</td><td>0.2%</td></tr> <tr> <td>Calibration frequency</td><td>Every 2 years</td></tr> <tr> <td>Previous Calibration</td><td>10/09/2018</td></tr> <tr> <td>Validity</td><td>10/09/2020*</td></tr> </table> <p>Refer to Annex 4 Monitoring Equipment for further details</p>	Serial number	MT-0809A063-01	Accuracy class	0.2%	Calibration frequency	Every 5 years	Previous Calibration	10/09/2018	Validity	10/09/2023	Serial number	PT-0807A249-01	Accuracy class	0.2%	Calibration frequency	Every 2 years	Previous Calibration	10/09/2018	Validity	10/09/2020*
Serial number	MT-0809A063-01																				
Accuracy class	0.2%																				
Calibration frequency	Every 5 years																				
Previous Calibration	10/09/2018																				
Validity	10/09/2023																				
Serial number	PT-0807A249-01																				
Accuracy class	0.2%																				
Calibration frequency	Every 2 years																				
Previous Calibration	10/09/2018																				
Validity	10/09/2020*																				
Measuring/reading/recording frequency	The meter reading is recorded every half hourly and recorded automatically at load profile at the transaction kWh meters.																				
Calculation method (if applicable)	N/A																				
QA/QC procedures	Based on the Standard Operating Procedure of Metering System of PT PLN (Persero) P3B – Jawa Bali revision A, the data from the main meter and the check meter are compared on the monthly basis and any differences greater than 0.4% (the maximum difference of the main meter of 0.2 class and check meter of 0.2 class) will be investigated further. During this monitoring period, the difference between the data from main meter and check meter has never achieved a difference exceeding 0.4% and therefore is considered acceptable. Primary data (data applied to the CERs calculation) is sourced from the check meter. Detailed procedures are described in the CDM Monitoring Manual.																				
Purpose of data/parameter	Baseline emission calculation																				
Additional comments	-																				

D.3. Implementation of sampling plan

>>

Not applicable for this project activity

SECTION E. Calculation of emission reductions or net anthropogenic removals

E.1. Calculation of baseline emissions or baseline net removals

>>

The formula used for determination of the baseline emissions are described in section B.6.3 of the Project Design Document v11 dated 11 February 2020, and available upon the UNFCCC website (<http://cdm.unfccc.int/Projects/DB/TUEV-SUED1260194062.48/view>).

Baseline emissions are calculated as follows:

$$BE_y = EG_{PJ,y} \times EF_{grid,CM,y}$$

Where:

- BE_y = Baseline emissions in year y (t CO₂/yr)
- $EG_{PJ,y}$ = Quantity of net electricity generation that is produced and fed into the grid as a result of the implementation of the CDM project activity in year y (MWh/yr)
- $EF_{grid,CM,y}$ = Combined margin CO₂ emission factor for grid connected power generation in year y calculated using the latest version of the “Tool to calculate the emission factor for an electricity system” (t CO₂/MWh). $EF_{grid,CM,y}$ for this monitoring period is 0.945 tCO₂/MWh.

1. $EG_{PJ,y}$ is calculated as follows:

$$EG_{PJ,y} = EG_{facility,y} - (EG_{historical} + \sigma_{historical}); \text{until } DATE_{BaselineRetrofit}$$

and

$$EG_{PJ,y} = 0; \text{on/after } DATE_{BaselineRetrofit}$$

Where:

- $EG_{PJ,y}$ = Quantity of net electricity generation that is produced and fed into the grid as a result of the implementation of the CDM project activity in year y (MWh/yr)
- $EG_{facility,y}$ = Quantity of net electricity generation supplied by the project plants/units to the grid in year y (MWh/yr)
- $EG_{historical}$ = Annual average historical net electricity generation delivered to the grid by the existing renewable energy power plants/units that was operated at the project site prior to the implementation of the project activity (MWh/yr)
- $\sigma_{historical}$ = Standard deviation of the annual average historical net electricity generation delivered to the grid by the existing renewable energy power plants/units that was operated at the project site prior to the implementation of the project activity (MWh/yr)
- $DATE_{BaselineRetrofit}$ = Point in time when the existing equipment would need to be replaced in the absence of the project activity (date). This only applies to retrofit or replacement projects

In case $EG_{facility,y} < (EG_{historical} + \sigma_{historical})$ in a year y then:

$$EG_{PJ,y} = 0$$

Monitored Baseline Emission Calculation

$EG_{facility,y}$	Monitored	6,728,776	MWh
Duration Monitoring Period	02/12/2017 – 30/06/2021	1307	Days
$EG_{historical}$	average of historical electricity delivered by the existing facility (Wayang Windu Phase 1) to the grid, spanning all data from the most recent available month February 2009 to the time at which the facility was operated (June 2000)	912,476	MWh
$\sigma_{historical}$	Standard deviation of the annual average historical net electricity generation delivered to the grid by the existing facility (Wayang Windu Phase 1) to the grid	5,952	MWh
$EG_{PJ,y}$	6,733,882- ((912,476*1307/365)+5952)	3,455,411	MWh
Baseline Emissions in MP	3,460,517.39 x 0.945	3,267,080	tCO ₂ e

E.2. Calculation of project emissions or actual net removals

>>

The formula used for determination of the baseline emissions are described in section B.6.3 of the Project Design Document v11 dated 11 February 2020, and available upon the UNFCCC website (<http://cdm.unfccc.int/Projects/DB/TUEV-SUED1260194062.48/view>).

Project emissions are calculated as follows:

$$PE_y = PE_{FF,y} + PE_{GP,y} + PE_{HP,y}$$

Where:

- PE_y = Project emission in year y (tCO₂/yr)
 $PE_{FF,y}$ = Project emissions from fossil fuel consumption in year y (t CO₂/yr)
 $PE_{GP,y}$ = Project emissions from the operation of dry, flash steam or binary geothermal power plants in year y (t CO₂e/yr)
 $PE_{HP,y}$ = Project emissions from water reservoirs of hydro power plants in year y (t CO₂e/yr)

Project emission of CO₂ and CH₄ due to the release of non-condensable gases from the steam produced in the geothermal power plant is calculated as:

$$PE_{GP,y} = PE_{dry\ or\ flash\ steam,y} + PE_{binary,y}$$

Where:

- $PE_{GP,y}$ = Project emissions from the operation of dry steam, flash steam and/or binary geothermal power plants in year y (t CO₂e/yr)
 $PE_{dry\ or\ flash\ steam,y}$ = Project emissions from the operation of dry steam or flash steam geothermal power plants due to release of non-condensable gases in year y (t CO₂e/yr)
 $PE_{binary,y}$ = Project emissions from the operation of binary geothermal power plants due to physical leakage of non-condensable gases and working fluid in year y (t CO₂e/yr)

(a) Project emissions from dry or flash steam geothermal power plants:

$$PE_{dry\ or\ flash\ steam,y} = (w_{steam,CO_2,y} + w_{steam,CH_4,y} \times GWP_{CH_4}) \times M_{steam,y}$$

Where:

- $w_{steam,CO_2,y}$ = Average mass fraction of CO₂ in the produced steam in year y (t CO₂/t steam)
 $w_{steam,CH_4,y}$ = Average mass fraction of CH₄ in the produced steam in year y (t CH₄/t steam)
 GWP_{CH_4} = Global warming potential of CH₄ valid for the relevant commitment period (t CO₂e/t CH₄)
 $M_{steam,y}$ = Quantity of steam produced in year y (t steam/yr)

$$PE_{dry\ or\ flash\ steam,y} = (w_{steam,CO_2,y} + w_{steam,CH_4,y} \times GWP_{CH_4}) \times M_{steam,y}$$

$$PE_{dry\ or\ flash\ steam,y} = (0.0098 + 2.32 \cdot 10^{-5} \cdot 25) \cdot 30,860,645.81$$

$$= 321,049 \text{ tCO}_2/\text{yr}$$

Project emission from combustion of fossil fuel related to the operation of geothermal power plant is calculated as:

$$PE_{FF,y} = PE_{FC,j,y}$$

Where:

- $PE_{FF,y}$ = project emissions from combustion of fossil fuels related to the operation of the geothermal power plant in year y (/yr)
 $PE_{FC,j,y}$ = CO₂ emissions from fossil fuel combustion in process j during the year y (tCO₂/yr). This parameter will be calculated by the “tool to calculate project or leakage CO₂ emissions from fossil fuel combustion version 03”

$$PE_{FC,j,y} = \sum_i FC_{i,j,y} \times COEF_{i,y}$$

Where:

$FC_{diesel,j,y}$ = quantity of diesel combusted in emergency genset and fire pump during the historical year of Wayang Windu 1 operation (ton)

$COEF_{i,y}$ = CO₂ emission coefficient of diesel fuel (tCO₂/ton)

$COEF_{i,y}$ is calculated based on net calorific value and CO₂ emission factor of diesel fuel, as follows:

$$COEF_{i,y} = NCV_{i,y} \times EF_{CO_2,i,y}$$

Where:

$NCV_{diesel,y}$ = weighted average net calorific value of diesel fuel (IPCC default values at the upper limit of the uncertainty at a 95% confidence interval as provided in Table 1.2 of Chapter 1 of Vol.2 (Energy) of the 2006 IPCC Guidelines on National GHG Inventories) (GJ/ton)

$EF_{CO_2,diesel,y}$ = weighted average CO₂ emission factor of diesel fuel historical (IPCC default values at the upper limit of the uncertainty at a 95% confidence interval as provided in Table 1.2 of Chapter 1 of Vol.2 (Energy) of the 2006 IPCC Guidelines on National GHG Inventories) (tCO₂/GJ)

$$\begin{aligned} COEF_{i,y} &= 42.73 \times 0.0748 \\ &= 3.196204 \text{ (tCO}_2\text{/ton)} \end{aligned}$$

$$\begin{aligned} FC_{diesel,j,y} &= (22,988.525/1000) \times 0.87 \\ &= 20 \text{ ton} \end{aligned}$$

$$\begin{aligned} PE_{FC,j,y} &= 20 \text{ ton} \times 3.196204 \text{ tCO}_2\text{/ton} \\ &= 63.92 \text{ (tCO}_2\text{/yr)} \end{aligned}$$

$$\begin{aligned} PE_y &= PES_y + PEFF_y \\ &= 321,049 + 63.92 \\ &= 321,113 \text{ (tCO}_2\text{/yr)} \end{aligned}$$

E.3. Calculation of leakage emissions

>>

Since ACM0002 version 19 does not consider the emission due to power plant construction and fuel handlings, no leakage is considered ($L_y = 0$).

E.4. Calculation of emission reductions or net anthropogenic removals

	Baseline GHG emissions or baseline net GHG removals (t CO ₂ e)	Project GHG emissions or actual net GHG removals (t CO ₂ e)	Leakage GHG emissions (t CO ₂ e)	GHG emission reductions or net anthropogenic GHG removals (t CO ₂ e)			
				Before 01/01/2013	From 01/01/2013 until 31/12/2020	From 01/01/2021	Total amount
Total	3,266,280	322,525	0	N/A	2,529,102	405,870	2,934,972

E.5. Comparison of emission reductions or net anthropogenic removals achieved with estimates in the registered PDD

Amount achieved during this monitoring period (t CO ₂ e)	Amount estimated ex ante for this monitoring period in the PDD (t CO ₂ e)
2,934,972	2,660,668

E.5.1. Explanation of calculation of “amount estimated ex ante for this monitoring period in the PDD”

>>

The amount estimated ex ante in PDD is 2,660,669 t CO₂e for 1,307 days (2 December 2017 – 30 June 2021).

E.6. Remarks on increase in achieved emission reductions

>>

The amount of emission reductions achieved is higher than the amount estimated ex-ante due to higher capacity factor during monitoring period.

E.7. Remarks on scale of small-scale project activity

>>

N/A

Annex 1. Downtime and Shutdown Records

WW Unit#1 Un-Availability State									
NO	DESYNCRONIZED		SYNCHRONIZED		TOTAL HOURS	TOTAL GENERATION LOST (MWh)	State	UN-AVAILABILITY CAUSED	DOCUMENT REFERENCE
	DATE	TIME	DATE	TIME					
1	23-May-18	3:21	23-May-18	5:33	2:12	243.6	Forced Outage (FO)	EHG (Electro Hydraulic Governor) Woodward 505 Internal Heavy Fault	
2	2-Jan-19	13:31	2-Jan-19	15:53	2:22	262.0	Forced Outage (FO)	A1_LIT1000B (Level Indicator Transmitter) low-low level,and caused both ACWP trip	
3	22-Jun-19	22:37	4-Jul-19	12:53	278:16	30,806.6	Planned Outage (PO)	Turbine Overhaul	
4	27-Feb-20	11:55	27-Feb-20	13:49	1:54	213.6	Forced Outage (FO)	EHG (Electro Hydraulic Governor) Woodward 505 Internal Heavy Fault	
5	27-Feb-20	18:29	27-Feb-20	19:50	1:20	149.9	Forced Outage (FO)	EHG (Electro Hydraulic Governor) Woodward 505 Internal Heavy Fault	
6	2-Mar-20	13:53	2-Mar-20	15:48	1:54	213.6	Forced Outage (FO)	EHG (Electro Hydraulic Governor) Woodward 505 Internal Heavy Fault	
7	2-Mar-20	17:54	2-Mar-20	21:48	3:53	436.5	Forced Outage (FO)	EHG (Electro Hydraulic Governor) Woodward 505 Internal Heavy Fault	
8	10-Mar-20	22:49	12-Mar-20	4:17	5:28	3,311.9	Forced Outage (FO)	EHG (Electro Hydraulic Governor) Woodward 505 Internal Heavy Fault	
9	26-Feb-21	21:22	28-Feb-21	16:05	18:43	3,311.9	Forced Outage (FO)	Relay 87G1 active	
10	8-Jul-21	10:17	8-Jul-21	11:35	1:18	113.8	Forced Outage (FO)	DCS failure due to loss of power supply	

WW Unit# 2 Un-Availability State									
	DESYNCRONIZED		SYNCHRONIZED		TOTAL	TOTAL GENERATION	State	UN-AVAILABILITY	DOCUMENT
NO	DATE	TIME	DATE	TIME	HOURS	LOST (MWh)		CAUSED	REFERENCE
1	17 Dec 2017	5:58	17 Dec 2017	12:48	6:50	770.6	Maintenance Outage (MO)	OMC - PLN Switchyard maintenance	
2	23 May 2018	3:21	23 May 2018	5:01	1:40	188.0	Forced Outage (FO)	Wheel Chamber Pressure Very High	
3	17 May 2019	11:21	18 May 2019	0:36	13:15	1,494.3	Forced Outage (FO)	EHG Shutdown	
4	26 Jun 2019	3:42	26 Jun 2019	23:35	19:53	2,242.3	Maintenance Outage (MO)	DCS Upgrade	
5	08 Jul 2021	10:17	09 Jul 2021	6:47	20:29	2,257.8	Forced Outage (FO)	DCS failure due to loss of power supply	
6	24 Aug 2021	22:06	03 Sep 2021	13:31	231:25	26,097.8	Planned Outage (PO)	Shutdown and Turnaround	

Annex 2. List of Relevant Operation and Maintenance Procedures

FIT Routine & Venture Inspection Procedures
 Routine Operation Procedures
 Metering System Operation, Maintenance and Calibration
 QA/QC Laboratory Analysis & Utilities Procedures
 Gas Sampling Procedures

Annex 3. Daily steam production data from Wayang Windu Phase 2 geothermal power project (Ms), Daily steam generation data measured by Venturi flowmeter (Msv,y), Daily losses of brine at the steam separator (Msb,y), Daily steam generation data measured by Orifice plates (Mso,y) during Monitoring Period

Date	Mso,i,y	Msb,y	Msv,y	Msb,y + Msv,y	M _{s,conservative}	M _s
	Wells	Brine	Main steam	Brine+Main Steam	Wells/Brine+Main Steam	Tons
02 Dec 2017	16,739	4,861	18,720	23,581.00	Brine+Main Steam	23,581.00
03 Dec 2017	16,736	4,807	18,710	23,517.00	Brine+Main Steam	23,517.00

Date	Mso,i,y	Msb,y	Msv,y	Msb,y + Msv,y	M _{s,conservative}	M _s
	Wells	Brine	Main steam	Brine+Main Steam	Wells/Brine+Main Steam	Tons
04 Dec 2017	16,733	4,885	18,710	23,595.00	Brine+Main Steam	23,595.00
05 Dec 2017	16,662	4,897	18,670	23,567.00	Brine+Main Steam	23,567.00
06 Dec 2017	10,782	4,913	18,690	23,603.00	Brine+Main Steam	23,603.00
07 Dec 2017	16,729	4,889	18,630	23,519.00	Brine+Main Steam	23,519.00
08 Dec 2017	16,680	4,908	18,560	23,468.00	Brine+Main Steam	23,468.00
09 Dec 2017	16,665	4,875	18,590	23,465.00	Brine+Main Steam	23,465.00
10 Dec 2017	16,767	4,855	18,840	23,695.00	Brine+Main Steam	23,695.00
11 Dec 2017	16,750	3,952	18,220	22,172.00	Brine+Main Steam	22,172.00
12 Dec 2017	16,753	4,738	18,770	23,508.00	Brine+Main Steam	23,508.00
13 Dec 2017	16,757	4,820	18,840	23,660.00	Brine+Main Steam	23,660.00
14 Dec 2017	15,747	4,776	18,740	23,516.00	Brine+Main Steam	23,516.00
15 Dec 2017	16,832	5,163	18,730	23,893.00	Brine+Main Steam	23,893.00
16 Dec 2017	15,022	4,967	15,250	20,217.00	Brine+Main Steam	20,217.00
17 Dec 2017	16,468	5,025	16,530	21,555.00	Brine+Main Steam	21,555.00
18 Dec 2017	17,467	5,473	18,670	24,143.00	Brine+Main Steam	24,143.00
19 Dec 2017	17,431	5,511	18,840	24,351.00	Brine+Main Steam	24,351.00
20 Dec 2017	17,357	5,380	17,820	23,200.00	Brine+Main Steam	23,200.00
21 Dec 2017	17,296	5,220	15,520	20,740.00	Brine+Main Steam	20,740.00
22 Dec 2017	17,306	5,128	18,850	23,978.00	Brine+Main Steam	23,978.00
23 Dec 2017	17,322	5,144	18,760	23,904.00	Brine+Main Steam	23,904.00
24 Dec 2017	17,327	5,207	18,720	23,927.00	Brine+Main Steam	23,927.00
25 Dec 2017	17,363	5,129	18,840	23,969.00	Brine+Main Steam	23,969.00
26 Dec 2017	17,575	5,180	18,800	23,980.00	Brine+Main Steam	23,980.00
27 Dec 2017	17,863	5,082	18,820	23,902.00	Brine+Main Steam	23,902.00
28 Dec 2017	17,582	4,993	18,850	23,843.00	Brine+Main Steam	23,843.00
29 Dec 2017	17,670	5,056	18,850	23,906.00	Brine+Main Steam	23,906.00
30 Dec 2017	17,672	5,157	18,870	24,027.00	Brine+Main Steam	24,027.00
31 Dec 2017	17,694	5,157	19,020	24,177.00	Brine+Main Steam	24,177.00

Date	Mso,i,y	Msb,y	Msv,y	Msb,y + Msv,y	M _{s,conservative}	M _s
	Wells	Brine	Main steam	Brine+Main Steam	Wells/Brine+Main Steam	Tons
01 Jan 2018	17,666	5,172	18,850	24022.00	Brine+Main Steam	24026.00
02 Jan 2018	17,582	5,146	18,830	23976.00	Brine+Main Steam	24027.00
03 Jan 2018	17,549	5,239	18,850	24089.00	Brine+Main Steam	24089.00
04 Jan 2018	17,543	5,204	18,850	24054.00	Brine+Main Steam	24054.00
05 Jan 2018	17,687	5,092	18,840	23932.00	Brine+Main Steam	23932.00
06 Jan 2018	17,567	5,116	18,850	23966.00	Brine+Main Steam	23966.00
07 Jan 2018	17,555	5,204	18,840	24044.00	Brine+Main Steam	24044.00
08 Jan 2018	17,581	5,178	18,710	23888.00	Brine+Main Steam	23888.00
09 Jan 2018	17,490	5,137	18,620	23757.00	Brine+Main Steam	23757.00
10 Jan 2018	17,602	5,156	18,850	24006.00	Brine+Main Steam	24006.00
11 Jan 2018	17,424	5,429	18,880	24309.00	Brine+Main Steam	24309.00
12 Jan 2018	17,863	5,298	18,840	24138.00	Brine+Main Steam	24138.00
13 Jan 2018	17,145	5,478	18,850	24328.00	Brine+Main Steam	24328.00
14 Jan 2018	18,169	5,329	18,850	24179.00	Brine+Main Steam	24179.00
15 Jan 2018	17,797	5,440	18,910	24350.00	Brine+Main Steam	24350.00
16 Jan 2018	18,340	5,249	18,890	24139.00	Brine+Main Steam	24139.00
17 Jan 2018	18,528	4,700	18,850	23550.00	Brine+Main Steam	23550.00
18 Jan 2018	18,414	4,726	18,850	23576.00	Brine+Main Steam	23576.00
19 Jan 2018	18,789	4,783	18,840	23623.00	Brine+Main Steam	23623.00
20 Jan 2018	19,120	4,775	18,850	23625.00	Brine+Main Steam	23625.00
21 Jan 2018	18,462	4,742	18,840	23582.00	Brine+Main Steam	23582.00
22 Jan 2018	18,419	4,884	18,850	23734.00	Brine+Main Steam	23734.00
23 Jan 2018	18,449	4,907	18,830	23737.00	Brine+Main Steam	23737.00
24 Jan 2018	15,919	4,999	18,840	23839.00	Brine+Main Steam	23839.00
25 Jan 2018	15,972	5,480	18,850	24330.00	Brine+Main Steam	24330.00
26 Jan 2018	16,837	5,459	18,840	24299.00	Brine+Main Steam	24299.00
27 Jan 2018	16,971	5,350	18,850	24200.00	Brine+Main Steam	24200.00
28 Jan 2018	16,819	5,293	18,840	24133.00	Brine+Main Steam	24133.00

Date	Mso,i,y	Msb,y	Msv,y	Msb,y + Msv,y	M _{s,conservative}	M _s
	Wells	Brine	Main steam	Brine+Main Steam	Wells/Brine+Main Steam	Tons
29 Jan 2018	17,658	5,401	18,850	24251.00	Brine+Main Steam	24251.00
30 Jan 2018	17,623	5,325	18,830	24155.00	Brine+Main Steam	24155.00
31 Jan 2018	17,652	5,267	18,850	24117.00	Brine+Main Steam	24117.00
01 Feb 2018	17,455	5,227	18,850	24,077.00	Brine+Main Steam	24077
02 Feb 2018	17,563	5,142	18,840	23,982.00	Brine+Main Steam	23982
03 Feb 2018	17,574	5,086	18,850	23,936.00	Brine+Main Steam	23936
04 Feb 2018	17,584	5,009	18,840	23,849.00	Brine+Main Steam	23849
05 Feb 2018	17,698	5,039	18,850	23,889.00	Brine+Main Steam	23889
06 Feb 2018	17,491	4,999	18,820	23,819.00	Brine+Main Steam	23819
07 Feb 2018	17,448	5,099	18,850	23,949.00	Brine+Main Steam	23949
08 Feb 2018	17,332	5,037	18,840	23,877.00	Brine+Main Steam	23877
09 Feb 2018	18,785	5,083	18,850	23,933.00	Brine+Main Steam	23933
10 Feb 2018	19,015	4,787	18,840	23,627.00	Brine+Main Steam	23627
11 Feb 2018	19,251	5,082	18,850	23,932.00	Brine+Main Steam	23933
12 Feb 2018	19,215	5,093	18,850	23,943.00	Brine+Main Steam	23945
13 Feb 2018	18,975	5,029	18,840	23,869.00	Brine+Main Steam	23869
14 Feb 2018	18,993	5,044	18,840	23,884.00	Brine+Main Steam	23884
15 Feb 2018	19,187	5,113	18,850	23,963.00	Brine+Main Steam	23966
16 Feb 2018	19,488	4,980	18,850	23,830.00	Brine+Main Steam	23832
17 Feb 2018	19,707	4,993	18,840	23,833.00	Brine+Main Steam	23833
18 Feb 2018	19,946	5,025	18,850	23,875.00	Brine+Main Steam	23875
19 Feb 2018	19,840	5,052	18,800	23,852.00	Brine+Main Steam	23855
20 Feb 2018	19,769	4,874	18,850	23,724.00	Brine+Main Steam	23726
21 Feb 2018	19,693	4,864	18,840	23,704.00	Brine+Main Steam	23704
22 Feb 2018	19,980	4,338	18,850	23,188.00	Brine+Main Steam	23192
23 Feb 2018	19,907	3,718	18,850	22,568.00	Brine+Main Steam	22568
24 Feb 2018	20,212	3,487	18,850	22,337.00	Brine+Main Steam	22337
25 Feb 2018	20,500	3,441	18,840	22,281.00	Brine+Main Steam	22285

Date	Mso,i,y	Msb,y	Msv,y	Msb,y + Msv,y	M _{s,conservative}	M _s
	Wells	Brine	Main steam	Brine+Main Steam	Wells/Brine+Main Steam	Tons
26 Feb 2018	20,336	3,453	18,850	22,303.00	Brine+Main Steam	22303
27 Feb 2018	20,154	3,545	18,830	22,375.00	Brine+Main Steam	22375
28 Feb 2018	19,526	3,890	18,840	22,730.00	Brine+Main Steam	22756
01 Mar 2018	20,173	3,622	18,920	22,542.00	Brine+Main Steam	22543
02 Mar 2018	20,139	3,660	19,030	22,690.00	Brine+Main Steam	22690
03 Mar 2018	19,947	3,651	18,840	22,491.00	Brine+Main Steam	22491
04 Mar 2018	19,726	3,675	18,850	22,525.00	Brine+Main Steam	22525
05 Mar 2018	19,771	3,564	18,850	22,414.00	Brine+Main Steam	22417
06 Mar 2018	20,321	3,439	18,840	22,279.00	Brine+Main Steam	22286
07 Mar 2018	20,081	3,781	18,850	22,631.00	Brine+Main Steam	22643
08 Mar 2018	20,087	3,633	18,840	22,473.00	Brine+Main Steam	22473
09 Mar 2018	19,721	3,717	18,850	22,567.00	Brine+Main Steam	22614
10 Mar 2018	19,698	3,729	18,840	22,569.00	Brine+Main Steam	22578
11 Mar 2018	19,033	3,723	18,850	22,573.00	Brine+Main Steam	22582
12 Mar 2018	19,438	3,742	18,840	22,582.00	Brine+Main Steam	22582
13 Mar 2018	19,837	3,746	18,850	22,596.00	Brine+Main Steam	22627
14 Mar 2018	19,734	3,677	18,850	22,527.00	Brine+Main Steam	22625
15 Mar 2018	20,015	3,354	18,840	22,194.00	Brine+Main Steam	22213
16 Mar 2018	19,873	3,649	18,850	22,499.00	Brine+Main Steam	22499
17 Mar 2018	19,621	3,468	18,840	22,308.00	Brine+Main Steam	22382
18 Mar 2018	19,974	3,435	18,850	22,285.00	Brine+Main Steam	22327
19 Mar 2018	19,828	3,703	18,840	22,543.00	Brine+Main Steam	22636
20 Mar 2018	20,055	3,544	18,820	22,364.00	Brine+Main Steam	22397
21 Mar 2018	20,074	3,583	18,840	22,423.00	Brine+Main Steam	22494
22 Mar 2018	19,706	3,467	18,850	22,317.00	Brine+Main Steam	22387
23 Mar 2018	19,795	3,467	18,840	22,307.00	Brine+Main Steam	22347
24 Mar 2018	19,958	3,252	18,850	22,102.00	Brine+Main Steam	22102
25 Mar 2018	19,637	3,194	18,850	22,044.00	Brine+Main Steam	22081

Date	Mso,i,y	Msb,y	Msv,y	Msb,y + Msv,y	M _{s,conservative}	M _s
	Wells	Brine	Main steam	Brine+Main Steam	Wells/Brine+Main Steam	Tons
26 Mar 2018	20,040	3,260	18,840	22,100.00	Brine+Main Steam	22100
27 Mar 2018	19,654	3,989	18,850	22,839.00	Brine+Main Steam	22889
28 Mar 2018	19,807	4,148	18,840	22,988.00	Brine+Main Steam	23040
29 Mar 2018	19,757	4,131	18,850	22,981.00	Brine+Main Steam	23123
30 Mar 2018	19,516	4,042	18,840	22,882.00	Brine+Main Steam	22909
31 Mar 2018	19,572	4,198	18,850	23,048.00	Brine+Main Steam	23130
01 Apr 2018	19,767	4,285	18,850	23,135.00	Brine+Main Steam	23197
02 Apr 2018	20,203	4,365	18,840	23,205.00	Brine+Main Steam	23275
03 Apr 2018	19,969	4,284	18,850	23,134.00	Brine+Main Steam	23204
04 Apr 2018	19,568	4,146	18,840	22,986.00	Brine+Main Steam	23083
05 Apr 2018	18,849	3,579	18,850	22,429.00	Brine+Main Steam	22468
06 Apr 2018	18,749	3,331	18,840	22,171.00	Brine+Main Steam	22179
07 Apr 2018	18,455	3,301	18,850	22,151.00	Brine+Main Steam	22166
08 Apr 2018	18,279	3,182	18,840	22,022.00	Brine+Main Steam	22039
09 Apr 2018	18,551	3,441	18,840	22,281.00	Brine+Main Steam	22322
10 Apr 2018	17,933	3,588	18,850	22,438.00	Brine+Main Steam	22483
11 Apr 2018	17,351	4,289	18,840	23,129.00	Brine+Main Steam	23187
12 Apr 2018	17,418	4,283	18,850	23,133.00	Brine+Main Steam	23171
13 Apr 2018	18,064	4,228	18,840	23,068.00	Brine+Main Steam	23136
14 Apr 2018	18,474	4,011	18,850	22,861.00	Brine+Main Steam	22912
15 Apr 2018	18,269	4,416	18,840	23,256.00	Brine+Main Steam	23291
16 Apr 2018	17,724	4,251	18,850	23,101.00	Brine+Main Steam	23130
17 Apr 2018	17,852	4,233	18,840	23,073.00	Brine+Main Steam	23074
18 Apr 2018	18,206	4,164	18,850	23,014.00	Brine+Main Steam	23014
19 Apr 2018	18,370	6,301	18,850	25,151.00	Brine+Main Steam	25151
20 Apr 2018	17,900	6,391	18,840	25,231.00	Brine+Main Steam	25231
21 Apr 2018	17,715	6,131	18,850	24,981.00	Brine+Main Steam	24981
22 Apr 2018	17,452	6,273	18,840	25,113.00	Brine+Main Steam	25113

Date	M _{so,i,y}	M _{sb,y}	M _{sv,y}	M _{sb,y} + M _{sv,y}	M _{s,conservative}	M _s
	Wells	Brine	Main steam	Brine+Main Steam	Wells/Brine+Main Steam	Tons
23 Apr 2018	17,243	6,246	18,850	25,096.00	Brine+Main Steam	25098
24 Apr 2018	17,546	6,234	18,840	25,074.00	Brine+Main Steam	25084
25 Apr 2018	18,595	6,226	18,850	25,076.00	Brine+Main Steam	25076
26 Apr 2018	17,806	6,205	18,850	25,055.00	Brine+Main Steam	25055
27 Apr 2018	17,546	6,144	18,840	24,984.00	Brine+Main Steam	24984
28 Apr 2018	17,621	6,113	18,850	24,963.00	Brine+Main Steam	24978
29 Apr 2018	17,790	6,098	18,840	24,938.00	Brine+Main Steam	24959
30 Apr 2018	17,331	6,047	18,850	24,897.00	Brine+Main Steam	24903
01 May 2018	17,824	6,034	18,840	24,874.00	Brine+Main Steam	24874
02 May 2018	17,206	6,089	18,850	24,939.00	Brine+Main Steam	24939
03 May 2018	17,443	5,996	18,840	24,836.00	Brine+Main Steam	24836
04 May 2018	17,765	6,073	18,850	24,923.00	Brine+Main Steam	24923
05 May 2018	17,746	6,039	18,840	24,879.00	Brine+Main Steam	24879
06 May 2018	17,434	6,068	18,840	24,908.00	Brine+Main Steam	24908
07 May 2018	17,552	6,014	18,850	24,864.00	Brine+Main Steam	24864
08 May 2018	17,971	5,998	18,840	24,838.00	Brine+Main Steam	24838
09 May 2018	16,922	6,006	18,850	24,856.00	Brine+Main Steam	24856
10 May 2018	16,259	5,984	18,840	24,824.00	Brine+Main Steam	24824
11 May 2018	16,929	5,961	18,850	24,811.00	Brine+Main Steam	24811
12 May 2018	16,277	5,922	18,840	24,762.00	Brine+Main Steam	24762
13 May 2018	16,936	5,899	18,850	24,749.00	Brine+Main Steam	24749
14 May 2018	17,771	6,029	18,840	24,869.00	Brine+Main Steam	24869
15 May 2018	18,752	6,044	18,850	24,894.00	Brine+Main Steam	24894
16 May 2018	17,920	6,412	18,850	25,262.00	Brine+Main Steam	25262
17 May 2018	17,830	6,196	18,840	25,036.00	Brine+Main Steam	25036
18 May 2018	16,789	6,194	18,850	25,044.00	Brine+Main Steam	25044
19 May 2018	17,118	6,211	18,840	25,051.00	Brine+Main Steam	25051
20 May 2018	17,590	6,189	18,850	25,039.00	Brine+Main Steam	25039

Date	Mso,i,y	Msb,y	Msv,y	Msb,y + Msv,y	M _{s,conservative}	M _s
	Wells	Brine	Main steam	Brine+Main Steam	Wells/Brine+Main Steam	Tons
21 May 2018	17,470	6,176	18,840	25,016.00	Brine+Main Steam	25016
22 May 2018	17,223	6,076	17,440	23,516.00	Brine+Main Steam	23516
23 May 2018	19,466	6,211	18,850	25,061.00	Brine+Main Steam	25061
24 May 2018	17,400	6,166	18,850	25,016.00	Brine+Main Steam	25016
25 May 2018	17,296	6,154	18,850	25,004.00	Brine+Main Steam	25004
26 May 2018	16,424	6,123	18,680	24,803.00	Brine+Main Steam	24803
27 May 2018	15,634	6,104	18,200	24,304.00	Brine+Main Steam	24304
28 May 2018	16,744	6,142	18,840	24,982.00	Brine+Main Steam	24982
29 May 2018	17,055	6,093	18,850	24,943.00	Brine+Main Steam	24943
30 May 2018	17,298	5,970	18,840	24,810.00	Brine+Main Steam	24810
31 May 2018	17,409	6,062	18,850	24,912.00	Brine+Main Steam	24912
01 Jun 2018	17,267	6,070	18,850	24,920.00	Brine+Main Steam	24920
02 Jun 2018	17,303	6,043	18,840	24,883.00	Brine+Main Steam	24883
03 Jun 2018	16,384	6,027	18,830	24,857.00	Brine+Main Steam	24857
04 Jun 2018	17,815	5,972	18,860	24,832.00	Brine+Main Steam	24832
05 Jun 2018	18,279	6,035	18,850	24,885.00	Brine+Main Steam	24885
06 Jun 2018	18,355	6,017	18,840	24,857.00	Brine+Main Steam	24857
07 Jun 2018	17,895	6,008	18,850	24,858.00	Brine+Main Steam	24858
08 Jun 2018	16,635	6,001	18,840	24,841.00	Brine+Main Steam	24841
09 Jun 2018	17,543	6,045	18,850	24,895.00	Brine+Main Steam	24895
10 Jun 2018	16,616	5,983	18,850	24,833.00	Brine+Main Steam	24833
11 Jun 2018	17,288	5,992	18,840	24,832.00	Brine+Main Steam	24832
12 Jun 2018	17,178	6,056	18,850	24,906.00	Brine+Main Steam	24906
13 Jun 2018	17,126	5,993	18,840	24,833.00	Brine+Main Steam	24833
14 Jun 2018	17,259	5,669	18,850	24,519.00	Brine+Main Steam	24519
15 Jun 2018	16,899	5,708	18,840	24,548.00	Brine+Main Steam	24548
16 Jun 2018	16,702	5,591	18,850	24,441.00	Brine+Main Steam	24441
17 Jun 2018	15,220	5,550	18,850	24,400.00	Brine+Main Steam	24400

Date	Mso,i,y	Msb,y	Msv,y	Msb,y + Msv,y	M _{s,conservative}	M _s
	Wells	Brine	Main steam	Brine+Main Steam	Wells/Brine+Main Steam	Tons
18 Jun 2018	15,268	5,590	18,840	24,430.00	Brine+Main Steam	24430
19 Jun 2018	15,322	5,552	18,850	24,402.00	Brine+Main Steam	24402
20 Jun 2018	15,441	5,629	18,840	24,469.00	Brine+Main Steam	24469
21 Jun 2018	17,317	5,573	18,850	24,423.00	Brine+Main Steam	24423
22 Jun 2018	18,163	5,574	18,840	24,414.00	Brine+Main Steam	24414
23 Jun 2018	17,397	5,490	18,850	24,340.00	Brine+Main Steam	24340
24 Jun 2018	17,671	5,547	18,840	24,387.00	Brine+Main Steam	24387
25 Jun 2018	18,108	5,512	18,840	24,352.00	Brine+Main Steam	24352
26 Jun 2018	17,494	5,548	18,850	24,398.00	Brine+Main Steam	24398
27 Jun 2018	17,990	5,515	18,840	24,355.00	Brine+Main Steam	24355
28 Jun 2018	18,169	5,544	18,850	24,394.00	Brine+Main Steam	24394
29 Jun 2018	18,279	5,503	18,840	24,343.00	Brine+Main Steam	24343
30 Jun 2018	16,365	5,461	18,850	24,311.00	Brine+Main Steam	24311
01 Jul 2018	17,879	5,457	18,840	24,297.00	Brine+Main Steam	24297
02 Jul 2018	17,918	5,481	18,850	24,331.00	Brine+Main Steam	24331
03 Jul 2018	17,673	5,458	18,840	24,298.00	Brine+Main Steam	24298
04 Jul 2018	19,230	5,467	18,850	24,317.00	Brine+Main Steam	24317
05 Jul 2018	18,213	5,485	18,840	24,325.00	Brine+Main Steam	24325
06 Jul 2018	18,194	5,526	18,850	24,376.00	Brine+Main Steam	24376
07 Jul 2018	17,079	5,457	18,840	24,297.00	Brine+Main Steam	24297
08 Jul 2018	17,943	5,474	18,850	24,324.00	Brine+Main Steam	24324
09 Jul 2018	14,532	5,429	18,840	24,269.00	Brine+Main Steam	24269
10 Jul 2018	18,296	5,446	18,850	24,296.00	Brine+Main Steam	24296
11 Jul 2018	18,272	5,435	18,840	24,275.00	Brine+Main Steam	24293
12 Jul 2018	18,343	5,391	18,850	24,241.00	Brine+Main Steam	24291
13 Jul 2018	17,374	5,502	18,850	24,352.00	Brine+Main Steam	24352
14 Jul 2018	17,374	5,502	18,850	24,352.00	Brine+Main Steam	24352
15 Jul 2018	17,515	5,401	18,850	24,251.00	Brine+Main Steam	24251

Date	M _{so,i,y}	M _{sb,y}	M _{sv,y}	M _{sb,y} + M _{sv,y}	M _{s,conservative}	M _s
	Wells	Brine	Main steam	Brine+Main Steam	Wells/Brine+Main Steam	Tons
16 Jul 2018	18,480	5,352	18,840	24,192.00	Brine+Main Steam	24192
17 Jul 2018	17,959	5,365	18,850	24,215.00	Brine+Main Steam	24215
18 Jul 2018	18,469	5,337	18,100	23,437.00	Brine+Main Steam	23437
19 Jul 2018	18,803	5,319	17,960	23,279.00	Brine+Main Steam	23279
20 Jul 2018	17,301	5,355	18,840	24,195.00	Brine+Main Steam	24195
21 Jul 2018	17,798	5,298	18,850	24,148.00	Brine+Main Steam	24148
22 Jul 2018	17,896	5,319	18,840	24,159.00	Brine+Main Steam	24159
23 Jul 2018	17,152	5,308	18,850	24,158.00	Brine+Main Steam	24158
24 Jul 2018	17,334	5,279	18,840	24,119.00	Brine+Main Steam	24119
25 Jul 2018	17,145	5,257	18,850	24,107.00	Brine+Main Steam	24107
26 Jul 2018	17,037	5,287	18,850	24,137.00	Brine+Main Steam	24137
27 Jul 2018	17,433	5,349	18,840	24,189.00	Brine+Main Steam	24189
28 Jul 2018	18,057	5,329	18,850	24,179.00	Brine+Main Steam	24179
29 Jul 2018	17,957	5,321	18,840	24,161.00	Brine+Main Steam	24161
30 Jul 2018	17,901	5,273	18,850	24,123.00	Brine+Main Steam	24123
31 Jul 2018	18,023	5,427	18,840	24,267.00	Brine+Main Steam	24267
01 Aug 2018	17,920	5,371	18,850	24,221.00	Brine+Main Steam	24221
02 Aug 2018	18,595	5,381	18,850	24,231.00	Brine+Main Steam	24231
03 Aug 2018	18,426	5,349	18,840	24,189.00	Brine+Main Steam	24189
04 Aug 2018	18,510	5,345	18,850	24,195.00	Brine+Main Steam	24195
05 Aug 2018	18,239	5,351	18,840	24,191.00	Brine+Main Steam	24191
06 Aug 2018	18,112	5,344	18,850	24,194.00	Brine+Main Steam	24194
07 Aug 2018	18,662	5,331	18,840	24,171.00	Brine+Main Steam	24171
08 Aug 2018	19,429	5,293	18,850	24,143.00	Brine+Main Steam	24143
09 Aug 2018	18,348	5,294	18,850	24,144.00	Brine+Main Steam	24144
10 Aug 2018	17,643	5,272	18,840	24,112.00	Brine+Main Steam	24112
11 Aug 2018	16,940	5,369	18,850	24,219.00	Brine+Main Steam	24219
12 Aug 2018	18,620	5,345	18,840	24,185.00	Brine+Main Steam	24185

Date	Mso,i,y	Msb,y	Msv,y	Msb,y + Msv,y	M _{s,conservative}	M _s
	Wells	Brine	Main steam	Brine+Main Steam	Wells/Brine+Main Steam	Tons
13 Aug 2018	18,903	5,278	18,850	24,128.00	Brine+Main Steam	24128
14 Aug 2018	18,559	5,371	18,840	24,211.00	Brine+Main Steam	24211
15 Aug 2018	19,086	5,454	18,850	24,304.00	Brine+Main Steam	24304
16 Aug 2018	18,865	5,706	18,840	24,546.00	Brine+Main Steam	24546
17 Aug 2018	17,229	5,260	18,840	24,100.00	Brine+Main Steam	24100
18 Aug 2018	17,245	5,035	18,850	23,885.00	Brine+Main Steam	23885
19 Aug 2018	18,595	5,090	18,840	23,930.00	Brine+Main Steam	23930
20 Aug 2018	19,216	5,103	18,850	23,953.00	Brine+Main Steam	23953
21 Aug 2018	19,358	5,145	18,840	23,985.00	Brine+Main Steam	23985
22 Aug 2018	18,953	5,102	18,850	23,952.00	Brine+Main Steam	23952
23 Aug 2018	18,283	5,110	18,840	23,950.00	Brine+Main Steam	23950
24 Aug 2018	18,486	5,105	18,850	23,955.00	Brine+Main Steam	23955
25 Aug 2018	18,333	5,063	18,850	23,913.00	Brine+Main Steam	23913
26 Aug 2018	18,267	5,106	18,840	23,946.00	Brine+Main Steam	23946
27 Aug 2018	18,210	5,116	18,850	23,966.00	Brine+Main Steam	23966
28 Aug 2018	18,169	5,147	18,840	23,987.00	Brine+Main Steam	23987
29 Aug 2018	18,151	5,121	18,850	23,971.00	Brine+Main Steam	23971
30 Aug 2018	18,606	5,090	18,840	23,930.00	Brine+Main Steam	23930
31 Aug 2018	18,544	5,086	18,850	23,936.00	Brine+Main Steam	23936
01 Sep 2018	18,306	4,981	18,840	23,821.00	Brine+Main Steam	23821
02 Sep 2018	18,229	4,993	18,850	23,843.00	Brine+Main Steam	23843
03 Sep 2018	19,259	4,912	18,850	23,762.00	Brine+Main Steam	23762
04 Sep 2018	19,139	4,918	18,840	23,758.00	Brine+Main Steam	23758
05 Sep 2018	18,803	5,133	18,850	23,983.00	Brine+Main Steam	23983
06 Sep 2018	18,722	5,095	18,840	23,935.00	Brine+Main Steam	23935
07 Sep 2018	18,677	5,077	18,850	23,927.00	Brine+Main Steam	23927
08 Sep 2018	18,338	5,082	18,840	23,922.00	Brine+Main Steam	23922
09 Sep 2018	17,887	5,047	18,850	23,897.00	Brine+Main Steam	23897

Date	Mso,i,y	Msb,y	Msv,y	Msb,y + Msv,y	M _{s,conservative}	M _s
	Wells	Brine	Main steam	Brine+Main Steam	Wells/Brine+Main Steam	Tons
10 Sep 2018	18,453	4,987	18,850	23,837.00	Brine+Main Steam	23837
11 Sep 2018	17,694	5,039	18,840	23,879.00	Brine+Main Steam	23879
12 Sep 2018	18,488	5,028	18,850	23,878.00	Brine+Main Steam	23878
13 Sep 2018	18,578	5,055	18,840	23,895.00	Brine+Main Steam	23895
14 Sep 2018	18,136	5,044	18,850	23,894.00	Brine+Main Steam	23894
15 Sep 2018	17,598	5,015	18,840	23,855.00	Brine+Main Steam	23855
16 Sep 2018	18,524	5,004	18,850	23,854.00	Brine+Main Steam	23854
17 Sep 2018	18,907	4,950	18,840	23,790.00	Brine+Main Steam	23790
18 Sep 2018	19,003	4,921	18,840	23,761.00	Brine+Main Steam	23761
19 Sep 2018	18,904	4,954	18,850	23,804.00	Brine+Main Steam	23804
20 Sep 2018	19,204	4,944	18,840	23,784.00	Brine+Main Steam	23784
21 Sep 2018	19,213	4,941	18,850	23,791.00	Brine+Main Steam	23791
22 Sep 2018	18,657	4,932	18,840	23,772.00	Brine+Main Steam	23772
23 Sep 2018	17,817	4,964	18,850	23,814.00	Brine+Main Steam	23814
24 Sep 2018	18,726	4,726	18,840	23,566.00	Brine+Main Steam	23566
25 Sep 2018	19,128	4,881	18,850	23,731.00	Brine+Main Steam	23731
26 Sep 2018	18,849	4,894	18,850	23,744.00	Brine+Main Steam	23744
27 Sep 2018	19,109	4,874	18,840	23,714.00	Brine+Main Steam	23714
28 Sep 2018	19,409	4,925	18,850	23,775.00	Brine+Main Steam	23775
29 Sep 2018	18,984	4,891	18,840	23,731.00	Brine+Main Steam	23731
30 Sep 2018	18,459	4,938	18,850	23,788.00	Brine+Main Steam	23788
01 Oct 2018	18,857	4,911	18,840	23,751.00	Brine+Main Steam	23751
02 Oct 2018	19,122	4,911	18,850	23,761.00	Brine+Main Steam	23761
03 Oct 2018	19,161	4,922	18,840	23,762.00	Brine+Main Steam	23762
04 Oct 2018	19,125	4,899	18,840	23,739.00	Brine+Main Steam	23739
05 Oct 2018	18,624	4,806	18,850	23,656.00	Brine+Main Steam	23656
06 Oct 2018	18,314	4,813	18,840	23,653.00	Brine+Main Steam	23653
07 Oct 2018	18,322	4,817	18,850	23,667.00	Brine+Main Steam	23667

Date	Mso,i,y	Msb,y	Msv,y	Msb,y + Msv,y	M _{s,conservative}	M _s
	Wells	Brine	Main steam	Brine+Main Steam	Wells/Brine+Main Steam	Tons
08 Oct 2018	18,545	4,806	18,840	23,646.00	Brine+Main Steam	23646
09 Oct 2018	18,648	4,774	18,850	23,624.00	Brine+Main Steam	23624
10 Oct 2018	18,627	4,755	18,840	23,595.00	Brine+Main Steam	23595
11 Oct 2018	18,783	4,730	18,850	23,580.00	Brine+Main Steam	23580
12 Oct 2018	18,342	4,714	18,850	23,564.00	Brine+Main Steam	23564
13 Oct 2018	18,095	4,710	18,840	23,550.00	Brine+Main Steam	23550
14 Oct 2018	17,783	4,694	18,850	23,544.00	Brine+Main Steam	23544
15 Oct 2018	18,375	4,344	18,840	23,184.00	Brine+Main Steam	23184
16 Oct 2018	18,291	4,506	18,850	23,356.00	Brine+Main Steam	23356
17 Oct 2018	18,223	4,375	18,840	23,215.00	Brine+Main Steam	23215
18 Oct 2018	16,508	4,448	18,850	23,298.00	Brine+Main Steam	23298
19 Oct 2018	16,602	4,467	18,850	23,317.00	Brine+Main Steam	23317
20 Oct 2018	16,443	4,464	18,840	23,304.00	Brine+Main Steam	23304
21 Oct 2018	16,222	4,458	18,850	23,308.00	Brine+Main Steam	23308
22 Oct 2018	16,703	4,473	18,840	23,313.00	Brine+Main Steam	23313
23 Oct 2018	16,633	4,621	18,850	23,471.00	Brine+Main Steam	23471
24 Oct 2018	16,738	4,587	18,840	23,427.00	Brine+Main Steam	23427
25 Oct 2018	16,729	4,186	18,850	23,036.00	Brine+Main Steam	23036
26 Oct 2018	16,787	4,103	18,840	22,943.00	Brine+Main Steam	22943
27 Oct 2018	16,771	4,184	18,850	23,034.00	Brine+Main Steam	23034
28 Oct 2018	16,719	4,720	18,740	23,460.00	Brine+Main Steam	23460
29 Oct 2018	18,265	4,541	18,850	23,391.00	Brine+Main Steam	23391
30 Oct 2018	18,979	4,284	18,840	23,124.00	Brine+Main Steam	23124
31 Oct 2018	18,742	4,303	18,850	23,153.00	Brine+Main Steam	23153
01 Nov 2018	18,288	4,384	18,850	23,234.00	Brine+Main Steam	23234
02 Nov 2018	18,197	4,389	18,840	23,229.00	Brine+Main Steam	23229
03 Nov 2018	18,226	4,390	18,850	23,240.00	Brine+Main Steam	23240
04 Nov 2018	18,194	4,360	18,840	23,200.00	Brine+Main Steam	23200

Date	Mso,i,y	Msb,y	Msv,y	Msb,y + Msv,y	M _{s,conservative}	M _s
	Wells	Brine	Main steam	Brine+Main Steam	Wells/Brine+Main Steam	Tons
05 Nov 2018	18,443	4,497	18,850	23,347.00	Brine+Main Steam	23347
06 Nov 2018	18,496	4,493	18,840	23,333.00	Brine+Main Steam	23333
07 Nov 2018	18,511	4,514	18,850	23,364.00	Brine+Main Steam	23364
08 Nov 2018	18,078	4,514	18,840	23,354.00	Brine+Main Steam	23354
09 Nov 2018	18,023	4,494	18,840	23,334.00	Brine+Main Steam	23334.00
10 Nov 2018	18,027	4,475	18,850	23,325.00	Brine+Main Steam	23325.00
11 Nov 2018	18,010	4,505	18,840	23,345.00	Brine+Main Steam	23345.00
12 Nov 2018	17,925	4,483	18,850	23,333.00	Brine+Main Steam	23333.00
13 Nov 2018	18,010	4,504	18,840	23,344.00	Brine+Main Steam	23344.00
14 Nov 2018	18,000	4,555	18,850	23,405.00	Brine+Main Steam	23405.00
15 Nov 2018	18,187	4,349	18,846	23,195.25	Brine+Main Steam	23195.25
16 Nov 2018	18,345	4,687	18,846	23,532.50	Brine+Main Steam	23532.50
17 Nov 2018	18,084	4,533	18,844	23,376.50	Brine+Main Steam	23376.50
18 Nov 2018	18,084	4,533	18,844	23,376.50	Brine+Main Steam	23376.50
19 Nov 2018	18,084	4,533	18,844	23,376.50	Brine+Main Steam	23376.50
20 Nov 2018	18,084	4,533	18,844	23,376.50	Brine+Main Steam	23376.50
21 Nov 2018	18,326	4,711	18,846	23,556.75	Brine+Main Steam	23556.75
22 Nov 2018	18,187	4,683	18,844	23,526.50	Brine+Main Steam	23526.50
23 Nov 2018	17,885	4,705	18,846	23,550.50	Brine+Main Steam	23550.50
24 Nov 2018	17,864	4,692	18,846	23,537.75	Brine+Main Steam	23537.75
25 Nov 2018	18,045	4,734	18,846	23,579.75	Brine+Main Steam	23579.75
26 Nov 2018	17,433	4,874	18,668	23,541.50	Brine+Main Steam	23541.50
27 Nov 2018	18,082	4,842	19,024	23,865.50	Brine+Main Steam	23865.50
28 Nov 2018	17,869	4,695	18,846	23,540.75	Brine+Main Steam	23540.75
29 Nov 2018	17,978	4,777	18,844	23,620.50	Brine+Main Steam	23620.50
30 Nov 2018	18,164	4,674	18,846	23,520.00	Brine+Main Steam	23520.00
01 Dec 2018	18,288	4,697	18,850	23,547.25	Brine+Main Steam	23547.25
02 Dec 2018	18,197	4,698	18,840	23,537.50	Brine+Main Steam	23537.50

Date	Mso,i,y	Msb,y	Msv,y	Msb,y + Msv,y	M _{s,conservative}	M _s
	Wells	Brine	Main steam	Brine+Main Steam	Wells/Brine+Main Steam	Tons
03 Dec 2018	18,226	-	18,850	18,850.00	Brine+Main Steam	18850.00
04 Dec 2018	18,194	-	18,840	18,840.00	Brine+Main Steam	18840.00
05 Dec 2018	18,443	-	18,850	18,850.00	Brine+Main Steam	18850.00
06 Dec 2018	18,496	-	18,840	18,840.00	Brine+Main Steam	18840.00
07 Dec 2018	18,511	-	18,850	18,850.00	Brine+Main Steam	18850.00
08 Dec 2018	18,078	-	18,840	18,840.00	Brine+Main Steam	18840.00
09 Dec 2018	18,023	-	18,840	18,840.00	Brine+Main Steam	18840.00
10 Dec 2018	18,027	-	18,850	18,850.00	Brine+Main Steam	18850.00
11 Dec 2018	18,010	-	18,840	18,840.00	Brine+Main Steam	18840.00
12 Dec 2018	17,925	-	18,850	18,850.00	Brine+Main Steam	18850.00
13 Dec 2018	16,840	-	18,840	18,840.00	Brine+Main Steam	18840.00
14 Dec 2018	15,236	-	18,850	18,850.00	Brine+Main Steam	18850.00
15 Dec 2018	18,187	-	18,846	18,846.00	Brine+Main Steam	18846.00
16 Dec 2018	18,345	-	18,846	18,846.00	Brine+Main Steam	18846.00
17 Dec 2018	18,084	-	18,844	18,844.00	Brine+Main Steam	18844.00
18 Dec 2018	18,345	70,166	18,846	89,011.75	Brine+Main Steam	89011.75
19 Dec 2018	18,172	4,925	2,557	7,481.44	Brine+Main Steam	18171.80
20 Dec 2018	18,156	4,914	2,546	7,459.56	Brine+Main Steam	18155.72
21 Dec 2018	18,140	4,840	2,538	7,377.56	Brine+Main Steam	18140.48
22 Dec 2018	17,493	4,791	2,530	7,320.50	Brine+Main Steam	17492.97
23 Dec 2018	17,519	4,551	2,530	7,080.38	Brine+Main Steam	17519.48
24 Dec 2018	17,322	4,396	2,543	6,938.31	Brine+Main Steam	17321.78
25 Dec 2018	17,557	4,762	2,534	7,296.44	Brine+Main Steam	17557.36
26 Dec 2018	17,526	5,107	2,559	7,666.44	Brine+Main Steam	17525.91
27 Dec 2018	17,442	5,098	2,562	7,659.63	Brine+Main Steam	17442.08
28 Dec 2018	17,382	5,538	2,581	8,118.63	Brine+Main Steam	17382.00
29 Dec 2018	18,559	5,164	2,550	7,714.50	Brine+Main Steam	18559.47
30 Dec 2018	18,369	5,012	2,537	7,548.94	Brine+Main Steam	18368.95

Date	Mso,i,y	Msb,y	Msv,y	Msb,y + Msv,y	M _{s,conservative}	M _s
	Wells	Brine	Main steam	Brine+Main Steam	Wells/Brine+Main Steam	Tons
31 Dec 2018	18,365	5,003	18,844	23,846.50	Brine+Main Steam	23846.50
01 Jan 2019	18,303	4,993	18,846	23,838.50	Brine+Main Steam	23838.50
02 Jan 2019	18,332	5,408	18,846	24,254.25	Brine+Main Steam	24254.25
03 Jan 2019	18,437	5,288	18,844	24,131.75	Brine+Main Steam	24131.75
04 Jan 2019	18,456	5,199	18,846	24,045.25	Brine+Main Steam	24045.25
05 Jan 2019	17,512	5,016	18,846	23,861.50	Brine+Main Steam	23861.50
06 Jan 2019	17,463	4,953	18,846	23,799.00	Brine+Main Steam	23799.00
07 Jan 2019	16,795	4,973	18,846	23,818.50	Brine+Main Steam	23818.50
08 Jan 2019	16,655	4,919	18,846	23,764.50	Brine+Main Steam	23764.50
09 Jan 2019	16,476	5,016	18,844	23,860.25	Brine+Main Steam	23860.25
10 Jan 2019	16,425	4,967	18,846	23,812.50	Brine+Main Steam	23812.50
11 Jan 2019	15,992	4,964	18,846	23,809.50	Brine+Main Steam	23809.50
12 Jan 2019	15,690	4,916	18,846	23,762.25	Brine+Main Steam	23762.25
13 Jan 2019	15,204	5,077	18,846	23,922.50	Brine+Main Steam	23922.50
14 Jan 2019	15,385	4,906	18,844	23,749.50	Brine+Main Steam	23749.50
15 Jan 2019	15,325	4,978	18,844	23,821.50	Brine+Main Steam	23821.50
16 Jan 2019	15,264	4,994	18,846	23,840.25	Brine+Main Steam	23840.25
17 Jan 2019	15,502	5,030	18,846	23,876.00	Brine+Main Steam	23876.00
18 Jan 2019	17,020	5,027	18,846	23,872.75	Brine+Main Steam	23872.75
19 Jan 2019	17,273	5,009	18,846	23,855.00	Brine+Main Steam	23855.00
20 Jan 2019	17,210	5,008	18,846	23,854.00	Brine+Main Steam	23854.00
21 Jan 2019	17,378	4,986	18,824	23,810.25	Brine+Main Steam	23810.25
22 Jan 2019	18,136	5,001	18,846	23,846.75	Brine+Main Steam	23846.75
23 Jan 2019	17,607	4,993	18,846	23,839.00	Brine+Main Steam	23839.00
24 Jan 2019	17,734	4,971	18,844	23,815.00	Brine+Main Steam	23815.00
25 Jan 2019	16,280	4,951	18,846	23,796.75	Brine+Main Steam	23796.75
26 Jan 2019	15,340	4,941	18,846	23,786.75	Brine+Main Steam	23786.75
27 Jan 2019	15,349	4,390	18,846	23,236.25	Brine+Main Steam	23236.25

Date	Mso,i,y	Msb,y	Msv,y	Msb,y + Msv,y	M _{s,conservative}	M _s
	Wells	Brine	Main steam	Brine+Main Steam	Wells/Brine+Main Steam	Tons
28 Jan 2019	15,580	3,767	18,844	22,611.00	Brine+Main Steam	22611.00
29 Jan 2019	16,548	3,736	18,846	22,582.00	Brine+Main Steam	22582.00
30 Jan 2019	17,662	3,483	18,846	22,329.00	Brine+Main Steam	22329.00
31 Jan 2019	17,246	3,534	18,846	22,380.25	Brine+Main Steam	22380.25
01 Feb 2019	16,194	3,586	18,844	22,430.25	Wells	22430.25
02 Feb 2019	16,094	3,600	18,846	22,446.00	Brine+Main Steam	22446.00
03 Feb 2019	16,636	3,538	18,846	22,384.00	Brine+Main Steam	22384.00
04 Feb 2019	16,225	3,556	18,820	22,375.50	Brine+Main Steam	22375.50
05 Feb 2019	16,564	3,519	18,846	22,364.50	Brine+Main Steam	22364.50
06 Feb 2019	16,038	3,561	18,844	22,405.00	Brine+Main Steam	22405.00
07 Feb 2019	16,140	3,549	18,846	22,394.50	Brine+Main Steam	22394.50
08 Feb 2019	16,048	3,570	18,846	22,416.25	Brine+Main Steam	22416.25
09 Feb 2019	16,098	3,508	18,846	22,353.75	Brine+Main Steam	22353.75
10 Feb 2019	15,876	3,533	18,846	22,378.50	Brine+Main Steam	22378.50
11 Feb 2019	16,002	3,508	18,822	22,330.00	Brine+Main Steam	22330.00
12 Feb 2019	16,039	3,849	18,846	22,694.50	Brine+Main Steam	22694.50
13 Feb 2019	17,088	3,351	18,846	22,197.25	Brine+Main Steam	22197.25
14 Feb 2019	17,146	3,127	18,846	21,973.00	Brine+Main Steam	21973.00
15 Feb 2019	17,119	3,080	18,848	21,928.00	Brine+Main Steam	21928.00
16 Feb 2019	17,112	3,138	18,840	21,978.00	Brine+Main Steam	21978.00
17 Feb 2019	17,053	3,140	18,850	21,990.00	Brine+Main Steam	21990.00
18 Feb 2019	16,729	3,301	18,810	22,111.00	Brine+Main Steam	22111.00
19 Feb 2019	16,429	3,248	18,850	22,098.00	Brine+Main Steam	22098.00
20 Feb 2019	15,996	3,374	18,846	22,219.75	Brine+Main Steam	22219.75
21 Feb 2019	15,960	3,459	18,846	22,305.00	Brine+Main Steam	22305.00
22 Feb 2019	15,659	3,372	18,844	22,216.00	Brine+Main Steam	22216.00
23 Feb 2019	16,099	3,316	18,846	22,162.00	Brine+Main Steam	22162.00
24 Feb 2019	15,975	3,259	18,846	22,105.00	Brine+Main Steam	22105.00

Date	Mso,i,y	Msb,y	Msv,y	Msb,y + Msv,y	M _{s,conservative}	M _s
	Wells	Brine	Main steam	Brine+Main Steam	Wells/Brine+Main Steam	Tons
25 Feb 2019	16,168	3,118	18,844	21,961.50	Brine+Main Steam	21961.50
26 Feb 2019	16,371	3,388	18,846	22,233.75	Brine+Main Steam	22233.75
27 Feb 2019	16,004	3,248	18,844	22,092.00	Brine+Main Steam	22092.00
28 Feb 2019	16,758	3,343	18,846	22,189.25	Brine+Main Steam	22189.25
01 Mar 2019	18,021	3,479	18,846	22,325.25	Brine+Main Steam	22325.25
02 Mar 2019	18,055	3,594	18,846	22,440.00	Brine+Main Steam	22440.00
03 Mar 2019	17,845	3,692	18,846	22,538.25	Brine+Main Steam	22538.25
04 Mar 2019	16,855	3,524	18,842	22,366.00	Brine+Main Steam	22366.00
05 Mar 2019	16,952	3,709	18,846	22,554.50	Brine+Main Steam	22554.50
06 Mar 2019	16,950	3,798	18,846	22,644.00	Brine+Main Steam	22644.00
07 Mar 2019	17,081	3,760	18,846	22,606.00	Brine+Main Steam	22606.00
08 Mar 2019	18,044	3,760	18,846	22,606.00	Brine+Main Steam	22606.00
09 Mar 2019	17,956	3,841	18,846	22,687.00	Brine+Main Steam	22687.00
10 Mar 2019	17,411	3,839	18,844	22,683.00	Brine+Main Steam	22683.00
11 Mar 2019	17,299	4,200	18,822	23,022.00	Brine+Main Steam	23022.00
12 Mar 2019	17,302	4,274	18,844	23,117.50	Brine+Main Steam	23117.50
13 Mar 2019	16,448	4,219	18,846	23,065.00	Brine+Main Steam	23065.00
14 Mar 2019	16,508	4,334	18,846	23,180.00	Brine+Main Steam	23180.00
15 Mar 2019	15,445	4,417	18,846	23,263.00	Brine+Main Steam	23263.00
16 Mar 2019	15,484	4,327	18,846	23,173.00	Brine+Main Steam	23173.00
17 Mar 2019	15,438	4,329	18,850	23,179.00	Brine+Main Steam	23179.00
18 Mar 2019	15,867	4,282	18,840	23,122.00	Brine+Main Steam	23122.00
19 Mar 2019	15,507	4,237	18,840	23,077.00	Brine+Main Steam	23077.00
20 Mar 2019	15,667	4,189	18,846	23,035.00	Brine+Main Steam	23035.00
21 Mar 2019	15,516	4,215	18,846	23,061.00	Brine+Main Steam	23061.00
22 Mar 2019	15,690	4,201	18,844	23,045.00	Brine+Main Steam	23045.00
23 Mar 2019	15,487	4,197	18,846	23,043.00	Brine+Main Steam	23043.00
24 Mar 2019	32,049	2,477	2,532	5,008.54	Brine+Main Steam	32049.09

Date	Mso,i,y	Msb,y	Msv,y	Msb,y + Msv,y	M _{s,conservative}	M _s
	Wells	Brine	Main steam	Brine+Main Steam	Wells/Brine+Main Steam	Tons
25 Mar 2019	15,386	4,144	18,846	22,990.00	Brine+Main Steam	22990.00
26 Mar 2019	15,530	4,188	18,842	23,029.50	Brine+Main Steam	23029.50
27 Mar 2019	15,690	4,227	18,850	23,077.00	Brine+Main Steam	23077.00
28 Mar 2019	15,420	4,089	18,840	22,929.00	Brine+Main Steam	22929.00
29 Mar 2019	15,398	4,077	18,850	22,927.00	Brine+Main Steam	22927.00
30 Mar 2019	15,164	3,703	18,850	22,553.00	Brine+Main Steam	22553.00
31 Mar 2019	16,528	2,170	18,840	21,010.00	Brine+Main Steam	21010.00
01 Apr 2019	16,755	1,204	18,846	20,049.50	Brine+Main Steam	20049.50
02 Apr 2019	16,755	1,204	18,846	20,049.50	Brine+Main Steam	20049.50
03 Apr 2019	16,520	1,235	18,846	20,081.00	Brine+Main Steam	20081.00
04 Apr 2019	16,615	1,252	18,846	20,098.00	Brine+Main Steam	20098.00
05 Apr 2019	16,663	1,258	18,846	20,103.50	Brine+Main Steam	20103.50
06 Apr 2019	16,344	1,195	18,846	20,040.50	Brine+Main Steam	20040.50
07 Apr 2019	16,546	1,211	18,844	20,054.50	Brine+Main Steam	20054.50
08 Apr 2019	17,279	1,187	18,844	20,031.00	Brine+Main Steam	20031.00
09 Apr 2019	17,192	1,214	18,846	20,060.00	Brine+Main Steam	20060.00
10 Apr 2019	16,962	1,301	18,846	20,147.00	Brine+Main Steam	20147.00
11 Apr 2019	16,939	1,219	18,846	20,064.50	Brine+Main Steam	20064.50
12 Apr 2019	17,117	1,189	18,844	20,032.50	Brine+Main Steam	20032.50
13 Apr 2019	16,917	1,172	18,846	20,018.00	Brine+Main Steam	20018.00
14 Apr 2019	17,165	1,136	18,850	19,986.00	Brine+Main Steam	19986.00
15 Apr 2019	17,055	1,138	18,840	19,978.00	Brine+Main Steam	19978.00
16 Apr 2019	17,129	1,161	18,850	20,011.00	Brine+Main Steam	20011.00
17 Apr 2019	17,229	1,079	18,840	19,919.00	Brine+Main Steam	19919.00
18 Apr 2019	17,187	31	18,850	18,881.00	Brine+Main Steam	18881.00
19 Apr 2019	17,155	79	18,840	18,919.00	Brine+Main Steam	18919.00
20 Apr 2019	17,145	80	18,850	18,930.00	Brine+Main Steam	18930.00
21 Apr 2019	16,989	71	18,850	18,921.00	Brine+Main Steam	18921.00

Date	Mso,i,y	Msb,y	Msv,y	Msb,y + Msv,y	M _{s,conservative}	M _s
	Wells	Brine	Main steam	Brine+Main Steam	Wells/Brine+Main Steam	Tons
22 Apr 2019	16,870	22	18,840	18,862.00	Brine+Main Steam	18862.00
23 Apr 2019	17,068	171	18,850	19,021.00	Brine+Main Steam	19021.00
24 Apr 2019	17,039	280	18,840	19,120.00	Brine+Main Steam	19120.00
25 Apr 2019	16,665	2,675	18,850	21,525.00	Brine+Main Steam	21525.00
26 Apr 2019	17,512	3,358	18,840	22,198.00	Brine+Main Steam	22198.00
27 Apr 2019	17,554	3,490	18,850	22,340.00	Brine+Main Steam	22340.00
28 Apr 2019	17,640	3,693	18,850	22,543.00	Brine+Main Steam	22543.00
29 Apr 2019	17,772	3,768	18,840	22,608.00	Brine+Main Steam	22608.00
30 Apr 2019	17,784	3,813	18,850	22,663.00	Brine+Main Steam	22663.00
01 May 2019	17,792	3,835	18,840	22,675.00	Brine+Main Steam	22675.00
02 May 2019	17,876	3,794	18,850	22,644.00	Brine+Main Steam	22644.00
03 May 2019	17,809	3,808	18,840	22,648.00	Brine+Main Steam	22648.00
04 May 2019	17,420	3,817	18,850	22,667.00	Brine+Main Steam	22667.00
05 May 2019	17,389	3,887	18,840	22,727.00	Brine+Main Steam	22727.00
06 May 2019	17,391	3,813	18,850	22,663.00	Brine+Main Steam	22663.00
07 May 2019	17,455	3,827	18,840	22,667.00	Brine+Main Steam	22667.00
08 May 2019	17,622	3,854	18,850	22,704.00	Brine+Main Steam	22704.00
09 May 2019	17,687	3,861	18,840	22,701.00	Brine+Main Steam	22701.00
10 May 2019	17,435	3,843	18,850	22,693.00	Brine+Main Steam	22693.00
11 May 2019	17,259	3,837	18,850	22,687.00	Brine+Main Steam	22687.00
12 May 2019	17,428	3,859	18,840	22,699.00	Brine+Main Steam	22699.00
13 May 2019	17,452	3,778	18,840	22,618.00	Brine+Main Steam	22618.00
14 May 2019	17,562	3,796	18,850	22,646.00	Brine+Main Steam	22646.00
15 May 2019	17,645	3,909	18,840	22,749.00	Brine+Main Steam	22749.00
16 May 2019	17,645	3,740	18,850	22,590.00	Brine+Main Steam	22590.00
17 May 2019	16,774	3,783	7,880	11,663.00	Brine+Main Steam	16774.34
18 May 2019	17,873	3,682	18,840	22,522.00	Brine+Main Steam	22522.00
19 May 2019	17,767	3,741	18,850	22,591.00	Brine+Main Steam	22591.00

Date	Mso,i,y	Msb,y	Msv,y	Msb,y + Msv,y	M _{s,conservative}	M _s
	Wells	Brine	Main steam	Brine+Main Steam	Wells/Brine+Main Steam	Tons
20 May 2019	17,536	3,703	18,840	22,543.00	Brine+Main Steam	22543.00
21 May 2019	17,870	3,732	18,850	22,582.00	Brine+Main Steam	22582.00
22 May 2019	17,613	3,711	18,840	22,551.00	Brine+Main Steam	22551.00
23 May 2019	17,593	3,757	18,850	22,607.00	Brine+Main Steam	22607.00
24 May 2019	17,464	3,681	18,850	22,531.00	Brine+Main Steam	22531.00
25 May 2019	17,576	3,691	18,840	22,531.00	Brine+Main Steam	22531.00
26 May 2019	17,415	3,692	18,850	22,542.00	Brine+Main Steam	22542.00
27 May 2019	14,103	3,717	18,820	22,537.00	Brine+Main Steam	22537.00
28 May 2019	17,601	3,706	18,840	22,546.00	Brine+Main Steam	22546.00
29 May 2019	16,907	3,746	18,850	22,596.00	Brine+Main Steam	22596.00
30 May 2019	16,917	3,724	18,840	22,564.00	Brine+Main Steam	22564.00
31 May 2019	17,509	3,690	18,850	22,540.00	Brine+Main Steam	22540.00
01 Jun 2019	17,484	3,704	18,840	22,544.00	Brine+Main Steam	22544.00
02 Jun 2019	17,218	3,717	18,850	22,567.00	Brine+Main Steam	22567.00
03 Jun 2019	17,097	3,686	18,800	22,486.00	Brine+Main Steam	22486.00
04 Jun 2019	17,114	3,700	18,850	22,550.00	Brine+Main Steam	22550.00
05 Jun 2019	17,427	3,681	18,840	22,521.00	Brine+Main Steam	22521.00
06 Jun 2019	17,114	3,657	18,850	22,507.00	Brine+Main Steam	22507.00
07 Jun 2019	17,082	3,663	18,840	22,503.00	Brine+Main Steam	22503.00
08 Jun 2019	16,961	3,652	18,850	22,502.00	Brine+Main Steam	22502.00
09 Jun 2019	16,998	3,636	18,840	22,476.00	Brine+Main Steam	22476.00
10 Jun 2019	17,381	3,606	18,850	22,456.00	Brine+Main Steam	22456.00
11 Jun 2019	17,587	3,673	18,840	22,513.00	Brine+Main Steam	22513.00
12 Jun 2019	17,645	3,708	18,850	22,558.00	Brine+Main Steam	22558.00
13 Jun 2019	17,809	3,661	18,850	22,511.00	Brine+Main Steam	22511.00
14 Jun 2019	17,040	3,653	18,840	22,493.00	Brine+Main Steam	22493.00
15 Jun 2019	16,959	3,650	18,850	22,500.00	Brine+Main Steam	22500.00
16 Jun 2019	16,555	3,653	18,840	22,493.00	Brine+Main Steam	22493.00

Date	Mso,i,y	Msb,y	Msv,y	Msb,y + Msv,y	M _{s,conservative}	M _s
	Wells	Brine	Main steam	Brine+Main Steam	Wells/Brine+Main Steam	Tons
17 Jun 2019	17,231	3,664	18,840	22,504.00	Brine+Main Steam	22504.00
18 Jun 2019	17,407	3,595	18,850	22,445.00	Brine+Main Steam	22445.00
19 Jun 2019	16,969	3,649	18,840	22,489.00	Brine+Main Steam	22489.00
20 Jun 2019	16,239	3,629	18,850	22,479.00	Brine+Main Steam	22479.00
21 Jun 2019	16,285	3,601	18,850	22,451.00	Brine+Main Steam	22451.00
22 Jun 2019	16,050	2,191	18,840	21,031.00	Brine+Main Steam	21031.00
23 Jun 2019	15,560	-	18,846	18,846.00	Brine+Main Steam	18846.00
24 Jun 2019	15,746	-	18,844	18,844.00	Brine+Main Steam	18844.00
25 Jun 2019	-	-	15,200	15,200.00	Brine+Main Steam	15200.00
26 Jun 2019	7,995	-	-	0.00	Brine+Main Steam	7995.28
27 Jun 2019	15,508	-	21,540	21,540.00	Brine+Main Steam	21540.00
28 Jun 2019	15,603	-	21,536	21,536.00	Brine+Main Steam	21536.00
29 Jun 2019	15,627	-	21,538	21,538.00	Brine+Main Steam	21538.00
30 Jun 2019	15,367	-	21,538	21,538.00	Brine+Main Steam	21538.00
01 Jul 2019	15,471	18	21,538	21,555.67	Brine+Main Steam	21555.67
02 Jul 2019	15,493	58	21,538	21,595.91	Brine+Main Steam	21595.91
03 Jul 2019	15,540	2,362	21,538	23,899.91	Brine+Main Steam	23899.91
04 Jul 2019	15,534	3,214	21,538	24,752.35	Brine+Main Steam	24752.35
05 Jul 2019	15,242	3,300	21,538	24,838.43	Brine+Main Steam	24838.43
06 Jul 2019	15,209	3,340	21,538	24,878.49	Brine+Main Steam	24878.49
07 Jul 2019	15,200	3,301	21,536	24,836.86	Brine+Main Steam	24836.86
08 Jul 2019	14,953	3,176	21,538	24,713.68	Brine+Main Steam	24713.68
09 Jul 2019	15,209	3,281	21,538	24,818.54	Brine+Main Steam	24818.54
10 Jul 2019	14,844	3,136	20,460	23,595.51	Brine+Main Steam	23595.51
11 Jul 2019	13,987	3,332	18,846	22,178.13	Brine+Main Steam	22178.13
12 Jul 2019	14,231	3,465	18,846	22,311.33	Brine+Main Steam	22311.33
13 Jul 2019	14,383	3,313	18,846	22,158.89	Brine+Main Steam	22158.89
14 Jul 2019	14,598	3,240	18,844	22,083.57	Brine+Main Steam	22083.57

Date	Mso,i,y	Msb,y	Msv,y	Msb,y + Msv,y	M _{s,conservative}	M _s
	Wells	Brine	Main steam	Brine+Main Steam	Wells/Brine+Main Steam	Tons
15 Jul 2019	14,460	3,335	18,796	22,130.94	Brine+Main Steam	22130.94
16 Jul 2019	15,326	3,210	18,846	22,056.33	Brine+Main Steam	22056.33
17 Jul 2019	13,909	3,303	18,846	22,149.33	Brine+Main Steam	22149.33
18 Jul 2019	13,832	2,861	18,846	21,707.49	Brine+Main Steam	21707.49
19 Jul 2019	13,942	1,057	18,844	19,900.68	Brine+Main Steam	19900.68
20 Jul 2019	13,919	1,313	18,846	20,159.25	Brine+Main Steam	20159.25
21 Jul 2019	14,481	1,315	18,812	20,126.67	Brine+Main Steam	20126.67
22 Jul 2019	14,304	1,393	18,824	20,217.31	Brine+Main Steam	20217.31
23 Jul 2019	14,240	1,356	18,846	20,202.22	Brine+Main Steam	20202.22
24 Jul 2019	14,599	1,347	18,846	20,192.59	Brine+Main Steam	20192.59
25 Jul 2019	14,065	1,335	18,846	20,180.80	Brine+Main Steam	20180.80
26 Jul 2019	13,961	1,341	18,844	20,184.57	Brine+Main Steam	20184.57
27 Jul 2019	14,116	1,358	18,846	20,203.57	Brine+Main Steam	20203.57
28 Jul 2019	14,052	982	18,846	19,828.48	Brine+Main Steam	19828.48
29 Jul 2019	14,273	894	18,840	19,734.46	Brine+Main Steam	19734.46
30 Jul 2019	13,875	1,175	18,844	20,019.46	Brine+Main Steam	20019.46
31 Jul 2019	13,609	880	18,846	19,726.30	Brine+Main Steam	19726.30
01 Aug 2019	12,822	863	18,846	19,708.98	Brine+Main Steam	19708.98
02 Aug 2019	11,646	569	18,846	19,414.86	Brine+Main Steam	19414.86
03 Aug 2019	11,349	350	14,458	14,808.16	Brine+Main Steam	14808.16
04 Aug 2019	10,259	345	17,412	17,757.48	Brine+Main Steam	17757.48
05 Aug 2019	10,588	305	18,844	19,149.41	Brine+Main Steam	19149.41
06 Aug 2019	11,564	654	18,846	19,500.38	Brine+Main Steam	19500.38
07 Aug 2019	11,228	1,044	13,104	14,148.30	Brine+Main Steam	14148.30
08 Aug 2019	11,216	1,173	18,844	20,017.19	Brine+Main Steam	20017.19
09 Aug 2019	11,104	1,211	18,846	20,056.72	Brine+Main Steam	20056.72
10 Aug 2019	11,408	1,234	18,846	20,080.05	Brine+Main Steam	20080.05
11 Aug 2019	10,878	1,383	18,844	20,227.19	Brine+Main Steam	20227.19

Date	Mso,i,y	Msb,y	Msv,y	Msb,y + Msv,y	M _{s,conservative}	M _s
	Wells	Brine	Main steam	Brine+Main Steam	Wells/Brine+Main Steam	Tons
12 Aug 2019	10,762	1,331	18,846	20,176.63	Brine+Main Steam	20176.63
13 Aug 2019	11,552	1,345	18,844	20,189.19	Brine+Main Steam	20189.19
14 Aug 2019	11,929	1,342	18,846	20,188.41	Brine+Main Steam	20188.41
15 Aug 2019	12,175	1,351	18,846	20,196.89	Brine+Main Steam	20196.89
16 Aug 2019	11,761	1,345	18,846	20,191.48	Brine+Main Steam	20191.48
17 Aug 2019	11,690	1,346	18,846	20,191.54	Brine+Main Steam	20191.54
18 Aug 2019	11,890	1,353	18,844	20,196.92	Brine+Main Steam	20196.92
19 Aug 2019	12,248	1,356	18,846	20,202.09	Brine+Main Steam	20202.09
20 Aug 2019	12,230	1,352	18,846	20,198.41	Brine+Main Steam	20198.41
21 Aug 2019	12,384	1,339	18,846	20,184.70	Brine+Main Steam	20184.70
22 Aug 2019	12,885	1,369	18,844	20,213.33	Brine+Main Steam	20213.33
23 Aug 2019	13,431	1,486	18,354	19,840.00	Brine+Main Steam	19840.00
24 Aug 2019	12,845	2,316	18,846	21,162.19	Brine+Main Steam	21162.19
25 Aug 2019	12,885	1,835	18,846	20,680.81	Brine+Main Steam	20680.81
26 Aug 2019	13,517	1,607	18,846	20,452.50	Brine+Main Steam	20452.50
27 Aug 2019	13,420	1,639	18,844	20,483.16	Brine+Main Steam	20483.16
28 Aug 2019	13,339	1,688	18,846	20,533.63	Brine+Main Steam	20533.63
29 Aug 2019	13,440	1,650	18,846	20,496.17	Brine+Main Steam	20496.17
30 Aug 2019	12,916	1,619	18,846	20,465.30	Brine+Main Steam	20465.30
31 Aug 2019	13,264	1,645	18,846	20,490.55	Brine+Main Steam	20490.55
01 Sep 2019	13,507	1,687	18,844	20,530.62	Brine+Main Steam	20530.62
02 Sep 2019	14,114	1,707	18,846	20,552.55	Brine+Main Steam	20552.55
03 Sep 2019	16,596	1,681	18,846	20,526.78	Brine+Main Steam	20526.78
04 Sep 2019	16,580	1,644	18,846	20,489.70	Brine+Main Steam	20489.70
05 Sep 2019	16,538	1,707	18,844	20,550.95	Brine+Main Steam	20550.95
06 Sep 2019	16,396	1,718	18,846	20,563.72	Brine+Main Steam	20563.72
07 Sep 2019	15,874	2,758	18,846	21,603.63	Brine+Main Steam	21603.63
08 Sep 2019	15,775	2,669	18,846	21,515.44	Brine+Main Steam	21515.44

Date	Mso,i,y	Msb,y	Msv,y	Msb,y + Msv,y	M _{s,conservative}	M _s
	Wells	Brine	Main steam	Brine+Main Steam	Wells/Brine+Main Steam	Tons
09 Sep 2019	16,288	2,758	18,844	21,602.09	Brine+Main Steam	21602.09
10 Sep 2019	16,431	2,871	18,846	21,716.70	Brine+Main Steam	21716.70
11 Sep 2019	16,379	2,723	18,846	21,569.02	Brine+Main Steam	21569.02
12 Sep 2019	16,135	2,674	18,846	21,520.34	Brine+Main Steam	21520.34
13 Sep 2019	16,312	2,689	18,844	21,532.66	Brine+Main Steam	21532.66
14 Sep 2019	15,967	2,637	18,846	21,482.53	Brine+Main Steam	21482.53
15 Sep 2019	16,054	2,621	18,846	21,466.78	Brine+Main Steam	21466.78
16 Sep 2019	16,382	2,532	18,810	21,342.30	Brine+Main Steam	21342.30
17 Sep 2019	15,791	2,556	18,846	21,402.45	Brine+Main Steam	21402.45
18 Sep 2019	15,954	2,634	18,846	21,480.31	Brine+Main Steam	21480.31
19 Sep 2019	15,191	2,580	18,844	21,424.08	Brine+Main Steam	21424.08
20 Sep 2019	13,420	2,554	18,846	21,399.83	Brine+Main Steam	21399.83
21 Sep 2019	13,441	2,514	18,846	21,360.25	Brine+Main Steam	21360.25
22 Sep 2019	13,606	2,570	18,846	21,416.00	Brine+Main Steam	21416.00
23 Sep 2019	14,083	2,522	18,842	21,363.89	Brine+Main Steam	21363.89
24 Sep 2019	14,564	2,533	18,846	21,378.63	Brine+Main Steam	21378.63
25 Sep 2019	16,371	2,551	18,846	21,397.31	Brine+Main Steam	21397.31
26 Sep 2019	16,169	2,508	18,846	21,354.19	Brine+Main Steam	21354.19
27 Sep 2019	16,229	2,480	18,844	21,323.95	Brine+Main Steam	21323.95
28 Sep 2019	16,030	2,379	18,846	21,224.78	Brine+Main Steam	21224.78
29 Sep 2019	16,302	2,682	18,846	21,528.28	Brine+Main Steam	21528.28
30 Sep 2019	16,309	2,596	18,838	21,434.05	Brine+Main Steam	21434.05
01 Oct 2019	16,393	2,534	18,846	21,380.14	Brine+Main Steam	21380.14
02 Oct 2019	16,501	2,508	18,846	21,353.59	Brine+Main Steam	21353.59
03 Oct 2019	16,396	2,521	18,846	21,366.69	Brine+Main Steam	21366.69
04 Oct 2019	16,347	2,523	18,846	21,368.89	Brine+Main Steam	21368.89
05 Oct 2019	16,011	2,446	18,844	21,290.17	Brine+Main Steam	21290.17
06 Oct 2019	16,185	2,425	18,846	21,271.45	Brine+Main Steam	21271.45

Date	Mso,i,y	Msb,y	Msv,y	Msb,y + Msv,y	M _{s,conservative}	M _s
	Wells	Brine	Main steam	Brine+Main Steam	Wells/Brine+Main Steam	Tons
07 Oct 2019	16,291	2,445	18,846	21,290.52	Brine+Main Steam	21290.52
08 Oct 2019	16,285	2,786	18,846	21,632.41	Brine+Main Steam	21632.41
09 Oct 2019	16,651	2,728	18,846	21,574.42	Brine+Main Steam	21574.42
10 Oct 2019	16,110	2,614	18,846	21,460.44	Brine+Main Steam	21460.44
11 Oct 2019	15,876	1,970	18,844	20,814.05	Brine+Main Steam	20814.05
12 Oct 2019	16,076	2,569	18,846	21,415.00	Brine+Main Steam	21415.00
13 Oct 2019	15,650	2,469	18,846	21,315.22	Brine+Main Steam	21315.22
14 Oct 2019	16,065	2,302	18,846	21,147.81	Brine+Main Steam	21147.81
15 Oct 2019	16,263	2,332	18,844	21,175.89	Brine+Main Steam	21175.89
16 Oct 2019	15,944	2,568	18,846	21,413.72	Brine+Main Steam	21413.72
17 Oct 2019	15,937	2,599	18,846	21,445.02	Brine+Main Steam	21445.02
18 Oct 2019	15,789	2,614	18,846	21,460.25	Brine+Main Steam	21460.25
19 Oct 2019	15,797	2,592	18,846	21,438.45	Brine+Main Steam	21438.45
20 Oct 2019	16,317	2,636	18,844	21,479.67	Brine+Main Steam	21479.67
21 Oct 2019	16,205	2,504	18,846	21,349.58	Brine+Main Steam	21349.58
22 Oct 2019	16,114	2,672	18,846	21,517.92	Brine+Main Steam	21517.92
23 Oct 2019	16,171	2,648	18,844	21,492.36	Brine+Main Steam	21492.36
24 Oct 2019	16,286	2,507	18,850	21,356.91	Brine+Main Steam	21356.91
25 Oct 2019	15,861	2,349	18,840	21,189.30	Brine+Main Steam	21189.30
26 Oct 2019	15,856	2,177	18,850	21,026.70	Brine+Main Steam	21026.70
27 Oct 2019	15,960	2,243	18,840	21,082.80	Brine+Main Steam	21082.80
28 Oct 2019	16,127	2,415	18,840	21,255.30	Brine+Main Steam	21255.30
29 Oct 2019	16,246	2,359	18,846	21,204.97	Brine+Main Steam	21204.97
30 Oct 2019	16,016	2,344	18,846	21,190.47	Brine+Main Steam	21190.47
31 Oct 2019	16,298	2,353	18,846	21,199.03	Brine+Main Steam	21199.03
01 Nov 2019	16,444	2,353	18,846	21,198.95	Brine+Main Steam	21198.95
02 Nov 2019	15,998	2,342	18,844	21,185.94	Brine+Main Steam	21185.94
03 Nov 2019	16,099	2,333	18,846	21,178.81	Brine+Main Steam	21178.81

Date	Mso,i,y	Msb,y	Msv,y	Msb,y + Msv,y	M _{s,conservative}	M _s
	Wells	Brine	Main steam	Brine+Main Steam	Wells/Brine+Main Steam	Tons
04 Nov 2019	15,671	2,122	18,844	20,966.25	Brine+Main Steam	20966.25
05 Nov 2019	15,665	2,600	18,846	21,446.28	Brine+Main Steam	21446.28
06 Nov 2019	15,120	1,898	18,846	20,744.19	Brine+Main Steam	20744.19
07 Nov 2019	15,777	2,249	18,846	21,094.69	Brine+Main Steam	21094.69
08 Nov 2019	15,914	2,410	18,846	21,256.38	Brine+Main Steam	21256.38
09 Nov 2019	15,774	2,324	18,844	21,168.34	Brine+Main Steam	21168.34
10 Nov 2019	15,569	1,966	18,846	20,812.09	Brine+Main Steam	20812.09
11 Nov 2019	15,754	2,117	18,846	20,962.56	Brine+Main Steam	20962.56
12 Nov 2019	15,622	2,231	18,846	21,077.31	Brine+Main Steam	21077.31
13 Nov 2019	15,725	2,563	18,844	21,406.81	Brine+Main Steam	21406.81
14 Nov 2019	15,711	2,613	18,846	21,459.09	Brine+Main Steam	21459.09
15 Nov 2019	15,827	3,124	18,846	21,970.28	Brine+Main Steam	21970.28
16 Nov 2019	14,881	4,732	18,846	23,578.22	Brine+Main Steam	23578.22
17 Nov 2019	14,894	4,342	18,844	23,185.72	Brine+Main Steam	23185.72
18 Nov 2019	15,064	4,264	18,846	23,110.41	Brine+Main Steam	23110.41
19 Nov 2019	15,375	4,272	18,846	23,117.69	Brine+Main Steam	23117.69
20 Nov 2019	15,790	4,063	18,846	22,908.69	Brine+Main Steam	22908.69
21 Nov 2019	16,002	4,142	18,844	22,986.00	Brine+Main Steam	22986.00
22 Nov 2019	15,909	4,453	18,846	23,298.78	Brine+Main Steam	23298.78
23 Nov 2019	15,508	4,267	18,846	23,112.59	Brine+Main Steam	23112.59
24 Nov 2019	15,649	5,009	18,846	23,854.53	Brine+Main Steam	23854.53
25 Nov 2019	15,446	6,289	18,844	25,132.66	Brine+Main Steam	25132.66
26 Nov 2019	15,962	6,117	18,846	24,963.47	Brine+Main Steam	24963.47
27 Nov 2019	15,941	6,107	18,846	24,953.44	Brine+Main Steam	24953.44
28 Nov 2019	16,039	6,077	18,846	24,923.03	Brine+Main Steam	24923.03
29 Nov 2019	16,011	6,050	18,846	24,896.44	Brine+Main Steam	24896.44
30 Nov 2019	15,429	6,024	18,844	24,867.56	Brine+Main Steam	24867.56
01 Dec 2019	13,581	6,035	18,846	24,880.69	Brine+Main Steam	24880.69

Date	Mso,i,y	Msb,y	Msv,y	Msb,y + Msv,y	M _{s,conservative}	M _s
	Wells	Brine	Main steam	Brine+Main Steam	Wells/Brine+Main Steam	Tons
02 Dec 2019	12,278	6,022	18,846	24,868.03	Brine+Main Steam	24868.03
03 Dec 2019	14,249	6,017	18,846	24,862.81	Brine+Main Steam	24862.81
04 Dec 2019	14,228	6,010	18,846	24,855.88	Brine+Main Steam	24855.88
05 Dec 2019	14,303	6,012	18,844	24,856.38	Brine+Main Steam	24856.38
06 Dec 2019	14,541	6,060	18,846	24,905.63	Brine+Main Steam	24905.63
07 Dec 2019	14,562	6,018	18,846	24,864.34	Brine+Main Steam	24864.34
08 Dec 2019	14,229	6,077	18,846	24,923.25	Brine+Main Steam	24923.25
09 Dec 2019	14,745	5,948	18,846	24,793.50	Brine+Main Steam	24793.50
10 Dec 2019	14,675	5,954	18,848	24,802.38	Brine+Main Steam	24802.38
11 Dec 2019	14,617	5,939	18,846	24,785.31	Brine+Main Steam	24785.31
12 Dec 2019	15,372	5,944	18,848	24,792.19	Brine+Main Steam	24792.19
13 Dec 2019	14,630	5,994	18,846	24,840.31	Brine+Main Steam	24840.31
14 Dec 2019	14,188	5,940	18,848	24,788.00	Brine+Main Steam	24788.00
15 Dec 2019	15,009	5,959	18,848	24,807.28	Brine+Main Steam	24807.28
16 Dec 2019	14,856	6,008	18,846	24,853.91	Brine+Main Steam	24853.91
17 Dec 2019	14,670	5,904	18,834	24,737.88	Brine+Main Steam	24737.88
18 Dec 2019	13,761	5,895	16,980	22,874.69	Brine+Main Steam	22874.69
19 Dec 2019	13,392	5,910	18,848	24,757.53	Brine+Main Steam	24757.53
20 Dec 2019	13,709	5,917	18,848	24,765.44	Brine+Main Steam	24765.44
21 Dec 2019	13,666	5,956	18,846	24,801.84	Brine+Main Steam	24801.84
22 Dec 2019	13,432	5,927	18,848	24,775.00	Brine+Main Steam	24775.00
23 Dec 2019	12,130	5,938	18,846	24,783.84	Brine+Main Steam	24783.84
24 Dec 2019	12,135	5,940	18,848	24,788.44	Brine+Main Steam	24788.44
25 Dec 2019	11,972	5,877	18,834	24,711.09	Brine+Main Steam	24711.09
26 Dec 2019	12,156	5,868	18,848	24,716.22	Brine+Main Steam	24716.22
27 Dec 2019	12,573	5,873	18,846	24,718.75	Brine+Main Steam	24718.75
28 Dec 2019	13,110	5,829	18,848	24,677.00	Brine+Main Steam	24677.00
29 Dec 2019	13,389	5,790	18,848	24,637.94	Brine+Main Steam	24637.94

Date	Mso,i,y	Msb,y	Msv,y	Msb,y + Msv,y	M _{s,conservative}	M _s
	Wells	Brine	Main steam	Brine+Main Steam	Wells/Brine+Main Steam	Tons
30 Dec 2019	13,569	5,831	18,846	24,677.25	Brine+Main Steam	24677.25
31 Dec 2019	13,904	5,723	18,846	24,569.31	Brine+Main Steam	24569.31
01 Jan 2020	14,760	5,635	18,848	24,482.63	Brine+Main Steam	24482.63
02 Jan 2020	14,469	5,631	18,846	24,477.44	Brine+Main Steam	24477.44
03 Jan 2020	14,543	5,623	18,848	24,470.94	Brine+Main Steam	24470.94
04 Jan 2020	13,692	5,627	18,848	24,475.06	Brine+Main Steam	24475.06
05 Jan 2020	12,390	5,606	18,846	24,452.13	Brine+Main Steam	24452.13
06 Jan 2020	13,659	5,631	18,848	24,478.69	Brine+Main Steam	24478.69
07 Jan 2020	13,921	5,478	18,848	24,325.94	Brine+Main Steam	24325.94
08 Jan 2020	13,889	5,098	18,834	23,931.50	Brine+Main Steam	23931.50
09 Jan 2020	14,296	5,118	18,846	23,964.25	Brine+Main Steam	23964.25
10 Jan 2020	14,235	5,183	18,848	24,030.81	Brine+Main Steam	24030.81
11 Jan 2020	14,372	5,232	18,848	24,079.88	Brine+Main Steam	24079.88
12 Jan 2020	13,201	5,142	18,846	23,987.88	Brine+Main Steam	23987.88
13 Jan 2020	13,421	4,980	18,848	23,828.19	Brine+Main Steam	23828.19
14 Jan 2020	13,781	5,145	18,846	23,991.44	Brine+Main Steam	23991.44
15 Jan 2020	14,123	5,144	18,848	23,991.88	Brine+Main Steam	23991.88
16 Jan 2020	14,087	5,125	18,848	23,972.88	Brine+Main Steam	23972.88
17 Jan 2020	14,114	5,078	18,834	23,911.94	Brine+Main Steam	23911.94
18 Jan 2020	13,598	5,056	18,846	23,902.13	Brine+Main Steam	23902.13
19 Jan 2020	13,863	4,980	18,848	23,828.19	Brine+Main Steam	23828.19
20 Jan 2020	14,242	4,890	18,846	23,735.69	Brine+Main Steam	23735.69
21 Jan 2020	14,152	4,996	18,848	23,843.94	Brine+Main Steam	23843.94
22 Jan 2020	14,357	4,975	18,848	23,823.44	Brine+Main Steam	23823.44
23 Jan 2020	14,263	5,109	18,848	23,956.94	Brine+Main Steam	23956.94
24 Jan 2020	13,736	5,046	18,846	23,892.13	Brine+Main Steam	23892.13
25 Jan 2020	13,751	4,990	18,834	23,823.88	Brine+Main Steam	23823.88
26 Jan 2020	13,990	5,001	18,848	23,849.13	Brine+Main Steam	23849.13

Date	Mso,i,y	Msb,y	Msv,y	Msb,y + Msv,y	M _{s,conservative}	M _s
	Wells	Brine	Main steam	Brine+Main Steam	Wells/Brine+Main Steam	Tons
27 Jan 2020	13,974	4,777	18,846	23,623.38	Brine+Main Steam	23623.38
28 Jan 2020	13,927	4,784	18,848	23,631.50	Brine+Main Steam	23631.50
29 Jan 2020	13,968	4,853	18,848	23,700.56	Brine+Main Steam	23700.56
30 Jan 2020	13,696	4,844	18,846	23,690.25	Brine+Main Steam	23690.25
31 Jan 2020	13,951	4,835	18,850	23,684.94	Brine+Main Steam	23684.94
01 Feb 2020	13,284	4,699	18,276	22,974.50	Brine+Main Steam	22974.50
02 Feb 2020	14,004	4,970	19,416	24,385.88	Brine+Main Steam	24385.88
03 Feb 2020	13,825	4,981	18,834	23,815.13	Brine+Main Steam	23815.13
04 Feb 2020	13,652	5,079	18,848	23,927.25	Brine+Main Steam	23927.25
05 Feb 2020	13,939	4,955	18,846	23,800.69	Brine+Main Steam	23800.69
06 Feb 2020	13,259	4,982	18,848	23,829.94	Brine+Main Steam	23829.94
07 Feb 2020	12,919	5,036	18,848	23,883.94	Brine+Main Steam	23883.94
08 Feb 2020	12,968	4,993	18,846	23,839.06	Brine+Main Steam	23839.06
09 Feb 2020	13,578	5,039	18,848	23,886.63	Brine+Main Steam	23886.63
10 Feb 2020	14,309	5,455	18,846	24,301.44	Brine+Main Steam	24301.44
11 Feb 2020	14,236	5,370	18,834	24,203.69	Brine+Main Steam	24203.69
12 Feb 2020	14,325	5,347	18,848	24,194.69	Brine+Main Steam	24194.69
13 Feb 2020	14,181	5,310	18,846	24,156.31	Brine+Main Steam	24156.31
14 Feb 2020	14,290	5,327	18,848	24,174.75	Brine+Main Steam	24174.75
15 Feb 2020	14,277	5,322	18,848	24,170.25	Brine+Main Steam	24170.25
16 Feb 2020	14,491	5,357	18,846	24,203.25	Brine+Main Steam	24203.25
17 Feb 2020	14,324	5,317	18,846	24,162.56	Brine+Main Steam	24162.56
18 Feb 2020	13,590	5,371	18,848	24,218.88	Brine+Main Steam	24218.88
19 Feb 2020	12,677	5,370	18,844	24,214.38	Brine+Main Steam	24214.38
20 Feb 2020	12,934	5,347	18,836	24,183.13	Brine+Main Steam	24183.13
21 Feb 2020	13,081	5,294	18,848	24,141.94	Brine+Main Steam	24141.94
22 Feb 2020	12,590	5,262	18,846	24,108.19	Brine+Main Steam	24108.19
23 Feb 2020	12,684	5,278	18,848	24,126.00	Brine+Main Steam	24126.00

Date	Mso,i,y	Msb,y	Msv,y	Msb,y + Msv,y	M _{s,conservative}	M _s
	Wells	Brine	Main steam	Brine+Main Steam	Wells/Brine+Main Steam	Tons
24 Feb 2020	12,932	5,434	18,848	24,281.75	Brine+Main Steam	24281.75
25 Feb 2020	13,018	5,533	18,848	24,380.56	Brine+Main Steam	24380.56
26 Feb 2020	12,718	5,500	18,844	24,343.94	Brine+Main Steam	24343.94
27 Feb 2020	12,908	5,492	18,846	24,337.94	Brine+Main Steam	24337.94
28 Feb 2020	13,197	5,492	18,836	24,328.13	Brine+Main Steam	24328.13
29 Feb 2020	13,147	5,495	18,848	24,343.38	Brine+Main Steam	24343.38
01 Mar 2020	13,296	5,498	18,840	24,337.75	Brine+Main Steam	24337.75
02 Mar 2020	11,768	5,197	18,850	24,047.06	Brine+Main Steam	24047.06
03 Mar 2020	12,266	5,280	18,840	24,119.69	Brine+Main Steam	24119.69
04 Mar 2020	12,451	5,386	18,850	24,235.75	Brine+Main Steam	24235.75
05 Mar 2020	12,484	5,501	18,840	24,340.75	Brine+Main Steam	24340.75
06 Mar 2020	12,167	5,473	18,840	24,312.63	Brine+Main Steam	24312.63
07 Mar 2020	12,227	5,423	18,850	24,272.69	Brine+Main Steam	24272.69
08 Mar 2020	12,103	5,395	18,840	24,235.44	Brine+Main Steam	24235.44
09 Mar 2020	12,064	5,363	18,850	24,213.00	Brine+Main Steam	24213.00
10 Mar 2020	12,040	5,123	18,840	23,963.00	Brine+Main Steam	23963.00
11 Mar 2020	10,283	4,778	18,850	23,628.25	Brine+Main Steam	23628.25
12 Mar 2020	13,144	5,217	18,840	24,057.31	Brine+Main Steam	24057.31
13 Mar 2020	12,952	5,157	18,850	24,007.00	Brine+Main Steam	24007.00
14 Mar 2020	12,552	5,195	18,840	24,034.63	Brine+Main Steam	24034.63
15 Mar 2020	12,656	5,257	18,850	24,106.50	Brine+Main Steam	24106.50
16 Mar 2020	12,944	5,212	18,850	24,061.56	Brine+Main Steam	24061.56
17 Mar 2020	12,617	5,167	18,840	24,006.50	Brine+Main Steam	24006.50
18 Mar 2020	12,723	5,147	18,850	23,996.75	Brine+Main Steam	23996.75
19 Mar 2020	12,695	5,130	18,840	23,969.69	Brine+Main Steam	23969.69
20 Mar 2020	13,499	5,153	18,850	24,002.56	Brine+Main Steam	24002.56
21 Mar 2020	12,987	5,106	18,840	23,945.50	Brine+Main Steam	23945.50
22 Mar 2020	13,134	5,071	18,850	23,921.00	Brine+Main Steam	23921.00

Date	Mso,i,y	Msb,y	Msv,y	Msb,y + Msv,y	M _{s,conservative}	M _s
	Wells	Brine	Main steam	Brine+Main Steam	Wells/Brine+Main Steam	Tons
23 Mar 2020	13,203	5,145	18,840	23,984.63	Brine+Main Steam	23984.63
24 Mar 2020	12,695	5,122	18,850	23,971.69	Brine+Main Steam	23971.69
25 Mar 2020	13,009	5,171	18,850	24,020.94	Brine+Main Steam	24020.94
26 Mar 2020	12,930	5,170	18,840	24,009.75	Brine+Main Steam	24009.75
27 Mar 2020	13,155	5,135	18,850	23,984.63	Brine+Main Steam	23984.63
28 Mar 2020	13,027	5,113	18,840	23,953.00	Brine+Main Steam	23953.00
29 Mar 2020	13,190	5,109	18,850	23,959.00	Brine+Main Steam	23959.00
30 Mar 2020	13,055	5,170	18,840	24,010.00	Brine+Main Steam	24010.00
31 Mar 2020	13,194	5,104	18,850	23,954.00	Brine+Main Steam	23954.00
01 Apr 2020	12,738	5,133	18,846	23,979.00	Brine+Main Steam	23979.00
02 Apr 2020	13,053	5,121	18,840	23,960.88	Brine+Main Steam	23960.88
03 Apr 2020	12,828	5,158	18,846	24,003.56	Brine+Main Steam	24003.56
04 Apr 2020	13,443	5,301	18,848	24,149.19	Brine+Main Steam	24149.19
05 Apr 2020	13,641	5,259	18,848	24,106.56	Brine+Main Steam	24106.56
06 Apr 2020	13,653	5,244	18,846	24,090.25	Brine+Main Steam	24090.25
07 Apr 2020	13,743	5,246	18,846	24,092.38	Brine+Main Steam	24092.38
08 Apr 2020	13,550	5,201	18,846	24,046.50	Brine+Main Steam	24046.50
09 Apr 2020	13,384	5,200	18,844	24,044.25	Brine+Main Steam	24044.25
10 Apr 2020	13,347	5,176	18,846	24,021.75	Brine+Main Steam	24021.75
11 Apr 2020	13,026	5,142	18,840	23,981.63	Brine+Main Steam	23981.63
12 Apr 2020	12,699	5,114	18,848	23,961.75	Brine+Main Steam	23961.75
13 Apr 2020	12,876	5,094	18,846	23,940.25	Brine+Main Steam	23940.25
14 Apr 2020	13,095	5,059	18,848	23,906.75	Brine+Main Steam	23906.75
15 Apr 2020	13,271	5,093	18,846	23,938.63	Brine+Main Steam	23938.63
16 Apr 2020	13,144	5,099	18,846	23,944.75	Brine+Main Steam	23944.75
17 Apr 2020	13,254	5,053	18,846	23,899.25	Brine+Main Steam	23899.25
18 Apr 2020	13,189	5,110	18,844	23,953.50	Brine+Main Steam	23953.50
19 Apr 2020	13,102	5,079	18,840	23,918.88	Brine+Main Steam	23918.88

Date	Mso,i,y	Msb,y	Msv,y	Msb,y + Msv,y	M _{s,conservative}	M _s
	Wells	Brine	Main steam	Brine+Main Steam	Wells/Brine+Main Steam	Tons
20 Apr 2020	13,139	5,063	18,848	23,911.38	Brine+Main Steam	23911.38
21 Apr 2020	13,474	5,032	18,848	23,879.88	Brine+Main Steam	23879.88
22 Apr 2020	13,671	5,039	18,846	23,884.75	Brine+Main Steam	23884.75
23 Apr 2020	13,665	5,017	18,848	23,864.50	Brine+Main Steam	23864.50
24 Apr 2020	13,668	5,005	18,844	23,848.50	Brine+Main Steam	23848.50
25 Apr 2020	13,376	4,987	18,846	23,833.25	Brine+Main Steam	23833.25
26 Apr 2020	13,059	4,975	18,846	23,820.88	Brine+Main Steam	23820.88
27 Apr 2020	13,602	5,009	18,846	23,855.38	Brine+Main Steam	23855.38
28 Apr 2020	13,014	4,964	18,840	23,803.50	Brine+Main Steam	23803.50
29 Apr 2020	12,490	5,173	18,848	24,020.63	Brine+Main Steam	24020.63
30 Apr 2020	12,059	5,050	18,848	23,898.38	Brine+Main Steam	23898.38
01 May 2020	12,235	5,000	18,846	23,846.25	Brine+Main Steam	23846.25
02 May 2020	12,037	4,903	18,846	23,749.00	Brine+Main Steam	23749.00
03 May 2020	12,118	4,924	18,844	23,768.38	Brine+Main Steam	23768.38
04 May 2020	12,360	4,960	18,846	23,806.38	Brine+Main Steam	23806.38
05 May 2020	12,502	4,869	18,846	23,714.88	Brine+Main Steam	23714.88
06 May 2020	11,949	4,853	18,726	23,578.75	Brine+Main Steam	23578.75
07 May 2020	11,051	4,823	18,848	23,671.13	Brine+Main Steam	23671.13
08 May 2020	11,271	4,845	18,848	23,692.88	Brine+Main Steam	23692.88
09 May 2020	11,069	4,850	18,846	23,695.75	Brine+Main Steam	23695.75
10 May 2020	11,625	4,864	18,846	23,709.63	Brine+Main Steam	23709.63
11 May 2020	11,052	4,799	18,815	23,614.00	Brine+Main Steam	23614.00
12 May 2020	11,063	4,800	18,816	23,616.00	Brine+Main Steam	23616.00
13 May 2020	11,011	4,801	18,817	23,618.00	Brine+Main Steam	23618.00
14 May 2020	15,608	6,689	18,934	25,623.25	Brine+Main Steam	25623.25
15 May 2020	12,332	5,396	18,842	24,238.13	Brine+Main Steam	24238.13
16 May 2020	11,824	5,384	18,848	24,232.38	Brine+Main Steam	24232.38
17 May 2020	11,608	5,366	18,848	24,213.63	Brine+Main Steam	24213.63

Date	Mso,i,y	Msb,y	Msv,y	Msb,y + Msv,y	M _{s,conservative}	M _s
	Wells	Brine	Main steam	Brine+Main Steam	Wells/Brine+Main Steam	Tons
18 May 2020	12,319	5,404	18,846	24,249.75	Brine+Main Steam	24249.75
19 May 2020	12,359	5,436	18,844	24,280.13	Brine+Main Steam	24280.13
20 May 2020	12,701	5,434	18,846	24,279.88	Brine+Main Steam	24279.88
21 May 2020	12,500	5,376	18,844	24,219.75	Brine+Main Steam	24219.75
22 May 2020	12,396	5,332	18,846	24,178.25	Brine+Main Steam	24178.25
23 May 2020	12,419	5,327	18,842	24,169.38	Brine+Main Steam	24169.38
24 May 2020	12,479	5,295	18,850	24,145.00	Brine+Main Steam	24145.00
25 May 2020	13,136	5,237	18,846	24,082.63	Brine+Main Steam	24082.63
26 May 2020	13,538	5,273	18,844	24,117.25	Brine+Main Steam	24117.25
27 May 2020	13,236	5,216	18,846	24,061.63	Brine+Main Steam	24061.63
28 May 2020	13,126	5,190	18,846	24,035.50	Brine+Main Steam	24035.50
29 May 2020	12,978	5,309	18,846	24,154.88	Brine+Main Steam	24154.88
30 May 2020	13,127	5,130	18,846	23,975.63	Brine+Main Steam	23975.63
31 May 2020	13,513	4,613	18,842	23,455.38	Brine+Main Steam	23455.38
01 Jun 2020	13,534	4,612	18,848	23,460.25	Brine+Main Steam	23460.25
02 Jun 2020	13,839	4,706	18,846	23,552.38	Brine+Main Steam	23552.38
03 Jun 2020	14,160	4,970	18,846	23,816.25	Brine+Main Steam	23816.25
04 Jun 2020	14,006	4,917	18,844	23,761.00	Brine+Main Steam	23761.00
05 Jun 2020	13,902	4,888	18,846	23,733.75	Brine+Main Steam	23733.75
06 Jun 2020	13,721	4,878	18,846	23,724.13	Brine+Main Steam	23724.13
07 Jun 2020	13,756	5,063	18,846	23,909.38	Brine+Main Steam	23909.38
08 Jun 2020	13,612	5,063	18,846	23,909.13	Brine+Main Steam	23909.13
09 Jun 2020	13,880	5,049	18,844	23,892.50	Brine+Main Steam	23892.50
10 Jun 2020	12,461	5,024	18,846	23,870.38	Brine+Main Steam	23870.38
11 Jun 2020	10,711	5,038	18,848	23,886.25	Brine+Main Steam	23886.25
12 Jun 2020	13,273	5,030	18,844	23,873.63	Brine+Main Steam	23873.63
13 Jun 2020	13,200	5,152	18,846	23,997.75	Brine+Main Steam	23997.75
14 Jun 2020	13,439	5,190	18,846	24,036.00	Brine+Main Steam	24036.00

Date	Mso,i,y	Msb,y	Msv,y	Msb,y + Msv,y	M _{s,conservative}	M _s
	Wells	Brine	Main steam	Brine+Main Steam	Wells/Brine+Main Steam	Tons
15 Jun 2020	13,451	5,150	18,844	23,994.25	Brine+Main Steam	23994.25
16 Jun 2020	12,711	5,042	18,846	23,888.38	Brine+Main Steam	23888.38
17 Jun 2020	10,895	5,015	18,844	23,858.50	Brine+Main Steam	23858.50
18 Jun 2020	11,545	5,076	18,846	23,922.25	Brine+Main Steam	23922.25
19 Jun 2020	13,031	5,131	18,846	23,976.88	Brine+Main Steam	23976.88
20 Jun 2020	13,284	5,190	18,846	24,035.75	Brine+Main Steam	24035.75
21 Jun 2020	14,342	5,280	18,846	24,126.00	Brine+Main Steam	24126.00
22 Jun 2020	15,533	5,300	18,844	24,143.88	Brine+Main Steam	24143.88
23 Jun 2020	15,281	5,245	18,846	24,090.75	Brine+Main Steam	24090.75
24 Jun 2020	15,200	5,211	18,844	24,055.13	Brine+Main Steam	24055.13
25 Jun 2020	15,195	5,177	18,846	24,023.00	Brine+Main Steam	24023.00
26 Jun 2020	15,234	5,152	18,846	23,998.13	Brine+Main Steam	23998.13
27 Jun 2020	15,319	5,157	18,846	24,003.38	Brine+Main Steam	24003.38
28 Jun 2020	15,328	5,139	18,846	23,984.50	Brine+Main Steam	23984.50
29 Jun 2020	15,288	5,116	18,596	23,711.75	Brine+Main Steam	23711.75
30 Jun 2020	15,416	5,083	18,850	23,933.00	Brine+Main Steam	23933.00
01 Jul 2020	15,416	5,083	18,850	23,933.00	Brine+Main Steam	23933.00
02 Jul 2020	15,688	5,119	18,840	23,959.00	Brine+Main Steam	23959.00
03 Jul 2020	15,342	5,265	18,850	24,115.00	Brine+Main Steam	24115.00
04 Jul 2020	15,259	5,264	18,840	24,104.00	Brine+Main Steam	24104.00
05 Jul 2020	15,209	5,279	18,850	24,129.00	Brine+Main Steam	24129.00
06 Jul 2020	14,739	5,354	18,850	24,204.00	Brine+Main Steam	24204.00
07 Jul 2020	9,068	4,931	18,840	23,771.00	Brine+Main Steam	23771.00
08 Jul 2020	14,131	4,861	18,850	23,711.00	Brine+Main Steam	23711.00
09 Jul 2020	15,119	4,871	18,840	23,711.00	Brine+Main Steam	23711.00
10 Jul 2020	15,083	4,883	18,846	23,728.88	Brine+Main Steam	23728.88
11 Jul 2020	15,097	4,856	18,846	23,702.25	Brine+Main Steam	23702.25
12 Jul 2020	15,070	4,806	18,846	23,651.75	Brine+Main Steam	23651.75

Date	Mso,i,y	Msb,y	Msv,y	Msb,y + Msv,y	M _{s,conservative}	M _s
	Wells	Brine	Main steam	Brine+Main Steam	Wells/Brine+Main Steam	Tons
13 Jul 2020	15,064	4,897	18,846	23,743.00	Brine+Main Steam	23743.00
14 Jul 2020	15,054	4,902	18,844	23,745.50	Brine+Main Steam	23745.50
15 Jul 2020	15,026	4,989	18,846	23,835.00	Brine+Main Steam	23835.00
16 Jul 2020	15,024	4,912	18,846	23,758.13	Brine+Main Steam	23758.13
17 Jul 2020	14,639	4,733	18,844	23,576.75	Brine+Main Steam	23576.75
18 Jul 2020	14,702	4,833	18,846	23,678.75	Brine+Main Steam	23678.75
19 Jul 2020	14,750	4,807	18,846	23,653.00	Brine+Main Steam	23653.00
20 Jul 2020	14,824	4,889	18,846	23,734.88	Brine+Main Steam	23734.88
21 Jul 2020	14,968	4,816	18,846	23,662.00	Brine+Main Steam	23662.00
22 Jul 2020	15,100	4,875	18,844	23,718.50	Brine+Main Steam	23718.50
23 Jul 2020	15,025	4,730	18,846	23,575.88	Brine+Main Steam	23575.88
24 Jul 2020	14,051	4,762	18,846	23,607.75	Brine+Main Steam	23607.75
25 Jul 2020	13,923	4,891	18,844	23,734.50	Brine+Main Steam	23734.50
26 Jul 2020	14,716	4,549	18,846	23,395.00	Brine+Main Steam	23395.00
27 Jul 2020	14,665	4,497	18,844	23,340.50	Brine+Main Steam	23340.50
28 Jul 2020	14,432	4,559	18,844	23,403.00	Brine+Main Steam	23403.00
29 Jul 2020	14,261	4,622	18,846	23,467.63	Brine+Main Steam	23467.63
30 Jul 2020	13,979	4,510	18,848	23,357.63	Brine+Main Steam	23357.63
31 Jul 2020	14,242	4,582	18,844	23,425.75	Brine+Main Steam	23425.75
01 Aug 2020	14,302	4,546	18,850	23,396.00	Brine+Main Steam	23396.00
02 Aug 2020	14,494	4,496	18,840	23,336.00	Brine+Main Steam	23336.00
03 Aug 2020	14,449	4,408	18,850	23,258.00	Brine+Main Steam	23258.00
04 Aug 2020	14,628	4,347	18,840	23,187.00	Brine+Main Steam	23187.00
05 Aug 2020	14,925	4,094	18,850	22,944.00	Brine+Main Steam	22944.00
06 Aug 2020	14,823	4,465	18,840	23,305.00	Brine+Main Steam	23305.00
07 Aug 2020	15,008	4,242	18,850	23,092.00	Brine+Main Steam	23092.00
08 Aug 2020	14,900	4,418	18,980	23,398.00	Brine+Main Steam	23398.00
09 Aug 2020	14,976	4,097	21,528	25,625.00	Brine+Main Steam	25625.00

Date	Mso,i,y	Msb,y	Msv,y	Msb,y + Msv,y	M _{s,conservative}	M _s
	Wells	Brine	Main steam	Brine+Main Steam	Wells/Brine+Main Steam	Tons
10 Aug 2020	15,162	4,318	21,452	25,770.00	Brine+Main Steam	25770.00
11 Aug 2020	15,329	4,396	21,540	25,936.00	Brine+Main Steam	25936.00
12 Aug 2020	15,131	4,675	21,540	26,215.00	Brine+Main Steam	26215.00
13 Aug 2020	15,142	4,683	21,532	26,215.00	Brine+Main Steam	26215.00
14 Aug 2020	15,187	4,583	21,496	26,079.00	Brine+Main Steam	26079.00
15 Aug 2020	14,979	4,717	21,512	26,229.00	Brine+Main Steam	26229.00
16 Aug 2020	15,076	4,758	21,520	26,278.00	Brine+Main Steam	26278.00
17 Aug 2020	15,045	4,649	21,432	26,081.00	Brine+Main Steam	26081.00
18 Aug 2020	15,171	4,674	21,536	26,210.00	Brine+Main Steam	26210.00
19 Aug 2020	14,934	4,644	20,972	25,616.00	Brine+Main Steam	25616.00
20 Aug 2020	13,154	5,733	21,540	27,273.00	Brine+Main Steam	27273.00
21 Aug 2020	12,860	5,932	20,940	26,872.00	Brine+Main Steam	26872.00
22 Aug 2020	12,507	5,864	21,520	27,384.00	Brine+Main Steam	27384.00
23 Aug 2020	12,433	5,833	21,532	27,365.00	Brine+Main Steam	27365.00
24 Aug 2020	13,122	5,817	20,828	26,645.00	Brine+Main Steam	26645.00
25 Aug 2020	13,478	5,783	21,380	27,163.00	Brine+Main Steam	27163.00
26 Aug 2020	13,695	5,724	21,248	26,972.00	Brine+Main Steam	26972.00
27 Aug 2020	13,298	5,731	21,532	27,263.00	Brine+Main Steam	27263.00
28 Aug 2020	13,204	5,706	21,540	27,246.00	Brine+Main Steam	27246.00
29 Aug 2020	14,815	5,627	21,528	27,155.00	Brine+Main Steam	27155.00
30 Aug 2020	14,366	5,602	21,520	27,122.00	Brine+Main Steam	27122.00
31 Aug 2020	14,588	5,652	21,420	27,072.00	Brine+Main Steam	27072.00
01 Sep 2020	14,777	5,638	21,540	27,178.00	Brine+Main Steam	27178.00
02 Sep 2020	15,234	5,681	21,540	27,221.00	Brine+Main Steam	27221.00
03 Sep 2020	15,769	5,630	21,540	27,170.00	Brine+Main Steam	27170.00
04 Sep 2020	15,875	5,585	21,540	27,125.00	Brine+Main Steam	27125.00
05 Sep 2020	15,653	5,611	21,528	27,139.00	Brine+Main Steam	27139.00
06 Sep 2020	14,814	5,585	21,472	27,057.00	Brine+Main Steam	27057.00

Date	Mso,i,y	Msb,y	Msv,y	Msb,y + Msv,y	M _{s,conservative}	M _s
	Wells	Brine	Main steam	Brine+Main Steam	Wells/Brine+Main Steam	Tons
07 Sep 2020	14,623	5,585	21,444	27,029.00	Brine+Main Steam	27029.00
08 Sep 2020	13,806	5,589	21,540	27,129.00	Brine+Main Steam	27129.00
09 Sep 2020	13,626	5,489	21,540	27,029.00	Brine+Main Steam	27029.00
10 Sep 2020	14,066	5,614	21,528	27,142.00	Brine+Main Steam	27142.00
11 Sep 2020	13,771	5,522	14,024	19,546.00	Brine+Main Steam	19546.00
12 Sep 2020	13,651	5,593	16,160	21,753.00	Brine+Main Steam	21753.00
13 Sep 2020	13,364	5,529	16,148	21,677.00	Brine+Main Steam	21677.00
14 Sep 2020	13,931	5,550	16,148	21,698.00	Brine+Main Steam	21698.00
15 Sep 2020	13,345	5,529	16,160	21,689.00	Brine+Main Steam	21689.00
16 Sep 2020	13,766	5,518	16,152	21,670.00	Brine+Main Steam	21670.00
17 Sep 2020	13,662	5,535	16,152	21,687.00	Brine+Main Steam	21687.00
18 Sep 2020	13,357	5,518	16,160	21,678.00	Brine+Main Steam	21678.00
19 Sep 2020	13,685	5,552	16,148	21,700.00	Brine+Main Steam	21700.00
20 Sep 2020	13,849	5,488	16,148	21,636.00	Brine+Main Steam	21636.00
21 Sep 2020	14,292	5,517	16,148	21,665.00	Brine+Main Steam	21665.00
22 Sep 2020	13,790	5,527	16,152	21,679.00	Brine+Main Steam	21679.00
23 Sep 2020	14,011	5,522	16,152	21,674.00	Brine+Main Steam	21674.00
24 Sep 2020	13,981	5,558	16,152	21,710.00	Brine+Main Steam	21710.00
25 Sep 2020	13,685	5,562	16,148	21,710.00	Brine+Main Steam	21710.00
26 Sep 2020	14,031	5,564	16,160	21,724.00	Brine+Main Steam	21724.00
27 Sep 2020	13,733	5,631	16,148	21,779.00	Brine+Main Steam	21779.00
28 Sep 2020	14,285	5,646	16,152	21,798.00	Brine+Main Steam	21798.00
29 Sep 2020	14,217	5,609	16,160	21,769.00	Brine+Main Steam	21769.00
30 Sep 2020	14,410	5,544	16,152	21,696.00	Brine+Main Steam	21696.00
01 Oct 2020	14,308	5,480	16,148	21,628.00	Brine+Main Steam	21628.00
02 Oct 2020	14,732	5,483	16,160	21,643.00	Brine+Main Steam	21643.00
03 Oct 2020	14,897	5,505	16,148	21,653.00	Brine+Main Steam	21653.00
04 Oct 2020	15,530	5,442	16,152	21,594.00	Brine+Main Steam	21594.00

Date	Mso,i,y	Msb,y	Msv,y	Msb,y + Msv,y	M _{s,conservative}	M _s
	Wells	Brine	Main steam	Brine+Main Steam	Wells/Brine+Main Steam	Tons
05 Oct 2020	15,081	5,537	16,160	21,697.00	Brine+Main Steam	21697.00
06 Oct 2020	15,322	5,521	16,152	21,673.00	Brine+Main Steam	21673.00
07 Oct 2020	15,228	5,442	16,148	21,590.00	Brine+Main Steam	21590.00
08 Oct 2020	15,518	5,496	20,360	25,856.00	Brine+Main Steam	25856.00
09 Oct 2020	15,672	5,513	21,540	27,053.00	Brine+Main Steam	27053.00
10 Oct 2020	15,717	5,313	21,540	26,853.00	Brine+Main Steam	26853.00
11 Oct 2020	15,538	5,386	21,540	26,926.00	Brine+Main Steam	26926.00
12 Oct 2020	15,740	5,418	21,408	26,826.00	Brine+Main Steam	26826.00
13 Oct 2020	15,885	5,424	21,532	26,956.00	Brine+Main Steam	26956.00
14 Oct 2020	15,881	5,429	21,540	26,969.00	Brine+Main Steam	26969.00
15 Oct 2020	15,935	5,426	21,540	26,966.00	Brine+Main Steam	26966.00
16 Oct 2020	16,071	5,428	21,540	26,968.00	Brine+Main Steam	26968.00
17 Oct 2020	16,092	5,434	21,540	26,974.00	Brine+Main Steam	26974.00
18 Oct 2020	15,989	5,461	21,540	27,001.00	Brine+Main Steam	27001.00
19 Oct 2020	14,468	5,467	21,420	26,887.00	Brine+Main Steam	26887.00
20 Oct 2020	16,103	5,594	21,528	27,122.00	Brine+Main Steam	27122.00
21 Oct 2020	16,006	5,525	21,540	27,065.00	Brine+Main Steam	27065.00
22 Oct 2020	16,174	5,541	21,540	27,081.00	Brine+Main Steam	27081.00
23 Oct 2020	16,456	5,522	21,460	26,982.00	Brine+Main Steam	26982.00
24 Oct 2020	16,142	5,562	21,532	27,094.00	Brine+Main Steam	27094.00
25 Oct 2020	15,966	5,545	21,528	27,073.00	Brine+Main Steam	27073.00
26 Oct 2020	15,682	5,279	21,420	26,699.00	Brine+Main Steam	26699.00
27 Oct 2020	15,649	5,510	21,540	27,050.00	Brine+Main Steam	27050.00
28 Oct 2020	17,142	5,429	21,540	26,969.00	Brine+Main Steam	26969.00
29 Oct 2020	14,612	5,520	21,540	27,060.00	Brine+Main Steam	27060.00
30 Oct 2020	15,121	5,479	21,540	27,019.00	Brine+Main Steam	27019.00
31 Oct 2020	14,811	5,482	21,532	27,014.00	Brine+Main Steam	27014.00
01 Nov 2020	14,427	4,881	21,480	26,361.00	Brine+Main Steam	26361.00

Date	Mso,i,y	Msb,y	Msv,y	Msb,y + Msv,y	M _{s,conservative}	M _s
	Wells	Brine	Main steam	Brine+Main Steam	Wells/Brine+Main Steam	Tons
02 Nov 2020	14,694	4,678	21,420	26,098.00	Brine+Main Steam	26098.00
03 Nov 2020	14,536	4,646	21,520	26,166.00	Brine+Main Steam	26166.00
04 Nov 2020	14,669	4,649	21,540	26,189.00	Brine+Main Steam	26189.00
05 Nov 2020	15,240	4,752	21,528	26,280.00	Brine+Main Steam	26280.00
06 Nov 2020	15,114	4,847	21,332	26,179.00	Brine+Main Steam	26179.00
07 Nov 2020	14,772	5,112	20,772	25,884.00	Brine+Main Steam	25884.00
08 Nov 2020	15,867	4,967	21,536	26,503.00	Brine+Main Steam	26503.00
09 Nov 2020	14,541	4,940	21,452	26,392.00	Brine+Main Steam	26392.00
10 Nov 2020	14,645	4,897	21,540	26,437.00	Brine+Main Steam	26437.00
11 Nov 2020	15,117	4,946	21,340	26,286.00	Brine+Main Steam	26286.00
12 Nov 2020	17,448	4,925	21,340	26,265.00	Brine+Main Steam	26265.00
13 Nov 2020	17,621	4,963	21,528	26,491.00	Brine+Main Steam	26491.00
14 Nov 2020	17,020	4,982	21,544	26,526.00	Brine+Main Steam	26526.00
15 Nov 2020	16,907	4,989	21,536	26,525.00	Brine+Main Steam	26525.00
16 Nov 2020	17,283	4,983	21,544	26,527.00	Brine+Main Steam	26527.00
17 Nov 2020	16,952	4,970	21,428	26,398.00	Brine+Main Steam	26398.00
18 Nov 2020	17,030	4,962	21,540	26,502.00	Brine+Main Steam	26502.00
19 Nov 2020	16,974	4,967	21,540	26,507.00	Brine+Main Steam	26507.00
20 Nov 2020	17,655	4,950	21,540	26,490.00	Brine+Main Steam	26490.00
21 Nov 2020	18,088	4,922	21,528	26,450.00	Brine+Main Steam	26450.00
22 Nov 2020	16,809	4,928	21,544	26,472.00	Brine+Main Steam	26472.00
23 Nov 2020	16,656	4,938	21,408	26,346.00	Brine+Main Steam	26346.00
24 Nov 2020	16,348	4,859	21,540	26,399.00	Brine+Main Steam	26399.00
25 Nov 2020	16,748	4,791	21,532	26,323.00	Brine+Main Steam	26323.00
26 Nov 2020	17,914	4,254	21,536	25,790.00	Brine+Main Steam	25790.00
27 Nov 2020	18,515	4,001	21,544	25,545.00	Brine+Main Steam	25545.00
28 Nov 2020	18,626	4,008	21,536	25,544.00	Brine+Main Steam	25544.00
29 Nov 2020	18,360	4,019	21,532	25,551.00	Brine+Main Steam	25551.00

Date	Mso,i,y	Msb,y	Msv,y	Msb,y + Msv,y	M _{s,conservative}	M _s
	Wells	Brine	Main steam	Brine+Main Steam	Wells/Brine+Main Steam	Tons
30 Nov 2020	18,633	4,010	21,540	25,550.00	Brine+Main Steam	25550.00
01 Dec 2020	18,389	4,014	21,540	25,554.00	Brine+Main Steam	25554.00
02 Dec 2020	18,186	4,002	21,540	25,542.00	Brine+Main Steam	25542.00
03 Dec 2020	18,309	3,974	21,540	25,514.00	Brine+Main Steam	25514.00
04 Dec 2020	18,688	3,970	21,532	25,502.00	Brine+Main Steam	25502.00
05 Dec 2020	18,486	3,960	21,536	25,496.00	Brine+Main Steam	25496.00
06 Dec 2020	18,789	3,977	21,544	25,521.00	Brine+Main Steam	25521.00
07 Dec 2020	18,235	3,972	21,536	25,508.00	Brine+Main Steam	25508.00
08 Dec 2020	18,695	3,969	21,432	25,401.00	Brine+Main Steam	25401.00
09 Dec 2020	18,889	3,955	21,540	25,495.00	Brine+Main Steam	25495.00
10 Dec 2020	18,513	3,934	21,532	25,466.00	Brine+Main Steam	25466.00
11 Dec 2020	18,465	3,927	21,536	25,463.00	Brine+Main Steam	25463.00
12 Dec 2020	18,624	3,922	21,544	25,466.00	Brine+Main Steam	25466.00
13 Dec 2020	18,835	3,919	21,536	25,455.00	Brine+Main Steam	25455.00
14 Dec 2020	18,915	3,930	21,424	25,354.00	Brine+Main Steam	25354.00
15 Dec 2020	17,737	4,852	21,536	26,388.00	Brine+Main Steam	26388.00
16 Dec 2020	18,024	5,385	21,544	26,929.00	Brine+Main Steam	26929.00
17 Dec 2020	17,241	5,253	21,536	26,789.00	Brine+Main Steam	26789.00
18 Dec 2020	17,262	5,028	21,532	26,560.00	Brine+Main Steam	26560.00
19 Dec 2020	15,831	4,681	21,540	26,221.00	Brine+Main Steam	26221.00
20 Dec 2020	16,445	4,756	21,540	26,296.00	Brine+Main Steam	26296.00
21 Dec 2020	17,222	4,595	21,452	26,047.00	Brine+Main Steam	26047.00
22 Dec 2020	16,727	4,607	21,528	26,135.00	Brine+Main Steam	26135.00
23 Dec 2020	15,557	4,616	21,540	26,156.00	Brine+Main Steam	26156.00
24 Dec 2020	15,762	4,218	21,540	25,758.00	Brine+Main Steam	25758.00
25 Dec 2020	15,740	3,585	21,540	25,125.00	Brine+Main Steam	25125.00
26 Dec 2020	16,624	3,561	21,540	25,101.00	Brine+Main Steam	25101.00
27 Dec 2020	16,636	3,568	21,528	25,096.00	Brine+Main Steam	25096.00

Date	Mso,i,y	Msb,y	Msv,y	Msb,y + Msv,y	M _{s,conservative}	M _s
	Wells	Brine	Main steam	Brine+Main Steam	Wells/Brine+Main Steam	Tons
28 Dec 2020	17,073	3,565	21,532	25,097.00	Brine+Main Steam	25097.00
29 Dec 2020	18,136	3,544	21,536	25,080.00	Brine+Main Steam	25080.00
30 Dec 2020	17,776	3,754	21,544	25,298.00	Brine+Main Steam	25298.00
31 Dec 2020	16,684	3,861	21,528	25,389.00	Brine+Main Steam	25389.00
01 Jan 2021	16,515	3,786	21,540	25,326.00	Brine+Main Steam	25326.00
02 Jan 2021	16,288	3,751	21,540	25,291.00	Brine+Main Steam	25291.00
03 Jan 2021	16,461	3,727	21,540	25,267.00	Brine+Main Steam	25267.00
04 Jan 2021	15,239	3,609	21,420	25,029.00	Brine+Main Steam	25029.00
05 Jan 2021	15,942	3,697	21,540	25,237.00	Brine+Main Steam	25237.00
06 Jan 2021	17,307	3,710	21,532	25,242.00	Brine+Main Steam	25242.00
07 Jan 2021	17,573	3,639	21,536	25,175.00	Brine+Main Steam	25175.00
08 Jan 2021	17,178	3,646	21,544	25,190.00	Brine+Main Steam	25190.00
09 Jan 2021	16,648	3,711	21,536	25,247.00	Brine+Main Steam	25247.00
10 Jan 2021	16,708	3,658	21,532	25,190.00	Brine+Main Steam	25190.00
11 Jan 2021	16,356	3,626	21,540	25,166.00	Brine+Main Steam	25166.00
12 Jan 2021	16,628	3,657	21,440	25,097.00	Brine+Main Steam	25097.00
13 Jan 2021	16,650	3,585	21,540	25,125.00	Brine+Main Steam	25125.00
14 Jan 2021	16,339	3,592	21,532	25,124.00	Brine+Main Steam	25124.00
15 Jan 2021	16,292	3,559	21,468	25,027.00	Brine+Main Steam	25027.00
16 Jan 2021	16,319	3,528	21,540	25,068.00	Brine+Main Steam	25068.00
17 Jan 2021	16,005	3,542	21,540	25,082.00	Brine+Main Steam	25082.00
18 Jan 2021	16,450	3,830	21,540	25,370.00	Brine+Main Steam	25370.00
19 Jan 2021	16,568	3,674	21,420	25,094.00	Brine+Main Steam	25094.00
20 Jan 2021	17,151	3,616	21,540	25,156.00	Brine+Main Steam	25156.00
21 Jan 2021	16,591	3,637	21,540	25,177.00	Brine+Main Steam	25177.00
22 Jan 2021	16,346	3,581	21,492	25,073.00	Brine+Main Steam	25073.00
23 Jan 2021	15,981	3,575	21,536	25,111.00	Brine+Main Steam	25111.00
24 Jan 2021	16,247	3,577	21,544	25,121.00	Brine+Main Steam	25121.00

Date	Mso,i,y	Msb,y	Msv,y	Msb,y + Msv,y	M _{s,conservative}	M _s
	Wells	Brine	Main steam	Brine+Main Steam	Wells/Brine+Main Steam	Tons
25 Jan 2021	14,143	3,548	21,528	25,076.00	Brine+Main Steam	25076.00
26 Jan 2021	13,882	3,586	21,540	25,126.00	Brine+Main Steam	25126.00
27 Jan 2021	13,966	3,552	21,540	25,092.00	Brine+Main Steam	25092.00
28 Jan 2021	15,463	3,611	21,540	25,151.00	Brine+Main Steam	25151.00
29 Jan 2021	15,451	3,609	21,532	25,141.00	Brine+Main Steam	25141.00
30 Jan 2021	15,433	3,577	21,528	25,105.00	Brine+Main Steam	25105.00
31 Jan 2021	15,210	3,568	21,544	25,112.00	Brine+Main Steam	25112.00
01 Feb 2021	33,862	3,068	2,578	5,646.31	Wells	33861.73
02 Feb 2021	15,319	3,596	21,532	25,128.00	Brine+Main Steam	25128.00
03 Feb 2021	15,366	3,567	21,540	25,107.00	Brine+Main Steam	25107.00
04 Feb 2021	15,444	3,568	21,540	25,108.00	Brine+Main Steam	25108.00
05 Feb 2021	15,525	3,593	21,540	25,133.00	Brine+Main Steam	25133.00
06 Feb 2021	16,055	3,595	21,540	25,135.00	Brine+Main Steam	25135.00
07 Feb 2021	16,157	3,615	21,540	25,155.00	Brine+Main Steam	25155.00
08 Feb 2021	16,170	3,600	21,528	25,128.00	Brine+Main Steam	25128.00
09 Feb 2021	16,231	3,553	21,544	25,097.00	Brine+Main Steam	25097.00
10 Feb 2021	16,495	3,553	21,536	25,089.00	Brine+Main Steam	25089.00
11 Feb 2021	16,226	3,543	21,424	24,967.00	Brine+Main Steam	24967.00
12 Feb 2021	15,775	3,549	21,536	25,085.00	Brine+Main Steam	25085.00
13 Feb 2021	15,905	3,514	21,532	25,046.00	Brine+Main Steam	25046.00
14 Feb 2021	15,652	3,502	21,540	25,042.00	Brine+Main Steam	25042.00
15 Feb 2021	16,075	3,490	21,540	25,030.00	Brine+Main Steam	25030.00
16 Feb 2021	15,973	3,552	21,540	25,092.00	Brine+Main Steam	25092.00
17 Feb 2021	16,019	3,551	21,540	25,091.00	Brine+Main Steam	25091.00
18 Feb 2021	15,906	3,605	21,540	25,145.00	Brine+Main Steam	25145.00
19 Feb 2021	16,011	3,600	21,528	25,128.00	Brine+Main Steam	25128.00
20 Feb 2021	15,822	3,577	21,544	25,121.00	Brine+Main Steam	25121.00
21 Feb 2021	15,605	3,545	21,536	25,081.00	Brine+Main Steam	25081.00

Date	Mso,i,y	Msb,y	Msv,y	Msb,y + Msv,y	M _{s,conservative}	M _s
	Wells	Brine	Main steam	Brine+Main Steam	Wells/Brine+Main Steam	Tons
22 Feb 2021	15,824	3,406	21,532	24,938.00	Brine+Main Steam	24938.00
23 Feb 2021	15,699	3,362	21,540	24,902.00	Brine+Main Steam	24902.00
24 Feb 2021	10,445	3,394	21,540	24,934.00	Brine+Main Steam	24934.00
25 Feb 2021	14,009	3,375	21,540	24,915.00	Brine+Main Steam	24915.00
26 Feb 2021	11,538	3,380	21,500	24,880.00	Brine+Main Steam	24880.00
27 Feb 2021	4,700	3,085	21,532	24,617.00	Brine+Main Steam	24617.00
28 Feb 2021	12,343	3,394	21,528	24,922.00	Brine+Main Steam	24922.00
01 Mar 2021	15,239	3,365	21,420	24,785.00	Brine+Main Steam	24785.00
02 Mar 2021	15,034	3,350	21,540	24,890.00	Brine+Main Steam	24890.00
03 Mar 2021	14,971	3,368	21,540	24,908.00	Brine+Main Steam	24908.00
04 Mar 2021	15,012	3,302	21,540	24,842.00	Brine+Main Steam	24842.00
05 Mar 2021	14,918	3,363	21,472	24,835.00	Brine+Main Steam	24835.00
06 Mar 2021	14,828	3,286	21,500	24,786.00	Brine+Main Steam	24786.00
07 Mar 2021	14,951	3,337	21,540	24,877.00	Brine+Main Steam	24877.00
08 Mar 2021	15,070	3,436	21,140	24,576.00	Brine+Main Steam	24576.00
09 Mar 2021	14,431	3,391	21,532	24,923.00	Brine+Main Steam	24923.00
10 Mar 2021	14,210	3,487	21,536	25,023.00	Brine+Main Steam	25023.00
11 Mar 2021	14,300	3,571	21,532	25,103.00	Brine+Main Steam	25103.00
12 Mar 2021	13,814	3,558	21,308	24,866.00	Brine+Main Steam	24866.00
13 Mar 2021	13,912	3,476	21,544	25,020.00	Brine+Main Steam	25020.00
14 Mar 2021	13,813	3,522	21,528	25,050.00	Brine+Main Steam	25050.00
15 Mar 2021	14,064	3,522	21,540	25,062.00	Brine+Main Steam	25062.00
16 Mar 2021	14,632	3,649	21,540	25,189.00	Brine+Main Steam	25189.00
17 Mar 2021	15,491	1,869	21,540	23,409.00	Brine+Main Steam	23409.00
18 Mar 2021	15,262	1,601	21,540	23,141.00	Brine+Main Steam	23141.00
19 Mar 2021	12,729	2,627	21,480	24,107.00	Brine+Main Steam	24107.00
20 Mar 2021	13,307	1,568	21,540	23,108.00	Brine+Main Steam	23108.00
21 Mar 2021	12,809	2,303	21,540	23,843.00	Brine+Main Steam	23843.00

Date	Mso,i,y	Msb,y	Msv,y	Msb,y + Msv,y	M _{s,conservative}	M _s
	Wells	Brine	Main steam	Brine+Main Steam	Wells/Brine+Main Steam	Tons
22 Mar 2021	11,534	2,558	21,460	24,018.00	Brine+Main Steam	24018.00
23 Mar 2021	10,801	2,846	21,532	24,378.00	Brine+Main Steam	24378.00
24 Mar 2021	10,797	2,855	21,536	24,391.00	Brine+Main Steam	24391.00
25 Mar 2021	10,851	2,750	21,544	24,294.00	Brine+Main Steam	24294.00
26 Mar 2021	10,916	2,516	21,528	24,044.00	Brine+Main Steam	24044.00
27 Mar 2021	10,899	3,017	21,540	24,557.00	Brine+Main Steam	24557.00
28 Mar 2021	10,699	2,708	21,540	24,248.00	Brine+Main Steam	24248.00
29 Mar 2021	10,836	2,712	21,420	24,132.00	Brine+Main Steam	24132.00
30 Mar 2021	11,506	2,728	21,540	24,268.00	Brine+Main Steam	24268.00
31 Mar 2021	11,188	2,734	21,528	24,262.00	Brine+Main Steam	24262.00
01 Apr 2021	10,804	2,730	21,544	24,274.00	Brine+Main Steam	24274.00
02 Apr 2021	10,839	2,515	21,536	24,051.00	Brine+Main Steam	24051.00
03 Apr 2021	10,791	2,855	21,544	24,399.00	Brine+Main Steam	24399.00
04 Apr 2021	10,847	2,731	21,528	24,259.00	Brine+Main Steam	24259.00
05 Apr 2021	10,867	2,683	21,400	24,083.00	Brine+Main Steam	24083.00
06 Apr 2021	11,147	2,697	21,540	24,237.00	Brine+Main Steam	24237.00
07 Apr 2021	10,762	2,699	21,540	24,239.00	Brine+Main Steam	24239.00
08 Apr 2021	10,665	2,690	21,540	24,230.00	Brine+Main Steam	24230.00
09 Apr 2021	11,354	2,696	21,532	24,228.00	Brine+Main Steam	24228.00
10 Apr 2021	11,278	2,669	21,536	24,205.00	Brine+Main Steam	24205.00
11 Apr 2021	11,286	2,673	21,544	24,217.00	Brine+Main Steam	24217.00
12 Apr 2021	11,510	2,350	21,456	23,806.00	Brine+Main Steam	23806.00
13 Apr 2021	11,836	2,451	21,544	23,995.00	Brine+Main Steam	23995.00
14 Apr 2021	11,830	2,559	21,536	24,095.00	Brine+Main Steam	24095.00
15 Apr 2021	12,470	2,704	21,532	24,236.00	Brine+Main Steam	24236.00
16 Apr 2021	13,292	2,453	21,540	23,993.00	Brine+Main Steam	23993.00
17 Apr 2021	13,248	2,536	21,540	24,076.00	Brine+Main Steam	24076.00
18 Apr 2021	13,199	2,434	21,540	23,974.00	Brine+Main Steam	23974.00

Date	Mso,i,y	Msb,y	Msv,y	Msb,y + Msv,y	M _{s,conservative}	M _s
	Wells	Brine	Main steam	Brine+Main Steam	Wells/Brine+Main Steam	Tons
19 Apr 2021	14,290	2,426	21,420	23,846.00	Brine+Main Steam	23846.00
20 Apr 2021	14,375	2,438	21,500	23,938.00	Brine+Main Steam	23938.00
21 Apr 2021	14,640	2,484	21,512	23,996.00	Brine+Main Steam	23996.00
22 Apr 2021	14,549	2,466	21,528	23,994.00	Brine+Main Steam	23994.00
23 Apr 2021	14,397	2,402	21,500	23,902.00	Brine+Main Steam	23902.00
24 Apr 2021	14,177	2,454	21,060	23,514.00	Brine+Main Steam	23514.00
25 Apr 2021	14,117	2,350	21,488	23,838.00	Brine+Main Steam	23838.00
26 Apr 2021	14,432	2,355	21,412	23,767.00	Brine+Main Steam	23767.00
27 Apr 2021	14,310	2,356	21,532	23,888.00	Brine+Main Steam	23888.00
28 Apr 2021	13,812	2,373	21,536	23,909.00	Brine+Main Steam	23909.00
29 Apr 2021	10,710	2,446	21,412	23,858.00	Brine+Main Steam	23858.00
30 Apr 2021	10,005	2,568	21,540	24,108.00	Brine+Main Steam	24108.00
01 May 2021	10,099	2,607	21,540	24,147.00	Brine+Main Steam	24147.00
02 May 2021	10,028	2,525	21,532	24,057.00	Brine+Main Steam	24057.00
03 May 2021	11,397	2,415	21,416	23,831.00	Brine+Main Steam	23831.00
04 May 2021	11,574	2,847	21,544	24,391.00	Brine+Main Steam	24391.00
05 May 2021	11,289	2,773	21,536	24,309.00	Brine+Main Steam	24309.00
06 May 2021	11,226	2,818	21,544	24,362.00	Brine+Main Steam	24362.00
07 May 2021	10,796	2,932	21,528	24,460.00	Brine+Main Steam	24460.00
08 May 2021	10,934	2,873	21,540	24,413.00	Brine+Main Steam	24413.00
09 May 2021	11,095	2,898	21,540	24,438.00	Brine+Main Steam	24438.00
10 May 2021	11,478	2,888	21,440	24,328.00	Brine+Main Steam	24328.00
11 May 2021	11,270	2,888	21,540	24,428.00	Brine+Main Steam	24428.00
12 May 2021	11,318	2,922	21,540	24,462.00	Brine+Main Steam	24462.00
13 May 2021	11,448	2,891	21,528	24,419.00	Brine+Main Steam	24419.00
14 May 2021	11,502	2,933	21,532	24,465.00	Brine+Main Steam	24465.00
15 May 2021	11,534	2,964	21,536	24,500.00	Brine+Main Steam	24500.00
16 May 2021	11,614	2,864	21,544	24,408.00	Brine+Main Steam	24408.00

Date	Mso,i,y	Msb,y	Msv,y	Msb,y + Msv,y	M _{s,conservative}	M _s
	Wells	Brine	Main steam	Brine+Main Steam	Wells/Brine+Main Steam	Tons
17 May 2021	11,593	3,032	21,448	24,480.00	Brine+Main Steam	24480.00
18 May 2021	11,556	2,995	21,528	24,523.00	Brine+Main Steam	24523.00
19 May 2021	11,586	2,976	21,544	24,520.00	Brine+Main Steam	24520.00
20 May 2021	11,704	3,053	21,536	24,589.00	Brine+Main Steam	24589.00
21 May 2021	11,827	3,048	21,544	24,592.00	Brine+Main Steam	24592.00
22 May 2021	11,897	3,060	21,528	24,588.00	Brine+Main Steam	24588.00
23 May 2021	11,403	3,076	21,540	24,616.00	Brine+Main Steam	24616.00
24 May 2021	11,458	3,061	21,372	24,433.00	Brine+Main Steam	24433.00
25 May 2021	11,697	3,217	21,536	24,753.00	Brine+Main Steam	24753.00
26 May 2021	11,558	3,413	21,544	24,957.00	Brine+Main Steam	24957.00
27 May 2021	11,279	3,828	21,536	25,364.00	Brine+Main Steam	25364.00
28 May 2021	11,032	3,892	21,532	25,424.00	Brine+Main Steam	25424.00
29 May 2021	11,218	3,900	21,540	25,440.00	Brine+Main Steam	25440.00
30 May 2021	10,908	3,888	21,540	25,428.00	Brine+Main Steam	25428.00
31 May 2021	11,302	3,892	21,400	25,292.00	Brine+Main Steam	25292.00
01 Jun 2021	10,998	4,106	21,540	25,646.00	Brine+Main Steam	25646.00
02 Jun 2021	11,097	4,111	21,528	25,639.00	Brine+Main Steam	25639.00
03 Jun 2021	11,150	4,164	21,544	25,708.00	Brine+Main Steam	25708.00
04 Jun 2021	11,263	4,221	21,528	25,749.00	Brine+Main Steam	25749.00
05 Jun 2021	11,183	4,192	21,540	25,732.00	Brine+Main Steam	25732.00
06 Jun 2021	11,170	4,239	21,540	25,779.00	Brine+Main Steam	25779.00
07 Jun 2021	11,086	4,250	21,420	25,670.00	Brine+Main Steam	25670.00
08 Jun 2021	8,822	4,245	21,540	25,785.00	Brine+Main Steam	25785.00
09 Jun 2021	9,105	4,342	21,540	25,882.00	Brine+Main Steam	25882.00
10 Jun 2021	12,682	4,388	21,540	25,928.00	Brine+Main Steam	25928.00
11 Jun 2021	14,583	4,463	21,540	26,003.00	Brine+Main Steam	26003.00
12 Jun 2021	14,837	4,475	21,532	26,007.00	Brine+Main Steam	26007.00
13 Jun 2021	14,471	4,473	21,536	26,009.00	Brine+Main Steam	26009.00

Date	Mso,i,y	Msb,y	Msv,y	Msb,y + Msv,y	M _{s,conservative}	M _s
	Wells	Brine	Main steam	Brine+Main Steam	Wells/Brine+Main Steam	Tons
14 Jun 2021	14,745	4,463	21,432	25,895.00	Brine+Main Steam	25895.00
15 Jun 2021	13,933	4,437	21,540	25,977.00	Brine+Main Steam	25977.00
16 Jun 2021	14,556	5,806	21,532	27,338.00	Brine+Main Steam	27338.00
17 Jun 2021	14,120	4,541	21,536	26,077.00	Brine+Main Steam	26077.00
18 Jun 2021	14,176	4,606	21,544	26,150.00	Brine+Main Steam	26150.00
19 Jun 2021	14,158	4,628	21,536	26,164.00	Brine+Main Steam	26164.00
20 Jun 2021	14,421	4,622	21,532	26,154.00	Brine+Main Steam	26154.00
21 Jun 2021	14,192	4,614	21,428	26,042.00	Brine+Main Steam	26042.00
22 Jun 2021	14,434	4,582	21,532	26,114.00	Brine+Main Steam	26114.00
23 Jun 2021	14,500	4,062	21,540	25,602.00	Brine+Main Steam	25602.00
24 Jun 2021	14,404	3,929	21,540	25,469.00	Brine+Main Steam	25469.00
25 Jun 2021	14,380	3,979	21,540	25,519.00	Brine+Main Steam	25519.00
26 Jun 2021	14,539	3,968	21,540	25,508.00	Brine+Main Steam	25508.00
27 Jun 2021	14,576	3,947	21,540	25,487.00	Brine+Main Steam	25487.00
28 Jun 2021	14,497	3,937	21,448	25,385.00	Brine+Main Steam	25385.00
29 Jun 2021	14,577	3,913	21,544	25,457.00	Brine+Main Steam	25457.00
30 Jun 2021	14,385	3,935	21,528	25,463.00	Brine+Main Steam	25463.00

Annex 4. Monitoring Equipment

Tag Number	Brand (serial number)			Calib. Report XXI		Calib. Report XXII		Calib. Report XXIII		Calib. Report XXIV		Calib. Report XXV		Calib. Report XXVI		Calib. Report XXVII		Calib. Report XXVIII		Remarks
		By	Certificate Number	Calibration Date	Validity	Calibration Date	Validity	Calibration Date	Validity	Calibration Date	Validity	Calibration Date	Validity	Calibration Date	Validity	Calibration Date	Validity	Calibration Date	Validity	
A2-FIT-0106	Yokogawa (S/N 91L410293)			05/12/2017	05/06/2018	05/06/2018	05/12/2018	05/12/2018	05/06/2019	05/06/2019	04/12/2019	05/12/2019	04/06/2020	05/06/2020	04/12/2020	05/12/2020	06/06/2021	05/06/2021	05/12/2021	Steam flow to WW-2 turbine

CDM-MR-FORM

Tag Number	Brand (serial number)			Calib. Report XXI		Calib. Report XXII		Calib. Report XXIII		Calib. Report XXIV		Calib. Report XXV		Calib. Report XXVI		Calib. Report XXVII		Calib. Report XXVIII		Remarks
		By	Certificate Number	Calibration Date	Validity	Calibration Date	Validity	Calibration Date	Validity	Calibration Date	Validity	Calibration Date	Validity	Calibration Date	Validity	Calibration Date	Validity	Calibration Date	Validity	
FIT-2301	Rosemount (S/N 01830354)			03/12/2017	04/06/2018	03/06/2018	03/12/2018	03/12/2018	03/06/2019	Yokogawa EJX110A (S/N 91V517480-921-7) 03/06/2019	03/12/2019	03/12/2019	03/06/2020	03/06/2020	03/12/2020	03/12/2020	03/06/2021	03/06/2021	03/12/2021	MBB-1 Well steam flow
PIT-2302	Rosemount (S/N 01830135)	SE G(W) W(L) Internal lab	N/A	02/12/2017	02/06/2018	02/06/2018	02/12/2018	02/12/2018	02/06/2019	02/06/2019	02/12/2019	02/12/2019	02/06/2020	02/06/2020	02/12/2020	02/12/2020	02/06/2021	02/06/2021	01/12/2021	
FIT-2302	Rosemount (S/N 02990632)			05/12/2017	05/06/2018	05/06/2018	05/12/2018	05/12/2018	05/06/2019	05/06/2019	05/12/2019	05/12/2019	05/06/2020	05/06/2020	05/12/2020	05/12/2020	05/06/2021	05/06/2021	05/12/2021	MBB-2 Well steam flow
PIT-2304	Rosemount (S/N 02990636)	SE G(W) W(L) Internal lab	N/A	03/12/2017	04/06/2018	03/06/2018	03/12/2018	03/12/2018	03/06/2019	03/06/2019	03/12/2019	03/12/2019	03/06/2020	03/06/2020	03/12/2020	03/12/2020	03/06/2021	03/06/2021	02/12/2021	
FIT-2303	Rosemount (S/N 02990633)			06/12/2017	06/06/2018	06/06/2018	06/12/2018	06/12/2018	06/06/2019	06/06/2019	06/12/2019	06/12/2019	06/06/2020	06/06/2020	06/12/2020	06/12/2020	06/06/2021	06/06/2021	06/12/2021	MBB-3 Well steam flow
PIT-2306	Rosemount (S/N 02990637)	SE G(W) W(L) Internal lab	N/A	05/12/2017	05/06/2018	05/06/2018	05/12/2018	05/12/2018	05/06/2019	05/06/2019	05/12/2019	05/12/2019	05/06/2020	05/06/2020	05/12/2020	05/12/2020	05/06/2021	05/06/2021	05/12/2021	
FIT-2304	Rosemount (S/N 02990634)			06/12/2017	06/06/2018	06/06/2018	06/12/2018	06/12/2018	06/06/2019	06/06/2019	06/12/2019	06/12/2019	06/06/2020	06/06/2020	06/12/2020	06/12/2020	06/06/2021	03/06/2021	03/12/2021	MBB-4 Well steam flow
PIT-2308	Rosemount (S/N 02990638)	SE G(W) W(L) Internal lab	N/A	03/12/2017	04/06/2018	03/06/2018	03/12/2018	03/12/2018	03/06/2019	03/06/2019	03/12/2019	03/12/2019	03/06/2020	03/06/2020	03/12/2020	03/12/2020	03/06/2021	03/06/2021	03/12/2021	
FIT-2305	Rosemount (S/N 02990635)			07/12/2017	08/06/2018	07/06/2018	07/12/2018	07/12/2018	07/06/2019	07/06/2019	07/12/2019	07/12/2019	07/06/2020	07/06/2020	07/12/2020	07/12/2020	07/06/2021	07/06/2021	07/12/2021	MBB-5 Well steam flow

CDM-MR-FORM

Tag Number	Brand (serial number)			Calib. Report XXI		Calib. Report XXII		Calib. Report XXIII		Calib. Report XXIV		Calib. Report XXV		Calib. Report XXVI		Calib. Report XXVII		Calib. Report XXVIII		Remarks
		By	Certificate Number	Calibration Date	Validity	Calibration Date	Validity	Calibration Date	Validity	Calibration Date	Validity	Calibration Date	Validity	Calibration Date	Validity	Calibration Date	Validity	Calibration Date	Validity	
PIT-2310	Rosemount (S/N 02990639)	SE G(W)W/L Internal lab	N/A	07/12/2017	08/06/2018	07/06/2018	07/12/2018	07/12/2018	07/06/2019	07/06/2019	07/12/2019	07/12/2019	07/06/2020	07/06/2020	07/12/2020	07/12/2020	07/06/2021	07/06/2021	07/12/2021	
FIT-2501	Rosemount (S/N 01830374)	SE G(W)W/L Internal lab	N/A	02/12/2017	02/06/2018	02/06/2018	02/12/2018	02/12/2018	02/06/2019	02/06/2019	02/12/2019	02/12/2019	02/06/2020	02/06/2020	02/12/2020	02/12/2020	02/06/2021	02/06/2021	02/12/2021	MBA-1 Well steam flow
PIT-2502	Rosemount (S/N 01830130)	SE G(W)W/L Internal lab	N/A	01/12/2017	01/06/2018	01/06/2018	01/12/2018	01/12/2018	01/06/2019	01/06/2019	01/12/2019	01/12/2019	01/06/2020	01/06/2020	01/12/2020	01/12/2020	01/06/2021	01/06/2021	01/12/2021	
FIT-2502	Rosemount (S/N 02065517)			01/12/2017	01/06/2018	01/06/2018	01/12/2018	01/12/2018	01/06/2019	01/06/2019	01/12/2019	01/12/2019	01/06/2020	01/06/2020	30/11/2020	01/12/2020	01/06/2021	01/06/2021	01/12/2021	MBA-2 Well steam flow
PIT-2504	Rosemount (S/N 01830131)	SE G(W)W/L Internal lab	N/A	01/12/2017	01/06/2018	01/06/2018	01/12/2018	01/12/2018	01/06/2019	01/06/2019	01/12/2019	01/12/2019	01/06/2020	01/06/2020	01/12/2020	01/12/2020	01/06/2021	01/06/2021	01/12/2021	
FIT-2503	Rosemount (S/N 01830360)	SE G(W)W/L Internal lab	N/A	02/12/2017	02/06/2018	02/06/2018	02/12/2018	02/12/2018	02/06/2019	02/06/2019	02/12/2019	02/12/2019	02/06/2020	02/06/2020	02/12/2020	02/12/2020	02/06/2021	02/06/2021	01/12/2021	MBA-3 Well steam flow
PIT-2506	Rosemount (S/N 01830132)	SE G(W)W/L Internal lab	N/A	02/12/2017	02/06/2018	02/06/2018	02/12/2018	02/12/2018	02/06/2019	02/06/2019	02/12/2019	02/12/2019	02/06/2020	02/06/2020	02/12/2020	02/12/2020	02/06/2021	02/06/2021	01/12/2021	
FIT-2504	Rosemount (S/N 01830361)	SE G(W)W/L Internal lab	N/A	02/12/2017	02/06/2018	02/06/2018	02/12/2018	02/12/2018	02/06/2019	02/06/2019	02/12/2019	02/12/2019	02/06/2020	02/06/2020	02/12/2020	02/12/2020	02/06/2021	02/06/2021	01/12/2021	MBA-4 Well steam flow
PIT-2508	Rosemount (S/N 01830133)	SE G(W)W/L Internal lab	N/A	01/12/2017	01/06/2018	01/06/2018	01/12/2018	01/12/2018	01/06/2019	01/06/2019	01/12/2019	01/12/2019	01/06/2020	01/06/2020	01/12/2020	01/12/2020	01/06/2021	01/06/2021	30/11/2021	
FIT-2505	Rosemount (S/N 01830359)	SE G(W)W/L Internal lab	N/A	01/12/2017	01/06/2018	30/05/2018	29/11/2018	30/11/2018	31/05/2019	30/05/2019	30/11/2019	30/11/2019	30/05/2020	30/05/2020	29/11/2020	30/11/2020	31/05/2021	30/05/2021	28/11/2021	MBA-5 Well steam flow

CDM-MR-FORM

Tag Number	Brand (serial number)			Calib. Report XXI		Calib. Report XXII		Calib. Report XXIII		Calib. Report XXIV		Calib. Report XXV		Calib. Report XXVI		Calib. Report XXVII		Calib. Report XXVIII		Remarks
		By	Certificate Number	Calibration Date	Validity	Calibration Date	Validity	Calibration Date	Validity	Calibration Date	Validity	Calibration Date	Validity	Calibration Date	Validity	Calibration Date	Validity	Calibration Date	Validity	
PIT-2510	Rosemount (S/N 01830134)	SE G(W) L Internal lab	N/A	01/12/2017	01/06/2018	01/06/2018	01/12/2018	01/12/2018	01/06/2019	01/06/2019	01/12/2019	01/12/2019	01/06/2020	01/06/2020	01/12/2020	01/12/2020	01/06/2021	01/06/2021	30/11/2021	
FIT501	Rosemount (S/N 01845811)	SE G(W) L Internal lab	N/A	02/12/2017	02/06/2018	02/06/2018	02/12/2018	02/12/2018	02/06/2019	02/06/2019	02/12/2019	02/12/2019	02/06/2020	02/06/2020	02/12/2020	02/12/2020	02/06/2021	02/06/2021	01/12/2021	MBD-5 Well steam flow
PIT506	Rosemount (S/N 01593780)	SE G(W) L Internal lab	N/A	02/12/2017	02/06/2018	02/06/2018	02/12/2018	02/12/2018	02/06/2019	02/06/2019	02/12/2019	02/12/2019	02/06/2020	02/06/2020	02/12/2020	02/12/2020	02/06/2021	02/06/2021	01/12/2021	
FIT-984	Yokogawa (S/N 91M523067)																			WWW-1 Brine Injection Well
PIT-918	Bailey (S/N 8F196683)	SE G(W) L Internal lab	N/A																	
FIT-980	Bailey PTHDDD (S/N 8G199082)			04/12/2017	04/06/2018	04/06/2018	04/12/2018	04/12/2018	04/06/2019	04/06/2019	04/12/2019	04/12/2019	04/06/2020	04/06/2020	04/12/2020	04/12/2020	04/06/2021	04/06/2021	03/12/2021	WWF-3 Brine Injection Well
PIT-799	Yokogawa, EJX530A (S/N 91M523084)	SE G(W) L Internal lab	N/A	04/12/2017	04/06/2018	04/06/2018	04/12/2018	04/12/2018	04/06/2019	04/06/2019	04/12/2019	04/12/2019	04/06/2020	04/06/2020	04/12/2020	04/12/2020	04/06/2021	04/06/2021	03/12/2021	
AO-FQ-2033	Fill Rite 900 Series (Y0194)																			Emergency diesel generator
AO-FQ-2033	Tokico FGBB835-BDL-04-X																			

CDM-MR-FORM

Tag Number	Brand (serial number)			Calib. Report XXI		Calib. Report XXII		Calib. Report XXIII		Calib. Report XXIV		Calib. Report XXV		Calib. Report XXVI		Calib. Report XXVII		Calib. Report XXVIII		Remarks
		By	Certificate Number	Calibration Date	Validity	Calibration Date	Validity	Calibration Date	Validity	Calibration Date	Validity	Calibration Date	Validity	Calibration Date	Validity	Calibration Date	Validity	Calibration Date	Validity	
	(S/N LL 60223)			15/09/2017								29/08/2019				28/09/2020				
AO-FQ-2032	Fill Rite 800 Series (4905C)																			
AO-FQ-2032	Tokico FG8835-BDL-04-X (S/N LL 60217)			18/09/2017				Tokico FG8835-BDL-04-X (S/N OF13532) 12/12/2018				29/08/2019				28/09/2020				Fire pump
-	Schneider ION8600 (MT-0809A063-01)					10/10/2018	10/10/2023													
-	ION 8600 (PT-0807A249-01)					04/09/2018	09/04/2020							Calibration postponed until 8 Nov 2021 due to Covid-19 issue						WW-1 electricity meter
-	Schneider ION8600 (MT-0806A388-01)					10/10/2018	10/10/2023													WW-2 electricity meter

CDM-MR-FORM

Tag Number	Brand (serial number)			Calib. Report XXI		Calib. Report XXII		Calib. Report XXIII		Calib. Report XXIV		Calib. Report XXV		Calib. Report XXVI		Calib. Report XXVII		Calib. Report XXVIII		Remarks
		By	Certificate Number	Calibration Date	Validity	Calibration Date	Validity	Calibration Date	Validity	Calibration Date	Validity	Calibration Date	Validity	Calibration Date	Validity	Calibration Date	Validity	Calibration Date	Validity	
-	ION 8600 (PT-0802A194-01)	Lab orat oriu m Kali bras i PT PLN (Per sero) Pus at Pen elitia nda n Pen gem ban gan Kete nag alist rika n (Ext erna l lab)	1610.21.B TND.359B /09.09			04/09/2018	09/04/2020							Calibration postponed until 8 Nov 2021 due to Covid-19 issue						

Annex 5. Monthly generation data from Wayang Windu Phase 1 and Wayang Windu Phase 2 geothermal power project (EG), Monthly generation data from Wayang Windu Phase 1 (EGexisting), Quantity of steam produced (Ms), and Project emissions from steam produced (PES) during Monitoring Period.

EG _{wayang windu unit 2}		Main Meter
		Downloaded monthly from kWh meter
		MWh
Dec-17		77,888.69
Jan-18		82,377.89
Feb-18		73,625.97
Mar-18		81,582.71

EG _{wayang windu unit 2}	Main Meter Downloaded monthly from kWh meter MWh
Apr-18	79,355.25
May-18	81,224.43
Jun-18	78,636.83
Jul-18	81,485.45
Aug-18	81,569.79
Sep-18	79,286.77
Oct-18	81,654.73
Nov-18	78,293.34
Dec-18	80,915.15
Jan-19	81,059.529
Feb-19	72,954.193
Mar-19	80,849.644
Apr-19	78,090.928
May-19	79,687.158
Jun-19	76,237.868
Jul-19	80,995.870
Aug-19	80,888.689
Sep-19	79,108.872
Oct-19	81,989.893
Nov-19	79,058.736
Dec-19	81,281.673
Jan-20	81,583.568
Feb-20	75,602.684
Mar-20	80,778.840
Apr-20	77,895.177
May-20	80,489.087

EG _{wayang windu unit 2}	Main Meter Downloaded monthly from kWh meter MWh
Jun-20	78,011.325
Jul-20	80,705.099
Aug-20	80,786.827
Sep-20	78,179.334
Oct-20	80,805.602
Nov-20	78,113.143
Dec-20	81,117.904
Jan-21	80,609.450
Feb-21	73,525.595
Mar-21	80,374.746
Apr-21	77,749.822
May-21	80,628.314
Jun-21	78,169.289

EG _{wayang windu unit 1}	Main Meter Downloaded monthly from kWh meter MWh
Dec-17	76,600.13
Jan-18	80,706.83
Feb-18	72,178.67
Mar-18	79,565.46
Apr-18	77,247.90

EG _{wayang windu unit 1}	Main Meter Downloaded monthly from kWh meter MWh
May-18	78,772.52
Jun-18	76,009.45
Jul-18	79,328.32
Aug-18	79,355.64
Sep-18	77,483.27
Oct-18	79,419.60
Nov-18	76,217.83
Dec-18	78,962.98
Jan-19	78,956.609
Feb-19	71,014.210
Mar-19	78,691.485
Apr-19	75,983.514
May-19	78,670.177
Jun-19	54,553.339
Jul-19	71,507.092
Aug-19	79,838.233
Sep-19	78,167.905
Oct-19	80,864.716
Nov-19	77,912.433
Dec-19	80,271.750
Jan-20	80,700.553
Feb-20	74,249.780
Mar-20	74,626.991
Apr-20	76,982.819
May-20	79,331.944
Jun-20	76,863.769

EG _{wayang windu unit 1}		Main Meter
		Downloaded monthly from kWh meter
		MWh
Jul-20		79,394.103
Aug-20		79,491.275
Sep-20		76,836.293
Oct-20		79,363.879
Nov-20		76,947.942
Dec-20		78,779.926
Jan-21		79,601.939
Feb-21		67,746.352
Mar-21		79,868.456
Apr-21		77,176.331
May-21		79,924.349
Jun-21		77,383.833

Annex 6. Fuel consumption by meter diesel

Fuel consumption by meter diesel:

Period	EDG (liters)	Fire Pump (liters)	Total Diesel Consumption [liters]
01/12/2017 - 31/12/2017	465	70	535
01/01/2018 - 31/01/2018	476	64	540
01/02/2018 - 28/02/2018	488	75	563
01/03/2018 - 31/03/2018	497	73	570
01/04/2018 - 30/04/2018	430	53	483
01/05/2018 - 31/05/2018	430	72	502
01/06/2018 - 30/06/2018	410	74	484
01/07/2018 - 31/07/2018	479	77	556
01/08/2018 - 31/08/2018	499	72	571
01/09/2018 - 30/09/2018	461.295	57.285	518.58
01/10/2018 - 31/10/2018	472.35	59.295	531.65
01/11/2018 - 30/11/2018	441.195	78.39	519.59
01/12/2018 - 31/12/2018	472.35	71.355	543.71
01/01/2019 - 31/01/2019	478.38		478.38
01/02/2019 - 28/02/2019	512.55		512.55
01/03/2019 - 31/03/2019	472.35		472.35
01/04/2019 - 30/04/2019	469.335		469.34
01/05/2019 - 31/05/2019	498.48		498.48
01/06/2019 - 30/06/2019	472.35		472.35
01/07/2019 - 31/07/2019	484.41		484.41
01/08/2019 - 31/08/2019	470.34		470.34
01/09/2019 - 30/09/2019	492.45	73.365	565.82
01/10/2019 - 31/10/2019	439	58	497
01/11/2019 - 30/11/2019	481	76	557
01/12/2019 - 31/12/2019	489	56	545
01/01/2020 - 31/01/2020	438	78	516
01/02/2020 - 28/02/2020	431	59	490
01/03/2020 - 31/03/2020	502	73	575
01/04/2020 - 30/04/2020	495	53	548
01/05/2020 - 31/05/2020	480	75	555
01/06/2020 - 30/06/2020	410	58	468
01/07/2020 - 31/07/2020	438	72	510
01/08/2020 - 31/08/2020	482	64	546

Period	EDG (liters)	Fire Pump (liters)	Total Diesel Consumption [liters]
01/09/2020 - 30/09/2020	475	74	549
01/10/2020 - 31/10/2020	463	61	524
01/11/2020 - 30/11/2020	485	76	561
01/12/2020 - 31/12/2020	492	65	557
01/01/2021 - 31/01/2021	482	73	555
01/02/2021 - 28/02/2021	425	64	489
01/03/2021 - 31/03/2021	438	79	517
01/04/2021 - 30/04/2021	440	57	497
01/05/2021 - 31/05/2021	475	78	553
01/06/2021 - 30/06/2021	457	76	533
Total	20089	2395	22484

Document information

<i>Version</i>	<i>Date</i>	<i>Description</i>
08.0	6 April 2021	Revision to: <ul style="list-style-type: none"> • Reflect the “Clarification: Regulatory requirements under temporary measures for post-2020 cases” (CDM-EB109-A01-CLAR).
07.0	31 May 2019	Revision to: <ul style="list-style-type: none"> • Ensure consistency with version 02.0 of the “CDM project standard for project activities” (CDM-EB93-A04-STAN); • Add a section on remarks on the observance of the scale limit of small-scale project activity during the crediting period; • Add "changes specific to afforestation or reforestation project activity" as a possible post-registration changes; • Clarify the reporting of net anthropogenic GHG removals for A/R project activities between two commitment periods; • Make editorial improvements.
06.0	7 June 2017	Revision to: <ul style="list-style-type: none"> • Ensure consistency with version 01.0 of the “CDM project standard for project activities” (CDM-EB93-A04-STAN); • Make editorial improvements.
05.1	4 May 2015	Editorial revision to correct version numbering.
05.0	1 April 2015	Revisions to: <ul style="list-style-type: none"> • Include provisions related to delayed submission of a monitoring plan; • Provisions related to the Host Party; • Remove reference to programme of activities; • Overall editorial improvement.
04.0	25 June 2014	Revisions to: <ul style="list-style-type: none"> • Include the Attachment: Instructions for filling out the monitoring report form (these instructions supersede the "Guideline: Completing the monitoring report form" (Version 04.0)); • Include provisions related to standardized baselines; • Add contact information on a responsible person(s)/ entity(ies) for completing the CDM-MR-FORM in A.6 and Appendix 1; • Change the reference number from <i>F-CDM-MR</i> to <i>CDM-MR-FORM</i>; • Editorial improvement.
03.2	5 November 2013	Editorial revision to correct table in page 1.
03.1	2 January 2013	Editorial revision to correct table in section E.5.
03.0	3 December 2012	Revision required to introduce a provision on reporting actual emission reductions or net GHG removals by sinks for the period up to 31 December 2012 and the period from 1 January 2013 onwards (EB 70, Annex 11).

<i>Version</i>	<i>Date</i>	<i>Description</i>
02.0	13 March 2012	Revision required to ensure consistency with the "Guidelines for completing the monitoring report form" (EB 66, Annex 20).
01.0	28 May 2010	EB 54, Annex 34. Initial adoption.
Decision Class: Regulatory Document Type: Form Business Function: Issuance Keywords: monitoring report		