



Monitoring report form
(Version 04.0)

Complete this form in accordance with the Attachment "Instructions for filling out the monitoring report form" at the end of this form.

MONITORING REPORT

Title of the project activity	Wayang Windu Phase 2 Geothermal Power Project
Reference number of the project activity	3193
Version number of the monitoring report	01
Completion date of the monitoring report	12/1/2015
Registration date of the project activity	02/12/2010
Monitoring period number and duration of this monitoring period	Monitoring period number 5. Duration of this monitoring period (first and last days included): 01/01/13 – 31/12/14
Project participant(s)	Star Energy Geothermal (Wayang Windu) Ltd Sindicatum Carbon Capital Ltd
Host Party(ies)	Republic of Indonesia
Sectoral scope and selected methodology(ies), and where applicable, applied standardized baseline(s)	Sectoral scope: 1- Energy industries (renewable/ non-renewable sources) Methodology: ACM0002 version 9 - Consolidated methodology for grid-connected electricity generation from renewable sources
Estimated amount of GHG emission reductions or net anthropogenic GHG removals by sinks for this monitoring period in the registered PDD	1,589,664 tCO ₂ e
Actual GHG emission reductions or net anthropogenic GHG removals by sinks achieved in this monitoring period	1,503,029 tCO ₂ e
Actual GHG emission reductions or net anthropogenic GHG removals by sinks achieved during the period up to 31 December 2012(if applicable)	Not Applicable
Actual GHG emission reductions or net anthropogenic GHG removals by sinks achieved during the period from 1 January 2013 onwards (if applicable).	1,503,029 tCO ₂ e

SECTION A. Description of project activity

A.1. Purpose and general description of project activity

>>

The purpose of the project activity is the generation of power using a reliable and renewable resource in place of power generation by a more greenhouse gas intensive fuel/source. The project reduces greenhouse gas emissions through the displacement of fossil fuel electricity generation with a clean, renewable energy source.

The project activity, Wayang Windu Phase 2 Geothermal Power Project, involves the installation of the additional main 117 MW steam turbine and peripheral equipment to enable the turbine to be driven by the steam produced by the Wayang Windu geothermal fields. The turbine is connected to a generator which would produce the electricity to the JAMALI grid, and hence adding the electricity capacity of the existing Wayang Windu Phase 1.

Wayang Windu Phase 1 has been producing power since June 2000, supplying 110 MW of electricity into the national grid through a single buyer, PLN.

The baseline scenario for this project is the generation of electricity by the operation of grid-connected power plants and by the addition of new generation sources. In the absence of the project activity electricity will continue to be generated by the existing generation units in the JAMALI grid.

The date when the EPC contract was signed was considered as the starting date of the project activity, i.e. on 30/01/2007. Project construction start date is 30/01/2007 and the commercial operation of the project started from 04/03/2009 and has been continually operating since that date, apart from shut downs or scheduled maintenance. The project activity is currently in the operational phase and has been registered with the United Nations Framework Convention on Climate Change (UNFCCC) as a CDM project activity (Reference No. 3193) on 02/12/2010 with four monitoring periods from 02/12/10 to 31/12/12 verified before this current monitoring period. The details can be viewed on <http://cdm.unfccc.int/Projects/DB/TUEV-SUED1260194062.48/view>

The total emission reductions achieved in this monitoring period is 1,503,029 tCO₂e.

A.2. Location of project activity

>>

Wayang Windu Geothermal Power Plant is located in Pangalengan approximately 40 km south of Bandung, West Java in Indonesia. 7° 12' 26.79" S, 107° 37' 44.12" E



Figure 1 Location of Bandung



Figure 2 Location of Wayang Windu

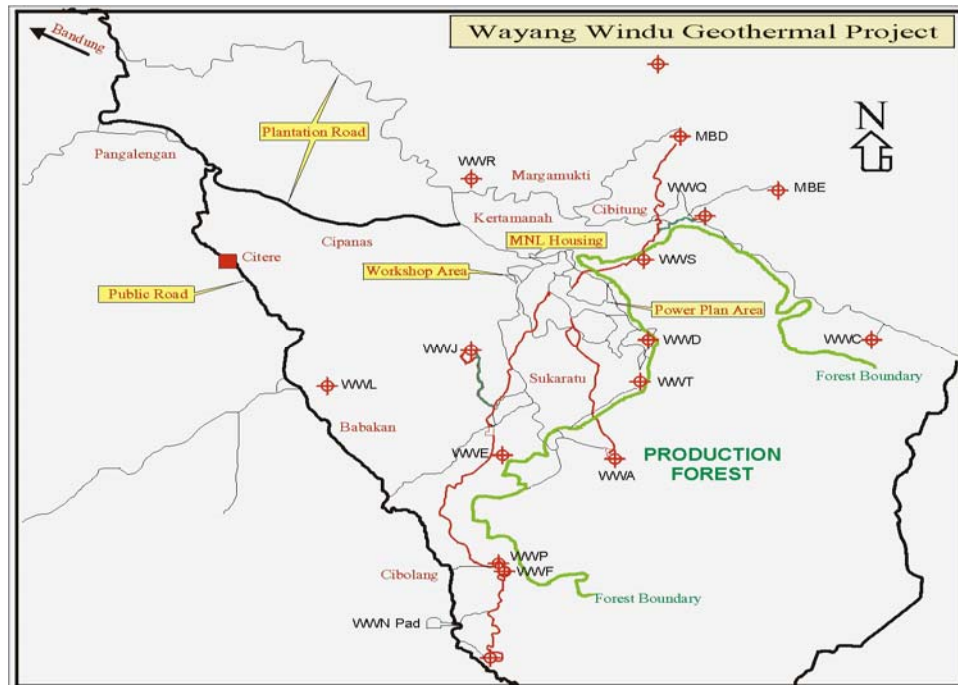


Figure 3 Location of the Wayang Windu Wells and Plant

A.3. Parties and project participant(s)

Party involved (host) indicates a host Party)	Private and/or public entity(ies) project participants (as applicable)	Indicate if the Party involved wishes to be considered as project participant (Yes/No)
Republic of Indonesia (host)	Private entity: Star Energy Geothermal (Wayang Windu) Ltd (MNL)	No
United Kingdom of Great Britain and Northern Ireland	Private entity: Sindicatum Carbon Capital Ltd	No

A.4. Reference of applied methodology and standardized baseline

>>

The applied methodology: ACM0002 "Consolidated methodology for grid-connected electricity generation from renewable sources" (version 9)

This methodology also uses the build margin (BM) and operating margin (OM) approach as specified in:

- "Tool to calculate the emission factor for an electricity system" (Version 01.1)
- "Tool for the demonstration of additionality" (Version 5.2),
- "Tool to calculate project or leakage CO2 emissions from fossil fuel combustion" (Version 02)

More information can be found on the UNFCCC CDM website:

<http://cdm.unfccc.int/methodologies/DB/UB3431UT9I5KN2MUL2FGZXZ6CV71LT>

A.5. Crediting period of project activity

>>

A renewable 7-year crediting period was chosen for the project activity. The start of the crediting period was 02/12/2010. This monitoring period is 01/01/2013 – 31/12/2014 (first and last days included).

A.6. Contact information of responsible persons/ entities

>>

Mr. Jay Mariyappan
Managing Director
Sindicatum Carbon Capital (SCC)
80 Anson Road, #28-02
Fuji Xerox Towers
Singapore
Tel. +65 6732 8897
jay.mariyappan@sindicatum.com

SECTION B. Implementation of project activity

B.1. Description of implemented registered project activity

>>

Geothermal energy in Wayang Windu is stored in a steam reservoir within the earth's crust. Dry saturated steam at high pressure is produced at the surface from wells drilled into this reservoir. The steam is delivered to the power generation facilities through a steam gathering system, to move the turbine blades and drive a generator hence generating electricity. Exhaust steam from the turbine is condensed in a direct contact condenser and part of the condensed exhaust steam is re-injected into the geothermal reservoir, with the remaining being evaporated in the cooling towers. The electricity produced, is transferred by the load dispatcher at the adjacent power switchyard to the transmission lines located outside the power plant.

The power plant consists of a conventional geothermal condensing steam turbine generator with a capacity of 117 MW. Energy of condensation will be transferred to the circulating cooling water system in the steam exhaust condenser and will subsequently be rejected to atmosphere in a conventional mechanical draught cooling tower.

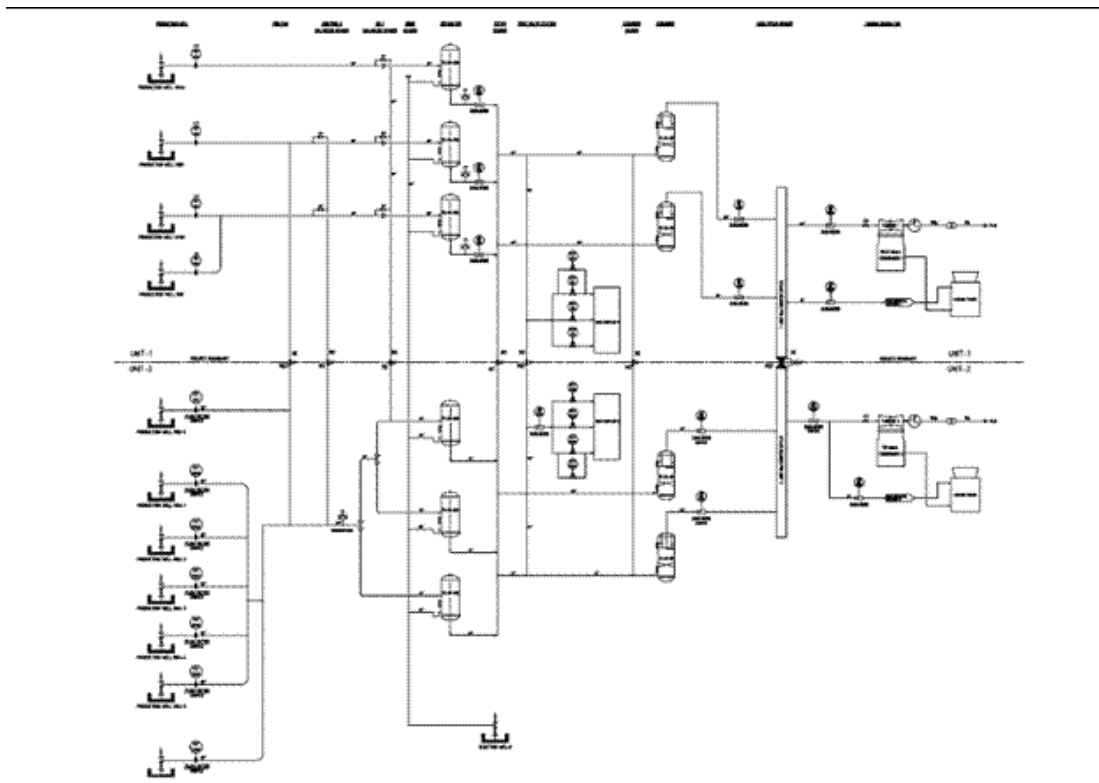


Figure 4 Diagram of the Technical Process (also see Figure 5)

Information on the main equipment:

Main equipment	Steam Turbine	Generator
Manufacturer	Fuji Electric Systems Co. Ltd.	Fuji Electric Systems Co. Ltd.

Type or model no.	Single Casing Condensing	GTLRI544/63-2
Serial number	K1B10159G1	K1B10159L1
Rated capacity or output	117.000 kW	137500 kVA
Rated voltage	-	13800 V
Rated Power Factor	-	0.85 Cos ϕ

The commercial operation of Wayang Windu Phase 2 Geothermal Power Project Plant started from 04/03/2009 and the project activity was registered as a CDM activity on 02/12/2010.

During this monitoring period, planned and unplanned outages occurred to Wayang Windu Phase 1 and 2. Refer to Annex 1 for further details and refer to Annex 4 Monitoring Equipments for calibration activities during this monitoring period.

B.2. Post registration changes

B.2.1. Temporary deviations from registered monitoring plan, applied methodology or applied standardized baseline

>>

No temporary deviations from the registered monitoring plan or applied methodology have been applied for this monitoring period.

B.2.2. Corrections

>>

Not applicable.

B.2.3. Permanent changes from registered monitoring plan, applied methodology or applied standardized baseline

>>

There have been no permanent changes from registered monitoring plan or applied methodology submitted or approved during this monitoring period with this monitoring report.

B.2.4. Changes to project design of registered project activity

>>

There have been no changes to the project design of the project activity submitted or approved during this monitoring period with this monitoring report.

B.2.5. Changes to start date of crediting period

>>

There have been no changes to the start date of crediting period submitted or approved during this monitoring period with this monitoring report.

B.2.6. Types of changes specific to afforestation or reforestation project activity

>>

Not applicable

SECTION C. Description of monitoring system

>>

The location of measurement devices installed is presented in figures 5,6,7,8 below:

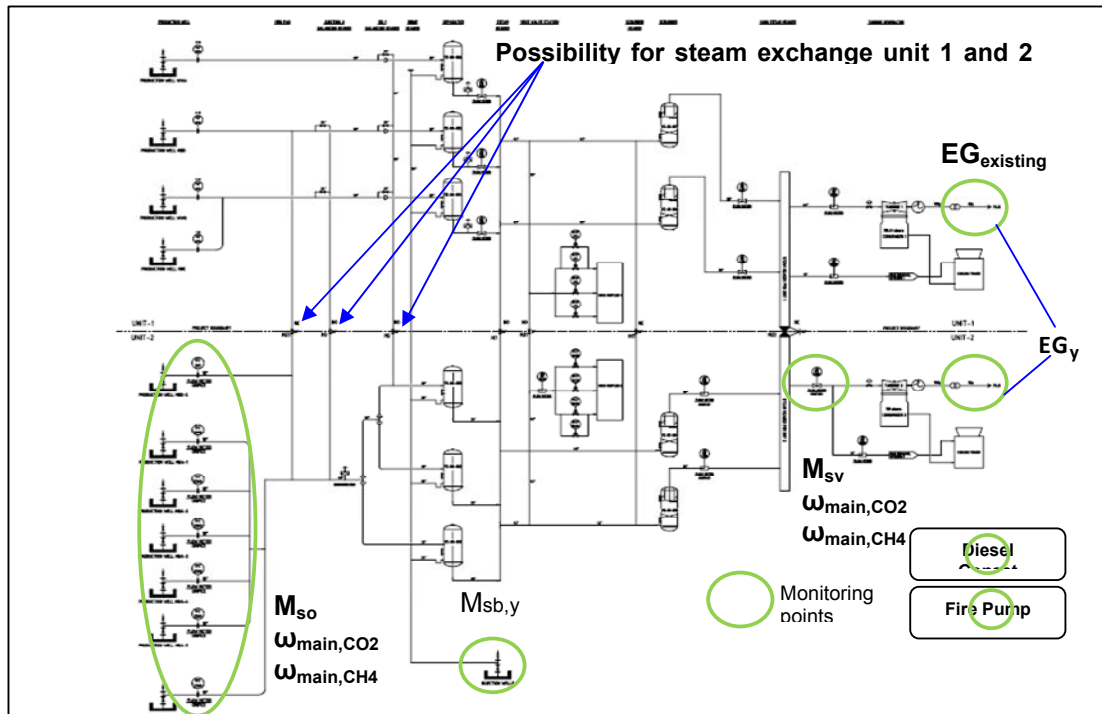


Figure 5 Simplified Process Flow Diagram for Monitoring

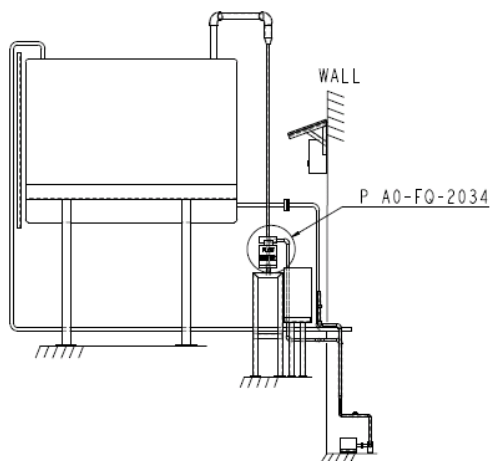


Figure 8 Diesel Generator Set Fuel System

In order to guarantee the quality of the data and data collection system, a detailed monitoring manual has been developed and implemented. This quality manual or monitoring plan (available for verification by a designated operational entity (DOE)) is based upon the requirements set in the registered PDD and addresses as a minimum the items listed below.

Other operation and maintenance procedures developed for the project activity that are related to the monitoring system will be available during verification. Refer to Annex 2 for the list of the procedures.

An overview of the data collection process is provided in table 1 underneath. Detailed formulas for the calculation of emissions are presented in Section E below.

Table 1 Data collection process

Parameter	Reference	Procedure / Frequency	Registration	Check and correct primary measurements
Baseline Emissions	The baseline emissions are calculated using the formulae described in the PDD, section B6.1 - using the CDM spreadsheet.	Primary data (weekly reports) are entered by the SCC officer in the CDM spreadsheet at the start of each month	CDM spreadsheet stored at SCC Project File S-Server	The SCC project officer performs a consistency check based upon previous months. In case of irregularities data is double checked with SEG(WW)L and if needed corrected
Leakage	= 0			
Project Emissions	The project emissions are calculated using the formulae described in the PDD, section B6.1 - using the CDM spreadsheet	Primary data are entered by the SCC officer in the CDM spreadsheet at the start of each month	CDM spreadsheet stored at SCC Project File S-Server	The SCC project officer performs a consistency check based upon previous months. In case of irregularities data is double checked with SEG(WW)L and if needed corrected

Emissions Reductions	The emission reductions are calculated using the formulae described in the PDD, section B6.1 - using the CDM spreadsheet	Primary data (weekly reports) are entered by the SCC officer in the CDM spreadsheet at start of each month	CDM spreadsheet stored at SCC Project File S-Server	The SCC project officer performs a consistency check based upon previous months. In case of irregularities data is double checked with SEG(WW)L and if needed corrected
----------------------	--	--	---	---

Calculation of emissions reduction:

The data required to calculate baseline emissions and project emissions are fed into a protected spreadsheet which calculates the emission reductions according to the formulae described in section E. Access to the spreadsheet is controlled. The spreadsheet is regularly audited to ensure it is operating correctly.

Quality control

Data is compared from month to month using trend analysis to show where parameters have deviated significantly from preceding or following values. Any values identified as being unusual in this manner is rechecked. Where preceding or following values are not available, references values may be taken from published data as appropriate such as 2006 IPCC guideline.

Preparation of monitoring report

The data is used to prepare a periodic monitoring report to be submitted to the CDM EB for verification and issuance of CERs. A standard format for the monitoring report is prepared. Prior to the submission of the first monitoring report, an internal technical review process was conducted and documented before the report was submitted for verification.

Accuracy and calibration of instruments

All meters purchased are maintained to ensure a high level of accuracy. The exact specifications of each meter were determined during the detailed design of the project. Thereafter the meter accuracies are included in this procedure and steps taken to maintain those levels of accuracy. The accuracy levels and procedures are set out in detail on monitoring manual.

All key meters are subjected to a quality control regime that includes regular maintenance and calibration. A record is maintained showing the location and unique identification number of each meter, the calibration status of that meter (when last calibrated, when next due for calibration) and who performs the calibration service. Calibration certificates are retained for all meters until two years after the end of the crediting period.

Archiving of data

The monitoring team periodically archives data to a secure and retrievable storage format on a periodic e.g. weekly basis. Calibration records are archived by scanning and storage in an accessible electronic format. These data are stored until 2 years after the end of the crediting period.

Document Control

The Project Manager implements a document control system that ensures that the current versions of necessary documents are available at the point of use. All documents are maintained in English (with local translations if necessary).

Manual data recording system

The monitoring team implements a manual data recording system to act as a back-up for the online system. This involves completion of a daily log sheet that records electricity meter readings at the start of the day (which is also the end of the previous day).

Treatment of missing or corrupted data

Where data are corrupted or missing whilst the plant is operating, the missing data can be estimated by taking the lower of the average value for the parameter before the error arose.

Audit function and management review

The Project Manager arranges for an audit of the management system periodically and at least once per year. The auditor is not involved in the daily operation of the project and if necessary, may be sourced from a third party. The auditor assesses the implementation of the monitoring procedure and the preparation of the monitoring report. Audit findings, and steps taken to address findings are recorded and reviewed by the management, which also reviews the effectiveness of these procedures and necessary changes implemented.

Organisation & Responsibilities

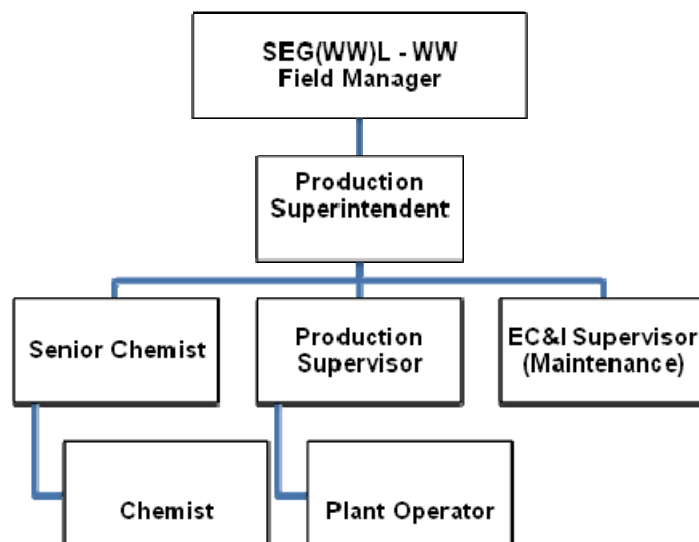
SEG(WW)L

- Wayang Windu Field Manager is responsible for supervision of overall plant operations and management responsibilities
- Production Superintendent is responsible for the preparation of monthly CDM report and supervision of plant productions
- EC&I Supervisor is responsible for maintaining the measurement devices and ensuring calibration of the measurement devices
- Senior Chemist is responsible for checking steam quality information for CDM and submission to SCC
- Chemist is responsible for steam sampling and analysis, checking and recording of steam quality
- Production Supervisor is responsible for external data collection, checking CDM information (excluding steam quality data) and weekly spreadsheet and submission to SCC
- Plant Operators are responsible for meter readings, data recording and other roles as specified by the supervisors

SCC

- Senior Climate Change Officer is responsible for the supervision of overall climate change monitoring of the project, initiate verification with DOE, and conducts internal audit on correct implementation MP
- Project Manager is responsible for management and checking of CDM information and reporting
- Project Officer is responsible for project coordination, implementation and liaison, data gathering and retention, completion of the CDM spreadsheet, calculation of emission reductions, preparation of monitoring report

The organizational structure will be as follows:





SECTION D. Data and parameters

D.1. Data and parameters fixed ex ante or at renewal of crediting period

(Copy this table for each piece of data and parameter.)

Data / Parameter:	GWP_{CH_4}
Unit:	tCO ₂ /tCH ₄
Description:	Global warming potential of methane valid for the relevant commitment period
Source of data:	IPCC and change from GWP of 21 to 25 according to decision 4/CMP7 paragraph 66, EB69
Value(s) applied:	Default value for the commitment period = 25 tCO ₂ /tCH ₄
Purpose of data:	Project emission calculations
Additional comment:	-

Data / Parameter:	$EG_{historical}$
Unit:	MWh
Description:	Average historical electricity delivered by the existing facility to the grid
Source of data:	Project activity site
Value(s) applied:	912,476
Purpose of data:	Baseline emission calculations
Additional comment:	The average of historical electricity delivered by the existing facility (Wayang Windu Phase 1) to the grid, spanning all data from the most recent available month (February 2009) to the time at which the facility was operated (June 2000) expressed in MWh per year. Data is based on invoices from net electricity sales to the grid operator.

Data / Parameter:	$DATE_{BaselineRetrofit}$
Unit:	Date
Description:	Point in time when the existing equipment would need to be replaced in the absence of the project activity
Source of data:	Project activity site
Value(s) applied:	01/06/2030

Purpose of data:	Baseline emission calculations
Additional comment:	The technical lifetime of the existing facility, i.e. Wayang Windu Phase 1, in the absence of the project activity is taken to be 30 years. This is a conservative number, considering many of the power plants in Indonesia are operated even after its technical lifetime. Wayang Windu 1 started operation in June 2000, hence the DATE _{BaselineRetrofit} is 01/06/2030.

Data / Parameter:	$EF_{grid,CM,y}$
Unit:	tCO ₂ /MWh
Description:	Grid emission factor for JAMALI
Source of data:	Grid calculation published by Department of Energy and Mineral Resources of Indonesia - Directorate General of Electricity and Energy Utilization and endorsed by Indonesia DNA on 19/01/2009.
Value(s) applied:	0.891
Purpose of data:	Baseline emission calculations
Additional comment:	Calculated with "tool to calculate the emission factor for an electricity system version 01.1". Calculated once ex-ante at the start of the crediting period, using the most recent three historical years for which data is available at the time of submission of the CDM-PDD to the DOE for validation

D.2. Data and parameters monitored

(Copy this table for each piece of data and parameter.)

Data / Parameter:	$\omega_{\text{main, CO}_2}$		
Unit:	tCO ₂ /t steam		
Description:	Average mass fraction of CO ₂ in the produced steam		
Measured/ Calculated / Default:	Measured		
Source of data:	The mass fraction of CO ₂ in the produced steam at the production wells and at the steam field-power plant interface by the external laboratory.		
Value(s) of monitored parameter:	CO₂ (tCO₂ /t steam)	Wells	Main Steam
	08/12/2012	0.00705	0.01262
	13/03/2013	0.00679	0.00933
	13/06/2013	0.00710	0.00848
	13/09/2013	0.00745	0.01081
	11/12/2013	0.00719	0.00864
	14/03/2014	0.00724	0.00901
	16/06/2014	0.00773	0.00950
	09/09/2014	0.00685	0.01009

Monitoring equipment:	The CO ₂ monitoring equipment consists of gas flasks, filled with sodium hydroxide solution and additional chemicals to prevent oxidation. The gas sampling is carried out using ASTM Standard Practice E1675 for Sampling 2-Phase Geothermal Fluid for Purposes of Chemical Analysis (as applicable to sampling single phase steam only). The analysis is carried out by an external laboratory accredited under ISO 17025 by the National Accreditation Committee (KAN - Komite Akreditasi Nasional).
Measuring/ Reading/ Recording frequency:	Sampling, analysis, and recording are performed every 3 months.
Calculation method (if applicable):	N/A
QA/QC procedures:	Detailed procedures are described in the CDM Monitoring Manual
Purpose of data:	Project emission calculation
Additional comment:	-

Data / Parameter:	ω_{main} , CH ₄		
Unit:	tCH ₄ /t steam		
Description:	Average mass fraction of CH ₄ in the produced steam		
Measured/ Calculated / Default:	Measured		
Source of data:	The mass fraction of CH ₄ in the produced steam at the production wells and at the steam field-power plant interface by the external laboratory.		
Value(s) of monitored parameter:	CH ₄ (tCH ₄ /t steam)	Wells	Main Steam
	08/12/2012	2.71E-06	2.84E-06
	13/03/2013	1.82E-06	2.90E-06
	13/06/2013	3.44E-06	4.20E-06
	13/09/2013	2.60E-06	5.15E-06
	11/12/2013	2.94E-06	7.40E-06
	14/03/2014	4.29E-06	2.30E-06
	16/06/2014	3.63E-06	4.35E-06
	09/09/2014	8.33E-06	4.80E-06
Monitoring equipment:	The CH ₄ monitoring equipment consists of gas flasks, filled with sodium hydroxide solution and additional chemicals to prevent oxidation. The gas sampling is carried out using ASTM Standard Practice E1675 for Sampling 2-Phase Geothermal Fluid for Purposes of Chemical Analysis (as applicable to sampling single phase steam only). The analysis is carried out by an external laboratory accredited under ISO 17025 by the National Accreditation Committee (KAN - Komite Akreditasi Nasional).		
Measuring/ Reading/ Recording frequency:	Sampling, analysis, and recording are performed every 3 months.		
Calculation method (if applicable):	N/A		
QA/QC procedures:	Detailed procedures are described in the CDM Monitoring Manual		
Purpose of data:	Project emission calculation		
Additional comment:	-		

Data / Parameter:	$M_{s,y}$
Unit:	Tonnes
Description:	Quantity of steam produced during the year y
Measured/ Calculated / Default:	Measured
Source of data:	Continuous measurement by a Venturi flow meter ($M_{sv,y}$) located at the upstream of the Wayang Windu Unit 2 turbine and which is adjusted for losses of brine at the steam separator ($M_{sb,y}$) as well as Orifice Plates ($M_{so,i,y}$) located at the Wayang Windu Unit 2 well heads.
Value(s) of monitored parameter:	Refer to Annex 3 Daily Steam Data Wayang Windu Phase 2

Monitoring
equipment:

Steam flow to WW-2 turbine

Tag number	A2-FIT-0106
Serial number	91L410293
Accuracy class	0.04%
Calibration frequency	Biannually
Calibration	10/12/2012
Calibration	10/06/2013
Calibration	09/12/2013
Calibration	19/06/2014
Last calibration	05/12/2014
Validity	05/06/2015

MBB-1 Well steam flow

Tag number	FIT-2301	PIT-2302
Serial number	01830354	01830135
Accuracy class	0.065%	0.065%
Calibration frequency	Biannually	
Calibration	05/12/2012	05/12/2012
Calibration	05/06/2013	28/05/2013
Calibration	04/12/2013	28/11/2013
Calibration	11/06/2014	05/06/2014
Last calibration	05/12/2014	05/12/2014
Validity	05/06/2015	05/06/2015

MBA-1 Well steam flow

Tag number	FIT-2501	PIT-2502
Serial number	01830374	01830130
Accuracy class	0.065%	0.065%
Calibration frequency	Biannually	
Calibration	02/12/2012	02/12/2012
Calibration	31/05/2013	28/05/2013
Calibration	29/11/2013	27/11/2013
Calibration	05/06/2014	03/06/2014
Last calibration	03/12/2014	03/12/2014
Validity	03/06/2015	03/06/2015

MBA-2 Well steam flow

Tag number	FIT-2502	PIT-2504
Serial number	02065517	01830131
Accuracy class	0.065%	0.065%
Calibration frequency	Biannually	
Calibration	02/12/2012	02/12/2012
Calibration	03/06/2013	28/05/2013
Calibration	02/12/2013	27/11/2013
Calibration	09/06/2014	03/06/2014
Last calibration	02/12/2014	02/12/2014
Validity	02/06/2015	02/06/2015

MBA-3 Well steam flow

Tag number	FIT-2503	PIT-2506
Serial number	01830360	01830132
Accuracy class	0.065%	0.065%
Calibration frequency	Biannually	
Calibration	03/12/2012	01/12/2012
Calibration	03/06/2013	28/05/2013
Calibration	03/12/2013	27/11/2013
Calibration	09/06/2014	03/06/2014
Last calibration	01/12/2014	01/12/2014
Validity	01/06/2015	01/06/2015

MBA-4 Well steam flow

Tag number	FIT-2504	PIT-2508
Serial number	01830361	01830133
Accuracy class	0.065%	0.065%
Calibration frequency	Biannually	
Previous calibration	04/12/2012	01/12/2012
Calibration	04/06/2013	28/05/2013
Calibration	03/12/2013	28/11/2013
Calibration	04/06/2014	03/06/2014
Last calibration	30/11/2014	03/12/2014
Validity	30/05/2015	03/06/2015

MBA-5 Well steam flow

Tag number	FIT-2505	PIT-2510
Serial number	01830359	01830134
Accuracy class	0.065%	0.065%
Calibration frequency	Biannually	
Calibration	04/12/2012	01/12/2012
Calibration	04/06/2013	28/05/2013
Calibration	04/12/2013	28/11/2013
Calibration	04/06/2014	02/06/2014
Last calibration	29/11/2014	29/11/2014
Validity	29/05/2015	29/05/2015

MBD-5 Well steam flow

Tag number	FIT-501	PIT-506
Serial number	01845811	01593780
Accuracy class	0.065%	0.065%
Calibration frequency	Biannually	
Calibration	06/12/2012	06/12/2012
Calibration	05/06/2013	05/06/2013
Calibration	05/12/2013	05/12/2013
Calibration	10/06/2014	10/06/2014
Last calibration	04/12/2014	04/12/2014
Validity	04/06/2015	04/06/2015

WWW-1 Brine injection well

Tag number	FIT-984	PIT-918
Serial number	91M523067	8F196683
Accuracy class	0.08%	0.08%
Calibration frequency	Biannually	
Calibration	29/12/2012	09/12/2012
Calibration	07/06/2013	07/06/2013
Last calibration	07/06/2013	07/06/2013
Validity	07/12/2013	07/12/2013

The WWW-1 Brine injection well was replaced on WWF-3 on 3 October 2013 as per well engineer's recommendation. The instruments used at WWW-3 are as follows;

	WWF-3 Brine injection well		
	Tag number	FIT-980	PIT-799
	Serial number	8G199082	91M523084
	Accuracy class	0.08%	0.08%
	Calibration frequency	Biannually	
	Calibration	03/10/2013	03/10/2013
	Calibration	07/12/2013	07/12/2013
	Calibration	12/06/2014	16/06/2014
	Last calibration	4/12/2014	4/12/2014
	Validity	4/6/2015	4/6/2015
	Refer to Annex 4 Monitoring Equipments for further details.		
Measuring/ Reading/ Recording frequency:	Data is monitored continuously (polling of at least every second) and condensed to half hour values. Daily figures will be built according to the methodology by accumulation of data.		
Calculation method (if applicable):	<p>In order to be conservative, the primary data will be taken from the higher values from either the upstream metering points or the downstream metering. In case steam is transferred from unit 1 steam fields for power generation at unit 2 the upstream figure will higher. In case steam from the new steam fields at unit 2 will be transferred to the power generator of unit 1 the downfield figure will be higher. Using the higher one of the two values ensures that project emissions, which are attributable to the capacity addition by unit 2, are clearly identified and accounted. Thus, the quantity of steam ($M_{S,y}$) is given by:</p> $M_{S,y} = \max((M_{sv,y} + M_{sb,y}), \sum_i M_{so,y})$		

QA/QC procedures:	<p>Flow meters' instruments are calibrated using internal calibrator by SEG(WW)L EC&I Supervisor. The internal calibrator is calibrated every 2 years by accredited laboratory. In accordance to the SEG(WW)L internal procedure, calibration is to be conducted every 6 months</p> <p>Following the industry's practice, it is acceptable for the calibration to be conducted between 6 months to 1-year period from the last calibration date. The calibration procedure is described in the CDM monitoring manual and plant routine inspection procedure, the maximum permissible error is 0.1%.</p> <p>During this monitoring period, there were errors found during the calibration of FIT-2301, FIT-2501, PIT-2502, and FIT-980.</p> <table><tr><th>Tag Number</th><th>Calibration Date which error was found</th><th>Error Based on calibration record</th><th>Period where error calculation applied</th></tr><tr><td>FIT-2301</td><td>05/06/2013</td><td>0.1500%</td><td>01/01/2013 – 05/06/2013</td></tr><tr><td>FIT-2501</td><td>31/05/2013</td><td>0.2563%</td><td>01/01/2013 – 31/05/2013</td></tr><tr><td>PIT-2502</td><td>27/11/2013</td><td>0.1250%</td><td>28/05/2013 – 27/11/2013</td></tr><tr><td>FIT-980</td><td>07/12/2013</td><td>0.2803%</td><td>03/10/2013 – 07/12/2013</td></tr><tr><td>FIT-2301</td><td>05/12/2013</td><td>0.1837%</td><td>11/06/2014 - 05/12/2014</td></tr></table> <p>The error found was higher than maximum permissible error + 0.1%. The error based on calibration record was applied in the data for project emission calculation.</p> <p>During this monitoring period, there were delays on the calibration of below flow meters.</p> <table><tr><th>Tag Number</th><th>Calibration Expiry date</th><th>Actual Calibration date</th><th>Period where error calculation applied</th></tr><tr><td>A2-FIT-0106</td><td>09/06/2014</td><td>19/06/2014</td><td>09/06/2014 – 19/06/2014</td></tr><tr><td>FIT-2301</td><td>04/06/2014</td><td>11/06/2014</td><td>04/06/2014 – 11/06/2014</td></tr><tr><td>PIT-2302</td><td>28/05/2014</td><td>05/06/2014</td><td>28/05/2014 – 05/06/2014</td></tr><tr><td>FIT-2501</td><td>29/05/2014</td><td>05/06/2014</td><td>29/05/2014 – 05/06/2014</td></tr><tr><td>PIT-2502</td><td>27/05/2014</td><td>03/06/2014</td><td>27/05/2014 – 03/06/2014</td></tr><tr><td>FIT-2502</td><td>02/06/2014</td><td>09/06/2014</td><td>02/06/2014 – 09/06/2014</td></tr><tr><td>PIT-2504</td><td>27/05/2014</td><td>03/06/2014</td><td>27/05/2014 – 03/06/2014</td></tr><tr><td>FIT-2503</td><td>03/06/2014</td><td>09/06/2014</td><td>03/06/2014 – 09/06/2014</td></tr><tr><td>PIT-2506</td><td>27/05/2014</td><td>03/06/2014</td><td>27/05/2014 – 03/06/2014</td></tr><tr><td>FIT-2504</td><td>03/04/2014</td><td>04/06/2014</td><td>03/06/2014 – 04/06/2014</td></tr><tr><td>PIT-2508</td><td>28/05/2014</td><td>03/06/2014</td><td>28/05/2014 – 03/06/2014</td></tr><tr><td>PIT-2510</td><td>28/05/2014</td><td>02/06/2014</td><td>28/05/2014 – 02/06/2014</td></tr><tr><td>FIT501</td><td>05/06/2014</td><td>10/06/2014</td><td>05/06/2014 – 10/06/2014</td></tr><tr><td>PIT506</td><td>05/06/2014</td><td>10/06/2014</td><td>05/06/2014 – 10/06/2014</td></tr><tr><td>FIT-980</td><td>07/06/2014</td><td>12/06/2014</td><td>07/06/2014 – 12/06/2014</td></tr><tr><td>PIT-799</td><td>07/06/2014</td><td>16/06/2014</td><td>07/06/2014 – 12/06/2014</td></tr></table> <p>No error identified in the delayed calibration test. Based on the operational requirement from Wayang Windu, the error correction applied is the maximum permissible error for the flow meters' instruments which is 0.1%.</p> <p>The internal calibrators are calibrated every 2 years by accredited laboratory. Detailed procedures are described in the CDM Monitoring Manual.</p>	Tag Number	Calibration Date which error was found	Error Based on calibration record	Period where error calculation applied	FIT-2301	05/06/2013	0.1500%	01/01/2013 – 05/06/2013	FIT-2501	31/05/2013	0.2563%	01/01/2013 – 31/05/2013	PIT-2502	27/11/2013	0.1250%	28/05/2013 – 27/11/2013	FIT-980	07/12/2013	0.2803%	03/10/2013 – 07/12/2013	FIT-2301	05/12/2013	0.1837%	11/06/2014 - 05/12/2014	Tag Number	Calibration Expiry date	Actual Calibration date	Period where error calculation applied	A2-FIT-0106	09/06/2014	19/06/2014	09/06/2014 – 19/06/2014	FIT-2301	04/06/2014	11/06/2014	04/06/2014 – 11/06/2014	PIT-2302	28/05/2014	05/06/2014	28/05/2014 – 05/06/2014	FIT-2501	29/05/2014	05/06/2014	29/05/2014 – 05/06/2014	PIT-2502	27/05/2014	03/06/2014	27/05/2014 – 03/06/2014	FIT-2502	02/06/2014	09/06/2014	02/06/2014 – 09/06/2014	PIT-2504	27/05/2014	03/06/2014	27/05/2014 – 03/06/2014	FIT-2503	03/06/2014	09/06/2014	03/06/2014 – 09/06/2014	PIT-2506	27/05/2014	03/06/2014	27/05/2014 – 03/06/2014	FIT-2504	03/04/2014	04/06/2014	03/06/2014 – 04/06/2014	PIT-2508	28/05/2014	03/06/2014	28/05/2014 – 03/06/2014	PIT-2510	28/05/2014	02/06/2014	28/05/2014 – 02/06/2014	FIT501	05/06/2014	10/06/2014	05/06/2014 – 10/06/2014	PIT506	05/06/2014	10/06/2014	05/06/2014 – 10/06/2014	FIT-980	07/06/2014	12/06/2014	07/06/2014 – 12/06/2014	PIT-799	07/06/2014	16/06/2014	07/06/2014 – 12/06/2014
Tag Number	Calibration Date which error was found	Error Based on calibration record	Period where error calculation applied																																																																																										
FIT-2301	05/06/2013	0.1500%	01/01/2013 – 05/06/2013																																																																																										
FIT-2501	31/05/2013	0.2563%	01/01/2013 – 31/05/2013																																																																																										
PIT-2502	27/11/2013	0.1250%	28/05/2013 – 27/11/2013																																																																																										
FIT-980	07/12/2013	0.2803%	03/10/2013 – 07/12/2013																																																																																										
FIT-2301	05/12/2013	0.1837%	11/06/2014 - 05/12/2014																																																																																										
Tag Number	Calibration Expiry date	Actual Calibration date	Period where error calculation applied																																																																																										
A2-FIT-0106	09/06/2014	19/06/2014	09/06/2014 – 19/06/2014																																																																																										
FIT-2301	04/06/2014	11/06/2014	04/06/2014 – 11/06/2014																																																																																										
PIT-2302	28/05/2014	05/06/2014	28/05/2014 – 05/06/2014																																																																																										
FIT-2501	29/05/2014	05/06/2014	29/05/2014 – 05/06/2014																																																																																										
PIT-2502	27/05/2014	03/06/2014	27/05/2014 – 03/06/2014																																																																																										
FIT-2502	02/06/2014	09/06/2014	02/06/2014 – 09/06/2014																																																																																										
PIT-2504	27/05/2014	03/06/2014	27/05/2014 – 03/06/2014																																																																																										
FIT-2503	03/06/2014	09/06/2014	03/06/2014 – 09/06/2014																																																																																										
PIT-2506	27/05/2014	03/06/2014	27/05/2014 – 03/06/2014																																																																																										
FIT-2504	03/04/2014	04/06/2014	03/06/2014 – 04/06/2014																																																																																										
PIT-2508	28/05/2014	03/06/2014	28/05/2014 – 03/06/2014																																																																																										
PIT-2510	28/05/2014	02/06/2014	28/05/2014 – 02/06/2014																																																																																										
FIT501	05/06/2014	10/06/2014	05/06/2014 – 10/06/2014																																																																																										
PIT506	05/06/2014	10/06/2014	05/06/2014 – 10/06/2014																																																																																										
FIT-980	07/06/2014	12/06/2014	07/06/2014 – 12/06/2014																																																																																										
PIT-799	07/06/2014	16/06/2014	07/06/2014 – 12/06/2014																																																																																										
Purpose of data:	Project emission calculation																																																																																												
Additional comment:	Details information about the calibration of the calibrators has been provided to the DOE.																																																																																												

Data / Parameter:	EG_y																																																				
Unit:	MWh																																																				
Description:	Electricity supplied by the project activity to the grid (total of net electricity generated by Wayang Windu Unit 1 and Unit 2)																																																				
Measured/ Calculated / Default:	Measured																																																				
Source of data:	The reading of the electricity from the transaction meters from Wayang Windu Unit 1 and Unit 2. Primary data is sourced from the check kWh meters downloaded daily from the DCS.																																																				
Value(s) of monitored parameter:	Refer to Annex 5 Daily Data Wayang Windu Unit 1 and Unit 2																																																				
Monitoring equipment:	<p>Wayang Windu 1 main kWh meter which is owned by PLN</p> <table border="1"> <tr><td>Serial number</td><td>MT-0809A063-01</td></tr> <tr><td>Accuracy class</td><td>0.2%</td></tr> <tr><td>Calibration frequency</td><td>Every 5 years</td></tr> <tr><td>Previous Calibration</td><td>10/10/2008</td></tr> <tr><td>Last calibration</td><td>10/10/2013</td></tr> <tr><td>Validity</td><td>10/10/2018</td></tr> </table> <p>Wayang Windu 1 check kWh meter which is owned by SEG(WW)L (primary data):</p> <table border="1"> <tr><td>Serial number</td><td>PT-0807A249-01</td></tr> <tr><td>Accuracy class</td><td>0.2%</td></tr> <tr><td>Calibration frequency</td><td>Every 2 years</td></tr> <tr><td>Calibration</td><td>06/01/2011</td></tr> <tr><td>Calibration</td><td>17/12/2012</td></tr> <tr><td>Last calibration</td><td>2/12/2014</td></tr> <tr><td>Validity</td><td>2/12/2016</td></tr> </table> <p>Wayang Windu 2 main kWh meter which is owned by PLN:</p> <table border="1"> <tr><td>Serial number</td><td>MT-0806A388 - 01</td></tr> <tr><td>Accuracy class</td><td>0.2%</td></tr> <tr><td>Calibration frequency</td><td>Every 5 years</td></tr> <tr><td>Previous calibration</td><td>10/10/2008</td></tr> <tr><td>Last calibration</td><td>10/10/2013</td></tr> <tr><td>Validity</td><td>10/10/2018</td></tr> </table> <p>Wayang Windu 2 check kWh meter which is owned by SEG(WW)L (primary data):</p> <table border="1"> <tr><td>Serial number</td><td>PT-0802A194-01</td></tr> <tr><td>Accuracy class</td><td>0.2%</td></tr> <tr><td>Calibration frequency</td><td>Every 2 years</td></tr> <tr><td>Previous calibration</td><td>06/01/2011</td></tr> <tr><td>Calibration</td><td>17/12/2012</td></tr> <tr><td>Last calibration</td><td>2/12/2014</td></tr> <tr><td>Validity</td><td>2/12/2016</td></tr> </table> <p>Refer to Annex 4 Monitoring Equipments for further details</p>	Serial number	MT-0809A063-01	Accuracy class	0.2%	Calibration frequency	Every 5 years	Previous Calibration	10/10/2008	Last calibration	10/10/2013	Validity	10/10/2018	Serial number	PT-0807A249-01	Accuracy class	0.2%	Calibration frequency	Every 2 years	Calibration	06/01/2011	Calibration	17/12/2012	Last calibration	2/12/2014	Validity	2/12/2016	Serial number	MT-0806A388 - 01	Accuracy class	0.2%	Calibration frequency	Every 5 years	Previous calibration	10/10/2008	Last calibration	10/10/2013	Validity	10/10/2018	Serial number	PT-0802A194-01	Accuracy class	0.2%	Calibration frequency	Every 2 years	Previous calibration	06/01/2011	Calibration	17/12/2012	Last calibration	2/12/2014	Validity	2/12/2016
Serial number	MT-0809A063-01																																																				
Accuracy class	0.2%																																																				
Calibration frequency	Every 5 years																																																				
Previous Calibration	10/10/2008																																																				
Last calibration	10/10/2013																																																				
Validity	10/10/2018																																																				
Serial number	PT-0807A249-01																																																				
Accuracy class	0.2%																																																				
Calibration frequency	Every 2 years																																																				
Calibration	06/01/2011																																																				
Calibration	17/12/2012																																																				
Last calibration	2/12/2014																																																				
Validity	2/12/2016																																																				
Serial number	MT-0806A388 - 01																																																				
Accuracy class	0.2%																																																				
Calibration frequency	Every 5 years																																																				
Previous calibration	10/10/2008																																																				
Last calibration	10/10/2013																																																				
Validity	10/10/2018																																																				
Serial number	PT-0802A194-01																																																				
Accuracy class	0.2%																																																				
Calibration frequency	Every 2 years																																																				
Previous calibration	06/01/2011																																																				
Calibration	17/12/2012																																																				
Last calibration	2/12/2014																																																				
Validity	2/12/2016																																																				
Measuring/ Reading/ Recording frequency:	The meter reading is recorded every half hourly and recorded automatically at load profile at the transaction kWh meters.																																																				

Calculation method (if applicable):	N/A
QA/QC procedures:	Based on the Standard Operating Procedure of Metering System of PT PLN (Persero) P3B – Jawa Bali revision A, the data from the main meter and the check meter are compared on the monthly basis and any differences greater than 0.4% (the maximum difference of the main meter of 0.2 class and check meter of 0.2 class) will be investigated further. During this monitoring period, the difference between the data from main meter and check meter has never achieved a difference exceeding 0.4% and therefore is considered acceptable. Primary data (data applied to the CERs calculation) is sourced from the check meter. Refer to Annex 6 Main Meter and Check Meter Measurement. The data is double-checked with the records of the electricity transaction. Detailed procedures are described in the CDM Monitoring Manual.
Purpose of data:	Baseline emission calculation
Additional comment:	-

Data / Parameter:	PE_{FC,i,y}
Unit:	tCO ₂ /yr
Description:	CO ₂ emissions from fossil fuel combustion in the operation of the power plant (diesel genset and fire pump)
Measured/ Calculated / Default:	Calculated
Source of data:	Calculated according to the procedure outlined in the 'Tool to calculate project or leakage CO ₂ emissions from fossil fuel combustion'
Value(s) of monitored parameter:	23.18
Monitoring equipment:	N/A
Measuring/ Reading/ Recording frequency:	Calculated on the monthly basis
Calculation method (if applicable):	N/A
QA/QC procedures:	Detailed procedures are described in the CDM Monitoring Manual
Purpose of data:	Project emission calculation
Additional comment:	-

Data / Parameter:	FC_{i,i,y}
Unit:	Ton/yr
Description:	Quantity of diesel fuel combusted in power plant operation during the year y
Measured/ Calculated / Default:	Measured
Source of data:	Measurement of diesel fuel consumption for emergency genset and fire pump multiplied with the national data of the diesel fuel density. Readings from the flowmeter at the inlet of the daily tank for emergency genset and readings from the flowmeter at the inlet diesel tank for the fire pump are recorded during the first week of the month.
Value(s) of monitored parameter:	7.25

Monitoring equipment:	Flowmeter at the inlet of the daily tank for the diesel fuel consumption for emergency gen-set	
	Tag number	AO-FQ-2033
	Serial Number	Y0194
	Accuracy class	2%
	Calibration frequency	Annually
	Previous calibration	31/01/2011
	Last calibration	25/01/2012
	Validity	25/01/2013
	Replaced by:	
	Tag number	AO-FQ-2033
	Serial Number	LL60223
	Accuracy class	0.5%
	Calibration frequency	Annually
	Calibration	12/09/2013
	Last calibration	10/09/2014
	Validity	10/09/2015
	Flowmeter at the inlet diesel tank for the fire pump	
	Tag Number	AO-FQ-2032
	Serial Number	4905C
	Accuracy class	1%
	Calibration frequency	Annually
	Previous calibration	31/01/2011
	Last calibration	25/01/2012
	Validity	25/01/2013
	Replaced by:	
	Tag Number	AO-FQ-2032
	Serial Number	LL60217
	Accuracy class	0.5%
	Calibration frequency	Annually
	Calibration	12/09/2013
	Last calibration	10/09/2014
	Validity	10/09/2015
	During this monitoring period, flowmeters AO-FQ-2032 and AO-FQ-2033 were broken and the replacements were only available after September 2013. From January 2013 to September 2013, the diesel fuel consumption emergency gen-set and fire pump was taken from the quantity of diesel oil purchased.	
Measuring/ Reading/ Recording frequency:	The data is collected monthly	
Calculation method (if applicable):	N/A	
QA/QC procedures:	The consistency of measured diesel fuel consumption quantities was cross-checked by an annual energy balance that was based on engine specification fuel consumption (emergency genset and fire pump) and the working hour	
Purpose of data:	Project emission calculation	
Additional comment:	-	

Data / Parameter:	NCV_{i,y}
Unit:	GJ/ton
Description:	Weighted average net calorific value of diesel fuel in year y
Measured/ Calculated / Default:	Default
Source of data:	National value (Pertamina handbook – Bahan Bakar Minyak Elpiji dan BBG)
Value(s) of monitored parameter:	42.73
Monitoring equipment:	N/A
Measuring/ Reading/ Recording frequency:	The value is recorded annually
Calculation method (if applicable):	N/A
QA/QC procedures:	Detailed procedures are described in the CDM Monitoring Manual
Purpose of data:	Project emission calculation
Additional comment:	-

Data / Parameter:	EF_{CO₂,i,y}
Unit:	tCO ₂ /GJ
Description:	Weighted average CO ₂ emission factor of diesel fuel in year y
Measured/ Calculated / Default:	Default
Source of data:	IPCC default values at the upper limit of the uncertainty at 95% confidence interval as provided in Table 1.2 of Chapter 1 Vol.2 (Energy) of the 2006 IPCC Guidelines on National GHG Inventories
Value(s) of monitored parameter:	0.00748
Monitoring equipment:	N/A
Measuring/ Reading/ Recording frequency:	The value is recorded annually
Calculation method (if applicable):	N/A
QA/QC procedures:	Detailed procedures are described in the CDM Monitoring Manual
Purpose of data:	Project emission calculation
Additional comment:	-

TEGy (Total electricity produced by the project activity, including the electricity supplied to the grid and the electricity supplied to internal loads, in year y) is not monitored for the project activity. Based on ACM0002 ver 9, TEGy is only applicable to be monitored for hydro power plants and is not a requirement for geothermal power plants.

D.3. Implementation of sampling plan

>>

Not applicable for this project activity

SECTION E. Calculation of emission reductions or GHG removals by sinks

E.1. Calculation of baseline emissions or baseline net GHG removals by sinks

>>

The formula used for determination of the baseline emissions are described in section B.6.1 of the Project Design Document v3 dated 2 December 2010, and available upon the UNFCCC website (<http://cdm.unfccc.int/Projects/DB/TUEV-SUED1260194062.48/view>).

Baseline emissions are calculated as follows:

$$BE_y = (EG_y - EG_{baseline}) \cdot EF_{grid,CM,y}$$

Where:

BE_y = Baseline emission in year y (tCO₂/yr)

EG_y = Electricity supplied by the project activity to the grid (MWh)

$EG_{baseline}$ = Baseline electricity supplied to the grid in the case of modified or retrofit facilities (MWh). For new power plants this value is taken as zero

$EF_{grid,CM,y}$ = Combined margin CO₂ emission factor for grid connected power generation in year y (calculated by using "tool to calculate the emission factor for an electricity system version 01.1")

The project activity is the installation of additional power units at an existing grid-connected renewable power plant:

$$EG_{baseline} = \text{MAX} (EG_{historical}, EG_{existing,y}), \text{ until } DATE_{BaselineRetrofit}$$

$$EG_{baseline} = EG_y, \text{ on/after } DATE_{BaselineRetrofit}$$

Where:

$EG_{baseline}$ = Baseline electricity supplied to the grid in the case of modified or retrofit facilities (MWh)

$EG_{historical}$ = Average of historical electricity delivered by the existing facility to the grid (MWh)

$EG_{existing,y}$ = Electricity supplied by the existing grid-connected power plant (MWh)

$DATE_{BaselineRetrofit}$ = Point in time when the existing equipment would need to be replaced in the absence of the project activity (date)

Calculation of $EG_{historical}$

$EG_{historical}$ was calculated based on the historical electricity delivered by Wayang Windu Phase 1 from the start of its operation in June 2000 up to February 2009, i.e. 912,476 MWh/year

Calculation of $DATE_{BaselineRetrofit}$

The technical lifetime of the existing facility, i.e. Wayang Windu Phase 1, in the absence of the project activity is taken to be 30 years. This is a conservative number, considering many of the power plants in Indonesia are operated even after its technical lifetime.

Wayang Windu 1 started operation in June 2000, hence the $DATE_{BaselineRetrofit}$ is 01/06/2030.

$EF_{grid,CM,y}$

The value applied is 0.891 tCO₂/yr based on ex-ante calculation in the registered PDD.

Monitored Baseline Emission Calculation

EG^1	Electricity supplied by the project activity to the grid	3,725,864.57	MWh
$EG_{existing}^2$	Monitored	1,845,533.37	MWh
Duration Monitoring Period	01/01/2013 – 31/12/2014	730	Days
$EG_{historical,y}$	Yearly average of historical electricity delivered by the existing facility to the grid	912,476	MWh
$EG_{historical,MP}$	730/365*912,476	1,824,952.00	MWh
$EG_{baseline}$	MAX ($EG_{historical,MP}$, $EG_{existing,MP}$)	1,845,533.37	MWh
$EG - EG_{baseline}$		1,880,331.20	MWh
BE	$(EG - EG_{baseline}) \cdot EF_{grid,CM,y}$	1,674,434.00	t CO₂e

E.2. Calculation of project emissions or actual net GHG removals by sinks

>>

The formula used for determination of the project emissions are described in section B.6.1 of the Project Design Document v3 dated 02/12/2010, and available upon the UNFCCC website (<http://cdm.unfccc.int/Projects/DB/TUEV-SUED1260194062.48/view>).

Project emissions are calculated as follows:

$$PE_y = PES_y + PEFF_y$$

Where:

PE_y = Project emission in year y (tCO₂/yr)

PES_y = Project emission of CH₄ and CO₂ due to the release of non-condensable gases from the stream produced in geothermal power plant in year y (tCO₂/yr)

$PEFF_y$ = Project emission from combustion of fossil fuels related to the operation of the geothermal power plant in year y (tCO₂/yr)

Project emission of CO₂ and CH₄ due to the release of non-condensable gases from the steam produced in the geothermal power plant is calculated as:

$$PES_y = (\omega_{main,CO_2} + \omega_{main,CH_4} \cdot GWP_{CH_4}) \cdot M_{S,y}$$

Where:

¹ Refer to Annex 5 for daily generation data from Wayang Windu Phase 1 and Wayang Windu Phase 2 geothermal power project

² Refer to Annex 5 for daily generation data from Wayang Windu Phase 1 geothermal power project

PES_y = Project emission of CH_4 and CO_2 due to the release of non-condensable gases from the stream produced in geothermal power plant in year y (tCO_2/yr)
 ω_{main,CO_2} = Average mass fraction of CO_2 in the produced steam (non-dimensional)
 ω_{main,CH_4} = Average mass fraction of CH_4 in the produced steam (non-dimensional)
 GWP_{CH_4} = Global warming potential of CH_4 valid for the relevant commitment period (tCO_2/tCH_4)
 $M_{S,y}$ = Quantity of steam produced during the year y (tonnes)

Project emissions from combustion of fossil fuel related to the operation of geothermal power plant is calculated as:

$$PEFF_y = PE_{FC,j,y}$$

Where:

$PEFF_y$ = Project emission from combustion of fossil fuels related to the operation of the geothermal power plant in year y (tCO_2/yr)
 $PE_{FC,j,y}$ = CO_2 emissions from fossil fuel combustion in process j during the year y (tCO_2/yr). This parameter will be calculated by the “tool to calculate project or leakage CO_2 emissions from fossil fuel combustion version 02”

$$PE_{FC,j,y} = \sum FC_{diesel,j,y} \cdot COEF_{i,y}$$

Where:

$FC_{diesel,j,y}$ = Quantity of diesel combusted in emergency genset and fire pump multiplied with the national data of the diesel fuel density (ton)
 $COEF_{i,y}$ = CO_2 emission coefficient of diesel fuel (tCO_2/ton)

$COEF_{i,y}$ is calculated based on net calorific value and CO_2 emission factor of diesel fuel, as follows:

$$COEF_{i,y} = NCV_{diesel,y} \cdot EF_{CO_2,diesel,y}$$

Where:

$NCV_{diesel,y}$ = Weighted average net calorific value of diesel fuel in year y (Values provided by the fuel supplier, or regional or national average default values, or IPCC default values at the upper limit of the uncertainty at a 95% confidence interval as provided in Table 1.2 of Chapter 1 of Vol.2 (Energy) of the 2006 IPCC Guidelines on National GHG Inventories) (GJ/ton)
 $EF_{CO_2,diesel,y}$ = Weighted average CO_2 emission factor of diesel fuel in year y (Values provided by the fuel supplier, or regional or national average default values, or IPCC default values at the upper limit of the uncertainty at a 95% confidence interval as provided in Table 1.2 of Chapter 1 of Vol.2 (Energy) of the 2006 IPCC Guidelines on National GHG Inventories) (tCO_2/GJ)

Monitored Project Emission

Month	Diesel Consumption [litres]
01/01/2013 - 31/01/2013	0
01/02/2013 - 28/02/2013	0
01/03/2013 - 31/03/2013	1000
01/04/2013 - 30/04/2013	0
01/05/2013 - 31/05/2013	0
01/06/2013 - 30/06/2013	930
01/07/2013 - 31/07/2013	0
01/08/2013 - 31/08/2013	0
01/09/2013 - 30/09/2013	1400

01/10/2013 - 31/10/2013	360
01/11/2013 - 30/11/2013	354
01/12/2013 - 31/12/2013	374
01/01/2014 - 31/01/2014	354
01/02/2014 - 28/02/2014	422
01/03/2014 - 31/03/2014	330
01/04/2014 - 30/04/2014	416
01/05/2014 - 31/05/2014	305
01/06/2014 - 30/06/2014	379
01/07/2014 - 31/07/2014	359
01/08/2014 - 30/08/2014	332
01/09/2014 - 30/09/2014	0
01/10/2014 - 31/10/2014	323
01/11/2014 - 30/11/2014	340
01/12/2014 - 31/12/2014	357

$\sum FC_{\text{diesel}}$	$\sum FC_{\text{diesel},i} \cdot \rho_{\text{diesel},i}^3$	7.25	t
$PEFF$	$\sum FC_{\text{diesel},i,y} \cdot NCV_{\text{diesel},y} \cdot EF_{\text{CO}_2,\text{diesel},y}^4$	23.18	t CO ₂ e
PES_y	$(\omega_{\text{main},\text{CO}_2} + \omega_{\text{main},\text{CH}_4} \cdot GWP_{\text{CH}_4}) \cdot M_{S,y}^5$	171381.09	t CO ₂ e
PE	$PES_y + PEFF_y$	171405	t CO₂e

E.3. Calculation of leakage

>>

Since ACM0002 version 9 does not consider the emission due to power plant construction and fuel handlings, no leakage is considered ($L_y = 0$).

³Diesel density, Source: national value of 0.87 kg/Litre (Pertamina handbook – Bahan Bakar Minyak Elpiji dan BBG). Fossil fuel consumption is recorded on the monthly basis.

⁴ Diesel net calorific value, Source: Source: Bahan Bakar Minyak ELPIJI dan BBG of 42.73 GJ/ton. Diesel effective CO₂ emission factor, Source: IPCC default values at the upper limit of the uncertainty at a 95% confidence interval as provided in Table 1.2 of Chapter 1 of Vol.2 (Energy) of the 2006 IPCC Guidelines on National GHG Inventories of 0.0748 tCO₂/GJ

⁵ Refer to Annex 5 for daily steam data from Wayang Windu Phase 2 geothermal power project. PES is recorded on the daily basis

E.4. Summary of calculation of emission reductions or net anthropogenic GHG removals by sinks

Item	Baseline emissions or baseline net GHG removals by sinks (t CO ₂ e)	Project emissions or actual net GHG removals by sinks (t CO ₂ e)	Leakage (t CO ₂ e)	Emission reductions or net anthropogenic GHG removals by sinks (t CO ₂ e)
Total	1,674,434	171,405	0	1,503,029

E.5. Comparison of actual emission reductions or net anthropogenic GHG removals by sinks with estimates in registered PDD

Item	Values estimated in ex-ante calculation of registered PDD	Actual values achieved during this monitoring period
Emission reductions or GHG removals by sinks (t CO ₂ e)	1,589,664	1,503,029

E.6. Remarks on difference from estimated value in registered PDD

>>

The maximum emission reduction generated by this project activity within the proposed Monitoring period is **1,589,664** tones of CO₂e and the actual emission reduction is **1,503,029** tones of CO₂e. The actual CER generation is 5.45% lower than the values applied in ex-ante estimation of the registered PDD.

E.7. Actual emission reductions or net anthropogenic GHG removals by sinks during the first commitment period and the period from 1 January 2013 onwards

Item	Actual values achieved up to 31 December 2012	Actual values achieved from 1 January 2013 onwards
Emission reductions or GHG removals by sinks (t CO ₂ e)	Not applicable	1,503,029

- - - - -

Appendix 1. Contact information of project participants and responsible persons/ entities

Project participant and/or responsible person/ entity	<input checked="" type="checkbox"/> Project participant <input checked="" type="checkbox"/> Responsible person/ entity for completing the CDM-MR-FORM
Organization name	Sindicatum Carbon Capital Ltd
Street/P.O. Box	80 Anson Road
Building	#28-02 Fuji Xerox Towers
City	
State/Region	
Postcode	
Country	Singapore
Telephone	+65 6578 9285
Fax	+65 6732 9767
E-mail	jay.mariyappan@sindicatum.com
Website	
Contact person	
Title	Managing Director
Salutation	Mr
Last name	Mariyappan
Middle name	
First name	Jay
Department	
Mobile	+65 97110002
Direct fax	
Direct tel.	
Personal e-mail	

Annex 1
Downtime and Shutdown Records

Planned Outage (PO)	The removal of a unit from service to perform work on specific components that is scheduled well in advance and has a predetermined start date and duration (e.g., annual overhaul, inspections, testing).
Maintenance Outage (MO)	The removal of a unit from service to perform work on specific components that can be deferred beyond the end of the next weekend, but requires the unit be removed from service before the next planned outage. Typically, MOs may occur any time during the year, have flexible start dates, and may or may not have predetermined durations.
Forced Outage (FO)	An unplanned component failure (immediate, delayed, postponed, start-up failure) or other condition that requires the unit be removed from service immediately, within six hours, or before the end of the next weekend.

WW Unit# 2 Un-Availability State									
NO	DESYNCRONIZED		SYNCRONIZED		TOTAL HOURS	TOTAL GENERATION LOST (MWh)	State	UN-AVAILABILITY CAUSED	DOCUMENT REFERENCE
	DATE	TIME	DATE	TIME					
1	09 Apr 2014	16:51	10 Apr 2014	11:11	18:20	2,088.2	Forced Outage (FO)	Turbine Trip due to Loss of Excitation	Refer to: IR 0053 Unit-2 Trip
2	10 Apr 2014	13:46	10 Apr 2014	16:56	3:10	360.7	Forced Outage (FO)	Turbine Trip due to Loss of Excitation	Refer to: IR 0053 Unit-2 Trip
3	11 Apr 2014	13:16	11 Apr 2014	17:31	4:15	484.1	Forced Outage (FO)	Turbine Trip due to Loss of Excitation	Refer to: IR 0053 Unit-2 Trip

25.8

WW Unit#1 Un-Availability State									
NO	DESYNCRONIZED		SYNCRONIZED		TOTAL HOURS	TOTAL GENERATION LOST (MWh)	State	UN-AVAILABILITY CAUSED	DOCUMENT REFERENCE
	DATE	TIME	DATE	TIME					
1	14-Nov-13	1:38	14-Nov-13	15:12	13:34	1,522.1	Forced Outage (FO)	Turbine Trip due to steam high NCG content, condenser vacuum drop to -521 mbar	W-O-GDI-GN-12878

13.5

Annex 2

List of Relevant Operation and Maintenance Procedures

FIT Routine & Venture Inspection Procedures
 Routine Operation Procedures
 Metering System Operation, Maintenance and Calibration
 QA/QC Laboratory Analysis & Utilities Procedures
 Gas Sampling Procedures

Annex 3

Daily steam production data from Wayang Windu Phase 2 geothermal power project (M_s), Daily steam generation data measured by Venturi flowmeter ($M_{sv,y}$), Daily losses of brine at the steam separator ($M_{sb,y}$), Daily steam generation data measured by Orifice plates ($M_{so,y}$) during Monitoring Period

Date	$M_{so,i,y}$ Wells	$M_{sb,y}$ Brine	$M_{sv,y}$ Main steam	$M_{sb,y} + M_{sv,y}$ Brine+Main Steam	$M_{s,conservative}$ Wells/Brine+Main Steam	M_s Tons
1-Jan-13	20,167.18	2,465.31	18,850.00	21,315.31	Brine+Main Steam	21,315.31
2-Jan-13	20,194.60	2,456.09	18,840.00	21,296.09	Brine+Main Steam	21,296.09
3-Jan-13	20,055.88	2,405.30	18,850.00	21,255.30	Brine+Main Steam	21,255.30
4-Jan-13	20,164.60	2,634.91	18,850.00	21,484.91	Brine+Main Steam	21,484.91
5-Jan-13	20,034.59	2,369.30	18,840.00	21,209.30	Brine+Main Steam	21,209.30
6-Jan-13	19,927.67	2,671.00	18,850.00	21,521.00	Brine+Main Steam	21,521.00
7-Jan-13	19,867.59	2,411.00	18,840.00	21,251.00	Brine+Main Steam	21,251.00
8-Jan-13	19,742.38	2,626.70	18,850.00	21,476.70	Brine+Main Steam	21,476.70
9-Jan-13	20,109.00	2,607.80	18,840.00	21,447.80	Brine+Main Steam	21,447.80
10-Jan-13	20,377.05	2,500.30	18,850.00	21,350.30	Brine+Main Steam	21,350.30
11-Jan-13	20,386.12	2,333.11	18,850.00	21,183.11	Brine+Main Steam	21,183.11
12-Jan-13	20,386.37	2,550.39	18,840.00	21,390.39	Brine+Main Steam	21,390.39
13-Jan-13	20,382.05	2,440.11	18,850.00	21,290.11	Brine+Main Steam	21,290.11
14-Jan-13	20,353.32	2,338.00	18,840.00	21,178.00	Brine+Main Steam	21,178.00
15-Jan-13	20,377.95	2,564.89	18,850.00	21,414.89	Brine+Main Steam	21,414.89
16-Jan-13	20,325.74	2,409.20	18,850.00	21,259.20	Brine+Main Steam	21,259.20
17-Jan-13	20,167.64	2,363.19	18,840.00	21,203.19	Brine+Main Steam	21,203.19
18-Jan-13	20,053.74	2,477.41	18,850.00	21,327.41	Brine+Main Steam	21,327.41
19-Jan-13	20,178.95	2,451.72	18,840.00	21,291.72	Brine+Main Steam	21,291.72
20-Jan-13	20,101.62	2,259.88	18,850.00	21,109.88	Brine+Main Steam	21,109.88
21-Jan-13	19,987.32	2,466.41	18,850.00	21,316.41	Brine+Main Steam	21,316.41
22-Jan-13	20,019.43	2,420.09	18,840.00	21,260.09	Brine+Main Steam	21,260.09
23-Jan-13	20,133.20	2,635.63	18,840.00	21,475.63	Brine+Main Steam	21,475.63
24-Jan-13	20,138.30	2,412.09	18,840.00	21,252.09	Brine+Main Steam	21,252.09
25-Jan-13	20,373.19	2,374.78	18,850.00	21,224.78	Brine+Main Steam	21,224.78
26-Jan-13	20,366.73	2,421.91	18,840.00	21,261.91	Brine+Main Steam	21,261.91
27-Jan-13	20,382.38	2,502.81	18,850.00	21,352.81	Brine+Main Steam	21,352.81
28-Jan-13	20,260.30	2,391.50	18,840.00	21,231.50	Brine+Main Steam	21,231.50
29-Jan-13	20,275.75	2,611.50	18,840.00	21,451.50	Brine+Main Steam	21,451.50
30-Jan-13	19,989.56	1,660.00	18,840.00	20,500.00	Brine+Main Steam	20,500.00
31-Jan-13	20,335.61	1,630.00	18,850.00	20,480.00	Brine+Main Steam	20,480.00
1-Feb-13	20,330.98	3,682.19	18,850.00	22,532.19	Brine+Main Steam	22,532.19

Date	M _{so,i,y}	M _{sb,y}	M _{sv,y}	M _{sb,y} + M _{sv,y}	M _{s,conservative}	M _s
	Wells	Brine	Main steam	Brine+Main Steam	Wells/Brine+Main Steam	Tons
2-Feb-13	20,342.55	2,491.72	18,840.00	21,331.72	Brine+Main Steam	21,331.72
3-Feb-13	20,394.10	1,741.09	18,850.00	20,591.09	Brine+Main Steam	20,591.09
4-Feb-13	20,383.78	1,815.50	18,840.00	20,655.50	Brine+Main Steam	20,655.50
5-Feb-13	20,376.98	1,532.78	18,850.00	20,382.78	Brine+Main Steam	20,382.78
6-Feb-13	20,388.40	1,689.81	18,840.00	20,529.81	Brine+Main Steam	20,529.81
7-Feb-13	20,404.46	1,652.41	18,850.00	20,502.41	Brine+Main Steam	20,502.41
8-Feb-13	20,256.43	1,534.50	18,840.00	20,374.50	Brine+Main Steam	20,374.50
9-Feb-13	20,255.16	1,627.50	18,850.00	20,477.50	Brine+Main Steam	20,477.50
10-Feb-13	20,213.39	1,631.19	18,850.00	20,481.19	Brine+Main Steam	20,481.19
11-Feb-13	20,092.95	1,662.31	18,840.00	20,502.31	Brine+Main Steam	20,502.31
12-Feb-13	20,095.42	1,732.41	18,850.00	20,582.41	Brine+Main Steam	20,582.41
13-Feb-13	20,222.54	1,832.19	18,840.00	20,672.19	Brine+Main Steam	20,672.19
14-Feb-13	20,209.02	1,825.50	18,840.00	20,665.50	Brine+Main Steam	20,665.50
15-Feb-13	20,237.45	1,896.81	18,850.00	20,746.81	Brine+Main Steam	20,746.81
16-Feb-13	20,217.03	1,724.78	18,840.00	20,564.78	Brine+Main Steam	20,564.78
17-Feb-13	20,217.72	1,783.31	18,840.00	20,623.31	Brine+Main Steam	20,623.31
18-Feb-13	20,209.54	1,676.28	18,850.00	20,526.28	Brine+Main Steam	20,526.28
19-Feb-13	20,202.67	1,775.81	18,840.00	20,615.81	Brine+Main Steam	20,615.81
20-Feb-13	20,245.04	1,773.09	18,820.00	20,593.09	Brine+Main Steam	20,593.09
21-Feb-13	20,257.40	1,744.72	18,850.00	20,594.72	Brine+Main Steam	20,594.72
22-Feb-13	20,252.97	1,874.38	18,840.00	20,714.38	Brine+Main Steam	20,714.38
23-Feb-13	20,255.54	1,811.00	18,850.00	20,661.00	Brine+Main Steam	20,661.00
24-Feb-13	20,137.57	1,801.91	18,850.00	20,651.91	Brine+Main Steam	20,651.91
25-Feb-13	20,129.84	1,747.50	18,840.00	20,587.50	Brine+Main Steam	20,587.50
26-Feb-13	20,086.59	1,440.22	18,850.00	20,290.22	Brine+Main Steam	20,290.22
27-Feb-13	17,439.19	1,523.69	16,200.00	17,723.69	Brine+Main Steam	17,723.69
28-Feb-13	15,292.00	1,601.09	13,180.00	15,292.00	Wells	15,292.00
1-Mar-13	20,431.81	1,615.91	18,850.00	20,465.91	Brine+Main Steam	20,465.91
2-Mar-13	20,405.86	1,619.31	18,840.00	20,459.31	Brine+Main Steam	20,459.31
3-Mar-13	20,334.60	1,609.28	18,850.00	20,459.28	Brine+Main Steam	20,459.28
4-Mar-13	20,294.80	1,597.91	18,840.00	20,437.91	Brine+Main Steam	20,437.91
5-Mar-13	20,232.52	1,612.69	18,850.00	20,462.69	Brine+Main Steam	20,462.69
6-Mar-13	20,272.94	1,609.81	18,820.00	20,429.81	Brine+Main Steam	20,429.81
7-Mar-13	20,255.31	1,604.91	18,850.00	20,454.91	Brine+Main Steam	20,454.91
8-Mar-13	20,270.98	1,579.41	18,850.00	20,429.41	Brine+Main Steam	20,429.41
9-Mar-13	20,250.45	1,566.59	18,840.00	20,406.59	Brine+Main Steam	20,406.59
10-Mar-13	20,257.68	1,555.59	18,850.00	20,405.59	Brine+Main Steam	20,405.59
11-Mar-13	20,235.59	1,559.31	18,840.00	20,399.31	Brine+Main Steam	20,399.31
12-Mar-13	20,203.10	1,550.28	18,850.00	20,400.28	Brine+Main Steam	20,400.28
13-Mar-13	20,137.30	1,548.22	18,840.00	20,388.22	Brine+Main Steam	20,388.22
14-Mar-13	20,176.64	1,531.28	18,850.00	20,381.28	Brine+Main Steam	20,381.28
15-Mar-13	20,184.57	1,527.50	18,840.00	20,367.50	Brine+Main Steam	20,367.50
16-Mar-13	20,183.01	1,534.41	18,850.00	20,384.41	Brine+Main Steam	20,384.41
17-Mar-13	20,130.94	1,553.81	18,850.00	20,403.81	Brine+Main Steam	20,403.81
18-Mar-13	19,880.78	2,441.28	18,840.00	21,281.28	Brine+Main Steam	21,281.28

Date	M _{so,i,y}	M _{sb,y}	M _{sv,y} Main steam	Msb,y + Msv,y Brine+Main Steam	M _{s,conservative} Wells/Brine+Main Steam	M _s Tons
19-Mar-13	20,007.16	2,070.22	18,850.00	20,920.22	Brine+Main Steam	20,920.22
20-Mar-13	20,036.35	2,654.19	18,840.00	21,494.19	Brine+Main Steam	21,494.19
21-Mar-13	19,032.98	3,143.69	18,850.00	21,993.69	Brine+Main Steam	21,993.69
22-Mar-13	19,311.28	4,064.13	18,840.00	22,904.13	Brine+Main Steam	22,904.13
23-Mar-13	19,491.61	2,994.59	18,850.00	21,844.59	Brine+Main Steam	21,844.59
24-Mar-13	19,436.77	2,847.41	18,850.00	21,697.41	Brine+Main Steam	21,697.41
25-Mar-13	19,496.96	2,545.69	18,840.00	21,385.69	Brine+Main Steam	21,385.69
26-Mar-13	19,462.97	2,659.81	18,850.00	21,509.81	Brine+Main Steam	21,509.81
27-Mar-13	19,560.92	2,727.69	18,840.00	21,567.69	Brine+Main Steam	21,567.69
28-Mar-13	19,616.75	2,580.00	18,840.00	21,420.00	Brine+Main Steam	21,420.00
29-Mar-13	19,554.49	2,568.41	18,850.00	21,418.41	Brine+Main Steam	21,418.41
30-Mar-13	19,265.49	2,613.69	18,850.00	21,463.69	Brine+Main Steam	21,463.69
31-Mar-13	19,681.23	2,665.41	18,840.00	21,505.41	Brine+Main Steam	21,505.41
1-Apr-13	19,689.51	2,503.00	18,850.00	21,353.00	Brine+Main Steam	21,353.00
2-Apr-13	19,198.84	2,453.69	18,840.00	21,293.69	Brine+Main Steam	21,293.69
3-Apr-13	19,502.95	2,571.91	18,850.00	21,421.91	Brine+Main Steam	21,421.91
4-Apr-13	19,618.87	2,512.00	18,840.00	21,352.00	Brine+Main Steam	21,352.00
5-Apr-13	19,641.12	2,476.72	18,850.00	21,326.72	Brine+Main Steam	21,326.72
6-Apr-13	19,668.95	2,582.69	18,840.00	21,422.69	Brine+Main Steam	21,422.69
7-Apr-13	19,664.83	2,642.69	18,850.00	21,492.69	Brine+Main Steam	21,492.69
8-Apr-13	19,674.19	2,575.72	18,840.00	21,415.72	Brine+Main Steam	21,415.72
9-Apr-13	19,434.66	2,356.69	18,820.00	21,176.69	Brine+Main Steam	21,176.69
10-Apr-13	19,700.10	2,407.31	18,840.00	21,247.31	Brine+Main Steam	21,247.31
11-Apr-13	20,021.21	2,651.78	18,850.00	21,501.78	Brine+Main Steam	21,501.78
12-Apr-13	19,917.08	2,622.63	18,840.00	21,462.63	Brine+Main Steam	21,462.63
13-Apr-13	19,831.84	2,521.78	18,850.00	21,371.78	Brine+Main Steam	21,371.78
14-Apr-13	19,885.18	2,498.91	18,850.00	21,348.91	Brine+Main Steam	21,348.91
15-Apr-13	19,785.52	2,485.19	18,840.00	21,325.19	Brine+Main Steam	21,325.19
16-Apr-13	19,660.61	2,340.41	18,850.00	21,190.41	Brine+Main Steam	21,190.41
17-Apr-13	19,801.53	2,478.72	18,810.00	21,288.72	Brine+Main Steam	21,288.72
18-Apr-13	20,026.93	2,644.88	18,850.00	21,494.88	Brine+Main Steam	21,494.88
19-Apr-13	20,010.98	2,596.91	18,850.00	21,446.91	Brine+Main Steam	21,446.91
20-Apr-13	20,050.40	2,508.00	18,840.00	21,348.00	Brine+Main Steam	21,348.00
21-Apr-13	20,042.46	2,596.00	18,850.00	21,446.00	Brine+Main Steam	21,446.00
22-Apr-13	19,615.62	2,516.00	18,840.00	21,356.00	Brine+Main Steam	21,356.00
23-Apr-13	19,856.88	2,605.00	18,850.00	21,455.00	Brine+Main Steam	21,455.00
24-Apr-13	19,864.64	2,632.22	18,800.00	21,432.22	Brine+Main Steam	21,432.22
25-Apr-13	18,825.36	2,605.88	18,850.00	21,455.88	Brine+Main Steam	21,455.88
26-Apr-13	19,675.84	2,582.72	18,850.00	21,432.72	Brine+Main Steam	21,432.72
27-Apr-13	20,069.51	2,543.50	18,840.00	21,383.50	Brine+Main Steam	21,383.50
28-Apr-13	20,051.13	2,458.09	18,850.00	21,308.09	Brine+Main Steam	21,308.09
29-Apr-13	19,851.90	2,329.09	18,840.00	21,169.09	Brine+Main Steam	21,169.09
30-Apr-13	20,041.61	2,138.91	18,850.00	20,988.91	Brine+Main Steam	20,988.91
1-May-13	19,825.28	2,276.00	18,800.00	21,076.00	Brine+Main Steam	21,076.00
2-May-13	19,815.44	2,440.00	18,850.00	21,290.00	Brine+Main Steam	21,290.00

Date	M _{so,i,y}	M _{sb,y}	M _{sv,y}	M _{sb,y} + M _{sv,y}	M _{s,conservative}	M _s
	Wells	Brine	Main steam	Brine+Main Steam	Wells/Brine+Main Steam	Tons
3-May-13	19,836.87	2,417.69	18,850.00	21,267.69	Brine+Main Steam	21,267.69
4-May-13	19,880.53	2,570.22	18,840.00	21,410.22	Brine+Main Steam	21,410.22
5-May-13	19,807.11	2,204.19	18,850.00	21,054.19	Brine+Main Steam	21,054.19
6-May-13	19,810.65	1,733.09	18,840.00	20,573.09	Brine+Main Steam	20,573.09
7-May-13	19,845.18	1,893.81	18,850.00	20,743.81	Brine+Main Steam	20,743.81
8-May-13	19,839.77	1,861.69	18,780.00	20,641.69	Brine+Main Steam	20,641.69
9-May-13	19,859.69	1,902.13	18,850.00	20,752.13	Brine+Main Steam	20,752.13
10-May-13	19,843.64	1,968.38	18,840.00	20,808.38	Brine+Main Steam	20,808.38
11-May-13	19,845.26	1,899.00	18,850.00	20,749.00	Brine+Main Steam	20,749.00
12-May-13	19,772.42	1,879.31	18,850.00	20,729.31	Brine+Main Steam	20,729.31
13-May-13	19,733.72	1,915.09	18,840.00	20,755.09	Brine+Main Steam	20,755.09
14-May-13	19,748.62	1,830.09	18,850.00	20,680.09	Brine+Main Steam	20,680.09
15-May-13	19,759.33	1,863.91	18,790.00	20,653.91	Brine+Main Steam	20,653.91
16-May-13	19,763.91	1,938.50	18,840.00	20,778.50	Brine+Main Steam	20,778.50
17-May-13	19,752.33	1,865.81	18,850.00	20,715.81	Brine+Main Steam	20,715.81
18-May-13	19,742.51	1,820.91	18,840.00	20,660.91	Brine+Main Steam	20,660.91
19-May-13	19,730.39	1,888.38	18,850.00	20,738.38	Brine+Main Steam	20,738.38
20-May-13	20,181.80	1,424.69	18,850.00	20,274.69	Brine+Main Steam	20,274.69
21-May-13	20,326.89	0.00	18,840.00	20,326.89	Wells	20,326.89
22-May-13	20,323.48	0.00	18,820.00	20,323.48	Wells	20,323.48
23-May-13	19,714.79	0.00	18,840.00	19,714.79	Wells	19,714.79
24-May-13	19,713.77	0.00	18,850.00	19,713.77	Wells	19,713.77
25-May-13	19,693.66	0.00	18,850.00	19,693.66	Wells	19,693.66
26-May-13	19,638.84	0.00	18,840.00	19,638.84	Wells	19,638.84
27-May-13	19,665.12	0.00	18,850.00	19,665.12	Wells	19,665.12
28-May-13	20,032.61	0.00	18,840.00	20,032.61	Wells	20,032.61
29-May-13	20,052.80	0.00	18,830.00	20,052.80	Wells	20,052.80
30-May-13	20,020.22	0.00	18,850.00	20,020.22	Wells	20,020.22
31-May-13	20,056.66	0.00	18,850.00	20,056.66	Wells	20,056.66
1-Jun-13	19,662.95	0.00	18,720.00	19,662.95	Wells	19,662.95
2-Jun-13	19,646.95	0.00	18,850.00	19,646.95	Wells	19,646.95
3-Jun-13	18,168.48	0.00	18,850.00	18,850.00	Brine+Main Steam	18,850.00
4-Jun-13	17,832.47	0.00	18,840.00	18,840.00	Brine+Main Steam	18,840.00
5-Jun-13	19,341.13	0.00	18,730.00	19,341.13	Wells	19,341.13
6-Jun-13	17,946.93	1,255.75	18,840.00	20,095.75	Brine+Main Steam	20,095.75
7-Jun-13	17,929.73	1,050.19	18,850.00	19,900.19	Brine+Main Steam	19,900.19
8-Jun-13	17,954.43	989.69	18,840.00	19,829.69	Brine+Main Steam	19,829.69
9-Jun-13	17,930.43	997.38	18,850.00	19,847.38	Brine+Main Steam	19,847.38
10-Jun-13	17,936.73	1,010.25	13,140.00	17,936.73	Wells	17,936.73
11-Jun-13	17,940.72	1,003.25	18,850.00	19,853.25	Brine+Main Steam	19,853.25
12-Jun-13	17,920.83	988.25	18,820.00	19,808.25	Brine+Main Steam	19,808.25
13-Jun-13	17,892.01	993.06	18,850.00	19,843.06	Brine+Main Steam	19,843.06
14-Jun-13	17,882.40	1,003.19	18,840.00	19,843.19	Brine+Main Steam	19,843.19
15-Jun-13	17,856.49	990.50	18,850.00	19,840.50	Brine+Main Steam	19,840.50
16-Jun-13	17,837.33	985.25	18,850.00	19,835.25	Brine+Main Steam	19,835.25

Date	M _{so,i,y}	M _{sb,y}	M _{sv,y} Main steam	M _{sb,y} + M _{sv,y} Brine+Main Steam	M _{s,conservative} Wells/Brine+Main Steam	M _s Tons
	Wells	Brine				
17-Jun-13	17,832.43	969.75	18,840.00	19,809.75	Brine+Main Steam	19,809.75
18-Jun-13	17,844.80	963.50	18,850.00	19,813.50	Brine+Main Steam	19,813.50
19-Jun-13	17,845.58	951.94	18,840.00	19,791.94	Brine+Main Steam	19,791.94
20-Jun-13	17,842.83	948.69	18,840.00	19,788.69	Brine+Main Steam	19,788.69
21-Jun-13	17,838.08	882.63	18,850.00	19,732.63	Brine+Main Steam	19,732.63
22-Jun-13	17,830.51	899.50	18,850.00	19,749.50	Brine+Main Steam	19,749.50
23-Jun-13	17,803.38	924.19	18,840.00	19,764.19	Brine+Main Steam	19,764.19
24-Jun-13	17,789.29	920.81	18,850.00	19,770.81	Brine+Main Steam	19,770.81
25-Jun-13	17,768.69	932.38	18,840.00	19,772.38	Brine+Main Steam	19,772.38
26-Jun-13	17,762.09	916.31	18,850.00	19,766.31	Brine+Main Steam	19,766.31
27-Jun-13	17,748.31	914.38	18,840.00	19,754.38	Brine+Main Steam	19,754.38
28-Jun-13	17,731.87	904.19	18,850.00	19,754.19	Brine+Main Steam	19,754.19
29-Jun-13	17,718.27	879.63	18,850.00	19,729.63	Brine+Main Steam	19,729.63
30-Jun-13	17,710.18	887.31	18,840.00	19,727.31	Brine+Main Steam	19,727.31
1-Jul-13	19,253.09	895.31	18,850.00	19,745.31	Brine+Main Steam	19,745.31
2-Jul-13	19,241.18	901.88	18,840.00	19,741.88	Brine+Main Steam	19,741.88
3-Jul-13	19,215.30	2,069.81	18,830.00	20,899.81	Brine+Main Steam	20,899.81
4-Jul-13	19,193.86	2,322.06	18,840.00	21,162.06	Brine+Main Steam	21,162.06
5-Jul-13	19,179.67	2,164.50	18,850.00	21,014.50	Brine+Main Steam	21,014.50
6-Jul-13	19,170.45	1,680.50	18,840.00	20,520.50	Brine+Main Steam	20,520.50
7-Jul-13	19,169.56	2,084.50	18,850.00	20,934.50	Brine+Main Steam	20,934.50
8-Jul-13	19,160.28	1,710.25	18,850.00	20,560.25	Brine+Main Steam	20,560.25
9-Jul-13	19,148.03	1,740.19	18,840.00	20,580.19	Brine+Main Steam	20,580.19
10-Jul-13	19,140.96	1,934.19	18,850.00	20,784.19	Brine+Main Steam	20,784.19
11-Jul-13	19,147.53	1,960.13	18,840.00	20,800.13	Brine+Main Steam	20,800.13
12-Jul-13	19,142.28	1,884.19	18,850.00	20,734.19	Brine+Main Steam	20,734.19
13-Jul-13	19,137.65	1,816.56	18,840.00	20,656.56	Brine+Main Steam	20,656.56
14-Jul-13	19,096.64	1,742.94	18,850.00	20,592.94	Brine+Main Steam	20,592.94
15-Jul-13	19,139.92	1,624.69	18,850.00	20,474.69	Brine+Main Steam	20,474.69
16-Jul-13	19,127.66	1,645.31	18,840.00	20,485.31	Brine+Main Steam	20,485.31
17-Jul-13	19,114.01	1,678.31	18,800.00	20,478.31	Brine+Main Steam	20,478.31
18-Jul-13	19,111.22	1,670.88	18,850.00	20,520.88	Brine+Main Steam	20,520.88
19-Jul-13	19,086.04	1,637.63	18,840.00	20,477.63	Brine+Main Steam	20,477.63
20-Jul-13	19,077.31	1,602.75	18,850.00	20,452.75	Brine+Main Steam	20,452.75
21-Jul-13	19,049.12	1,615.63	18,850.00	20,465.63	Brine+Main Steam	20,465.63
22-Jul-13	19,045.75	1,601.88	18,840.00	20,441.88	Brine+Main Steam	20,441.88
23-Jul-13	19,031.72	1,610.94	18,850.00	20,460.94	Brine+Main Steam	20,460.94
24-Jul-13	19,026.00	1,613.38	18,830.00	20,443.38	Brine+Main Steam	20,443.38
25-Jul-13	19,017.34	1,650.94	18,840.00	20,490.94	Brine+Main Steam	20,490.94
26-Jul-13	18,996.11	1,615.75	18,850.00	20,465.75	Brine+Main Steam	20,465.75
27-Jul-13	18,930.20	1,545.50	18,850.00	20,395.50	Brine+Main Steam	20,395.50
28-Jul-13	18,987.63	1,524.00	18,840.00	20,364.00	Brine+Main Steam	20,364.00
29-Jul-13	18,987.68	1,488.44	18,850.00	20,338.44	Brine+Main Steam	20,338.44
30-Jul-13	18,971.09	1,480.69	18,840.00	20,320.69	Brine+Main Steam	20,320.69
31-Jul-13	18,964.56	1,459.19	18,790.00	20,249.19	Brine+Main Steam	20,249.19

Date	M _{so,i,y}	M _{sb,y}	M _{sv,y} Main steam	Msb,y + Msv,y Brine+Main Steam	M _{s,conservative} Wells/Brine+Main Steam	M _s Tons
1-Aug-13	18,986.34	1,457.50	18,850.00	20,307.50	Brine+Main Steam	20,307.50
2-Aug-13	18,970.63	1,495.81	18,850.00	20,345.81	Brine+Main Steam	20,345.81
3-Aug-13	18,929.11	1,470.13	18,840.00	20,310.13	Brine+Main Steam	20,310.13
4-Aug-13	18,885.51	1,421.00	18,850.00	20,271.00	Brine+Main Steam	20,271.00
5-Aug-13	18,873.91	1,150.06	18,840.00	19,990.06	Brine+Main Steam	19,990.06
6-Aug-13	18,845.88	1,464.19	18,840.00	20,304.19	Brine+Main Steam	20,304.19
7-Aug-13	17,497.00	1,422.94	18,030.00	19,452.94	Brine+Main Steam	19,452.94
8-Aug-13	17,210.26	1,466.69	17,460.00	18,926.69	Brine+Main Steam	18,926.69
9-Aug-13	19,218.82	1,465.38	18,840.00	20,305.38	Brine+Main Steam	20,305.38
10-Aug-13	19,156.89	1,456.94	18,850.00	20,306.94	Brine+Main Steam	20,306.94
11-Aug-13	19,096.18	1,446.31	18,850.00	20,296.31	Brine+Main Steam	20,296.31
12-Aug-13	19,077.46	1,434.38	18,840.00	20,274.38	Brine+Main Steam	20,274.38
13-Aug-13	19,071.26	1,430.50	18,850.00	20,280.50	Brine+Main Steam	20,280.50
14-Aug-13	19,070.98	1,424.81	18,820.00	20,244.81	Brine+Main Steam	20,244.81
15-Aug-13	19,063.94	1,426.56	18,840.00	20,266.56	Brine+Main Steam	20,266.56
16-Aug-13	19,044.53	1,415.63	18,850.00	20,265.63	Brine+Main Steam	20,265.63
17-Aug-13	19,027.99	1,399.31	18,850.00	20,249.31	Brine+Main Steam	20,249.31
18-Aug-13	19,016.86	1,373.81	18,840.00	20,213.81	Brine+Main Steam	20,213.81
19-Aug-13	19,014.49	1,367.25	18,850.00	20,217.25	Brine+Main Steam	20,217.25
20-Aug-13	19,001.48	1,342.31	18,840.00	20,182.31	Brine+Main Steam	20,182.31
21-Aug-13	18,986.98	1,311.69	18,800.00	20,111.69	Brine+Main Steam	20,111.69
22-Aug-13	18,951.00	1,315.50	18,850.00	20,165.50	Brine+Main Steam	20,165.50
23-Aug-13	18,936.60	1,322.81	18,850.00	20,172.81	Brine+Main Steam	20,172.81
24-Aug-13	18,932.19	1,320.63	18,840.00	20,160.63	Brine+Main Steam	20,160.63
25-Aug-13	18,939.84	1,290.81	18,850.00	20,140.81	Brine+Main Steam	20,140.81
26-Aug-13	18,944.62	1,277.75	18,840.00	20,117.75	Brine+Main Steam	20,117.75
27-Aug-13	18,930.65	1,291.63	16,420.00	18,930.65	Wells	18,930.65
28-Aug-13	18,926.53	1,315.38	16,160.00	18,926.53	Wells	18,926.53
29-Aug-13	18,926.65	1,327.94	16,150.00	18,926.65	Wells	18,926.65
30-Aug-13	18,928.64	1,316.31	16,160.00	18,928.64	Wells	18,928.64
31-Aug-13	18,919.17	1,296.75	16,150.00	18,919.17	Wells	18,919.17
1-Sep-13	18,908.29	1,273.50	16,150.00	18,908.29	Wells	18,908.29
2-Sep-13	18,909.76	1,079.50	18,200.00	19,279.50	Brine+Main Steam	19,279.50
3-Sep-13	18,912.13	948.63	18,840.00	19,788.63	Brine+Main Steam	19,788.63
4-Sep-13	18,927.63	801.13	18,780.00	19,581.13	Brine+Main Steam	19,581.13
5-Sep-13	18,915.59	909.56	18,840.00	19,749.56	Brine+Main Steam	19,749.56
6-Sep-13	18,888.22	909.44	18,850.00	19,759.44	Brine+Main Steam	19,759.44
7-Sep-13	18,866.06	932.06	18,840.00	19,772.06	Brine+Main Steam	19,772.06
8-Sep-13	18,825.02	924.63	18,850.00	19,774.63	Brine+Main Steam	19,774.63
9-Sep-13	18,790.46	920.50	18,850.00	19,770.50	Brine+Main Steam	19,770.50
10-Sep-13	18,757.89	946.06	18,840.00	19,786.06	Brine+Main Steam	19,786.06
11-Sep-13	18,744.52	941.13	18,830.00	19,771.13	Brine+Main Steam	19,771.13
12-Sep-13	18,714.45	962.13	18,240.00	19,202.13	Brine+Main Steam	19,202.13
13-Sep-13	18,675.14	955.69	16,150.00	18,675.14	Wells	18,675.14
14-Sep-13	18,671.61	967.19	16,150.00	18,671.61	Wells	18,671.61

Date	M _{so,i,y}	M _{sb,y}	M _{sv,y}	Msb,y + Msv,y	M _{s,conservative}	M _s
	Wells	Brine	Main steam	Brine+Main Steam	Wells/Brine+Main Steam	Tons
15-Sep-13	18,662.86	947.13	16,160.00	18,662.86	Wells	18,662.86
16-Sep-13	18,659.14	959.69	18,600.00	19,559.69	Brine+Main Steam	19,559.69
17-Sep-13	18,675.08	960.81	18,600.00	19,560.81	Brine+Main Steam	19,560.81
18-Sep-13	18,716.30	968.69	17,700.00	18,716.30	Wells	18,716.30
19-Sep-13	18,648.42	968.31	18,850.00	19,818.31	Brine+Main Steam	19,818.31
20-Sep-13	18,640.63	940.75	18,840.00	19,780.75	Brine+Main Steam	19,780.75
21-Sep-13	18,637.41	956.13	18,850.00	19,806.13	Brine+Main Steam	19,806.13
22-Sep-13	18,616.69	1,018.19	18,840.00	19,858.19	Brine+Main Steam	19,858.19
23-Sep-13	18,604.16	1,055.44	18,850.00	19,905.44	Brine+Main Steam	19,905.44
24-Sep-13	18,602.74	1,067.75	18,850.00	19,917.75	Brine+Main Steam	19,917.75
25-Sep-13	18,581.67	1,202.75	18,820.00	20,022.75	Brine+Main Steam	20,022.75
26-Sep-13	18,572.52	0.00	18,840.00	18,840.00	Brine+Main Steam	18,840.00
27-Sep-13	18,545.64	0.00	18,850.00	18,850.00	Brine+Main Steam	18,850.00
28-Sep-13	18,567.54	0.00	18,850.00	18,850.00	Brine+Main Steam	18,850.00
29-Sep-13	18,552.38	0.00	18,840.00	18,840.00	Brine+Main Steam	18,840.00
30-Sep-13	18,530.13	0.00	18,850.00	18,850.00	Brine+Main Steam	18,850.00
1-Oct-13	18,531.85	0.00	17,070.00	18,531.85	Wells	18,531.85
2-Oct-13	18,524.09	0.00	17,950.00	18,524.09	Wells	18,524.09
3-Oct-13	18,475.05	2,117.61	18,790.00	20,907.61	Brine+Main Steam	20,907.61
4-Oct-13	18,466.58	1,163.13	18,850.00	20,013.13	Brine+Main Steam	20,013.13
5-Oct-13	18,451.41	2,829.35	18,840.00	21,669.35	Brine+Main Steam	21,669.35
6-Oct-13	18,444.50	2,013.50	18,850.00	20,863.50	Brine+Main Steam	20,863.50
7-Oct-13	18,460.07	1,987.87	18,810.00	20,797.87	Brine+Main Steam	20,797.87
8-Oct-13	18,445.31	2,030.05	18,850.00	20,880.05	Brine+Main Steam	20,880.05
9-Oct-13	18,433.28	1,972.45	18,830.00	20,802.45	Brine+Main Steam	20,802.45
10-Oct-13	18,437.47	2,004.10	18,850.00	20,854.10	Brine+Main Steam	20,854.10
11-Oct-13	18,391.83	2,018.64	18,820.00	20,838.64	Brine+Main Steam	20,838.64
12-Oct-13	18,358.27	2,083.39	18,850.00	20,933.39	Brine+Main Steam	20,933.39
13-Oct-13	18,324.36	2,130.08	18,810.00	20,940.08	Brine+Main Steam	20,940.08
14-Oct-13	18,130.84	2,116.60	18,630.00	20,746.60	Brine+Main Steam	20,746.60
15-Oct-13	18,560.00	2,070.79	18,850.00	20,920.79	Brine+Main Steam	20,920.79
16-Oct-13	18,503.88	2,137.79	18,670.00	20,807.79	Brine+Main Steam	20,807.79
17-Oct-13	18,491.77	2,155.71	18,820.00	20,975.71	Brine+Main Steam	20,975.71
18-Oct-13	18,478.60	2,125.63	18,810.00	20,935.63	Brine+Main Steam	20,935.63
19-Oct-13	18,467.81	2,109.21	18,850.00	20,959.21	Brine+Main Steam	20,959.21
20-Oct-13	18,482.38	2,117.04	18,150.00	20,267.04	Brine+Main Steam	20,267.04
21-Oct-13	18,426.99	1,725.13	18,820.00	20,545.13	Brine+Main Steam	20,545.13
22-Oct-13	18,428.67	2,995.06	18,850.00	21,845.06	Brine+Main Steam	21,845.06
23-Oct-13	18,405.98	2,646.90	18,840.00	21,486.90	Brine+Main Steam	21,486.90
24-Oct-13	18,387.60	2,507.32	18,850.00	21,357.32	Brine+Main Steam	21,357.32
25-Oct-13	18,382.72	2,543.11	18,840.00	21,383.11	Brine+Main Steam	21,383.11
26-Oct-13	18,383.22	2,527.06	18,850.00	21,377.06	Brine+Main Steam	21,377.06
27-Oct-13	18,339.15	2,481.81	17,670.00	20,151.81	Brine+Main Steam	20,151.81
28-Oct-13	18,322.59	2,498.11	17,170.00	19,668.11	Brine+Main Steam	19,668.11
29-Oct-13	18,362.09	2,566.42	18,840.00	21,406.42	Brine+Main Steam	21,406.42

Date	M _{so,i,y}	M _{sb,y}	M _{sv,y}	Msb,y + Msv,y	M _{s,conservative}	M _s
	Wells	Brine	Main steam	Brine+Main Steam	Wells/Brine+Main Steam	Tons
30-Oct-13	18,325.53	2,522.05	18,820.00	21,342.05	Brine+Main Steam	21,342.05
31-Oct-13	18,335.29	2,363.42	18,840.00	21,203.42	Brine+Main Steam	21,203.42
1-Nov-13	18,341.72	2,455.30	18,850.00	21,305.30	Brine+Main Steam	21,305.30
2-Nov-13	18,328.09	2,384.67	18,850.00	21,234.67	Brine+Main Steam	21,234.67
3-Nov-13	18,320.90	2,350.95	18,840.00	21,190.95	Brine+Main Steam	21,190.95
4-Nov-13	18,317.40	2,627.03	18,850.00	21,477.03	Brine+Main Steam	21,477.03
5-Nov-13	18,303.71	2,568.18	18,840.00	21,408.18	Brine+Main Steam	21,408.18
6-Nov-13	18,273.65	2,584.54	18,800.00	21,384.54	Brine+Main Steam	21,384.54
7-Nov-13	18,285.96	2,607.10	18,830.00	21,437.10	Brine+Main Steam	21,437.10
8-Nov-13	18,294.90	2,409.42	18,700.00	21,109.42	Brine+Main Steam	21,109.42
9-Nov-13	18,274.45	2,440.45	18,140.00	20,580.45	Brine+Main Steam	20,580.45
10-Nov-13	18,199.45	2,230.42	18,470.00	20,700.42	Brine+Main Steam	20,700.42
11-Nov-13	18,188.13	1,986.24	17,200.00	19,186.24	Brine+Main Steam	19,186.24
12-Nov-13	18,144.06	1,813.38	16,160.00	18,144.06	Wells	18,144.06
13-Nov-13	18,034.88	1,877.56	17,050.00	18,927.56	Brine+Main Steam	18,927.56
14-Nov-13	17,784.14	2,420.27	18,620.00	21,040.27	Brine+Main Steam	21,040.27
15-Nov-13	18,296.28	2,836.11	18,840.00	21,676.11	Brine+Main Steam	21,676.11
16-Nov-13	18,275.71	3,362.90	18,850.00	22,212.90	Brine+Main Steam	22,212.90
17-Nov-13	18,239.65	3,201.64	18,840.00	22,041.64	Brine+Main Steam	22,041.64
18-Nov-13	18,257.21	3,183.77	18,850.00	22,033.77	Brine+Main Steam	22,033.77
19-Nov-13	18,274.71	4,407.26	18,850.00	23,257.26	Brine+Main Steam	23,257.26
20-Nov-13	18,247.21	3,052.09	18,770.00	21,822.09	Brine+Main Steam	21,822.09
21-Nov-13	18,235.08	2,932.20	18,850.00	21,782.20	Brine+Main Steam	21,782.20
22-Nov-13	18,204.71	2,882.56	18,840.00	21,722.56	Brine+Main Steam	21,722.56
23-Nov-13	18,202.33	2,888.82	18,840.00	21,728.82	Brine+Main Steam	21,728.82
24-Nov-13	18,153.46	2,879.30	18,850.00	21,729.30	Brine+Main Steam	21,729.30
25-Nov-13	18,137.14	2,919.47	18,840.00	21,759.47	Brine+Main Steam	21,759.47
26-Nov-13	18,115.51	2,880.36	18,850.00	21,730.36	Brine+Main Steam	21,730.36
27-Nov-13	18,162.80	2,839.12	18,820.00	21,659.12	Brine+Main Steam	21,659.12
28-Nov-13	16,944.88	2,796.32	18,850.00	21,646.32	Brine+Main Steam	21,646.32
29-Nov-13	17,433.31	2,752.63	18,850.00	21,602.63	Brine+Main Steam	21,602.63
30-Nov-13	18,015.00	2,713.27	18,840.00	21,553.27	Brine+Main Steam	21,553.27
1-Dec-13	18,002.75	2,539.29	18,850.00	21,389.29	Brine+Main Steam	21,389.29
2-Dec-13	17,912.38	2,763.04	18,840.00	21,603.04	Brine+Main Steam	21,603.04
3-Dec-13	17,669.31	2,616.31	18,850.00	21,466.31	Brine+Main Steam	21,466.31
4-Dec-13	17,914.06	2,594.31	18,770.00	21,364.31	Brine+Main Steam	21,364.31
5-Dec-13	18,251.38	2,504.50	18,710.00	21,214.50	Brine+Main Steam	21,214.50
6-Dec-13	18,307.75	2,706.57	18,660.00	21,366.57	Brine+Main Steam	21,366.57
7-Dec-13	18,302.56	2,643.33	18,560.00	21,203.33	Brine+Main Steam	21,203.33
8-Dec-13	18,289.69	2,456.81	17,800.00	20,256.81	Brine+Main Steam	20,256.81
9-Dec-13	18,267.81	3,350.75	13,410.00	18,267.81	Wells	18,267.81
10-Dec-13	18,192.19	3,127.75	16,230.00	19,357.75	Brine+Main Steam	19,357.75
11-Dec-13	18,227.44	3,985.19	16,150.00	20,135.19	Brine+Main Steam	20,135.19
12-Dec-13	18,212.00	3,358.81	16,150.00	19,508.81	Brine+Main Steam	19,508.81
13-Dec-13	18,194.50	3,174.88	16,160.00	19,334.88	Brine+Main Steam	19,334.88

Date	M _{so,i,y}	M _{sb,y}	M _{sv,y} Main steam	M _{sb,y} + M _{sv,y} Brine+Main Steam	M _{s,conservative} Wells/Brine+Main Steam	M _s Tons
14-Dec-13	18,176.88	3,125.31	16,150.00	19,275.31	Brine+Main Steam	19,275.31
15-Dec-13	18,166.19	2,966.50	16,160.00	19,126.50	Brine+Main Steam	19,126.50
16-Dec-13	18,098.31	2,834.06	17,820.00	20,654.06	Brine+Main Steam	20,654.06
17-Dec-13	18,063.50	2,740.63	18,390.00	21,130.63	Brine+Main Steam	21,130.63
18-Dec-13	18,019.00	2,730.69	18,400.00	21,130.69	Brine+Main Steam	21,130.69
19-Dec-13	18,006.13	2,867.94	17,700.00	20,567.94	Brine+Main Steam	20,567.94
20-Dec-13	18,015.81	2,802.69	17,420.00	20,222.69	Brine+Main Steam	20,222.69
21-Dec-13	17,959.56	2,752.00	17,990.00	20,742.00	Brine+Main Steam	20,742.00
22-Dec-13	17,948.13	2,732.31	18,000.00	20,732.31	Brine+Main Steam	20,732.31
23-Dec-13	18,001.81	2,558.06	16,270.00	18,828.06	Brine+Main Steam	18,828.06
24-Dec-13	17,957.56	2,287.19	16,240.00	18,527.19	Brine+Main Steam	18,527.19
25-Dec-13	17,944.69	2,088.94	16,160.00	18,248.94	Brine+Main Steam	18,248.94
26-Dec-13	17,943.81	2,188.00	16,320.00	18,508.00	Brine+Main Steam	18,508.00
27-Dec-13	17,887.69	2,136.50	17,260.00	19,396.50	Brine+Main Steam	19,396.50
28-Dec-13	17,823.75	2,073.31	18,390.00	20,463.31	Brine+Main Steam	20,463.31
29-Dec-13	17,779.38	2,087.38	18,260.00	20,347.38	Brine+Main Steam	20,347.38
30-Dec-13	17,747.88	2,106.31	17,900.00	20,006.31	Brine+Main Steam	20,006.31
31-Dec-13	17,710.00	2,621.50	18,020.00	20,641.50	Brine+Main Steam	20,641.50
1-Jan-14	16484.63	2603.69	16610.00	19213.69	Brine+Main Steam	19213.69
2-Jan-14	17653.13	2573.00	18090.00	20663.00	Brine+Main Steam	20663.00
3-Jan-14	17870.69	2626.00	18840.00	21466.00	Brine+Main Steam	21466.00
4-Jan-14	17817.50	2681.00	18850.00	21531.00	Brine+Main Steam	21531.00
5-Jan-14	17778.06	2799.00	18850.00	21649.00	Brine+Main Steam	21649.00
6-Jan-14	17723.25	3031.00	18830.00	21861.00	Brine+Main Steam	21861.00
7-Jan-14	17691.50	2883.00	18850.00	21733.00	Brine+Main Steam	21733.00
8-Jan-14	17673.06	2978.00	18840.00	21818.00	Brine+Main Steam	21818.00
9-Jan-14	17658.44	2964.00	18850.00	21814.00	Brine+Main Steam	21814.00
10-Jan-14	17629.69	2975.00	18840.00	21815.00	Brine+Main Steam	21815.00
11-Jan-14	17611.00	2758.00	18850.00	21608.00	Brine+Main Steam	21608.00
12-Jan-14	17606.56	2924.00	18820.00	21744.00	Brine+Main Steam	21744.00
13-Jan-14	17582.50	3000.00	18830.00	21830.00	Brine+Main Steam	21830.00
14-Jan-14	17566.31	2802.00	18850.00	21652.00	Brine+Main Steam	21652.00
15-Jan-14	17507.81	2870.00	18840.00	21710.00	Brine+Main Steam	21710.00
16-Jan-14	17491.69	2798.00	18850.00	21648.00	Brine+Main Steam	21648.00
17-Jan-14	17482.50	2798.00	18840.00	21638.00	Brine+Main Steam	21638.00
18-Jan-14	17462.81	2828.00	18850.00	21678.00	Brine+Main Steam	21678.00
19-Jan-14	17419.63	2822.00	18820.00	21642.00	Brine+Main Steam	21642.00
20-Jan-14	17391.00	2979.00	18580.00	21559.00	Brine+Main Steam	21559.00
21-Jan-14	17391.75	2993.00	18520.00	21513.00	Brine+Main Steam	21513.00
22-Jan-14	17289.00	2822.00	14960.00	17782.00	Brine+Main Steam	17782.00
23-Jan-14	17334.63	2794.00	16680.00	19474.00	Brine+Main Steam	19474.00
24-Jan-14	17373.88	2924.00	17900.00	20824.00	Brine+Main Steam	20824.00
25-Jan-14	17336.44	2949.00	18570.00	21519.00	Brine+Main Steam	21519.00
26-Jan-14	17322.06	2894.00	18350.00	21244.00	Brine+Main Steam	21244.00
27-Jan-14	17257.75	2882.00	18290.00	21172.00	Brine+Main Steam	21172.00
28-Jan-14	17233.50	2810.00	18210.00	21020.00	Brine+Main Steam	21020.00

Date	M _{so,i,y}	M _{sb,y}	M _{sv,y} Main steam	M _{sb,y} + M _{sv,y} Brine+Main Steam	M _{s,conservative} Wells/Brine+Main Steam	M _s Tons
29-Jan-14	17201.38	2494.00	18270.00	20764.00	Brine+Main Steam	20764.00
30-Jan-14	17039.31	2799.00	18450.00	21249.00	Brine+Main Steam	21249.00
31-Jan-14	16389.88	2901.00	17740.00	20641.00	Brine+Main Steam	20641.00
1-Feb-14	16406.31	3152.00	17520.00	20672.00	Brine+Main Steam	20672.00
2-Feb-14	17035.31	3284.00	18850.00	22134.00	Brine+Main Steam	22134.00
3-Feb-14	16904.38	2978.00	18840.00	21818.00	Brine+Main Steam	21818.00
4-Feb-14	16897.63	3298.00	18830.00	22128.00	Brine+Main Steam	22128.00
5-Feb-14	16889.06	2939.00	18770.00	21709.00	Brine+Main Steam	21709.00
6-Feb-14	16917.50	2883.00	18820.00	21703.00	Brine+Main Steam	21703.00
7-Feb-14	16889.63	2923.00	18760.00	21683.00	Brine+Main Steam	21683.00
8-Feb-14	16894.19	2873.00	18750.00	21623.00	Brine+Main Steam	21623.00
9-Feb-14	16887.19	2832.00	18840.00	21672.00	Brine+Main Steam	21672.00
10-Feb-14	16896.00	2791.00	18790.00	21581.00	Brine+Main Steam	21581.00
11-Feb-14	16847.81	2745.00	18840.00	21585.00	Brine+Main Steam	21585.00
12-Feb-14	16888.31	2691.00	18830.00	21521.00	Brine+Main Steam	21521.00
13-Feb-14	16839.50	3106.00	18530.00	21636.00	Brine+Main Steam	21636.00
14-Feb-14	16757.50	2584.00	18530.00	21114.00	Brine+Main Steam	21114.00
15-Feb-14	16753.31	2408.00	16160.00	18568.00	Brine+Main Steam	18568.00
16-Feb-14	16690.81	2258.00	16150.00	18408.00	Brine+Main Steam	18408.00
17-Feb-14	15526.38	2166.00	16150.00	18316.00	Brine+Main Steam	18316.00
18-Feb-14	15241.31	2153.00	16160.00	18313.00	Brine+Main Steam	18313.00
19-Feb-14	15237.81	2152.00	16150.00	18302.00	Brine+Main Steam	18302.00
20-Feb-14	15225.19	2179.00	16150.00	18329.00	Brine+Main Steam	18329.00
21-Feb-14	15217.56	2215.00	16150.00	18365.00	Brine+Main Steam	18365.00
22-Feb-14	17925.81	2249.00	17860.00	20109.00	Brine+Main Steam	20109.00
23-Feb-14	18608.44	2343.00	18630.00	20973.00	Brine+Main Steam	20973.00
24-Feb-14	18589.25	2214.00	18530.00	20744.00	Brine+Main Steam	20744.00
25-Feb-14	18481.44	2379.00	18670.00	21049.00	Brine+Main Steam	21049.00
26-Feb-14	18455.81	2233.00	18790.00	21023.00	Brine+Main Steam	21023.00
27-Feb-14	18426.75	2218.00	18800.00	21018.00	Brine+Main Steam	21018.00
28-Feb-14	18431.94	2243.00	18810.00	21053.00	Brine+Main Steam	21053.00
1-Mar-14	18416.06	2180.00	18790.00	20970.00	Brine+Main Steam	20970.00
2-Mar-14	18422.94	2228.00	18840.00	21068.00	Brine+Main Steam	21068.00
3-Mar-14	18412.31	2446.00	18790.00	21236.00	Brine+Main Steam	21236.00
4-Mar-14	18443.38	2169.00	18710.00	20879.00	Brine+Main Steam	20879.00
5-Mar-14	18423.50	2223.00	18690.00	20913.00	Brine+Main Steam	20913.00
6-Mar-14	18415.31	2320.00	18650.00	20970.00	Brine+Main Steam	20970.00
7-Mar-14	18411.31	2214.00	18650.00	20864.00	Brine+Main Steam	20864.00
8-Mar-14	18378.50	2272.00	18760.00	21032.00	Brine+Main Steam	21032.00
9-Mar-14	18382.06	2342.00	18760.00	21102.00	Brine+Main Steam	21102.00
10-Mar-14	18365.69	2185.00	18540.00	20725.00	Brine+Main Steam	20725.00
11-Mar-14	18280.94	2224.00	18640.00	20864.00	Brine+Main Steam	20864.00
12-Mar-14	18269.31	2255.00	18480.00	20735.00	Brine+Main Steam	20735.00
13-Mar-14	18243.00	2248.00	18610.00	20858.00	Brine+Main Steam	20858.00
14-Mar-14	18240.75	2337.00	18630.00	20967.00	Brine+Main Steam	20967.00
15-Mar-14	18244.63	2267.00	18520.00	20787.00	Brine+Main Steam	20787.00

Date	M _{so,i,y}	M _{sb,y}	M _{sv,y} Main steam	Msb,y + Msv,y Brine+Main Steam	M _{s,conservative} Wells/Brine+Main Steam	M _s Tons
16-Mar-14	18102.13	5642.00	18820.00	24462.00	Brine+Main Steam	24462.00
17-Mar-14	18411.31	2214.00	18650.00	20864.00	Brine+Main Steam	20864.00
18-Mar-14	17000.56	7237.00	18840.00	26077.00	Brine+Main Steam	26077.00
19-Mar-14	16766.94	7074.00	18850.00	25924.00	Brine+Main Steam	25924.00
20-Mar-14	16761.75	7010.00	18840.00	25850.00	Brine+Main Steam	25850.00
21-Mar-14	16759.50	6999.00	18850.00	25849.00	Brine+Main Steam	25849.00
22-Mar-14	16756.31	7024.00	18840.00	25864.00	Brine+Main Steam	25864.00
23-Mar-14	16758.44	6987.00	18850.00	25837.00	Brine+Main Steam	25837.00
24-Mar-14	16758.19	6937.00	18850.00	25787.00	Brine+Main Steam	25787.00
25-Mar-14	16757.50	6893.00	18840.00	25733.00	Brine+Main Steam	25733.00
26-Mar-14	16780.88	6450.00	18850.00	25300.00	Brine+Main Steam	25300.00
27-Mar-14	16752.94	6475.00	18840.00	25315.00	Brine+Main Steam	25315.00
28-Mar-14	16737.69	6374.00	18850.00	25224.00	Brine+Main Steam	25224.00
29-Mar-14	16729.00	6370.00	18840.00	25210.00	Brine+Main Steam	25210.00
30-Mar-14	16729.56	6300.00	18850.00	25150.00	Brine+Main Steam	25150.00
31-Mar-14	16758.75	6353.00	18850.00	25203.00	Brine+Main Steam	25203.00
1-Apr-14	16674.50	6306.00	18840.00	25146.00	Brine+Main Steam	25146.00
2-Apr-14	16745.19	6432.00	18830.00	25262.00	Brine+Main Steam	25262.00
3-Apr-14	16719.31	6361.00	18840.00	25201.00	Brine+Main Steam	25201.00
4-Apr-14	16717.50	6376.00	18850.00	25226.00	Brine+Main Steam	25226.00
5-Apr-14	16718.69	5882.00	18850.00	24732.00	Brine+Main Steam	24732.00
6-Apr-14	16710.50	6491.00	18840.00	25331.00	Brine+Main Steam	25331.00
7-Apr-14	17521.31	6549.00	18850.00	25399.00	Brine+Main Steam	25399.00
8-Apr-14	17952.00	6537.00	18840.00	25377.00	Brine+Main Steam	25377.00
9-Apr-14	10271.63	6563.00	7320.00	13883.00	Brine+Main Steam	13883.00
10-Apr-14	9017.13	6522.00	9750.00	16272.00	Brine+Main Steam	16272.00
11-Apr-14	14148.00	6405.00	15330.00	21735.00	Brine+Main Steam	21735.00
12-Apr-14	16872.81	6311.00	18840.00	25151.00	Brine+Main Steam	25151.00
13-Apr-14	16775.50	6338.00	18850.00	25188.00	Brine+Main Steam	25188.00
14-Apr-14	16828.88	6370.00	18840.00	25210.00	Brine+Main Steam	25210.00
15-Apr-14	18373.38	6237.00	18850.00	25087.00	Brine+Main Steam	25087.00
16-Apr-14	18335.00	6049.00	18390.00	24439.00	Brine+Main Steam	24439.00
17-Apr-14	18287.44	6085.00	15410.00	21495.00	Brine+Main Steam	21495.00
18-Apr-14	18263.31	6038.00	18930.00	24968.00	Brine+Main Steam	24968.00
19-Apr-14	18251.06	5971.00	18970.00	24941.00	Brine+Main Steam	24941.00
20-Apr-14	18195.31	5864.00	20010.00	25874.00	Brine+Main Steam	25874.00
21-Apr-14	13468.56	5968.00	17930.00	23898.00	Brine+Main Steam	23898.00
22-Apr-14	18476.31	5904.00	19230.00	25134.00	Brine+Main Steam	25134.00
23-Apr-14	18329.56	5793.00	18500.00	24293.00	Brine+Main Steam	24293.00
24-Apr-14	18292.13	5638.00	18850.00	24488.00	Brine+Main Steam	24488.00
25-Apr-14	18220.50	5634.00	18840.00	24474.00	Brine+Main Steam	24474.00
26-Apr-14	18200.56	5672.00	18850.00	24522.00	Brine+Main Steam	24522.00
27-Apr-14	18195.75	5641.00	18840.00	24481.00	Brine+Main Steam	24481.00
28-Apr-14	18157.25	5571.00	18850.00	24421.00	Brine+Main Steam	24421.00
29-Apr-14	18154.75	5503.00	18850.00	24353.00	Brine+Main Steam	24353.00
30-Apr-14	18176.75	5458.00	18840.00	24298.00	Brine+Main Steam	24298.00

Date	M _{so,i,y}	M _{sb,y}	M _{sv,y} Main steam	Msb,y + Msv,y Brine+Main Steam	M _{s,conservative} Wells/Brine+Main Steam	M _s Tons
1-May-14	18131.75	5390.00	18290.00	23680.00	Brine+Main Steam	23680.00
2-May-14	18133.75	5283.00	18770.00	24053.00	Brine+Main Steam	24053.00
3-May-14	18106.31	5227.00	18840.00	24067.00	Brine+Main Steam	24067.00
4-May-14	18072.81	5225.00	18850.00	24075.00	Brine+Main Steam	24075.00
5-May-14	18076.69	5048.00	18840.00	23888.00	Brine+Main Steam	23888.00
6-May-14	18081.50	4787.00	18850.00	23637.00	Brine+Main Steam	23637.00
7-May-14	18084.69	4794.00	18840.00	23634.00	Brine+Main Steam	23634.00
8-May-14	18041.00	4992.00	18850.00	23842.00	Brine+Main Steam	23842.00
9-May-14	18041.75	4964.00	18850.00	23814.00	Brine+Main Steam	23814.00
10-May-14	18015.69	4831.00	18840.00	23671.00	Brine+Main Steam	23671.00
11-May-14	17994.06	4779.00	18850.00	23629.00	Brine+Main Steam	23629.00
12-May-14	17987.81	4796.00	18840.00	23636.00	Brine+Main Steam	23636.00
13-May-14	17974.44	4628.00	18850.00	23478.00	Brine+Main Steam	23478.00
14-May-14	17961.38	4636.00	18840.00	23476.00	Brine+Main Steam	23476.00
15-May-14	17960.19	4695.00	18850.00	23545.00	Brine+Main Steam	23545.00
16-May-14	17969.44	4566.00	18840.00	23406.00	Brine+Main Steam	23406.00
17-May-14	17976.00	4541.00	18850.00	23391.00	Brine+Main Steam	23391.00
18-May-14	17938.25	4651.00	18850.00	23501.00	Brine+Main Steam	23501.00
19-May-14	17948.25	6207.00	18840.00	25047.00	Brine+Main Steam	25047.00
20-May-14	17939.06	4600.00	18850.00	23450.00	Brine+Main Steam	23450.00
21-May-14	17915.63	4547.00	18840.00	23387.00	Brine+Main Steam	23387.00
22-May-14	17908.06	4655.00	18850.00	23505.00	Brine+Main Steam	23505.00
23-May-14	17896.88	4627.00	18840.00	23467.00	Brine+Main Steam	23467.00
24-May-14	17893.81	4481.00	18840.00	23321.00	Brine+Main Steam	23321.00
25-May-14	17853.50	4482.00	18850.00	23332.00	Brine+Main Steam	23332.00
26-May-14	17847.38	4319.00	18840.00	23159.00	Brine+Main Steam	23159.00
27-May-14	17826.68	4400.00	18850.00	23250.00	Brine+Main Steam	23250.00
28-May-14	17834.63	4370.00	18840.00	23210.00	Brine+Main Steam	23210.00
29-May-14	17831.45	4234.00	18850.00	23084.00	Brine+Main Steam	23084.00
30-May-14	17847.15	4358.00	18840.00	23198.00	Brine+Main Steam	23198.00
31-May-14	17826.13	4268.00	18850.00	23118.00	Brine+Main Steam	23118.00
1-Jun-14	17808.86	4271.00	18850.00	23121.00	Brine+Main Steam	23121.00
2-Jun-14	17746.28	4168.00	18840.00	23008.00	Brine+Main Steam	23008.00
3-Jun-14	17647.02	4315.00	18850.00	23165.00	Brine+Main Steam	23165.00
4-Jun-14	16639.08	4213.00	18840.00	23053.00	Brine+Main Steam	23053.00
5-Jun-14	17581.76	4096.00	18850.00	22946.00	Brine+Main Steam	22946.00
6-Jun-14	17779.21	4146.00	18840.00	22986.00	Brine+Main Steam	22986.00
7-Jun-14	17775.25	4112.81	18850.00	22962.81	Brine+Main Steam	22962.81
8-Jun-14	17721.58	4148.86	18850.00	22998.86	Brine+Main Steam	22998.86
9-Jun-14	17681.58	4430.26	18858.84	23289.10	Brine+Main Steam	23289.10
10-Jun-14	17140.12	4198.93	18868.85	23067.78	Brine+Main Steam	23067.78
11-Jun-14	17690.88	4151.86	18858.84	23010.70	Brine+Main Steam	23010.70
12-Jun-14	17659.62	4019.68	18868.85	22888.53	Brine+Main Steam	22888.53
13-Jun-14	17644.50	4065.06	18868.85	22933.91	Brine+Main Steam	22933.91
14-Jun-14	17625.37	4447.44	18858.84	23306.28	Brine+Main Steam	23306.28
15-Jun-14	17532.99	4440.44	18868.85	23309.29	Brine+Main Steam	23309.29

Date	M _{so,i,y}	M _{sb,y}	M _{sv,y} Main steam	Msb,y + Msv,y Brine+Main Steam	M _{s,conservative} Wells/Brine+Main Steam	M _s Tons
16-Jun-14	17463.02	4274.00	18858.84	23132.84	Brine+Main Steam	23132.84
17-Jun-14	17509.73	4262.00	18868.85	23130.85	Brine+Main Steam	23130.85
18-Jun-14	17559.08	4274.00	18608.59	22882.59	Brine+Main Steam	22882.59
19-Jun-14	17575.65	4357.00	13500.00	17857.00	Brine+Main Steam	17857.00
20-Jun-14	17552.14	4227.00	18850.00	23077.00	Brine+Main Steam	23077.00
21-Jun-14	17553.33	5206.00	18840.00	24046.00	Brine+Main Steam	24046.00
22-Jun-14	17518.01	4824.00	18850.00	23674.00	Brine+Main Steam	23674.00
23-Jun-14	17511.57	5321.00	18840.00	24161.00	Brine+Main Steam	24161.00
24-Jun-14	17484.25	6438.00	18850.00	25288.00	Brine+Main Steam	25288.00
25-Jun-14	17478.99	3839.00	18840.00	22679.00	Brine+Main Steam	22679.00
26-Jun-14	17477.18	3995.00	18850.00	22845.00	Brine+Main Steam	22845.00
27-Jun-14	17464.37	4084.00	18850.00	22934.00	Brine+Main Steam	22934.00
28-Jun-14	17464.07	4139.00	18840.00	22979.00	Brine+Main Steam	22979.00
29-Jun-14	17483.46	4151.00	18850.00	23001.00	Brine+Main Steam	23001.00
30-Jun-14	17457.33	4162.00	18840.00	23002.00	Brine+Main Steam	23002.00
1-Jul-14	17471.71	4142.00	18850.00	22992.00	Brine+Main Steam	22992.00
2-Jul-14	17435.45	4282.00	18840.00	23122.00	Brine+Main Steam	23122.00
3-Jul-14	17396.57	4284.00	18850.00	23134.00	Brine+Main Steam	23134.00
4-Jul-14	17416.04	4296.00	18850.00	23146.00	Brine+Main Steam	23146.00
5-Jul-14	17392.09	4211.01	18840.00	23051.01	Brine+Main Steam	23051.01
6-Jul-14	17475.02	3667.82	18850.00	22517.82	Brine+Main Steam	22517.82
7-Jul-14	17564.21	4828.56	18840.00	23668.56	Brine+Main Steam	23668.56
8-Jul-14	17500.94	4720.63	18850.00	23570.63	Brine+Main Steam	23570.63
9-Jul-14	17436.92	4759.08	18840.00	23599.08	Brine+Main Steam	23599.08
10-Jul-14	17444.99	4715.13	18850.00	23565.13	Brine+Main Steam	23565.13
11-Jul-14	17430.56	4757.48	18840.00	23597.48	Brine+Main Steam	23597.48
12-Jul-14	17392.95	4752.36	18850.00	23602.36	Brine+Main Steam	23602.36
13-Jul-14	17363.54	4676.72	18850.00	23526.72	Brine+Main Steam	23526.72
14-Jul-14	17356.09	3979.05	18840.00	22819.05	Brine+Main Steam	22819.05
15-Jul-14	17343.80	5100.80	18850.00	23950.80	Brine+Main Steam	23950.80
16-Jul-14	17346.82	4392.36	18840.00	23232.36	Brine+Main Steam	23232.36
17-Jul-14	17317.93	4465.04	18840.00	23305.04	Brine+Main Steam	23305.04
18-Jul-14	17303.44	4296.19	18840.00	23136.19	Brine+Main Steam	23136.19
19-Jul-14	17322.12	4463.26	18850.00	23313.26	Brine+Main Steam	23313.26
20-Jul-14	17287.91	4391.09	18790.00	23181.09	Brine+Main Steam	23181.09
21-Jul-14	17326.38	3970.59	18850.00	22820.59	Brine+Main Steam	22820.59
22-Jul-14	17306.79	5038.53	18850.00	23888.53	Brine+Main Steam	23888.53
23-Jul-14	17281.95	3795.77	18840.00	22635.77	Brine+Main Steam	22635.77
24-Jul-14	17273.49	4716.90	18850.00	23566.90	Brine+Main Steam	23566.90
25-Jul-14	17266.09	4447.79	18840.00	23287.79	Brine+Main Steam	23287.79
26-Jul-14	17261.53	4420.30	18850.00	23270.30	Brine+Main Steam	23270.30
27-Jul-14	17264.78	4398.02	18850.00	23248.02	Brine+Main Steam	23248.02
28-Jul-14	17242.15	4417.13	18840.00	23257.13	Brine+Main Steam	23257.13
29-Jul-14	17272.06	4362.50	18850.00	23212.50	Brine+Main Steam	23212.50
30-Jul-14	17295.20	4334.40	18840.00	23174.40	Brine+Main Steam	23174.40
31-Jul-14	17297.74	4254.50	18850.00	23104.50	Brine+Main Steam	23104.50

Date	M _{so,i,y}	M _{sb,y}	M _{sv,y} Main steam	Msb,y + Msv,y Brine+Main Steam	M _{s,conservative} Wells/Brine+Main Steam	M _s Tons
	Wells	Brine				
1-Aug-14	17313.24	4137.50	18850.00	22987.50	Brine+Main Steam	22987.50
2-Aug-14	17300.87	4166.00	18840.00	23006.00	Brine+Main Steam	23006.00
3-Aug-14	17300.08	4134.20	18850.00	22984.20	Brine+Main Steam	22984.20
4-Aug-14	17283.64	4693.20	18840.00	23533.20	Brine+Main Steam	23533.20
5-Aug-14	17269.39	4478.30	18850.00	23328.30	Brine+Main Steam	23328.30
6-Aug-14	17235.13	4405.89	18840.00	23245.89	Brine+Main Steam	23245.89
7-Aug-14	17251.15	4297.20	18850.00	23147.20	Brine+Main Steam	23147.20
8-Aug-14	17210.13	4157.50	18850.00	23007.50	Brine+Main Steam	23007.50
9-Aug-14	17186.23	4078.11	18840.00	22918.11	Brine+Main Steam	22918.11
10-Aug-14	17198.20	4003.69	18830.00	22833.69	Brine+Main Steam	22833.69
11-Aug-14	17030.15	4232.00	18470.00	22702.00	Brine+Main Steam	22702.00
12-Aug-14	17100.88	4595.20	18850.00	23445.20	Brine+Main Steam	23445.20
13-Aug-14	17122.55	4658.91	18830.00	23488.91	Brine+Main Steam	23488.91
14-Aug-14	17097.71	5223.09	18850.00	24073.09	Brine+Main Steam	24073.09
15-Aug-14	17102.19	4643.76	18840.00	23483.76	Brine+Main Steam	23483.76
16-Aug-14	17096.07	4558.11	18850.00	23408.11	Brine+Main Steam	23408.11
17-Aug-14	15686.01	4781.41	18800.00	23581.41	Brine+Main Steam	23581.41
18-Aug-14	16385.69	4652.07	18840.00	23492.07	Brine+Main Steam	23492.07
19-Aug-14	17078.43	4156.03	18850.00	23006.03	Brine+Main Steam	23006.03
20-Aug-14	17056.56	4169.63	18840.00	23009.63	Brine+Main Steam	23009.63
21-Aug-14	17007.33	4702.67	18850.00	23552.67	Brine+Main Steam	23552.67
22-Aug-14	16991.39	4486.11	18840.00	23326.11	Brine+Main Steam	23326.11
23-Aug-14	16923.35	4425.89	18850.00	23275.89	Brine+Main Steam	23275.89
24-Aug-14	16908.29	4491.67	18840.00	23331.67	Brine+Main Steam	23331.67
25-Aug-14	16894.65	4552.77	18850.00	23402.77	Brine+Main Steam	23402.77
26-Aug-14	16809.07	4455.24	18850.00	23305.24	Brine+Main Steam	23305.24
27-Aug-14	16877.07	4317.19	18830.00	23147.19	Brine+Main Steam	23147.19
28-Aug-14	16886.02	4226.31	18840.00	23066.31	Brine+Main Steam	23066.31
29-Aug-14	16889.19	3946.71	18840.00	22786.71	Brine+Main Steam	22786.71
30-Aug-14	16893.56	4257.87	18850.00	23107.87	Brine+Main Steam	23107.87
31-Aug-14	16894.39	4277.36	18840.00	23117.36	Brine+Main Steam	23117.36
1-Sep-14	16880.09	4247.09	18850.00	23097.09	Brine+Main Steam	23097.09
2-Sep-14	16862.92	4287.98	18850.00	23137.98	Brine+Main Steam	23137.98
3-Sep-14	16873.70	4272.73	18820.00	23092.73	Brine+Main Steam	23092.73
4-Sep-14	16837.32	4491.80	18850.00	23341.80	Brine+Main Steam	23341.80
5-Sep-14	16756.08	4445.80	18850.00	23295.80	Brine+Main Steam	23295.80
6-Sep-14	16733.36	4496.90	18840.00	23336.90	Brine+Main Steam	23336.90
7-Sep-14	16750.57	4477.30	18850.00	23327.30	Brine+Main Steam	23327.30
8-Sep-14	15890.26	4117.50	18550.00	22667.50	Brine+Main Steam	22667.50
9-Sep-14	16132.43	4178.00	18590.00	22768.00	Brine+Main Steam	22768.00
10-Sep-14	15236.14	4176.70	18740.00	22916.70	Brine+Main Steam	22916.70
11-Sep-14	15336.83	4175.60	18530.00	22705.60	Brine+Main Steam	22705.60
12-Sep-14	15828.74	4130.89	18090.00	22220.89	Brine+Main Steam	22220.89
13-Sep-14	15697.58	4780.50	18750.00	23530.50	Brine+Main Steam	23530.50
14-Sep-14	15694.05	4589.00	18810.00	23399.00	Brine+Main Steam	23399.00
15-Sep-14	15711.44	4456.81	18820.00	23276.81	Brine+Main Steam	23276.81

Date	M _{so,i,y}	M _{sb,y}	M _{sv,y} Main steam	Msb,y + Msv,y Brine+Main Steam	M _{s,conservative} Wells/Brine+Main Steam	M _s Tons
16-Sep-14	15641.51	4366.50	18700.00	23066.50	Brine+Main Steam	23066.50
17-Sep-14	15422.09	4348.09	18840.00	23188.09	Brine+Main Steam	23188.09
18-Sep-14	15745.87	4300.91	18840.00	23140.91	Brine+Main Steam	23140.91
19-Sep-14	15549.12	4264.50	18820.00	23084.50	Brine+Main Steam	23084.50
20-Sep-14	15566.56	4317.80	18820.00	23137.80	Brine+Main Steam	23137.80
21-Sep-14	15520.21	4387.59	18690.00	23077.59	Brine+Main Steam	23077.59
22-Sep-14	16130.86	4179.41	18380.00	22559.41	Brine+Main Steam	22559.41
23-Sep-14	16355.10	4530.80	18540.00	23070.80	Brine+Main Steam	23070.80
24-Sep-14	17406.97	4466.41	18770.00	23236.41	Brine+Main Steam	23236.41
25-Sep-14	18014.47	4484.89	18810.00	23294.89	Brine+Main Steam	23294.89
26-Sep-14	17977.83	4446.41	18590.00	23036.41	Brine+Main Steam	23036.41
27-Sep-14	17986.21	4483.39	18670.00	23153.39	Brine+Main Steam	23153.39
28-Sep-14	17996.39	4532.70	18580.00	23112.70	Brine+Main Steam	23112.70
29-Sep-14	18037.29	4821.20	18850.00	23671.20	Brine+Main Steam	23671.20
30-Sep-14	18032.77	4325.50	18840.00	23165.50	Brine+Main Steam	23165.50
1-Oct-14	18004.21	4242.91	18840.00	23082.91	Brine+Main Steam	23082.91
2-Oct-14	18029.92	4460.09	18850.00	23310.09	Brine+Main Steam	23310.09
3-Oct-14	18025.93	5344.41	18850.00	24194.41	Brine+Main Steam	24194.41
4-Oct-14	17500.49	4713.19	18350.00	23063.19	Brine+Main Steam	23063.19
5-Oct-14	18161.12	4816.00	18850.00	23666.00	Brine+Main Steam	23666.00
6-Oct-14	18096.54	4645.70	18840.00	23485.70	Brine+Main Steam	23485.70
7-Oct-14	17831.70	4968.61	18850.00	23818.61	Brine+Main Steam	23818.61
8-Oct-14	17876.08	5379.50	18840.00	24219.50	Brine+Main Steam	24219.50
9-Oct-14	17938.44	5177.19	18850.00	24027.19	Brine+Main Steam	24027.19
10-Oct-14	17962.51	4651.41	18840.00	23491.41	Brine+Main Steam	23491.41
11-Oct-14	17998.36	4531.41	18850.00	23381.41	Brine+Main Steam	23381.41
12-Oct-14	18029.92	4564.78	18850.00	23414.78	Brine+Main Steam	23414.78
13-Oct-14	18067.30	4507.50	18840.00	23347.50	Brine+Main Steam	23347.50
14-Oct-14	18049.33	4634.41	18850.00	23484.41	Brine+Main Steam	23484.41
15-Oct-14	18025.19	4549.81	18840.00	23389.81	Brine+Main Steam	23389.81
16-Oct-14	17997.19	4552.41	18850.00	23402.41	Brine+Main Steam	23402.41
17-Oct-14	17981.80	4538.69	18840.00	23378.69	Brine+Main Steam	23378.69
18-Oct-14	18006.82	4541.09	18850.00	23391.09	Brine+Main Steam	23391.09
19-Oct-14	17969.88	4533.81	18850.00	23383.81	Brine+Main Steam	23383.81
20-Oct-14	17981.83	4514.41	18840.00	23354.41	Brine+Main Steam	23354.41
21-Oct-14	17951.75	4441.50	18850.00	23291.50	Brine+Main Steam	23291.50
22-Oct-14	17927.44	2624.19	17540.00	20164.19	Brine+Main Steam	20164.19
23-Oct-14	17940.27	1947.69	16160.00	18107.69	Brine+Main Steam	18107.69
24-Oct-14	17912.39	2108.22	16150.00	18258.22	Brine+Main Steam	18258.22
25-Oct-14	17912.00	1813.69	16150.00	17963.69	Brine+Main Steam	17963.69
26-Oct-14	17895.07	2129.50	16160.00	18289.50	Brine+Main Steam	18289.50
27-Oct-14	17909.69	1997.72	16150.00	18147.72	Brine+Main Steam	18147.72
28-Oct-14	17909.28	1842.28	16150.00	17992.28	Brine+Main Steam	17992.28
29-Oct-14	17861.30	2377.31	18030.00	20407.31	Brine+Main Steam	20407.31
30-Oct-14	17936.19	2376.41	18770.00	21146.41	Brine+Main Steam	21146.41
31-Oct-14	17911.51	2253.28	18790.00	21043.28	Brine+Main Steam	21043.28

Date	M _{so,i,y}	M _{sb,y}	M _{sv,y} Main steam	M _{sb,y} + M _{sv,y} Brine+Main Steam	M _{s,conservative} Wells/Brine+Main Steam	M _s Tons
1-Nov-14	17916.23	2292.09	18750.00	21042.09	Brine+Main Steam	21042.09
2-Nov-14	17910.92	2378.31	18720.00	21098.31	Brine+Main Steam	21098.31
3-Nov-14	17907.95	2388.31	18520.00	20908.31	Brine+Main Steam	20908.31
4-Nov-14	17871.19	2382.78	18590.00	20972.78	Brine+Main Steam	20972.78
5-Nov-14	17860.91	2384.72	18680.00	21064.72	Brine+Main Steam	21064.72
6-Nov-14	17802.88	2346.78	18600.00	20946.78	Brine+Main Steam	20946.78
7-Nov-14	17665.77	4903.50	18640.00	23543.50	Brine+Main Steam	23543.50
8-Nov-14	17632.92	4925.09	18850.00	23775.09	Brine+Main Steam	23775.09
9-Nov-14	17632.34	4747.13	18840.00	23587.13	Brine+Main Steam	23587.13
10-Nov-14	17653.26	4606.00	18850.00	23456.00	Brine+Main Steam	23456.00
11-Nov-14	17634.97	4753.69	18840.00	23593.69	Brine+Main Steam	23593.69
12-Nov-14	17583.14	4810.59	18840.00	23650.59	Brine+Main Steam	23650.59
13-Nov-14	17610.75	4704.00	18850.00	23554.00	Brine+Main Steam	23554.00
14-Nov-14	17598.74	4648.22	18840.00	23488.22	Brine+Main Steam	23488.22
15-Nov-14	17552.60	4772.88	18850.00	23622.88	Brine+Main Steam	23622.88
16-Nov-14	17579.55	4683.41	18840.00	23523.41	Brine+Main Steam	23523.41
17-Nov-14	15488.33	4858.91	18840.00	23698.91	Brine+Main Steam	23698.91
18-Nov-14	16650.62	4809.91	18850.00	23659.91	Brine+Main Steam	23659.91
19-Nov-14	17002.10	4797.28	18840.00	23637.28	Brine+Main Steam	23637.28
20-Nov-14	17029.70	4671.41	18850.00	23521.41	Brine+Main Steam	23521.41
21-Nov-14	17437.97	4569.31	18840.00	23409.31	Brine+Main Steam	23409.31
22-Nov-14	17398.81	4509.78	18850.00	23359.78	Brine+Main Steam	23359.78
23-Nov-14	17410.80	4557.63	18850.00	23407.63	Brine+Main Steam	23407.63
24-Nov-14	17396.32	4532.50	18840.00	23372.50	Brine+Main Steam	23372.50
25-Nov-14	17471.20	4583.00	18850.00	23433.00	Brine+Main Steam	23433.00
26-Nov-14	17500.41	4650.00	18820.00	23470.00	Brine+Main Steam	23470.00
27-Nov-14	17383.82	4849.88	18760.00	23609.88	Brine+Main Steam	23609.88
28-Nov-14	17440.56	4914.22	18840.00	23754.22	Brine+Main Steam	23754.22
29-Nov-14	17432.74	4988.91	18820.00	23808.91	Brine+Main Steam	23808.91
30-Nov-14	17355.08	5003.00	18850.00	23853.00	Brine+Main Steam	23853.00
1-Dec-14	17386.91	5428.59	18850.00	24278.59	Brine+Main Steam	24278.59
2-Dec-14	17366.04	4992.41	18840.00	23832.41	Brine+Main Steam	23832.41
3-Dec-14	17375.15	4933.38	18850.00	23783.38	Brine+Main Steam	23783.38
4-Dec-14	17358.01	5055.91	17750.00	22805.91	Brine+Main Steam	22805.91
5-Dec-14	15994.45	4906.72	15110.00	20016.72	Brine+Main Steam	20016.72
6-Dec-14	17337.33	4667.28	18790.00	23457.28	Brine+Main Steam	23457.28
7-Dec-14	15947.33	4919.72	18660.00	23579.72	Brine+Main Steam	23579.72
8-Dec-14	17368.29	4865.09	18740.00	23605.09	Brine+Main Steam	23605.09
9-Dec-14	17149.73	4910.00	18770.00	23680.00	Brine+Main Steam	23680.00
10-Dec-14	17330.36	4939.78	18830.00	23769.78	Brine+Main Steam	23769.78
11-Dec-14	17322.44	4620.81	18840.00	23460.81	Brine+Main Steam	23460.81
12-Dec-14	17293.44	4848.41	18840.00	23688.41	Brine+Main Steam	23688.41
13-Dec-14	17295.38	4812.41	18850.00	23662.41	Brine+Main Steam	23662.41
14-Dec-14	17258.87	4822.81	18840.00	23662.81	Brine+Main Steam	23662.81
15-Dec-14	17215.05	4935.75	18840.00	23775.75	Brine+Main Steam	23775.75
16-Dec-14	17186.12	4796.25	18840.00	23636.25	Brine+Main Steam	23636.25

Date	M _{so,i,y}	M _{sb,y}	M _{sv,y} Main steam	Msb,y + Msv,y Brine+Main Steam	M _{s,conservative} Wells/Brine+Main Steam	M _s Tons
17-Dec-14	17161.49	4753.25	18850.00	23603.25	Brine+Main Steam	23603.25
18-Dec-14	17134.10	4738.00	18840.00	23578.00	Brine+Main Steam	23578.00
19-Dec-14	17124.75	4702.94	18850.00	23552.94	Brine+Main Steam	23552.94
20-Dec-14	17056.64	4723.81	18850.00	23573.81	Brine+Main Steam	23573.81
21-Dec-14	17008.07	4729.50	18840.00	23569.50	Brine+Main Steam	23569.50
22-Dec-14	16981.16	4871.50	18850.00	23721.50	Brine+Main Steam	23721.50
23-Dec-14	17040.71	4854.75	18840.00	23694.75	Brine+Main Steam	23694.75
24-Dec-14	15678.94	4875.31	18750.00	23625.31	Brine+Main Steam	23625.31
25-Dec-14	15640.11	4774.50	18750.00	23524.50	Brine+Main Steam	23524.50
26-Dec-14	15628.52	4769.94	18350.00	23119.94	Brine+Main Steam	23119.94
27-Dec-14	15607.65	4805.25	18440.00	23245.25	Brine+Main Steam	23245.25
28-Dec-14	15591.10	4805.63	18480.00	23285.63	Brine+Main Steam	23285.63
29-Dec-14	15586.75	4671.81	18100.00	22771.81	Brine+Main Steam	22771.81
30-Dec-14	15555.34	4793.06	17450.00	22243.06	Brine+Main Steam	22243.06
31-Dec-14	17223.34	4846.00	16160.00	21006.00	Brine+Main Steam	21006.00

Annex 4

Monitoring Equipment

Legends

	means historical calibration by Internal Lab
	means historical calibration by External Lab
	means future calibration to be conducted
	means equipment replaced/installed

Parameter	Measurement Device	Tag Number	Brand (serial number)	Calib. Report XI		Calib. Report XII		Calib. Report XIII		Calib. Report XIV		Calib. Report XV		Remarks
				Calib. Date	Valid until	Calib. Date	Valid until	Calib. Date	Valid until	Calib. Date	Valid until	Calib. Date	Validity	
Msv.y (Ms.y in section D.2)	Multi Variable Transmitter	A2-FIT-0106	Yokogawa (S/N 91L410293)	10/12/2012	10/06/2013	10/06/2013	10/12/2013	09/12/2013	09/06/2014	19/06/2014	19/12/2014	05/12/2014	05/06/2015	Steam flow to WW-2 turbine
Mso.y (Ms.y in section D.2)	Differential Pressure Transmitter - Orifice Plate	FIT-2301	Rosemount (S/N 01830354)	05/12/2012	05/06/2013	05/06/2013	05/12/2013	04/12/2013	04/06/2014	11/06/2014	11/12/2014	05/12/2014	05/06/2015	MBB-1 Well steam flow
	Pressure Transmitter - Orifice Plate	PIT-2302	Rosemount (S/N 01830135)	05/12/2012	05/06/2013	05/06/2013	05/12/2013	28/11/2013	28/05/2014	05/06/2014	05/12/2014	05/12/2014	05/06/2015	
Mso.y (Ms.y in section D.2)	Differential Pressure Transmitter - Orifice Plate	FIT-2501	Rosemount (S/N 01830374)	02/12/2012	02/06/2013	31/05/2013	02/12/2013	29/11/2013	29/05/2014	05/06/2014	05/12/2014	03/12/2014	03/06/2015	MBA-1 Well steam flow
	Pressure Transmitter - Orifice Plate	PIT-2502	Rosemount (S/N 01830130)	02/12/2012	02/06/2013	28/05/2013	01/12/2013	27/11/2013	27/05/2014	03/06/2014	03/12/2014	03/12/2014	03/06/2015	
Mso.y (Ms.y in section D.2)	Differential Pressure Transmitter - Orifice Plate	FIT-2502	Rosemount (S/N 02065517)	02/12/2012	02/06/2013	03/06/2013	03/12/2013	02/12/2013	02/06/2014	09/06/2014	09/12/2014	02/12/2014	02/06/2015	MBA-2 Well steam flow
	Pressure Transmitter - Orifice Plate	PIT-2504	Rosemount (S/N 01830131)	02/12/2012	02/06/2013	28/05/2013	28/11/2013	27/11/2013	27/05/2014	03/06/2014	03/12/2014	02/12/2014	02/06/2015	

[illegible]

Msb,y (Ms,y in section D.2)	Differential Pressure Transmitter	FIT-980	Bailey PTHDDD (S/N 8G199082)		10/03/2013	08/12/2013	07/12/2013	07/06/2014	12/06/2014	12/12/2014	04/12/2014	04/06/2015	WWF-3 Brine Injection Well
	Pressure Transmitter	PIT-799	Yokogawa, EJX530A (S/N 91M523084)		10/03/2013	08/12/2013	07/12/2013	07/06/2014	16/06/2014	16/12/2014	04/12/2014	04/06/2015	
FC _{diesel,EDG} (FCi,j,y in section D.2)	Flow Totalizer	AO-FQ-2033	Fill Rite 900 Series (Y0194)	25/01/2012	25/01/2013								Emergency diesel generator
		AO-FQ-2033	Tokico FGGB835-BDL-04-X (S/N LL 60223)				New meter installed and calibrated on 12/09/2013	12/09/2014	10/09/2014	10/09/2015			
FC _{diesel,fire pump} (FCi,j,y in section D.2)	Flow Totalizer	AO-FQ-2032	Fill Rite 800 Series (4905C)	25/01/2012	25/01/2013								Fire pump
		AO-FQ-2032	Tokico FGGB835-BDL-04-X (S/N LL 60217)				New meter installed and calibrated on 12/09/2013	12/09/2014	10/09/2014	10/09/2015			
EG _y (Unit-1)	Unit-1, "Meter Utama" kWh meter reading (main meter owned by PLN)	-	Schneider ION8600 (MT-0809A063-01)	10/10/2008	10/10/2013	10/10/2013	10/10/2018						WW-1 electricity meter

	Unit-1, "Meter Pembanding" kWh meter reading (check meter owned by SEG)	-	ION 8600 (PT-0807A249-01)	17/12/2012	17/12/2014	02/12/2014	02/12/2016							
EG _y (Unit-2)	Unit-2, "Meter Utama" kWh meter reading (main meter owned by PLN)	-	Schneider ION8600 (MT-0806A388 - 01)	10/10/2008	10/10/2013	10/10/2013	10/10/2018							WW-2 electricity meter
	Unit-2, "Meter Pembanding" kWh meter reading (check meter owned by SEG)	-	ION 8600 (PT-0802A194-01)	17/12/2012	17/12/2014	02/12/2014	02/12/2016							

Annex 5

Daily generation data from Wayang Windu Phase 1 and Wayang Windu Phase 2 geothermal power project (EG), Daily generation data from Wayang Windu Phase 1 (EG_{existing}), Quantity of steam produced (M_s), and Project emissions from steam produced (PES) during Monitoring Period.

Date	EG _y	EG _{unit 2}	EG _{Existing}	M _s	PES
	MWh	MWh	MWh	Tons	tCO ₂
1-Jan-13	5,381.13	2,703.19	2,677.94	21,315.31	233.58
2-Jan-13	5,387.81	2,705.63	2,682.19	21,296.09	233.36
3-Jan-13	5,384.81	2,704.31	2,680.50	21,255.30	232.92
4-Jan-13	5,382.69	2,709.56	2,673.13	21,484.91	235.43
5-Jan-13	5,371.50	2,712.75	2,658.75	21,209.30	232.41
6-Jan-13	5,360.88	2,707.56	2,653.31	21,521.00	235.83
7-Jan-13	5,385.56	2,708.63	2,676.94	21,251.00	232.87
8-Jan-13	5,376.13	2,700.56	2,675.56	21,476.70	235.34
9-Jan-13	5,367.50	2,697.00	2,670.50	21,447.80	235.03
10-Jan-13	5,387.44	2,707.50	2,679.94	21,350.30	233.96
11-Jan-13	5,386.81	2,709.63	2,677.19	21,183.11	232.13
12-Jan-13	5,388.63	2,711.13	2,677.50	21,390.39	234.40
13-Jan-13	5,397.75	2,715.25	2,682.50	21,290.11	233.30
14-Jan-13	5,381.81	2,705.00	2,676.81	21,178.00	232.07
15-Jan-13	5,375.88	2,693.81	2,682.06	21,414.89	234.67
16-Jan-13	5,366.81	2,687.00	2,679.81	21,259.20	232.96
17-Jan-13	5,384.44	2,705.13	2,679.31	21,203.19	232.35
18-Jan-13	5,395.81	2,711.81	2,684.00	21,327.41	233.71
19-Jan-13	5,392.88	2,710.69	2,682.19	21,291.72	233.32
20-Jan-13	5,395.94	2,711.56	2,684.38	21,109.88	231.32
21-Jan-13	5,404.50	2,717.00	2,687.50	21,316.41	233.59
22-Jan-13	5,397.38	2,716.63	2,680.75	21,260.09	232.97
23-Jan-13	5,396.13	2,709.38	2,686.75	21,475.63	235.33
24-Jan-13	5,401.13	2,719.50	2,681.63	21,252.09	232.88
25-Jan-13	5,404.56	2,721.25	2,683.31	21,224.78	232.58
26-Jan-13	5,397.50	2,717.50	2,680.00	21,261.91	232.99
27-Jan-13	5,401.69	2,716.88	2,684.81	21,352.81	233.99
28-Jan-13	5,392.13	2,715.13	2,677.00	21,231.50	232.66
29-Jan-13	5,402.25	2,718.25	2,684.00	21,451.50	235.07
30-Jan-13	5,394.00	2,708.75	2,685.25	20,500.00	224.64
31-Jan-13	5,416.75	2,725.50	2,691.25	20,480.00	224.42
1-Feb-13	5,380.63	2,705.75	2,674.88	22,532.19	246.91
2-Feb-13	5,352.69	2,679.81	2,672.88	21,331.72	233.76
3-Feb-13	5,296.94	2,667.50	2,629.44	20,591.09	225.64
4-Feb-13	5,355.25	2,717.19	2,638.06	20,655.50	226.35
5-Feb-13	5,321.75	2,707.50	2,614.25	20,382.78	223.36
6-Feb-13	5,300.25	2,708.75	2,591.50	20,529.81	224.97
7-Feb-13	5,330.25	2,716.25	2,614.00	20,502.41	224.67
8-Feb-13	5,369.50	2,713.50	2,656.00	20,374.50	223.27
9-Feb-13	5,406.31	2,721.44	2,684.88	20,477.50	224.39
10-Feb-13	5,391.13	2,713.81	2,677.31	20,481.19	224.43

Date	EG _y	EG _{unit 2}	EG _{Existing}	M _s	PES
	MWh	MWh	MWh	Tons	tCO ₂
11-Feb-13	5,392.31	2,712.25	2,680.06	20,502.31	224.67
12-Feb-13	5,387.38	2,707.63	2,679.75	20,582.41	225.54
13-Feb-13	5,394.00	2,707.00	2,687.00	20,672.19	226.53
14-Feb-13	5,402.31	2,713.81	2,688.50	20,665.50	226.45
15-Feb-13	5,393.19	2,708.31	2,684.88	20,746.81	227.35
16-Feb-13	5,390.81	2,706.19	2,684.63	20,564.78	225.35
17-Feb-13	5,383.69	2,709.00	2,674.69	20,623.31	225.99
18-Feb-13	5,358.81	2,705.31	2,653.50	20,526.28	224.93
19-Feb-13	5,388.44	2,713.38	2,675.06	20,615.81	225.91
20-Feb-13	5,393.13	2,707.19	2,685.94	20,593.09	225.66
21-Feb-13	5,364.19	2,708.19	2,656.00	20,594.72	225.68
22-Feb-13	5,348.25	2,702.75	2,645.50	20,714.38	226.99
23-Feb-13	5,321.25	2,697.75	2,623.50	20,661.00	226.41
24-Feb-13	5,360.44	2,705.94	2,654.50	20,651.91	226.31
25-Feb-13	5,359.44	2,701.88	2,657.56	20,587.50	225.60
26-Feb-13	5,359.69	2,699.94	2,659.75	20,290.22	222.34
27-Feb-13	4,893.63	2,263.56	2,630.06	17,723.69	194.22
28-Feb-13	4,537.31	1,851.13	2,686.19	15,292.00	115.21
1-Mar-13	5,355.31	2,709.06	2,646.25	20,465.91	224.27
2-Mar-13	5,324.94	2,709.25	2,615.69	20,459.31	224.20
3-Mar-13	5,320.13	2,700.75	2,619.38	20,459.28	224.19
4-Mar-13	5,314.94	2,701.63	2,613.31	20,437.91	223.96
5-Mar-13	5,345.13	2,721.81	2,623.31	20,462.69	224.23
6-Mar-13	5,316.18	2,706.68	2,609.50	20,429.81	223.87
7-Mar-13	5,302.19	2,700.88	2,601.31	20,454.91	224.15
8-Mar-13	5,355.89	2,711.52	2,644.38	20,429.41	223.87
9-Mar-13	5,356.78	2,712.46	2,644.31	20,406.59	223.62
10-Mar-13	5,297.45	2,717.26	2,580.19	20,405.59	223.61
11-Mar-13	5,365.52	2,712.65	2,652.88	20,399.31	223.54
12-Mar-13	5,361.89	2,716.27	2,645.63	20,400.28	223.55
13-Mar-13	5,365.99	2,711.18	2,654.81	20,388.22	223.42
14-Mar-13	5,400.42	2,719.42	2,681.00	20,381.28	223.34
15-Mar-13	5,395.89	2,719.33	2,676.56	20,367.50	223.19
16-Mar-13	5,387.58	2,716.64	2,670.94	20,384.41	223.37
17-Mar-13	5,388.67	2,716.67	2,672.00	20,403.81	223.59
18-Mar-13	5,386.62	2,712.62	2,674.00	21,281.28	233.20
19-Mar-13	5,389.88	2,715.07	2,674.81	20,920.22	229.25
20-Mar-13	5,395.62	2,710.37	2,685.25	21,494.19	235.54
21-Mar-13	5,389.91	2,714.47	2,675.44	21,993.69	241.01
22-Mar-13	5,376.81	2,706.81	2,670.00	22,904.13	250.99
23-Mar-13	5,397.58	2,716.27	2,681.31	21,844.59	239.38
24-Mar-13	5,376.39	2,707.14	2,669.25	21,697.41	237.76
25-Mar-13	5,377.89	2,709.89	2,668.00	21,385.69	234.35
26-Mar-13	5,357.93	2,705.43	2,652.50	21,509.81	235.71
27-Mar-13	5,387.48	2,713.23	2,674.25	21,567.69	236.34
28-Mar-13	5,364.57	2,695.26	2,669.31	21,420.00	234.72

Date	EG _y	EG _{unit 2}	EG _{Existing}	M _s	PES
	MWh	MWh	MWh	Tons	tCO ₂
29-Mar-13	5,363.14	2,693.95	2,669.19	21,418.41	234.71
30-Mar-13	5,382.19	2,711.56	2,670.63	21,463.69	235.20
31-Mar-13	5,385.41	2,712.23	2,673.19	21,505.41	235.66
1-Apr-13	5,371.88	2,705.26	2,666.63	21,353.00	233.99
2-Apr-13	5,359.20	2,695.64	2,663.56	21,293.69	233.34
3-Apr-13	5,348.23	2,676.11	2,672.13	21,421.91	234.74
4-Apr-13	5,363.64	2,694.08	2,669.56	21,352.00	233.98
5-Apr-13	5,367.28	2,702.78	2,664.50	21,326.72	233.70
6-Apr-13	5,372.30	2,703.49	2,668.81	21,422.69	234.75
7-Apr-13	5,384.82	2,708.32	2,676.50	21,492.69	235.52
8-Apr-13	5,355.71	2,694.40	2,661.31	21,415.72	234.68
9-Apr-13	5,285.95	2,676.58	2,609.38	21,176.69	232.06
10-Apr-13	5,362.66	2,697.53	2,665.13	21,247.31	232.83
11-Apr-13	5,255.52	2,636.70	2,618.81	21,501.78	235.62
12-Apr-13	5,355.20	2,684.64	2,670.56	21,462.63	235.19
13-Apr-13	5,359.10	2,693.60	2,665.50	21,371.78	234.19
14-Apr-13	5,362.20	2,698.20	2,664.00	21,348.91	233.94
15-Apr-13	5,371.44	2,700.00	2,671.44	21,325.19	233.68
16-Apr-13	5,370.09	2,699.40	2,670.69	21,190.41	232.21
17-Apr-13	5,356.62	2,688.80	2,667.81	21,288.72	233.28
18-Apr-13	5,388.41	2,706.10	2,682.31	21,494.88	235.54
19-Apr-13	5,386.30	2,707.30	2,679.00	21,446.91	235.02
20-Apr-13	5,311.98	2,700.30	2,611.69	21,348.00	233.93
21-Apr-13	5,318.27	2,698.70	2,619.56	21,446.00	235.01
22-Apr-13	5,364.05	2,697.30	2,666.75	21,356.00	234.02
23-Apr-13	5,336.95	2,692.20	2,644.75	21,455.00	235.11
24-Apr-13	5,348.42	2,692.80	2,655.63	21,432.22	234.86
25-Apr-13	5,319.42	2,688.30	2,631.13	21,455.88	235.12
26-Apr-13	5,361.19	2,699.50	2,661.69	21,432.72	234.86
27-Apr-13	5,377.77	2,701.70	2,676.06	21,383.50	234.32
28-Apr-13	5,382.72	2,707.41	2,675.31	21,308.09	233.50
29-Apr-13	5,348.52	2,700.20	2,648.31	21,169.09	231.97
30-Apr-13	5,217.88	2,705.19	2,512.69	20,988.91	230.00
1-May-13	5,289.21	2,701.31	2,587.90	21,076.00	230.95
2-May-13	5,385.62	2,707.59	2,678.03	21,290.00	233.30
3-May-13	5,375.28	2,703.59	2,671.69	21,267.69	233.05
4-May-13	5,363.15	2,703.31	2,659.84	21,410.22	234.62
5-May-13	5,362.23	2,703.59	2,658.64	21,054.19	230.71
6-May-13	5,342.36	2,696.41	2,645.95	20,573.09	225.44
7-May-13	5,326.59	2,694.80	2,631.79	20,743.81	227.31
8-May-13	5,321.20	2,689.50	2,631.70	20,641.69	226.19
9-May-13	5,301.52	2,690.59	2,610.93	20,752.13	227.40
10-May-13	5,276.83	2,696.70	2,580.13	20,808.38	228.02
11-May-13	5,258.42	2,697.80	2,560.62	20,749.00	227.37
12-May-13	5,314.36	2,697.00	2,617.36	20,729.31	227.15
13-May-13	5,325.30	2,701.50	2,623.80	20,755.09	227.44

Date	EG _y	EG _{unit 2}	EG _{Existing}	M _s	PES
	MWh	MWh	MWh	Tons	tCO ₂
14-May-13	5,274.67	2,700.11	2,574.56	20,680.09	226.61
15-May-13	5,259.79	2,691.50	2,568.29	20,653.91	226.33
16-May-13	5,237.45	2,697.39	2,540.06	20,778.50	227.69
17-May-13	5,247.37	2,700.50	2,546.87	20,715.81	227.01
18-May-13	5,256.26	2,706.61	2,549.65	20,660.91	226.40
19-May-13	5,280.12	2,704.50	2,575.62	20,738.38	227.25
20-May-13	5,196.34	2,695.89	2,500.45	20,274.69	222.17
21-May-13	5,204.31	2,697.11	2,507.20	20,326.89	153.14
22-May-13	5,204.41	2,687.69	2,516.72	20,323.48	153.12
23-May-13	5,204.77	2,703.20	2,501.57	19,714.79	148.53
24-May-13	5,184.20	2,689.00	2,495.20	19,713.77	148.52
25-May-13	5,182.29	2,702.61	2,479.68	19,693.66	148.37
26-May-13	5,158.96	2,701.80	2,457.16	19,638.84	147.96
27-May-13	5,182.57	2,706.50	2,476.07	19,665.12	148.16
28-May-13	5,175.03	2,511.59	2,663.44	20,032.61	150.93
29-May-13	5,154.25	2,479.11	2,675.14	20,052.80	151.08
30-May-13	5,152.24	2,480.39	2,671.85	20,020.22	150.83
31-May-13	5,212.07	2,537.00	2,675.07	20,056.66	151.11
1-Jun-13	5,151.77	2,483.61	2,668.16	19,662.95	148.14
2-Jun-13	5,217.09	2,540.89	2,676.20	19,646.95	148.02
3-Jun-13	5,202.69	2,529.80	2,672.89	18,850.00	206.56
4-Jun-13	5,163.78	2,693.20	2,470.58	18,840.00	206.45
5-Jun-13	5,189.92	2,678.50	2,511.42	19,341.13	145.72
6-Jun-13	5,246.86	2,704.91	2,541.95	20,095.75	220.21
7-Jun-13	5,234.52	2,698.09	2,536.42	19,900.19	218.07
8-Jun-13	5,148.98	2,692.20	2,456.78	19,829.69	217.30
9-Jun-13	5,166.70	2,702.09	2,464.60	19,847.38	217.49
10-Jun-13	5,160.41	2,687.61	2,472.80	17,936.73	135.14
11-Jun-13	5,099.60	2,679.70	2,419.90	19,853.25	217.55
12-Jun-13	5,070.49	2,682.19	2,388.30	19,808.25	217.06
13-Jun-13	5,114.91	2,696.72	2,418.20	19,843.06	217.44
14-Jun-13	5,146.48	2,694.38	2,452.10	19,843.19	217.44
15-Jun-13	5,236.61	2,701.41	2,535.20	19,840.50	217.41
16-Jun-13	5,188.00	2,529.00	2,659.00	19,835.25	217.36
17-Jun-13	5,208.50	2,667.50	2,541.00	19,809.75	217.08
18-Jun-13	5,173.90	2,698.00	2,475.90	19,813.50	217.12
19-Jun-13	5,139.32	2,700.22	2,439.10	19,791.94	216.88
20-Jun-13	5,082.28	2,694.28	2,388.00	19,788.69	216.85
21-Jun-13	5,021.90	2,646.50	2,375.40	19,732.63	216.23
22-Jun-13	5,084.09	2,676.59	2,407.50	19,749.50	216.42
23-Jun-13	5,108.52	2,709.81	2,398.70	19,764.19	216.58
24-Jun-13	5,123.08	2,715.69	2,407.39	19,770.81	216.65
25-Jun-13	5,105.11	2,708.91	2,396.20	19,772.38	216.67
26-Jun-13	5,103.80	2,700.50	2,403.30	19,766.31	216.60
27-Jun-13	5,105.02	2,711.41	2,393.61	19,754.38	216.47
28-Jun-13	5,075.70	2,705.91	2,369.80	19,754.19	216.47

Date	EG _y	EG _{unit 2}	EG _{Existing}	M _s	PES
	MWh	MWh	MWh	Tons	tCO ₂
29-Jun-13	5,172.41	2,710.00	2,462.41	19,729.63	216.20
30-Jun-13	5,155.28	2,708.69	2,446.59	19,727.31	216.17
1-Jul-13	5,137.41	2,704.91	2,432.50	19,745.31	216.37
2-Jul-13	5,130.59	2,708.69	2,421.91	19,741.88	216.33
3-Jul-13	5,185.22	2,699.13	2,486.09	20,899.81	229.02
4-Jul-13	5,179.48	2,634.69	2,544.80	21,162.06	231.90
5-Jul-13	5,205.30	2,615.50	2,589.80	21,014.50	230.28
6-Jul-13	5,221.31	2,620.31	2,601.00	20,520.50	224.87
7-Jul-13	5,208.98	2,612.38	2,596.61	20,934.50	229.40
8-Jul-13	5,182.91	2,605.31	2,577.59	20,560.25	225.30
9-Jul-13	5,173.91	2,601.41	2,572.50	20,580.19	225.52
10-Jul-13	5,171.70	2,593.41	2,578.30	20,784.19	227.76
11-Jul-13	5,166.19	2,596.88	2,569.31	20,800.13	227.93
12-Jul-13	5,124.81	2,574.72	2,550.09	20,734.19	227.21
13-Jul-13	5,093.81	2,557.41	2,536.41	20,656.56	226.36
14-Jul-13	5,115.89	2,711.50	2,404.39	20,592.94	225.66
15-Jul-13	5,055.78	2,553.88	2,501.91	20,474.69	224.36
16-Jul-13	5,031.70	2,530.00	2,501.70	20,485.31	224.48
17-Jul-13	5,038.72	2,526.63	2,512.09	20,478.31	224.40
18-Jul-13	5,051.09	2,534.50	2,516.59	20,520.88	224.87
19-Jul-13	5,068.09	2,545.69	2,522.41	20,477.63	224.40
20-Jul-13	5,047.41	2,544.91	2,502.50	20,452.75	224.12
21-Jul-13	5,118.98	2,572.69	2,546.30	20,465.63	224.26
22-Jul-13	5,099.72	2,562.22	2,537.50	20,441.88	224.00
23-Jul-13	5,067.89	2,547.28	2,520.61	20,460.94	224.21
24-Jul-13	5,072.81	2,539.31	2,533.50	20,443.38	224.02
25-Jul-13	5,070.69	2,548.69	2,522.00	20,490.94	224.54
26-Jul-13	5,077.69	2,549.09	2,528.59	20,465.75	224.27
27-Jul-13	5,063.13	2,539.13	2,524.00	20,395.50	223.50
28-Jul-13	5,080.19	2,551.19	2,529.00	20,364.00	223.15
29-Jul-13	5,072.09	2,545.59	2,526.50	20,338.44	222.87
30-Jul-13	5,078.20	2,554.00	2,524.20	20,320.69	222.68
31-Jul-13	5,074.31	2,541.31	2,533.00	20,249.19	221.89
1-Aug-13	5,066.20	2,542.91	2,523.30	20,307.50	222.53
2-Aug-13	5,055.08	2,538.88	2,516.20	20,345.81	222.95
3-Aug-13	5,061.61	2,536.91	2,524.70	20,310.13	222.56
4-Aug-13	5,066.80	2,542.59	2,524.20	20,271.00	222.13
5-Aug-13	5,049.72	2,536.63	2,513.09	19,990.06	219.05
6-Aug-13	5,075.00	2,551.00	2,524.00	20,304.19	222.50
7-Aug-13	4,831.59	2,426.19	2,405.41	19,452.94	213.17
8-Aug-13	4,757.20	2,396.41	2,360.80	18,926.69	207.40
9-Aug-13	5,106.67	2,559.28	2,547.39	20,305.38	222.51
10-Aug-13	5,098.13	2,553.22	2,544.91	20,306.94	222.53
11-Aug-13	5,102.00	2,561.09	2,540.91	20,296.31	222.41
12-Aug-13	5,115.69	2,570.59	2,545.09	20,274.38	222.17
13-Aug-13	5,107.81	2,566.00	2,541.81	20,280.50	222.24

Date	EG _y	EG _{unit 2}	EG _{Existing}	M _s	PES
	MWh	MWh	MWh	Tons	tCO ₂
14-Aug-13	5,063.91	2,539.91	2,524.00	20,244.81	221.84
15-Aug-13	5,047.97	2,534.88	2,513.09	20,266.56	222.08
16-Aug-13	5,053.53	2,531.63	2,521.91	20,265.63	222.07
17-Aug-13	5,058.38	2,539.50	2,518.88	20,249.31	221.89
18-Aug-13	5,064.50	2,555.09	2,509.41	20,213.81	221.51
19-Aug-13	5,070.00	2,559.41	2,510.59	20,217.25	221.54
20-Aug-13	5,065.69	2,559.28	2,506.41	20,182.31	221.16
21-Aug-13	5,073.50	2,546.91	2,526.59	20,111.69	220.39
22-Aug-13	5,064.09	2,587.09	2,477.00	20,165.50	220.98
23-Aug-13	5,048.13	2,738.22	2,309.91	20,172.81	221.06
24-Aug-13	5,094.41	2,747.59	2,346.81	20,160.63	220.92
25-Aug-13	5,084.09	2,741.41	2,342.69	20,140.81	220.71
26-Aug-13	5,075.69	2,627.19	2,448.50	20,117.75	220.45
27-Aug-13	5,037.63	2,394.91	2,642.72	18,930.65	142.62
28-Aug-13	5,020.91	2,374.91	2,646.00	18,926.53	142.59
29-Aug-13	5,013.59	2,366.09	2,647.50	18,926.65	142.59
30-Aug-13	5,016.28	2,367.69	2,648.59	18,928.64	142.61
31-Aug-13	5,007.31	2,361.41	2,645.91	18,919.17	142.54
1-Sep-13	5,014.69	2,358.91	2,655.78	18,908.29	142.46
2-Sep-13	4,988.31	2,460.91	2,527.41	19,279.50	211.27
3-Sep-13	4,975.97	2,499.88	2,476.09	19,788.63	216.85
4-Sep-13	4,984.63	2,493.13	2,491.50	19,581.13	214.57
5-Sep-13	5,002.50	2,565.78	2,436.72	19,749.56	216.42
6-Sep-13	5,018.22	2,585.72	2,432.50	19,759.44	216.53
7-Sep-13	5,011.47	2,578.19	2,433.28	19,772.06	216.66
8-Sep-13	5,000.72	2,563.81	2,436.91	19,774.63	216.69
9-Sep-13	5,015.00	2,576.59	2,438.41	19,770.50	216.65
10-Sep-13	5,006.19	2,569.41	2,436.78	19,786.06	216.82
11-Sep-13	4,991.81	2,559.69	2,432.13	19,771.13	216.65
12-Sep-13	4,976.78	2,496.91	2,479.88	19,202.13	210.42
13-Sep-13	4,952.91	2,265.28	2,687.63	18,675.14	140.70
14-Sep-13	4,940.91	2,255.41	2,685.50	18,671.61	140.67
15-Sep-13	4,946.09	2,258.91	2,687.19	18,662.86	140.61
16-Sep-13	4,958.91	2,460.09	2,498.81	19,559.69	214.34
17-Sep-13	4,921.59	2,465.91	2,455.69	19,560.81	214.35
18-Sep-13	4,876.31	2,444.81	2,431.50	18,716.30	141.01
19-Sep-13	4,914.56	2,469.88	2,444.69	19,818.31	217.17
20-Sep-13	4,921.72	2,464.91	2,456.81	19,780.75	216.76
21-Sep-13	4,969.91	2,488.72	2,481.19	19,806.13	217.04
22-Sep-13	4,980.41	2,500.69	2,479.72	19,858.19	217.61
23-Sep-13	4,968.50	2,493.31	2,475.19	19,905.44	218.13
24-Sep-13	4,966.78	2,497.38	2,469.41	19,917.75	218.26
25-Sep-13	4,957.50	2,482.50	2,475.00	20,022.75	219.41
26-Sep-13	4,941.84	2,480.94	2,460.91	18,840.00	206.45
27-Sep-13	4,935.44	2,479.75	2,455.69	18,850.00	206.56
28-Sep-13	4,931.81	2,469.00	2,462.81	18,850.00	206.56

Date	EG _y	EG _{unit 2}	EG _{Existing}	M _s	PES
	MWh	MWh	MWh	Tons	tCO ₂
29-Sep-13	4,923.00	2,464.00	2,459.00	18,840.00	206.45
30-Sep-13	4,927.94	2,470.75	2,457.19	18,850.00	206.56
1-Oct-13	4,813.06	2,413.75	2,399.31	18,531.85	139.62
2-Oct-13	4,869.34	2,439.94	2,429.41	18,524.09	139.56
3-Oct-13	4,914.25	2,467.88	2,446.38	20,907.61	229.11
4-Oct-13	4,916.44	2,464.63	2,451.81	20,013.13	219.31
5-Oct-13	4,927.38	2,470.06	2,457.31	21,669.35	237.45
6-Oct-13	4,928.13	2,475.25	2,452.88	20,863.50	228.62
7-Oct-13	4,910.06	2,465.75	2,444.31	20,797.87	227.91
8-Oct-13	4,918.16	2,463.25	2,454.91	20,880.05	228.81
9-Oct-13	4,918.59	2,468.50	2,450.09	20,802.45	227.96
10-Oct-13	4,901.38	2,455.19	2,446.19	20,854.10	228.52
11-Oct-13	4,897.72	2,457.31	2,440.41	20,838.64	228.35
12-Oct-13	4,895.13	2,451.94	2,443.19	20,933.39	229.39
13-Oct-13	4,892.19	2,448.19	2,444.00	20,940.08	229.46
14-Oct-13	4,855.91	2,429.81	2,426.09	20,746.60	227.34
15-Oct-13	4,903.22	2,451.50	2,451.72	20,920.79	229.25
16-Oct-13	4,852.78	2,428.50	2,424.28	20,807.79	228.01
17-Oct-13	4,857.81	2,432.50	2,425.31	20,975.71	229.85
18-Oct-13	4,883.16	2,445.25	2,437.91	20,935.63	229.41
19-Oct-13	4,890.09	2,448.00	2,442.09	20,959.21	229.67
20-Oct-13	4,867.94	2,441.63	2,426.31	20,267.04	222.09
21-Oct-13	5,030.31	2,519.63	2,510.69	20,545.13	225.14
22-Oct-13	5,030.06	2,525.75	2,504.31	21,845.06	239.38
23-Oct-13	5,039.19	2,528.50	2,510.69	21,486.90	235.46
24-Oct-13	5,015.13	2,512.31	2,502.81	21,357.32	234.04
25-Oct-13	5,065.13	2,537.94	2,527.19	21,383.11	234.32
26-Oct-13	5,035.81	2,528.00	2,507.81	21,377.06	234.25
27-Oct-13	5,021.25	2,432.75	2,588.50	20,151.81	220.83
28-Oct-13	4,986.50	2,377.63	2,608.88	19,668.11	215.53
29-Oct-13	5,002.44	2,511.31	2,491.13	21,406.42	234.57
30-Oct-13	4,984.38	2,596.00	2,388.38	21,342.05	233.87
31-Oct-13	4,989.31	2,643.00	2,346.31	21,203.42	232.35
1-Nov-13	5,008.50	2,511.00	2,497.50	21,305.30	233.47
2-Nov-13	5,016.38	2,515.56	2,500.81	21,234.67	232.69
3-Nov-13	4,971.09	2,494.50	2,476.59	21,190.95	232.21
4-Nov-13	4,961.63	2,487.94	2,473.69	21,477.03	235.35
5-Nov-13	4,959.88	2,490.88	2,469.00	21,408.18	234.59
6-Nov-13	4,963.91	2,487.81	2,476.09	21,384.54	234.33
7-Nov-13	4,955.59	2,477.38	2,478.22	21,437.10	234.91
8-Nov-13	4,908.81	2,457.13	2,451.69	21,109.42	231.32
9-Nov-13	4,865.63	2,433.81	2,431.81	20,580.45	225.52
10-Nov-13	4,860.97	2,431.56	2,429.41	20,700.42	226.84
11-Nov-13	4,788.03	2,406.44	2,381.59	19,186.24	210.24
12-Nov-13	4,738.47	2,362.06	2,376.41	18,144.06	136.70
13-Nov-13	3,990.94	2,462.75	1,528.19	18,927.56	207.41

Date	EG _y	EG _{unit 2}	EG _{Existing}	M _s	PES
	MWh	MWh	MWh	Tons	tCO ₂
14-Nov-13	4,575.00	2,582.19	1,992.81	21,040.27	230.56
15-Nov-13	5,247.91	2,690.81	2,557.09	21,676.11	237.53
16-Nov-13	5,191.56	2,705.56	2,486.00	22,212.90	243.41
17-Nov-13	5,180.94	2,712.44	2,468.50	22,041.64	241.53
18-Nov-13	5,136.16	2,711.75	2,424.41	22,033.77	241.45
19-Nov-13	5,066.50	2,704.00	2,362.50	23,257.26	254.86
20-Nov-13	5,011.38	2,699.50	2,311.88	21,822.09	239.13
21-Nov-13	5,023.63	2,671.81	2,351.81	21,782.20	238.69
22-Nov-13	5,011.41	2,661.81	2,349.59	21,722.56	238.04
23-Nov-13	5,001.03	2,661.81	2,339.22	21,728.82	238.11
24-Nov-13	4,976.84	2,665.56	2,311.28	21,729.30	238.11
25-Nov-13	4,955.22	2,660.13	2,295.09	21,759.47	238.44
26-Nov-13	4,967.38	2,631.88	2,335.50	21,730.36	238.12
27-Nov-13	4,967.88	2,630.94	2,336.94	21,659.12	237.34
28-Nov-13	4,956.56	2,635.56	2,321.00	21,646.32	237.20
29-Nov-13	4,976.19	2,635.00	2,341.19	21,602.63	236.72
30-Nov-13	4,968.63	2,632.81	2,335.81	21,553.27	236.18
1-Dec-13	4,983.38	2,633.63	2,349.75	21,389.29	234.39
2-Dec-13	4,977.63	2,624.00	2,353.63	21,603.04	236.73
3-Dec-13	4,979.19	2,643.31	2,335.88	21,466.31	235.23
4-Dec-13	4,974.50	2,632.25	2,342.25	21,364.31	234.11
5-Dec-13	4,874.63	2,451.94	2,422.69	21,214.50	232.47
6-Dec-13	4,850.88	2,523.69	2,327.19	21,366.57	234.14
7-Dec-13	4,852.63	2,503.00	2,349.63	21,203.33	232.35
8-Dec-13	4,848.88	2,494.31	2,354.56	20,256.81	221.98
9-Dec-13	4,842.50	2,222.50	2,620.00	18,267.81	137.63
10-Dec-13	4,685.50	2,253.50	2,432.00	19,357.75	212.12
11-Dec-13	4,943.13	2,302.19	2,640.94	20,135.19	220.64
12-Dec-13	4,934.38	2,315.69	2,618.69	19,508.81	213.78
13-Dec-13	4,901.13	2,261.63	2,639.50	19,334.88	211.87
14-Dec-13	4,938.50	2,296.50	2,642.00	19,275.31	211.22
15-Dec-13	4,956.69	2,289.81	2,666.88	19,126.50	209.59
16-Dec-13	5,100.25	2,433.25	2,667.00	20,654.06	226.33
17-Dec-13	5,107.13	2,440.44	2,666.69	21,130.63	231.55
18-Dec-13	5,091.00	2,414.50	2,676.50	21,130.69	231.55
19-Dec-13	5,059.25	2,385.31	2,673.94	20,567.94	225.39
20-Dec-13	5,047.06	2,361.00	2,686.06	20,222.69	221.60
21-Dec-13	5,069.69	2,388.69	2,681.00	20,742.00	227.29
22-Dec-13	5,080.00	2,398.06	2,681.94	20,732.31	227.19
23-Dec-13	4,961.81	2,286.00	2,675.81	18,828.06	206.32
24-Dec-13	4,997.69	2,315.50	2,682.19	18,527.19	203.02
25-Dec-13	4,990.13	2,307.81	2,682.31	18,248.94	199.97
26-Dec-13	4,932.31	2,290.63	2,641.69	18,508.00	202.81
27-Dec-13	5,062.56	2,368.31	2,694.25	19,396.50	212.55
28-Dec-13	5,119.50	2,422.75	2,696.75	20,463.31	224.24
29-Dec-13	5,088.63	2,402.13	2,686.50	20,347.38	222.97

Date	EG _y	EG _{unit 2}	EG _{Existing}	M _s	PES
	MWh	MWh	MWh	Tons	tCO ₂
30-Dec-13	5,053.63	2,368.88	2,684.75	20,006.31	219.23
31-Dec-13	5,068.75	2,395.75	2,673.00	20,641.50	226.19
1-Jan-14	4,799.25	2,221.56	2,577.69	19,213.69	210.55
2-Jan-14	5,078.69	2,510.63	2,568.06	20,663.00	226.43
3-Jan-14	5,150.94	2,620.50	2,530.44	21,466.00	235.23
4-Jan-14	5,120.81	2,600.31	2,520.50	21,531.00	235.94
5-Jan-14	5,099.19	2,586.69	2,512.50	21,649.00	237.23
6-Jan-14	5,103.00	2,579.56	2,523.44	21,861.00	239.56
7-Jan-14	5,078.75	2,499.50	2,579.25	21,733.00	238.15
8-Jan-14	5,046.19	2,501.94	2,544.25	21,818.00	239.08
9-Jan-14	5,044.88	2,505.38	2,539.50	21,814.00	239.04
10-Jan-14	5,016.38	2,496.19	2,520.19	21,815.00	239.05
11-Jan-14	4,917.00	2,482.94	2,434.06	21,608.00	236.78
12-Jan-14	4,931.06	2,484.06	2,447.00	21,744.00	238.27
13-Jan-14	4,921.25	2,485.94	2,435.31	21,830.00	239.22
14-Jan-14	4,914.88	2,485.69	2,429.19	21,652.00	237.26
15-Jan-14	4,903.13	2,475.50	2,427.63	21,710.00	237.90
16-Jan-14	4,890.38	2,479.88	2,410.50	21,648.00	237.22
17-Jan-14	4,874.31	2,475.44	2,398.88	21,638.00	237.11
18-Jan-14	4,864.50	2,483.50	2,381.00	21,678.00	237.55
19-Jan-14	4,865.75	2,493.31	2,372.44	21,642.00	237.16
20-Jan-14	4,858.06	2,468.56	2,389.50	21,559.00	236.25
21-Jan-14	4,833.81	2,443.13	2,390.69	21,513.00	235.74
22-Jan-14	4,657.38	2,042.19	2,615.19	17,782.00	194.86
23-Jan-14	4,736.94	2,256.81	2,480.13	19,474.00	213.40
24-Jan-14	4,729.81	2,412.31	2,317.50	20,824.00	228.19
25-Jan-14	4,712.75	2,428.69	2,284.06	21,519.00	235.81
26-Jan-14	4,699.00	2,417.69	2,281.31	21,244.00	232.79
27-Jan-14	4,668.69	2,401.38	2,267.31	21,172.00	232.00
28-Jan-14	4,675.25	2,392.94	2,282.31	21,020.00	230.34
29-Jan-14	4,661.38	2,394.06	2,267.31	20,764.00	227.53
30-Jan-14	4,909.63	2,474.44	2,435.19	21,249.00	232.85
31-Jan-14	4,830.38	2,336.81	2,493.56	20,641.00	226.19
1-Feb-14	4,911.19	2,470.25	2,440.94	20,672.00	226.53
2-Feb-14	5,072.56	2,701.00	2,371.56	22,134.00	242.55
3-Feb-14	4,990.69	2,702.25	2,288.44	21,818.00	239.08
4-Feb-14	5,019.06	2,588.56	2,430.50	22,128.00	242.48
5-Feb-14	4,939.81	2,475.63	2,464.19	21,709.00	237.89
6-Feb-14	4,920.88	2,471.50	2,449.38	21,703.00	237.82
7-Feb-14	4,927.25	2,480.00	2,447.25	21,683.00	237.60
8-Feb-14	4,902.25	2,454.56	2,447.69	21,623.00	236.95
9-Feb-14	4,880.94	2,454.94	2,426.00	21,672.00	237.48
10-Feb-14	4,912.88	2,473.31	2,439.56	21,581.00	236.49
11-Feb-14	4,854.50	2,690.00	2,164.50	21,585.00	236.53
12-Feb-14	4,883.69	2,494.75	2,388.94	21,521.00	235.83
13-Feb-14	4,837.44	2,431.75	2,405.69	21,636.00	237.09

Date	EG _y	EG _{unit 2}	EG _{Existing}	M _s	PES
	MWh	MWh	MWh	Tons	tCO ₂
14-Feb-14	4,843.81	2,429.19	2,414.63	21,114.00	231.37
15-Feb-14	4,594.25	2,308.50	2,285.75	18,568.00	203.47
16-Feb-14	4,574.44	2,287.31	2,287.13	18,408.00	201.72
17-Feb-14	4,359.19	2,180.19	2,179.00	18,316.00	200.71
18-Feb-14	4,299.69	2,153.31	2,146.38	18,313.00	200.68
19-Feb-14	4,298.00	2,160.25	2,137.75	18,302.00	200.56
20-Feb-14	4,330.38	2,164.63	2,165.75	18,329.00	200.85
21-Feb-14	4,377.88	2,191.88	2,186.00	18,365.00	201.25
22-Feb-14	4,717.38	2,370.25	2,347.13	20,109.00	220.36
23-Feb-14	4,854.50	2,432.19	2,422.31	20,973.00	229.82
24-Feb-14	4,845.13	2,430.06	2,415.06	20,744.00	227.31
25-Feb-14	4,934.38	2,473.63	2,460.75	21,049.00	230.66
26-Feb-14	4,956.94	2,489.69	2,467.25	21,023.00	230.37
27-Feb-14	4,997.63	2,506.13	2,491.50	21,018.00	230.32
28-Feb-14	4,989.00	2,498.50	2,490.50	21,053.00	230.70
1-Mar-14	5,055.81	2,530.38	2,525.44	20,970.00	229.79
2-Mar-14	5,034.31	2,524.81	2,509.50	21,068.00	230.87
3-Mar-14	5,014.75	2,509.88	2,504.88	21,236.00	232.71
4-Mar-14	4,937.13	2,476.63	2,460.50	20,879.00	228.79
5-Mar-14	4,944.50	2,481.88	2,462.63	20,913.00	229.17
6-Mar-14	4,928.50	2,472.50	2,456.00	20,970.00	229.79
7-Mar-14	4,907.00	2,462.31	2,444.69	20,864.00	228.63
8-Mar-14	4,951.63	2,484.94	2,466.69	21,032.00	230.47
9-Mar-14	4,949.75	2,498.75	2,451.00	21,102.00	231.24
10-Mar-14	4,896.19	2,460.00	2,436.19	20,725.00	227.11
11-Mar-14	4,893.88	2,452.94	2,440.94	20,864.00	228.63
12-Mar-14	4,869.06	2,433.50	2,435.56	20,735.00	227.22
13-Mar-14	4,889.81	2,446.38	2,443.44	20,858.00	228.56
14-Mar-14	4,891.25	2,451.19	2,440.06	20,967.00	229.76
15-Mar-14	4,871.75	2,434.31	2,437.44	20,787.00	227.79
16-Mar-14	5,194.19	2,607.50	2,586.69	24,462.00	268.06
17-Mar-14	5,238.25	2,629.94	2,608.31	20,864.00	228.63
18-Mar-14	5,298.38	2,678.88	2,619.50	26,077.00	285.75
19-Mar-14	5,302.88	2,686.50	2,616.38	25,924.00	284.08
20-Mar-14	5,305.81	2,707.81	2,598.00	25,850.00	283.27
21-Mar-14	5,276.50	2,694.56	2,581.94	25,849.00	283.26
22-Mar-14	5,285.13	2,695.13	2,590.00	25,864.00	283.42
23-Mar-14	5,277.19	2,693.63	2,583.56	25,837.00	283.12
24-Mar-14	5,269.00	2,690.50	2,578.50	25,787.00	282.58
25-Mar-14	5,242.88	2,675.75	2,567.13	25,733.00	281.98
26-Mar-14	5,126.56	2,566.25	2,560.31	25,300.00	277.24
27-Mar-14	5,110.63	2,562.25	2,548.38	25,315.00	277.40
28-Mar-14	5,166.69	2,588.50	2,578.19	25,224.00	276.41
29-Mar-14	5,158.94	2,591.81	2,567.13	25,210.00	276.25
30-Mar-14	5,139.88	2,580.19	2,559.69	25,150.00	275.60
31-Mar-14	5,117.25	2,573.13	2,544.13	25,203.00	276.18

Date	EG _y	EG _{unit 2}	EG _{Existing}	M _s	PES
	MWh	MWh	MWh	Tons	tCO ₂
1-Apr-14	5,157.38	2,592.38	2,565.00	25,146.00	275.55
2-Apr-14	5,114.12	2,567.62	2,546.50	25,262.00	276.82
3-Apr-14	5,165.58	2,606.02	2,559.56	25,201.00	276.16
4-Apr-14	5,160.67	2,591.85	2,568.81	25,226.00	276.43
5-Apr-14	5,160.72	2,602.54	2,558.19	24,732.00	271.02
6-Apr-14	5,199.79	2,624.10	2,575.69	25,331.00	277.58
7-Apr-14	5,190.75	2,612.25	2,578.50	25,399.00	278.32
8-Apr-14	5,148.17	2,590.73	2,557.44	25,377.00	278.08
9-Apr-14	3,388.87	736.68	2,652.19	13,883.00	152.13
10-Apr-14	3,750.96	1,098.33	2,652.63	16,272.00	178.31
11-Apr-14	4,713.67	2,076.67	2,637.00	21,735.00	238.17
12-Apr-14	5,347.54	2,712.67	2,634.88	25,151.00	275.61
13-Apr-14	5,303.75	2,710.75	2,593.00	25,188.00	276.01
14-Apr-14	5,298.83	2,693.89	2,604.94	25,210.00	276.25
15-Apr-14	5,296.04	2,693.67	2,602.38	25,087.00	274.91
16-Apr-14	5,285.25	2,669.63	2,615.63	24,439.00	267.81
17-Apr-14	5,295.56	2,680.56	2,615.00	21,495.00	235.54
18-Apr-14	5,299.00	2,681.44	2,617.56	24,968.00	273.60
19-Apr-14	5,304.62	2,683.81	2,620.81	24,941.00	273.31
20-Apr-14	5,337.49	2,695.05	2,642.44	25,874.00	283.53
21-Apr-14	4,180.62	2,125.43	2,055.19	23,898.00	261.88
22-Apr-14	5,294.38	2,673.38	2,621.00	25,134.00	275.42
23-Apr-14	5,317.20	2,674.33	2,642.88	24,293.00	266.21
24-Apr-14	5,284.56	2,657.25	2,627.31	24,488.00	268.34
25-Apr-14	5,242.25	2,641.38	2,600.88	24,474.00	268.19
26-Apr-14	5,240.24	2,634.30	2,605.94	24,522.00	268.71
27-Apr-14	5,248.87	2,638.18	2,610.69	24,481.00	268.27
28-Apr-14	5,310.77	2,661.64	2,649.13	24,421.00	267.61
29-Apr-14	5,282.58	2,659.02	2,623.56	24,353.00	266.86
30-Apr-14	5,277.80	2,653.67	2,624.13	24,298.00	266.26
1-May-14	5,292.58	2,664.77	2,627.81	23,680.00	259.49
2-May-14	5,281.05	2,660.80	2,620.25	24,053.00	263.58
3-May-14	5,294.45	2,667.45	2,627.00	24,067.00	263.73
4-May-14	5,336.76	2,694.63	2,642.13	24,075.00	263.82
5-May-14	5,234.94	2,684.44	2,550.50	23,888.00	261.77
6-May-14	5,179.09	2,676.91	2,502.19	23,637.00	259.02
7-May-14	5,171.24	2,665.62	2,505.63	23,634.00	258.98
8-May-14	5,292.45	2,683.95	2,608.50	23,842.00	261.26
9-May-14	5,246.13	2,676.44	2,569.69	23,814.00	260.96
10-May-14	5,238.96	2,657.09	2,581.88	23,671.00	259.39
11-May-14	5,236.14	2,666.20	2,569.94	23,629.00	258.93
12-May-14	5,224.36	2,658.80	2,565.56	23,636.00	259.01
13-May-14	5,169.13	2,639.50	2,529.63	23,478.00	257.27
14-May-14	5,198.13	2,613.00	2,585.13	23,476.00	257.25
15-May-14	5,194.75	2,644.00	2,550.75	23,545.00	258.01
16-May-14	5,202.44	2,646.50	2,555.94	23,406.00	256.49

Date	EG _y	EG _{unit 2}	EG _{Existing}	M _s	PES
	MWh	MWh	MWh	Tons	tCO ₂
17-May-14	5,180.77	2,642.20	2,538.56	23,391.00	256.32
18-May-14	5,214.02	2,655.90	2,558.13	23,501.00	257.53
19-May-14	5,174.30	2,631.80	2,542.50	25,047.00	274.47
20-May-14	5,204.80	2,642.80	2,562.00	23,450.00	256.97
21-May-14	5,256.17	2,660.30	2,595.88	23,387.00	256.28
22-May-14	5,232.23	2,654.30	2,577.94	23,505.00	257.57
23-May-14	5,222.41	2,669.91	2,552.50	23,467.00	257.15
24-May-14	5,228.30	2,656.80	2,571.50	23,321.00	255.55
25-May-14	5,194.81	2,640.50	2,554.31	23,332.00	255.67
26-May-14	5,200.48	2,640.80	2,559.69	23,159.00	253.78
27-May-14	5,228.59	2,655.41	2,573.19	23,250.00	254.78
28-May-14	5,216.67	2,646.80	2,569.88	23,210.00	254.34
29-May-14	5,203.00	2,654.50	2,548.50	23,084.00	252.96
30-May-14	5,187.75	2,653.50	2,534.25	23,198.00	254.21
31-May-14	5,212.80	2,654.11	2,558.69	23,118.00	253.33
1-Jun-14	5,215.48	2,654.80	2,560.69	23,121.00	253.36
2-Jun-14	5,183.81	2,638.00	2,545.81	23,008.00	252.12
3-Jun-14	5,169.02	2,636.70	2,532.31	23,165.00	253.84
4-Jun-14	5,186.78	2,633.09	2,553.69	23,053.00	252.62
5-Jun-14	5,149.24	2,642.50	2,506.74	22,946.00	251.44
6-Jun-14	5,172.61	2,642.20	2,530.41	22,986.00	251.88
7-Jun-14	5,175.67	2,638.30	2,537.38	22,962.81	251.63
8-Jun-14	5,185.81	2,650.30	2,535.51	22,998.86	252.02
9-Jun-14	5,197.00	2,651.41	2,545.59	23,289.10	255.20
10-Jun-14	5,145.06	2,626.30	2,518.76	23,067.78	252.78
11-Jun-14	5,174.63	2,635.80	2,538.83	23,010.70	252.15
12-Jun-14	5,174.05	2,640.80	2,533.25	22,888.53	250.81
13-Jun-14	5,155.78	2,633.91	2,521.87	22,933.91	251.31
14-Jun-14	5,286.87	2,684.00	2,602.87	23,306.28	255.39
15-Jun-14	5,331.48	2,697.20	2,634.28	23,309.29	255.43
16-Jun-14	5,303.89	2,689.80	2,614.09	23,132.84	253.49
17-Jun-14	5,290.55	2,692.09	2,598.46	23,130.85	253.47
18-Jun-14	5,212.45	2,671.41	2,541.04	22,882.59	250.75
19-Jun-14	5,259.48	2,667.09	2,592.39	17,857.00	195.68
20-Jun-14	5,250.27	2,660.20	2,590.06	23,077.00	252.88
21-Jun-14	5,240.82	2,660.30	2,580.52	24,046.00	263.50
22-Jun-14	5,275.23	2,664.50	2,610.73	23,674.00	259.42
23-Jun-14	5,229.64	2,661.81	2,567.83	24,161.00	264.76
24-Jun-14	5,223.81	2,663.59	2,560.22	25,288.00	277.11
25-Jun-14	5,216.93	2,653.80	2,563.13	22,679.00	248.52
26-Jun-14	5,225.11	2,660.41	2,564.70	22,845.00	250.34
27-Jun-14	5,226.56	2,663.89	2,562.67	22,934.00	251.31
28-Jun-14	5,231.38	2,667.31	2,564.06	22,979.00	251.81
29-Jun-14	5,192.57	2,648.80	2,543.77	23,001.00	252.05
30-Jun-14	5,191.47	2,661.20	2,530.27	23,002.00	252.06
1-Jul-14	5162.06	2651.89	2510.17	22,992.00	251.95

Date	EG _y	EG _{unit 2}	EG _{Existing}	M _s	PES
	MWh	MWh	MWh	Tons	tCO ₂
2-Jul-14	5166.80	2652.41	2514.40	23,122.00	253.37
3-Jul-14	5221.31	2662.00	2559.31	23,134.00	253.50
4-Jul-14	5214.91	2653.50	2561.41	23,146.00	253.64
5-Jul-14	5197.16	2641.80	2555.36	23,051.01	252.60
6-Jul-14	5209.81	2650.41	2559.41	22,517.82	246.75
7-Jul-14	5228.94	2653.30	2575.64	23,668.56	259.36
8-Jul-14	5204.80	2660.09	2544.70	23,570.63	258.29
9-Jul-14	5191.74	2638.91	2552.84	23,599.08	258.60
10-Jul-14	5180.33	2650.89	2529.44	23,565.13	258.23
11-Jul-14	5184.18	2648.50	2535.68	23,597.48	258.58
12-Jul-14	5146.52	2631.59	2514.93	23,602.36	258.64
13-Jul-14	5144.07	2637.22	2506.85	23,526.72	257.81
14-Jul-14	5154.67	2642.50	2512.17	22,819.05	250.05
15-Jul-14	5149.68	2639.78	2509.90	23,950.80	262.46
16-Jul-14	5143.32	2624.72	2518.60	23,232.36	254.58
17-Jul-14	5154.70	2642.91	2511.80	23,305.04	255.38
18-Jul-14	5131.41	2640.50	2490.91	23,136.19	253.53
19-Jul-14	5147.50	2607.50	2540.00	23,313.26	255.47
20-Jul-14	5125.28	2566.78	2558.50	23,181.09	254.02
21-Jul-14	5145.72	2622.22	2523.50	22,820.59	250.07
22-Jul-14	5187.08	2633.28	2553.80	23,888.53	261.77
23-Jul-14	5203.80	2658.59	2545.20	22,635.77	248.05
24-Jul-14	5165.31	2638.72	2526.59	23,566.90	258.25
25-Jul-14	5190.09	2655.19	2534.91	23,287.79	255.19
26-Jul-14	5172.81	2638.72	2534.09	23,270.30	255.00
27-Jul-14	5174.59	2640.59	2534.00	23,248.02	254.75
28-Jul-14	5186.11	2644.91	2541.20	23,257.13	254.85
29-Jul-14	5188.41	2652.50	2535.91	23,212.50	254.36
30-Jul-14	5198.58	2641.19	2557.39	23,174.40	253.95
31-Jul-14	5221.81	2644.91	2576.91	23,104.50	253.18
1-Aug-14	5204.88	2636.78	2568.09	22,987.50	251.90
2-Aug-14	5137.23	2635.13	2502.11	23,006.00	252.10
3-Aug-14	5144.17	2618.28	2525.89	22,984.20	251.86
4-Aug-14	5097.81	2602.81	2495.00	23,533.20	257.88
5-Aug-14	5116.41	2597.41	2519.00	23,328.30	255.63
6-Aug-14	5105.41	2597.00	2508.41	23,245.89	254.73
7-Aug-14	5144.98	2579.78	2565.20	23,147.20	253.65
8-Aug-14	5119.30	2623.41	2495.89	23,007.50	252.12
9-Aug-14	5111.41	2611.91	2499.50	22,918.11	251.14
10-Aug-14	5115.58	2611.78	2503.80	22,833.69	250.21
11-Aug-14	5177.23	2493.63	2683.61	22,702.00	248.77
12-Aug-14	5210.08	2656.19	2553.89	23,445.20	256.91
13-Aug-14	5226.19	2659.69	2566.50	23,488.91	257.39
14-Aug-14	5215.22	2658.72	2556.50	24,073.09	263.80
15-Aug-14	5226.50	2664.50	2562.00	23,483.76	257.34
16-Aug-14	5224.50	2663.09	2561.41	23,408.11	256.51

Date	EG _y	EG _{unit 2}	EG _{Existing}	M _s	PES
	MWh	MWh	MWh	Tons	tCO ₂
17-Aug-14	5024.59	2541.09	2483.50	23,581.41	258.41
18-Aug-14	5174.22	2619.31	2554.91	23,492.07	257.43
19-Aug-14	5182.19	2635.69	2546.50	23,006.03	252.10
20-Aug-14	5168.28	2631.09	2537.19	23,009.63	252.14
21-Aug-14	5162.83	2617.13	2545.70	23,552.67	258.09
22-Aug-14	5158.08	2615.88	2542.20	23,326.11	255.61
23-Aug-14	5128.63	2604.72	2523.91	23,275.89	255.06
24-Aug-14	5126.17	2611.28	2514.89	23,331.67	255.67
25-Aug-14	5130.02	2616.81	2513.20	23,402.77	256.45
26-Aug-14	5117.02	2613.81	2503.20	23,305.24	255.38
27-Aug-14	5115.19	2603.59	2511.59	23,147.19	253.65
28-Aug-14	5067.91	2578.41	2489.50	23,066.31	252.76
29-Aug-14	5035.61	2570.50	2465.11	22,786.71	249.70
30-Aug-14	5092.89	2605.00	2487.89	23,107.87	253.22
31-Aug-14	5081.61	2597.50	2484.11	23,117.36	253.32
1-Sep-14	5060.39	2578.50	2481.89	23,097.09	253.10
2-Sep-14	5092.00	2586.09	2505.91	23,137.98	253.55
3-Sep-14	5109.89	2592.69	2517.20	23,092.73	253.05
4-Sep-14	5103.31	2633.81	2469.50	23,341.80	255.78
5-Sep-14	5028.19	2732.50	2295.69	23,295.80	255.28
6-Sep-14	5016.80	2727.09	2289.70	23,336.90	255.73
7-Sep-14	5010.98	2730.69	2280.30	23,327.30	255.62
8-Sep-14	4912.13	2485.31	2426.81	22,667.50	248.39
9-Sep-14	4819.91	2408.81	2411.09	22,768.00	249.49
10-Sep-14	4813.38	2412.88	2400.50	22,916.70	251.12
11-Sep-14	4767.72	2407.13	2360.59	22,705.60	248.81
12-Sep-14	4773.59	2400.78	2372.81	22,220.89	243.50
13-Sep-14	5051.19	2450.09	2601.09	23,530.50	257.85
14-Sep-14	5100.41	2471.31	2629.09	23,399.00	256.41
15-Sep-14	5124.59	2491.19	2633.41	23,276.81	255.07
16-Sep-14	5042.63	2469.72	2572.91	23,066.50	252.77
17-Sep-14	4869.88	2429.28	2440.59	23,188.09	254.10
18-Sep-14	4859.50	2439.41	2420.09	23,140.91	253.58
19-Sep-14	4836.31	2427.81	2408.50	23,084.50	252.96
20-Sep-14	4844.50	2428.69	2415.81	23,137.80	253.55
21-Sep-14	4873.22	2431.81	2441.41	23,077.59	252.89
22-Sep-14	4775.00	2406.91	2368.09	22,559.41	247.21
23-Sep-14	4858.66	2407.88	2450.78	23,070.80	252.81
24-Sep-14	5175.94	2541.22	2634.72	23,236.41	254.63
25-Sep-14	5234.47	2547.78	2686.69	23,294.89	255.27
26-Sep-14	5215.22	2518.81	2696.41	23,036.41	252.44
27-Sep-14	5240.09	2539.91	2700.19	23,153.39	253.72
28-Sep-14	5201.81	2525.59	2676.22	23,112.70	253.27
29-Sep-14	5211.38	2612.09	2599.28	23,671.20	259.39
30-Sep-14	5150.63	2580.81	2569.81	23,165.50	253.85
1-Oct-14	5193.41	2674.50	2518.91	23,082.91	252.94

Date	EG _y	EG _{unit 2}	EG _{Existing}	M _s	PES
	MWh	MWh	MWh	Tons	tCO ₂
2-Oct-14	5173.91	2682.41	2491.50	23,310.09	255.43
3-Oct-14	5221.09	2682.19	2538.91	24,194.41	265.12
4-Oct-14	5062.22	2587.72	2474.50	23,063.19	252.73
5-Oct-14	5234.69	2665.19	2569.50	23,666.00	259.33
6-Oct-14	5208.28	2659.69	2548.59	23,485.70	257.36
7-Oct-14	5238.13	2663.13	2575.00	23,818.61	261.01
8-Oct-14	5353.16	2694.88	2658.28	24,219.50	265.40
9-Oct-14	5365.84	2707.13	2658.72	24,027.19	263.29
10-Oct-14	5345.06	2693.28	2651.78	23,491.41	257.42
11-Oct-14	5250.63	2648.31	2602.31	23,381.41	256.22
12-Oct-14	5216.81	2643.50	2573.31	23,414.78	256.58
13-Oct-14	5207.47	2655.69	2551.78	23,347.50	255.84
14-Oct-14	5191.13	2649.72	2541.41	23,484.41	257.34
15-Oct-14	5165.97	2618.88	2547.09	23,389.81	256.31
16-Oct-14	5160.09	2619.00	2541.09	23,402.41	256.45
17-Oct-14	5147.94	2607.13	2540.81	23,378.69	256.19
18-Oct-14	5148.28	2603.28	2545.00	23,391.09	256.32
19-Oct-14	5122.53	2606.22	2516.31	23,383.81	256.24
20-Oct-14	5129.75	2621.06	2508.69	23,354.41	255.92
21-Oct-14	5111.81	2608.50	2503.31	23,291.50	255.23
22-Oct-14	4698.53	2381.25	2317.28	20,164.19	220.96
23-Oct-14	4328.41	2170.69	2157.72	18,107.69	198.43
24-Oct-14	4331.16	2168.88	2162.28	18,258.22	200.08
25-Oct-14	4309.22	2164.63	2144.59	17,963.69	196.85
26-Oct-14	4327.50	2165.69	2161.81	18,289.50	200.42
27-Oct-14	4334.31	2157.50	2176.81	18,147.72	198.86
28-Oct-14	4326.59	2149.31	2177.28	17,992.28	197.16
29-Oct-14	4759.78	2414.56	2345.22	20,407.31	223.63
30-Oct-14	4984.78	2547.00	2437.78	21,146.41	231.72
31-Oct-14	4956.66	2504.94	2451.72	21,043.28	230.59
1-Nov-14	4920.88	2467.00	2453.88	21,042.09	230.58
2-Nov-14	4908.53	2444.81	2463.72	21,098.31	231.20
3-Nov-14	4921.34	2459.25	2462.09	20,908.31	229.12
4-Nov-14	4903.03	2503.94	2399.09	20,972.78	229.82
5-Nov-14	4891.59	2474.38	2417.22	21,064.72	230.83
6-Nov-14	4836.72	2472.94	2363.78	20,946.78	229.54
7-Nov-14	5105.69	2591.69	2514.00	23,543.50	257.99
8-Nov-14	5185.41	2638.00	2547.41	23,775.09	260.53
9-Nov-14	5178.00	2654.50	2523.50	23,587.13	258.47
10-Nov-14	5151.28	2625.69	2525.59	23,456.00	257.03
11-Nov-14	5191.53	2645.13	2546.41	23,593.69	258.54
12-Nov-14	5266.06	2655.88	2610.19	23,650.59	259.17
13-Nov-14	5236.25	2638.63	2597.63	23,554.00	258.11
14-Nov-14	5225.59	2641.50	2584.09	23,488.22	257.39
15-Nov-14	5194.56	2627.06	2567.50	23,622.88	258.86
16-Nov-14	5214.13	2633.94	2580.19	23,523.41	257.77

Date	EG _y	EG _{unit 2}	EG _{Existing}	M _s	PES
	MWh	MWh	MWh	Tons	tCO ₂
17-Nov-14	5,173.91	2,621.00	2,552.91	23,698.91	259.70
18-Nov-14	5,185.81	2,623.50	2,562.31	23,659.91	259.27
19-Nov-14	5,162.28	2,632.19	2,530.09	23,637.28	259.02
20-Nov-14	5,122.84	2,604.56	2,518.28	23,521.41	257.75
21-Nov-14	5,088.16	2,596.25	2,491.91	23,409.31	256.52
22-Nov-14	5,031.06	2,617.06	2,414.00	23,359.78	255.98
23-Nov-14	5,031.03	2,618.31	2,412.72	23,407.63	256.50
24-Nov-14	5,060.09	2,606.00	2,454.09	23,372.50	256.12
25-Nov-14	5,086.06	2,601.88	2,484.19	23,433.00	256.78
26-Nov-14	5,102.91	2,589.50	2,513.41	23,470.00	257.19
27-Nov-14	5,069.25	2,549.75	2,519.50	23,609.88	258.72
28-Nov-14	5,107.41	2,577.00	2,530.41	23,754.22	260.30
29-Nov-14	5,049.91	2,555.50	2,494.41	23,808.91	260.90
30-Nov-14	5,156.66	2,612.06	2,544.59	23,853.00	261.38
1-Dec-14	5,149.63	2,604.13	2,545.50	24,278.59	266.05
2-Dec-14	5,180.61	2,653.98	2,526.63	23,832.41	261.16
3-Dec-14	5,125.81	2,583.94	2,541.88	23,783.38	260.62
4-Dec-14	5,158.22	2,594.00	2,564.22	22,805.91	249.91
5-Dec-14	4,902.22	2,448.31	2,453.91	20,016.72	219.35
6-Dec-14	5,058.38	2,550.00	2,508.38	23,457.28	257.05
7-Dec-14	4,873.56	2,441.06	2,432.50	23,579.72	258.39
8-Dec-14	5,018.34	2,547.44	2,470.91	23,605.09	258.67
9-Dec-14	4,973.16	2,519.75	2,453.41	23,680.00	259.49
10-Dec-14	5,045.44	2,549.94	2,495.50	23,769.78	260.47
11-Dec-14	5,001.72	2,564.81	2,436.91	23,460.81	257.09
12-Dec-14	5,070.53	2,589.75	2,480.78	23,688.41	259.58
13-Dec-14	5,088.81	2,583.50	2,505.31	23,662.41	259.30
14-Dec-14	5,059.41	2,555.50	2,503.91	23,662.81	259.30
15-Dec-14	5,041.63	2,552.44	2,489.19	23,775.75	260.54
16-Dec-14	5,070.59	2,572.00	2,498.59	23,636.25	259.01
17-Dec-14	5,121.63	2,583.31	2,538.31	23,603.25	258.65
18-Dec-14	5,104.19	2,568.88	2,535.31	23,578.00	258.37
19-Dec-14	5,082.28	2,573.00	2,509.28	23,552.94	258.10
20-Dec-14	5,065.72	2,578.13	2,487.59	23,573.81	258.32
21-Dec-14	5,037.78	2,550.06	2,487.72	23,569.50	258.28
22-Dec-14	5,027.53	2,552.44	2,475.09	23,721.50	259.94
23-Dec-14	5,032.50	2,552.19	2,480.31	23,694.75	259.65
24-Dec-14	4,852.38	2,435.19	2,417.19	23,625.31	258.89
25-Dec-14	4,847.00	2,426.69	2,420.31	23,524.50	257.78
26-Dec-14	4,834.31	2,420.63	2,413.69	23,119.94	253.35
27-Dec-14	4,812.56	2,406.56	2,406.00	23,245.25	254.72
28-Dec-14	4,822.16	2,414.25	2,407.91	23,285.63	255.17
29-Dec-14	4,806.59	2,396.31	2,410.28	22,771.81	249.54
30-Dec-14	4,777.03	2,387.31	2,389.72	22,243.06	243.74
31-Dec-14	4,684.16	2,339.69	2,344.47	21,006.00	230.19

Annex 6

Check meter and Main meter measurement

Main Meter and Check Meter Measurement

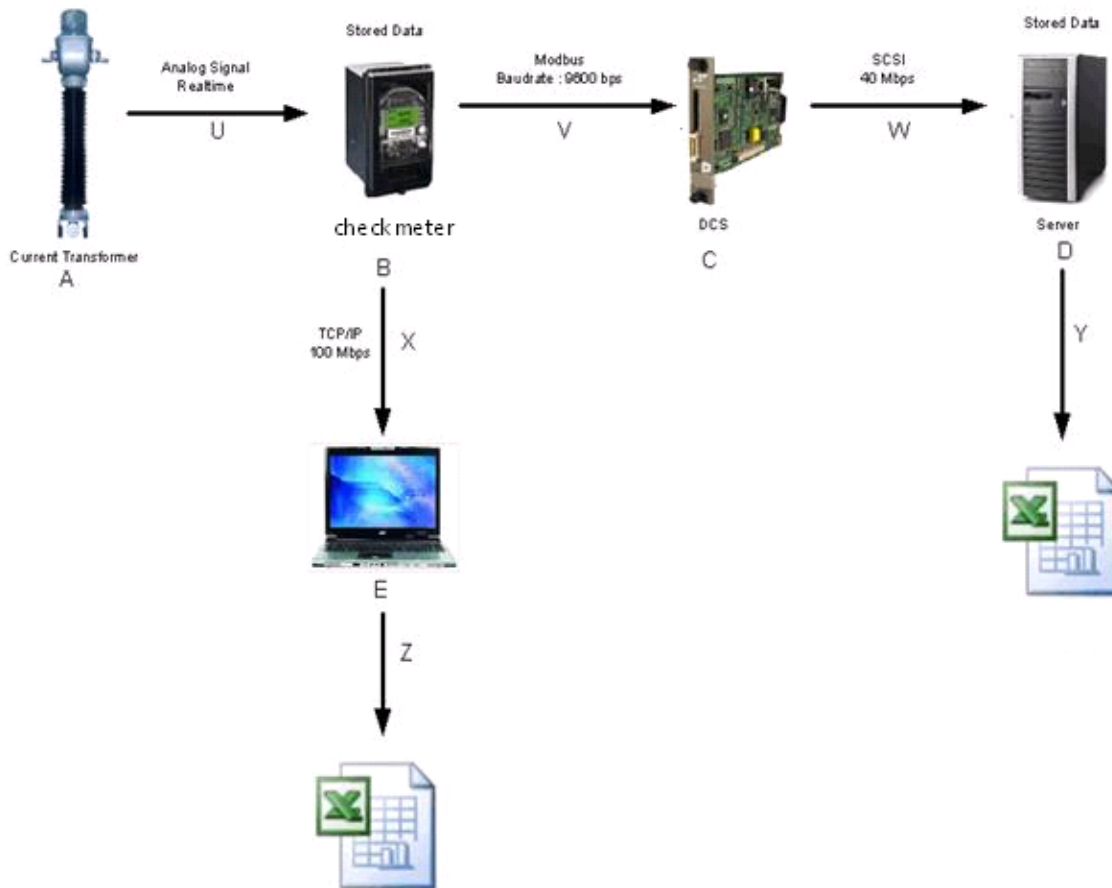
EG Wayang Windu Unit 2	Unit 2	Unit 2	Unit 2	Difference between Main meter and Check Meter (Downloaded monthly from meter)	Difference between Main meter and Check Meter (Downloaded daily from DCS)	Difference between Che Meter (download monthly from kWh met and Check Met (downloaded daily fro DCS)
	Main Meter	Check Meter	Check Meter			
	Downloaded monthly from kWh meter	Downloaded monthly from kWh meter	Downloaded daily from DCS			
	MWh	MWh	MWh			
Jan-13	84,001.022	84,003.642	84,003.438	0.003%	0.003%	0.000%
Feb-13	74,472.121	74,473.813	74,472.688	0.002%	0.001%	-0.002%
Mar-13	84,024.416	84,026.920	84,027.758	0.003%	0.004%	0.001%
Apr-13	80,902.576	80,904.844	80,852.523	0.003%	-0.062%	-0.065%
May-13	82,876.906	82,878.724	82,876.203	0.002%	-0.001%	-0.003%
Jun-13	80,144.662	80,147.745	80,148.297	0.004%	0.005%	0.001%
Jul-13	80,120.746	80,123.005	80,122.313	0.003%	0.002%	-0.001%
Aug-13	78,553.149	78,557.494	78,554.781	0.006%	0.002%	-0.003%
Sep-13	74,213.204	74,221.215	74,221.125	0.011%	0.011%	0.000%
Oct-13	76,727.617	76,736.441	76,731.625	0.011%	0.005%	-0.006%
Nov-13	77,305.837	77,313.910	77,312.375	0.010%	0.008%	-0.002%
Dec-13	74,418.343	74,427.121	74,426.94	0.012%	0.012%	0.000%
Jan-14	75,927.821	75,936.945	75,937.500	0.012%	0.013%	0.001%
Feb-14	67,955.680	67,964.938	67,964.188	0.014%	0.013%	-0.001%
Mar-14	79,329.641	79,342.173	79,342.688	0.016%	0.016%	0.001%
Apr-14	74,899.006	74,940.314	74,939.211	0.055%	0.054%	-0.001%
May-14	82,352.263	82,362.072	82,359.695	0.012%	0.009%	-0.003%
Jun-14	79,682.300	79,691.598	79,691.500	0.012%	0.012%	0.000%
Jul-14	81,858.574	81,868.421	81,868.000	0.012%	0.012%	-0.001%
Aug-14	80,963.667	80,972.223	80,971.906	0.011%	0.010%	0.000%
Sep-14	75,412.938	75,418.322	75,416.594	0.007%	0.005%	-0.002%
Oct-14	78,405.483	78,418.049	78,415.813	0.016%	0.013%	-0.003%
Nov-14	77,566.528	77,578.976	77,578.875	0.016%	0.016%	0.000%
Dec-14	78,024.163	78,032.280	78,095.170	0.010%	0.091%	0.081%

EG _y	Main meters	Check meters	Check meters	Difference between Main meter and Check Meter (Downloaded monthly from meter)	Difference between Main meter and Check Meter (Downloaded daily from DCS)	Difference between Check Meter (downloaded monthly from kWh meter) and Check Meter (downloaded daily from DCS)
	Downloaded monthly from kWh meter	Downloaded monthly from kWh meter	Downloaded daily from DCS			
	MWh	MWh	MWh			
Jan-13	167,061.952	167,061.797	167,060.188	0.000%	-0.001%	-0.001%
Feb-13	148,932.090	148,932.954	148,932.938	0.001%	0.001%	0.000%
Mar-13	166,284.818	166,289.187	166,286.320	0.003%	0.001%	-0.002%
Apr-13	160,560.170	160,565.381	160,463.711	0.003%	-0.060%	-0.063%
May-13	163,011.732	163,018.647	163,009.180	0.004%	-0.002%	-0.006%
Jun-13	154,389.587	154,397.403	154,397.703	0.005%	0.005%	0.000%
Jul-13	158,462.352	158,467.733	158,466.016	0.003%	0.002%	-0.001%
Aug-13	156,444.915	156,454.733	156,453.094	0.006%	0.005%	-0.001%
Sep-13	148,905.072	148,922.605	148,922.406	0.012%	0.012%	0.000%
Oct-13	152,997.554	153,018.352	153,012.219	0.014%	0.010%	-0.004%
Nov-13	148,183.375	148,205.392	148,204.000	0.015%	0.014%	-0.001%
Dec-13	154,349.220	154,371.946	154,372.875	0.015%	0.015%	0.001%
Jan-14	151,570.014	151,594.447	151,593.375	0.016%	0.015%	-0.001%
Feb-14	134,000.036	134,025.927	134,025.688	0.019%	0.019%	0.000%
Mar-14	157,512.764	157,544.501	157,545.438	0.020%	0.021%	0.001%
Apr-14	152,539.388	152,601.873	152,598.023	0.041%	0.038%	-0.003%
May-14	161,919.286	161,951.764	161,949.695	0.020%	0.019%	-0.001%
Jun-14	156,448.503	156,490.979	156,473.438	0.027%	0.016%	-0.011%
Jul-14	161,425.597	161,458.113	161,458.000	0.020%	0.020%	0.000%
Aug-14	159,309.878	159,342.030	159,342.109	0.020%	0.020%	0.000%
Sep-14	150,147.198	150,174.825	150,173.688	0.018%	0.018%	-0.001%
Oct-14	154,565.771	154,606.988	154,605.125	0.027%	0.025%	-0.001%
Nov-14	152,712.890	152,757.301	152,757.969	0.029%	0.030%	0.000%
Dec-14	154,644.501	154,680.720	154,725.859	0.023%	0.053%	0.029%

EG Existing	Unit 1	Unit 1	Unit 1	Difference between Main meter and Check Meter (Downloaded monthly from kWh meter)	Difference between Main meter and Check Meter (Downloaded daily from DCS)	Difference between Check Meter (downloaded monthly from kWh meter) and Check Meter (downloaded daily from DCS)
	Main Meter	Check Meter	Check Meter			
	Downloaded monthly from kWh meter	Downloaded monthly from kWh meter	Downloaded daily from DCS			
	MWh	MWh	MWh			
Jan-13	83,060.929	83,058.155	83,056.750	-0.003%	-0.005%	-0.002%
Feb-13	74,459.969	74,459.142	74,460.250	-0.001%	0.000%	0.001%
Mar-13	82,260.401	82,262.266	82,258.563	0.002%	-0.002%	-0.005%
Apr-13	79,657.594	79,660.538	79,611.188	0.004%	-0.058%	-0.062%
May-13	80,134.826	80,139.923	80,132.977	0.006%	-0.002%	-0.009%
Jun-13	74,244.925	74,249.658	74,249.406	0.006%	0.006%	0.000%
Jul-13	78,341.606	78,344.727	78,343.703	0.004%	0.003%	-0.001%
Aug-13	77,891.766	77,897.239	77,898.313	0.007%	0.008%	0.001%
Sep-13	74,691.868	74,701.390	74,701.281	0.013%	0.013%	0.000%
Oct-13	76,269.937	76,281.911	76,280.594	0.016%	0.014%	-0.002%
Nov-13	70,877.538	70,891.482	70,891.625	0.020%	0.020%	0.000%
Dec-13	79,930.877	79,944.825	79,945.938	0.017%	0.019%	0.001%
Jan-14	75,642.193	75,657.502	75,655.875	0.020%	0.018%	-0.002%
Feb-14	66,044.356	66,060.989	66,061.500	0.025%	0.026%	0.001%
Mar-14	78,183.123	78,202.329	78,202.750	0.025%	0.025%	0.001%
Apr-14	77,640.382	77,661.558	77,658.813	0.027%	0.024%	-0.004%
May-14	79,567.023	79,589.692	79,590.000	0.028%	0.029%	0.000%
Jun-14	76,766.203	76,799.381	76,781.938	0.043%	0.020%	-0.023%
Jul-14	79,567.023	79,589.692	79,590.000	0.028%	0.029%	0.000%
Aug-14	78,346.211	78,369.807	78,370.203	0.030%	0.031%	0.001%
Sep-14	74,734.260	74,756.503	74,757.094	0.030%	0.031%	0.001%
Oct-14	76,160.288	76,188.939	76,189.313	0.038%	0.038%	0.000%
Nov-14	75,146.362	75,178.325	75,179.094	0.043%	0.044%	0.001%
Dec-14	76,620.338	76,648.440	76,630.689	0.037%	0.014%	-0.023%

It is to be noted that there is a slight difference between the check meter reading downloaded from the internal storage of the check kWh meter and the check meter reading from the DCS. However, both the check meter reading downloaded from the internal storage of the check kWh meter and the check meter reading from the DCS are within the tolerable 0.4% difference with the reading from the main kWh meter. Furthermore, the check meter reading from the DCS gives the lowest reading for both EG_y and $EG_{existing}$, and therefore this is considered conservative.

The slight difference between the check meter reading downloaded from the internal storage of the check kWh meter and the check meter reading from the DCS can be explained through the diagram below, i.e. the data from check kWh meter (figure B) is transmitted to DCS Process Control unit (DCS PCU) through serial communication protocol modbus and baudrate 9600 bps (figure V), which is then transmitted to PGP Server (DCS Human Machine Interface – figure D) through SCSI with baudrate 40 Mbps (figure W).



Document information

<i>Version</i>	<i>Date</i>	<i>Description</i>
04.0	25 June 2014	<p>Revisions to:</p> <ul style="list-style-type: none"> • Include the Attachment: Instructions for filling out the monitoring report form (these instructions supersede the "Guideline: Completing the monitoring report form" (Version 04.0)); • Include provisions related to standardized baselines; • Add contact information on a responsible person(s)/ entity(ies) for completing the CDM-MR-FORM in A.6 and Appendix 1; • Change the reference number from <i>F-CDM-MR</i> to <i>CDM-MR-FORM</i>; • Editorial improvement.
03.2	5 November 2013	Editorial revision to correct table in page 1.
03.1	2 January 2013	Editorial revision to correct table in section E.5.
03.0	3 December 2012	Revision required to introduce a provision on reporting actual emission reductions or net anthropogenic GHG removals by sinks for the period up to 31 December 2012 and the period from 1 January 2013 onwards (EB70, Annex 11).
02.0	13 March 2012	Revision required to ensure consistency with the "Guidelines for completing the monitoring report form" (EB 66, Annex 20).
01	28 May 2010	EB 54, Annex 34. Initial adoption.
Decision Class: Regulatory Document Type: Form Business Function: Issuance Keywords: monitoring report		