



**Monitoring report form for CDM programme of activities
(Version 02.0)**

Complete this form in accordance with the instructions attached at the end of this form.

MONITORING REPORT

Title of the PoA	Tanzania Renewable Energy Program	
UNFCCC reference number of the PoA	9904	
Version numbers of the PoA-DD applicable to this monitoring report	Version 8 dated 23/04/2014	
Version number of this monitoring report	01	
Completion date of this monitoring report	20/02/2018	
Monitoring period number	Second monitoring period	
Duration of this monitoring period	From 01/01/2017 to 31/12/2017 (first and last days included).	
Monitoring report number for this monitoring period	01 (Single monitoring report for all CPAs in the PoA covered during this monitoring period)	
Coordinating/managing entity	Renewable Energy Agency	
Host Parties	Host Party of the PoA	Is this the host Party of a CPA covered in this monitoring report? (yes/no)
	United Republic of Tanzania	Yes
Sectoral scopes	01 – Energy Industries (renewable/non-renewable sources)	
Applied methodologies and standardized baselines	<ul style="list-style-type: none"> AMS I.D. Grid connected renewable electricity generation, Version 17. AMS I.F. Renewable electricity generation for captive use and mini-grid, Version 02. 	
Amount of GHG emission reductions or net anthropogenic GHG removals achieved by all CPAs covered in this monitoring report in this monitoring period	Amount achieved before 1 January 2013	Amount achieved from 1 January 2013
	0 tCO _{2e}	19,884 tCO _{2e}
Amount of GHG emission reductions or net anthropogenic GHG removals estimated ex ante for this monitoring period in the CPA-DDs for the CPAs covered in this monitoring report	49,698 tCO _{2e}	

PART I Monitoring of programme of activities (PoA)

SECTION A. Description of PoA

A.1. General description of PoA

Tanzania has, over the years, strived to create an appropriate policy environment to attract private investments to the renewable energy generation sector. The National Energy Policy 2003 sets national energy objectives to ensure the availability of reliable and affordable energy supplies and to promote energy efficiency in order to support national development goals. The policy recognizes that, the main thrust should be private initiatives and investments for exploring the local energy sources. The policy sets an entirely new approach to modern energy in the rural areas of Tanzania and the government has committed itself to develop and implement the new strategy to address modern energy needs of over 85% of Tanzanians living in the rural areas.

For these reasons, the Rural Energy Board (REB), the Rural Energy Agency (REA) and the Rural Energy Fund (REF) were established and entrusted with the role of promoting, stimulating and facilitating improved access to modern energy services in the rural areas through empowering both public and private sector initiatives in the rural energy.

The main objective of this programme of activities (PoA) is to increase the access to modern energy services in Tanzania by promoting both off-grid (isolated mini-grid) and national grid renewable energy projects in the country using photovoltaic, wind, hydro and biomass technologies for electricity generation. The program also aimed for further assisting the project developers to invest and implement renewable energy projects. This program provides a platform for overcoming institutional, financial and structural hurdles for the development of small scale renewable energy projects in Tanzania.

REA, under the Ministry of Energy and Minerals (MEM) of the United Republic of Tanzania, is the nodal agency to promote rural electrification projects in Tanzania. REA is responsible for implementing the PoA and acts as the coordinating and managing entity (CME).

REA, with the assistance of a the World Bank, is supporting small rural and renewable energy initiatives through (i) an enabling policy and regulatory framework, including standardized power purchase agreements and simplified regulatory rules which reduce some of the transaction costs for small renewable power projects (ii) a subsidy scheme for new connections in rural areas (performance grants) and technical assistance/pre-investment support (matching grants) for the project developers and (iii) a line of credit (LOC) to the Tanzanian financial institutions for long-term lending to small renewable energy projects.

As the CME for the registered small-scale PoA, REA performs the following main activities: (i) coordinating the implementation of the PoA (ii) screening and accepting the CPAs under the program (iii) supporting the effective commercialization of Certified Emission Reductions (CERs) (iv) liaising with the project developers for maintaining the required database for verification and (v) following up any other functions that need to be performed as per the PoA rules.

The CPAs were implemented by the project developers, building on REA's existing relationship with the individual project developers. REA entered into a contractual agreement with each of the individual power projects (CPAs). The signed contracts give REA the legal rights to deal with the carbon credits that are generated from these projects, monitor the project implementation and all necessary parameters that are required for calculating the emission reductions from each CPA.

This is the second monitoring period of the PoA from 01/01/2017 to 31/12/2017 (first and last days included). The cumulative net electricity exported to grid and mini-grids (Isolated/TANESCO) by all the CPAs included under the PoA during the monitoring period is 26,621 MWh. The CERs generated during this monitoring period is 19,884 tCO₂e.

A.1.1. Corresponding generic component project activities (CPAs).

Title and reference number of the corresponding generic CPA	Version of the PoA-DD	Sectoral scopes	Applied methodologies and standardized baselines
Renewable energy technology (hydro, wind, biomass or PV) connected to the national utility main grid avoiding generation from mix of fuels. Ref no: CPA category 01	Version 08 dated 23/04/2014	01 - Energy Industries (Renewable / Non-renewable sources)	AMS I.D. Grid connected renewable electricity generation, Version 17 ¹ .
Renewable energy technology (hydro, wind, biomass or PV) connected to the existing or new isolated mini-grids replacing existing dedicated diesel based power generation Ref no: CPA category 02			AMS I.F. Renewable electricity generation for captive use and mini-grid, Version 02 ² .
Renewable energy technology (hydro, wind, biomass or PV) supplies electricity to both the national grid and the existing or new isolated mini-grids. Ref no: CPA category 03			AMS I.D. Grid connected renewable electricity generation, Version 17. AND AMS I.F. Renewable electricity generation for captive use and mini-grid, Version 02.

A.1.2. CPAs included in the PoA

Title and UNFCCC reference number of the CPA	Title and reference number of the corresponding generic CPA	Version of the PoA-DD	Crediting period type and duration	Covered in this monitoring report? (yes/no)
Mapembasi hydro power project, Njombe district, 9904-0001	Renewable energy technology (hydro, wind, biomass or PV) supplies electricity to both national grid and existing or new isolated mini-grids. Ref no: CPA category 03	Version 08 dated 23/04/2014	Renewable crediting type, 01/01/2015 - 31/12/2021	No ³
NextGen solar	Renewable energy technology		Renewable	No ⁴

¹ <https://cdm.unfccc.int/methodologies/DB/W3TINZ7KKWCK7L8WTFQQOFQQH4SBK>

² <https://cdm.unfccc.int/methodologies/DB/9KJWQ1G0WEG6LKHX21MLPS8BQR7242>

³ Project is delayed.

⁴ Project is delayed

project, Kigoma region, 9904-0002	(hydro, wind, biomass or PV connected to existing or new isolated mini-grids replacing existing dedicated diesel based power generation Ref no: CPA category 02		crediting type, 04/06/2014 - 03/06/2021	
Mbinga hydroelectric Project, 9904-0003	Renewable energy technology (hydro, wind, biomass or PV connected to existing or new isolated mini-grids replacing existing dedicated diesel based power generation Ref no: CPA category 02		Renewable crediting type, 01/12/2015 - 30/11/2022	Yes
Yovi small hydro power project, 9904-0004	Renewable energy technology (hydro, wind, biomass or PV) supplies electricity to both national grid and existing or new isolated mini-grids. Ref no: CPA category 03		Renewable crediting type, 01/12/2015 - 30/11/2022	Yes
Tulila hydro- electric plant, 9904-0005	Renewable energy technology (hydro, wind, biomass or PV) supplies electricity to both national grid and existing or new isolated mini-grids. Ref no: CPA category 03		Renewable crediting type, 01/12/2015 - 30/11/2022	Yes
Maguta small hydro power project, 9904-0006	Renewable energy technology (hydro, wind, biomass or PV) supplies electricity to both national grid and existing or new isolated mini-grids. Ref no: CPA category 03		Renewable crediting type, 01/11/2016 - 31/10/2023	No ⁵
Ngombeni biomass power plant project, 9904-0007	Renewable energy technology (hydro, wind, biomass or PV connected to existing or new isolated mini-grids replacing existing dedicated diesel based power generation Ref no: CPA category 02		Renewable crediting type, 1/09/2016 - 31/08/2023	Yes ⁶
Ikondo micro hydro power plant,	Renewable energy technology (hydro, wind, biomass or PV) supplies electricity to both national grid and existing or		Renewable crediting type, 14/10/2016 -	Yes

⁵ Project is not yet commissioned

⁶ Power plant is not in operation due to technical issues. So no CER is claimed from this CPA in this period.

9904-0008	new isolated mini-grids. Ref no: CPA category 03		13/10/2023	
Darakuta mini hydro project, 9904 - 0009	Renewable energy technology (hydro, wind, biomass or PV) connected to the national utility main grid avoiding generation from mix of fuels. Ref no: CPA category 01		Renewable crediting type, 12/12/2017 - 11/12/2024	Yes

A.2. Coordinating/managing entity

The coordinating/managing entity (CME) of the PoA is the “Rural Energy Agency (REA)”.

SECTION B. Implementation of PoA

B.1. Description of implemented PoA

Management system

The management system was developed in accordance with the “Standard for demonstration of additionality, development of eligibility criteria and application of multiple methodologies for programme of activities”, Version 3, EB74.

REA is the PoA managing entity. The operational and management arrangements established by the REA for the implementation of the PoA are described below.

The operational and management structure provided information and data flow channel between the CME and the CPA implementer. At the CPA level, REA ensured the actual involvement of field personnel (power plant operators/technicians) in the monitoring, data collection and record keeping activities. REA requested each CPA to designate a CPA manager at the project developer head office and an engineer in-charge of the power plant operation. The implementation structure is given in figure 1.

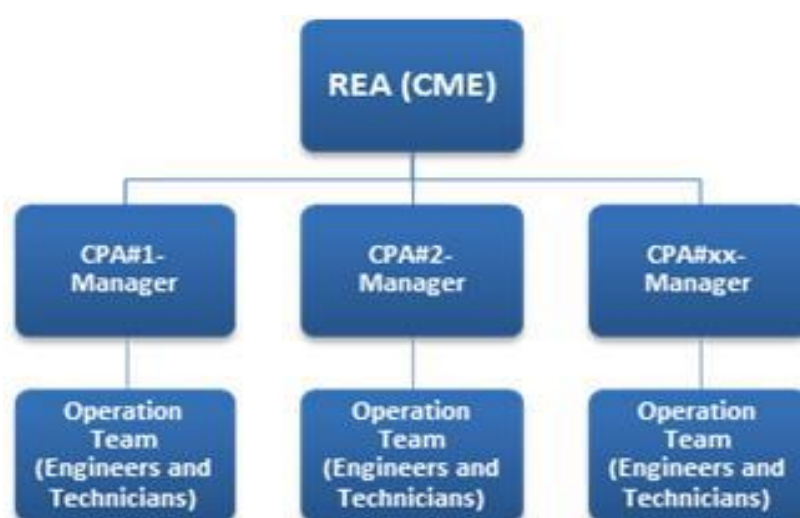


Figure 1: Operational and management structure

Operation and management plan

The operation and management plan is described below.

i) A record keeping system for each CPA under the PoA

A record keeping system was established by REA, which contained the following details providing the unique identity for each SSC-CPA. The details include, but not limited to:

- Name of the CPA.
- CPA number.
- Name of the CPA implementer.
- Contact details of the implementing entity (Address/Contact person/Phone/e-mail/fax).
- Location of the CPA (e.g., GPS coordinates of the power house and the water intake for a hydro power plant).
- Type of renewable energy source.
- Installed capacity of the CPA.
- The record on technical specification of each renewable energy plant participating in the PoA
- Type and name of the grid (national grid, TANESCO mini-grid, existing isolated grid, new isolated grid) fed by the project.
- Gross electricity generation.
- Net electricity generation and electricity sales.
- Meter calibration.
- Commissioning date.

Two databases were developed by REA for record keeping – one at the CPA level and the other at the PoA level.

At the CPA level, the CPA implementer was responsible for managing the records and the data associated with each SSC-CPA. They maintained a proper electronic database for these records. A hard copy backup of all these records was also made available. In case of failure in the electronic data transfer system, manually recorded project details at the site were collected and compiled, which was sent to REA. The record keeping was carried out using the field instruments, hardware and software installed in every project site and/or manual data recording in the log book. The recorded data was submitted to REA, which was responsible to archive the data as per the individual CPA.

At the PoA level, REA managed and maintained a record of complete database on all CPAs and the entire PoA. REA cross-checked the data from all the CPAs to ensure completeness, accuracy and consistency. The PoA level database was obtained from the CPA level database after REA's own review work.

Paper and electronic records will be kept during the entire crediting period for each CPA and for additional two years after the crediting period.

ii) Records of arrangements for training and capacity development for personnel

REA was responsible for keeping the record on training and capacity development activities provided to the relevant personnel. The record includes:

- Date, time and venue of each training and capacity development event
- Participants record for each event
- Agenda for each training and capacity development event
- Manuals and training materials for each training and capacity development event

All relevant project staff were trained in various aspects of the CPA operation and management. Operators also pursued on-site training.

iii) Measures for continuous improvements of the PoA management system

The Project Manager of the PoA organized a meeting with all his/her staff and CPA personnel to review the performance of the PoA management system to identify issues to be addressed, to obtain continuous improvements of the PoA management system.

B.2. Post-registration changes to PoA

B.2.1. Corrections

Not applicable.

B.2.2. Inclusion of monitoring plan

Not applicable.

B.2.3. Permanent changes to the registered monitoring plan, or permanent deviation of monitoring from the applied methodologies, standardized baselines, or other applied standards or tools.

Not applicable.

B.2.4. Changes to programme design

Not applicable.

PART II Monitoring of CPAs.

SECTION C. Implementation of CPAs

C.1. Description of implemented CPAs

Currently nine CPAs are included in this PoA out of which three CPAs are not yet implemented. The details of the remaining six CPAs considered in this report are provided in Table 1. Out these, the CPA 7 (Ngombeni biomass power plant project) could not generate any power during the monitoring period due to technical issues and hence no CER is claimed from that CPA.

Table 1: CPAs of the PoA covered in this monitoring period

CPA reference no.	CPA name⁷	Registered / Included⁸	Total capacity (MW)	Project implementer
9904 - 0003	Mbinga hydroelectric project	06/11/2015	1.12	Andoya Hydroelectric Power Company Limited
9904 - 0004	Yovi small hydro power project	06/11/2015	2.3	Yovi Hydro Power Company Limited

⁷ For simplicity, in this monitoring report these CPAs are shortly referred to as Mbinga, Yovi, Tulila, Ngombeni, Ikondo and Darakuta respectively.

⁸ https://cdm.unfccc.int/ProgrammeOfActivities/poa_db/DEI4JOVUTN7A0936CP1WLMSGYB58ZF/viewCPAs

CPA reference no.	CPA name ⁷	Registered / Included ⁸	Total capacity (MW)	Project implementer
9904 - 0005	Tulila hydroelectric plant	06/11/2015	7.5	Tulila Hydroelectric Plant Company Limited
9904 - 0007	Ngombeni biomass power plant project	11/08/2016	2.5	Ngombeni Power Limited
9904 - 0008	Ikondo micro hydro power plant	14/10/2016	0.430	Matembwe Village Company Limited
9904 - 0009	Darakuta mini hydro project	12/12/2017	1.075	Darakuta Hydropower Development Company Limited

This report is prepared as a single monitoring report for the all CPAs under the PoA for the second monitoring period from 01/01/2017 to 31/12/2017 (first and last days included). Major milestones during the project implementation of 6 CPAs that were commissioned so far are furnished in table 2.

Table 2: Timeline of the CPA implementation

Description	Mbinga	Yovi	Tulila	Ngombeni	Ikondo	Darakuta
CPA start date	22/10/12	19/07/12	11/10/13	31/01/2012	19/12/13	04/03/2015
CPA inclusion date	06/11/15	06/11/15	06/11/15	11/08/2016	14/10/16	12/12/2017
Start date of the first crediting period	01/12/15	01/12/15	01/12/15	01/09/2016	14/10/16	12/12/2017
Commissioning date	19/03/15 ⁹	06/11/15 ¹⁰	12/09/15 ¹¹	27/01/2014 ¹²	26/01/16 ¹³	19/04/2016 ¹⁴

Technical description of the CPA

Mbinga:

This CPA supplies power to isolated and TANESCO mini-grids and comes under CPA category 02.

⁹ Andoya commission report dated 29/04/2015

¹⁰ Yovi-TANESCO interconnection report dated 26/11/2015

¹¹ Date as per TANESCO interconnection certificate

¹² Ngombeni-TANESCO interconnection report dated 04/02/2014

¹³ Provisional acceptance certificate

¹⁴ Date as per TANESCO interconnection certificate

This CPA is a run-of-the-river hydroelectric power plant with a capacity of 1.12 MW (560 kW x 2) installed in two phases. The plant design consists of a weir, intake, desilting bay, canal, forebay, penstock pipe, power house, electromechanical machines, controls, step up transformer and transmission line to Mbinga township being the main line. A medium voltage line to Mbangamao, Lifakara and Kilimani villages branches from the main line. The plant design also includes improvement of 12 km and 2 km new stretch. The phase 1 (560 kW) of power plant is commissioned and in operation now. The technical specifications for phase 2 will be similar to that of phase 1 unit.

The technical specifications of installed phase 1 plant are given in table 3 and 4.

Table 3: Specification of installed power plant for phase 1

Turbine	Type	Horizontal Francis Turbine
	Rated speed	750 rpm
	Rated capacity	550 kW
Generator	Frequency	50 HZ
	Rated voltage	400 V
	Rated Capacity	700 kVA (560 kW)
	Power factor	0.8 PF

Table 4: Generation power loss

Generation Losses	Value
Turbine speed	50 rpm
Generator Efficiency	98%
Net electric power generated	495 kW at power station
Transformer efficiency	97%
Line efficiency	98%
Available power at user end	470 kW
Installed output capacity	4,117 MWh
Delivered output estimates	3,293 MWh
Losses in the distribution	5.43% = 179 MWh
Net saleable electricity	3,114 MWh/y

Yovi¹⁵:

¹⁵ As per revised Yovi CPA DD submitted for PRC approval to the verifying DOE (first verification). In process of PRC.

This CPA supplies power to TANESCO grid and minigrid and comes under CPA category 03.

Yovi CPA is a run-of-the-river hydroelectric power plant with a capacity of 2.3 MW (1 MW + 1.3 MW) installed in two phases. In first phase, a 1 MW Pelton turbine was installed and 33 kV transmission line was constructed to supply electricity to the National grid. In the next phase, additional 1.3 MW Pelton turbine will be installed later. Also, an isolated mini-grid network will be developed.

The hydropower plant utilizes a natural head in the Yovi river. The powerhouse is constructed in a flat area at an elevation of 867 m height above mean sea level (AMSL) near the right bank of the river and is a one floor building with a pitched roof, that lodge the Pelton turbines and all the related electrical and mechanical equipment. The main features of the 2.3 MW hydro power plant are given in table 5.

Table 5: Specification of 2.3 MW hydro power plant

Water level at the diversion weir (minimum)	1,225.01 m above mean sea level (AMSL)
Water level in the fore bay	1,224.30 m AMSL
Powerhouse elevation	867.00 m AMSL
Tail water level	864.48 m AMSL
Head	357.30 m
Plant flow	360 l/s – 520 l/s
Mean flow	360 l/s – 520 l/s
Installed capacity	2.3 MW
Penstock diameter	600 mm
Penstock length	1,725 m
Expected generation	15.1 GWh/y

Technical specification of installed 1 MW hydro power plant is given in table 6.

Table 6: Specification of installed power plant for phase 1

Turbine	Type	Horizontal Pelton Turbine
	Rated speed	1,000 rpm
	Rated capacity	995 kW
Generator	Frequency	50 Hz
	Rated voltage	3,000 V
	Rated capacity	1,800 kVA
	Power factor	0.8 PF

Tulila:

This CPA supplies power to the national grid and isolated mini-grids and comes under CPA category 03.

The CPA is a run-of-the-river hydroelectric power plant with an installed capacity of 7.5 MW (5 MW + 2.5 MW) in two phases. The power plant uses the natural base slope of the Ruvuma river at Tulila. It is constructed as a run-of-the-river hydroelectric power plant with earth fill dam and a weir system to divert the water to the power plant and utilize the naturally available high head. The surface area of the reservoir created by permanent impoundment is about 74,000 m². Water depth at the intake is 7.5 m which results in a total gross head of around 22.5 m.

The plant design consists of headworks including weirs, dams and intake, the tailworks, electromechanical machines and the powerhouse equipped with governors, transformers, medium voltage switchgear, indoor crane, drainage and dewatering system, control, monitoring and communication systems and an emergency power unit.

The whole weir system including dams and intake structure is constructed. The powerhouse will be equipped with three equisized turbines and is located at about 190 m downstream of the intake structure. It is connected to the intake structure by three separate penstocks in staggered diameters 2.3 / 2.5 m each. Due to the short distance, a surge shaft is not necessary. The water after passing through the turbines is diverted back to the Ruvuma river by a 100 m long tailrace channel. An existing branch of the river can be used for this purpose.

In phase 1, two turbine-generator units (2 x 2.5 MW) and two penstocks were installed and the generated power was fed into the Songea mini-grid. The phase 1 is in operation now. In phase 2, third identical turbine-generator unit and a penstock will be installed and will be connected to national grid through the interconnection of Songea mini-grid to the Makambako – Songea 132 kV transmission line which is expected to be completed by the end of 2018. Following the interconnection with the national grid, generated energy from the three identical turbines will be fed into the connected national grid. The main features of the power plant are given in table 7.

Table 7: Technical specification of power plant.

Parameter	Value
Turbine specifications	
Turbine type	Kaplan, axial flow with vertical axis
Rated output	2,581 kW (3 units: 2 in phase 1 and 1 in phase 2)
Rated speed	375 rpm
Rated efficiency	92%
Generator specifications	
Generator type	Synchronous
Generator capacity	3.044 MVA (3 units; 2 in phase 1 and 1 in phase 2)
Power factor	0.8

Generation voltage	6.6 kV
Efficiency	96%

Ngombeni:

This CPA supplies power to TANESCO mini-grid and comes under CPA category 02.

Ngombeni CPA is a 2.5 MW biomass power project, which covers an area of about 7,000 acres of land in Mafia Island. The area is comprised of sawmill, log yard, workshop, one office building and two staff houses nearby. The project is designed to use various biomass such as coconut palm tree wastes, different species of trees, bushes, etc. which are readily available as the main feed stock for electricity generation. The feed stock in general is derived from the discarded section of the coconut palm, trees, bushes, off-cuts, sawmill wastes, etc.

The feed stock from the chipper machine passes through the fire box in the boiler, which is burnt to generate heat. The heat generated boils the water in the boiler to produce steam at a pressure of 27– 30 bar and at 280-300 °C. The produced steam is then introduced into the turbine and is converted into mechanical energy through expansion in steam turbine. The mechanical energy rotates the generator, which in turn produces desired electric power.

The main features of the installed power plant are provided in table 8.

Table 8: Technical specification of power plant

Boiler capacity	10 ton/hr
Turbine capacity	2,500 kW
Generator capacity	3,125 kVA
Plant load factor	0.8
Expected electricity generation	15,023 MWh/y

Ikondo:

This CPA supplies power to both the national grid and the isolated mini-grid and comes under the CPA category 03.

Ikondo CPA is a run-of-the-river hydroelectric power plant with an installed capacity of 430 kW (80 kW + 350 kW), where water is diverted from Kyepa River and channeled through a 300 m long concrete lined canal into the head tank which has been located at the hill which enables the water to move downwards to the 22 m penstock effortlessly. The total amount of power generated in the hydroelectric power plant depends on the height of head tank and the amount of water flowing through the penstock. The flow from the penstock is forced into the turbine and the electricity is produced in the generator. At the end of the process, the utilized water from the power plant is normally released through a tailrace channel back into the Kyepa River.

The generated electricity is supplied to the national grid and to the isolated minigrid. The generate power is directed into the step-up transformer and fed into the distribution grid of Medium Voltage (MV) Lines.

Only the 350 kW unit is considered for CDM purpose. It is capacity addition to the existing 80 kW unit. As per registered CPA DD, it was assumed that 350 and 80 kW units will be connected to

single energy meter before power off-take. But there are synchronisation issues in connecting 350 kW and 80 kW to the same export point. 80 kW unit is still not connected to 350 kW unit energy meter. So electricity export recorded in 350 kW unit energy meter is from this unit alone. The same is used for CER estimations.

Main technical features of the installed power plant are provided in the table 9.

Table 9: Technical specification of power plant.

Key design parameter	Value
Penstock material	Steel
Penstock diameter	32 inches
Turbine type	Francis
Shaft orientation	Vertical
Speed	500 rpm
Net head	17m
Maximum flow rate	2.3 m ³ /s
Mechanical power	350 kW
Minimum global efficiency at 80% of the flow rate	92%
Nominal electrical power	450 kVA
Power factor	0.85
Excitation	Brushless

Darakuta:

This CPA supplies power to national grid and comes under the CPA category 01.

The CPA consists of a run-of-the-river power plant with installed capacity of 1 MW (320 kW + 680 kW) installed in two phases and supplies power to the national grid. The CPA implementer has been operating an existing 75 kW micro hydro power plant (not a CDM project and not covered under this PoA) which continues to supply power primarily for internal consumption of the ranch.

The water flow from the Kou river down the rift valley had scope for generating additional power. Hence, the CPA implementer planned to construct an additional 1 MW hydro power plant in two phases for supplying electricity to the TANESCO national grid. The phase 1 of 320 kW (160 kW +160 kW) was installed in April 2016 and is currently in operation. The remaining 680 kW is planned in phase 2, which is yet to be installed. These additional power plants have been planned as the CDM project units under this CPA. It is to be noted that 320 kW hydro power plant (phase 1) and the existing 75 kW hydro power plant are located within the same power house. The 680 kW unit will be housed in a different location.

Main technical features of the installed power plant are provided in the table 10.

Table 10: Technical specification of power plant.

No.	Parameter	Value
Turbine specification		
1	Number of units	2
2	Make	KSB
3	Type	Pump turbine
4	Rated capacity (kW)	160
5	Rated speed (RPM)	1,500
Generator specification		
1	Number of units	2
2	Make	Siemens
3	Frequency (Hz)	50
4	Rated voltage (V)	400
5	Rated capacity (kVA)	184
6	Power factor (P.F)	0.87
7	Rated capacity (kW)	160

Net GHG emission reduction:

Out of six CPAs included in this monitoring report, five CPAs operated normally during the monitoring period without any special events or situations which may impact the applicability of the methodology. One CPA (CPA 07) was not in operation at all due to technical issues.

The net emission reduction achieved in each CPA during this monitoring period is given in the table 11.

Table 11: Net emission reduction of each CPA

No.	CPA	Actual net emission reduction achieved (tCO ₂ e)
1	Mbinga	2,144
2	Yovi	2,575
3	Tulila	14,707
4	Ngombeni	0

No.	CPA	Actual net emission reduction achieved (tCO ₂ e)
5	Ikondo	425
6	Darakuta	33
	Total	19,884

It is also confirmed here that the power plant electricity export readings for each month are metered and the meter values are supported by monthly invoices for each CPA. Hence, the double counting of power generation and emission reduction is avoided.

C.2. Location of CPAs

Detail	Mbinga	Yovi	Tulila	Ngombeni	Ikondo	Darakuta
Host party	United Republic of Tanzania					
Region / State / Province, etc.	Ruvuma	Morogoro	Ruvuma	Pwani	Njombe	Manyara
City / Town / Community, etc.	Mbinga district	Msolwa village, Kilosa district	Mpepai – Tulila village, Mbinga / Songea district	Ngombeni, Dundani, Minaki, Chunguruma, Ras Mbisi Estates Village, Mafia district	Ikondo village, Njombe district	Darakuta ranch, Babati district
Geographical reference of project site						
Latitude (°S)	11.2708	7.1934	11.0947	7.6555	9.0754	3.9675
Longitude (°E)	35.5875	36.7141	35.2769	39.6608	35.233	35.6292

The location maps of the respective CPAs are shown in figure 2.

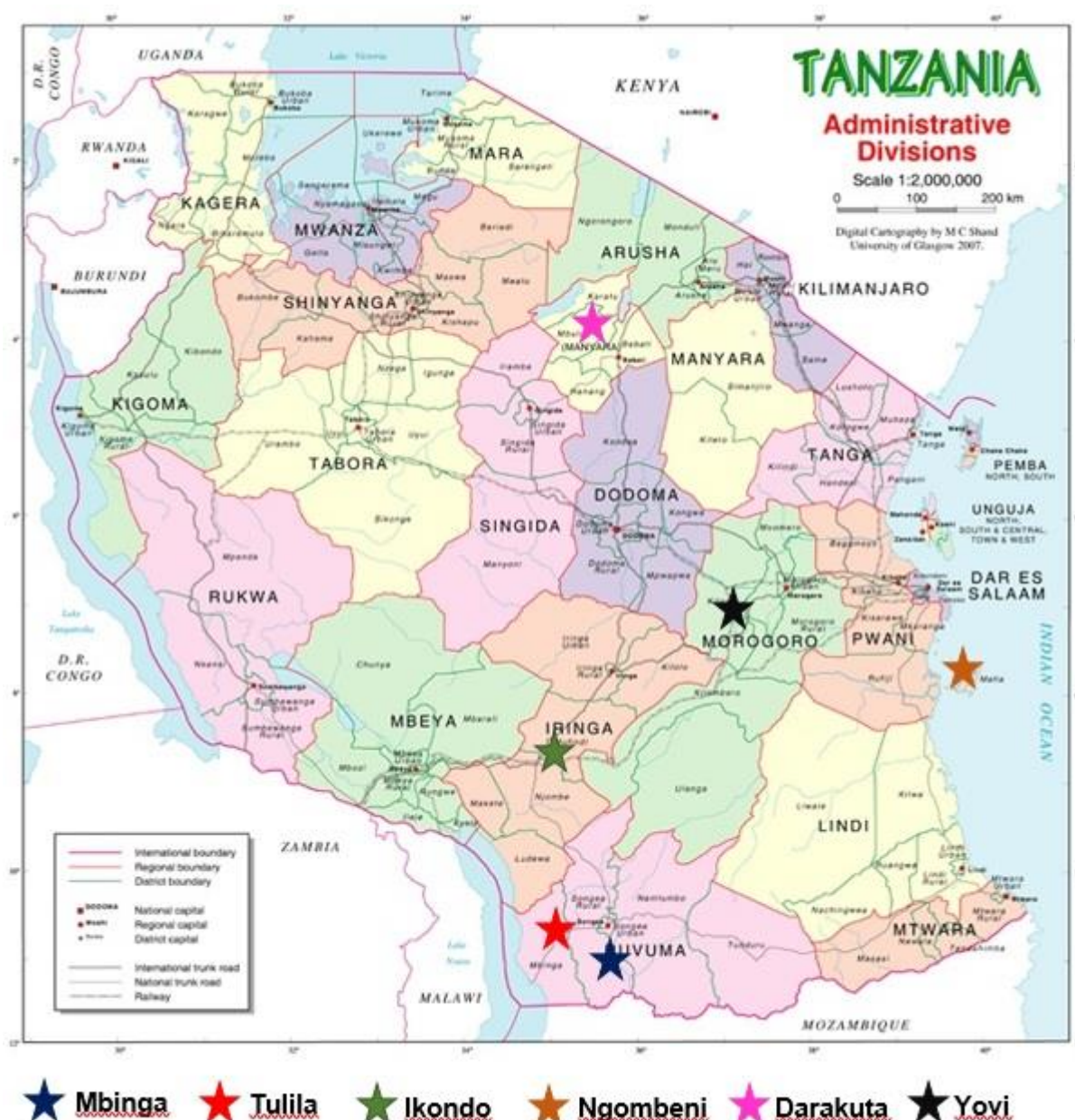


Figure 2: Location map of the reported CPAs

C.3. Post-registration changes to CPAs.

C.3.1. Temporary deviations from the monitoring plans in the included CPA-DDs, applied methodologies or standardized baselines.

Not applicable.

C.3.2. Corrections

Ngombeni CPA:

More clarity was added for the parameter “Moisture content (MC_{biomass})” in section B.4.2 of registered CPA DD. The moisture content of the biomass used is fixed ante. The value applied (30 -70%) covers all types of biomass residues that would be obtained from the coconut plantations. This parameters is fixed ex-ante for the entire crediting period and need not be rechecked again during

the monitoring period as long as the biomass wastes are obtained from coconut plantations. The latest CPA DD version 05 is provided to the verifying DOE (first verification) for the post registration change request without prior approval.

C.3.3. Changes to the start date of the crediting period.

Not applicable

C.3.4. Inclusion of monitoring plan.

Not applicable.

C.3.5. Permanent changes to the included monitoring plans, or permanent deviation of monitoring from the applied methodologies, standardized baselines, or other applied standards or tools.

Not applicable.

C.3.6. Changes to project design

Yovi CPA:

Yovi CPA was registered under category 02 – power supply to TANESCO mini-grid. However, during actual implementation, the power is supplied to TANESCO national grid and isolated mini-grid. A post registration change (PRC) request was submitted for this aspect as part of verification process. The revised Yovi CPA DD version 05 dated 06/10/2017 was provided to the verifying DOE (first verification) and is in process of PRC approval.

SECTION D. Description of monitoring system of CPA

The monitoring plan of the PoA is consistent with the methodology AMS-I.D (version 17) and AMS-I.F (Version 02). The monitoring structure and plan for a SSC-CPA is an integrated part of the management and monitoring plan of the PoA as described in section C and section B.7.2 (Part II) of the PoA.

The management system is developed in accordance with the “Standard for demonstration of additionality, development of eligibility criteria and application of multiple methodologies for programme of activities”.

Various parameters with respect to the project category were monitored in the power plants. Various data used for the estimation of emission reduction were also monitored. The data are archived electronically and will be stored for additional 2 years after the end of the crediting period of the CPA. REA as the CME, has supervised the implementation of the monitoring plan. REA also ensured that all the relevant staff of the CPAs as well as their own personnel are trained adequately in this task.

To ensure that the data is reliable and transparent, the CME also established quality assurance and quality control (QA & QC) measures to effectively control and manage the data reading, recording, auditing as well as archiving data and all relevant documents.

Project Category

Category 1 - Power projects connected to grid

Category 2 - Power projects connected to mini-grid

Category 3 - Power projects connected to both grid and mini-grid

Monitored parameters

The parameters to be monitored by each CPA is given in the table 12.

Table 12. Parameters to be monitored for each CPA

Parameter	Mbinga	Yovi	Tulila	Ngombeni	Ikondo	Darakuta
Net electricity generation supplied to the national grid		√	√		√	√
Net electricity supplied to the mini-grids	√	√	√	√	√	
Quantity of biomass consumed in a year				√		
Net calorific value of the biomass				√		

The above parameters were monitored by the plant operators at their project site and were entered in the data sheets.

Monitoring procedure

The gross electricity generation, if possible (for CPA that energy meters are installed just after generation) and the quantity of net electricity supplied to the grid were continuously measured using the energy meters with a maximum rated error of 0.5% as mandated by Energy and Water Utilities Regulatory Authority (EWURA).

Cumulative measurements were entered into an electronic database at the end of each month. Any problems occurring with the monitoring equipment were also captured. The CPA implementers produced the reports containing the monthly monitoring data files and details of any equipment faults and/or loss of data. The reports were submitted to the CME and project participants for review and acceptance. All records will be retained for at least two years after the end of the crediting period.

The following measures were taken relating to the monitoring equipment owned by the CPA implementer, its installation and operation.

- All meters are designed and manufactured to the accepted standards (Regulatory standards shall be followed for each electricity meter). Each CPA shall provide all information regarding the metering devices including accuracy class and calibration frequency required, at least annually.
- All monitoring equipment should be located in secure locations free from the possibility of accidental damage.
- Routine maintenance and calibration of all monitoring equipment will be performed in accordance with the utility standards, regular standards or the manufacturer's specification, whenever applicable, to ensure that the data remains accurate.

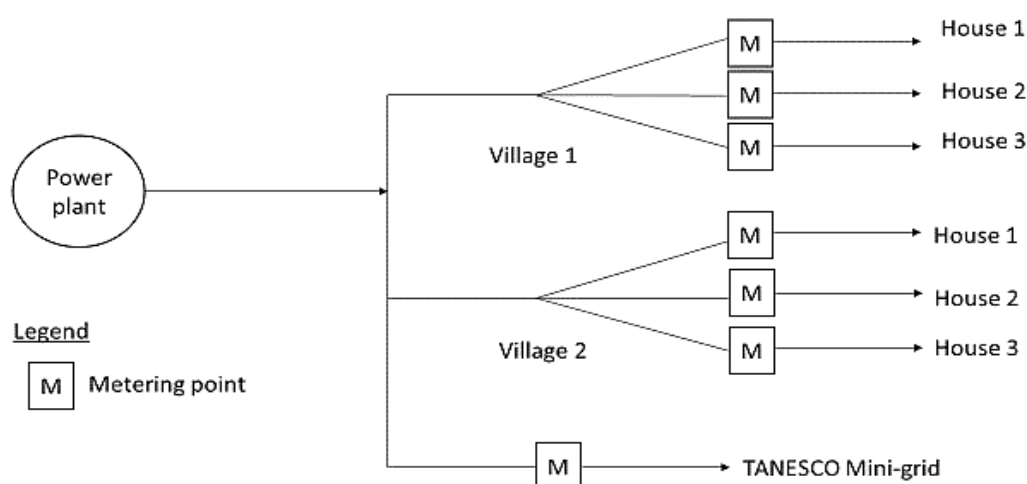
When all the generated electricity was delivered to the national grid, then the emission reduction (ER) was calculated based on the amount of electricity measured by the buyer. The project records were used primarily for cross-checking and secondarily for ER calculation in case the buyer could not measure the purchased electricity. In all the cases, the agreed amount of electricity used for billing purpose were the main base for ER calculation.

The technical specifications of power meters installed at Mbinga power plant is provided in the table 13.

Table 13: Technical details of the power meters installed at the mini-grid export point in Mbinga

Parameter	Main meter	Check meter
Model	EDMI Mk10E	EDMI Mk10E
Type	Bi-directional	Bi-directional
Accuracy	0.5s	0.5s
Serial No.	211108423	211108415
First calibration date	23/03/2015	23/03/2015
Second calibration date	17/01/2017	17/01/2017

The metering points of the Mbinga CPA is provided in the figure 3.

**Figure 3: Metering points for Mbinga CPA**

The technical details of the Yovi power meters is given in the table 14.

Table 14: Technical details of the power meters installed at the grid export point in Yovi

Parameter	Main meter	Check meter
Model	EDMI Mk 6N	EDMI Mk 6N
Type	Bi-directional	Bi-directional
Accuracy	0.5s	0.5s
Serial No.	208304008	208302546
First calibration date	06/11/2015	06/11/2015
Second calibration date	08/01/2017	09/01/2017

Figure 5 depicts the metering point of Yovi CPA.

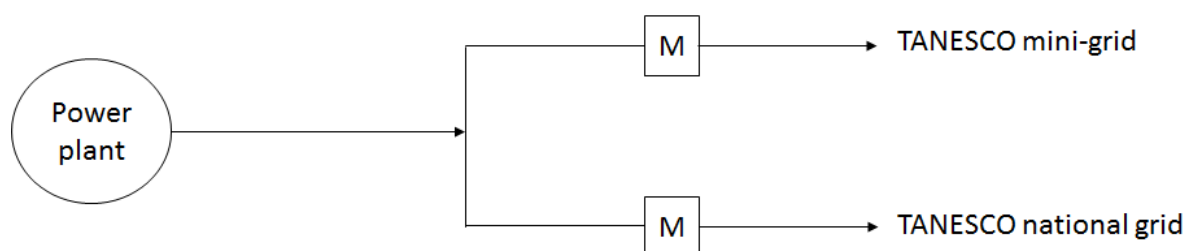


Figure 4: Metering points for Yovi CPA

The technical details of Tulila power meters are provided in the table 15.

Table 15: Technical details of the power meters installed at the mini-grid export point in Tulila

Parameter	Main meter	Check meter
Model	EDMI Mk10E	EDMI Mk 10E
Type	Bi-directional	Bi-directional
Accuracy	0.5s	0.5s
Serial No.	211112553	211112571
First calibration date	14/09/2015	14/09/2015
Second calibration date	16/01/2017	16/01/2017

Figure 5 depicts the metering points of the Tulila CPA.

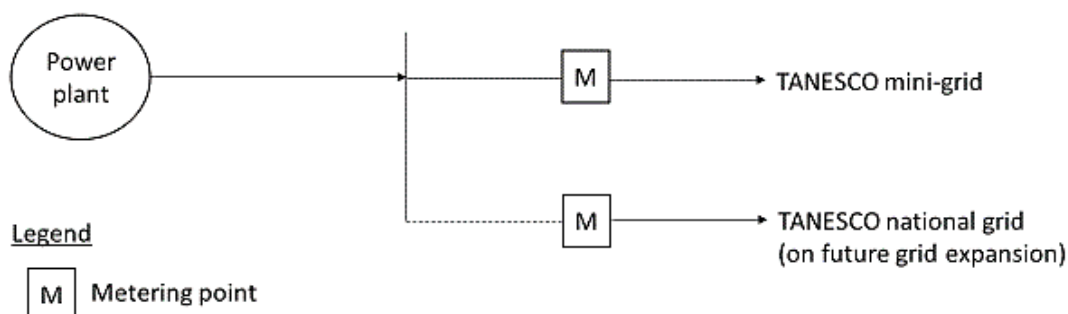


Figure 5: Metering points for Tulila CPA

The technical details of the Ngombeni power meter is given in the table 16.

Table 16: Technical details of the power meters installed at the mini-grid export point in Ngombeni

Parameter	Main meter	Check meter
Model	EDMI Mk 10E	EDMI Mk 10E
Type	Bi-directional	Bi-directional

Parameter	Main meter	Check meter
Accuracy	0.5 S	0.5 S
Serial number	211108280	211108294
First calibration date	27/01/2014	27/01/2014
Second calibration date	24/01/2017	24/01/2017

The metering points of the Ngombeni is given in the figure 6.

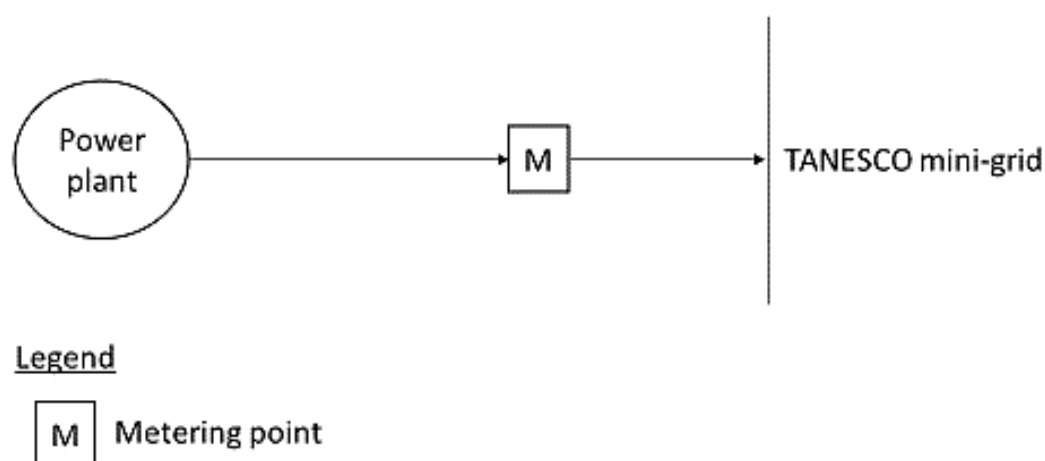


Figure 6: Metering points for Ngombeni CPA

The technical details of the Ikondo power meter connected to the national grid is given in the table 17.

Table 17: Technical details of the power meters installed at the grid export point in Ikondo.

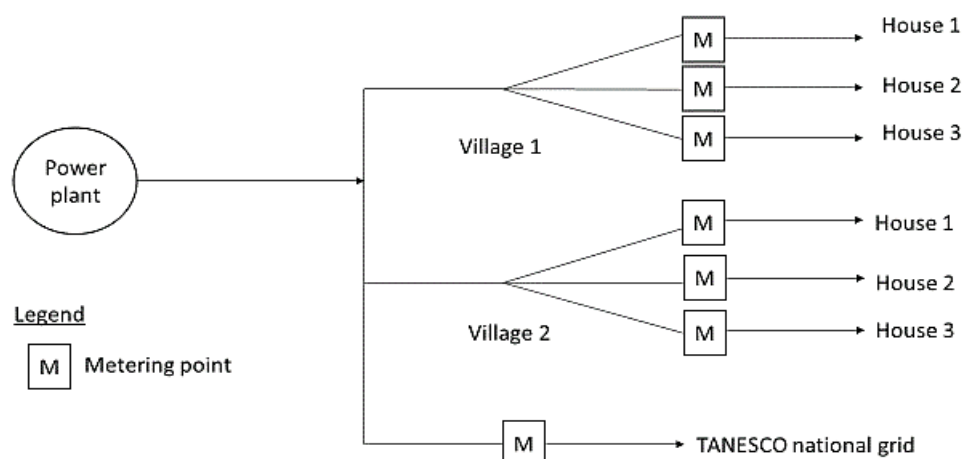
Parameter	Main meter	Check meter
Model	EDMI Mk 10E	EDMI Mk 10E
Type	Bi-directional	Bi-directional
Accuracy	0.5s	0.5s
Serial No.	212556509	212556508
First calibration date	11/11/2016	11/11/2016
Second calibration date	10/01/2017	10/01/2017

In Ikondo, for supplying electricity to the isolated minigrid, the metering points for the first three months (January 2017 to March 2017) is at the consumer end (refer figure 7) whereas from the month of April 2017, power meters were installed at the distribution point of the minigrid itself (refer figure 8). The technical details of the Ikondo power meters connected to the distribution points of the minigrid is given in the table 18.

Table 18. Technical details of the power meters installed at the distribution point of the minigrid in Ikondo.

Main meter		
Location name	Serial No.	Calibration date
Igumbilo	07-010631	12/01/2017
Matembwe HQ	2015-0513598	12/01/2017
Lung'angali	800153	12/01/2017
Matembwe mission	800175	12/01/2017
CEFA HQ Ikondo	2015-051356A	12/01/2017
Ikondo ofisini	800235	12/01/2017
Ukalawa	800199	12/01/2017
Nyave	25094292	12/01/2017
Isoliwaya	800200	12/01/2017
Kanikelele (Igoga)	800041	12/01/2017
Kanikelele (ofisini)	27349792	12/01/2017
Uheni	900064	12/01/2017
Mulunga	800182	12/01/2017
Mkondoa	750085	12/01/2017
Manyunyu	800198	12/01/2017

The metering point for the Ikondo CPA is given in the figure 7 and 8.

**Figure 7: Metering points for Jan – Mar 2017 in Ikondo CPA**

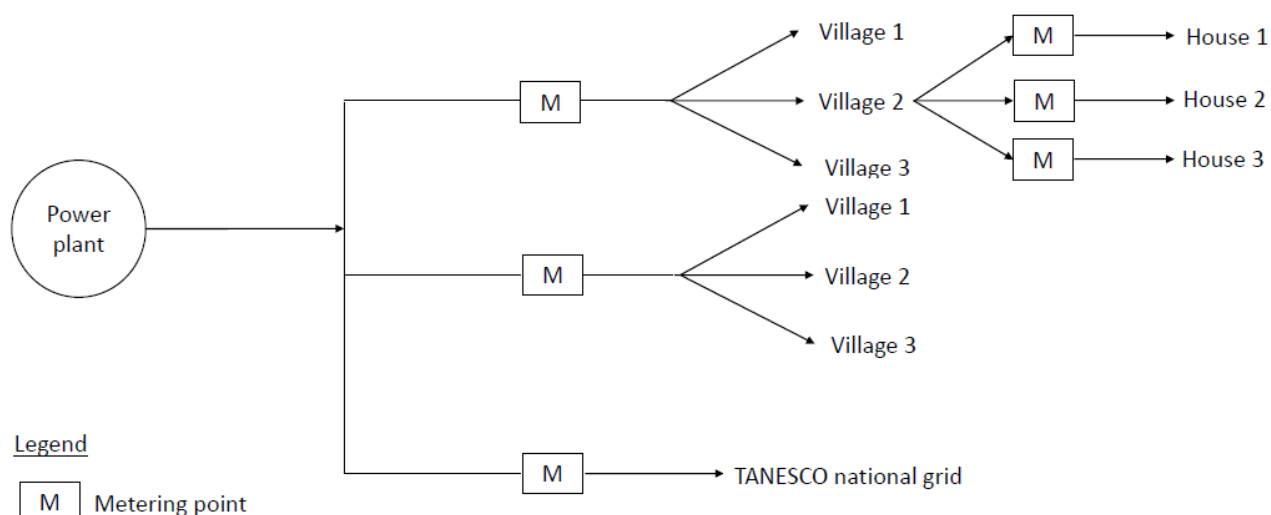


Figure 8. Metering points after April 2017 in Ikondo CPA

The technical details of the Darakuta power meters is provided in the table 19.

Table 19: Technical details of the power meters installed at the grid export point in Darakuta.

Parameter	Main meter	Check meter
Model	EDMI Mk 10E	EDMI Mk 10E
Type	Bi-directional	Bi-directional
Accuracy	0.5s	0.5s
Serial No.	215281802	215281805
Calibration date	19/01/2017	19/01/2017

Figure 9 depicts the metering points of Darakuta CPA.

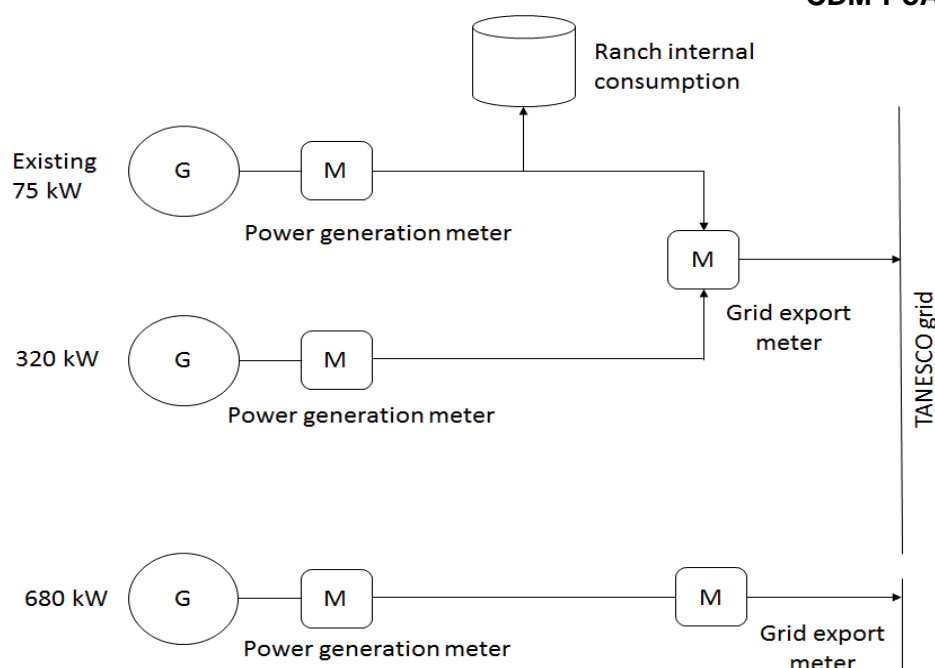


Figure 9: Metering points for Darakuta CPA

Quality assurance and quality control

QA & QC procedures for recording, maintaining and archiving data were implemented as a part of this CDM project activity. The CPA owner implemented QA & QC measures to calibrate and guarantee the accuracy of metering (for meters under his responsibility) and safety of the project operation.

Data collection, reporting, archiving and preparation for periodic verification:

Data was recorded daily by the plant operator and any data outages were recorded in an operational log and reported to the plant engineer. The Plant engineer at each project site has prepared a report consisting of the above parameters in electronic format. The soft copy of data as well as the electronic report, were forwarded to the CPA Manager, who manages the database for CPAs in line with the CDM requirements under the supervision of REA.

After the quality control, the CPA manager has sent the consolidated data collected to the REA. Being the CME, REA is responsible for the management of records and data associated with each SSC-CPA. REA maintains the overall programme database for these records. The Project Manager of the PoA is responsible for the overall programme database and maintains the records of all the CPAs under this program. The operation and management structure for the monitoring is shown in the figure 10.

To ensure the quality of the recorded data, all the personnel were trained in accordance with this monitoring plan.

If applicable, the net electricity supplied to a grid was cross checked as gross energy generation in the project activity power plant minus the auxiliary/station electricity consumption, technical losses and electricity import from the grid to the project power plant measured at the grid interface/connection used for billing purposes.

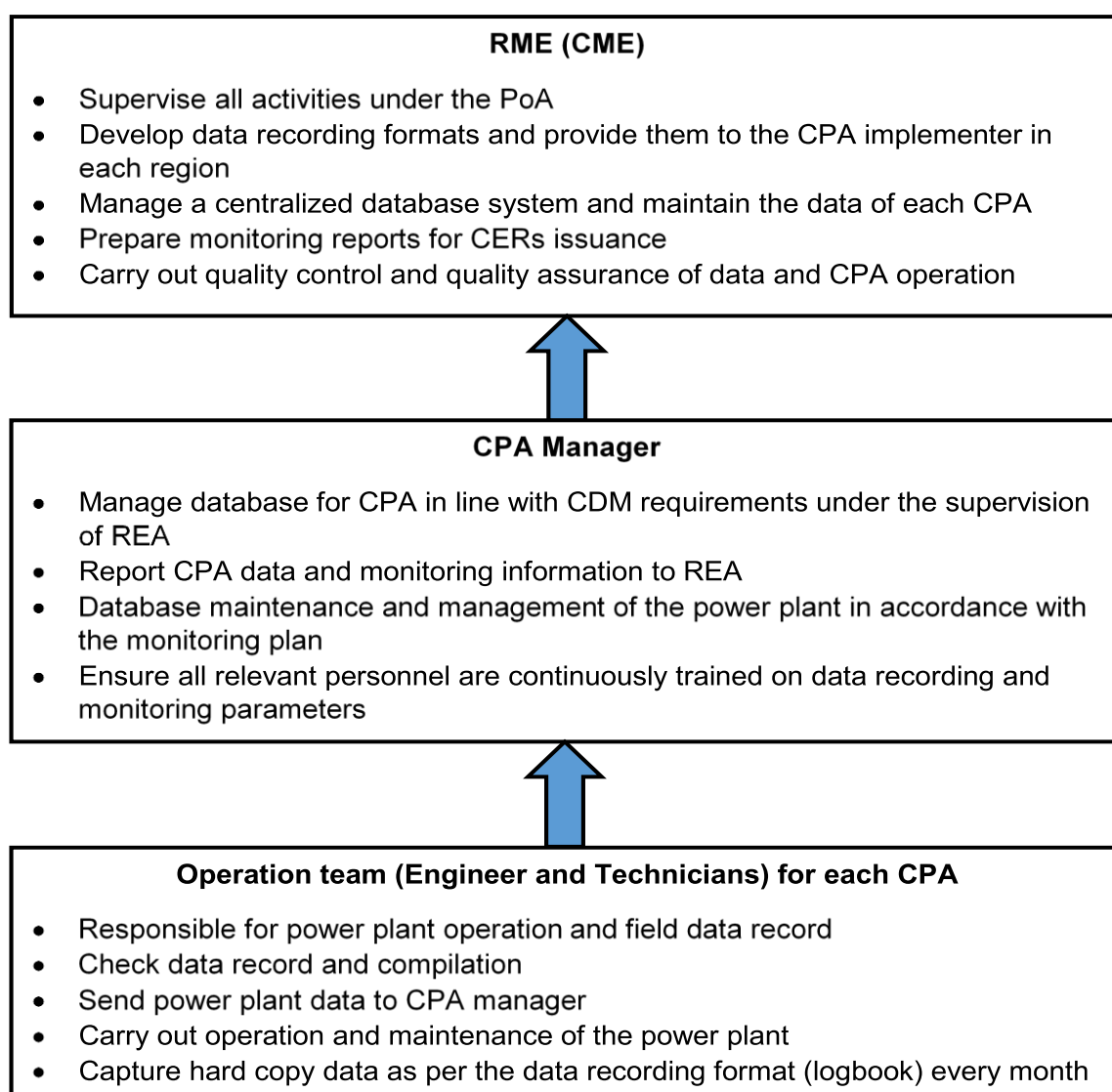


Figure 10: Operational and management structure for monitoring

SECTION E. Data and parameters

E.1. Data and parameters fixed ex ante

CPA Category 1: CPAs supplying the national grid (AMS I.D. Grid connected renewable electricity generation).

(Copy this table for each data or parameter.)

Data/Parameter	EF_{CO₂,grid,y}
Unit	tCO ₂ e/MWh.
Description	CO ₂ emission factor of the grid in year y.
Source of data	Calculated as described in part II section D.6.3 of PoA DD. Details of Tanzania national grid obtained from TANESCO.
Value(s) applied	0.530
Choice of data or measurement methods and procedures	The grid emission factor is calculated using the latest version of the “Tool to calculate the emission factor for an electricity system”. The power generation data of Tanzania national grid for years 2012-14 is used. Details of calculation are provided in part II of section D.6.3 in PoA DD.
Purpose of data/parameter	Calculation of baseline emission
Additional comments	The value is fixed ex-ante for the second crediting period.

Data/Parameter	EF_{CO₂,m,i,y}
Unit	tCO ₂ /GJ.
Description	CO ₂ emission factor of fossil fuel type i used in power unit m in year y.
Source of data	IPCC default values at the lower limit of uncertainty at a 95% confidence interval as provided in table 1.4 of Chapter 1 of Vol.2 (Energy) of the 2006 IPCC Guidelines on National GHG inventories.
Value(s) applied	Gas Oil/Diesel Oil - 0.0726 tCO ₂ /GJ. Natural Gas - 0.0543 tCO ₂ /GJ.
Choice of data or measurement methods and procedures	No data for the fuels used in Tanzania is available. Hence IPCC defaults are used. For the calculation of the Simple Adjusted OM these figures shall be updated once, at the start of each crediting period in accordance with the applicable IPCC data at that time. For the BM, these figures shall be updated once, at the start of each crediting period with the applicable IPCC data at the time.
Purpose of data/parameter	Calculation of baseline emission.
Additional comments	Note applicable.

Data/Parameter	EF_{EL,m,y}																														
Unit	tCO ₂ /MWh																														
Description	CO ₂ emission factor of power unit m considered in grid emission factor calculation in year.																														
Source of data	TANESCO																														
Value(s) applied	<table border="1"> <thead> <tr> <th>Plants</th><th>Emission Factor EF_(EL,m,y) (tCO₂/MWh)</th></tr> </thead> <tbody> <tr><td>Zuzu</td><td>0.69</td></tr> <tr><td>Tegeta Gas Plant (TGP)</td><td>0.46</td></tr> <tr><td>Ubungo Gas Plant (UGP)</td><td>0.45</td></tr> <tr><td>SONGAS UGT1&2</td><td>0.57</td></tr> <tr><td>SONGAS UGT3,4,5&6</td><td>0.54</td></tr> <tr><td>IPTL</td><td>0.70</td></tr> <tr><td>NYAKATO</td><td>0.69</td></tr> <tr><td>AGR (TG)</td><td>0.66</td></tr> <tr><td>AGR (UB)</td><td>0.66</td></tr> <tr><td>UGP 2</td><td>0.53</td></tr> <tr><td>SYMB UB GP</td><td>0.49</td></tr> <tr><td>SYMB UB JET A</td><td>0.66</td></tr> <tr><td>SYMB (AR)</td><td>0.66</td></tr> <tr><td>SYMB (DD)</td><td>0.66</td></tr> </tbody> </table>	Plants	Emission Factor EF _(EL,m,y) (tCO ₂ /MWh)	Zuzu	0.69	Tegeta Gas Plant (TGP)	0.46	Ubungo Gas Plant (UGP)	0.45	SONGAS UGT1&2	0.57	SONGAS UGT3,4,5&6	0.54	IPTL	0.70	NYAKATO	0.69	AGR (TG)	0.66	AGR (UB)	0.66	UGP 2	0.53	SYMB UB GP	0.49	SYMB UB JET A	0.66	SYMB (AR)	0.66	SYMB (DD)	0.66
Plants	Emission Factor EF _(EL,m,y) (tCO ₂ /MWh)																														
Zuzu	0.69																														
Tegeta Gas Plant (TGP)	0.46																														
Ubungo Gas Plant (UGP)	0.45																														
SONGAS UGT1&2	0.57																														
SONGAS UGT3,4,5&6	0.54																														
IPTL	0.70																														
NYAKATO	0.69																														
AGR (TG)	0.66																														
AGR (UB)	0.66																														
UGP 2	0.53																														
SYMB UB GP	0.49																														
SYMB UB JET A	0.66																														
SYMB (AR)	0.66																														
SYMB (DD)	0.66																														
Choice of data or measurement methods and procedures	Calculated based on the approach provided under Option A of the OM method, using annual electricity generation, fuel type and efficiency of each power unit,m.																														
Purpose of data/parameter	Calculation of baseline emission.																														
Additional comments	This data will be used if available from TANESCO. Otherwise, it should be calculated.																														

Data/Parameter	η_{m,y}
Unit	-
Description	Average net energy conversion efficiency of power unit m in year y.
Source of data	TANESCO and default values as per Appendix 1 of "Tool to calculate the emission factor for an electricity system", version 04.0.0

Value(s) applied	Plants	Type of fuels	Technology Used	Efficiency (%)
	Zuzu	Diesel & Industrial Oil	Open Cycle	37.8%
	Tegeta Gas Plant(TGP)	Natural Gas	Open Cycle	42.4%
	Ubungo Gas Plant(UGP)	Natural Gas	Open Cycle	43.0%
	SONGAS UGT1&2	Natural Gas	Open Cycle	34.1%
	SONGAS UGT3,4,5&6	Natural Gas	Open Cycle	36.4%
	IPTL	HFO	Open Cycle	39.0%
	NYAKATO	Diesel & Industrial Oil	Open Cycle	38.00%
	AGR(TG)	Diesel & Industrial Oil	Open Cycle	39.50%
	AGR(UB)	Diesel & Industrial Oil	Open Cycle	39.50%
	UGP 2	Natural Gas	Open Cycle	37.00%
	SYMB UB GP	Natural Gas	Open Cycle	39.50%
	SYMB UB JET A	Diesel & Industrial Oil	Open Cycle	39.50%
	SYMB {AR}	Diesel & Industrial Oil	Open Cycle	39.50%
Efficiency factor of AGR and SYMB plants are taken from Appendix 1 of the "Tool to calculate the emission factor for an electricity system" for plant built after 2000.				
Choice of data or measurement methods and procedures	Data from the Tanzanian grid company are used as available. Default values are used for the plants where data are not available.			
Purpose of data/parameter	Calculation of baseline emission			
Additional comments	Not applicable.			

Data/Parameter	EG_{m,y}
Unit	MWh.
Description	Net quantity of electricity generated and delivered to the grid by power unit m in year y.
Source of data	TANESCO.
Value(s) applied	See grid emission factor calculation spreadsheet
Choice of data or measurement methods and procedures	As per "Tool to calculate the emission factor for an electricity system" method for simple OM.
Purpose of data/parameter	Calculation of baseline emission.
Additional comments	Note applicable.

Data/Parameter	EG_{k,y}
Unit	MWh
Description	Net quantity of electricity generated and delivered to the grid by power unit k in year y (by low cost/must run power plants).
Source of data	TANESCO.
Value(s) applied	See grid emission factor calculation spreadsheet
Choice of data or measurement methods and procedures	As per "Tool to calculate the emission factor for an electricity system" method for simple OM.
Purpose of data/parameter	Calculation of baseline emission.

Additional comments	Note applicable
---------------------	-----------------

CPA Category 2: CPAs supplying to a mini-grid (AMS I.F. Renewable electricity generation for captive use and mini-grid).

Data/Parameter	EF_{CO2,y}
Unit	tCO ₂ e/MWh.
Description	CO ₂ emission factor for displacement of electricity in the minigrid and /or the captive power plant in year y.
Source of data	Table I.F.1. of AMS – I.F
Value(s) applied	0.8
Choice of data or measurement methods and procedures	The portion of electricity supplied to mini-grids replaces electricity production through diesel generators that would have been used in the absence of the project activity. As per AMS-I.F, for a mini-grid system where all the generators use exclusively fuel oil and/or diesel fuel, an emission factor for a modern diesel generating unit of the relevant capacity operating at optimal load as given in Table I.F.1 can be used. The installed capacity is larger than 200 kW. Thus, the value of 0.8 tCO ₂ e/MWh is used. This is the emission factor for a modern diesel generating unit of capacity larger than 200 kW.
Purpose of data/parameter	Calculation of baseline emission.
Additional comments	Not applicable.

For Ngombeni CPA¹⁶:

Data/parameter	MC_{Biomass}
Unit	% of water
Description	Moisture content of the biomass (wet basis)
Source of data	Power for Mafia Island: An IPP proposal utilising Renewable Energy, September 2006 and/or national/international standards and/or equipment supplier data
Value(s) applied	30 to 70%
Choice of data or measurement methods and procedures	Moisture content value is lab tested or referred from relevant national/international standards. The moisture content range specified covers all types of biomass wastes obtained from the coconut plantations.
Purpose of data	Parameter listed ex-ante as per methodology and PoA DD. This parameter is not used in emission calculations.
Additional comments	Not applicable

CPA category 3: CPAs using both AMS I.D and AMS I.F

All parameters mentioned above for the category 1 and 2 are also applicable for the category 3.

In addition to the parameters of category 3, the following parameters are applicable to Ikondo CPA.

Data/Parameter	EG_{BL,existing,y,grid}
Unit	MWh.
Description	Estimated net electrical energy that would have been produced and supplied to grid by the existing units.

¹⁶ As per revised Ngombeni CPA DD submitted to the verifying DOE (first verification). In process of issuance.

Source of data	Ikondo 80 kW power plant records for years 2010- 2015.
Value(s) applied	69
Choice of data or measurement methods and procedures	The annual average actual power produced from 80 kW unit was calculated from the historic data from 2010-2015. Similarly, the estimated electricity generation from the 80 kW unit was calculated using standard operating hours and plant load factor. The design factor (that only 28.5% of electricity generated would be exported to grid) is applied. As per methodology, the maximum of the two values, i.e., $EG_{BL,existing,y,grid}$ is considered for $EG_{BL,existing,y,grid}$.
Purpose of data/parameter	Calculation of baseline emission.
Additional comments	Not applicable.

Data/Parameter	$EG_{BL,existing,y,MG}$
Unit	MWh.
Description	Estimated net electrical energy that would have been produced and supplied to min - grid by existing units.
Source of data	Ikondo 80 kW power plant records for years 2010- 2015.
Value(s) applied	175
Choice of data or measurement methods and procedures	The annual average actual power produced from 80 kW unit was calculated from the historic data from 2010 – 2015. Similarly, the estimated electricity generation from the 80 kW unit was calculated using standard operating hour and plant load factor. The design factor that only 71.5% of electricity generated would be exported to grid is applied. As per methodology, the maximum of the two values, i.e. $EG_{estimated,y}$ is considered for $EG_{BL,existing,y,grid}$.
Purpose of data/parameter	Calculation of baseline emission.
Additional comments	Not applicable.

E.2. Data and parameters monitored

Category 1 : CPAs supplying to the national grid (AMS I.D. Grid connected renewable electricity generation).

(Copy this table for each data or parameter.)

Data/Parameter	EG _{actual,y} /EG _{BL,y} (category)					
Unit	MWh/Year					
Description	Quantity of net electricity supplied to the national grid in year y.					
Measured/calculated/ Default	The data were measured and then calculated to obtain net electricity by subtracting the auxiliary/station electricity consumption, technical losses and the electricity import from the grid to the project power plant measured at the grid interface/connection used for billing purposes.					
Source of data	Measured by energy meters					
Value(s) of monitored parameter	<table><tr><td>CPA</td><td>Power supplied to the grid (MWh)</td></tr><tr><td>Darakuta</td><td>63.97</td></tr></table>		CPA	Power supplied to the grid (MWh)	Darakuta	63.97
CPA	Power supplied to the grid (MWh)					
Darakuta	63.97					
Monitoring equipment	Bidirectional energy meters.					
Measuring/reading/ recording frequency	Continuous monitoring, daily measurement for power generated at the plant and monthly recording for power supplied to TANESCO national grid.					

Calculation method (if applicable)	<p>Measurements are taken using energy meters. Bidirectional meters are installed so that the electricity supplied by the grid to the project or to the communities is not included in the calculation of ERs.</p> <p>Measurement results are cross checked with records for sold / purchased electricity (e.g., invoices/receipts).</p> <p>The net electricity export/supplied to a grid is the difference between the measured quantities of the grid electricity export and the import. Cross check is done on net electricity supplied to a grid as the gross energy generation in the project activity power plant minus the auxiliary/station electricity consumption, technical losses and the electricity import from the grid to the project power plant measured at the grid interface/connection used for billing purposes.</p>
QA/QC procedures	<p>The device was calibrated and tested as per the instructions (schedules, procedures) for QA of the technology provider and EWURA's standard.</p> <p>There was strict compliance with the maintenance schedule recommended by the technology provider and EWURA. The quality control was ensured by EWURA's SSPA that mandates monthly readings, with rated error no greater than 0.5%.</p> <p>Quality control and assurance was achieved through a monthly check of the monitoring log sheet, which was signed by plant staff to acknowledge that the parameters are correct.</p>
Purpose of data/parameter	Calculation of baseline emission.
Additional comments	The data will be kept in reserve for two years after verification.

CPA Category 2: CPAs supplying to a mini-grid alone (AMS-I.F. Renewable electricity generation for captive use and mini-grid).

Data/Parameter	EG _{BL,y}										
Unit	MWh/Year										
Description	Quantity of net electricity displaced in year y.										
Measured/calculated/Default	For electricity supplied to the communities, the data were measured by the energy meters. For the electricity supplied to TANESCO minigrid the data were measured and then calculated by subtracting the auxiliary/station electricity consumption, technical losses and the electricity import from the TANESCO mini grid to the project power plant measured at the TANESCO mini grid interface/connection used for billing purposes.										
Source of data	Measured by energy meters										
Value(s) of monitored parameter	<p><u>To TANESCO mini-grid:</u></p> <table border="1"> <thead> <tr> <th>CPA</th><th>Power supplied to the mini-grid (MWh/year)</th></tr> </thead> <tbody> <tr> <td>Mbinga</td><td>2,626.414</td></tr> <tr> <td>Ngombeni</td><td>0</td></tr> </tbody> </table> <p><u>To isolated mini-grid:</u></p> <table border="1"> <thead> <tr> <th>CPA</th><th>Power supplied to the mini-grid (MWh/year)</th></tr> </thead> <tbody> <tr> <td>Mbinga</td><td>59.547</td></tr> </tbody> </table>	CPA	Power supplied to the mini-grid (MWh/year)	Mbinga	2,626.414	Ngombeni	0	CPA	Power supplied to the mini-grid (MWh/year)	Mbinga	59.547
CPA	Power supplied to the mini-grid (MWh/year)										
Mbinga	2,626.414										
Ngombeni	0										
CPA	Power supplied to the mini-grid (MWh/year)										
Mbinga	59.547										
Monitoring equipment	Unidirectional and bidirectional energy meters.										

Measuring/reading/recording frequency	Continuous monitoring, daily measurement done for the electricity generated at the plant and monthly recording done for power supplied to TANESCO mini grid and communities. The data will be held in reserve for the two years after the verification.
Calculation method (if applicable)	<p>Measurements are taken using energy meters. Bidirectional meters are installed so that the electricity supplied by the grid to the project or to the communities is not included in the calculation of ERs.</p> <p>Measurement results are cross checked with records for sold / purchased electricity (e.g., invoices/receipts).</p> <p>The net electricity export/supplied to a grid is the difference between the measured quantities of the grid electricity export and the import. Cross check is done on net electricity supplied to a grid as the gross energy generation in the project activity power plant minus the auxiliary/station electricity consumption, technical losses and the electricity import from the grid to the project power plant measured at the grid interface/connection used for billing purposes.</p>
QA/QC procedures	<p>The device was calibrated and tested as per the instructions (schedules, procedures) for QA of the technology provider and EWURA's standard.</p> <p>There was strict compliance with the maintenance schedule recommended by the technology provider and EWURA. The quality control was ensured by EWURA's SSPA that mandates monthly readings, with rated error no greater than 0.5%.</p> <p>Quality control and assurance was achieved through a monthly check of the monitoring log sheet, which was signed by plant staff to acknowledge that the parameters are correct.</p>
Purpose of data/parameter	Calculation of baseline emission.
Additional comments	The data will be kept in reserve for two years after the crediting period.

For Ngombeni CPA:

Data/parameter	Biomass Consumption
Unit	Tonnes/year
Description	Quantity of biomass consumed in year y
Measured/calculated/ default	Measured
Source of data	The fuel consumed by the power plant will be measured at the fuel delivery system or taken from the plant records and log books.
Value(s) of monitored parameter	0
Monitoring equipment	Weigh bridge
Measuring/reading/recording frequency	The quantity of biomass was measured in batches.
Calculation method (if applicable)	Use mass or volume based measurements. If more than one type of biomass fuel was consumed, each was monitored separately. During the monitoring period, only single type of biomass, i.e., the biomass residue from coconut plantations was used in the CPA.
QA/QC procedures	<p>Quality control and assurance was achieved through a daily check of the monitoring log sheet, which was signed by plant staff to acknowledge that the parameters are correct.</p> <p>The weigh bridge was calibrated on 11/02/2017 and the accuracy was assured to be 0.05%.</p>

Purpose of data	<p>Cross-check of the measurements with an annual energy balance was done based on purchased quantities (e.g., with sales/receipts) and stock changes. The consistency of measurements ex post was checked with annual data on energy generation, biomass used and the efficiency of energy generation as determined ex ante. Here the amount of biomass brought into the power plant area is considered to be consumed for the power generation.</p> <p>The cross check showed that energy generated was not more than energy made available from biomass consumption reported during same period.</p>
Additional comments	Parameter listed as per methodology and PoA DD. This parameter is not used in the emission calculation.

Data/parameter	NCV _{Biomass}
Unit	MJ/kg
Description	Net calorific value of biomass type k
Measured/calculated/default	Calculated
Source of data	Lab reports or standard sources such as IPCC
Value(s) of monitored parameter	0
Monitoring equipment	Measurement in the laboratories according to relevant national/international standards. NCV was measured based on wet biomass basis
Measuring/reading/recording frequency	Determined once in the first year or when a new biomass type is used and the value can be used for the rest of the crediting period.
Calculation method (if applicable)	Not applicable. NCV value is lab tested or referred from relevant national/international standards.
QA/QC procedures	Consistency of the measurements were checked by comparing the measurement results with relevant data sources (e.g., values in the literature, values used in the national GHG inventory, etc.) and default values by the IPCC.
Purpose of data	Parameter listed as per methodology and PoA DD. This parameter is not used in the emission calculations
Additional comments	The data will be archived for two years after the crediting period.

CPA Category 3: CPAs supplying to both the national grid and the mini grid (TANESCO/Isolated).

Data/Parameter	$EG_{actual,y}/EG_{BL,y}$ (Category 1)
Unit	MWh/Year
Description	Quantity of net electricity supplied to the national grid in year y.
Measured/calculated/Default	<p>Measurements were taken using energy meters. Bidirectional meters were installed so that any electricity supplied by the grid to the project or to the project /to the community is not included in the ER calculation.</p> <p>Measurement results are checked with records for sold/purchased electricity (e.g., invoices/receipts).</p> <p>The net electricity exported/supplied to a grid is the difference between the measured quantities of the grid electricity export and the import. The net electricity supplied to a grid are cross checked with the gross energy generation in the project activity power plant minus the auxiliary/station electricity consumption, technical losses and electricity import from the grid to the project power plant measured at the grid interface/connection used for billing purposes.</p>
Source of data	Measured by energy meters.

Value(s) of monitored parameter		
	CPA	Power supplied to the grid (MWh/year)
	Tulila ¹⁷	0
	Ikondo	305
	Yovi	4,859
Monitoring equipment	Bidirectional energy meters.	
Measuring/reading/recording frequency	Continuous monitoring, daily measurement done for the electricity generated at the plant and monthly recording done for electricity supplied to TANESCO national grid. The data will be held in reserve for the two years after the verification.	
Calculation method (if applicable)	<p>Measurements are taken using energy meters. Bidirectional meters are installed so that the electricity supplied by the grid to the project or to the communities is not included in the calculation of ERs.</p> <p>Measurement results are cross checked with records for sold / purchased electricity (e.g., invoices/receipts).</p> <p>The net electricity export/supplied to a grid is the difference between the measured quantities of the grid electricity export and the import. Cross check is done on net electricity supplied to a grid as the gross energy generation in the project activity power plant minus the auxiliary/station electricity consumption, technical losses and the electricity import from the grid to the project power plant measured at the grid interface/connection used for billing purposes.</p> <p><u>For Ikondo:</u></p> <p>The 380 kW unit and 80 kW are connected and export power through single energy meter only. The power generation meters installed next to both the generators are instantaneous meters only and the power generation from individual unit is not available. Because of this, the conservative estimation approach as described in the registered CPA DD is used in CER estimation during this monitoring period.</p>	
QA/QC procedures	<p>The device was calibrated and/or tested as per the instructions (schedules, procedures) for QA of the technology provider and EWURA's standard.</p> <p>There was strict compliance with the maintenance schedule recommended by the technology provider and EWURA. The quality control was ensured by EWURA's SSPA that mandates monthly readings, with rated error no greater than 0.5%.</p> <p>Quality control and assurance was achieved through a monthly check of the monitoring log sheet, which was signed by plant staff to acknowledge that the parameters are correct.</p>	
Purpose of data/parameter	Calculation of baseline emission.	
Additional comments	The data will be kept in reserve for two years after the crediting period.	

Data/Parameter	EG _{BL,y} .
Unit	MWh/Year
Description	Quantity of net electricity displaced in year y.

¹⁷ Currently, Tulila CPA is supplying power only to mini grid and national grid is not yet established. Therefore, during this monitoring period there is no supply to the national grid.

Measured/calculated/ Default	For electricity supplied to the communities, the data were measured by the energy meters. For the electricity supplied to TANESCO minigrid the data were measured and then calculated by subtracting the auxiliary/station electricity consumption, technical losses and the electricity import from the TANESCO mini grid to the project power plant measured at the TANESCO mini grid interface/connection used for billing purposes.								
Source of data	Measured by energy meters								
Value(s) of monitored parameter	<p><u>To TANESCO mini-grid</u></p> <table border="1"> <tr> <td>CPA</td><td>Power supplied to TANESCO mini-grid (MWh/year)</td></tr> <tr> <td>Tulila</td><td>18,384</td></tr> </table> <p><u>To Isolated mini-grid</u></p> <table border="1"> <tr> <td>CPA</td><td>Power supplied to isolated mini-grid (MWh/year)</td></tr> <tr> <td>Ikondo</td><td>330</td></tr> </table>	CPA	Power supplied to TANESCO mini-grid (MWh/year)	Tulila	18,384	CPA	Power supplied to isolated mini-grid (MWh/year)	Ikondo	330
CPA	Power supplied to TANESCO mini-grid (MWh/year)								
Tulila	18,384								
CPA	Power supplied to isolated mini-grid (MWh/year)								
Ikondo	330								
Monitoring equipment	Unidirectional and bidirectional energy meters.								
Measuring/reading/recordin g frequency	Continuous monitoring, daily measurement done for the electricity generated at the plant and monthly recording done for power supplied to TANESCO mini grid and communities. The data will be held in reserve for the two years after the verification.								
Calculation method (if applicable)	<p>Measurements are taken using energy meters. Bidirectional meters are installed so that the electricity supplied by TANESCO min grid to the project or to the communities is not included in the calculation of ERs.</p> <p>Measurement results are cross checked with records for sold / purchased electricity (e.g., invoices/receipts).</p> <p>The net electricity export/supplied to a grid is the difference between the measured quantities of the grid electricity export and the import. Cross check is done on net electricity supplied to a grid as the gross energy generation in the project activity power plant minus the auxiliary/station electricity consumption, technical losses and the electricity import from the grid to the project power plant measured at the grid interface/connection used for billing purposes.</p> <p><u>For Ikondo:</u></p> <p>The 380 kW unit and 80 kW are connected and export power through single energy meter only. The power generation meters installed next to both the generators are instantaneous meters only and the power generation from individual unit is not available. Because of this, the conservative estimation approach as described in the registered CPA DD is used in CER estimation during this monitoring period.</p>								
QA/QC procedures	<p>The device was calibrated and tested as per the instructions (schedules, procedures) for QA of the technology provider and EWURA's standard.</p> <p>There was strict compliance with the maintenance schedule recommended by the technology provider and EWURA. The quality control was ensured by EWURA's SSPA that mandates monthly readings, with rated error no greater than 0.5%.</p> <p>Quality control and assurance was achieved through a monthly check of the monitoring log sheet, which was signed by plant staff to acknowledge that the parameters are correct.</p>								
Purpose of data/parameter	Calculation of baseline emission.								
Additional comments	The data will be kept in reserve for two years after verification.								

E.3. Implementation of sampling plan

Not applicable

SECTION F. Calculation of emission reductions or net anthropogenic removals**F.1. Calculation of baseline emissions or baseline net removals.**

CPA category 1: For electricity supplied to the national grid (AMS I.D. Grid connected renewable electricity generation).

For the part of electricity generated that was fed to the national grid, the CPA uses the AMS-I.D. (Version 17) and relevant equations.

Darakuta:

Darakuta hydro power plant is a capacity addition project to the existing 75kW micro hydro power plant and supplies power to the national grid.

As the CPA is a renewable energy based capacity addition to an existing renewable energy power plant, the baseline emissions are calculated as per “*For capacity addition with renewable energy units other than photovoltaic, wind plants*” approach provided in the registered PoA DD, version 08 page 42.

The baseline emissions from the electricity supply to the grid are calculated as,

$$BE_{Add,CO_2,y,grid} = (EG_{PJ,add,y,grid} - EG_{BL,existing,y,grid}) * EFCO_2$$

Where,

$EG_{PJ,add,y,grid}$ = The total net electrical energy supplied to a grid in year y by all units, existing and new project units; (MWh)

$EG_{BL,existing,y,grid}$ = The estimated net electrical energy that would have been produced and supplied to a grid by existing units (installed before the project activity) in year y in the absence of the project activity; (MWh)

Where,

$$EG_{BL,existing,y,grid} = MAX (EG_{actual,y} \text{ or } EG_{estimated,y}) \text{ until } DATE_{baselinecapacityaddition}$$

and

$$EG_{BL,existing,y,grid} \text{ is } 0 \text{ on/after } DATE_{baselinecapacityaddition}$$

Where,

$EG_{actual,y}$ = The actual, measured net electrical energy produced and supplied to the grid by the existing units in year y (MWh).

$EG_{estimated,y}$ = The estimated net electrical energy produced and supplied to the grid by the existing units in year y (MWh).

The existing power plant was used for internal purpose and there was no monitoring of the power generation so far. Due to this, there is no historic data for the existing plant to calculate parameter $EG_{actual,y}$. The annual estimated electricity produced and supplied to grid ($EG_{estimated,y}$) from the 75 kW

unit was calculated as 296 MWh using standard operating hours and plant load factor. This is conservative as some part of this will be used for internal consumption also.

Also, the power from the existing 75 kW (H1) was also not recorded. The normal lifetime of hydro power plants is 20 years. The date of baseline capacity additions is 2035. Therefore, this CPA will not claim any CERs after 31/12/2034.

The details of net power supplied to the national grid is given in table 20.

Table 20: Net electricity exported to grid from Darakuta

Time period		Electricity supplied to TANESCO grid	Electricity imported from TANESCO grid	Net electricity supplied EG _{facility,y}
From	To	(MWh)	(MWh)	(MWh)
		A	B	C=A-B
01/01/2017	31/12/2017	-	-	-
01/02/2017	28/02/2017	-	-	-
01/03/2017	31/03/2017	-	-	-
01/04/2017	30/04/2017	-	-	-
01/05/2017	31/05/2017	-	-	-
01/06/2017	30/06/2017	-	-	-
01/07/2017	31/07/2017	-	-	-
01/08/2017	31/08/2017	-	-	-
01/09/2017	30/09/2017	-	-	-
01/10/2017	31/10/2017	-	-	-
01/11/2017	30/11/2017	-	-	-
12/12/2017	31/12/2017	63.97	0.00	63.97
Total		63.97	0.00	63.97

CPA Category 2: For the CPAs supplying to a mini-grid (AMS-I.F. Renewable electricity generation for captive use and mini-grid).

For the electricity fed into the isolated/TANESCO mini-grids, the CPA should use the methodology, AMS-I.F. (Version 02) and the relevant equations. Moreover, one of the CPAs under this PoA is capacity addition project and the rest are new power plants (greenfield projects).

Baseline emissions

For new power plants at the site where there was no renewable energy power plant operating prior to the implementation of the project activity (greenfield plant):

$$BE_{y(Category2)} = EG_{BL,y(Category2)} \times EF_{CO2,y}$$

Where:

$BE_{y(Category2)}$ = Baseline emissions in year y (tCO₂) for mini-grids

$EG_{BL,y(Category2)}$ = Quantity of net electricity supplied to the mini-grid as a result of the implementation of the CDM project activity in year y (MWh)

$EF_{CO2,y}$ = CO₂ emission factor (tCO₂/MWh)

For the mini-grids, the emission factor is as of a modern diesel generating unit of the relevant capacity operating at optimal load as given in Table I.F.1. of AMS-I.F.

Mbinga:

Mbinga CPA is a greenfield power plant and supplies power to both TANESCO mini grid and isolated mini grid (villages).

The details of net power supplied to TANESCO mini grid is given in table 21.

Table 21 : Net electricity exported to mini-grid from Mbinga

Time period		Electricity supplied to TANESCO mini-grid	Electricity supplied to isolated mini grid (MWh)	Electricity imported from TANESCO mini-grid	Net electricity supplied $EG_{facility,y}$
From	To	(MWh)	(MWh)	(MWh)	(MWh)
		A	B	C	D=A+B-C
01/01/2017	31/01/2017	118.158	3.623	0.000	121.781
01/02/2017	28/02/2017	188.477	3.963	0.000	192.440
01/03/2017	31/03/2017	256.207	4.656	0.000	260.863
01/04/2017	30/04/2017	263.049	4.335	0.081	267.303
01/05/2017	31/05/2017	270.100	4.791	0.149	274.742
01/06/2017	30/06/2017	262.837	4.918	0.030	267.725
01/07/2017	31/07/2017	268.618	5.450	0.100	273.968
01/08/2017	31/08/2017	265.078	5.693	0.063	270.708
01/09/2017	30/09/2017	213.238	6.229	0.530	218.937
01/10/2017	31/10/2017	165.302	5.887	1.664	169.525
01/11/2017	30/11/2017	132.613	5.135	2.244	135.504
01/12/2017	31/12/2017	222.737	4.868	0.308	227.297
Total		2626.414	59.547	5.169	2680.793

Ngombeni:

There was no power generation from this CPA during this monitoring period.

CPA Category 3: For CPAs supplying to both the national grid and the mini-grid (AMS-I.D. and AMS-I.F.)

All the procedures for baseline estimations of Category 1 and 2 (Greenfield/capacity addition projects) are also applicable to Category 3.

Yovi:

Yovi small power plant is a green field project and supplies power to national grid and it is expected to connect to the minigrid by the end of 2018.

Baseline emissions

As the Yovi CPA is a new power plant at the site where there was no renewable energy power plant operating prior to the implementation of the project activity (greenfield plant), the baseline emissions are calculated as follows:

$$BE_{y, (Category 1)} = EG_{BL,y, (Category 1)} * EF_{CO2, grid, y}$$

Where:

$BE_{y, (Category 1)}$ = Baseline emissions in year y (tCO₂) for electricity supplied to the national grid

$EG_{BL,y, (Category 1)}$ = Quantity of net electricity supplied to the national grid as a result of the implementation of the CDM project activity in year y (MWh).

$EF_{CO2, grid, y}$ = CO₂ emission factor of the grid in year y (tCO₂/MWh).

The details of net electricity exported to the national grid is given in table 22.

Table 22: Net electricity exported to grid from Yovi

Time period		Electricity exported to grid	Electricity imported from grid	Net electricity exported EG _{facility,y}
From	To	(MWh)	(MWh)	(MWh)
		A	B	C=A-B
01/01/2017	31/12/2017	208.795	0	208.795
01/02/2017	28/02/2017	318.895	0	318.895
01/03/2017	31/03/2017	540.624	0	540.624
01/04/2017	30/04/2017	556.202	0	556.202
01/05/2017	31/05/2017	581.617	0	581.617
01/06/2017	30/06/2017	481.918	0.006	481.912

Time period		Electricity exported to grid	Electricity imported from grid	Net electricity exported EG _{facility,y}
From	To	(MWh)	(MWh)	(MWh)
		A	B	C=A-B
01/07/2017	31/07/2017	203.490	0	203.490
01/08/2017	31/08/2017	554.843	0	554.843
01/09/2017	30/09/2017	537.949	0	537.949
01/10/2017	31/10/2017	278.334	0	278.334
01/11/2017	30/11/2017	41.172	0	41.172
01/12/2017	31/12/2017	555.267	0	555.267
Total		4859.106	0.006	4,859.1

Tulila:

Tulila hydroelectric power plant is a green field project and supplies power to the national grid as well as to the mini-grid. Currently, Tulila power plant is supplying power only to the mini-grid and it is expected to connect to the national grid by end of 2018¹⁸ when the national grid extends to that location. The details of the net electricity supplied to TANESCO mini grid is given in the table 23.

Table 23: Net electricity exported to the mini-grid from Tulila

Time period		Electricity supplied to TANESCO mini-grid	Electricity imported from TANESCO mini-grid	Net electricity supplied EG _{facility,y}
From	To	(MWh)	(MWh)	(MWh)
		A	B	C=A-B
01/01/2017	31/01/2017	1,389	0	1,389
01/02/2017	28/02/2017	1,749	0	1,749
01/03/2017	31/03/2017	1,814	0	1,814
01/04/2017	30/04/2017	1,653	0	1,653
01/05/2017	31/05/2017	2,076	0	2,076
01/06/2017	30/06/2017	2,031	0	2,031
01/07/2017	31/07/2017	1,911	0	1,911

¹⁸ Tulila CPA-DD, Version 2 dated 26/10/2015

Time period		Electricity supplied to TANESCO mini-grid	Electricity imported from TANESCO mini-grid	Net electricity supplied $EG_{\text{facility},y}$
From	To	(MWh)	(MWh)	(MWh)
		A	B	C=A-B
01/08/2017	31/08/2017	1,667	0	1,667
01/09/2017	30/09/2017	1,035	0	1,035
01/10/2017	31/10/2017	889	0	889
01/11/2017	30/11/2017	606	0	606
01/12/2017	31/12/2017	1,565	0	1,565
Total		18,385	0	18,385

Ikondo:

Ikondo micro hydro power plant is a capacity addition project to the existing 80kW micro hydro power plant and supplies power to the national grid as well as to the isolated mini-grid.

As the CPA is a renewable energy based capacity addition to an existing renewable energy power plant, the baseline emissions are calculated as per “*For capacity addition with renewable energy units other than photovoltaic, wind plants*” approach provided in the registered PoA DD, version 08 page 42.

a) For power supplied to the TANESCO grid:

The baseline emissions from the electricity supply to the grid are calculated as,

$$BE_{\text{Add},\text{co2},y,\text{grid}} = (EG_{\text{PJ},\text{add},y,\text{grid}} - EG_{\text{BL},\text{existing},y,\text{grid}}) * EF_{\text{co2}}$$

Where,

$EG_{\text{PJ},\text{add},y,\text{grid}}$ = The total net electrical energy supplied to a grid in year y by all units, existing and new project units; (MWh)

$EG_{\text{BL},\text{existing},y,\text{grid}}$ = The estimated net electrical energy that would have been produced and supplied to a grid by existing units (installed before the project activity) in year y in the absence of the project activity; (MWh)

Where,

$$EG_{\text{BL},\text{existing},y,\text{grid}} = \text{MAX} (EG_{\text{actual},y} \text{ or } EG_{\text{estimated},y}) \text{ until } DATE_{\text{baselinecapacityaddition}}$$

and

$$EG_{\text{BL},\text{existing},y,\text{grid}} \text{ is } 0 \text{ on/after } DATE_{\text{baselinecapacityaddition}}$$

Where,

- $EG_{actual,y}$ = The actual, measured net electrical energy produced and supplied to the grid by the existing units in year y (MWh).
 $EG_{estimated,y}$ = The estimated net electrical energy produced and supplied to the grid by the existing units in year y (MWh).

The annual average actual power produced from the 80 kW unit was calculated using the historic data from 2010-2015. Similarly, the estimated electricity generation from the 80 kW unit was calculated using the standard operating hours and the plant load factor. The values of power supply considering the grid export is given in the table 24.

Table 24: The value of power supply considering export to the grid.

Parameter	Total estimated (MWh)	Percentage supply to grid	Value to be considered (MWh)
$EG_{actual,y}$	79	28.5	22
$EG_{estimated,y}$	245		69

As per methodology, the maximum of the two values, i.e., $EG_{estimated,y}$ is considered for $EG_{BL,existing,y,grid}$ = 69 MWh.

The existing 80 kW unit was installed in 2005. Considering the standard operating life of 25 years for hydro power plants, the $DATE_{baselinecapacityaddition}$ for existing 80 kW plant is 31/12/2024.

During the monitoring period, a separate energy meter was not installed to measure the power generation from the 80 kW unit. So as a conservative measure, the estimated power supply from 80 kW unit to the grid, i.e., 69 MWh as per CPA DD is considered. Net electricity export to grid from Ikondo is given in table 25.

Table 25: Net electricity exported to grid from Ikondo

Time period		Electricity supplied to TANESCO mini-grid	Electricity imported from TANESCO mini-grid	Net electricity supplied $EG_{facility,y}$
From	To	(MWh)	(MWh)	(MWh)
		A	B	C=A-B
01/01/2017	31/01/2017	35.09	5.750 ¹⁹	29.34
01/02/2017	28/02/2017	5.56	5.750	0.00
01/03/2017	31/03/2017	46.42	5.750	40.67
01/04/2017	30/04/2017	44.78	5.750	39.03
01/05/2017	31/05/2017	66.46	5.750	60.71

¹⁹ 69 MWh for 12 months. For one month = $69/12 = 5.75$ MWh

Time period		Electricity supplied to TANESCO mini-grid	Electricity imported from TANESCO mini-grid	Net electricity supplied $EG_{\text{facility},y}$
From	To	(MWh)	(MWh)	(MWh)
		A	B	C=A-B
01/06/2017	30/06/2017	43.03	5.750	37.28
01/07/2017	31/07/2017	40.92	5.750	35.17
01/08/2017	31/08/2017	46.76	5.750	41.01
01/09/2017	30/09/2017	27.67	5.750	21.92
01/10/2017	31/10/2017	0.000	0.000	0.00
01/11/2017	30/11/2017	0.000	0.000	0.00
01/12/2017	31/12/2017	0.000	0.000	0.00
Total		356.69	51.750	305.00

b) For power supplied to the mini-grid

The baseline emissions from the electricity supplied to mini-grid are calculated as,

$$BE_{Add,co2,y,MG} = (EG_{PJ,add,y,MG} - EG_{BL,existing,y,MG}) * EF_{co2}$$

Where,

$EG_{PJ,add,y,MG}$ = The total net electrical energy supplied to a mini-grid in year y by all units, existing and new project units; (MWh)

$EG_{BL,existing,y,MG}$ = The estimated net electrical energy that would have been produced and supplied to a mini-grid by existing units (installed before the project activity) in year y in the absence of the project activity; (MWh)

Where,

$$EG_{BL,existing,y,MG} = \text{MAX} (EG_{actual,y} \text{ or } EG_{estimated,y}) \text{ until } DATE_{baselinecapacityaddition}$$

and

$$EG_{BL,existing,y,MG} \text{ is 0 on/after } DATE_{baselinecapacityaddition}$$

Where,

$EG_{actual,y}$ = The actual, measured net electrical energy produced and supplied to the mini-grid by the existing units in year y (MWh)

$EG_{estimated,y}$ = The estimated net electrical energy produced and supplied to the mini-grid by the existing units in year y (MWh)

The annual average actual power produced from 80 kW unit was calculated from the historic data from 2010-2015. Similarly, the estimated electricity generation from the 80 kW unit was calculated

using standard operating hours and plant load factor. The values of power supply considering mini-grid export are given in the table 26:

Table 26: The value of power supply considering export to the grid.

Parameter	Total estimated (MWh)	Percentage supply to mini-grid	Value be considered (MWh)
$EG_{actual,y}$	79	71.50	57
$EG_{estimated,y}$	245		175

As per methodology, the maximum of the two values, i.e., $EG_{estimated,y}$ is considered for $EG_{BL,existing,y,MG} = 175$ MWh.

During the monitoring period, a separate energy meter was not installed to measure the power generation from the 80 kW unit. So as conservative measure, the estimated power supply from 80 kW unit to mini-grid i.e., 175 MWh as per CPA DD is considered.

The details of net electricity exported to mini-grid is given in the table 27.

Table 27: Net electricity exported to mini-grid from Ikondo

Time period		Electricity exported to mini-grid	Electricity generation from 80 kW unit	Net electricity generation $EG_{facility,y}$
From	To	(MWh)	(MWh)	(MWh)
		A	H	C=A - H
01/01/2017	31/01/2017	33.915	14.583	19.332
01/02/2017	28/02/2017	28.171	14.583	13.587
01/03/2017	31/03/2017	52.685	14.583	38.101
01/04/2017	30/04/2017	58.455	14.583	43.872
01/05/2017	31/05/2017	37.017	14.583	22.434
01/06/2017	30/06/2017	44.791	14.583	30.208
01/07/2017	31/07/2017	43.578	14.583	28.995
01/08/2017	31/08/2017	45.322	14.583	30.739
01/09/2017	30/09/2017	41.329	14.583	26.746
01/10/2017	31/10/2017	40.360	14.583	25.777
01/11/2017	30/11/2017	41.389	14.583	26.806
01/12/2017	31/12/2017	38.240	14.583	23.657

Time period		Electricity exported to mini-grid	Electricity generation from 80 kW unit	Net electricity generation $EG_{\text{facility},y}$
From	To	(MWh)	(MWh)	(MWh)
		A	H	C=A - H
Total		505.251	175.000	330.000

The baseline emissions for each of the CPA based on the power supply to the grid or mini-grid is summarised as in table 28.

Table 28. Baseline emissions from the CPAs

Time period		Net electricity generation EG _{facility,y}	Grid emission factor	Baseline Emission BE _y
From	To	(MWh)	(tCO ₂ /MWh)	(tCO ₂)
		C	D	E = C*D
Mbinga				
01/01/2017	31/12/2017	2,680	0.80	2,144
Yovi				
01/01/2017	31/12/2017	4,859	0.53	2,575
Tulila				
01/01/2017	31/12/2017	18,384	0.80	14,707
Ngombeni				
01/01/2017	31/12/2017	0	0	0
Ikondo				
01/01/2017	31/12/2017	305	0.53	161161
01/01/2017	31/12/2017	330	0.80	264
Darakuta				
12/12/2017	31/12/2017	63	0.53	33
Total baseline emissions				19,884

F.2. Calculation of project emissions or actual net removals

All the CPAs generating power from hydro sources are run-of-the-river type power projects. Hence, the project emission is considered as zero.

$$PE_{y(Category1)} = 0$$

F.3. Calculation of leakage emissions**(i) CPA Category 1: For electricity supplied to the national grid (AMS-I.D. Grid connected renewable electricity generation)**

As per AMS-I.D., Version 17, leakage has to be considered, if there is any energy generating equipment transfer from another activity. The Yovi CPA under this PoA did not involve any transfer of equipment from another project activity. This CPA uses only the newly procured equipment. Hence, the leakage emission (LE_y) due to equipment transfer was not considered for the CPA.

$$LE_{y(Category1)} = 0$$

(ii) CPA Category 2: For CPAs supplying a mini-grid (AMS-I.F. Renewable electricity generation for captive use and mini-grid)

As per AMS-I.F leakage has to be considered if there is any energy generating equipment transfer from another activity. The Mbinga CPA under this PoA did not involve any transfer of equipment from another project activity. Hence, the leakage emission was not considered for the CPAs under this PoA.

(iii) CPA Category 3: For CPAs supplying both national and mini-grid (AMS-I.D and AMS-I.F)

As per AMS-I.D and AMS-I.F leakage has to be considered, if there is any energy generating equipment transfer from another activity. The CPAs (Mbinga, Tulila, Yovi, Ngombeni, Ikondo and Darakuta) under this PoA were not involved any transfer of equipment from another activity. All systems having comprised only newly procured equipment. Hence, the leakage emission due to equipment transfer was not considered for the CPAs under this PoA.

$$LE_{y(Category3)} = 0$$

F.4. Calculation of emission reductions or net anthropogenic removals

CPA UNFCCC reference number	Baseline GHG emissions or baseline net GHG removals (t CO ₂ e)	Project GHG emissions or actual net GHG removals (t CO ₂ e)	Leakage GHG emissions (t CO ₂ e)	GHG emission reductions or net anthropogenic GHG removals (t CO ₂ e)		
				Before 01/01/2013	From 01/01/2013	Total amount
9904-0003	2,144	0	0	0	2,144	2,144
9904-0004	2,575	0	0	0	2,575	2,575
9904-0005	14,707	0	0	0	14,707	14,707

9904-0007	0	0	0	0	0	0
9904-0008	425	0	0	0	425	425
9904-0009	33	0	0	0	33	33
Total	19,884	0	0	0	19,884	19,884

F.5. Comparison of emission reductions or net anthropogenic removals achieved with estimates in the included CPA-DDs

CPA UNFCCC reference number	Amount achieved during this monitoring period (t CO₂e)	Amount estimated ex ante (t CO₂e)
9904-0003	2,144	4,982
9904-0004	2,575	4,959
9904-0005	14,707	26,280
9904-0007	0	12,019
9904-0008	425	1,416
9904-0009	33	42
Total	19,884	49,698

F.6. Remarks on increase in achieved emission reductions.

The overall CER generated from six CPAs during the reported monitoring period is 60% less than the overall estimated CERs from the respective registered CPA DDs.

Document information

<i>Version</i>	<i>Date</i>	<i>Description</i>
02.0	7 June 2017	Revision to: <ul style="list-style-type: none">• Ensure consistency with version 01.0 of the “CDM project standard for programmes of activities (CDM-EB93-A07-STAN);• Make editorial improvements.
01.0	1 April 2015	Initial publication.
Decision Class: Regulatory Document Type: Form Business Function: Issuance Keywords: monitoring report, programme of activities		