



**CLEAN DEVELOPMENT MECHANISM  
PROJECT DESIGN DOCUMENT FORM (CDM-PDD)  
Version 03 - in effect as of: 28 July 2006**

**CONTENTS**

- A. General description of project activity
- B. Application of a baseline and monitoring methodology
- C. Duration of the project activity / Crediting period
- D. Environmental impacts
- E. Stakeholders' comments

**Annexes**

- Annex 1: Contact information on participants in the project activity
- Annex 2: Information regarding public funding
- Annex 3: Baseline information
- Annex 4: Monitoring plan



**SECTION A. General description of project activity.****A.1. Title of the project activity:**

**Inner Mongolia Mangniuhai II Wind Power Project**

Version: 03

Date: 04/02/2010

**A.2. Description of the project activity:**

Inner Mongolia Mangniuhai II Wind Power Project (hereinafter refers to the proposed project) is developed by Longyuan (Xing'anmeng) Wind Power Co., Ltd. and located on Xiliu Town, Tuquan County, Xing'an League, Inner Mongolia Autonomous Region, P.R.China. The construction of project has been started from April 11<sup>th</sup>, 2009 and the preparation work of the project was conducted at present. It will be operation in December, 2009.

**The purpose of the project activity:**

- ✧ The scenario existing prior to the start of the implementation of the Project is to provide the same annual electricity output as the Project by Northeast China Power Grid (NECPG).
- ✧ The Project is a newly-build wind plant with total installed capacity of 49.5MW (33\*1500kW). The project will generate electricity from wind resources using advanced wind power generation technology on a commercial basis and to deliver the electricity to the Northeast China Power Grid (NECPG). The implementation of the proposed project will achieve CO<sub>2</sub> emission reduction by replacing electricity generated by fossil fuel fired power plant.
- ✧ The baseline scenario of the Project is the same as the scenario existing prior to the start of implementation of the Project activity.

**How the Project reduces GHG emissions:**

The Project will utilize the wind resources of the local to generate electricity, which will be delivered to NECPG without CO<sub>2</sub> emissions. It is estimated that the feed-in electricity to the NECPG is approximately 114,200MWh per year with 2307h designed annual operation hours. The Project activity will achieve greenhouse gas (GHG) emission reductions by avoiding CO<sub>2</sub> emissions from the business-as-usual scenario electricity generated by those fossil fuel-fired power plants connected into NECPG. It is estimated that annual emission reductions are 117,400tCO<sub>2</sub>e per year.

**Contributions of the project to sustainable development:**

The Project will not only supply renewable electricity to grid, but also contribute to sustainable development of the local community and the host country by means of:

- To contribute to local economy development by providing electricity to meet local increasing energy demands;



- To reduce GHG emissions and to mitigate the emissions of other pollutants caused from local coal-fired power plants compared with a business-as-usual scenario by displacing part of electricity from fossil fuel-fired power plants;
- To be in accordance with the development priority of China energy industry, and to help diversify energy mix of NECPG by increasing the share of renewable energy;
- To create plenty of short-term employment opportunities and permanent jobs for the local people during the construction and operation period of the Project.

**A.3. Project participants:**

Name of Party involved (*) ((host) indicates a host Party)	Private and/or public entity(ies) project participants (*) (as applicable)	Kindly indicate if the Party involved wishes to be considered as project participant (Yes/No)
P.R.China (Host)	Longyuan (Xing'anmeng) Wind Power Co., Ltd. (the project owner)	No
Switzerland	Essent Trading International S.A. ( the purchasing party )	No
(*) In accordance with the CDM modalities and procedures, at the time of making the CDM-PDD public at the stage of validation, a Party involved may or may not have provided its <u>approval</u> . At the time of requesting registration, the approval by the Party(ies) involved is required.		

Please see Annex 1 for detailed contact information

**A.4. Technical description of the project activity:****A.4.1. Location of the project activity:****A.4.1.1. Host Party(ies):**

People's Republic of China

**A.4.1.2. Region/State/Province etc.:**

Inner Mongolia Autonomous Region

**A.4.1.3. City/Town/Community etc:**

Xiliu Town, Tuquan County, Xing'an League

**A.4.1.4. Detail of physical location, including information allowing the unique identification of this project activity (maximum one page):**

The proposed project is located in Xiliu Town, Tuquan County, Xing'an League, Inner Mongolia Autonomous Region, and P.R.China. The geographical co-ordinates are around: East longitude 121°41'09" and north latitude 45°15'20", and altitude 240m~267.3m. Figure 1 shows the location of Inner Mongolia Autonomous Region and Tuquan County. Figure 2 shows the location of the Project.

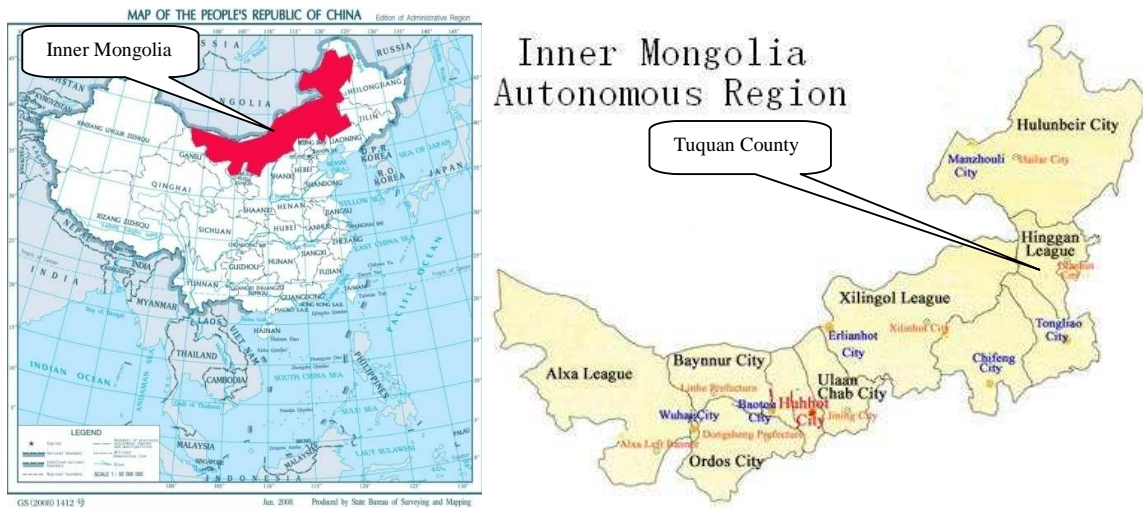


Figure 1 location of Inner Mongolia and Tuquan County

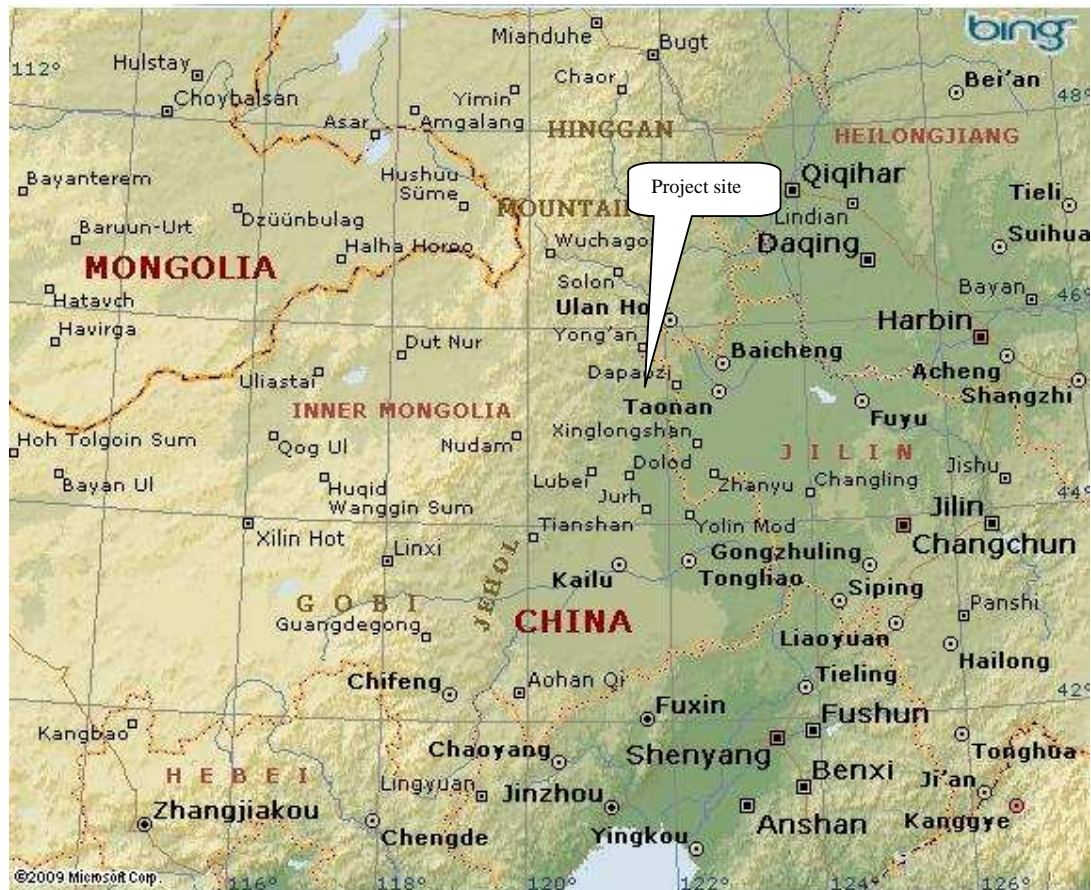


Figure 2 location of the Project

**A.4.2. Category (ies) of project activity:**

Category: Renewable Energy in grid connected applications

Sectoral Scope 1: Energy industries (renewable - / non-renewable sources)

**A.4.3. Technology to be employed by the project activity:****(a) Technology to be employed before the Project:**

The scenario existing prior to the start of the implementation of the Project is to provide the same annual electricity output as the Project by Northeast China Power Grid (NECPG); the key information about NECPG is listed as follows:

Emission Factor	$EF_{OM,y}$	$EF_{BM,y}$	$EF_{CM,y}$	Source
Value/Unit	1.1293tCO <sub>2</sub> e/MWh	0.7242tCO <sub>2</sub> e/MWh	1.028tCO <sub>2</sub> e/MWh	Notification on Determining Baseline Emission Factor of China's Grid <sup>1</sup>
Electricity grid included in NECPG	Liaoning Power Grid, Jilin Power Grid, Heilongjiang Power Grid			

**(b) Technology to be employed by the Project:**

The project scenario is the implementation of the proposed project, the installation and operation of 33 sets of wind turbines with a total capacity of 49.5MW which will supply an average annual generation of 114,200MWh to NECPG and replace the same amount of electricity generated by fossil fuel fired power plants connected to NECPG. The operation hours are 2307h and the load factor is 0.263 for the proposed project, which are determined in FSR which made by China Fulin Wind Power Engineering Co., Ltd. as an independent third party contracted by the project participant and had been provided to Local government while applying the project activity for implementation approval. The type of wind turbine will be SL1500/82 which purchased from Sinovel Wind Co., Ltd. There are eight 10kV lines which gather the electricity generated from 33 sets of wind turbines to the cubicle switchboard located in the booster stations and the electricity would be sent to 220kV substation, Tuquan substation, by the a 66kV line.

The technologies employed in the proposed project activity are advanced domestic technologies, which is no technology transfer activity involved. The main advantage of this domestic manufactured turbine is its' adaptability to different types of wind resources and its improved generation efficiency, so it has been widely installed in China. Table 1 provides the main technical information of wind turbines used in the proposed project.

<sup>1</sup> Notification on Determining Baseline Emission Factor of China's Grid issued by China's DNA on July 2<sup>nd</sup>, 2009  
<http://cdm.ccchina.gov.cn>



Parameter	Value	Source
Installed Capacity ( kW )	1500	Feasibility Study Report
Diameter of rotor ( m )	82.9	
Rated wind speed ( m/s )	10.5	
Cut-in wind speed ( m/s )	3	
Cut-out wind speed ( m/s )	20	
Survival wind speed ( m/s )	59.5	
Swept area (m <sup>2</sup> )	5398	
Generator	Doubly fed asynchronous generator	
Export voltage (V)	0.69	
Output control	Variable speed and full span pitched	

The facilities used in the Project are produced domestically without interalia technology transfer from other countries.

- (c) The baseline scenario is the same as the scenario existing prior to the start of implementation of the project activity.

#### **A.4.4. Estimated amount of emission reductions over the chosen crediting period:**

The renewable crediting period is adopted by the Project. It is expected that the Project will generate emission reductions for about 117,400tCO<sub>2</sub>e per year over the first 7-year crediting period from Jul 1<sup>st</sup>, 2010 to Jun 30<sup>th</sup>, 2017.

Years	Annual estimation of emission reductions in tonnes of CO <sub>2</sub> e
2010(Jul.1 <sup>st</sup> -Dec.31 <sup>st</sup> )	58,700
2011	117,400
2012	117,400
2013	117,400
2014	117,400
2015	117,400
2016	117,400
2017(Jan 1 <sup>st</sup> -Jun.30 <sup>th</sup> )	58,700
<b>Total estimated reductions (tonnes of CO<sub>2</sub>e)</b>	821,800
<b>Total number of crediting years</b>	7
<b>Annual average over the crediting period of estimated reductions (tonnes of CO<sub>2</sub>e)</b>	117,400

#### **A.4.5. Public funding of the project activity:**

No public funds from countries in Annex I are involved in the proposed project.

**SECTION B. Application of a baseline and monitoring methodology:****B.1. Title and reference of the approved baseline and monitoring methodology applied to the project activity:**

The Project applies the approved baseline and monitoring methodology ACM0002-Consolidated methodology for grid-connected electricity generation from renewable sources (Version 10) and refers to *Tool for the demonstration and assessment of additionality* (Version 05.2) and *Tool to calculate the emission factor for an electricity system* (Version 02).

For more information please refer to following link:

<http://cdm.unfccc.int/methodologies/PAmethodologies/approved.html>

**B.2. Justification of the choice of the methodology and why it is applicable to the project activity:**

The Project meets the applicable criteria of the methodology ACM0002 (Version 10) due to following reasons:

- ♦ The Project is a newly-built grid-connected wind power plant with zero-emission;
- ♦ The geographic and system boundaries for NECPG that the Project is connected into can be clearly identified and information on the characteristics of the Grid is available;
- ♦ The Project does not involve switching from fossil fuels to renewable energy sources at the site of the Project activity.

Therefore the methodology ACM0002 (Version 10) is applicable to the Project.

**B.3. Description of the sources and gases included in the project boundary:**

The electricity generated by the Project will be transmitted to Xing'an Power Grid which is an integral part of NECPG. According to *Notification on Determining Baseline Emission Factors of China Power Grid*<sup>2</sup> issued by the National Development and Reform Commission of the Government of China (China DNA), NECPG (Northeast China Power Grid) is composed by Heilongjiang Power Grid, Jilin Power Grid and Liaoning Power Grid. Therefore, NECPG is defined as the project boundary of the Project.

The spatial extent of the project boundary includes the project site and all power plants connected physically to NECPG.

The sources and gases included in the project boundary are listed as below:

---

<sup>2</sup> Notification on Determining Baseline Emission Factor of China's Grid issued by China's DNA on July 2<sup>nd</sup>, 2009  
<http://cdm.ccchina.gov.cn>



	Source	Gas	Included?	Justification / Explanation
<b>Baseline</b>	CO <sub>2</sub> emissions from electricity generation in fossil fuel fired power plants that are displaced due to the project activity.	CO <sub>2</sub>	Yes	Major emission sources
		CH <sub>4</sub>	No	Minor emission source
		N <sub>2</sub> O	No	Minor emission source
<b>Project Activity</b>	Not applicable-the project is a zero-emissions renewable power source	CO <sub>2</sub>	No	Minor emission source
		CH <sub>4</sub>	No	Minor emission source
		N <sub>2</sub> O	No	Minor emission source

The Project boundary can be explained by the following flow diagram, figure 3:

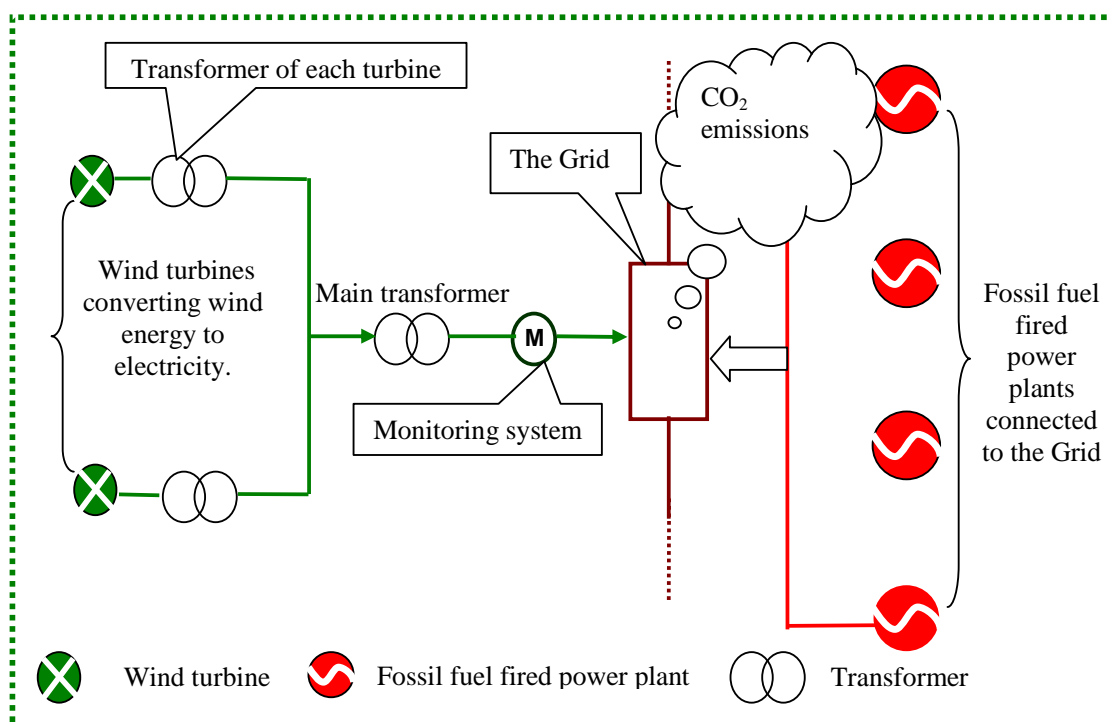


Figure 3 the flow diagram of the project

**B.4. Description of how the baseline scenario is identified and description of the identified baseline scenario:**

For the Project, the possible alternative scenarios that provide outputs or services comparable to the Project should be as follows:

Alternative I: To implement the proposed project activity, but not registered as a CDM project activity;





Alternative II: To construct a thermal power plant with the same electricity output as the Project;

Alternative III: To construct a power plant using other renewable resources with the same electricity output as the Project, and

Alternative IV: To provide for the same annual electricity output as the Project by NECPG.

These alternatives are discussed as below:

Alternative I: The alternative is in compliance with current laws and regulations of China. However, according to the investment analysis in section B.5, the proposed project activity without CDM revenues is economically unattractive because the total investment's internal rate of return (IRR) of the Project is lower than the financial benchmark IRR (8%). Therefore, Alternative I is not feasible and should not be the baseline scenario of the Project.

Alternative II: According to the current regulations in China, construction of coal-fired power plants with capacity of less than 135 MW are forbidden in the areas which can be covered by large grids<sup>3</sup>, and the fossil fuel-fired power units with capacity of less than 100MW is strictly limited for installation<sup>4</sup>. Therefore, Alternative II is not compliant with current laws and regulations of China, and should not be the baseline scenario of the Project.

Alternative III: The alternative is in compliance with current laws and regulations of China. However,

Alternative III is not realistic. Xing'an League, where the Project is located, lacks of feasible water resources for constructing a hydropower plant with the same installed capacity as the Project<sup>5</sup>. Furthermore, there are no adequate biomass sources, solar sources, wave and tidal sources or geothermal sources for constructing a power plant with the same installed capacity as the Project, the reasons showed as following: The county located in the interior area which no any wave and tidal sources<sup>6</sup> and the PV solar power and geothermal power is in its beginning stage which has very little projects in China and most of the projects are demonstration projects which have not put into commercial operation<sup>7</sup>. Meanwhile, there is no geothermal source in the Tuquan County<sup>8</sup> and the evidence of the distribution of geothermal source has been submitted to DOE. The biomass power is also in its beginning stage in China<sup>9</sup>. There is a biomass residue power plant which has been under constructing in Tuquan county and no

<sup>3</sup> Notice on Strictly Prohibiting the Installation of Fuel-fired Generators with the Capacity of 135 MW or below issued by the General Office of the State Council, decree no. 2002-6.

<sup>4</sup> Interim Rules on the Installation and Management of Small-scale Fuel-fired Generators (issued in Aug., 1997).

<sup>5</sup> <http://www.nmxadd.com/newsdisp.asp?id=3610>

<sup>6</sup> <http://www.china5e.com/show.php?contentid=45147>

<sup>7</sup> [http://www.gxi.gov.cn/bgcy/bgcy\\_jtny/bgcy\\_jtny\\_scfx/200908/t20090803\\_134201.htm](http://www.gxi.gov.cn/bgcy/bgcy_jtny/bgcy_jtny_scfx/200908/t20090803_134201.htm)

<http://hi.baidu.com/%BA%CD%C4%D1%C8%CB/blog/item/e3504b82a9c37598f703a677.html>

<sup>8</sup> [http://www.newenergycn.com/drn\\_news.asp?id=125](http://www.newenergycn.com/drn_news.asp?id=125)

<sup>9</sup> [http://www.agri.gov.cn/jjps/t20090722\\_1316360.htm](http://www.agri.gov.cn/jjps/t20090722_1316360.htm)



adequate biomass source to construct a power plant using biomass resources with the same electricity output as the Project<sup>10</sup>. Meanwhile, according to relevant regulation in China, it is forbidden to build a redundant biomass project in the same region<sup>11</sup>. Therefore, Alternative III is not feasible and should not be the baseline scenario of the Project.

Alternative IV: The alternative is compliant with current laws and regulations of China and economically feasible.

In conclusion, Alternative IV is the most likely one to be implemented among all the alternatives. Therefore Alternative IV is identified as the baseline scenario of the Project. In absence of the Project, NECPG will provide for the same annual electricity output as the Project.

**B.5. Description of how the anthropogenic emissions of GHG by sources are reduced below those that would have occurred in the absence of the registered CDM project activity (assessment and demonstration of additionality):**

The Project is not financial attractiveness in feasibility period; the IRR of total investment is just 7.28% and would not reach benchmark and has barriers to be set up. CDM was introduced to the Project owner during in feasibility period, and the FSR had been approved by the Local DRC. In March 2009, the directorate of project owner thought that the potential CERs revenue can help the project to be financial attractive and decided to invest the construction of the project. The project owner has signed the equipment purchasing contract with some equipment trader in March 2009, and the construction period started from Apr. 11th, 2009.

Meanwhile, according to 48<sup>th</sup> meeting of EB, the project owner has been reported to China DNA and EB for confirming the starting date. So, in conclusion, it clearly that CDM had been seriously considered by the project owner prior to the construction of the Project.

Table 2 the timeline of the project

No.	Timeline	Milestone
1	August 2008	Feasibility study finished
2	14/10/2008	Approval of the FSR issued by DRC of Inner Mongolia Autonomous Region.
3	08/12/2008	EIA finished
4	05/02/2009	The directorate of project owner thought that the potential CERs revenue can help the project to be financial attractive and decided to invest the construction of the project.
5	Feb.2009	When the consult contract signed
4	27/02/2009	EIA approval
6	15/03/2009	Minutes of meeting for collecting comments of local stakeholders
7	21/03/2009	When the main transformer purchasing contract signed
8	24/03/2009	When the install contact signed

<sup>10</sup> <http://www.xam.gov.cn/web/xam/mxtzz/zsxm/998.htm>

<sup>11</sup> <http://keji.eco.gov.cn/2/6/6/2/2009/0512/2509.html>



9	24/03/2009	When the wind turbine purchasing contract signed
10	11/04/2009	The construction of the load of plant started
11	11/04/2009	The Form of Prior Consideration of the CDM has been submitted to China DNA and the reply from China DNA has been received on Jul.1 <sup>st</sup> , 2009
12	03/05/2009	The construction period of the wind power plant started
13	20/07/2009	According to the 48 <sup>th</sup> meeting of EB, the Form of Prior Consideration of the CDM has been submitted to EB and the reply from cdm registration of EB has been received on Jul.23 <sup>rd</sup> , 2009

The additionality of the Project is demonstrated by using the *Tool for the Demonstration and Assessment of Additionality* (Version 05.2) approved by the CDM EB and requested by the methodology ACM0002 (Version10). The *Tool for the Demonstration and Assessment of Additionality* (Version05.2) provides for a step-wise approach to demonstrate and assess the additionality. These steps include:

### **Step 1. Identification of alternatives to the project activity consistent with current laws and regulations**

#### ***Sub-step 1a. Define alternatives to the project activity.***

For the Project, the possible alternative scenarios in absence of the CDM project activity should be as follows:

Alternative I: To implement the proposed project activity, but not as a CDM project activity;

Alternative II: To construct a thermal power plant with the same electricity output as the Project;

Alternative III: To construct a power plant using other renewable resources with the same electricity output as the Project;

Alternative IV: To provide for the same annual electricity output as the Project by NECPG.

Alternative III is not realistic because Xing'an League, where the Project is located, lacks of feasible water resources for constructing a hydropower plant with the same installed capacity as the Project<sup>12</sup>. Furthermore, there are no adequate biomass sources, solar sources, wave and tidal sources or geothermal sources for constructing a power plant with the same installed capacity as the Project.

To sum up, Alternative I, Alternative II and Alternative IV should be considered in the following analysis.

#### ***Sub-step 1b. Enforcement of applicable laws and regulations:***

Alternative I: To implement the proposed project activity, but not as a CDM project activity. The alternative is in compliance with current laws and regulations of China.

<sup>12</sup> <http://www.nmxadd.com/newsdisp.asp?id=3610>; <http://cwera.cma.gov.cn/cn/>



Alternative II: To construct a thermal power plant with the same installed capacity as the Project. Based on the requirements of applicable laws and regulations, the alternative is not realistic. According to the current regulations in China, construction of coal-fired power plants with capacity of less than 135 MW are forbidden in the areas which can be covered by large grids and the fossil fuel-fired power units with capacity of less than 100 MW is strictly limited for installation.

Alternative IV: To provide for the same annual electricity output as the Project by NECPG. The alternative is in compliance with current laws and regulations of China.

To sum up, Alternative I and Alternative IV should be considered in the following analysis.

## **Step 2. Investment analysis**

### ***Sub-step 2a. Determine appropriate analysis method***

Tool for the Demonstration and Assessment of Additionality (Version05.2) provides three analysis methods to apply for the investment analysis: the simple cost analysis (option I), the investment comparison analysis (option II) and the benchmark analysis (option III).

For the proposed project, the simple cost analysis method is not applicable because the project activity will generate economic benefit (from electricity sale) other than CDM related income. The investment comparison analysis method is also not applicable because the Alternative IV is the Northeast China Power Grid rather than a new investment project.

To conclude, the proposed project will use the benchmark analysis method based on total investment IRR to identify whether or not that the financial indicators of the proposed project is lower than relevant benchmark value.

### ***Sub-step 2b – Option III. Apply benchmark analysis***

In according with *Interim Rules on Economic Assessment of Electrical Engineering Retrofit Projects* issued by former State Power Corporation of China<sup>13</sup>, the financial internal rate of return (IRR) for total investment as benchmark in China's power generation industry is 8%, considering economic assessments of hydropower projects, fossil fuel fired projects, transmission and substation projects. Nowadays China's existing wind power projects have also applied it as the benchmark IRR. Therefore, 8% is adopted as the financial benchmark IRR for the Project. If the total investment's IRR of the Project is less than 8%, the Project will be financially unfeasible and then be additional.

### ***Sub-step 2c. Calculation and comparison of financial indicators:***

---

<sup>13</sup> [http://www.law-lib.com/law/law\\_view1.asp?id=8867](http://www.law-lib.com/law/law_view1.asp?id=8867)

**Basic parameters of the Project**

The basic parameters to calculate the financial indicators of the Project are listed in Table 3.

Table3. Basic parameters for IRR calculation<sup>14</sup>

Items	Unit	Data	Source
Installed Capacity	MW	49.5	Feasibility Study Report
Estimated annual electricity generated	MWh	114,200	Feasibility Study Report
Project lifetime	year	21	Feasibility Study Report
Total investment	Million RMB	414.29	Feasibility Study Report
Electricity tariff(incl. VAT) (<30000hours)	RMB/kWh	0.54	Feasibility Study Report
Electricity tariff(incl. VAT) (>30000hours)	RMB/kWh	0.40	Feasibility Study Report
VAT	%	8.5	Feasibility Study Report
Income tax	%	25	Feasibility Study Report
Tax of expense for city maintenance and construction	%	5	Feasibility Study Report
Tax of education fee addition	%	3	Feasibility Study Report
Period of depreciation	years	15	Feasibility Study Report
Rate of depreciation	%	6.33	Feasibility Study Report
Annual O&M cost	Million RMB	12.11	Feasibility Study Report

**Comparison of financial indicator**

Based on these data listed on Table one above, the IRR of the total investment of the Project is only 7.28%, which is lower than the benchmark IRR of 8%. Therefore, the Project is not financially attractive and fulfils the requirement of additionality.

Taking into account the income from CERs (10.5€/tCO<sub>2</sub>e), the total investment's IRR of the Project will be 9.54%, which will higher than the benchmark IRR of 8%. Therefore, the Project is economically attractive, which means that the CDM revenues could help the Project overcome the investment barrier.

***Sub-step 2d. Sensitivity analysis***

<sup>14</sup> According to Interim Rules on Economic Assessment of Electrical Engineering Retrofit Project, the fixed value should be used in the investment analysis.



The purpose of the sensitivity analysis is to examine whether the conclusion regarding the financial viability of the proposed project is sound and tenable with those reasonable variations in the assumptions.

Four factors are considered in following sensitivity analysis:

- 1) Total static investment
- 2) Tariff
- 3) Estimated annual output
- 4) Annual operation and maintenance cost( **O&M cost**)

The four financial parameters were identified as the main variable factors for sensitive analysis of financial attractiveness.

In the case that total investment decreases by about 4.90%, the IRR of the proposed project begins to exceed the benchmark. Considering the majority of total investment is due to wind turbines whose price tends to increase for its demand booming<sup>15</sup>, at the same time, recently the material price (especially the steel price) and tax rate are gradually increasing in China<sup>16</sup>, as a result, it is very difficult to lower the total investment in the FSR of the proposed project. Hence within the reasonable range of total investment, the proposed project is always lack of financial attractiveness.

In the case that the expected power tariff increases by about 4.75%, the IRR of the proposed project begins to exceed the benchmark. However there is extremely unlikely for the tariff of the proposed project to have an increase of 4.75%. According to China's Management Rules on Tariff issued by NDRC<sup>17</sup>, the tariff of the un-tendering projects should be determined by the government with reference to the tariff of tendering wind projects. As a whole, the tariff for newly built project is generally lower than the tariff provided in the latest guiding price, and the tariff used in the calculation of FSR is the same with the latest guiding price<sup>18</sup>. As a result, the proposed project is always lack of financial attractiveness because the tariff would not increase by 4.75%.

In the case that the estimated annual output increases by about 4.55%, the IRR of the proposed project begins to exceed the benchmark. Therefore, the estimated annual output reflects the annual generation output of the proposed project, which depends on the average wind resources at the project site for a specific wind turbine. The calculation of local wind resources is based on the 36 years monitoring data by

---

<sup>15</sup> <http://www.86wind.com/info/detail/4-5335.html>

<sup>16</sup> [http://www.ic37.com/htm\\_news/2008-1/15834\\_66520.htm](http://www.ic37.com/htm_news/2008-1/15834_66520.htm)

<sup>17</sup> [http://www.gov.cn/ztl/2006-01/20/content\\_165910.htm](http://www.gov.cn/ztl/2006-01/20/content_165910.htm) .Interim Regulation for Tariff of Renewable Energy Power Generation and Appointment of Expenses FAGAIJIAGE(2006) No.7

<sup>18</sup> [http://www.ndrc.gov.cn/zcfb/zcfbtz/2008tongzhi/t20080813\\_230718.htm](http://www.ndrc.gov.cn/zcfb/zcfbtz/2008tongzhi/t20080813_230718.htm)



local weather department<sup>19</sup>. Therefore, the probability that electricity outputs is 4.55% higher than the estimated value is unreasonable.

The impact of the annual O&M cost is the slightest, as the IRR of the proposed project begins to exceed the benchmark when the annual O&M cost decreases by 21%. Since the wind turbines operate in high latitude and cold area, such reduction of O&M cost lacks possibility for the proposed project. Moreover, the price of material and salaries of the employees are gradually increasing in China, which leads annual O&M cost gradually increasing<sup>20</sup>. Therefore, the proposed project always lacks financial attractiveness within the reasonable range of annual O&M cost.

### Step3. Barrier analysis

No barrier analysis has been applied.

### Step 4 Common practice analysis

#### *Sub-step 4a. Analyze other activities similar to the proposed project activity*

In line with the EB guidance on the additionality tool, the common practice analysis is carried out on similar projects in the same region and taking place in a comparable environment with regards to regulatory framework, investment climate, access to technology, and access to financing, etc. In China, the general environment of projects of this type of wind farm such as the wind resources<sup>21</sup>, on grid tariff<sup>22</sup>, investment climate<sup>23</sup> are only similar and comparable in the same province (Autonomous Region). On this basis, the common practice region and comparable framework is provincial and the project is compared to other projects in the Inner Mongolia Autonomous Region.

According to the ACM0013 (Version 02.1) Page 7, the similar projects should be defined as the range from 50% to 150% of the rated capacity of the project plant. So, the project chose the range from 25MW to 75MW as the similar projects of the project.

Projects applied in common practice analysis are defined as wind power projects with similar installed capacity (25MW to 75MW) and commissioning data (after 2002<sup>24</sup>) in Inner Mongolia Autonomous Region. Referring to “China Wind Farms Capacity Statistic in 2007”, Detailed information list as follows:

---

<sup>19</sup> FSR, Page 2-3

<sup>20</sup> [http://www.ic37.com/htm\\_news/2008-1/15834\\_66520.htm](http://www.ic37.com/htm_news/2008-1/15834_66520.htm)

<sup>21</sup> [http://www.chinadaily.com.cn/hqcj/2007-09/03/content\\_6075777.htm](http://www.chinadaily.com.cn/hqcj/2007-09/03/content_6075777.htm)

<sup>22</sup> [http://cwera.cma.gov.cn/upload/b\\_2\\_left\\_02.jpg](http://cwera.cma.gov.cn/upload/b_2_left_02.jpg): Cumulative wind installation in China till 2006.

<sup>23</sup> The tariff issued by the NDRC is based on the same province, such as (Fa Gai Jia Ge [2007]1260 dated 9/06/2007, Fa Gai Jia Ge [2007]3303 dated 03/12/2007 and Fa Gai Jia Ge [2008]1876 dated 23/07/2008).

<sup>24</sup> [http://www.sdpc.gov.cn/nyjt/nyzywx/t20050810\\_41378.htm](http://www.sdpc.gov.cn/nyjt/nyzywx/t20050810_41378.htm)

<sup>25</sup> In 2002, the State Council approved the Power Industry System Reform Plan which established the basic policy for the reform of Chinese Power industry. The reform that enforced the separation of power plant from grids and introduced a competition system, the tariffs are determined through competitive bidding. So there has much difference in regulation frame for the wind power plants that put in to operation before and after 2002.



**Table 9 Grid-connected wind farms similar to the project in Inner Mongolia Power grid**

Project Title	Capacity	Remarks
Inner Mongolia Keshiketeng Qi Dali III wind power project	31.2 MW	Demonstration Project Supported by national debt fund and loan from Denmark government

Data source :

[http://www.gd.xinhuanet.com/newscenter/ztbd/2007-10/18/content\\_11435955.htm](http://www.gd.xinhuanet.com/newscenter/ztbd/2007-10/18/content_11435955.htm)

<http://www.86wind.com/info/detail/37-6774.html>

[http://www.sdpc.gov.cn/zfdj/jggg/dian/t20080218\\_193009.htm](http://www.sdpc.gov.cn/zfdj/jggg/dian/t20080218_193009.htm)

***Sub-step 4b. Discuss any similar options that are occurring***

According to the tool for demonstration and assessment of additionality (Version 05.2), CDM project activities (registered activities and project activities which have been published on the UNFCCC website for global stakeholder consultation as part of validation process) are not included in this analysis.

Then, as the table above shown, the project is a demonstration project. Inner Mongolia Keshiketeng Qi Dali III wind power project was also a demonstration project supported by national debt fund and loan from Denmark government<sup>25</sup>.

For the proposed project, it is impossible to be developed in such favorable financial conditions like the demonstration project enjoyed.

Therefore, the existence of these projects in Table 7 does not contradict the claim that the proposed project activity is financially unattractive.

In conclusion, the proposed project is additional. Without the CDM revenues, the project activity would not be implemented smoothly.

---

<sup>25</sup> [http://www.gd.xinhuanet.com/newscenter/ztbd/2007-10/18/content\\_11435955.htm](http://www.gd.xinhuanet.com/newscenter/ztbd/2007-10/18/content_11435955.htm)

**B.6. Emission reductions:****B.6.1. Explanation of methodological choices:****Baseline emissions**

The Project is a new power plant, therefore, according to ACM0002 (version 10), the baseline emissions include only CO<sub>2</sub> emissions from electricity generation in fossil fuel fired power plants that are displaced due to the project activity, calculated as follows:

$$BE_y = EG_{PJ,y} \times EF_{grid,CM,y} \quad (1)$$

Where:

$BE_y$  = Baseline emissions in year  $y$  (tCO<sub>2</sub>/yr).

$EG_{PJ,y}$  = Quantity of net electricity generation that is produced and fed into the grid as a result of the implementation of the proposed project activity in year  $y$  (MWh/yr).

$EF_{grid,CM,y}$  = Combined margin CO<sub>2</sub> emission factor for grid connected power generation in year  $y$ , calculated using the latest version of the *Tool to calculate the emission factor for an electricity system*.

*Calculation of  $EG_{PJ,y}$*

The calculation of  $EG_{PJ,y}$  is different for (a) Greenfield plants, (b) retrofits and replacements, and (c) capacity additions.

Because the project activity is the installation of a new grid-connected renewable power plant at a site where no renewable power plant was operated prior to the implementation of the project activity, so method (a), Greenfield plants is adopted to calculate the  $EG_{PJ,y}$  in this PDD.

$$EG_{PJ,y} = EG_{facility,y}$$

Where:

$EG_{PJ,y}$  = Quantity of net electricity generation that is produced and fed into the grid as a result of the implementation of the proposed project activity in year  $y$  (MWh/yr).

$EG_{facility,y}$  = Quantity of net electricity generation supplied by the proposed project to the grid in year  $y$  (MWh/yr)

*Calculation of  $EF_{grid,CM,y}$* 

The *Tool to calculate the emission factor for an electricity system* provides for a step-wise approach to calculate the  $EF_{grid,CM,y}$ . These steps include:

***Step 1 Identify the relevant electric power system***

As described in Section B.3, the spatial extent of the project boundary includes all power plants connected physically into NECPG. Therefore, the project electricity system is defined as NECPG.

For NECPG, there are electricity imports from Northwest China Power Grid (NWPG), therefore the connected electricity system is defined NWPG. However, when determining the operating margin (OM) emission factor of NECPG, the PDD uses the weighted average emission rate of NWPG as the emission factor of net electricity imports ( $EF_{grid,import,y}$ ) from NWPG to NECPG (Detail information refer to Annex3).

***Step 2 Select an operating margin (OM) method***

The calculation of the operating margin emission factor ( $EF_{grid,OM,y}$ ) is based on one of the following methods:

- Option A: (a) Simple OM, or
- Option B: (b) Simple adjusted OM, or
- Option C: (c) Dispatch data analysis OM, or
- Option D: (d) Average OM.

Among the total electricity generation of NECPG, the amount of low-cost/must run resources accounts for about 4.72% in 2003, 6.46% in 2004, 8.28% in 2005 and 5.69% in 2006, 5.53% in 2007<sup>26</sup> respectively, all less than 50%. Therefore, method (a), simple OM is adopted to calculate the operating margin emission factor of NECPG in this PDD.

For the Project, the *ex-ante* option is adopted with using the data vintage as a 3-year generation-weighted average based on the most recent data for calculation of the simple OM emission factor ( $EF_{grid,OMsimple,y}$ ) of NECPG.

***Step 3 Calculate the operating margin emission factor according to the selected method***

---

<sup>26</sup> China Electric Power Yearbook, 2004~2008 Edition.



The simple OM emission factor is calculated as the generation-weighted average CO<sub>2</sub> emissions per unit net electricity generation (tCO<sub>2</sub>/MWh) of all generating power plants serving the system, not including low-cost / must-run power plants / units. It may be calculated:

- (a) Based on data on fuel consumption and net electricity generation of each power plant / unit, or
- (b) Based on data on net electricity generation, the average efficiency of each power unit and the fuel type(s) used in each power unit, or
- (c) Based on data on the total net electricity generation of all power plants serving the system and the fuel types and total fuel consumption of the project electricity system.

As per Tool to calculate the emission factor for an electricity system, Option A should be preferred. However, the data on fuel consumption and net electricity generation of each power plant / unit is not publicly available. Thus, Option A cannot be adopted for the Project. Similarly, the data on net electricity generation, the average efficiency of each power unit and the fuel type(s) used in each power unit are not available too. Thus, Option B cannot be adopted for the Project.

According to the *Notification on Determining Baseline Emission Factors of China Power Grid*, only nuclear and renewable power generations are considered as low-cost / must-run power sources in China. Furthermore, the quantity of electricity supplied to the grid by low-cost / must-run power sources is known. Therefore, Option C is adopted to calculate the simple OM emission factor of NECPG.

The simple OM emission factor is calculated based on the net electricity supplied to the grid by all power plants serving the system, not including low-cost / must-run power plants / units, and based on the fuel type(s) and total fuel consumption of the project electricity system, as follows:

$$EF_{grid,OMsimple,y} = \frac{\sum_i FC_{i,y} \times NCV_{i,y} \times EF_{co2,i,y}}{EG_y} \quad (2)$$

Where:

$EF_{grid,OMsimple,y}$  = Simple operating margin CO<sub>2</sub> emission factor in year y (tCO<sub>2</sub>/MWh)

$FC_{i,y}$  = Amount of fossil fuel type  $i$  consumed in the project electricity system in year y (mass or volume unit)

$NCV_{i,y}$  = Net calorific value (energy content) of fossil fuel type  $i$  in year y (GJ / mass or volume unit)

$EF_{co2,i,y}$  = CO<sub>2</sub> emission factor of fossil fuel type  $i$  in year y (tCO<sub>2</sub>/GJ)



$EG_y$  = Net electricity generated and delivered to the grid by all power sources serving the system, not including low-cost / must-run power plants / units, in year  $y$  (MWh)

$i$  = All fossil fuel types combusted in power sources in the project electricity system in year  $y$

$y$  = the three most recent years.

The data on electricity generation are obtained from the *China Electric Power Yearbook* from 2006 to 2008 (published annually). The data on different fuel consumptions for power generation and the net caloric values of the fuels are obtained from the *China Energy Statistical Yearbook* from 2006 to 2008 (published annually). The emission factors of the fuels adopted are obtained from *2006 IPCC Guidelines for National Greenhouse Gas Inventories*.

#### ***Step 4 Identify the cohort of power units to be included in the build margin***

The sample group of power units  $m$  used to calculate the build margin consists of either:

- ✧ (a) The set of five power units that have been built most recently, or
- ✧ (b) The set of power capacity additions in the electricity system that comprise 20% of the system generation (in MWh) and that have been built most recently.

Since the set of power units described as (b) in NECPG comprises the larger annual generation than that of (a), the sample group (b) should be used for calculating the build margin of NECPG. Power plant registered as CDM project activities should be excluded from the sample group  $m$ .

In terms of vintage of data, the PDD choose the option as below:

For the first crediting period, calculate the build margin emission factor ex-ante based on the most recent information available on units already built for sample group  $m$  at the time of CDM-PDD submission to the DOE for validation. For the second crediting period, the build margin emission factor should be updated based on the most recent information available on units already built at the time of submission of the request for renewal of the crediting period to the DOE. For the third crediting period, the build margin emission factor calculated for the second crediting period should be used. This option does not require monitoring the emission factor during the crediting period.

#### ***Step 5 Calculate the build margin emission factor***

The build margin emissions factor is the generation-weighted average emission factor ( $tCO_2/MWh$ ) of all power units  $m$  during the most recent year  $y$  for which power generation data is available, calculated as follows:



$$EF_{grid,BM,y} = \frac{\sum_m EG_{m,y} \cdot EF_{EL,m,y}}{\sum_m EG_{m,y}} \quad (3)$$

Where:

$EF_{grid,BM,y}$  = Build margin CO<sub>2</sub> emission factor in year  $y$  (tCO<sub>2</sub>/MWh).

$EG_{m,y}$  = Net quantity of electricity generated and delivered to the grid by power unit  $m$  in year  $y$  (MWh).

$EF_{EL,m,y}$  = CO<sub>2</sub> emission factor of power unit  $m$  in year  $y$  (tCO<sub>2</sub>/MWh)

$m$  = Power units included in the build margin.

$y$  = Most recent historical year for which power generation data is available.

Currently in China, the capacity margin data of sampling plants group  $m$  are publicly unavailable. Taking notice of this situation, CDM EB accepts the following deviation in application of methodology AMS-I.D in China<sup>27</sup>:

- Use of capacity additions exceeds 20% of total generation for estimating the build margin emission factor for grid electricity.
- Use of weights estimated using installed capacity in place of annual electricity generation.

And it is suggested to use the efficiency level of the best technology commercially available in the provincial/regional or national grid of China, as a conservative proxy.

For the Project: Firstly, calculate the share of different power generation technology in recent capacity additions. Secondly, calculate the weight for capacity additions of each power generation technology. And finally calculate the emission factor using the efficiency level of the best technology commercially available in China.

Due to the installed capacities of coal based, oil based and gas based cannot be separated and determined directly at present, BM is calculated with following steps and formula:

*SubStep 5.a* Calculate the power generation emissions for solid, liquid and gas fuel and each share of total emissions based on the Energy Balance Table of the most recent year.

---

<sup>27</sup> <http://cdm.unfccc.int/Projects/Deviations>



$$\lambda_{Coal} = \frac{\sum_{i \in COAL, j} F_{i,j,y} \times NCV_{i,j} \times EF_{co2,i,j}}{\sum_{i,j} F_{i,j,y} \times NCV_{i,j} \times EF_{co2,i,j}} \quad (4)$$

$$\lambda_{Oil} = \frac{\sum_{i \in OIL, j} F_{i,j,y} \times NCV_{i,j} \times EF_{co2,i,j}}{\sum_{i,j} F_{i,j,y} \times NCV_{i,j} \times EF_{co2,i,j}} \quad (5)$$

$$\lambda_{Gas} = \frac{\sum_{i \in GAS, j} F_{i,j,y} \times NCV_{i,j} \times EF_{co2,i,j}}{\sum_{i,j} F_{i,j,y} \times NCV_{i,j} \times EF_{co2,i,j}} \quad (6)$$

Where:

$F_{i,j,y}$  is the amount of fuel  $i$  (in a mass or volume unit) consumed by province  $j$  in year(s)  $y$ .

$NCV_{i,j}$  = Net calorific value (energy content) of fossil fuel type  $i$  consumed by province  $j$  (GJ / mass or volume unit).

$EF_{co2,i,j}$  = CO<sub>2</sub> emission factor of fossil fuel type  $i$  consumed by province  $j$  (tCO<sub>2</sub>/GJ).

$COAL$ ,  $OIL$  and  $GAS$  are footnote group for solid fuels, liquid fuels and gas fuels.

*SubStep 5.b* Calculate emission factor for thermal power of each grid based on the result of *SubStep 5.a* and the efficiency level of the best technology commercially available in China.

$$EF_{Thermal} = \lambda_{Coal} \times EF_{Coal,Adv} + \lambda_{Oil} \times EF_{Oil,Adv} + \lambda_{Gas} \times EF_{Gas,Adv} \quad (7)$$

Where:

$EF_{Coal,Adv}$ ,  $EF_{Oil,Adv}$  and  $EF_{Gas,Adv}$  represent the efficiency level of the best coal-based, oil-based and gas-based power generation technology commercially available in China.

*SubStep 5.c* Calculate BM of the grid based on the result of *SubStep 5.b* and the share of thermal power of recent 20% capacity additions.

$$EF_{grid,BM,y} = \frac{CAP_{Thermal}}{CAP_{Total}} \times EF_{Thermal} \quad (8)$$

Where:

$CAP_{Total}$  is total capacity additions while  $CAP_{Thermal}$  is capacity additions of thermal power.





The data on different fuel consumptions for power generation and the net caloric values of the fuels are obtained from the *China Electric Power Yearbook* from 2006 to 2008 (published annually) and the *China Energy Statistical Yearbook* from 2006 to 2008 (published annually). The emission factors of the fuels adopted are obtained from *2006 IPCC Guidelines for National Greenhouse Gas Inventories*.

With reference to the *Notification on Determining Baseline Emission Factors of China Power Grid*, the weighted average fuel consumption for power generation of 600 MW sub-critical coal-fired power generators built in 2007 (322.5gCe/kWh) and the 200 MW oil/gas based combined cycle power generators (246gCe/kWh) are taken as the efficiency level of the best technology commercially available in China.

### ***Step 6 Calculate the combined margin emissions factor***

The combined margin emissions factor is calculated as follows:

$$EF_{grid,CM,y} = EF_{grid,OM,y} \times w_{OM} + EF_{grid,BM,y} \times w_{BM} \quad (9)$$

Where:

$EF_{grid,BM,y}$  = Build margin CO<sub>2</sub> emission factor in year y (tCO<sub>2</sub>/MWh)

$EF_{grid,OM,y}$  = Operating margin CO<sub>2</sub> emission factor in year y (tCO<sub>2</sub>/MWh)

$w_{OM}$  = Weighting of operating margin emissions factor (%)

$w_{BM}$  = Weighting of build margin emissions factor (%)

Wind project activities:  $w_{OM} = 0.75$  and  $w_{BM} = 0.25$  (owing to their intermittent and non dispatchable nature) for the first crediting period and for subsequent crediting periods.

### **Project emissions**

For wind power project activities,  $PE_y = 0$

### **Leakage**

Accord to the ACM0002 (Version 10), no leakage emissions are considered. The main emissions potentially giving rise to leakage in the context of electric sector projects are emissions arising due to activities such as power plant construction and upstream emissions from fossil fuel use (e.g. extraction, processing, and transport). These emissions sources are neglected.

### **Emission reductions**



Emission reductions are calculated as follows:

$$ER_y = BE_y - PE_y \quad (10)$$

Where:

$ER_y$  = Emission reductions in year y (t CO<sub>2</sub>e/yr).

$BE_y$  = Baseline emissions in year y (t CO<sub>2</sub>e/yr).

$PE_y$  = Project emissions in year y (t CO<sub>2</sub>/yr).

#### B.6.2. Data and parameters that are available at validation:

<b>Data / Parameter:</b>	<i>Power generation</i>
Data unit:	<i>MWh</i>
Description:	<i>The total electricity generation and the electricity generated by those low-cost/musts run power plants of NECPG on 2003, 2004, 2005, 2006 and 2007.</i>
Source of data used:	<i>China Electric Power Yearbook 2004, 2005, 2006, 2007 and 2008 Edition.</i>
Value applied:	<i>Detailed in China Electric Power Yearbook 2004-2008 Edition.</i>
Justification of the choice of data or description of measurement methods and procedures actually applied :	<i>Official data.</i>
Any comment:	-

<b>Data / Parameter:</b>	$EG_y$
Data unit:	<i>MWh</i>
Description:	<i>The net electricity generated and delivered to NECPG on 2005, 2006 and 2007, not including those generated by low-cost/must run power plants/units.</i>
Source of data used:	<i>China Electric Power Yearbook 2006-2008 Edition.</i>
Value applied:	<i>Detailed in Annex 3.</i>
Justification of the choice of data or description of measurement methods and procedures actually applied :	<i>Official data.</i>
Any comment:	-

<b>Data / Parameter:</b>	<i>Installed Capacity</i>
Data unit:	<i>MW</i>
Description:	<i>The installed capacity by different sources of NECPG in year 2004, 2005 and 2007.</i>
Source of data used:	<i>China Electric Power Yearbook 2005, 2006 and 2008 Edition.</i>



Value applied:	<i>Detailed in Annex 3.</i>
Justification of the choice of data or description of measurement methods and procedures actually applied :	<i>Official data.</i>
Any comment:	

<b>Data / Parameter:</b>	$F_{i,j,y}$
Data unit:	$10^4 t$ or $10^8 m^3$
Description:	<i>Different fuel consumptions for power generation in NECPG in year 2005, 2006 and 2007.</i>
Source of data used:	<i>China Energy Statistical Yearbook 2006, 2007 and 2008 Edition.</i>
Value applied:	<i>Detailed in Annex 3.</i>
Justification of the choice of data or description of measurement methods and procedures actually applied :	<i>Official data.</i>
Any comment:	-

<b>Data / Parameter:</b>	$NCV_i$
Data unit:	$GJ/t$ or $GJ/10^3 m^3$
Description:	<i>Average low calorific values of fuels for electricity generation.</i>
Source of data used:	<i>China Energy Statistical Yearbook 2008 Edition, P283.</i>
Value applied:	<i>Detailed in Annex 3.</i>
Justification of the choice of data or description of measurement methods and procedures actually applied :	<i>China-specific values are adopted.</i>
Any comment:	<i>Official data.</i>

<b>Data / Parameter:</b>	$EF_{CO_2,i}$
Data unit:	$tC/TJ$
Description:	<i>Emission factors of fuels for electricity generation.</i>
Source of data used:	<i>Table 1.3 and 1.4, Page 1.21-1.24, "2006 IPCC Guidelines for National Greenhouse Gas Inventories" Volume 2 Energy.</i>
Value applied:	<i>Detailed in Annex 3.</i>
Justification of the choice of data or description of measurement methods and procedures actually applied :	<i>IPCC world-wide default values are adopted. Data issued by IPCC.</i>



Any comment:	
<b>Data / Parameter:</b>	$EF_{Coal,Adv}$ , $EF_{Oil,Adv}$ and $EF_{Gas,Adv}$
Data unit:	tCO <sub>2</sub> e/MWh
Description:	The efficiency level of the best coal-based, oil-based and gas-based power generation technology commercially available in China.
Source of data used:	Notification on Determining Baseline Emission Factors of China Power Grid
Value applied:	Detailed in Annex 3.
Justification of the choice of data or description of measurement methods and procedures actually applied :	Official data.
Any comment:	

### B.6.3. Ex-ante calculation of emission reductions:

According to the calculation results in B6.1, the emission reductions of the proposed project are calculated as follows:

#### Baseline emissions

With reference to the Notification on Determining Baseline Emission Factors of China Power Grid issued by Chinese DNA on July 2<sup>nd</sup>, 2009, the OM emission factor ( $EF_{OM,y}$ ) of NECPG is 1.1293tCO<sub>2</sub>e/MWh, and the build margin emission factor ( $EF_{BM,y}$ ) of NECPG is 0.7242tCO<sub>2</sub>e/MWh. The detailed calculations and data are listed in Annex 3.

The baseline emissions factor ( $EF_y$ ) of NECPG is calculated with formula (9) in part B.6.1 as follow:

$$EF_y = w_{OM} \cdot EF_{OM,y} + w_{BM} \cdot EF_{BM,y} = 1.028\text{tCO}_2\text{e/MWh}$$

Annual electricity output to NECPG of the Project is 114,200MWh. Based on the emission factors in the previous step, the baseline emission of the Project can be calculated with formula (1) in part B.6.1 as follow:

$$BE_y = 117,400\text{tCO}_2\text{e}$$

#### Project emissions

According to the baseline methodology ACM0002, the GHG emission of the proposed project within the project boundary is zero

$$PE_y = 0$$

#### Emission Reductions



The emission reduction ( $ER_y$ ) by the project activity during a given year  $y$  is the difference between baseline emissions ( $BE_y$ ), project emissions ( $PE_y$ ), as follows:

$$ER_y = BE_y - PE_y = 117,400 - 0 = 117,400 tCO_2e$$

**B.6.4. Summary of the ex-ante estimation of emission reductions:**

Year	Estimation of project activity emissions (tonnes of CO <sub>2</sub> e)	Estimation of baseline emissions (tonnes of CO <sub>2</sub> e)	Estimation of leakage (tonnes of CO <sub>2</sub> e)	Estimation of overall emission reductions (tonnes of CO <sub>2</sub> e)
2010(Jul.1 <sup>st</sup> -Dec.31 <sup>st</sup> )	0	58,700	0	58,700
2011	0	117,400	0	117,400
2012	0	117,400	0	117,400
2013	0	117,400	0	117,400
2014	0	117,400	0	117,400
2015	0	117,400	0	117,400
2016	0	117,400	0	117,400
2017(Jan 1 <sup>st</sup> -Jun.30 <sup>th</sup> )	0	58,700	0	58,700
<b>Total (tonnes of CO<sub>2</sub>e)</b>	0	821,800	0	821,800

**B.7. Application of the monitoring methodology and description of the monitoring plan:****B.7.1. Data and parameters monitored:**

Data / Parameter:	$EG_{facility, y}$
Data unit:	MWh/y
Description:	Quantity of net electricity generation supplied by the project to the grid in year y
Source of data to be used:	Measured and Calculated by Monitoring Meter.
Value of data applied for the purpose of calculating expected emission reductions in section B.5	114,200
Description of measurement methods and procedures to be applied:	There will be installed a multifunctional and bidirectional meter (accuracy degree will be no less than 0.5) in the project site through which the exported and imported generation can be measured, and the net electricity generation can be calculated. The metering instruments will be calibrated annually according to the national standards and rules.
QA/QC procedures to be applied:	The record of the electricity transaction between the project and the grid will be obtained to ensure the consistency.
Any comment:	See also section B.7.2 for more details.

**B.7.2. Description of the monitoring plan:**

For the purpose of the integrated, continuous, transparent and accurate monitoring of the Project and the precise calculation of emission reductions during the crediting period, based on the monitoring methodology and the actual conditions of the Project, the monitoring plan is designed as follow:

**1. Data to be monitored**

In this PDD, emission factor of the Project is determined ex-ante. Therefore the quantity of net electricity generation supplied by the project to the grid by the Project which is used to calculate emission reductions is defined as the key data to be monitored.

**2. Implementation of the monitoring plan**

The Project owner will take the responsibility for the monitoring plan implementation. A CDM working team is established and consists of project manager, CDM manager, technical staff, and statistic staff. Organizing structure of the CDM team is shown as figure 4.

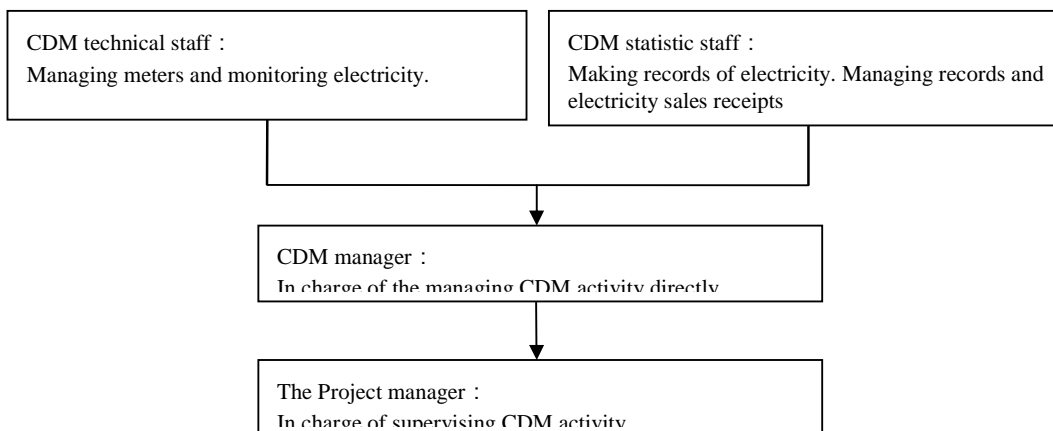


Figure 4 Structure of the CDM team

### 3. Training

The Management Group has all received sufficient training in terms of monitoring and verification. They have received general training on wind power project operation organized the project owner, including reading and calibration of meters, recording of the readings, adjustment of readings, and reporting of readings. On the other hand, they have received CDM training, including validation, registration and verification. When necessary, the CDM Manager is responsible for organizing or attending trainings on Monitoring and Verification. The procedure is as follows:

- (1) Investigating whether there is need for trainings, and if so, the content of trainings.
- (2) If so, obtaining the approval of General Manager.
- (3) Checking if there are any trainings on Monitoring and Verification to be organized by other organizations. If so, attending them.
- (4) If not, organizing trainings themselves.

### 4. Monitoring meter

The quantity of net electricity generation supplied by the project to the grid by the Project will be continuously monitored through the monitoring meter installed in the Project site. The accuracy degree will be no less than 0.5 according to relevant national standards.



The Schematic diagram of the meter position is as follows:

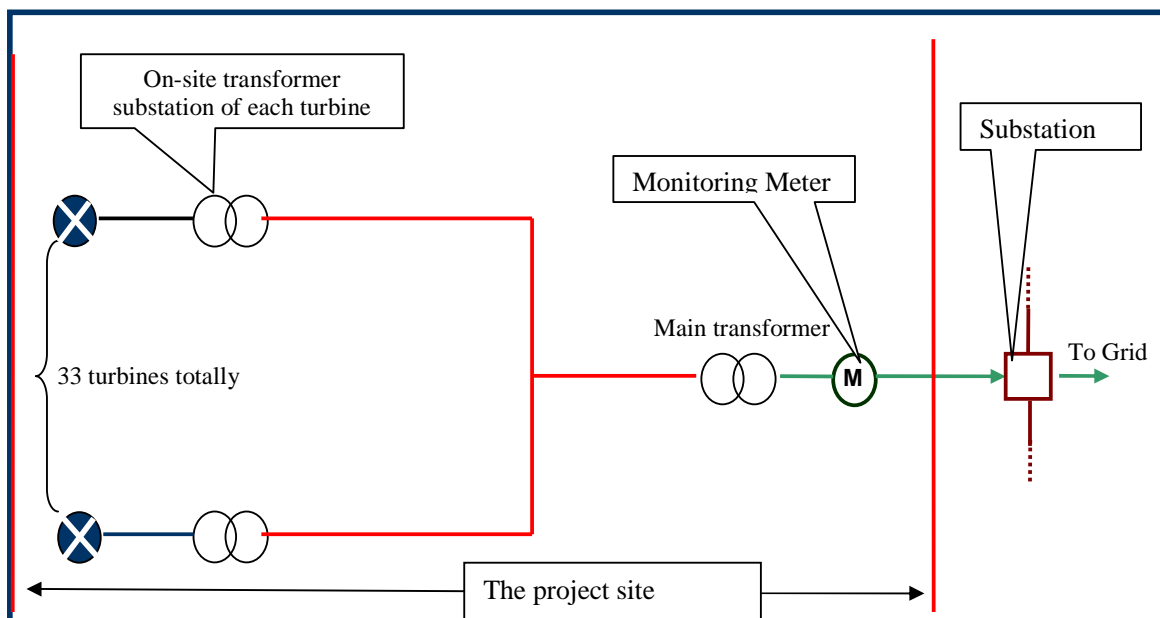


Figure 5 The Schematic diagram of the meter position

## 5. Procedures of monitoring

On-duty staff will watch the operation status of metering equipments everyday on site. Furthermore, designated staff will collect the measured electricity data and complete the corresponding records on a monthly basis. Before being archived, these records will be checked by other staffs to ensure the correctness. The data from these records will be digested and analyzed and the results will be reported to company administrator or supervisor.

All the relevant data records will be kept by the Project owner during the crediting period and two years after for verification.

## 6. Quality assurance and quality control

The quality assurance and quality control procedures involves of data monitoring, recording, maintaining and archiving, and monitoring equipment calibration.

The quantity of net electricity generation supplied by the project to the grid by the Project will be monitored through Monitoring Meter installed in the Project site. The data should be double checked against relevant electricity records from the grid for quality control. The Power Purchase Agreement between the Project owner and Grid Company can be used as guidance on data collection and documentation.



Calibration of Meters & Metering should be implemented according to national standards and rules (such as *DL/T448-2000 the Technical Management Rules for Electric Power Measuring Installations*), and the accuracy of the electricity meter is no less than 0.5.

### 7. Procedures of exception handling and reporting

The CDM technical staffs will take real-time monitoring on the operation status of metering meters to ensure that any abnormality could be detected and the corresponding measures of processing, reporting and recording will be taken in time. The abnormal meters will be repaired immediately and must be calibrated by a qualified third-party before being put into use again.

Problem occurred in monitoring and measurement process will be recorded and reported to company administrator or supervisor. Consequently, the corrective resolution will be adopted to deal with that problem and to avoid it occur again in future.

All the relevant records of exception handling will be kept by the Project owner during the crediting period and two years after for verification.

### 8. Verification

It is expected that the verification of emission reductions generated from the Project will be carried out annually.

<b>B.8. Date of completion of the application of the baseline study and monitoring methodology and the name of the responsible person(s)/entity(ies)</b>
--

Date of completion of baseline study: 24/07/2009

Names of person/entity determining the baseline are listed as follows:

(Not the project participants listed in Annex 1)

Renlei

Longyuan (Beijing) Carbon Asset Management Technology Co., Ltd

Address: Floor 7, Part C, International Investment Building, No.6-9, Fuchengmen North Road, Xicheng District, and Beijing, China. 100034

Tel: +86-10-66091521

Fax: +86-10-66091396

Email: [renlei@clypg.com](mailto:renlei@clypg.com)

**SECTION C. Duration of the project activity / Crediting period****C.1 . Duration of the project activity:****C.1.1. Starting date of the project activity:**

21/03/2009 ( Real action- the earliest date for the purchase agreement with some technology suppliers. )

The main transformer purchasing contract was signed on Mar. 21<sup>th</sup>, 2009. The install contract of equipment and the wind turbine purchasing contract were signed on Mar. 24<sup>th</sup>, 2009. And the start work order was signed on Apr. 11<sup>th</sup>, 2009. So, the PP chooses the date of signature for purchasing main transformer as the starting date of CDM project activity conservatively.

**C.1.2. Expected operational lifetime of the project activity:**

21 years

**C.2 . Choice of the crediting period and related information:****C.2.1. Renewable crediting period****C.2.1.1. Starting date of the first crediting period:**

01/07/2010 or the day after registration, whichever is later

**C.2.1.2. Length of the first crediting period:**

7 years and 0 month.

**C.2.2. Fixed crediting period:****C.2.2.1. Starting date:**

Not applicable.

**C.2.2.2. Length:**

Not applicable.

**SECTION D. Environmental impacts**

&gt;&gt;

**D.1. Documentation on the analysis of the environmental impacts, including transboundary impacts:**

In accordance with relevant environmental law and regulations, the Environmental Assessment Report Table of the project has been approved by the Environmental Protection Administration of Inner Mongolia Autonomous Region, referred as “Neihuanshen (Table) [2009] No.54”. A summary of the report is illustrated as follows:

- **Impacts on Water**

The wind-farm does not consume any water, nor does it generate any wastewater in the operation phase. The possible negative impacts are the household wastewater. Under normal conditions with highly automated monitoring and control system, the household wastewater will be first treated in a septic tank, and then be disinfected to discharge for circumjacent virescence.

- **Impacts Solid Waste**

Solid waste produced by builders and staff, and the waste earth from digging of the foundation in the construction phase. The amount of household solid waste will be very little, which will not have impact on the environment. Besides, the solid waste will be collected and moved to the landfill site of the nearest city. The waste earth from the digging should be firstly used for refilling. The rest of the waste earth should be placed in the low area of the site and replanted with grass.

- **Impacts on Noise Environment**

The noise of the project in construction phase is from vehicles and machines on-site. According to the monitoring data from the construction site, the noise is at a level between 91-102 dB. Moreover, the magnitude of the impacts during construction phase only exists for a temporary period and will expire with the end of the construction phase. Moreover, operational noise from the rotating blades is expected to be minimal due to the higher background noise caused by strong winds. The closest residential area to the site of the Project is over 1km away. Therefore, the noise of the project will not have impact on nearby residents.

**Impacts on Air Environment**

Wind Power plants are known to contribute to zero atmospheric pollution as no fuel combustion is involved during any stage of the operation. However, the sources of air pollution are mainly due to the construction activities including the transportation of construction material, road construction and Improvement and cadre construction etc. The impacts on air environment are temporarily that the impact



will be ended when the construction is completed. It is suggested that several measures shall be taken into account, such as the construction under strong wind weather is prohibited, reducing the area of construction as much as possible, spraying water when undertaking construction, and reducing the speed of vehicles in the field. Hence, air pollution caused by the project is not significant to the surrounding environment.

- **Impacts on Ecosystem Environment**

A serious potential concern for wind farms is their impact on vegetation, animals and migrating birds. The land on which the project activity takes place is barren and unfertile. Prior to the project activity the land had no beneficial use. The vegetation in the project area was substituted by grassland for livestock use and land for cultivation. So the minor quantity of solid / liquid discharge, likely to be generated during the construction phase has no noticeable impact on soil use and the project proponent has made arrangements to dispose them in an environmentally acceptable manner. Moreover, there are no migratory birds / endangered species in the region of project activity. Therefore, the activities to be carried out will not generate any negative impact on the ecological environment.

- **Ecological impacts**

The impacts on the vegetation and the use of land are mainly from activities of construction. The plants destroyed due to construction activities are mostly secondary shrubbery and weed, and there have no impacts on valuable and rare plants. With the implementation of water and solid conservation plan, the impacted vegetation can be recovered. Therefore, the Project has little impacts on the regional ecosystem and the vegetation.

**In conclusion, environmental impacts arising from the Project are considered insignificant.**

**D.2. If environmental impacts are considered significant by the project participants or the host Party, please provide conclusions and all references to support documentation of an environmental impact assessment undertaken in accordance with the procedures as required by the host Party:**

The Project will not have significant impacts on local environment in general, and the proposed project is definitely an environmentally more friendly way of providing power than others power plants. Meanwhile, the EIA of the Project has been approved by the local environmental protection administration. In conclusion, environmental impacts arising from the Project are considered insignificant.

**SECTION E. Stakeholders' comments****E.1. Brief description how comments by local stakeholders have been invited and compiled:**

In Mar 2009, staff from the project owner carried out a survey of local residents possibly be impacted in the area where the Project is sited to collect public comments and attitudes towards the Project before the construction starting.

The comments on the project activity by the local stakeholders have been invited and complied in two ways:

**1) Symposium**

On Mar 15<sup>th</sup>, 2009, under the support of local government, the project owner successfully held a stakeholder symposium in Tuquan County. Totally 10 stakeholder representatives participated the symposium, respectively from the Development and Reform Bureau of Tuquan County, several other department of local government and some villagers around plant. The project participants informed them about the project, asked for their comments on the project concerning socio-economic and environmental aspects, namely as follows,

- 1) Impact on the economic aspect, including the local economy, income and employment, etc;
- 2) Impact on the environmental aspect, including the ecological environment, air, noise and the impact of soil erosion, etc;
- 3) Impact on sustainable development;
- 4) Suggestions and recommendations on the proposed project;
- 5) Attitude to the implementation of the proposed project, whether or not to support.

**2) Questionnaire**

In order to finish this survey, project owner designed the style of Questionnaire and visited to Xiliu town to do door to door Interviews. The investigators went into the house of local residents to finish the work face to face. The local residents mainly included some villagers inhabiting in the town. The survey was conducted through distributing and collecting responses to a questionnaire.

The following is the main questions of the questionnaire.

- ✧ Do you know the proposed project?
- ✧ What benefits will be brought by the proposed project? Such as lessening of power shortage; increasing of income; improvement standard of living; improvement of local environment;



increasing of employment opportunities; or others.

- ✧ Will the proposed project bring negative impacts to economy development? Such as impacts of water quality; ecological environment; construction noise; quality of the air; or others.
- ✧ Do you comprehend the corresponding compensation measures for submerged land and settlement of migrants of the proposed project?
- ✧ Do you agree with the corresponding compensation measures?
- ✧ Do you support the construction of the proposed project?

Questionnaires were distributed according to the principle of both representation and randomness in order to reflect the public opinions and comments in a fair and real manner.

Totally 45 questionnaires returned out of 45 with 100% response rate.

The survey had taken full account into the public advice of different ages, genders, and occupations. Of all the respondents, 69% are under the age of 40, 31% are over 41; 92% are male and 8% are female; 58% are college or above, 58% are senior high school or below.

Table10 the stat of the respondents

Item	The stat of the respondents					
Sex	Male	No.	%	Female	No.	%
		41	82		4	8
Age	≤30		31-40	41-60		>50
	13		18	10		4
Education	senior high school and below			college and above		
	19			26		

## E.2. Summary of the comments received:

The following is a summary of the key findings based on 45 returned questionnaires.

- ✧ All respondents are supportive of the construction of the Project
- ✧ 42 respondents (93.3%) consider that the Project will be beneficial for the local social and economic development, and 3 respondents (6.7%) hold the neutral attitude;
- ✧ All respondents consider that the Project won't have impact on ecological environment in the process of operation.
- ✧ 39 respondents (86.7%) consider the project won't have negative impact on ecological environment in the process of construction, and 6 respondents (13.4%) hold the neutral attitude;





- ✧ 43 respondents (95.6%) consider the project will bring more job chances, and 2 respondents (4.4%) hold the neutral attitude;
- ✧ 1 respondent (2.2%) consider that the project will have negative impact that the vehicles for construction may crush down grass farms; others won't have any mind for the negative impact.

It shows that the local residents strongly support the Project, and they consider the Project will bring various positive impacts on their lives. The possible negative impacts focus on the grass farms which could be crushed down by the vehicles for construction.

<b>E.3. Report on how due account was taken of any comments received:</b>
---

The Project owner will pay much attention to the comments and suggestions of stakeholders and will put all of the measures listed in the EIA into effect during construction and operation period, so as to achieve environmental benefits, social benefits and economic benefits.

1 person said that the possible negative impacts focus on the grass farms which could be crushed down by the vehicles for construction. For this impact, the project owner will make sure the bound of construction, require the vehicles run in accordance with the road transport routes

In corresponding with EIA, the project owner has defined construction scale and worked out operation route. They request vehicles should be driven according to required transportation route. The behaviour of rolling grassland by construction vehicles will be prohibited in order to reduce the construction impact on surrounding vegetation.

Meanwhile, the work of vegetation restore should be done when construction is over. Eco impact brought by the project will be eliminated with the complete of the construction.

To sum up, the local residents are very supportive on the Project. The Project owner has taken full consideration of the comments and suggestions given by stakeholders during the project implementation. The Project owner will also keep regular communication with the public regarding the construction and operation of the Project.

**Annex 1****CONTACT INFORMATION ON PARTICIPANTS IN THE PROJECT ACTIVITY****Project Entity:**

Organization:	Longyuan (Xing'anmeng) Wind Power Co., Ltd.
Street/P.O.Box:	No.6-9, Fuchengmeng North Street, Xicheng District
Building:	Floor 7, Tower C, International Investment Building
City:	Beijing
State/Region:	Beijing
Postfix/ZIP:	100034
Country:	China
Telephone:	+86-10-66091318
FAX:	+86-10-66091396
E-Mail:	Yangjingmei@clypg.com.cn
URL:	—
Represented by:	Huang Qun
Title:	
Salutation:	Mr
Last Name:	Huang
Middle Name:	/
First Name:	Qun
Department:	CDM Depatrment
Mobile:	
Direct FAX:	+86-10-66091318
Direct tel:	+86-10-66091396
Personal E-Mail:	Yangjingmei@clypg.com.cn

**CERs Buyer:**

Organization:	Essent Trading International S.A.
Street/P.O.Box:	Rue des Glacis-de-Rive 12-14
Building:	
City:	Geneva
State/Region:	/
Postfix/ZIP:	1207
Country:	Switzerland
Telephone:	+41 22 918 3442
FAX:	+41 22 918 3399
E-Mail:	/
URL:	<a href="http://www.essenttrading.com">http://www.essenttrading.com</a>
Represented by:	Sebastian Wurster
Title:	Vice President Emissions
Salutation:	Mr
Last Name:	Wurster
Middle Name:	
First Name:	Sebastian
Department:	
Mobile:	
Direct FAX:	+41 22 918 3442
Direct tel:	+41 22 918 3399
Personal E-Mail:	<a href="mailto:carbon@essenttrading.com">carbon@essenttrading.com</a>



Annex 2

**INFORMATION REGARDING PUBLIC FUNDING**

No public funding from Annex I countries is involved in the proposed project.

**Annex 3****BASELINE INFORMATION**

Data recommended in the *Notification on Determining Baseline Emission Factors of China power Grid* ( issued by Chinese DNA ) for NECPG are adopted for the Project.

Table A1~A3 show the thermal power generation supplied to NECPG in 2005, 2006 and 2007.

Table A1. Thermal power generation data within the NECPG in 2005

Province	Thermal power generation ( MWh)	Auxiliary electricity consumption ( % )	Thermal power supplied to the grid ( MWh)
Liaoning	83697000	7.03	77,813,101
Jilin	35294000	6.59	32,968,125
Heilongjiang	58000000	7.96	53,383,200
Total			164,164,426

Data source: *China Electric Power Yearbook 2006*.

Table A2. Thermal power generation data within the NECPG in 2006

Province	Thermal power generation ( MWh)	Auxiliary electricity consumption ( % )	Thermal power supplied to the grid ( MWh)
Liaoning	96282000	6.62	89,908,132
Jilin	38576000	6.78	35,960,547
Heilongjiang	62964000	7.85	58,021,326
Total			183,890,005

Data source: *China Electric Power Yearbook 2007*.

*China Energy Statistical Yearbook 2007 Edition*.

Table A3. Thermal power generation data within the NECPG in 2007

Province	Thermal power generation ( MWh)	Auxiliary electricity consumption ( % )	Thermal power supplied to the grid ( MWh)
Liaoning	106,500,000	7.00	99,045,000
Jilin	43,700,000	7.68	40,343,840
Heilongjiang	68,400,000	7.67	63,153,720
Total			202,542,560

Data source: *China Electric Power Yearbook 2008*.



With reference to the *Notification on Determining Baseline Emission Factors of China Power Grid*, Table A4 shows the low calorific values and emission factors for electricity generation that are to be used in the following OM emission factor calculation and BM emission factor calculation.

Table A4. Data of fuels consumed for electricity generation

Fuel type	Low calorific value	Emission factor	Oxidation rate
Raw coal	20908 kJ/kg	87,300	1
Cleaned coal	26344 kJ/kg	87,300	1
Other washed coal	8363 kJ/kg	87,300	1
Briquettes	20908 kJ/kg	87,300	1
Coke	28435 kJ/kg	95,700	1
Crude oil	41816 kJ/kg	71,100	1
Gasoline	43070 kJ/kg	67,500	1
Diesel	42652 kJ/kg	72,600	1
Fuel oil	41816 kJ/kg	75,500	1
Other petroleum products	41816 kJ/kg	75,500	1
Natural gas	38931 kJ/m3	54300	1
Coke oven gas	16726 kJ/m3	37300	1
Other gas	5227 kJ/m3	37300	1
LPG	50179 kJ/kg	61600	1
Refinery gas	46055 kJ/kg	48200	1

Data sources: *China Energy Statistical Yearbook 2008 Edition*, P283;

Table 1.3 and Table 1.4, Chapter 1, Volume 2 of the 2006 IPCC Guidelines for National Greenhouse Gas Inventories.

Table A5~A7 show the calculation of the simple OM emission factor of NECPG in 2005, 2006 and 2007



Table A5 Calculation of Simple OM Emission Factor of NECPG in 2005

Fuel type	Unit	Liaoning	Jinlin	Heilongjiang	Total Fuel	Carbon Content tC/TJ	Oxidation rate %	Emission Factor kgCO <sub>2</sub> /TJ	NCV MJ/t,km <sup>3</sup>	Emission tCO <sub>2</sub> e I=D×G×H/100000 ( 10000)
		A	B	C	D=A+B+C	E	F	G	H	
Raw Coal	10 <sup>4</sup> t	4305.41	2446.13	3383.21	10134.75	25.8	100	87300	20908	184,986,389
Clean Coal	10 <sup>4</sup> t				0	25.8	100	87300	26344	0
Other washed coal	10 <sup>4</sup> t	524.74	19.26	24.16	568.16	25.8	100	87300	8363	4,148,079
Coke	10 <sup>4</sup> t				0	29.2	100	95700	28435	0
Coke oven gas	10 <sup>8</sup> m <sup>3</sup>	1.03	3.57	0.68	5.28	12.1	100	37300	16726	329,409
Other coal gas	10 <sup>8</sup> m <sup>3</sup>	12.62	8.37		20.99	12.1	100	37300	5227	409,236
Crude oil	10 <sup>4</sup> t	1.16			1.16	20	100	71100	41816	34,488
Gasoline	10 <sup>4</sup> t				0	18.9	100	67500	43070	0
Diesel	10 <sup>4</sup> t	1.18	1.48	0.57	3.23	20.2	100	72600	42652	100,018
Fuel oil	10 <sup>4</sup> t	9.32	2.46	1.55	13.33	21.1	100	75500	41816	420,842
LPG	10 <sup>4</sup> t	0.12			0.12	17.2	100	61600	50179	3,709
Refinery gas	10 <sup>4</sup> t	5.48		1.32	6.8	15.7	100	48200	46055	150,950
Nature gas	10 <sup>8</sup> m <sup>3</sup>		0.84	2.24	3.08	15.3	100	54300	38931	651,098
Other petroleum products	10 <sup>4</sup> t				0	20	100	75500	41816	0
Other coking	10 <sup>4</sup> t				0	25.8	100	95700	28435	0
Other energy	10 <sup>4</sup> tce	16.18			16.18	0	100	0	0	0
Total emission of North East China Grid(tCO <sub>2</sub> e)					191,234,218					
Net electricity import from North East China Grid(MWh)					164,164,426					
Average emission factor of North East China(tCO <sub>2</sub> e/MWh)					1.16489					



Source: China Energy Statistical Yearbook 2006 Edition

Table A5 Calculation of Simple OM Emission Factor of NECPG in 2006

Fuel type	Unit	Liaoning	Jinlin	Heilongjiang	Total Fuel	Carbon Content tC/TJ	Oxidation rate %	Emission Factor kgCO <sub>2</sub> /TJ	NCV MJ/t,km <sup>3</sup>	Emission tCO <sub>2</sub> e I=D×G×H/100000 ( 10000)
		A	B	C	D=A+B+C	E	F	G	H	
Raw Coal	10 <sup>4</sup> t	4681.99	2738.24	3698.29	11118.52	25.8	100	87300	20908	202,942,832
Clean Coal	10 <sup>4</sup> t	0.03			0.03	25.8	100	87300	26344	690
Other washed coal	10 <sup>4</sup> t	674.74	17.83	96	788.57	25.8	100	87300	8363	5,757,270
Coke	10 <sup>4</sup> t	3.32			3.32	29.2	100	95700	28435	90,345
Coke oven gas	10 <sup>8</sup> m <sup>3</sup>	2.68	0.16	1.44	4.28	12.1	100	37300	16726	267,021
Other coal gas	10 <sup>8</sup> m <sup>3</sup>	55.26	1.43		56.69	12.1	100	37300	5227	1,105,268
Crude oil	10 <sup>4</sup> t	0.49			0.49	20	100	71100	41816	14,568
Gasoline	10 <sup>4</sup> t				0	18.9	100	67500	43070	0
Diesel	10 <sup>4</sup> t	0.75	0.39	0.3	1.44	20.2	100	72600	42652	44,590
Fuel oil	10 <sup>4</sup> t	11.73	0.45	1.44	13.62	21.1	100	75500	41816	429,998
LPG	10 <sup>4</sup> t				0	17.2	100	61600	50179	0
Refinery gas	10 <sup>4</sup> t	8.55		4.27	12.82	15.7	100	48200	46055	284,585
Nature gas	10 <sup>8</sup> m <sup>3</sup>		0.19	2.1	2.29	15.3	100	54300	38931	484,095
Other petroleum products	10 <sup>4</sup> t				0	20	100	75500	41816	0
Other coking	10 <sup>4</sup> t				0	25.8	100	95700	28435	0
Other energy	10 <sup>4</sup> tce	12.16	17.6	82.77	112.53	0	100	0	0	0
Total emission of North East China Grid(tCO <sub>2</sub> e)					211,421,263					
Net electricity import from North East China Grid(MWh)					183,890,005					





Average emission factor of North East China(tCO <sub>2</sub> e/MWh)	1.14972
---	---------

Source: China Energy Statistical Yearbook 2007 Edition

Table A5 Calculation of Simple OM Emission Factor of NECPG in 2007

Fuel type	Unit	Liaoning	Jinlin	Heilongjiang	Total Fuel	Carbon Content tC/TJ	Oxidation rate %	Emission Factor kgCO <sub>2</sub> /TJ	NCV MJ/t,km <sup>3</sup>	Emission tCO <sub>2</sub> e I=D×G×H/100000 ( 10000)
		A	B	C	D=A+B+C	E	F	G	H	
Raw Coal	10 <sup>4</sup> t	4869.32	2873.45	3736.11	11478.88	25.8	100	87300	20908	209,520,369
Clean Coal	10 <sup>4</sup> t	0	0	0	0	25.8	100	87300	26344	0
Other washed coal	10 <sup>4</sup> t	747.85	16.52	106.81	871.18	25.8	100	87300	8363	6,360,397
Coke	10 <sup>4</sup> t	4.99	0	0	4.99	29.2	100	95700	28435	135,789
Coke oven gas	10 <sup>8</sup> m <sup>3</sup>	5.53	1.44	1.89	8.86	12.1	100	37300	16726	552,758
Other coal gas	10 <sup>8</sup> m <sup>3</sup>	68.38	9.06	0	77.44	12.1	100	37300	5227	1,509,825
Crude oil	10 <sup>4</sup> t	0.24	0	0	0.24	20	100	71100	41816	7,135
Gasoline	10 <sup>4</sup> t	0	0	0	0	18.9	100	67500	43070	0
Diesel	10 <sup>4</sup> t	0.96	0.39	0.47	1.82	20.2	100	72600	42652	56,357
Fuel oil	10 <sup>4</sup> t	8.43	0.45	1.48	10.36	21.1	100	75500	41816	327,076
LPG	10 <sup>4</sup> t	0	0	0	0	17.2	100	61600	50179	0
Refinery gas	10 <sup>4</sup> t	7.33	0	1.99	9.32	15.7	100	48200	46055	206,890
Nature gas	10 <sup>8</sup> m <sup>3</sup>	0	0.02	2.03	2.05	15.3	100	54300	38931	433,360
Other petroleum products	10 <sup>4</sup> t	0.01	0	0	0.01	20	100	75500	41816	316
Other coking	10 <sup>4</sup> t	0.46	0	0	0.46	25.8	100	95700	28435	12,518
Other energy	10 <sup>4</sup> tce	12.41	2.43	51.35	66.19	0	100	0	0	0
Total emission of North East China Grid(tCO <sub>2</sub> e)					219,122,791					



Net electricity import from North East China Grid(MWh)	202,542,560
Average emission factor of North East China(tCO <sub>2</sub> e/MWh)	1.08186

*Source: China Energy Statistical Yearbook 2008 Edition*



The Simple OM emission factor is the weighted average value of the Simple OM emission factors in the year 2005, 2006 and 2007, i.e.

$$EF_{OM,y} = 1.1293 \text{ tCO}_2\text{e/MWh}$$

Build Margin emission factor is calculated according to the steps and formulae described in Section B.6.1.

Table A8 is the calculation of the emission factor reflecting the efficiency level of the best electricity generation technology commercially available in China with reference to the *Notification on Determining Baseline Emission Factors of China Power Grid* issued by Chinese DNA.

Table A8. The data of efficiency level of the best electricity generation technologies commercially available in China and the corresponding emission factors

	Parameter	Best efficiency of supplying electricity %	Fuel emission factor tc/TJ	Oxidation rate	Emission factor tCO <sub>2</sub> e/MWh
		A	B	C	$C = 3.6/A/10000 * B * C$
Coal-fired power plant	$EF_{Coal}$	38.10	87300.00	1	0.8249
Oil-fired power plant	$EF_{Oil}$	49.99	75500.00	1	0.5437
Gas-fired power plant	$EF_{Gas}$	49.99	54300.00	1	0.3910



Table A9. Calculation of simple OM emission factor of NCPG in 2007

Energy	Unit	Liaoning	Jinlin	Heilongjiang	Total Fuel	Carbon Content tC/TJ	Oxidation rate %	Emission Factor kgCO <sub>2</sub> /TJ	NCV MJ/t,km <sup>3</sup>	Emission (tCO <sub>2</sub> e) tCO <sub>2</sub> e
		A	B	C	D=A+B+C	E	F	G	H	I=D×G×H/100000 ( 10000)
Raw Coal	10 <sup>4</sup> t	4869.32	2873.45	3736.11	11478.88	25.8	100	87300	20908	209,520,369
Cleaned coal	10 <sup>4</sup> t	0	0	0	0	25.8	100	87300	26344	0
Other washed coal	10 <sup>4</sup> t	747.85	16.52	106.81	871.18	25.8	100	87300	8363	6,360,397
Coke	10 <sup>4</sup> t	4.99	0	0	4.99	29.2	100	95700	28435	135,789
Other coking	10 <sup>4</sup> t	0.46	0	0	0.46	25.8	100	95700	28435	12,518
<b>Sub-total</b>										<b>216,029,074</b>
Crude oil	10 <sup>4</sup> t	0.24	0	0	0.24	20	100	71100	41816	7,135
Gasoline	10 <sup>4</sup> t	0	0	0	0	18.9	100	67500	43070	0
Diesel	10 <sup>4</sup> t	0.96	0.39	0.47	1.82	20.2	100	72600	42652	56,357
Fuel oil	10 <sup>4</sup> t	8.43	0.45	1.48	10.36	21.1	100	75500	41816	327,076
Other petroleum products	10 <sup>4</sup> t	0.01	0	0	0.01	20	100	75500	41816	316
<b>Sub-total</b>										<b>390,885</b>
LPG	10 <sup>4</sup> t	0	0	0	0	17.2	100	61600	50179	0
Refinery gas	10 <sup>4</sup> t	7.33	0	1.99	9.32	15.7	100	48200	46055	206,890
Coke oven gas	10 <sup>8</sup> m <sup>3</sup>	5.53	1.44	1.89	8.86	12.1	100	37300	16726	552,758
Other coal gas	10 <sup>8</sup> m <sup>3</sup>	68.38	9.06	0	77.44	12.1	100	37300	5227	1,509,825
Nature gas	10 <sup>8</sup> m <sup>3</sup>	0	0.02	2.03	2.05	15.3	100	54300	38931	433,360
<b>Sub-total</b>										<b>2,702,833</b>
<b>Total</b>										<b>219,122,791</b>

Source:China Energy Statistical Yearbook 2008 Edition



Calculate with data provided in Table A8, A9 and formula, the value for

$$\lambda_{Coal,y} = 98.59\% \quad \lambda_{Oil,y} = 0.18\% \quad \lambda_{Gas,y} = 1.23\%$$

Based on Table A8 and formula in section B.6.1, the emission factor for thermal power is:

$$EF_{Thermal,y} = \lambda_{Coal,y} \times EF_{Coal,Adv,y} + \lambda_{Oil,y} \times EF_{Oil,Adv,y} + \lambda_{Gas,y} \times EF_{Gas,Adv,y} = 0.8190 \text{ tCO}_2\text{e/MWh}$$

Table A10~A12 show the installed capacity of NECPG in 2004, 2005 and 2007 and Table A13 shows the calculation of BM emission factor of NECPG.

Table A10. Installed capacity of the NECPG in 2004

Installed Capacity	Liaoning	Jilin	Heilongjiang	Total
Thermal power ( MW)	14960.3	5958.7	11259.1	32178.1
Hydro power (MW)	1404.1	3601.2	844.6	5849.9
Nuclear power (MW)	0	0	0	0
Wind power and Other (MW)	142	36.1	39.3	217.4
Total (MW)	16506.4	9596	12143	38245.4

Data sources: China Electric Power Yearbook 2005 Edition.

Table A12. Installed capacity of the NECPG in 2005

Installed Capacity	Liaoning	Jilin	Heilongjiang	Total
Thermal power (MW)	15999	6359.4	11575.6	33934
Hydro power (MW)	1403.9	3720.8	846.7	5971.4
Nuclear power (MW)	0	0	0	0
Wind power and Other (MW)	135.5	85.4	52.4	273.3
Total (MW)	17538.4	10165.6	12474.7	40178.7

Data sources: China Electric Power Yearbook 2006 Edition.

Table A12. Installed capacity of the NECPG in 2007

Installed Capacity	Liaoning	Jilin	Heilongjiang	Total
Thermal power(MW)	19720	7580	14080	41380
Hydro power(MW)	1410	3890	870	6170
Nuclear power(MW)	0	0	0	0
Wind power and Other(MW)	359	514	230	1103
Total(MW)	21489	11984	15180	48653

Data sources: China Electric Power Yearbook 2008 Edition.



Table A13. Calculation of BM emission factor of NECPG

	Installed capacity in 2004 (MW) A	Installed capacity in 2005 (MW) B	Installed capacity in 2007 (MW) C	Capacity additions during 2004-2007 (MW) D=C-A	Share in total capacity Additions (MW)
Thermal power	32178.1	33934	41380	9201.9	88.42%
Hydro power	5849.9	5971.4	6170	320.1	3.08%
Nuclear power	0	0	0	0	0.00%
Wind power and Other	217.4	273.3	1103	885.6	8.51%
Total	38245.4	40178.7	48653	10407.6	100.00%
Proportion to the installed capacity in 2007	78.61%	82.58%	100.00%		

Based on Table A13 and formula in section B.6.1, calculate the BM emission factor of NECPG as

$$EF_{BM,y} = \frac{CAP_{Thermal,y}}{CAP_{Total,y}} \times EF_{Thermal,y} = 0.8190 \times 88.42\% = 0.7242 \text{ tCO}_2/\text{MW}$$



**Annex 4**

**MONITORING PLAN**

Please refer to section B.7. No need to complement more information here.

-----