



Monitoring report form
(Version 04.0)

Complete this form in accordance with the Attachment "Instructions for filling out the monitoring report form" at the end of this form.

MONITORING REPORT

Title of the project activity	SF ₆ recovery and reclamation project, South Korea
Reference number of the project activity	4274
Version number of the monitoring report	01
Completion date of the monitoring report	12/01/2015
Registration date of the project activity	01/04/2011
Monitoring period number and duration of this monitoring period	Monitoring Period Number : 02 Monitoring Period: 27/04/2012~31/12/2014
Project participant(s)	Solvay Fluor Korea Co. Ltd Solvay Energy Services SAS EcoSecurities International Limited (withdrawn)
Host Party(ies)	Republic of Korea
Sectoral scope and selected methodology(ies), and where applicable, applied standardized baseline(s)	Sectoral Scopes: 11 : Fugitive emissions from production and consumption of halocarbons and sulphur hexafluoride Applied methodology: AM0079 version 2, "Recovery of SF ₆ from Gas insulated electrical equipment in testing facilities"
Estimated amount of GHG emission reductions or net anthropogenic GHG removals by sinks for this monitoring period in the registered PDD	442,808
Actual GHG emission reductions or net anthropogenic GHG removals by sinks achieved in this monitoring period	393,742
Actual GHG emission reductions or net anthropogenic GHG removals by sinks achieved during the period up to 31 December 2012(if applicable)	67,861
Actual GHG emission reductions or net anthropogenic GHG removals by sinks achieved during the period from 1 January 2013 onwards (if applicable).	325,881

SECTION A. Description of project activity**A.1. Purpose and general description of project activity**

>>

Purpose of the project activity:

The project activity aims to reduce SF₆ emissions from the Korea Electrotechnology Research Institute (KERI) testing facility of electrotechnical equipment in South Korea that would have been vented in a business-as-usual scenario. SF₆ that has been used in the testing of gas insulated electrical equipment (GIEE), especially gas circuit breakers (GCB) and gas insulated switchgears (GIS) at KERI, is recovered and then reclaimed at Solvay's SF₆ manufacturing facility located in Ulsan, South Korea.

Brief description of the installed technology and equipments:

Under the project activity, used SF₆ is recovered using a compressor and a piping system and stored in pressurised dedicated recovery cylinders at KERI site. These cylinders are then transported to a SF₆ manufacturing facility, Solvay Fluor Korea (SFK). At the SFK plant, chemical analysis is used to evaluate the moisture, gaseous and solid decomposition of the recovered gas. After checking that used SF₆ gas fulfils specifications for reclamation, the used SF₆ gas is fed into the new SF₆ production stream through a system of injection piping at a rate of 3 to 10 kg gas/hour. The production line will remove impurities and reclaim the gas to the same purity as new SF₆ in order to be sold in the market.

Relevant dates for the project activity:

The project was started on 23 November 2007 and SF₆ recovery equipments at KERI site started commissioning on 29 April 2008.

Total emission reductions achieved in this monitoring period:

The total emission reductions for the monitored period account to 393,742 tCO₂e.

A.2. Location of project activity

>>

Solvay Fluor Korea Co. Ltd: 383, Daejung-Ri, Onsan-Eup, Ulju-kun, Ulsan, Republic of Korea

Coordinates: Latitude 35.426374 Longitude 129.340193

Korea Electrotechnology Research Institute: 28-1 Seongju-dong, Changwon-si, Gyeongsangnamdo, Republic of Korea

Coordinates: Latitude 35.189363 Longitude 128.718224

A.3. Parties and project participant(s)

Party involved (host) indicates a host Party)	Private and/or public entity(ies) project participants (as applicable)	Indicate if the Party involved wishes to be considered as project participant (Yes/No)
Republic of Korea (host)	Solvay Fluor Korea Co. Ltd (Private entity)entity A Public entity A	No
France	Solvay Energy Services SAS (Private entity)	No

Party involved ((host) indicates a host Party)	Private and/or public entity(ies) project participants (as applicable)	Indicate if the Party involved wishes to be considered as project participant (Yes/No)
United Kingdom of Great Britain and Northern Ireland	EcoSecurities International Limited (Withdrawn)	No

A.4. Reference of applied methodology and standardized baseline

>>

AM0079 "Recovery of SF₆ from Gas insulated electrical equipment in testing facilities" (version 2)
 "Tool to calculate baseline, project and/or leakage emissions from electricity consumption" (version 01)

A.5. Crediting period of project activity

>>

Crediting period type: 10 years (Fixed)

Crediting period: 01/04/2011 ~ 31/03/2021

A.6. Contact information of responsible persons/ entities

>>

Project participant and/or responsible person/ entity	<input type="checkbox"/> Project participant <input checked="" type="checkbox"/> Responsible person/ entity for completing the CDM-MR-FORM
Organization name	Solvay Energy Services
Street/P.O. Box	No.74,
Building	FengYi, Ditan Park,
City	DongCheng District, Beijing
State/Region	Beijing
Postcode	100011
Country	China
Telephone	+86 (01) 6426 6008
Fax	+86 (01) 6426 7008
E-mail	river.zhang@solvay.com
Website	www.solvay.com
Contact person	Zhang Shoudou
Title	CO2 Operations Senior Project Manager, Asia
Salutation	Mr.
Last name	Zhang
Middle name	-
First name	ShouDou
Department	CO2 Operation
Mobile	+86 186 0059 8494
Direct fax	+86 (01) 6426 7008
Direct tel.	+86 (01) 6426 6008 Ext. 602
Personal e-mail	river.zhang@solvay.com

SECTION B. Implementation of project activity

B.1. Description of implemented registered project activity

>>

The project was started on 23 November 2007 and the commissioning at the recovery site started on 29 April 2008.

The project consists of two sites, one is the SF₆ recovery site (KERI) and the other is the SF₆ reclamation site (SKF). The operational period for both sites is presented in the Table B.1.

Note that recovery-reclamation cylinder *i* refers to each recovery-reclamation cycle that a cylinder goes through (i.e. from the moment the cylinder is taken to the recovery site until the moment the gas contained in the cylinder has been injected into the reclamation facility) and not the physical cylinder. The project uses bundles of two interconnected gas cylinders as its unit of transport; therefore one cylinder *i* for the purposes of the methodology refers to a “bundle”, or two connected physical cylinders, also referred to as the “cylinder bundle”.

Table B.1 The operational period at KERI and SFK site

<i>i</i>	SF ₆ Recovery at KERI site		SF ₆ Reclamation at SFK site	
	Recovery Period from	Recovery Period to	Reclamation Period from	Reclamation Period to
CDM-12002	29 Mar 2012	19 Jul 2012	08 Aug 2012	23 Aug 2012
CDM-12003	23 Jul 2012	12 Oct 2012	05 Nov 2012	15 Nov 2012
CDM-12004	15 Oct 2012	27 Nov 2012	20 Dec 2012	28 Dec 2012
CDM-12005	28 Nov 2012	12 Jan 2013	02 Feb 2013	12 Feb 2013
CDM-13001	15 Jan 2013	23 Feb 2013	15 Mar 2013	25 Mar 2013
CDM-13002	26 Feb 2013	05 Apr 2013	07 Apr 2013	17 Apr 2013
CDM-13003	08 Apr 2013	17 Apr 2013	18 Apr 2013	22 Apr 2013
CDM-13004	17 Apr 2013	07 May 2013	24 May 2013	03 Jun 2013
CDM-13005	08 May 2013	29 Jun 2013	15 Jul 2013	23 Jul 2013
CDM-13006	01 Jul 2013	20 Jul 2013	28 Jul 2013	08 Aug 2013
CDM-13007	23 Jul 2013	24 Aug 2013	09 Sep 2013	24 Sep 2013
CDM-13008	26 Aug 2013	16 Sep 2013	15 Oct 2013	28 Oct 2013
CDM-13009	19 Mar 2014	15 Apr 2014	18 Apr 2014	24 Apr 2014
CDM-14001	17 Apr 2014	15 May 2014	03 Jun 2014	12 Jun 2014
CDM-14002	16 May 2014	17 Jun 2014	01 Jul 2014	10 Jul 2014
CDM-14003	20 Jun 2014	23 Jul 2014	11 Aug 2014	20 Aug 2014
CDM-14004	25 Jul 2014	24 Sep 2014	06 Oct 2014	15 Oct 2014
CDM-14005	27 Sep 2014	29 Nov 2014	12 Dec 2014	20 Dec 2014
CDM-14006	02 Dec 2014	19 Dec 2014	21 Dec 2014	25 Dec 2014

There was no event occurred during this monitoring period, which may have impact on the applicability of the methodology.

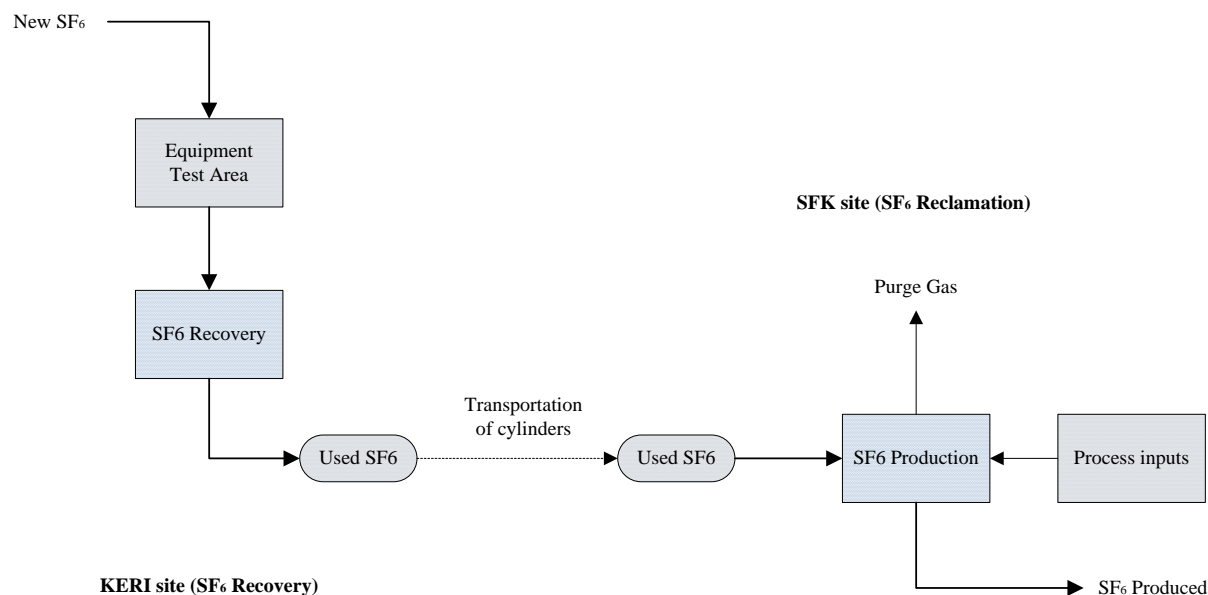


Fig B.1 Diagram of the recovery & reclamation process and the monitoring points

B.2. Post registration changes

B.2.1. Temporary deviations from registered monitoring plan, applied methodology or applied standardized baseline

>>

Not applicable

B.2.2. Corrections

>>

Not applicable

B.2.3. Permanent changes from registered monitoring plan, applied methodology or applied standardized baseline

>>

Not applicable

B.2.4. Changes to project design of registered project activity

>>

Not applicable

B.2.5. Changes to start date of crediting period

>>

Not applicable

B.2.6. Types of changes specific to afforestation or reforestation project activity

>>

Not applicable

SECTION C. Description of monitoring system

>>

The monitoring methodology employed is in line with the approved methodology AM0079 (version 2).

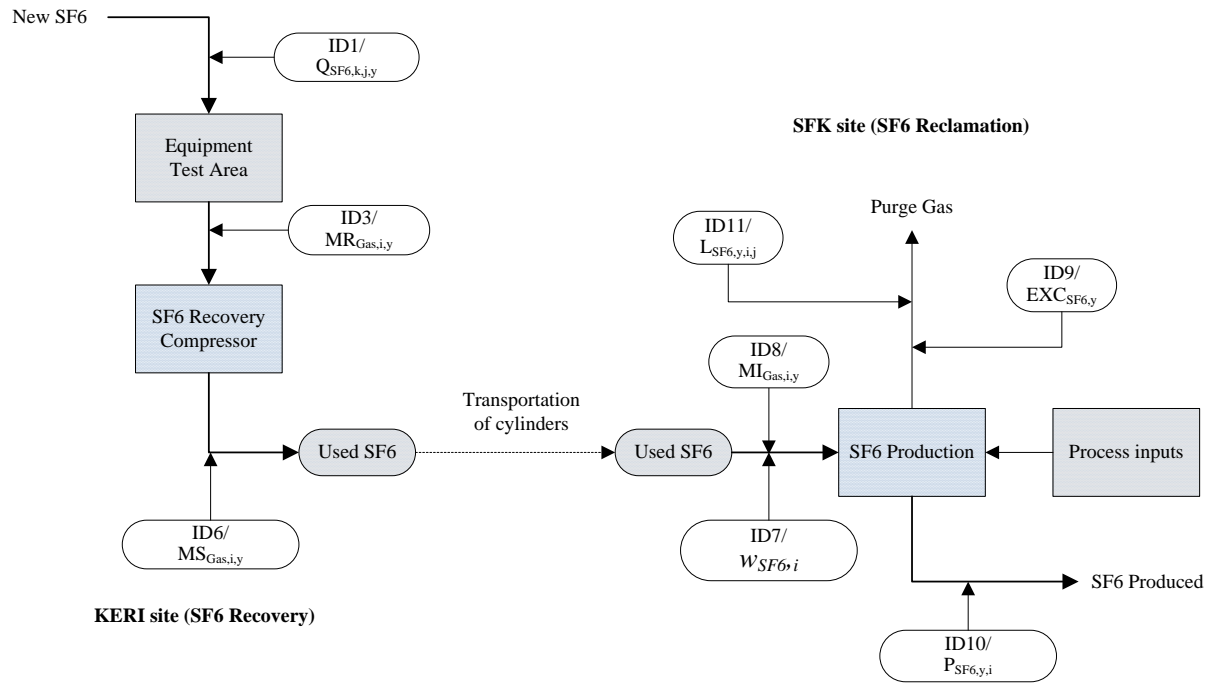


Fig C1. Diagram of the monitoring system

Project Monitoring Plan

Number	Code	Description	Purpose / Use	Location
1	$Q_{SF_6,k,j,y}$	Mass of SF ₆ that is filled into equipment j of category k in year y at the SF ₆ recovery site	Baseline Emissions	SF ₆ recovery site
2	$NT_{P,j,k,y}$	Average number of total testing items where recovery was done per equipment in the project, for category k	Baseline Emissions	SF ₆ recovery site
3	$MR_{Gas,i,y}$	Mass of used gas that is recovered into cylinder i at the SF ₆ recovery site in year y	Baseline Emissions	SF ₆ recovery site
4	i	Sub-index used for each cylinder that completed a recovery-reclamation cycle included in the estimation of emissions avoided for the year y	Baseline Emissions	SF ₆ recovery site, SF ₆ reclamation site
5	n	Number of cylinders that completed a recovery-reclamation cycle in the year y . Only these cylinders are eligible to be included in the estimation of emissions avoided for the year y	Baseline Emissions	SF ₆ recovery site, SF ₆ reclamation site
6	$MS_{Gas,i,y}$	Mass of used gas stored in recovery cylinder bundle i in year y	Baseline Emissions	SF ₆ recovery site
7	$w_{SF_6,i}$	Concentration of SF ₆ in the cylinder i	Baseline Emissions	SF ₆ reclamation site/Laboratory
8	$MI_{Gas,i,y}$	Mass of used gas from cylinder i which is injected for reclamation	Baseline Emissions	SF ₆ reclamation site
9	$EXC_{SF_6,y}$	Quantity of SF ₆ which was being injected to the reclamation facility during exceptional events occurred in year y	Project Emissions	SF ₆ reclamation site
10	$P_{SF_6,i,y}$	Production of SF ₆ during the reclamation period of cylinder i , in year y	Project Emissions	SF ₆ reclamation site
11	$L_{SF_6,y,i,j}$	Amount of SF ₆ loss from point j during the reclamation period of cylinder i in year y	Project Emissions	SF ₆ reclamation site

1. Monitoring organization

Each of the Project sites, the SF₆ recovery site (KERI) and the SF₆ reclamation site (SFK), designates an on-site CDM coordinator. The CDM coordinators have the overall responsibility for the relevant monitoring of emissions reductions of the project activity according to the monitoring plan. The CDM coordinators report regularly to their respective senior management. All other technical staff who are involved in the data collection process have defined roles and responsibilities. The overall monitoring responsibility for both the SFK and KERI sites is with the CDM coordinator of the SF₆ reclamation site (SFK). The standard operation procedures (SOP) were developed for the project and were in place at both recovery and reclamation sites. All the

personnel involved in the CDM activity were properly trained for both the normal project operation and CDM specific activities. CDM training records and SOP training records were both properly retained.

2. Monitoring equipment

The primary equipment used for the monitoring of CDM parameters project is the following:

- (i) Weighing scale: A weighing scale is used for weighing the cylinders in a bundle at the SF₆ recovery site. The scale has been appropriately calibrated.
- (ii) Mass flow meter: Flow meters are used to quantify the amount of SF₆ both at the SF₆ recovery and reclamation sites. The flow meters have been appropriately calibrated.
- (iii) Gas chromatograph: The SF₆ content of the used gas in each cylinder bundle is analysed using a gas chromatography. The equipment has been appropriately calibrated.

Two cylinders filled with used SF₆ as one cylinder bundle are transported to the reclamation site with each cylinder bundle clearly identified and marked. Upon arrival at the SF₆ reclamation site, each cylinder bundle would be analysed, to determine the proportion of SF₆ gas and the proportion of impurities.

3. Data and records management

Data monitored for CDM purposes would be recorded and filed electronically once the cylinder bundle is filled with SF₆. All relevant data were archived electronically, and backed up regularly. Moreover, it will be kept for the full crediting period, plus two years after the end of the crediting period or the last issuance of CERs for this project activity (whichever occurs later). The electronic files would be backed up. The CDM Coordinators are responsible for checking the data quality and are responsible for managing the collection, storage and archiving of all data and records.

4. Quality Assurance

All data collected is checked by the CDM coordinators. Standard Operation Procedures are in place to ensure consistent quality of all data collection, recording, storage, reporting and possible monitoring data adjustments and uncertainties as well as emergencies. Moreover, regular internal audits are conducted to assure that the project is in compliance with operational and CDM requirements.

SECTION D. Data and parameters

D.1. Data and parameters fixed ex ante or at renewal of crediting period

Data / Parameter:	GWP_{SF6}
Unit:	tCO ₂ e/tSF ₆
Description:	Global warming potential of SF ₆
Source of data:	IPCC 2nd assessment report
Value(s) applied:	23,900
Purpose of data:	Baseline emissions calculation
Additional comment:	Shall be updated according to any future COP/MOP decisions

Data / Parameter:	-
Unit:	MW
Description:	Rated capacity of the operating equipment used for project activity of the testing facilities at recovery site and reclamation site in year y
Source of data:	Records at recovery and reclamation sites

Value(s) applied):	At recovery site = 0.0169 corresponds to total capacity of following corresponding equipments, 1. Two Compressors – 10kW 2. Suctioning Pump – 0.6 kW 3. Vacuum Pump – 1.5kW 4. Evaporator – 4.8kW Total: 16.9kW = 0.0169MW At reclamation site = 0.000006, corresponds to the following equipment, 1. One flow meter – 6 W
Purpose of data:	Project emissions calculation
Additional comment:	The specification of the above monitoring instruments will be checked

Data / Parameter:	EF_{elec,j,y}
Unit:	tCO ₂ e/MWh
Description:	Emissions factor for electricity consumed by process “j” in year “y”
Source of data:	The registered PDD
Value(s) applied):	1.30
Purpose of data:	Project emissions calculation
Additional comment:	As per the description in the registered PDD, the emission factor of grid electricity in Korea is around 0.56 tCO ₂ e/MWh. Hence, 1.3 is considered to be a conservative assumption Value to be fixed during all the crediting period

Data / Parameter:	TDL_{j,y}
Unit:	-
Description:	Average technical transmission and distribution losses for providing electricity to source j year y
Source of data:	The registered PDD, and the adopted value is in line with “Tool to calculate baseline, project and/or leakage emissions from electricity consumption”
Value(s) applied):	20%
Purpose of data:	Project emissions calculation
Additional comment:	-

Data / Parameter:	TI_{SF6,used,t}
Unit:	tonnes gas
Description:	Used gas vented during eligible testing item for the historical baseline year
Source of data:	The registered PDD
Value(s) applied):	6.9452
Purpose of data:	Baseline emissions calculation
Additional comment:	-

Data / Parameter:	NT_{BL,k}
Unit:	-
Description:	Average number of eligible testing items where venting occurred per equipment in the baseline, for category k
Source of data:	The registered PDD
Value(s) applied):	For k category 12 - 405kV, NT _{BL,1} : 2.76 For k category 406 - 800 kV, NT _{BL,2} : 1.90

Purpose of data:	Baseline emissions calculation
Additional comment:	-

Data / Parameter:	L_{SF6,hist,j}
Unit:	tonnes SF ₆
Description:	Historical amount of SF ₆ loss from point j, tonnes SF ₆
Source of data:	The registered PDD and it's estimated according to the records of the SF ₆ reclamation site
Value(s) applied:	0.434
Purpose of data:	Project emissions calculation
Additional comment:	-

Data / Parameter:	P_{SF6,hist}
Unit:	tonnes SF ₆
Description:	Production of SF ₆ during the historical period, tonnes SF ₆
Source of data:	The registered PDD and it's estimated according to the records of the SF ₆ reclamation site
Value(s) applied:	748.608
Purpose of data:	Project emissions calculation
Additional comment:	-

D.2. Data and parameters monitored

Data / Parameter:	GWP_{SF6}
Unit:	tCO ₂ e/tSF ₆
Description:	Global warming potential of SF ₆
Measured/ Calculated / Default:	Default
Source of data:	IPCC 2nd assessment report
Value(s) of monitored parameter:	23,900 The value of the parameter is fixed for the first commitment period and shall be updated according to any future COP/MOP decisions
Monitoring equipment:	-
Measuring/ Reading/ Recording frequency:	-
Calculation method (if applicable):	-
QA/QC procedures:	-
Purpose of data:	Baseline emissions calculation
Additional comment:	-

Data / Parameter:	W_{SF6,BL, hist,y}
Unit:	tonnes SF ₆ / tonnes gas
Description:	Concentration of SF ₆ in used gas in the baseline, to be used as a substitute for W _{SF6,hist} where the record of the concentration of SF ₆ in the gas vented in the baseline is not available

Measured/ Calculated / Default:	Measured and calculated The 50% of cylinder bundles (CDM-11003, CDM-11006 and CDM-11007) i that represent the most conservative measurements are used to the parameter definition.																																										
Source of data:	Laboratory test results																																										
Value(s) of monitored parameter:	<table border="1"> <thead> <tr> <th>i</th><th>Value</th></tr> </thead> <tbody> <tr><td>CDM-12002</td><td>98.71%</td></tr> <tr><td>CDM-12003</td><td>99.59%</td></tr> <tr><td>CDM-12004</td><td>99.73%</td></tr> <tr><td>CDM-12005</td><td>99.84%</td></tr> <tr><td>CDM-13001</td><td>99.58%</td></tr> <tr><td>CDM-13002</td><td>99.65%</td></tr> <tr><td>CDM-13003</td><td>99.16%</td></tr> <tr><td>CDM-13004</td><td>99.73%</td></tr> <tr><td>CDM-13005</td><td>99.65%</td></tr> <tr><td>CDM-13006</td><td>99.17%</td></tr> <tr><td>CDM-13007</td><td>99.34%</td></tr> <tr><td>CDM-13008</td><td>99.47%</td></tr> <tr><td>CDM-13009</td><td>99.36%</td></tr> <tr><td>CDM-14001</td><td>98.58%</td></tr> <tr><td>CDM-14002</td><td>98.90%</td></tr> <tr><td>CDM-14003</td><td>99.76%</td></tr> <tr><td>CDM-14004</td><td>99.26%</td></tr> <tr><td>CDM-14005</td><td>98.22%</td></tr> <tr><td>CDM-14006</td><td>99.24%</td></tr> <tr> <td>$w_{SF_6, BL, hist, y}$</td><td>98.95%</td></tr> </tbody> </table> <p>Note: only the data of 9 cylinder bundles of lower SF₆ concentration (out of 19 cylinder bundles) is used for calculation for conservative reason.</p>	i	Value	CDM-12002	98.71%	CDM-12003	99.59%	CDM-12004	99.73%	CDM-12005	99.84%	CDM-13001	99.58%	CDM-13002	99.65%	CDM-13003	99.16%	CDM-13004	99.73%	CDM-13005	99.65%	CDM-13006	99.17%	CDM-13007	99.34%	CDM-13008	99.47%	CDM-13009	99.36%	CDM-14001	98.58%	CDM-14002	98.90%	CDM-14003	99.76%	CDM-14004	99.26%	CDM-14005	98.22%	CDM-14006	99.24%	$w_{SF_6, BL, hist, y}$	98.95%
i	Value																																										
CDM-12002	98.71%																																										
CDM-12003	99.59%																																										
CDM-12004	99.73%																																										
CDM-12005	99.84%																																										
CDM-13001	99.58%																																										
CDM-13002	99.65%																																										
CDM-13003	99.16%																																										
CDM-13004	99.73%																																										
CDM-13005	99.65%																																										
CDM-13006	99.17%																																										
CDM-13007	99.34%																																										
CDM-13008	99.47%																																										
CDM-13009	99.36%																																										
CDM-14001	98.58%																																										
CDM-14002	98.90%																																										
CDM-14003	99.76%																																										
CDM-14004	99.26%																																										
CDM-14005	98.22%																																										
CDM-14006	99.24%																																										
$w_{SF_6, BL, hist, y}$	98.95%																																										
Monitoring equipment:	<table border="1"> <thead> <tr> <th>Monitoring equipment</th><th>Gas Chromatograph</th></tr> </thead> <tbody> <tr><td>Serial No.</td><td>CN10622030</td></tr> <tr><td>Calibration frequency</td><td>2 years</td></tr> <tr><td>Accuracy</td><td>The detection limit of all the gases analysed is at least 50 ppm.</td></tr> <tr><td>Calibration Agency</td><td>SFK</td></tr> <tr><td>Date of calibration</td><td>14 May 2011</td></tr> <tr><td></td><td>20 Feb 2013</td></tr> <tr><td></td><td>04 Dec 2014</td></tr> <tr><td>Validity of calibration</td><td>2 years</td></tr> </tbody> </table>	Monitoring equipment	Gas Chromatograph	Serial No.	CN10622030	Calibration frequency	2 years	Accuracy	The detection limit of all the gases analysed is at least 50 ppm.	Calibration Agency	SFK	Date of calibration	14 May 2011		20 Feb 2013		04 Dec 2014	Validity of calibration	2 years																								
Monitoring equipment	Gas Chromatograph																																										
Serial No.	CN10622030																																										
Calibration frequency	2 years																																										
Accuracy	The detection limit of all the gases analysed is at least 50 ppm.																																										
Calibration Agency	SFK																																										
Date of calibration	14 May 2011																																										
	20 Feb 2013																																										
	04 Dec 2014																																										
Validity of calibration	2 years																																										
Measuring/ Reading/ Recording frequency:	The gas sample is collected every time a cylinder bundle arrives at SFK plant. This sample is analyzed in SFK laboratory using Gas Chromatography tests in accordance with the internal Standard Operational Procedure (SOP). The detection limit of all the gases analysed will be at least 50 ppm.																																										
Calculation method (if applicable):	-																																										
QA/QC procedures:	The SOP uses ASTM D 2685, ASTM D 2029, ASTM D 2284, Din IEC 60376, VDE 0373, ASTM 2472 and/or other sector, national or international Standards.																																										
Purpose of data:	Baseline emissions calculation																																										
Additional comment:	This variable does not exist in equations, however provided in monitoring table to be used as substitute to the variable $w_{SF_6, hist}$, for the cases where the record of the concentration of SF ₆ in the gas vented in the baseline is not available																																										

Data / Parameter:	$Q_{SF_6, k, j, y}$
Unit:	tonnes SF ₆
Description:	Mass of SF ₆ that is filled into equipment j of category k in the year y at the SF ₆ recovery site

Measured/ Calculated / Default:	Measured																							
Source of data:	Records from the SF ₆ recovery site																							
Value(s) of monitored parameter:	Q _{SF6,1} : mass of SF ₆ that is filled into testing equipment of category 1 (12 to 405 KV) Q _{SF6,2} : mass of SF ₆ that is filled into testing equipment of category 2 (406 to 800 KV) Q _{SF6,1} =16.16t, Q _{SF6,2} = 6.12t;																							
Monitoring equipment:	<table border="1"> <thead> <tr> <th>Monitoring equipment</th><th>Mass flow meter</th><th>Mass flow meter</th></tr> </thead> <tbody> <tr> <td>Serial No.</td><td>14122007</td><td>14111339</td></tr> <tr> <td>Calibration frequency</td><td>5years, recommended by FMTech Co., Ltd</td><td>5years, recommended by FMTech Co., Ltd</td></tr> <tr> <td>Accuracy</td><td>±0.100%</td><td>±0.100%</td></tr> <tr> <td>Calibration Agency</td><td>FMTech Co., Ltd</td><td>FMTech Co., Ltd</td></tr> <tr> <td rowspan="2">Date of calibration</td><td>05 Feb 2009</td><td>21 Nov 2008</td></tr> <tr> <td>25 May 2012</td><td>21 May 2012</td></tr> <tr> <td>Validity of calibration</td><td>5 years</td><td>5 years</td></tr> </tbody> </table>	Monitoring equipment	Mass flow meter	Mass flow meter	Serial No.	14122007	14111339	Calibration frequency	5years, recommended by FMTech Co., Ltd	5years, recommended by FMTech Co., Ltd	Accuracy	±0.100%	±0.100%	Calibration Agency	FMTech Co., Ltd	FMTech Co., Ltd	Date of calibration	05 Feb 2009	21 Nov 2008	25 May 2012	21 May 2012	Validity of calibration	5 years	5 years
Monitoring equipment	Mass flow meter	Mass flow meter																						
Serial No.	14122007	14111339																						
Calibration frequency	5years, recommended by FMTech Co., Ltd	5years, recommended by FMTech Co., Ltd																						
Accuracy	±0.100%	±0.100%																						
Calibration Agency	FMTech Co., Ltd	FMTech Co., Ltd																						
Date of calibration	05 Feb 2009	21 Nov 2008																						
	25 May 2012	21 May 2012																						
Validity of calibration	5 years	5 years																						
Measuring/ Reading/ Recording frequency:	Measuring continuously and recording after each injection																							
Calculation method (if applicable):	-																							
QA/QC procedures:	Meters subject to regular calibration according to standard FMT-QG-06																							
Purpose of data:	Baseline emissions calculation																							
Additional comment:	-																							

Data / Parameter:	MR_{Gas,i,y}
Unit:	tonnes gas
Description:	Mass of used SF ₆ recovered into cylinder bundle i at the SF ₆ recovery site in year y
Measured/ Calculated / Default:	Measured
Source of data:	Records from the SF ₆ recovery site

Value(s) of monitored parameter:		i	MR _{Gas} (kg)																
		CDM-12002	1,098.00																
		CDM-12003	1,049.00																
		CDM-12004	1,111.00																
		CDM-12005	1,165.00																
		CDM-13001	1,162.20																
		CDM-13002	1,167.20																
		CDM-13003	547.10																
		CDM-13004	1,108.00																
		CDM-13005	1,157.50																
		CDM-13006	1,185.70																
		CDM-13007	1,108.60																
		CDM-13008	967.10																
		CDM-13009	861.90																
		CDM-14001	1,041.00																
		CDM-14002	999.80																
		CDM-14003	1,098.80																
		CDM-14004	1,058.20																
		CDM-14005	1,045.70																
		CDM-14006	396.79																
	Sum	19,328.59																	
Monitoring equipment:	<table border="1"> <tr> <td>Monitoring equipment</td> <td>Mass flow meter</td> </tr> <tr> <td>Serial No.</td> <td>14069408</td> </tr> <tr> <td>Calibration frequency</td> <td>5years, recommended by FMTech Co., Ltd</td> </tr> <tr> <td>Accuracy</td> <td>±0.100%</td> </tr> <tr> <td>Calibration Agency</td> <td>FMTech Co., Ltd</td> </tr> <tr> <td>Date of calibration</td> <td>27 May 2009</td> </tr> <tr> <td></td> <td>25 May 2012</td> </tr> <tr> <td>Validity of calibration</td> <td>5 years</td> </tr> </table>			Monitoring equipment	Mass flow meter	Serial No.	14069408	Calibration frequency	5years, recommended by FMTech Co., Ltd	Accuracy	±0.100%	Calibration Agency	FMTech Co., Ltd	Date of calibration	27 May 2009		25 May 2012	Validity of calibration	5 years
	Monitoring equipment	Mass flow meter																	
	Serial No.	14069408																	
	Calibration frequency	5years, recommended by FMTech Co., Ltd																	
	Accuracy	±0.100%																	
	Calibration Agency	FMTech Co., Ltd																	
	Date of calibration	27 May 2009																	
		25 May 2012																	
Validity of calibration	5 years																		
Measuring/ Reading/ Recording frequency:	Measuring continuously and recording after each recovery of the SF ₆ being vented																		
Calculation method (if applicable):	-																		
QA/QC procedures:	Meter subject to regular calibration according to standard FMT-QG-06																		
Purpose of data:	Baseline emissions calculation																		
Additional comment:	-																		

Data / Parameter:	MS_{Gas,i,y}
Unit:	Tonnes of gas
Description:	Mass of used gas stored in recovery cylinder bundle i in year y
Measured/ Calculated / Default:	Measured
Source of data:	Records from SF6 recovery site

Value(s) of monitored parameter:	<table border="1"> <thead> <tr> <th>i</th> <th>MS_{Gas} (kg)</th> </tr> </thead> <tbody> <tr><td>CDM-12002</td><td>1,096.00</td></tr> <tr><td>CDM-12003</td><td>1,045.00</td></tr> <tr><td>CDM-12004</td><td>1,108.00</td></tr> <tr><td>CDM-12005</td><td>1,160.50</td></tr> <tr><td>CDM-13001</td><td>1,170.00</td></tr> <tr><td>CDM-13002</td><td>1,175.00</td></tr> <tr><td>CDM-13003</td><td>551.50</td></tr> <tr><td>CDM-13004</td><td>1,114.00</td></tr> <tr><td>CDM-13005</td><td>1,157.50</td></tr> <tr><td>CDM-13006</td><td>1,196.00</td></tr> <tr><td>CDM-13007</td><td>1,095.50</td></tr> <tr><td>CDM-13008</td><td>982.00</td></tr> <tr><td>CDM-13009</td><td>871.00</td></tr> <tr><td>CDM-14001</td><td>1,053.50</td></tr> <tr><td>CDM-14002</td><td>1,009.00</td></tr> <tr><td>CDM-14003</td><td>1,111.00</td></tr> <tr><td>CDM-14004</td><td>1,065.00</td></tr> <tr><td>CDM-14005</td><td>1,055.00</td></tr> <tr><td>CDM-14006</td><td>400.00</td></tr> <tr> <td>Sum</td> <td>19,415.50</td> </tr> </tbody> </table>	i	MS _{Gas} (kg)	CDM-12002	1,096.00	CDM-12003	1,045.00	CDM-12004	1,108.00	CDM-12005	1,160.50	CDM-13001	1,170.00	CDM-13002	1,175.00	CDM-13003	551.50	CDM-13004	1,114.00	CDM-13005	1,157.50	CDM-13006	1,196.00	CDM-13007	1,095.50	CDM-13008	982.00	CDM-13009	871.00	CDM-14001	1,053.50	CDM-14002	1,009.00	CDM-14003	1,111.00	CDM-14004	1,065.00	CDM-14005	1,055.00	CDM-14006	400.00	Sum	19,415.50
i	MS _{Gas} (kg)																																										
CDM-12002	1,096.00																																										
CDM-12003	1,045.00																																										
CDM-12004	1,108.00																																										
CDM-12005	1,160.50																																										
CDM-13001	1,170.00																																										
CDM-13002	1,175.00																																										
CDM-13003	551.50																																										
CDM-13004	1,114.00																																										
CDM-13005	1,157.50																																										
CDM-13006	1,196.00																																										
CDM-13007	1,095.50																																										
CDM-13008	982.00																																										
CDM-13009	871.00																																										
CDM-14001	1,053.50																																										
CDM-14002	1,009.00																																										
CDM-14003	1,111.00																																										
CDM-14004	1,065.00																																										
CDM-14005	1,055.00																																										
CDM-14006	400.00																																										
Sum	19,415.50																																										
Monitoring equipment:	<table border="1"> <thead> <tr> <th>Monitoring equipment</th> <th>Weighing Scale</th> </tr> </thead> <tbody> <tr><td>Serial No.</td><td>FR3</td></tr> <tr><td>Calibration frequency</td><td>2 years</td></tr> <tr><td>Accuracy</td><td>0.5kg/5000kg</td></tr> <tr><td>Calibration Agency</td><td>Pyunghwa HiTech for the 3rd calibration</td></tr> <tr><td>Date of calibration</td><td>05 Jan 2012</td></tr> <tr><td></td><td>12 Dec 2013</td></tr> <tr><td>Validity of calibration</td><td>2 years</td></tr> </tbody> </table>	Monitoring equipment	Weighing Scale	Serial No.	FR3	Calibration frequency	2 years	Accuracy	0.5kg/5000kg	Calibration Agency	Pyunghwa HiTech for the 3 rd calibration	Date of calibration	05 Jan 2012		12 Dec 2013	Validity of calibration	2 years																										
Monitoring equipment	Weighing Scale																																										
Serial No.	FR3																																										
Calibration frequency	2 years																																										
Accuracy	0.5kg/5000kg																																										
Calibration Agency	Pyunghwa HiTech for the 3 rd calibration																																										
Date of calibration	05 Jan 2012																																										
	12 Dec 2013																																										
Validity of calibration	2 years																																										
Measuring/ Reading/ Recording frequency:	Measuring and recording for each bundle of cylinders																																										
Calculation method (if applicable):	-																																										
QA/QC procedures:	Meter subject to regular calibration according to standard KML-CAL-M05 and PH-I003																																										
Purpose of data:	Baseline emissions calculation																																										
Additional comment:	-																																										

Data / Parameter:	MI_{Gas,i,y}
Unit:	Tonnes of gas
Description:	Mass of used gas from the cylinder bundle i injected into the production process for reclamation process in year y
Measured/ Calculated / Default:	Measured
Source of data:	Records from SF ₆ recovery site

Value(s) of monitored parameter:	<table border="1"> <thead> <tr> <th>i</th><th>MI_{Gas} (kg)</th></tr> </thead> <tbody> <tr><td>CDM-12002</td><td>1,110.80</td></tr> <tr><td>CDM-12003</td><td>1,004.30</td></tr> <tr><td>CDM-12004</td><td>1,085.20</td></tr> <tr><td>CDM-12005</td><td>1,057.90</td></tr> <tr><td>CDM-13001</td><td>1,153.30</td></tr> <tr><td>CDM-13002</td><td>1,175.50</td></tr> <tr><td>CDM-13003</td><td>552.10</td></tr> <tr><td>CDM-13004</td><td>1,056.80</td></tr> <tr><td>CDM-13005</td><td>1,208.70</td></tr> <tr><td>CDM-13006</td><td>1,185.70</td></tr> <tr><td>CDM-13007</td><td>1,073.90</td></tr> <tr><td>CDM-13008</td><td>875.20</td></tr> <tr><td>CDM-13009</td><td>817.00</td></tr> <tr><td>CDM-14001</td><td>983.10</td></tr> <tr><td>CDM-14002</td><td>944.00</td></tr> <tr><td>CDM-14003</td><td>941.00</td></tr> <tr><td>CDM-14004</td><td>982.00</td></tr> <tr><td>CDM-14005</td><td>971.00</td></tr> <tr><td>CDM-14006</td><td>386.00</td></tr> <tr> <td>Sum</td><td>18,563.50</td></tr> </tbody> </table>	i	MI _{Gas} (kg)	CDM-12002	1,110.80	CDM-12003	1,004.30	CDM-12004	1,085.20	CDM-12005	1,057.90	CDM-13001	1,153.30	CDM-13002	1,175.50	CDM-13003	552.10	CDM-13004	1,056.80	CDM-13005	1,208.70	CDM-13006	1,185.70	CDM-13007	1,073.90	CDM-13008	875.20	CDM-13009	817.00	CDM-14001	983.10	CDM-14002	944.00	CDM-14003	941.00	CDM-14004	982.00	CDM-14005	971.00	CDM-14006	386.00	Sum	18,563.50
i	MI _{Gas} (kg)																																										
CDM-12002	1,110.80																																										
CDM-12003	1,004.30																																										
CDM-12004	1,085.20																																										
CDM-12005	1,057.90																																										
CDM-13001	1,153.30																																										
CDM-13002	1,175.50																																										
CDM-13003	552.10																																										
CDM-13004	1,056.80																																										
CDM-13005	1,208.70																																										
CDM-13006	1,185.70																																										
CDM-13007	1,073.90																																										
CDM-13008	875.20																																										
CDM-13009	817.00																																										
CDM-14001	983.10																																										
CDM-14002	944.00																																										
CDM-14003	941.00																																										
CDM-14004	982.00																																										
CDM-14005	971.00																																										
CDM-14006	386.00																																										
Sum	18,563.50																																										
Monitoring equipment:	<table border="1"> <thead> <tr> <th>Monitoring equipment</th><th>Mass flow meter</th></tr> </thead> <tbody> <tr> <td>Serial No.</td><td>14014422</td></tr> <tr> <td>Calibration frequency</td><td>5years, recommended by FMTech Co., Ltd</td></tr> <tr> <td>Accuracy</td><td>±0.100%</td></tr> <tr> <td>Calibration Agency</td><td>FMTech Co., Ltd</td></tr> <tr> <td>Date of calibration</td><td>08 Jun 2009</td></tr> <tr> <td></td><td>21 May 2012</td></tr> <tr> <td>Validity of calibration</td><td>5 years</td></tr> </tbody> </table>	Monitoring equipment	Mass flow meter	Serial No.	14014422	Calibration frequency	5years, recommended by FMTech Co., Ltd	Accuracy	±0.100%	Calibration Agency	FMTech Co., Ltd	Date of calibration	08 Jun 2009		21 May 2012	Validity of calibration	5 years																										
Monitoring equipment	Mass flow meter																																										
Serial No.	14014422																																										
Calibration frequency	5years, recommended by FMTech Co., Ltd																																										
Accuracy	±0.100%																																										
Calibration Agency	FMTech Co., Ltd																																										
Date of calibration	08 Jun 2009																																										
	21 May 2012																																										
Validity of calibration	5 years																																										
Measuring/ Reading/ Recording frequency:	Measuring continuously and recording after each injection of the SF ₆ into the SF ₆ production line																																										
Calculation method (if applicable):	-																																										
QA/QC procedures:	Meter subject to regular calibration according to standard FMT-QG-06																																										
Purpose of data:	Baseline emissions calculation																																										
Additional comment:	-																																										

Data / Parameter:	L_{SF6,y,i,j}
Unit:	Tonnes SF ₆
Description:	Amount of SF ₆ loss from point j during the reclamation period of cylinder i in year y
Measured/ Calculated / Default:	Measured The measurement period is the period in which cylinder i is connected for gas reclamation
Source of data:	Records from SF ₆ reclamation site

Value(s) of monitored parameter:	<table border="1"> <thead> <tr> <th>i</th><th>$L_{SF_6,y,i,j}$ (kg)</th></tr> </thead> <tbody> <tr><td>CDM-12002</td><td>61.15</td></tr> <tr><td>CDM-12003</td><td>99.23</td></tr> <tr><td>CDM-12004</td><td>69.82</td></tr> <tr><td>CDM-12005</td><td>49.26</td></tr> <tr><td>CDM-13001</td><td>114.69</td></tr> <tr><td>CDM-13002</td><td>112.86</td></tr> <tr><td>CDM-13003</td><td>78.45</td></tr> <tr><td>CDM-13004</td><td>26.68</td></tr> <tr><td>CDM-13005</td><td>3.98</td></tr> <tr><td>CDM-13006</td><td>1.19</td></tr> <tr><td>CDM-13007</td><td>9.71</td></tr> <tr><td>CDM-13008</td><td>56.95</td></tr> <tr><td>CDM-13009</td><td>47.36</td></tr> <tr><td>CDM-14001</td><td>58.58</td></tr> <tr><td>CDM-14002</td><td>52.38</td></tr> <tr><td>CDM-14003</td><td>53.74</td></tr> <tr><td>CDM-14004</td><td>10.12</td></tr> <tr><td>CDM-14005</td><td>5.99</td></tr> <tr><td>CDM-14006</td><td>0.00</td></tr> </tbody> </table>	i	$L_{SF_6,y,i,j}$ (kg)	CDM-12002	61.15	CDM-12003	99.23	CDM-12004	69.82	CDM-12005	49.26	CDM-13001	114.69	CDM-13002	112.86	CDM-13003	78.45	CDM-13004	26.68	CDM-13005	3.98	CDM-13006	1.19	CDM-13007	9.71	CDM-13008	56.95	CDM-13009	47.36	CDM-14001	58.58	CDM-14002	52.38	CDM-14003	53.74	CDM-14004	10.12	CDM-14005	5.99	CDM-14006	0.00
i	$L_{SF_6,y,i,j}$ (kg)																																								
CDM-12002	61.15																																								
CDM-12003	99.23																																								
CDM-12004	69.82																																								
CDM-12005	49.26																																								
CDM-13001	114.69																																								
CDM-13002	112.86																																								
CDM-13003	78.45																																								
CDM-13004	26.68																																								
CDM-13005	3.98																																								
CDM-13006	1.19																																								
CDM-13007	9.71																																								
CDM-13008	56.95																																								
CDM-13009	47.36																																								
CDM-14001	58.58																																								
CDM-14002	52.38																																								
CDM-14003	53.74																																								
CDM-14004	10.12																																								
CDM-14005	5.99																																								
CDM-14006	0.00																																								
Monitoring equipment:	<table border="1"> <thead> <tr> <th>Monitoring equipment</th><th>Mass flow meter</th></tr> </thead> <tbody> <tr> <td>Serial No.</td><td>14014074</td></tr> <tr> <td>Calibration frequency</td><td>5years, recommended by FMTech Co., Ltd</td></tr> <tr> <td>Accuracy</td><td>±0.35%</td></tr> <tr> <td>Calibration Agency</td><td>FMTech Co., Ltd</td></tr> <tr> <td>Date of calibration</td><td>08 Jun 2009</td></tr> <tr> <td></td><td>24 May 2012</td></tr> <tr> <td>Validity of calibration</td><td>5 years</td></tr> </tbody> </table> <table border="1"> <thead> <tr> <th>Monitoring equipment</th><th>Gas Chromatograph</th></tr> </thead> <tbody> <tr> <td>Serial No.</td><td>CN10622030</td></tr> <tr> <td>Calibration frequency</td><td>2 years</td></tr> <tr> <td>Accuracy</td><td>The detection limit of all the gases analysed is at least 50 ppm.</td></tr> <tr> <td>Calibration Agency</td><td>SFK</td></tr> <tr> <td>Date of calibration</td><td>14 May 2011</td></tr> <tr> <td></td><td>20 Feb 2013</td></tr> <tr> <td></td><td>04 Dec 2014</td></tr> <tr> <td>Validity of calibration</td><td>2 years</td></tr> </tbody> </table>	Monitoring equipment	Mass flow meter	Serial No.	14014074	Calibration frequency	5years, recommended by FMTech Co., Ltd	Accuracy	±0.35%	Calibration Agency	FMTech Co., Ltd	Date of calibration	08 Jun 2009		24 May 2012	Validity of calibration	5 years	Monitoring equipment	Gas Chromatograph	Serial No.	CN10622030	Calibration frequency	2 years	Accuracy	The detection limit of all the gases analysed is at least 50 ppm.	Calibration Agency	SFK	Date of calibration	14 May 2011		20 Feb 2013		04 Dec 2014	Validity of calibration	2 years						
Monitoring equipment	Mass flow meter																																								
Serial No.	14014074																																								
Calibration frequency	5years, recommended by FMTech Co., Ltd																																								
Accuracy	±0.35%																																								
Calibration Agency	FMTech Co., Ltd																																								
Date of calibration	08 Jun 2009																																								
	24 May 2012																																								
Validity of calibration	5 years																																								
Monitoring equipment	Gas Chromatograph																																								
Serial No.	CN10622030																																								
Calibration frequency	2 years																																								
Accuracy	The detection limit of all the gases analysed is at least 50 ppm.																																								
Calibration Agency	SFK																																								
Date of calibration	14 May 2011																																								
	20 Feb 2013																																								
	04 Dec 2014																																								
Validity of calibration	2 years																																								
Measuring/ Reading/ Recording frequency:	Measuring continuously and recording daily																																								
Calculation method (if applicable):	$L_{SF_6,y,i,j}$ = Daily purge mass amount of gas × Volume% of SF ₆																																								
QA/QC procedures:	Meter subject to regular calibration according to standard FMT-QG-06																																								
Purpose of data:	Project emissions reduction																																								
Additional comment:	-																																								

Data / Parameter:	$P_{SF_6,y,i}$																																								
Unit:	Tonnes SF_6																																								
Description:	Production of SF_6 during the reclamation period of cylinder i , in year y																																								
Measured/ Calculated / Default:	Measured																																								
Source of data:	Records from regular production monitoring at SF_6 reclamation site																																								
Value(s) of monitored parameter:	<table border="1"> <thead> <tr> <th>i</th><th>$P_{SF_6,y,i}$ (kg)</th></tr> </thead> <tbody> <tr><td>CDM-12002</td><td>77,349</td></tr> <tr><td>CDM-12003</td><td>47,683</td></tr> <tr><td>CDM-12004</td><td>43,805</td></tr> <tr><td>CDM-12005</td><td>53,043</td></tr> <tr><td>CDM-13001</td><td>49,106</td></tr> <tr><td>CDM-13002</td><td>49,507</td></tr> <tr><td>CDM-13003</td><td>21,936</td></tr> <tr><td>CDM-13004</td><td>24,335</td></tr> <tr><td>CDM-13005</td><td>23,722</td></tr> <tr><td>CDM-13006</td><td>33,226</td></tr> <tr><td>CDM-13007</td><td>72,663</td></tr> <tr><td>CDM-13008</td><td>57,712</td></tr> <tr><td>CDM-13009</td><td>33,284</td></tr> <tr><td>CDM-14001</td><td>48,700</td></tr> <tr><td>CDM-14002</td><td>42,300</td></tr> <tr><td>CDM-14003</td><td>44,379</td></tr> <tr><td>CDM-14004</td><td>33,303</td></tr> <tr><td>CDM-14005</td><td>22,374</td></tr> <tr><td>CDM-14006</td><td>13,549</td></tr> </tbody> </table>	i	$P_{SF_6,y,i}$ (kg)	CDM-12002	77,349	CDM-12003	47,683	CDM-12004	43,805	CDM-12005	53,043	CDM-13001	49,106	CDM-13002	49,507	CDM-13003	21,936	CDM-13004	24,335	CDM-13005	23,722	CDM-13006	33,226	CDM-13007	72,663	CDM-13008	57,712	CDM-13009	33,284	CDM-14001	48,700	CDM-14002	42,300	CDM-14003	44,379	CDM-14004	33,303	CDM-14005	22,374	CDM-14006	13,549
i	$P_{SF_6,y,i}$ (kg)																																								
CDM-12002	77,349																																								
CDM-12003	47,683																																								
CDM-12004	43,805																																								
CDM-12005	53,043																																								
CDM-13001	49,106																																								
CDM-13002	49,507																																								
CDM-13003	21,936																																								
CDM-13004	24,335																																								
CDM-13005	23,722																																								
CDM-13006	33,226																																								
CDM-13007	72,663																																								
CDM-13008	57,712																																								
CDM-13009	33,284																																								
CDM-14001	48,700																																								
CDM-14002	42,300																																								
CDM-14003	44,379																																								
CDM-14004	33,303																																								
CDM-14005	22,374																																								
CDM-14006	13,549																																								
Monitoring equipment:	<p>There are two storage tanks, so called daily tank, which are operated alternatively day by day. Daily production amount is stored to A and B tank alternatively day by day for quality check and is transferred to a third big storage tank (weekly tanks) for SF_6 filling work.</p> <p>As SF_6 is a liquefied gas in the storage tank, it is difficult to measure the amount directly so by measuring the difference of tank level (volume), temperature and pressure of daily tank between certain time point of the day to the time point of next day, the daily production amount is calculated.</p>																																								
Measuring/ Reading/ Recording frequency:	Measured and recorded daily																																								
Calculation method (if applicable):	-																																								
QA/QC procedures:	<p>The measurement period is the period in which cylinder i is connected for gas reclamation, as measured in days. Production to be measured daily.</p> <p>The production measurement will follow the Specific Operational Procedure (SOP) SFK-SOP-SF6-086, where is defined the detailed procedure, the responsible for measuring it, the reporting system and the equipments(Level gauge, pressure, temperature of daily tank) used to measure. The accuracy of each monitoring equipment will be at least:</p> <p><input type="checkbox"/> Level gauge : $\pm 50\text{mm}$</p> <p><input type="checkbox"/> Pressure gauge : $\pm 0.5\%$</p> <p><input type="checkbox"/> Temperature : $\pm 0.5\%$</p>																																								

Purpose of data:	Project emissions reduction
Additional comment:	-

Data / Parameter:	NT_{PJ,k,y}						
Unit:	N/A						
Description:	Average number of total testing items where recovery was done per equipment in the project, for category k						
Measured/ Calculated / Default:	Calculated						
Source of data:	Records from the SF ₆ recovery site						
Value(s) of monitored parameter:	<table border="1"> <tr> <td></td><td>NT_{PJ,i}</td></tr> <tr> <td>NT_{PJ,1} (for category: 12~405 kV)</td><td>2.97</td></tr> <tr> <td>NT_{PJ,2} (for category: 406~800 kV)</td><td>2.00</td></tr> </table>		NT _{PJ,i}	NT _{PJ,1} (for category: 12~405 kV)	2.97	NT _{PJ,2} (for category: 406~800 kV)	2.00
	NT _{PJ,i}						
NT _{PJ,1} (for category: 12~405 kV)	2.97						
NT _{PJ,2} (for category: 406~800 kV)	2.00						
Monitoring equipment:	-						
Measuring/ Reading/ Recording frequency:	-						
Calculation method (if applicable):	<p>Count the number of testing items where gas was recovered for the year y, by referring to the testing records compiled during the project year at the SF₆ recovery site.</p> <p>Count the number of equipment in each category for the year y, by referring to the testing records compiled during the project year at the SF₆ recovery site.</p> <p>For each category k, make an average of the counts for equipment in that category to derive NT_{PJ,k,y}</p>						
QA/QC procedures:	-						
Purpose of data:	Baseline emissions reduction						
Additional comment:	-						

Data / Parameter:	i
Unit:	N/A
Description:	Sub-index used for each cylinder bundle that completed a recovery-reclamation cycle included in the estimation of emissions avoided for the year y
Measured/ Calculated / Default:	-
Source of data:	Records from the SF ₆ recovery site and SF ₆ reclamation site

Value(s) of monitored parameter:	<p>The relation between the Sub-index “i” and the number of cylinder bundle “n” is illustrated below.</p> <table border="1"> <thead> <tr> <th>i</th><th>n</th></tr> </thead> <tbody> <tr><td>CDM-12002</td><td>0003</td></tr> <tr><td>CDM-12003</td><td>0004</td></tr> <tr><td>CDM-12004</td><td>0001</td></tr> <tr><td>CDM-12005</td><td>0002</td></tr> <tr><td>CDM-13001</td><td>0001</td></tr> <tr><td>CDM-13002</td><td>0002</td></tr> <tr><td>CDM-13003</td><td>0001</td></tr> <tr><td>CDM-13004</td><td>0002</td></tr> <tr><td>CDM-13005</td><td>0001</td></tr> <tr><td>CDM-13006</td><td>0002</td></tr> <tr><td>CDM-13007</td><td>0001</td></tr> <tr><td>CDM-13008</td><td>0002</td></tr> <tr><td>CDM-13009</td><td>0004</td></tr> <tr><td>CDM-14001</td><td>0002</td></tr> <tr><td>CDM-14002</td><td>0004</td></tr> <tr><td>CDM-14003</td><td>0004</td></tr> <tr><td>CDM-14004</td><td>0001</td></tr> <tr><td>CDM-14005</td><td>0004</td></tr> <tr><td>CDM-14006</td><td>0001</td></tr> </tbody> </table>	i	n	CDM-12002	0003	CDM-12003	0004	CDM-12004	0001	CDM-12005	0002	CDM-13001	0001	CDM-13002	0002	CDM-13003	0001	CDM-13004	0002	CDM-13005	0001	CDM-13006	0002	CDM-13007	0001	CDM-13008	0002	CDM-13009	0004	CDM-14001	0002	CDM-14002	0004	CDM-14003	0004	CDM-14004	0001	CDM-14005	0004	CDM-14006	0001
i	n																																								
CDM-12002	0003																																								
CDM-12003	0004																																								
CDM-12004	0001																																								
CDM-12005	0002																																								
CDM-13001	0001																																								
CDM-13002	0002																																								
CDM-13003	0001																																								
CDM-13004	0002																																								
CDM-13005	0001																																								
CDM-13006	0002																																								
CDM-13007	0001																																								
CDM-13008	0002																																								
CDM-13009	0004																																								
CDM-14001	0002																																								
CDM-14002	0004																																								
CDM-14003	0004																																								
CDM-14004	0001																																								
CDM-14005	0004																																								
CDM-14006	0001																																								
Monitoring equipment:	-																																								
Measuring/ Reading/ Recording frequency:	-																																								
Calculation method (if applicable):	-																																								
QA/QC procedures:	When used gas is filled into a recovery cylinder bundle, weighed, and sent for reclaiming, the activity should be noted using the cylinder bundle identification information																																								
Purpose of data:	-																																								
Additional comment:	<p>Recovery cylinder bundles must be visibly distinguishable from new gas cylinder bundles.</p> <p>Records from both sites should coincide</p> <p>An individual cylinder bundle may be used more than one time per year, i.e. it may go through the recovery-reclamation process more than once. However, the labelling will show the unique identity of each cylinder bundle as it is involved in one recovery- reclamation process</p>																																								

Data / Parameter:	n
Unit:	N/A
Description:	Number of cylinder bundles that completed a recovery-reclamation cycle in the year y. Only these cylinder bundles are eligible to be included in the estimation of emissions avoided for the year y
Measured/ Calculated / Default:	-
Source of data:	Records from the SF ₆ recovery site and SF ₆ reclamation site

Value(s) of monitored parameter:	<p>The relation between the Sub-index “i” and the number of cylinder bundle “n” is illustrated below.</p> <table border="1"> <thead> <tr> <th>i</th><th>n</th></tr> </thead> <tbody> <tr><td>CDM-12002</td><td>0003</td></tr> <tr><td>CDM-12003</td><td>0004</td></tr> <tr><td>CDM-12004</td><td>0001</td></tr> <tr><td>CDM-12005</td><td>0002</td></tr> <tr><td>CDM-13001</td><td>0001</td></tr> <tr><td>CDM-13002</td><td>0002</td></tr> <tr><td>CDM-13003</td><td>0001</td></tr> <tr><td>CDM-13004</td><td>0002</td></tr> <tr><td>CDM-13005</td><td>0001</td></tr> <tr><td>CDM-13006</td><td>0002</td></tr> <tr><td>CDM-13007</td><td>0001</td></tr> <tr><td>CDM-13008</td><td>0002</td></tr> <tr><td>CDM-13009</td><td>0004</td></tr> <tr><td>CDM-14001</td><td>0002</td></tr> <tr><td>CDM-14002</td><td>0004</td></tr> <tr><td>CDM-14003</td><td>0004</td></tr> <tr><td>CDM-14004</td><td>0001</td></tr> <tr><td>CDM-14005</td><td>0004</td></tr> <tr><td>CDM-14006</td><td>0001</td></tr> </tbody> </table>	i	n	CDM-12002	0003	CDM-12003	0004	CDM-12004	0001	CDM-12005	0002	CDM-13001	0001	CDM-13002	0002	CDM-13003	0001	CDM-13004	0002	CDM-13005	0001	CDM-13006	0002	CDM-13007	0001	CDM-13008	0002	CDM-13009	0004	CDM-14001	0002	CDM-14002	0004	CDM-14003	0004	CDM-14004	0001	CDM-14005	0004	CDM-14006	0001
i	n																																								
CDM-12002	0003																																								
CDM-12003	0004																																								
CDM-12004	0001																																								
CDM-12005	0002																																								
CDM-13001	0001																																								
CDM-13002	0002																																								
CDM-13003	0001																																								
CDM-13004	0002																																								
CDM-13005	0001																																								
CDM-13006	0002																																								
CDM-13007	0001																																								
CDM-13008	0002																																								
CDM-13009	0004																																								
CDM-14001	0002																																								
CDM-14002	0004																																								
CDM-14003	0004																																								
CDM-14004	0001																																								
CDM-14005	0004																																								
CDM-14006	0001																																								
Monitoring equipment:	-																																								
Measuring/ Reading/ Recording frequency:	-																																								
Calculation method (if applicable):	-																																								
QA/QC procedures:	The site keeps records of each cylinder bundle i for which recovery and reclamation has been completed. All individual identification and dates information are available for a clear definition of each year y the process was finished.																																								
Purpose of data:	-																																								
Additional comment:	Records from both sites should coincide. In the case in which a cylinder bundle has not completed reclamation in year y, it will be accounted in year y+1 as mentioned in Step 2 of baseline emissions of the methodology																																								

Data / Parameter:	$W_{SF_6,i}$
Unit:	Tonnes SF ₆ / tonnes gas
Description:	Concentration of SF ₆ in the cylinder bundle i
Measured/ Calculated / Default:	Measured
Source of data:	laboratory test result

Value(s) of monitored parameter:	i	$w_{SF_6,i}$
	CDM-12002	98.71%
	CDM-12003	99.59%
	CDM-12004	99.73%
	CDM-12005	99.84%
	CDM-13001	99.58%
	CDM-13002	99.65%
	CDM-13003	99.16%
	CDM-13004	99.73%
	CDM-13005	99.65%
	CDM-13006	99.17%
	CDM-13007	99.34%
	CDM-13008	99.47%
	CDM-13009	99.36%
	CDM-14001	98.58%
	CDM-14002	98.90%
	CDM-14003	99.76%
	CDM-14004	99.26%
CDM-14005	98.22%	
CDM-14006	99.24%	

Monitoring equipment:	Monitoring equipment	Gas Chromatograph
	Serial No.	CN10622030
	Calibration frequency	2 years
	Accuracy	The detection limit of all the gases analysed is at least 50 ppm.
	Calibration Agency	SFK
	Date of calibration	14 May 2011
		20 Feb 2013
		04 Dec 2014
Validity of calibration	2 years	

Measuring/ Reading/ Recording frequency:	The gas sample is collected every time a cylinder bundle arrives in SFK plant. This sample is analysed in SFK laboratory using Gas Chromatography tests in accordance with the internal Standard Operational Procedure (SOP). The detection limit of all the gases analysed is at least 50 ppm.
Calculation method (if applicable):	-
QA/QC procedures:	The SOP uses ASTM D 2685, ASTM D 2029, ASTM D 2284, Din IEC 60376, VDE 0373, ASTM 2472 and/or other sector, national or international Standards.
Purpose of data:	Baseline emissions calculation
Additional comment:	Given that the recovery and reclamation process are batch processes, and that the concentration of SF_6 in the used gas remains constant after recovery and before reclamation, $w_{SF_6,i}$ needs to be measured only once per cylinder bundle to determine the proportion of SF_6 in the gas contained in that cylinder bundle.

Data / Parameter:	$PE_{TF,y}$
Unit:	tCO ₂ e
Description:	Project emissions as a result of increased electricity consumption at the testing facility attributable to project activity in year y

Measured/ Calculated / Default:	Calculated
Source of data:	Records from SF ₆ testing facility
Value(s) of monitored parameter:	619.45
Monitoring equipment:	-
Measuring/ Reading/ Recording frequency:	-
Calculation method (if applicable):	Follow the "Tool to calculate baseline, project and/or leakage emissions from electricity consumption"; Electricity consumption approximated by the rated capacity of the operating equipment multiplied by operating hours of the equipment. Please refer to Section E.2
QA/QC procedures:	-
Purpose of data:	Project emissions calculation
Additional comment:	

Data / Parameter:	PE_{RF,y}
Unit:	tCO ₂ e
Description:	Project emissions as a result of increased electricity consumption at the reclamation facility attributable to project activity in year y
Measured/ Calculated / Default:	Calculated
Source of data:	Records from SF ₆ reclamation facility
Value(s) of monitored parameter:	0.22
Monitoring equipment:	-
Measuring/ Reading/ Recording frequency:	-
Calculation method (if applicable):	Electricity consumption approximated by the rated capacity of the operating equipment multiplied by operating hours of the equipment and a conservative approach of 8760 hours per year is used. Please refer to Section E.2
QA/QC procedures:	-
Purpose of data:	Project emissions calculation
Additional comment:	-

Data / Parameter:	EXC_{SF6,y}
Unit:	Tonnes SF ₆
Description:	Quantity of SF ₆ which was being injected to the reclamation facility during exceptional events occurred in year y
Measured/ Calculated / Default:	Measured
Source of data:	Records from SF ₆ reclamation facility

Value(s) of monitored parameter:	<table border="1"> <thead> <tr> <th data-bbox="687 152 983 210">i</th><th data-bbox="983 152 1238 210">EXC_{SF₆,y} (kg)</th></tr> </thead> <tbody> <tr><td>CDM-12002</td><td>0.00</td></tr> <tr><td>CDM-12003</td><td>89.20</td></tr> <tr><td>CDM-12004</td><td>0.00</td></tr> <tr><td>CDM-12005</td><td>24.90</td></tr> <tr><td>CDM-13001</td><td>25.00</td></tr> <tr><td>CDM-13002</td><td>0.00</td></tr> <tr><td>CDM-13003</td><td>0.00</td></tr> <tr><td>CDM-13004</td><td>24.90</td></tr> <tr><td>CDM-13005</td><td>0.00</td></tr> <tr><td>CDM-13006</td><td>24.90</td></tr> <tr><td>CDM-13007</td><td>0.00</td></tr> <tr><td>CDM-13008</td><td>10.80</td></tr> <tr><td>CDM-13009</td><td>32.60</td></tr> <tr><td>CDM-14001</td><td>0.00</td></tr> <tr><td>CDM-14002</td><td>20.00</td></tr> <tr><td>CDM-14003</td><td>24.00</td></tr> <tr><td>CDM-14004</td><td>22.00</td></tr> <tr><td>CDM-14005</td><td>25.00</td></tr> <tr><td>CDM-14006</td><td>0.00</td></tr> <tr> <td>Sum</td><td>139.10</td></tr> </tbody> </table>	i	EXC _{SF₆,y} (kg)	CDM-12002	0.00	CDM-12003	89.20	CDM-12004	0.00	CDM-12005	24.90	CDM-13001	25.00	CDM-13002	0.00	CDM-13003	0.00	CDM-13004	24.90	CDM-13005	0.00	CDM-13006	24.90	CDM-13007	0.00	CDM-13008	10.80	CDM-13009	32.60	CDM-14001	0.00	CDM-14002	20.00	CDM-14003	24.00	CDM-14004	22.00	CDM-14005	25.00	CDM-14006	0.00	Sum	139.10
i	EXC _{SF₆,y} (kg)																																										
CDM-12002	0.00																																										
CDM-12003	89.20																																										
CDM-12004	0.00																																										
CDM-12005	24.90																																										
CDM-13001	25.00																																										
CDM-13002	0.00																																										
CDM-13003	0.00																																										
CDM-13004	24.90																																										
CDM-13005	0.00																																										
CDM-13006	24.90																																										
CDM-13007	0.00																																										
CDM-13008	10.80																																										
CDM-13009	32.60																																										
CDM-14001	0.00																																										
CDM-14002	20.00																																										
CDM-14003	24.00																																										
CDM-14004	22.00																																										
CDM-14005	25.00																																										
CDM-14006	0.00																																										
Sum	139.10																																										
Monitoring equipment:	<table border="1"> <thead> <tr> <th data-bbox="544 1077 839 1111">Monitoring equipment</th><th data-bbox="839 1077 1378 1111">Mass flow meter</th></tr> </thead> <tbody> <tr> <td data-bbox="544 1111 839 1144">Serial No.</td><td data-bbox="839 1111 1378 1144">14014422</td></tr> <tr> <td data-bbox="544 1144 839 1200">Calibration frequency</td><td data-bbox="839 1144 1378 1200">5years, recommended by FMTech Co., Ltd</td></tr> <tr> <td data-bbox="544 1200 839 1234">Accuracy</td><td data-bbox="839 1200 1378 1234">±0.100%</td></tr> <tr> <td data-bbox="544 1234 839 1267">Calibration Agency</td><td data-bbox="839 1234 1378 1267">FMTech Co., Ltd</td></tr> <tr> <td data-bbox="544 1267 839 1301" rowspan="2">Date of calibration</td><td data-bbox="839 1267 1378 1301">08 Jun 2009</td></tr> <tr> <td data-bbox="839 1301 1378 1335">21 May 2012</td></tr> <tr> <td data-bbox="544 1335 839 1368">Validity of calibration</td><td data-bbox="839 1335 1378 1368">5 years</td></tr> </tbody> </table>	Monitoring equipment	Mass flow meter	Serial No.	14014422	Calibration frequency	5years, recommended by FMTech Co., Ltd	Accuracy	±0.100%	Calibration Agency	FMTech Co., Ltd	Date of calibration	08 Jun 2009	21 May 2012	Validity of calibration	5 years																											
Monitoring equipment	Mass flow meter																																										
Serial No.	14014422																																										
Calibration frequency	5years, recommended by FMTech Co., Ltd																																										
Accuracy	±0.100%																																										
Calibration Agency	FMTech Co., Ltd																																										
Date of calibration	08 Jun 2009																																										
	21 May 2012																																										
Validity of calibration	5 years																																										
Measuring/ Reading/ Recording frequency:	<p>The project proponent records the date and time of any exceptional event that occurs in year y that results in the unusual emission of SF₆</p> <p>The SF₆ quantity (EXC_{SF₆,y}) from any reclamation that coincides with the event must be considered as project emissions (PE_{EXC,y})</p> <p>For example, if a cylinder bundle of used gas was being reclaimed when the event occurred, then the total amount of gas injected from the cylinder bundle into the reclamation line between 5 hours prior to the event and until the time that the injection line was shut off must be considered as EXC_{SF₆,y}.</p> <p>The total amount of gas is to be taken from the continuous measurement of the flow meter on the injection line used to determine MI_{Gas,i}.</p> <p>The concentration of the SF₆ was considered as 1 for the calculation of EXC_{SF₆,y}, and this is conservative.</p>																																										
Calculation method (if applicable):	-																																										
QA/QC procedures:	-																																										
Purpose of data:	Project emissions calculation																																										
Additional comment:	-																																										

D.3. Implementation of sampling plan

>>

Not applicable.

SECTION E. Calculation of emission reductions or GHG removals by sinks**E.1. Calculation of baseline emissions or baseline net GHG removals by sinks**

>>

Baseline Emission Reduction Calculations

In this section the baseline emission reduction calculation equation is explained. The formula for calculation of Emission Reductions is:

$$BE_y = MIN\{V_{SF6,hist}, DFT_y * EA_y\} * GWP_{SF6}$$

Where:

BE_y	=	Baseline emissions year y , tCO ₂ e
DFT_y	=	Discount factor for testing in year y
EA_y	=	Quantity of SF ₆ reclaimed during the year y , tonnes SF ₆
$V_{SF6,hist}$	=	Historical annual baseline venting of SF ₆ , tonnes SF ₆
GWP_{SF6}	=	Global warming potential of SF ₆ , tCO ₂ e/tonnes SF ₆

Results:

Parameter	Unit	Value	Reference
DFT_y	-	0.94	Calculated
EA_y	t	18.36	Measured and calculated
$V_{SF6,hist}$	t	18.43	Calculated
GWP_{SF6}	-	23,900	default
BE_y	t	410,527	Calculated

Step1: Calculation of $V_{SF6,hist}$:

$$V_{SF6,hist} = w_{SF6,hist} \sum_t TI_{SF6,used,t}$$

Where:

$TI_{SF6,used,t}$	=	Used gas vented during eligible testing item t , tonnes gas
$w_{SF6,hist}$	=	Concentration of SF ₆ expected in used gas in the historical period, tonnes SF ₆ /tonnes gas

Results:

Parameter	Value	Unit	Reference
$TI_{SF6,used}$	6.95	t	The registered PDD
$\sum TI_{SF6,used}$	18.63	t	Calculated (refer to the ER Workbook)
$w_{SF6,hist}$	98.95%	-	Measured and calculated (refer to D.2 and ER workbook)
$V_{SF6,hist}$	18.43	t	Calculated (refer to the ER Workbook)

Step 2: Calculation of EA_y

$$EA_y = \sum_i CA_{i,y} * w_{SF6,i}$$

Where:

$CA_{i,y}$	=	Cylinder minimum for cylinder i in year y , tonnes gas
$w_{SF6,i}$	=	Concentration of SF ₆ in the cylinder i , tonnes SF ₆ /tonnes gas

$$CA_{i,y} = \min\{MR_{Gas,i,y}, MS_{Gas,i,y}, MI_{Gas,i,y}\}$$

Where:

- $MR_{Gas,i,y}$ = Mass of used gas recovered into cylinder i at the SF₆ recovery site in year y
 $MS_{Gas,i,y}$ = Mass of used gas stored in recovery cylinder i in year y , tonnes gas
 $MI_{Gas,i,y}$ = Mass of used gas from cylinder i which is injected for reclamation process in year y , tonnes gas

Results:

i	MR _{Gas} (kg)	MS _{Gas} (kg)	MI _{Gas} (kg)	w _{SF6,i}	CA _{i,y} (kg)	EA _i (tonne)
CDM-12002	1,098.00	1,096.00	1,110.80	98.71%	1096.00	1.08
CDM-12003	1,049.00	1,045.00	1,004.30	99.59%	1004.30	1.00
CDM-12004	1,111.00	1,108.00	1,085.20	99.73%	1085.20	1.08
CDM-12005	1,165.00	1,160.50	1,057.90	99.84%	1057.90	1.06
CDM-13001	1,162.20	1,170.00	1,153.30	99.58%	1153.30	1.15
CDM-13002	1,167.20	1,175.00	1,175.50	99.65%	1167.20	1.16
CDM-13003	547.10	551.50	552.10	99.16%	547.10	0.54
CDM-13004	1,108.00	1,114.00	1,056.80	99.73%	1056.80	1.05
CDM-13005	1,157.50	1,157.50	1,208.70	99.65%	1157.50	1.15
CDM-13006	1,185.70	1,196.00	1,185.70	99.17%	1185.70	1.18
CDM-13007	1,108.60	1,095.50	1,073.90	99.34%	1073.90	1.07
CDM-13008	967.10	982.00	875.20	99.47%	875.20	0.87
CDM-13009	861.90	871.00	817.00	99.36%	817.00	0.81
CDM-14001	1,041.00	1,053.50	983.10	98.58%	983.10	0.97
CDM-14002	999.80	1,009.00	944.00	98.90%	944.00	0.93
CDM-14003	1,098.80	1,111.00	941.00	99.76%	941.00	0.94
CDM-14004	1,058.20	1,065.00	982.00	99.26%	982.00	0.97
CDM-14005	1,045.70	1,055.00	971.00	98.22%	971.00	0.95
CDM-14006	396.79	400.00	386.00	99.24%	386.00	0.38
				Sum	3128.16	3.10

Note: please refer to D.2 and the Monitoring Workbook.

Step 3: Calculation of DFT_y

$$DFT_y = \frac{\sum_k (Q_{SF6,k,y} * RT_{k,y})}{Q_{SF6,y}}$$

Where:

$$Q_{SF6,k,y} = \sum_j Q_{SF6,k,j,y}$$

$$Q_{SF6,y} = \sum_k Q_{SF6,k,y}$$

Where:

Discount factor for testing in year y

Total amount of SF₆ filled in the testing of equipments in category k in year y , tonnes SF₆

Total amount of SF₆ filled in testing of all equipments in the project activity in year y , tonnes SF₆

Ratio of number of eligible testing items in category k (maximum value is set at 1)

Amount of SF₆ that is filled into equipment j of category k in year y at the SF₆ recovery site, tonnes

SF₆

Parameter	Value	Unit	Reference
$Q_{SF6,1,y}$	16.16	t	Measured
$RT_{1,y}$	0.93	-	Calculated
$Q_{SF6,2,y}$	6.12	t	Measured
$RT_{2,y}$	0.95	-	Calculated
DFT_y	0.94	-	Calculated

 $RT_{k,y}$:

$$RT_{k,y} = \frac{NT_{BL,k}}{NT_{PJ,k,y}}$$

Where:

- $RT_{k,y}$ = Ratio of number of eligible testing items in category k (maximum value is set at 1)
- $NT_{BL,k}$ = Average number of eligible testing items where venting occurred per equipment in the baseline, for category k
- $NT_{PJ,k,y}$ = Average number of total testing items where recovery was done per equipment in the project, for category k

Results:

Parameter	Value	Reference
$NT_{BL,1}$	2.76	The registered PDD
$NT_{BL,2}$	1.90	The registered PDD
$NT_{PJ,1,y}$	2.97	Calculated (refer to the Monitoring Workbook)
$NT_{PJ,2,y}$	2.00	Calculated (refer to the Monitoring Workbook)
$RT_{1,y}$	0.93	Calculated
$RT_{2,y}$	0.95	Calculated

 $NT_{PJ,k,y}$:

The average number of total testing items where recovery was done per equipment in the project in category k in the year y , ($NT_{PJ,k,y}$) are derived by using the testing records from the project year.

Category	Number of tested equipment	Number of testing items where recovery was done in year y	Average number per equipment in year y $NT_{PJ,k,y}$
Category 1 (12 KV~ 405 KV)	123	365	2.97
Category 2 (406 KV~ 800KV)	42	84	2.00

Note: "Number of tested equipment" and "Number of testing items where recovery was done in year y " were counted in sheet "KERI data" in the ER Workbook.

E.2. Calculation of project emissions or actual net GHG removals by sinks

>>

$$PE_y = PE_{RCL,y} + PE_{TF,y} + PE_{RF,y} + PE_{EXC,y}$$

Where:

- PE_y = Project emissions in year y , tCO₂e
- $PE_{RCL,y}$ = Project emissions from emission of SF₆ during reclamation in year y , tCO₂e
- $PE_{TF,y}$ = Project emissions as a result of increased electricity consumption at the testing facility attributable to project activity in year y , tCO₂e
- $PE_{RF,y}$ = Project emissions as a result of increased electricity consumption at the reclamation facility attributable to project activity in year y , tCO₂e
- $PE_{EXC,y}$ = Project emissions from exceptional event(s) at the SF₆ reclamation site in year y , tCO₂e

Results:

Parameter	Value (t)	Reference
$PE_{RCL,y}$	12,841.06	Calculated
$PE_{TF,y}$	619.45	Calculated
$PE_{RF,y}$	0.22	Calculated
$PE_{EXC,y}$	3,324.49	Calculated
PE_y	16,785	Calculated

 $PE_{RCL,y}$:

$$PE_{RCL,y} = GWP_{SF6} \cdot \sum_{j,i} (R_{SF6,y,j,i} - R_{SF6,hist,j}) \cdot P_{SF6,y,i}$$

Where

- $PE_{RCL,y}$ = Project emissions from the emission of SF₆ during reclamation in the year y, tCO₂e
 GWP_{SF6} = Global warming potential of SF₆, tCO₂e/t SF₆
 $R_{SF6,y,j,i}$ = Rate of SF₆ loss from point j during the reclamation period of cylinder i, in year y, %
 $R_{SF6,hist,j}$ = Historical rate of SF₆ loss from point j, %
 $P_{SF6,y,i}$ = Production of SF₆ during reclamation period of cylinder i in year y, t SF₆

Results:

Parameter		Value	Reference
GWP_{SF6}		23,900	default
$R_{SF6,hist,j}$		0.058%	The registered PDD
i	$R_{SF6,y,j,i}$	$P_{SF6,y,i} (kg)$	-
CDM-12002	0.079%	77,349	Measured
CDM-12003	0.208%	47,683	Measured
CDM-12004	0.159%	43,805	Measured
CDM-12005	0.093%	53,043	Measured
CDM-13001	0.234%	49,106	Measured
CDM-13002	0.228%	49,507	Measured
CDM-13003	0.358%	21,936	Measured
CDM-13004	0.110%	24,335	Measured
CDM-13005	0.017%	23,722	Measured
CDM-13006	0.004%	33,226	Measured
CDM-13007	0.013%	72,663	Measured
CDM-13008	0.099%	57,712	Measured
CDM-13009	0.142%	33,284	Measured
CDM-14001	0.120%	48,700	Measured
CDM-14002	0.124%	42,300	Measured
CDM-14003	0.121%	44,379	Measured
CDM-14004	0.030%	33,303	Measured
CDM-14005	0.027%	22,374	Measured
CDM-14006	0.000%	13,549	Measured
$PE_{RCL,y} (t)$		12,841.06	Calculated

$$R_{SF6,hist,j} = \frac{L_{SF6,hist,j}}{P_{SF6,hist}}$$

Where:

- $R_{SF6,hist,j}$ = Historical rate of SF₆ loss from point j, %
 $L_{SF6,hist,j}$ = Historical amount of SF₆ loss from point j, tonnes SF₆
 $P_{SF6,hist}$ = Production of SF₆ during the historical period, tonnes SF₆
 j = Sub-index used for SF₆ emission points

$R_{SF6,hist,j}$ was determined in the registered PDD as 0.058%.

$$R_{SF6,y,j} = \sum_i \frac{L_{SF6,y,j,i}}{P_{SF6,y,i}}$$

Where:

- $R_{SF6,y,j}$ = Rate of SF₆ loss from point j in year y , %
 $L_{SF6,y,j,i}$ = Amount of SF₆ loss from point j during the reclamation period of cylinder i in year y , tonnes SF₆
 $P_{SF6,y,i}$ = Production of SF₆ during the reclamation period of cylinder i , in year y , tonnes SF₆
 j = Sub-index used for SF₆ emission points

i	$R_{SF6,y,i}$	$P_{SF6,y,i}$ (kg)/measured	$L_{SF6,hist,i}$ /measured
CDM-12002	0.079%	77,349	61.15
CDM-12003	0.208%	47,683	99.23
CDM-12004	0.159%	43,805	69.82
CDM-12005	0.093%	53,043	49.26
CDM-13001	0.234%	49,106	114.69
CDM-13002	0.228%	49,507	112.86
CDM-13003	0.358%	21,936	78.45
CDM-13004	0.110%	24,335	26.68
CDM-13005	0.017%	23,722	3.98
CDM-13006	0.004%	33,226	1.19
CDM-13007	0.013%	72,663	9.71
CDM-13008	0.099%	57,712	56.95
CDM-13009	0.142%	33,284	47.36
CDM-14001	0.120%	48,700	58.58
CDM-14002	0.124%	42,300	52.38
CDM-14003	0.121%	44,379	53.74
CDM-14004	0.030%	33,303	10.12
CDM-14005	0.027%	22,374	5.99
CDM-14006	0.000%	13,549	0.00

$PE_{TF,y}$:

Rated capacity of the operating equipment: project operating equipment at the Testing Facility comprises two Compressors – 10kW; Suctioning Pump – 0.6 kW; Vacuum Pump – 1.5kW; and Evaporator – 4.8kW, 16.9 kW in total.

The “Tool to calculate baseline, project and/or leakage emissions from electricity consumption” is applied and $EC_{PJ,j,y}$ is approximated by the rated capacity of the operating equipment multiplied by operating hours of the facility, as permitted by AM0079 version 2.

$$PE_{TF,y} = \sum_j EC_{PJ,j,y} * EF_{EL,j,y} (1 + TDL_{j,y})$$

Parameter	Value	Reference
Rated capacity of all equipment (MW)	0.0169	nameplates and manufacturer's documents
Operating hours	23,496	Conservatively estimated = 8760h*979days/365days
$EF_{EL,i,y}$ (tCO ₂ e/MWh)	1.3	The registered PDD
$TDL_{i,y}$	20%	The registered PDD
$PE_{TF,y}$ (t)	619.45	Calculated
j	Testing facility	-

$PE_{RF,y}$:

Rated capacity of the operating equipment: project operating equipment added at the Reclamation Facility comprises one mass flow meter – 6 W.

Operating hours: Conservatively estimated as 8760 hr/yr.

$$PE_{RF,y} = \sum_j EC_{PJ,j,y} * EF_{EL,j,y} (1 + TDL_{j,y})$$

Parameter	Value	Reference
Rated capacity of all equipment (MW)	0.000006	MW
Operating hours	23,496	Conservatively estimated =8760h*979days/365days
$EF_{EL,i,y}$ (tCO ₂ e/MWh)	1.3	The registered PDD
$TDL_{i,y}$	20%	The registered PDD
$PE_{RF,y}(t)$	0.22	Calculated
j	Reclamation facility	-

$PE_{EXC,y}$

$EXC_{SF_6,y}$ is considered when an exceptional event occurred at the SF₆ reclamation site, for example an accident or emergency plant shutdown leading to the emission of SF₆ injected for reclamation.

The SF₆ quantity ($EXC_{SF_6,y}$) from any reclamation that coincides with the event is considered as project emissions ($PE_{EXC,y}$). If a recovery cylinder of used gas was being reclaimed when the event occurred, then the amount of gas extracted from the cylinder between 5 hours prior to the exceptional event and the time that the injection line was closed is considered as $EXC_{SF_6,y}$.

$$PE_{EXC,y} = GWP_{SF_6} \cdot EXC_{SF_6,y}$$

Where

- $PE_{EXC,y}$ = Project emissions from exceptional event(s) at the SF₆ reclamation site in year y , tCO₂e
- GWP_{SF_6} = Global warming potential of SF₆, t CO₂e/t SF₆
- $EXC_{SF_6,y}$ = Quantity of SF₆ which was being injected to the reclamation facility during exceptional events occurred in year y , tonnes SF₆

Parameter	Value	Reference
GWP_{SF_6}	23,900	default
$EXC_{SF_6,y}$ (kg)	139.10	Measured
$PE_{EXC,y}$ (t)	3,324.49	Calculated

E.3. Calculation of leakage

>>

According to the registered PDD, the leakage emissions associated with the Project are considered to be very marginal as to be negligible compared to the range of uncertainty of the GWP estimate, and they can be ignored during the crediting period.

Therefore, $LE_y = 0$.

E.4. Summary of calculation of emission reductions or net anthropogenic GHG removals by sinks

Item	Baseline emissions or baseline net GHG removals by sinks (t CO ₂ e)	Project emissions or actual net GHG removals by sinks (t CO ₂ e)	Leakage (t CO ₂ e)	Emission reductions or net anthropogenic GHG removals by sinks (t CO ₂ e)
Total	410,527	16,785	0	393,742

E.5. Comparison of actual emission reductions or net anthropogenic GHG removals by sinks with estimates in registered PDD

Item	Values estimated in ex-ante calculation of registered PDD	Actual values achieved during this monitoring period
Emission reductions or GHG removals by sinks (t CO ₂ e)	442,808	393,742

Note: The monitoring period covers 979 days, and the annual estimated CERs are 165,092 tCO₂e in the registered PDD, so the values estimated in ex-ante calculation of registered PDD are calculated as follows: $165,092 * 979 / 365 = 442,808$.

E.6. Remarks on difference from estimated value in registered PDD

>>

The actual values achieved during this monitoring period are 393,742 tons, 11% less than the values estimated in ex-ante calculation of registered PDD.

E.7. Actual emission reductions or net anthropogenic GHG removals by sinks during the first commitment period and the period from 1 January 2013 onwards

Item	Actual values achieved up to 31 December 2012	Actual values achieved from 1 January 2013 onwards
Emission reductions or GHG removals by sinks (t CO ₂ e)	67,861	325,881

Note: Considering the complexity of the emission reduction methodology, the following method is used to estimate the actual values achieved up to 31 December 2012.

Actual values achieved up to 31 December 2012 = $ER_y * EA_1$ (the recovery-reclamation cycle completed by 31 December 2012) / EA_i (Quantity of SF₆ reclaimed during the year y, tonnes SF₆) = $393,742 * 3.16 / 18.36 = 67,861$ t

Actual values achieved from 1 January 2013 onwards = $ER_y * EA_2$ (the recovery-reclamation cycle completed after 31 December 2012) / EA_i (Quantity of SF₆ reclaimed during the year y, tonnes SF₆) = $393,742 * 15.20 / 18.36 = 325,881$ t

Please refer to ER workbook for more detailed calculation.

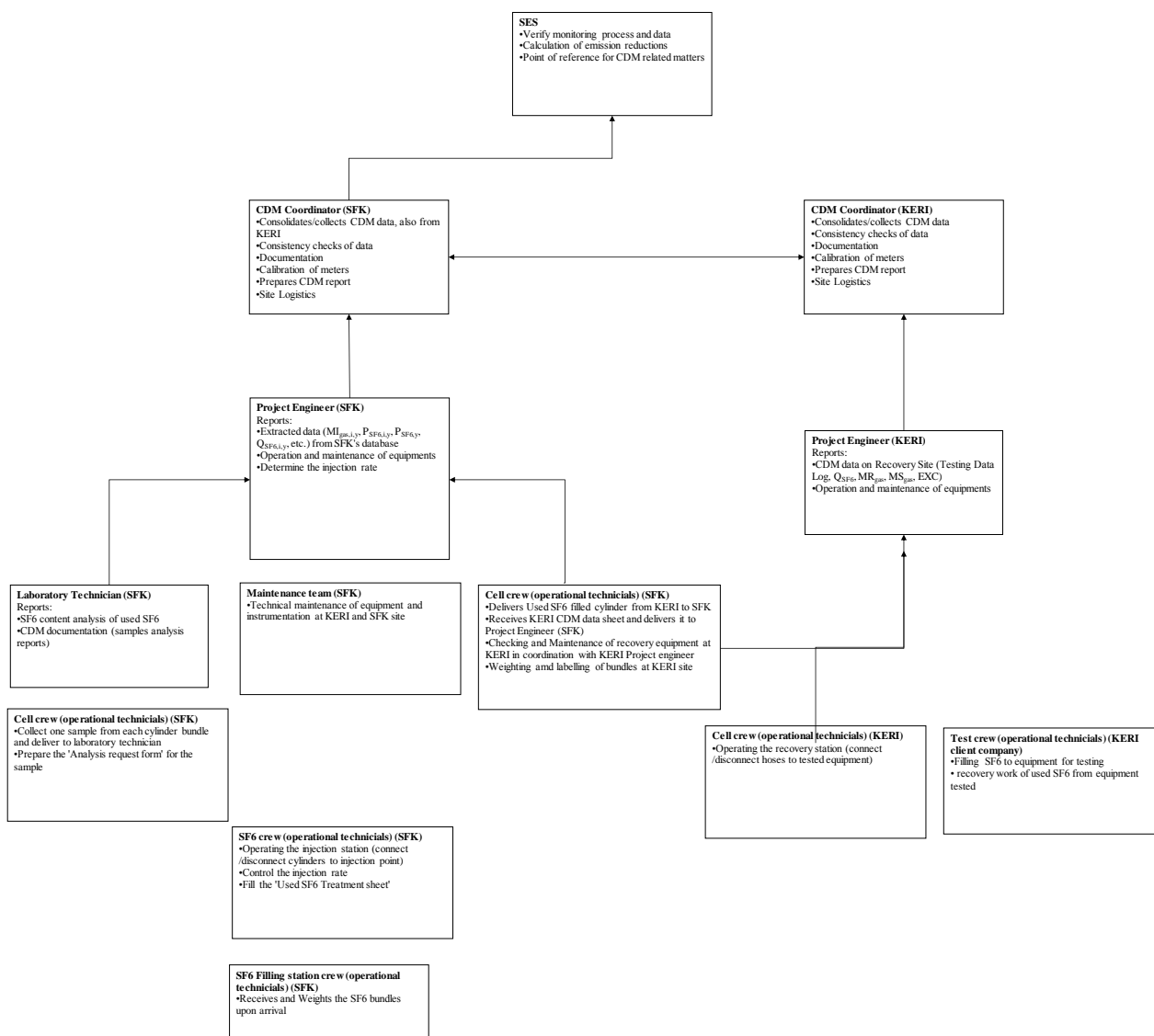
- - - - -

Appendix 1. Contact information of project participants and responsible persons/ entities

Project participant and/or responsible person/ entity	<input type="checkbox"/> Project participant <input checked="" type="checkbox"/> Responsible person/ entity for completing the CDM-MR-FORM
Organization name	Solvay Energy Services
Street/P.O. Box	No.74,
Building	FengYi, Ditan Park,
City	DongCheng District, Beijing
State/Region	Beijing
Postcode	100011
Country	China
Telephone	+86 (01) 6426 6008
Fax	+86 (01) 6426 7008
E-mail	river.zhang@solvay.com
Website	www.solvay.com
Contact person	Zhang Shoudou
Title	CO2 Operations Senior Project Manager, Asia
Salutation	Mr.
Last name	Zhang
Middle name	-
First name	ShouDou
Department	CO2 Operation
Mobile	86 186 0059 8494
Direct fax	+86 (01) 6426 7008
Direct tel.	+86 (01) 6426 6008 Ext. 602
Personal e-mail	river.zhang@solvay.com

Appendix 2. Organizational structure of CDM monitoring

Organizational structure of CDM Monitoring at the South Korea SF₆ Recovery and Reclamation Project



Document information

<i>Version</i>	<i>Date</i>	<i>Description</i>
04.0	25 June 2014	<p>Revisions to:</p> <ul style="list-style-type: none"> • Include the Attachment: Instructions for filling out the monitoring report form (these instructions supersede the "Guideline: Completing the monitoring report form" (Version 04.0)); • Include provisions related to standardized baselines; • Add contact information on a responsible person(s)/entity(ies) for completing the CDM-MR-FORM in A.6 and Appendix 1; • Change the reference number from <i>F-CDM-MR</i> to <i>CDM-MR-FORM</i>; • Editorial improvement.
03.2	5 November 2013	Editorial revision to correct table in page 1.
03.1	2 January 2013	Editorial revision to correct table in section E.5.
03.0	3 December 2012	Revision required to introduce a provision on reporting actual emission reductions or net anthropogenic GHG removals by sinks for the period up to 31 December 2012 and the period from 1 January 2013 onwards (EB70, Annex 11).
02.0	13 March 2012	Revision required to ensure consistency with the "Guidelines for completing the monitoring report form" (EB 66, Annex 20).
01	28 May 2010	EB 54, Annex 34. Initial adoption.
Decision Class: Regulatory Document Type: Form Business Function: Issuance Keywords: monitoring report		