



**Project design document form
(afforestation or reforestation)
(Version 11.0)**

Complete this form in accordance with the instructions attached at the end of this form.

BASIC INFORMATION

Title of the project activity	Uganda Nile Basin Reforestation Project No 1
Scale of the project activity	<input type="checkbox"/> Large-scale <input checked="" type="checkbox"/> Small-scale
Version number of the PDD	09
Completion date of the PDD	13/07/2020
Project participants	Uganda: National Forestry Authority (NFA) Italy: Government of Italy - Ministry for the Environment, Land and Sea, International Bank for Reconstruction and Development (IBRD) as Trustee of the BioCarbon Fund (BioCF) Luxembourg: Government of Luxembourg – Ministry of the Environment, Climate and Sustainable Development Spain: Kingdom of Spain –Ministry for the Ecological Transition & Ministry of Economy and Business France: Eco-Carbone S.A.S Japan: Japan Petroleum Exploration Co. Ltd; Sumitomo Chemical; Idemitsu Kosan Co., Ltd.; Japan Iron and Steel Federation (JISF); The Okinawa Electric Power Co., Inc.; Tokyo Electric Power Company Holdings, Inc.; Sumitomo Joint Electric Power Co., Ltd.; Suntory Holdings Limited
Host Party	Republic of Uganda
Applied methodologies and standardized baselines	AR-AMS0001 ver. 5 - Simplified baseline and monitoring methodologies for small-scale afforestation and reforestation project activities under the clean development mechanism implemented on grasslands or croplands
Estimated amount of annual average net anthropogenic GHG removals	4,364.8

only organization in Uganda able to provide confidence to international investors in this new investment concept and being able to provide the expected guarantees to replace the emission reductions in case the project activities may fail. The Co-investors are community groups, like the Rwoho Environmental Conservation and Protection Association (RECPA), with currently 250 members that are interested in tree planting. Many of the members already have a track record planting trees. Community groups will manage the remaining 14% of the project area. In subsequent project activities the investor share of communities and/or private enterprises will be gradually increased considering the learning curve and the available track record from the first project cluster.

Community groups will receive the payments for each tCO₂ sequestered at a price stipulated in the Emission Reductions Purchase Agreement between the buyer and the NFA. Detailed rights and responsibilities are regulated in Community Forest Management Agreements and a Tree Farming License (see attached documents). The NFA will provide seedlings and technical advice to community groups. In return they will be in charge to protect the plantations from fire and the remaining patches of natural forests.

NFA has all rights, titles and interest to the emission reductions produced by community groups. Community groups will be paid for the carbon sequestered by the NFA up-on delivery, but the NFA will maintain overall responsibility for the project implementation and delivery of the emission reductions.

A.2. Project boundary

The project area is located in Mbarara, (Rwampara county) Isingiro, (Isingiro county) and Ntungamo (Ruhama county) districts and is covered by Uganda Department of Lands and Surveys map sheet 86/3 series Y732 at 1:50,000. The closest town is Mbarara (70km away from the planting site).

Tab. A-1 Project area.

Small-scale CDM A/R project No. 1	Area in ha
NFA planting area	402.4
Community planting area	65.6
Total	468

The project area is part of the Rwoho Central Forest Reserve, a gazetted woodland reserve. In total the reserve covers an area of 9,100 ha, of which 50 % is available for reforestation activities. Of the 50 km of external boundary about 9 km follows streams while 41 km is an artificial boundary maintained as a planted cutline with earth corner cairns and boundary-directional trenches. The reserve lies on top of a large flat-topped ridge running from North to South. The coordinates of the small-scale project are presented in the table and map below.

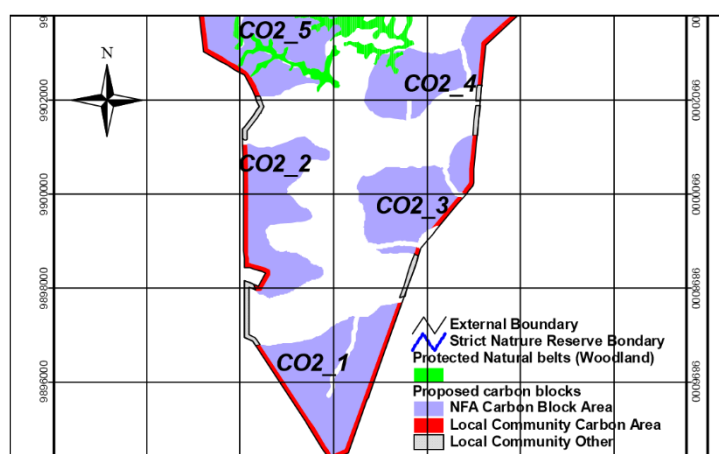


Fig.-2: Location of the small-scale CDM A/R projects

Tab A-2 Coordinates of the project boundaries

Small-scale CDM AR project No	Easting	Northing
1	228,404.10	9,894,007.47
	231,557.99	9,897,407.49

Projection:

UTM Zone 36 S (central Meridian E 33)
 Oatun (Spheroid) = WGS84 (or ARC 1960)
 Scale: 0.9996
 False Easting = 500,000
 False Northing= 0

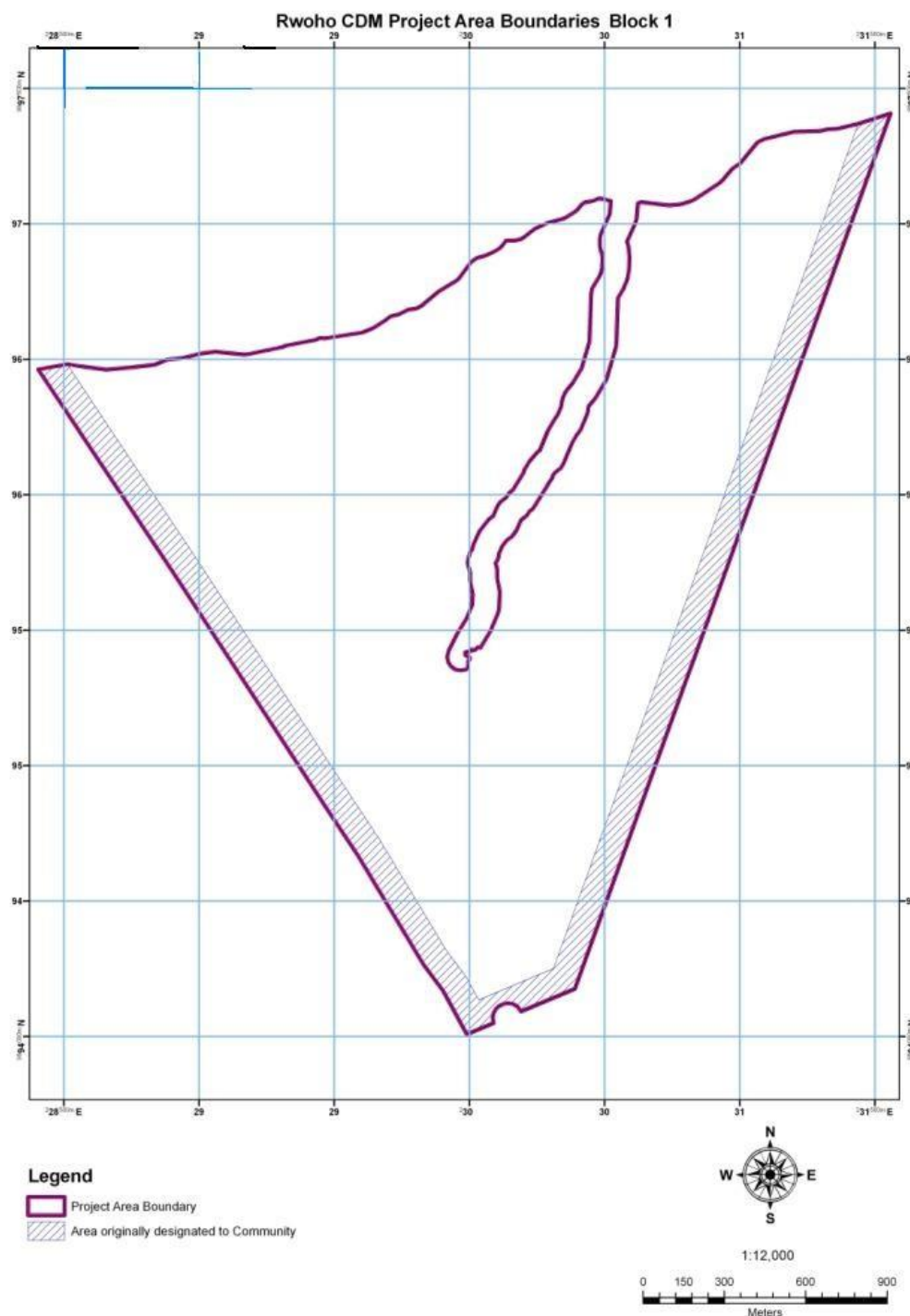


Fig.-3 Localization of the Project Boundary of Project 1

A.3. Legal title to land

The project area is located within the Rwoho Central Forest Reserve (CFR). Under Article 237 (2) (b) of the Constitution of the Republic of Uganda, CFRs are regarded as trust property on behalf of the Uganda Land Commission. The NFA is a statutory manager for CFRs of which Rwoho is amongst as laid down under the National Forestry and Tree Planting Act No. 8/2003. The land tenure is with the Government of Uganda, administered through the Uganda Land Commission. The Constitution of the Republic of Uganda 1995, Forest Reserves (Declaration) Order 1998, Land Act Cap 227 laws of Uganda as revised 2000 evidences the land title, i.e. that Forest Reserves are vested in the Uganda Land Commission.

The NFA can issue tree planting licenses to third parties, such licenses currently do not stipulate who is entitled to benefit from the carbon credits because the Ministry of Water and Environment is still in the process to develop a respective regulation. However, the current understanding of the Ministry is that the person/institution utilizing the land, i.e. the land user owns the carbon credits in Uganda. The Climate Change Secretariat will charge a small fee for their service to approve CDM projects and to monitor that the sustainable development benefits materialize as outlined in the Project Design Document. The only legal land-use in the CFR is forestry but due to fire and a lack of resources most of the area was not used for forestry for more than 40 years. Grasslands are the main land cover (see also section A.5).

There are people living in villages located outside the boundary of the CFR. They have used small-areas inside the Reserve for subsistence agriculture and occasionally for grazing. These communities will be entitled and supported to grow trees within the project boundary and to earn carbon credits in the framework of the project activities if they join RECPA or form a community association.

A.4. Eligibility of land

In Uganda the Climate Change Secretariat (DNA) has defined forests as land which has a:

- Minimum area of 1 hectare
- Minimum tree crown cover of 30 %
- Considering trees that potentially reach a height of > 5 m.

Based on satellite images (see table below) the area that was non-forested since 31/12/1989 and hence being eligible for the proposed A/R CDM project activity has been delineated.

Tab A-3. Available satellite images to demonstrate that the project site was non-forested since 31.12.1989.

Year	Sensor	Forest classification
1984	Landsat	Non forest
1992	SPOT XS	Non forest
2004	Landsat	Non forest

Areas currently forested or which have been forest after the 31.12.1989 are excluded from the A/R CDM project activity. In the following documents there is further evidence that the area was grassland even before 1964:

- Working Plan for Bugamba and Rwoho CFRs. Ankole Kingdom. Period 1964 to 1973 prepared by J. Lang-Brown and published by the Uganda Forest Department
- Working Plan for Bugamba and Rwoho Central Forest Reserves; July 1985 to June 1990 prepared by R.A. Owen, H.L. Blackett, P. Drichi, D. Elungat and J. Mbony-Bahane and published by the forest Department in 1985" there is already a written testimony that the area was grassland.

Subsequently, 5 small-scale CDM A/R projects have been distributed across the eligible land area considering that the project boundaries of any two small-scale CDM A/R project activities will be more than 1 km apart from each other. The project area of the project activity is presented in the table below. The project will include a certain proportion for community project activities. The map in

below is showing the respective areas.

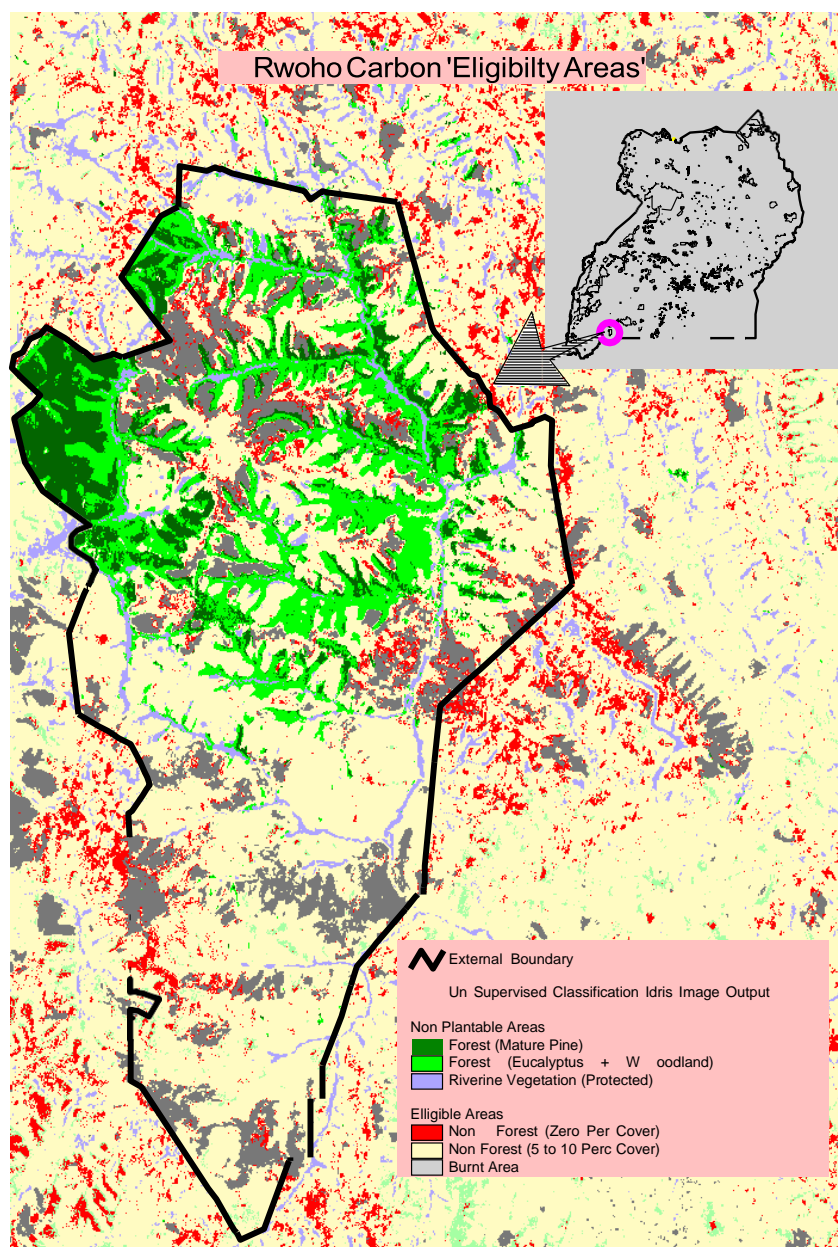


Fig.-4 Rwoho CDM land eligibility map based on SPOT XS images from 08/1992

Interviews with local communities conducted during the project validation confirm continuous degradation of land.

A.5. Environmental conditions

The area is characterized by a number of ridges dropping towards Kabobo valley in the west and descending to the Mishumba valley by a series of parallel ridges running out eastwards. It has an altitudinal range of 1,360-1,800 m with 56 % of the area exceeding a 15% slope (51 km²). The annual average rainfall is about 1,000 mm occurring mainly in two rainy seasons (March-May and September- December). Together with a relatively low mean annual temperature of 17.5°C this results in favorable tree growth conditions. Frosts were not recorded in the last 20 years and the area is not subject to flooding apart from small areas in the valley bottoms which will not be planted. The main watershed is the Kagera River which flows into Lake Victoria. The soil in most areas is sandy loam.

Grassland is the human induced fire-climax vegetation in the area. The grassland area is dominated by Themeda-Chloris savanna grass. The riverine vegetation, which will be protected in the framework of the project activities, includes Papyrus grass and semi-deciduous forests (Albizia-Markhamia).

Rwoho Central Forest Reserve is categorized as a secondary conservation forest in the National Forestry Nature Conservation Master Plan. There are no red-list species in the area. Of the 65 forests investigated in Uganda, Rwoho ranks 41st in overall biodiversity importance. Rwoho has one tree species unique to Uganda (*Terminalia laxiflora*) and one tree species endemic to the Albertine Rift (*Grewia pubescens*). Furthermore, there are a number of restricted range species that only occur in less than 5 forests in Uganda, but also in other forests in the East African region. In the area also two mammals and one butterfly which are regional endemics, and 5 trees/shrubs, one small mammal and 8 butterflies of restricted range were found. In the table below the main results of the conservation value assessment are presented.

Tab. A-4 Summary of the inventory conducted in Rwoho CFR for the Uganda Forestry Nature Conservation Master Plan (2002).

CRITERION	TREE & SHRUBS	BIRDS	MAMMALS	BUTTERFLIES	OVERALL
Total No. of species	92	63	13	103	
No. of restricted range species (< 5 forests)	5	0	1	8	
Species unique to forest	<i>Terminalia laxiflora</i>	None	None	<i>Colotis pallene</i> , <i>Henotesia ubenica</i> , <i>Spialia diomus</i>	4
Uganda endemics	None	None	<i>Crocidura selina</i>	<i>Euphaedra peculiaris</i>	2
Albertine Rift	<i>Grewia pubescens</i>	None	None	None	1

A.6. Measures

Within the project 468ha of timber plantations would be established. Pine and mixed native tree species plantations will be established in a block design in degraded grassland areas. It was anticipated that the plantation area would be stocked with 75% *Pinus caribaea* and *Pinus oocarpa* already introduced and tested species in the area, 20% *Maesopsis eminii* and 5 % *Prunus africana*. However, after an analysis of the project site growth conditions was conducted the latter two species were dropped from the afforestation plan in favour of *Pinus caribaea* and *Pinus oocarpa*.

Pinus will be managed on a 22 years rotation cycle (timber production) or until the target diameter is reached, i.e. 45 cm. The plantation will be established in 19 blocks of an average of 25 ha each. Depending on the terrain and the road system block size will be between 20 and 30 ha. Around each block a fire line will be maintained.

The project area will be planted from 2009 to 2021.

As indicated above, for the reforestation activities the following tree species will be used:

- 100 % *Pinus caribaea* var. *hondurensis* and *Pinus oocarpa*
- 0% *Maesopsis eminii*
- 0 % *Prunus africana*

Pinus caribaea and *Pinus oocarpa* are widely tested in Uganda and adaptable to a number of site conditions. *P. caribaea* and *P. oocarpa* were introduced to Uganda around 1960. Experiences with native tree species are limited in East Africa but the natural occurrence of *Maesopsis eminii* and *Prunus africana* in Rwoho is indicating that the prevailing site conditions are favorable for these tree

species. However, due to limited information on tree growth performance and pest problems, in particular with *Prunus africana*, further increasing the proportion of native tree species would increase the project risk

Forest management techniques

Nursery technology, planting, tending and harvesting regimes will be in line with recently developed standards (see SPGS guidelines available at the NFA).

Site species matching and seed sources

All tree species used in the reforestation activities are proven in the area and not known to be invasive. Only high quality seed will be used. The potential negative impact of Pine plantations on the forest soil condition will be mitigated by modern silvicultural systems focusing on single tree performance, i.e. early thinning will focus the stand increment on the best performing trees and will result in a vigorous undergrowth vegetation to prevent soil erosion. The thinning regime applied is considered in the GHG sequestration calculation.

Pinus caribaea seed will be purchased from seed orchards in Queensland, Australia, Brazil or S. Africa while *Pinus oocarpa* will be purchased from orchards in Brazil. The orchards have been established as part of a scientific selection and breeding program. Seeds were originally from native stands in the Caribbean and/or Central American region and have undergone 2 or 3 generations of testing. Seed orchards in Kwa-Zulu Natal, South Africa have a similar history. In all cases, the number of mother trees will be large (>30) to ensure genetic variability.

Prunus africana seed will be collected from superior trees from Uganda's natural forests or wildlings. *Maesopsis eminii* seed will be also collected from plus trees planted in lines and blocks to enrich the forests in the 1960's and '70's. Efforts will always be made to maximize the number of mother trees per location (> 20).

Site preparation

Site preparation to enhance the early growth and development of the planted seedlings will be used, i.e. area around the planting spots will be weed free before planting. Site preparation will consider access for forest management and eventual forest harvesting activities. The existing road system will be only extended if necessary and low impact road construction techniques will be applied. Considering the low soil-carbon levels on this degraded land, site preparation will not significantly reduce soil carbon. Scattered mature trees on the project site will not be felled and staff and contractors will be trained accordingly as outlined in the forest management plan.

Planting

Most appropriate planting techniques for the local conditions will be adopted. The objective is to use the most cost-effective methods to achieve the objectives of high stocking and fast early growth. Planting distances will be such as to maximize stand development for timber production: the norm is 3.0 m x 3.0 m (1,111 plants per hectare), though this will be adopted according to specific site conditions. Accurate alignment of planting lines and spacing within the lines is important for subsequent tending operations.

Planting holes shall be dug in advance of the rains so that the pits absorb moisture before planting. The limited soil disturbance will not significantly change the already low soil carbon levels. When moisture build-up is sufficient all the planting shall be done as quickly as possible. If possible, the plants shall be taken out to the planting site and kept watered and in the shade there. Within 2-3 weeks of planting, a stock checking shall be done to determine whether it is necessary to replace the failures ('beating up'). Where survival is less than 90%, beating up will be carried out - preferably within the same season. In case that pests or fire will disturb the project activities trees will be replanted and the reduced carbon sequestration rates will be considered and accounted for. The carbon sequestration rates were already risk reduced by 25 % to consider respective risks.

Tending and Weed Control

Tending and weed control are aimed at achieving the most cost-effective methods of establishing

well adapted and high yielding tree plantations. Because long-term sustainability is crucial, techniques will be employed to improve both the ecological stability and the environmental protective functions of the project area.

Fire management

For the plantation a fire management plan will be developed and fire control will be a crucial element of the collaborative forest management agreement. An incentive system will be developed together with the communities to control fires within the plantation and conservation area and at a buffer zone surrounding the forest reserve. A sufficient budget to collect information on fire risks (monitoring of environmental parameter), to raise awareness and to provide fire control and firefighting equipment is considered in the financial plan.

Pest control and disease management

The project area will be routinely assessed for any pest and disease problems that may arise. Since pests and diseases usually occur in stressed crops, a key aim will be to minimize the stress in the planted areas through a variety of techniques that can be classed as 'good silviculture'. Every effort shall be carefully made to match species with prevailing site conditions and adopt cultural practices to ensure vigorous tree growth capable of resisting the pressures of pest and diseases. Chemical control methods will only be used as a last resort and after careful consideration of the environmental impact.

Thinning and pruning

Thinning and pruning of the plantations will be important to ensure that they maximize the proportion of large stems with clear timber. Thinning aims: i) to focus the stand increment on the best performing individuals and ii) to reach the targeted final product diameter as soon as possible. The impact of thinning on carbon sequestration is considered. The objects of pruning are to produce clear timber, to upgrade timber just outside the knotty core and in some cases, to prevent the spread of ground fires into the crowns. The impact of pruning on carbon sequestration rate is considered in the reduced biomass expansion factor (1.3 for Pine and 1.4 for all other tree species). Thinning and pruning regimes depend on the growth rates achieved in the project area. It is expected that three thinnings will take place - to be carried out at intervals dictated by the growth rate of the crops (approximately at an age of 5-6, 7-10 and 10-14 years). Similarly, pruning will be carried out in about 3 intervals depending on the growth of the trees.

Training

NFA staff and contractors will be trained to implement the forest management plan and the activities mentioned in this PDD (e.g. carbon monitoring). Details on the training program are outlined in the forest management plan and in the annual NFA plan of operation.

Technology transfer follows the training program of NFA according to SPGS guidelines which is supported by the EU and Norway.

A.7. Approach to addressing non-permanence

tCERs will be used for the net anthropogenic GHG removals by sinks. The project is designed that harvesting and subsequent replanting occurs at different times for smoothing the carbon stock changes curves. Some sequestered carbon may be released due to catastrophic events. In this case an equivalent quantity of tCERs will be replaced based on modalities and procedures of CDM A/R project activities.

A.8. Parties and project participants

Parties involved	Project participants	Indicate if the Party involved wishes to be considered as project participant (Yes/No)
Uganda (host Party)	National Forestry Authority (NFA)	No
Italy	Government of Italy - Ministry for the Environment, Land and Sea International Bank for Reconstruction and Development (IBRD) as Trustee of the BioCarbon Fund (BioCF)	Yes
Luxembourg	Government of Luxembourg – Ministry of the Environment, Climate and Sustainable Development	Yes
Spain	Kingdom of Spain-Ministry for the Ecological Transition & Ministry of Economy and Business	Yes
France	Eco-Carbone S.A.S	No
Japan	Japan Petroleum Exploration Co. Ltd; Sumitomo Chemical; Idemitsu Kosan Co., Ltd.; Japan Iron and Steel Federation (JISF); The Okinawa Electric Power Co., Inc.; Tokyo Electric Power Company Holdings, Inc.; Sumitomo Joint Electric Power Co., Ltd.; Suntory Holdings Limited	No

Rwoho Environmental Conservation and Protection Association (RECPA) and other community groups are participating the Project in conjunction with low-income communities and individuals as determined by the host Party in compliance with the requirements for Decision 6/CMP.1 Annex section 15 (b).

A.9. Public funding of project activity

The NFA will use revenues from licensing to finance the 5 small-scale A/R CDM projects. Therefore, the projects do not result in a diversion of official development assistance and is separate from and is not counted towards the financial obligations of those Parties.

The NFA is in charge of all Central Forest Reserves on behalf of the Government of Uganda as defined by the Uganda Forestry and Tree Planting Act. Its financial viability is fundamental to meet the obligations of sustainable management and conservation of the Reserves. According to the initial plan the NFA should be financially self-sustaining by the fourth year of operations. Current financial projections find this realistic with regards to funding the core operations, but there will be need for external funding to continue investing in new plantations after the support is phasing out, and until the new timber plantations provide revenue.

For the NFA 2004-05 was the first year of operations and the institution received activity-specific funding from two donor arrangements:

1. Under the Forest Resource Management and Conservation Project from the EC/European Development Fund the NFA receives €2.6 million, ending 2006. 2006 is the last year of the programme, with an estimated funding of €1.6 million.
2. UK Department for International Development and Norway provided € 3.3 million as a Start-Up Fund to co-fund infrastructure development and to provide working capital for the establishment phase of the NFA. The programme ends 2007, and € 2.5 million remains for 2006 and 2007.

A.10. History of project activity

The project is registered as an A/R CDM project with reference number 4939.

A.11. Debundling

The NFA has decided to develop a portfolio of small-scale CDM A/R project activities together with private and community-based investors. Considering the land-use patterns in Uganda and the available investment capital, small scale A/R CDM project activities clustered in a number of Central Forest Reserves and regions appear to be the only feasible option for Ugandan based investors, particularly when aiming at including communities and small-scale private entrepreneurs. In each small-scale CDM A/R project activity the COP10 decision regarding bundling will be considered, i.e. each project activity will not produce more than 16,000t CO₂e per year considering the average projected net anthropogenic GHG removals by sinks. The project boundaries of any two small-scale CDM A/R project activities will be more than 1 km apart from each other.

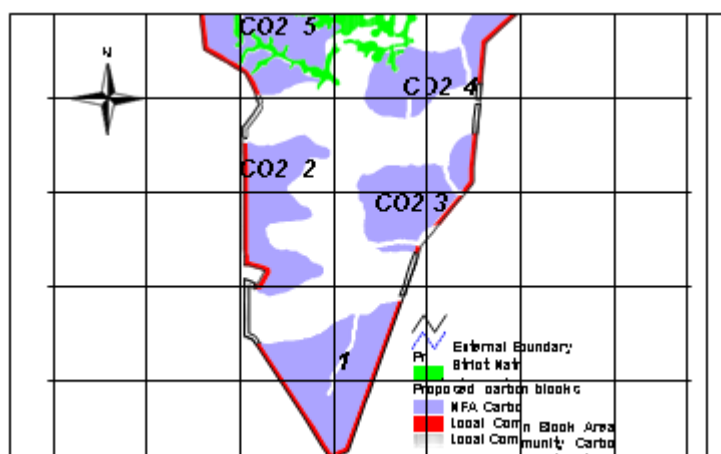


Fig.-5 Location of the SCCAR Projects

Tab. A-5 Closest points of adjacent projects 2 and 3 to project 1 demonstrating a minimum of 1 km between projects.

Project A to Project B	Project A Point		Project B Point		DeltaY	DeltaX	Distance (Metres)	Bearing
A Closest Point to B	East	North	East	North				
C02_1 to C02_2	228,882.52	9,896,490.98	228,717.30	9,897,484.90	993.92	165.22	1,007.5	350.6
C02_1 to C02_3	231,557.80	9,897,407.30	231,437.40	9,898,436.40	1,029.10	120.40	1,036.1	353.3

SECTION B. Application of methodologies and standardized baselines

B.1. References to methodologies and standardized baselines

Simplified baseline and monitoring methodologies for small-scale afforestation and reforestation project activities under the Clean Development Mechanism implemented on grasslands or croplands **AR-AMS0001/Version 05**.

B.2. Applicability of methodologies and standardized baselines

The choice of methodology is justified because:

1. The proposed project activity is "grasslands to forested lands"; as shown in LANOSAT, ground truthing during site selection and baseline;
2. There has been no ploughing of lands during plantation establishment; as NFA uses 25 cm pits for planting;
3. The displacement of activities due to the implementation of the project activity is less than 50%; as shown in section B.6.3 of this document under Leakage attributable to the project activity and;
4. Significant changes in the carbon stocks, in particular the living biomass pool of woody perennials and the below-ground biomass of grasslands, are not expected to occur in the absence of the project activity as current land use would be continuing according to observations made during site selection.

B.3. Carbon pools, sources and greenhouse gases (GHGs)

As per the simplified baseline and monitoring methodologies for selected small-scale afforestation and reforestation project activities under the CDM, (i) CO₂ is the only GHG included, and (ii) above- and below-ground tree and woody perennials biomass and below ground biomass of grasslands are selected, for the proposed small-scale A/R CDM project activity.

Carbon pools		Selected?	Justification/Explanation
Baseline	Above ground, tree and woody perennials	No	It has been demonstrated to be negligible as indicated in sections B4 and B6.3.
	Below ground, tree, woody and grass	No	It has been demonstrated to be negligible as indicated in sections B4 and B6.3.
	Dead wood	No	According to the applicable methodology, this carbon pool has been excluded.
	Litter	No	According to the applicable methodology, this carbon pool has been excluded (conservative measure)
	Soil organic carbon	No	According to the applicable methodology, this carbon pool has been excluded (conservative measure)
Project activity	Above ground, tree and woody perennials	Yes	Main carbon pool increased through project activity.
	Below ground, tree, woody and grass	Yes	Carbon pool increased through project activity.
	Dead wood	No	According to the applicable methodology, this carbon pool has been excluded (conservative measure)
	Litter	No	According to the applicable methodology, this carbon pool has been excluded (conservative measure)

Carbon pools		Selected?	Justification/Explanation
	Soil organic carbon	No	According to the applicable methodology, this carbon pool has been excluded (conservative measure)

Source		GHG	Included?	Justification/Explanation
Baseline	Changes in carbon stocks	CO ₂	No	It has been demonstrated to be negligible as indicated in sections B4 and B6.3.
		CH ₄	No	Not applicable.
		N ₂ O	No	Not applicable.
	Biomass burning	CO ₂	No	Not applicable.
		CH ₄	No	Excluded as per applicable methodology (conservative).
		N ₂ O	No	Excluded as per applicable methodology (conservative).
Project activity	Changes in carbon stocks	CO ₂	Yes	Main source increased through project activity.
		CH ₄	No	Not applicable.
		N ₂ O	No	Not applicable.
	Biomass burning	CO ₂	No	Not applicable.
		CH ₄	No	Excluded as per applicable methodology (conservative).
		N ₂ O	No	Excluded as per applicable methodology (conservative).

B.4. Establishment and description of baseline scenario

The baseline scenario of the proposed small-scale CDM A/R project activity is established using the simplified baseline and monitoring methodologies for selected small-scale A/R CDM project categories. The carbon stock changes in the baseline scenario are set to zero for lands without growing trees and the projected carbon stock changes in above- and below-ground biomass of existing trees for lands with growing trees). Therefore, the carbon stock change in the baseline scenario does not need to be monitored.

B.5. Demonstration of additionality

The demonstration of additionality follows the AR-AMS0001/ Version 05. The project activity would not have occurred without the CDM component due to the following barriers:

Investment barriers, other than the economic/financial barriers, inter alia:

The NFA and community groups do not have access to the EU Sawlog Production Grant Scheme, because they are not eligible, and the fund is used-up already. In addition, government agencies are not eligible to apply for this grant and community members interested in tree planting do not reach the minimum planting area to be eligible, i.e. 25 ha. There is currently no other fund to support tree planting at this scale. Other debt funding is currently not available and international capital markets are reluctant to support forestry projects in Uganda, e.g. the dfcu Group Managing Director in Uganda mentioned that projects without a positive cash-flow after 3-4 years will not be considered for a loan. In addition, guarantees/securities of forestry projects are difficult to sell due to limited market and tradability experiences with this asset class. Finally, the high-country specific risk enables the project developer to get financing (OECD country risk classification valid as of 27/01/2006).

Institutional barriers, inter alia:

Legally the project area can be used only for forestry, no alternative land-use is permitted. However,

the financial situation of the NFA prevents that Central Forest Reserve are reforested, considering the financial situation of the NFA and the scale of this task. Approximately 500,000 ha of Central Forest Reserves do not have an actual forest cover. The NFA has only the capacity to reforest recently harvested plantations. This is more cost efficient because land preparation costs are lower and the revenue from the timber sales can be used to cover the investment costs. Therefore, without the CDM component the project activity would have not occurred.

Technological barriers, inter alia:

There is limited tree planting know-how in the area after the forestry operations collapsed in the 1970s. From nursery operations to silvicultural expertise - the knowledge had to be renewed through collaboration with the ENCOFOR project of the EU.

Barriers due to prevailing practice, inter alia:

The small-scale CDM AR project activity is the "first of its kind". No project activity of this type is currently operational in East Africa. This means the initial learning curve is steep and transaction costs to get the project on the ground will be very high. This pilot project activity will leverage the playing field for other investors to establish CDM forestry projects.

Barriers due to local ecological conditions, inter alia:

The area is a human induced fire climax with more or less annual fires outside the natural forest conservation areas in the moist valleys. Natural regeneration is not possible under these conditions and without the CDM component the project activity would not be feasible, and the soil degradation would continue and the conservation areas with natural vegetation would most likely disappear.

Barriers due to social conditions, inter alia:

There are hardly any income generation opportunities in the area after the forestry operations collapsed in the 1970s. The communities are relatively far away from the main markets in Mbarara and Ntungamo and therefore cannot sell agricultural crops at competitive prices. Accordingly, only with the CDM component forestry skills can be developed and people can find skilled and unskilled employment. RECPA is the main community based environmental association in the area. They are committed to plant quality trees but without the carbon component they have no access to land, quality seedlings and technical advice.

B.6. Estimation of net anthropogenic removals

B.6.1. Explanation of methodological choices

The historical baseline approach is used for the proposed small-scale A/R CDM project activity. In the absence of the reforestation project no significant positive changes in the carbon stocks within the project boundary would occur considering that reforestation is facing the barriers outlined below.

Data used to determine the baseline scenario:

- Satellite imagery
- Biomass survey with cluster plot design, measured parameters were: number of trees, respective species, dbh and tree height.

Given this information, we have assumed that

Significant changes in the carbon stocks, in particular the living biomass pool of woody perennials and the below-ground biomass of grasslands, are not expected to occur in the absence of the project activity.

As such following the paragraph 6 (a) of the **AR-AMS0001 / Version 05** methodology:

Changes in carbon stocks shall be assumed to be zero.

B.6.2. Data and parameters fixed ex ante

Data/Parameter	Basic wood density
Data unit	Tonnes of dry matter per m3 fresh volume
Description	Wood density measured in tonnes of dry matter per m3 fresh volume
Source of data	Table 4.13 basic wood density (d) of tropical tree species (oven-dry tonnes / moist m ³)", 2006 IPCC Guidelines for National GHG Inventories
Value(s) applied	0.51 for Pinus caribaea and 0.55 for Pinus oocarpa
Choice of data or measurement methods and procedures	IPCC default value as national default values are not available
Purpose of data	Calculation of Actual net GHG removals
Additional comment	None

B.6.3. Ex ante calculation of net anthropogenic removals

The net anthropogenic GHG removals by sinks for each year during the first crediting period are calculated as,

$$ER_{AR\ CDM, t} = \Delta C_{PROJ, t} - \Delta C_{BSL, t} - GHG_{PROJ, t} - L_t \quad (21)$$

where:

$ER_{AR\ CDM, t}$	Net anthropogenic GHG removals by sinks (t CO ₂ -e/year)
$\Delta C_{PROJ, t}$	Project GHG removals by sinks at time t (t CO ₂ -e/year)
$\Delta C_{BSL, t}$	Baseline net GHG removals by sinks (t CO ₂ -e/year)
$GHG_{PROJ, t}$	Project emissions (t CO ₂ -e/year)
L_t	Leakage attributable to the project activity at time t (t CO ₂ -e / year)

Baseline net GHG removals

The baseline scenario of the proposed small-scale CDM A/R project activity is established using the simplified baseline and monitoring methodologies for selected small-scale CDM A/R project categories. The carbon stock changes in the baseline scenario are set to zero for lands without growing trees and the projected carbon stock changes in above- and below-ground biomass of existing trees for lands with growing trees. Therefore, the carbon stock in the baseline scenario does not need to be monitored.

Baseline carbon stocks are determined using equation 1:

$$B_{(t)} = \sum_{i=1}^I \left(A_{A(t)i} + B_{B(t)i} \right) * A_i \quad (1)$$

Where:

$B_{(t)}$ = carbon stocks in the living biomass pools within the project boundary at time t in the absence of the project activity (t C);

$B_{A(t)i}$ = carbon stocks in above-ground biomass at time t in the absence of the project activity (t C/ha)

$B_{B(t)i}$ = carbon stocks in below-ground biomass at time t in the absence of the project activity (t C/ha)

A_i = project activity area of stratum i (ha)

i = stratum i (I = total number of strata)

Above-ground biomass

For above-ground biomass $B_{A(t)}$ is determined for the one stratum as follows:

Living biomass carbon pools are expected to be constant

$$B_{A(t)} = M_{(t)} * 0.5 \quad (2)$$

Where:

$B_{A(t)}$ = carbon stocks in above-ground biomass at time t in the absence of the project activity (t C/ha)

$M_{(t)}$ = above-ground biomass at time t that would have occurred in the absence of the project activity (t dm/ha)¹

0.5 = carbon fraction of dry matter (t C/t dm)

According to the methodology $M(t)$ consists of above-ground tree and woody perennials biomass M_{woody} . It has been measured during preliminary baseline surveys. The results of these surveys are shown in Table B.1. The survey methodology was identical to the monitoring methodology described below with the exception that the plot radii were 20 m due to the sparseness of the trees.

Below-ground biomass

For below ground-biomass $B_{B(t)}$ is determined for the one stratum as follows:

Living biomass carbon pools are expected to be constant

$$B_{B(t=0)} = B_{B(t)} = 0.5 * (M_{grass} * R_{grass} + M_{woody(t=0)} * R_{woody}) \quad (6)$$

Where:

$B_{B(t)}$ = carbon stocks in below-ground biomass at time t that would have occurred in the absence of the project activity (t dm/ha)

M_{grass} = above-ground biomass in grass on grassland at time t that would have occurred in the absence of the project activity (t dm/ha)

$M_{woody(t)}$ = above-ground woody biomass at time t that would have occurred in the absence of the project activity (t dm/ha)

R_{woody} = root to shoot ratio of woody perennials (t dm/t dm)

R_{grass} = root to shoot ratio for grassland (t dm/t dm)

Documented local values for R_{grass} and R_{woody} are not available in Uganda. Due to the absence of such values we used:

R_{grass} 1.6 (IPCC GPG Table 3.4.3 value for tropical grasslands)

R_{woody} 0.42 (Table 3A.1.8 from the GPG LULUCF we will use the root-shoot ratio for "secondary tropical/subtropical forests").

The estimated baseline GHG removals by sink are the sum of the carbon stock change in above and below ground biomass. As described in section B2 stock changes in the baseline scenario are set to zero due to ongoing land degradation. Therefore, formula (10) is not applicable.

Data was collected with a sampling intensity of 1%, the allocation of the sampling plots is presented in Figure-5. The first point was randomly selected and subsequently between 2-3 cluster points where located in the main directions, with a distance of 300m.

The baseline revealed an average current above and below ground biomass of 3.05 tCO₂ per ha which was considered in the carbon sequestration calculation in section B.6.4. In the table below the biomass distribution across the sampling plots is presented. A comparison with sample plots measured for the National Biomass Study in 2000 and 2004 indicate that the biomass stocks are relatively stable but with a tendency to decrease. The National Biomass Study was carried out to assess the existing biomass in Uganda. Plots have been measured at national scale at grid intervals

¹ dm = dry matter

of 5 km by 10 km.

Tab. B-1 Biomass distribution of the small-scale CDM AR project area in Rwoho CFR.

CARBON POOLS	DRY MATTER t/ha	ABOVE GROUND BIOMASS IN tC/ha	BELOW GROUND BIOMASS IN tC/ha	TOTAL tC /ha	CO ₂ e/ha
Grass	0.84	0.00*	0.67	0.67	2.46
Woody Perennial	0.23	0.11	0.05	0.16	0.59
Total	1.07	0.11	0.72	0.83	3.05

* According to the methodology (AR-AMS0001 / Version 05) above-ground biomass of grasslands were not considered for baseline calculation

In the table below statistical information of the biomass distribution is provided.

Tab. B-2 Statistical analysis of the baseline biomass assessment using Excel functions.

Parameter	Value for grass	Value for woody perennials
N	177	177
Minimum value in t dry matter per ha	0	0
Maximum value in t dry matter per ha	1.0	4.5
Average value in t dry matter per ha	0.84	0.23
Significance level	0.05	0.05
Confidence	0.1	0.04
CV %	3.1	0.4

Tab.B-3 Grass biomass distribution (t dry matter)

Above ground	Below ground	No plots
0.5	0.14	48
0.5 0.7	0.14 0.1981	54
0.7 1	0.198 0.283	67
>1	>0.283	8

Tab.B-4 Woody perennials biomass distribution (t dry matter)

Above ground	Below ground	No plots
0.75	0.21	48
0.75 1.5	0.21 0.4245	54
>1.5	>0.4245	67

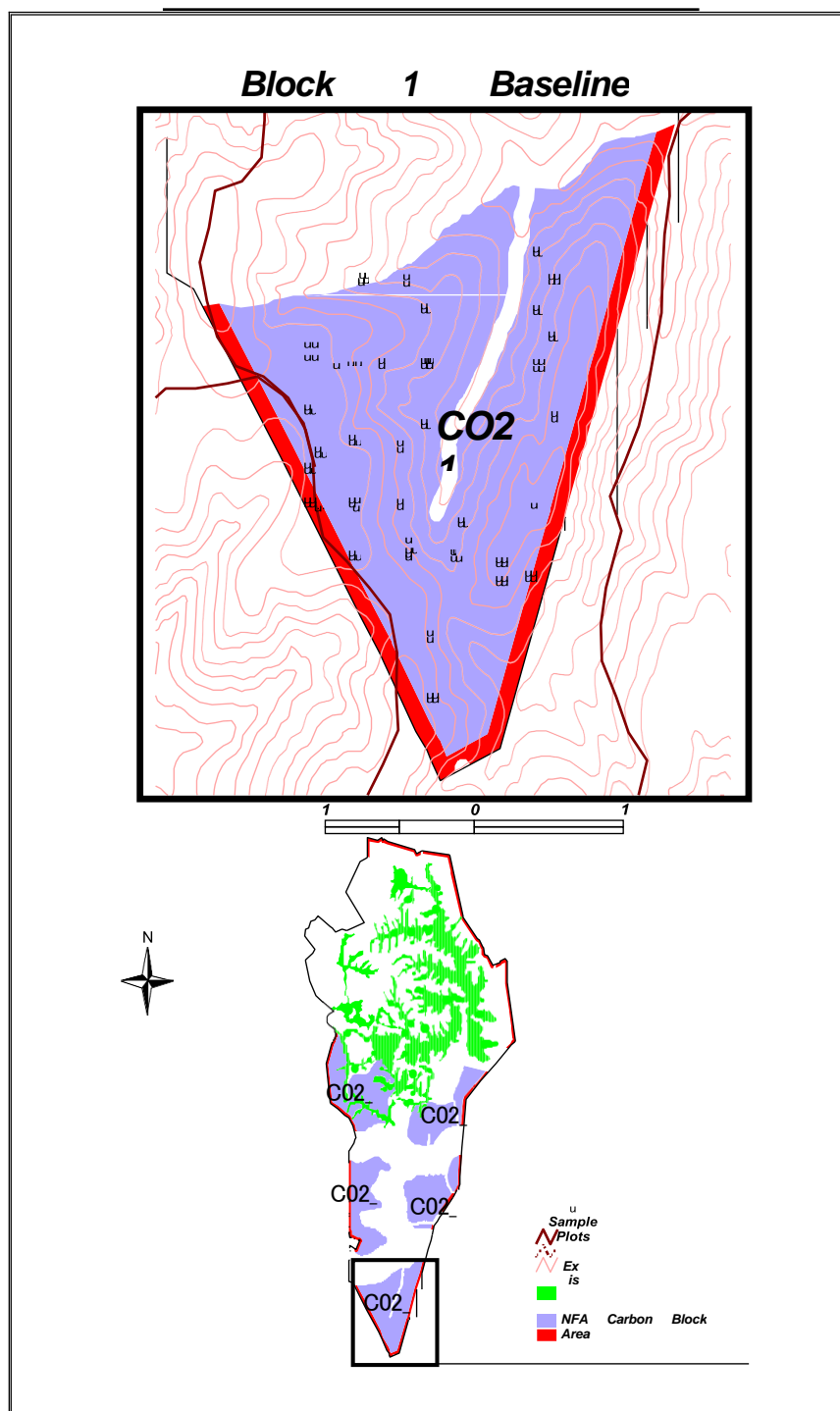


Fig.-6 Location of baseline study sampling plots of project area

Project GHG removals by sinks

Below are details on carbon stock monitoring and the sampling plot design. The inventory and GIS unit of NFA will be in charge of supervision of monitoring of the project carbon.

Step 1: Area monitoring

For carbon monitoring purposes planting monitoring will be conducted with a GPS to determine the planting area and analysed in a Geographic Information System. QA will be done against satellite imagery.

For ex-ante estimation the area planted per species is based on the latest version of the planting

schedule available at the time of this version of the PDD.

Step 2: Carbon stock monitoring

Carbon stocks will be estimated through stratified random sampling procedures and the following equations:

$$P(t) = \sum (P_{A(t)i} + P_{B(t)i}) * A_i * (44/J2)$$

where:

$P(t)$ = carbon stocks within the project boundary at time t achieved by the project activity (t CO₂-e)

$P_{A(t)i}$ = carbon stocks in above-ground biomass at time t of stratum i achieved by the project activity during the monitoring interval (t C/ha)

$P_{B(t)i}$ = carbon stocks in below-ground biomass at time t of stratum i achieved by the project activity during the monitoring interval (t C/ha)

A_i = project activity area of stratum i (ha)

i = stratum i

Stratification for sampling will be the same as the stratification for the ex-ante estimation of the actual net GHG removals by sinks. The calculations shown below will be performed for each stratum.

For above-ground biomass

$PA(t)$ is calculated per stratum i as follows:

$$PA(t) = E(t) * 0.5$$

where:

$PA(t)$ = carbon stocks in above-ground biomass at time t achieved by the project activity during the monitoring interval (t C/ha)

$E(t)$ = estimate of above-ground biomass at time t achieved by the project activity (t dm/ha)

0.5 = carbon fraction of dry matter (t C/t dm)

$E(t)$ will be estimated through the following steps:

Step 3: The diameter at breast height (DBH) or DBH and tree height will be measured

Step 4: Estimate the above-ground biomass (AGB) using Biomass expansion factors and stem volume as follows:

$$E(t) = SV * BEF * WD$$

where:

$E(t)$ = estimate of above-ground biomass at time t achieved by the project activity (t dm/ha)

SV = stem volume (m³/ha)

WD = basic wood density (t dm/m³)

BEF = biomass expansion factor (over bark) from stem volume to total volume (dimensionless)

Biomass expansion factor (over bark) from stem volume to total volume (dimensionless), default value of 1.4 used for Maesopsis and Prunus and 1.3 for Pine.

SV will be estimated from on-site measurements using DBH and height. Consistent application of BEF will be secured on the definition of stem volume (e.g. total stem volume or thick wood stem

volume requires different BEFs). For ex-ante estimations the SV per year will be determined from the production tables for *Pinus caribaea* from Alders, 2003.

Documented local values for *WD* will be used. In the absence of such values, national default values should be used. If national values are also not available, the values should be obtained from table 3A.1.9 of the IPCC good practice guidance for LULUCF.

For below-ground biomass

$PB(t)$ will be estimated for each stratum i as follows:

$$PB(t) = E(t) * R * 0.5$$

where:

$PB(t)$ = carbon stocks in below-ground biomass at time t achieved by the project activity during the monitoring interval (t C/ha)

R = root to shoot ratio (dimensionless)

0.5 = carbon fraction of dry matter (t C/t dm)

Documented national values for R will be used. If national values are not available, the values will be obtained from table 3A.1.8 of the IPCC good practice guidance for LULUCF.

Root to shoot ratios for the species concerned are not available, allometric equation developed by Cairns et al. (1997) or a more representative equation taken from the IPCC good practice guidance for LULUCF, Table 4.A.4 will be used:

$$PB(t) = \exp(-1.085 + 0.9256 * \ln E(t)) * 0.5$$

where:

$PB(t)$ = carbon stocks in below-ground biomass at time t achieved by the project activity during the monitoring interval (t C/ha)

$E(t)$ = estimate of above-ground biomass at time t achieved by the project activity (t dm/ha)

0.5 = carbon fraction of dry matter (t C/t dm)

The same BEF, *WD*, and R will be used in the ex-post calculation.

Project emissions

Project emissions are zero according to the applicable methodology.

Leakage attributable to the project activity

The possibility of leakage from the displacement of activities or people was considered using the following indicators:

Enumeration of cattle kraals near the reserve was done and recorded at the project site, at village, parish and sub-county level. Although the grasslands extend beyond the reserve, it was assumed that all these animals feed outside as well as in the reserve (to be conservative). In the reserve animals generally spend 2 thirds of their daily feeding time (i.e. 14 hours/day). But they only spent a fraction of their total yearly feeding time in the reserve. Rwoho, being a relatively dry area, average grazing capacity of 0.5 (head/ha) is assumed. Time-average number of grazing animals per hectare displaced due to the project activity divided by the average grazing capacity of land for the area, expressed as percentage is less than 10%. It is taken to be representative of all project sites. Thus, no leakage due to cattle grazing is accounted for.

Tab. B-5: Average grazing assessment for Project No.1

Total Animals (Close to site)	Available Grazing Area in + outside Reserve(ha)	Animal /ha	Avg time of day in reserve in %	AvgTime Animal/ha	Avg Time_Animal_ha/ Avg Grazing Capacity
85	2000	0.0425	58	0.0247	5%

The assessment demonstrates that the average grazing is below 10% of the potential and therefore no leakage due to grazing was considered. In addition, the planting activities will force commercial grazers to invest in improved grazing land or zero-grazing systems.

In the project area no people will be displaced (a) and no agricultural production activities (b).

Furthermore, considering that the surrounding area contains no significant biomass no leakage monitoring is required. In the surrounding area the biomass is comparable to the project area (see table B-1 and B-3 above). The plots of the National Biomass Survey 2000 and 2004 located in the surrounding area of the project and expert opinion verified this information.

For this and subsequent crediting periods $L_t=0$.

Net anthropogenic GHG removals by sinks

Following the above calculation steps, the GHG removals by the project activity after 20 years would be: 87,295 tCO₂e.

Yearly estimations is provided in the next section and in the detailed spreadsheet of TARAMS.

B.6.4. Summary of ex ante estimates of net anthropogenic removals

Year	Baseline net removals (t CO ₂ e)	Actual net removals (t CO ₂ e)	Leakage (t CO ₂ e)	Net anthropogenic removals (t CO ₂ e)	Cumulative anthropogenic removals (t CO ₂ e)
2009	0	1,140.94	0	1,140.94	1,140.94
2010	0	524.94	0	524.94	1,665.87
2011	0	1,339.24	0	1,339.24	3,005.11
2012	0	3,054.48	0	3,054.48	6,059.59
2013	0	1,812.33	0	1,812.33	7,871.92
2014	0	1,750.79	0	1,750.79	9,622.71
2015	0	3,303.77	0	3,303.77	12,926.48
2016	0	1,450.15	0	1,450.15	14,376.63
2017	0	3,508.43	0	3,508.43	17,885.06
2018	0	128.16	0	128.16	18,013.22
2019	0	4,974.52	0	4,974.52	22,987.74
2020	0	4,088.74	0	4,088.74	27,076.48
2021	0	7,241.59	0	7,241.59	34,318.08
2022	0	4,936.47	0	4,936.47	39,254.55
2023	0	9,198.45	0	9,198.45	48,452.99
2024	0	8,124.57	0	8,124.57	56,577.56
2025	0	6,145.74	0	6,145.74	62,723.31
2026	0	8,302.10	0	8,302.10	71,025.41
2027	0	8,768.57	0	8,768.57	79,793.98
2028	0	7,501.18	0	7,501.18	87,295.16
Total	0	87,295	0	87,295	

Total number of crediting years				20	
Annual average over the crediting period				4,364.8	

B.7. Monitoring plan

B.7.1. Data and parameters to be monitored

Data/Parameter	Location of the area where the project activity has been implemented
Data unit	UTM co-ordinates
Description	Location of the project area on earth defined in UTM co-ordinates
Source of data	Field survey of the NFA inventory and GIS units
Value(s) applied	-
Measurement methods and procedures	Garmin GPS receiver (± 3 m accuracy) calibrated in UTM Zone 36S. (see Field Carbon Inventory and Monitoring Manual).
Monitoring frequency	Every 5 years
QA/QC procedures	The project boundary is checked and corrected with Very High Resolution and High-Resolution imagery.
Purpose of data	Calculation of Actual net GHG removals
Additional comment	None

Data/Parameter	Location of permanent sample plots
Data unit	UTM co-ordinates
Description	Location of sample plots on earth defined in projected co-ordinates
Source of data	Field survey of the NFA inventory and GIS units
Value(s) applied	-
Measurement methods and procedures	Garmin GPS receiver (± 3 m accuracy) calibrated in UTM Zone 36S. (see Field Carbon Inventory and Monitoring Manual).
Monitoring frequency	Every 5 years
QA/QC procedures	On-the-ground re-checking of the locations is done for 10 % of sample plots (see Field Carbon Inventory and Monitoring Manual).
Purpose of data	Calculation of Actual net GHG removals
Additional comment	None

Data/Parameter	Ai - size of the areas where the project activity has been implemented for each type of strata
Data unit	Ha (hectare)
Description	Size of the areas where the project activity has been implemented for each type of strata
Source of data	Field survey of the NFA inventory and GIS units
Value(s) applied	-
Measurement methods and procedures	Garmin GPS receiver (± 3 m accuracy) calibrated in UTM Zone 36S and very high and high resolution imagery (see Field Carbon Inventory and Monitoring Manual).
Monitoring frequency	Every 5 years
QA/QC procedures	The project boundary is checked and corrected with Very High Resolution and High-Resolution imagery.

Purpose of data	Calculation of Actual net GHG removals
Additional comment	None

Data/Parameter	Diameter at breast height (1.30 m)
Data unit	cm (centimetre)
Description	Diameter of trees within the permanent sample plot measured at 1.30 m along the longitudinal axis of the tree stems
Source of data	Field survey of the NFA inventory and GIS units
Value(s) applied	-
Measurement methods and procedures	Diameter tapes
Monitoring frequency	Every 5 years
QA/QC procedures	10 % of sample plots have been re-visited and tree DBH re-measured and compared with the original measurements (see Field Carbon Inventory and Monitoring Manual and QC report). The following acceptable quality threshold was used: DBH < ± 1.0 cm or 8 %; whichever is greater.
Purpose of data	Calculation of Actual net GHG removals
Additional comment	None

Data/Parameter	Height of tree
Data unit	m (metre)
Description	Height of all trees within the sample plot measured along the longitudinal axis from tree base to top
Source of data	Field survey of the NFA inventory and GIS units
Value(s) applied	-
Measurement methods and procedures	Vertex hypsometer (height measuring device)
Monitoring frequency	Every 5 years
QA/QC procedures	10 % of sample plots have been re-visited and tree height re-measured and compared with the original measurements (see Field Carbon Inventory and Monitoring Manual and QC report). The following acceptable quality threshold was used: Height < ± 15 % or ± 1 meter; whichever is greater.
Purpose of data	Calculation of Actual net GHG removals
Additional comment	None

B.7.2. Sampling plan

a) Stratification

Each small-scale CDM A/R project activity is considered to be strata and has been further divided into sub-strata to consider the different planting year.

However, stratification will be conducted in each monitoring event to address the possible changes of project boundary and planting year in comparison to the project design, and to address the change in carbon stocks more or less variable than that is expected, taking into account data from the monitoring of the overall performance of the proposed A/R CDM project activity and the variation in carbon stock change for each stratum and substratum after the first monitoring event. Substrata will be grouped if they have similar carbon stock, carbon stock changes and spatial variation.

b) Sampling Frame

- Determining the sample size

A precision target of $\pm 10\%$, at a 90% confidence level (t-value) for the mean standard deviation should be reached. In case the required accuracy is not sufficient the sampling intensity will be increased. The number of plots per stratum may be allocated based on the proportion of area. However, it might be reasonable to modify the sample size before each monitoring event based on the variation of the carbon stocks. The below table provides an initial estimate of stratification, but this may be modified in each monitoring period.

Table B-6: Number of monitoring plots for the small-scale project activity and for each tree species

Small-scale CDM AR project No 1	Area in ha	Number of plots in areas planted with		
		Pine	Maesopsi	Prunus
NFA planting area	402.4	12	3	1
Community planting area	65.6	2	1	0

- **Locating sampling plots**

The sample plots will be located randomly, using GPS. Plots will be of 12m radius (452.39 m²) but other sizes and forms may be allowed in each monitoring period.

B.7.3. Other elements of monitoring plan

To ensure the net anthropogenic GHG removals by sinks to be measured and monitored precisely, credibly, verifiably and transparently, a quality assurance and quality control (QA/QC) procedure will be implemented,

a) Reliable field measurements

To ensure the reliable field measurements,

- Standard Operating Procedures (SOPs) for each step of the field measurements, including all detail phases of the field measurements and provisions for documentation for verification purposes, will be developed and adhered to over times;
- Training courses on the field data collection and data analyses will be held for persons involving in the field measurement works. The training courses should ensure that each field-team member have been fully aware of all procedures and the importance of collecting data as accurately as possible. To achieve this, both classroom examination and field examination will be conducted, and only those that have passed the examination can join the team. Test plots will be established and used for the field examination in which all measurement of pertinent components and procedures will be examined;
- A document that shows that these steps have been followed will be presented as a part of the project documents. The document will list all names of the field team and the project leader will certify that the team is trained;
- Any new staff will be adequately trained.

b) Verification of field data collection

To verify that plots have been installed and the measurements taken correctly,

- 10% of randomly selected plots will be re-measured by independent qualified team.
- Key re-measurement elements include the location of plots, DBH and tree height.
- The re-measurement data will be compared with the original measurement data. Any errors found will be corrected and recorded. Any errors discovered will be expressed as a percentage of all plots that have been rechecked to provide an estimate of the measurement error. The following quality targets should be achieved for the re-measurements, compared to the original measurements: a) DBH $< \pm 1.0$ cm or 8 %; whichever is greater; b) Height $< \pm 15$ % or ± 1 meter; whichever is greater.

c) Verification of data entry and analysis

To minimize the possible errors in the process of data entry, the entry of both field data and laboratory data will be reviewed by an independent expert team and compared with independent data to ensure that the data are realistic. Communication between all personnel involved in measuring and analysing data will be used to resolve any apparent anomalies before the final analysis of the monitoring data is completed. If there are any problems with the monitoring plot data that cannot be resolved, the plot should be re-measured or not be used in the analysis.

d) Data maintenance and archiving

Data archiving will take both electronic and paper forms, and copies of all data will be provided to each project participant. All electronic data and reports will also be copied on durable media such as CDs and copies of the CDs are stored in multiple locations. The archives include:

- Copies of all original field measurement data, laboratory data, data analysis spreadsheet;
- Estimates of the carbon stock changes in all pools and corresponding calculation spreadsheets;
- GIS products;
- Copies of the measuring and monitoring reports.

SECTION C. Start date, crediting period type and duration

C.1. Start date of project activity

1 April, 2009 (1/04/2009)

C.2. Expected operational lifetime of project activity

60 years

C.3. Crediting period of project activity

C.3.1. Type of crediting period

Renewable crediting period

C.3.2. Start date of crediting period

1/04/2009

C.3.3. Duration of crediting period

20 years

SECTION D. Environmental impacts

D.1. Analysis of environmental impacts

The NFA has contracted Environmental Assessment Consult Limited to conduct an Environmental Impact Assessment in line with the regulations stipulated by the National Environment Management Authority (NEMA). The main conclusion of the assessment is presented below:

The forest plantation establishment and management will cause some impacts on the forest ecosystem in the short run but these are recoverable through tree planting. Mitigation measures are proposed, if implemented will reduce and eventually eliminate the likely adverse impacts on the environment. It is recommended in this report that mitigation measures identified will be mainstreamed into the FMP and annual operational plans. Generally, besides the fact that the project absorbs considerable amount of carbon from the atmosphere every year, it will further reduce soil erosion, thereby improving the quality of downstream water supplies and may ameliorate local climate to some limited extent, commensurate with the relatively small areas to be reforested at the different sites.

NEMA formally approved the project on July 31, 2006. The full report is available upon request from the project developer.

D.2. Environmental impact assessment

The implication is not that there may be a negative impact per se, as water quality will be greatly improved, but that the positive impacts are not as great as anticipated.

For example, trees are known to use more water than grass and scientific evidence from equivalent sites suggests there may be a reduction in total flows of water from the watershed, but in severely compacted sites, better infiltration resulting from tree roots breaking up the compaction, may improve the recharging of ground water. And, through the establishment of forest plantations, the abundance and variety of species may fall in areas planned for forest plantations.

SECTION E. Socio-economic impacts

E.1. Analysis of socio-economic impacts

The host party has no specific procedures for socioeconomic impact assessment. However, the project was successfully assessed against the sustainable development criteria developed by the Climate Change Secretariat in Uganda (ONA). Furthermore, a socio-economic assessment was carried out by the NFA in the framework of the feasibility study. Some key findings are presented below (see section F).

E.2. Socio-economic impact assessment

See section F.

SECTION F. Local stakeholder consultation

F.1. Modalities for local stakeholder consultation

In March 2005 (22nd to 26th) a socio-economic baseline assessment was conducted in the proposed project area. Meetings have been conducted in different villages (Rwoho, Kihanga and Kirungu parish) with village leaders, selected members and in particular woman groups to explain the purpose of the planned project activities and to receive information on the prevailing livelihood framework (see field report from Xavier Mugumya 2005). Follow-up stakeholder meetings have been conducted on June 30th, 2005, July 11th, 2005, and March 1st, 2006 with all communities living near the 5 small-scale project sites. The latter have been organized by RECPA, but the information below represents all Community Associations and not only RECPA. In addition, RECPA conducted awareness raising meetings in all parishes close to the 5 small-scale projects to inform farmers about the project and to invite them to participate in the CDM reforestation project. NFA field staff on the ground collaborated with community members during project preparation activities.

F.2. Summary of comments received

Population density and family structure

The CFR is situated in a region with a medium population density of 160 people per km² based on the 1991 census. Most of the people interviewed were resident in the district. Immigration to the area began roughly in 1945. Most of the immigrants came from Kabale (then Kigezi) district (SW-Uganda). The most recent migrants settled in the area in 2000. The educational level is low, illiteracy is especially common among adults above 40 and older people. Access to schools in the area is reasonable with the distances rarely exceeding 3km. Family size in average is 8-9 people.

Livelihood system

Most of the farmers are involved in subsistence farming and have small land holdings, the majority (80 %) own below one hectare, the biggest areas mentioned was 10 ha. The crops grown are bananas (matooke), beans, sorghum, cassava, groundnuts, millet, Irish and sweet potatoes. Coffee is grown occasionally. About 50 % of the people do have as of yet planted trees on their farms with an average of about 100 trees (one individual planted as much as 1,500 others only 10). Trees are planted for fuel wood, timber and poles. The dominating ethnic group in the region, the Bashiga, is known to have a cultural inclination to tree growing. Some of the produce is sold on the local markets. In addition to agriculture, most farmers do have some livestock (mainly chicken, goats or cows, in some cases sheep). However, there are a few larger herds (>25 animals) passing irregularly through the area which are owned by non- resident pastoralists who use hired herdsmen. These actually can afford to sleep over night in the forest and let the animals graze. Alternative sources of income are very limited: 20 % were working as casual labourers another 20 % were running a small trading business in the village. The only skilled professions were 1 teacher, 1 builder and 1 contractor.

There is no running water in most villages; people collect water from the valley bottoms in the CFR. A few of the residents own small collection tanks to collect rain water.

Potential social benefits from the project activities

a. Income

Apart from selling produce at the local markets, the project region is almost completely lacking income generation opportunities. Therefore, the re-vitalization of the forestry sector creates employment opportunities and is highly beneficial for the integrity of the local communities in the area. The local communities further benefit from the provision of fuel-wood. The employment plan for the project indicates a need for approx. 500 people in the establishment phase of the project. The number of people is estimated based on previous planting experience from the NFA and the private sector. Particularly women find new employment opportunities in nursery work and weeding.

After the establishment phase about 200 people will be needed for fire protection, thinning and pruning (until year 14). The necessary labour will be employed locally involving the local councils and opinion leaders. If sufficient labour cannot be found locally not more than 40 % labour from outside will be contracted. For the period between last thinning and harvest about 50 permanent workers are needed which will all be employed locally. Wages will be in the range of US\$ 2 per day which reflects the local labour prices. In addition to the direct employment, the support to private woodlot owners will provide further employment. The NFA will monitor respective activities.

b. Capacity building

Tree growing skills already exist, in particular among the 150 RECPA members. They have established more than 10 ha already. However, since there was no access to improved seeds the quality of the plantation is not very impressive. In addition, since forestry was a main source of income in the past people still have basic skills but they have to be up-graded.

c. Access to markets

The revitalization of the plantation sector in the area will contribute to improved infrastructure facilitating market access. The distance to the next town (Mbarara) is between 70 km and 100 km making it difficult to access for the local communities. The sale of timber will allow for the

development of small businesses in the timber sector, local value-adding activities will be encouraged. Local timber from private woodlots will gain from the marketing structures of the NFA.

d. Access to financial resources

The communities currently have no access to credit facilities because they cannot demonstrate that they have an income. With the project they are able to receive an income and subsequently will be eligible to apply for a microfinance loan.

Potential Social Risks

Since the most significant direct benefits are the employment opportunities and since labour needs will exceed local capacities at least for the first 7 years of the project severe conflicts from people or social groups excluded from actively participating in project activities are not to be expected.

Nevertheless, there are some possible negative social impacts or areas of potential conflict:

- Reduced land for mostly wealthy people who graze their herds illegally in the reserve. Because the project is going to ensure the reserve's integrity illegal grazers will lose 'free' grazing land. Considering the increasing enforcement of the law this will not result in significant leakage outside the project area. Livestock businesses will adopt zero grazing techniques or establish improved grazing land-use system. Zero grazing means livestock is kept in paddocks and food is provided.
- Local usage rights like domestic firewood, water drinking points for animals and local medicinal herbs will remain unchanged.
- The NFA is legally required to community forest management plans. These plans are consultative and minutes are appendixes to any planning activities that take place.

Possible mitigation of the negative social impacts will include:

- The collaborative forest management agreement stipulating rights and responsibilities is the main instrument to mitigate the potential negative impacts.
- NFA has a unit responsible for legal community interests which are negotiated mutually.
- Involvement of local leaders in the general forest activities and speaking to the local council meetings helps to lower existing resistance or uncertainty.
- NFA will avail two employees to particularly include community interests in plantation-development.

During the stakeholder consultations on July 11th 2006 the 38 participating community members expressed their strong interest in reforestation for environmental protection. The following objectives of the community members were reported in the minutes of this meeting:

- To protect the environment
- To strengthen community relationship with the responsible body (NFA)
- To participate in reforestation, soil and erosion control
- To enhance climatic stability
- Expect to enter into a contractual agreement with the NFA that ensures their right to harvest the trees and to benefit from the revenue of emission reductions. In return they are prepared to plant trees and to replant after harvesting
- Depending on the performance community members would like to have additional land for tree planting in a subsequent project
- Highly interested to work within the plantations (salary expectations range from US\$ 0.9 - US\$ 3.4/day).
- Women in particular were interested to benefit from job opportunities (nursery work and weeding). It is expected that all NFA jobs will be contracted to the local communities.

F.3. Consideration of comments received

The comments received had a strong influence on the framework for collaboration with communities in the context of the project activities, reflected in the collaborative forest management agreement and the tree planning license.

It is envisioned that 310 ha will be reforested by RECPA members and other community groups. The consultations indicated that this is a feasible size to be managed by the communities. However, land will be distributed based on tree planting performance. Taking account of the most frequently mentioned barriers to establish community woodlots, the NFA will provide seedlings and technical advice to the communities and will cover the carbon monitoring costs for the area. The NFA will offer the respective carbon credits within the framework of the Emission Reductions Purchase Agreement to the prospective buyer and will handle the payments. The Communities will receive the full revenue achieved from the produced VERs. The buyer of the emission reductions is legally entitled to comment and approve the terms of any license or agreement with community groups. The stakeholder comments will be also considered in the Collaborative Forest Management Plan that will be developed by RECPA and other community groups with support from the NFA.



Fig.-6 Project area of the Nile Basin Reforestation Project



Fig.-7 RECPA stakeholder meeting with representatives of NFA and ENCOFOR at Rwoho to prepare CDM A/R project activities in July 2005

SECTION G. Approval and authorization

Each project participant listed in the PDD is authorized by at least one Party involved in the project activity in the respective letter of approval or in a separate authorization letter.

All letters are available on the [viewing page of the project](#) on the UNFCCC website as the project is already registered.

Appendix 1. Contact information of project participants

Organization name	National Forestry Authority (NFA)
Country	Uganda
Address	Spring Road Plot 10/20, P.O. Box 70863, Kampala
Telephone	+256 (0) 414- 230365/6; +256-(0)414-360406; +256-(0)31-264-035/6
Fax	+256 (0) 414- 230 369
E-mail	info@nfa.org.ug , hudsona@nfa.org.ug
Website	http://www.nfa.org.ug
Contact person	Mr. Hudson Andrua, Executive Director

Organization name	Italian Ministry for the Environment, Land and Sea
Country	Italy
Address	Via Cristoforo Colombo 44 - PO BOX 00147 – ROME
Telephone	+ 39 06 5722 8101
Fax	
E-mail	SVI-UDG@minambiente.it
Website	www.minambiente.it
Contact person	Francesco La Camera

Organization name	International Bank for Reconstruction and Development (IBRD) as the Trustee for the BioCarbon Fund (BioCF)
Country	USA
Address	1818 H Street Northwest, Washington DC 20433
Telephone	+1-202-473-8003
Fax	+1-202-522-7432
E-mail	IBRD-carbonfinance@worldbank.org
Website	
Contact person	Daniel Radack

Organization name	Kingdom of Spain - Ministry for the Ecological Transition & Ministry of Economy and Business
Country	Spain
Address	Alcala 92, Madrid 28009, Spain
Telephone	+34914361546
Fax	
E-mail	and@mapama.es
Website	
Contact person	Valvanera Ulargui Aparicio

Organization name	Eco-Carbone S.A.S.
Country	France
Address	33 Avenue Duquesne, Paris 75007, France
Telephone	
Fax	
E-mail	olivier.kreiss@orange.fr
Website	
Contact person	Olivier Kreiss

Organization name	Government of Luxembourg – Ministry of the Environment, Climate and Sustainable Development
Country	Luxembourg
Address	4, Place de l'Europe, L-1499, Luxembourg
Telephone	+352 247 85816
Fax	
E-mail	Henri.haine@mev.etat.lu
Website	
Contact person	Henri Haine

Organization name	Japan Petroleum Exploration Co.,Ltd.
Country	Japan
Address	Sapia Tower, 1-7-12, Marunouchi, Chiyoda-ku, Tokyo 100-0005, Japan
Telephone	+81 3 6268 7050
Fax	
E-mail	seiji.yoshikawa@japex.co.jp
Website	
Contact person	Yoshikawa Seiji

Organization name	Sumitomo Chemical
Country	Japan
Address	2-27-1, Shinkawa, Chuo-ku, Tokyo 104-8260, Japan
Telephone	+81 54543 5273
Fax	
E-mail	komotom@sc-sumitomo-chem.co.jp
Website	
Contact person	Mitsuaki Komoto

Organization name	Idemitsu Kosan Co., Ltd
Country	Japan
Address	3-2, Daiba 2 Chome Minato-ku, Tokyo 135-8074, Japan
Telephone	+81 3 5531 5641
Fax	
E-mail	takabumi.hasegawa.8890@idss.co.jp
Website	
Contact person	Takabumu Hasegawa

Organization name	Japan Iron and Steel Federation (JISF)
Country	Japan
Address	3-2-10, Nihonbashi-Kayabacho, Chuo-ku, Tokyo 103-0025, Japan
Telephone	+81 0 3 3669 4837
Fax	
E-mail	ibuki@jisf.or.jp
Website	
Contact person	Takanao Ibuki

Organization name	The Okinawa Electric Power Co., Inc
Country	Japan
Address	5-2-1, Makiminato, Urasoe, Okinawa, 901-2602 Japan

Telephone	+81 98 877 2341
Fax	+81 98 877 4607
E-mail	global_eg@okiden.co.jp
Website	
Contact person	Makoto Yagi

Organization name	Tokyo Electric Power Company Holdings, Inc
Country	Japan
Address	1-2 Uchisaiwai-cho, 1-Chome, Chiyoda-ku, 100-8560 Tokyo, Japan
Telephone	+81 3 6373 111
Fax	+81 3 3504 1570
E-mail	carbonteam@tepcoco.jp
Website	
Contact person	Nomura Takeshi

Organization name	Sumitomo Joint Electric Power Co., Ltd.
Country	Japan
Address	16-5 Isouracho, Niihara City, Ehime Prefecture, Japan
Telephone	+81 897372146
Fax	+81 897340170
E-mail	Ohnishi-t@sumikyo.co.jp
Website	
Contact person	Takao Onishi

Organization name	Suntory Holdings Limited
Country	Japan
Address	2-3- Daiba, Minato-ku, Tokyo 135-8631, Japan
Telephone	+81 3 5579 1567
Fax	+81 3 5579 1755
E-mail	Yuko_Koshiishi@suntory.co.jp
Website	
Contact person	Yuko Koshiishi

Appendix 2. Affirmation regarding public funding

The NFA will use revenues from licensing to finance the 5 small-scale A/R CDM projects. Therefore, the projects do not result in a diversion of official development assistance and is separate from and is not counted towards the financial obligations of those Parties.

The NFA is in charge of all Central Forest Reserves on behalf of the Government of Uganda as defined by the Uganda Forestry and Tree Planting Act. Its financial viability is fundamental to meet the obligations of sustainable management and conservation of the Reserves. According to the initial plan the NFA should be financially self sustaining by the fourth year of operations. Current financial projections find this realistic with regards to funding the core operations, but there will be need for external funding to continue investing in new plantations after the support is phasing out, and until the new timber plantations provide revenue.

For the NFA 2004-05 was the first year of operations and the institution received activity-specific funding from two donor arrangements:

1. Under the Forest Resource Management and Conservation Project from the EC/European Development Fund the NFA receives €2.6 million, ending 2006. 2006 is the last year of the programme, with an estimated funding of €1.6 million.
2. UK Department for International Development and Norway provided € 3.3 million as a Start-Up Fund to co-fund infrastructure development and to provide working capital for the establishment phase of the NFA. The programme ends 2007, and € 2.5 million remains for 2006 and 2007.

Appendix 3. Applicability of methodologies and standardized baselines

Intentionally left blank

Appendix 4. Further background information on ex ante calculation of net anthropogenic removals

Intentionally left blank

Appendix 5. Further background information on monitoring plan

Intentionally left blank

Appendix 6. Summary report of comments received from local stakeholders

Intentionally left blank

Appendix 7. Summary of post-registration changes

1. Temporary deviations from the registered monitoring plan, applied methodologies, standardized baselines or other methodological regulatory documents

Sampling

The clarification AR_AM_CLA_0019 “General guidance on cases where the uncertainty in estimation of carbon stocks exceeds allowable maximum uncertainty” further clarified that registered project activities that do not apply the methodological tool “Estimation of carbon stocks and change in carbon stocks of trees and shrubs in A/R CDM project activities” may apply the provisions relating to uncertainty contained in the tool in lieu of the uncertainty-related requirements applicable to the project activities, if project participants choose to do so. Hence, the provisions contained in the tool “Estimation of carbon stocks and change in carbon stocks of trees and shrubs in A/R CDM project activities” (Version 04.2) with regard to uncertainty will be applied. This means that if a 10% of margin of error at 90% of confidence level is not achieved, the discount factors contained in Appendix 2 will be applied.

2. Corrections

The following corrections were made and integrated into version 08 of the PDD completed on 10 December 2019.

Biomass expansion factor

The registered PDD gives a Biomass Expansion Factor (BEF) of 1.32 for Pine, which was sourced from Table 3A.1.10 of the 2003 IPCC LULUCF GPG for Pines, as required by the applicable methodology. However, the value provided by the source is 1.3 not 1.32.

Survival monitoring

Section D.8 of the registered PDD describes in Step 1 requirements for the monitoring of tree survival which are applicable to forestry operations, not the monitoring of the actual net GHG removals. The applicable methodology AMS0001 (Version 5.0) does not require the monitoring of tree survival, but the monitoring of carbon stocks. In order to make the PDD aligned to the applicable methodology, Step 1 described in the registered PDD will be removed.

3. Permanent changes to the registered monitoring plan, or permanent deviation of monitoring from the applied methodologies, standardized baselines, or other applied standards or tools

Monitoring of data and parameters

The applicable methodology requires monitoring of “Total CO₂” and “Basic wood density”.

The “Guidelines on application of specified versions of AR CDM methodologies in verification of registered AR CDM project activities” (Version 1.1) indicate deviations to methodologies of A/R activities that are acceptable by default. The list of acceptable deviations show that for “Monitoring of data and parameters” the following shall be allowed: (i) Only data and parameters obtained from field measurement are required to be monitored; (ii) Monitoring is not required for data, parameters, or variables appearing as intermediate values in calculation steps and those taken from existing sources (e.g. published literature).

As a result, the parameters “Total CO₂” and “Basic wood density” will not reported as monitored parameters and this will be updated into version 08 of the PDD completed on 10 December 2019.

4. Changes specific to afforestation or reforestation project activity

The following changes have been integrated into version 08 of the PDD completed on 10 December 2019.

Species

The species planted have changed. While the PDD indicated the plantation of *Pinus caribaea*, the project has also used *Pinus oocarpa* due to shortage of *Pinus caribaea* seedlings. The species is technologically the same as *Pinus caribaea* so it does not have an impact on additionality and baseline determination. Hence according to “Guidelines on accounting of specified types of changes in A/R CDM project activities from the description in registered project design documents” (Version 2) paragraph 4 b this change may be considered minor and the PDD may be updated without prior approval from the board.

Planting schedule

The project has not being implemented year-wise in accordance with the plan of the PDD, resulting in a portion of the project area not being planted. According to the “Guidelines on accounting of specified types of changes in A/R CDM project activities from the description in registered project design documents” (Version 2) paragraph 4 this change may be considered minor and the PDD may be updated without prior approval from the board.

Change to QA/QC procedures

The “Guidelines on accounting of specified types of changes in A/R CDM project activities from the description in registered project design documents” (Version 2) allows projects to “Changes in quality assurance/quality control (QA/QC) procedures, where it can be demonstrated that the changed QA/QC procedures are used by the National Forest Inventory or were applied in another registered A/R CDM project activity”.

The registered project “Reforestation of croplands and grasslands in low income communities of Paraguari Department, Paraguay” (Ref. 2694), indicates in chapter B.8.2, page 51 of the registered PDD (registered 06.09.2009) that as part of QA/QC 10% of the plots should be re-measured setting the following thresholds:

- DBH: $< \pm 10\%$
- Height: $< \pm 20\%$

Moreover, such project does not contain any provisions for an uncertainty assessment based on the re-measurements.

The project will use these procedures instead of those contained in the original PDD, yet with more restrictive thresholds:

- DBH $< \pm 1.0$ cm or 8 %; whichever is greater
- Height $< \pm 15$ % or ± 1 meter; whichever is greater;

Moreover, the project will eliminate the requirements on uncertainty assessment. These requirements constituted a legacy of an older version of the methodology which should not be required. According to paragraph 3 b of the “Guidelines on application of specified versions of AR CDM methodologies in verification of registered AR CDM project activities” (Version 1.1) *“Requirements related to “uncertainty assessment”, “uncertainty analysis”, “methods of combining uncertainties”, and “uncertainty in expert judgement” are superfluous and compliance with these requirements shall not be enforced”*.

Plot size

The plot used in the forest inventory has been changed from 400 m² (20mx20m) to a circular plot of 12 m radius (452.39 m²). According to the “Guidelines on accounting of specified types of changes in A/R CDM project activities from the description in registered project design documents” (Version 2) paragraph 4a this change may be considered minor and the PDD may be updated without prior approval from the board.

Sampling (targeted precision, permanent sampling plots, stratification and sample allocation)

The applicable methodology indicates that strata shall be defined by “other stratification approach that can be shown in the PDD to estimate the project biomass stocks to targeted precision level of $\pm 10\%$ of the mean at a 95% confidence level” and requires the establishment of permanent sampling plots.

The “Guidelines on application of specified versions of AR CDM methodologies in verification of registered AR CDM project activities” (Version 1.1) indicate deviations to methodologies of A/R activities that are acceptable by default. The list of acceptable deviations show that for “Sampling design, sample plot lay-out, and marking of permanent sample plots” the following shall be allowed: (i) Use of temporary sample plots; (ii) Random lay-out of sample plots; (iii) A maximum allowable relative margin of error of the mean, for estimation of above-ground tree biomass, of $\pm 10\%$ at 90% confidence level. As a result, the plots will not be required to be permanent and the allowable relative margin of error will be $\pm 10\%$ at 90% confidence level.

Moreover, no stratification criteria and sampling intensity will be prescribed in the PDD and these will be defined in each monitoring event. According to the “Guidelines on accounting of specified types of changes in A/R CDM project activities from the description in registered project design documents” (Version 2) paragraph 4 k and 4 m changes in stratification and in the number of sample plots and their allocation to strata may be considered minor and the PDD may be updated without prior approval from the board.

Appendix 8. Declaration on small-scale afforestation and reforestation project activity

10/20 Spring Road
PO Box 70863

Kampala, Uganda
www.nfa.org.ug



Tel: 031-264 035/6
041 230365/6
Fax: 041 230369
info@nfa.org.ug

NFA/N/08/08

March 25, 2008

**STATEMENT OF DECLARATION OF LOW INCOME COMMUNITIES AND
INDIVIDUALS**

The National Forestry Authority as the participant of the "Uganda Nile Basin Reforestation Project No 1, 2, 3, 4, and 5" (the "project") wishes to declare that the proposed CDM small-scale AR project activity is developed and implemented in conjunction with low-income communities and individuals as determined by the host Party in compliance with the requirements for Decision 6/ CMP.1 ANNEX section 15 (b)

A handwritten signature in black ink, appearing to read 'Damian B. Akankwasa', with the date '26/3/08' written below it.

Damian B. Akankwasa
Executive Director,