



Monitoring report form for CDM project activity
(Version 07.0)

MONITORING REPORT

| | | |
|---|--|--|
| Title of the project activity | Dagachhu Hydropower Project, Bhutan | |
| UNFCCC reference number of the project activity | 2746 | |
| Version number of the PDD applicable to this monitoring report | Version 9.2 dated 26/08/2013 | |
| Version number of this monitoring report | 01 | |
| Completion date of this monitoring report | 30/07/2020 | |
| Monitoring period number | Fifth Monitoring Period (05) | |
| Duration of this monitoring period | 12 months 01/01/2019 to 31/12/2019 (first and last day are Included) | |
| Monitoring report number for this monitoring report | 01 | |
| Project participants | 1. Bhutan: Dagachhu Hydro Power Corporation Limited 2. India: Tata Power Trading Company Ltd. | |
| Host Party | Bhutan | |
| Applied methodologies and standardized baselines | ACM0002 ver. 7 - Consolidated methodology for grid-connected electricity generation from renewable sources | |
| Sectoral scopes | Sectoral Scope 01 - Energy industries (renewable/ non-renewable sources) | |
| Amount of GHG emission reductions or net anthropogenic GHG removals achieved by the project activity in this monitoring period | Amount achieved before 1 January 2013 | Amount achieved from 1 January 2013 |
| | 0 | 362,130 |
| Amount of GHG emission reductions or net anthropogenic GHG removals estimated ex ante for this monitoring period in the PDD | 511,872 | |

SECTION A. Description of project activity

A.1. General description of project activity

>> The Dagachhu Hydropower Project with an installed capacity of 126 MW (2 units of 63 MW each) is a run-of-river hydropower project which is located on Dagachhu River in Dagana Dzongkhag (district) in Bhutan (the 'Project' or 'Dagachhu HPP'). The overall purpose of the Project is to generate electricity based on renewable energy sources. The electricity generated by the Project is being delivered to the regional grid consisting of Bhutan and the Indian grid¹. The Project leads to reduce the greenhouse gas emissions while displacing the power which would otherwise be generated from the fossil fuel based electricity generation plants such as coal, diesel, gas, etc. Furthermore, the hydropower generated by the Project has contributed in increasing the share of renewable energy in the regional grid.

For Bhutan, the Project during the applied monitoring period has contributed with the great benefits to the national economy through the production and sale of hydropower. The Project has also contributed to the national environmental sustainability while reducing carbon dioxide (CO₂) emissions in the regional grid of Bhutan and grid of India. Furthermore, implementation of this Project in Bhutan was carried out within an overall CDM capacity building project, thereby providing the project developer (Dagachhu Hydro Power Corporation Limited – hereafter referred as DHPC) with necessary skills and know-how to utilize its CDM potential for other projects in the pipe line.

The development of the Project had improved access to public services, telephone services, roads, water supply and electricity. The construction of new access roads and the up-gradation of existing roads had improved the access to the Dagana Dzongkhag district. In general, the Project had provided significant social benefits to local community in terms of additional employment and business opportunities, better road access and electrification of the area and had improved the living standard.

For India, the Project contributes to the achievement of the national sustainability goals:

- Socio-Economic well-being: The Project supplies power to Indian grid and contributes in reducing chronic deficit.
- Environmental well-being: The Project displaces the power which would otherwise be generated from fossil fuel such as coal, diesel, gas etc.

The Civil Works of the Project was awarded to the Contractor on 20/07/2009 and Electro-Mechanical Works on 27/07/2009. The construction of the Project began from 01/10/ 2009. The Unit 1 of the Project was commissioned on 21/02/ 2015, the Unit 2 was commissioned on 15/03/2015.

The total emission reductions achieved during the monitoring period (01/01/2019 to 31/12/2019) is 362,130 tCO₂e.

A.2. Location of project activity

>> Dagachhu Hydropower Project is located in Dagana Dzongkhag (District) in Bhutan on the Dagachhu River.

The Dagana Dzongkhag is one of the remotest districts in Bhutan. Its total area is approximately 1400 km² and it lies between 26°50'N to 27°17'N and 89°41'E to 90°5'E. The Dzongkhag falls within the temperate zone in the north and sub-tropical zone in the south, with wet summers and cool and dry winters. About 79% of the total area is covered with forest. The Project uses the water of the Dagachhu, which is a tributary stream to the Punatsangchhu (Sunkosh) that drains into the Brahmaputra in India. The total size of the catchment area utilized by the Project is 676 km². The elevation within the catchment ranges from approximately 800 m to 4000 m.

¹ Eastern grid of India was integrated into the Northern, Eastern, Western, and North-Eastern regional grid (NEWNE grid) of India, and further the NEWNE grid is integrated with the Southern Grid (SR) of India also.

The powerhouse is located about 11.5 km upstream of the junction of the Dagachhu and the Punatsangchhu. The intake is about 8.8 km upstream of the powerhouse.

The geographical coordinates of the Project are as follow;

Powerhouse: Latitude 26°57'56.1", Longitude 89°57'0 9.2"

Dam site: Latitude 27°01'50.2", Longitude: 89°55'27 .7"



Figure 1: Project Location

A.3. Parties and project participants

| Parties involved | Project participants | Indicate if the Party involved wishes to be considered as project participant (Yes/No) |
|------------------|--|--|
| Bhutan (host) | Dagachhu Hydro Power Corporation Limited | Yes |
| India | Tata Power Trading Company Ltd. | No |

A.4. Reference to applied methodologies and standardized baselines

>> The approved methodology applied is ACM0002 (Version 7) - Consolidated methodology for grid connected electricity generation from renewable sources.

For more information regarding the methodologies please refer to:
<https://cdm.unfccc.int/methodologies/PAmethodologies/approved>

A.5. Crediting period type and duration

>> Crediting period: 01/04/2014 – 31/03/2021 (Renewable)

Start date of crediting period: 01/04/2014

Length of crediting period: 7 years (Renewable)

SECTION B. Implementation of project activity

B.1. Description of implemented project activity

>> The Project consists of a diversion weir, desilting chamber, head race tunnel, surge & pressure shaft, powerhouse and switchyard. The diversion weir diverts the water into the head race tunnel through channel and desilter. The water after reaching the bottom of surge shaft drops 271m to the powerhouse driving the turbine and generator to produce electricity. The electricity generated at 11kV by the generator is step up to 220kV in the switchyard and is fed into the Bhutan grid. The transmission line within Bhutan is used for transmission of electricity until India-Bhutan border and then is fed into the grid of India.

The details of the specification of the Generator and Turbine is as shown in the table below;

Generator

| | |
|------------------------|----------------|
| Manufacturer | Alstom |
| Type | SAV 435/175/22 |
| Power factor | 0.9 lagging |
| Rated Speed | 272.1/min |
| Rated Frequency | 50Hz |
| Power Output | 63MW |
| Stator Voltage/Current | 11kV/3674A |
| Rotor Voltage/Current | 182V/973A |
| Insulation Class | F |
| | |

Turbine

| | |
|-----------------------|---------------------|
| Manufacturer | Andritz |
| Rated Speed | 272.7 rpm |
| Net Head | 282 m |
| Rated Output | 63MW |
| Rated Discharge | 25m ³ /s |
| Number of Nozzle | 6 |
| Rotation | Clockwise |
| Year of manufacturing | 2012 |
| Year of Commissioning | 2014 |

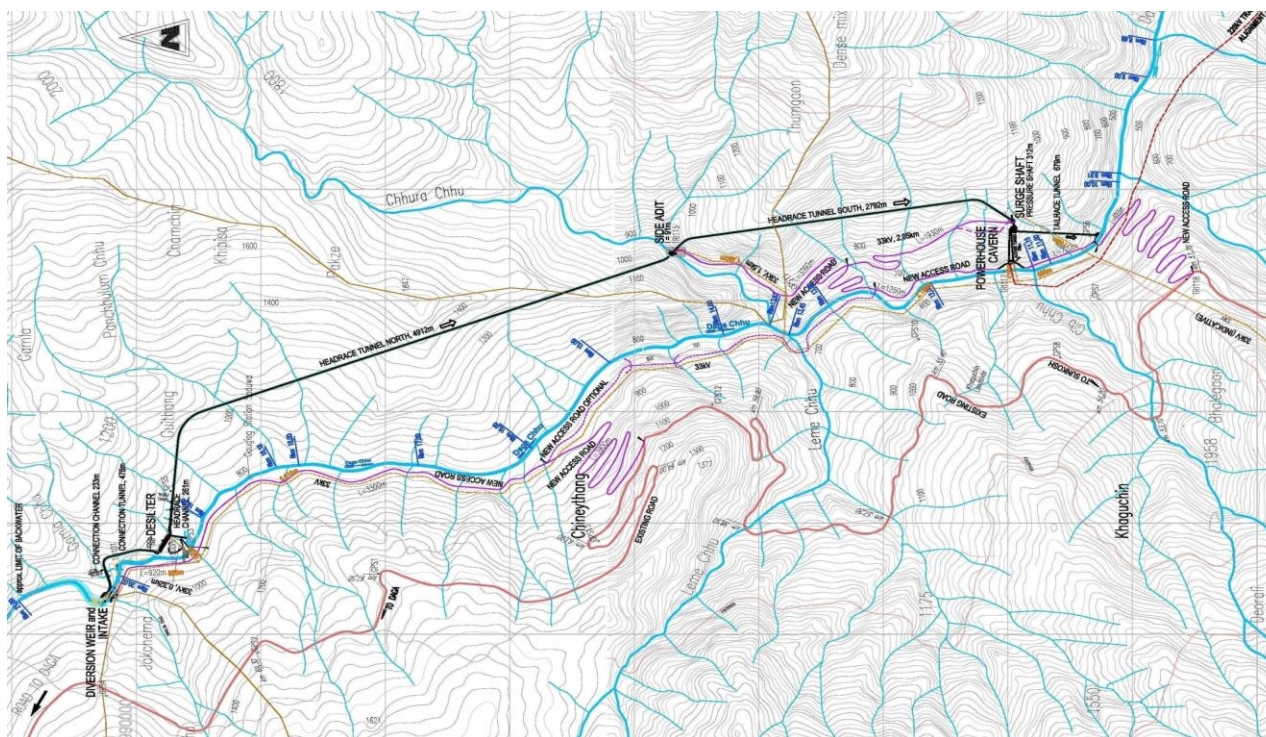


Figure 2: Overall layout of the Dagachhu Hydropower Project

All the components of the Project were constructed and implemented as per the description in the revised registered PDD. The two turbine-generator units (Unit 1 and Unit 2) were put into operation on 21/02/2015 and 15/03/2015 respectively. The Project is being operated and monitored as per the monitoring plan of the registered PDD.

The details of the power plant shutdown during the Monitoring period are as indicated in the table below;

| Date | Outages in Hrs. | | | Remarks |
|--------|-----------------|--------|--------|---|
| | Planned | System | Forced | |
| Jan-20 | | | 1.45 | fault in relay of auxiliary excitation transformer. |
| Feb-19 | | | 0.58 | 110V DC supply failed in U1 Turbine solenoid shut down valve while maintenance are working. |
| Jun-19 | | 0.93 | | Western grid failure. |
| Jul-19 | | | 0.72 | Unit-I tripped on GE COOL 1,2,5,6 TEMP HIGH |
| | 2.48 | | | To replace U#2 faulty deflector position sensor of deflector#2. |
| Sep-19 | | 0.93 | | Emergency shutdown to attend the oil leakages in hydraulic pipelines of intake gate. |
| | | 0.93 | | |
| Oct-19 | | | 0.85 | To replace wornout carbon brushes. |
| | | | 0.57 | Jerk on 33KV and operated Mode bus. |
| Nov-19 | | 0.90 | | 220kv RUR_SEM feeder shutdown |
| | | 0.65 | | tripping at Jigmeling. Protection relay (micom P643). |
| Dec-19 | | | 0.17 | malfunction of Excitation (over excitation alarm). |
| | 2.48 | 4.35 | 4.33 | |

B.2. Post-registration changes

B.2.1. Temporary deviations from the registered monitoring plan, applied methodologies or standardized baselines

>> No deviation in monitoring plan, applied methodology and standardised baseline.

B.2.2. Corrections

>> Not Applicable

B.2.3. Changes to the start date of the crediting period

>> The crediting period of the Project was revised to 01/04/2014 – 31/03/2021 (Renewable). Due to delay in the actual commissioning of the generating Unit 1 and Unit 2, the project developer has requested UNFCCC to change the crediting period from 01/01/2012 – 31/12/2018 to 01/04/2014 – 31/03/2021. The request was approved by UNFCCC on 06 November 2013 (with effective approval date of 04 November 2013).

B.2.4. Inclusion of monitoring plan

>> Not applicable

B.2.5. Permanent changes to the registered monitoring plan, or permanent deviation of monitoring from the applied methodologies, standardized baselines, or other applied standards or tools

>> There is no change in the monitoring plan. While the registered PDD had envisaged Eastern grid of India as the baseline for calculation of emission factor, the Eastern grid of India had been integrated into Northern, Eastern, Western, and North-Eastern regional grid (NEWNE grid) of India. The NEWNE grid has been further synchronized with the Southern Grid too, thereby forming an integrated Single Indian Grid. This integration of the grids was beyond under the control of the project developer. Since the project activity displaces the grid electricity of Indian grid, the emission factor of the Indian grid as published by Central Electricity Authority of India has been used for calculation of emission reductions from the project activity.

B.2.6. Changes to project design

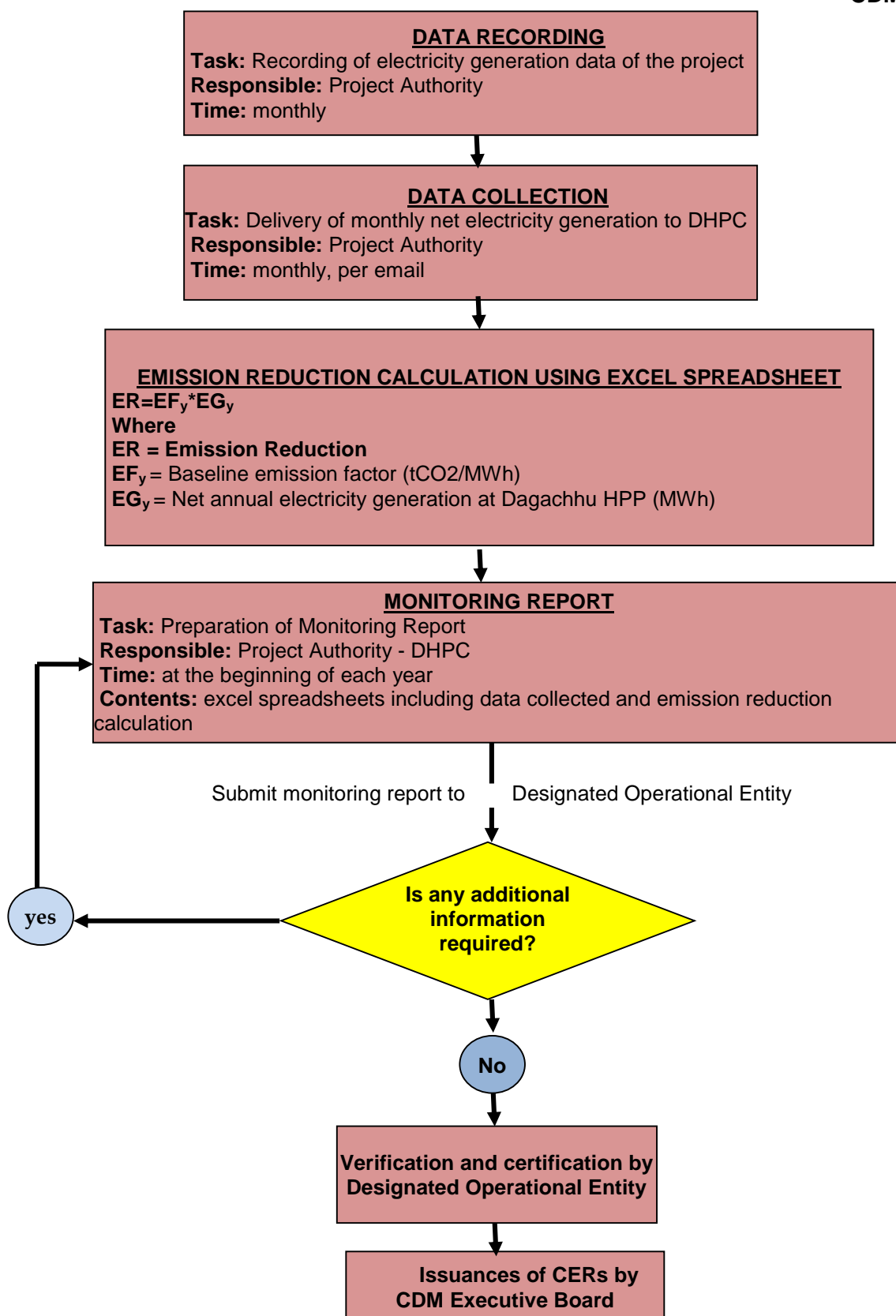
>> No change in the project design from registered project activity.

B.2.7. Changes specific to afforestation or reforestation project activity

NA

SECTION C. Description of monitoring system

>> Dagachhu Hydro Power Corporation Limited (DHPC) has established the precise and well-defined monitoring procedure for the Project and ensured the accurate calculation of emission reductions. The Project employs latest state-of-the-art monitoring and control equipment, which also measure net electricity generated (i.e. power supplied to the grid). The monitoring procedures used in this project to enable the correct calculation of generated emission reductions are as shown below:



Description of monitoring system

The approved monitoring methodology ACM0002 (Version 07) is used for developing the monitoring plan. Monitoring tasks have been implemented according to the monitoring plan in order to ensure that the real, measurable and long-term greenhouse gas (GHG) emission reductions for the proposed project is monitored and reported.

Monitoring data and parameters

The main monitoring parameters include net annual electricity generated by the Project and supplied to the grid (EG_y); installed capacity of the Project (Cap_P); surface area of the reservoir at full water level (A_{PJ}); CO_2 combined emission factor of the regional power grid ($EF_{grid,CM,y}$); CO_2 operating margin emission factor of the grid ($EF_{grid,OMy}$); CO_2 build margin emission factor of the grid ($EF_{grid,BMy}$); and CO_2 emission coefficient of each fuel type ($COEF_i$). As stated in the registered PDD, the ex-post option has been used for the calculation of baseline emission factor (EF_y).

Monitoring Organization

The monitoring of the emission reductions achieved by the Project during the monitoring period has been carried out as per the organizational structure presented below in Figure 4. The Chief Executive Officer of the plant is responsible for the overall monitoring process, but as indicated in the organization chart shown below, the process is delegated to the Monitoring Officer.

The Electricity generated and supplied to the grid on daily basis are recorded by the team of O&M Division. Later the recorded data are submitted to the Monitoring Officer. The Monitoring Officer is responsible for verification of the measurement, recording, collection of sales receipts and the calculation of the emission reductions for verification purpose. The Monitoring Officer prepares the monitoring report which is then reviewed by the Chief Executive Officer.

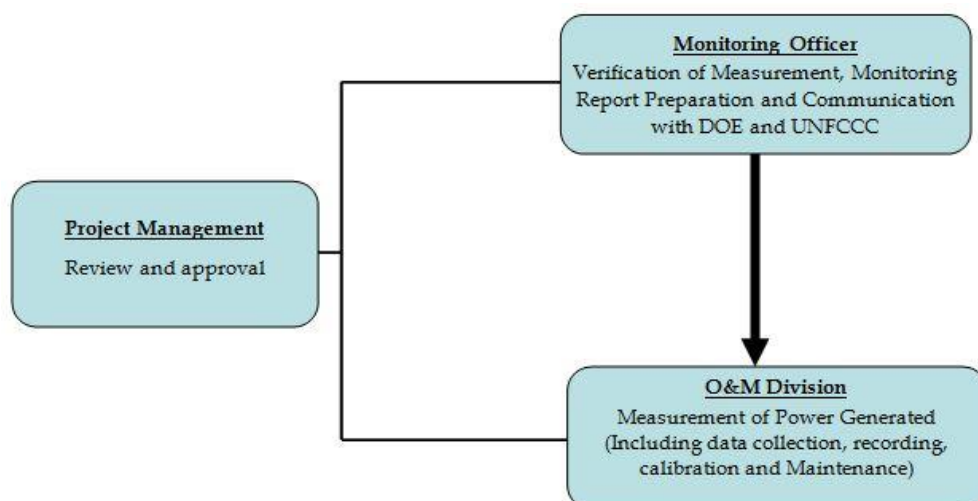


Figure 4: Organizational Structure – Monitoring of the Project

Monitoring Equipment and Program

The electricity generated by the Project and supplied to the grid is being monitored using the energy meters (main meter and check meter) installed at the DHPC powerhouse. DHPC submits a day-ahead schedule for the electricity that is expected to be generated and supplied to Indian grid, to National Load Dispatch Centre (NLDC) of Bhutan and NLDC later submits the schedule to Eastern Region Load Dispatch Centre (ERLDC) of India. The readings from the energy meters installed at DHPC powerhouse are submitted to ERLDC on weekly basis. ERLDC compares the scheduled energy and the actual energy supplied by Dagachhu HPP to the grid. Any difference in the actual and the scheduled energy is being treated as Deviation. The check meter is used as back up for the main meter. The reading of the main meter is cross checked with the check meter installed on the same core of CTs & VTs.

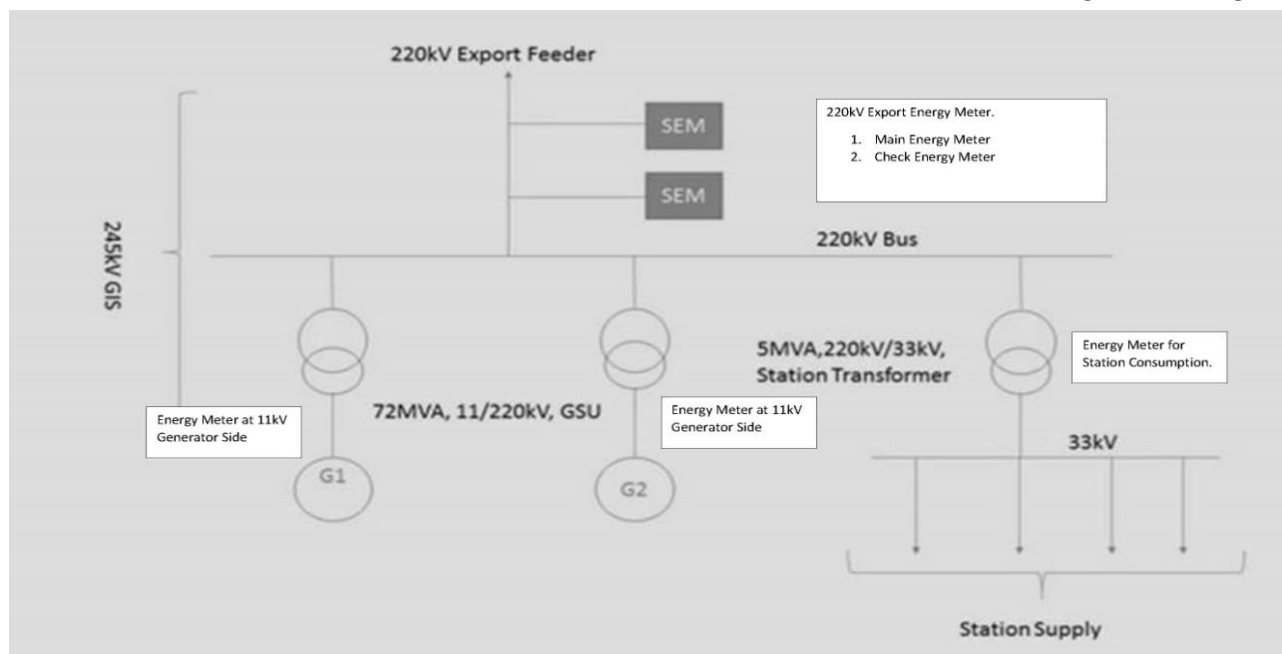


Figure 5: Monitoring Location

The electricity generated from two generator units (Unit I and Unit 2) at 11 kV is step up to 220kV and connected to a 220kV bus bar. The generated electricity is then exported to India using the regional grid of Bhutan which feeds the electricity into Indian grid at India-Bhutan border. The main meter and check meter are installed on the 220kV export feeder at DHPC powerhouse and being measured for the net electricity generated by the Project and supplied to the grid.

The electricity generated from Dagachhu HPP is being exported to India on day-ahead schedule basis. However, the actual electricity exported to India is measured using the export meter (i.e. main meter) installed at 220kV Ex-bus bar (outgoing 220kV export feeder) at DHPP powerhouse on weekly basis and submitted to ERLDC of India. The energy measured through the export meter is net of the auxiliary consumptions.

Calibration

Both the energy meters are calibrated in accordance with the national standards to ensure its accuracy and are meeting the requirements of these standards. The calibration of energy meters before commissioning of the Project was conducted by Center of Excellency for Control and Protection (CoECaP), Druk Green Power Corporation Limited in presence of DHPC, Bhutan Power Corporation (BPC) and Tata Power Trading Company Limited (TPTCL).

The details of the Main Meter and the Check Meter are as follows:

Table: Parameter of Meters

| | Main Meter | Check Meter |
|--------------------------------------|--|--|
| Type | ER300P | ER300P |
| Make | L&T | L&T |
| Accuracy class | 0.2S | 0.2S |
| Serial No. | NP-8703A | NP-8702A |
| Configuration | 3 Phase-4 wire | 3 Phase -4 wire |
| Initial Calibration Date | 29/09/2014 | 29/09/2014 |
| Subsequent Calibration/testing dates | 24/09/2015 17/03/2017 26/04/2018 | 24/09/2015 17/03/2017 26/04/2018 |

As per the Grid Code the main export energy meter and the check energy meter are to be tested and calibrated annually as per prevailing standards in the country, However the Bhutan Electricity Authority has issued notification stating that the frequency for testing and calibration shall be five years. However, these energy meters have to be tested whenever is show abnormal and inconsistent readings. In case main meter shows discrepancies beyond the permissible limits, the readings of the check energy meter will be used for accounting. If both the energy meters are faulty, the energy can be calculated using energy recorded at the receiving end through Joint Energy Meter Reading of same date and time and by adding network losses to it. The network losses can be obtained from Bhutan Power System Operator.

SECTION D. Data and parameters

D.1. Data and parameters fixed ex ante

| | |
|--|---|
| Data/Parameter | There is no ex ante parameter as per the registered PDD and hence this table is left blank. |
| Unit | NA |
| Description | NA |
| Source of data | NA |
| Value(s) applied | NA |
| Choice of data or measurement methods and procedures | NA |
| Purpose of data/parameter | NA |
| Additional comments | NA |

D.2. Data and parameters monitored

| | |
|---------------------------------|--|
| Data/Parameter | EG _y |
| Unit | MWh |
| Description | Net annual electricity generated at Dagachhu HPP and supplied to the grid |
| Measured/calculated/default | <ul style="list-style-type: none"> The electricity supplied to grid is measured using the export meter (i.e. main meter) installed at DHPC powerhouse and the transmission loss till India-Bhutan Border is been net off. |
| Source of data | <ul style="list-style-type: none"> Joint Energy Meter Reading (JEMR) |
| Value(s) of monitored parameter | 01/01/2019-31/12/2019= 387,654.79. |

| | | |
|---------------------------------------|--|-----------------|
| Monitoring equipment | Energy meters with an accuracy level of 0.2s are installed on the outgoing feeder of 220kV line. Information on the meters is listed below | |
| | Main Meter | |
| | Type | ER300P |
| | Make | L&T |
| | Accuracy class | 0.2S |
| | Serial No. | NP-8703A |
| | Configuration | 3 Phase -4 wire |
| | Check Meter | |
| | Type | ER300P |
| | Make | L&T |
| Measuring/reading/recording frequency | <ul style="list-style-type: none"> The electricity is monitored continuously and recorded every 15 minutes and reported on monthly basis in form of JEMR taken by DHPC, BPC (Transmission Utility and Druk Green). The export meter is bidirectional meter and monitors import and Export energy and automatically deducts the import from export and display the net electricity. | |
| | | |
| Calculation method (if applicable) | The net electricity is calculated using the 220kv ex-bus bar meter reading taking into account the transmission loss till India-Bhutan border. 2% transmission loss is considered as per the Connection Agreement signed with BPC and Power Purchase Agreement signed with TPTCL | |
| QA/QC procedures | The electricity generated and supplied to grid is cross-checked by main meter and check meter and by the monthly invoice of TPTCL. | |
| Purpose of data/parameter | Calculation of baseline emissions. | |
| Additional comments | The data is archived both in electronic and hard paper format for crediting period + 2 years. | |

| | |
|--|--|
| Data / Parameter: | Cap _{PJ} |
| Unit: | MW |
| Description: | Installed capacity of the hydro power plant after the implementation of the project activity |
| Measured/ Calculated / Default: | Measured |
| Source of data: | The nameplate of the power units |
| Value(s) of monitored parameter: | 63 X 2 MW |
| Monitoring equipment: | Determined in accordance with the nameplates on the generator equipment supplied by the manufacturer |
| Measuring/ Reading/ Recording frequency: | Yearly |
| Calculation method (if applicable): | NA |
| QA/QC procedures: | NA |
| Purpose of data: | For baseline emission reduction calculation |
| Additional comment: | Nil |

| | |
|--|---|
| Data / Parameter: | A _{PJ} |
| Unit: | m ² |
| Description: | Area of the reservoir measured in the surface of the water, after the implementation of the project activity, when the reservoir is full. |
| Measured/ Calculated / Default: | Measured |
| Source of data: | Survey Report submitted by Lot-I Civil Contractors |
| Value(s) of monitored parameter: | 30,967m ² |
| Monitoring equipment: | Survey Equipment |
| Measuring/ Reading/ Recording frequency: | Yearly |
| Calculation method (if applicable): | Calculated by multiplying the length and width of the reservoir |
| QA/QC procedures: | NA |
| Purpose of data: | For the calculation of the project emission if applicable. |
| Additional comment: | The Power Density greater than 10 W/m ² therefore project emission is not applicable. |

| | |
|--|--|
| Data / Parameter: | EF _{grid,OMy} |
| Unit: | tCO ₂ /MWh |
| Description: | CO ₂ operating margin emission factor of the regional power grid |
| Measured/ Calculated / Default: | Calculated |
| Source of data: | The data is taken from the Database Version 14 (Dec 2018) of Central Electricity Authority of India and Bhutan Power data book 2018 |
| Value(s) of monitored parameter: | 0.9599 |
| Monitoring equipment: | NA |
| Measuring/ Reading/ Recording frequency: | Yearly |
| Calculation method (if applicable): | Simple OM method has been applied following the methodological tool: Tool to calculate the emission factor for an electricity system. Please refer ER sheet for detail calculation |
| QA/QC procedures: | NA |
| Purpose of data: | Calculation of Combined Margin |
| Additional comment: | Nil |

| | |
|---------------------------------------|---|
| Data / Parameter: | EF _{grid,BMy} |
| Unit: | tCO ₂ /MWh |
| Description: | CO ₂ operating margin emission factor of the regional power grid |
| Measured/ Calculated / Default: | Calculated |

| | |
|--|---|
| Source of data: | The data is taken from the Database Version 15 (Dec 2019) of Central Electricity Authority of India and Bhutan Power data book 2018 |
| Value(s) of monitored parameter: | 0.9084 |
| Monitoring equipment: | NA |
| Measuring/ Reading/ Recording frequency: | Yearly |
| Calculation method (if applicable): | Built margin for the year 2017-18 is considered in accordance with tool to calculate emission factor, latest CEA database Version 14 was used. Please refer ER sheet for detail calculation |
| QA/QC procedures: | NA |
| Purpose of data: | Calculation of Combined Margin |
| Additional comment: | Nil |

| | |
|--|--|
| Data / Parameter: | COEF _i |
| Unit: | tCO ₂ /mass or volume unit |
| Description: | CO ₂ emission coefficient of each fuel type i |
| Measured/ Calculated / Default: | Ex-post Monitoring of CEA database |
| Source of data: | CEA database |
| Value(s) of monitored parameter: | Refer ER sheet for Indian grid (Tab Assumption). In Bhutan all the power Plant are Hydro. |
| Monitoring equipment: | NA |
| Measuring/ Reading/ Recording frequency: | Yearly |
| Calculation method (if applicable): | Following the methodological tool: Tool to calculate the emission factor for an electricity system. Please refer ER sheet for detail calculation |
| QA/QC procedures: | NA |
| Purpose of data: | Calculation of baseline emissions |
| Additional comment: | Nil |

D.3. Implementation of sampling plan

>> Not applicable

SECTION E. Calculation of emission reductions or net anthropogenic removals

E.1. Calculation of baseline emissions or baseline net removals

>> The Baseline emission BE_y is calculated as follows:

$$ER_y = BE_y - PE_y - L_y$$

ER_y = BE_y since PE_y=0, and L_y=0 (in accordance with ACM0002, Version 07)

$$BE_y = EG_y * EF_y$$

$$EF_y = EF_{grid,CM,y} * W_{OM} + EF_{BM,y} * W_{BM}$$

W_{OM}=W_{BM}=0.5 as per ACM0002

| | |
|---------------------------|--|
| ER _y | - Emission reduction for the year y |
| BE _y | - Baseline emission factor for the year y |
| EF _y | - Emission factor of the grid (tCO ₂ e/MWh) |
| EG _y | - Net electricity generated and supplied to the grid during the year y |
| L _y | - Leakage emission |
| PE _y | - Project Emission |
| EF _{grid, CM, y} | - CO ₂ Combined emission factor of the regional power grid |
| EF _{OM, y} | - CO ₂ Operating margin emission factor of the grid |
| EF _{BM, y} | - CO ₂ Build margin emission factor of the grid |

EG_y for the period from 01/01/2019 – 31/12/2019 = 387,654.79 MWh

EF_y for the year 2019 as per the CEA database version 15 (Dec 2019) and Bhutan Power data book 2018.

ER_y = 387,654.79 * 0.9342 = 362,130 tCO₂e

| Parameter | Values |
|--|----------------------------|
| EF _{BM, y} | 0.9084 |
| EF _{OM, y} | 0.9599 |
| EF _y or EF _{grid, CM, y} | 0.9342 |
| EG _y | 387,654.79 MWh |
| ER _y | 362,130 tCO ₂ e |

E.2. Calculation of project emissions or actual net removals

>> The "Power Density" (W/m²) of the project is 4,068 W/m² (126,000,000 W / 30,967 m²) which is by far above the threshold of 10 W/m². Therefore, project emissions from the reservoir may be neglected therefore;

PE_y = 0, as per ACM0002 (Version 07)

During the shutdown of the plant, for auxiliary consumption, the Power from the Bhutan grid is used as backup. The DG set is used only in case of shutdown of plant and failure of the Bhutan grid. The total emission from the DG is less than 1% (7 tCO₂e) of the total generation which is within the allowable limit of para 74 of CDM validation and verification standard for project activities, version 01.0, therefore it is not accounted in the ER calculation. The demonstration of diesel consumption in DG and corresponding project emission is submitted in separate spreadsheet to DOE.

E.3. Calculation of leakage emissions

>> No leakage as per ACM0002 (Version 7)

E.4. Calculation of emission reductions or net anthropogenic removals

| | Baseline GHG emissions or baseline net GHG removals (t CO ₂ e) | Project GHG emissions or actual net GHG removals (t CO ₂ e) | Leakage GHG emissions (t CO ₂ e) | GHG emission reductions or net anthropogenic GHG removals (t CO ₂ e) | | |
|--------------|---|--|---|---|-----------------|--------------|
| | | | | Before 01/01/2013 | From 01/01/2013 | Total amount |
| Total | 362,130 | 0 | 0 | 0 | 362,130 | 362,130 |

E.5. Comparison of emission reductions or net anthropogenic removals achieved with estimates in the registered PDD

| Amount achieved during this monitoring period (t CO ₂ e) | Amount estimated ex ante (t CO ₂ e) |
|--|---|
| 362,130 | 511,872 |

E.5.1. Explanation of calculation of “amount estimated ex ante for this monitoring period in the PDD”

>> NA

E.6. Remarks on increase in achieved emission reductions

>>NA

E.7. Remarks on scale of small-scale project activity

>>NA

Document information

| <i>Version</i> | <i>Date</i> | <i>Description</i> |
|----------------|-----------------|---|
| 07.0 | 31 May 2019 | Revision to: <ul style="list-style-type: none"> • Ensure consistency with version 02.0 of the “CDM project standard for project activities” (CDM-EB93-A04-STAN); • Add a section on remarks on the observance of the scale limit of small-scale project activity during the crediting period; • Add "changes specific to afforestation or reforestation project activity" as a possible post-registration changes; • Clarify the reporting of net anthropogenic GHG removals for A/R project activities between two commitment periods; • Make editorial improvements. |
| 06.0 | 7 June 2017 | Revision to: <ul style="list-style-type: none"> • Ensure consistency with version 01.0 of the “CDM project standard for project activities” (CDM-EB93-A04-STAN); • Make editorial improvements. |
| 05.1 | 4 May 2015 | Editorial revision to correct version numbering. |
| 05.0 | 1 April 2015 | Revisions to: <ul style="list-style-type: none"> • Include provisions related to delayed submission of a monitoring plan; • Provisions related to the Host Party; • Remove reference to programme of activities; • Overall editorial improvement. |
| 04.0 | 25 June 2014 | Revisions to: <ul style="list-style-type: none"> • Include the Attachment: Instructions for filling out the monitoring report form (these instructions supersede the "Guideline: Completing the monitoring report form" (Version 04.0)); • Include provisions related to standardized baselines; • Add contact information on a responsible person(s)/ entity(ies) for completing the CDM-MR-FORM in A.6 and Appendix 1; • Change the reference number from <i>F-CDM-MR</i> to <i>CDM-MR-FORM</i>; • Editorial improvement. |
| 03.2 | 5 November 2013 | Editorial revision to correct table in page 1. |
| 03.1 | 2 January 2013 | Editorial revision to correct table in section E.5. |

| <i>Version</i> | <i>Date</i> | <i>Description</i> |
|---|-----------------|---|
| 03.0 | 3 December 2012 | Revision required to introduce a provision on reporting actual emission reductions or net GHG removals by sinks for the period up to 31 December 2012 and the period from 1 January 2013 onwards (EB 70, Annex 11). |
| 02.0 | 13 March 2012 | Revision required to ensure consistency with the "Guidelines for completing the monitoring report form" (EB 66, Annex 20). |
| 01.0 | 28 May 2010 | EB 54, Annex 34. Initial adoption. |
| Decision Class: Regulatory Document Type: Form Business Function: Issuance Keywords: monitoring report | | |