



Monitoring report form
(Version 05.1)

MONITORING REPORT

Title of the project activity	Bundled wind energy power projects (2003 policy) in Rajasthan	
UNFCCC reference number of the project activity	1167	
Version number of the monitoring report	01	
Completion date of the monitoring report	20/10/2015	
Monitoring period number and duration of this monitoring period	Monitoring Period number: 4 th 01/04/2014 to 31/08/2015	
Project participant(s)	Wind World (India) Limited	
Host Party	India	
Sectoral scope(s)	Sectoral Scope: 1, Energy industries (renewable / non-renewable sources)	
Selected methodology(ies)	ACM0002 / Version 06 Title: Approved baseline and monitoring methodology title "Consolidated methodology for grid-connected electricity generation from renewable sources"	
Selected standardized baseline(s)	NA	
Estimated amount of GHG emission reductions or net GHG removals by sinks for this monitoring period in the registered PDD	71,128 tonnes of CO ₂ e	
Total amount of GHG emission reductions or net GHG removals by sinks achieved in this monitoring period	GHG emission reductions or net GHG removals by sinks reported up to 31 December 2012	GHG emission reductions or net GHG removals by sinks reported from 1 January 2013 onwards
	NA	43,943 tonnes of CO ₂ e

SECTION A. Description of project activity

A.1. Purpose and general description of project activity

>>

Purpose of the project activity and the measures taken to reduce greenhouse gas emissions:

Bundled wind energy power projects of 29.76 MW ("Project") is installed in the state of Rajasthan and provides reliable, renewable power to the Rajasthan state electricity grid. The Project leads to reduction of greenhouse gas emissions because it displaces electricity from fossil fuel based electricity generation plants. The Project harnesses renewable resources in the region, and thereby displacing non-renewable natural resources thereby ultimately leading to sustainable economic and environmental development. Wind World (India) Ltd¹ is the equipment supplier and the operations and maintenance contractor for the Project. The generated electricity is supplied to the utility (Discom) under a long-term power purchase agreement (PPA). The details of the subprojects comprising the Project are as under:

Name of the Customer	M/C Model	Capacity of M/C	No. of M/C	Capacity (MW)
Wind World Wind Farms (Rajasthan) Pvt. Ltd. ²	E-48	0.8	30	24
Modular Power	E-30	0.23	1	0.23
Vijay Traders	E-30	0.23	1	0.23
Vijay Developers	E-30	0.23	1	0.23
Vikas Agencies	E-30	0.23	1	0.23
G. C. Chemie Pharmie Ltd.	E-30	0.23	1	0.23
Cooper Metals Pvt. Ltd.	E-30	0.23	2	0.46
Kataria Infrastructure Corporation	E-40	0.6	1	0.6
D.P.Power	E-30	0.23	1	0.23
Kataria Infrastructure Corporation	E-30	0.23	1	0.23
Kataria Wires	E-30	0.23	1	0.23
Ratlam Wires	E-30	0.23	1	0.23
Kwality Tobacco Products	E-30	0.23	1	0.23
D P Power	E-40	0.6	1	0.6
Unique Power Corporation	E-40	0.6	1	0.6
P.V.Chandran	E-40	0.6	1	0.6
Srinivaas Sirigeri	E-40	0.6	1	0.6
Total Capacity (MW)			47.00	29.76

Brief description of the installed technology and equipments:

The Project involves 30 wind energy converters (WECs) of Wind World make 800 kW E-48, 5 WECs of Wind World make 600 kW E-40 and 12 WECs of Wind World make 230 kW E-30 with internal electrical lines connecting the Project with local evacuation facility. The WECs generates 3-phase power at 400V, which is stepped up to 33 KV. The Project can operate in the frequency range of 47.5–51.5 Hz and in the voltage range of 400 V ± 12.5%. The other salient features of the state-of-art-technology are:

- ✓ Gearless Construction - Rotor & Generator Mounted on same shaft eliminating the Gearbox.
- ✓ Variable speed function – has the speed range of 18 to 33 RPM thereby ensuring optimum efficiency at all times.
- ✓ Variable Pitch functions ensuring maximum energy capture.

¹ With effect from 01/01/2013 name of Enercon (India) Limited has been changed to 'Wind World (India) Limited'

² Erstwhile known as "Enercon Wind Farm (Rajasthan) Pvt. Ltd.", hereinafter the new name "Wind World Wind Farms (Rajasthan) Pvt. Ltd." is being used throughout the report.

- ✓ Near Unity Power Factor at all times.
- ✓ Minimum drawal (less than 1% of kWh generated) of Reactive Power from the grid.
- ✓ No voltage peaks at any time.
- ✓ Operating range of the WEC with voltage fluctuation of -20 to +20%.
- ✓ Less Wear & Tear since the system eliminates mechanical brake, which are not needed due to low speed generator which runs at maximum speed of 33 rpm and uses Air Brakes.
- ✓ Three Independent Braking System.
- ✓ Generator achieving rated output at only 33 rpm.
- ✓ Incorporates lightning protection system, which includes blades.
- ✓ Starts Generation of power at wind speed of 3 m/s.

Wind World (India) Ltd has secured and facilitated the technology transfer for wind based renewable energy generation from Enercon GmbH, has established a manufacturing plant at Daman in India, where along with other components the "Synchronous Generators" using "Vacuum Impregnation" technology are manufactured.



Revolutionary Gearless Technology

- | | |
|---------------------|-----------------|
| 1. Generator | 6. Blade Flange |
| 2. Generator Stator | 7. Pitch Drive |
| 3. Generator Rotor | 8. Main Carrier |
| 4. Main Pin | 9. Wind Sensor |
| 5. Rotor Blade | 10. Tower |

Technology Diagram

Relevant dates for the project activity:

The date of placement of purchase order for the first project in the bundle is 30th April, 2003. The first machine under the project activity was commissioned on 29/07/2003 and the last machine under the project activity was commissioned on 29/05/2005. The expected operational lifetime of the project is for 20 years. The crediting period of the project activity has commenced on 17/05/2011. This is the 4th monitoring report. The details of issuance of CERs for the previous monitoring periods are as follows:

Issuance no.	Period covered	CER issued	
First Issuance	17/05/2011 – 31/10/2011 (Inclusive of both days)	17809	CP1
Second Issuance	1/11/2011 to 30/09/2012 (Inclusive of both days)	35260	CP1
Third Issuance	1/10/2012 to 31/03/2014 (Inclusive of both days)	42388	(3718 from CP1)

Total emission reductions achieved in this monitoring period

This is the third monitoring report for the project activity. The total emission reductions achieved under the monitoring period 01/04/2014 to 31/08/2015 (Inclusive of both days) is 43,943 tCO₂e.

A.2. Location of project activity

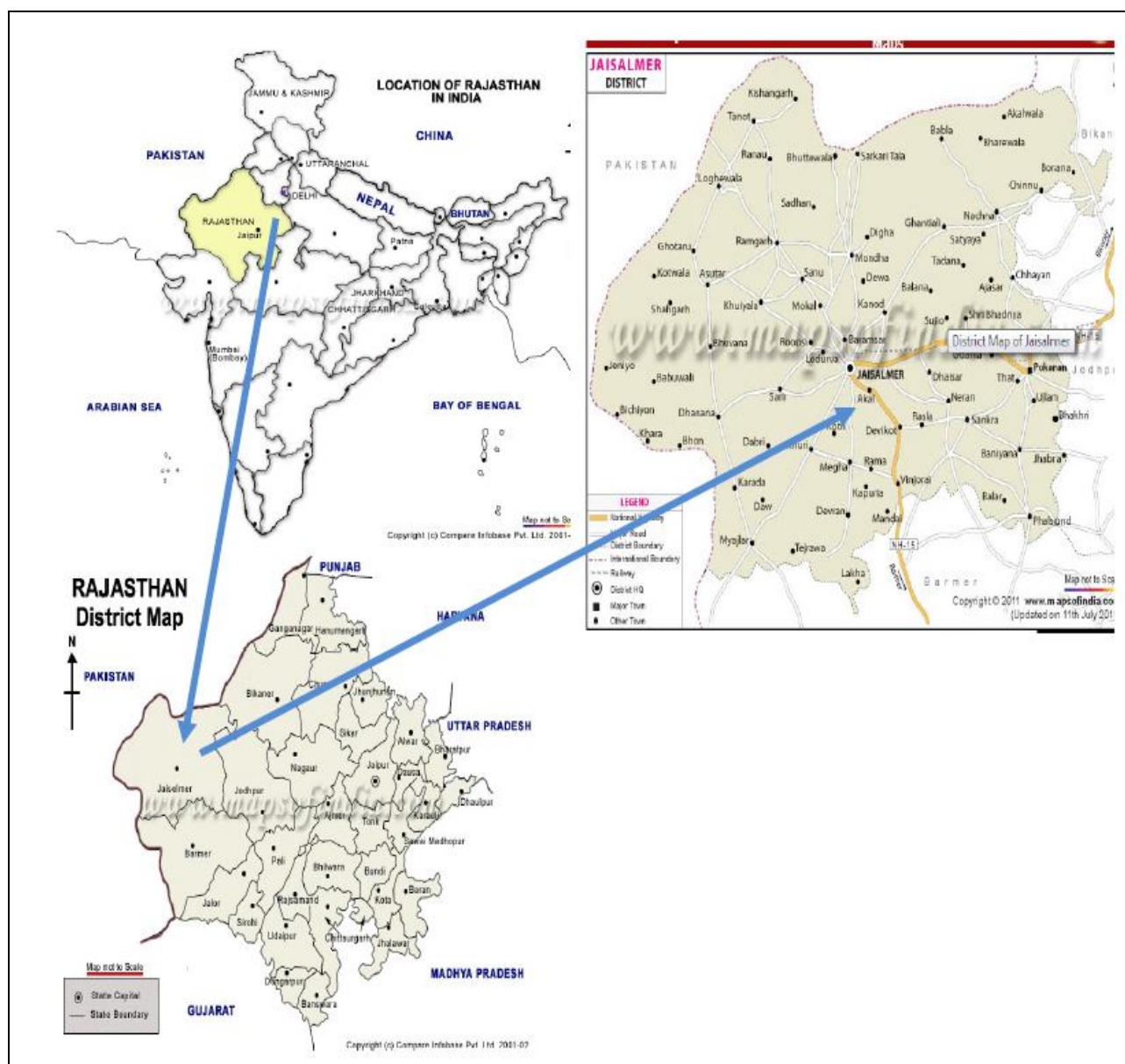
>>

(a) Host Party(ies) : India

(b) Region/State/Province, etc. : Rajasthan State

(c) City/Town/Community, etc. : Kita. Bhu, Sodabhandhan and Temdarai villages in Jaisalmer district of Rajasthan of India.

- (d) Physical/ Geographical location : The detailed individual WECs location numbers and coordinates of project activity are provided in Appendix 2. A location map is provided below:



A.3. Parties and project participant(s)

Party involved (host) indicates a host Party)	Private and/or public entity(ies) project participants (as applicable)	Indicate whether the Party involved wishes to be considered as project participant (yes/no)
Government of India (host)	Wind World (India) Limited (Private Entity)	NO

A.4. Reference of applied methodology and standardized baseline

>>

The approved consolidated baseline and monitoring methodology ACM0002, Version 6.0 (19 May, 2006) has been used. The title of the baseline and monitoring methodologies are "Consolidated methodology for grid – connected electricity generation from renewable sources".

The tool used for the project is as follows:

"Tool for the demonstration and assessment of additionality" version 3.0

References:

<http://cdm.unfccc.int/methodologies/DB/UB3431UT9I5KN2MUL2FGZXZ6CV71LT/view.html>

<http://cdm.unfccc.int/methodologies/PAmethodologies/tools/am-tool-01-v3.pdf>

A.5. Crediting period of project activity

>>

The length of the Crediting period of the project activity as per registered PDD is 10 years (Fixed).

The crediting period start date : 17/05/2011

The end date of crediting period : 16/05/2021

Both first and last days are included.

A.6. Contact information of responsible persons/entities

>>

Wind World (India) Limited

A-9, Veera Industrial Estate, Veera Desai Road, Andheri West

Mumbai, Maharashtra 400 053 (India)

The detailed contact information has been provided in Appendix 1. The above mentioned person/entity is also a project participant.

SECTION B. Implementation of project activity**B.1. Description of implemented registered project activity**

>>

The start date of the project activity is 30/04/2003, which is the date of placement of purchase order for the first project in the bundle. The first machine under the project activity was commissioned on 29/07/2003 and last machine under the project activity was commissioned on 29/05/2005. The commissioning dates for all the machines included in the project activity are given in the table below:

S. No.	Name of the Customers	Unique identification no.	Type of M/C	No. of M/C	Capacity (MW)	Date of Commissioning
1	Wind World Wind Farms (Rajasthan) Pvt. Ltd.	EW RPL 01	0.80	30	24	29/05/2005
		EW RPL 02				
		EW RPL 03				
		EW RPL 04				
		EW RPL 05				
		EW RPL 06				
		EW RPL 07				
		EW RPL 08				
		EW RPL 09				
		EW RPL 10				
		EW RPL 11				
		EW RPL 12				
		EW RPL 13				
		EW RPL 14				
		EW RPL 15				
		EW RPL 16				
		EW RPL 17				
		EW RPL 18				
		EW RPL 19				
		EW RPL 20				
		EW RPL 21				
		EW RPL 22				
		EW RPL 23				
		EW RPL 24				
		EW RPL 25				
		EW RPL 26				
		EW RPL 27				
		EW RPL 28				
		EW RPL 29				
		EW RPL 30				
2	Modular Power	MPPL - 01	0.23	1	0.23	29/03/2004
3	Vijay Traders	VT - 01	0.23	1	0.23	29/03/2004
4	Vijay Developers	VD - 01	0.23	1	0.23	29/03/2004
5	Vikas Agencies	VA - 01	0.23	1	0.23	29/03/2004
6	G. C. Chemie Pharmie Ltd.	GCCPL - 01	0.23	1	0.23	29/03/2004
7	Cooper Metals Pvt. Ltd.	CMPL – 01	0.23	2	0.46	29/03/2004 & 12/06/2004
8	Kataria Infrastructure Corporation	KIC – 01	0.60	1	0.60	29/07/2003
9	D.P.Power	DPP - 01	0.23	1	0.23	29/07/2003
10	Kataria Infrastructure Corporation	KIC – 02	0.23	1	0.23	29/07/2003
11	Kataria Wires	KWPL - 02	0.23	1	0.23	29/07/2003
12	Ratlam Wires	RWPL - 02	0.23	1	0.23	29/07/2003
13	Kwality Tobacco Products	KTP - 01	0.23	1	0.23	29/07/2003
14	D P Power	DPP - 02	0.60	1	0.60	30/06/2004
15	Unique Power Corporation	UPC - 01	0.60	1	0.60	30/06/2004

16	P.V.Chandran	PVC – 01	0.60	1	0.60	30/11/2003
17	Srinivaas Sirigeri	SS – 01	0.60	1	0.60	03/03/2004

There are no changes that have happened in project activity which may impact the applicability of the methodology. The operation and maintenance activities of Wind World are ISO certified and all the events are recorded in the log book available at the project site. Referring to the data available it can be inferred that there have not been any major special events of breakdown for any of the machines that are included in the project activity. As a part of regular maintenance the machines are stopped for mechanical and electrical maintenance for 16 to 18 hours annually and for visual inspection for 6 to 7 hours quarterly. During the monitoring period there were no events or situation occurred, which may impact the applicability of the methodology.

B.2. Post-registration changes

B.2.1. Temporary deviations from registered monitoring plan, applied methodology or applied standardized baseline

>>

There is no deviation from registered monitoring plan or applied methodology during this monitoring period.

B.2.2. Corrections

>>

There are no corrections from the registered PDD during this monitoring period.

B.2.3. Changes to start date of crediting period

>>

There is no change to start date of crediting period.

B.2.4. Inclusion of a monitoring plan to the registered PDD that was not included at registration

>>

Not applicable.

B.2.5. Permanent changes from registered monitoring plan, applied methodology or applied standardized baseline

>>

The monitoring plan has been revised. The revision in monitoring plan was done to bring more clarity on the monitoring plan according to the real scenario. The other parameters as monitored along with EGy (as referred in the registered monitoring plan) have also been described in details along with the apportionment procedure followed for the project activity. The details of the apportionment procedure have been described in the section C & D. Revised PDD version 8.0; dated 25/01/2012 was approved by UNFCCC on 02/11/2012. (Link: <https://cdm.unfccc.int/Projects/DB/SGS-UKL1181738388.43/view>).

B.2.6. Changes to project design of registered project activity

>>

The original capacity of the project was 30.59 MW at the time of project commissioning. Afterwards, from this bundle, the sub-project comprising of one WEC of 0.6 MW by Dempo Industries Pvt. Ltd. has been decommissioned and the ownership of the sub – project comprising of one WEC of 0.23 MW by Prerna Pharma Intermediates Pvt. Ltd. has been changed to Jitendra K. Newaskar. Dempo Industries Pvt. Ltd. decided to decommission this sub – project (one WEC) due to shortfall in generation of power during the project operational period. The change in ownership of this sub – project (one WEC) from M/s. Prerna Pharma Intermediates Pvt. Ltd. To M/s. Jitendra K. Newaskar was a normal business decision. These changes in project design of registered project activity were approved by UNFCCC on 02/11/2012 (Link: <http://cdm.unfccc.int/Projects/DB/SGS-UKL1181738388.43/view>).

B.2.7. Types of changes specific to afforestation or reforestation project activity

>>

Not applicable to the project activity.

SECTION C. Description of monitoring system

>>

Approved monitoring methodology ACM0002/ Version 06, Sectoral Scope: 1, "Consolidated methodology for grid-connected electricity generation from renewable sources", by CDM – Meth Panel is proposed to be used to monitor the emission reductions.

This approved monitoring methodology requires monitoring of the following:

- ✓ Electricity generation from the project activity; and
- ✓ Operating margin emission factor and build margin emission factor of the grid, where ex-post determination of grid emission factor has been chosen

Since the baseline methodology is based on ex-ante determination of the baseline, the monitoring of operating margin emission factor and build margin emission factor is not required.

In order to determine the net electricity supplied to the grid by the project, the following procedure is followed:

All the WECs of the Project along with the other wind firms are connected to the backup/check meter at Temderai sub-station, which is further connected to the Sub-station at Amarsagar at 220 kV. The generation readings of all WECs of all the customers are collectively displayed at this Main Billing meter at 220 kV Amarsagar substation. Therefore, the main meter reading reflects the aggregate electricity supplied by all these wind farms, including the project activity. Representatives of Discom and Wind World will jointly take the main meter reading at Amarsagar and sign the meter reading on the first day of every month. Simultaneously, the joint meter reading of the backup metering system at Temderai substation will also be taken by representatives of the Discom and Wind World.

To calculate the net amount of electricity generation from each wind turbine, apportionment of this collective meter reading of the main billing meter (recorded at Main meter 1 & Main meter 2) is done on the basis of the controller panel reading at the individual wind turbine end. This controller panel reading is recorded and maintained by Wind World.

The apportionment procedure has been explained as follows:

EGJMR, Export	= Electricity exported, as recorded by the main meter at the substation
EGJMR, Import	= Electricity imported, as recorded by the main meter at the substation
EG Controller, Export	= Electricity exported by a WEC, as measured at the controller
ΣEG Controller, Export	= Electricity exported by all the WECs connected to the main meter at the substation, measured at the controller of each WEC
EGWEC, Export	= Electricity exported by a WEC to the grid, calculated
EGWEC, Import	= Electricity imported by a WEC from the grid, calculated

Electricity exported by each WEC is apportioned on the basis of electricity export recorded at the controller of each WEC and the electricity export at the main meter as mentioned in the JMR. The export multiplication factor is calculated as follows:

$$\text{Export Multiplication factor} = \frac{\text{EG}_{\text{JMR, Export}}}{\sum \text{EG}_{\text{Controller, Export}}} \dots\dots\dots(1)$$

Therefore, the energy exported by a WEC to the grid is calculated as:

$$\text{EG}_{\text{WEC, Export}} = \text{Export Multiplication factor} \times \text{EG}_{\text{Controller, Export}} \dots\dots\dots(2)$$

As the controller meter doesn't record import, the apportioning of energy import by each WEC is also done on the basis of electricity exported recorded at the controller of each WEC and the electricity import at the main meter as mentioned in the JMR. The import multiplication factor is calculated as follows:

$$\text{Import Multiplication factor} = \frac{EG_{\text{JMR, Import}}}{\sum EG_{\text{Controller, Export}}} \dots\dots\dots(3)$$

Therefore, the energy imported by a WEC to the grid is calculated as:

$$EG_{\text{WEC, Import}} = \text{Import Multiplication factor} \times EG_{\text{Controller, Export}} \dots\dots\dots(4)$$

Hence, the net electricity exported by a WEC of the project is calculated as:

$$EG_{\text{WEC, Export}} - EG_{\text{WEC, Import}}$$

The net electricity exported by all the WECs of the project activity is calculated as:

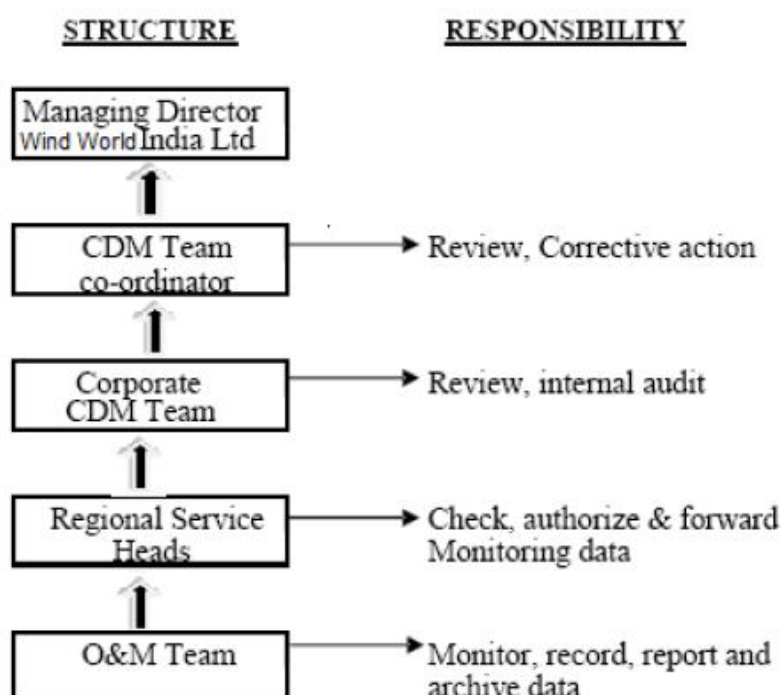
$$\begin{aligned} E_{\text{Gy}} &= \sum EG_{\text{WEC, Export}} - \sum EG_{\text{WEC, Import}} \\ &= EG_{\text{Export}} - EG_{\text{Import}} \end{aligned}$$

Where,

$\sum EG_{\text{WEC, Export}}$ = Export from all the WECs under the project activity
 $\sum EG_{\text{WEC, Import}}$ = Import from all the WECs under the project activity

The summation is done considering the WECs which belong to the project activity.

The Project is operated and managed by Wind World (India) Ltd. According to the above mentioned procedure, the monthly credit notes are issued and the invoices are raised to the respective DISCOM and the copies are archived electronically as well as on paper. These documents are used for calculation of the emission reduction and cross checking of data. The operational and management structure implemented by Wind World is as follows:



The details of the metering arrangement have been described below:

Metering:

- ✓ The project along with the other wind farms are connected to grid through common metering point (backup meter) at Temderai substation and further connected to Amarsagar substation (EB main meter), where metering is done for billing purpose. The line diagram of the relevant metering points has been shown below as Appendix 3.

Meter Reading:

- ✓ Representatives of Discom and Wind World India will jointly take the main reading and sign the meter reading on the first day of every month at Temderai and Amarsagar substation.
- ✓ The export, import and net electricity supplied to the grid by individual customer will be sourced from the credit notes and can be cross-checked with the invoices raised to the DISCOM and will be used for calculation of emission reduction.

Metering Equipment:

- ✓ The meters used are Tri-vector of accuracy class 0.2 and the manufacturer is the Secure Meters Ltd. The meters are two-way meters and measure the electricity import and export.

Meter Test Checking:

- ✓ The main and backup/ check meters will jointly inspected/tested once in a year as per the terms of the PPA.
- ✓ The LCS meters (for panel reading) do not require calibration as the energy readings of electricity generated at the LCS meter is cross verified by the energy calculated by inverting system installed in the WECs. In case, there is any mismatch in the energy values recorded by the LCS meter and the energy values calculated by the inverting system, the machine will stop working and generate the error report.

Inspection of Energy Meters:

- ✓ In case the meters are found to operate outside the permissible limits, the meters will be either replaced immediately or calibrated. Whenever a main meter goes defective, the consumption recorded by the backup meter will be referred.
- ✓ The main and the backup metering systems will be sealed in presence of representatives of Wind World India and RRVPNL/Jodhpur Discom.

Calibration Details

The metering equipments were inspected & calibrated by state utility. Meter details for the all the main and backup meters are as follows:-

Details of the meters					2013	2014	2015	
Meter description	Serial No.	Make	Accuracy class	Metering point	Calibration Dates	Calibration Dates	Calibration Dates	Validity
Main meter (Line I)	TNU00946	Secure	0.2	Amarsagar Substation	26-12-2013	Nil	13-02-2015	12-02-2016
Backup meter (Line I)	RJB00052	Secure	0.2	Temdarai Substation	28-12-2013	Nil	14-02-2015	13-02-2016
Main meter (Line II)	TNU00945	Secure	0.2	Amarsagar Substation	26-12-2013	Nil	14-02-2015	13-02-2016
Backup meter (Line II)	ABB00691	Secure	0.2	Temdarai Substation	28-12-2013	Nil	14-02-2015	13-02-2016

Hence, there is delay in calibration for 2 months (i.e. 25-12-2014 to 13-02-2015). Therefore, error factor has been considered in the ER calculations and conservatively applied for the months of Dec 2014, Jan & Feb 2015 to estimate the emission reductions.

The main and the backup meters are calibrated once each year. The LCS meters do not require calibration as the energy readings of electricity generated at the LCS meter is cross verified by the energy calculated by inverting system installed in the WECs. In case there is any mismatch in the energy values recorded by the LCS meter and the energy values calculated by the inverting system; the machine will stop working and generate the error report. Therefore there is no data uncertainty.

Training and maintenance:

In order to ensure that Wind World's staffs who are positioned to take care all the activities starting from project construction to operation and maintenance, Wind World Training Academy provides need based periodical training to meet the requirements of the project. The training is contemporary, which results in imparting focused knowledge leading to value addition to the attitude and skills of all the trainees. The training facility is located at Daman (India) and is fully functional and equipped with qualified trainers, training equipments, classrooms and hostel facilities.

SECTION D. Data and parameters**D.1. Data and parameters fixed ex ante or at renewal of crediting period**

Data/parameter:	$EF_{OM, y}$
Unit	tCO ₂ e/MWh
Description	Operating Margin Emission Factor of Northern Regional Electricity Grid
Source of data	"CO ₂ Baseline Database for Indian Power Sector", version 01.1 published by the Central Electricity Authority, Ministry of Power, Government of India. The "CO ₂ Baseline Database for Indian Power Sector", version 01.1 is available at www.cea.nic.in .
Value(s) applied)	2002 – 2003 = 0.9993 2003 – 2004 = 0.9869 2004 – 2005 = 0.9756
Choice of data or measurement methods and procedures	The data has been taken from CEA database.
Purpose of data	Calculation of Baseline Emissions
Additional comments	None

Data/parameter:	$EF_{BM, y}$
Unit	tCO ₂ e/MWh
Description	Build Margin Emission Factor of Northern Regional Electricity Grid
Source of data	"CO ₂ Baseline Database for Indian Power Sector", version 01.1 published by the Central Electricity Authority, Ministry of Power, Government of India. The "CO ₂ Baseline Database for Indian Power Sector", version 01.1 is available at www.cea.nic.in .
Value(s) applied)	2004 – 2005 = 0.5335
Choice of data or measurement methods and procedures	The data has been taken from CEA database.
Purpose of data	Calculation of Baseline Emissions
Additional comments	None

Data/parameter:	$EF_{CM, y}$
Unit	tCO ₂ e/MWh
Description	Combined Margin Emission Factor of Northern Regional Electricity Grid
Source of data	"CO ₂ Baseline Database for Indian Power Sector", version 01.1 published by the Central Electricity Authority, Ministry of Power, Government of India. The "CO ₂ Baseline Database for Indian Power Sector", version 01.1 is available at www.cea.nic.in .
Value(s) applied)	0.87387
Choice of data or measurement methods and procedures	The data has been taken from CEA database.
Purpose of data	Calculation of Baseline Emissions
Additional comments	None

D.2. Data and parameters monitored

Data/parameter:	EGy
Unit	MWh (Mega-Watt hour)
Description	Net electricity supplied to the grid by the Project
Measured/calculated/default	Calculated
Source of data	Calculated as the difference of EG Export and EG Import and sourced from the monthly credit notes. This value can be cross-checked from the invoices raised to the DISCOM.
Value(s) of monitored parameter	50,286.49
Monitoring equipment	Calculated as per the procedures shown in section C.
Measuring/reading/recording frequency:	Monthly
Calculation method (if applicable):	<p>The net electricity supply is calculated as follows: $= (EG_{\text{Export}} - EG_{\text{Import}})$</p> <p>This value is directly used for calculation of emission reduction. Detailed procedures have been described in section C.</p>
QA/QC procedures:	<p>Details of the QA/QC procedures have been described in section C.</p> <p>The data will be archived electronically as well as on paper. The data will be kept for the period up to two years after the completion of the crediting period.</p>
Purpose of data:	Calculation of baseline emissions
Additional comments:	None

Data/parameter:	EG_{JMR, Export}
Unit	MWh (Mega-Watt hour)
Description	Electricity exported as recorded by the main meter at EB substation.
Measured/calculated/default	Measured
Source of data	Export value from the Joint Meter reading taken at the substation in the presence of Wind World India representatives and the State Utility representatives.
Value(s) of monitored parameter	2,42,997.75

Monitoring equipment	<p>Line I Type- Tri-vector Meter Accuracy Class-0.2 Serial Number of Main Meter: TNU00946 Serial Number of Backup Meter: RJB00052</p> <p>Line II Type- Tri-vector Meter Accuracy Class-0.2 Serial Number of Main Meter: TNU00945 Serial Number of Backup Meter: ABB00691</p> <p>Line I and Line II Main Meter Last date of Test- 13 Feb & 14 Feb 2015 Validity of Test- 12 Feb & 13 Feb 2016 respectively.</p> <p>Line I and Line II Check Meter Last date of Test- 14 Feb 2015 Validity of Test- 13 Feb 2016</p> <p>Frequency of Calibration- Annual</p>
Measuring/reading/recording frequency:	Measured in continuous basis and recorded on Monthly basis
Calculation method (if applicable):	Not Applicable
QA/QC procedures:	<p>The meters will be calibrated once in a year. Details of the QA/QC procedures have been described in section C.</p> <p>The data will be archived electronically as well as on paper. The data will be kept for the period up to two years after the completion of the crediting period.</p>
Purpose of data:	Calculation of baseline emissions
Additional comments:	None

Data/parameter:	EG JMR, import
Unit	MWh (Mega-Watt hour)
Description	Electricity import as recorded by the main meter at EB substation.
Measured/calculated/default	Measured
Source of data	Import value from the Joint Meter reading taken at the substation in the presence of Wind World India representatives and the State Utility representatives.
Value(s) of monitored parameter	4,29.75

Monitoring equipment	<p>Line I Type- Tri-vector Meter Accuracy Class-0.2 Serial Number of Main Meter: TNU00946 Serial Number of Backup Meter: RJB00052</p> <p>Line II Type- Tri-vector Meter Accuracy Class-0.2 Serial Number of Main Meter: TNU00945 Serial Number of Backup Meter: ABB00691</p> <p>Line I and Line II Main Meter Last date of Test- 13 Feb & 14 Feb 2015 Validity of Test- 12 Feb & 13 Feb 2016 respectively.</p> <p>Line I and Line II Check Meter Last date of Test- 14 Feb 2015 Validity of Test- 13 Feb 2016</p> <p>Frequency of Calibration- Annual</p>
Measuring/reading/recording frequency:	Measured in continuous basis and recorded on Monthly basis
Calculation method (if applicable):	Not Applicable
QA/QC procedures:	<p>The meters will be calibrated once in a year. Details of the QA/QC procedures have been described in section C.</p> <p>The data will be archived electronically as well as on paper. The data will be kept for the period up to two years after the completion of the crediting period.</p>
Purpose of data:	Calculation of baseline emissions
Additional comments:	None

Data/parameter:	ΣEG Controller, Export
Unit	MWh (Mega-Watt hour)
Description	Electricity exported by all the WECs connected to the main meter at the substation, as measured at the controller panel.
Measured/calculated/default	
Source of data	This value is monitored on continuous basis by online monitoring system at the site and can also be seen at the electronic panel inside the WTG tower.
Value(s) of monitored parameter	52,857.57
Monitoring equipment	The LCS meters (for panel reading) do not require calibration as the energy readings of electricity generated at the LCS meter is cross verified by the energy calculated by inverting system installed in the WECs. In case, there is any mismatch in the energy values recorded by the LCS meter and the energy values calculated by the inverting system, the machine will stop working and generate the error report.
Measuring/reading/recording frequency:	Monthly basis; This value is monitored on continuous basis by online monitoring system at the site.
Calculation method (if applicable):	Not Applicable

QA/QC procedures:	<p>The LCS meters (for panel reading) do not require calibration as the energy readings of electricity generated at the LCS meter is cross verified by the energy calculated by inverting system installed in the WECs. In case, there is any mismatch in the energy values recorded by the LCS meter and the energy values calculated by the inverting system, the machine will stop working and generate the error report.</p> <p>The data will be archived electronically as well as on paper. The data will be kept for the period up to two years after the completion of the crediting period.</p>
Purpose of data:	Calculation of baseline emissions
Additional comments:	None

Data/parameter:	EG_{Export}
Unit	MWh (Mega-Watt hour)
Description	Electricity exported to the grid by the project activity.
Measured/calculated/default	Calculated
Source of data	The calculation procedure has been shown in the section C.
Value(s) of monitored parameter	50,568.55
Monitoring equipment	Calculated as per the procedures shown in section C.
Measuring/reading/recording frequency:	Monthly basis
Calculation method (if applicable):	Calculated as per the procedures shown in section C.
QA/QC procedures:	<p>No separate QA/QC procedures will be followed.</p> <p>The data will be archived electronically as well as on paper. The data will be kept for the period up to two years after the completion of the crediting period.</p>
Purpose of data:	Calculation of baseline emissions
Additional comments:	None

Data/parameter:	EG_{import}
Unit	MWh (Mega-Watt hour)
Description	Electricity imported to the grid by the project activity.
Measured/calculated/default	Calculated
Source of data	The calculation procedure has been shown in the section C.
Value(s) of monitored parameter	93.18
Monitoring equipment	Calculated as per the procedures shown in section C.
Measuring/reading/recording frequency:	Monthly basis
Calculation method (if applicable):	Calculated as per the procedures shown in section C.
QA/QC procedures:	<p>No separate QA/QC procedures will be followed.</p> <p>The data will be archived electronically as well as on paper. The data will be kept for the period up to two years after the completion of the crediting period.</p>
Purpose of data:	Calculation of baseline emissions
Additional comments:	None

D.3. Implementation of sampling plan

>>

Not applicable to the project activity.

SECTION E. Calculation of emission reductions or GHG removals by sinks**E.1. Calculation of baseline emissions or baseline net GHG removals by sinks**

>>

As described in the registered PDD, the baseline emission (BE_y) = **EG_y * EF_y**

Where,

BE is baseline emissions in year y, tCO₂e**EG_y** is the net electricity supplied to the grid in year y and is sourced from the credit notes and can be cross-checked with the invoices raised to the DISCOM.**EF_y** is the CO₂ emission factor of the grid (0.87387 tCO₂e/ MWh; fixed ex-ante).

Baseline Emission reduction calculation for the period 01/04/2014 to 30/04/2015 (Inclusive of both days):

$$\begin{aligned}\text{Baseline Emission Reductions (BE}_y\text{)} &= 50,286.49^3 \text{ (MWh)} * 0.87387 \text{ (tCO}_2\text{e/ MWh)} \\ &= \mathbf{43,943 \text{ tCO}_2\text{e}} \text{ (rounded down value has been considered)}\end{aligned}$$

Therefore, total baseline emissions are **43,943 tCO₂e**.

Total project emissions: Zero

Total leakages: Zero

$$\begin{aligned}\text{Total Emission reductions, ER} &= \text{Baseline Emissions} - \text{Project Emissions} - \text{Leakages} \\ &= \mathbf{43,943 - 0 - 0} \\ &= \mathbf{43,943 \text{ tCO}_2\text{e}}\end{aligned}$$

The details of net electricity generation that is produced and fed into the grid as a result of the implementation of the CDM project activity is provided in ER spreadsheet.

E.2. Calculation of project emissions or actual net GHG removals by sinks

>>

The project activity uses wind power to generate electricity and hence, the emissions from the project activity have been taken as zero.

$$\text{PE}_y = 0$$

E.3. Calculation of leakage

>>

No leakage has been considered from the project activity as per approved methodology ACM0002.

Hence, $\text{L}_y = 0$

³ There is a technical fault (connectivity failure during data transfer in entire monitoring period) in the WEC owned by M/s G. C. Chemie Pharmie Ltd during the entire monitoring period. Also, there was delay in main meter calibration observed for a period "25/12/2014 to 14/02/2015", hence conservatively meter error factor has been applied for the generation data for the month Dec 2014, Jan-Feb 2015.

E.4. Summary of calculation of emission reductions or net GHG removals by sinks

Item	Baseline emissions or baseline net GHG removals by sinks (t CO ₂ e)	Project emissions or actual net GHG removals by sinks (t CO ₂ e)	Leakage (t CO ₂ e)	GHG emission reductions or net GHG removals by sinks (t CO ₂ e) achieved in the monitoring period		
				Up to 31/12/2012	From 01/01/2013	Total amount
01/04/2014 to 31/08/2015 (inclusive of both days)	43,943	0	0	NA	43,943	43,943

E.5. Comparison of actual emission reductions or net GHG removals by sinks with estimates in registered PDD

Item	Values estimated in ex ante calculation of registered PDD	Actual values achieved during this monitoring period
Emission reductions or GHG removals by sinks (t CO ₂ e)	71,128	43,943

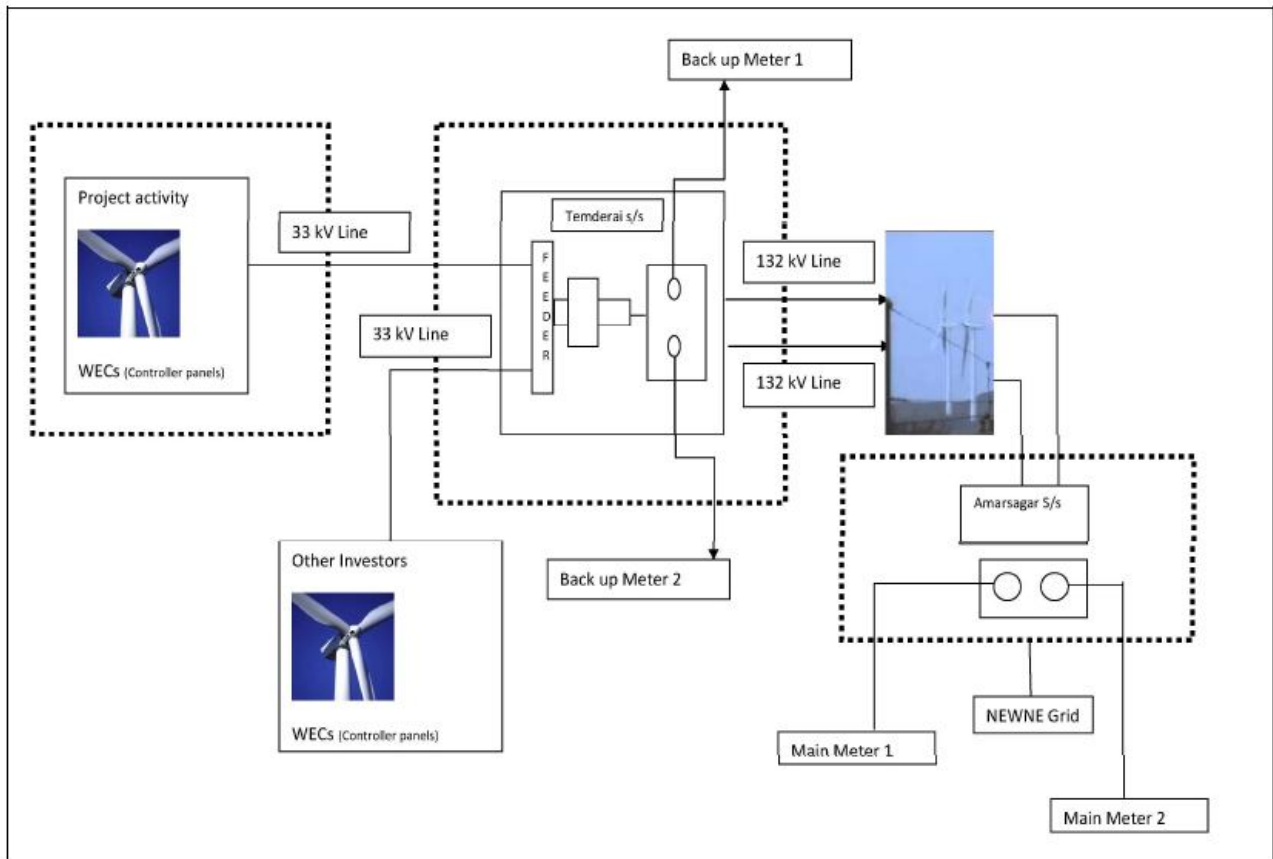
E.6. Remarks on difference from estimated value in registered PDD

>>

There is change of 38.22 % (decrease) in the expected and actual emission reductions. The actual CERs are lesser than the CERs expected for the same during, and this difference in the total CERs is due to low wind availability leading to low plant load factor and also due to the technical failure of machine for particular client "G. C. Chemie Pharmie Ltd."

Appendix 1. Contact information of project participants and responsible persons/entities

Project participant and/or responsible person/ entity	<input checked="" type="checkbox"/> Project participant <input checked="" type="checkbox"/> Person/entity responsible for completing the CDM-MR-FORM
Organization name	Wind World (India) Limited
Street/P.O. Box	A-9, Veera Industrial Estate, Veera Desai Road, Andheri West
Building	Wind World Tower
City	Mumbai
State/region	Maharashtra
Postcode	400 053
Country	India
Telephone	+91-22-2671 7176
Fax	+91 22 66921177
E-mail	yogesh.mehra@windworldindia.com
Website	www.windworldindia.com
Contact person	
Title	Managing Director
Salutation	Mr.
Last name	Mehra
Middle name	
First name	Yogesh
Department	Corporate
Mobile	+91-9820040301
Direct fax	+91 22 66921177
Direct tel.	+91-22-6692 4848 extn. 7111
Personal e-mail	yogesh.mehra@windworldindia.com

Appendix 2. Line Diagram Showing Relevant Metering Points

- - - - -

Document information

<i>Version</i>	<i>Date</i>	<i>Description</i>
05.1	4 May 2015	Editorial revision to correct version numbering.
05.0	1 April 2015	Revisions to: <ul style="list-style-type: none"> • Include provisions related to delayed submission of a monitoring plan; • Provisions related to the Host Party; • Remove reference to programme of activities; • Overall editorial improvement.
04.0	25 June 2014	Revisions to: <ul style="list-style-type: none"> • Include the Attachment: Instructions for filling out the monitoring report form (these instructions supersede the "Guideline: Completing the monitoring report form" (Version 04.0)); • Include provisions related to standardized baselines; • Add contact information on a responsible person(s)/ entity(ies) for completing the CDM-MR-FORM in A.6 and Appendix 1; • Change the reference number from <i>F-CDM-MR</i> to <i>CDM-MR-FORM</i>; • Editorial improvement.
03.2	5 November 2013	Editorial revision to correct table in page 1.
03.1	2 January 2013	Editorial revision to correct table in section E.5.
03.0	3 December 2012	Revision required to introduce a provision on reporting actual emission reductions or net GHG removals by sinks for the period up to 31 December 2012 and the period from 1 January 2013 onwards (EB70, Annex 11).
02.0	13 March 2012	Revision required to ensure consistency with the "Guidelines for completing the monitoring report form" (EB 66, Annex 20).
01	28 May 2010	EB 54, Annex 34. Initial adoption.
Decision Class: Regulatory Document Type: Form Business Function: Issuance Keywords: monitoring report		