

MONITORING REPORT
VERSION 01
15 February 2012
Southern Nicaragua CDM Reforestation Project
Reference number: 3970
The 1st monitoring period: 04/07/2003 – 06/01/2012

SECTION A. General description of the project activity

A.1. Brief description of the project activity:

A.1.1 Purpose of the project and the measures taken to reduce greenhouse gas emissions.

The project consists of the reforestation of 813 ha with teak and native wood species in Southern Nicaragua. The reforestation is carried out on former pasture lands. The objectives of this project is to contribute to the sustainable development of Nicaragua through reforestation to generate sustainable wood supplies to reduce pressure on natural forests and to serve as carbon sink.

This project will contribute to reducing poverty in one of the poorest regions of Central America. Subsistence agriculture and cattle farming are the main economic activities, and do not generate many job opportunities.

The project seeks to increase the amount of employment opportunities for rural poor and landless and prevent their emigration to neighboring Costa Rica.

This project is the major source of employment for local communities, including jobs on a permanent basis as well as seasonal jobs for tasks such as planting, maintenance, weeding, pruning, fire control, thinning and harvesting.

The wages paid to workers are above average wage, which is significantly above the minimal wage. The project also provides training and career opportunities for young people.

A.1.2 Brief description of the installed technology and equipment.

The major species planted under the project is teak (*Tectona grandis*), but there are also a variety of valuable native species. Most of these native species have become rare or threatened due to overexploitation of natural forest in Central America. Some are important as fruit, food and habitat for wildlife.

The environmental benefits of the project include prevention of fire and erosion, protection of groundwater, and improvement of soil and microclimate. The project obtained certification in accordance with the criteria laid out by the Forestry Stewardship Council (FSC) in 2007.

The project has a harvest cycle of 18 to 30 years, depending on site quality and species.

813 ha of reforestation are included in the project, and the distribution of plantings is divided as per the following table:

Farm	2003	2004	2005	2006	TOTAL
Esperanza					
Teak	42	115	-	-	157
Native	2	8	-	-	10
Pimienta					
Teak	91	163	2	-	256
Native	5	6	2	-	13
Javalina					
Teak	-	-	171	180	351
Native	-	-	14	12	26
TOTAL	140	292	189	192	813

A.1.3 Relevant dates for the project activity

The proposed project started planting on 04/07/2003 and finished planting on 18/08/2006.

A.1.4 Total emission reductions achieved in this monitoring period

The total emission reductions achieved in this monitoring period are 94,046 t CO₂-e.

A.2. Project Participants:

Name of Party involved (*) ((host) indicates a host Party)	Private and/or public entity(ies) project participants (*) (as applicable)	Indicate if the Party involved wishes to be considered as a project participant (Yes/No)
Nicaragua (host party)	Precious Woods Nicaragua SA	No
Canada	International Bank for Reconstruction and Development as a trustee of Biocarbon Fund	Yes

(*) At the time of making the CDM-SSC-AR-PDD public at the stage of validation, a Party involved may or may not have provided its approval. At the time of requesting registration, the approval by the Party(ies) involved is required.

A.3. Location of the project activity:

The project is located on different former cattle ranches in Southern Nicaragua. By 2005 three locations were selected for plantation establishment. The first two locations are near the village of Sapoá, in Southwestern Nicaragua between the border with Costa Rica, Lake Nicaragua and the Pacific Ocean. The topography of these sites is hilly with altitudes varying between 50 and 250 m above sea level. The third site is near the village of Esperanza east of Lake Nicaragua on the Rio San Juan, at an altitude of 40-60 m.

The coordinates of the three sites are: Site 1: 11°11'05'' N , 85°38'14'' O, Site 2: 11°14'42'' N , 85°41'02'' O, Site 3: 11°05'34'' N , 84°32'40'' O.

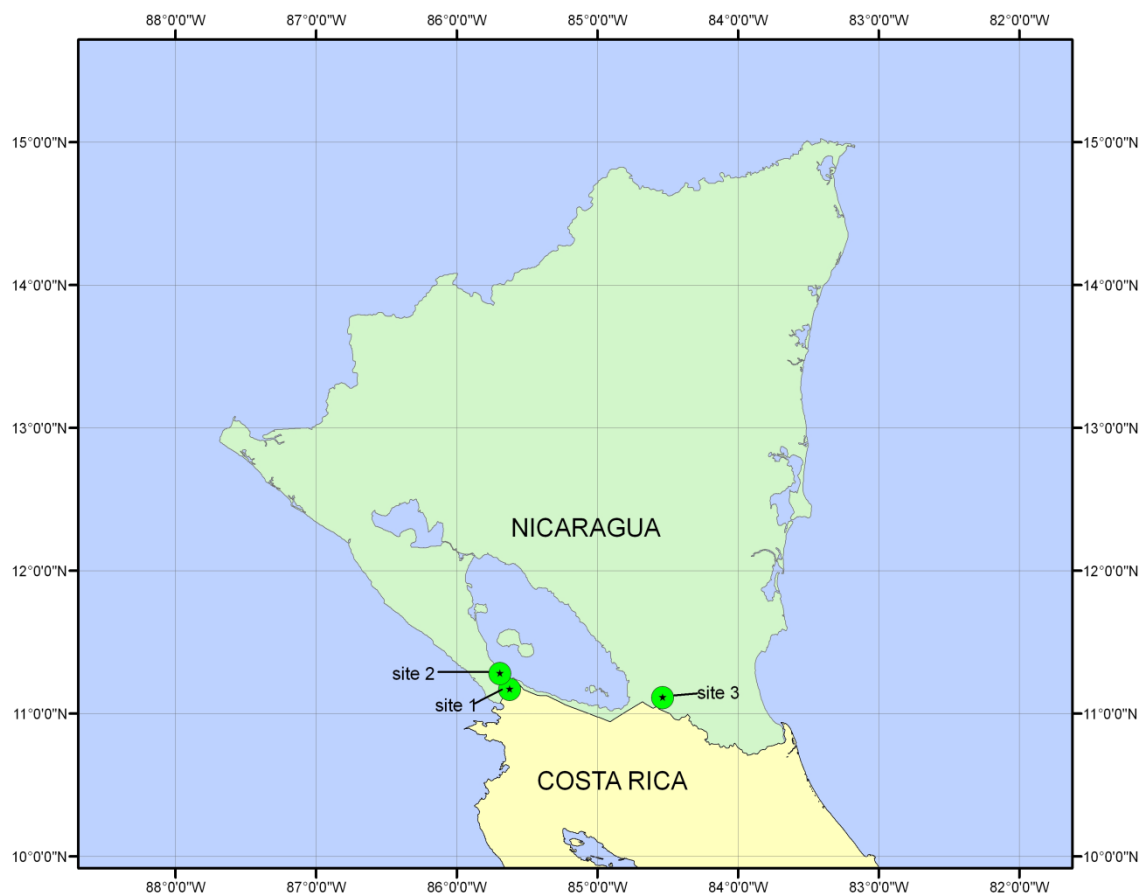


Figure A-1 The location of the project

A.4. Technical description of the project:

The plantation aims at establishing a diverse mosaic landscape that integrates plantations of teak and native species with pre-existing single trees. The planting is done manually and use of machinery is very limited for the maintenance of the plantation.

Planting

The reforestation is carried out with seedlings produced in greenhouses and nurseries from seeds and vegetative reproduction. For some species, seeds are planted directly into the soil. The topography is hilly and ploughing was carried out only on completely flat areas. In total, 7.8% of the planting area was ploughed. Maps of the ploughed area can be found in the annex. Vegetation is removed only around the seedlings. The planting has been done using manual methods.

With exception of one single dose of bokashi, an organic fertilizer based on chicken manure, which is added to each planting hole, no fertilizer is applied. In total, 278 kg of bokashi is applied per ha, which totals about 230 tons for the entire project. This value has been used to calculate emissions from organic fertilizer use. By applying the A/R methodological tool “Estimation of direct nitrous oxide emission from nitrogen fertilization”, it is demonstrated that the project emissions from the use of organic fertilizer do not represent more than 10% of the emission reductions from the project. The total project emissions from fertilizer use are less than 1%.

Tending

The undergrowth vegetation in the plantation is trimmed manually with machetes (chapea) at periodic intervals in order to control weed competition to the young trees. The tending activities were carried out up to 3 years after planting and have enabled the trees to reach sufficient height to withstand competition from undergrowth vegetation.

Thinning and Harvesting

Thinning is carried out at different ages to enable healthy stand growth. The harvesting cycle is expected to vary between 18 and 30 years as per the site quality and silvicultural requirements of species. For the harvest, low impact harvest techniques will be applied. The reforestation will remain in place after conclusion of the first harvesting cycle. After felling, the trees are replanted immediately or regrown from coppice shoots.

Thinning is carried out in years 6, 9 and 12 in the plantations of teak. In the case of native species, the schedule of thinning depends on growth and the relationship between the current annual increment and mean annual increment.

Fire prevention

Due to the frequency of fires in the region, fire prevention measures are carried out during the dry season. This includes removal of vegetation along fences, 24-hour surveillance during dry season, and permanent availability of water supply and equipment to fight fire. As the teak trees reach a height of 4-6 meters (2-3 years), the risk of mortality due to fire is substantially reduced because of the high fire resistance of the species.

Biodiversity

The proposed project differs greatly from the traditional commercial plantations as it is designed to have substantial benefits in relation to biodiversity. In addition to teak, a number of native forest species and fruit-bearing trees have been planted.

A.5. Title, reference and version of the baseline and monitoring methodology applied to the project activity:

AR-AMS0001 ver. 5 - Simplified baseline and monitoring methodologies for small-scale afforestation and reforestation project activities under the clean development mechanism implemented on grasslands or croplands.

For more information regarding the methodology, please refer to the following link.

http://cdm.unfccc.int/filestorage/7/M/C/7MCTB9XAQK8P6NFRSIGLWHV4OEY23D/EB56_repa_n11_AR_AMS0001_ver06.pdf?t=cIR8MTMwNDAwNjkzNi4xNQ==|D4mbhZKy74w4WBBP1j0GbIZxSSQ=

A.6. Registration date of the project activity:

07/05/2011

A.7. Crediting period of the project activity and related information (start date and choice of crediting period:

The project proposes to implement several planting and harvesting cycles and has no determined end of life. The fixed crediting period of 30 years is chosen for accounting GHG removals in the project. The start date of the project is 04 July 2003.

A.8. Name of responsible person(s)/entity(ies):

Responsible person and entity for completing the monitoring report form (CDM-MR):
Mr. Victor Arce, MADERAS PRECIOSAS NICARAGUA S.A. (Precious Woods Nicaragua SA)
E-mail: victor.arce@preciouswoods.co.cr, Tel: (506)2666-2333 ext104

SECTION B. implementation of the project activity

B.1. Implementation status of the project activity:

The starting date of the project activity is 04 July 2003, when the planting of the first lot started on Pimienta and Esperanza farms. In the case of Javalina farm, the start of planting was 15 July 2005.

The fixed crediting period of the proposed project is 30 years (30 years-00-months) from 04 July 2003 to 03 July 2033.

During this first monitoring period there was a reduction in the carbon stock forecast, due to bad growth of the teak and native species in some low lands, where the water accumulation provoked the death of the majority of the trees. In other cases, in some protected areas near creeks and small

rivers, the growth of the existing vegetation was more aggressive than teak and planted native species, leading to a reduction in the plantation areas.

The amount of unsuccessful hectares was 83 hectares, distributed as follows: 61 ha. in Javalina, of which 38 ha were planted with natives and 23 ha with teak; and 22 ha in Pimienta, of which 21 ha was planted with teak and 1 with natives.

Due to these events, it was decided to replant 60 hectares of the unsuccessful areas with teak in 2013. For this new plantation, the preparation of the land will have to take into account the needs of the teak to ensure good growth in these areas.

As a result, the new distribution of the plantations is divided as per the following table:

Farm	2003	2004	2005	2006	2013	TOTAL
Esperanza						
Teak	42	115	-	-	-	157
Native	2	7	-	-	-	9
Pimienta						
Teak	86	146	2	-	-	234
Native	5	6	2	-	-	13
Javalina						
Teak	-	-	149	147	60	356
Native	-	-	11	7	-	18
TOTAL	135	274,49	164	154,49	60	788

Related to the thinnings, sanitary thinning was applied in the years 2007, 2008, 2009 and 2010 for the 2003, 2004, 2005 and 2006 plantings respectively. The first thinning for management was applied in the years 2010 and 2011 just for the 2003 and 2004 plantings in the Pimienta farm.

No special events occurred or events that might impact the applicability of the methodology.

B.2. Revision of the monitoring plan:

There is no revision to the monitoring plan.

B.3. Request for deviation applied to this monitoring period:

There is no deviation applied to this monitoring period.

B.4. Notification or request of approval of changes:

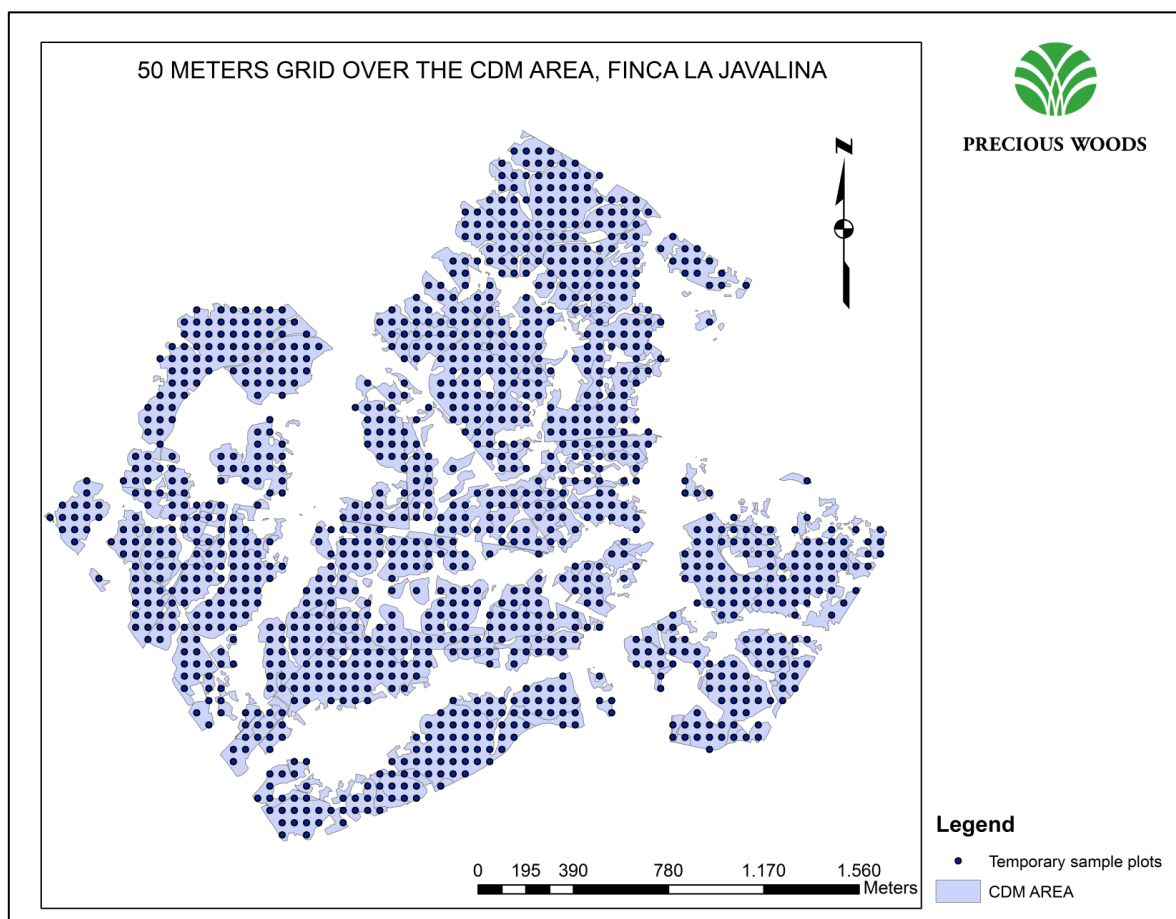
There is no notification or request of approval of changes from the proposed project as described in the registered CDM-PDD (version 02).

SECTION C. Description of the monitoring system

1. Stratification

The project area is stratified. Parameters for initial stratification are tree species (native species and teak) and planting year (2003 to 2006).

In year 4 after planting, the stratification was refined with strata that represent the growth conditions. These are mapped based on a grid of geo-referenced systematically distributed circular temporary sample plots of 100 m² with a distance of 50 m between every plot, as is shown in the next figure for Javalina farm:



In each plot diameter at breast height (DBH) of every tree is measured. Total volume of the tree is calculated as a function of DBH, using an allometric formula. The average volume of each plot is then assigned to a growth class. With the help of a GIS computer program with interpolation functionality, a growth map with homogeneous growth conditions is produced.

The final stratification thus separates:

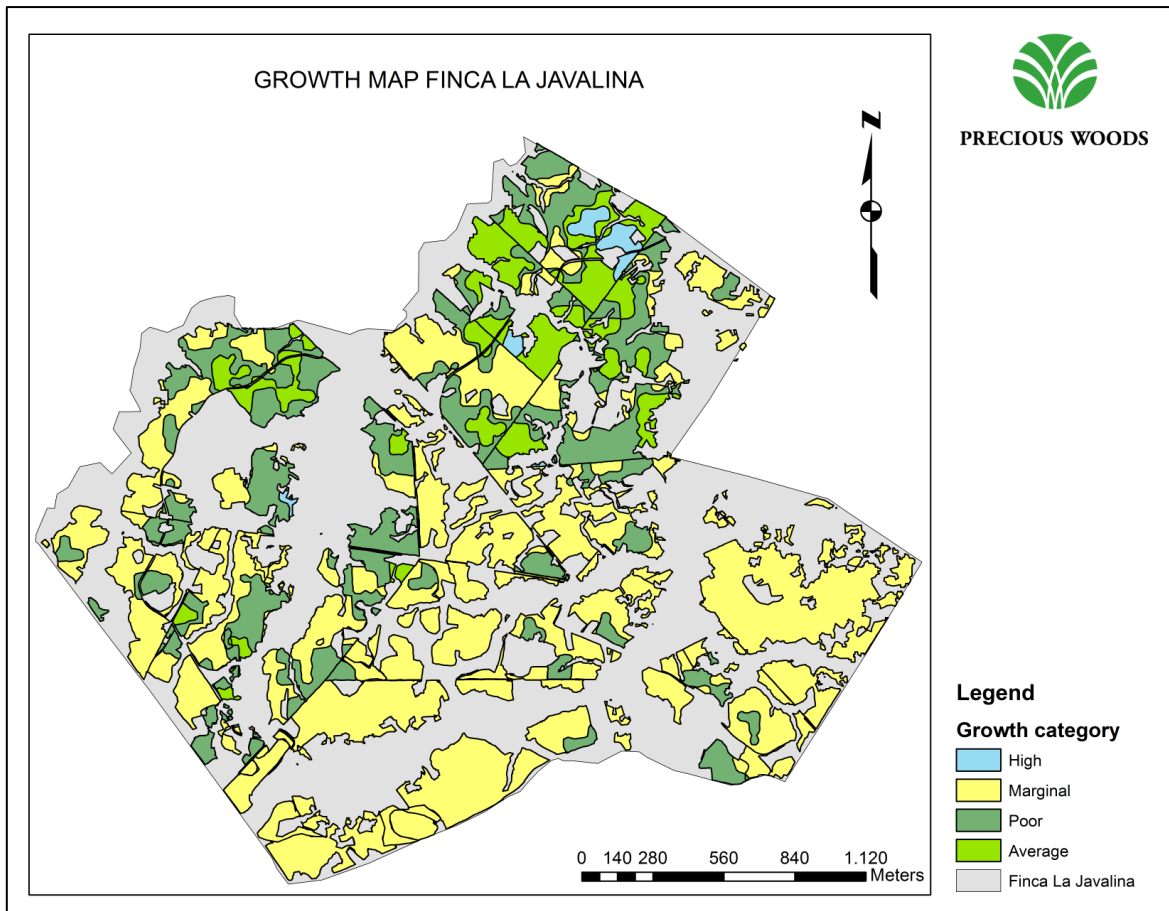
1. Tree species / species group

2. Planting year

3. Growth class

Stratification

Tree species /species group	Planting year	Growth class	Stratum ID
Natives	2003	Average	N03A
Natives	2004	Average	N04A
Natives	2005	Average	N05A
Natives	2006	Average	N06A
Teak	2003	High	T03H
Teak	2003	Marginal	T03M
Teak	2003	Poor	T03P
Teak	2004	Marginal	T04M
Teak	2005	Average	T05A
Teak	2005	Marginal	T05M
Teak	2006	Marginal	T06M
Teak	2006	Poor	T06P
Teak	2013 (planned)	Marginal	T13M



2. Calculation of the number of sample plots

For the determination of the number of sample plots per stratum, the Methodical Tool “Calculation of the number of sample plots for measurements within A/R CDM project activities” (Version 01) is used.

To calculate the number of permanent sample plots used for monitoring, the formula of method II (samples drawn with replacement) of this tool are used. The number of plots per stratum is determined according to a targeted precision level of $\pm 10\%$ of the mean at a 95% confidence level. The standard deviation within each stratum is derived from the data underlying the growth map.

3. Sample plot size

The area of the permanent sample plots is 500 m^2 . The plots are circular.

4. Permanent sample plot location

The plots are located systematically with a random location of the starting plot, identified prior to establishment using a GIS program, geo-referenced and marked in the field. Series number, stratum and GPS coordinates are registered in a database.

5. Data record

The measurements are made by three groups of two workers each. They take the DBH of each tree inside of the permanent sample plot, following the procedure of the company for forestry measurements. In this step the field workers have to do a preliminary revision, comparing the measurement with the last measurement made.

Then the data on paper are given to the person responsible for digitizing those data in an Excel spreadsheet that contains the last measurements, so that through subtraction this person can know if the value of the DBH is correct or not. After this revision, those data are copied and pasted on the SMART - Forms for ARAMS01V5.

To ensure the net anthropogenic GHG removals by sinks are measured and monitored precisely, credibly, verifiably and transparently, a quality assurance and quality control (QA/QC) procedure is implemented.

6. QA/QC Procedures

a) Reliable field measurements

To ensure reliable field measurements, Standard Operating Procedures (SOPs) for each step of the field measurements, including all detailed phases of the field measurements and provision of documentation for verification purposes, are proposed in this document and will be adjusted periodically.

Training courses on field data collection and data analysis will be held for persons involved in the field measurement work. The training courses will ensure that each field-team member is fully aware of all procedures and the importance of collecting data as accurately as possible.

b) Verification of field data collection

To verify that plots have been installed and measurements taken correctly,

- Randomly selected plots are re-measured by teams other than those involved in the prior plot measurements.
- Key re-measurement elements include the location of plots, DBH and tree height.
- The re-measurement data are compared with the original measurement data. Errors assessed in the prior measurements will be corrected and recorded and will be used to calculate the measurement error.

c) Verification of data entry and analysis

To minimize the possible errors in the process of data entry, the entry of both field data and laboratory data are reviewed by an independent expert team and compared with independent data to ensure that the data are realistic. Communication between all personnel involved in measuring and analyzing data are used to resolve any apparent anomalies before the final analysis of the monitoring data is completed.

d) Data maintenance and archiving

Data archiving takes both electronic and paper forms, and copies of all data are provided to each project participant. All electronic data and reports are be copied on durable media such as CDs, and copies of the CDs are stored in multiple locations. The archives include:

- Copies of all original field measurement data, laboratory data, and data analysis spreadsheets;

- Estimates of the carbon stock changes in all pools and non-CO2 GHG and corresponding calculation spreadsheets;
- GIS products.

All the media will be stored for at least 5 years after verification.

8. Organizational structure

The structure of the CDM Monitoring Office set up is outlined below:

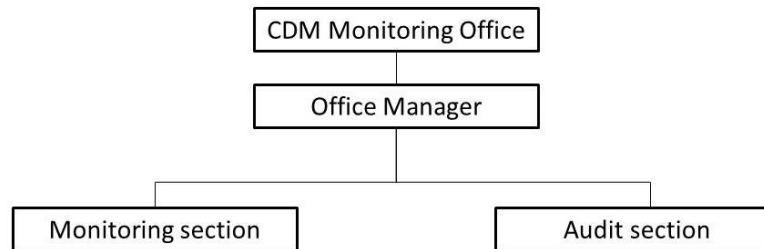


Figure C-1. The organization of the CDM project management office

9. Roles and responsibilities

Office manager: Mr. Victor Arce is the responsible person for coordinating and managing the work of the CDM Monitoring Office and is in charge of all matters relevant to the monitoring activity.

Monitoring section: Mr. Dennis Martinez is responsible for collecting, processing and archiving the data.

Audit section: Mr. Mario Espinoza is responsible for auditing the work of the monitoring section.

SECTION D. Data and parameters

D.1. Data and parameters determined at registration and not monitored during the monitoring period, including default values and factors

Data / Parameter:	Stratum ID
Data unit:	Alpha numeric
Description	Area that has a particular combination of soil type, climate, existing vegetation and land form
Source of data used:	Stratification map
Value(s)	Stratum 1 - Area planted with teak for harvesting at 30 years Stratum 2 - Area planted with teak for harvesting at 18 years Stratum 3 - Area planted with native tree species
Indicate what the data are used for:	This data are used to calculate the number of sample plots needed in each stratum.
Additional comment:	

Data / Parameter:	Sub-stratum ID
Data unit:	Alpha numeric
Description	Area that has a particular year to be planted and a particular site quality under each stratum

Source of data used:	Stratification map			
Value(s)	N03A		T04M	
	N04A		T05A	
	N05A		T05M	
	N06A		T06M	
	T03H		T06P	
	T03M		T13M	
	T03P			
Indicate what the data are used for:	This data are used to calculate the number of sample plots needed in each stratum.			
Additional comment:				

Data / Parameter:	Confidence level
Data unit:	%
Description	Is the range of values (calculated in a sample) in which is the true value of the parameter with a given probability.
Source of data used:	
Value(s)	90%
Indicate what the data are used for:	This data is used to calculate the number of sample plots needed in each stratum.
Additional comment:	

Data / Parameter:	Precision level
Data unit:	%
Description	Is the probability of error
Source of data used:	
Value(s)	10%
Indicate what the data are used for:	This data is used to calculate the number of sample plots
Additional comment:	

Data / Parameter:	Standard deviation of each stratum
Data unit:	m ³
Description	Measure of centralization or dispersion of data
Source of data used:	Measurements used for the development of growth maps
Value(s)	See annex # 1
Indicate what the data are used for:	Used for estimating numbers of sample plots of each stratum and substratum
Additional comment:	

Data / Parameter:	Number of sample plot
Data unit:	
Description	Quantity of permanent sample plots established
Source of data used:	Stratum ID, Sub-stratum ID, Growth maps, Confidence level, Precision level and Standard deviation.
Value(s)	701 permanent sample plots
Indicate what the data are used for:	Used to calculate the amount of CO ₂ fixed, according to the confidence level
Additional comment:	

Data / Parameter:	Sample plot ID
Data unit:	Alpha numeric

Description:	Numeric series ID of each permanent sample plot
Source of data used:	Project and plot map
Value(s)	See annex # 2
Indicate what the data are used for:	This data is used to identify each sample plot
Additional comment:	

Data / Parameter:	Carbon fraction
Data unit:	tC (t d.m)-1
Description:	content of C of the dry matter
Source of data used:	IPCC default value
Value(s)	0.5
Indicate what the data are used for:	This data is used to calculate the actual net GHG removals by sink
Additional comment:	

D.2. Data and parameters monitored

Data / Parameter:	Plot location
Data unit:	Degrees, minutes and seconds latitude longitude projection (Datum WGS84)
Description:	Geographic location of each permanent sample plot.
Measured/Calculated/Default	Measured
Source of data used:	Project and plot map and GPS locating
Value(s)	See annex # 3
Indicate what the data are used for :	Used to find the permanent sample plots, during the measurements
Monitoring Equipment (type accuracy class, serial number, calibration)	GPS Garmin map 76CSx, accuracy of ± 3 meters
Measuring/Reading/ Recording frequency:	Measuring/reading and record every 5 years
Calculation method (if Applicable):	Not applicable
QA/QC procedures applied:	“PROTOCOLO DE MEDICION E INSTALACIÓN DE PARCELAS PERMANENTES Y DISEÑO DE MAPAS DE CRECIMIENTO EN PLANTACIONES FORESTALES. 2012”

Data / Parameter:	Trees species
Data unit:	
Description:	Identification of the species of each tree measured
Measured/Calculated/ Default:	Measured
Source of data used:	Project design map
Value(s):	See annex # 4
Indicate what the data are used for	This data is used to calculate the actual net GHG removals by sink

Monitoring Equipment (type accuracy class, serial number, calibration)	
Measuring/Reading/Recording frequency:	Measuring/reading and record every 5 years
Calculation method (if Applicable):	Not applicable
QA/QC procedures applied:	“PROTOCOLO DE MEDICION E INSTALACIÓN DE PARCELAS PERMANENTES Y DISEÑO DE MAPAS DE CRECIMIENTO EN PLANTACIONES FORESTALES. 2012”

Data / Parameter:	Age of plantation
Data unit:	Years
Description:	Years older of the plantation, counted since planted year
Measured/Calculated/Default:	Calculated
Source of data used:	Plot measurement
Value(s) of monitored Parameter:	See annex # 5
Indicate what the data are used for	
Monitoring Equipment (type accuracy class, serial number, calibration)	
Measuring/Reading/Recording frequency:	Measuring/reading and record every 5 years
Calculation method (if Applicable):	Age years = (Planting date – measure date)/365
QA/QC procedures applied:	“PROTOCOLO DE MEDICION E INSTALACIÓN DE PARCELAS PERMANENTES Y DISEÑO DE MAPAS DE CRECIMIENTO EN PLANTACIONES FORESTALES. 2012”

Data / Parameter:	Number of trees
Data unit:	Number
Description:	Quantity of trees include in the sample plots
Measured/Calculated/Default:	Measured
Source of data used:	Plot measurement
Value(s) of monitored Parameter:	22950, See attached EXCEL sheet ‘NPW-ARAMS0001V5 Report’, worksheet ‘TreeData’
Indicate what the data are used for (Baseline/project Leakage emission calculations)	This data is used to calculate the actual net GHG removals by sink
Monitoring Equipment (type accuracy class, serial number, calibration)	This parameter can be measured without any equipment
Measuring/Reading/Recording frequency:	Measuring/reading and record every 5 years
Calculation method (if Applicable):	
QA/QC procedures applied:	“PROTOCOLO DE MEDICION E INSTALACIÓN DE

	PARCELAS PERMANENTES Y DISEÑO DE MAPAS DE CRECIMIENTO EN PLANTACIONES FORESTALES. 2012”
--	---

Data / Parameter:	Diameter at breast height (DBH)
Data unit:	cm
Description:	Diameter of each tree inside of the plot at 1,30 m height
Measured/Calculated/Default:	Measured
Source of data used:	Plot measurement
Value(s) of monitored Parameter:	See attached EXCEL sheet ‘NPW-ARAMS0001V5 Report’, worksheet ‘TreeData’
Indicate what the data are used for (Baseline/project Leakage emission calculations)	This data is used to calculate the actual net GHG removals by sink
Monitoring Equipment (type accuracy class, serial number, calibration)	Stewe Diameter tape, with accuracy of ± 0.05 cm
Measuring/Reading/Recording frequency:	Measuring/reading and record every 5 years
Calculation method (if Applicable):	
QA/QC procedures applied:	“PROTOCOLO DE MEDICION E INSTALACIÓN DE PARCELAS PERMANENTES Y DISEÑO DE MAPAS DE CRECIMIENTO EN PLANTACIONES FORESTALES. 2012”

Data / Parameter:	Mean DBH
Data unit:	cm
Description:	Simple average of the DBH of all trees in 100% of permanent sample plots
Measured/Calculated/Default:	Calculated
Source of data used:	Measurement of the 100% of sample plots
Value(s) of monitored Parameter:	See annex # 6
Indicate what the data are used for (Baseline/project Leakage emission calculations)	This data is used to calculate the actual net GHG removals by sink
Monitoring Equipment (type accuracy class, serial number, calibration)	
Measuring/Reading/Recording frequency:	Measuring/reading and record every 5 years
Calculation method (if Applicable):	Calculated via Number of trees and Diameter at breast height (DBH)
QA/QC procedures applied:	“PROTOCOLO DE MEDICION E INSTALACIÓN DE PARCELAS PERMANENTES Y DISEÑO DE MAPAS DE CRECIMIENTO EN PLANTACIONES FORESTALES. 2012”

Data / Parameter:	Above ground biomass
Data unit:	M ³ ha ⁻¹
Description:	Dry matter contained in each tree over the ground
Measured/Calculated/ Default:	Calculated
Source of data used:	Field measurements of DBH
Value(s) of monitored Parameter:	See annex # 7
Indicate what the data are used for (Baseline/project Leakage emission calculations)	This data is used to calculate the actual net GHG removals by sink
Monitoring Equipment (type accuracy class, serial number, calibration)	
Measuring/Reading/ Recording frequency:	Measuring/reading and record every 5 years
Calculation method (if Applicable):	Calculated using the equations (3) and (4) as per as PDD via DBH
QA/QC procedures applied:	

Data / Parameter:	Carbon Fraction
Data unit:	tC (td.n)-1
Description:	
Measured/Calculated/ Default:	Default value
Source of data used:	IPCC
Value(s) of monitored Parameter:	0.5 for teak 0.5 for Native species
Indicate what the data are used for (Baseline/project Leakage emission calculations)	This data is used to calculate the actual net GHG removals by sink
Monitoring Equipment (type accuracy class, serial number, calibration)	
Measuring/Reading/ Recording frequency:	Before the first monitoring event
Calculation method (if Applicable):	
QA/QC procedures applied:	

Data / Parameter:	Area of stratum
Data unit:	ha
Description:	Actual area of each stratum
Measured/Calculated/ Default:	Measured
Source of data used:	Stratification map an data

Value(s) of monitored Parameter:	Stratum	Area ha
	N03A	6.77
	N04A	13.84
	N05A	12.96
	N06A	6.92
	T03H	49.96
	T03M	56.49
	T03P	21.51
	T04M	260.60
	T05A	1.60
	T05M	148.64
	T06M	115.80
	T06P	31.41
	T13M	59.93
Indicate what the data are used for (Baseline/project Leakage emission calculations)	This data is used to calculate the actual net GHG removals by sink	
Monitoring Equipment (type accuracy class, serial number, calibration)	GPS garmin 76csx, accuracy ± 3 m	
Measuring/Reading/Recording frequency:	Measuring/reading and record every 5 years	
Calculation method (if Applicable):		
QA/QC procedures applied:	“PROTOCOLO DE MEDICION E INSTALACIÓN DE PARCELAS PERMANENTES Y DISEÑO DE MAPAS DE CRECIMIENTO EN PLANTACIONES FORESTALES. 2012” AND “PROTOCOLO DE MEDICION DE AREAS 2012”	

Data / Parameter:	Project boundary
Data unit:	
Description:	Boundary of the project verified at the start of the project and at time of each field measurement
Measured/Calculated/Default:	Measured
Source of data used:	Project map and GPS locating
Value(s) of monitored Parameter:	See annex 3 and 4
Indicate what the data are used for (Baseline/project Leakage emission calculations)	This data is used to calculate the actual net GHG removals by sink
Monitoring Equipment (type accuracy class, serial number, calibration)	GPS garmin 76csx, accuracy ± 3 m
Measuring/Reading/Recording frequency:	Measuring/reading and record every 5 years

Calculation method (if Applicable):	
QA/QC procedures applied:	“PROTOCOLO DE MEDICION E INSTALACIÓN DE PARCELAS PERMANENTES Y DISEÑO DE MAPAS DE CRECIMIENTO EN PLANTACIONES FORESTALES. 2012” AND “PROTOCOLO DE MEDICION DE AREAS 2012”

SECTION E. Emission reductions calculation

E.1. Baseline emissions calculation

As per the registered PDD, the baseline net GHG removals by sinks for this project are considered as zero.

E.2. Project emissions calculation

Actual net greenhouse gas removals by sinks

The actual net greenhouse gas removals by sinks in year t are equal to:

$$\Delta C_{ACTUAL,t} = \Delta C_{PROJ,t} - GHG_{PROJ,t}$$

where:

$\Delta C_{ACTUAL,t}$ Actual net greenhouse gas removals by sinks in year t (t CO₂-e/year)

$\Delta C_{PROJ,t}$ Project GHG removals by sinks (t CO₂-e/year)

$GHG_{PROJ,t}$ Project emissions (t CO₂-e/year)

In accordance with the requirements of the methodology, the project emissions are considered insignificant and therefore:

$$GHG_{PROJ,t} = 0$$

Project GHG removals by sinks

The carbon stocks expressed in tCO₂-e shall be based on the following equations:

$$P(t) = \sum_{i=1}^I (P_{A(t)i} + P_{B(t)i}) * A_i * (44/12)$$

where:

$P(t)$ carbon stocks within project boundary at time t achieved by the project (tCO₂e)

$P_{A(t)I}$	carbon stocks in above-ground biomass at time t of stratum i achieved by the project activity during the monitoring interval (t C/ha)
$P_{B(t) i}$	carbon stocks in below-ground biomass at time t of stratum i achieved by the project activity during the monitoring interval (t C/ha)
A_i	project activity area of stratum i (ha)
i	stratum i (I= total number of strata)

The calculations shown below are performed for each stratum.

For above-ground biomass, $P_{A(t)}$ is calculated per stratum i as follows:

$$P_{A(t)} = E_{(t)i} * 0.5$$

where:

$P_{A(t)}$	carbon stocks in above-ground biomass at time t achieved by the project activity during the monitoring interval (t C/ha)
$E_{(t)i}$	estimate of above-ground biomass at time t achieved by the project activity (t dm/ha)
0.5	carbon fraction of dry matter (t C/t dm) - IPCC default value / AR-AMS0001

Calculation of above-ground biomass

The above-ground tree biomass (kg of dry matter per tree) is determined using the allometric equations relating biomass to DBH given in GPG LULUCF Table 4.A.1 for native species in tropical moist forests and Table 4.A.3 for Teak. The value for teak has been determined in this region by Kanninen and Perez at CATIE, Costa Rica. The value for native species is a general value for tropical moist forest because there are no specific values for most of the species. The results are multiplied with the number of trees per hectare to obtain kg of dry matter per hectare.

For teak: $AGB(t)_{teak} = 0.153 * DBH^{2.382}$
For native species: $AGB_{(t) native} = \exp^{[-2.289 + 2.649 * \ln(DBH) - 0.021 * (\ln(DBH))^2]}$
Biomass per hectare $E_{(t)i} = AGB_{(t)i} * NT_i$

where:

DBH	diameter at breast height
NT	number of trees per hectare

Calculation of Below-ground biomass

Below-ground carbon stocks per hectare are determined by one allometric equation for both teak and native species relating belowground biomass to aboveground biomass in tropical forests (GPG LULUCF Table 4.A.4), as follows:

$$PB = 0.5 * BGB_i$$

$$BGB = \exp[-1.085 + 0.9256 * \ln(AGB)]$$

Where:

EB	estimated below ground biomass per tree
0.5	carbon fraction of dry matter (t C/t dm) (IPCC default value / AR-AMS0001)

The attached spreadsheet 'NPW-ARAMS0001V5 Report' calculates the carbon stock changes by applying actual values (please refer to worksheet 'TreeBiomass').

E.3. Leakage calculation

As defined in the methodology, leakage is considered to be zero if evidence can be provided that the activity shift of the previous owners does not lead to deforestation or if the lands surrounding the areas that receive the activity shift are not forested.

The three different project sites had three previous owners, all of them cattle farmers. At project start, interviews with them were conducted. In order to obtain more detailed information on the current status, a second interview was conducted in 2009. The goal was to evaluate their future plans regarding location and businesses. The following table summarizes the outcome of these interviews¹.

Summary of the interviews with previous owners

Site	Previous owner	New planned occupation	Assessment of leakage
Finca Pimienta	Salvador Monterrey	Cattle farming	Mr. Monterrey possessed roughly 300 animals on his lands. 70% were displaced to his other finca, the rest was brought to the slaughterhouse. Mr. Monterrey moved the animals that were not slaughtered to his finca in Nandaime, a region along the Pan-American highway that has been deforested long ago and is traditionally and currently used for grazing. All the lands were already deforested at the time of displacement and used by Mr. Monterrey for cattle farming. No deforestation took place. He already owned this finca before project start. The displacement of the animals to that area did not and will not lead to deforestation. No leakage due to deforestation occurs.
Finca Javalina	Henry Urcuyo	Cattle farming/ Tourism	Mr. Urcuyo still lives in the same area.. As stated in the interview at the site visit of the DOE, all his cattle was brought to the slaughterhouse and was not displaced to another area. He continues being a cattle farmer in the same area but also has other business activities.
Finca Esperanza	Antonio Mendoza	Transport services and some agriculture	Mr. Mendoza stays in the same region. He owned 85 cows. In the second interview which took place in 2009, he stated that he had bought a new finca which was already deforested and used as

¹ Please note that these interviews took place during the validation process and have already been discussed in the registered PDD.

			pasture at that time. All the animals were displaced to this new finca.
--	--	--	---

According to the interviews it becomes clear that some animals were dislocated to other areas. The previous owners of the fincas reinvested the money they earned from the sale of their properties into new businesses or other lands. Two of them stay in the same areas. The third one displaced his activities from Rivas to Nandaime where he already possessed farmland before he sold the finca Pimienta. The animals themselves were often not displaced to other grazing areas but to the slaughterhouse.

Based on these findings, leakage is considered as zero for this project.

E.4. Emission reductions calculation / table

The net anthropogenic GHG removals by sinks are calculated as,

$$ER_{AR\ CDM, t} = \Delta C_{PROJ, t} - \Delta C_{BSL, t} - GHG_{PROJ, t} - L_t$$

where:

$ER_{AR\ CDM, t}$ Net anthropogenic GHG removals by sinks (t CO₂-e)

$\Delta C_{PROJ, t}$ Project GHG removals by sinks at time t (t CO₂-e)

$\Delta C_{BSL, t}$ Baseline net GHG removals by sinks (t CO₂-e)

$GHG_{PROJ, t}$ Project emissions (t CO₂-e)

L_t Leakage attributable to the project activity at time t (t CO₂-e)

Project GHG removals by sinks at time t	Baseline net greenhouse gas removals by sinks	Project emissions	Leakage attributable to the project activity at time t	Net anthropogenic greenhouse gas removals by sinks
t CO ₂ -e	t CO ₂ -e	t CO ₂ -e	t CO ₂ -e	t CO ₂ -e
94,046	0	0	0	94,046

E.5. Comparison of actual emission reductions with estimates in the CDM-PDD
--

Item	Values applied in ex-ante calculation of the registered CDM-PDD	Actual values reached during the monitoring period
Emission reductions (tCO ₂ e)	157,509 (cumulative net anthropogenic GHG removals by sinks for period 2003 – 2011)	94,046

E.6. Remarks on difference from estimated value in the PDD

The net anthropogenic GHG removals by sinks achieved in the monitoring period are lower than ex-ante calculation of the registered CDM-PDD. As discussed in section B.1 this is mainly caused by bad growth of the teak and the native species in some low lands, where the water accumulation provoked the death of the majority of the trees. In other cases, specifically some protected areas near creeks and little rivers, the growth of the existing vegetation was more aggressive than teak and planted native species, leading to a reduction in the plantation areas.

- - - - -

ANNEX # 1 STANDARD DEVIATION BY STRATUM

		Growth Category				
		Excellent	High	Average	Poor	Marginal
Esperanza						
2003						
	Native					
	Teak					0.0071
2004						
	Native			0.0302		
	Teak					0.0052
Javalina						
2005						
	Native			0.0184		
	Teak		0.0085	0.0103	0.0087	0.0076
2006						
	Native			0.0218		
	Teak		0.0094	0.0098	0.0107	0.0091
Pimienta						
2003						
	Native			0.0175		
	Teak	0.0404	0.0265	0.0270	0.0255	0.0205
2004						
	Native			0.0309		
	Teak	0.0250	0.0319	0.0115	0.0111	0.0117
2005						
	Native			0.0336		
	Teak	0.0090	0.0123	0.0097	0.0190	0.0071

ANNEX # 2 PERMANENT SAMPLE PLOTS ID

La laguna-1	El nancite-64	El lagarto-113	El Chaguite-24
Las trozas-2	El nancite-65	La milpa-115	La horqueta-25
Las trozas-4	El guabo-66	La milpa-116	La horqueta-26
Las trozas-7	El nancite-67	La milpa-117	El Chaguite-27
La laguna-8	El comando-68	La milpa-118	La cruz-28
La laguna-14	El guabo-69	El lagarto-119	La cruz-29
Las trozas-15	El guabo-70	La milpa-120	La cruz-30
La laguna-16	El comando-71	La milpa-121	La cruz-31
Las trozas-17	El nancite-73	La milpa-123	La cruz-33
Las trozas-18	La milpa-74	La milpa-124	La cruz-34
Las trozas-19	La milpa-75	La milpa-125	La cruz-35
Las trozas-20	El genizaro 2004-76	El puente-126	La cruz-36
Las trozas-21	La milpa-77	La milpa-127	El Chaguite-38
Las trozas-22	El guabo-78	La milpa-128	La cruz-39
Las trozas-23	El guabo-79	La milpa-129	La escoba-40
Las trozas-24	El nancite-80	El puente-130	El campamento-42
Las trozas-25	El nancite-81	La milpa-131	La cruz-43
El pozo esperanza-26	El comando-82	El puente-132	La cruz-44
El pozo esperanza-27	El genizaro 2004-83	El puente-133	La cruz-45
El pozo esperanza-29	La milpa-84	La milpa-134	El campamento-46
El pozo esperanza-33	El genizaro 2004-85	El puente-135	El pozo pimienta-47
El pozo esperanza-34	La milpa-86	El puente-136	La escoba-48
El guarumo-35	El guabo-87	El puente-137	El campamento-49
El guarumo-36	El guabo-88	La milpa-138	La escoba-50
El guarumo-37	El nancite-89	La milpa-139	El campamento-51
El coyote-38	El nancite-90	La milpa-140	El campamento-52
El guarumo-39	El nancite-91	El puente-141	El pozo pimienta-53
El coyote-40	El nancite-92	El puente-143	El pozo pimienta-54
El pozo esperanza-41	El nancite-93	El puente-144	El pozo pimienta-55
El nancite-42	El nancite-94	El puente-145	La escoba-56
El pozo esperanza-43	El genizaro 2004-95	El puente-146	El pozo pimienta-57
El pozo esperanza-44	La milpa-96	El puente-147	El pozo pimienta-58
El pozo esperanza-45	El nancite-97	El puente-148	La escoba-59
El pozo esperanza-46	El comando-98	La milpa-149	La escoba-60
El pozo esperanza-47	La milpa-99	La cruz-2	La escoba-61
El cuzuco-48	La milpa-100	La cruz-3	La escoba-62
El nancite-53	La milpa-101	El Chaguite-4	La escoba-63
El nancite-54	La milpa-102	El Chaguite-5	La escoba-64
El comando-55	La milpa-103	El Chaguite-7	El esfuerzo-294

El nancite-56	La milpa-104	El Chaguite-8	El esfuerzo-295
El comando-57	El lagarto -105	La cruz-9	El esfuerzo-296
El nancite-58	La milpa-106	La horqueta-10	Sitio 2-321
El nancite-59	La milpa-107	La horqueta-11	Sitio 2-354
El guabo-60	La milpa-108	La cruz-12	Sitio 2-365
El nancite-61	La milpa-109	La cruz-13	Sitio 2-366
El nancite-62	La milpa-110	La horqueta-14	Sitio 2-367
El guabo-63	La milpa-111	El dos-212	Sitio 2-370
La escoba-65	El Mojòn-130	El dos-213	Pozo-1
El porton-66	El Mojòn-132	El dos-214	Pozo-2
El pozo pimienta-67	El Mojòn-133	El cuido-215	Pozo-3
La escoba-68	El Mojòn-134	El sitio-216	Pozo-5
El porton-69	Frontera-139	El uno-217	Pozo-6
El pozo pimienta-70	El Mojòn-140	El uno-218	Pozo-7
La escoba-71	El Mojòn-143	El uno-220	Pozo-8
El pozo pimienta-72	Frontera-144	El dos-222	Pozo-9
La escoba-73	El Rincòn-145	El uno-223	Pozo-11
La escoba-74	El Rincòn-146	El uno-224	Pozo-12
La escoba-75	El Mojòn-149	El cuido-225	Pozo-13
La escoba-76	El Mojòn-151	El uno-228	Pozo-14
La escoba-77	El Mojòn-152	Frontera-229	Pozo-15
El porton-78	La presa-159	El uno-230	Jabalina-18
El porton-79	La presa-160	El cuido-231	Jabalina-19
Frontera-80	La presa-161	El cuido-234	Jabalina-20
Frontera-82	La presa-162	El uno-235	Jabalina-21
Frontera-83	El sitio-164	El cuido-236	Jabalina-23
Frontera-86	La presa-165	El uno-237	Jabalina-24
Frontera-88	La presa-166	El uno-242	Jabalina-25
Frontera-89	La presa-168	El miralagos-243	Jabalina-26
Frontera-90	El dos-169	El uno-244	Jabalina-28
Frontera-91	La presa-170	El cuido-245	Jabalina-29
Frontera-92	La presa-171	El uno-246	Jabalina-30
Frontera-93	La presa-172	El miralagos-248	Jabalina-31
Frontera-97	La presa-173	El uno-249	Jabalina-32
Frontera-98	El sitio-174	El cuido-250	Jabalina-33
La presa-103	El sitio-175	El cuido-251	Jabalina-35
Frontera-104	El sitio-176	El cuido-252	Jabalina-36
Frontera-106	La presa-177	El uno-256	Jabalina-37
el sitio-107	La presa-178	El uno-258	Jabalina-38
Frontera-109	El sitio-180	El uno-260	Jabalina-39
Frontera-111	La presa-181	El uno-261	Jabalina-40

El Mojòn-114	La presa-182	El cuido-263	Jabalina-41
El miralagos-117	La presa-183	El cuido-264	Jabalina-42
El miralagos-118	El dos-190	El cuido-271	Jabalina-43
El miralagos-119	El dos-193	El cuido-275	Jabalina-46
El Rincòn-120	El dos-195	El Mojòn-277	Jabalina-47
Frontera-121	El dos-196	El sitio-279	Ceiba 3-213
El miralagos-122	El cuido-198	Frontera-287	Ceiba 3-214
El miralagos-123	El dos-201	El Rótulo-288	Ceiba 3-215
El Mojòn-124	El dos-203	El Rótulo-289	Ceiba 3-216
El miralagos-125	El dos-206	El esfuerzo-290	Ceiba 3-217
El miralagos-126	El dos-207	El esfuerzo-291	Ceiba 3-218
El miralagos-127	El dos-208	El esfuerzo-292	Ceiba 3-219
El miralagos-128	El dos-209	El esfuerzo-293	Ceiba 3-220
El miralagos-129	El uno-211	Rancho-164	Ceiba 3-221
Jabalina-48	Majaste-105	Rancho-165	Ceiba 3-222
Jabalina-49	Majaste-106	Rancho-166	Ceiba 3-223
Jabalina-50	Majaste-109	Rancho-168	Ceiba 3-224
Jabalina-51	Majaste-110	Rancho-169	Ceiba 3-225
Jabalina-52	Majastito-111	Rancho-170	Ceiba 3-226
Jabalina-53	Majastito-113	Rancho-171	Ceiba 3-227
Jabalina-54	Majastito-114	Ceiba 1-173	Corral-228
Jabalina-55	Majastito-115	Ceiba 1-174	Corral-229
Jabalina-56	Majastito-116	Ceiba 1-175	Corral-230
Jabalina-58	Majastito-117	Ceiba 1-176	Corral-231
Jabalinita-62	Majastito-118	Ceiba 1-177	Corral-232
Jabalinita-63	Majastito-120	Ceiba 1-178	Corral-233
Jabalinita-64	Majastito-121	Ceiba 1-179	Corral-234
Jabalinita-65	Majastito-122	Ceiba 1-180	Corral-235
Jabalinita-66	Majastito-123	Ceiba 1-181	Corral-236
Jabalinita-67	Majastito-124	Ceiba 1-182	Corral-237
Jabalinita-68	Majastito-125	Ceiba 1-183	Corral-238
Jabalinita-69	Majastito-126	Ceiba 1-184	Corral-239
Jabalinita-70	Majastito-127	Ceiba 1-185	Corral-240
Jabalinita-71	Rancho-128	Ceiba 1-186	Corral-241
Jabalinita-72	Rancho-129	Ceiba 1-187	Corral-242
Jabalinita-73	Rancho-130	Ceiba 1-188	Corral-243
Jabalinita-74	Rancho-132	Ceiba 1-189	Corral-244
Jabalinita-76	Rancho-133	Ceiba 1-190	Corral-245
Jabalinita-77	Rancho-135	Ceiba 1-191	Corral-246
Majaste-81	Rancho-136	Ceiba 2-192	Corral-247
Majaste-82	Rancho-137	Ceiba 2-193	Corral-248

Majaste-83	Rancho-138	Ceiba 2-194	Corral-250
Majaste-84	Rancho-140	Ceiba 2-195	Escondidito-251
Majaste-85	Rancho-141	Ceiba 2-196	Escondidito-253
Majaste-86	Rancho-143	Ceiba 2-197	Escondidito-255
Majaste-87	Rancho-144	Ceiba 2-198	Escondidito-256
Majaste-88	Rancho-148	Ceiba 2-199	Escondidito-257
Majaste-89	Rancho-149	Ceiba 2-200	Escondidito-258
Majaste-91	Rancho-150	Ceiba 2-201	Escondidito-260
Majaste-92	Rancho-151	Ceiba 2-202	Escondidito-261
Majaste-93	Rancho-152	Ceiba 2-203	Escondido-263
Majaste-94	Rancho-153	Ceiba 2-204	Escondido-264
Majaste-95	Rancho-155	Ceiba 2-205	Escondido-395
Majaste-97	Rancho-156	Ceiba 2-206	Escondido-396
Majaste-98	Rancho-157	Ceiba 3-207	
Majaste-99	Rancho-158	Ceiba 3-208	
Majaste-100	Rancho-159	Ceiba 3-209	
Majaste-101	Rancho-160	Ceiba 3-210	
Majaste-102	Rancho-161	Ceiba 3-211	
Majaste-103	Rancho-162	Ceiba 3-212	
Majaste-104	Rancho-163	La escoba-376	
Escondido-265	Genizaro-326	El Porton-377	
Escondido-267	Jabalina 2-328	El campamento-378	
Escondido-268	Jabalina 2-329	El pozo pimienta-379	
Escondido-269	Jabalina 2-330	El Rótulo-380	
Escondido-270	Jabalina 2-331	El Chaguite-381	
Escondido-271	Jabalina 2-332	El pozo pimienta-382	
Escondido-273	Jabalina 2-333	La horqueta-383	
Escondido-275	Jabalinita 2-334	El cuido-384	
Escondido-276	Jabalinita 2-335	El uno-385	
Escondido-278	Jabalinita 2-336	El uno-387	
Escondido-279	Majaste 2-337	El dos-388	
Escondido-281	Majaste 2-338	La presa-389	
Escondido-284	Majaste 2-339	La presa-390	
Escondido-285	Majaste 2-340	La presa-391	
Escondido-286	Majaste 2-341	El Mojòn-392	
Escondido-287	Majaste 2-342	Jabalina-382	
Genizaro-288	Patio-344	Jabalina-383	
Genizaro-289	Patio-345	Jabalinita-384	
Genizaro-290	Patio-346	Majastito-385	
Genizaro-291	Patio-347	Majastito-386	
Genizaro-292	Patio-349	Rancho-387	

Genizaro-293	Patio-350	Jabalinita-388
Genizaro-294	Patio-352	Majastito-389
Genizaro-295	Patio-353	Rancho-390
Genizaro-296	Patio-355	Ceiba 2-391
Genizaro-297	Patio-356	Ceiba 3-392
Genizaro-299	Patio-359	Ceiba 3-393
Genizaro-300	Patio-361	Escondido-394
Genizaro-301	Patio-363	Genizaro-397
Genizaro-302	Patio-365	Genizaro-398
Genizaro-303	Patio-366	El guabo-400
Genizaro-304	Patio-367	La milpa-401
Genizaro-305	Patio-368	El guabo-402
Genizaro-306	Patio-369	El nancite-403
Genizaro-307	Patio-370	La milpa-404
Genizaro-308	Patio-371	El comando-405
Genizaro-309	Patio-372	La milpa-406
Genizaro-310	Patio-373	El guabo-407
Genizaro-311	Patio-374	El Chaguite-15
Genizaro-312	Patio-375	La cruz-16
Genizaro-313	Patio-376	La horqueta-17
Genizaro-314	Patio-377	El Chaguite-18
Genizaro-315	Patio-378	La horqueta-19
Genizaro-317	Patio-379	La horqueta-20
Genizaro-319	Patio-380	La horqueta-21
Genizaro-322	Patio-381	El Chaguite-22
Genizaro-325	La milpa-112	El Chaguite-23

ANNEX # 3 PERMANENT SAMPLE LOCATION

SAMPLE PLOT ID	LAT / LONG	SAMPLE PLOT ID	LAT / LONG
La laguna-1	11°05'3" , -84°32'33"	El guabo-63	11°05'33" , -84°32'39"
Las trozas-2	11°05'4" , -84°32'18"	El nancite-64	11°05'33" , -84°32'27"
Las trozas-4	11°05'7" , -84°32'16"	El nancite-65	11°05'34" , -84°32'36"
Las trozas-7	11°05'9" , -84°32'16"	El guabo-66	11°05'35" , -84°32'52"
La laguna-8	11°05'10" , -84°32'37"	El nancite-67	11°05'35" , -84°32'33"
La laguna-14	11°05'12" , -84°32'32"	El comando-68	11°05'35" , -84°32'18"
Las trozas-15	11°05'13" , -84°32'17"	El guabo-69	11°05'36" , -84°32'44"
La laguna-16	11°05'13" , -84°32'32"	El guabo-70	11°05'36" , -84°32'48"
Las trozas-17	11°05'13" , -84°32'23"	El comando-71	11°05'38" , -84°32'17"
Las trozas-18	11°05'13" , -84°32'19"	El nancite-73	11°05'39" , -84°32'24"
Las trozas-19	11°05'14" , -84°32'30"	La milpa-74	11°05'40" , -84°32'51"
Las trozas-20	11°05'14" , -84°32'29"	La milpa-75	11°05'40" , -84°32'48"
Las trozas-21	11°05'15" , -84°32'29"	El genizaro 2004-76	11°05'41" , -84°33'3"
Las trozas-22	11°05'15" , -84°32'17"	La milpa-77	11°05'41" , -84°32'48"
Las trozas-23	11°05'16" , -84°32'29"	El guabo-78	11°05'41" , -84°32'42"
Las trozas-24	11°05'16" , -84°32'22"	El guabo-79	11°05'41" , -84°32'38"
Las trozas-25	11°05'18" , -84°32'33"	El nancite-80	11°05'41" , -84°32'33"
El pozo esperanza-26	11°05'18" , -84°32'42"	El nancite-81	11°05'41" , -84°32'24"
El pozo esperanza-27	11°05'19" , -84°32'45"	El comando-82	11°05'41" , -84°32'18"
El pozo esperanza-29	11°05'20" , -84°32'45"	El genizaro 2004-83	11°05'46" , -84°33'4"
El pozo esperanza-33	11°05'22" , -84°32'44"	La milpa-84	11°05'42" , -84°32'51"
El pozo esperanza-34	11°05'24" , -84°32'44"	El genizaro 2004-85	11°05'42" , -84°32'59"
El guarumo-35	11°05'24" , -84°32'34"	La milpa-86	11°05'42" , -84°32'55"
El guarumo-36	11°05'25" , -84°32'29"	El guabo-87	11°05'42" , -84°32'44"
El guarumo-37	11°05'25" , -84°32'28"	El guabo-88	11°05'42" , -84°32'39"
El coyote-38	11°05'26" , -84°32'41"	El nancite-89	11°05'42" , -84°32'31"
El guarumo-39	11°05'26" , -84°32'31"	El nancite-90	11°05'42" , -84°32'24"
El coyote-40	11°05'27" , -84°32'43"	El nancite-91	11°05'42" , -84°32'23"
El pozo esperanza-41	11°05'29" , -84°32'53"	El nancite-92	11°05'43" , -84°32'33"
El nancite-42	11°05'29" , -84°32'29"	El nancite-93	11°05'43" , -84°32'28"
El pozo esperanza-43	11°05'32" , -84°32'53"	El nancite-94	11°05'44" , -84°32'22"
El pozo esperanza-44	11°05'32" , -84°32'53"	El genizaro 2004-95	11°05'46" , -84°33'9"
El pozo esperanza-45	11°05'32" , -84°32'58"	La milpa-96	11°05'45" , -84°32'44"
El pozo esperanza-46	11°05'32" , -84°32'53"	El nancite-97	11°05'45" , -84°32'33"
El pozo esperanza-47	11°05'34" , -84°32'53"	El comando-98	11°05'45" , -84°32'18"
El cuzuco-48	11°05'5" , -84°32'18"	La milpa-99	11°05'46" , -84°32'45"

El nancite-53	11°05'29" , -84°32'33"	La milpa-100	11°05'48" , -84°32'35"
El nancite-54	11°05'29" , -84°32'26"	La milpa-101	11°05'48" , -84°32'48"
El comando-55	11°05'29" , -84°32'18"	La milpa-102	11°05'48" , -84°32'42"
El nancite-56	11°05'29" , -84°32'25"	La milpa-103	11°05'48" , -84°32'20"
El comando-57	11°05'29" , -84°32'23"	La milpa-104	11°05'48" , -84°32'17"
El nancite-58	11°05'31" , -84°32'36"	El lagarto -105	11°05'49" , -84°33'3"
El nancite-59	11°05'31" , -84°32'33"	La milpa-106	11°05'49" , -84°32'50"
El guabo-60	11°05'32" , -84°32'43"	La milpa-107	11°05'49" , -84°32'42"
El nancite-61	11°05'32" , -84°32'33"	La milpa-108	11°05'49" , -84°32'40"
El nancite-62	11°05'32" , -84°32'30"	La milpa-109	11°05'49" , -84°32'20"
La milpa-110	11°05'50" , -84°32'52"	La cruz-13	11°11'43," , -85°37'27,"
La milpa-111	11°05'50" , -84°32'22"	La horqueta-14	11°11'44," , -85°37'48,"
La milpa-112	11°05'51" , -84°32'53"	El Chaguite-15	11°11'46," , -85°37'40,"
El lagarto-113	11°05'51" , -84°33'6"	La cruz-16	11°11'47," , -85°37'30,"
La milpa-115	11°05'51" , -84°32'55"	La horqueta-17	11°11'47," , -85°37'56,"
La milpa-116	11°05'52" , -84°32'45"	El Chaguite-18	11°11'47," , -85°37'39,"
La milpa-117	11°05'50" , -84°32'44"	La horqueta-19	11°11'48," , -85°38'0,6"
La milpa-118	11°05'52" , -84°32'21"	La horqueta-20	11°11'48," , -85°37'59,"
El lagarto-119	11°05'52" , -84°33'7"	La horqueta-21	11°11'48," , -85°37'48,"
La milpa-120	11°05'52" , -84°32'37"	El Chaguite-22	11°11'49," , -85°37'41,"
La milpa-121	11°05'52" , -84°32'35"	El Chaguite-23	11°11'49," , -85°37'40,"
La milpa-123	11°05'53" , -84°32'48"	El Chaguite-24	11°11'48," , -85°37'37,"
La milpa-124	11°05'53" , -84°32'38"	La horqueta-25	11°11'50," , -85°38'2,9"
La milpa-125	11°05'54" , -84°32'35"	La horqueta-26	11°11'42," , -85°37'48,"
El puente-126	11°05'55" , -84°32'49"	El Chaguite-27	11°11'51," , -85°37'37,"
La milpa-127	11°05'55" , -84°32'38"	La cruz-28	11°11'50," , -85°37'29,"
La milpa-128	11°05'55" , -84°32'33"	La cruz-29	11°11'50," , -85°37'28,"
La milpa-129	11°05'55" , -84°32'28"	La cruz-30	11°11'51," , -85°37'25,"
El puente-130	11°05'56" , -84°33'3"	La cruz-31	11°11'52," , -85°37'22,"
La milpa-131	11°05'56" , -84°32'21"	La cruz-33	11°11'53," , -85°37'26,"
El puente-132	11°05'56" , -84°33'2"	La cruz-34	11°11'54," , -85°37'27,"
El puente-133	11°05'56" , -84°32'47"	La cruz-35	11°11'54," , -85°37'23,"
La milpa-134	11°05'56" , -84°32'29"	La cruz-36	11°11'54," , -85°37'20,"
El puente-135	11°05'57" , -84°32'58"	El Chaguite-38	11°11'54," , -85°37'34,"
El puente-136	11°05'57" , -84°32'58"	La cruz-39	11°11'55," , -85°37'24,"
El puente-137	11°05'57" , -84°32'50"	La escoba-40	11°12'7,1" , -85°38'13,"
La milpa-138	11°05'57" , -84°32'34"	El campamento-42	11°11'55," , -85°38'1,0"
La milpa-139	11°05'57" , -84°32'29"	La cruz-43	11°11'56," , -85°37'25,"
La milpa-140	11°05'57" , -84°32'28"	La cruz-44	11°11'56," , -85°37'22,"
El puente-141	11°05'58" , -84°33'1"	La cruz-45	11°11'56," , -85°37'19,"
El puente-143	11°05'58" , -84°32'43"	El campamento-46	11°12'4,6" , -85°37'56,"

El puente-144	11°05'58" , -84°32'41"	El pozo pimienta-47	11°11'58," , -85°37'40,"
El puente-145	11°05'60" , -84°32'57"	La escoba-48	11°12'1,6" , -85°38'7,7"
El puente-146	11°05'59" , -84°32'37"	El campamento-49	11°12'3,2" , -85°37'57,"
El puente-147	11°05'60" , -84°32'45"	La escoba-50	11°12'6,4" , -85°38'12,"
El puente-148	11°05'60" , -84°32'54"	El campamento-51	11°12'4,6" , -85°37'55,"
La milpa-149	11°05'60" , -84°32'25"	El campamento-52	11°12'5,3" , -85°37'43,"
La cruz-2	11°11'36," , -85°37'31,"	El pozo pimienta-53	11°12'4,9" , -85°37'35,"
La cruz-3	11°11'36," , -85°37'30,"	El pozo pimienta-54	11°12'5,4" , -85°37'32,"
El Chaguite-4	11°11'37," , -85°37'46,"	El pozo pimienta-55	11°12'6,7" , -85°37'20,"
El Chaguite-5	11°11'45," , -85°37'41,"	La escoba-56	11°12'13," , -85°38'1,2"
El Chaguite-7	11°11'40," , -85°37'42,"	El pozo pimienta-57	11°12'7,8" , -85°37'30,"
El Chaguite-8	11°11'40," , -85°37'41,"	El pozo pimienta-58	11°12'7,8" , -85°37'22,"
La cruz-9	11°11'40," , -85°37'35,"	La escoba-59	11°12'8,8" , -85°38'11,"
La horqueta-10	11°11'41," , -85°37'49,"	La escoba-60	11°12'8,9" , -85°38'6,3"
La horqueta-11	11°11'41," , -85°37'48,"	La escoba-61	11°12'8,4" , -85°37'59,"
La cruz-12	11°11'42," , -85°37'32,"	La escoba-62	11°12'9,1" , -85°38'7,4"
La escoba-63	11°12'9,5" , -85°38'3,6"	El miralagos-128	11°10'27," , -85°38'14,"
La escoba-64	11°12'10," , -85°37'58,"	El miralagos-129	11°10'27," , -85°38'31,"
La escoba-65	11°12'13," , -85°38'0,2"	El Mojòn-130	11°10'29," , -85°38'9,8"
El porton-66	11°12'10," , -85°37'49,"	El Mojòn-132	11°10'33," , -85°38'7,0"
El pozo pimienta-67	11°12'9,6" , -85°37'25,"	El Mojòn-133	11°10'34," , -85°38'9,9"
La escoba-68	11°12'10," , -85°38'13,"	El Mojòn-134	11°10'34," , -85°38'5,2"
El porton-69	11°12'11," , -85°37'50,"	Frontera-139	11°10'18," , -85°38'30,"
El pozo pimienta-70	11°12'10," , -85°37'24,"	El Mojòn-140	11°10'39," , -85°38'10,"
La escoba-71	11°12'11," , -85°38'11,"	El Mojòn-143	11°10'40," , -85°38'12,"
El pozo pimienta-72	11°12'11," , -85°37'41,"	Frontera-144	11°10'14," , -85°38'21,"
La escoba-73	11°12'12," , -85°38'4,3"	El Rincòn-145	11°10'24," , -85°38'36,"
La escoba-74	11°12'12," , -85°38'2,6"	El Rincòn-146	11°10'25," , -85°38'34,"
La escoba-75	11°12'13," , -85°37'59,"	El Mojòn-149	11°10'46," , -85°38'4,0"
La escoba-76	11°12'14," , -85°38'4,0"	El Mojòn-151	11°10'47," , -85°38'3,4"
La escoba-77	11°12'15," , -85°38'1,6"	El Mojòn-152	11°10'48," , -85°38'0,1"
El porton-78	11°12'18," , -85°37'56,"	La presa-159	11°10'53," , -85°38'9,9"
El porton-79	11°12'18," , -85°37'55,"	La presa-160	11°10'53," , -85°38'15,"
Frontera-80	11°10'1,2" , -85°38'27,"	La presa-161	11°10'54," , -85°38'5,4"
Frontera-82	11°10'2,7" , -85°38'37,"	La presa-162	11°10'54," , -85°37'56,"
Frontera-83	11°10'3,2" , -85°38'38,"	El sitio-164	11°10'56," , -85°38'21,"
Frontera-86	11°10'5,2" , -85°38'37,"	La presa-165	11°10'55," , -85°38'10,"
Frontera-88	11°10'6,8" , -85°38'27,"	La presa-166	11°10'56," , -85°38'1,2"
Frontera-89	11°10'6,7" , -85°38'46,"	La presa-168	11°10'56," , -85°38'16,"
Frontera-90	11°10'7,1" , -85°38'24,"	El dos-169	11°11'3,0" , -85°38'1,8"
Frontera-91	11°10'7,9" , -85°38'45,"	La presa-170	11°10'56," , -85°38'8,3"

Frontera-92	11°10'8,6" , -85°38'44,"	La presa-171	11°10'57," , -85°38'2,3"
Frontera-93	11°10'8,5" , -85°38'39,"	La presa-172	11°10'57," , -85°38'10,"
Frontera-97	11°10'10," , -85°38'32,"	La presa-173	11°10'57," , -85°38'3,6"
Frontera-98	11°10'11," , -85°38'42,"	El sitio-174	11°10'59," , -85°38'19,"
La presa-103	11°10'55," , -85°37'59,"	El sitio-175	11°10'58," , -85°38'18,"
Frontera-104	11°10'13," , -85°38'22,"	El sitio-176	11°10'58," , -85°38'22,"
Frontera-106	11°10'14," , -85°38'30,"	La presa-177	11°10'58," , -85°38'4,2"
el sitio-107	11°10'58," , -85°38'21,"	La presa-178	11°10'58," , -85°38'0,0"
Frontera-109	11°10'15," , -85°38'20,"	El sitio-180	11°10'59," , -85°38'21,"
Frontera-111	11°10'16," , -85°38'28,"	La presa-181	11°10'59," , -85°38'15"
El Mojòn-114	11°10'49," , -85°38'9,9"	La presa-182	11°11'0,3" , -85°38'13,"
El miralagos-117	11°10'20," , -85°38'16,"	La presa-183	11°11'0,2" , -85°38'11,"
El miralagos-118	11°10'22," , -85°38'20,"	El dos-190	11°11'3,9" , -85°38'5,4"
El miralagos-119	11°10'22," , -85°38'19,"	El dos-193	11°11'4,5" , -85°38'8,3"
El Rincòn-120	11°10'24," , -85°38'37,"	El dos-195	11°11'5,2" , -85°37'57,"
Frontera-121	11°10'7,1" , -85°38'31,"	El dos-196	11°11'5,8" , -85°37'56,"
El miralagos-122	11°10'24," , -85°38'24,"	El cuido-198	11°11'21," , -85°37'43,"
El miralagos-123	11°10'24," , -85°38'18,"	El dos-201	11°11'8,5" , -85°37'55,"
El Mojòn-124	11°10'39," , -85°38'8,7"	El dos-203	11°11'10," , -85°38'6,6"
El miralagos-125	11°10'26," , -85°38'28,"	El dos-206	11°11'10," , -85°38'0,7"
El miralagos-126	11°10'26," , -85°38'17,"	El dos-207	11°11'10," , -85°37'59,"
El miralagos-127	11°10'27," , -85°38'20,"	El dos-208	11°11'10," , -85°37'58,"
El dos-209	11°11'11," , -85°37'47,"	El esfuerzo-292	11°12'20," , -85°38'0,4"
El uno-211	11°11'12," , -85°38'11,"	El esfuerzo-293	11°12'21," , -85°38'0,6"
El dos-212	11°11'13," , -85°37'57,"	El esfuerzo-294	11°12'27," , -85°37'55,"
El dos-213	11°11'12," , -85°37'54,"	El esfuerzo-295	11°12'25," , -85°37'54,"
El dos-214	11°11'12," , -85°37'53,"	El esfuerzo-296	11°12'28," , -85°37'52,"
El cuido-215	11°11'27," , -85°37'47,"	Sitio 2-321	11°10'26," , -85°38'38,"
El sitio-216	11°11'15," , -85°38'21,"	Sitio 2-354	11°11'0,9" , -85°38'21,"
El uno-217	11°11'14," , -85°38'4,1"	Sitio 2-365	11°11'42," , -85°38'3,5"
El uno-218	11°11'15," , -85°38'0,1"	Sitio 2-366	11°11'37," , -85°37'55,"
El uno-220	11°11'16," , -85°38'1,6"	Sitio 2-367	11°11'36," , -85°37'54,"
El dos-222	11°11'17," , -85°37'46,"	Sitio 2-370	11°11'37," , -85°37'51,"
El uno-223	11°11'19," , -85°38'12,"	Pozo-1	11°14'14" , -85°40'23"
El uno-224	11°11'19," , -85°37'58,"	Pozo-2	11°14'14" , -85°40'26"
El cuido-225	11°11'20," , -85°37'39,"	Pozo-3	11°14'17" , -85°40'26"
El uno-228	11°11'20," , -85°38'5,9"	Pozo-5	11°14'17" , -85°40'20"
Frontera-229	11°10'18," , -85°38'29,"	Pozo-6	11°14'20" , -85°40'22"
El uno-230	11°11'21," , -85°37'54,"	Pozo-7	11°14'26" , -85°40'30"
El cuido-231	11°11'21," , -85°37'46,"	Pozo-8	11°14'27" , -85°40'28"
El cuido-234	11°11'23," , -85°37'41,"	Pozo-9	11°14'24" , -85°40'26"

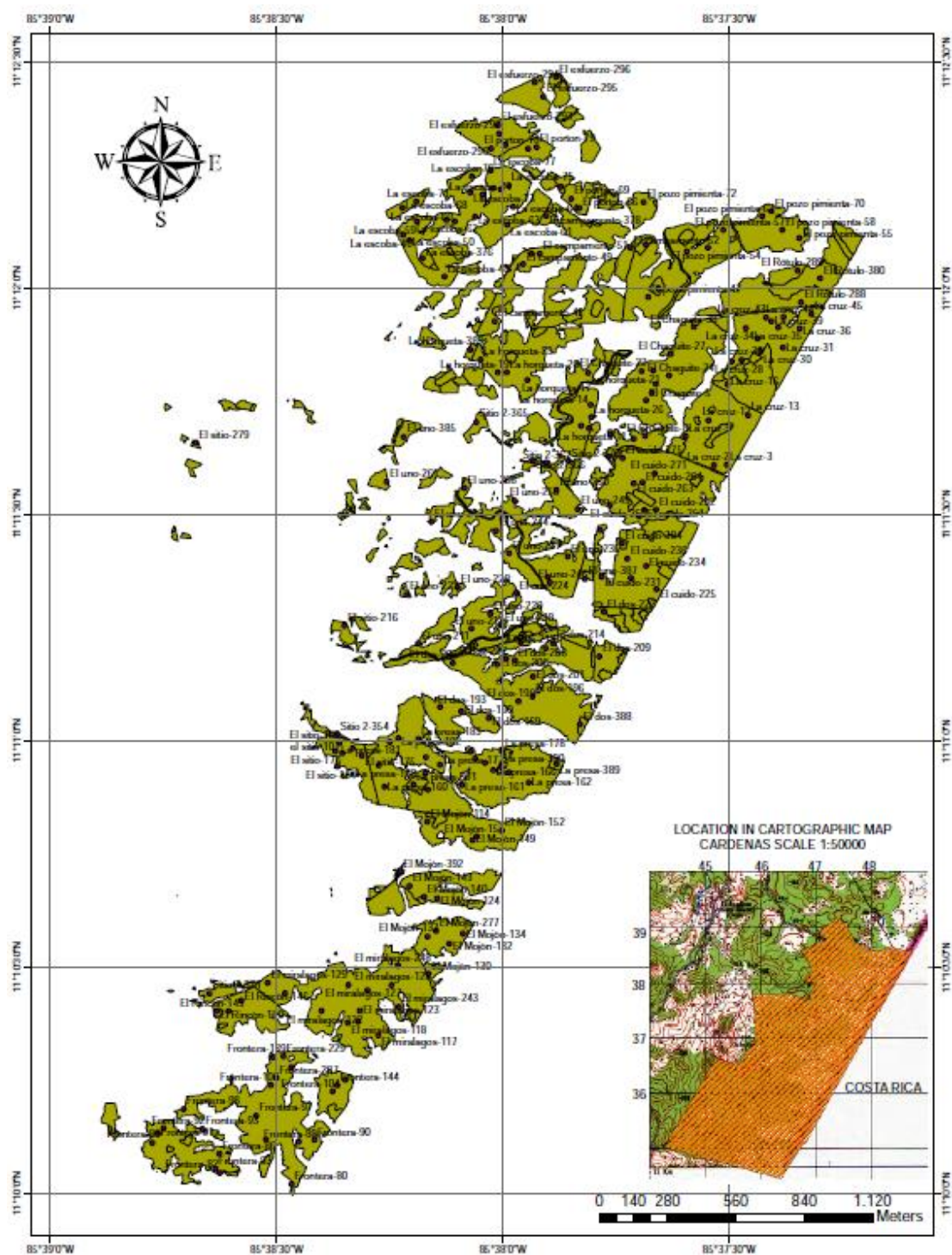
El uno-235	11°11'24," , -85°37'51,"	Pozo-11	11°14'19" , -85°40'15"
El cuido-236	11°11'24," , -85°37'43,"	Pozo-12	11°14'21" , -85°40'18"
El uno-237	11°11'24," , -85°37'59,"	Pozo-13	11°14'23" , -85°40'22"
El uno-242	11°11'29," , -85°38'9,4"	Pozo-14	11°14'15" , -85°40'18"
El miralagos-243	11°10'24," , -85°38'13,"	Pozo-15	11°14'25" , -85°40'33"
El uno-244	11°11'27," , -85°38'0,8"	Jabalina-18	11°14'2" , -85°41'21"
El cuido-245	11°11'29," , -85°37'41,"	Jabalina-19	11°14'4" , -85°41'19"
El uno-246	11°11'21," , -85°37'53,"	Jabalina-20	11°14'6" , -85°41'6"
El miralagos-248	11°10'30," , -85°38'13,"	Jabalina-21	11°14'6" , -85°41'4"
El uno-249	11°11'30," , -85°37'50,"	Jabalina-23	11°14'20" , -85°40'46"
El cuido-250	11°11'31," , -85°37'45,"	Jabalina-24	11°14'8" , -85°41'8"
El cuido-251	11°11'30," , -85°37'41,"	Jabalina-25	11°14'10" , -85°41'20"
El cuido-252	11°11'30," , -85°37'39,"	Jabalina-26	11°14'10" , -85°41'1"
El uno-256	11°11'31," , -85°37'58,"	Jabalina-28	11°14'12" , -85°40'58"
El uno-258	11°11'33," , -85°38'5,0"	Jabalina-29	11°14'5" , -85°41'13"
El uno-260	11°11'33," , -85°37'52,"	Jabalina-30	11°14'13" , -85°41'0"
El uno-261	11°11'34," , -85°38'15,"	Jabalina-31	11°14'16" , -85°40'59"
El cuido-263	11°11'34," , -85°37'42,"	Jabalina-32	11°14'13" , -85°40'58"
El cuido-264	11°11'34," , -85°37'41,"	Jabalina-33	11°14'14" , -85°41'27"
El cuido-271	11°11'35," , -85°37'39,"	Jabalina-35	11°14'15" , -85°40'50"
El cuido-275	11°11'37," , -85°37'44,"	Jabalina-36	11°14'18" , -85°41'23"
El Mojòn-277	11°10'34," , -85°38'8,8"	Jabalina-37	11°14'19" , -85°41'19"
El sitio-279	11°11'39," , -85°38'40,"	Jabalina-38	11°14'20" , -85°41'20"
Frontera-287	11°10'15," , -85°38'30,"	Jabalina-39	11°14'23" , -85°41'18"
El Rótulo-288	11°11'58," , -85°37'20,"	Jabalina-40	11°14'19" , -85°41'15"
El Rótulo-289	11°12'2,4" , -85°37'20,"	Jabalina-41	11°14'20" , -85°41'13"
El esfuerzo-290	11°12'18," , -85°38'1,5"	Jabalina-42	11°14'19" , -85°41'12"
El esfuerzo-291	11°12'19," , -85°37'59,"	Jabalina-43	11°14'21" , -85°41'7"
Jabalina-46	11°14'21" , -85°41'16"	Majaste-103	11°14'36" , -85°41'12"
Jabalina-47	11°14'19" , -85°40'49"	Majaste-104	11°14'38" , -85°41'26"
Jabalina-48	11°14'21" , -85°41'12"	Majaste-105	11°14'40" , -85°41'11"
Jabalina-49	11°14'21" , -85°40'39"	Majaste-106	11°14'41" , -85°41'11"
Jabalina-50	11°14'22" , -85°41'15"	Majaste-109	11°14'34" , -85°41'36"
Jabalina-51	11°14'22" , -85°41'4"	Majaste-110	11°14'39" , -85°41'8"
Jabalina-52	11°14'23" , -85°41'16"	Majastito-111	11°14'35" , -85°41'47"
Jabalina-53	11°14'24" , -85°41'8"	Majastito-113	11°14'42" , -85°41'52"
Jabalina-54	11°14'23" , -85°41'5"	Majastito-114	11°14'45" , -85°41'39"
Jabalina-55	11°14'24" , -85°41'12"	Majastito-115	11°14'35" , -85°41'38"
Jabalina-56	11°14'25" , -85°40'57"	Majastito-116	11°14'30" , -85°41'41"
Jabalina-58	11°14'17" , -85°40'45"	Majastito-117	11°14'39" , -85°41'35"
Jabalinita-62	11°14'39" , -85°41'4"	Majastito-118	11°14'39" , -85°41'43"

Jabalinita-63	11°14'27" , -85°41'9"	Majastito-120	11°14'40" , -85°41'38"
Jabalinita-64	11°14'28" , -85°41'1"	Majastito-121	11°14'42" , -85°41'41"
Jabalinita-65	11°14'27" , -85°40'44"	Majastito-122	11°14'44" , -85°41'40"
Jabalinita-66	11°14'27" , -85°41'7"	Majastito-123	11°14'45" , -85°41'50"
Jabalinita-67	11°14'31" , -85°40'59"	Majastito-124	11°14'44" , -85°41'48"
Jabalinita-68	11°14'28" , -85°41'6"	Majastito-125	11°14'44" , -85°41'44"
Jabalinita-69	11°14'29" , -85°41'7"	Majastito-126	11°14'46" , -85°41'49"
Jabalinita-70	11°14'30" , -85°40'47"	Majastito-127	11°14'47" , -85°41'48"
Jabalinita-71	11°14'31" , -85°40'45"	Rancho-128	11°14'48" , -85°41'26"
Jabalinita-72	11°14'33" , -85°40'57"	Rancho-129	11°14'49" , -85°41'42"
Jabalinita-73	11°14'33" , -85°41'1"	Rancho-130	11°14'51" , -85°41'40"
Jabalinita-74	11°14'32" , -85°40'53"	Rancho-132	11°15'10" , -85°41'33"
Jabalinita-76	11°14'37" , -85°41'5"	Rancho-133	11°14'51" , -85°41'7"
Jabalinita-77	11°14'37" , -85°40'60"	Rancho-135	11°15'2" , -85°41'35"
Majaste-81	11°14'28" , -85°41'31"	Rancho-136	11°15'8" , -85°41'27"
Majaste-82	11°14'32" , -85°41'26"	Rancho-137	11°14'56" , -85°41'40"
Majaste-83	11°14'34" , -85°41'26"	Rancho-138	11°14'44" , -85°41'13"
Majaste-84	11°14'32" , -85°41'19"	Rancho-140	11°14'43" , -85°41'7"
Majaste-85	11°14'38" , -85°41'12"	Rancho-141	11°14'45" , -85°41'25"
Majaste-86	11°14'34" , -85°41'16"	Rancho-143	11°14'58" , -85°41'10"
Majaste-87	11°14'37" , -85°41'32"	Rancho-144	11°14'48" , -85°41'8"
Majaste-88	11°14'38" , -85°41'29"	Rancho-148	11°14'51" , -85°41'25"
Majaste-89	11°14'31" , -85°41'33"	Rancho-149	11°14'55" , -85°41'35"
Majaste-91	11°14'39" , -85°41'17"	Rancho-150	11°14'54" , -85°41'33"
Majaste-92	11°14'39" , -85°41'32"	Rancho-151	11°14'54" , -85°41'25"
Majaste-93	11°14'41" , -85°41'24"	Rancho-152	11°14'48" , -85°41'36"
Majaste-94	11°14'43" , -85°41'30"	Rancho-153	11°14'57" , -85°41'32"
Majaste-95	11°14'41" , -85°41'28"	Rancho-155	11°14'59" , -85°41'37"
Majaste-97	11°14'17" , -85°41'33"	Rancho-156	11°14'59" , -85°41'28"
Majaste-98	11°14'22" , -85°41'22"	Rancho-157	11°15'0" , -85°41'27"
Majaste-99	11°14'27" , -85°41'29"	Rancho-158	11°15'5" , -85°41'18"
Majaste-100	11°14'28" , -85°41'17"	Rancho-159	11°14'60" , -85°41'32"
Majaste-101	11°14'35" , -85°41'34"	Rancho-160	11°15'3" , -85°41'37"
Majaste-102	11°14'34" , -85°41'27"	Rancho-161	11°15'7" , -85°41'33"
Rancho-162	11°15'3" , -85°41'25"	Ceiba 3-211	11°15'23" , -85°40'52"
Rancho-163	11°15'5" , -85°41'36"	Ceiba 3-212	11°15'23" , -85°40'39"
Rancho-164	11°14'53" , -85°41'7"	Ceiba 3-213	11°15'24" , -85°40'35"
Rancho-165	11°15'9" , -85°41'24"	Ceiba 3-214	11°15'25" , -85°40'47"
Rancho-166	11°15'10" , -85°41'24"	Ceiba 3-215	11°15'25" , -85°40'43"
Rancho-168	11°14'56" , -85°41'8"	Ceiba 3-216	11°15'26" , -85°40'51"
Rancho-169	11°15'2" , -85°41'28"	Ceiba 3-217	11°15'25" , -85°40'40"

Rancho-170	11°15'3" , -85°41'22"	Ceiba 3-218	11°15'25" , -85°40'35"
Rancho-171	11°15'11" , -85°41'21"	Ceiba 3-219	11°15'27" , -85°40'46"
Ceiba 1-173	11°14'55" , -85°40'57"	Ceiba 3-220	11°15'27" , -85°40'41"
Ceiba 1-174	11°14'59" , -85°40'57"	Ceiba 3-221	11°15'28" , -85°40'53"
Ceiba 1-175	11°15'0" , -85°41'0"	Ceiba 3-222	11°15'28" , -85°40'48"
Ceiba 1-176	11°15'1" , -85°40'54"	Ceiba 3-223	11°15'29" , -85°40'44"
Ceiba 1-177	11°15'3" , -85°40'60"	Ceiba 3-224	11°15'31" , -85°40'51"
Ceiba 1-178	11°15'3" , -85°40'51"	Ceiba 3-225	11°15'32" , -85°40'49"
Ceiba 1-179	11°15'5" , -85°40'59"	Ceiba 3-226	11°15'31" , -85°40'47"
Ceiba 1-180	11°15'5" , -85°40'54"	Ceiba 3-227	11°15'34" , -85°40'50"
Ceiba 1-181	11°15'5" , -85°40'52"	Corral-228	11°14'39" , -85°40'48"
Ceiba 1-182	11°15'6" , -85°41'6"	Corral-229	11°14'40" , -85°40'50"
Ceiba 1-183	11°15'6" , -85°40'57"	Corral-230	11°14'41" , -85°40'58"
Ceiba 1-184	11°15'8" , -85°40'59"	Corral-231	11°14'42" , -85°41'1"
Ceiba 1-185	11°15'9" , -85°41'4"	Corral-232	11°14'43" , -85°41'5"
Ceiba 1-186	11°15'8" , -85°41'8"	Corral-233	11°14'43" , -85°40'55"
Ceiba 1-187	11°15'9" , -85°40'57"	Corral-234	11°14'44" , -85°40'51"
Ceiba 1-188	11°15'11" , -85°40'58"	Corral-235	11°14'45" , -85°40'52"
Ceiba 1-189	11°15'13" , -85°41'0"	Corral-236	11°14'46" , -85°40'58"
Ceiba 1-190	11°15'13" , -85°41'1"	Corral-237	11°14'47" , -85°41'2"
Ceiba 1-191	11°15'15" , -85°41'2"	Corral-238	11°14'46" , -85°40'56"
Ceiba 2-192	11°15'7" , -85°40'50"	Corral-239	11°14'47" , -85°40'55"
Ceiba 2-193	11°15'8" , -85°40'49"	Corral-240	11°14'50" , -85°40'60"
Ceiba 2-194	11°15'8" , -85°40'53"	Corral-241	11°14'50" , -85°41'4"
Ceiba 2-195	11°15'9" , -85°40'46"	Corral-242	11°14'50" , -85°40'57"
Ceiba 2-196	11°15'10" , -85°40'49"	Corral-243	11°14'51" , -85°41'2"
Ceiba 2-197	11°15'11" , -85°40'55"	Corral-244	11°14'53" , -85°41'5"
Ceiba 2-198	11°15'12" , -85°40'45"	Corral-245	11°14'54" , -85°41'3"
Ceiba 2-199	11°15'15" , -85°40'60"	Corral-246	11°14'54" , -85°41'0"
Ceiba 2-200	11°15'15" , -85°40'46"	Corral-247	11°14'55" , -85°41'5"
Ceiba 2-201	11°15'17" , -85°41'2"	Corral-248	11°14'57" , -85°41'4"
Ceiba 2-202	11°15'16" , -85°40'57"	Corral-250	11°15'6" , -85°41'8"
Ceiba 2-203	11°15'18" , -85°41'1"	Escondido-251	11°14'32" , -85°40'41"
Ceiba 2-204	11°15'21" , -85°40'56"	Escondido-253	11°14'34" , -85°40'44"
Ceiba 2-205	11°15'23" , -85°40'57"	Escondido-255	11°14'35" , -85°40'40"
Ceiba 2-206	11°15'23" , -85°40'55"	Escondido-256	11°14'34" , -85°40'38"
Ceiba 3-207	11°15'14" , -85°40'42"	Escondido-257	11°14'36" , -85°40'35"
Ceiba 3-208	11°15'17" , -85°40'41"	Escondido-258	11°14'37" , -85°40'36"
Ceiba 3-209	11°15'21" , -85°40'42"	Escondido-260	11°14'38" , -85°40'38"
Ceiba 3-210	11°15'20" , -85°40'38"	Escondido-261	11°14'36" , -85°40'42"
Escondido-263	11°14'43" , -85°40'47"	Genizaro-322	11°14'42" , -85°40'20"

Escondido-264	11°14'43" , -85°40'45"	Genizaro-325	11°14'45" , -85°40'17"
Escondido-265	11°14'43" , -85°40'38"	Genizaro-326	11°14'44" , -85°40'8"
Escondido-267	11°14'45" , -85°40'36"	Jabalina 2-328	11°14'6" , -85°41'9"
Escondido-268	11°14'45" , -85°40'25"	Jabalina 2-329	11°14'6" , -85°41'25"
Escondido-269	11°14'46" , -85°40'46"	Jabalina 2-330	11°14'9" , -85°41'23"
Escondido-270	11°14'46" , -85°40'43"	Jabalina 2-331	11°14'10" , -85°41'28"
Escondido-271	11°14'46" , -85°40'41"	Jabalina 2-332	11°14'12" , -85°41'27"
Escondido-273	11°14'48" , -85°40'47"	Jabalina 2-333	11°14'16" , -85°41'25"
Escondido-275	11°14'49" , -85°40'51"	Jabalinita 2-334	11°14'27" , -85°41'13"
Escondido-276	11°14'48" , -85°40'44"	Jabalinita 2-335	11°14'39" , -85°41'1"
Escondido-278	11°14'50" , -85°40'48"	Jabalinita 2-336	11°14'41" , -85°41'3"
Escondido-279	11°14'48" , -85°40'43"	Majaste 2-337	11°14'18" , -85°41'30"
Escondido-281	11°14'50" , -85°40'46"	Majaste 2-338	11°14'23" , -85°41'36"
Escondido-284	11°14'52" , -85°40'43"	Majaste 2-339	11°14'24" , -85°41'34"
Escondido-285	11°14'52" , -85°40'55"	Majaste 2-340	11°14'27" , -85°41'35"
Escondido-286	11°14'51" , -85°40'46"	Majaste 2-341	11°14'28" , -85°41'39"
Escondido-287	11°14'53" , -85°40'38"	Majaste 2-342	11°14'31" , -85°41'37"
Genizaro-288	11°14'24" , -85°40'12"	Patio-344	11°14'55" , -85°40'46"
Genizaro-289	11°14'25" , -85°40'17"	Patio-345	11°14'55" , -85°40'41"
Genizaro-290	11°14'26" , -85°40'15"	Patio-346	11°14'56" , -85°40'51"
Genizaro-291	11°14'30" , -85°40'10"	Patio-347	11°14'55" , -85°40'43"
Genizaro-292	11°14'31" , -85°40'22"	Patio-349	11°14'57" , -85°40'53"
Genizaro-293	11°14'32" , -85°40'15"	Patio-350	11°14'56" , -85°40'40"
Genizaro-294	11°14'32" , -85°40'7"	Patio-352	11°14'57" , -85°40'49"
Genizaro-295	11°14'33" , -85°40'18"	Patio-353	11°14'58" , -85°40'38"
Genizaro-296	11°14'33" , -85°40'10"	Patio-355	11°14'60" , -85°40'51"
Genizaro-297	11°14'34" , -85°40'23"	Patio-356	11°14'60" , -85°40'44"
Genizaro-299	11°14'35" , -85°40'14"	Patio-359	11°15'3" , -85°40'48"
Genizaro-300	11°14'35" , -85°40'22"	Patio-361	11°15'4" , -85°40'42"
Genizaro-301	11°14'35" , -85°40'16"	Patio-363	11°15'4" , -85°40'31"
Genizaro-302	11°14'35" , -85°40'8"	Patio-365	11°15'7" , -85°40'34"
Genizaro-303	11°14'36" , -85°40'25"	Patio-366	11°15'10" , -85°40'31"
Genizaro-304	11°14'36" , -85°40'13"	Patio-367	11°15'9" , -85°40'39"
Genizaro-305	11°14'38" , -85°40'26"	Patio-368	11°15'9" , -85°40'35"
Genizaro-306	11°14'38" , -85°40'20"	Patio-369	11°15'10" , -85°40'25"
Genizaro-307	11°14'38" , -85°40'9"	Patio-370	11°15'11" , -85°40'42"
Genizaro-308	11°14'39" , -85°40'33"	Patio-371	11°15'10" , -85°40'38"
Genizaro-309	11°14'37" , -85°40'24"	Patio-372	11°15'11" , -85°40'40"
Genizaro-310	11°14'39" , -85°40'17"	El nancite-403	11° 5' 46" , - 84° 32' 37"
Genizaro-311	11°14'39" , -85°40'12"	La milpa-404	11° 5' 55" , - 84° 32' 32"
Genizaro-312	11°14'40" , -85°40'26"	Patio-373	11°15'11" , -85°40'34"

Genizaro-313	11°14'40" , -85°40'20"	Patio-374	11°15'13" , -85°40'21"
Genizaro-314	11°14'40" , -85°40'9"	Patio-375	11°15'15" , -85°40'39"
Genizaro-315	11°14'40" , -85°40'3"	Patio-376	11°15'16" , -85°40'36"
Genizaro-317	11°14'42" , -85°40'25"	Patio-377	11°15'17" , -85°40'29"
Genizaro-319	11°14'41" , -85°40'13"	Patio-378	11°15'17" , -85°40'25"
Patio-381	11°15'20" , -85°40'35"	Patio-379	11°15'18" , -85°40'28"
La escoba-376	11° 12' 4" , - 85° 38' 11"	Patio-380	11°15'20" , -85°40'29"
El Porton-377	11° 12' 14" , - 85° 37' 52"	El comando-405	11° 5' 45" , - 84° 32' 16"
El campamento-378	11° 12' 10" , - 85° 37' 54"	La milpa-406	11° 5' 48" , - 84° 32' 28"
El pozo pimienta-379	11° 12' 6" , - 85° 37' 41"	El guabo-407	11° 5' 41" , - 84° 32' 55"
El Rótulo-380	11° 12' 1" , - 85° 37' 18"	Escondido-395	11° 14' 46" , - 85° 40' 51"
El Chaguite-381	11° 11' 41" , - 85° 37' 46"	Escondido-396	11° 14' 50" , - 85° 40' 52"
El pozo pimienta-382	11° 12' 0" , - 85° 37' 39"		
La horqueta-383	11° 11' 52" , - 85° 38' 4"		
El cuido-384	11° 11' 26" , - 85° 37' 44"		
El uno-385	11° 11' 40" , - 85° 38' 13"		
El uno-387	11° 11' 21" , - 85° 37' 49"		
El dos-388	11° 11' 2" , - 85° 37' 50"		
La presa-389	11° 10' 57" , - 85° 37' 53"		
La presa-390	11° 10' 57" , - 85° 38' 0"		
La presa-391	11° 10' 54" , - 85° 38' 12"		
El Mojòn-392	11° 10' 43" , - 85° 38' 14"		
Jabalina-382	11° 14' 24" , - 85° 40' 55"		
Jabalina-383	11° 14' 17" , - 85° 40' 50"		
Jabalinita-384	11° 14' 27" , - 85° 40' 53"		
Majastito-385	11° 14' 36" , - 85° 41' 39"		
Majastito-386	11° 14' 42" , - 85° 41' 33"		
Rancho-387	11° 14' 57" , - 85° 41' 35"		
Jabalinita-388	11° 14' 24" , - 85° 40' 50"		
Majastito-389	11° 14' 45" , - 85° 41' 39"		
Rancho-390	11° 14' 53" , - 85° 41' 36"		
Ceiba 2-391	11° 15' 16" , - 85° 40' 47"		
Ceiba 3-392	11° 15' 29" , - 85° 40' 52"		
Ceiba 3-393	11° 15' 30" , - 85° 40' 43"		
Escondido-394	11° 14' 49" , - 85° 40' 33"		
Genizaro-397	11° 14' 22" , - 85° 40' 15"		
Genizaro-398	11° 14' 29" , - 85° 40' 14"		
El guabo-400	11° 5' 46" , - 84° 32' 45"		
La milpa-401	11° 5' 48" , - 84° 32' 44"		
El guabo-402	11° 5' 46" , - 84° 32' 40"		



LOCATION OF PERMANENT SAMPLE PLOTS
FINCA LA PIMIENTA

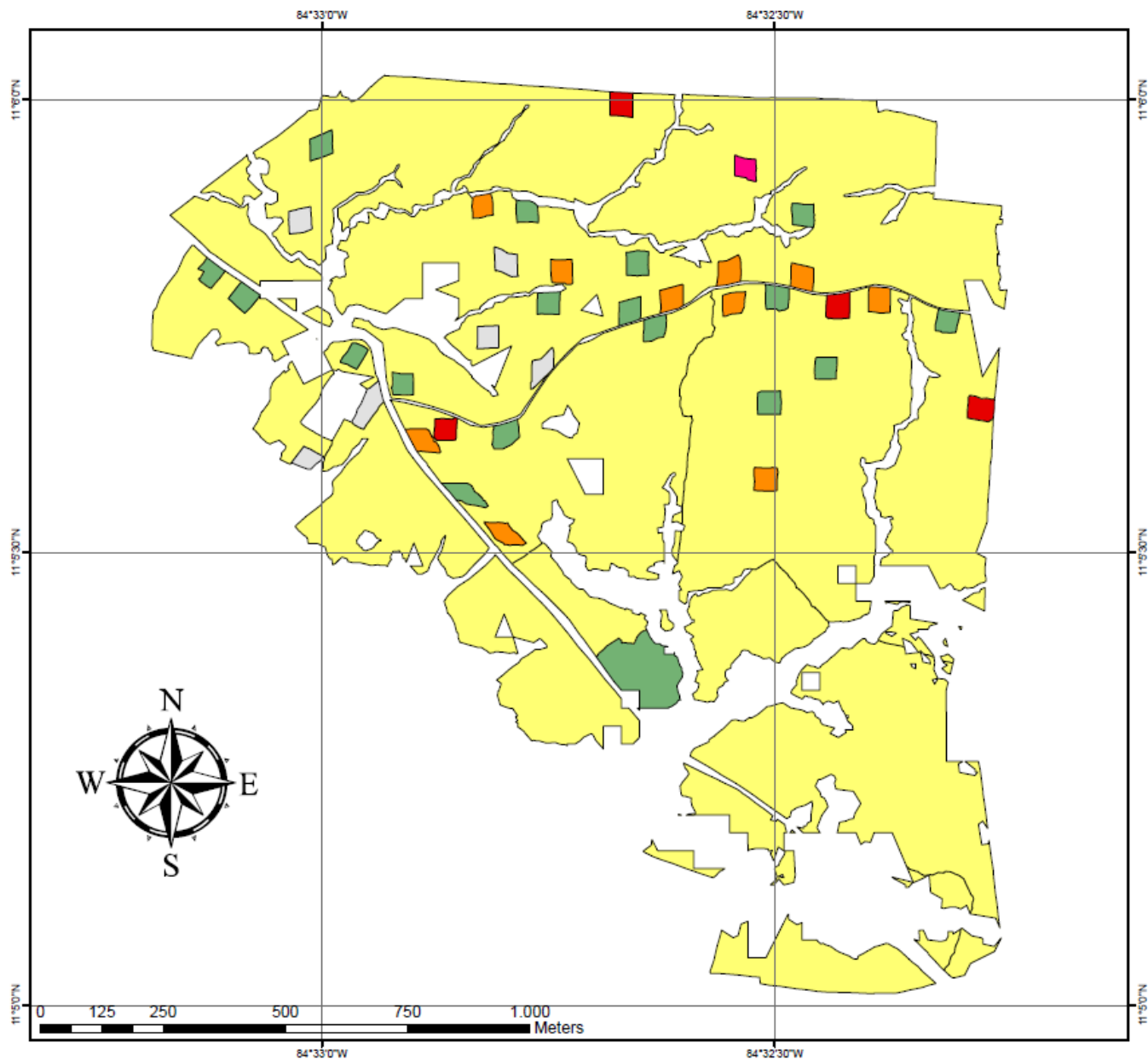


PRECIOUS WOODS

Legend

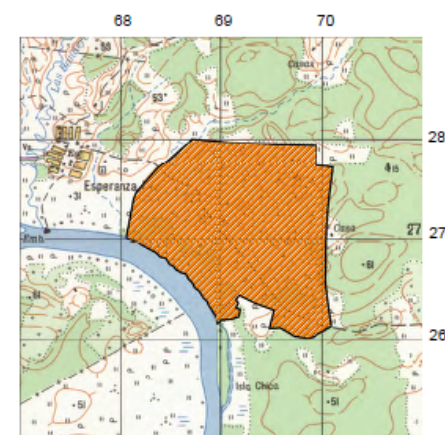
- Permanent sample plot
- CDM Area

ANNEX # 4 TREE SPECIES



PRECIOUS WOODS

TREES SPECIES INCLUDE IN CDM AREA
FINCA LA ESPERANZA



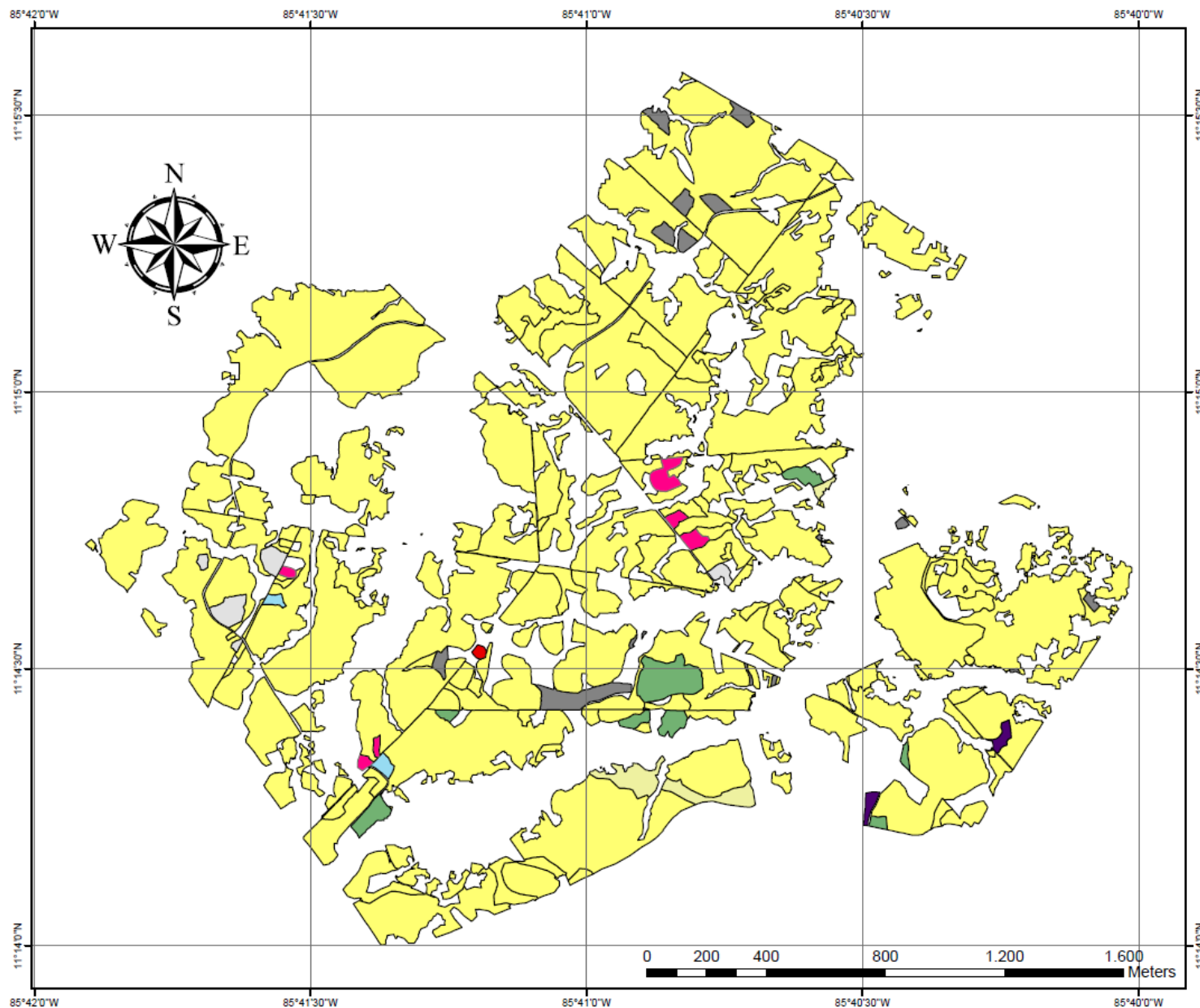
LOCATION IN CARTOGRAPHIC MAP
LAS AZUCENAS SCALE 1:50000

Legend

Esperanza

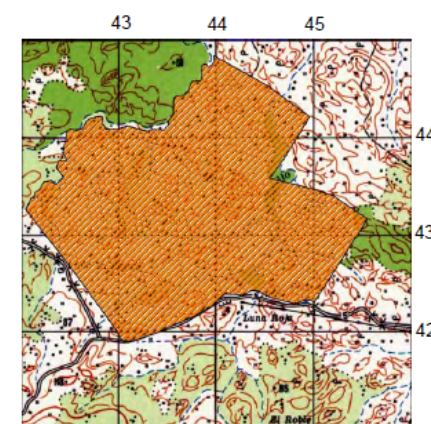
ESPECIE

- Acacia mangium*
- Carapa guianensi*
- Cedrela odorata*
- Dipteryx panamensis*
- Swietenia macrophylla*
- Tectona grandis*



PRECIOUS WOODS

TREES SPECIES INCLUDE IN CDM AREA
FINCA LA JABALINA



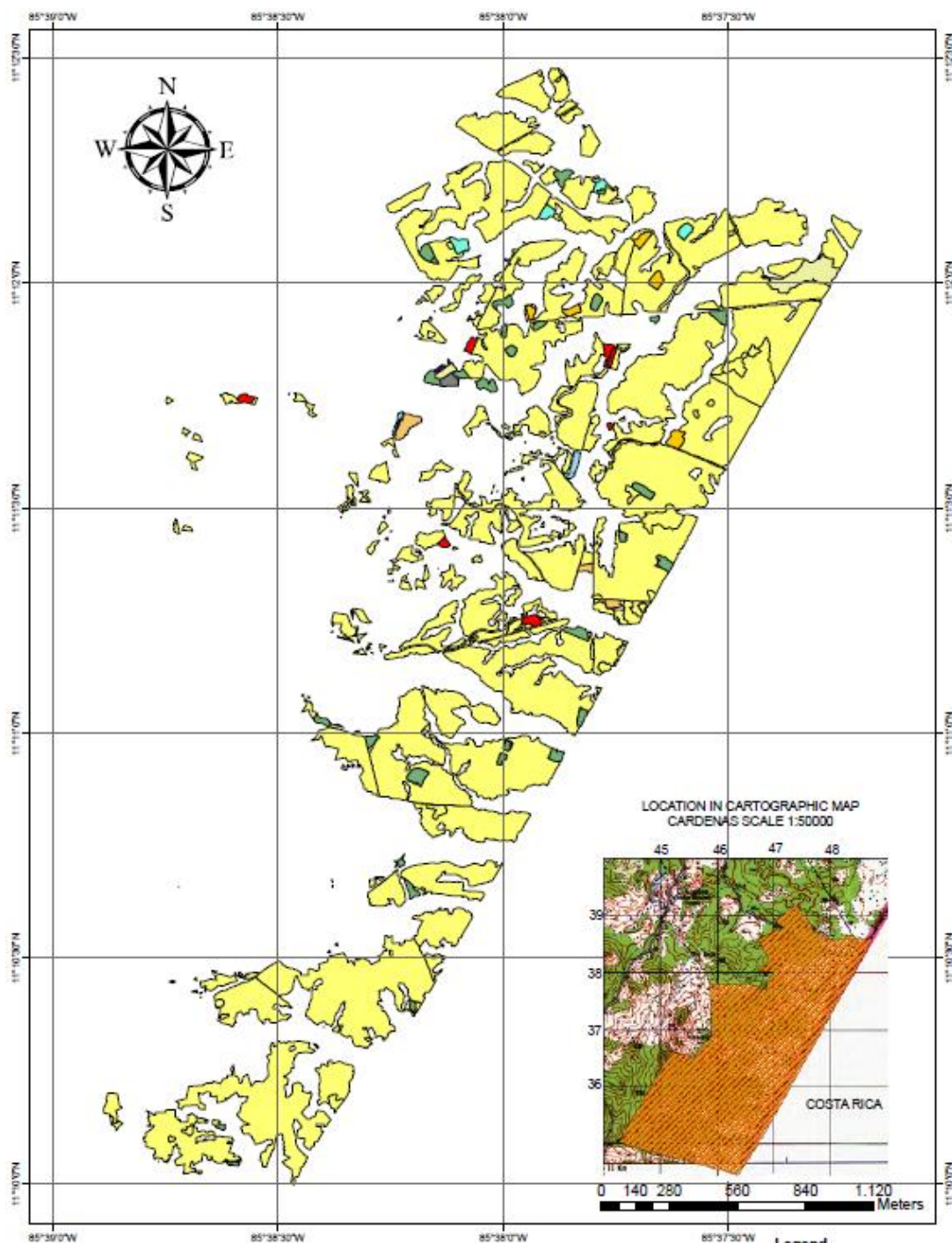
LOCATION IN CARTOGRAPHIC MAP
CARDENA SCALE 1:50000

Legend

Jabalina

ESPECIE

- Astronium graveolens
- Cedrela odorata
- Ceiba pentandra
- Dalbergia retusa
- Samanea saman
- Schizolobium parahy
- Swietenia macrophyl
- Tabebuia rosea
- Tectona grandis



TREES SPECIES INCLUDE IN CDM AREA
FINCA LA PIMIENTA



PRECIOUS WOODS

Legend

pimienta

ESPECIE

- Astronium graveolens*
- Cedrela odorata*
- Dalbergia retusa*
- Hura crepitans*
- Hyeronyma alchomeoides*
- Platymiscium pietotachi*
- Samanea saman*
- Schizobolium parahyba*
- Swietenia macrophylla*
- Tabebuia rosea*
- Tecoma grandis*

ANNEX # 5 AGE OF PLANTATION

Permanent sample plot	Age	Permanent sample plot	Age	Permanent sample plot	Age
La laguna-1	5.18	El guabo-63	7.44	La milpa-110	7.44
Las trozas-2	8.35	El nancite-64	7.44	La milpa-111	7.44
Las trozas-4	8.35	El nancite-65	7.44	La milpa-112	7.44
Las trozas-7	8.35	El guabo-66	7.44	El lagarto-113	7.44
La laguna-8	8.35	El nancite-67	7.44	La milpa-115	7.44
La laguna-14	8.35	El comando-68	7.44	La milpa-116	7.44
Las trozas-15	8.35	El guabo-69	7.44	La milpa-117	7.44
La laguna-16	8.35	El guabo-70	7.44	La milpa-118	7.44
Las trozas-17	8.35	El comando-71	7.44	El lagarto-119	7.44
Las trozas-18	8.35	El nancite-73	7.44	La milpa-120	7.44
Las trozas-19	8.35	La milpa-74	7.44	La milpa-121	7.44
Las trozas-20	8.35	La milpa-75	7.44	La milpa-123	7.44
Las trozas-21	8.35	El genizaro 2004-76	7.44	La milpa-124	7.44
Las trozas-22	8.35	La milpa-77	7.44	La milpa-125	7.44
Las trozas-23	8.35	El guabo-78	7.44	El puente-126	7.44
Las trozas-24	8.35	El guabo-79	7.44	La milpa-127	7.44
Las trozas-25	8.35	El nancite-80	7.44	La milpa-128	7.44
El pozo esperanza-26	8.35	El nancite-81	7.44	La milpa-129	7.44
El pozo esperanza-27	8.35	El comando-82	7.44	El puente-130	7.44
El pozo esperanza-29	8.35	El genizaro 2004-83	7.44	La milpa-131	7.44
El pozo esperanza-33	8.35	La milpa-84	7.44	El puente-132	7.44
El pozo esperanza-34	8.35	El genizaro 2004-85	7.44	El puente-133	7.44
El guarumo-35	8.35	La milpa-86	7.44	La milpa-134	7.44
El guarumo-36	8.35	El guabo-87	7.44	El puente-135	7.44
El guarumo-37	8.35	El guabo-88	7.44	El puente-136	7.44
El coyote-38	8.35	El nancite-89	7.44	El puente-137	7.44
El guarumo-39	8.35	El nancite-90	7.44	La milpa-138	7.44
El coyote-40	8.35	El nancite-91	7.44	La milpa-139	7.44
El pozo esperanza-41	8.35	El nancite-92	7.44	La milpa-140	7.44
El nancite-42	8.35	El nancite-93	7.44	El puente-141	7.44
El pozo esperanza-43	8.35	El nancite-94	7.44	El puente-143	7.44
El pozo esperanza-44	8.35	El genizaro 2004-95	7.44	El puente-144	7.44
El pozo esperanza-45	8.35	La milpa-96	7.44	El puente-145	7.44
El pozo esperanza-46	8.35	El nancite-97	7.44	El puente-146	7.44
El pozo esperanza-47	8.35	El comando-98	7.44	El puente-147	7.44
El cuzuco-48	8.35	La milpa-99	7.44	El puente-148	7.44
El nancite-53	7.44	La milpa-100	7.44	La milpa-149	7.44
El nancite-54	7.44	La milpa-101	7.44	La cruz-2	8.27
El comando-55	7.44	La milpa-102	7.44	La cruz-3	8.27

El nancite-56	7.44	La milpa-103	7.44	El Chaguite-4	8.27
El comando-57	7.44	La milpa-104	7.44	El Chaguite-5	8.27
El nancite-58	7.44	El lagarto -105	7.44	El Chaguite-7	8.27
El nancite-59	7.44	La milpa-106	7.44	El Chaguite-8	8.27
El guabo-60	7.44	La milpa-107	7.44	La cruz-9	8.27
El nancite-61	7.44	La milpa-108	7.44	La horqueta-10	8.35
El nancite-62	7.44	La milpa-109	7.44	La horqueta-11	8.35
La cruz-12	8.27	La escoba-62	8.35	El miralagos-127	7.44
La cruz-13	8.27	La escoba-63	8.35	El miralagos-128	7.44
La horqueta-14	8.35	La escoba-64	8.35	El miralagos-129	7.44
El Chaguite-15	8.27	La escoba-65	8.35	El Mojòn-130	7.60
La cruz-16	8.27	El porton-66	8.35	El Mojòn-132	7.60
La horqueta-17	8.35	El pozo pimienta-67	8.27	El Mojòn-133	7.60
El Chaguite-18	8.27	La escoba-68	8.35	El Mojòn-134	7.60
La horqueta-19	8.35	El porton-69	8.35	Frontera-139	7.35
La horqueta-20	8.35	El pozo pimienta-70	8.27	El Mojòn-140	7.60
La horqueta-21	8.35	La escoba-71	8.35	El Mojòn-143	7.60
El Chaguite-22	8.27	El pozo pimienta-72	8.27	Frontera-144	7.35
El Chaguite-23	8.27	La escoba-73	8.35	El Rincòn-145	7.52
El Chaguite-24	8.27	La escoba-74	8.35	El Rincòn-146	7.52
La horqueta-25	8.35	La escoba-75	8.35	El Mojòn-149	7.60
La horqueta-26	8.35	La escoba-76	8.35	El Mojòn-151	7.60
El Chaguite-27	8.27	La escoba-77	8.35	El Mojòn-152	7.60
La cruz-28	8.27	El porton-78	8.35	La presa-159	7.52
La cruz-29	8.27	El porton-79	8.35	La presa-160	7.60
La cruz-30	8.27	Frontera-80	7.35	La presa-161	7.60
La cruz-31	8.27	Frontera-82	7.35	La presa-162	7.60
La cruz-33	8.27	Frontera-83	7.35	El sitio-164	7.52
La cruz-34	8.27	Frontera-86	7.35	La presa-165	7.60
La cruz-35	8.27	Frontera-88	7.35	La presa-166	7.60
La cruz-36	8.27	Frontera-89	7.35	La presa-168	7.60
El Chaguite-38	8.27	Frontera-90	7.35	El dos-169	7.35
La cruz-39	8.27	Frontera-91	7.35	La presa-170	7.60
La escoba-40	8.35	Frontera-92	7.35	La presa-171	7.60
El campamento-42	8.27	Frontera-93	7.35	La presa-172	7.60
La cruz-43	8.35	Frontera-97	7.35	La presa-173	7.60
La cruz-44	8.35	Frontera-98	7.35	El sitio-174	7.52
La cruz-45	8.35	La presa-103	7.60	El sitio-175	7.52
El campamento-46	8.27	Frontera-104	7.35	El sitio-176	7.52
El pozo pimienta-47	8.27	Frontera-106	7.35	La presa-177	7.60
La escoba-48	8.35	el sitio-107	7.52	La presa-178	7.60
El campamento-49	8.27	Frontera-109	7.35	El sitio-180	7.52

La escoba-50	8.35	Frontera-111	7.35	La presa-181	7.60
El campamento-51	8.27	El Mojòn-114	7.60	La presa-182	7.60
El campamento-52	8.27	El miralagos-117	7.44	La presa-183	7.60
El pozo pimienta-53	8.27	El miralagos-118	7.44	El dos-190	7.35
El pozo pimienta-54	8.27	El miralagos-119	7.44	El dos-193	8.35
El pozo pimienta-55	8.27	El Rincòn-120	7.52	El dos-195	7.35
La escoba-56	8.35	Frontera-121	7.35	El dos-196	7.35
El pozo pimienta-57	8.27	El miralagos-122	7.44	El cuido-198	7.35
El pozo pimienta-58	8.27	El miralagos-123	7.44	El dos-201	7.35
La escoba-59	8.35	El Mojòn-124	7.60	El dos-203	7.35
La escoba-60	8.35	El miralagos-125	7.44	El dos-206	7.35
La escoba-61	8.35	El miralagos-126	7.44	El dos-207	7.35
El dos-208	7.35	El esfuerzo-291	7.10	Jabalina-43	6.35
El dos-209	7.35	El esfuerzo-292	7.10	Jabalina-46	6.35
El uno-211	7.44	El esfuerzo-293	7.10	Jabalina-47	6.35
El dos-212	7.35	El esfuerzo-294	7.10	Jabalina-48	6.35
El dos-213	7.35	El esfuerzo-295	7.10	Jabalina-49	6.35
El dos-214	7.35	El esfuerzo-296	7.10	Jabalina-50	6.35
El cuido-215	7.35	Sitio 2-321	6.27	Jabalina-51	6.35
El sitio-216	7.52	Sitio 2-354	6.27	Jabalina-52	6.35
El uno-217	7.44	Sitio 2-365	6.27	Jabalina-53	6.35
El uno-218	7.44	Sitio 2-366	6.27	Jabalina-54	6.35
El uno-220	7.44	Sitio 2-367	6.44	Jabalina-55	6.35
El dos-222	7.35	Sitio 2-370	6.27	Jabalina-56	6.35
El uno-223	7.44	Pozo-1	5.20	Jabalina-58	6.35
El uno-224	7.44	Pozo-2	6.44	Jabalinita-62	6.44
El cuido-225	7.35	Pozo-3	6.44	Jabalinita-63	6.44
El uno-228	7.44	Pozo-5	6.44	Jabalinita-64	6.44
Frontera-229	7.35	Pozo-6	6.44	Jabalinita-65	6.44
El uno-230	7.44	Pozo-7	6.44	Jabalinita-66	6.44
El cuido-231	7.35	Pozo-8	6.44	Jabalinita-67	6.44
El cuido-234	7.35	Pozo-9	6.44	Jabalinita-68	6.44
El uno-235	7.44	Pozo-11	6.44	Jabalinita-69	6.44
El cuido-236	7.35	Pozo-12	6.44	Jabalinita-70	6.44
El uno-237	7.44	Pozo-13	6.44	Jabalinita-71	6.44
El uno-242	7.44	Pozo-14	6.44	Jabalinita-72	6.44
El miralagos-243	7.44	Pozo-15	6.44	Jabalinita-73	6.44
El uno-244	7.44	Jabalina-18	6.35	Jabalinita-74	6.44
El cuido-245	7.52	Jabalina-19	6.35	Jabalinita-76	6.44
El uno-246	7.44	Jabalina-20	6.35	Jabalinita-77	6.44
El miralagos-248	7.44	Jabalina-21	6.35	Majaste-81	6.27
El uno-249	7.44	Jabalina-23	6.35	Majaste-82	6.27

El cuido-250	7.35	Jabalina-24	6.35	Majaste-83	6.27
El cuido-251	7.35	Jabalina-25	6.35	Majaste-84	6.27
El cuido-252	7.35	Jabalina-26	6.35	Majaste-85	6.27
El uno-256	7.48	Jabalina-28	6.35	Majaste-86	6.27
El uno-258	7.44	Jabalina-29	6.35	Majaste-87	6.27
El uno-260	7.44	Jabalina-30	6.35	Majaste-88	6.27
El uno-261	7.44	Jabalina-31	6.35	Majaste-89	6.27
El cuido-263	7.35	Jabalina-32	6.35	Majaste-91	6.27
El cuido-264	7.44	Jabalina-33	6.35	Majaste-92	6.27
El cuido-271	7.35	Jabalina-35	6.35	Majaste-93	6.27
El cuido-275	7.35	Jabalina-36	6.35	Majaste-94	6.27
El Mojòn-277	7.60	Jabalina-37	6.35	Majaste-95	6.27
El sitio-279	7.44	Jabalina-38	6.35	Majaste-97	6.27
Frontera-287	7.35	Jabalina-39	6.35	Majaste-98	6.27
El Rótulo-288	7.27	Jabalina-40	6.35	Majaste-99	6.27
El Rótulo-289	7.27	Jabalina-41	6.35	Majaste-100	6.27
El esfuerzo-290	7.10	Jabalina-42	6.35	Majaste-101	6.27
Majaste-102	6.27	Rancho-161	6.18	Ceiba 3-210	5.35
Majaste-103	6.27	Rancho-162	6.18	Ceiba 3-211	5.35
Majaste-104	6.27	Rancho-163	6.18	Ceiba 3-212	5.35
Majaste-105	6.27	Rancho-164	6.18	Ceiba 3-213	5.35
Majaste-106	6.27	Rancho-165	6.18	Ceiba 3-214	5.35
Majaste-109	6.27	Rancho-166	6.18	Ceiba 3-215	5.35
Majaste-110	6.27	Rancho-168	6.18	Ceiba 3-216	5.35
Majastito-111	6.27	Rancho-169	6.18	Ceiba 3-217	5.35
Majastito-113	6.27	Rancho-170	6.18	Ceiba 3-218	5.35
Majastito-114	6.27	Rancho-171	6.18	Ceiba 3-219	5.35
Majastito-115	6.27	Ceiba 1-173	5.44	Ceiba 3-220	5.35
Majastito-116	6.27	Ceiba 1-174	5.44	Ceiba 3-221	5.35
Majastito-117	6.27	Ceiba 1-175	5.44	Ceiba 3-222	5.35
Majastito-118	6.27	Ceiba 1-176	5.44	Ceiba 3-223	5.35
Majastito-120	6.27	Ceiba 1-177	5.44	Ceiba 3-224	5.35
Majastito-121	6.27	Ceiba 1-178	5.44	Ceiba 3-225	5.35
Majastito-122	6.27	Ceiba 1-179	5.44	Ceiba 3-226	5.35
Majastito-123	6.27	Ceiba 1-180	5.44	Ceiba 3-227	5.35
Majastito-124	6.27	Ceiba 1-181	5.44	Corral-228	5.35
Majastito-125	6.27	Ceiba 1-182	5.44	Corral-229	5.35
Majastito-126	6.27	Ceiba 1-183	5.44	Corral-230	5.35
Majastito-127	6.27	Ceiba 1-184	5.44	Corral-231	5.35
Rancho-128	6.18	Ceiba 1-185	5.44	Corral-232	5.27
Rancho-129	6.18	Ceiba 1-186	5.44	Corral-233	5.35
Rancho-130	6.18	Ceiba 1-187	5.44	Corral-234	5.35

Rancho-132	6.18	Ceiba 1-188	5.44	Corral-235	5.35
Rancho-133	6.18	Ceiba 1-189	5.44	Corral-236	5.35
Rancho-135	6.18	Ceiba 1-190	5.44	Corral-237	5.35
Rancho-136	6.18	Ceiba 1-191	5.44	Corral-238	5.35
Rancho-137	6.18	Ceiba 2-192	5.44	Corral-239	5.35
Rancho-138	6.18	Ceiba 2-193	5.44	Corral-240	5.35
Rancho-140	6.18	Ceiba 2-194	5.44	Corral-241	5.35
Rancho-141	6.18	Ceiba 2-195	5.44	Corral-242	5.35
Rancho-143	6.18	Ceiba 2-196	5.44	Corral-243	5.35
Rancho-144	6.18	Ceiba 2-197	5.44	Corral-244	5.35
Rancho-148	6.18	Ceiba 2-198	5.44	Corral-245	5.35
Rancho-149	6.18	Ceiba 2-199	5.44	Corral-246	5.35
Rancho-150	6.18	Ceiba 2-200	5.44	Corral-247	5.35
Rancho-151	6.18	Ceiba 2-201	5.44	Corral-248	5.35
Rancho-152	6.18	Ceiba 2-202	5.44	Corral-250	5.35
Rancho-153	6.18	Ceiba 2-203	5.44	Escondido-251	5.18
Rancho-155	6.18	Ceiba 2-204	5.44	Escondido-253	5.18
Rancho-156	6.18	Ceiba 2-205	5.44	Escondido-255	5.18
Rancho-157	6.18	Ceiba 2-206	5.44	Escondido-256	5.18
Rancho-158	6.18	Ceiba 3-207	5.35	Escondido-257	5.18
Rancho-159	6.18	Ceiba 3-208	5.35	Escondido-258	5.18
Rancho-160	6.18	Ceiba 3-209	5.35	Escondido-260	5.18
Escondido-261	5.18	Genizaro-319	5.27	Patio-380	5.27
Escondido-263	5.18	Genizaro-322	5.27	Patio-381	5.27
Escondido-264	5.18	Genizaro-325	5.27	La escoba-376	8.35
Escondido-265	0.26	Genizaro-326	5.27	El Porton-377	8.35
Escondido-267	5.18	Jabalina 2-328	5.18	El campamento-378	8.27
Escondido-268	5.18	Jabalina 2-329	5.18	El pozo pimienta-379	8.27
Escondido-269	5.18	Jabalina 2-330	5.18	El Rótulo-380	7.27
Escondido-270	5.18	Jabalina 2-331	5.18	El Chaguite-381	8.35
Escondido-271	5.18	Jabalina 2-332	5.18	El pozo pimienta-382	8.27
Escondido-273	5.18	Jabalina 2-333	5.18	La horqueta-383	8.35
Escondido-275	5.18	Jabalinita 2-334	5.18	El cuido-384	7.35
Escondido-276	5.18	Jabalinita 2-335	5.18	El uno-385	7.44
Escondido-278	5.18	Jabalinita 2-336	5.18	El uno-387	7.44
Escondido-279	5.18	Majaste 2-337	5.18	El dos-388	7.35
Escondido-281	5.18	Majaste 2-338	5.18	La presa-389	7.60
Escondido-284	5.18	Majaste 2-339	5.18	La presa-390	7.60
Escondido-285	5.18	Majaste 2-340	5.18	La presa-391	7.60
Escondido-286	5.18	Majaste 2-341	5.18	El Mojòn-392	7.60
Escondido-287	5.18	Majaste 2-342	5.18	Jabalina-382	6.35
Genizaro-288	5.18	Patio-344	5.27	Jabalina-383	6.35

Genizaro-289	5.27	Patio-345	5.27	Jabalinita-384	6.44
Genizaro-290	5.27	Patio-346	5.27	Majastito-385	6.27
Genizaro-291	5.27	Patio-347	5.27	Majastito-386	6.27
Genizaro-292	5.27	Patio-349	5.27	Rancho-387	6.18
Genizaro-293	5.27	Patio-350	5.27	Jabalinita-388	6.44
Genizaro-294	5.27	Patio-352	5.27	Majastito-389	6.27
Genizaro-295	5.27	Patio-353	5.27	Rancho-390	6.18
Genizaro-296	5.27	Patio-355	5.27	Ceiba 2-391	5.44
Genizaro-297	5.27	Patio-356	5.27	Ceiba 3-392	5.35
Genizaro-299	5.27	Patio-359	5.27	Ceiba 3-393	5.35
Genizaro-300	5.27	Patio-361	5.27	Escondido-394	5.18
Genizaro-301	5.27	Patio-363	5.27	Genizaro-397	5.27
Genizaro-302	5.27	Patio-365	5.27	Genizaro-398	5.27
Genizaro-303	5.27	Patio-366	5.27	El guabo-400	7.44
Genizaro-304	5.27	Patio-367	5.27	La milpa-401	7.44
Genizaro-305	5.27	Patio-368	5.27	El guabo-402	7.44
Genizaro-306	5.27	Patio-369	5.27	El nancite-403	7.44
Genizaro-307	5.27	Patio-370	5.27	La milpa-404	7.44
Genizaro-308	5.27	Patio-371	5.27	El comando-405	7.44
Genizaro-309	5.27	Patio-372	5.27	La milpa-406	7.44
Genizaro-310	5.27	Patio-373	5.27	El guabo-407	7.44
Genizaro-311	5.27	Patio-374	5.27	Escondido-395	5.18
Genizaro-312	5.27	Patio-375	5.27	Escondido-396	5.18
Genizaro-313	5.27	Patio-376	5.27		
Genizaro-314	5.27	Patio-377	5.27		
Genizaro-315	5.27	Patio-378	5.27		
Genizaro-317	5.27	Patio-379	5.27		

ANNEX # 6 MEAN DBH 100% SAMPLING PLOTS

SID	Mean DBH	SID	Mean DBH	SID	Mean DBH	SID	Mean DBH
Ceiba 1-173	12.08	Ceiba 3-222	10.71	El comando-57	10.82	El guabo-400	10.28
Ceiba 1-174	13.12	Ceiba 3-223	13.15	El comando-68	11.60	El guabo-402	8.73
Ceiba 1-175	10.19	Ceiba 3-224	11.70	El comando-71	11.11	El guabo-407	10.50
Ceiba 1-176	13.85	Ceiba 3-225	13.42	El comando-82	10.65	El guabo-60	9.27
Ceiba 1-177	13.76	Ceiba 3-226	11.94	El comando-98	10.63	El guabo-63	11.49
Ceiba 1-178	9.14	Ceiba 3-227	11.99	El coyote-38	12.45	El guabo-66	11.43
Ceiba 1-179	10.61	Ceiba 3-392	9.86	El coyote-40	12.98	El guabo-69	12.41
Ceiba 1-180	9.74	Ceiba 3-393	9.72	El Cuido-198	17.21	El guabo-70	10.85
Ceiba 1-181	10.71	Corral-228	13.24	EL Cuido-215	15.38	El guabo-78	9.29
Ceiba 1-182	10.85	Corral-229	12.62	El Cuido-225	15.38	El guabo-79	11.96
Ceiba 1-183	14.05	Corral-230	13.75	El Cuido-231	18.26	El guabo-87	10.91
Ceiba 1-184	9.07	Corral-231	13.63	El Cuido-234	18.49	El guabo-88	10.48
Ceiba 1-185	11.26	Corral-232	12.93	El Cuido-236	15.70	El guarumo-35	12.59
Ceiba 1-186	12.43	Corral-233	15.72	El Cuido-245	14.39	El guarumo-36	10.40
Ceiba 1-187	14.08	Corral-234	8.90	El Cuido-250	12.80	El guarumo-37	10.66
Ceiba 1-188	14.85	Corral-235	15.84	El Cuido-251	15.15	El guarumo-39	10.17
Ceiba 1-189	14.40	Corral-236	11.06	El Cuido-252	15.97	El lagarto -105	13.11
Ceiba 1-190	13.90	Corral-237	11.54	El Cuido-263	15.60	El lagarto-113	12.18
Ceiba 1-191	14.78	Corral-238	9.44	El Cuido-264	17.39	El lagarto-119	11.22
Ceiba 2-192	12.21	Corral-239	10.08	El Cuido-271	11.93	El Miralagos-117	18.22
Ceiba 2-193	13.42	Corral-240	13.12	El Cuido-275	16.69	El Miralagos-118	16.54
Ceiba 2-194	13.82	Corral-241	10.47	El Cuido-384	7.29	El Miralagos-119	16.07
Ceiba 2-195	13.07	Corral-242	10.06	El cuzuco-48	9.14	El Miralagos-122	18.53
Ceiba 2-196	11.99	Corral-243	7.70	El Dos-169	13.17	El Miralagos-123	15.72
Ceiba 2-197	15.74	Corral-244	7.29	El Dos-190	15.04	El Miralagos-125	14.83
Ceiba 2-198	13.98	Corral-245	7.73	El Dos-193	14.87	El Miralagos-126	15.09
Ceiba 2-199	9.85	Corral-246	11.04	El Dos-195	17.51	El Miralagos-127	18.06
Ceiba 2-200	12.23	Corral-247	10.68	El Dos-196	15.02	El Miralagos-128	18.74
Ceiba 2-201	10.35	Corral-248	7.60	El Dos-201	15.88	El Miralagos-129	15.10
Ceiba 2-202	14.00	Corral-250	7.54	El Dos-203	17.64	El Miralagos-243	14.51
Ceiba 2-203	10.58	El Campamento-378	5.97	El Dos-206	17.58	El Miralagos-248	19.85
Ceiba 2-204	16.24	El Campamento-42	20.83	El Dos-207	15.08	El Mojòn-114	21.89
Ceiba 2-205	9.10	El Campamento-46	18.97	El Dos-208	14.69	El Mojòn-124	15.83
Ceiba 2-206	12.13	El Campamento-49	20.11	El Dos-209	13.15	El Mojòn-130	17.31
Ceiba 2-391	6.88	El Campamento-51	19.27	El Dos-212	17.36	El Mojòn-132	15.19
Ceiba 3-207	13.49	El Campamento-52	18.38	El Dos-213	14.89	El Mojòn-133	15.10
Ceiba 3-208	10.82	El Chaguite-15	21.65	El Dos-214	13.48	El Mojòn-134	11.80
Ceiba 3-209	14.13	El Chaguite-18	21.09	El Dos-222	17.73	El Mojòn-140	17.63

Ceiba 3-210	13.30	El Chaguite-22	20.32	El Dos-388	9.67	El Mojòn-143	18.98
Ceiba 3-211	14.52	El Chaguite-23	19.70	El Esfuerzo-290	18.54	El Mojòn-149	15.10
Ceiba 3-212	16.31	El Chaguite-24	20.35	El Esfuerzo-291	18.11	El Mojòn-151	12.07
Ceiba 3-213	11.67	El Chaguite-27	20.20	El Esfuerzo-292	19.04	El Mojòn-152	14.92
Ceiba 3-214	10.44	El Chaguite-38	22.96	El Esfuerzo-293	12.47	El Mojòn-277	16.80
Ceiba 3-215	13.78	El chaguite-381	7.04	El Esfuerzo-294	16.85	El Mojòn-392	7.97
Ceiba 3-216	9.47	El Chaguite-4	21.84	El Esfuerzo-295	13.59	El nancite-403	10.12
Ceiba 3-217	14.19	El Chaguite-5	18.69	El Esfuerzo-296	14.67	El nancite-42	11.27
Ceiba 3-218	13.98	El Chaguite-7	19.20	El genizaro 2004-76	14.18	El nancite-53	11.21
Ceiba 3-219	12.68	El Chaguite-8	19.18	El genizaro 2004-83	14.39	El nancite-54	10.56
Ceiba 3-220	13.42	El comando-405	9.30	El genizaro 2004-85	12.64	Genizaro-297	8.83
Ceiba 3-221	13.27	El comando-55	10.25	El genizaro 2004-95	13.76	Genizaro-299	8.20
El nancite-56	10.81	El puente-136	10.17	Escondido-261	14.87	Genizaro-300	9.77
El nancite-58	11.41	El puente-137	10.99	Escondido-263	14.82	Genizaro-301	9.79
El nancite-59	10.43	El puente-141	12.50	Escondido-264	12.50	Genizaro-302	11.24
El nancite-61	10.03	El puente-143	11.61	Escondido-265	13.79	Genizaro-303	8.35
El nancite-62	9.67	El puente-144	11.17	Escondido-267	12.21	Genizaro-304	10.11
El nancite-64	9.09	El puente-145	11.78	Escondido-268	10.45	Genizaro-305	6.43
El nancite-65	11.92	El puente-146	10.03	Escondido-269	11.81	Genizaro-306	11.04
El nancite-67	10.93	El puente-147	11.75	Escondido-270	6.14	Genizaro-307	9.63
El nancite-73	8.64	El puente-148	11.39	Escondido-271	8.68	Genizaro-308	10.85
El nancite-80	10.18	El Rincòn-120	21.33	Escondido-273	13.92	Genizaro-309	10.91
El nancite-81	9.63	El Rincòn-145	16.84	Escondido-275	9.53	Genizaro-310	10.90
El nancite-89	9.70	El Rincòn-146	16.86	Escondido-276	9.38	Genizaro-311	7.67
El nancite-90	9.66	El Rótulo-288	15.60	Escondido-278	9.35	Genizaro-312	7.43
El nancite-91	10.26	El Rótulo-289	11.53	Escondido-279	7.17	Genizaro-313	10.16
El nancite-92	10.62	El Rótulo-380	7.99	Escondido-281	10.25	Genizaro-314	11.15
El nancite-93	9.82	El Sitio-107	16.31	Escondido-284	14.52	Genizaro-315	11.66
El nancite-94	9.92	El Sitio-164	14.38	Escondido-285	13.28	Genizaro-317	7.82
El nancite-97	10.57	El Sitio-174	19.67	Escondido-286	7.37	Genizaro-319	8.36
El porton-377	10.95	El Sitio-175	18.84	Escondido-287	14.13	Genizaro-322	8.99
El Porton-66	21.87	El Sitio-176	18.22	Escondido-394	4.81	Genizaro-325	8.19
El Porton-69	20.60	El Sitio-180	20.08	Frontera-104	16.97	Genizaro-326	12.42
El Porton-78	19.53	El Sitio-216	22.32	Frontera-106	13.18	Genizaro-397	15.03
El Porton-79	18.87	El Sitio-279	18.59	Frontera-109	16.64	Genizaro-398	12.86
El pozo esperanza-26	13.36	El Uno-211	13.38	Frontera-111	18.31	Jabalina 2-328	6.82
El pozo esperanza-27	13.50	El Uno-217	18.57	Frontera-121	17.22	Jabalina 2-329	9.30
El pozo esperanza-29	13.51	El Uno-218	21.53	Frontera-139	16.28	Jabalina 2-330	8.86
El pozo esperanza-33	12.25	El Uno-220	18.54	Frontera-144	16.06	Jabalina 2-331	9.31
El pozo esperanza-34	12.98	El Uno-223	18.66	Frontera-229	13.37	Jabalina 2-332	9.31
El pozo esperanza-41	12.77	El Uno-224	15.60	Frontera-287	16.15	Jabalina 2-333	8.51
El pozo esperanza-43	12.41	El Uno-228	19.57	Frontera-80	15.09	Jabalina-18	13.47

El pozo esperanza-44	11.92	El Uno-230	16.97	Frontera-82	12.73	Jabalina-19	12.45
El pozo esperanza-45	14.07	El Uno-235	18.08	Frontera-83	12.08	Jabalina-20	12.54
El pozo esperanza-46	12.03	El Uno-237	19.93	Frontera-86	10.97	Jabalina-21	12.08
El pozo esperanza-47	11.62	El Uno-242	20.38	Frontera-88	13.96	Jabalina-23	14.33
El pozo pimienta-379	7.47	El Uno-244	21.55	Frontera-89	17.32	Jabalina-24	14.68
El pozo pimienta-382	8.03	El Uno-246	19.59	Frontera-90	18.23	Jabalina-25	13.16
El pozo pimienta-47	21.76	El Uno-249	18.55	Frontera-91	19.73	Jabalina-26	14.36
El pozo pimienta-53	18.22	El Uno-256	18.41	Frontera-92	17.61	Jabalina-28	14.38
El pozo pimienta-54	17.52	El Uno-258	16.76	Frontera-93	15.72	Jabalina-29	11.80
El pozo pimienta-55	18.17	El Uno-260	16.46	Frontera-97	16.02	Jabalina-30	13.01
El pozo pimienta-57	17.23	El Uno-261	13.84	Frontera-98	14.48	Jabalina-31	14.50
El pozo pimienta-58	18.93	El Uno-385	16.56	Genizaro-288	11.72	Jabalina-32	15.74
El pozo pimienta-67	16.40	El Uno-387	17.78	Genizaro-289	11.10	Jabalina-33	12.21
El pozo pimienta-70	15.36	Escondido-251	15.55	Genizaro-290	8.52	Jabalina-35	12.74
El pozo pimienta-72	17.38	Escondido-253	11.98	Genizaro-291	11.37	Jabalina-36	15.27
El puente-126	10.82	Escondido-255	7.72	Genizaro-292	10.70	Jabalina-37	12.82
El puente-130	10.94	Escondido-256	7.85	Genizaro-293	12.23	Jabalina-38	11.79
El puente-132	12.18	Escondido-257	9.48	Genizaro-294	10.24	Jabalina-382	9.83
El puente-133	11.48	Escondido-258	11.31	Genizaro-295	10.17	Las trozas-17	12.00
El puente-135	12.41	Escondido-260	10.05	Genizaro-296	9.76	Las trozas-18	11.24
Jabalina-383	5.91	La Cruz-36	22.28	La milpa-112	11.41	Las trozas-19	11.48
Jabalina-39	13.94	La Cruz-39	21.77	La milpa-115	12.77	Las trozas-2	10.39
Jabalina-40	12.12	La Cruz-43	20.30	La milpa-116	10.78	Las trozas-20	10.43
Jabalina-41	10.98	La Cruz-44	17.75	La milpa-117	11.42	Las trozas-21	10.99
Jabalina-42	12.94	La Cruz-45	17.24	La milpa-118	9.48	Las trozas-22	9.89
Jabalina-43	10.44	La Cruz-9	18.90	La milpa-120	11.08	Las trozas-23	11.24
Jabalina-46	13.57	La Escoba-376	8.74	La milpa-121	10.70	Las trozas-24	9.90
Jabalina-47	12.50	La Escoba-40	23.29	La milpa-123	10.88	Las trozas-25	9.76
Jabalina-48	11.14	La Escoba-48	23.03	La milpa-124	10.89	Las trozas-4	11.39
Jabalina-49	14.63	La Escoba-50	20.80	La milpa-125	11.36	Las trozas-7	10.79
Jabalina-50	12.91	La Escoba-56	22.93	La milpa-127	11.90	Majaste 2-337	9.92
Jabalina-51	13.84	La Escoba-59	20.11	La milpa-128	11.07	Majaste 2-338	11.34
Jabalina-52	14.34	La Escoba-60	20.06	La milpa-129	10.71	Majaste 2-339	11.02
Jabalina-53	12.02	La Escoba-61	19.63	La milpa-131	10.78	Majaste 2-340	11.06
Jabalina-54	12.86	La Escoba-62	22.63	La milpa-134	10.75	Majaste 2-341	8.86
Jabalina-55	11.29	La Escoba-63	20.43	La milpa-138	10.24	Majaste 2-342	14.63
Jabalina-56	15.84	La Escoba-64	21.93	La milpa-139	10.52	Majaste-100	14.43
Jabalina-58	15.14	La Escoba-65	23.83	La milpa-140	10.52	Majaste-101	12.50
Jabalinita 2-334	9.50	La Escoba-68	21.34	La milpa-149	10.80	Majaste-102	13.65
Jabalinita 2-335	7.14	La Escoba-71	17.47	La milpa-401	11.11	Majaste-103	15.13
Jabalinita 2-336	7.85	La Escoba-73	20.09	La milpa-404	5.13	Majaste-104	15.37
Jabalinita-384	11.29	La Escoba-74	18.21	La milpa-406	6.73	Majaste-105	15.67

Jabalinita-388	10.15	La Escoba-75	19.72	La milpa-74	9.76	Majaste-106	12.15
Jabalinita-62	15.25	La Escoba-76	20.29	La milpa-75	9.78	Majaste-109	17.04
Jabalinita-63	12.12	La Escoba-77	19.27	La milpa-77	10.10	Majaste-110	14.55
Jabalinita-64	11.66	La Horqueta-10	19.33	La milpa-84	10.36	Majaste-81	14.68
Jabalinita-65	13.96	La Horqueta-11	12.47	La milpa-86	12.90	Majaste-82	14.58
Jabalinita-66	12.12	La Horqueta-14	21.42	La milpa-96	11.23	Majaste-83	16.11
Jabalinita-67	14.63	La Horqueta-17	19.46	La milpa-99	11.02	Majaste-84	13.87
Jabalinita-68	12.33	La Horqueta-19	22.72	La Presa-103	17.86	Majaste-85	12.98
Jabalinita-69	13.69	La Horqueta-20	19.55	La presa-159	15.60	Majaste-86	13.16
Jabalinita-70	12.98	La Horqueta-21	17.45	La presa-160	19.24	Majaste-87	12.73
Jabalinita-71	13.28	La Horqueta-25	18.58	La presa-161	17.22	Majaste-88	13.86
Jabalinita-72	11.81	La Horqueta-26	20.26	La presa-162	18.95	Majaste-89	13.53
Jabalinita-73	13.63	La horqueta-383	8.52	La presa-165	14.89	Majaste-91	13.10
Jabalinita-74	14.31	La laguna-1	12.30	La presa-166	18.82	Majaste-92	12.01
Jabalinita-76	13.54	La laguna-14	12.52	La presa-168	16.65	Majaste-93	14.44
Jabalinita-77	12.32	La laguna-16	13.99	La presa-170	17.79	Majaste-94	16.52
La Cruz-12	19.76	La laguna-8	11.32	La presa-171	19.97	Majaste-95	14.16
La Cruz-13	18.07	La milpa-100	11.73	La presa-172	18.06	Majaste-97	15.22
La Cruz-16	18.89	La milpa-101	10.39	La presa-173	19.19	Majaste-98	13.91
La Cruz-2	17.82	La milpa-102	11.50	La presa-177	18.21	Majaste-99	16.70
La Cruz-28	19.97	La milpa-103	10.67	La presa-178	15.64	Majastito-111	15.23
La Cruz-29	20.45	La milpa-104	11.06	La presa-181	21.01	Majastito-113	14.50
La Cruz-3	19.92	La milpa-106	12.15	La presa-182	19.89	Majastito-114	12.03
La Cruz-30	17.45	La milpa-107	10.13	La presa-183	16.61	Majastito-115	11.72
La Cruz-31	19.02	La milpa-108	11.92	La Presa-389	8.00	Majastito-116	11.16
La Cruz-33	19.61	La milpa-109	9.43	La Presa-390	7.17	Majastito-117	14.68
La Cruz-34	19.09	La milpa-110	11.80	La Presa-391	8.59	Rancho-387	8.56
La Cruz-35	22.04	La milpa-111	10.52	Las trozas-15	10.11	Rancho-390	4.89
Majastito-118	10.83	Pozo-5	14.93	Patio-370	14.61	Sitio 2-321	15.62
Majastito-120	13.42	Pozo-6	15.19	Patio-371	12.75	Sitio 2-354	11.37
Majastito-121	13.48	Pozo-7	15.97	Patio-372	15.30	Sitio 2-365	15.82
Majastito-122	13.65	Pozo-8	15.82	Patio-373	10.79	Sitio 2-366	15.74
Majastito-123	10.89	Pozo-9	16.54	Patio-374	13.29	Sitio 2-367	15.13
Majastito-124	11.77	Rancho-128	14.86	Patio-375	10.05	Sitio 2-370	15.50
Majastito-125	12.08	Rancho-129	14.09	Patio-376	11.97	Escondido-395	0.00
Majastito-126	11.90	Rancho-130	12.52	Patio-377	11.37	Escondido-396	0.00
Majastito-127	11.12	Rancho-132	14.04	Patio-378	15.21		
Majastito-385	9.36	Rancho-133	13.54	Patio-379	11.23		
Majastito-386	9.28	Rancho-135	12.47	Patio-380	11.82		
Majastito-389	7.99	Rancho-136	12.55	Patio-381	14.54		
Patio-344	16.04	Rancho-137	12.47	Pozo-1	12.89		
Patio-345	14.64	Rancho-138	14.75	Pozo-11	13.56		

Patio-346	14.19	Rancho-140	16.25	Pozo-12	14.03
Patio-347	12.28	Rancho-141	14.26	Pozo-13	11.79
Patio-349	15.74	Rancho-143	15.48	Pozo-14	14.77
Patio-350	13.27	Rancho-144	14.13	Pozo-15	15.42
Patio-352	15.76	Rancho-148	14.75	Pozo-2	14.47
Patio-353	14.08	Rancho-149	13.40	Pozo-3	12.34
Patio-355	15.57	Rancho-150	12.24	Rancho-161	15.18
Patio-356	7.91	Rancho-151	15.10	Rancho-162	14.36
Patio-359	9.13	Rancho-152	14.46	Rancho-163	12.16
Patio-361	14.26	Rancho-153	14.67	Rancho-164	12.78
Patio-363	10.94	Rancho-155	15.24	Rancho-165	14.69
Patio-365	12.69	Rancho-156	13.11	Rancho-166	13.93
Patio-366	12.42	Rancho-157	15.16	Rancho-168	17.71
Patio-367	11.06	Rancho-158	14.89	Rancho-169	14.95
Patio-368	15.96	Rancho-159	13.81	Rancho-170	14.66
Patio-369	11.93	Rancho-160	14.03	Rancho-171	15.66

ANNEX # 7 ABOVE GROUND BIOMASS CALCULATED IN PLOTS

SID	Kg/ha of dry matter	SID	Kg/ha of dry matter	SID	Kg/ha of dry matter	SID	Kg/ha of dry matter
Ceiba 1-173	48543	Corral-244	3123	El genizaro 2004-85	41261	El pozo esperanza-27	55794
Ceiba 1-174	56325	Corral-245	6383	El genizaro 2004-95	59942	El pozo esperanza-29	46777
Ceiba 1-175	37825	Corral-246	16784	El guabo-400	35422	El pozo esperanza-33	37105
Ceiba 1-176	51263	Corral-247	14667	El guabo-402	26680	El pozo esperanza-34	46663
Ceiba 1-177	56766	Corral-248	4986	El guabo-407	45557	El pozo esperanza-41	47525
Ceiba 1-178	23236	Corral-250	7144	El guabo-60	21523	El pozo esperanza-43	41901
Ceiba 1-179	35679	El Campamento-378	4535	El guabo-63	38985	El pozo esperanza-44	39240
Ceiba 1-180	26348	El Campamento-42	80477	El guabo-66	38540	El pozo esperanza-45	58172
Ceiba 1-181	39912	El Campamento-46	64422	El guabo-69	43203	El pozo esperanza-46	40074
Ceiba 1-182	29584	El Campamento-49	81826	El guabo-70	32261	El pozo esperanza-47	39029
Ceiba 1-183	76195	El Campamento-51	66831	El guabo-78	16686	El pozo pimienta-379	5887
Ceiba 1-184	19859	El Campamento-52	59715	El guabo-79	40648	El pozo pimienta-382	17478
Ceiba 1-185	39133	El Chaguite-15	88239	El guabo-87	31731	El pozo pimienta-47	136205
Ceiba 1-186	49547	El Chaguite-18	82870	El guabo-88	29669	El pozo pimienta-53	73893
Ceiba 1-187	78317	El Chaguite-22	91836	El guarumo-35	39570	El pozo pimienta-54	67310
Ceiba 1-188	83250	El Chaguite-23	96408	El guarumo-36	26737	El pozo pimienta-55	70341
Ceiba 1-189	82553	El Chaguite-24	104206	El guarumo-37	18907	El pozo pimienta-57	59304
Ceiba 1-190	64604	El Chaguite-27	78676	El guarumo-39	27614	El pozo pimienta-58	84280
Ceiba 1-191	80376	El Chaguite-38	106804	El lagarto -105	47830	El pozo pimienta-67	55142
Ceiba 2-192	65224	El chaguite-381	10882	El lagarto-113	41309	El pozo pimienta-70	47151
Ceiba 2-193	56480	El Chaguite-4	118512	El lagarto-119	37858	El pozo pimienta-72	60503
Ceiba 2-194	68486	El Chaguite-5	71973	El Miralagos-117	98498	El puente-126	32006
Ceiba 2-195	46070	El Chaguite-7	69755	El Miralagos-118	66056	El puente-130	33780
Ceiba 2-196	48820	El Chaguite-8	73027	El Miralagos-119	82205	El puente-132	44815
Ceiba 2-197	78267	El comando-405	23558	El Miralagos-122	115299	El puente-133	39929
Ceiba 2-198	54099	El comando-55	28156	El Miralagos-123	80164	El puente-135	43155
Ceiba 2-199	12084	El comando-57	30274	El Miralagos-125	47117	El puente-136	31479
Ceiba 2-200	51269	El comando-68	34634	El Miralagos-126	57012	El puente-137	35064
Ceiba 2-201	23221	El comando-71	34100	El Miralagos-127	99448	El puente-141	50190
Ceiba 2-202	65688	El comando-82	31735	El Miralagos-128	111861	El puente-143	34720
Ceiba 2-203	34603	El comando-98	32443	El Miralagos-129	49202	El puente-144	39379
Ceiba 2-204	81957	El coyote-38	44766	El Miralagos-243	66262	El puente-145	39223
Ceiba 2-205	24121	El coyote-40	48066	El Miralagos-248	117067	El puente-146	28234
Ceiba 2-206	47862	El Cuido-198	77905	El Mojòn-114	95327	El puente-147	35700
Ceiba 2-391	3331	EL Cuido-215	80183	El Mojòn-124	63845	El puente-148	36209
Ceiba 3-207	64731	El Cuido-225	69870	El Mojòn-130	81746	El Rincòn-120	49276
Ceiba 3-208	32006	El Cuido-231	52642	El Mojòn-132	61884	El Rincòn-145	84170
Ceiba 3-209	45391	El Cuido-234	102076	El Mojòn-133	76786	El Rincòn-146	94718

Ceiba 3-210	85794	El Cuido-236	86413	El Mojòn-134	37212	El Rótulo-288	44665
Ceiba 3-211	71740	El Cuido-245	66734	El Mojòn-140	59801	El Rótulo-289	31033
Ceiba 3-212	59136	El Cuido-250	39831	El Mojòn-143	88192	El Rótulo-380	12543
Ceiba 3-213	41520	El Cuido-251	67475	El Mojòn-149	64916	El Sitio-107	89833
Ceiba 3-214	43339	El Cuido-252	83251	El Mojòn-151	40415	El Sitio-164	50770
Ceiba 3-215	69636	El Cuido-263	59520	El Mojòn-152	78444	El Sitio-174	107129
Ceiba 3-216	30477	El Cuido-264	82649	El Mojòn-277	68549	El Sitio-175	76715
Ceiba 3-217	67861	El Cuido-271	39307	El Mojòn-392	12899	El Sitio-176	73853
Ceiba 3-218	42594	El Cuido-275	62435	El nancite-403	36388	El Sitio-180	108594
Ceiba 3-219	55839	El Cuido-384	17007	El nancite-42	30419	El Sitio-216	119829
Ceiba 3-220	68352	El cuzuco-48	18446	El nancite-53	32925	El Sitio-279	54890
Ceiba 3-221	69481	El Dos-169	49771	El nancite-54	33585	El Uno-211	64943
Ceiba 3-222	35638	El Dos-190	56517	El nancite-56	37282	El Uno-217	93447
Ceiba 3-223	46734	El Dos-193	66365	El nancite-58	32305	El Uno-218	82451
Ceiba 3-224	56831	El Dos-195	83976	El nancite-59	28542	El Uno-220	80223
Ceiba 3-225	68379	El Dos-196	54395	El nancite-61	26706	El Uno-223	87974
Ceiba 3-226	42790	El Dos-201	82081	El nancite-62	21109	El Uno-224	38284
Ceiba 3-227	43150	El Dos-203	91188	El nancite-64	19377	El Uno-228	98603
Ceiba 3-392	13559	El Dos-206	70718	El nancite-65	40356	El Uno-230	57202
Ceiba 3-393	15841	El Dos-207	76569	El nancite-67	34665	El Uno-235	78557
Corral-228	43196	El Dos-208	68219	El nancite-73	15618	El Uno-237	118157
Corral-229	42346	El Dos-209	73673	El nancite-80	29214	El Uno-242	96475
Corral-230	40966	El Dos-212	93269	El nancite-81	23618	El Uno-244	128573
Corral-231	41632	El Dos-213	59012	El nancite-89	19889	El Uno-246	95113
Corral-232	17683	El Dos-214	48019	El nancite-90	23116	El Uno-249	109243
Corral-233	28172	El Dos-222	69271	El nancite-91	26664	El Uno-256	100930
Corral-234	5587	El Dos-388	15673	El nancite-92	28111	El Uno-258	70655
Corral-235	44113	El Esfuerzo-290	102652	El nancite-93	26157	El Uno-260	48338
Corral-236	31905	El Esfuerzo-291	109257	El nancite-94	25338	El Uno-261	39980
Corral-237	44620	El Esfuerzo-292	119705	El nancite-97	25246	El Uno-385	107945
Corral-238	25045	El Esfuerzo-293	49880	El porton-377	26556	El Uno-387	40654
Corral-239	13521	El Esfuerzo-294	84387	El Porton-66	90400	Escondidito-251	61226
Corral-240	26759	El Esfuerzo-295	85767	El Porton-69	57741	Escondidito-253	21564
Corral-241	24699	El Esfuerzo-296	75334	El Porton-78	83546	Escondidito-255	8358
Corral-242	17945	El genizaro 2004-76	55932	El Porton-79	87047	Escondidito-256	7865
Corral-243	11079	El genizaro 2004-83	59645	El pozo esperanza-26	51485	Escondidito-257	13623
Escondidito-258	7914	Genizaro-326	35817	La Cruz-31	71652	La milpa-404	4215
Escondidito-260	17172	Genizaro-397	33086	La Cruz-33	77019	La milpa-406	12357
Escondidito-261	43608	Genizaro-398	18811	La Cruz-34	86030	La milpa-74	24359
Escondido-263	73354	Jabalina-18	58463	La Cruz-35	92067	La milpa-75	21667
Escondido-264	23840	Jabalina-19	57147	La Cruz-36	99423	La milpa-77	18878
Escondido-265	61831	Jabalina-20	59477	La Cruz-39	84699	La milpa-84	26478

Escondido-267	34388	Jabalina-21	56626	La Cruz-43	83637	La milpa-86	50044
Escondido-268	4914	Jabalina-23	62552	La Cruz-44	60728	La milpa-96	34035
Escondido-269	47145	Jabalina-24	84655	La Cruz-45	83607	La milpa-99	34420
Escondido-270	8531	Jabalina-25	63775	La Cruz-9	77265	La Presa-103	93894
Escondido-271	15247	Jabalina-26	66357	La Escoba-376	13376	La presa-159	65901
Escondido-273	43765	Jabalina-28	54314	La Escoba-40	115971	La presa-160	101665
Escondido-275	15761	Jabalina-29	40471	La Escoba-48	91438	La presa-161	83384
Escondido-276	6968	Jabalina-30	52401	La Escoba-50	97068	La presa-162	98015
Escondido-278	6283	Jabalina-31	66145	La Escoba-56	101165	La presa-165	53323
Escondido-279	9668	Jabalina-32	73916	La Escoba-59	77890	La presa-166	99725
Escondido-281	17188	Jabalina-33	67662	La Escoba-60	100630	La presa-168	52179
Escondido-284	41246	Jabalina-35	45952	La Escoba-61	77197	La presa-170	66864
Escondido-285	18831	Jabalina-36	93004	La Escoba-62	128952	La presa-171	103466
Escondido-286	8546	Jabalina-37	56010	La Escoba-63	88933	La presa-172	81345
Escondido-287	47034	Jabalina-38	53487	La Escoba-64	100566	La presa-173	94083
Escondido-394	6328	Jabalina-382	23380	La Escoba-65	110880	La presa-177	89206
Frontera-104	67569	Jabalina-383	5053	La Escoba-68	139097	La presa-178	74864
Frontera-106	52680	Jabalina-39	69950	La Escoba-71	47353	La presa-181	112357
Frontera-109	59507	Jabalina-40	51277	La Escoba-73	58256	La presa-182	117566
Frontera-111	105972	Jabalina-41	27661	La Escoba-74	58380	La presa-183	54326
Frontera-121	80737	Jabalina-42	39549	La Escoba-75	92969	La Presa-389	13435
Frontera-139	96503	Jabalina-43	31874	La Escoba-76	67659	La Presa-390	24056
Frontera-144	57017	Jabalina-46	62597	La Escoba-77	66831	La Presa-391	26159
Frontera-229	66240	Jabalina-47	50143	La Horqueta-10	56717	Las trozas-15	25719
Frontera-287	57730	Jabalina-48	27665	La Horqueta-11	27438	Las trozas-17	35271
Frontera-80	60887	Jabalina-49	62084	La Horqueta-14	90474	Las trozas-18	33090
Frontera-82	55049	Jabalina-50	50093	La Horqueta-17	61257	Las trozas-19	35836
Frontera-83	53188	Jabalina-51	49565	La Horqueta-19	98912	Las trozas-2	24252
Frontera-86	24805	Jabalina-52	69612	La Horqueta-20	69203	Las trozas-20	30143
Frontera-88	53848	Jabalina-53	41167	La Horqueta-21	52756	Las trozas-21	31383
Frontera-89	87301	Jabalina-54	36244	La Horqueta-25	77361	Las trozas-22	22988
Frontera-90	89367	Jabalina-55	53195	La Horqueta-26	79234	Las trozas-23	31178
Frontera-91	93014	Jabalina-56	103673	La horqueta-383	29239	Las trozas-24	21617
Frontera-92	56736	Jabalina-58	73224	La laguna-1	43492	Las trozas-25	25079
Frontera-93	25980	Jabalinita 2-328	12148	La laguna-14	44108	Las trozas-4	34152
Frontera-97	97478	Jabalinita 2-329	34740	La laguna-16	57415	Las trozas-7	31791
Frontera-98	60520	Jabalinita 2-330	26534	La laguna-8	36630	Majaste 2-337	38368
Genizaro-288	41999	Jabalinita 2-331	31734	La milpa-100	34496	Majaste 2-338	52729
Genizaro-289	47237	Jabalinita 2-332	30462	La milpa-101	32330	Majaste 2-339	43653
Genizaro-290	19112	Jabalinita 2-333	23075	La milpa-102	42221	Majaste 2-340	41260
Genizaro-291	50042	Jabalinita 2-334	30657	La milpa-103	32673	Majaste 2-341	22668
Genizaro-292	14729	Jabalinita 2-335	8938	La milpa-104	29069	Majaste 2-342	76674

Genizaro-293	51246	Jabalinita 2-336	7457	La milpa-106	43355	Majaste-100	74201
Genizaro-294	40542	Jabalinita-384	39382	La milpa-107	31174	Majaste-101	50143
Genizaro-295	30706	Jabalinita-388	34391	La milpa-108	47074	Majaste-102	52639
Genizaro-296	32741	Jabalinita-62	84692	La milpa-109	23103	Majaste-103	83064
Genizaro-297	24151	Jabalinita-63	58336	La milpa-110	40471	Majaste-104	69775
Genizaro-299	10572	Jabalinita-64	54251	La milpa-111	32455	Majaste-105	88180
Genizaro-300	21650	Jabalinita-65	68529	La milpa-112	39358	Majaste-106	50437
Genizaro-301	18221	Jabalinita-66	66510	La milpa-115	46222	Majaste-109	89218
Genizaro-302	43798	Jabalinita-67	71225	La milpa-116	37894	Majaste-110	73822
Genizaro-303	27322	Jabalinita-68	54664	La milpa-117	41521	Majaste-81	73548
Genizaro-304	23480	Jabalinita-69	76405	La milpa-118	21438	Majaste-82	65153
Genizaro-305	12604	Jabalinita-70	49368	La milpa-120	41442	Majaste-83	78094
Genizaro-306	29853	Jabalinita-71	71040	La milpa-121	36427	Majaste-84	73994
Genizaro-307	31664	Jabalinita-72	54801	La milpa-123	33364	Majaste-85	56256
Genizaro-308	30431	Jabalinita-73	46288	La milpa-124	35274	Majaste-86	41122
Genizaro-309	29054	Jabalinita-74	62350	La milpa-125	36944	Majaste-87	48484
Genizaro-310	20845	Jabalinita-76	60662	La milpa-127	46873	Majaste-88	44938
Genizaro-311	19984	Jabalinita-77	53292	La milpa-128	36633	Majaste-89	59075
Genizaro-312	13806	La Cruz-12	89621	La milpa-129	33886	Majaste-91	61784
Genizaro-313	15299	La Cruz-13	63401	La milpa-131	37933	Majaste-92	33107
Genizaro-314	45895	La Cruz-16	73778	La milpa-134	35043	Majaste-93	69016
Genizaro-315	38282	La Cruz-2	73039	La milpa-138	29684	Majaste-94	90189
Genizaro-317	13144	La Cruz-28	88044	La milpa-139	29123	Majaste-95	60833
Genizaro-319	12019	La Cruz-29	93199	La milpa-140	34093	Majaste-97	76223
Genizaro-322	16578	La Cruz-3	79992	La milpa-149	31003	Majaste-98	79284
Genizaro-325	7787	La Cruz-30	63905	La milpa-401	42651	Majaste-99	107537
Majastito-111	78285	Patio-366	30917	Rancho-132	52932	Rancho-387	31567
Majastito-113	80381	Patio-367	15953	Rancho-133	50058	Rancho-390	1874
Majastito-114	27460	Patio-368	56175	Rancho-135	47371	Sitio 2-321	59715
Majastito-115	26928	Patio-369	40423	Rancho-136	46834	Sitio 2-354	17023
Majastito-116	37345	Patio-370	16377	Rancho-137	27461	Sitio 2-365	87895
Majastito-117	53389	Patio-371	34224	Rancho-138	68818	Sitio 2-366	89131
Majastito-118	30293	Patio-372	52768	Rancho-140	51604	Sitio 2-367	75129.30566
Majastito-120	46035	Patio-373	36220	Rancho-141	65290	Sitio 2-370	77530.6851
Majastito-121	55581	Patio-374	23247	Rancho-143	73116	Escondido-395	0.00
Majastito-122	69647	Patio-375	30587	Rancho-144	68908	Escondido-396	0.00
Majastito-123	32537	Patio-376	69020	Rancho-148	55805		
Majastito-124	36991	Patio-377	33039	Rancho-149	48891		
Majastito-125	42828	Patio-378	66039	Rancho-150	36966		
Majastito-126	24575	Patio-379	36974	Rancho-151	43267		
Majastito-127	38970	Patio-380	46095	Rancho-152	55072		
Majastito-385	15112	Patio-381	50386	Rancho-153	47791		

Majastito-386	30255	Pozo-1	59411	Rancho-155	70414
Majastito-389	13817	Pozo-11	41148	Rancho-156	46376
Patio-344	65884	Pozo-12	54491	Rancho-157	55636
Patio-345	84059	Pozo-13	37079	Rancho-158	66669
Patio-346	52589	Pozo-14	50417	Rancho-159	52521
Patio-347	46904	Pozo-15	82692	Rancho-160	49560
Patio-349	73817	Pozo-2	71095	Rancho-161	63758
Patio-350	62209	Pozo-3	52343	Rancho-162	64657
Patio-352	19600	Pozo-5	70848	Rancho-163	37572
Patio-353	59956	Pozo-6	71915	Rancho-164	39707
Patio-355	71957	Pozo-7	83184	Rancho-165	64466
Patio-356	11407	Pozo-8	76966	Rancho-166	47135
Patio-359	11858	Pozo-9	100265	Rancho-168	97850
Patio-361	68661	Rancho-128	58769	Rancho-169	46124
Patio-363	11870	Rancho-129	56754	Rancho-170	56873
Patio-365	55961	Rancho-130	40272	Rancho-171	72933

ANNEX # 8 CARBON STOCK IN ABOVE GROUND BIOMASS CALCULATED IN PLOTS

SID	Carbon Stocks AGB t C/ha)	SID	Carbon Stocks AGB t C/ha)	SID	Carbon Stocks AGB t C/ha)	SID	Carbon Stocks AGB t C/ha)
Ceiba 1-173	24	Corral-244	2	El genizaro 2004-85	21	El pozo esperanza-27	28
Ceiba 1-174	28	Corral-245	3	El genizaro 2004-95	30	El pozo esperanza-29	23
Ceiba 1-175	19	Corral-246	8	El guabo-400	18	El pozo esperanza-33	19
Ceiba 1-176	26	Corral-247	7	El guabo-402	13	El pozo esperanza-34	23
Ceiba 1-177	28	Corral-248	2	El guabo-407	23	El pozo esperanza-41	24
Ceiba 1-178	12	Corral-250	4	El guabo-60	11	El pozo esperanza-43	21
Ceiba 1-179	18	El Campamento-378	2	El guabo-63	19	El pozo esperanza-44	20
Ceiba 1-180	13	El Campamento-42	40	El guabo-66	19	El pozo esperanza-45	29
Ceiba 1-181	20	El Campamento-46	32	El guabo-69	22	El pozo esperanza-46	20
Ceiba 1-182	15	El Campamento-49	41	El guabo-70	16	El pozo esperanza-47	20
Ceiba 1-183	38	El Campamento-51	33	El guabo-78	8	El pozo pimienta-379	3
Ceiba 1-184	10	El Campamento-52	30	El guabo-79	20	El pozo pimienta-382	9
Ceiba 1-185	20	El Chaguite-15	44	El guabo-87	16	El pozo pimienta-47	68
Ceiba 1-186	25	El Chaguite-18	41	El guabo-88	15	El pozo pimienta-53	37
Ceiba 1-187	39	El Chaguite-22	46	El guarumo-35	20	El pozo pimienta-54	34
Ceiba 1-188	42	El Chaguite-23	48	El guarumo-36	13	El pozo pimienta-55	35
Ceiba 1-189	41	El Chaguite-24	52	El guarumo-37	9	El pozo pimienta-57	30
Ceiba 1-190	32	El Chaguite-27	39	El guarumo-39	14	El pozo pimienta-58	42
Ceiba 1-191	40	El Chaguite-38	53	El lagarto -105	24	El pozo pimienta-67	28
Ceiba 2-192	33	El chaguite-381	5	El lagarto-113	21	El pozo pimienta-70	24
Ceiba 2-193	28	El Chaguite-4	59	El lagarto-119	19	El pozo pimienta-72	30
Ceiba 2-194	34	El Chaguite-5	36	El Miralagos-117	49	El puente-126	16
Ceiba 2-195	23	El Chaguite-7	35	El Miralagos-118	33	El puente-130	17
Ceiba 2-196	24	El Chaguite-8	37	El Miralagos-119	41	El puente-132	22
Ceiba 2-197	39	El comando-405	12	El Miralagos-122	58	El puente-133	20
Ceiba 2-198	27	El comando-55	14	El Miralagos-123	40	El puente-135	22
Ceiba 2-199	6	El comando-57	15	El Miralagos-125	24	El puente-136	16
Ceiba 2-200	26	El comando-68	17	El Miralagos-126	29	El puente-137	18
Ceiba 2-201	12	El comando-71	17	El Miralagos-127	50	El puente-141	25
Ceiba 2-202	33	El comando-82	16	El Miralagos-128	56	El puente-143	17
Ceiba 2-203	17	El comando-98	16	El Miralagos-129	25	El puente-144	20
Ceiba 2-204	41	El coyote-38	22	El Miralagos-243	33	El puente-145	20
Ceiba 2-205	12	El coyote-40	24	El Miralagos-248	59	El puente-146	14
Ceiba 2-206	24	El Cuido-198	39	El Mojòn-114	48	El puente-147	18
Ceiba 2-391	2	EL Cuido-215	40	El Mojòn-124	32	El puente-148	18
Ceiba 3-207	32	El Cuido-225	35	El Mojòn-130	41	El Rincòn-120	25
Ceiba 3-208	16	El Cuido-231	26	El Mojòn-132	31	El Rincòn-145	42
Ceiba 3-209	23	El Cuido-234	51	El Mojòn-133	38	El Rincòn-146	47

Ceiba 3-210	43	El Cuido-236	43	El Mojòn-134	19	El Rótulo-288	22
Ceiba 3-211	36	El Cuido-245	33	El Mojòn-140	30	El Rótulo-289	16
Ceiba 3-212	30	El Cuido-250	20	El Mojòn-143	44	El Rótulo-380	6
Ceiba 3-213	21	El Cuido-251	34	El Mojòn-149	32	El Sitio-107	45
Ceiba 3-214	22	El Cuido-252	42	El Mojòn-151	20	El Sitio-164	25
Ceiba 3-215	35	El Cuido-263	30	El Mojòn-152	39	El Sitio-174	54
Ceiba 3-216	15	El Cuido-264	41	El Mojòn-277	34	El Sitio-175	38
Ceiba 3-217	34	El Cuido-271	20	El Mojòn-392	6	El Sitio-176	37
Ceiba 3-218	21	El Cuido-275	31	El nancite-403	18	El Sitio-180	54
Ceiba 3-219	28	El Cuido-384	9	El nancite-42	15	El Sitio-216	60
Ceiba 3-220	34	El cuzuco-48	9	El nancite-53	16	El Sitio-279	27
Ceiba 3-221	35	El Dos-169	25	El nancite-54	17	El Uno-211	32
Ceiba 3-222	18	El Dos-190	28	El nancite-56	19	El Uno-217	47
Ceiba 3-223	23	El Dos-193	33	El nancite-58	16	El Uno-218	41
Ceiba 3-224	28	El Dos-195	42	El nancite-59	14	El Uno-220	40
Ceiba 3-225	34	El Dos-196	27	El nancite-61	13	El Uno-223	44
Ceiba 3-226	21	El Dos-201	41	El nancite-62	11	El Uno-224	19
Ceiba 3-227	22	El Dos-203	46	El nancite-64	10	El Uno-228	49
Ceiba 3-392	7	El Dos-206	35	El nancite-65	20	El Uno-230	29
Ceiba 3-393	8	El Dos-207	38	El nancite-67	17	El Uno-235	39
Corral-228	22	El Dos-208	34	El nancite-73	8	El Uno-237	59
Corral-229	21	El Dos-209	37	El nancite-80	15	El Uno-242	48
Corral-230	20	El Dos-212	47	El nancite-81	12	El Uno-244	64
Corral-231	21	El Dos-213	30	El nancite-89	10	El Uno-246	48
Corral-232	9	El Dos-214	24	El nancite-90	12	El Uno-249	55
Corral-233	14	El Dos-222	35	El nancite-91	13	El Uno-256	50
Corral-234	3	El Dos-388	8	El nancite-92	14	El Uno-258	35
Corral-235	22	El Esfuerzo-290	51	El nancite-93	13	El Uno-260	24
Corral-236	16	El Esfuerzo-291	55	El nancite-94	13	El Uno-261	20
Corral-237	22	El Esfuerzo-292	60	El nancite-97	13	El Uno-385	54
Corral-238	13	El Esfuerzo-293	25	El porton-377	13	El Uno-387	20
Corral-239	7	El Esfuerzo-294	42	El Porton-66	45	Escondido-251	31
Corral-240	13	El Esfuerzo-295	43	El Porton-69	29	Escondido-253	11
Corral-241	12	El Esfuerzo-296	38	El Porton-78	42	Escondido-255	4
Corral-242	9	El genizaro 2004-76	28	El Porton-79	44	Escondido-256	4
Corral-243	6	El genizaro 2004-83	30	El pozo esperanza-26	26	Escondido-257	7
Escondido-258	4	Genizaro-326	18	La Cruz-31	36	La milpa-404	2
Escondido-260	9	Genizaro-397	17	La Cruz-33	39	La milpa-406	6
Escondido-261	22	Genizaro-398	9	La Cruz-34	43	La milpa-74	12
Escondido-263	37	Jabalina-18	29	La Cruz-35	46	La milpa-75	11
Escondido-264	12	Jabalina-19	29	La Cruz-36	50	La milpa-77	9
Escondido-265	31	Jabalina-20	30	La Cruz-39	42	La milpa-84	13

Escondido-267	17	Jabalina-21	28	La Cruz-43	42	La milpa-86	25
Escondido-268	2	Jabalina-23	31	La Cruz-44	30	La milpa-96	17
Escondido-269	24	Jabalina-24	42	La Cruz-45	42	La milpa-99	17
Escondido-270	4	Jabalina-25	32	La Cruz-9	39	La Presa-103	47
Escondido-271	8	Jabalina-26	33	La Escoba-376	7	La presa-159	33
Escondido-273	22	Jabalina-28	27	La Escoba-40	58	La presa-160	51
Escondido-275	8	Jabalina-29	20	La Escoba-48	46	La presa-161	42
Escondido-276	3	Jabalina-30	26	La Escoba-50	49	La presa-162	49
Escondido-278	3	Jabalina-31	33	La Escoba-56	51	La presa-165	27
Escondido-279	5	Jabalina-32	37	La Escoba-59	39	La presa-166	50
Escondido-281	9	Jabalina-33	34	La Escoba-60	50	La presa-168	26
Escondido-284	21	Jabalina-35	23	La Escoba-61	39	La presa-170	33
Escondido-285	9	Jabalina-36	47	La Escoba-62	64	La presa-171	52
Escondido-286	4	Jabalina-37	28	La Escoba-63	44	La presa-172	41
Escondido-287	24	Jabalina-38	27	La Escoba-64	50	La presa-173	47
Escondido-394	3	Jabalina-382	12	La Escoba-65	55	La presa-177	45
Frontera-104	34	Jabalina-383	3	La Escoba-68	70	La presa-178	37
Frontera-106	26	Jabalina-39	35	La Escoba-71	24	La presa-181	56
Frontera-109	30	Jabalina-40	26	La Escoba-73	29	La presa-182	59
Frontera-111	53	Jabalina-41	14	La Escoba-74	29	La presa-183	27
Frontera-121	40	Jabalina-42	20	La Escoba-75	46	La Presa-389	7
Frontera-139	48	Jabalina-43	16	La Escoba-76	34	La Presa-390	12
Frontera-144	29	Jabalina-46	31	La Escoba-77	33	La Presa-391	13
Frontera-229	33	Jabalina-47	25	La Horqueta-10	28	Las trozas-15	13
Frontera-287	29	Jabalina-48	14	La Horqueta-11	14	Las trozas-17	18
Frontera-80	30	Jabalina-49	31	La Horqueta-14	45	Las trozas-18	17
Frontera-82	28	Jabalina-50	25	La Horqueta-17	31	Las trozas-19	18
Frontera-83	27	Jabalina-51	25	La Horqueta-19	49	Las trozas-2	12
Frontera-86	12	Jabalina-52	35	La Horqueta-20	35	Las trozas-20	15
Frontera-88	27	Jabalina-53	21	La Horqueta-21	26	Las trozas-21	16
Frontera-89	44	Jabalina-54	18	La Horqueta-25	39	Las trozas-22	11
Frontera-90	45	Jabalina-55	27	La Horqueta-26	40	Las trozas-23	16
Frontera-91	47	Jabalina-56	52	La horqueta-383	15	Las trozas-24	11
Frontera-92	28	Jabalina-58	37	La laguna-1	22	Las trozas-25	13
Frontera-93	13	Jabalinita 2-328	6	La laguna-14	22	Las trozas-4	17
Frontera-97	49	Jabalinita 2-329	17	La laguna-16	29	Las trozas-7	16
Frontera-98	30	Jabalinita 2-330	13	La laguna-8	18	Majaste 2-337	19
Genizaro-288	21	Jabalinita 2-331	16	La milpa-100	17	Majaste 2-338	26
Genizaro-289	24	Jabalinita 2-332	15	La milpa-101	16	Majaste 2-339	22
Genizaro-290	10	Jabalinita 2-333	12	La milpa-102	21	Majaste 2-340	21
Genizaro-291	25	Jabalinita 2-334	15	La milpa-103	16	Majaste 2-341	11
Genizaro-292	7	Jabalinita 2-335	4	La milpa-104	15	Majaste 2-342	38

Genizaro-293	26	Jabalinita-2-336	4	La milpa-106	22	Majaste-100	37
Genizaro-294	20	Jabalinita-384	20	La milpa-107	16	Majaste-101	25
Genizaro-295	15	Jabalinita-388	17	La milpa-108	24	Majaste-102	26
Genizaro-296	16	Jabalinita-62	42	La milpa-109	12	Majaste-103	42
Genizaro-297	12	Jabalinita-63	29	La milpa-110	20	Majaste-104	35
Genizaro-299	5	Jabalinita-64	27	La milpa-111	16	Majaste-105	44
Genizaro-300	11	Jabalinita-65	34	La milpa-112	20	Majaste-106	25
Genizaro-301	9	Jabalinita-66	33	La milpa-115	23	Majaste-109	45
Genizaro-302	22	Jabalinita-67	36	La milpa-116	19	Majaste-110	37
Genizaro-303	14	Jabalinita-68	27	La milpa-117	21	Majaste-81	37
Genizaro-304	12	Jabalinita-69	38	La milpa-118	11	Majaste-82	33
Genizaro-305	6	Jabalinita-70	25	La milpa-120	21	Majaste-83	39
Genizaro-306	15	Jabalinita-71	36	La milpa-121	18	Majaste-84	37
Genizaro-307	16	Jabalinita-72	27	La milpa-123	17	Majaste-85	28
Genizaro-308	15	Jabalinita-73	23	La milpa-124	18	Majaste-86	21
Genizaro-309	15	Jabalinita-74	31	La milpa-125	18	Majaste-87	24
Genizaro-310	10	Jabalinita-76	30	La milpa-127	23	Majaste-88	22
Genizaro-311	10	Jabalinita-77	27	La milpa-128	18	Majaste-89	30
Genizaro-312	7	La Cruz-12	45	La milpa-129	17	Majaste-91	31
Genizaro-313	8	La Cruz-13	32	La milpa-131	19	Majaste-92	17
Genizaro-314	23	La Cruz-16	37	La milpa-134	18	Majaste-93	35
Genizaro-315	19	La Cruz-2	37	La milpa-138	15	Majaste-94	45
Genizaro-317	7	La Cruz-28	44	La milpa-139	15	Majaste-95	30
Genizaro-319	6	La Cruz-29	47	La milpa-140	17	Majaste-97	38
Genizaro-322	8	La Cruz-3	40	La milpa-149	16	Majaste-98	40
Genizaro-325	4	La Cruz-30	32	La milpa-401	21	Majaste-99	54
Majastito-111	39	Patio-366	15	Rancho-132	26	Rancho-387	16
Majastito-113	40	Patio-367	8	Rancho-133	25	Rancho-390	1
Majastito-114	14	Patio-368	28	Rancho-135	24	Sitio 2-321	30
Majastito-115	13	Patio-369	20	Rancho-136	23	Sitio 2-354	9
Majastito-116	19	Patio-370	8	Rancho-137	14	Sitio 2-365	44
Majastito-117	27	Patio-371	17	Rancho-138	34	Sitio 2-366	45
Majastito-118	15	Patio-372	26	Rancho-140	26	Sitio 2-367	38
Majastito-120	23	Patio-373	18	Rancho-141	33	Sitio 2-370	39
Majastito-121	28	Patio-374	12	Rancho-143	37	Escondido-395	0
Majastito-122	35	Patio-375	15	Rancho-144	34	Escondido-396	0
Majastito-123	16	Patio-376	35	Rancho-148	28		
Majastito-124	18	Patio-377	17	Rancho-149	24		
Majastito-125	21	Patio-378	33	Rancho-150	18		
Majastito-126	12	Patio-379	18	Rancho-151	22		
Majastito-127	19	Patio-380	23	Rancho-152	28		
Majastito-385	8	Patio-381	25	Rancho-153	24		

Majastito-386	15	Pozo-1	30	Rancho-155	35
Majastito-389	7	Pozo-11	21	Rancho-156	23
Patio-344	33	Pozo-12	27	Rancho-157	28
Patio-345	42	Pozo-13	19	Rancho-158	33
Patio-346	26	Pozo-14	25	Rancho-159	26
Patio-347	23	Pozo-15	41	Rancho-160	25
Patio-349	37	Pozo-2	36	Rancho-161	32
Patio-350	31	Pozo-3	26	Rancho-162	32
Patio-352	10	Pozo-5	35	Rancho-163	19
Patio-353	30	Pozo-6	36	Rancho-164	20
Patio-355	36	Pozo-7	42	Rancho-165	32
Patio-356	6	Pozo-8	38	Rancho-166	24
Patio-359	6	Pozo-9	50	Rancho-168	49
Patio-361	34	Rancho-128	29	Rancho-169	23
Patio-363	6	Rancho-129	28	Rancho-170	28
Patio-365	28	Rancho-130	20	Rancho-171	36

ANNEX # 9 CARBON STOCK IN BELOW GROUND BIOMASS CALCULATED IN PLOTS

SID	Carbon Stocks BGB t C/ha)	SID	Carbon Stocks BGB t C/ha)	SID	Carbon Stocks BGB t C/ha)	SID	Carbon Stocks BGB t C/ha)
Ceiba 1-173	6	Corral-244	0	El genizaro 2004-85	5	El pozo esperanza-27	7
Ceiba 1-174	7	Corral-245	1	El genizaro 2004-95	7	El pozo esperanza-29	6
Ceiba 1-175	5	Corral-246	2	El guabo-400	5	El pozo esperanza-33	5
Ceiba 1-176	6	Corral-247	2	El guabo-402	4	El pozo esperanza-34	6
Ceiba 1-177	7	Corral-248	1	El guabo-407	6	El pozo esperanza-41	6
Ceiba 1-178	3	Corral-250	1	El guabo-60	3	El pozo esperanza-43	5
Ceiba 1-179	5	El Campamento-378	1	El guabo-63	5	El pozo esperanza-44	5
Ceiba 1-180	3	El Campamento-42	10	El guabo-66	5	El pozo esperanza-45	7
Ceiba 1-181	5	El Campamento-46	8	El guabo-69	6	El pozo esperanza-46	5
Ceiba 1-182	4	El Campamento-49	10	El guabo-70	4	El pozo esperanza-47	5
Ceiba 1-183	9	El Campamento-51	8	El guabo-78	2	El pozo pimienta-379	1
Ceiba 1-184	3	El Campamento-52	7	El guabo-79	5	El pozo pimienta-382	2
Ceiba 1-185	5	El Chaguite-15	11	El guabo-87	4	El pozo pimienta-47	16
Ceiba 1-186	6	El Chaguite-18	10	El guabo-88	4	El pozo pimienta-53	9
Ceiba 1-187	10	El Chaguite-22	11	El guarumo-35	5	El pozo pimienta-54	8
Ceiba 1-188	10	El Chaguite-23	12	El guarumo-36	4	El pozo pimienta-55	9
Ceiba 1-189	10	El Chaguite-24	12	El guarumo-37	3	El pozo pimienta-57	7
Ceiba 1-190	8	El Chaguite-27	10	El guarumo-39	4	El pozo pimienta-58	10
Ceiba 1-191	10	El Chaguite-38	13	El lagarto -105	6	El pozo pimienta-67	7
Ceiba 2-192	8	El chaguite-381	2	El lagarto-113	5	El pozo pimienta-70	6
Ceiba 2-193	7	El Chaguite-4	14	El lagarto-119	5	El pozo pimienta-72	8
Ceiba 2-194	8	El Chaguite-5	9	El Miralagos-117	12	El puente-126	4
Ceiba 2-195	6	El Chaguite-7	9	El Miralagos-118	8	El puente-130	4
Ceiba 2-196	6	El Chaguite-8	9	El Miralagos-119	10	El puente-132	6
Ceiba 2-197	10	El comando-405	3	El Miralagos-122	14	El puente-133	5
Ceiba 2-198	7	El comando-55	4	El Miralagos-123	10	El puente-135	6
Ceiba 2-199	2	El comando-57	4	El Miralagos-125	6	El puente-136	4
Ceiba 2-200	6	El comando-68	4	El Miralagos-126	7	El puente-137	5
Ceiba 2-201	3	El comando-71	4	El Miralagos-127	12	El puente-141	6
Ceiba 2-202	8	El comando-82	4	El Miralagos-128	13	El puente-143	5
Ceiba 2-203	4	El comando-98	4	El Miralagos-129	6	El puente-144	5
Ceiba 2-204	10	El coyote-38	6	El Miralagos-243	8	El puente-145	5
Ceiba 2-205	3	El coyote-40	6	El Miralagos-248	14	El puente-146	4
Ceiba 2-206	6	El Cuido-198	10	El Mojòn-114	11	El puente-147	5
Ceiba 2-391	1	EL Cuido-215	10	El Mojòn-124	8	El puente-148	5
Ceiba 3-207	8	El Cuido-225	9	El Mojòn-130	10	El Rincòn-120	6
Ceiba 3-208	4	El Cuido-231	7	El Mojòn-132	8	El Rincòn-145	10
Ceiba 3-209	6	El Cuido-234	12	El Mojòn-133	9	El Rincòn-146	11

Ceiba 3-210	10	El Cuido-236	10	El Mojòn-134	5	El Rótulo-288	6
Ceiba 3-211	9	El Cuido-245	8	El Mojòn-140	7	El Rótulo-289	4
Ceiba 3-212	7	El Cuido-250	5	El Mojòn-143	11	El Rótulo-380	2
Ceiba 3-213	5	El Cuido-251	8	El Mojòn-149	8	El Sitio-107	11
Ceiba 3-214	6	El Cuido-252	10	El Mojòn-151	5	El Sitio-164	6
Ceiba 3-215	9	El Cuido-263	7	El Mojòn-152	10	El Sitio-174	13
Ceiba 3-216	4	El Cuido-264	10	El Mojòn-277	8	El Sitio-175	9
Ceiba 3-217	8	El Cuido-271	5	El Mojòn-392	2	El Sitio-176	9
Ceiba 3-218	5	El Cuido-275	8	El nancite-403	5	El Sitio-180	13
Ceiba 3-219	7	El Cuido-384	2	El nancite-42	4	El Sitio-216	14
Ceiba 3-220	8	El cuzuco-48	3	El nancite-53	4	El Sitio-279	7
Ceiba 3-221	9	El Dos-169	6	El nancite-54	4	El Uno-211	8
Ceiba 3-222	5	El Dos-190	7	El nancite-56	5	El Uno-217	11
Ceiba 3-223	6	El Dos-193	8	El nancite-58	4	El Uno-218	10
Ceiba 3-224	7	El Dos-195	10	El nancite-59	4	El Uno-220	10
Ceiba 3-225	8	El Dos-196	7	El nancite-61	4	El Uno-223	11
Ceiba 3-226	5	El Dos-201	10	El nancite-62	3	El Uno-224	5
Ceiba 3-227	6	El Dos-203	11	El nancite-64	3	El Uno-228	12
Ceiba 3-392	2	El Dos-206	9	El nancite-65	5	El Uno-230	7
Ceiba 3-393	2	El Dos-207	9	El nancite-67	4	El Uno-235	10
Corral-228	6	El Dos-208	8	El nancite-73	2	El Uno-237	14
Corral-229	5	El Dos-209	9	El nancite-80	4	El Uno-242	12
Corral-230	5	El Dos-212	11	El nancite-81	3	El Uno-244	15
Corral-231	5	El Dos-213	7	El nancite-89	3	El Uno-246	11
Corral-232	2	El Dos-214	6	El nancite-90	3	El Uno-249	13
Corral-233	4	El Dos-222	9	El nancite-91	4	El Uno-256	12
Corral-234	1	El Dos-388	2	El nancite-92	4	El Uno-258	9
Corral-235	6	El Esfuerzo-290	12	El nancite-93	3	El Uno-260	6
Corral-236	4	El Esfuerzo-291	13	El nancite-94	3	El Uno-261	5
Corral-237	6	El Esfuerzo-292	14	El nancite-97	3	El Uno-385	13
Corral-238	3	El Esfuerzo-293	6	El porton-377	4	El Uno-387	5
Corral-239	2	El Esfuerzo-294	10	El Porton-66	11	Escondidito-251	8
Corral-240	4	El Esfuerzo-295	10	El Porton-69	7	Escondidito-253	3
Corral-241	3	El Esfuerzo-296	9	El Porton-78	10	Escondidito-255	1
Corral-242	2	El genizaro 2004-76	7	El Porton-79	11	Escondidito-256	1
Corral-243	2	El genizaro 2004-83	7	El pozo esperanza-26	6	Escondidito-257	2
Escondidito-258	1	Genizaro-326	5	La Cruz-31	9	La milpa-404	1
Escondidito-260	2	Genizaro-397	4	La Cruz-33	9	La milpa-406	2
Escondidito-261	6	Genizaro-398	3	La Cruz-34	10	La milpa-74	3
Escondido-263	9	Jabalina-18	7	La Cruz-35	11	La milpa-75	3
Escondido-264	3	Jabalina-19	7	La Cruz-36	12	La milpa-77	3
Escondido-265	8	Jabalina-20	7	La Cruz-39	10	La milpa-84	4

Escondido-267	4	Jabalina-21	7	La Cruz-43	10	La milpa-86	6
Escondido-268	1	Jabalina-23	8	La Cruz-44	8	La milpa-96	4
Escondido-269	6	Jabalina-24	10	La Cruz-45	10	La milpa-99	4
Escondido-270	1	Jabalina-25	8	La Cruz-9	9	La Presa-103	11
Escondido-271	2	Jabalina-26	8	La Escoba-376	2	La presa-159	8
Escondido-273	6	Jabalina-28	7	La Escoba-40	14	La presa-160	12
Escondido-275	2	Jabalina-29	5	La Escoba-48	11	La presa-161	10
Escondido-276	1	Jabalina-30	7	La Escoba-50	12	La presa-162	12
Escondido-278	1	Jabalina-31	8	La Escoba-56	12	La presa-165	7
Escondido-279	1	Jabalina-32	9	La Escoba-59	10	La presa-166	12
Escondido-281	2	Jabalina-33	8	La Escoba-60	12	La presa-168	7
Escondido-284	5	Jabalina-35	6	La Escoba-61	9	La presa-170	8
Escondido-285	3	Jabalina-36	11	La Escoba-62	15	La presa-171	12
Escondido-286	1	Jabalina-37	7	La Escoba-63	11	La presa-172	10
Escondido-287	6	Jabalina-38	7	La Escoba-64	12	La presa-173	11
Escondido-394	1	Jabalina-382	3	La Escoba-65	13	La presa-177	11
Frontera-104	8	Jabalina-383	1	La Escoba-68	16	La presa-178	9
Frontera-106	7	Jabalina-39	9	La Escoba-71	6	La presa-181	13
Frontera-109	7	Jabalina-40	6	La Escoba-73	7	La presa-182	14
Frontera-111	13	Jabalina-41	4	La Escoba-74	7	La presa-183	7
Frontera-121	10	Jabalina-42	5	La Escoba-75	11	La Presa-389	2
Frontera-139	12	Jabalina-43	4	La Escoba-76	8	La Presa-390	3
Frontera-144	7	Jabalina-46	8	La Escoba-77	8	La Presa-391	3
Frontera-229	8	Jabalina-47	6	La Horqueta-10	7	Las trozas-15	3
Frontera-287	7	Jabalina-48	4	La Horqueta-11	4	Las trozas-17	5
Frontera-80	8	Jabalina-49	8	La Horqueta-14	11	Las trozas-18	4
Frontera-82	7	Jabalina-50	6	La Horqueta-17	8	Las trozas-19	5
Frontera-83	7	Jabalina-51	6	La Horqueta-19	12	Las trozas-2	3
Frontera-86	3	Jabalina-52	9	La Horqueta-20	9	Las trozas-20	4
Frontera-88	7	Jabalina-53	5	La Horqueta-21	7	Las trozas-21	4
Frontera-89	11	Jabalina-54	5	La Horqueta-25	9	Las trozas-22	3
Frontera-90	11	Jabalina-55	7	La Horqueta-26	10	Las trozas-23	4
Frontera-91	11	Jabalina-56	12	La horqueta-383	4	Las trozas-24	3
Frontera-92	7	Jabalina-58	9	La laguna-1	6	Las trozas-25	3
Frontera-93	3	Jabalinita 2-328	2	La laguna-14	6	Las trozas-4	4
Frontera-97	12	Jabalinita 2-329	5	La laguna-16	7	Las trozas-7	4
Frontera-98	8	Jabalinita 2-330	4	La laguna-8	5	Majaste 2-337	5
Genizaro-288	5	Jabalinita 2-331	4	La milpa-100	4	Majaste 2-338	7
Genizaro-289	6	Jabalinita 2-332	4	La milpa-101	4	Majaste 2-339	6
Genizaro-290	3	Jabalinita 2-333	3	La milpa-102	5	Majaste 2-340	5
Genizaro-291	6	Jabalinita 2-334	4	La milpa-103	4	Majaste 2-341	3
Genizaro-292	2	Jabalinita 2-335	1	La milpa-104	4	Majaste 2-342	9

Genizaro-293	6	Jabalinita 2-336	1	La milpa-106	6	Majaste-100	9
Genizaro-294	5	Jabalinita-384	5	La milpa-107	4	Majaste-101	6
Genizaro-295	4	Jabalinita-388	4	La milpa-108	6	Majaste-102	7
Genizaro-296	4	Jabalinita-62	10	La milpa-109	3	Majaste-103	10
Genizaro-297	3	Jabalinita-63	7	La milpa-110	5	Majaste-104	9
Genizaro-299	1	Jabalinita-64	7	La milpa-111	4	Majaste-105	11
Genizaro-300	3	Jabalinita-65	8	La milpa-112	5	Majaste-106	6
Genizaro-301	2	Jabalinita-66	8	La milpa-115	6	Majaste-109	11
Genizaro-302	6	Jabalinita-67	9	La milpa-116	5	Majaste-110	9
Genizaro-303	4	Jabalinita-68	7	La milpa-117	5	Majaste-81	9
Genizaro-304	3	Jabalinita-69	9	La milpa-118	3	Majaste-82	8
Genizaro-305	2	Jabalinita-70	6	La milpa-120	5	Majaste-83	10
Genizaro-306	4	Jabalinita-71	9	La milpa-121	5	Majaste-84	9
Genizaro-307	4	Jabalinita-72	7	La milpa-123	4	Majaste-85	7
Genizaro-308	4	Jabalinita-73	6	La milpa-124	5	Majaste-86	5
Genizaro-309	4	Jabalinita-74	8	La milpa-125	5	Majaste-87	6
Genizaro-310	3	Jabalinita-76	8	La milpa-127	6	Majaste-88	6
Genizaro-311	3	Jabalinita-77	7	La milpa-128	5	Majaste-89	7
Genizaro-312	2	La Cruz-12	11	La milpa-129	4	Majaste-91	8
Genizaro-313	2	La Cruz-13	8	La milpa-131	5	Majaste-92	4
Genizaro-314	6	La Cruz-16	9	La milpa-134	5	Majaste-93	9
Genizaro-315	5	La Cruz-2	9	La milpa-138	4	Majaste-94	11
Genizaro-317	2	La Cruz-28	11	La milpa-139	4	Majaste-95	8
Genizaro-319	2	La Cruz-29	11	La milpa-140	4	Majaste-97	9
Genizaro-322	2	La Cruz-3	10	La milpa-149	4	Majaste-98	10
Genizaro-325	1	La Cruz-30	8	La milpa-401	5	Majaste-99	13
Majastito-111	10	Patio-366	4	Rancho-132	7	Rancho-387	4
Majastito-113	10	Patio-367	2	Rancho-133	6	Rancho-390	0
Majastito-114	4	Patio-368	7	Rancho-135	6	Sitio 2-321	7
Majastito-115	4	Patio-369	5	Rancho-136	6	Sitio 2-354	2
Majastito-116	5	Patio-370	2	Rancho-137	4	Sitio 2-365	11
Majastito-117	7	Patio-371	4	Rancho-138	8	Sitio 2-366	11
Majastito-118	4	Patio-372	7	Rancho-140	7	Sitio 2-367	9
Majastito-120	6	Patio-373	5	Rancho-141	8	Sitio 2-370	9
Majastito-121	7	Patio-374	3	Rancho-143	9	Escondido-395	0
Majastito-122	9	Patio-375	4	Rancho-144	8	Escondido-396	0
Majastito-123	4	Patio-376	9	Rancho-148	7		
Majastito-124	5	Patio-377	4	Rancho-149	6		
Majastito-125	5	Patio-378	8	Rancho-150	5		
Majastito-126	3	Patio-379	5	Rancho-151	6		
Majastito-127	5	Patio-380	6	Rancho-152	7		
Majastito-385	2	Patio-381	6	Rancho-153	6		

Majastito-386	4	Pozo-1	7	Rancho-155	9
Majastito-389	2	Pozo-11	5	Rancho-156	6
Patio-344	8	Pozo-12	7	Rancho-157	7
Patio-345	10	Pozo-13	5	Rancho-158	8
Patio-346	7	Pozo-14	6	Rancho-159	7
Patio-347	6	Pozo-15	10	Rancho-160	6
Patio-349	9	Pozo-2	9	Rancho-161	8
Patio-350	8	Pozo-3	7	Rancho-162	8
Patio-352	3	Pozo-5	9	Rancho-163	5
Patio-353	7	Pozo-6	9	Rancho-164	5
Patio-355	9	Pozo-7	10	Rancho-165	8
Patio-356	2	Pozo-8	9	Rancho-166	6
Patio-359	2	Pozo-9	12	Rancho-168	12
Patio-361	8	Rancho-128	7	Rancho-169	6
Patio-363	2	Rancho-129	7	Rancho-170	7
Patio-365	7	Rancho-130	5	Rancho-171	9