



**Monitoring report form
(Version 04.0)**

MONITORING REPORT

Title of the project activity	Shenyang Laohuchong LFG Power Generation Project
Reference number of the project activity	1906
Version number of the monitoring report	01
Completion date of the monitoring report	25/09/2014
Registration date of the project activity	25/12/2008
Monitoring period number and duration of this monitoring period	01/08/2011- 31/07/2014
Project participant(s)	Shenyang Laohuchong Municipal Solid Waste Management Co. Ltd. Asja Ambiente Italia S.p.A. ICF - International Clean Fund LLC
Host Party(ies)	China
Sectoral scope and selected methodology(ies), and where applicable, applied standardized baseline(s)	Sectoral scope : 1-Energy industry(renewable and non-renewable sources);13-waste handling and disposal Methodology: ACM0001(Version 06) ;ACM0002(Version 06)
Estimated amount of GHG emission reductions or net anthropogenic GHG removals by sinks for this monitoring period in the registered PDD	391,189 tCO ₂ e
Actual GHG emission reductions or net anthropogenic GHG removals by sinks achieved in this monitoring period	353,617 tCO ₂ e
Actual GHG emission reductions or net anthropogenic GHG removals by sinks achieved during the period up to 31 December 2012(if applicable)	166,140 tCO ₂ e
Actual GHG emission reductions or net anthropogenic GHG removals by sinks achieved during the period from 1 January 2013 onwards (if applicable).	187,477 tCO ₂ e

SECTION A. Description of project activity

A.1. Purpose and general description of project activity

>>

1. The purpose of the project capturing and burning biogas, generating electricity, at the Shenyang Laohuchong Municipal Solid Waste Landfill.
The greenhouse gas emissions reduction is realized through the destruction of methane contained in the biogas arising from the landfill which is fed into both electricity generation system and high temperature flare, and by avoiding consumptions of fossil fuel which should have been used to generate electricity (according to the local Grid Emission Factor) substituted by the electricity generated in the biogas plant (renewable source) during a crediting period of 10 years.
2. The process includes LFG collecting, pre-treatment, power generation and flare combustion systems. The power plant is connected to local grid (North East Electric Power Grid) through transformer substation system. The whole process is managed by an electrical control system which is provided with a PLC (Programmable Logical Controller). All measured process signals are processed by the PLC to output signals for the gas-coolers, blower and flares.
3. The project is designed to have at its final stage an installed power of 3 MW (6 × 0.5 MW LFG power generators) and two flares of 2,000Nm³/h. During this monitoring period, five power generators with a capacity of 2.5MW (5 × 0.5) and one flare are mounted and operating. The starting date of construction was on Jul.1, 2007, the LFG flaring system was put into operation since October 18, 2007 and the operation of the LFG power generation system (3 × 0.5, including 1#, 2# and 3# generator) started on March 4, 2008, 4# and 5# generator were put into operation on March 27, 2012. The last generator will be installed as soon as the flow of the biogas will be high and stable enough to guarantee suitable working conditions.
The leachate is treated by the landfill owner.
4. Total emission reductions achieved in this monitoring period is 353,617 ton CO₂eq.

A.2. Location of project activity

>>

This project is located in Tashan Farm, Chenxiang Town, Su Jiatun District, Shenyang, Liaoning, People's Republic of China, with the GPS coordinates of 41°33' N and 123°34' E.

A.3. Parties and project participant(s)

Party involved (host) indicates a host Party)	Private and/or public entity(ies) project participants (as applicable)	Indicate if the Party involved wishes to be considered as project participant (Yes/No)
China (host)	Shenyang Laohuchong Municipal Solid Waste Management Co. Ltd. (Public Entity)	No
Italy	Asja Ambiente Italia S.p.A. (Private Entity)	No
Switzerland	ICF - International Clean Fund LLC	No

A.4. Reference of applied methodology and standardized baseline

>>

Approved monitoring methodology and tools applied to this projects:

ACM0001 - Version 6: "Consolidated baseline methodology for landfill gas project activity"

ACM0002 - Version 6: "Consolidated baseline methodology for grid-connected electricity generation from renewable sources"

Tool for the demonstration and assessment of additionality - Version 4
 Tool to determine project emissions from flaring gases containing methane

A.5. Crediting period of project activity

>>

The Crediting period of this project activity is 25 December 2008 - 24 December 2018 (Fixed).

A.6. Contact information of responsible persons/ entities

>>

The monitoring report is completed in September 2011, and the responsible persons are:

Cui jianshuang, Diao Xianlan
 Asja Renewables (shenyang) Co., Ltd
 Address: Shenyang LN, P.R. China
 Tel:+86 24.23 987210
 Fax: +86 24.23 987133
 Email: c.cui@ asja.cn, xl.diao@ asja.cn

SECTION B. Implementation of project activity

B.1. Description of implemented registered project activity

>>

There were no events or situations occurred during the monitoring period, which impacted the applicability of the methodology.

B.2. Post registration changes

B.2.1. Temporary deviations from registered monitoring plan, applied methodology or applied standardized baseline

>>

N/A

B.2.2. Corrections

>>

N/A

B.2.3. Permanent changes from registered monitoring plan, applied methodology or applied standardized baseline

>>

N/A

B.2.4. Changes to project design of registered project activity

>>

N/A

B.2.5. Changes to start date of crediting period

>>

The start date of the crediting period has been changed from Jan 1st, 09 into December 25, 2008 and it has been accepted by the Board

B.2.6. Types of changes specific to afforestation or reforestation project activity

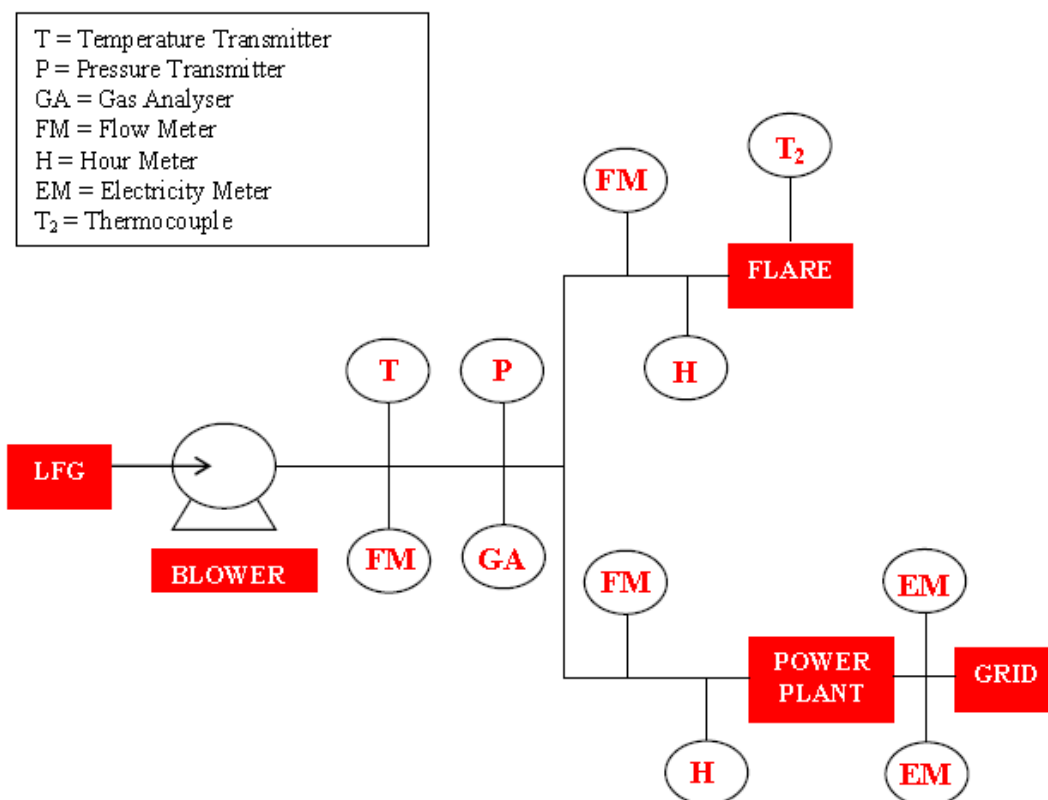
>>

N/A

SECTION C. Description of monitoring system

>>

In order to determine the quantity of ERs generated during the project activity, the equipment shown in the following scheme (PDD Monitoring Plan) is installed.



The equipment of the analysing station and also the system equipments of the entire plant is connected through a Programmable Logic Controller (PLC) that let the operator quickly check the unit main variables through a user-friendly interface.

The system collects on a continuous basis the signals from the instruments equipping the main biogas lines, the suction station, the pressurised line going to the burning section and the generating sets.

Monitoring operating parameters on a continuous basis ensures the optimal management of the plant and the correct operation of the various devices installed (valves, blowers, etc.).

THE MONITORED DATA

According to the Monitoring Plan, the PLC system is designed to ensure the monitoring of the following main parameters:

- Landfill gas collected from project wells in the main line, LFG_{total}
- Landfill gas flow into flare, LFG_{flare}
- Landfill gas flow into power plant, LFG_{electricity}
- Methane in the landfill gas
- Temperature of flaring exhaust gas
- Operation of the energy plant and flare

Other operating parameter necessary to calculate the amount of ERs generated, manually recorded in specific forms (and confirmed by the official bills), are:

- Electricity imported from the power grid.
- Electricity exported to the power grid.

Besides, the local and national regulatory framework is also monitored.

Landfill gas flow, temperature and pressure

Landfill gas flow is measured by means of flow meters. Three flow meters are installed, one to measure the LFG flow into the flare, another one for the LFG flowing into the group of the three engines and another one in order to measure the total landfill gas collected from project wells. For reporting purposes, these parameters are required to be normalized to 0°C and 1.01325bar. In order to normalize the volume measured by the flow meter to a standard temperature and pressure, a temperature transmitter and a pressure transmitter are used. These transmitters are integrated in each of the three flow meters, so that the value read on the display and the signal sent to the PLC are already normalized. According to the methodology ACM0001 version 06 (pag.14) “no separate monitoring of temperature and pressure is necessary when using flow meters that automatically measure temperature and pressure, expressing LFG volumes in normalized cubic meters.”

Temperature of the flare

N-type thermocouple is installed in the flare at 80% of its height as per the “*tool to determine project emissions from flaring gases containing methane*”(pag.13) and it is directly connected to the PLC.

Methane content in the landfill gas

Methane content in the landfill gas is measured by a gas analyzer with an infrared ray system analysis, with a scale range of 0-100 %Vol. The analyzer is directly connected to the PLC.

Operation of the energy plant and flares

The PLC counts the working hours of both the generating set and the flare.

Electricity exported to the power grid

Electricity exported to power grid is measured by a sealed energy meter. Since electricity meters belong and are managed by the Power Supply Company, the amount of electricity is proven by official electricity invoices.

At midnight of every first day of the month, an operator writes down the values shown in the meter. The internal record is sent to Liaoning Power Grid Corporation via fax. After their confirmation and rounding, the related invoice is issued. Therefore the internal records, the Power Company records and the invoices (except for the rounding) always match.

Electricity imported from the power grid

Electricity imported from the power grid is measured by 2 sealed energy meters, which are installed on the low voltage side after the transformer connected to the plant access point of Xiaobu circuit of local grid (North East Electric Power Grid). Since electricity meters belong and are managed by the Power Supply Co., the amount of electricity is proven by official electricity invoices. Once a month, usually during the first days, the workers of the Power Company come to read the power meters. Since they record these values together with our workers, the internal records always match with the records of the Power Company and the invoices.

The consumption calculation is based on the invoices and for the beginning and the end of the monitoring period, a conservative approach has been used.

Local and national regulatory framework

The local and national regulatory framework (related to the project) is monitored in order to verify that the project complies with the local and national regulation.

Emissions from flaring

The project proposed has adopted the default value for the flare efficiency for the enclosed flares of 90% according to the *“tool to determine project emissions from flaring gases containing methane”*.

DATA MANAGEMENT SYSTEM (from the instruments to the monitoring sheets)

The PLC receives continuously the signals from all the monitoring instruments and shows the values on its touch-screen. This means that all the parameters are continuously monitored and available on-site. The PLC is directly connected to a Factory Data Storage system, hereinafter referred to as FDS. The PLC sends to the FDS all the monitored values. This industrial software for management of operating data, FDS, records every 5 minutes the values of all the monitored parameters and archives these values in a safe database. The database is accessible only through the FDS interface that allows only to read and to download the recorded data. This is to avoid any accidental loss or modification of the recorded data.

In summary, the signals flow from the instruments into a safe database in a complete automatic way, with no manual operations:

Instruments → PLC → FDS

Moreover, FDS automatically puts the monitored data onto a spreadsheet (onto its first sheet, called “rawdata”) created by Asja.biz for the calculation of the **Emissions Reduction due to methane destruction** and makes available all the needed reports with the daily and monthly amount of CERs. This spreadsheet for the MD calculation (also referred to as the “master”) follows the formula as per the methodological *“tool to determine project emissions from flaring gases containing methane”* and it is available for the DOE. The monitored data and the calculated CERs are aggregated hourly, monthly and yearly in a standard format for reporting purposes (see the attached Monitoring sheet).

Instruments → PLC → FDS → MD Calculation Spreadsheet → Monitoring sheets

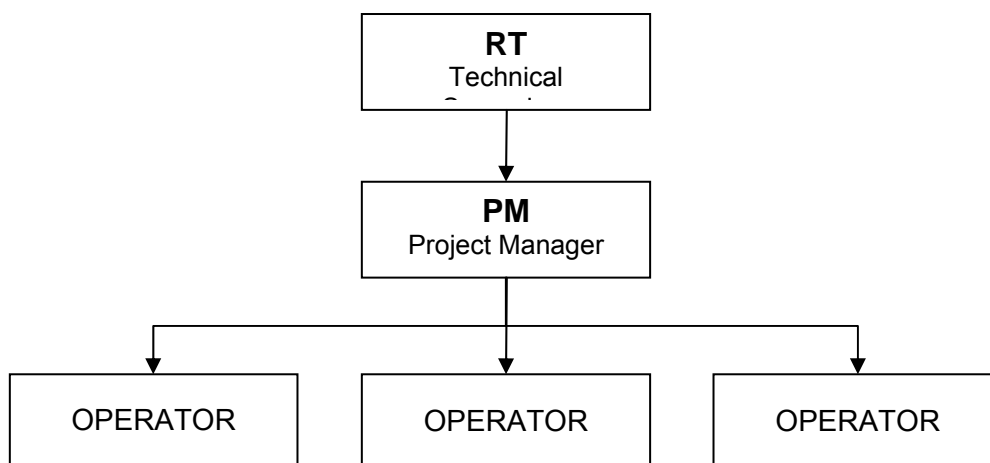
All these operations are completely automatic and safe, and a declaration of the FDS company is available.

All the FDS system and its data are continuously stored also in a back-up system in a portable hard-disk (mirroring).

Besides the FDS database, a document control system has been implemented to ensure that the monitored data and all the necessary documents (such as operation manual, drawings, maintenance and calibration instructions, etc.) are available and stored in a proper manner. Monitored data (rawdata) and Monitoring Sheets (monthly reports), both downloaded from FDS, are copied to magnetic media every month and stored in appropriate archives. All data, including calibration records and Monitoring Reports, will be kept until 2 years after the crediting period.

MONITORING ORGANIZATION

The plant is run by operators and by a project manager (PM) in charge of the necessary activities and checks. A technical responsible (RT) carries out the required checks on the plant on a periodic basis. **The PM is responsible for the maintenance and calibration of all the monitoring instruments and, therefore, for the proper working of the monitoring system.**



Technical Supervisor:

- Li Wei

Project Manager:

- Pan Libo

Workers:

- Jin Chunqiao
- Li Baobin
- Yao Gang
- Gao Debin
- Lv Huicao
- Li Mingyan

To assure a correct monitoring, the staff is trained on the following subjects:

- General knowledge about the equipment used in the landfill
- Reading and recording data
- Calibration methodology
- Emergency situation

A manual in English and Chinese with all the procedures for a correct management of the plant is always available on-site. This manual for plant management has:

- Description of the main parts of the equipment
- Maintenance instructions
- Calibration procedures
- Useful phone numbers

EMERGENCY PREPAREDNESS

Management of data not logged

Management of flow data not logged because of a failure

To reduce the time during which flow values cannot be logged because of a failure, the flow counter will be replaced with a spare unit as quickly as possible. In any case, there will be a brief time interval during which the system works without flow signals being received. In order to determine the flow during this time interval, the average flow value over the last 7 days of normal operation before the failure is used.

Management of gas analyzer data not logged because of a failure

To reduce the time during which the methane percentage values in the biogas cannot be logged because of a failure, the analyzer will be replaced with a spare unit as quickly as possible. In any

case, there will be time interval during which the system works without the signals being received. In order to determine the percentage values during this time window, the average value over the last 7 days of normal operation before the failure is used.

Management of gas analyzer data not logged because of a calibration

Every month an internal calibration of the fixed analyzer is carried out. When it is not possible to find a more suitable period, the calibration occurs during the plant working. In this case, the responsible disconnects the fixed analyzer from PLC to avoid that during the calibration the analyzer, still connected to PLC, makes FDS automatically calculate CERs, in case of the biogas analyzer, according to the methane content of sample gas (above 90%), and not according to the actual content of LFG (around 50%). Disconnecting the analyzer, the PLC (and therefore FDS) reads a value of zero for the methane content. In this way, the plant is still operating but CERs calculated in this calibration period are zero.

Possible failure: No electrical power

When there is no electrical power the blower of the degassing installation cannot operate, so no landfill gas stream is available. No special actions are possible to avoid this. Therefore, when a black out occurs, no CERs are claimed.

SECTION D. Data and parameters

D.1. Data and parameters fixed ex ante or at renewal of crediting period

(Copy this table for each piece of data and parameter.)

Data / Parameter:	GWP_{CH_4}
Unit:	tCO_{2e}/tCH_4
Description:	Global Warming Potential value for methane
Source of data:	Revised 1996 IPCC Guideline for National Greenhouse Gas Inventory
Value(s) applied:	21
Purpose of data:	Used for baseline emission calculation
Additional comment:	

Data / Parameter:	$\rho_{CH_4,n,h}$
Unit:	tCH_4/m^3CH_4
Description:	Density of methane gas at normal conditions
Source of data:	<i>Tool to determine project emissions from flaring gases containing methane</i>
Value(s) applied:	0.0007168
Purpose of data:	Used for baseline emission calculation
Additional comment:	

Data / Parameter:	$CEF_{elec,y}$
Unit:	tCO_2/MWh
Description:	The emission factor of northeast electric power grid
Source of data:	<i>Data published by China DNA on http://cdm.ccchina.gov.cn</i>
Value(s) applied:	1.05176
Purpose of data:	Used for both baseline and project emission calculations
Additional comment:	

Data / Parameter:	Local and national regulatory framework															
Unit:																
Description:	Law and regulations about waste management systems in China															
Source of data:	<i>Data published by China DNA</i>															
Value(s) applied:	<table border="1"> <thead> <tr> <th>Regulation reference</th><th>Regulation</th><th>Impact</th><th>Date of application</th></tr> </thead> <tbody> <tr> <td>GB16889-1997</td><td>"Standard for Pollution Control on the Landfill Site of Municipal Solid Waste"</td><td>Included in PDD</td><td>01-Jan-98</td></tr> <tr> <td>GB16889-2008</td><td>"Standard for Pollution Control on the Landfill Site of Municipal Solid Waste"</td><td>No impact on parameters monitored during the current crediting period. The methodology requires the impacts of new regulations to be considered at the renewal of the crediting period. The project has a fixed crediting period of 10 years and will not be renewed. Furthermore, the regulation is an E-type regulation according Annex 3 of EB 22.</td><td>01-Jul-08</td></tr> </tbody> </table>				Regulation reference	Regulation	Impact	Date of application	GB16889-1997	"Standard for Pollution Control on the Landfill Site of Municipal Solid Waste"	Included in PDD	01-Jan-98	GB16889-2008	"Standard for Pollution Control on the Landfill Site of Municipal Solid Waste"	No impact on parameters monitored during the current crediting period. The methodology requires the impacts of new regulations to be considered at the renewal of the crediting period. The project has a fixed crediting period of 10 years and will not be renewed. Furthermore, the regulation is an E-type regulation according Annex 3 of EB 22.	01-Jul-08
Regulation reference	Regulation	Impact	Date of application													
GB16889-1997	"Standard for Pollution Control on the Landfill Site of Municipal Solid Waste"	Included in PDD	01-Jan-98													
GB16889-2008	"Standard for Pollution Control on the Landfill Site of Municipal Solid Waste"	No impact on parameters monitored during the current crediting period. The methodology requires the impacts of new regulations to be considered at the renewal of the crediting period. The project has a fixed crediting period of 10 years and will not be renewed. Furthermore, the regulation is an E-type regulation according Annex 3 of EB 22.	01-Jul-08													
Purpose of data:	Used for baseline emission calculation															
Additional comment:																

D.2. Data and parameters monitored

(Copy this table for each piece of data and parameter.)

Data / Parameter:	LFG _{total,y}
Unit:	Nm ³
Description:	Total amount of landfill gas captured
Measured/ Calculated / Default:	<i>Measured</i>
Source of data:	<i>Flow meter</i>
Value(s) of monitored parameter:	42,393,746

Monitoring equipment:	Flow meter Type: Annubar 485 Accuracy class: $\pm 0.9\%$ Serial number: 01726699 Calibration frequency: Every year Date of calibrations: Sep.14,2010 by Liaoning Provincial Institute of Measurement (valid until Sep.13, 2011) Sep.13,2011 by Liaoning Provincial Institute of Measurement (valid until Sep.12, 2012) Sep.11,2012 by Liaoning Provincial Institute of Measurement (valid until Sep.10, 2013) Sep.9,2013 by Liaoning Provincial Institute of Measurement (valid until Sep.8, 2014)
Measuring/ Reading/ Recording frequency:	<i>The data is measured and read continuously, recorded every 5 minutes, aggregated hourly, daily, monthly and yearly, and archived electronically during the crediting period and two years after.</i>
Calculation method (if applicable):	
QA/QC procedures:	<i>Data with low level of uncertainty. QA/QC procedures are planned for these data. Flow meter is subject to regular maintenance and testing regime to ensure accuracy. Once a year, the flow meter is sent to a certified institute for external calibration (certificates are available for DOE)</i>
Purpose of data:	Used for baseline emission calculation.
Additional comment:	

Data / Parameter:	LFG _{flare, y}
Unit:	Nm ³
Description:	Amount of landfill gas flared
Measured/ Calculated / Default:	Measured
Source of data:	<i>Flow meter</i>
Value(s) of monitored parameter:	21,282,634
Monitoring equipment:	Flow meter Type: Annubar 285 Accuracy class: $\pm 2\%$ Serial number: 01746509 Calibration frequency: Every year Date of calibrations: Sep.14,2010 by Liaoning Provincial Institute of Measurement (valid until Sep.13, 2011) Sep.13,2011 by Liaoning Provincial Institute of Measurement (valid until Sep.12, 2012) Sep.11,2012 by Liaoning Provincial Institute of Measurement (valid until Sep.10, 2013) Sep.9,2013 by Liaoning Provincial Institute of Measurement (valid until Sep.8, 2014)
Measuring/ Reading/ Recording frequency:	<i>The data is measured and read continuously, recorded every 5 minutes, aggregated hourly, daily, monthly and yearly, and archived electronically during the crediting period and two years after.</i>
Calculation method (if applicable):	

QA/QC procedures:	<i>Data with low level of uncertainty. QA/QC procedures are planned for these data. Flow meter is subject to regular maintenance and testing regime to ensure accuracy. Once a year, the flow meter is sent to a certified institute for external calibration (certificates are available for DOE)</i>
Purpose of data:	<i>Used for baseline emission calculation.</i>
Additional comment:	

Data / Parameter:	LFG _{electricity, y}
Unit:	Nm ³
Description:	<i>Amount of landfill gas combusted in power plant</i>
Measured/ Calculated / Default:	Measured
Source of data:	<i>Flow meter</i>
Value(s) of monitored parameter:	<i>21,281,971</i>
Monitoring equipment:	Flow meter Type: Annubar 285 Accuracy class: ±2% Serial number: 01746510 Calibration frequency: Every year Date of calibrations: Sep.14,2010 by Liaoning Provincial Institute of Measurement (valid until Sep.13, 2011) Sep.13,2011 by Liaoning Provincial Institute of Measurement (valid until Sep.12, 2012) Sep.11,2012 by Liaoning Provincial Institute of Measurement (valid until Sep.10, 2013) Sep.9,2013 by Liaoning Provincial Institute of Measurement (valid until Sep.8, 2014)
Measuring/ Reading/ Recording frequency:	<i>The data is measured and read continuously for the group of 3 engines (not for each engine), recorded every 5 minutes, aggregated hourly, daily, monthly and yearly, and archived electronically during the crediting period and two years after.</i>
Calculation method (if applicable):	
QA/QC procedures:	<i>Data with low level of uncertainty. QA/QC procedures are planned for these data. Flow meter is subject to regular maintenance and testing regime to ensure accuracy. Once a year, the flow meter is sent to a certified institute for external calibration (certificates are available for DOE)</i>
Purpose of data:	<i>Used for baseline emission calculation.</i>
Additional comment:	

Data / Parameter:	W _{CH₄,y}
Unit:	m ³ CH ₄ / m ³ LFG
Description:	<i>Methane fraction in the landfill gas</i>
Measured/ Calculated / Default:	Measured
Source of data:	<i>Gas analyzer</i>

Value(s) of monitored parameter:	<i>About 50% (variable)</i>
Monitoring equipment:	Gas Analyzer Type: XGF-4043 Accuracy class: $\leq 2\%$ Serial number: 0708404 Calibration frequency: Every year Date of calibrations: Sep.13,2010 by Liaoning Provincial Institute of Measurement (valid until Sep.12, 2011) Sep.2,2011 by Liaoning Provincial Institute of Measurement (valid until Sep.1, 2012) Sep.1,2012 by Liaoning Provincial Institute of Measurement (valid until Aug.31, 2013) Aug.31,2013 by Liaoning Provincial Institute of Measurement (valid until Aug.30, 2014)
Measuring/ Reading/ Recording frequency:	<i>The data is measured continuously, recorded every 5 minutes, and archived electronically during the crediting period and two years after.</i>
Calculation method (if applicable):	
QA/QC procedures:	<i>Data with low level of uncertainty. QA/QC procedures are planned for these data. Analyzer is subject to regular maintenance and testing regime to ensure accuracy. Once a month an internal calibration is carried out by using a certified sample gas. Once a year an external calibration is carried out by an authorized institute.</i>
Purpose of data:	<i>Used for baseline emission calculation.</i>
Additional comment:	

Data / Parameter:	EL _{LFG}
Unit:	MWh
Description:	Net amount of electricity generated using landfill gas
Measured/ Calculated / Default:	Measured
Source of data:	Electricity meter
Value(s) of monitored parameter:	11,168,400
Monitoring equipment:	Electricity meter Type: DSSD331-3 Accuracy class: 0.5s Serial number: 8007472 Calibration frequency: Every 5 years Date of last calibration: Oct.12, 2008 by Power Metrology Institute of Liaoning Electric Power Co., Ltd. Shenyang Power Supply Company (valid until Oct 11, 2013) Oct.10, 2013 by Northeast Electric Power Research Institute Co.,Ltd (valid until Oct 9, 2018)
Measuring/ Reading/ Recording frequency:	<i>The data is measured continuously, aggregated and recorded monthly and yearly, and archived electronically during the crediting period and two years after.</i>

Calculation method (if applicable):	
QA/QC procedures:	<i>According to Chinese relevant regulations, the electricity metering equipment has been properly configured by the Power Supply company. The meters are calibrated by the grid company according to relevant National electricity measurement standards. Electricity metering equipment is checked and sealed by National Authority Measurement Department.</i>
Purpose of data:	<i>Used for baseline emission calculation.</i>
Additional comment:	

Data / Parameter:	EL _{PR}
Unit:	MWh
Description:	Total amount of electricity consumed
Measured/ Calculated / Default:	Measured
Source of data:	2 Electricity meters
Value(s) of monitored parameter:	<u>Electricity meter A: 831.39</u> <u>Electricity meter B: 0.073</u>
Monitoring equipment:	<p><u>Electricity meter A</u> Type: DTSD482 Accuracy class: 1 Serial number: 0103200014423 – until Jul.18, 2013 Calibration frequency: Every 5 years Date of calibrations: Feb.19, 2009 by Su Jiatun Agro electricity Bureau Calibration and Testing Center (valid until Feb.18, 2014 as per the certificate)</p> <p>Type: DTZ188 Accuracy class: 0.5s Serial number: 010112300001515158 –Jul.18, 2013 to now Calibration frequency: Every 5 years Date of calibrations: Jul.17, 2013 by Northeast Electric Power Research Institute Co.,Ltd (valid until Jul.16, 2018 as per the certificate)</p> <p><u>Electricity meter B</u> Type: DTS51 Accuracy class: 1 Serial number: 0103200019480 Calibration frequency: Every 5 years Date of calibrations: Jan.5,2009 by Su Jiatun Agro electricity Bureau Calibration and Testing Center (valid until Jan.4, 2014 as per the certificate) Dec.26, 2013 by Northeast Electric Power Research Institute Co.,Ltd (valid until Dec.25, 2018 as per the certificate)</p>
Measuring/ Reading/ Recording frequency:	<i>The data is measured continuously, recorded every month (according to the official bills), and archived electronically during the crediting period and two years after.</i>
Calculation method (if applicable):	

QA/QC procedures:	<i>According to Chinese relevant regulations, the electricity metering equipment has been properly configured by the Power Supply company. The meters are calibrated by the grid company according to relevant National electricity measurement standards. Electricity metering equipment is checked and sealed by National Authority Measurement Department.</i>
Purpose of data:	<i>Used for Project emission calculation.</i>
Additional comment:	

Data / Parameter:	T_{flare}
Unit:	°C
Description:	<i>Temperature in Exhaust gas of enclosed flare</i>
Measured/ Calculated / Default:	Measured
Source of data:	<i>N-type Thermocouple</i>
Value(s) of monitored parameter:	<i>About 600°C (variable)</i>
Monitoring equipment:	Thermocouple Type: WRMK-331 Calibration frequency: Replaced before one year from manufacturing (therefore no calibration is needed) Dates of replacements: Apr 12, 2011(Manufacturing date April 2011) Apr 10, 2012(Manufacturing date March 2012) Mar 21, 2013(Manufacturing date February 2013) Feb 18, 2014(Manufacturing date January 2014)
Measuring/ Reading/ Recording frequency:	<i>The data is measured continuously, recorded every 5 minutes, and archived electronically during the crediting period and two years after.</i>
Calculation method (if applicable):	
QA/QC procedures:	<i>Thermocouple is replaced by a new one every year to ensure accuracy.</i>
Purpose of data:	<i>Used for baseline emission calculation.</i>
Additional comment:	

Data / Parameter:	EWH
Unit:	<i>h</i>
Description:	<i>Engine working hours of power plant</i>
Measured/ Calculated / Default:	measured
Source of data:	<i>Hour meter of the PLC (Programmable Logic Controller)</i>
Value(s) of monitored parameter:	<i>25,760</i>
Monitoring equipment:	PLC, Programmable Logic Controller Type: Siemens S7-300 Accuracy: Deviation per day: < 10 s
Measuring/ Reading/ Recording frequency:	<i>The data is measured continuously for the group of 3 engines, recorded every 5 minutes, and archived electronically during the crediting period and two years after.</i>

Calculation method (if applicable):	
QA/QC procedures:	<i>Equipment is maintained in line with manufacturer recommendations to assure high quality output.</i>
Purpose of data:	<i>Used for baseline emission calculation.</i>
Additional comment:	

Data / Parameter:	FWH
Unit:	<i>h</i>
Description:	<i>Flare working hours</i>
Measured/ Calculated / Default:	Measured
Source of data:	<i>Hour meter of the PLC (Programmable Logic Controller)</i>
Value(s) of monitored parameter:	25,869
Monitoring equipment:	PLC, Programmable Logic Controller Type: Siemens S7-300 Accuracy: Deviation per day: < 10 s
Measuring/ Reading/ Recording frequency:	<i>The data is measured continuously, recorded every 5 minutes, and archived electronically during the crediting period and two years after.</i>
Calculation method (if applicable):	
QA/QC procedures:	<i>Equipment is maintained in line with manufacturer recommendations to assure high quality output.</i>
Purpose of data:	<i>Used for baseline emission and project emission calculation.</i>
Additional comment:	

Data / Parameter:	PE _{flare}
Unit:	<i>tCO₂</i>
Description:	<i>Emission caused by methane not being destroyed in the course of flaring</i>
Measured/ Calculated / Default:	Calculated using the biogas flow to the flare FV _{RG,h} , the methane content in the biogas fv _{CH4,RG,h} and the flare efficiency. For the flare efficiency the default values for enclosed flare are used, as per the “Tool to determine project emissions from flaring gases containing methane” , and therefore the only parameter needed, besides LFG _{flare, y} and fv _{CH4,RG,h} , is T _{flare} .
Source of data:	
Value(s) of monitored parameter:	17,354.63
Monitoring equipment:	
Measuring/ Reading/ Recording frequency:	
Calculation method (if applicable):	<i>As per the methodological “Tool to determine project emission from flaring gases containing methane”</i>
QA/QC procedures:	
Purpose of data:	<i>Used for baseline emission calculation</i>
Additional comment:	

Data / Parameter:	$f_{VCH_4, RG, h}$
Unit:	m^3CH_4 / m^3LFG
Description:	<i>Methane fraction in the landfill gas</i>
Measured/ Calculated / Default:	Measured
Source of data:	<i>Gas analyzer</i>
Value(s) of monitored parameter:	<i>About 50% (variable)</i>
Monitoring equipment:	<p>Gas Analyzer Type: XGF-4043 Accuracy class: $\leq 2\%$ Serial number: 0708404 Calibration frequency: Every year</p> <p>Date of calibrations: Sep.13,2010 by Liaoning Provincial Institute of Measurement (valid until Sep.12, 2011) Sep.2,2011 by Liaoning Provincial Institute of Measurement (valid until Sep.1, 2012) Sep.1,2012 by Liaoning Provincial Institute of Measurement (valid until Aug.31, 2013) Aug.31,2013 by Liaoning Provincial Institute of Measurement (valid until Aug.30, 2014)</p>
Measuring/ Reading/ Recording frequency:	<i>The data is measured continuously, recorded every 5 minutes, and archived electronically during the crediting period and two years after.</i>
Calculation method (if applicable):	
QA/QC procedures:	<i>Data with low level of uncertainty. QA/QC procedures are planned for these data. Analyzer is subject to regular maintenance and testing regime to ensure accuracy. Once a month an internal calibration is carried out by using a certified sample gas. Once a year an external calibration is carried out by an authorized institute.</i>
Purpose of data:	<i>Used for PE_{flare} emission calculation of baseline.</i>
Additional comment:	

Data / Parameter:	$FV_{RG, h}$
Unit:	m^3/h
Description:	Volumetric flow rate of the residual gas in dry basis at normal conditions in the hour h
Measured/ Calculated / Default:	Measured
Source of data:	<i>Flow meter</i>
Value(s) of monitored parameter:	<i>Variable</i>

Monitoring equipment:	Flow meter Type: Annubar 285 Accuracy class: $\pm 2\%$ Serial number: 01746509 calibration frequency: Every year Date of calibrations: Sep.14,2010 by Liaoning Provincial Institute of Measurement (valid until Sep.13, 2011) Sep.13,2011 by Liaoning Provincial Institute of Measurement (valid until Sep.12, 2012) Sep.11,2012 by Liaoning Provincial Institute of Measurement (valid until Sep.10, 2013) Sep.9,2013 by Liaoning Provincial Institute of Measurement (valid until Sep.8, 2014)
Measuring/ Reading/ Recording frequency:	<i>The data is measured and read continuously, recorded every 5 minutes, and archived electronically during the crediting period and two years after.</i>
Calculation method (if applicable):	
QA/QC procedures:	<i>Data with low level of uncertainty. QA/QC procedures are planned for these data. Flow meter is subject to regular maintenance and testing regime to ensure accuracy. Once a year, the flow meter is sent to a certified institute for external calibration (certificates are available)</i>
Purpose of data:	<i>Used for PE_{flare} emission calculation of baseline.</i>
Additional comment:	

D.3. Implementation of sampling plan

>>

N/A

SECTION E. Calculation of emission reductions or GHG removals by sinks

E.1. Calculation of baseline emissions or baseline net GHG removals by sinks

>>

According to the applicable methodologies, the baseline emission (BE_y), achieved by the project activity for this monitoring period are calculated as follows:

$$BE_y = (MD_{project,y} - MD_{reg,y}) * GWP_{CH_4} + EL_{LFG,y} * CEF_{elec,BL,y} + ET_{LFG,y} * CEF_{ther,BL,y}$$

Where:

- ER_y = Emissions reduction, in tons of tCO_2 equivalent (tCO_{2eq})
- $MD_{project,y}$ = Amount of methane that would have been destroyed/combusted during the year, in tons of methane (tCH_4)
- $MD_{reg,y}$ = Amount of methane that would have been destroyed/combusted during the year in the absence of the project, in tons of methane (tCH_4)
- GWP_{CH_4} = Global Warming Potential of methane (tCO_{2eq}/tCH_4)
- $EL_{LFG,y}$ = Net quantity of electricity produced using LFG exported which in the absence of the project activity would have been produced by power plants connected to the grid or by an on-site/off-site fossil fuel based captive power generation, during year y, in megawatt hours (MWh)
- $CEF_{elec,BL,y}$ = CO_2 emissions intensity of the baseline source of electricity displaced (tCO_{2eq}/MWh)

- EL_{PR} = Amount of electricity generated in an on-site fossil fuel fired power plant or imported from the grid as a result of the project activity, measured using an electricity meter (MWh)
- $ET_{LFG,y}$ = Quantity of thermal energy produced utilizing the landfill gas, which in the absence of the project activity would have been produced from onsite/offsite fossil fuel fired boiler, during the year y (TJ/y)
- $CEF_{ther,BL,y}$ = CO_2 emissions intensity of the fuel used by boiler to generate thermal energy which is displaced by LFG based thermal energy generation (tCO_2e/TJ)
- $ET_{PR,y}$ = fossil fuel consumption on site during project activity in year y (ton)
- $CEF_{ther,PR,y}$ = CO_2 emissions factor of the fossil fuel used by boiler to generate thermal energy in the project activity during year y .

The project does not consume or produce thermal energy, therefore:

$$ET_{LFG,y} = 0$$

Section 1.01 Calculation of $MD_{project,y}$

For the ER calculation, two are the main tools used:

- I. The so called “master”, the spreadsheet used in FDS for the $MD_{project}$ calculation (CO_2 avoided by destruction of methane by flaring or combustion in the engines).
- II. The ER calculation spreadsheet (in Annex), where the results of the master (i.e. the reports from FDS) are put together with the calculations of the CO_2 avoided by energy production ($EL_{LFG,y} * CEF_{elec,BL,y}$) and CO_2 produced by energy consumption ($EL_{PR} * CEF_{elec,PR,y}$) to get the final result of ER.

Methane destroyed by the project activity ($MD_{project,y}$) during each monitoring period is determined as follows:

- the sum of the quantities fed into the flare ($LFG_{flare,y}$), to the power plant ($LFG_{electricity,y}$) is compared with the total LFG captured ($LFG_{total,y}$);
- the lower value of the two is then adopted as $MD_{project,y}$ for a conservative approach.

This conservative approach of the lower value is applied in the column “J” of the sheets “OpDdatasheet” of the *master* (MD calculation spreadsheet) on a 5 minutes basis (the most conservative).

Calculations are then made according to the following formula:

$$MD_{project,y} = MD_{flare,y} + MD_{electricity,y}$$

$$MD_{flare,y} = (LFG_{flare,y} * w_{CH4,y} * D_{CH4,y}) - (PE_{flare,y} / GWP_{CH4})$$

$$MD_{electricity,y} = LFG_{electricity,y} * w_{CH4,y} * D_{CH4,y}$$

The methane fraction of the LFG during this monitoring period is measured continuously, and recorded every 5 minutes like all the other monitored parameters.

$PE_{flare,y}$ is the project emission from flaring of the residual gas stream determined following the procedure described in the “Tool to determine project emissions from flaring gases containing Methane”.

In this project, the flare is enclosed and default value for the flare efficiency is adopted. The temperature of the exhaust gas of the flare is measured continuously. Therefore flare efficiency in the hour h is then (column “H” of the “OpDdatasheet” of the master):

- 90%, if the temperature of the flare’s (T_{flare}) exhaust is above 500 °C for more than 40 minutes during the hour h , and the manufacturer’s specifications on proper operation of the flare are met continuously during the hour h .

- 50%, if the temperature of the flare's (T_{flare}) exhaust is above 500 °C for more than 40 minutes during the hour h , but the manufacturer's specifications on proper operation of the flare are not met at any point in time during the hour h .
- 0%, if the temperature of the flare's (T_{flare}) exhaust is below 500 °C more than 20 minutes during the hour h .

Flare efficiency calculated as above is then assigned to each hour of the monitoring period and used to calculate the Project Emissions. During the monitoring period the flare has been operated in compliance with manufacturer's specifications.

Monitoring Period Aug. 01, 2011 –July.31, 2014	[tCO ₂]
PE_{flare,y}	17,354.63

Therefore, according to the above quoted formulae and to the spreadsheet, the result of MD_{project,y} is the following:

Monitoring Period <u>Aug. 01, 2011 –July.31, 2014</u>	<u>[tCO₂]</u>
<u>MD_{project,y}*GWP_{CH4}</u>	<u>321,331</u>

Section 1.02 Calculation of MD_{reg,y}

$$MD_{\text{reg},y} = MD_{\text{project},y} * AF$$

As per the registered PDD, there are no regulatory or contractual requirements that obligate to install a specific system for collection and destruction of LFG or to collect and destroy a specific percentage of the “generated” amount of biogas, the adjustment factor (AF) is then assumed to be “0” for this project.

Hence,

Monitoring Period Aug. 01, 2011 –July.31, 2014	[tCH ₄]
MD_{reg,y}	0

Calculation of MD_{electricity,y}

Since the plant is connected to the North East Electric Power Grid, its carbon emissions factor has been chosen for exported electricity:

$$CEF_{\text{elec,BL},y} = 1.05176 \text{ tCO}_{2\text{eq}}/\text{MWh}$$

The net amount of electricity exported to China Northeast Electric Power Grid during this monitoring period is shown as follows:

Monitoring Period	EL _{LFG,y} [MWh]	CEF _{elec,BL,y} [tCO _{2eq} /MWh]	EL _{LFG,y} *CEF _{elec,BL,y} [tCO ₂]
Aug. 01, 2011 –July.31, 2014	31,528.60	1.05176	33,161

Evidences for EL_{LFG,y} values are the available official invoices.

E.2. Calculation of project emissions or actual net GHG removals by sinks

>>

According to the applicable methodologies, the project emissions (PE_y), achieved by the project activity for this monitoring period are calculated as follows:

$$PE_y = EL_{PR} * CEF_{elec,PR,y} + ET_{PR,y} * CEF_{ther,PR,y}$$

Where:

- PE_y = Project emissions reduction, in tons of tCO_2 equivalent (tCO_{2eq})
- $CEF_{elec,PR,y}$ = CO_2 emissions intensity of the baseline source of electricity displaced (tCO_{2eq}/MWh)
- EL_{PR} = Amount of electricity generated in an on-site fossil fuel fired power plant or imported from the grid as a result of the project activity, measured using an electricity meter (MWh)
- $ET_{PR,y}$ = fossil fuel consumption on site during project activity in year y (ton)
- $CEF_{ther,PR,y}$ = CO_2 emissions factor of the fossil fuel used by boiler to generate thermal energy in the project activity during year y.

The project does not consume or produce thermal energy, therefore:

$$ET_{PR,y} = 0$$

The net amount of electricity imported from Northeast China Grid during this monitoring period is shown as follows, evidences for $EL_{PR,y}$ values are the available official bills and invoices.

Monitoring Period	$EL_{PR,y}$ [MWh]	$CEF_{elec,PR,y}$ [tCO_{2eq}/MWh]	$EL_{LFG,y} * CEF_{elec,PR,y}$ [tCO_2]
Aug. 01, 2011 – July.31, 2014	831.39	1.05176	875

E.3. Calculation of leakage

>>

According to the applicable methodologies and registered PDD, there is no leakage in this project.

E.4. Summary of calculation of emission reductions or net anthropogenic GHG removals by sinks

Item	Baseline emissions or baseline net GHG removals by sinks ($t CO_2e$)	Project emissions or actual net GHG removals by sinks ($t CO_2e$)	Leakage ($t CO_2e$)	Emission reductions or net anthropogenic GHG removals by sinks ($t CO_2e$)
Total	354,492	875	0	353,617

E.5. Comparison of actual emission reductions or net anthropogenic GHG removals by sinks with estimates in registered PDD

Item	Values estimated in ex-ante calculation of registered PDD	Actual values achieved during this monitoring period
Emission reductions or GHG removals by sinks ($t CO_2e$)	391,189	353,617

E.6. Remarks on difference from estimated value in registered PDD

>>

The actual emission reductions claimed in this period are lower than PDD estimate.

E.7. Actual emission reductions or net anthropogenic GHG removals by sinks during the first commitment period and the period from 1 January 2013 onwards

Item	Actual values achieved up to 31 December 2012	Actual values achieved from 1 January 2013 onwards
Emission reductions or GHG removals by sinks (t CO ₂ e)	166,140	187,477

- - - - -

Appendix 1. Contact information of project participants and responsible persons/ entities

Project participant and/or responsible person/ entity	<input type="checkbox"/> Project participant <input checked="" type="checkbox"/> Responsible person/ entity for completing the CDM-MR-FORM
Organization name	Asja Renewables (shenyang) Co., Ltd
Street/P.O. Box	Wenyi Road 21-1#
Building	Diwang Mansion
City	Shenyang
State/Region	Liaoning Province
Postcode	110016
Country	P.R. China
Telephone	+86 24.23 987210
Fax	+86 24.23 987133
E-mail	xl.diao@asja.cn
Website	
Contact person	Diao
Title	Project Manger
Salutation	
Last name	Diao
Middle name	
First name	Xianlan
Department	
Mobile	
Direct fax	
Direct tel.	
Personal e-mail	xl.diao@asja.cn