



**UNFCCC  
Clean Development Mechanism  
Monitoring Report**

*Methane capture and combustion from Animal Waste Management System (AWMS) of the 3S Program farms of the Instituto Sadia de Sustentabilidade.*

**Monitoring Period:**  
**CDM Registration number: PoA 2767**  
**Document ID: 01**  
**Date: 01/03/2011**

<p><b>CLEAN DEVELOPMENT MECHANISM</b> <b>SMALL-SCALE PROGRAMME OF ACTIVITIES MONITORING REPORT</b></p>
--

**CONTENTS**

- A. General description of small-scale programme of activities (SSC-PoA)
- B. Monitoring the PoA Project Activity
- C. Equations and calculations method.
- D. Emission reduction

**SECTION A. General programme of activities (PoA) description****A.1 Title of the small-scale programme of activities (PoA):**

>> Methane capture and combustion from Animal Waste Management System (AWMS) of the 3S Program farms of the Instituto Sadia de Sustentabilidade.

**Version 01**

**Date: 25 March 2011**

**A.2. Coordinating/managing entity and participants of SSC-PoA:**

Information relating to the parties involved in the project activity is described in Annex 1. The parties involved are:

**Table 1 – Table of the parties involved in the PoA for the Instituto Sadia de Sustentabilidade.**

Party involved	Private or public entity	Does the party involved want to be considered as a project participant (Yes/No)
Brazil	<ul style="list-style-type: none"> <li>Instituto Sadia de Sustentabilidade (ISS)</li> </ul>	No
United Kingdom	<ul style="list-style-type: none"> <li>European Carbon Fund (ECF)</li> </ul>	No

**A.3. Crediting period****A.3.1. Crediting period**

>> The starting date of the first crediting period is the registration date of the related CPAs that is from 20 August 2010 to 29 October 2016.

**A.3.2. Total estimated emission reductions over the crediting period**

>>The total estimated emissions reduction over the year project period as documented in the related PoA is 591.418/year Tonnes of CO<sub>2</sub> equivalent.

**A.3.3. Project Activity Description and Background**

>>The geographical boundary for the project five states of Brazil which are: Rio Grande do Sul (RS), Santa Catarina (SC), Paraná (PR), Minas Gerais (MG) and Mato Grosso (MT).

The project activity uses the AMS III.D-Version 13 methodology, “Methane recovery in agricultural and agro industrial activities”. A tool to determine emissions for the project activity is also used and the methodology is “Tool to determine project emissions from flaring gases containing methane”.

The proposed project activity for all CPAs in this PoA on AWMS in swine production has the same initial concept. The process is to capture and combust biogas produced by fermentation of organic material in the biodigesters. The project activity consists of substituting the business as usual of open-air lagoons for the installed biodigester system and enclosed flare system.

Detailed information about the Project is provided in the PoA reference number 2767 and other documents, which are available and can be downloaded from the UNFCCC website at ([http://cdm.unfccc.int/ProgrammeOfActivities/poa\\_db/L8VJWHUO4F6CRPTN12BAZ13QD95YGE/vie\\_w](http://cdm.unfccc.int/ProgrammeOfActivities/poa_db/L8VJWHUO4F6CRPTN12BAZ13QD95YGE/vie_w)).

## **SECTION B. Monitoring a PoA project activity**

### **B.1. Monitoring Report**

#### **B.1.1. Monitoring reports associated with this project activity:**

>> This is the first monitoring report associated with this project activity of the PoA 2767.

#### **B.1.2. Monitoring report period:**

>> The period covered in this monitoring report is from 21 August 2010 to 31 January 2011. The monitoring report period is within the limits of the crediting period noted in Section A.3.1.

#### **B.1.3. Emission reduction achieved over the monitoring period:**

>> The emission reductions achieved over the designated monitoring period are 54.275,90 tonnes of CO<sub>2</sub>e. This amount is around 81% lower than the 295,708.99 tonnes of CO<sub>2</sub>e which were estimated to be reduced according to the PoA in the same period. This difference is basically due to a lower performance factor during this period.

### **B.2. Methodology applied:**

#### **B.2.1. Baseline methodology applied during monitoring period:**

>> The baseline methodology AMS III.D – Version 13 used in this project activity is applicable because without this technology the methane gas produced by the AWMS would go 100% into the atmosphere.

The proposed project activity is to capture the methane gas with the biodigester equipment and combust the methane gas formed by the enclosed flare system. This activity changes the actual AWMS that is the business as usual for the farmers. The technology generates better conditions for all farmers of the Instituto Sadia de Sustentabilidade 3S Program. Based on tentative calculations, the emission reduction does not exceed 60 kt CO<sub>2</sub>eq. /year as the methodology requires for each CPA.

#### **B.2.2. Monitoring methodology applied during monitoring period:**

>> The project activity of the PoA uses the approved small scale AMS III.D. – Version 13 methodology and sectoral scope number 15. The III.D methodology is for methane recovery in agricultural and agro industrial activities. A methodological tool to determine project emission from flaring gases containing methane was used.

**B.3. Monitoring plan****B.3.1. Development and appropriateness of monitoring plan:**

>> The “Methane capture and combustion from Animal Waste Management System (AWMS) of the 3S Program farms of the Instituto Sadia de Sustentabilidade Project Monitoring Plan ” from October 2009 was developed based on the approved monitoring methodology identified in the Section B.2.2.

**B.3.2. Implementation of monitoring plan:**

>> During the monitoring period identified in the Section B.1.2, the Project Entity implemented the validated Monitoring Plan that was part of the project documents evaluated by the Designed Operational Entity (DOE) during the validation process.

**B.3.3. Revision of monitoring plan:**

>> The monitoring plan has no revision and was validated along with the entire project activity registered on 29 October 2009 and has not been altered since that date.

For more information UNFCCC project website:

[http://cdm.unfccc.int/ProgrammeOfActivities/poa\\_db/L8VJWHUO4F6CRPTNI2BAZ13QD95YGE/view](http://cdm.unfccc.int/ProgrammeOfActivities/poa_db/L8VJWHUO4F6CRPTNI2BAZ13QD95YGE/view)

**B.3.4. Monitored data:**

>> The key data monitored of the project activity are listed in the Section D.3 of this Monitoring Report PoA and in the Monitoring Plan. The project activity data were collected in accordance with the registered PoA and are shown in the following items. All necessary evidences to verify these data have been presented to the DOE for verification.

**SECTION C. Equations and calculation methods****C.1. Baseline equation and calculation method:**

>>

The emissions from the open-air lagoon in swine production are calculated by:

$$BE = VS_{site} * N_m * B_o * D_{CH4} * MCF * GWP_{CH4} * Dy / 1000$$

Where:

*BE*: Baseline emission of CH<sub>4</sub> emissions in manure management system, in tons of CO<sub>2</sub> equivalents.

*VS<sub>site</sub>*: Adjusted volatile solid excretion per day on dry-matter basis for defined livestock population at project site, in kg-dm/animal.

*N<sub>m</sub>*: Livestock of defined population.

*B<sub>0</sub>*: Maximum CH<sub>4</sub> production capacity from manure per animal for defined livestock population (m<sup>3</sup> CH<sub>4</sub>/kg-d).

*DCH<sub>4ex ante</sub>*: CH<sub>4</sub> density (0,67kg/m<sup>3</sup> at room temperature, 20o C and 1 atm pressure).

*MCF*: Methane conversion factor (MCF). The Brazil's National Meteorological Institute (INMET) considers as an annual average temperature for the follow:

18° SC-State (MCF 77% )  
 19° PR-State (MCF 77%)  
 20° SP-State (MCF 78%)  
 21 ° MG-State (MCF 78%)  
 22° Go-State (MCF 78%)  
 26° MT-State (MCF 79%)

*GWP CH<sub>4</sub>*: Approved Global Warming Potential (GWP) of CH<sub>4</sub>.

*Dy*: Number of days in the year.

IPCC default values are based on an average weight of 82 kg of the market swine and 198Kg of the breeding swine. In order to obtain a representative figure, the IPCC default value for Volatile Solids is corrected as follows:

$$VS_{site} = (W_{site} / W_{default}) \times VS_{default}$$

Where:

*VS<sub>site</sub>*: Adjusted volatile solid excretion per day on dry-matter basis for defined livestock population at project site, in kg-dm/animal.

*W<sub>site</sub>*: Average site animal weight for defined population, in kg.

*W<sub>default</sub>*: Default average animal weight for defined population, in kg.

*VS<sub>default</sub>*: Default value (IPCC) for the volatile solid excretion per day on a dry-matter basis for defined livestock population, in kg-dm/animal.

## C.2. Project activity equation and calculation method:

>> Total calculated project emissions are determined by the project's emissions in a year y. The project's emissions related to the PoA is the electricity for the operation of the facility. The consumption of the electricity will be analysed in all equipments installed in the CPA to determine the total consumption of the system.

The factor used to calculate the parameter is the ef-grid that is based in the generation of national electricity calculated by the Brazilian DNA.

$$El = \sum electricity * ef-grid$$

Where:

*El*: Total energy consumption of the project activity in tCO<sub>2</sub>e./year

*∑ electricity*: sum of the voltage of the operating equipments in MWh.

*Ef-grid*: energy grid factor from Brazil's DNA 2007 calculation determined in tCO<sub>2</sub>e./MWh.

### C.3. Emission reduction equation and calculation method:

>> The emission reduction considered in this project activity uses the following equations:

$$ER_{Estimated} = BE - PE_{El}$$

$$ER_{Calculated} = MD_{total} - PE_y$$

$$MD_{total} = MD_{flare} + MD_{fuel}$$

$$MD_{flare} = BG * w_{CH4} * D_{CH4} * FE * GWP_{CH4}$$

$$MD_{fuel} = BG * w_{CH4} * D_{CH4} * FE * GWP_{CH4}$$

$$PE_y = PE_{flare} + PE_{fuel} + PE_{El}$$

$$PE_{flare} = \sum_{h=1}^{8760} TM_{RG,h} * (1 - \eta_{flare,h}) * \frac{GWP_{CH4}}{1000}$$

$$PE_{fuel} = \sum_{h=1}^{8760} TM_{RG,h} * (1 - \eta_{fuel,h}) * \frac{GWP_{CH4}}{1000}$$

$$TM_{RG} = FV_{RG} * fv_{CH4, RG} * D_{CH4}$$

$$P_{EI} = \sum electricity * ef-grid$$

Where:

$ER_{Estimated}$  : Estimated project emission reduction in year y, in tons of CO<sub>2</sub> equivalent.

$BE$ : Baseline emissions in year y, in tons of CO<sub>2</sub> equivalent.

$PE_{EI}$ : Emission of CO<sub>2</sub> related by the consumption of electricity in the facility, in tons CO<sub>2</sub>e./year

$ER_{Calculated}$  : Calculated project emission reduction, in tons of CO<sub>2</sub> equivalent.

$MD_{total}$  : methane captured and destroyed by project activity, in tons of CO<sub>2</sub> equivalent, which will be measured using the conditions of the flaring process.

$MD_{flare}$  : methane captured and destroyed by enclosed flare, in tons of CO<sub>2</sub> equivalent

$MD_{fuel}$  : methane captured and destroyed by fuel system, in tons of CO<sub>2</sub> equivalent

$BG$  : biogas flared (m<sup>3</sup>) that is equivalent to  $FV_{RG}$  (m<sup>3</sup>).

$w_{CH_4}$  : methane content in biogas (mass fraction).

$D_{CH_4}$  : density of methane at the temperature and pressure of the biogas at (Kg/m<sup>3</sup>).

$FE$  : flare efficiency (fraction)

$GWP_{CH_4}$  : Methane global warming potential (21)

$PE_y$  : Total project emissions, in tons of CO<sub>2</sub> equivalent.

$PE_{flare}$  : CH<sub>4</sub> emissions related to enclosed flare system, in tons of CO<sub>2</sub> equivalent.

$PE_{fuel}$  : CH<sub>4</sub> emissions related to fuel system, in tons of CO<sub>2</sub> equivalent.

$PE_{EI}$ : Emission of CO<sub>2</sub> related by the consumption of electricity in the facility, in tons CO<sub>2</sub>e./year

$\eta_{fuel, h}$  : Flare efficiency in hour h.

$\eta_{flare, h}$  : Flare efficiency in hour h.

$TM_{RG, h}$  : Mass flow rate of methane in residual gas in hour h, in Kg/h.

$FV_{RG}$  : Volumetric flow rate (m<sup>3</sup>), that is equivalent to the variable of BG (m<sup>3</sup>).

$f_v_{CH_4}$ : Volumetric fraction of methane.

$D_{CH_4}$ : CH<sub>4</sub> density at normal conditions temperature, 20o C and 1 atm pressure (Kg/m<sup>3</sup>).

$P_{EI}$ : Total emission of the energy consumption of the project activity in tCO<sub>2</sub>e./year

$\Sigma electricity$ : sum of the voltage of the operating equipments in MWh.

$Ef_{grid}$ : energy grid factor from Brazil's DNA 2007 calculation determined in tCO<sub>2</sub>e./MWh.

## SECTION D. Emission Reduction

### D.1. Baseline emission of the monitoring report:

>> See Annex I.

### D.2. Project activity emission of the monitoring report:

>> See Annex II.

### D.3. Emission reduction of the monitoring report:

>> See Annex II.

# SMALL-SCALE CDM PROGRAMME OF ACTIVITIES MONITORING REPORT

CDM – Executive Board

page 10

## Annex I

Default Values				
Parameters	Value	Unit	Data Source	Comment
<b>Bo</b>	0.45	m <sup>3</sup> CH <sub>4</sub> /kg VS	IPCC 2006 Guidelines	The IPCC value used is for Western Europe.
<b>D CH<sub>4</sub></b>	0.67 at 20°C and 1 atm pressure	Kg/m <sup>3</sup>	IPCC 2006 Guidelines	-
<b>GWP CH<sub>4</sub></b>	21	-	IPCC 2006 Guidelines	-
<b>VS site</b>	0.49 for market swine and 0.46 for breed swine	Kg/animal/day	Sadia estimation based on the IPCC 2006 Guidelines.	VS site is determined by an equation that uses VS default values of the IPCC Guidelines. In the equations there is a VSsite value for breeding swine and a VSsite value for market swine.
<b>W methane</b>	0.55	%	Sadia estimation for estimated emission based on the IPCC 2006 Guidelines.	The real value for the calculated emission is analyzed by the Sadia team with a methane analyzer.
<b>MCF</b>	18° SC-State MCF 77% / 19° PR-State MCF 77%/ 20° SP-State MCF 78%/ 21 ° MG-State MCF 78%/ 22° Go-State MCF 78%/ 26° MT-State MCF 79%.	Fraction	IPCC 2006 Guidelines.	The factor MCF is taken from IPCC 2006 Guidelines according to the annual average temperature in Brazil's National Meteorological Institute (INMET) for the manure management system considered in this PoA. (Volume 4, chapter 10, table 10.17)
<b>Wdefault</b>	198 for breeding suine and 92 for market suine	kg	Sadia estimation for estimated emission based on the IPCC 2006 Guidelines.	
<b>Vs Default</b>	0.46 for breeding suine and 0.30 for market suine	kg-dm/animal	IPCC 2006 Guidelines.	
<b>nFlare</b>	90	%	Manufacture specifications.	During monitoring period if the temperature was inferior to 500°C the system will admit a zero value and will not start measuring the parameters. If temperature is superior to 500°C the system will admit a flare efficiency of 90%. According to manufacture specification.

# SMALL-SCALE CDM PROGRAMME OF ACTIVITIES MONITORING REPORT

CDM – Executive Board

page 11

## BASELINE EMISSIONS

Title of CPA	Nm	Vs site	W site	Dy	MCF	W default	Vs default	Nm	BE BE= VSsite*Nm*Bo(0.45)* DCH4(0.67)*MCF*GWP CH4(21)*Dy/1000	State
SC - (ADELINO LAZZARIN - 8468532S01)	1,100	0.492	82	350	0.77	50	0.30	1100	923,47	SC
SC - (ADIR ANTONIO E IRACILDA BOSIO - 8005877S01)	794	0.492	82	350	0.77	50	0.30	794	666,58	SC
SC - (ALBERTO E OU NADIR MAGRO - 696455S02)	1,200	0.492	82	350	0.77	50	0.30	1200	1.007,42	SC
SC - (ALDERICO PEDERSETTI E ALTEMIR - 8002240S01)	260	0.460	198	365	0.77	198	0.46	260	212,82	SC
SC - (ALECIO E OU SALETE ANTONIOLLI - 8005010S01)	800	0.492	82	350	0.77	50	0.30	800	671,62	SC
SC - (AMARILDO BERTA E OU MARISTELA - 8344949S01)	1,420	0.492	82	350	0.77	50	0.30	1420	1.192,12	SC
SC - (RITA MAGALHÃES MACIEL - 8555338S01)	1,008	0.492	82	350	0.77	50	0.30	1008	846,24	SC
SC - (AMILTON CESAR FONTANA E OU ELE - 8233004S01)	366	0.460	198	365	0.77	198	0.46	366	299,59	SC
SC - (ANDERSON LUIZ PINTRO E ANESIO - 8394326S01)	1,210	0.492	82	350	0.77	50	0.30	1210	1.015,82	SC
SC - (ANESTOR E OU LEVINA BUSANELLO - 574856S02)	990	0.492	82	350	0.77	50	0.30	990	831,12	SC
SC - (ANGELO E ZULMIRA RIZZI - 612588S02)	1,260	0.492	82	350	0.77	50	0.30	1260	1.057,79	SC
SC - (ANTENOR ZANETTI E OU LEONIDA Z - 607380S02)	1,200	0.492	82	350	0.77	50	0.30	1200	1.007,42	SC
SC - (ANTONIO E JUSTINA NONDILLO - 8210837S01)	1,500	0.492	82	350	0.77	50	0.30	1500	1.259,28	SC
SC - (ANTONIO LUCIO E OU ZELIR VALANDRO - 8429456S01)	1,050	0.492	82	350	0.77	50	0.30	1050	881,49	SC
SC - (ARI DOMINGOS E IVETE PERONDI - 615544S02)	830	0.492	82	350	0.77	50	0.30	830	696,8	SC
SC - (CARLOS FRARE - 684910S02)	1,000	0.492	82	350	0.77	50	0.30	1000	839,52	SC
SC - (CLAUDINO E OU ADILIS M. FRIGO - 618080S02)	1,000	0.492	82	350	0.77	50	0.30	1000	839,52	SC
SC - (DALVINO DE TOFENO - 8005168S01)	1,060	0.492	82	350	0.77	50	0.30	1060	889,89	SC
SC - (DARCI BRUSTOLIN - 8001138S01)	850	0.492	82	350	0.77	50	0.30	850	713,59	SC
SC - (DELCEI E OU ZULMIRA L. MENEGAT - 562955S02)	530	0.460	198	365	0.77	198	0.46	530	433,83	SC
SC - (DILCEU RADIN,MARIA E OU DILMAR - 589101S02)	250	0.460	198	365	0.77	198	0.46	250	204,64	SC
SC - (DILMAR ADYR APPEL E OU MARLI - 8002789S01)	1,200	0.492	82	350	0.77	50	0.30	1200	1007,42	SC
SC - (DIRCEU AGOSTINI E OU CARME - 8005397S01)	1,020	0.492	82	350	0.77	50	0.30	1020	856,31	SC
SC - (DIVANIR COSER E OU GREICE COSER - 2326507S01)	320	0.460	198	365	0.77	198	0.46	320	261,94	SC

# SMALL-SCALE CDM PROGRAMME OF ACTIVITIES MONITORING REPORT

## CDM – Executive Board

page 12

SC - (DODOVINO PAGNUSSATT - 8432520S01)	1,400	0.492	82	350	0.77	50	0.30	1400	1.175,33	SC
SC - (EDGAR,NEIVA E GREGORIO PEGORARO - 684660S02)	980	0.492	82	350	0.77	50	0.30	980	822,73	SC
SC - (EDILSON ALBA - 8358940S01)	850	0.492	82	350	0.77	50	0.30	850	713,59	SC
SC - (FERNANDO VOLPINI - 3089312S02)	1,200	0.492	82	350	0.77	50	0.30	1200	1.007,42	SC
SC - (GILBERTO,DIRLEI E OU B.ZANATTA - 687073S02)	800	0.492	82	350	0.77	50	0.30	800	671,62	SC
SC - (HUGO,IVANETE E DIOMAR DAMIN - 573892S02)	750	0.492	82	350	0.77	50	0.30	750	629,64	SC
SC - (INÊS ZELINDA PRIOR - 8418250S01)	3,300	0.492	82	350	0.77	50	0.30	3300	2.770,41	SC
SC - (IVO LORENSETTI E OU CLEIDE - 631906S01)	990	0.492	82	350	0.77	50	0.30	990	831,12	SC
SC - (JOSE ANTONIO BONAN E OU SERGIO - 8464456S01)	1,000	0.492	82	350	0.77	50	0.30	1000	839,52	SC
SC - (PAULO C.E JOSE ANTONIO PUNTEL - 8507295S01)	1,400	0.492	82	350	0.77	50	0.30	1400	1.175,33	SC
SC - (JOSE ROBERTO GOMES E FIORELO CECON - 8240485S01)	840	0.460	198	365	0.77	198	0.46	840	687,59	SC
SC - (JOSEMAR ZUCCHI, DOILIO ZUCCHI - 685160S02)	1,200	0.492	82	350	0.77	50	0.30	1200	1.007,42	SC
SC - (LAURI ANTONIO CERVELIN - 668290S02)	300	0.460	198	365	0.77	198	0.46	300	245,57	SC
SC - (LEANE ELIZABETH HERRMANN - 8420084S01)	1,200	0.492	82	350	0.77	50	0.30	1200	1.007,42	SC
SC - (LENOIR VISSOTTO - 8261970S01)	850	0.492	82	350	0.77	50	0.30	850	713,59	SC
SC - (LEONEL E BERNARDETE DE MARCO - 8006059S01)	1,100	0.492	82	350	0.77	50	0.30	1100	923,47	SC
SC - (LEUDIR JOSÉ MARSCH - 8006130S01)	710	0.492	82	350	0.77	50	0.30	710	596,06	SC
SC - (LIBORIO ERVINO SCHNEIDER - 539430S02)	676	0.460	198	365	0.77	198	0.46	676	553,34	SC
SC - (LIDIO BAZEI E OU OSMILDA BAZEI - 8272727S01)	900	0.492	82	350	0.77	50	0.30	900	755,57	SC
SC - (MARCOS ANTONIO LORENSETTI - 8004609S01)	1,100	0.492	82	350	0.77	50	0.30	1100	923,47	SC
SC - (MARCOS LUIZ E ANTONIO ROSSATTO - 120995S02)	850	0.492	82	350	0.77	50	0.30	850	713,59	SC
SC - (MARIA INES GARCIA FERRES DE SERRA - 8473811S01)	1,200	0.492	82	350	0.77	50	0.30	1200	1.007,42	SC
SC - (MARIO E OU NELSI BERTUOL - 8002665S01)	1,350	0.492	82	350	0.77	50	0.30	1350	1.133,35	SC
SC - (NELSON SGARBI - 542440S02)	550	0.460	198	365	0.77	198	0.46	550	450,21	SC
SC - (OCLAIR JOSE DALLA COSTA - 8005028S01)	580	0.460	198	365	0.77	198	0.46	580	474,76	SC
SC - (OLIR SIGNOR E OU VALTER SIGNOR - 8473722S01)	1,000	0.492	82	350	0.77	50	0.30	1000	839,52	SC
SC - (ONIVALDO E OU ZITA DALCORTIVO - 660787S02)	940	0.492	82	350	0.77	50	0.30	940	789,15	SC
SC - (ORNELIO WEBER - 654426S02)	1,170	0.460	198	365	0.77	198	0.46	1170	957,71	SC
SC - (OSVALDO BONA - 8470316S01)	300	0.460	198	365	0.77	198	0.46	300	245,57	SC
SC - (PAULO JOSE DEITOS - 8261261S01)	1,000	0.492	82	350	0.77	50	0.30	1000	839,52	SC
SC - (RENI LUIZ ZULIAN - 544418S02)	450	0.460	198	365	0.77	198	0.46	450	368,35	SC
SC - (RICIERI BOSCATO - 607878S02)	1,010	0.492	82	350	0.77	50	0.30	1010	847,91	SC
SC - (SERGIO A. E OU IVONETE ABATTI - 686530S02)	920	0.492	82	350	0.77	50	0.30	920	772,36	SC

# SMALL-SCALE CDM PROGRAMME OF ACTIVITIES MONITORING REPORT

CDM – Executive Board

page 13

SC - (SERGIO PEDRO E OU INES Z.TASSI - 678228S02)	1,500	0.492	82	350	0.77	50	0.30	1500	1.259,28	SC
SC - (VALDEMAR FUNEZ E OU LORENA M.FUNEZ - 609161S02)	800	0.492	82	350	0.77	50	0.30	800	671,62	SC
SC - (VALDIR ANDOIGNINI - 544736S02)	800	0.460	198	365	0.77	198	0.46	800	654,84	SC
SC - (ADIR TOMBINI - 8491844S01)	1,200	0.460	198	365	0.77	198	0.46	1200	982,27	SC
SC - (VICTOR E MOACIR SOPELSA - 8451877S01)	4,024	0.492	82	350	0.77	50	0.30	4024	3.378,22	SC
SC - (VITOR ANTONIO SANTIN - 8218269S01)	1,000	0.492	82	350	0.77	50	0.30	1000	839,52	SC
SC - (ACYLINO, HERTA E ADILSON PASQU - 8002541S01)	520	0.492	82	350	0.77	50	0.30	520	436,55	SC
SC - (ABEL FROZZA E OU MOACIR FROZZA - 8503664S01)	470	0.492	82	350	0.77	50	0.30	470	394,57	SC
SC - (ADAO GONCALVES E OU SILESIA N. - 8369860S01)	640	0.492	82	350	0.77	50	0.30	640	537,29	SC
SC - (ADELAR GRIGOLO E OU CLARICE L. - 670251S02)	1,600	0.492	82	350	0.77	50	0.30	1600	1.343,23	SC
SC - (ADELAR PEGORARO - 565059S02)	120	0.460	198	365	0.77	198	0.46	120	98,23	SC
SC - (ADELIR ANTONIO PICK - 698601S02)	750	0.492	82	350	0.77	50	0.30	750	629,64	SC
SC - (ADEMIR KOCHENBORGER E OU LEONI - 8004820S01)	1,400	0.492	82	350	0.77	50	0.30	1400	1.175,33	SC
SC - (ADEMIR VISSOTTO E OU IVETE C.V - 8261989S01)	450	0.492	82	350	0.77	50	0.30	450	377,78	SC
SC - (AGENOR E CLAUDETE COLDEBELLA - 682179S02)	492	0.492	82	350	0.77	50	0.30	492	413,04	SC
SC - (AIRTON ATUATTI E OU LUCIVANIA, - 3115399S02)	320	0.460	198	365	0.77	198	0.46	320	261,94	SC
SC - (AIRTON MENEGATT - 482153S02)	1,623	0.492	82	350	0.77	50	0.30	1623	1.362,54	SC
SC - (AIRTON MICHAELSEN E OU MARLA M - 687391S02)	310	0.460	198	365	0.77	198	0.46	310	253,75	SC
SC - (ALBINO COLDEBELLA - 590886S02)	600	0.492	82	350	0.77	50	0.30	600	503,71	SC
SC - (ALCEDIR E OU INES MUNARETTO - 559334S02)	610	0.492	82	350	0.77	50	0.30	610	512,11	SC
SC - (ALECIO E OU SUELI SGANZERLA - 613738S02)	130	0.460	198	365	0.77	198	0.46	130	106,41	SC
SC - (ALEXANDRE BOMM E CLAIR BOMM - 8003122S01)	510	0.492	82	350	0.77	50	0.30	510	428,15	SC
SC - (ALMIR DOMINGOS DE FILTRO E OU - 8434450S01)	900	0.492	82	350	0.77	50	0.30	900	755,57	SC
SC - (ALMITO E OU DELVINA GAVAZZONI - 603503S02)	500	0.492	82	350	0.77	50	0.30	500	419,76	SC
SC - (ALSIR PASSINI E OU MICHELLI PASSINI - 8333912S01)	950	0.492	82	350	0.77	50	0.30	950	797,54	SC
SC - (ALTAIR TITAO E OU LOURDES TITA - 8461945S01)	660	0.492	82	350	0.77	50	0.30	660	554,08	SC
SC - (ALVO LENIR SARTURI - 668729S02)	550	0.492	82	350	0.77	50	0.30	550	461,74	SC
SC - (AMARILDO J. DAMO E ANDRÉ DAMO - 8155941S01)	2,000	0.460	198	365	0.77	198	0.46	2000	1.637,11	SC
SC - (ANDRE NERLING - 8447918S01)	1,200	0.492	82	350	0.77	50	0.30	1200	1.007,42	SC
SC - (ANGELO A. BORILLE - 559270S02)	110	0.460	198	365	0.77	198	0.46	110	90,04	SC
SC - (ANILDO WESP E OU ERTA WESP - 8248974S01)	650	0.492	82	350	0.77	50	0.30	650	545,69	SC
SC - (ANTONIO F. E ELI ELVIRA ZAMARC - 8236500S01)	800	0.492	82	350	0.77	50	0.30	800	671,62	SC
SC - (ANTONIO TURCATTO E OU ONORI TU - 8006016S01)	490	0.492	82	350	0.77	50	0.30	490	411,36	SC

# SMALL-SCALE CDM PROGRAMME OF ACTIVITIES MONITORING REPORT

CDM – Executive Board

page 14

SC - (ANTONIO ZANELLA E OU IVONE ZAN - 542989S02)	140	0.460	198	365	0.77	198	0.46	140	114,6	SC
SC - (ARI ATILIO AUGSTEM E OU NELCI - 609951S02)	500	0.492	82	350	0.77	50	0.30	500	419,76	SC
SC - (ARMANDO LOPES DO AMARAL - 545767S02)	180	0.460	198	365	0.77	198	0.46	180	147,34	SC
SC - (ARMINDO,NUELMA E ROBERTO VOLPI - 543535S02)	200	0.460	198	365	0.77	198	0.46	200	163,71	SC
SC - (ARTANIR E OU SUELI VARGAS - 333204S02)	650	0.492	82	350	0.77	50	0.30	650	545,69	SC
SC - (AUGUSTINHO BIELUCZYK E OU PAUL - 678821S02)	340	0.460	198	365	0.77	198	0.46	340	278,31	SC
SC - (AUGUSTINHO BOZ E OU NELCI BOZ - 8416605S01)	300	0.492	82	350	0.77	50	0.30	300	251,86	SC
SC - (AUGUSTO E OU VANDIONOR SARTURI - 583448S01)	460	0.492	82	350	0.77	50	0.30	460	386,18	SC
SC - (AVELINO CUMERLATTO - 8106738S01)	470	0.492	82	350	0.77	50	0.30	470	394,57	SC
SC - (AVELINO MALTAURO, ERSI, HANELI - 8252122S01)	450	0.492	82	350	0.77	50	0.30	450	377,78	SC
SC - (BELARMINO ROMANI E OU INES - 545252S02)	450	0.492	82	350	0.77	50	0.30	450	377,78	SC
SC - (FLAVIO KIELING - 610526S02)	250	0.460	198	365	0.77	198	0.46	250	204,64	SC
SC - (CARLOS CAGOL - 8216070S01)	1,100	0.492	82	350	0.77	50	0.30	1100	923,47	SC
SC - (CELITO PECCINI E OU GERCI - 8359075S01)	540	0.492	82	350	0.77	50	0.30	540	453,34	SC
SC - (CELSO BELLAVER - 8001944S01)	310	0.460	198	365	0.77	198	0.46	310	253,75	SC
SC - (CLAIR ANTONIO MENTA E OU ELIS - 8461090S01)	500	0.492	82	350	0.77	50	0.30	500	419,76	SC
SC - (CLAUDECIR PAGNUSSATTO - 8460280S01)	500	0.492	82	350	0.77	50	0.30	500	419,76	SC
SC - (CLAUDIO NAOR LUDKE E NELSON - 8447900S01)	600	0.492	82	350	0.77	50	0.30	600	503,71	SC
SC - (CLÁUDIO ROVANI - 699454S02)	140	0.460	198	365	0.77	198	0.46	140	114,6	SC
SC - (CLAUDIOMIR E ALEXSANDRA CROZET - 8106223S01)	480	0.492	82	350	0.77	50	0.30	480	402,97	SC
SC - (CLOVIS A. SAVOLDI - 8201455S01)	140	0.460	198	365	0.77	198	0.46	140	114,6	SC
SC - (DALIRIO MANTHEI E MARCIO MANTHEI - 8458804S01)	450	0.492	82	350	0.77	50	0.30	450	377,78	SC
SC - (DANILO LORENSETTI - 581119S02)	640	0.492	82	350	0.77	50	0.30	640	537,29	SC
SC - (DARCI BAZEI E OU IRACEMA SALET - 8367159S01)	450	0.492	82	350	0.77	50	0.30	450	377,78	SC
SC - (DARCI GUERRA E OU IDILES GUERR - 8379467S01)	440	0.492	82	350	0.77	50	0.30	440	369,39	SC
SC - (DEOCLECIO GERMANO SARTORI E OU - 8261296S01)	490	0.492	82	350	0.77	50	0.30	490	411,36	SC
SC - (DEOLINDO E OU ANARI FONTANA - 685623S02)	366	0.492	82	350	0.77	50	0.30	366	307,26	SC
SC - (DEOMAR E OU ZELINDA SOLDI - 583383S02)	600	0.492	82	350	0.77	50	0.30	600	503,71	SC
SC - (DILCO E OU ARLETE ANA CORSO - 8005761S01)	630	0.492	82	350	0.77	50	0.30	630	528,9	SC
SC - (DILMAR JOAO E OU ALAIR PIFFER - 619116S02)	495	0.492	82	350	0.77	50	0.30	495	415,56	SC
SC - (DILMAR LUIZ MAZIERO - 8287910S01)	440	0.492	82	350	0.77	50	0.30	440	369,39	SC
SC - (DILTO E OU ROSEMERI T.B.FERRARI - 678864S02)	650	0.492	82	350	0.77	50	0.30	650	545,69	SC
SC - (DIRCEU JOSE CONTI E OU ROSANE - 8347441S01)	450	0.492	82	350	0.77	50	0.30	450	377,78	SC

# SMALL-SCALE CDM PROGRAMME OF ACTIVITIES MONITORING REPORT

## CDM – Executive Board

page 15

SC - (DOVILIO ANTONIO E OU LEONI GOM - 623610S02)	300	0.460	198	365	0.77	198	0.46	300	245,57	SC
SC - (EDIO LUIS NESPOLO E OU IVANIR - 840305S01)	600	0.492	82	350	0.77	50	0.30	600	503,71	SC
SC - (EDIO PAULO SIGNOR E OU ROBERTO - 8265674S01)	800	0.492	82	350	0.77	50	0.30	800	671,62	SC
SC - (EDIVAN ZULIAN E OU EVANDRO - 8468389S01)	250	0.460	198	365	0.77	198	0.46	250	204,64	SC
SC - (EDO LAURO KOPPE E OU NELSI - 565970S02)	580	0.492	82	350	0.77	50	0.30	580	486,92	SC
SC - (ELDER LEITE - 8272980S01)	750	0.492	82	350	0.77	50	0.30	750	629,64	SC
SC - (ELEANDRO CALIARI E OU MARCIANA - 8433720S01)	550	0.492	82	350	0.77	50	0.30	550	461,74	SC
SC - (ELOAR E OU IVETE FIORENTIN - 544779S02)	490	0.492	82	350	0.77	50	0.30	490	411,36	SC
SC - (ELOI EINSFELD E OU MARCIA D.EI - 8260486S01)	450	0.492	82	350	0.77	50	0.30	450	377,78	SC
SC - (ELPIDIO NEREU VON FRUHAUF - 702064S02)	450	0.492	82	350	0.77	50	0.30	450	377,78	SC
SC - (ELVADIR MISKI, CLACIR MISKI - 8001901S01)	300	0.460	198	365	0.77	198	0.46	300	245,57	SC
SC - (ELVIS J. E OU NEIVA P.FARDIN - 566195S02)	300	0.460	198	365	0.77	198	0.46	300	245,57	SC
SC - (EMIDIO AREND - 642940S02)	435	0.460	198	365	0.77	198	0.46	435	356,07	SC
SC - (ERLON MENELAU BORTOLI - 8002274S01)	570	0.492	82	350	0.77	50	0.30	570	478,53	SC
SC - (ESPAZIANO SAVOLDI - 542130S02)	770	0.492	82	350	0.77	50	0.30	770	646,43	SC
SC - (EUCLIDES E OU RENADI ROSA DA SILVA - 610623S02)	490	0.492	82	350	0.77	50	0.30	490	411,36	SC
SC - (EVARISTO PEGORARO E SIRLEI - 669660S01)	450	0.492	82	350	0.77	50	0.30	450	377,78	SC
SC - (GELSON SOLONYNSKA E OU MARLEI - 8458782S01)	150	0.460	198	365	0.77	198	0.46	150	122,78	SC
SC - (GENESIO VICENSI - 542261S02)	600	0.492	82	350	0.77	50	0.30	600	503,71	SC
SC - (GERALDO E OU CARLINHO PIGOSSO - 571792S02)	490	0.460	198	365	0.77	198	0.46	490	401,09	SC
SC - (GERALDO SILVESTRE E OU ANA - 8434638S01)	490	0.492	82	350	0.77	50	0.30	490	411,36	SC
SC - (GILBERTO ANTONIO ACCADROLLI - 8275700S01)	670	0.492	82	350	0.77	50	0.30	670	562,48	SC
SC - (GILBERTO E OU BENO R.NEIS - 665681S02)	470	0.492	82	350	0.77	50	0.30	470	394,57	SC
SC - (GILBERTO, ANA E OU SELIO DA CAMPO - 2962608S02)	660	0.492	82	350	0.77	50	0.30	660	554,08	SC
SC - (GILMAR TAFFAREL E OU HILARIO - 683981S02)	450	0.492	82	350	0.77	50	0.30	450	377,78	SC
SC - (HELMUTH E LEONIR MEYER - 572365S02)	140	0.460	198	365	0.77	198	0.46	140	114,6	SC
SC - (HENRIQUE FIORESE, VANIR FIORES - 576700S02)	125	0.460	198	365	0.77	198	0.46	125	102,32	SC
SC - (HILARIO E OU NELSIRA L.RAUSCHKOLB - 3119173S02)	550	0.492	82	350	0.77	50	0.30	550	461,74	SC
SC - (IEDO ANTONIO TREMARIN, ILOI - 8313571S01)	600	0.460	198	365	0.77	198	0.46	600	491,13	SC
SC - (IRINEU SCHWINGEL - 586463S02)	600	0.492	82	350	0.77	50	0.30	600	503,71	SC
SC - (IRIO ANTONIO ENGEL E OU WALMI - 8460086S01)	560	0.492	82	350	0.77	50	0.30	560	470,13	SC
SC - (ISAURO LUIZ E OU MARIA I.M.LONGO - 562912S02)	120	0.460	198	365	0.77	198	0.46	120	98,23	SC
SC - (ISOLDA P.E OU GILMAR SPESSATTO - 652741S02)	700	0.492	82	350	0.77	50	0.30	700	587,66	SC

# SMALL-SCALE CDM PROGRAMME OF ACTIVITIES MONITORING REPORT

## CDM – Executive Board

page 16

SC - (ITAMAR COLLA - 3016005S02)	730	0.492	82	350	0.77	50	0.30	730	612,85	SC
SC - (IVAIR CANTON E OU ELIZETE - 8006288S01)	660	0.492	82	350	0.77	50	0.30	660	554,08	SC
SC - (IVAIR WEBER E OU NUBIA WEBER - 8137625S01)	620	0.492	82	350	0.77	50	0.30	620	520,5	SC
SC - (IVO E OU DORNI WERMEIER - 647101S02)	200	0.460	198	365	0.77	198	0.46	200	163,71	SC
SC - (IVO E OU TEREZINHA SALVINSKI - 8192782S01)	450	0.492	82	350	0.77	50	0.30	450	377,78	SC
SC - (IVO MONARETTO E OU LUCILA MONA - 601241S02)	610	0.492	82	350	0.77	50	0.30	610	512,11	SC
SC - (IVONEI FUCHS E OU DIRCE FUCHS - 654957S02)	1,600	0.492	82	350	0.77	50	0.30	1600	1.343,23	SC
SC - (IVONIR ADELIA PILGER E VERNON - 8150893S01)	270	0.460	198	365	0.77	198	0.46	270	221,01	SC
SC - (JACIR BERNO E OU FLAVIA BERNO - 697133S02)	330	0.460	198	365	0.77	198	0.46	330	270,12	SC
SC - (JACIR RESTELATTO E OU NELIS - 655554S02)	500	0.492	82	350	0.77	50	0.30	500	419,76	SC
SC - (JAIME E OU GENI ZANELLA - 543071S02)	130	0.460	198	365	0.77	198	0.46	130	106,41	SC
SC - (JALMIR ANTONIO VILANI E OU IRA - 2883880S02)	140	0.460	198	365	0.77	198	0.46	140	114,6	SC
SC - (JANDIR ANTONIO FRACASSO - 558761S02)	110	0.460	198	365	0.77	198	0.46	110	90,04	SC
SC - (JANDIR E IVONE FORNARI - 563781S02)	330	0.460	198	365	0.77	198	0.46	330	270,12	SC
SC - (JANDIR E OU GENIRA CERUTTI - 659428S02)	1,000	0.492	82	350	0.77	50	0.30	1000	839,52	SC
SC - (JOAO BATISTA SMANIOTTO MARIA - 652091S02)	110	0.460	198	365	0.77	198	0.46	110	90,04	SC
SC - (JOAO CARLOS E IRACEMA GAIO - 642304S02)	630	0.492	82	350	0.77	50	0.30	630	528,9	SC
SC - (JOAO CARLOS E VALTEMIR LOCATEL - 8192022S01)	510	0.492	82	350	0.77	50	0.30	510	428,15	SC
SC - (JONES E OU ERCI GASTMANN - 8001014S01)	450	0.492	82	350	0.77	50	0.30	450	377,78	SC
SC - (JOSE ARI GOLLO E OU MARLI - 686212S02)	900	0.492	82	350	0.77	50	0.30	900	755,57	SC
SC - (JOSE GAGNOLO E OU CELESTINO - 8257728S01)	470	0.492	82	350	0.77	50	0.30	470	394,57	SC
SC - (JOSE GUAREZI E OU ISAURA GUAREZI - 571881S02)	450	0.492	82	350	0.77	50	0.30	450	377,78	SC
SC - (JOSÉ GUBERT - 8231729S01)	610	0.492	82	350	0.77	50	0.30	610	512,11	SC
SC - (JOSENEI E CLAUDETE G. MASQUIO - 8245193S01)	600	0.492	82	350	0.77	50	0.30	600	503,71	SC
SC - (JOVINO ANDREA MARCHEZAN - 8005826S01)	580	0.492	82	350	0.77	50	0.30	580	486,92	SC
SC - (JOVINO LUIZ VICARI E OU MARIA - 8423903S01)	640	0.492	82	350	0.77	50	0.30	640	537,29	SC
SC - (JUAREZ PEDRO E OU DIRLEI A. - 658421S02)	180	0.460	198	365	0.77	198	0.46	180	147,34	SC
SC - (LADI LUIS E OU VANDA CERVELIN - 686379S02)	270	0.460	198	365	0.77	198	0.46	270	221,01	SC
SC - (LAURI E OU IZAURA FOCESATTO - 2856514S02)	420	0.492	82	350	0.77	50	0.30	420	352,6	SC
SC - (LAURI, LISELDA E ARGENTINO TONELO - 8187860S01)	120	0.460	198	365	0.77	198	0.46	120	98,23	SC
SC - (LAURINDO CADORIN E OU CLECI - 609234S02)	80	0.460	198	365	0.77	198	0.46	80	65,48	SC
SC - (LAUVIR REBELATTO E OU VERONICA - 8454264S01)	650	0.492	82	350	0.77	50	0.30	650	545,69	SC
SC - (LEDA E OU IVANILDO FRIGO - 8001596S01)	600	0.492	82	350	0.77	50	0.30	600	503,71	SC

# SMALL-SCALE CDM PROGRAMME OF ACTIVITIES MONITORING REPORT

## CDM – Executive Board

page 17

SC - (LEOCIR DOMINGOS ZANELLA - 633810S02)	470	0.492	82	350	0.77	50	0.30	470	394,57	SC
SC - (LEODIR A. E OU NADIR V. BASSANE - 643785S02)	770	0.492	82	350	0.77	50	0.30	770	646,43	SC
SC - (LEONILDO E OU SALETE PRETTO - 640280S02)	270	0.460	198	365	0.77	198	0.46	270	221,01	SC
SC - (LEONIR JOSE SCHUMACHER - 8460094S01)	620	0.492	82	350	0.77	50	0.30	620	520,5	SC
SC - (LEONIR MIGLIORETTO - 633410S02)	130	0.492	82	350	0.77	50	0.30	130	109,14	SC
SC - (LEONOR E OU ILIZETE VARGAS - 3072320S02)	150	0.460	198	365	0.77	198	0.46	150	122,78	SC
SC - (LEUCLIDES SANDRIN E OU LEDA - 583154S02)	200	0.460	198	365	0.77	198	0.46	200	163,71	SC
SC - (LIBERA E ALTAIR SGANZERLA - 8438048S01)	460	0.460	198	365	0.77	198	0.46	460	376,54	SC
SC - (LIBERINO E OU IRACI CADORIN - 637580S02)	960	0.492	82	350	0.77	50	0.30	960	805,94	SC
SC - (LINDO E OU DELIO RUKS - 620360S02)	750	0.492	82	350	0.77	50	0.30	750	629,64	SC
SC - (LUIS CARLOS ZWIRTES - 8002959S01)	460	0.492	82	350	0.77	50	0.30	460	386,18	SC
SC - (LUIZ BALBINOT NETO E IVETE - 200689S02)	110	0.460	198	365	0.77	198	0.46	110	90,04	SC
SC - (LUIZINHO BOZ E OU LEONILDA BOZ - 8461961S01)	500	0.492	82	350	0.77	50	0.30	500	419,76	SC
SC - (MAJURI E VALDIR SGARBOSSA I E II - 686107S02)	595	0.492	82	350	0.77	50	0.30	595	574,08	SC
SC - (MARCELO PEGORARO E OU CARLOS - 8438293S01)	1,400	0.492	82	350	0.77	50	0.30	1400	1.175,33	SC
SC - (MARIO DASUK E OU FATIMA DASUK - 8450099S01)	500	0.492	82	350	0.77	50	0.30	500	419,76	SC
SC - (MARIO E OU ENI ROSSATTO - 647586S02)	600	0.492	82	350	0.77	50	0.30	600	503,71	SC
SC - (MARIO GABIATTI E OU CLEUSA - 8466017S01)	510	0.492	82	350	0.77	50	0.30	510	428,15	SC
SC - (MARIO ZAMPIERON, CLAUDINA - 603244S02)	600	0.492	82	350	0.77	50	0.30	600	503,71	SC
SC - (MAURI E OU MARISTELA MAIER - 8207879S01)	640	0.492	82	350	0.77	50	0.30	640	537,29	SC
SC - (MAURO MENEGATT - 8196311S01)	600	0.492	82	350	0.77	50	0.30	600	503,71	SC
SC - (MAXIMINO ZANELLA E OU MARISETE - 8418551S01)	450	0.492	82	350	0.77	50	0.30	450	377,78	SC
SC - (MOACIR SARTORI E OU NEUSA - 543250S02)	160	0.460	198	365	0.77	198	0.46	160	130,97	SC
SC - (NADIR ALLENDT E OU NILCI I. - 8259267S01)	450	0.492	82	350	0.77	50	0.30	450	377,78	SC
SC - (NADIR SCHEIFLER E OU ANITA LER - 8465967S01)	610	0.492	82	350	0.77	50	0.30	610	512,11	SC
SC - (NARCISO E OU ILAIDI GROSSER - 687111S02)	620	0.492	82	350	0.77	50	0.30	620	520,5	SC
SC - (NATALINO P.DE SOUZA EOU LAURO - 675180S02)	145	0.460	198	365	0.77	198	0.46	145	118,69	SC
SC - (NEDIO E OU MARINES G.CONTINI - 8001537S01)	530	0.492	82	350	0.77	50	0.30	530	444,95	SC
SC - (NEIVO E IVONE AMADEI - 8251347S01)	550	0.492	82	350	0.77	50	0.30	550	461,74	SC
SC - (NEIVO MAGRO E OU REGIANE SECCO - 8400067S01)	253	0.460	198	365	0.77	198	0.46	253	207,09	SC
SC - (NEIVO P.E OU LORENA PERONDI - 8004480S01)	600	0.492	82	350	0.77	50	0.30	600	503,71	SC
SC - (NELCINDO BOMM E OU VALI BOMM - 8155895S01)	500	0.492	82	350	0.77	50	0.30	500	419,76	SC
SC - (NELSON CERVELIN - 8194998S01)	150	0.460	198	365	0.77	198	0.46	150	122,78	SC

# SMALL-SCALE CDM PROGRAMME OF ACTIVITIES MONITORING REPORT

## CDM – Executive Board

page 18

SC - (NELSON DALLAGNOL - 652261S02)	710	0.492	82	350	0.77	50	0.30	710	596,06	SC
SC - (NELSON E SALETE NONDILO - 8433232S01)	1,000	0.492	82	350	0.77	50	0.30	1000	839,52	SC
SC - (NELSON,CLOTILDE E EUGENIO PICHLER - 8126151S01)	710	0.492	82	350	0.77	50	0.30	710	596,06	SC
SC - (NEODIR SGANZERLA - 543179S02)	165	0.460	198	365	0.77	198	0.46	165	135,06	SC
SC - (NESTOR E OU SUZETE RUVIARO - 121150S02)	450	0.492	82	350	0.77	50	0.30	450	377,78	SC
SC - (NEUDI CERVELIN - 677205S02)	400	0.460	198	365	0.77	198	0.46	400	327,42	SC
SC - (NEUDIR CAGLIARI E OU LARIDANI - 8466440S01)	580	0.492	82	350	0.77	50	0.30	580	486,92	SC
SC - (NEUDIR E OU CATARINA IGNACIO - 2771993S02)	800	0.492	82	350	0.77	50	0.30	800	671,62	SC
SC - (NEURI PEDROTTI - 8456356S01)	450	0.492	82	350	0.77	50	0.30	450	377,78	SC
SC - (NORMELIO PAULO E OU JANETE - 3059944S01)	450	0.492	82	350	0.77	50	0.30	450	377,78	SC
SC - (OLIR DALLAGNOL E OU IRACEMA - 8104174S01)	250	0.460	198	365	0.77	198	0.46	250	204,64	SC
SC - (ORILDE CAMPAGNOLO - 8004188S01)	1,000	0.492	82	350	0.77	50	0.30	1000	839,52	SC
SC - (OSMAR DE BONA E CLAUDETE - 8251770S01)	630	0.492	82	350	0.77	50	0.30	630	528,9	SC
SC - (PALMIRO BERNART - 8262187S01)	600	0.492	82	350	0.77	50	0.30	600	503,71	SC
SC - (PAULINO TIZATTO E OU NEIMAR - 8434000S01)	1,050	0.492	82	350	0.77	50	0.30	1050	881,49	SC
SC - (PAULO ALOISIO RAMBO E OU ALICE - 683051S02)	160	0.460	198	365	0.77	198	0.46	160	130,97	SC
SC - (PEDRO CODORE - 542113S02)	150	0.460	198	365	0.77	198	0.46	150	122,78	SC
SC - (PRIMO E OU INELVA PERUZZO - 634735S02)	540	0.492	82	350	0.77	50	0.30	540	453,34	SC
SC - (RAIMUNDO E MARLI CARPEGGIANI - 8248990S01)	530	0.492	82	350	0.77	50	0.30	530	444,95	SC
SC - (REINALDO GAIO - 570834S02)	100	0.460	198	365	0.77	198	0.46	100	81,86	SC
SC - (REMI E IVO MATTES - 8005060S02)	500	0.492	82	350	0.77	50	0.30	500	419,76	SC
SC - (RICARDO JOSE SAVOLDI - 8354782S01)	560	0.492	82	350	0.77	50	0.30	560	470,13	SC
SC - (ROBERTO LUIZ DALLA ROSA - 8472971S01)	710	0.492	82	350	0.77	50	0.30	710	596,06	SC
SC - (ROBERTO NEIS E OU OSVALDO NEIS - 8399085S01)	750	0.492	82	350	0.77	50	0.30	750	629,64	SC
SC - (RONALDO ERICH SCHULZE - 8262071S01)	450	0.492	82	350	0.77	50	0.30	450	377,78	SC
SC - (ROQUE E OU DIOMAR BASSO - 670235S02)	590	0.492	82	350	0.77	50	0.30	590	495,32	SC
SC - (ROSE FRANCESCHINA RENOSTO - 685496S02)	620	0.492	82	350	0.77	50	0.30	620	520,5	SC
SC - (SALEZIO E OU NEIVA ANTONIOLLI - 679690S02)	530	0.492	82	350	0.77	50	0.30	530	444,95	SC
SC - (SANDRO PISSATTO E OU EDINARA - 8396060S01)	210	0.460	198	365	0.77	198	0.46	210	171,9	SC
SC - (SELIRIA E OU BRUNO GOSENHEIME - 8004830S01)	670	0.492	82	350	0.77	50	0.30	670	562,48	SC
SC - (SELVINO E RITA BARBIERI - 567710S02)	150	0.460	198	365	0.77	198	0.46	150	122,78	SC
SC - (SERGIO ANGELO E OU INES GIOMBE - 558559S02)	1,200	0.492	82	350	0.77	50	0.30	1200	1.007,42	SC
SC - (SILVERIO PETER E OU AZULEIDE - 2765837S02)	520	0.492	82	350	0.77	50	0.30	520	436,55	SC

# SMALL-SCALE CDM PROGRAMME OF ACTIVITIES MONITORING REPORT

## CDM – Executive Board

page 19

SC - (SILVERNO RUCKS E OU ELMA RUCKS - 8004102S01)	620	0.492	82	350	0.77	50	0.30	620	520,5	SC
SC - (SILVINO A.E OU IDETE E.F.ZANCH - 562874S02)	140	0.460	198	365	0.77	198	0.46	140	114,6	SC
SC - (TELMO LUIS FERRARI E OU ANGELO - 8211426S01)	440	0.492	82	350	0.77	50	0.30	440	369,39	SC
SC - (VALCIR E MARINI PREZOTTO - 567795S01)	660	0.492	82	350	0.77	50	0.30	660	554,08	SC
SC - (VALDECIR E OU ANGELINA CANTON - 8159726S01)	450	0.492	82	350	0.77	50	0.30	450	377,78	SC
SC - (VALDECIR E OU IDELE MARIA COLLA - 690112S02)	320	0.460	198	365	0.77	198	0.46	320	261,94	SC
SC - (VALDECIR E OU LIANE S.MANOROV - 8004790S01)	630	0.492	82	350	0.77	50	0.30	630	528,9	SC
SC - (VALDEMAR KUCZKOSKI E OU LEVINA - 675202S02)	730	0.492	82	350	0.77	50	0.30	730	612,85	SC
SC - (VALDEMIR SERGIO MENEGOTO - 653179S02)	600	0.492	82	350	0.77	50	0.30	600	503,71	SC
SC - (VALDIR E OU INES ZANCHETT - 653306S02)	470	0.492	82	350	0.77	50	0.30	470	394,57	SC
SC - (VALDIR E OU NAIR SGARBOSSA - 686107S02)	171	0.460	198	365	0.77	198	0.46	171	139,97	SC
SC - (VALDIR E OU NEIVA RAFAELLI - 8242313S01)	490	0.492	82	350	0.77	50	0.30	490	411,36	SC
SC - (VALDIR JOÃO DE COL - 8004897S01)	500	0.492	82	350	0.77	50	0.30	500	419,76	SC
SC - (VALDIR L.BONISSONI E ELIAS - 584681S01)	300	0.460	198	365	0.77	198	0.46	300	245,57	SC
SC - (VALDIRIO BUTH - 8468133S01)	470	0.492	82	350	0.77	50	0.30	470	394,57	SC
SC - (VALMIR CERUTTI E STEFANIA CERUTTI - 8465991S01)	3,000	0.492	82	350	0.77	50	0.30	3000	2.518,56	SC
SC - (VALMOR ANTONIO HORN E OU MARIN - 686158S02)	270	0.460	198	365	0.77	198	0.46	270	221,01	SC
SC - (VANDERLEI DE CARLI - 8425370S01)	550	0.492	82	350	0.77	50	0.30	550	461,74	SC
SC - (VANDERLEI DE OLIVEIRA E OU ELI - 8379904S01)	486	0.492	82	350	0.77	50	0.30	486	408,01	SC
SC - (VICTORIO RADIN - 567809S02)	360	0.492	82	350	0.77	50	0.30	360	302,23	SC
SC - (VILMAR E OU NOELI CECHIN - 587508S02)	400	0.492	82	350	0.77	50	0.30	400	335,81	SC
SC - (VILSON MINOSO E OU JURACI - 8182930S01)	600	0.492	82	350	0.77	50	0.30	600	503,71	SC
SC - (VITOR PEREIRA DA SILVA - 8316406S01)	470	0.492	82	350	0.77	50	0.30	470	394,57	SC
SC - (VITORIO E NEUSA SALETE RIBEIRO - 542920S02)	200	0.460	198	365	0.77	198	0.46	200	163,71	SC
SC - (VOLMIR PIZZATTO - 698644S02)	900	0.492	82	350	0.77	50	0.30	900	755,57	SC
SC - (WANDERLEI SEGANFREDO - 1098012S02)	120	0.460	198	365	0.77	198	0.46	120	98,23	SC
SC - (WILSON RUY TRENTINI E OU LEOCA - 568686S02)	645	0.492	82	350	0.77	50	0.30	645	541,49	SC
SC - (WILSON WALTER E OU HEIDI HOFFMAN - 685194S02)	270	0.460	198	365	0.77	198	0.46	270	221,01	SC
SC - (ZANDIR NICOLAO E OU JANMAR - 575011S02)	735	0.492	82	350	0.77	50	0.30	735	617,05	SC
SC - (ZEFERINO E OU ADELINA S.Z. CADORE - 646970S02)	300	0.460	198	365	0.77	198	0.46	300	245,57	SC
SC - (ZENO E OU SUELI ROSSI - 686727S02)	115	0.460	198	365	0.77	198	0.46	115	94,13	SC
SC - (FAZ SERTÃOZINHO (BISAVÓ 04) - Sadia ST4)	4,594	0.492	82	350	0.77	50	0.30	4594	4.402,44	SC
SC - (FAZCRICIUMA (BISAVÓ 13 E AVÓ 24) - Sadia Cr 13&24)	3,988	0.492	82	350	0.77	50	0.30	3988	4.283,61	SC

# SMALL-SCALE CDM PROGRAMME OF ACTIVITIES MONITORING REPORT

## CDM – Executive Board

page 20

SC - (FAZ STA TEREZINHA (BISAVÓ01 BISAVÓ02) - Sadia ST1)	4,150	0.492	82	350	0.77	50	0.30	4150	4.219,06	SC
SC - (FAZ NOVA SARANDI (AVÓ 05 E AVÓ 06) - Sadia NS05-06)	4,303	0.492	82	350	0.77	50	0.30	4303	4.541,51	SC
SC - (CLAUDIO BENDER - 8006180S01)	1,230	0.492	82	350	0.77	50	0.30	1230	1.032,61	SC
SC - (REDELVINO GOLFE, GERSON E CLAU - 8217416S01)	1,185	0.492	82	350	0.77	50	0.30	1185	994,83	SC

Title of CPA	Nm	Vs site	W site	Dy	MCF	W default	Vs default	Nm	BE BE= $Vs_{site} * Nm * Bo(0.45) * DCH4(0.67) * MCF * GWP$ $CH4(21) * Dy / 1000$	State
PR - (RENATO JOÃO FRIGO - 2086310S02)	500	0.460	198	365	0.77	198	0.46	500	409,28	PR
PR - (ANTONIO JACKOSKI - 2116197S01)	250	0.460	198	365	0.77	198	0.46	250	204,64	PR
PR - (ALVANIR KERBER - 2437996S02)	1,400	0.492	82	350	0.77	50	0.30	1400	1.175,33	PR
PR - (DARCI LEO GIBBERT - 2438348S03)	1,100	0.492	82	350	0.77	50	0.30	1100	923,47	PR
PR - (NILTON JANKE - 2438909S02)	1,000	0.492	82	350	0.77	50	0.30	1000	839,52	PR
PR - (VILSON LAUERSDORF - 2439085S02)	1,300	0.492	82	350	0.77	50	0.30	1300	1.091,37	PR
PR - (EDVINO ALOISIO BLATT - 2439972S02)	600	0.492	82	350	0.77	50	0.30	600	503,71	PR
PR - (VALDIR BORTOLI - 2448777S02)	1,000	0.492	82	350	0.77	50	0.30	1000	839,52	PR
PR - (TELMO BALDOINO ZIMMERMANN - 2448912S02)	1,500	0.492	82	350	0.77	50	0.30	1500	1.259,28	PR
PR - (AGOSTINHO MAZZAROLLO - 2449153S02)	1,500	0.492	82	350	0.77	50	0.30	1500	1.259,28	PR
PR - (CANISIO BERGMAN - 2449510S02)	1,000	0.492	82	350	0.77	50	0.30	1000	839,52	PR
PR - (ADEMAR ERENO WULF - 2449552S02)	700	0.492	82	350	0.77	50	0.30	700	587,66	PR
PR - (MARIA SOELI SCHMIDT - 2450259S02)	500	0.492	82	350	0.77	50	0.30	500	419,76	PR
PR - (ARTELINO JOSÉ MOMBACH - 2452154S02)	500	0.492	82	350	0.77	50	0.30	500	419,76	PR
PR - (CLAUDEMIR BOSING - 2453630S02)	1,000	0.492	82	350	0.77	50	0.30	1000	839,52	PR
PR - (PAULO LUIZ RAUBER - 2456303S02)	1,100	0.492	82	350	0.77	50	0.30	1100	923,47	PR
PR - (LUIZ GIBERT - 2456990S02)	1,000	0.492	82	350	0.77	50	0.30	1000	839,52	PR
PR - (SILVIO FRANCISCO POLETTO - 2457580S02)	1,000	0.492	82	350	0.77	50	0.30	1000	839,52	PR
PR - (MARCOS MANFRID KIRSCH - 8521700S01)	1,500	0.492	82	350	0.77	50	0.30	1500	1.259,28	PR
PR - (ISALDA SPAGNOL - 2458390S02)	1,000	0.492	82	350	0.77	50	0.30	1000	839,52	PR

# SMALL-SCALE CDM PROGRAMME OF ACTIVITIES MONITORING REPORT

## CDM – Executive Board

page 21

PR - (ALOISIO BENO STEFFENS - 2458730S02)	600	0.492	82	350	0.77	50	0.30	600	503,71	PR
PR - (CARLOS SPIES - 2459507S02)	1,600	0.492	82	350	0.77	50	0.30	1600	1.343,23	PR
PR - (VILMAR GERALDO E MARGARET LOVATO - 2460076S02)	150	0.460	198	365	0.77	198	0.46	150	122,78	PR
PR - (FLADEMIR LORENZONI - 2462842S03)	1,300	0.492	82	350	0.77	50	0.30	1300	1.091,37	PR
PR - (VALDIR KERBER - 2463431S02)	1,000	0.492	82	350	0.77	50	0.30	1000	839,52	PR
PR - (DARCI PERNONCINI DA SILVA - 2463911S02)	500	0.492	82	350	0.77	50	0.30	500	419,76	PR
PR - (JOÃO VALDIR GREGÓRIO - 2463989S02)	1,000	0.492	82	350	0.77	50	0.30	1000	839,52	PR
PR - (CLEIDSOM A PILATTI - 8458928S01)	1,100	0.492	82	350	0.77	50	0.30	1100	923,47	PR
PR - (SETEMBRINO MAZUCO - 2464543S02)	1,000	0.492	82	350	0.77	50	0.30	1000	839,52	PR
PR - (ELOI REUTER - 2465353S02)	2,300	0.492	82	350	0.77	50	0.30	2300	1.930,89	PR
PR - (PAULO JOSÉ ESCHER - 2465736S02)	1,500	0.492	82	350	0.77	50	0.30	1500	1.259,28	PR
PR - (DARI HECK - 2471418S02)	219	0.460	198	365	0.77	198	0.46	219	179,26	PR
PR - (EGON ALOISIO SULZBACHER - 2471833S02)	1,000	0.492	82	350	0.77	50	0.30	1000	839,52	PR
PR - (EDIMAR E ERNALDO BOMBARDELLI - 2472023S02)	1,500	0.460	198	365	0.77	198	0.46	1500	1.227,83	PR
PR - (GERMANO ADEMAR HUNEMEIER - 2472546S02)	149	0.460	198	365	0.77	198	0.46	149	121,96	PR
PR - (HÉLIO SCHWENGBER - 2472732S02)	1,080	0.492	82	350	0.77	50	0.30	1080	906,68	PR
PR - (WILSON BLOCH - 2476371S02)	1,000	0.492	82	350	0.77	50	0.30	1000	839,52	PR
PR - (REMIO JOSÉ WEYH - 2476754S02)	1,500	0.492	82	350	0.77	50	0.30	1500	1.259,28	PR
PR - (RAINALDO SEIBOLD - 2477980S02)	1,600	0.492	82	350	0.77	50	0.30	1600	1.343,23	PR
PR - (FLÁVIO VIVAN - 2478021S02)	1,130	0.492	82	350	0.77	50	0.30	1130	948,66	PR
PR - (LINDOLFO MAUWERK - 2480220S02)	1,000	0.492	82	350	0.77	50	0.30	1000	839,52	PR
PR - (PAULO EMÍLIO RUPOLO - 2482029S02)	274	0.460	198	365	0.77	198	0.46	274	224,28	PR
PR - (GILBERTO WOLMANN - 2483335S02)	1,000	0.492	82	350	0.77	50	0.30	1000	839,52	PR
PR - (ALDINO JACOB HECK - 2483726S02)	600	0.492	82	350	0.77	50	0.30	600	503,71	PR
PR - (GUIDO MANICA - 2484552S02)	380	0.460	198	365	0.77	198	0.46	380	311,05	PR
PR - (WILIBALDO LORSCHTEITER - 2487659S02)	500	0.492	82	350	0.77	50	0.30	500	419,76	PR
PR - (JOÃO LIRA - 2487683S01)	1,000	0.492	82	350	0.77	50	0.30	1000	839,52	PR
PR - (NELSON LUIZ FACIN - 2489325S02)	1,000	0.492	82	350	0.77	50	0.30	1000	839,52	PR
PR - (ARMINDO SANCHES - 2714388S01)	600	0.492	82	350	0.77	50	0.30	600	503,71	PR
PR - (JOÃO VALDECIR PLETSCH - 2856832S02)	1,500	0.492	82	350	0.77	50	0.30	1500	1.259,28	PR
PR - (ERICA ROCHENBACH BAMBERG - 2872811S02)	1,200	0.492	82	350	0.77	50	0.30	1200	1.007,42	PR
PR - (MANOEL JOECI FLORES - 2944049S02)	2,100	0.492	82	350	0.77	50	0.30	2100	1.762,99	PR
PR - (NADIA MARISA P B ANTONIAZZI - 2985160S01)	400	0.460	198	365	0.77	198	0.46	400	327,42	PR

# SMALL-SCALE CDM PROGRAMME OF ACTIVITIES MONITORING REPORT

## CDM – Executive Board

page 22

PR - (PAULO CÉSAR DALPASQUALE - 3024466S01)	250	0.460	198	365	0.77	198	0.46	250	204,64	PR
PR - (AMAURO FERRANDIN - 3108147S02)	1,500	0.492	82	350	0.77	50	0.30	1500	1.259,28	PR
PR - (JOÃO FEIX - 3108163S02)	1,500	0.492	82	350	0.77	50	0.30	1500	1.259,28	PR
PR - (LÍDIO MICHELS - 3214478S02)	300	0.460	198	365	0.77	198	0.46	300	245,57	PR
PR - (MOACIR JOSÉ BAMBERG - 3247368S02)	1,000	0.492	82	350	0.77	50	0.30	1000	839,52	PR
PR - (VALDAIR MITRUT - 3279120S01)	260	0.460	198	365	0.77	198	0.46	260	212,82	PR
PR - (ROQUE DAGA - 3335348S02)	1,000	0.492	82	350	0.77	50	0.30	1000	839,52	PR
PR - (VALDIR JOSÉ HORN REICHERT - 3364461S02)	1,000	0.492	82	350	0.77	50	0.30	1000	839,52	PR
PR - (ARTUR VOGT - 3380319S02)	240	0.460	198	365	0.77	198	0.46	240	196,45	PR
PR - (JOSÉ BURATTO - 3402380S02)	2,000	0.492	82	350	0.77	50	0.30	2000	1.679,04	PR
PR - (BELAMIR KONZEN - 563633S04)	300	0.460	198	365	0.77	198	0.46	300	245,57	PR
PR - (CELSO JOSE LONGO - 576298S02)	300	0.460	198	365	0.77	198	0.46	300	245,57	PR
PR - (JACIR JOSE DARIVA II - 8102317S01)	1,000	0.460	198	365	0.77	198	0.46	1000	818,56	PR
PR - (DAVID KOWALSKI - 8102333S02)	150	0.460	198	365	0.77	198	0.46	150	122,78	PR
PR - (IDIOMAR ANTONIO MARIANI - 8102414S02)	280	0.460	198	365	0.77	198	0.46	280	229,2	PR
PR - (RUDINEI BELLÉ - 8104328S02)	500	0.460	198	365	0.77	198	0.46	500	409,28	PR
PR - (ALFREDO MOMBACH - 8105090S02)	200	0.460	198	365	0.77	198	0.46	200	163,71	PR
PR - (PEDRO DA LUZ - 8105120S02)	200	0.460	198	365	0.77	198	0.46	200	163,71	PR
PR - (EDUARDO KOWALSKI - 8105200S02)	300	0.460	198	365	0.77	198	0.46	300	245,57	PR
PR - (GILSON CARLOS VINAGA - 8106444S01)	600	0.460	198	365	0.77	198	0.46	600	491,13	PR
PR - (ELZA SANTINA COGO - 8121869S01)	200	0.460	198	365	0.77	198	0.46	200	163,71	PR
PR - (MARINA MARIA KLIEMANN - 8125163S01)	1,500	0.492	82	350	0.77	50	0.30	1500	1.259,28	PR
PR - (ADEMIR GEREMIAS - 8126550S01)	1,500	0.460	198	365	0.77	198	0.46	1500	1.227,83	PR
PR - (RAUL ARNOLDO JARABIZA - 8135207S01)	2,000	0.492	82	350	0.77	50	0.30	2000	1.679,04	PR
PR - (RITA CARMEN KARKOW MEINERZ - 8145083S01)	500	0.460	198	365	0.77	198	0.46	500	409,28	PR
PR - (ENZO ROBERTO GRANDO - 8163642S01)	200	0.460	198	365	0.77	198	0.46	200	163,71	PR
PR - (CAMILO ALOISIO NIEDERMEYER - 8198497S01)	965	0.492	82	350	0.77	50	0.30	965	810,14	PR
PR - (ALBINO SCHULZ - 8200157S01)	1,000	0.492	82	350	0.77	50	0.30	1000	839,52	PR
PR - (GILMAR ANTÔNIO GUSSO - 8205370S01)	200	0.460	198	365	0.77	198	0.46	200	163,71	PR
PR - (IRINEU FREY - 8211329S01)	1,500	0.492	82	350	0.77	50	0.30	1500	1.259,28	PR
PR - (VENDOLIN SCHLENDLER - 8214948S01)	1,500	0.492	82	350	0.77	50	0.30	1500	1.259,28	PR
PR - (GENÉSIO MANOEL DE BORBA - 8215154S01)	1,200	0.492	82	350	0.77	50	0.30	1200	1.007,42	PR
PR - (ALDOIR CHITOLINA - 8217327S01)	850	0.492	82	350	0.77	50	0.30	850	713,59	PR

# SMALL-SCALE CDM PROGRAMME OF ACTIVITIES MONITORING REPORT

## CDM – Executive Board

page 23

PR - (NELSON BORDIGNON - 8218161S01)	1,500	0.492	82	350	0.77	50	0.30	1500	1.259,28	PR
PR - (GLADECIR JOSE MARMENTINI - 8220905S01)	710	0.460	198	365	0.77	198	0.46	710	581,17	PR
PR - (VALDIR HELMUTH GRAUNKE - 8223653S01)	500	0.492	82	350	0.77	50	0.30	500	419,76	PR
PR - (NELCI WEISSHEIMER KRAUSER - 8223661S01)	200	0.460	198	365	0.77	198	0.46	200	163,71	PR
PR - (REGINALDO MAXIMINO DECKER - 8230730S01)	1,000	0.492	82	350	0.77	50	0.30	1000	839,52	PR
PR - (WANTUIL PARADELLA - 8232245S01)	500	0.492	82	350	0.77	50	0.30	500	419,76	PR
PR - (BRUNO ETVINO SHWINGEL - 8247161S01)	1,000	0.492	82	350	0.77	50	0.30	1000	839,52	PR
PR - (KUNO PEDRO ALBINO POERSCH - 8255997S01)	900	0.492	82	350	0.77	50	0.30	900	755,57	PR
PR - (GERALDO TRENKEL - 8257329S01)	1,000	0.492	82	350	0.77	50	0.30	1000	839,52	PR
PR - (LUCIANO ANDRE HERTZ - 8258147S01)	1,000	0.492	82	350	0.77	50	0.30	1000	839,52	PR
PR - (JAIR GUIBBERT - 8269998S01)	1,000	0.492	82	350	0.77	50	0.30	1000	839,52	PR
PR - (DAVID DALAGNHOL - 8322341S01)	550	0.492	82	350	0.77	50	0.30	550	461,74	PR
PR - (ADEMIR ROMEU CLEVSTON - 8329052S01)	1,000	0.492	82	350	0.77	50	0.30	1000	839,52	PR
PR - (CLAIDI BRIETZKE - 8377235S01)	1,130	0.492	82	350	0.77	50	0.30	1130	948,66	PR
PR - (LIZETE MARIA LUNKES - 8379742S01)	1,100	0.492	82	350	0.77	50	0.30	1100	923,47	PR
PR - (PEDRO HENRIQUE WALCKER - 8381496S01)	1,000	0.492	82	350	0.77	50	0.30	1000	839,52	PR
PR - (ALCEU INÁCIO HAMMES - 8391491S01)	1,100	0.492	82	350	0.77	50	0.30	1100	923,47	PR
PR - (GILBERTO CASTANHO - 8399387S01)	1,200	0.492	82	350	0.77	50	0.30	1200	1007,42	PR
PR - (LUIS SILVESTRE NEUBERGUER - 8405468S01)	1,000	0.492	82	350	0.77	50	0.30	1000	839,52	PR
PR - (EGON BLUM - 8408483S01)	1,000	0.492	82	350	0.77	50	0.30	1000	839,52	PR
PR - (ANEUCEMAR BRESSAN - 8410798S01)	500	0.460	198	365	0.77	198	0.46	500	409,28	PR
PR - (NILTON LAURO SCHMITT - 8413452S01)	500	0.492	82	350	0.77	50	0.30	500	419,76	PR
PR - (APARECIDO DONIZETTI ZOTESSO - 8420297S01)	1,500	0.492	82	350	0.77	50	0.30	1500	1.259,28	PR
PR - (ENIO ARNO WINTER - 8424039S01)	1,500	0.492	82	350	0.77	50	0.30	1500	1.259,28	PR
PR - (SADI MORGENSTERN - 8426325S01)	300	0.460	198	365	0.77	198	0.46	300	245,57	PR
PR - (VALDIR EISEN - 8429553S01)	1,000	0.492	82	350	0.77	50	0.30	1000	839,52	PR
PR - (JAIME DONASSOLO - 8429561S01)	500	0.492	82	350	0.77	50	0.30	500	419,76	PR
PR - (LUIS PAULO KRESSIN - 8526567S01)	600	0.492	82	350	0.77	50	0.30	600	503,71	PR
PR - (BRUNO KLIEMANN - 8431035S01)	500	0.492	82	350	0.77	50	0.30	500	419,76	PR
PR - (WLADIMIR PROCKSCH - 8432422S01)	1,400	0.492	82	350	0.77	50	0.30	1400	1.175,33	PR
PR - (RUBENS APARECIDO S - 8433399S01)	500	0.492	82	350	0.77	50	0.30	500	419,76	PR
PR - (RENEO DARCI FENNER - 8434980S01)	800	0.492	82	350	0.77	50	0.30	800	671,62	PR
PR - (CLÁUDIO JOÃO MALDANER - 8435758S01)	800	0.492	82	350	0.77	50	0.30	800	671,62	PR

# SMALL-SCALE CDM PROGRAMME OF ACTIVITIES MONITORING REPORT

## CDM – Executive Board

page 24

PR - (ANTENOR ANGELO BURATTO - 8436045S01)	1,500	0.492	82	350	0.77	50	0.30	1500	1259,28	PR
PR - (IVO CAVALLI JÚNIOR - 8436460S01)	200	0.460	198	365	0.77	198	0.46	200	163,71	PR
PR - (DORIVAL MOREIRA - 8437246S01)	1,000	0.492	82	350	0.77	50	0.30	1000	839,52	PR
PR - (NELSON KEHL - 8437270S01)	600	0.492	82	350	0.77	50	0.30	600	503,71	PR
PR - (PAULO JOSE SCHNEIDER - 8437319S01)	1,500	0.492	82	350	0.77	50	0.30	1500	1.259,28	PR
PR - (ARNALDO STOCKER - 8437360S01)	600	0.492	82	350	0.77	50	0.30	600	503,71	PR
PR - (FIORELO DOMINGOS ROMANO - 8439192S01)	650	0.492	82	350	0.77	50	0.30	650	545,69	PR
PR - (AILTON EDSON JOPE - 8444447S01)	1,200	0.492	82	350	0.77	50	0.30	1200	1.007,42	PR
PR - (DORIVALDO LUIZ DOHN - 8445672S01)	2,000	0.492	82	350	0.77	50	0.30	2000	1.679,04	PR
PR - (ARNO PEDRO EBERHARDT - 8452130S01)	600	0.492	82	350	0.77	50	0.30	600	503,71	PR
PR - (SEBALDO INÁCIO KOTZ - 8456399S01)	1,000	0.492	82	350	0.77	50	0.30	1000	839,52	PR
PR - (ADOLFO KUHN - 8459738S01)	1,000	0.492	82	350	0.77	50	0.30	1000	839,52	PR
PR - (MARIA EMA FERRARI IJIMA - 8460426S01)	1,000	0.492	82	350	0.77	50	0.30	1000	839,52	PR
PR - (MARINES LIBRELATO MARTINELLI - 8464197S01)	1,000	0.492	82	350	0.77	50	0.30	1000	839,52	PR
PR - (ELIO RUPOLO - 8464227S01)	1,500	0.492	82	350	0.77	50	0.30	1500	1.259,28	PR
PR - (WALDEMAR KOVALESKI - 8464723S01)	500	0.492	82	350	0.77	50	0.30	500	419,76	PR
PR - (ERNANI ANTONIO LERNER - 8464847S01)	290	0.460	198	365	0.77	198	0.46	290	237,38	PR
PR - (AFONSO BRENTANO - 8471932S01)	500	0.492	82	350	0.77	50	0.30	500	419,76	PR
PR - (IVETE GARCIA DE ANDRADE - 8472467S01)	1,200	0.492	82	350	0.77	50	0.30	1200	1.007,42	PR
PR - (JAIR FREEZE - IVO FREEZE - 8473099S01)	1,000	0.492	82	350	0.77	50	0.30	1000	839,52	PR
PR - (ORLEI PALUDO E VENTELINO PALUDO - 8473986S01)	200	0.460	198	365	0.77	198	0.46	200	163,71	PR
PR - (NERY BRESSAN - 8474320S01)	600	0.492	82	350	0.77	50	0.30	600	503,71	PR
PR - (CARLOS EGON JAHN - 8475202S01)	500	0.492	82	350	0.77	50	0.30	500	419,76	PR
PR - (JOÃO GOZZI - 8475229S01)	600	0.492	82	350	0.77	50	0.30	600	503,71	PR
PR - (ILDOR HASPER - 8481237S01)	560	0.492	82	350	0.77	50	0.30	560	470,13	PR
PR - (ARI SCHOFFEN - 8481261S01)	1,000	0.492	82	350	0.77	50	0.30	1000	839,52	PR
PR - (ACADIO POERSCH - 8421048S01)	1,200	0.492	82	350	0.77	50	0.30	1200	1.007,42	PR
PR - (ADELAR EGGERS - 8471177S01)	1,500	0.492	82	350	0.77	50	0.30	1500	1.259,28	PR
PR - (ADELAR JOSÉ KLEIN - 8408513S01)	2,500	0.492	82	350	0.77	50	0.30	2500	2.098,80	PR
PR - (ADEMAR BLOCH - 8431540S01)	1,500	0.492	82	350	0.77	50	0.30	1500	1.259,28	PR
PR - (ADEMIR DI DOMENICO - 8372365S01)	1,300	0.492	82	350	0.77	50	0.30	1300	1.091,37	PR
PR - (ADEMIR MATHEUS MACARI - 3058212S02)	500	0.460	198	365	0.77	198	0.46	500	409,28	PR
PR - (ADILSON D. KULPA - 8440450S01)	400	0.460	198	365	0.77	198	0.46	400	327,42	PR

# SMALL-SCALE CDM PROGRAMME OF ACTIVITIES MONITORING REPORT

## CDM – Executive Board

page 25

PR - (ADOLAR FREITAG - 8404267S01)	1,000	0.492	82	350	0.77	50	0.30	1000	839,52	PR
PR - (AGOSTINHO BELLÉ - 8429839S01)	500	0.492	82	350	0.77	50	0.30	500	419,76	PR
PR - (ALAOR BRESSAN - 8125295S01)	500	0.460	198	365	0.77	198	0.46	500	409,28	PR
PR - (ALBINO BUSS - 2458942S02)	1,200	0.492	82	350	0.77	50	0.30	1200	1.007,42	PR
PR - (ALDAIR JOSÉ BOUFLEUER - 8454841S01)	1,500	0.492	82	350	0.77	50	0.30	1500	1.259,28	PR
PR - (ALEXANDRE LIMBERGER - 8212279S01)	1,500	0.492	82	350	0.77	50	0.30	1500	1.259,28	PR
PR - (ALVENIR COCINSKI - 8447128S01)	3,800	0.492	82	350	0.77	50	0.30	3800	3.190,17	PR
PR - (AMÉRICO ZANON - 2438429S03)	800	0.492	82	350	0.77	50	0.30	800	671,62	PR
PR - (ANDRÉ CARLOS SCHMIDT - 8210098S01)	500	0.492	82	350	0.77	50	0.30	500	419,76	PR
PR - (ANTONINHO LUCHETTA - 8190623S01)	350	0.460	198	365	0.77	198	0.46	350	286,49	PR
PR - (ANTONIO DE CÉSARO CAVALER - 1803921S02)	120	0.460	198	365	0.77	198	0.46	120	98,23	PR
PR - (ANTONIO SLONGO - 2455820S02)	1,500	0.492	82	350	0.77	50	0.30	1500	1.259,28	PR
PR - (ANTÔNIO SPIASSI - 810226S02)	150	0.460	198	365	0.77	198	0.46	150	122,78	PR
PR - (ARI ZIMMERMANN - 8428174S01)	500	0.492	82	350	0.77	50	0.30	500	419,76	PR
PR - (ARNO TRENKEL - 8257280S01)	1,200	0.492	82	350	0.77	50	0.30	1200	1.007,42	PR
PR - (ARY PEDRO LONGO - 8104271S02)	300	0.460	198	365	0.77	198	0.46	300	245,57	PR
PR - (BRUNA ZUCCHI DARIVA - 8431760S01)	650	0.460	198	365	0.77	198	0.46	650	532,06	PR
PR - (CASEMIRO CHIAMENTI - 2471019S02)	500	0.492	82	350	0.77	50	0.30	500	419,76	PR
PR - (CASSILDO HENDGES - 1799312S02)	145	0.460	198	365	0.77	198	0.46	145	118,69	PR
PR - (CELITO ANTONINHO PERETTO - 2730073S02)	500	0.460	198	365	0.77	198	0.46	500	409,28	PR
PR - (CELSO JOSE ESCHER - 3096793S02)	800	0.492	82	350	0.77	50	0.30	800	671,62	PR
PR - (CLARINDO RUBERT - 8165513S01)	1,000	0.492	82	350	0.77	50	0.30	1000	839,52	PR
PR - (CLÁUDIO GERSON SCHULZ - 8465274S01)	600	0.492	82	350	0.77	50	0.30	600	503,71	PR
PR - (CLÓVIS CATTO - 8118345S01)	250	0.460	198	365	0.77	198	0.46	250	204,64	PR
PR - (DANILO ANGELI - 2441179S01)	1,000	0.492	82	350	0.77	50	0.30	1000	839,52	PR
PR - (DANILO REUTER - 2464799S02)	2,000	0.492	82	350	0.77	50	0.30	2000	1.679,04	PR
PR - (DARCY SADY HEYDT (contrato e licença em nome da filho Adilson) - 8465371S01)	1,500	0.492	82	350	0.77	50	0.30	1500	1.259,28	PR
PR - (DARIO DONAT - 2875918S01)	1,000	0.492	82	350	0.77	50	0.30	1000	839,52	PR
PR - (DARLEI JOSE BAU - 8208948S01)	250	0.460	198	365	0.77	198	0.46	250	204,64	PR
PR - (DELICIO ROSSETTO - 8213038S01)	1,300	0.492	82	350	0.77	50	0.30	1300	1.091,37	PR
PR - (DELMAR BRICCIUS - 2458969S02)	1,000	0.492	82	350	0.77	50	0.30	1000	839,52	PR
PR - (DÉLSIO JOÃO LONGO - 8105308S02)	150	0.460	198	365	0.77	198	0.46	150	122,78	PR
PR - (DONAR HOFFMANN - 2479290S02)	600	0.492	82	350	0.77	50	0.30	600	503,71	PR

# SMALL-SCALE CDM PROGRAMME OF ACTIVITIES MONITORING REPORT

## CDM – Executive Board

page 26

PR - (EDILMO BERNARDO SCHMIDT - 8039798S01)	500	0.492	82	350	0.77	50	0.30	500	419,76	PR
PR - (EDSON SPIASSI - 3195821S01)	200	0.460	198	365	0.77	198	0.46	200	163,71	PR
PR - (EDVINO KNORST - 8190470S01)	1,000	0.492	82	350	0.77	50	0.30	1000	839,52	PR
PR - (EGON ARNO WANDER - 8207089S01)	750	0.492	82	350	0.77	50	0.30	750	629,64	PR
PR - (ERIBALDO REIDEL - 8234680S01)	1,000	0.492	82	350	0.77	50	0.30	1000	839,52	PR
PR - (EUCLIDES LEVANDOSKI - 3203743S02)	1,000	0.492	82	350	0.77	50	0.30	1000	839,52	PR
PR - (FELICIANO SCHULZ - 8437335S01)	500	0.492	82	350	0.77	50	0.30	500	419,76	PR
PR - (FIDÉLIO TESSARI - 2452910S01)	1,000	0.492	82	350	0.77	50	0.30	1000	839,52	PR
PR - (FLORENTINO DEMIN - 8105235S01)	1,000	0.460	198	365	0.77	198	0.46	1000	818,56	PR
PR - (FRANCISCO HANSEN DONEL - 2460050S02)	500	0.492	82	350	0.77	50	0.30	500	419,76	PR
PR - (GENUINO TROIAN - 153010S02)	200	0.460	198	365	0.77	198	0.46	200	163,71	PR
PR - (GERSON EDUIR KLEIN - 8290334S01)	700	0.492	82	350	0.77	50	0.30	700	587,66	PR
PR - (GERVÁSIO FEIDEN - 8436398S01)	500	0.492	82	350	0.77	50	0.30	500	419,76	PR
PR - (GILBERTO JOÃO ROSSI - 8200408S01)	500	0.460	198	365	0.77	198	0.46	500	409,28	PR
PR - (GILMAR DI DOMENICO - 8174059S01)	1,200	0.492	82	350	0.77	50	0.30	1200	1.007,42	PR
PR - (GILMAR MUSSOI - 8121842S01)	1,500	0.492	82	350	0.77	50	0.30	1500	1.259,28	PR
PR - (GUNNIBERT TIDERKE - 8452636S01)	1,000	0.492	82	350	0.77	50	0.30	1000	839,52	PR
PR - (HÉLIO DUSMANN - 2482924S02)	400	0.460	198	365	0.77	198	0.46	400	327,42	PR
PR - (HERCILIO SCHMIDT - 8433984S01)	1,200	0.492	82	350	0.77	50	0.30	1200	1.007,42	PR
PR - (ILDEFONSO JOSÉ BERNARDINI - 3001725S01)	600	0.492	82	350	0.77	50	0.30	600	503,71	PR
PR - (ILDO REUTER - 2449897S02)	500	0.492	82	350	0.77	50	0.30	500	419,76	PR
PR - (ILZI MARIA SIMON - 8356718S01)	350	0.492	82	350	0.77	50	0.30	350	293,83	PR
PR - (INOCENTE ANSOLIN - 2473062S02)	1,000	0.492	82	350	0.77	50	0.30	1000	839,52	PR
PR - (NAIR HAUBER FELIPE - 8493901S01)	600	0.492	82	350	0.77	50	0.30	600	503,71	PR
PR - (IRINEU FENSTERSEIFER - 8429952S01)	500	0.492	82	350	0.77	50	0.30	500	419,76	PR
PR - (CRISTIANE CLAUDIA MEINERZ - 8507210S01)	500	0.460	198	365	0.77	198	0.46	500	409,28	PR
PR - (IVO KLEIN - 8139199S01)	500	0.492	82	350	0.77	50	0.30	500	419,76	PR
PR - (IVO ANTONIO BELUSSO MOTERLE - 8104956S02)	200	0.460	198	365	0.77	198	0.46	200	163,71	PR
PR - (JACO ANIZIO SCHMIDT - 3320464S02)	1,200	0.492	82	350	0.77	50	0.30	1200	1.007,42	PR
PR - (JACOB LUIS TARTARI - 83716444S01)	2,000	0.492	82	350	0.77	50	0.30	2000	1.679,04	PR
PR - (JAIME LUIZ ELERT - 8463514S01)	1,000	0.492	82	350	0.77	50	0.30	1000	839,52	PR
PR - (JAIR POERSCH - 8171599S01)	1,000	0.492	82	350	0.77	50	0.30	1000	839,52	PR
PR - (JAIR SOAVE - 2465906S01)	700	0.492	82	350	0.77	50	0.30	700	587,66	PR

# SMALL-SCALE CDM PROGRAMME OF ACTIVITIES MONITORING REPORT

## CDM – Executive Board

page 27

PR - (JOÃO CARLOS DULABA - 8461600S01)	1,000	0.492	82	350	0.77	50	0.30	1000	839,52	PR
PR - (JOSÉ BERNARDI - 3320138S02)	150	0.460	198	365	0.77	198	0.46	150	122,78	PR
PR - (JOSÉ CARLOS HARTMANN - 2463555S02)	700	0.492	82	350	0.77	50	0.30	700	587,66	PR
PR - (JOSÉ FRITZEN E INÊS GUIBERT - 8438153S01)	600	0.492	82	350	0.77	50	0.30	600	503,71	PR
PR - (JOSE IMMIG - 8456631S01)	500	0.492	82	350	0.77	50	0.30	500	419,76	PR
PR - (JOSÉ ROQUE OTT - 8102252S02)	300	0.460	198	365	0.77	198	0.46	300	245,57	PR
PR - (JURACI BUGS - 8436355S01)	500	0.492	82	350	0.77	50	0.30	500	419,76	PR
PR - (LAUDACIR ACLETO ZAMINHAM - 8481148S01)	1,500	0.492	82	350	0.77	50	0.30	1500	1.259,28	PR
PR - (LAUDIR ANTÔNIO KLIEMAN - 2438500S02)	900	0.492	82	350	0.77	50	0.30	900	755,57	PR
PR - (LEOPOLDO ERVINO KULPA - 2474085S02)	800	0.460	198	365	0.77	198	0.46	800	654,84	PR
PR - (LIRIO LUIZ MARSARO - 2798727S02)	1,000	0.492	82	350	0.77	50	0.30	1000	839,52	PR
PR - (LUCIO BRUNO STEIN - 2440865S02)	700	0.492	82	350	0.77	50	0.30	700	587,66	PR
PR - (LUCIO CANÍSIO STEFFENS - 2439514S02)	1,000	0.492	82	350	0.77	50	0.30	1000	839,52	PR
PR - (LUCIO PEDRO GIBBERT - 2449714S02)	1,000	0.492	82	350	0.77	50	0.30	1000	839,52	PR
PR - (LUIS WERLER WELTER - 8473439S01)	270	0.460	198	365	0.77	198	0.46	270	221,01	PR
PR - (LUIZ ANTONIO BURTET - 3370119S02)	2,000	0.492	82	350	0.77	50	0.30	2000	1.679,04	PR
PR - (LUIZ BIESEK - 8490805S01)	500	0.492	82	350	0.77	50	0.30	500	419,76	PR
PR - (LUIZ CRISTOFERI - 2438798S02)	1,500	0.492	82	350	0.77	50	0.30	1500	1.259,28	PR
PR - (LUIZ FACIM - 2478722S02)	800	0.492	82	350	0.77	50	0.30	800	671,62	PR
PR - (MARCELO AUGUSTO HECK - 2723735S02)	1,500	0.492	82	350	0.77	50	0.30	1500	1.259,28	PR
PR - (MÁRCIA MARIA KEGLER - 8428867S01)	500	0.492	82	350	0.77	50	0.30	500	419,76	PR
PR - (MARCOS PELIZZARO - 2465450S02)	500	0.460	198	365	0.77	198	0.46	500	409,28	PR
PR - (MARIA REUTER - 2499460S02)	460	0.492	82	350	0.77	50	0.30	460	386,18	PR
PR - (MARLENE L. KLEINSCHMITT MULLER - 8198254S01)	500	0.492	82	350	0.77	50	0.30	500	419,76	PR
PR - (MAURIO DIRCEU BUSS - 8245126S01)	600	0.492	82	350	0.77	50	0.30	600	503,71	PR
PR - (MAURO LUIS TEHRHOST - 8261342S01)	1,000	0.492	82	350	0.77	50	0.30	1000	839,52	PR
PR - (MILTON KLEIN - 2781409S02)	800	0.492	82	350	0.77	50	0.30	800	671,62	PR
PR - (AIRTON ISIDOR MAYER - 8234787S01)	600	0.492	82	350	0.77	50	0.30	600	503,71	PR
PR - (NELVO EVALDO ABICH - 8468320S01)	600	0.492	82	350	0.77	50	0.30	600	503,71	PR
PR - (NERCI KELM - 8460469S01)	600	0.492	82	350	0.77	50	0.30	600	503,71	PR
PR - (MÁRIO JACOB SCHONS - 8537020S01)	580	0.492	82	350	0.77	50	0.30	580	486,92	PR
PR - (NICLÉCIA BERNARDINI CUCOLOTO - 8468702S01)	650	0.492	82	350	0.77	50	0.30	650	545,69	PR
PR - (OLDEMAR MEINERZ - 2474816S01)	1,000	0.492	82	350	0.77	50	0.30	1000	839,52	PR

# SMALL-SCALE CDM PROGRAMME OF ACTIVITIES MONITORING REPORT

## CDM – Executive Board

page 28

PR - (OLIRIO ISER - 8104131S02)	130	0.460	198	365	0.77	198	0.46	130	106,41	PR
PR - (OLIVIO BERNART - 2440911S02)	2,000	0.492	82	350	0.77	50	0.30	2000	1.679,04	PR
PR - (ORILDO SLONGO - 2478935S02)	2,300	0.492	82	350	0.77	50	0.30	2300	1.930,89	PR
PR - (OSVALDO BENO HECK - 2458098S02)	600	0.492	82	350	0.77	50	0.30	600	503,71	PR
PR - (PAULO CARLOS WIEDMANN - 8436002S01)	600	0.492	82	350	0.77	50	0.30	600	503,71	PR
PR - (PAULO LASCHOMBEK - 8429480S01)	500	0.492	82	350	0.77	50	0.30	500	419,76	PR
PR - (PAULO RICARDO LUNKES - 2730014S02)	600	0.492	82	350	0.77	50	0.30	600	503,71	PR
PR - (PAULO ROBERTO KREUTZ - 3406822S02)	1,000	0.492	82	350	0.77	50	0.30	1000	839,52	PR
PR - (PEDRO MARASCHIN - 2458519S02)	800	0.460	198	365	0.77	198	0.46	800	654,84	PR
PR - (ROBSON FERRACINI - 8371156S01)	1,000	0.492	82	350	0.77	50	0.30	1000	839,52	PR
PR - (ROMEU TEM PASS - 2479729S01)	1,500	0.492	82	350	0.77	50	0.30	1500	1.259,28	PR
PR - (RUDI BLOCH - 2449056S02)	1,500	0.492	82	350	0.77	50	0.30	1500	1.259,28	PR
PR - (SEBASTIÃO PELLENS - 2488736S02)	650	0.492	82	350	0.77	50	0.30	650	545,69	PR
PR - (SELDO HUGO SCHAFER - 3315711S01)	500	0.492	82	350	0.77	50	0.30	500	419,76	PR
PR - (SERGIO ANTONIO GRZEGOZEWSKI - 8426244S01)	1,500	0.492	82	350	0.77	50	0.30	1500	1.259,28	PR
PR - (SERGIO LUIS LIESENFELD - 8435766S01)	500	0.492	82	350	0.77	50	0.30	500	419,76	PR
PR - (SILMAR REZZADORI - 2843269S02)	500	0.460	198	365	0.77	198	0.46	500	409,28	PR
PR - (SILVESTRE ALOISIO HENCKEMEIER - 2458780S02)	750	0.492	82	350	0.77	50	0.30	750	629,64	PR
PR - (TEREZINHA MARIA PIES BARCAROL - 2464233S02)	1,500	0.492	82	350	0.77	50	0.30	1500	1.259,28	PR
PR - (VALDEMAR MARANGON - 8104824S02)	145	0.460	198	365	0.77	198	0.46	145	118,69	PR
PR - (WALDEMIRO RESMINI E ADIR RESMINI - 2439700S02)	500	0.492	82	350	0.77	50	0.30	500	419,76	PR
PR - (VALDI TRENKEL - 2475936S02)	500	0.492	82	350	0.77	50	0.30	500	419,76	PR
PR - (VALDIR BEHLING - 8431426S01)	1,000	0.492	82	350	0.77	50	0.30	1000	839,52	PR
PR - (VALDIR FERRARI - 2487667S02)	1,000	0.492	82	350	0.77	50	0.30	1000	839,52	PR
PR - (VALDIR FRACARO - 8433518S01)	650	0.492	82	350	0.77	50	0.30	650	545,69	PR
PR - (VALDIR JOSÉ KLEIN - 2459604S02)	1,000	0.492	82	350	0.77	50	0.30	1000	839,52	PR
PR - (VALDIR LUIZ SILBERT - 2448033S02)	1,000	0.492	82	350	0.77	50	0.30	1000	839,52	PR
PR - (VALDOMIRO PIES - 2460416S02)	1,500	0.492	82	350	0.77	50	0.30	1500	1.259,28	PR
PR - (VALERIO VANZELLA - 8261334S01)	1,000	0.492	82	350	0.77	50	0.30	1000	839,52	PR
PR - (VALMOR BERTÉ - 3415210S02)	1,500	0.492	82	350	0.77	50	0.30	1500	1.259,28	PR
PR - (VALMOR SLONGO - 2477858S02)	3,500	0.492	82	350	0.77	50	0.30	3500	2.938,32	PR
PR - (VALTER DIEMER - 8434956S01)	996	0.492	82	350	0.77	50	0.30	996	836,16	PR
PR - (VALTER LAUERMANN - 8455210S01)	1,100	0.492	82	350	0.77	50	0.30	1100	923,47	PR

# SMALL-SCALE CDM PROGRAMME OF ACTIVITIES MONITORING REPORT

## CDM – Executive Board

page 29

PR - (VALTER NICOLAU BLATZ - 8261423S01)	520	0.492	82	350	0.77	50	0.30	520	436,55	PR
PR - (VERNER TEHLEN - 2487080S02)	1,000	0.492	82	350	0.77	50	0.30	1000	839,52	PR
PR - (WALDIR OLDONI - 2459825S01)	600	0.492	82	350	0.77	50	0.30	600	503,71	PR
PR - (WALTER JOÃO SCHWARZ - 8459835S01)	1,000	0.492	82	350	0.77	50	0.30	1000	839,52	PR
PR - (WERNO SILVANO KOEHLER - 3406849S02)	1,000	0.492	82	350	0.77	50	0.30	1000	839,52	PR
PR - (WILSON TOEBE - 2449129S02)	1,000	0.492	82	350	0.77	50	0.30	1000	839,52	PR
PR - (GRANJA SÃO SEBASTIAO-3 - Sadia SS3)	600	0.460	198	365	0.77	198	0.46	600	491,13	PR
PR - (GRANJA SÃO SEBASTIAO-4 - Sadia SS4)	600	0.460	198	365	0.77	198	0.46	600	491,13	PR
PR - (GRANJA SÃO SEBASTIAO-6 - Sadia SS8)	600	0.460	198	365	0.77	198	0.46	600	491,13	PR
PR - (GRANJA LUZ MARINA-7 - Sadia LM7)	600	0.460	198	365	0.77	198	0.46	600	491,13	PR
PR - (GRANJA SÃO LUIZ-9 - Sadia SL9)	3,000	0.492	82	350	0.77	50	0.30	3000	2.518,56	PR
PR - (GRANJA SÃO LUIZ-10 - Sadia SL10)	3,000	0.492	82	350	0.77	50	0.30	3000	2.518,56	PR
PR - (GRANJA RIO DO OURO-11 - Sadia RO11)	1,500	0.492	82	350	0.77	50	0.30	1500	1.259,28	PR
PR - (MARIO SCHONS - 8455910S01)	600	0.492	82	350	0.77	50	0.30	600	503,71	PR

Title of CPA	Nm	Vs site	W site	Dy	MCF	W default	Vs default	Nm	BE BE= $VS_{site} * Nm * Bo(0.45) * DCH4(0.67) * MCF * GWP_{CH4(21)} * Dy / 1000$	State
RS - (ADELAR PIAIA - 2093154S03)	500	0.460	198	365	0.77	198	0.46	500	409,28	RS
RS - (ADEMIR ALBIERI SCHIRMANN - 8224072S01)	1,000	0.492	82	350	0.77	50	0.30	1000	839,52	RS
RS - (CARLOS ALBERTO BANDEIRA - 2784173S02)	1,600	0.492	82	350	0.77	50	0.30	1600	1.343,23	RS
RS - (EDGAR SCHINDLER - 8447632S01)	1,000	0.492	82	350	0.77	50	0.30	1000	839,52	RS
RS - (ELESTOR RUPPENTHAL - 2418690S02)	960	0.492	82	350	0.77	50	0.30	960	805,94	RS
RS - (ELIAS MOTA DA SILVA - 8267898S01)	1,000	0.492	82	350	0.77	50	0.30	1000	839,52	RS
RS - (ELÓI ROQUE SIMON - 8460620S01)	1,500	0.492	82	350	0.77	50	0.30	1500	1.259,28	RS
RS - (ERTON HAAS - 2979403S01)	1,000	0.492	82	350	0.77	50	0.30	1000	839,52	RS
RS - (EUGÊNIO REIMANN - 8470430S01)	1,000	0.492	82	350	0.77	50	0.30	1000	839,52	RS

# SMALL-SCALE CDM PROGRAMME OF ACTIVITIES MONITORING REPORT

## CDM – Executive Board

page 30

RS - (EUSÉBIO JOSÉ SCHNEIDER - 3306860S02)	1,800	0.492	82	350	0.77	50	0.30	1800	1.511,13	RS
RS - (FLORAMILTO OTTONELI - 3107574S01)	1,500	0.492	82	350	0.77	50	0.30	1500	1.259,28	RS
RS - (JOÃO ND - 8211230S01)	600	0.460	198	365	0.77	198	0.46	600	491,13	RS
RS - (JOÃO N. SCHNEIDERS - 2985802S02)	600	0.460	198	365	0.77	198	0.46	600	491,13	RS
RS - (JOSÉ ADEMAR SIMON - 8455562S01)	1,000	0.492	82	350	0.77	50	0.30	1000	839,52	RS
RS - (LUIZ ELOY - 3378004S02)	915	0.492	82	350	0.77	50	0.30	915	768,16	RS
RS - (MARCOS JUNG - 8152144S01)	1,100	0.492	82	350	0.77	50	0.30	1100	923,47	RS
RS - (MAURI PAULO MAÇALAI - 8215235S01)	1,500	0.492	82	350	0.77	50	0.30	1500	1.259,28	RS
RS - (NELI BARICHELLO - 3159400S02)	410	0.460	198	365	0.77	198	0.46	410	335,61	RS
RS - (NELSON LOMPA - 2817381S02)	980	0.492	82	350	0.77	50	0.30	980	822,73	RS
RS - (NOELI VASUM ENGERS - 8386986S01)	500	0.460	198	365	0.77	198	0.46	500	409,28	RS
RS - (PAULO TENGATEN - 8436304S01)	1,200	0.492	82	350	0.77	50	0.30	1200	1.007,42	RS
RS - (PEDRONILDO GARCIA - 2898730S02)	1,000	0.492	82	350	0.77	50	0.30	1000	839,52	RS
RS - (VALDETE HELDT KONARZEWSKI - 8145180S01)	1,800	0.492	82	350	0.77	50	0.30	1800	1.511,13	RS
RS - (ADEMAR HENSEL - 2431807S02)	900	0.492	82	350	0.77	50	0.30	900	755,57	RS
RS - (ADEMAR J. PRIMAZ - 8150311S02)	1,100	0.460	198	365	0.77	198	0.46	1100	900,41	RS
RS - (ADROALDO BERNARDI - 8149666S01)	800	0.492	82	350	0.77	50	0.30	800	671,62	RS
RS - (ALBERTO JANDREY - 2702703S02)	600	0.492	82	350	0.77	50	0.30	600	503,71	RS
RS - (AMANDIO MEIER - 8108811S01)	550	0.492	82	350	0.77	50	0.30	550	461,74	RS
RS - (ANDRE KRESTSMAM - 8492832S01)	650	0.492	82	350	0.77	50	0.30	650	545,69	RS
RS - (ANDRE ROTILI - 8489351S01)	700	0.460	198	365	0.77	198	0.46	700	572,99	RS
RS - (ANTONIO LUDWIG - 8101710S01)	760	0.492	82	350	0.77	50	0.30	760	638,03	RS
RS - (ARI FRELING - 2351315S02)	270	0.460	198	365	0.77	198	0.46	270	221,01	RS
RS - (ARI HENTEGS - 2844281S02)	600	0.492	82	350	0.77	50	0.30	600	503,71	RS
RS - (CLAÚDIO LUIZ ROEVER JR - 8525048S01)	1,000	0.492	82	350	0.77	50	0.30	1000	839,52	RS
RS - (BENTO JOSÉ PUHL - 2427958S02)	700	0.460	198	365	0.77	198	0.46	700	572,99	RS
RS - (CESAR AUGUSTO OST - 2149982S02)	500	0.460	198	365	0.77	198	0.46	500	409,28	RS
RS - (CLAIR PIAIA - 2353636S02)	540	0.460	198	365	0.77	198	0.46	540	442,02	RS
RS - (DALTRO M. LORENZOW - 2428148S02)	300	0.460	198	365	0.77	198	0.46	300	245,57	RS
RS - (DANILO TURRA - 8474001S01)	500	0.492	82	350	0.77	50	0.30	500	419,76	RS
RS - (DARCI KETTERMANN - 3375854S02)	600	0.492	82	350	0.77	50	0.30	600	503,71	RS
RS - (DELCIR PEYROT - 8271879S01)	800	0.492	82	350	0.77	50	0.30	800	671,62	RS
RS - (DIRCEU THOMASIO - 8448558S01)	600	0.492	82	350	0.77	50	0.30	600	503,71	RS

# SMALL-SCALE CDM PROGRAMME OF ACTIVITIES MONITORING REPORT

## CDM – Executive Board

page 31

RS - (EDENE DOMINGOS CANSIAN - 2867931S02)	900	0.492	82	350	0.77	50	0.30	900	755,57	RS
RS - (EDSON BREUNIG - 8435944S01)	600	0.492	82	350	0.77	50	0.30	600	503,71	RS
RS - (EDSON JAIR KRIESEL - 8414092S01)	840	0.492	82	350	0.77	50	0.30	840	705,2	RS
RS - (ELEMAR JANDREY - 3250954S01)	575	0.492	82	350	0.77	50	0.30	575	482,72	RS
RS - (ELIO P. ALBARELLO - 2418614S02)	300	0.460	198	365	0.77	198	0.46	300	245,57	RS
RS - (ENIO BONEMANN - 2425890S02)	600	0.492	82	350	0.77	50	0.30	600	503,71	RS
RS - (ERNO R. GUNTHER - 2353490S01)	360	0.460	198	365	0.77	198	0.46	360	294,68	RS
RS - (ERWINO G. SEIFERT - 8435235S01)	500	0.492	82	350	0.77	50	0.30	500	419,76	RS
RS - (EUGÊNIO KOLHS - 2751526S02)	740	0.492	82	350	0.77	50	0.30	740	621,24	RS
RS - (FABRÍCIO EBERHARDT - 8214891S01)	600	0.492	82	350	0.77	50	0.30	600	503,71	RS
RS - (FRANCISCO DEOCLIDES TUZZIN - 8211779S01)	500	0.492	82	350	0.77	50	0.30	500	419,76	RS
RS - (GELSON PELEGRINNI - 8447659S01)	650	0.492	82	350	0.77	50	0.30	650	545,69	RS
RS - (GILMAR EDICEU PATZ - 8313687S01)	740	0.492	82	350	0.77	50	0.30	740	621,24	RS
RS - (GUIDO WEIRICH - 8219966S01)	500	0.492	82	350	0.77	50	0.30	500	419,76	RS
RS - (HELIO SCHUSTER - 8378800S01)	1,000	0.492	82	350	0.77	50	0.30	1000	839,52	RS
RS - (HILÁRIO STEINER - 2334550S02)	800	0.492	82	350	0.77	50	0.30	800	671,62	RS
RS - (ISIDORO GUDER - 8247692S01)	500	0.492	82	350	0.77	50	0.30	500	419,76	RS
RS - (IVO ROHENKOHL - 2342235S02)	600	0.492	82	350	0.77	50	0.30	600	503,71	RS
RS - (JAIR SCHMITT - 8455694S01)	820	0.492	82	350	0.77	50	0.30	820	688,41	RS
RS - (JANDIR GISCH - 2969564S02)	500	0.492	82	350	0.77	50	0.30	500	419,76	RS
RS - (JORGE ALEXANDRE BURG - 8222770S01)	500	0.492	82	350	0.77	50	0.30	500	419,76	RS
RS - (JOSÉ A. GOERHARDT - 2424487S02)	1,300	0.460	198	365	0.77	198	0.46	1300	1.064,12	RS
RS - (FABIO SIMON - 8531250S01)	935	0.492	82	350	0.77	50	0.30	935	784,95	RS
RS - (JOSÉ DOS SANTOS - 8475245S01)	840	0.492	82	350	0.77	50	0.30	840	705,2	RS
RS - (JOSE PAULINO SPILLARI - 8214255S01)	1,000	0.460	198	365	0.77	198	0.46	1000	818,56	RS
RS - (JUCINEI PROVIN - 3382133S02)	600	0.492	82	350	0.77	50	0.30	600	503,71	RS
RS - (LEANDRO ANDRÉ DA SILVA - 3220095S02)	820	0.492	82	350	0.77	50	0.30	820	688,41	RS
RS - (LIDIA DATSCH - 8106800S01)	540	0.492	82	350	0.77	50	0.30	540	453,34	RS
RS - (LOTARIO HAACK - 8214115S01)	560	0.492	82	350	0.77	50	0.30	560	470,13	RS
RS - (LUCIANO GAZOLLA - 2433036S02)	410	0.492	82	350	0.77	50	0.30	410	344,2	RS
RS - (LUIZ BASSO - 8454779S01)	800	0.492	82	350	0.77	50	0.30	800	671,62	RS
RS - (LUIZ BONATO - 8450960S01)	500	0.492	82	350	0.77	50	0.30	500	419,76	RS
RS - (LUIZ CARLOS GERHARDT - 2968169S02)	500	0.460	198	365	0.77	198	0.46	500	409,28	RS

# SMALL-SCALE CDM PROGRAMME OF ACTIVITIES MONITORING REPORT

## CDM – Executive Board

page 32

RS - (MARA LETICIA GRASSI - 8412804S01)	720	0.492	82	350	0.77	50	0.30	720	604,45	RS
RS - (MARCIO BOLZAN - 8434883S01)	45	0.492	82	350	0.77	50	0.30	45	37,78	RS
RS - (MAURI GIARETTA - 8379874S01)	750	0.492	82	350	0.77	50	0.30	750	629,64	RS
RS - (MILTON KIPPER - 2929368S02)	700	0.492	82	350	0.77	50	0.30	700	587,66	RS
RS - (NELSON GOELZER - 8470880S01)	660	0.492	82	350	0.77	50	0.30	660	554,08	RS
RS - (NELSON KONIG - 2432188S02)	220	0.460	198	365	0.77	198	0.46	220	180,08	RS
RS - (NELSON VALDEMAR PICH - 2900076S02)	1,170	0.492	82	350	0.77	50	0.30	1170	982,24	RS
RS - (NORBERTO DELLBRUCKER - 3328805S02)	700	0.492	82	350	0.77	50	0.30	700	587,66	RS
RS - (ODILON M. DOS SANTOS - 8471096S01)	530	0.492	82	350	0.77	50	0.30	530	444,95	RS
RS - (PAULO ANTONIO SCHWADE - 2418126S02)	250	0.460	198	365	0.77	198	0.46	250	204,64	RS
RS - (PAULO J. ZANETTI - 3344118S02)	660	0.492	82	350	0.77	50	0.30	660	554,08	RS
RS - (PEDRO DOS SANTOS BRIZOLA - 2432390S02)	900	0.492	82	350	0.77	50	0.30	900	755,57	RS
RS - (PEDRO SCHNEIDER - 8221022S01)	800	0.492	82	350	0.77	50	0.30	800	671,62	RS
RS - (PEDRO STEIN - 8378380S01)	600	0.492	82	350	0.77	50	0.30	600	503,71	RS
RS - (REMIR ADEMIR RAUCH - 3109780S02)	410	0.492	82	350	0.77	50	0.30	410	344,2	RS
RS - (MARIA RITA MARTINS - 8520240S01)	500	0.492	82	350	0.77	50	0.30	500	419,76	RS
RS - (ROQUE LINK - 8433585S01)	300	0.492	82	350	0.77	50	0.30	300	251,86	RS
RS - (SANDRO PIZETTA - 8101531S01)	480	0.492	82	350	0.77	50	0.30	480	402,97	RS
RS - (MIRIAN MARION - 8529698S01)	520	0.492	82	350	0.77	50	0.30	520	436,55	RS
RS - (SEVERINO MENEGAT - 2432579S02)	300	0.460	198	365	0.77	198	0.46	300	245,57	RS
RS - (SINESIO JORGE KIST - 2424592S02)	1,550	0.460	198	365	0.77	198	0.46	1550	1.268,76	RS
RS - (TEREZINHA TREVISAN - 2416387S02)	600	0.460	198	365	0.77	198	0.46	600	491,13	RS
RS - (VALDECIR CUNHA ANTUNES - 8204853S01)	680	0.492	82	350	0.77	50	0.30	680	570,87	RS
RS - (VALMOR JOHAN - 3384489S02)	300	0.492	82	350	0.77	50	0.30	300	251,86	RS
RS - (VANDERLEI BUSSLER - 8148198S01)	650	0.492	82	350	0.77	50	0.30	650	545,69	RS
RS - (VANILDO GULIANI - 2429268S02)	300	0.460	198	365	0.77	198	0.46	300	245,57	RS
RS - (VERA LUCIA KAUFMANN - 8412812S01)	200	0.460	198	365	0.77	198	0.46	200	163,71	RS
RS - (VICENTE KRETZ - 8489017S01)	500	0.492	82	350	0.77	50	0.30	500	419,76	RS
RS - (VILMAR ANTONIO ADORYAN - 8156174S01)	540	0.492	82	350	0.77	50	0.30	540	453,34	RS
RS - (VILSON NEGRINI - 2665557S02)	530	0.492	82	350	0.77	50	0.30	530	444,95	RS
RS - (WALMOR NICOLAU DELLA FLORA - 8215731S01)	500	0.492	82	350	0.77	50	0.30	500	419,76	RS
RS - (WALTER DEMANN - 2689898S02)	580	0.492	82	350	0.77	50	0.30	580	486,92	RS
RS - (WILLIAN CARLOS COSTA - 8459592S01)	1,000	0.492	82	350	0.77	50	0.30	1000	839,52	RS

# SMALL-SCALE CDM PROGRAMME OF ACTIVITIES MONITORING REPORT

CDM – Executive Board

page 33

Title of CPA	Nm	Vs site	W site	Dy	MCF	W default	Vs default	Nm	BE BE= $VS_{site} \cdot Nm \cdot Bo(0.45) \cdot DCH4(0.67) \cdot MCF \cdot GWP_{CH4(21)} \cdot Dy / 1000$	State
MG - (ADALBERTO ANDRADE CAMARGOS - 8467676S01)	4,000	0.492	82	350	0.78	50	0.30	4000	3.401,69	MG
MG - (ADEMAR MARIO FERREIRA - 8515581S01)	3,300	0.492	82	350	0.78	50	0.30	3300	2.806,39	MG
MG - (ADRIANO R. FERNANDES - 8348626S01)	4,400	0.492	82	350	0.78	50	0.30	4400	3.741,86	MG
MG - (ANAFETAL ALVES DA SILVA - 8424292S01)	2,263	0.492	82	350	0.78	50	0.30	2263	1.924,50	MG
MG - (ARMANDO REZENDE PEREIRA - 8242526S01)	8,507	0.492	82	350	0.78	50	0.30	8507	7.234,54	MG
MG - (CELIO MAR BELCHIOR - 8470618S01)	2,000	0.492	82	350	0.78	50	0.30	2000	1.700,84	MG
MG - (CLÁUDIA DAS GRAÇAS BORGES - 8381607S01)	1,600	0.492	82	350	0.78	50	0.30	1600	1.360,67	MG
MG - (DELANO ROOSEVELT BITTENCOURT - 8430780S01)	2,116	0.492	82	350	0.78	50	0.30	2116	1.799,49	MG
MG - (DEMÉTRIO DE ANDRADE COELHO - 8429006S01)	3,983	0.492	82	350	0.78	50	0.30	3983	3.387,23	MG
MG - (EDSON SHUNJI KOTANI - 8177252S01)	2,093	0.492	82	350	0.78	50	0.30	2093	1.779,93	MG
MG - (ELSON FERREIRA DA CUNHA - 8177651S02)	1,600	0.492	82	350	0.78	50	0.30	1600	1.360,67	MG
MG - (EURI PAULO DOS SANTOS - 8273480S01)	3,415	0.492	82	350	0.78	50	0.30	3415	2.904,19	MG
MG - (GENÉSIO ALVES DE RESENDE - 8262527S01)	4,060	0.492	82	350	0.78	50	0.30	4060	3.452,71	MG
MG - (HELI APARECIDO - 8521310S01)	2,460	0.492	82	350	0.78	50	0.30	2460	2.092,04	MG
MG - (HELOÍSA CRISTINA DE CARVALHO CUNHA - 8422958S01)	651	0.492	82	350	0.78	50	0.30	651	553,62	MG
MG - (ILDOMAR JOSÉ FRANCO - 8424250S01)	2,306	0.492	82	350	0.78	50	0.30	2306	1.961,07	MG
MG - (JAMILA LUZIA GUIMARÃES SILVA - 8380830S01)	2,385	0.492	82	350	0.78	50	0.30	2385	2.028,26	MG
MG - (JOAQUINA MACHADO DA CUNHA - 8464910S01)	1,151	0.492	82	350	0.78	50	0.30	1151	978,84	MG
MG - (JORGE ELIAS - 8525242S01)	1,500	0.492	82	350	0.78	50	0.30	1500	1.275,63	MG
MG - (JORGE AZEVEDO FRANÇA - 8451192S01)	2,000	0.460	198	365	0.78	198	0.46	2000	1.658,37	MG
MG - (JOSÉ ADEIR PEREIRA BARBOSA - 8178097S01)	1,129	0.492	82	350	0.78	50	0.30	1129	960,13	MG
MG - (JOSÉ GOMES LOPES - 8436282S01)	1,500	0.492	82	350	0.78	50	0.30	1500	1.275,63	MG
MG - (JOSÉ RENATO DE ÁVILA - 8515743S01)	2,500	0.492	82	350	0.78	50	0.30	2500	2.126,05	MG
MG - (JOSÉ ROBERTO GUIMARÃES - 8497265S01)	1,100	0.492	82	350	0.78	50	0.30	1100	935,46	MG

# SMALL-SCALE CDM PROGRAMME OF ACTIVITIES MONITORING REPORT

## CDM – Executive Board

page 34

MG - (JOSÉ SILVESTRE NUNES - 8470626S01)	6,000	0.492	82	350	0.78	50	0.30	6000	5.102,53	MG
MG - (LONGUINHO DE PAULA MIRANDA - 8424063S01)	1,240	0.492	82	350	0.78	50	0.30	1240	1.054,52	MG
MG - (LUCAS ALVES MACHADO - 8433526S01)	3,997	0.492	82	350	0.78	50	0.30	3997	3.399,14	MG
MG - (LUCE MARY RODRIGUES FERREIRA - 8260451S01)	3,330	0.492	82	350	0.78	50	0.30	3330	2.831,90	MG
MG - (LUIS ALBERTO FERREIRA I E II - 8179182S01)	2,600	0.492	82	350	0.78	50	0.30	2600	2.211,10	MG
MG - (LUIZ F. SANTOS ALVIN - 8516022S01)	3,300	0.492	82	350	0.78	50	0.30	3300	2.806,39	MG
MG - (LUIZ ANTONIO M. VASCONCELOS - 8434824S01)	2,200	0.460	198	365	0.78	198	0.46	2200	1.824,21	MG
MG - (MARCOS DIAS DOS REIS - 8432929S01)	1,972	0.492	82	350	0.78	50	0.30	1972	1.677,03	MG
MG - (MESSIAS FELIX DE OLIVEIRA - 8430756S01)	8,000	0.492	82	350	0.78	50	0.30	8000	6.803,37	MG
MG - (MORUM JOSÉ LOPES BERNARDINO - 8354642S01)	23,000	0.460	198	365	0.78	198	0.46	23000	29.985,03	MG
MG - (OCIMAR JOSÉ FERNANDES - 8289280S01)	2,177	0.492	82	350	0.78	50	0.30	2177	1.851,37	MG
MG - (OSVALDO ALVES DE RESENDE I E II - 8501190S01)	2,600	0.492	82	350	0.78	50	0.30	2600	2.211,10	MG
MG - (PAULO REGIS SILVA - 8424276S01)	4,700	0.492	82	350	0.78	50	0.30	4700	3.996,98	MG
MG - (EDUARDO V PEREIRA PEDRO C. GUIMARÃES - 8440905S01)	2,000	0.460	198	365	0.78	198	0.46	2000	1.658,37	MG
MG - (PEDRO SANCHES OQUENDO - 8465800S01)	4,000	0.492	82	350	0.78	50	0.30	4000	3.401,69	MG
MG - (REJANE PEREIRA GUIMARÃES ACHCAR I - 8216967S01)	2,770	0.492	82	350	0.78	50	0.30	2770	2.355,67	MG
MG - (RODRIGO NAVES MUNDIM - 8178267S01)	2,000	0.492	82	350	0.78	50	0.30	2000	1.700,84	MG
MG - (ROMES GOUVEA BASTOS - 8424268S01)	4,500	0.492	82	350	0.78	50	0.30	4500	3826,9	MG
MG - (SAMUEL CASTRO - 8177783S01)	3,520	0.492	82	350	0.78	50	0.30	3520	2.993,48	MG
MG - (SEBASTIÃO GOMES LOPES - 8436274S01)	1,500	0.492	82	350	0.78	50	0.30	1500	1.275,63	MG
MG - (SILVIA FERNANDES - 8467358S01)	1,650	0.492	82	350	0.78	50	0.30	1650	1.403,20	MG
MG - (SILVIO DE OLIVEIRA FRANCO - 8177430S01)	1,280	0.492	82	350	0.78	50	0.30	1280	1.088,54	MG
MG - (THOMAZ F.R. JUNIOR - 8407983S01)	12,050	0.492	82	350	0.78	50	0.30	12050	10.247,58	MG
MG - (UBIRATAN TEIXEIRA DE CARVALHO - 8276951S01)	3,600	0.492	82	350	0.78	50	0.30	3600	3061,52	MG
MG - (DELANO E BITTENCOURT FREITAS - 8430780S01)	2,200	0.492	82	350	0.78	50	0.30	2200	1870,93	MG
MG - (VALDIR LUIZ FERREIRA - 8419779S01)	5,149	0.460	198	365	0.78	198	0.46	5149	4.269,48	MG
MG - (WALDEMIRO DA LUZ FRANCO - 8424233S01)	1,166	0.492	82	350	0.78	50	0.30	1166	991,59	MG
MG - (WANDERLE F. PEREIRA - 8473404S01)	12,707	0.492	82	350	0.78	50	0.30	12707	10.806,31	MG
MG - (ZAIRO DIVINO MACEDO - 8177228S01)	2,500	0.492	82	350	0.78	50	0.30	2500	2.126,05	MG
MG - (THOMAZ F.R. JUNIOR - 8407983S02)	3,000	0.492	82	350	0.78	50	0.30	3000	2.551,27	MG
MG - (MULTIPLICADORA 1 (GRANJA F - SÍTIO 2) - 2925257S08)	2,050	0.492	82	350	0.78	50	0.30	2050	1743,36	MG
MG - (MULTIPLICADORA 2 (GRANJA C - SÍTIO 2) - 2925257S04)	4,571	0.492	82	350	0.78	50	0.30	4571	3887,28	MG
MG - (MULTIPLICADORA 5 (GRANJA B) - 2925257S01)	1,750	0.460	198	365	0.78	198	0.46	1750	1.451,08	MG

# SMALL-SCALE CDM PROGRAMME OF ACTIVITIES MONITORING REPORT

## CDM – Executive Board

page 35

MG - (MULTIPLICADORA 6 (GRANJA E) - 2925257S011)	1,899	0.492	82	350	0.78	50	0.30	1899	1.614,95	MG
MG - (JOSÉ AUGUSTO VILELA COELHO - 8352275S01)	3,606	0.492	82	350	0.78	50	0.30	3606	3.066,62	MG
MG - (RONALDO DE FREITAS SILVA - 8177996S01)	4,000	0.492	82	350	0.78	50	0.30	4000	3.401,69	MG

Title of CPA	Nm	Vs site	W site	Dy	MCF	W default	Vs default	Nm	BE BE= $VS_{site} \cdot Nm \cdot Bo(0.45) \cdot DCH4(0.67) \cdot MCF \cdot GWP_{CH4(21)} \cdot Dy / 1000$	State
MT - (ALMERI DALMASO - 8201811S01)	8,800	0.492	82	350	0.78	50	0.30	8800	7.483,71	MT
MT - (ARNALDO JOSÉ BORTOLLINI - 8367078S01)	4,600	0.460	198	365	0.78	198	0.46	4600	3.814,26	MT
MT - (DELIR NADIN I E II - 8402299S01)	8,800	0.492	82	350	0.78	50	0.30	8800	7.483,71	MT
MT - (EDUARDO JOSÉ PIVETTA I E II - 8498989S01)	8,800	0.492	82	350	0.78	50	0.30	8800	7.483,71	MT
MT - (ELEDIR PEDRO TECHIO - 8449554S02)	4,400	0.492	82	350	0.78	50	0.30	4400	3.741,86	MT
MT - (FAUSTO SCHOLL I A V - 8506019S01)	22,000	0.492	82	350	0.78	50	0.30	22000	18.709,28	MT
MT - (GEMA CAPELETTI I A X - 8516618S01)	44,000	0.492	82	350	0.78	50	0.30	44000	37.418,56	MT
MT - (IRALDO EBERTZ - 8501475S01)	4,400	0.460	198	365	0.78	198	0.46	4400	3.648,42	MT
MT - (IRALDO EBERTZ E JORGE L. P. MUNARI - 8501475S01)	400	0.492	82	350	0.78	50	0.30	400	340,17	MT
MT - (HILÁRIO PICCINI I E II - 8180628S01)	8,800	0.492	82	350	0.78	50	0.30	8800	7.483,71	MT
MT - (ITACIR ZANDONAI I E II - 8537631S01)	8,800	0.492	82	350	0.78	50	0.30	8800	7.483,71	MT
MT - (JORGE LUIZ PORTO MUNARI - 8178704S01)	4,400	0.460	198	365	0.78	198	0.46	4400	3.648,42	MT
MT - (JOSÉ SIDNEY CASAVECCHIA I A VI - 8502455S01)	17,600	0.492	82	350	0.78	50	0.30	17600	14.967,42	MT
MT - (LINO JOSÉ AMBIEL I A VI - 2190834S01)	17,600	0.492	82	350	0.78	50	0.30	17600	14.967,42	MT
MT - (MARINO JOSÉ FRANZ I - 3089460G01)	9,200	0.460	198	365	0.78	198	0.46	9200	7.628,51	MT
MT - (MILTON BAVARESCO - 8535337S01)	4,400	0.492	82	350	0.78	50	0.30	4400	3.741,86	MT
MT - (MOACIR RUI LUPATINI I E II - 8510032S01)	8,800	0.492	82	350	0.78	50	0.30	8800	7.483,71	MT
MT - (PAULO SÉRGIO FRANZ I A X - 3354024S01)	44,000	0.492	82	350	0.78	50	0.30	44000	37.418,56	MT
MT - (PEDRO MARASCHIN I E II - 8193070S01)	8,800	0.492	82	350	0.78	50	0.30	8800	7.483,71	MT
MT - (PEDRO MARCOS SPANHOL I E II - 8500991S01)	8,800	0.492	82	350	0.78	50	0.30	8800	7.483,71	MT
MT - (RAFAEL SIMON I E II - 8525064S01)	8,800	0.492	82	350	0.78	50	0.30	8800	7.483,71	MT

## SMALL-SCALE CDM PROGRAMME OF ACTIVITIES MONITORING REPORT

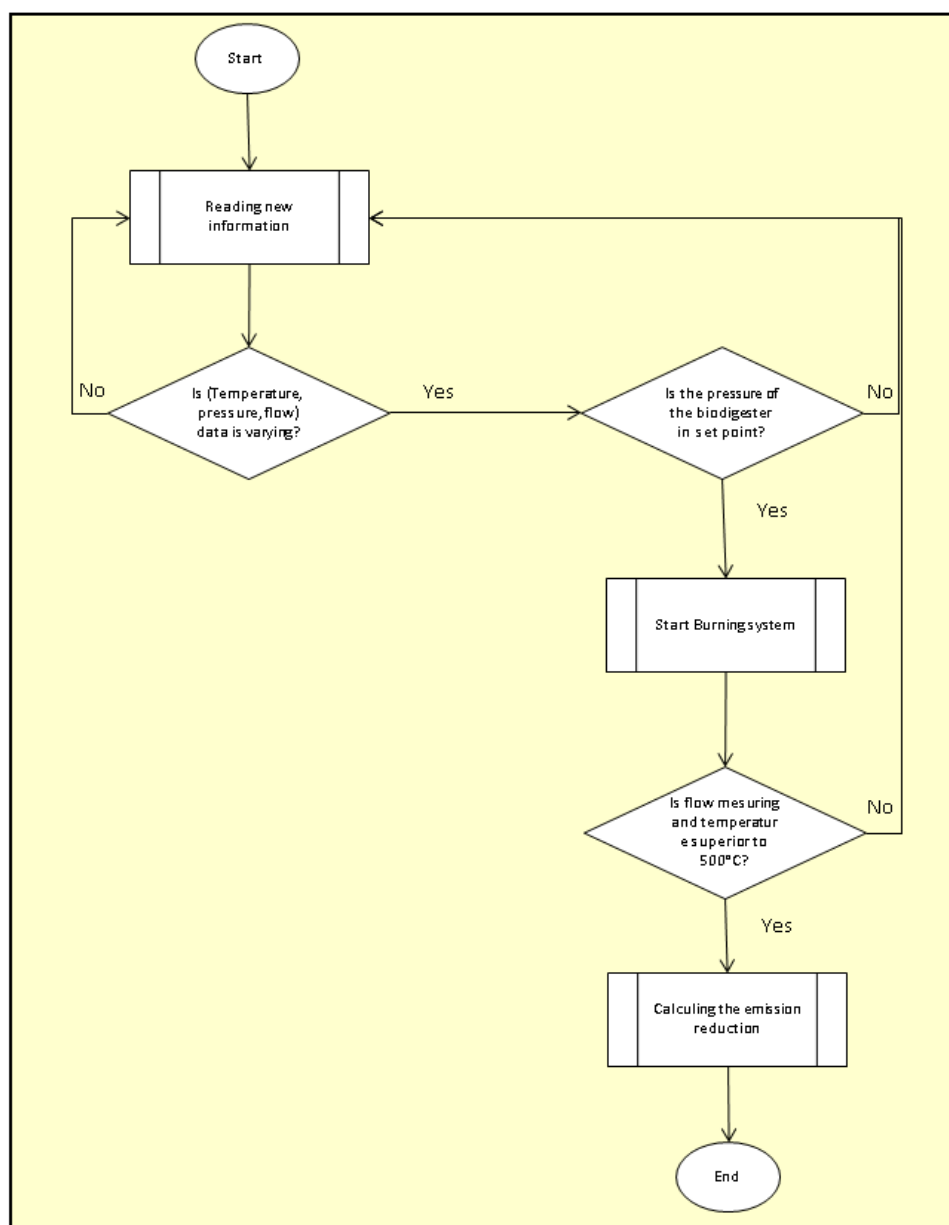
### CDM – Executive Board

page 36

MT - (ROMUALDO MOREIRA I E II - 8534187S01)	8,800	0.492	82	350	0.78	50	0.30	8800	7.483,71	MT
MT - (ROBSON ANGELO NADIN - 8518777S01)	4,400	0.492	82	350	0.78	50	0.30	4400	3.741,86	MT
MT - (VALDEMIR NADIN I E II - 8402302S01)	8,800	0.492	82	350	0.78	50	0.30	8800	7.483,71	MT
MT - (MULTIPLICADORA 1 - Sadia Mp1)	6,600	0.492	82	350	0.78	50	0.30	6600	6.732,18	MT
MT - (MULTIPLICADORA 2 - Sadia Mp2)	6,100	0.492	82	350	0.78	50	0.30	6100	6.099,67	MT

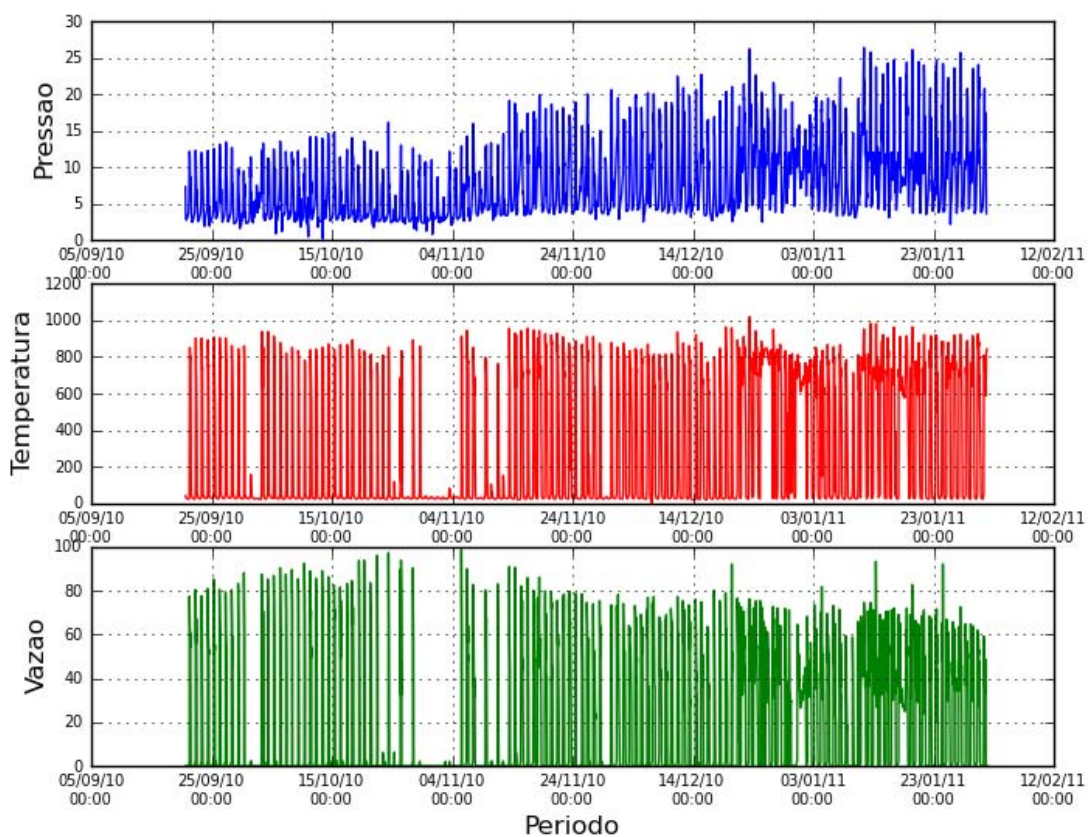
## Annex II

The logic of the computer programming for the accounting of the emission reduction is inserted inside the Computer Logic Program (CLP) and is demonstrated in the flowchart below. If the temperature does not acquire 500°C the accounting does not start.



The figure below indicates the graphs for pressure, temperature and flow of the biogas. For all farmers there is one CLP and the monitoring of these three parameters are determined continuously. For each farmer the control is done automatically and is accomplished in each CLP. The monitoring of continuous parameters are informed by the outsourced company HI Tecnologia.

The figure below represents a farmer within the monitoring period for this monitoring report that is from August 21<sup>st</sup> of 2010 to January 31<sup>st</sup> of 2011.



# SMALL-SCALE CDM PROGRAMME OF ACTIVITIES MONITORING REPORT

CDM – Executive Board

page 39

Project emissions and emissions reductions for the monitoring period of the PoA.

	PoA Emission Reduction				
	Concórdia	Lucas do Rio Verde	Toledo	Três Passos	Uberlândia
MDflare (ton CO2 eq)	7008,1	11944	18296,2	3761,87	8758,47
MDfuel (ton CO2 eq)	0	7863,9	414,74	0	2082,81
Destroyed Methane - MD (ton CO2 eq)	<b>7008,1</b>	<b>19807,9</b>	<b>18710,94</b>	<b>3761,87</b>	<b>10841,28</b>
PEflare (ton CO2 eq)	778,68	1327,12	2032,92	417,99	973,16
PEelh (ton CO2 eq)	1,62	1,38	4,26	0,94	1,01
PETotal (ton CO2 eq)	780,3	1328,49	2037,18	418,92	974,18
ER (ton CO2 eq)	<b>6227,85</b>	<b>18479,45</b>	<b>16673,8</b>	<b>3342,96</b>	<b>9867,09</b>
Biogas measured and burnt - BG(m³)	948298	2661240	2424677,9	509769	1459135
Burning time(h)	45386,8	38803,8	119757,28	26321,5	28508,54
Total biogas measured (m³)	1190430	2873320	2791867,9	629669	1956765
Total burning time (h)	73690,2	43072,9	148379,28	39321,7	40230,44